



Full wwPDB X-ray Structure Validation Report ⓘ

Aug 22, 2020 – 07:07 PM BST

PDB ID : 5CXV
Title : Structure of the human M1 muscarinic acetylcholine receptor bound to antagonist Tiotropium
Authors : Sun, B.; Feng, D.; Li, X.; Kobilka, T.S.; Kobilka, B.K.
Deposited on : 2015-07-29
Resolution : 2.70 Å(reported)

This is a Full wwPDB X-ray Structure Validation Report for a publicly released PDB entry.

We welcome your comments at validation@mail.wwpdb.org

A user guide is available at

<https://www.wwpdb.org/validation/2017/XrayValidationReportHelp>

with specific help available everywhere you see the ⓘ symbol.

The following versions of software and data (see [references ⓘ](#)) were used in the production of this report:

MolProbity : 4.02b-467
Mogul : 1.8.5 (274361), CSD as541be (2020)
Xtriage (Phenix) : 1.13
EDS : 2.13.1
buster-report : 1.1.7 (2018)
Percentile statistics : 20191225.v01 (using entries in the PDB archive December 25th 2019)
Refmac : 5.8.0158
CCP4 : 7.0.044 (Gargrove)
Ideal geometry (proteins) : Engh & Huber (2001)
Ideal geometry (DNA, RNA) : Parkinson et al. (1996)
Validation Pipeline (wwPDB-VP) : 2.13.1

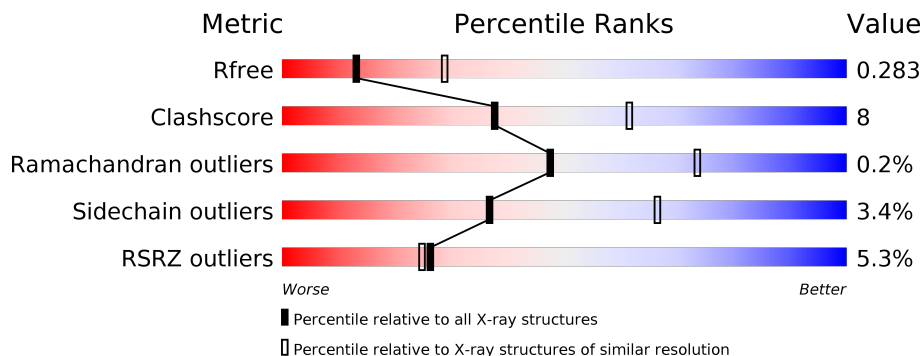
1 Overall quality at a glance

The following experimental techniques were used to determine the structure:

X-RAY DIFFRACTION

The reported resolution of this entry is 2.70 Å.

Percentile scores (ranging between 0-100) for global validation metrics of the entry are shown in the following graphic. The table shows the number of entries on which the scores are based.



Metric	Whole archive (#Entries)	Similar resolution (#Entries, resolution range(Å))
R_{free}	130704	2808 (2.70-2.70)
Clashscore	141614	3122 (2.70-2.70)
Ramachandran outliers	138981	3069 (2.70-2.70)
Sidechain outliers	138945	3069 (2.70-2.70)
RSRZ outliers	127900	2737 (2.70-2.70)

The table below summarises the geometric issues observed across the polymeric chains and their fit to the electron density. The red, orange, yellow and green segments on the lower bar indicate the fraction of residues that contain outliers for ≥ 3 , 2, 1 and 0 types of geometric quality criteria respectively. A grey segment represents the fraction of residues that are not modelled. The numeric value for each fraction is indicated below the corresponding segment, with a dot representing fractions $\leq 5\%$. The upper red bar (where present) indicates the fraction of residues that have poor fit to the electron density. The numeric value is given above the bar.

Mol	Chain	Length	Quality of chain
1	A	515	 5% (red), 69% (green), 17% (yellow), 14% (grey)
2	C	7	 43% (green), 43% (yellow), 14% (orange)

2 Entry composition [i](#)

There are 8 unique types of molecules in this entry. The entry contains 3599 atoms, of which 0 are hydrogens and 0 are deuteriums.

In the tables below, the ZeroOcc column contains the number of atoms modelled with zero occupancy, the AltConf column contains the number of residues with at least one atom in alternate conformation and the Trace column contains the number of residues modelled with at most 2 atoms.

- Molecule 1 is a protein called Muscarinic acetylcholine receptor M1,Endolysin,Muscarinic acetylcholine receptor M1.

Mol	Chain	Residues	Atoms					ZeroOcc	AltConf	Trace
			Total	C	N	O	S			
1	A	444	3439	2248	572	597	22	0	0	0

There are 39 discrepancies between the modelled and reference sequences:

Chain	Residue	Modelled	Actual	Comment	Reference
A	-24	MET	-	initiating methionine	UNP P11229
A	-23	LYS	-	expression tag	UNP P11229
A	-22	THR	-	expression tag	UNP P11229
A	-21	ILE	-	expression tag	UNP P11229
A	-20	ILE	-	expression tag	UNP P11229
A	-19	ALA	-	expression tag	UNP P11229
A	-18	LEU	-	expression tag	UNP P11229
A	-17	SER	-	expression tag	UNP P11229
A	-16	TYR	-	expression tag	UNP P11229
A	-15	ILE	-	expression tag	UNP P11229
A	-14	PHE	-	expression tag	UNP P11229
A	-13	CYS	-	expression tag	UNP P11229
A	-12	LEU	-	expression tag	UNP P11229
A	-11	VAL	-	expression tag	UNP P11229
A	-10	PHE	-	expression tag	UNP P11229
A	-9	ALA	-	expression tag	UNP P11229
A	-8	ASP	-	expression tag	UNP P11229
A	-7	TYR	-	expression tag	UNP P11229
A	-6	LYS	-	expression tag	UNP P11229
A	-5	ASP	-	expression tag	UNP P11229
A	-4	ASP	-	expression tag	UNP P11229
A	-3	ASP	-	expression tag	UNP P11229
A	-2	ASP	-	expression tag	UNP P11229
A	-1	ALA	-	expression tag	UNP P11229
A	0	ALA	-	expression tag	UNP P11229
A	1	ALA	-	expression tag	UNP P11229

Continued on next page...

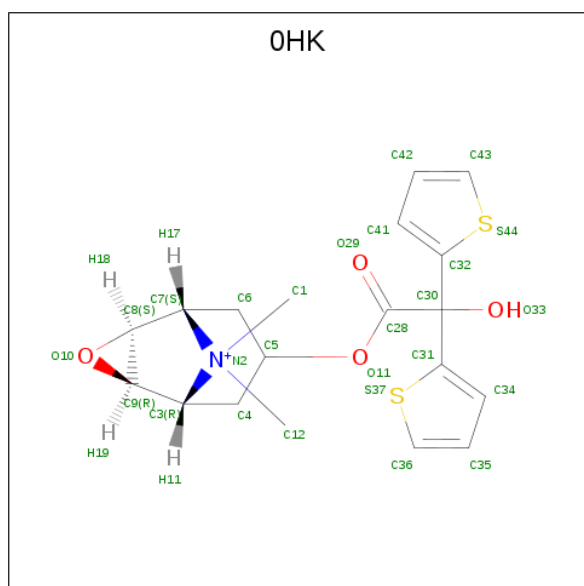
Continued from previous page...

Chain	Residue	Modelled	Actual	Comment	Reference
A	2	GLN	ASN	engineered mutation	UNP P11229
A	12	GLN	ASN	engineered mutation	UNP P11229
A	110	GLN	ASN	engineered mutation	UNP P11229
A	1011	GLY	ARG	variant	UNP P00720
A	1053	THR	CYS	engineered mutation	UNP P00720
A	1096	ALA	CYS	engineered mutation	UNP P00720
A	1136	ARG	ILE	variant	UNP P00720
A	461	HIS	-	expression tag	UNP P11229
A	462	HIS	-	expression tag	UNP P11229
A	463	HIS	-	expression tag	UNP P11229
A	464	HIS	-	expression tag	UNP P11229
A	465	HIS	-	expression tag	UNP P11229
A	466	HIS	-	expression tag	UNP P11229

- Molecule 2 is a protein called FLAG peptide.

Mol	Chain	Residues	Atoms				ZeroOcc	AltConf	Trace
			Total	C	N	O			
2	C	7	61	35	8	18	0	0	0

- Molecule 3 is (1R,2R,4S,5S,7S)-7-{[hydroxy(dithiophen-2-yl)acetyl]oxy}-9,9-dimethyl-3-oxa-9-azoniatricyclo[3.3.1.0 2,4]nonane (three-letter code: OHK) (formula: C₁₉H₂₂NO₄S₂).

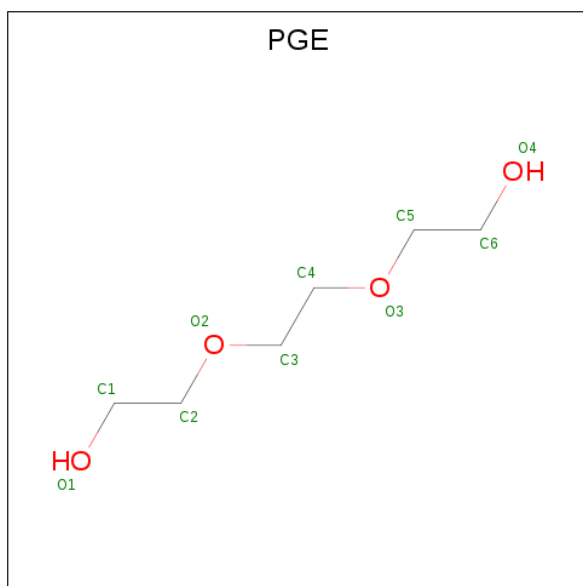


Mol	Chain	Residues	Atoms					ZeroOcc	AltConf
			Total	C	N	O	S		
3	A	1	26	19	1	4	2	0	0

Continued from previous page...

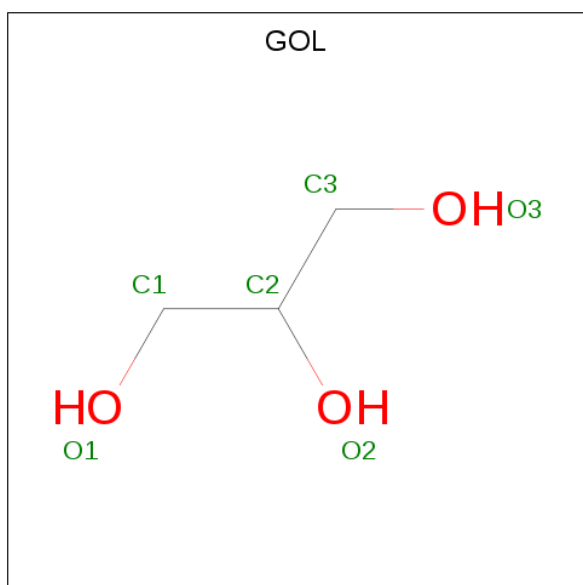
Mol	Chain	Residues	Atoms			ZeroOcc	AltConf
5	A	1	Total	C	O	0	0
			4	2	2		

- Molecule 6 is TRIETHYLENE GLYCOL (three-letter code: PGE) (formula: $C_6H_{14}O_4$).



Mol	Chain	Residues	Atoms			ZeroOcc	AltConf
6	A	1	Total	C	O	0	0
			10	6	4		

- Molecule 7 is GLYCEROL (three-letter code: GOL) (formula: $C_3H_8O_3$).



Mol	Chain	Residues	Atoms			ZeroOcc	AltConf
7	A	1	Total	C	O	0	0
			6	3	3		

- Molecule 8 is water.

Mol	Chain	Residues	Atoms		ZeroOcc	AltConf
8	A	6	Total	O	0	0
			6	6		
8	C	4	Total	O	0	0
			4	4		

4 Data and refinement statistics

Property	Value	Source
Space group	P 21 21 21	Depositor
Cell constants a, b, c, α , β , γ	58.05Å 72.19Å 175.69Å 90.00° 90.00° 90.00°	Depositor
Resolution (Å)	30.00 – 2.70 28.94 – 2.70	Depositor EDS
% Data completeness (in resolution range)	96.0 (30.00-2.70) 96.2 (28.94-2.70)	Depositor EDS
R_{merge}	0.15	Depositor
R_{sym}	(Not available)	Depositor
$\langle I/\sigma(I) \rangle$ ¹	1.22 (at 2.68Å)	Xtrriage
Refinement program	REFMAC 5.8.0107	Depositor
R, R_{free}	0.231 , 0.282 0.233 , 0.283	Depositor DCC
R_{free} test set	1016 reflections (4.99%)	wwPDB-VP
Wilson B-factor (Å ²)	70.0	Xtrriage
Anisotropy	0.285	Xtrriage
Bulk solvent k_{sol} (e/Å ³), B_{sol} (Å ²)	0.33 , 61.7	EDS
L-test for twinning ²	$\langle L \rangle = 0.49$, $\langle L^2 \rangle = 0.32$	Xtrriage
Estimated twinning fraction	No twinning to report.	Xtrriage
F_o, F_c correlation	0.93	EDS
Total number of atoms	3599	wwPDB-VP
Average B, all atoms (Å ²)	73.0	wwPDB-VP

Xtrriage's analysis on translational NCS is as follows: *The largest off-origin peak in the Patterson function is 4.50% of the height of the origin peak. No significant pseudotranslation is detected.*

¹Intensities estimated from amplitudes.

²Theoretical values of $\langle |L| \rangle$, $\langle L^2 \rangle$ for acentric reflections are 0.5, 0.333 respectively for untwinned datasets, and 0.375, 0.2 for perfectly twinned datasets.

5 Model quality [i](#)

5.1 Standard geometry [i](#)

Bond lengths and bond angles in the following residue types are not validated in this section: 0HK, GOL, PGE, Y01, EDO

The Z score for a bond length (or angle) is the number of standard deviations the observed value is removed from the expected value. A bond length (or angle) with $|Z| > 5$ is considered an outlier worth inspection. RMSZ is the root-mean-square of all Z scores of the bond lengths (or angles).

Mol	Chain	Bond lengths		Bond angles	
		RMSZ	# Z >5	RMSZ	# Z >5
1	A	0.30	0/3520	0.47	1/4807 (0.0%)
2	C	0.21	0/61	0.43	0/81
All	All	0.30	0/3581	0.47	1/4888 (0.0%)

There are no bond length outliers.

All (1) bond angle outliers are listed below:

Mol	Chain	Res	Type	Atoms	Z	Observed(°)	Ideal(°)
1	A	376	LEU	CA-CB-CG	5.15	127.14	115.30

There are no chirality outliers.

There are no planarity outliers.

5.2 Too-close contacts [i](#)

In the following table, the Non-H and H(model) columns list the number of non-hydrogen atoms and hydrogen atoms in the chain respectively. The H(added) column lists the number of hydrogen atoms added and optimized by MolProbity. The Clashes column lists the number of clashes within the asymmetric unit, whereas Symm-Clashes lists symmetry related clashes.

Mol	Chain	Non-H	H(model)	H(added)	Clashes	Symm-Clashes
1	A	3439	0	3402	53	0
2	C	61	0	44	3	0
3	A	26	0	22	1	0
4	A	35	0	49	0	0
5	A	12	0	18	0	0
6	A	10	0	14	0	0
7	A	6	0	8	0	0
8	A	6	0	0	1	0

Continued on next page...

Continued from previous page...

Mol	Chain	Non-H	H(model)	H(added)	Clashes	Symm-Clashes
8	C	4	0	0	0	0
All	All	3599	0	3557	55	0

The all-atom clashscore is defined as the number of clashes found per 1000 atoms (including hydrogen atoms). The all-atom clashscore for this structure is 8.

All (55) close contacts within the same asymmetric unit are listed below, sorted by their clash magnitude.

Atom-1	Atom-2	Interatomic distance (Å)	Clash overlap (Å)
1:A:173:VAL:HG23	1:A:179:TYR:CE2	2.09	0.87
1:A:1086:VAL:HG12	1:A:1121:GLN:HB2	1.66	0.76
2:C:2:TYR:O	2:C:4:ASP:N	2.21	0.73
1:A:1033:THR:HG22	1:A:1035:SER:H	1.53	0.73
1:A:218:ARG:NH2	1:A:360:GLU:OE2	2.25	0.70
1:A:173:VAL:HG23	1:A:179:TYR:CZ	2.31	0.65
1:A:91:TRP:N	1:A:176:GLY:O	2.19	0.64
1:A:423:LYS:HG2	1:A:424:ALA:H	1.65	0.62
1:A:25:VAL:HA	1:A:87:LEU:HD22	1.83	0.61
1:A:418:TYR:O	1:A:422:ASN:HB3	2.00	0.61
3:A:501:0HK:H20	3:A:501:0HK:O10	2.03	0.58
1:A:79:MET:SD	1:A:408:TYR:HB3	2.44	0.57
1:A:420:LEU:HD12	1:A:421:CYS:N	2.21	0.56
1:A:109:SER:HB3	1:A:378:TRP:HH2	1.72	0.55
1:A:72:LEU:O	1:A:76:THR:HG22	2.07	0.55
1:A:137:ARG:NH2	2:C:1:ASP:HB3	2.22	0.55
1:A:99:ASP:HB3	1:A:162:LEU:HD23	1.89	0.55
1:A:187:ILE:HD12	1:A:187:ILE:H	1.73	0.53
1:A:1065:LEU:O	1:A:1068:GLN:HG3	2.09	0.52
1:A:123:ARG:NH1	8:A:601:HOH:O	2.41	0.52
1:A:1010:GLU:OE2	1:A:1144:ARG:NH1	2.34	0.52
1:A:366:THR:HG21	1:A:418:TYR:HB3	1.92	0.52
1:A:416:MET:O	1:A:420:LEU:HG	2.10	0.51
1:A:434:LEU:HB3	1:A:436:ARG:HG2	1.94	0.50
1:A:1119:MET:HE3	1:A:1128:ALA:HA	1.94	0.50
1:A:115:ASN:N	1:A:115:ASN:HD22	2.10	0.49
1:A:385:VAL:O	1:A:389:THR:HG23	2.12	0.49
1:A:76:THR:HG23	1:A:77:PHE:CD2	2.47	0.49
1:A:360:GLU:HG3	2:C:3:LYS:H	1.77	0.49
1:A:372:LEU:O	1:A:376:LEU:HG	2.12	0.49
1:A:376:LEU:HD12	1:A:377:THR:HG23	1.95	0.48
1:A:207:LEU:O	1:A:210:ARG:N	2.47	0.48

Continued on next page...

Continued from previous page...

Atom-1	Atom-2	Interatomic distance (Å)	Clash overlap (Å)
1:A:375:ILE:O	1:A:379:THR:OG1	2.24	0.47
1:A:174:LEU:H	1:A:174:LEU:HD22	1.80	0.47
1:A:423:LYS:O	1:A:425:PHE:N	2.47	0.46
1:A:384:MET:HE1	1:A:400:TRP:HA	1.98	0.46
1:A:109:SER:HB3	1:A:378:TRP:CH2	2.51	0.44
1:A:28:ILE:O	1:A:32:THR:HG23	2.17	0.44
1:A:207:LEU:O	1:A:211:ILE:HD12	2.18	0.44
1:A:1116:SER:HA	1:A:1119:MET:HE2	1.99	0.44
1:A:1142:PRO:O	1:A:1146:LYS:HG3	2.18	0.44
1:A:418:TYR:O	1:A:422:ASN:CB	2.65	0.44
1:A:186:PRO:HA	1:A:189:THR:HG22	2.00	0.43
1:A:1125:TRP:HB3	1:A:1153:ARG:HA	2.00	0.43
1:A:188:ILE:O	1:A:192:THR:HG23	2.18	0.43
1:A:1082:LYS:HD2	1:A:1082:LYS:O	2.18	0.43
1:A:434:LEU:CB	1:A:436:ARG:HG2	2.49	0.42
1:A:415:PRO:O	1:A:419:ALA:HB3	2.19	0.42
1:A:33:GLY:O	1:A:37:LEU:HD12	2.19	0.42
1:A:399:LEU:HD23	1:A:399:LEU:HA	1.93	0.41
1:A:218:ARG:HH22	1:A:360:GLU:CD	2.24	0.41
1:A:396:PRO:HD2	1:A:399:LEU:HD12	2.02	0.41
1:A:82:TYR:HB2	1:A:101:TRP:HZ2	1.85	0.41
1:A:50:PHE:CE2	1:A:57:LYS:HA	2.55	0.41
1:A:86:LEU:HD11	1:A:401:GLU:HB3	2.03	0.40

There are no symmetry-related clashes.

5.3 Torsion angles [i](#)

5.3.1 Protein backbone [i](#)

In the following table, the Percentiles column shows the percent Ramachandran outliers of the chain as a percentile score with respect to all X-ray entries followed by that with respect to entries of similar resolution.

The Analysed column shows the number of residues for which the backbone conformation was analysed, and the total number of residues.

Mol	Chain	Analysed	Favoured	Allowed	Outliers	Percentiles
1	A	442/515 (86%)	429 (97%)	13 (3%)	0	100 100
2	C	5/7 (71%)	3 (60%)	1 (20%)	1 (20%)	0 0

Continued on next page...

Continued from previous page...

Mol	Chain	Analysed	Favoured	Allowed	Outliers	Percentiles
All	All	447/522 (86%)	432 (97%)	14 (3%)	1 (0%)	47 73

All (1) Ramachandran outliers are listed below:

Mol	Chain	Res	Type
2	C	3	LYS

5.3.2 Protein sidechains [i](#)

In the following table, the Percentiles column shows the percent sidechain outliers of the chain as a percentile score with respect to all X-ray entries followed by that with respect to entries of similar resolution.

The Analysed column shows the number of residues for which the sidechain conformation was analysed, and the total number of residues.

Mol	Chain	Analysed	Rotameric	Outliers	Percentiles
1	A	346/441 (78%)	334 (96%)	12 (4%)	36 65
2	C	7/7 (100%)	7 (100%)	0	100 100
All	All	353/448 (79%)	341 (97%)	12 (3%)	37 66

All (12) residues with a non-rotameric sidechain are listed below:

Mol	Chain	Res	Type
1	A	35	LEU
1	A	52	VAL
1	A	67	LEU
1	A	114	MET
1	A	115	ASN
1	A	171	ARG
1	A	1051	ARG
1	A	1060	ASP
1	A	1103	PHE
1	A	355	PHE
1	A	391	CYS
1	A	427	ASP

Some sidechains can be flipped to improve hydrogen bonding and reduce clashes. All (1) such sidechains are listed below:

Mol	Chain	Res	Type
1	A	1030	HIS

5.3.3 RNA [i](#)

There are no RNA molecules in this entry.

5.4 Non-standard residues in protein, DNA, RNA chains [i](#)

There are no non-standard protein/DNA/RNA residues in this entry.

5.5 Carbohydrates [i](#)

There are no monosaccharides in this entry.

5.6 Ligand geometry [i](#)

7 ligands are modelled in this entry.

In the following table, the Counts columns list the number of bonds (or angles) for which Mogul statistics could be retrieved, the number of bonds (or angles) that are observed in the model and the number of bonds (or angles) that are defined in the Chemical Component Dictionary. The Link column lists molecule types, if any, to which the group is linked. The Z score for a bond length (or angle) is the number of standard deviations the observed value is removed from the expected value. A bond length (or angle) with $|Z| > 2$ is considered an outlier worth inspection. RMSZ is the root-mean-square of all Z scores of the bond lengths (or angles).

Mol	Type	Chain	Res	Link	Bond lengths			Bond angles		
					Counts	RMSZ	$\# Z > 2$	Counts	RMSZ	$\# Z > 2$
6	PGE	A	504	-	9,9,9	0.30	0	8,8,8	0.35	0
7	GOL	A	506	-	5,5,5	0.37	0	5,5,5	0.26	0
3	0HK	A	501	-	28,30,30	0.58	0	38,48,48	2.15	8 (21%)
5	EDO	A	507	-	3,3,3	0.45	0	2,2,2	0.34	0
5	EDO	A	503	-	3,3,3	0.46	0	2,2,2	0.36	0
4	Y01	A	502	-	35,38,38	1.02	1 (2%)	54,57,57	1.24	5 (9%)
5	EDO	A	505	-	3,3,3	0.47	0	2,2,2	0.30	0

In the following table, the Chirals column lists the number of chiral outliers, the number of chiral centers analysed, the number of these observed in the model and the number defined in the Chemical Component Dictionary. Similar counts are reported in the Torsion and Rings columns. '-' means no outliers of that kind were identified.

Mol	Type	Chain	Res	Link	Chirals	Torsions	Rings
6	PGE	A	504	-	-	4/7/7/7	-
7	GOL	A	506	-	-	0/4/4/4	-
3	0HK	A	501	-	-	1/10/55/55	0/6/5/5
5	EDO	A	507	-	-	1/1/1/1	-
5	EDO	A	503	-	-	1/1/1/1	-
4	Y01	A	502	-	-	5/17/77/77	0/4/4/4
5	EDO	A	505	-	-	0/1/1/1	-

All (1) bond length outliers are listed below:

Mol	Chain	Res	Type	Atoms	Z	Observed(Å)	Ideal(Å)
4	A	502	Y01	OAW-CAY	4.60	1.47	1.34

All (13) bond angle outliers are listed below:

Mol	Chain	Res	Type	Atoms	Z	Observed(°)	Ideal(°)
3	A	501	0HK	C4-C3-N2	7.51	113.54	108.82
3	A	501	0HK	C6-C7-N2	5.93	112.55	108.82
3	A	501	0HK	C8-C7-N2	-4.68	100.64	103.54
3	A	501	0HK	O11-C28-C30	-4.55	103.79	110.82
4	A	502	Y01	OAW-CAY-CAM	3.51	119.07	111.50
4	A	502	Y01	CAV-CAZ-CBH	3.00	120.41	116.42
3	A	501	0HK	O33-C30-C28	-2.59	104.26	107.81
3	A	501	0HK	C9-C3-N2	2.37	105.02	103.54
3	A	501	0HK	C6-C5-C4	2.36	116.60	112.07
4	A	502	Y01	CAV-CAZ-CAI	-2.28	117.32	120.61
3	A	501	0HK	C32-C30-C31	-2.18	106.49	110.58
4	A	502	Y01	CAU-CBI-CBE	-2.06	113.49	116.57
4	A	502	Y01	CAK-CBD-CBG	2.01	113.81	110.91

There are no chirality outliers.

All (12) torsion outliers are listed below:

Mol	Chain	Res	Type	Atoms
3	A	501	0HK	O29-C28-O11-C5
6	A	504	PGE	O1-C1-C2-O2
6	A	504	PGE	O2-C3-C4-O3
4	A	502	Y01	CAO-CAJ-CAN-CBA
4	A	502	Y01	CAJ-CAN-CBA-CAB
6	A	504	PGE	C4-C3-O2-C2
4	A	502	Y01	CAJ-CAN-CBA-CAA
5	A	503	EDO	O1-C1-C2-O2

Continued on next page...

Continued from previous page...

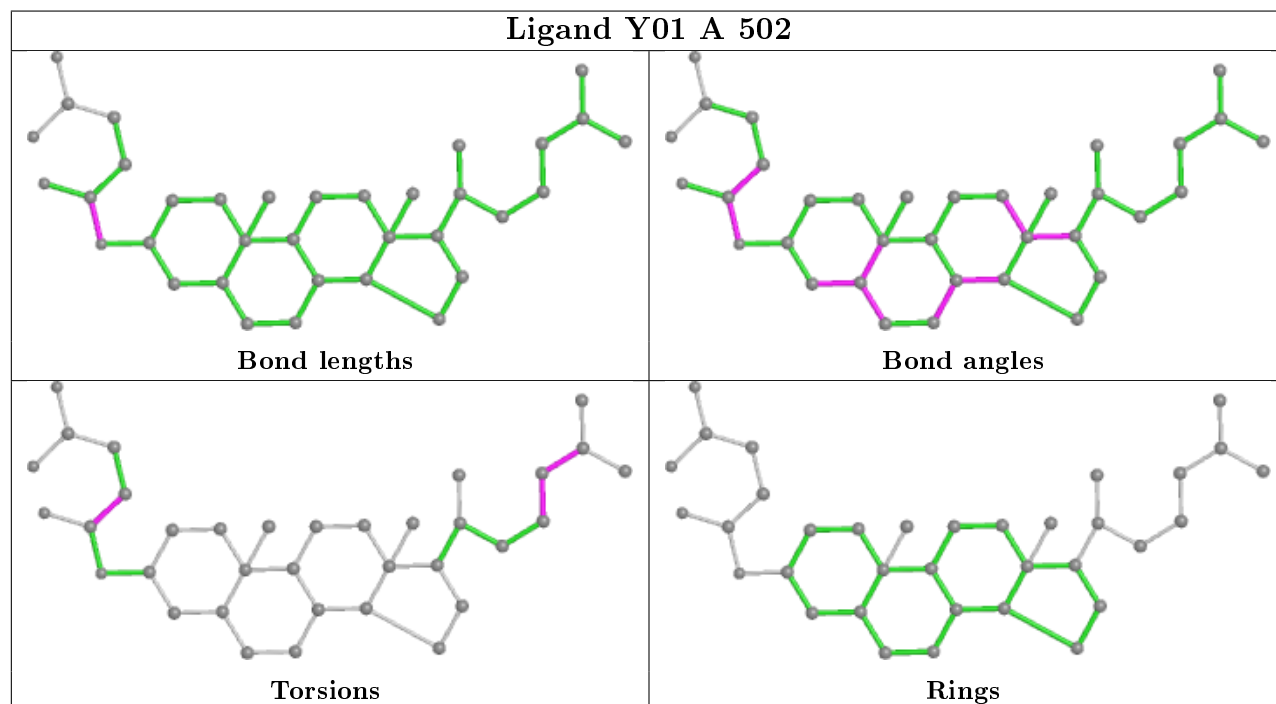
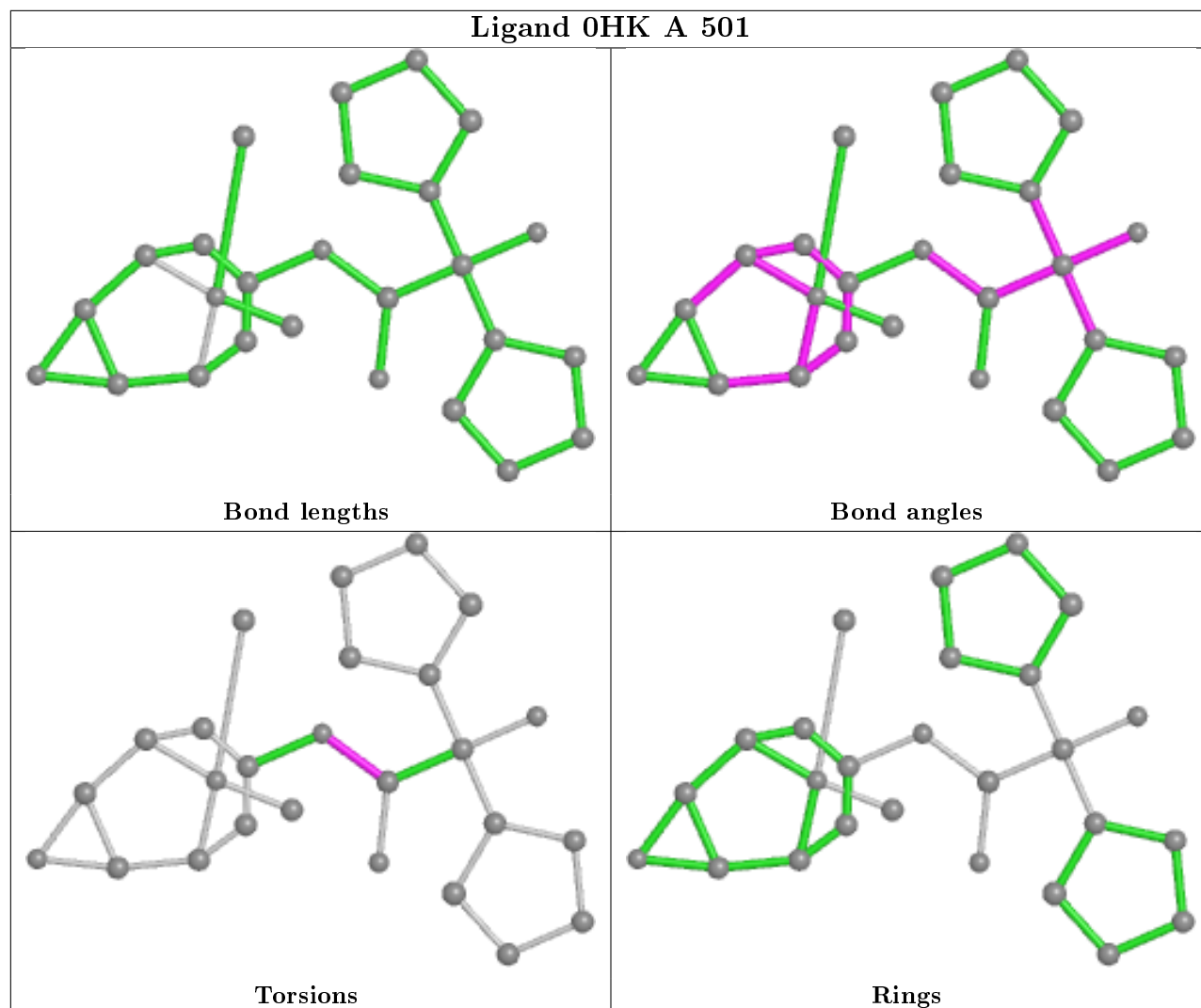
Mol	Chain	Res	Type	Atoms
5	A	507	EDO	O1-C1-C2-O2
6	A	504	PGE	C1-C2-O2-C3
4	A	502	Y01	CAL-CAM-CAY-OAW
4	A	502	Y01	CAL-CAM-CAY-OAG

There are no ring outliers.

1 monomer is involved in 1 short contact:

Mol	Chain	Res	Type	Clashes	Symm-Clashes
3	A	501	0HK	1	0

The following is a two-dimensional graphical depiction of Mogul quality analysis of bond lengths, bond angles, torsion angles, and ring geometry for all instances of the Ligand of Interest. In addition, ligands with molecular weight > 250 and outliers as shown on the validation Tables will also be included. For torsion angles, if less than 5% of the Mogul distribution of torsion angles is within 10 degrees of the torsion angle in question, then that torsion angle is considered an outlier. Any bond that is central to one or more torsion angles identified as an outlier by Mogul will be highlighted in the graph. For rings, the root-mean-square deviation (RMSD) between the ring in question and similar rings identified by Mogul is calculated over all ring torsion angles. If the average RMSD is greater than 60 degrees and the minimal RMSD between the ring in question and any Mogul-identified rings is also greater than 60 degrees, then that ring is considered an outlier. The outliers are highlighted in purple. The color gray indicates Mogul did not find sufficient equivalents in the CSD to analyse the geometry.



5.7 Other polymers [i](#)

There are no such residues in this entry.

5.8 Polymer linkage issues [i](#)

There are no chain breaks in this entry.

6 Fit of model and data

6.1 Protein, DNA and RNA chains

In the following table, the column labelled ‘#RSRZ> 2’ contains the number (and percentage) of RSRZ outliers, followed by percent RSRZ outliers for the chain as percentile scores relative to all X-ray entries and entries of similar resolution. The OWAB column contains the minimum, median, 95th percentile and maximum values of the occupancy-weighted average B-factor per residue. The column labelled ‘Q< 0.9’ lists the number of (and percentage) of residues with an average occupancy less than 0.9.

Mol	Chain	Analysed	<RSRZ>	#RSRZ>2	OWAB(Å ²)	Q<0.9
1	A	444/515 (86%)	0.17	24 (5%) 25 24	50, 70, 108, 127	0
2	C	7/7 (100%)	-0.25	0 100 100	66, 77, 83, 83	0
All	All	451/522 (86%)	0.17	24 (5%) 26 25	50, 70, 108, 127	0

All (24) RSRZ outliers are listed below:

Mol	Chain	Res	Type	RSRZ
1	A	439	LYS	5.7
1	A	1055	GLY	5.4
1	A	1040	ALA	4.3
1	A	390	PHE	4.2
1	A	438	ASP	3.9
1	A	437	TRP	3.9
1	A	1056	VAL	3.6
1	A	1036	PRO	3.5
1	A	391	CYS	3.3
1	A	1037	SER	3.1
1	A	393	ASP	2.8
1	A	174	LEU	2.8
1	A	1039	ASN	2.7
1	A	212	TYR	2.7
1	A	1050	GLY	2.6
1	A	1035	SER	2.6
1	A	1043	SER	2.4
1	A	392	LYS	2.3
1	A	398	THR	2.3
1	A	206	THR	2.3
1	A	1044	GLU	2.2
1	A	436	ARG	2.2
1	A	186	PRO	2.0
1	A	1088	ASP	2.0

6.2 Non-standard residues in protein, DNA, RNA chains [i](#)

There are no non-standard protein/DNA/RNA residues in this entry.

6.3 Carbohydrates [i](#)

There are no monosaccharides in this entry.

6.4 Ligands [i](#)

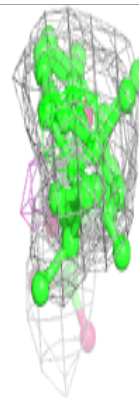
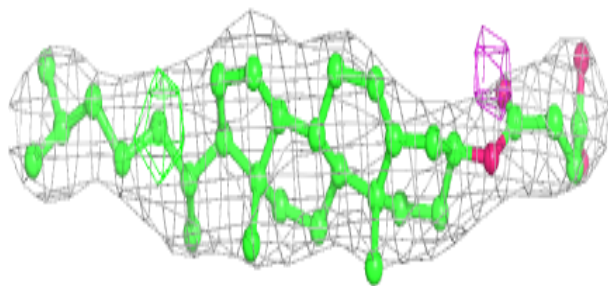
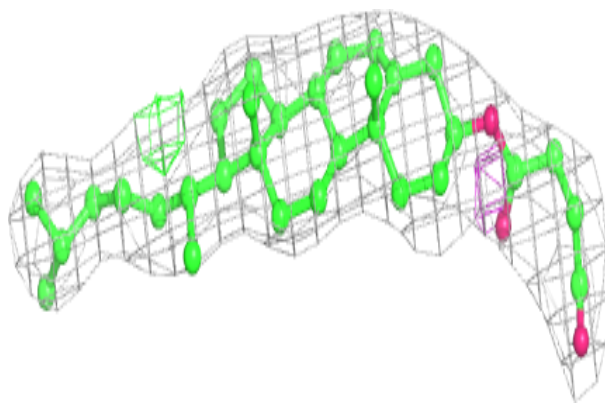
In the following table, the Atoms column lists the number of modelled atoms in the group and the number defined in the chemical component dictionary. The B-factors column lists the minimum, median, 95th percentile and maximum values of B factors of atoms in the group. The column labelled 'Q< 0.9' lists the number of atoms with occupancy less than 0.9.

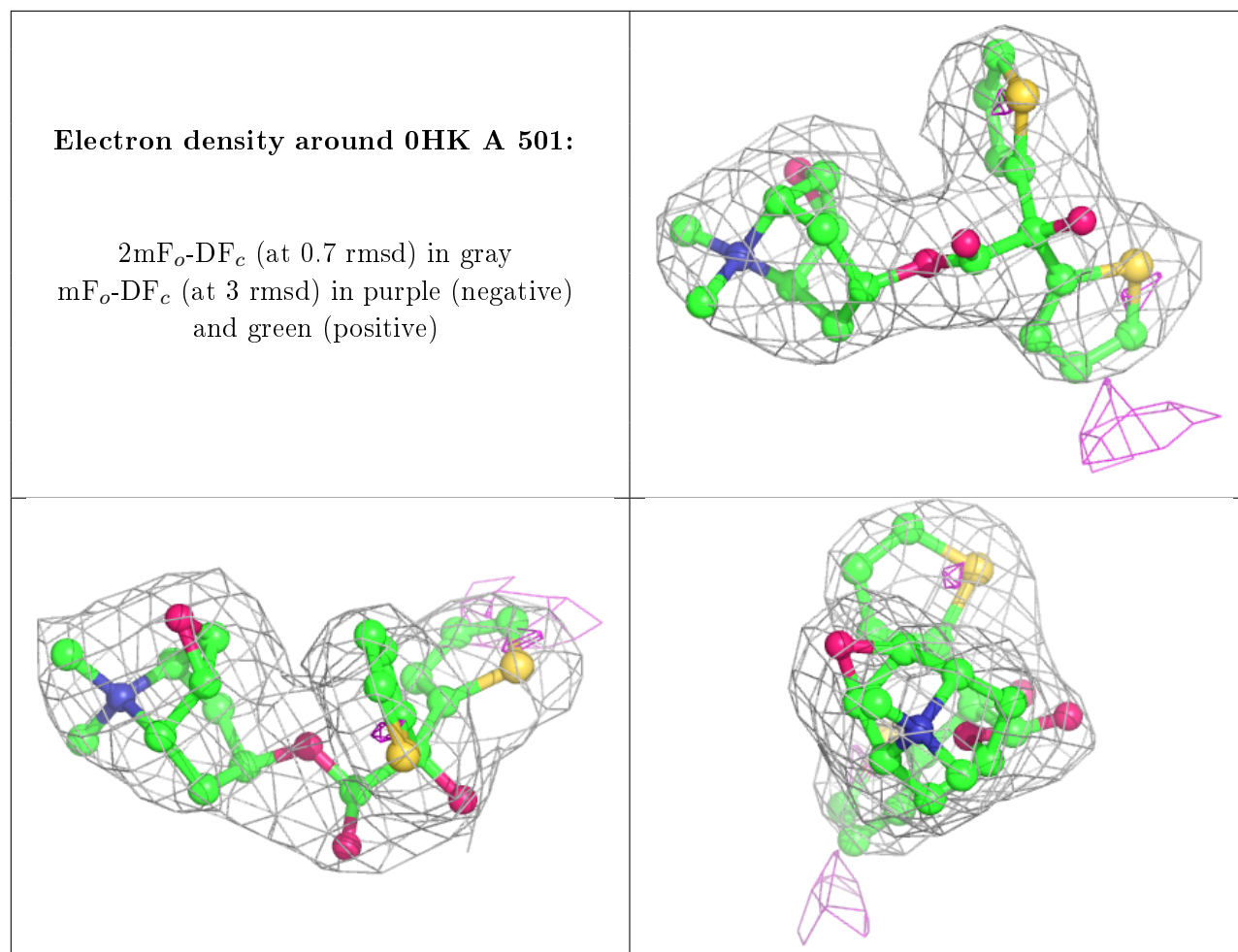
Mol	Type	Chain	Res	Atoms	RSCC	RSR	B-factors(Å ²)	Q<0.9
5	EDO	A	503	4/4	0.70	0.22	86,90,94,95	0
6	PGE	A	504	10/10	0.74	0.36	63,81,87,88	0
7	GOL	A	506	6/6	0.81	0.25	82,87,89,91	0
4	Y01	A	502	35/35	0.90	0.21	68,71,91,92	0
5	EDO	A	507	4/4	0.91	0.25	70,74,78,80	0
5	EDO	A	505	4/4	0.91	0.33	69,72,78,86	0
3	0HK	A	501	26/26	0.94	0.23	55,65,76,76	0

The following is a graphical depiction of the model fit to experimental electron density of all instances of the Ligand of Interest. In addition, ligands with molecular weight > 250 and outliers as shown on the geometry validation Tables will also be included. Each fit is shown from different orientation to approximate a three-dimensional view.

Electron density around Y01 A 502:

$2mF_o-DF_c$ (at 0.7 rmsd) in gray
 mF_o-DF_c (at 3 rmsd) in purple (negative)
and green (positive)





6.5 Other polymers [i](#)

There are no such residues in this entry.