



Full wwPDB X-ray Structure Validation Report ⓘ

Sep 26, 2023 – 07:01 PM EDT

PDB ID : 6CXV
Title : Structure of the S167H mutant of human indoleamine 2,3 dioxygenase in complex with tryptophan and cyanide
Authors : Lewis-Ballester, A.; Yeh, S.-R.; Karkashon, S.; Batabyal, D.; Poulos, T.L.
Deposited on : 2018-04-04
Resolution : 2.60 Å(reported)

This is a Full wwPDB X-ray Structure Validation Report for a publicly released PDB entry.

We welcome your comments at validation@mail.wwpdb.org

A user guide is available at

<https://www.wwpdb.org/validation/2017/XrayValidationReportHelp>

with specific help available everywhere you see the ⓘ symbol.

The types of validation reports are described at

<http://www.wwpdb.org/validation/2017/FAQs#types>.

The following versions of software and data (see [references ⓘ](#)) were used in the production of this report:

MolProbity : 4.02b-467
Mogul : 1.8.5 (274361), CSD as541be (2020)
Xtrriage (Phenix) : 1.13
EDS : 2.35.1
buster-report : 1.1.7 (2018)
Percentile statistics : 20191225.v01 (using entries in the PDB archive December 25th 2019)
Refmac : 5.8.0158
CCP4 : 7.0.044 (Gargrove)
Ideal geometry (proteins) : Engh & Huber (2001)
Ideal geometry (DNA, RNA) : Parkinson et al. (1996)
Validation Pipeline (wwPDB-VP) : 2.35.1

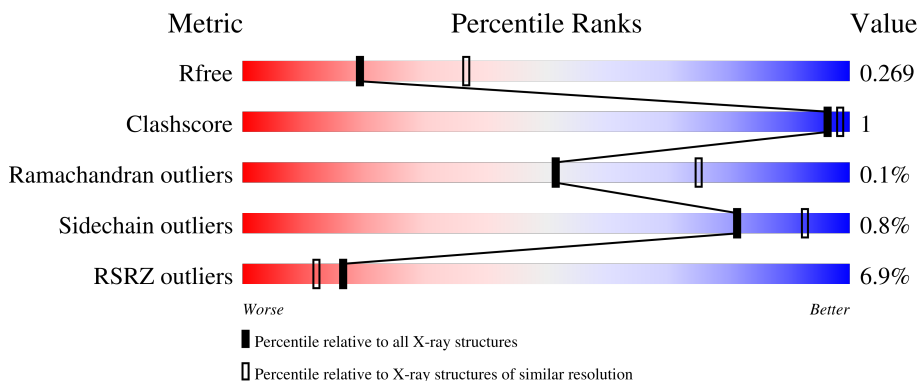
1 Overall quality at a glance

The following experimental techniques were used to determine the structure:

X-RAY DIFFRACTION

The reported resolution of this entry is 2.60 Å.

Percentile scores (ranging between 0-100) for global validation metrics of the entry are shown in the following graphic. The table shows the number of entries on which the scores are based.



Metric	Whole archive (#Entries)	Similar resolution (#Entries, resolution range(Å))
R_{free}	130704	3163 (2.60-2.60)
Clashscore	141614	3518 (2.60-2.60)
Ramachandran outliers	138981	3455 (2.60-2.60)
Sidechain outliers	138945	3455 (2.60-2.60)
RSRZ outliers	127900	3104 (2.60-2.60)

The table below summarises the geometric issues observed across the polymeric chains and their fit to the electron density. The red, orange, yellow and green segments of the lower bar indicate the fraction of residues that contain outliers for ≥ 3 , 2, 1 and 0 types of geometric quality criteria respectively. A grey segment represents the fraction of residues that are not modelled. The numeric value for each fraction is indicated below the corresponding segment, with a dot representing fractions $\leq 5\%$. The upper red bar (where present) indicates the fraction of residues that have poor fit to the electron density. The numeric value is given above the bar.

Mol	Chain	Length	Quality of chain
1	A	425	 7% 85% 11%
1	B	425	 6% 87% 11%

2 Entry composition [i](#)

There are 6 unique types of molecules in this entry. The entry contains 6312 atoms, of which 0 are hydrogens and 0 are deuteriums.

In the tables below, the ZeroOcc column contains the number of atoms modelled with zero occupancy, the AltConf column contains the number of residues with at least one atom in alternate conformation and the Trace column contains the number of residues modelled with at most 2 atoms.

- Molecule 1 is a protein called Indoleamine 2,3-dioxygenase 1.

Mol	Chain	Residues	Atoms					ZeroOcc	AltConf	Trace
			Total	C	N	O	S			
1	A	378	2970	1908	509	536	17	0	0	0
1	B	377	2970	1910	510	533	17	0	0	0

There are 68 discrepancies between the modelled and reference sequences:

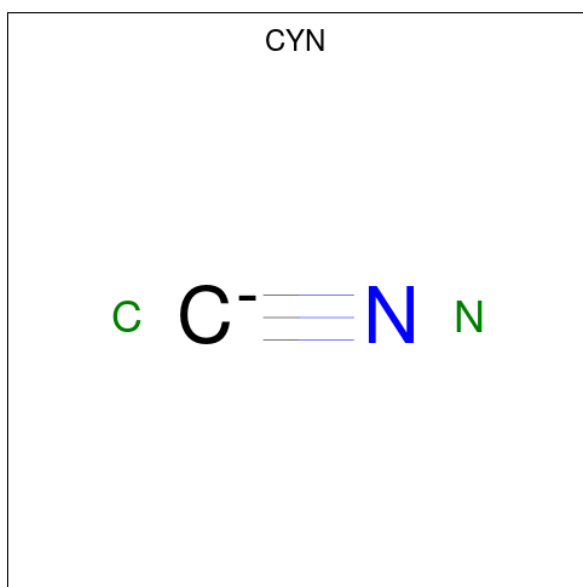
Chain	Residue	Modelled	Actual	Comment	Reference
A	11	MET	-	initiating methionine	UNP P14902
A	167	HIS	SER	engineered mutation	UNP P14902
A	404	LYS	-	expression tag	UNP P14902
A	405	GLY	-	expression tag	UNP P14902
A	406	GLU	-	expression tag	UNP P14902
A	407	LEU	-	expression tag	UNP P14902
A	408	ASN	-	expression tag	UNP P14902
A	409	SER	-	expression tag	UNP P14902
A	410	LYS	-	expression tag	UNP P14902
A	411	LEU	-	expression tag	UNP P14902
A	412	GLU	-	expression tag	UNP P14902
A	413	GLY	-	expression tag	UNP P14902
A	414	LYS	-	expression tag	UNP P14902
A	415	PRO	-	expression tag	UNP P14902
A	416	ILE	-	expression tag	UNP P14902
A	417	PRO	-	expression tag	UNP P14902
A	418	ASN	-	expression tag	UNP P14902
A	419	PRO	-	expression tag	UNP P14902
A	420	LEU	-	expression tag	UNP P14902
A	421	LEU	-	expression tag	UNP P14902
A	422	GLY	-	expression tag	UNP P14902
A	423	LEU	-	expression tag	UNP P14902
A	424	ASP	-	expression tag	UNP P14902
A	425	SER	-	expression tag	UNP P14902
A	426	THR	-	expression tag	UNP P14902

Continued on next page...

Continued from previous page...

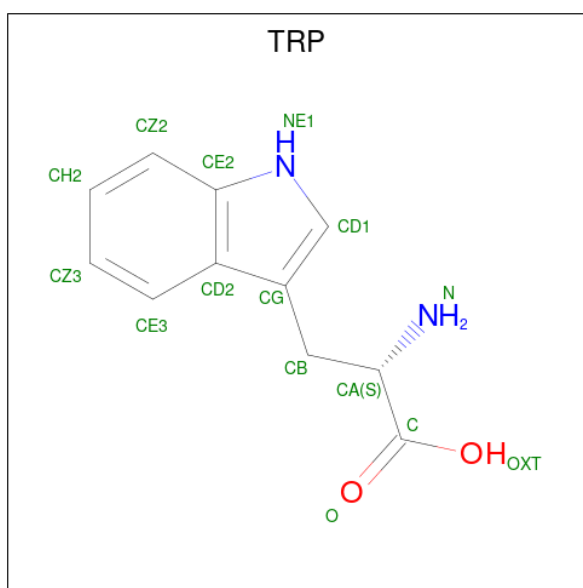
Chain	Residue	Modelled	Actual	Comment	Reference
A	427	ARG	-	expression tag	UNP P14902
A	428	THR	-	expression tag	UNP P14902
A	429	GLY	-	expression tag	UNP P14902
A	430	HIS	-	expression tag	UNP P14902
A	431	HIS	-	expression tag	UNP P14902
A	432	HIS	-	expression tag	UNP P14902
A	433	HIS	-	expression tag	UNP P14902
A	434	HIS	-	expression tag	UNP P14902
A	435	HIS	-	expression tag	UNP P14902
B	11	MET	-	initiating methionine	UNP P14902
B	167	HIS	SER	engineered mutation	UNP P14902
B	404	LYS	-	expression tag	UNP P14902
B	405	GLY	-	expression tag	UNP P14902
B	406	GLU	-	expression tag	UNP P14902
B	407	LEU	-	expression tag	UNP P14902
B	408	ASN	-	expression tag	UNP P14902
B	409	SER	-	expression tag	UNP P14902
B	410	LYS	-	expression tag	UNP P14902
B	411	LEU	-	expression tag	UNP P14902
B	412	GLU	-	expression tag	UNP P14902
B	413	GLY	-	expression tag	UNP P14902
B	414	LYS	-	expression tag	UNP P14902
B	415	PRO	-	expression tag	UNP P14902
B	416	ILE	-	expression tag	UNP P14902
B	417	PRO	-	expression tag	UNP P14902
B	418	ASN	-	expression tag	UNP P14902
B	419	PRO	-	expression tag	UNP P14902
B	420	LEU	-	expression tag	UNP P14902
B	421	LEU	-	expression tag	UNP P14902
B	422	GLY	-	expression tag	UNP P14902
B	423	LEU	-	expression tag	UNP P14902
B	424	ASP	-	expression tag	UNP P14902
B	425	SER	-	expression tag	UNP P14902
B	426	THR	-	expression tag	UNP P14902
B	427	ARG	-	expression tag	UNP P14902
B	428	THR	-	expression tag	UNP P14902
B	429	GLY	-	expression tag	UNP P14902
B	430	HIS	-	expression tag	UNP P14902
B	431	HIS	-	expression tag	UNP P14902
B	432	HIS	-	expression tag	UNP P14902
B	433	HIS	-	expression tag	UNP P14902
B	434	HIS	-	expression tag	UNP P14902

Continued on next page...



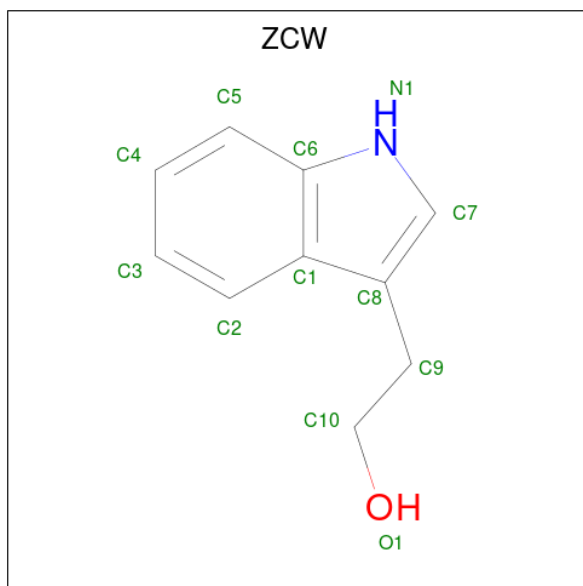
Mol	Chain	Residues	Atoms			ZeroOcc	AltConf
			Total	C	N		
3	A	1	2	1	1	0	0
3	B	1	2	1	1	0	0

- Molecule 4 is TRYPTOPHAN (three-letter code: TRP) (formula: $C_{11}H_{12}N_2O_2$).



Mol	Chain	Residues	Atoms				ZeroOcc	AltConf
			Total	C	N	O		
4	A	1	15	11	2	2	0	0
4	B	1	15	11	2	2	0	0

- Molecule 5 is 2-(1H-indol-3-yl)ethanol (three-letter code: ZCW) (formula: C₁₀H₁₁NO).



Mol	Chain	Residues	Atoms			ZeroOcc	AltConf	
5	A	1	Total	C	N	O	0	0
			12	10	1	1		
5	B	1	Total	C	N	O	0	0
			12	10	1	1		

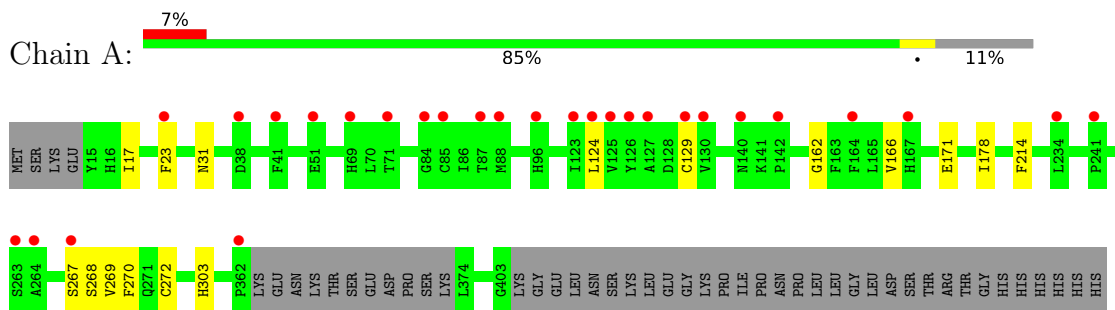
- Molecule 6 is water.

Mol	Chain	Residues	Atoms		ZeroOcc	AltConf
6	A	119	Total	O	0	0
			119	119		
6	B	109	Total	O	0	0
			109	109		

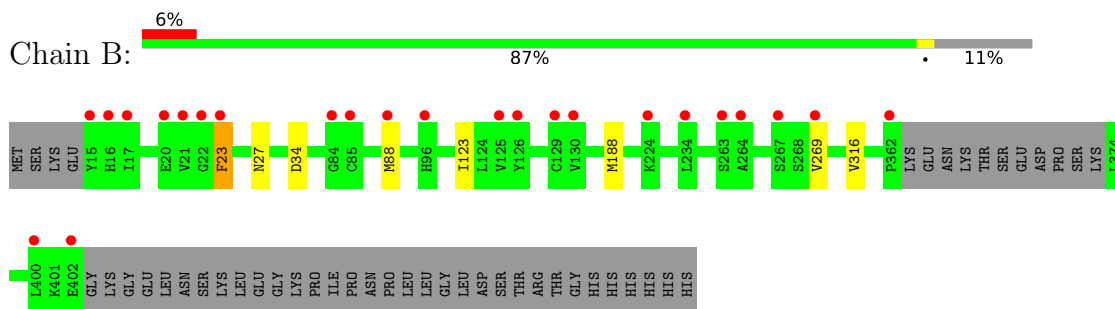
3 Residue-property plots [i](#)

These plots are drawn for all protein, RNA, DNA and oligosaccharide chains in the entry. The first graphic for a chain summarises the proportions of the various outlier classes displayed in the second graphic. The second graphic shows the sequence view annotated by issues in geometry and electron density. Residues are color-coded according to the number of geometric quality criteria for which they contain at least one outlier: green = 0, yellow = 1, orange = 2 and red = 3 or more. A red dot above a residue indicates a poor fit to the electron density ($RSRZ > 2$). Stretches of 2 or more consecutive residues without any outlier are shown as a green connector. Residues present in the sample, but not in the model, are shown in grey.

- Molecule 1: Indoleamine 2,3-dioxygenase 1



- Molecule 1: Indoleamine 2,3-dioxygenase 1



4 Data and refinement statistics

Property	Value	Source
Space group	P 21 21 21	Depositor
Cell constants a, b, c, α , β , γ	88.66Å 98.09Å 126.74Å 90.00° 90.00° 90.00°	Depositor
Resolution (Å)	30.00 – 2.60 29.84 – 2.60	Depositor EDS
% Data completeness (in resolution range)	99.3 (30.00-2.60) 99.4 (29.84-2.60)	Depositor EDS
R_{merge}	0.10	Depositor
R_{sym}	(Not available)	Depositor
$\langle I/\sigma(I) \rangle$ ¹	1.39 (at 2.61Å)	Xtrriage
Refinement program	REFMAC 5.8.0158	Depositor
R, R_{free}	0.208 , 0.266 0.213 , 0.269	Depositor DCC
R_{free} test set	1759 reflections (5.11%)	wwPDB-VP
Wilson B-factor (Å ²)	64.6	Xtrriage
Anisotropy	0.092	Xtrriage
Bulk solvent k_{sol} (e/Å ³), B_{sol} (Å ²)	0.30 , 34.6	EDS
L-test for twinning ²	$\langle L \rangle = 0.49$, $\langle L^2 \rangle = 0.32$	Xtrriage
Estimated twinning fraction	No twinning to report.	Xtrriage
F_o, F_c correlation	0.95	EDS
Total number of atoms	6312	wwPDB-VP
Average B, all atoms (Å ²)	78.0	wwPDB-VP

Xtrriage's analysis on translational NCS is as follows: *The largest off-origin peak in the Patterson function is 3.99% of the height of the origin peak. No significant pseudotranslation is detected.*

¹Intensities estimated from amplitudes.

²Theoretical values of $\langle |L| \rangle$, $\langle L^2 \rangle$ for acentric reflections are 0.5, 0.333 respectively for untwinned datasets, and 0.375, 0.2 for perfectly twinned datasets.

5 Model quality [i](#)

5.1 Standard geometry [i](#)

Bond lengths and bond angles in the following residue types are not validated in this section: ZCW, CYN, HEM

The Z score for a bond length (or angle) is the number of standard deviations the observed value is removed from the expected value. A bond length (or angle) with $|Z| > 5$ is considered an outlier worth inspection. RMSZ is the root-mean-square of all Z scores of the bond lengths (or angles).

Mol	Chain	Bond lengths		Bond angles	
		RMSZ	# Z >5	RMSZ	# Z >5
1	A	0.39	0/3040	0.56	0/4117
1	B	0.38	0/3040	0.57	0/4115
All	All	0.39	0/6080	0.57	0/8232

There are no bond length outliers.

There are no bond angle outliers.

There are no chirality outliers.

There are no planarity outliers.

5.2 Too-close contacts [i](#)

In the following table, the Non-H and H(model) columns list the number of non-hydrogen atoms and hydrogen atoms in the chain respectively. The H(added) column lists the number of hydrogen atoms added and optimized by MolProbity. The Clashes column lists the number of clashes within the asymmetric unit, whereas Symm-Clashes lists symmetry-related clashes.

Mol	Chain	Non-H	H(model)	H(added)	Clashes	Symm-Clashes
1	A	2970	0	2955	7	0
1	B	2970	0	2970	3	0
2	A	43	0	30	1	0
2	B	43	0	30	1	0
3	A	2	0	0	0	0
3	B	2	0	0	0	0
4	A	15	0	9	0	0
4	B	15	0	9	0	0
5	A	12	0	0	0	0
5	B	12	0	0	0	0
6	A	119	0	0	0	0

Continued on next page...

Continued from previous page...

Mol	Chain	Non-H	H(model)	H(added)	Clashes	Symm-Clashes
6	B	109	0	0	0	0
All	All	6312	0	6003	12	0

The all-atom clashscore is defined as the number of clashes found per 1000 atoms (including hydrogen atoms). The all-atom clashscore for this structure is 1.

All (12) close contacts within the same asymmetric unit are listed below, sorted by their clash magnitude.

Atom-1	Atom-2	Interatomic distance (Å)	Clash overlap (Å)
2:A:501:HEM:HMC1	2:A:501:HEM:HBC2	1.87	0.55
1:A:23:PHE:HD2	1:A:269:VAL:HG23	1.74	0.51
1:B:23:PHE:HB2	1:B:269:VAL:CG2	2.40	0.51
1:A:268:SER:OG	1:A:303:HIS:HB3	2.13	0.49
1:B:88:MET:HE1	1:B:123:ILE:HG13	1.96	0.48
2:B:501:HEM:HHD	2:B:501:HEM:HBC2	1.96	0.48
1:A:17:ILE:HG21	1:A:178:ILE:HG21	1.96	0.47
1:A:124:LEU:HD21	1:A:129:CYS:HB3	1.96	0.47
1:A:171:GLU:OE1	1:A:267:SER:OG	2.28	0.42
1:A:267:SER:HB3	1:A:270:PHE:CD2	2.56	0.41
1:A:162:GLY:O	1:A:166:VAL:HG23	2.21	0.41
1:B:188:MET:SD	1:B:316:VAL:HG22	2.61	0.40

There are no symmetry-related clashes.

5.3 Torsion angles [i](#)

5.3.1 Protein backbone [i](#)

In the following table, the Percentiles column shows the percent Ramachandran outliers of the chain as a percentile score with respect to all X-ray entries followed by that with respect to entries of similar resolution.

The Analysed column shows the number of residues for which the backbone conformation was analysed, and the total number of residues.

Mol	Chain	Analysed	Favoured	Allowed	Outliers	Percentiles
1	A	374/425 (88%)	356 (95%)	18 (5%)	0	100 100
1	B	373/425 (88%)	352 (94%)	20 (5%)	1 (0%)	41 64
All	All	747/850 (88%)	708 (95%)	38 (5%)	1 (0%)	51 75

All (1) Ramachandran outliers are listed below:

Mol	Chain	Res	Type
1	B	27	ASN

5.3.2 Protein sidechains [i](#)

In the following table, the Percentiles column shows the percent sidechain outliers of the chain as a percentile score with respect to all X-ray entries followed by that with respect to entries of similar resolution.

The Analysed column shows the number of residues for which the sidechain conformation was analysed, and the total number of residues.

Mol	Chain	Analysed	Rotameric	Outliers	Percentiles	
1	A	319/368 (87%)	316 (99%)	3 (1%)	78	91
1	B	320/368 (87%)	318 (99%)	2 (1%)	86	95
All	All	639/736 (87%)	634 (99%)	5 (1%)	81	92

All (5) residues with a non-rotameric sidechain are listed below:

Mol	Chain	Res	Type
1	A	31	ASN
1	A	214	PHE
1	A	272	CYS
1	B	23	PHE
1	B	34	ASP

Sometimes sidechains can be flipped to improve hydrogen bonding and reduce clashes. All (1) such sidechains are listed below:

Mol	Chain	Res	Type
1	A	215	HIS

5.3.3 RNA [i](#)

There are no RNA molecules in this entry.

5.4 Non-standard residues in protein, DNA, RNA chains [i](#)

There are no non-standard protein/DNA/RNA residues in this entry.

5.5 Carbohydrates [i](#)

There are no monosaccharides in this entry.

5.6 Ligand geometry [i](#)

8 ligands are modelled in this entry.

In the following table, the Counts columns list the number of bonds (or angles) for which Mogul statistics could be retrieved, the number of bonds (or angles) that are observed in the model and the number of bonds (or angles) that are defined in the Chemical Component Dictionary. The Link column lists molecule types, if any, to which the group is linked. The Z score for a bond length (or angle) is the number of standard deviations the observed value is removed from the expected value. A bond length (or angle) with $|Z| > 2$ is considered an outlier worth inspection. RMSZ is the root-mean-square of all Z scores of the bond lengths (or angles).

Mol	Type	Chain	Res	Link	Bond lengths			Bond angles		
					Counts	RMSZ	# Z > 2	Counts	RMSZ	# Z > 2
3	CYN	A	502	-	0,1,1	-	-	-		
5	ZCW	B	504	-	12,13,13	1.20	0	12,17,17	1.22	1 (8%)
2	HEM	A	501	1	41,50,50	1.32	6 (14%)	45,82,82	1.75	10 (22%)
4	TRP	B	503	-	14,16,16	0.89	1 (7%)	16,22,22	1.22	2 (12%)
3	CYN	B	502	-	0,1,1	-	-	-		
2	HEM	B	501	1	41,50,50	1.36	7 (17%)	45,82,82	1.80	12 (26%)
5	ZCW	A	504	-	12,13,13	1.15	0	12,17,17	1.27	2 (16%)
4	TRP	A	503	-	14,16,16	0.90	1 (7%)	16,22,22	1.20	2 (12%)

In the following table, the Chirals column lists the number of chiral outliers, the number of chiral centers analysed, the number of these observed in the model and the number defined in the Chemical Component Dictionary. Similar counts are reported in the Torsion and Rings columns. '-' means no outliers of that kind were identified.

Mol	Type	Chain	Res	Link	Chirals	Torsions	Rings
5	ZCW	B	504	-	-	2/3/3/3	0/2/2/2
2	HEM	A	501	1	-	4/12/54/54	-
4	TRP	B	503	-	-	1/7/8/8	0/2/2/2
2	HEM	B	501	1	-	4/12/54/54	-
5	ZCW	A	504	-	-	2/3/3/3	0/2/2/2
4	TRP	A	503	-	-	2/7/8/8	0/2/2/2

All (15) bond length outliers are listed below:

Mol	Chain	Res	Type	Atoms	Z	Observed(Å)	Ideal(Å)
2	B	501	HEM	C1B-NB	-4.03	1.33	1.40
2	A	501	HEM	C1B-NB	-3.81	1.33	1.40
2	A	501	HEM	FE-NB	2.70	2.10	1.96
2	A	501	HEM	C4D-ND	-2.68	1.35	1.40
2	B	501	HEM	FE-NB	2.68	2.10	1.96
2	A	501	HEM	CHB-C1B	2.50	1.41	1.35
2	B	501	HEM	C4D-ND	-2.50	1.36	1.40
2	B	501	HEM	C3B-C4B	2.32	1.49	1.44
2	B	501	HEM	CHB-C1B	2.29	1.40	1.35
2	A	501	HEM	C3B-C4B	2.25	1.49	1.44
2	A	501	HEM	C4B-NB	-2.22	1.34	1.38
2	B	501	HEM	C4B-NB	-2.15	1.34	1.38
4	B	503	TRP	OXT-C	-2.09	1.23	1.30
2	B	501	HEM	C1D-C2D	2.06	1.48	1.44
4	A	503	TRP	OXT-C	-2.00	1.24	1.30

All (29) bond angle outliers are listed below:

Mol	Chain	Res	Type	Atoms	Z	Observed(°)	Ideal(°)
2	A	501	HEM	C1B-NB-C4B	5.25	110.49	105.07
2	B	501	HEM	C1B-NB-C4B	5.05	110.29	105.07
2	A	501	HEM	CHC-C4B-NB	3.86	128.62	124.43
2	B	501	HEM	CHC-C4B-NB	3.75	128.51	124.43
2	B	501	HEM	CHD-C1D-ND	3.67	128.42	124.43
2	B	501	HEM	CHA-C4D-ND	3.48	128.68	124.38
2	A	501	HEM	CHD-C1D-ND	3.47	128.20	124.43
2	A	501	HEM	CHA-C4D-ND	3.26	128.41	124.38
2	B	501	HEM	C4B-C3B-C2B	-3.06	104.68	107.11
2	B	501	HEM	CHA-C4D-C3D	-2.98	119.74	125.33
2	A	501	HEM	CHA-C4D-C3D	-2.89	119.91	125.33
5	A	504	ZCW	C2-C1-C6	2.85	121.94	118.17
4	B	503	TRP	OXT-C-O	-2.73	117.89	124.09
2	A	501	HEM	C4B-C3B-C2B	-2.71	104.96	107.11
4	A	503	TRP	OXT-C-O	-2.69	117.98	124.09
2	B	501	HEM	CMD-C2D-C1D	2.60	128.99	125.04
2	A	501	HEM	CHD-C1D-C2D	-2.60	120.92	124.98
5	B	504	ZCW	C2-C1-C6	2.57	121.58	118.17
2	B	501	HEM	CHD-C1D-C2D	-2.56	120.98	124.98
4	A	503	TRP	OXT-C-CA	2.45	121.74	113.38
2	B	501	HEM	CHB-C1B-NB	2.41	127.36	124.38
2	A	501	HEM	CHB-C1B-NB	2.37	127.31	124.38
4	B	503	TRP	OXT-C-CA	2.35	121.39	113.38
2	A	501	HEM	C4B-CHC-C1C	2.21	125.47	122.56

Continued on next page...

Continued from previous page...

Mol	Chain	Res	Type	Atoms	Z	Observed(°)	Ideal(°)
2	B	501	HEM	C4B-CHC-C1C	2.14	125.39	122.56
2	B	501	HEM	CMA-C3A-C4A	-2.07	125.28	128.46
2	A	501	HEM	CMD-C2D-C1D	2.06	128.18	125.04
5	A	504	ZCW	C3-C2-C1	-2.05	118.05	120.89
2	B	501	HEM	O2D-CGD-CBD	2.02	120.53	114.03

There are no chirality outliers.

All (15) torsion outliers are listed below:

Mol	Chain	Res	Type	Atoms
5	A	504	ZCW	O1-C10-C9-C8
5	B	504	ZCW	C1-C8-C9-C10
5	B	504	ZCW	O1-C10-C9-C8
4	A	503	TRP	CA-CB-CG-CD1
4	B	503	TRP	CA-CB-CG-CD1
5	A	504	ZCW	C1-C8-C9-C10
2	B	501	HEM	CAA-CBA-CGA-O1A
2	B	501	HEM	CAA-CBA-CGA-O2A
2	A	501	HEM	CAA-CBA-CGA-O1A
2	A	501	HEM	CAA-CBA-CGA-O2A
4	A	503	TRP	O-C-CA-N
2	A	501	HEM	CAD-CBD-CGD-O2D
2	B	501	HEM	CAD-CBD-CGD-O2D
2	A	501	HEM	CAD-CBD-CGD-O1D
2	B	501	HEM	CAD-CBD-CGD-O1D

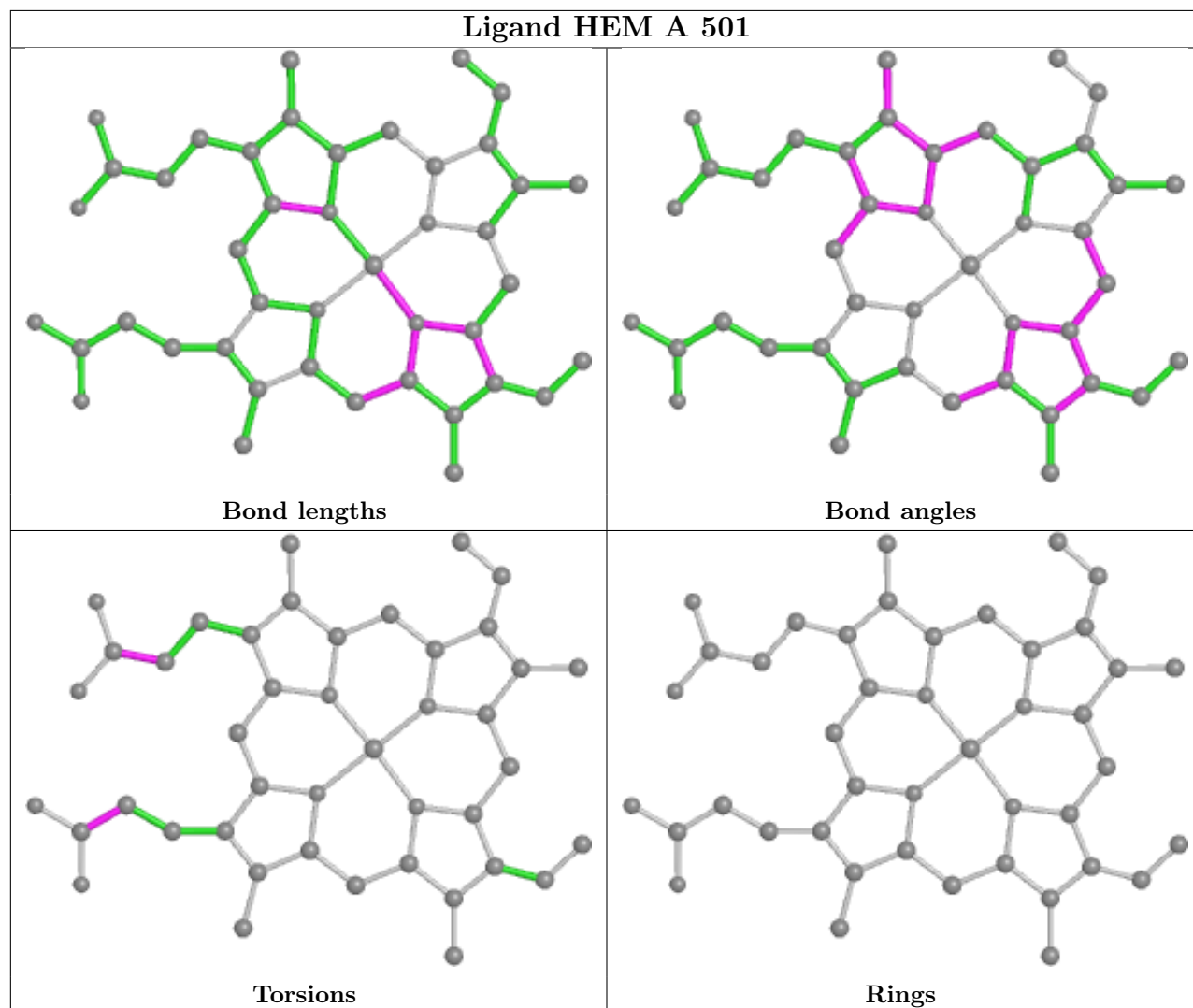
There are no ring outliers.

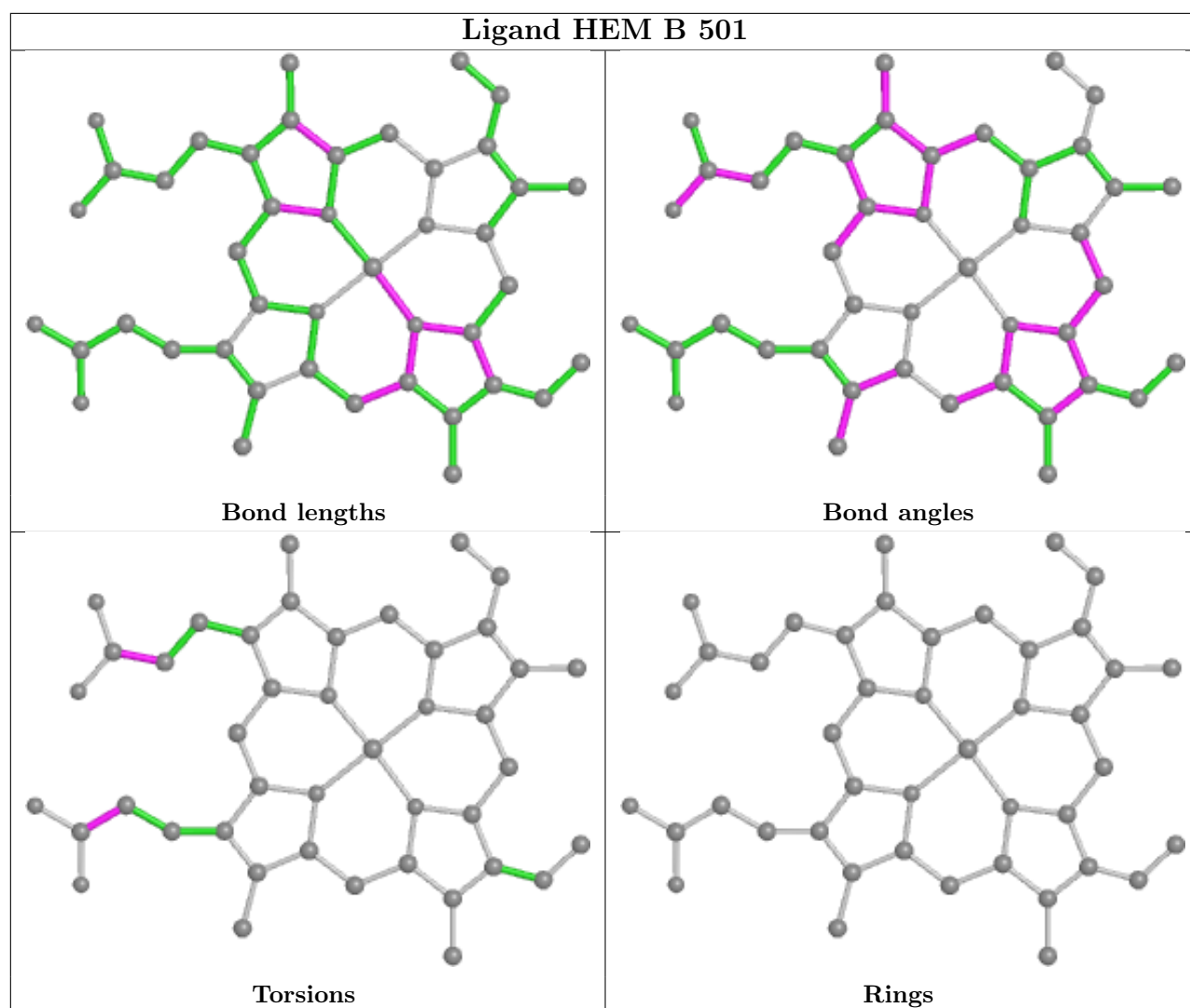
2 monomers are involved in 2 short contacts:

Mol	Chain	Res	Type	Clashes	Symm-Clashes
2	A	501	HEM	1	0
2	B	501	HEM	1	0

The following is a two-dimensional graphical depiction of Mogul quality analysis of bond lengths, bond angles, torsion angles, and ring geometry for all instances of the Ligand of Interest. In addition, ligands with molecular weight > 250 and outliers as shown on the validation Tables will also be included. For torsion angles, if less than 5% of the Mogul distribution of torsion angles is within 10 degrees of the torsion angle in question, then that torsion angle is considered an outlier. Any bond that is central to one or more torsion angles identified as an outlier by Mogul will be highlighted in the graph. For rings, the root-mean-square deviation (RMSD) between the ring in question and similar rings identified by Mogul is calculated over all ring torsion angles. If the average RMSD is greater than 60 degrees and the minimal RMSD between the ring in question and

any Mogul-identified rings is also greater than 60 degrees, then that ring is considered an outlier. The outliers are highlighted in purple. The color gray indicates Mogul did not find sufficient equivalents in the CSD to analyse the geometry.





5.7 Other polymers [i](#)

There are no such residues in this entry.

5.8 Polymer linkage issues [i](#)

There are no chain breaks in this entry.

6 Fit of model and data

6.1 Protein, DNA and RNA chains

In the following table, the column labelled ‘#RSRZ > 2’ contains the number (and percentage) of RSRZ outliers, followed by percent RSRZ outliers for the chain as percentile scores relative to all X-ray entries and entries of similar resolution. The OWAB column contains the minimum, median, 95th percentile and maximum values of the occupancy-weighted average B-factor per residue. The column labelled ‘Q < 0.9’ lists the number of (and percentage) of residues with an average occupancy less than 0.9.

Mol	Chain	Analysed	<RSRZ>	#RSRZ>2	OWAB(Å ²)	Q<0.9
1	A	378/425 (88%)	0.25	28 (7%) 14 10	54, 81, 124, 142	0
1	B	377/425 (88%)	0.05	24 (6%) 19 14	52, 71, 106, 152	0
All	All	755/850 (88%)	0.15	52 (6%) 16 12	52, 74, 121, 152	0

All (52) RSRZ outliers are listed below:

Mol	Chain	Res	Type	RSRZ
1	B	15	TYR	4.8
1	A	142	PRO	4.2
1	B	21	VAL	4.2
1	B	402	GLU	4.1
1	A	85	CYS	4.1
1	B	16	HIS	3.9
1	A	84	GLY	3.9
1	B	84	GLY	3.8
1	A	124	LEU	3.6
1	A	362	PRO	3.5
1	A	129	CYS	3.3
1	B	400	LEU	3.2
1	A	69	HIS	3.2
1	A	125	VAL	3.2
1	A	41	PHE	3.1
1	B	362	PRO	3.1
1	A	23	PHE	3.0
1	A	127	ALA	2.9
1	B	85	CYS	2.9
1	B	264	ALA	2.9
1	A	96	HIS	2.8
1	A	234	LEU	2.8
1	A	51	GLU	2.7
1	A	241	PRO	2.7

Continued on next page...

Continued from previous page...

Mol	Chain	Res	Type	RSRZ
1	A	140	ASN	2.7
1	B	267	SER	2.6
1	B	96	HIS	2.6
1	B	22	GLY	2.6
1	B	88	MET	2.6
1	A	126	TYR	2.6
1	A	71	THR	2.5
1	A	264	ALA	2.5
1	B	129	CYS	2.5
1	B	125	VAL	2.5
1	A	167	HIS	2.5
1	A	130	VAL	2.4
1	B	269	VAL	2.4
1	A	38	ASP	2.4
1	A	263	SER	2.4
1	B	17	ILE	2.3
1	B	126	TYR	2.3
1	B	23	PHE	2.3
1	B	234	LEU	2.2
1	B	130	VAL	2.2
1	B	263	SER	2.1
1	B	224	LYS	2.1
1	A	164	PHE	2.1
1	A	88	MET	2.1
1	A	123	ILE	2.0
1	B	20	GLU	2.0
1	A	267	SER	2.0
1	A	87	THR	2.0

6.2 Non-standard residues in protein, DNA, RNA chains [i](#)

There are no non-standard protein/DNA/RNA residues in this entry.

6.3 Carbohydrates [i](#)

There are no monosaccharides in this entry.

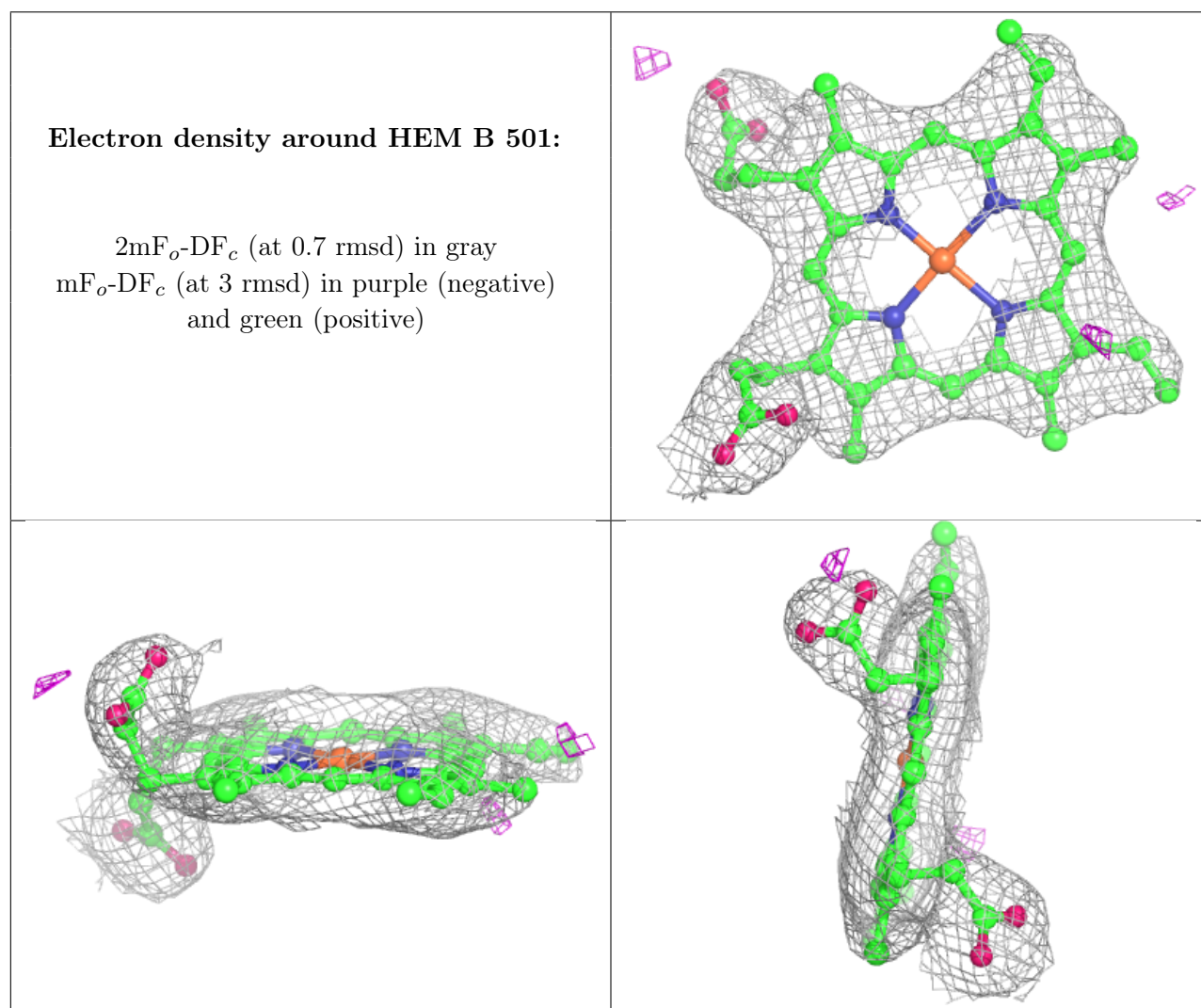
6.4 Ligands [i](#)

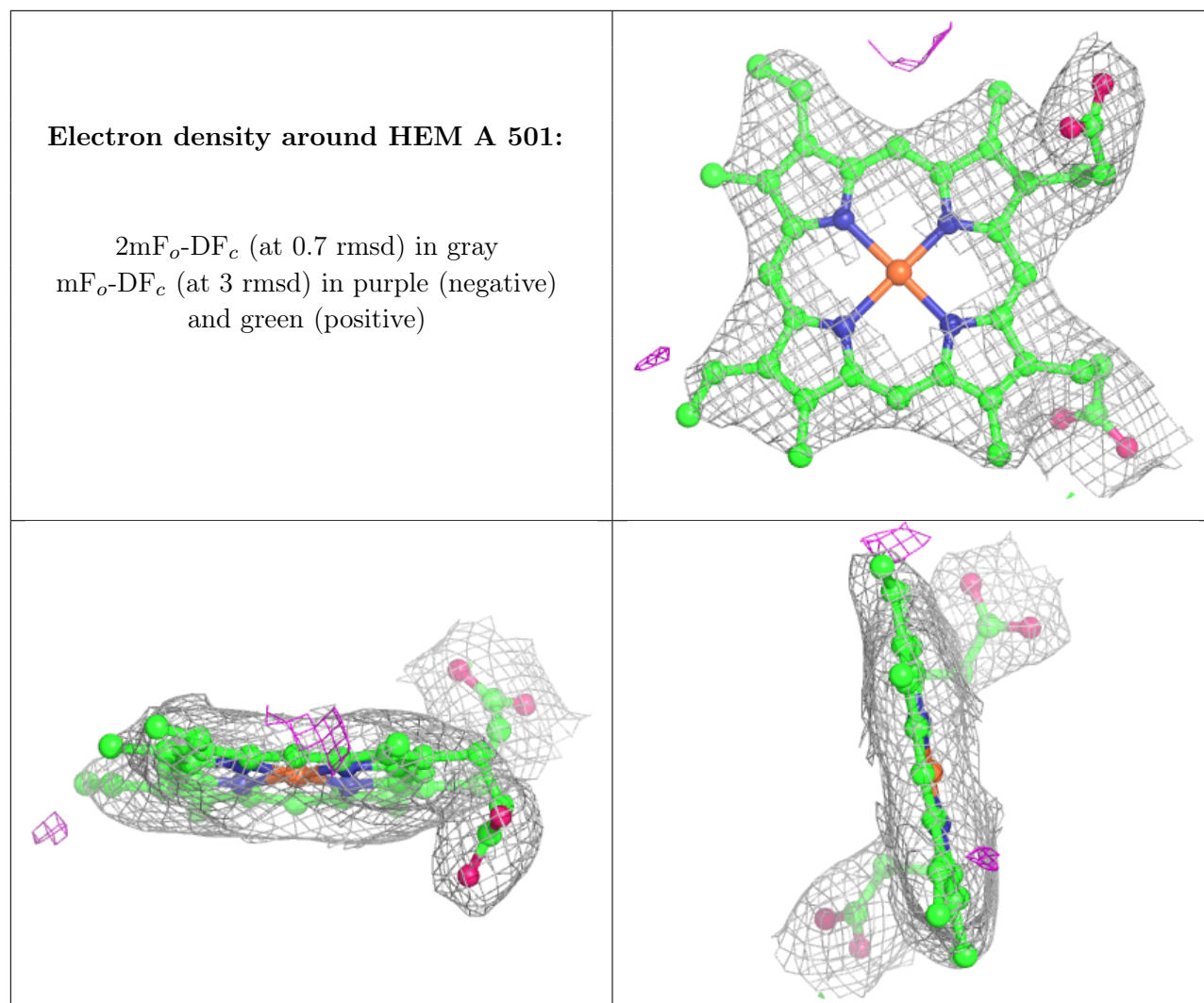
In the following table, the Atoms column lists the number of modelled atoms in the group and the number defined in the chemical component dictionary. The B-factors column lists the minimum,

median, 95th percentile and maximum values of B factors of atoms in the group. The column labelled 'Q< 0.9' lists the number of atoms with occupancy less than 0.9.

Mol	Type	Chain	Res	Atoms	RSCC	RSR	B-factors(Å ²)	Q<0.9
5	ZCW	A	504	12/12	0.93	0.26	75,80,83,83	0
4	TRP	A	503	15/15	0.94	0.35	58,59,66,68	0
5	ZCW	B	504	12/12	0.95	0.25	69,71,77,77	0
4	TRP	B	503	15/15	0.97	0.27	53,55,62,65	0
2	HEM	B	501	43/43	0.98	0.22	56,61,69,72	0
2	HEM	A	501	43/43	0.99	0.19	54,60,63,65	0
3	CYN	B	502	2/2	0.99	0.43	61,61,61,64	0
3	CYN	A	502	2/2	1.00	0.24	59,59,59,63	0

The following is a graphical depiction of the model fit to experimental electron density of all instances of the Ligand of Interest. In addition, ligands with molecular weight > 250 and outliers as shown on the geometry validation Tables will also be included. Each fit is shown from different orientation to approximate a three-dimensional view.





6.5 Other polymers [i](#)

There are no such residues in this entry.