



# Full wwPDB X-ray Structure Validation Report ⓘ

May 23, 2020 – 10:38 am BST

PDB ID : 4CYP  
Title : Leishmania major N-myristoyltransferase in complex with a pyrrolidine inhibitor.  
Authors : Hutton, J.A.; Goncalves, V.; Brannigan, J.A.; Paape, D.; Waugh, T.; Roberts, S.M.; Bell, A.S.; Wilkinson, A.J.; Smith, D.F.; Leatherbarrow, R.J.; Tate, E.W.  
Deposited on : 2014-04-14  
Resolution : 1.55 Å(reported)

This is a Full wwPDB X-ray Structure Validation Report for a publicly released PDB entry.

We welcome your comments at [validation@mail.wwpdb.org](mailto:validation@mail.wwpdb.org)

A user guide is available at

<https://www.wwpdb.org/validation/2017/XrayValidationReportHelp>

with specific help available everywhere you see the ⓘ symbol.

---

The following versions of software and data (see [references ⓘ](#)) were used in the production of this report:

MolProbity : 4.02b-467  
Mogul : 1.8.5 (274361), CSD as541be (2020)  
Xtriage (Phenix) : 1.13  
EDS : 2.11  
buster-report : 1.1.7 (2018)  
Percentile statistics : 20191225.v01 (using entries in the PDB archive December 25th 2019)  
Refmac : 5.8.0158  
CCP4 : 7.0.044 (Gargrove)  
Ideal geometry (proteins) : Engh & Huber (2001)  
Ideal geometry (DNA, RNA) : Parkinson et al. (1996)  
Validation Pipeline (wwPDB-VP) : 2.11

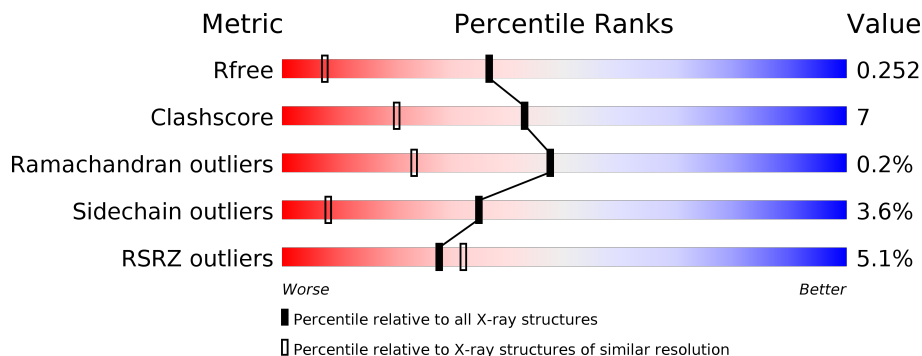
# 1 Overall quality at a glance

The following experimental techniques were used to determine the structure:

*X-RAY DIFFRACTION*

The reported resolution of this entry is 1.55 Å.

Percentile scores (ranging between 0-100) for global validation metrics of the entry are shown in the following graphic. The table shows the number of entries on which the scores are based.



Metric	Whole archive (#Entries)	Similar resolution (#Entries, resolution range(Å))
$R_{free}$	130704	1483 (1.56-1.56)
Clashscore	141614	1529 (1.56-1.56)
Ramachandran outliers	138981	1498 (1.56-1.56)
Sidechain outliers	138945	1495 (1.56-1.56)
RSRZ outliers	127900	1465 (1.56-1.56)

The table below summarises the geometric issues observed across the polymeric chains and their fit to the electron density. The red, orange, yellow and green segments on the lower bar indicate the fraction of residues that contain outliers for  $\geq 3$ , 2, 1 and 0 types of geometric quality criteria respectively. A grey segment represents the fraction of residues that are not modelled. The numeric value for each fraction is indicated below the corresponding segment, with a dot representing fractions  $\leq 5\%$ . The upper red bar (where present) indicates the fraction of residues that have poor fit to the electron density. The numeric value is given above the bar.

Mol	Chain	Length	Quality of chain
1	A	411	

## 2 Entry composition [i](#)

There are 5 unique types of molecules in this entry. The entry contains 4035 atoms, of which 0 are hydrogens and 0 are deuteriums.

In the tables below, the ZeroOcc column contains the number of atoms modelled with zero occupancy, the AltConf column contains the number of residues with at least one atom in alternate conformation and the Trace column contains the number of residues modelled with at most 2 atoms.

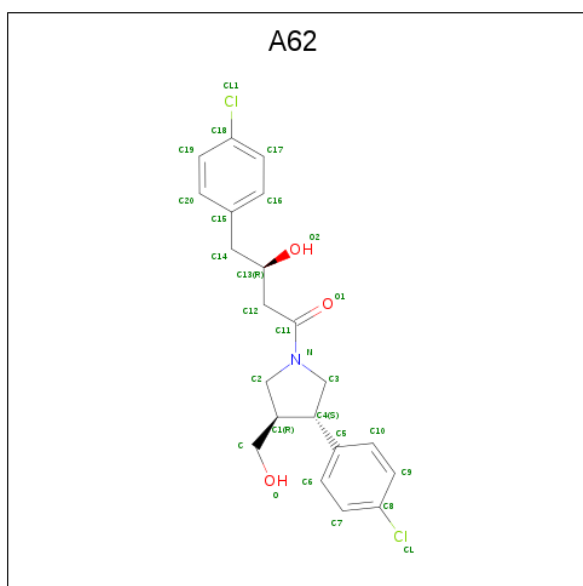
- Molecule 1 is a protein called GLYCYLPEPTIDE N-TETRADECANOYLTRANSFERASE.

Mol	Chain	Residues	Atoms					ZeroOcc	AltConf	Trace
			Total	C	N	O	S			
1	A	411	3561	2312	591	642	16	0	37	0

- Molecule 2 is MAGNESIUM ION (three-letter code: MG) (formula: Mg).

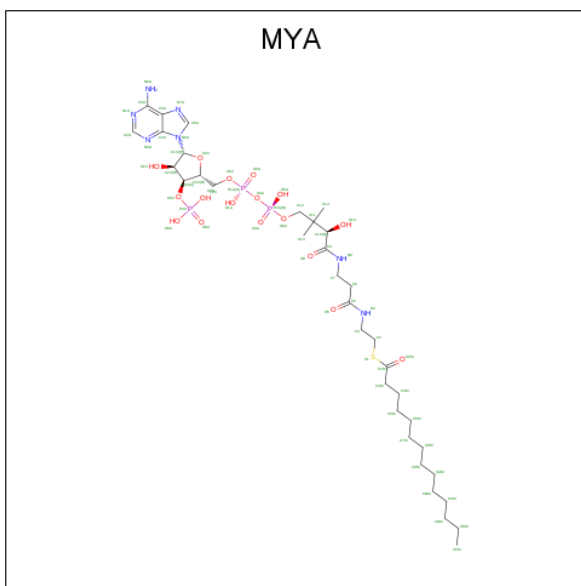
Mol	Chain	Residues	Atoms		ZeroOcc	AltConf
			Total	Mg		
2	A	1	1	1	0	0

- Molecule 3 is (3R)-4-(4-chlorophenyl)-1-[(3S,4R)-3-(4-chlorophenyl)-4-(hydroxymethyl)pyrrolidin-1-yl]-3-hydroxybutan-1-one (three-letter code: A62) (formula: C<sub>21</sub>H<sub>23</sub>Cl<sub>2</sub>NO<sub>3</sub>).



Mol	Chain	Residues	Atoms					ZeroOcc	AltConf
			Total	C	Cl	N	O		
3	A	1	27	21	2	1	3	0	0

- Molecule 4 is TETRADECANOYL-COA (three-letter code: MYA) (formula:  $C_{35}H_{62}N_7O_{17}P_3S$ ).



Mol	Chain	Residues	Atoms					ZeroOcc	AltConf	
			Total	C	N	O	P			S
4	A	1	63	35	7	17	3	1	0	0

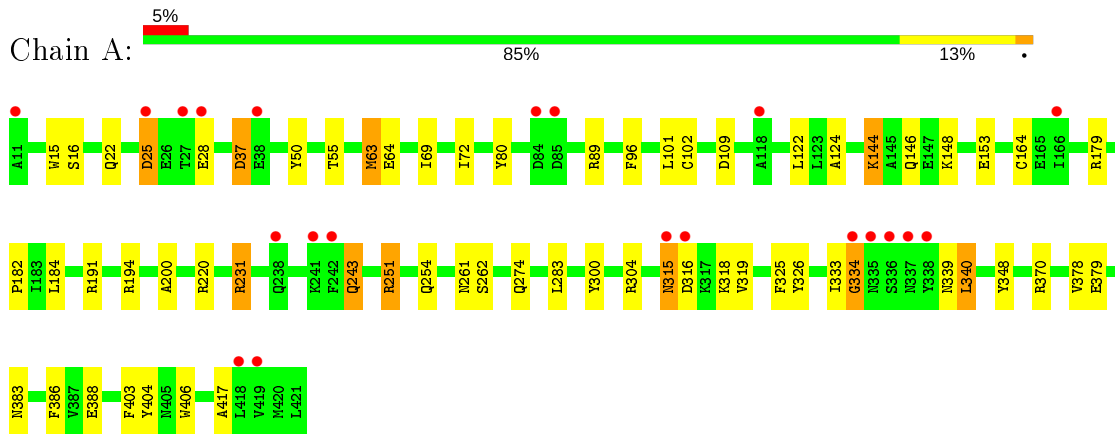
- Molecule 5 is water.

Mol	Chain	Residues	Atoms		ZeroOcc	AltConf
			Total	O		
5	A	383	383	383	0	0

### 3 Residue-property plots [i](#)

These plots are drawn for all protein, RNA and DNA chains in the entry. The first graphic for a chain summarises the proportions of the various outlier classes displayed in the second graphic. The second graphic shows the sequence view annotated by issues in geometry and electron density. Residues are color-coded according to the number of geometric quality criteria for which they contain at least one outlier: green = 0, yellow = 1, orange = 2 and red = 3 or more. A red dot above a residue indicates a poor fit to the electron density ( $RSRZ > 2$ ). Stretches of 2 or more consecutive residues without any outlier are shown as a green connector. Residues present in the sample, but not in the model, are shown in grey.

- Molecule 1: GLYCYLPEPTIDE N-TETRADECANOYLTRANSFERASE



## 4 Data and refinement statistics

Property	Value	Source
Space group	P 1 21 1	Depositor
Cell constants a, b, c, $\alpha$ , $\beta$ , $\gamma$	48.26Å 92.49Å 53.72Å 90.00° 112.93° 90.00°	Depositor
Resolution (Å)	49.47 – 1.55 26.43 – 1.55	Depositor EDS
% Data completeness (in resolution range)	98.6 (49.47-1.55) 98.6 (26.43-1.55)	Depositor EDS
$R_{merge}$	0.04	Depositor
$R_{sym}$	(Not available)	Depositor
$\langle I/\sigma(I) \rangle$ <sup>1</sup>	1.75 (at 1.55Å)	Xtrriage
Refinement program	REFMAC 5.8.0049	Depositor
R, $R_{free}$	0.205 , 0.252 0.205 , 0.252	Depositor DCC
$R_{free}$ test set	3069 reflections (4.95%)	wwPDB-VP
Wilson B-factor (Å <sup>2</sup> )	22.4	Xtrriage
Anisotropy	0.184	Xtrriage
Bulk solvent $k_{sol}$ (e/Å <sup>3</sup> ), $B_{sol}$ (Å <sup>2</sup> )	0.32 , 35.8	EDS
L-test for twinning <sup>2</sup>	$\langle  L  \rangle = 0.48$ , $\langle L^2 \rangle = 0.31$	Xtrriage
Estimated twinning fraction	No twinning to report.	Xtrriage
$F_o, F_c$ correlation	0.97	EDS
Total number of atoms	4035	wwPDB-VP
Average B, all atoms (Å <sup>2</sup> )	24.0	wwPDB-VP

Xtrriage's analysis on translational NCS is as follows: *The largest off-origin peak in the Patterson function is 5.81% of the height of the origin peak. No significant pseudotranslation is detected.*

<sup>1</sup>Intensities estimated from amplitudes.

<sup>2</sup>Theoretical values of  $\langle |L| \rangle$ ,  $\langle L^2 \rangle$  for acentric reflections are 0.5, 0.333 respectively for untwinned datasets, and 0.375, 0.2 for perfectly twinned datasets.

## 5 Model quality [i](#)

### 5.1 Standard geometry [i](#)

Bond lengths and bond angles in the following residue types are not validated in this section: MYA, MG, A62

The Z score for a bond length (or angle) is the number of standard deviations the observed value is removed from the expected value. A bond length (or angle) with  $|Z| > 5$  is considered an outlier worth inspection. RMSZ is the root-mean-square of all Z scores of the bond lengths (or angles).

Mol	Chain	Bond lengths		Bond angles	
		RMSZ	# Z  >5	RMSZ	# Z  >5
1	A	1.22	13/3757 (0.3%)	1.14	15/5100 (0.3%)

Chiral center outliers are detected by calculating the chiral volume of a chiral center and verifying if the center is modelled as a planar moiety or with the opposite hand. A planarity outlier is detected by checking planarity of atoms in a peptide group, atoms in a mainchain group or atoms of a sidechain that are expected to be planar.

Mol	Chain	#Chirality outliers	#Planarity outliers
1	A	0	2

All (13) bond length outliers are listed below:

Mol	Chain	Res	Type	Atoms	Z	Observed(Å)	Ideal(Å)
1	A	348	TYR	CG-CD1	6.68	1.47	1.39
1	A	334	GLY	N-CA	6.60	1.55	1.46
1	A	300	TYR	CE1-CZ	6.54	1.47	1.38
1	A	406	TRP	CE3-CZ3	5.81	1.48	1.38
1	A	50	TYR	CE1-CZ	5.80	1.46	1.38
1	A	15	TRP	CE3-CZ3	5.80	1.48	1.38
1	A	80	TYR	CE1-CZ	5.80	1.46	1.38
1	A	96	PHE	CE1-CZ	5.63	1.48	1.37
1	A	325	PHE	CG-CD1	5.62	1.47	1.38
1	A	348	TYR	CE2-CZ	5.42	1.45	1.38
1	A	403	PHE	CG-CD1	5.36	1.46	1.38
1	A	80	TYR	CG-CD1	5.21	1.46	1.39
1	A	404	TYR	CG-CD1	5.04	1.45	1.39

All (15) bond angle outliers are listed below:

Mol	Chain	Res	Type	Atoms	Z	Observed(°)	Ideal(°)
1	A	220	ARG	NE-CZ-NH1	9.41	125.01	120.30
1	A	191	ARG	NE-CZ-NH2	-8.04	116.28	120.30
1	A	370	ARG	NE-CZ-NH2	-7.67	116.46	120.30
1	A	64[A]	GLU	CB-CA-C	7.10	124.60	110.40
1	A	64[B]	GLU	CB-CA-C	7.10	124.60	110.40
1	A	89	ARG	NE-CZ-NH2	-6.71	116.94	120.30
1	A	304	ARG	NE-CZ-NH2	-6.46	117.07	120.30
1	A	220	ARG	NE-CZ-NH2	-6.18	117.21	120.30
1	A	370	ARG	NE-CZ-NH1	6.17	123.39	120.30
1	A	304	ARG	NE-CZ-NH1	5.92	123.26	120.30
1	A	334	GLY	N-CA-C	5.84	127.69	113.10
1	A	326	TYR	CD1-CE1-CZ	-5.68	114.69	119.80
1	A	340	LEU	CB-CG-CD2	-5.42	101.78	111.00
1	A	194	ARG	NE-CZ-NH2	-5.37	117.61	120.30
1	A	326	TYR	CB-CG-CD2	-5.07	117.96	121.00

There are no chirality outliers.

All (2) planarity outliers are listed below:

Mol	Chain	Res	Type	Group
1	A	261	ASN	Peptide
1	A	333	ILE	Peptide

## 5.2 Too-close contacts [i](#)

In the following table, the Non-H and H(model) columns list the number of non-hydrogen atoms and hydrogen atoms in the chain respectively. The H(added) column lists the number of hydrogen atoms added and optimized by MolProbity. The Clashes column lists the number of clashes within the asymmetric unit, whereas Symm-Clashes lists symmetry related clashes.

Mol	Chain	Non-H	H(model)	H(added)	Clashes	Symm-Clashes
1	A	3561	0	3584	50	0
2	A	1	0	0	0	0
3	A	27	0	23	0	0
4	A	63	0	58	0	0
5	A	383	0	0	9	0
All	All	4035	0	3665	50	0

The all-atom clashscore is defined as the number of clashes found per 1000 atoms (including hydrogen atoms). The all-atom clashscore for this structure is 7.

All (50) close contacts within the same asymmetric unit are listed below, sorted by their clash magnitude.



Atom-1	Atom-2	Interatomic distance (Å)	Clash overlap (Å)
1:A:148[B]:LYS:HB3	1:A:148[B]:LYS:HZ3	1.15	1.05
1:A:148[B]:LYS:HB3	1:A:148[B]:LYS:NZ	1.63	1.02
1:A:72[A]:ILE:HD13	1:A:122:LEU:CD2	1.91	1.00
1:A:72[A]:ILE:HD13	1:A:122:LEU:HD22	1.44	0.98
1:A:146[A]:GLN:OE1	5:A:2187:HOH:O	1.82	0.97
1:A:16:SER:HA	1:A:22[A]:GLN:NE2	1.85	0.90
1:A:148[B]:LYS:CB	1:A:148[B]:LYS:NZ	2.39	0.86
1:A:262[B]:SER:HB3	5:A:2289:HOH:O	1.77	0.83
1:A:16:SER:HA	1:A:22[A]:GLN:HE22	1.39	0.83
1:A:72[A]:ILE:CD1	1:A:122:LEU:HD21	2.12	0.80
1:A:251:ARG:HG2	1:A:251:ARG:HH11	1.49	0.78
1:A:72[A]:ILE:CD1	1:A:122:LEU:CD2	2.64	0.76
1:A:243[B]:GLN:NE2	1:A:243[B]:GLN:HA	2.01	0.75
1:A:231[C]:ARG:HH11	1:A:231[C]:ARG:HG3	1.53	0.74
1:A:72[A]:ILE:HD13	1:A:122:LEU:HD21	1.72	0.69
1:A:16:SER:HA	1:A:22[B]:GLN:HE22	1.59	0.67
1:A:72[A]:ILE:HD12	1:A:122:LEU:HD21	1.78	0.66
1:A:63[B]:MET:HB3	1:A:102:CYS:SG	2.36	0.65
1:A:254[B]:GLN:HG2	5:A:2116:HOH:O	1.97	0.65
1:A:243[B]:GLN:HE21	1:A:243[B]:GLN:HA	1.61	0.62
1:A:388:GLU:CD	1:A:388:GLU:H	2.05	0.60
1:A:243[B]:GLN:CG	5:A:2267:HOH:O	2.50	0.59
1:A:22[A]:GLN:HG2	5:A:2019:HOH:O	2.01	0.59
1:A:243[B]:GLN:NE2	1:A:243[B]:GLN:CA	2.65	0.58
1:A:274:GLN:NE2	1:A:319:VAL:H	2.06	0.54
1:A:243[B]:GLN:HG3	5:A:2267:HOH:O	2.07	0.54
1:A:124:ALA:HB1	1:A:184:LEU:HD11	1.90	0.54
1:A:251:ARG:HG2	1:A:251:ARG:NH1	2.20	0.54
1:A:148[B]:LYS:CB	1:A:148[B]:LYS:HZ2	2.19	0.53
1:A:231[C]:ARG:HG3	1:A:231[C]:ARG:NH1	2.24	0.50
1:A:315:ASN:O	1:A:316:ASP:CB	2.60	0.49
1:A:63[B]:MET:CB	1:A:102:CYS:SG	3.03	0.46
1:A:179:ARG:O	1:A:182:PRO:HD2	2.15	0.46
1:A:274:GLN:HE22	1:A:318:LYS:HA	1.79	0.45
1:A:378:VAL:HG12	1:A:379:GLU:N	2.31	0.45
1:A:101[A]:LEU:HD23	1:A:101[A]:LEU:HA	1.66	0.45
1:A:315:ASN:O	1:A:316:ASP:HB3	2.19	0.43
1:A:262[B]:SER:CB	5:A:2289:HOH:O	2.51	0.43
1:A:388:GLU:CD	1:A:388:GLU:N	2.69	0.43
1:A:243[B]:GLN:HE21	1:A:243[B]:GLN:CA	2.26	0.42
1:A:22[A]:GLN:NE2	5:A:2020:HOH:O	2.52	0.41
1:A:101[A]:LEU:HD23	5:A:2136:HOH:O	2.20	0.41

*Continued on next page...*

Continued from previous page...

Atom-1	Atom-2	Interatomic distance (Å)	Clash overlap (Å)
1:A:179:ARG:C	1:A:182:PRO:HD2	2.41	0.41
1:A:25[A]:ASP:HA	1:A:28:GLU:HB2	2.02	0.41
1:A:383:ASN:HA	1:A:386:PHE:CE2	2.55	0.41
1:A:144[A]:LYS:HA	1:A:144[A]:LYS:HD2	1.89	0.41
1:A:283:LEU:HD22	1:A:417:ALA:HB1	2.02	0.40
1:A:164:CYS:O	1:A:200:ALA:HA	2.21	0.40

There are no symmetry-related clashes.

## 5.3 Torsion angles [i](#)

### 5.3.1 Protein backbone [i](#)

In the following table, the Percentiles column shows the percent Ramachandran outliers of the chain as a percentile score with respect to all X-ray entries followed by that with respect to entries of similar resolution.

The Analysed column shows the number of residues for which the backbone conformation was analysed, and the total number of residues.

Mol	Chain	Analysed	Favoured	Allowed	Outliers	Percentiles
1	A	446/411 (108%)	428 (96%)	17 (4%)	1 (0%)	47 23

All (1) Ramachandran outliers are listed below:

Mol	Chain	Res	Type
1	A	334	GLY

### 5.3.2 Protein sidechains [i](#)

In the following table, the Percentiles column shows the percent sidechain outliers of the chain as a percentile score with respect to all X-ray entries followed by that with respect to entries of similar resolution.

The Analysed column shows the number of residues for which the sidechain conformation was analysed, and the total number of residues.

Mol	Chain	Analysed	Rotameric	Outliers	Percentiles
1	A	398/362 (110%)	377 (95%)	21 (5%)	22 3

All (21) residues with a non-rotameric sidechain are listed below:

Mol	Chain	Res	Type
1	A	25[A]	ASP
1	A	25[B]	ASP
1	A	37[A]	ASP
1	A	37[B]	ASP
1	A	55	THR
1	A	63[A]	MET
1	A	63[B]	MET
1	A	109[A]	ASP
1	A	109[B]	ASP
1	A	144[A]	LYS
1	A	144[B]	LYS
1	A	153	GLU
1	A	231[A]	ARG
1	A	231[C]	ARG
1	A	243[A]	GLN
1	A	243[B]	GLN
1	A	251	ARG
1	A	315	ASN
1	A	339[A]	ASN
1	A	339[B]	ASN
1	A	340	LEU

Some sidechains can be flipped to improve hydrogen bonding and reduce clashes. All (5) such sidechains are listed below:

Mol	Chain	Res	Type
1	A	18	GLN
1	A	261	ASN
1	A	274	GLN
1	A	315	ASN
1	A	337	ASN

### 5.3.3 RNA [i](#)

There are no RNA molecules in this entry.

## 5.4 Non-standard residues in protein, DNA, RNA chains [i](#)

There are no non-standard protein/DNA/RNA residues in this entry.

## 5.5 Carbohydrates [i](#)

There are no carbohydrates in this entry.

## 5.6 Ligand geometry [i](#)

Of 3 ligands modelled in this entry, 1 is monoatomic - leaving 2 for Mogul analysis.

In the following table, the Counts columns list the number of bonds (or angles) for which Mogul statistics could be retrieved, the number of bonds (or angles) that are observed in the model and the number of bonds (or angles) that are defined in the Chemical Component Dictionary. The Link column lists molecule types, if any, to which the group is linked. The Z score for a bond length (or angle) is the number of standard deviations the observed value is removed from the expected value. A bond length (or angle) with  $|Z| > 2$  is considered an outlier worth inspection. RMSZ is the root-mean-square of all Z scores of the bond lengths (or angles).

Mol	Type	Chain	Res	Link	Bond lengths			Bond angles		
					Counts	RMSZ	# Z  > 2	Counts	RMSZ	# Z  > 2
4	MYA	A	1001	2	54,65,65	1.15	4 (7%)	67,91,91	1.73	14 (20%)
3	A62	A	1000	-	29,29,29	1.42	3 (10%)	34,40,40	2.53	11 (32%)

In the following table, the Chirals column lists the number of chiral outliers, the number of chiral centers analysed, the number of these observed in the model and the number defined in the Chemical Component Dictionary. Similar counts are reported in the Torsion and Rings columns. '-' means no outliers of that kind were identified.

Mol	Type	Chain	Res	Link	Chirals	Torsions	Rings
4	MYA	A	1001	2	-	2/59/80/80	0/3/3/3
3	A62	A	1000	-	-	3/18/30/30	0/3/3/3

All (7) bond length outliers are listed below:

Mol	Chain	Res	Type	Atoms	Z	Observed(Å)	Ideal(Å)
4	A	1001	MYA	C2A-N3A	3.50	1.37	1.32
3	A	1000	A62	C8-CL	3.41	1.81	1.74
4	A	1001	MYA	C2-S1	3.15	1.85	1.81
3	A	1000	A62	C18-CL1	2.57	1.80	1.74
4	A	1001	MYA	O4X-C1X	-2.41	1.37	1.41
4	A	1001	MYA	C3X-C4X	-2.37	1.46	1.52
3	A	1000	A62	C10-C5	2.04	1.42	1.39

All (25) bond angle outliers are listed below:

Mol	Chain	Res	Type	Atoms	Z	Observed(°)	Ideal(°)
4	A	1001	MYA	O2M-C2M-C3M	6.68	120.91	109.02
3	A	1000	A62	C10-C9-C8	-6.34	112.55	119.24
3	A	1000	A62	C9-C8-CL	-5.38	110.95	119.35
3	A	1000	A62	C7-C6-C5	-5.23	115.93	121.20
3	A	1000	A62	C9-C8-C7	4.89	127.57	121.24
3	A	1000	A62	O2-C13-C14	-4.41	100.33	109.48
4	A	1001	MYA	C13-C11-C10	4.01	115.77	108.82
4	A	1001	MYA	O2X-C2X-C3X	3.66	121.56	111.17
3	A	1000	A62	C3-C4-C5	-3.43	110.45	115.02
4	A	1001	MYA	O8A-P3X-O9A	3.24	123.36	110.68
3	A	1000	A62	C10-C5-C6	3.23	122.32	118.29
3	A	1000	A62	C20-C15-C16	3.18	123.16	118.17
4	A	1001	MYA	C14-C11-C12	3.15	113.38	108.23
3	A	1000	A62	C17-C16-C15	-3.05	116.83	121.03
4	A	1001	MYA	N3A-C2A-N1A	-2.98	124.02	128.68
4	A	1001	MYA	O6A-C12-C11	2.72	114.92	110.55
3	A	1000	A62	C20-C19-C18	-2.62	116.48	119.24
4	A	1001	MYA	O8A-P3X-O7A	2.45	116.99	107.64
4	A	1001	MYA	C1X-N9A-C4A	-2.41	122.41	126.64
4	A	1001	MYA	C14-C11-C13	-2.40	104.27	109.17
4	A	1001	MYA	C2-C3-N4	-2.30	107.59	112.42
4	A	1001	MYA	C4M-C3M-C2M	-2.28	107.50	113.80
4	A	1001	MYA	C3-C2-S1	-2.28	105.03	114.36
3	A	1000	A62	C10-C5-C4	-2.09	117.11	121.08
4	A	1001	MYA	O4X-C1X-C2X	-2.01	103.99	106.93

There are no chirality outliers.

All (5) torsion outliers are listed below:

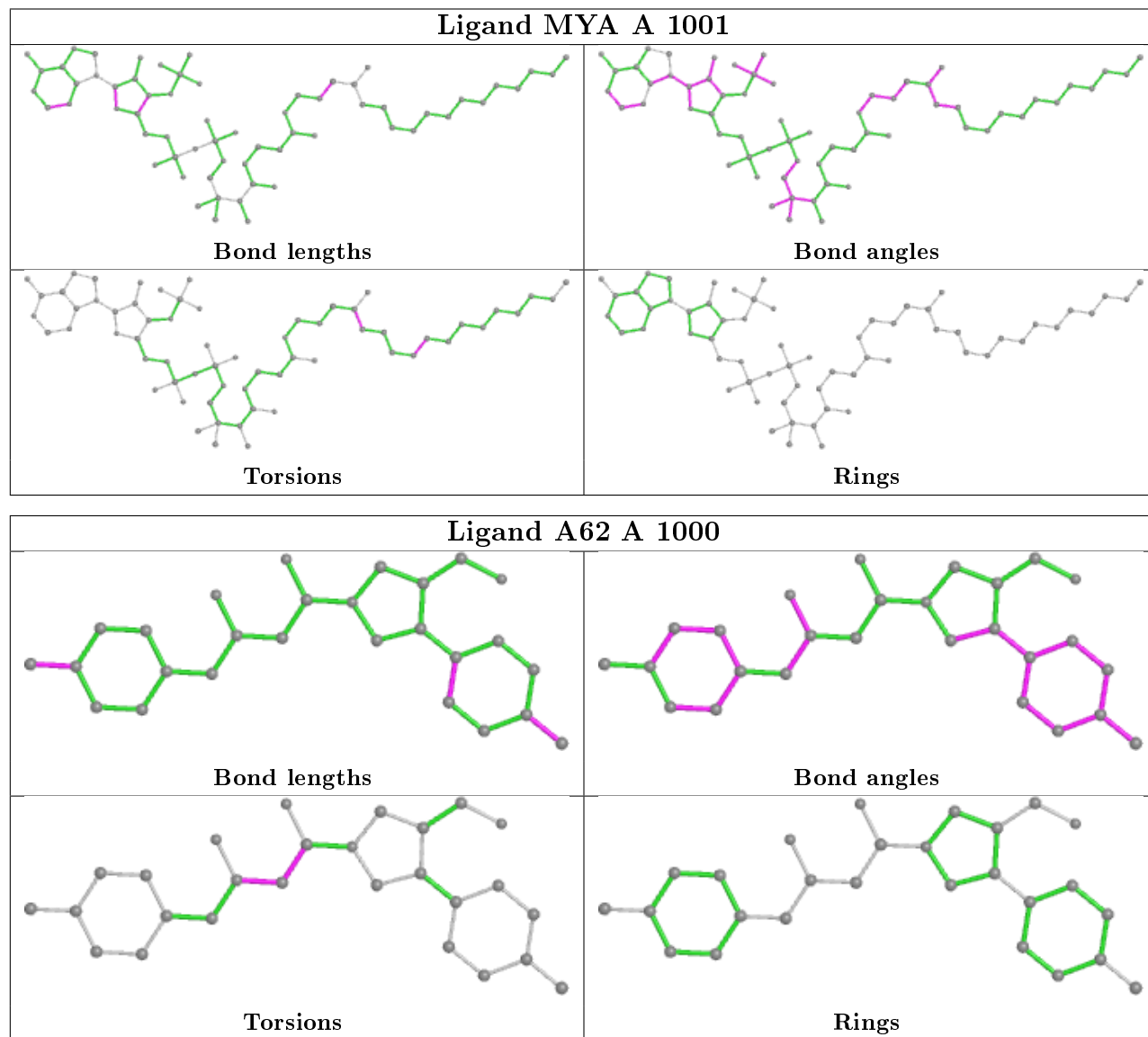
Mol	Chain	Res	Type	Atoms
4	A	1001	MYA	S1-C2M-C3M-C4M
3	A	1000	A62	C11-C12-C13-C14
3	A	1000	A62	N-C11-C12-C13
4	A	1001	MYA	C5M-C6M-C7M-C8M
3	A	1000	A62	O1-C11-C12-C13

There are no ring outliers.

No monomer is involved in short contacts.

The following is a two-dimensional graphical depiction of Mogul quality analysis of bond lengths, bond angles, torsion angles, and ring geometry for all instances of the Ligand of Interest. In addition, ligands with molecular weight > 250 and outliers as shown on the validation Tables will also be included. For torsion angles, if less than 5% of the Mogul distribution of torsion angles is

within 10 degrees of the torsion angle in question, then that torsion angle is considered an outlier. Any bond that is central to one or more torsion angles identified as an outlier by Mogul will be highlighted in the graph. For rings, the root-mean-square deviation (RMSD) between the ring in question and similar rings identified by Mogul is calculated over all ring torsion angles. If the average RMSD is greater than 60 degrees and the minimal RMSD between the ring in question and any Mogul-identified rings is also greater than 60 degrees, then that ring is considered an outlier. The outliers are highlighted in purple. The color gray indicates Mogul did not find sufficient equivalents in the CSD to analyse the geometry.



## 5.7 Other polymers [\(i\)](#)

There are no such residues in this entry.

## 5.8 Polymer linkage issues

There are no chain breaks in this entry.

## 6 Fit of model and data [i](#)

### 6.1 Protein, DNA and RNA chains [i](#)

In the following table, the column labelled '#RSRZ> 2' contains the number (and percentage) of RSRZ outliers, followed by percent RSRZ outliers for the chain as percentile scores relative to all X-ray entries and entries of similar resolution. The OWAB column contains the minimum, median, 95<sup>th</sup> percentile and maximum values of the occupancy-weighted average B-factor per residue. The column labelled 'Q< 0.9' lists the number of (and percentage) of residues with an average occupancy less than 0.9.

Mol	Chain	Analysed	<RSRZ>	#RSRZ>2	OWAB(Å <sup>2</sup> )	Q<0.9
1	A	411/411 (100%)	0.34	21 (5%) 28 32	12, 21, 43, 70	1 (0%)

All (21) RSRZ outliers are listed below:

Mol	Chain	Res	Type	RSRZ
1	A	337	ASN	4.9
1	A	336	SER	4.2
1	A	338	TYR	4.1
1	A	25[A]	ASP	3.6
1	A	316	ASP	3.5
1	A	38	GLU	3.3
1	A	11	ALA	3.1
1	A	335	ASN	3.1
1	A	418	LEU	2.9
1	A	85	ASP	2.8
1	A	166	ILE	2.6
1	A	238	GLN	2.6
1	A	242	PHE	2.4
1	A	241	LYS	2.3
1	A	84	ASP	2.2
1	A	334	GLY	2.2
1	A	28	GLU	2.2
1	A	315	ASN	2.1
1	A	118	ALA	2.1
1	A	27	THR	2.1
1	A	419	VAL	2.0

### 6.2 Non-standard residues in protein, DNA, RNA chains [i](#)

There are no non-standard protein/DNA/RNA residues in this entry.



### 6.3 Carbohydrates

There are no carbohydrates in this entry.

### 6.4 Ligands

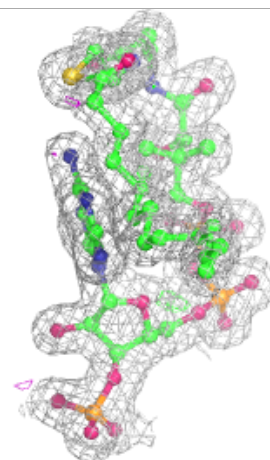
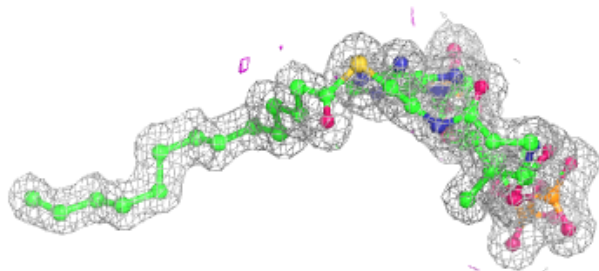
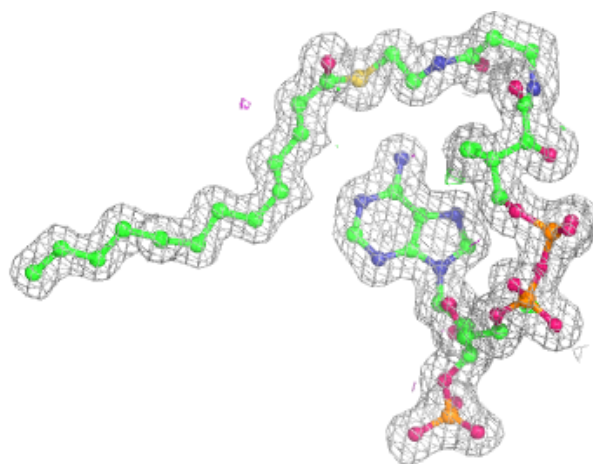
In the following table, the Atoms column lists the number of modelled atoms in the group and the number defined in the chemical component dictionary. The B-factors column lists the minimum, median, 95<sup>th</sup> percentile and maximum values of B factors of atoms in the group. The column labelled 'Q< 0.9' lists the number of atoms with occupancy less than 0.9.

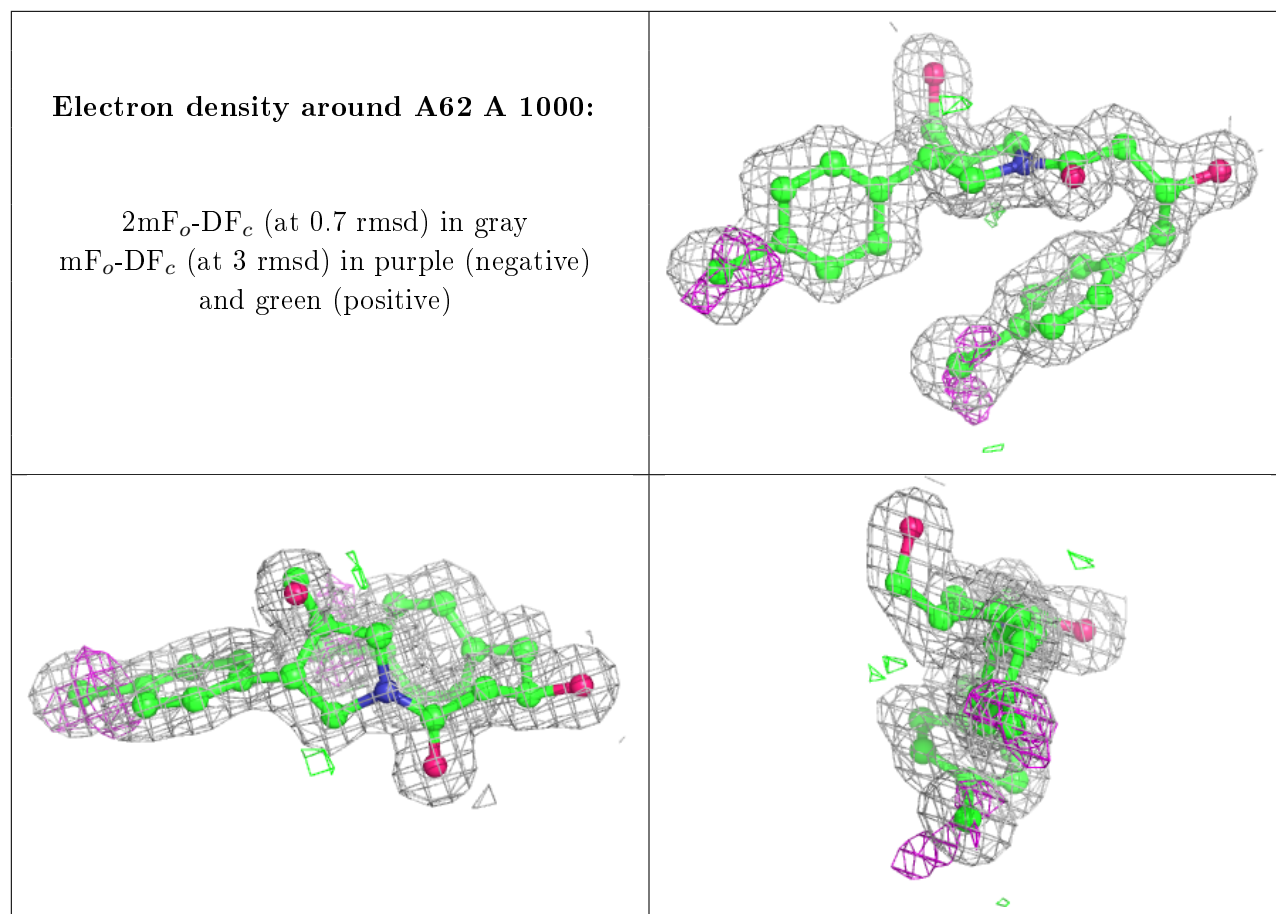
Mol	Type	Chain	Res	Atoms	RSCC	RSR	B-factors( $\text{\AA}^2$ )	Q<0.9
4	MYA	A	1001	63/63	0.95	0.09	13,17,22,23	0
3	A62	A	1000	27/27	0.95	0.08	16,19,23,31	0
2	MG	A	999	1/1	0.97	0.05	28,28,28,28	0

The following is a graphical depiction of the model fit to experimental electron density of all instances of the Ligand of Interest. In addition, ligands with molecular weight > 250 and outliers as shown on the geometry validation Tables will also be included. Each fit is shown from different orientation to approximate a three-dimensional view.

**Electron density around MYA A 1001:**

$2mF_o-DF_c$  (at 0.7 rmsd) in gray  
 $mF_o-DF_c$  (at 3 rmsd) in purple (negative)  
and green (positive)





## 6.5 Other polymers [i](#)

There are no such residues in this entry.