



Full wwPDB X-ray Structure Validation Report ⓘ

Oct 14, 2021 – 04:13 PM EDT

PDB ID : 3CZR
Title : Crystal Structure of Human 11-beta-Hydroxysteroid Dehydrogenase (HSD1)
in Complex with Arylsulfonylpiperazine Inhibitor
Authors : Wang, Z.; Sudom, A.; Walker, N.P.
Deposited on : 2008-04-29
Resolution : 2.35 Å (reported)

This is a Full wwPDB X-ray Structure Validation Report for a publicly released PDB entry.

We welcome your comments at validation@mail.wwpdb.org

A user guide is available at

<https://www.wwpdb.org/validation/2017/XrayValidationReportHelp>

with specific help available everywhere you see the ⓘ symbol.

The following versions of software and data (see [references ⓘ](#)) were used in the production of this report:

MolProbity : 4.02b-467
Mogul : 1.8.5 (274361), CSD as541be (2020)
Xtriage (Phenix) : 1.13
EDS : 2.23.2
buster-report : 1.1.7 (2018)
Percentile statistics : 20191225.v01 (using entries in the PDB archive December 25th 2019)
Refmac : 5.8.0158
CCP4 : 7.0.044 (Gargrove)
Ideal geometry (proteins) : Engh & Huber (2001)
Ideal geometry (DNA, RNA) : Parkinson et al. (1996)
Validation Pipeline (wwPDB-VP) : 2.23.2

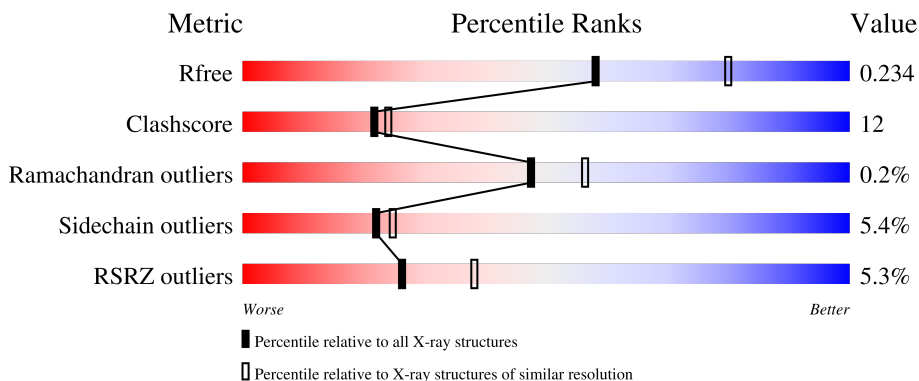
1 Overall quality at a glance

The following experimental techniques were used to determine the structure:

X-RAY DIFFRACTION

The reported resolution of this entry is 2.35 Å.

Percentile scores (ranging between 0-100) for global validation metrics of the entry are shown in the following graphic. The table shows the number of entries on which the scores are based.



Metric	Whole archive (#Entries)	Similar resolution (#Entries, resolution range(Å))
R_{free}	130704	1164 (2.36-2.36)
Clashscore	141614	1232 (2.36-2.36)
Ramachandran outliers	138981	1211 (2.36-2.36)
Sidechain outliers	138945	1212 (2.36-2.36)
RSRZ outliers	127900	1150 (2.36-2.36)

The table below summarises the geometric issues observed across the polymeric chains and their fit to the electron density. The red, orange, yellow and green segments of the lower bar indicate the fraction of residues that contain outliers for ≥ 3 , 2, 1 and 0 types of geometric quality criteria respectively. A grey segment represents the fraction of residues that are not modelled. The numeric value for each fraction is indicated below the corresponding segment, with a dot representing fractions $\leq 5\%$. The upper red bar (where present) indicates the fraction of residues that have poor fit to the electron density. The numeric value is given above the bar.

Mol	Chain	Length	Quality of chain
1	A	286	 2% 70% 21% • 7%
1	B	286	 8% 71% 18% • 8%

2 Entry composition [i](#)

There are 5 unique types of molecules in this entry. The entry contains 4390 atoms, of which 0 are hydrogens and 0 are deuteriums.

In the tables below, the ZeroOcc column contains the number of atoms modelled with zero occupancy, the AltConf column contains the number of residues with at least one atom in alternate conformation and the Trace column contains the number of residues modelled with at most 2 atoms.

- Molecule 1 is a protein called Corticosteroid 11-beta-dehydrogenase isozyme 1.

Mol	Chain	Residues	Atoms					ZeroOcc	AltConf	Trace
			Total	C	N	O	S			
1	A	265	2054	1308	348	383	15	0	4	0
1	B	263	2023	1292	341	375	15	0	1	0

There are 36 discrepancies between the modelled and reference sequences:

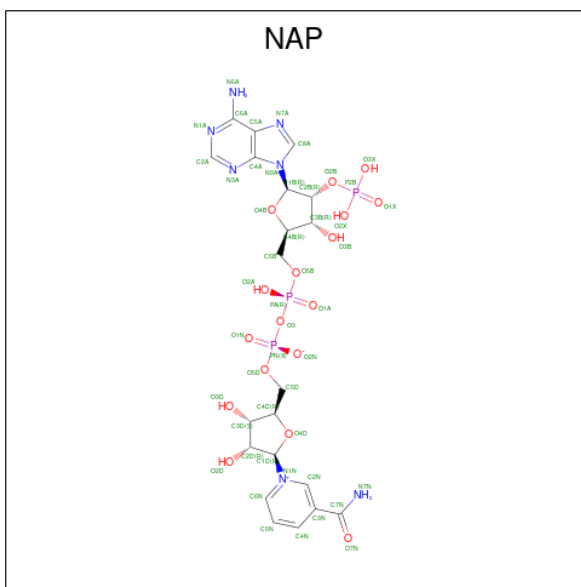
Chain	Residue	Modelled	Actual	Comment	Reference
A	7	MET	-	expression tag	UNP P28845
A	8	LYS	-	expression tag	UNP P28845
A	9	HIS	-	expression tag	UNP P28845
A	10	GLN	-	expression tag	UNP P28845
A	11	HIS	-	expression tag	UNP P28845
A	12	GLN	-	expression tag	UNP P28845
A	13	HIS	-	expression tag	UNP P28845
A	14	GLN	-	expression tag	UNP P28845
A	15	HIS	-	expression tag	UNP P28845
A	16	GLN	-	expression tag	UNP P28845
A	17	HIS	-	expression tag	UNP P28845
A	18	GLN	-	expression tag	UNP P28845
A	19	HIS	-	expression tag	UNP P28845
A	20	GLN	-	expression tag	UNP P28845
A	21	GLN	-	expression tag	UNP P28845
A	22	PRO	-	expression tag	UNP P28845
A	23	LEU	-	expression tag	UNP P28845
A	272	SER	CYS	engineered mutation	UNP P28845
B	7	MET	-	expression tag	UNP P28845
B	8	LYS	-	expression tag	UNP P28845
B	9	HIS	-	expression tag	UNP P28845
B	10	GLN	-	expression tag	UNP P28845
B	11	HIS	-	expression tag	UNP P28845
B	12	GLN	-	expression tag	UNP P28845
B	13	HIS	-	expression tag	UNP P28845

Continued on next page...

Continued from previous page...

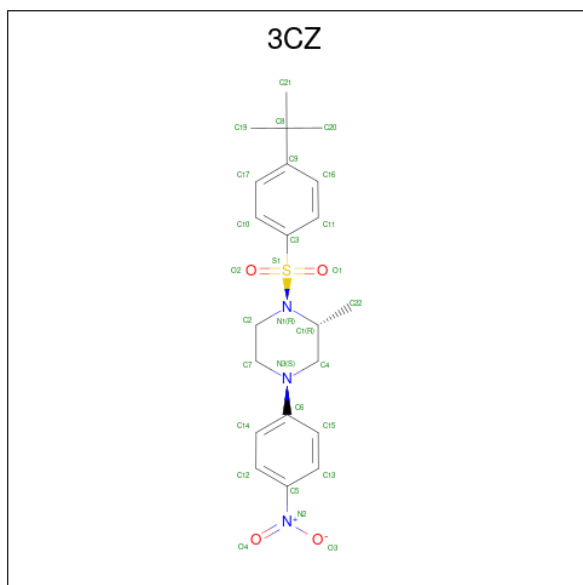
Chain	Residue	Modelled	Actual	Comment	Reference
B	14	GLN	-	expression tag	UNP P28845
B	15	HIS	-	expression tag	UNP P28845
B	16	GLN	-	expression tag	UNP P28845
B	17	HIS	-	expression tag	UNP P28845
B	18	GLN	-	expression tag	UNP P28845
B	19	HIS	-	expression tag	UNP P28845
B	20	GLN	-	expression tag	UNP P28845
B	21	GLN	-	expression tag	UNP P28845
B	22	PRO	-	expression tag	UNP P28845
B	23	LEU	-	expression tag	UNP P28845
B	272	SER	CYS	engineered mutation	UNP P28845

- Molecule 2 is NADP NICOTINAMIDE-ADENINE-DINUCLEOTIDE PHOSPHATE (three-letter code: NAP) (formula: C₂₁H₂₈N₇O₁₇P₃).



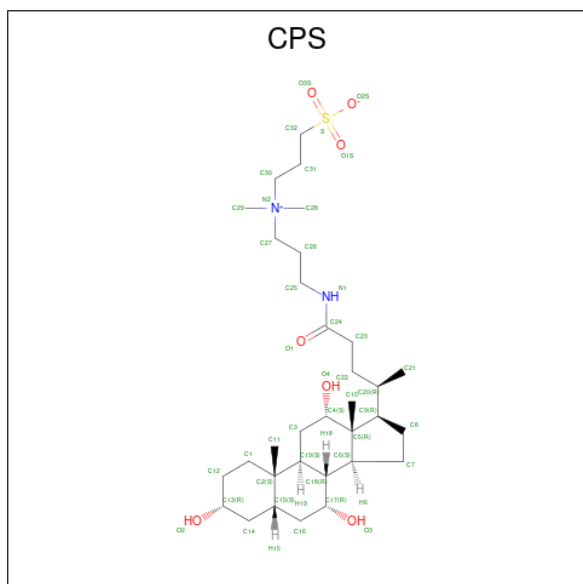
Mol	Chain	Residues	Atoms				ZeroOcc	AltConf	
			Total	C	N	O			P
2	A	1	48	21	7	17	3	0	0
2	B	1	48	21	7	17	3	0	0

- Molecule 3 is (2R)-1-[(4-tert-butylphenyl)sulfonyl]-2-methyl-4-(4-nitrophenyl)piperazine (three-letter code: 3CZ) (formula: C₂₁H₂₇N₃O₄S).



Mol	Chain	Residues	Atoms					ZeroOcc	AltConf
			Total	C	N	O	S		
3	A	1	29	21	3	4	1	0	0

- Molecule 4 is 3-[(3-CHOLAMIDOPROPYL)DIMETHYLAMMONIO]-1-PROPANESULFONATE (three-letter code: CPS) (formula: $C_{32}H_{58}N_2O_7S$).



Mol	Chain	Residues	Atoms					ZeroOcc	AltConf
			Total	C	N	O	S		
4	B	1	42	32	2	7	1	0	0

- Molecule 5 is water.

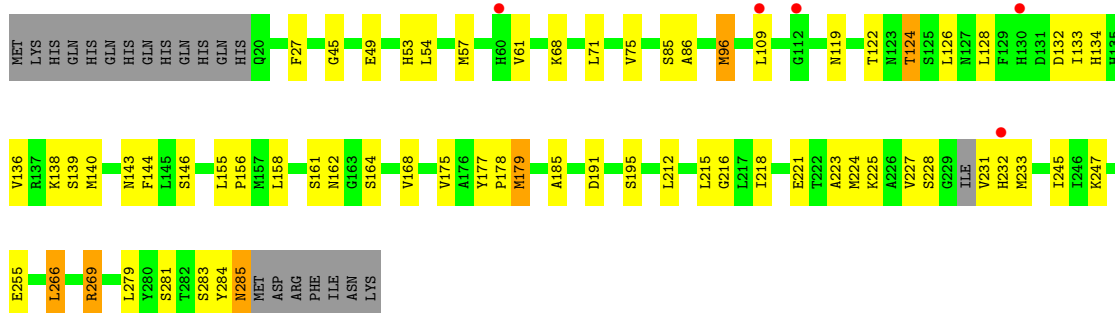
Mol	Chain	Residues	Atoms		ZeroOcc	AltConf
5	A	81	Total 81	O 81	0	0
5	B	65	Total 65	O 65	0	0

3 Residue-property plots [i](#)


These plots are drawn for all protein, RNA, DNA and oligosaccharide chains in the entry. The first graphic for a chain summarises the proportions of the various outlier classes displayed in the second graphic. The second graphic shows the sequence view annotated by issues in geometry and electron density. Residues are color-coded according to the number of geometric quality criteria for which they contain at least one outlier: green = 0, yellow = 1, orange = 2 and red = 3 or more. A red dot above a residue indicates a poor fit to the electron density ($RSRZ > 2$). Stretches of 2 or more consecutive residues without any outlier are shown as a green connector. Residues present in the sample, but not in the model, are shown in grey.

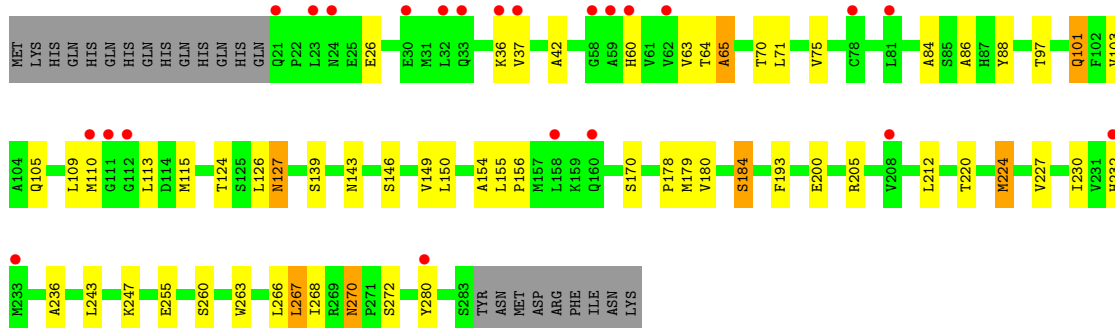
- Molecule 1: Corticosteroid 11-beta-dehydrogenase isozyme 1

Chain A: 



- Molecule 1: Corticosteroid 11-beta-dehydrogenase isozyme 1

Chain B: 



4 Data and refinement statistics i

Property	Value	Source
Space group	P 31 2 1	Depositor
Cell constants a, b, c, α , β , γ	110.22Å 110.22Å 132.99Å 90.00° 90.00° 120.00°	Depositor
Resolution (Å)	50.00 – 2.35 54.56 – 2.20	Depositor EDS
% Data completeness (in resolution range)	99.8 (50.00-2.35) 99.8 (54.56-2.20)	Depositor EDS
R_{merge}	0.06	Depositor
R_{sym}	(Not available)	Depositor
$\langle I/\sigma(I) \rangle$ ¹	1.96 (at 2.20Å)	Xtrriage
Refinement program	REFMAC 5.4.0069	Depositor
R, R_{free}	0.219 , 0.247 0.215 , 0.234	Depositor DCC
R_{free} test set	2423 reflections (5.07%)	wwPDB-VP
Wilson B-factor (Å ²)	53.8	Xtrriage
Anisotropy	0.066	Xtrriage
Bulk solvent k_{sol} (e/Å ³), B_{sol} (Å ²)	0.34 , 54.1	EDS
L-test for twinning ²	$\langle L \rangle = 0.50$, $\langle L^2 \rangle = 0.34$	Xtrriage
Estimated twinning fraction	0.025 for -h,-k,l	Xtrriage
F_o, F_c correlation	0.96	EDS
Total number of atoms	4390	wwPDB-VP
Average B, all atoms (Å ²)	61.0	wwPDB-VP

Xtrriage's analysis on translational NCS is as follows: *The largest off-origin peak in the Patterson function is 4.23% of the height of the origin peak. No significant pseudotranslation is detected.*

¹Intensities estimated from amplitudes.

²Theoretical values of $\langle |L| \rangle$, $\langle L^2 \rangle$ for acentric reflections are 0.5, 0.333 respectively for untwinned datasets, and 0.375, 0.2 for perfectly twinned datasets.

5 Model quality

5.1 Standard geometry

Bond lengths and bond angles in the following residue types are not validated in this section: NAP, CPS, 3CZ

The Z score for a bond length (or angle) is the number of standard deviations the observed value is removed from the expected value. A bond length (or angle) with $|Z| > 5$ is considered an outlier worth inspection. RMSZ is the root-mean-square of all Z scores of the bond lengths (or angles).

Mol	Chain	Bond lengths		Bond angles	
		RMSZ	# Z >5	RMSZ	# Z >5
1	A	0.60	0/2103	0.68	0/2839
1	B	0.56	0/2061	0.66	0/2784
All	All	0.58	0/4164	0.67	0/5623

There are no bond length outliers.

There are no bond angle outliers.

There are no chirality outliers.

There are no planarity outliers.

5.2 Too-close contacts

In the following table, the Non-H and H(model) columns list the number of non-hydrogen atoms and hydrogen atoms in the chain respectively. The H(added) column lists the number of hydrogen atoms added and optimized by MolProbity. The Clashes column lists the number of clashes within the asymmetric unit, whereas Symm-Clashes lists symmetry-related clashes.

Mol	Chain	Non-H	H(model)	H(added)	Clashes	Symm-Clashes
1	A	2054	0	2094	46	0
1	B	2023	0	2072	57	0
2	A	48	0	25	0	0
2	B	48	0	25	0	0
3	A	29	0	27	1	0
4	B	42	0	58	3	0
5	A	81	0	0	1	0
5	B	65	0	0	2	0
All	All	4390	0	4301	102	0

The all-atom clashscore is defined as the number of clashes found per 1000 atoms (including hydrogen atoms). The all-atom clashscore for this structure is 12.

All (102) close contacts within the same asymmetric unit are listed below, sorted by their clash magnitude.

Atom-1	Atom-2	Interatomic distance (Å)	Clash overlap (Å)
1:B:230:ILE:HG13	1:B:232:HIS:NE2	1.63	1.13
1:A:231:VAL:CG1	1:A:232:HIS:N	2.15	1.08
1:A:231:VAL:HG13	1:A:232:HIS:H	1.21	1.03
1:A:231:VAL:CG1	1:A:232:HIS:H	1.72	1.02
1:B:230:ILE:CD1	1:B:232:HIS:CE1	2.45	0.99
1:A:96:MET:HE1	1:A:146:SER:HA	1.45	0.97
1:A:231:VAL:HG12	1:A:232:HIS:N	1.76	0.96
1:B:224:MET:CE	1:B:224:MET:HA	2.00	0.91
1:B:155:LEU:HB3	1:B:156:PRO:HD3	1.54	0.88
1:B:224:MET:HA	1:B:224:MET:HE3	1.53	0.88
1:B:230:ILE:HD12	1:B:232:HIS:CE1	2.10	0.87
1:B:263:TRP:O	1:B:267:LEU:HD12	1.75	0.86
1:B:75:VAL:HG21	1:B:88:TYR:HB3	1.60	0.82
1:B:230:ILE:CD1	1:B:232:HIS:HE1	1.91	0.81
1:A:284:TYR:HE2	1:B:232:HIS:HD1	1.30	0.80
1:B:178:PRO:O	1:B:179:MET:HB2	1.81	0.80
1:A:96:MET:HA	1:A:96:MET:HE2	1.63	0.80
1:A:122:THR:O	1:A:124:THR:HG22	1.82	0.79
1:B:103:VAL:HG11	1:B:154:ALA:HB2	1.65	0.77
1:A:96:MET:HA	1:A:96:MET:CE	2.15	0.76
1:A:279:LEU:O	1:A:283:SER:HB2	1.86	0.76
1:B:230:ILE:CG1	1:B:232:HIS:NE2	2.46	0.75
1:A:284:TYR:HE2	1:B:232:HIS:ND1	1.87	0.72
1:B:230:ILE:HD11	1:B:232:HIS:CE1	2.25	0.71
1:A:191:ASP:O	1:A:195:SER:HB2	1.94	0.67
1:B:230:ILE:HD11	1:B:232:HIS:HE1	1.58	0.67
1:B:101:GLN:HA	1:B:101:GLN:HE21	1.60	0.67
1:B:200:GLU:OE1	5:B:411:HOH:O	2.14	0.66
1:B:155:LEU:HB3	1:B:156:PRO:CD	2.26	0.64
1:A:231:VAL:HG13	1:A:232:HIS:N	1.95	0.64
1:A:216:GLY:O	1:A:218:ILE:HG12	1.98	0.63
1:B:97:THR:O	1:B:101:GLN:HG2	2.03	0.59
1:A:175:VAL:HG23	1:A:177:TYR:CE1	2.38	0.58
1:B:230:ILE:CG1	1:B:232:HIS:CE1	2.87	0.57
1:B:224:MET:HE3	1:B:227:VAL:CG2	2.35	0.57
1:A:134[B]:HIS:NE2	1:A:138:LYS:NZ	2.53	0.56
1:B:224:MET:CE	1:B:224:MET:CA	2.78	0.56
1:B:224:MET:CE	1:B:227:VAL:CG2	2.85	0.55
1:B:230:ILE:HG13	1:B:232:HIS:CE1	2.38	0.55
1:A:215:LEU:HD11	1:A:245:ILE:HD11	1.89	0.55

Continued on next page...

Continued from previous page...

Atom-1	Atom-2	Interatomic distance (Å)	Clash overlap (Å)
1:B:60:HIS:CD2	1:B:84:ALA:HB3	2.41	0.55
1:A:139:SER:O	1:A:143:ASN:HB2	2.07	0.54
1:B:36:LYS:O	1:B:113:LEU:HD12	2.07	0.54
1:B:178:PRO:O	1:B:179:MET:CB	2.49	0.54
1:B:224:MET:HA	1:B:224:MET:HE2	1.84	0.54
1:A:155:LEU:HB3	1:A:156:PRO:HD3	1.89	0.54
1:B:42:ALA:HB3	1:B:63:VAL:HB	1.89	0.54
1:B:139:SER:O	1:B:143:ASN:HB2	2.08	0.53
1:B:105:GLN:O	1:B:109:LEU:HD13	2.08	0.53
1:B:127:ASN:ND2	5:B:386:HOH:O	2.42	0.52
1:A:221:GLU:O	1:A:225:LYS:HD3	2.09	0.52
1:A:212:LEU:O	1:A:255:GLU:HA	2.10	0.52
1:B:75:VAL:CG2	1:B:88:TYR:HB3	2.36	0.51
1:A:119:ASN:HD22	1:A:168:VAL:HG21	1.75	0.51
1:B:36:LYS:HG2	1:B:110:MET:HB3	1.92	0.51
1:B:146:SER:O	1:B:150:LEU:HD12	2.10	0.51
1:A:223:ALA:O	1:A:227:VAL:HG22	2.11	0.51
1:A:54:LEU:HA	1:A:57:MET:HE3	1.93	0.50
1:A:178:PRO:O	1:A:179:MET:HB2	2.12	0.50
1:A:27:PHE:CD2	1:A:247:LYS:HD3	2.47	0.49
1:A:133:ILE:HD13	1:B:149:VAL:HG22	1.94	0.49
1:B:75:VAL:HG13	1:B:86:ALA:HB1	1.94	0.49
1:A:191:ASP:O	1:A:195:SER:CB	2.60	0.48
1:A:227:VAL:O	1:A:228:SER:C	2.52	0.48
4:B:1:CPS:H262	4:B:1:CPS:H30A	1.41	0.48
1:B:37:VAL:HG13	1:B:115:MET:HB3	1.95	0.47
1:B:63:VAL:HG23	1:B:71:LEU:HD22	1.97	0.47
1:A:71:LEU:O	1:A:75:VAL:HG23	2.15	0.47
1:A:161:SER:O	1:A:162:ASN:HB2	2.14	0.46
1:B:103:VAL:HG11	1:B:154:ALA:CB	2.41	0.46
1:B:243:LEU:HG	1:B:247:LYS:HE3	1.97	0.46
1:A:140:MET:HE3	1:A:144:PHE:HB3	1.98	0.46
1:B:220:THR:O	1:B:224:MET:HG2	2.17	0.45
1:A:266:LEU:O	1:A:269:ARG:HG2	2.16	0.45
1:A:45:GLY:O	1:A:49:GLU:HG2	2.17	0.44
1:B:103:VAL:CG1	1:B:154:ALA:HB2	2.42	0.44
1:B:64:THR:O	1:B:65:ALA:HB2	2.17	0.44
1:B:236:ALA:HB2	1:B:260:SER:HB3	2.00	0.44
1:B:205:ARG:NH1	1:B:205:ARG:HG3	2.33	0.44
1:A:284:TYR:O	1:A:285:ASN:HB3	2.17	0.44
1:A:126:LEU:HD11	1:A:227:VAL:HG12	1.99	0.43

Continued on next page...

Continued from previous page...

Atom-1	Atom-2	Interatomic distance (Å)	Clash overlap (Å)
1:B:71:LEU:O	1:B:75:VAL:HG23	2.18	0.43
1:A:158:LEU:HD22	1:A:164:SER:H	1.82	0.43
1:A:128:LEU:HD23	1:B:200:GLU:HB3	2.00	0.43
1:B:270:ASN:HD21	1:B:272:SER:HB2	1.82	0.43
1:A:54:LEU:HA	1:A:57:MET:CE	2.49	0.42
1:B:212:LEU:O	1:B:255:GLU:HA	2.19	0.42
1:B:180:VAL:O	1:B:184:SER:HB2	2.19	0.42
1:A:53:HIS:O	1:A:57:MET:HG3	2.19	0.42
3:A:293:3CZ:H15	3:A:293:3CZ:H7A	1.87	0.42
1:A:49:GLU:HB3	5:A:347:HOH:O	2.19	0.42
1:A:185:ALA:HB2	1:B:193:PHE:HB2	2.02	0.42
1:B:205:ARG:HG3	1:B:205:ARG:HH11	1.84	0.42
1:A:224:MET:HA	1:A:224:MET:CE	2.50	0.41
1:A:133:ILE:H	1:A:133:ILE:HG13	1.64	0.41
1:B:224:MET:HE3	1:B:224:MET:CA	2.36	0.41
1:A:61:VAL:O	1:A:86:ALA:HA	2.21	0.41
1:A:132:ASP:O	1:A:136:VAL:HG23	2.20	0.41
4:B:1:CPS:O2S	4:B:1:CPS:C30	2.69	0.40
4:B:1:CPS:O2S	4:B:1:CPS:H30	2.18	0.40
1:B:101:GLN:HA	1:B:101:GLN:NE2	2.33	0.40

There are no symmetry-related clashes.

5.3 Torsion angles [i](#)

5.3.1 Protein backbone [i](#)

In the following table, the Percentiles column shows the percent Ramachandran outliers of the chain as a percentile score with respect to all X-ray entries followed by that with respect to entries of similar resolution.

The Analysed column shows the number of residues for which the backbone conformation was analysed, and the total number of residues.

Mol	Chain	Analysed	Favoured	Allowed	Outliers	Percentiles
1	A	265/286 (93%)	247 (93%)	18 (7%)	0	100 100
1	B	262/286 (92%)	244 (93%)	17 (6%)	1 (0%)	34 38
All	All	527/572 (92%)	491 (93%)	35 (7%)	1 (0%)	47 56

All (1) Ramachandran outliers are listed below:

Mol	Chain	Res	Type
1	B	65	ALA

5.3.2 Protein sidechains [i](#)

In the following table, the Percentiles column shows the percent sidechain outliers of the chain as a percentile score with respect to all X-ray entries followed by that with respect to entries of similar resolution.

The Analysed column shows the number of residues for which the sidechain conformation was analysed, and the total number of residues.

Mol	Chain	Analysed	Rotameric	Outliers	Percentiles	
1	A	226/243 (93%)	215 (95%)	11 (5%)	25	29
1	B	221/243 (91%)	208 (94%)	13 (6%)	19	22
All	All	447/486 (92%)	423 (95%)	24 (5%)	22	25

All (24) residues with a non-rotameric sidechain are listed below:

Mol	Chain	Res	Type
1	A	68	LYS
1	A	85	SER
1	A	96	MET
1	A	109	LEU
1	A	124	THR
1	A	179	MET
1	A	233	MET
1	A	266	LEU
1	A	269	ARG
1	A	281	SER
1	A	285	ASN
1	B	26	GLU
1	B	70	THR
1	B	101	GLN
1	B	124	THR
1	B	126	LEU
1	B	127	ASN
1	B	170	SER
1	B	184	SER
1	B	224	MET
1	B	266	LEU
1	B	267	LEU
1	B	268	ILE

Continued on next page...

Continued from previous page...

Mol	Chain	Res	Type
1	B	270	ASN

Sometimes sidechains can be flipped to improve hydrogen bonding and reduce clashes. All (8) such sidechains are listed below:

Mol	Chain	Res	Type
1	A	105	GLN
1	A	119	ASN
1	A	127	ASN
1	A	162	ASN
1	A	285	ASN
1	B	87	HIS
1	B	101	GLN
1	B	270	ASN

5.3.3 RNA [i](#)

There are no RNA molecules in this entry.

5.4 Non-standard residues in protein, DNA, RNA chains [i](#)

There are no non-standard protein/DNA/RNA residues in this entry.

5.5 Carbohydrates [i](#)

There are no monosaccharides in this entry.

5.6 Ligand geometry [i](#)

4 ligands are modelled in this entry.

In the following table, the Counts columns list the number of bonds (or angles) for which Mogul statistics could be retrieved, the number of bonds (or angles) that are observed in the model and the number of bonds (or angles) that are defined in the Chemical Component Dictionary. The Link column lists molecule types, if any, to which the group is linked. The Z score for a bond length (or angle) is the number of standard deviations the observed value is removed from the expected value. A bond length (or angle) with $|Z| > 2$ is considered an outlier worth inspection. RMSZ is the root-mean-square of all Z scores of the bond lengths (or angles).

Mol	Type	Chain	Res	Link	Bond lengths			Bond angles		
					Counts	RMSZ	# Z > 2	Counts	RMSZ	# Z > 2
2	NAP	B	2	-	45,52,52	1.67	4 (8%)	56,80,80	1.54	7 (12%)
3	3CZ	A	293	-	29,31,31	1.30	3 (10%)	44,47,47	1.19	5 (11%)
2	NAP	A	1	-	45,52,52	1.71	5 (11%)	56,80,80	1.45	6 (10%)
4	CPS	B	1	-	45,45,45	1.43	2 (4%)	69,70,70	1.28	5 (7%)

In the following table, the Chirals column lists the number of chiral outliers, the number of chiral centers analysed, the number of these observed in the model and the number defined in the Chemical Component Dictionary. Similar counts are reported in the Torsion and Rings columns. '-' means no outliers of that kind were identified.

Mol	Type	Chain	Res	Link	Chirals	Torsions	Rings
2	NAP	B	2	-	-	3/31/67/67	0/5/5/5
3	3CZ	A	293	-	-	0/24/39/39	0/3/3/3
2	NAP	A	1	-	-	6/31/67/67	0/5/5/5
4	CPS	B	1	-	-	15/25/90/90	0/4/4/4

All (14) bond length outliers are listed below:

Mol	Chain	Res	Type	Atoms	Z	Observed(Å)	Ideal(Å)
2	A	1	NAP	O7N-C7N	8.45	1.40	1.24
2	B	2	NAP	O7N-C7N	8.39	1.40	1.24
4	B	1	CPS	C32-S	-7.80	1.66	1.77
2	A	1	NAP	C2A-N3A	3.83	1.38	1.32
3	A	293	3CZ	O2-S1	3.57	1.47	1.43
3	A	293	3CZ	C3-S1	3.15	1.80	1.76
2	B	2	NAP	C2A-N3A	2.85	1.36	1.32
2	A	1	NAP	C2A-N1A	2.73	1.39	1.33
2	B	2	NAP	C2N-N1N	2.66	1.38	1.35
3	A	293	3CZ	O1-S1	2.66	1.46	1.43
2	B	2	NAP	C2A-N1A	2.66	1.38	1.33
2	A	1	NAP	C2N-N1N	2.50	1.38	1.35
2	A	1	NAP	P2B-O2B	2.17	1.63	1.59
4	B	1	CPS	C30-N2	-2.10	1.47	1.52

All (23) bond angle outliers are listed below:

Mol	Chain	Res	Type	Atoms	Z	Observed(°)	Ideal(°)
2	B	2	NAP	N3A-C2A-N1A	-6.43	118.62	128.68
2	A	1	NAP	N3A-C2A-N1A	-5.86	119.52	128.68
2	A	1	NAP	C3N-C7N-N7N	3.89	122.42	117.75

Continued on next page...

Continued from previous page...

Mol	Chain	Res	Type	Atoms	Z	Observed(°)	Ideal(°)
4	B	1	CPS	C19-C18-C17	-3.72	107.42	111.88
2	B	2	NAP	O2B-P2B-O1X	-3.43	96.16	109.39
2	A	1	NAP	O7N-C7N-C3N	-3.38	115.59	119.63
4	B	1	CPS	O1S-S-C32	3.25	110.82	106.92
3	A	293	3CZ	O2-S1-O1	3.01	124.41	119.52
2	A	1	NAP	C3N-C2N-N1N	-2.98	117.52	120.43
2	B	2	NAP	C2N-C3N-C4N	2.96	121.62	118.26
4	B	1	CPS	C31-C32-S	-2.77	109.00	113.25
3	A	293	3CZ	O1-S1-N1	-2.64	102.15	106.97
4	B	1	CPS	C9-C5-C4	2.52	119.97	117.67
3	A	293	3CZ	C7-C2-N1	2.50	111.04	108.96
4	B	1	CPS	C19-C18-C6	2.42	113.04	109.71
3	A	293	3CZ	C13-C5-N2	-2.42	117.56	119.38
2	B	2	NAP	C3N-C7N-N7N	2.29	120.50	117.75
2	B	2	NAP	C2A-N1A-C6A	2.24	122.59	118.75
2	A	1	NAP	O2N-PN-O1N	2.22	123.23	112.24
2	A	1	NAP	C1B-N9A-C4A	-2.16	122.84	126.64
2	B	2	NAP	C3D-C2D-C1D	2.11	104.15	100.98
2	B	2	NAP	O4D-C1D-C2D	-2.08	103.88	106.93
3	A	293	3CZ	O4-N2-C5	-2.08	115.86	118.80

There are no chirality outliers.

All (24) torsion outliers are listed below:

Mol	Chain	Res	Type	Atoms
2	A	1	NAP	C2B-O2B-P2B-O1X
2	A	1	NAP	C5D-O5D-PN-O1N
2	B	2	NAP	C2B-O2B-P2B-O1X
4	B	1	CPS	C23-C24-N1-C25
4	B	1	CPS	O1-C24-N1-C25
4	B	1	CPS	C26-C27-N2-C29
4	B	1	CPS	N2-C30-C31-C32
4	B	1	CPS	C31-C30-N2-C27
4	B	1	CPS	C31-C30-N2-C29
4	B	1	CPS	C31-C32-S-O3S
4	B	1	CPS	C31-C32-S-O1S
4	B	1	CPS	C31-C30-N2-C28
4	B	1	CPS	C26-C27-N2-C30
4	B	1	CPS	C31-C32-S-O2S
4	B	1	CPS	C26-C27-N2-C28
4	B	1	CPS	C30-C31-C32-S
4	B	1	CPS	N1-C25-C26-C27

Continued on next page...

Continued from previous page...

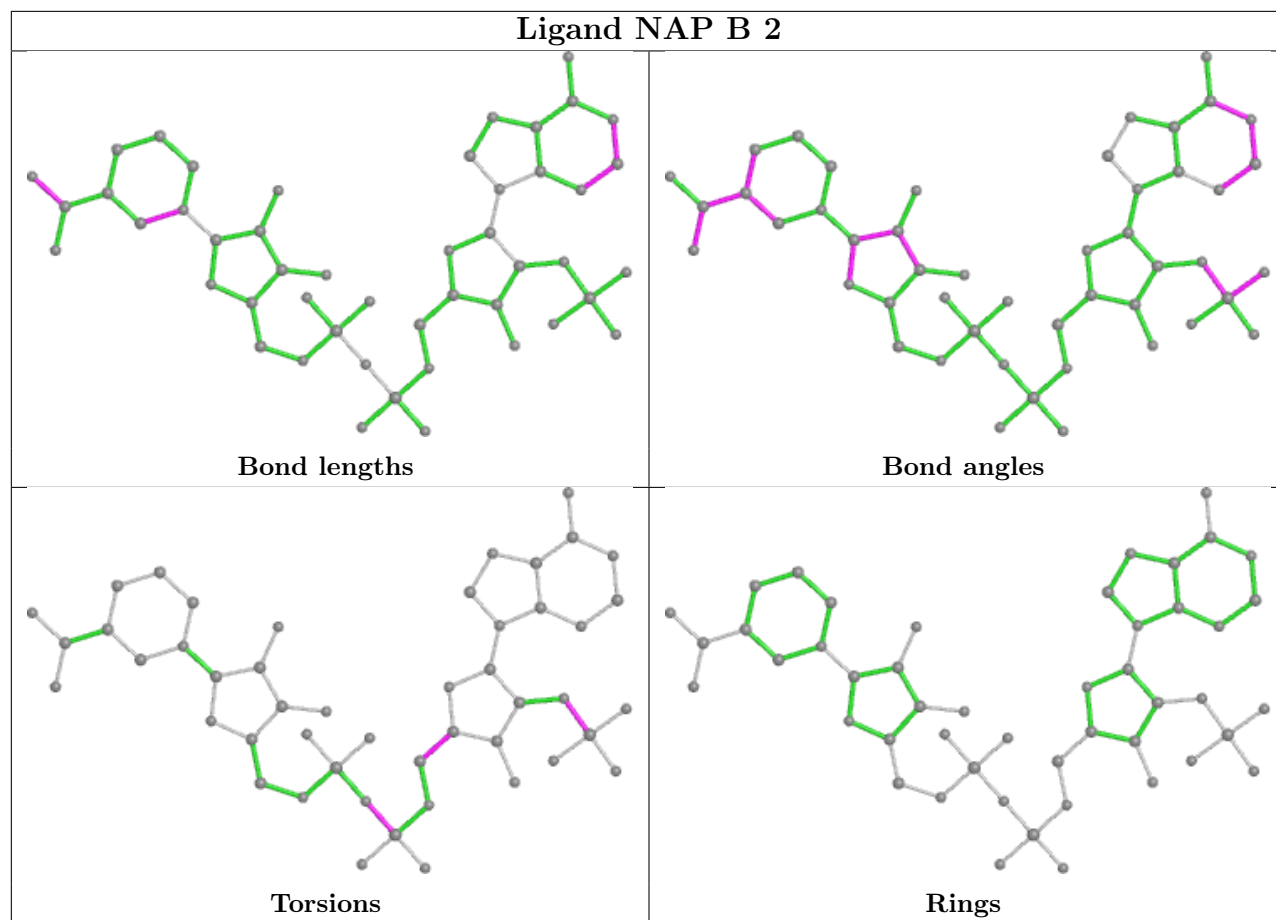
Mol	Chain	Res	Type	Atoms
2	A	1	NAP	C2B-O2B-P2B-O2X
2	A	1	NAP	C5D-O5D-PN-O3
2	A	1	NAP	C5D-O5D-PN-O2N
2	B	2	NAP	O4B-C4B-C5B-O5B
2	A	1	NAP	O4B-C4B-C5B-O5B
2	B	2	NAP	PN-O3-PA-O2A
4	B	1	CPS	C21-C20-C22-C23

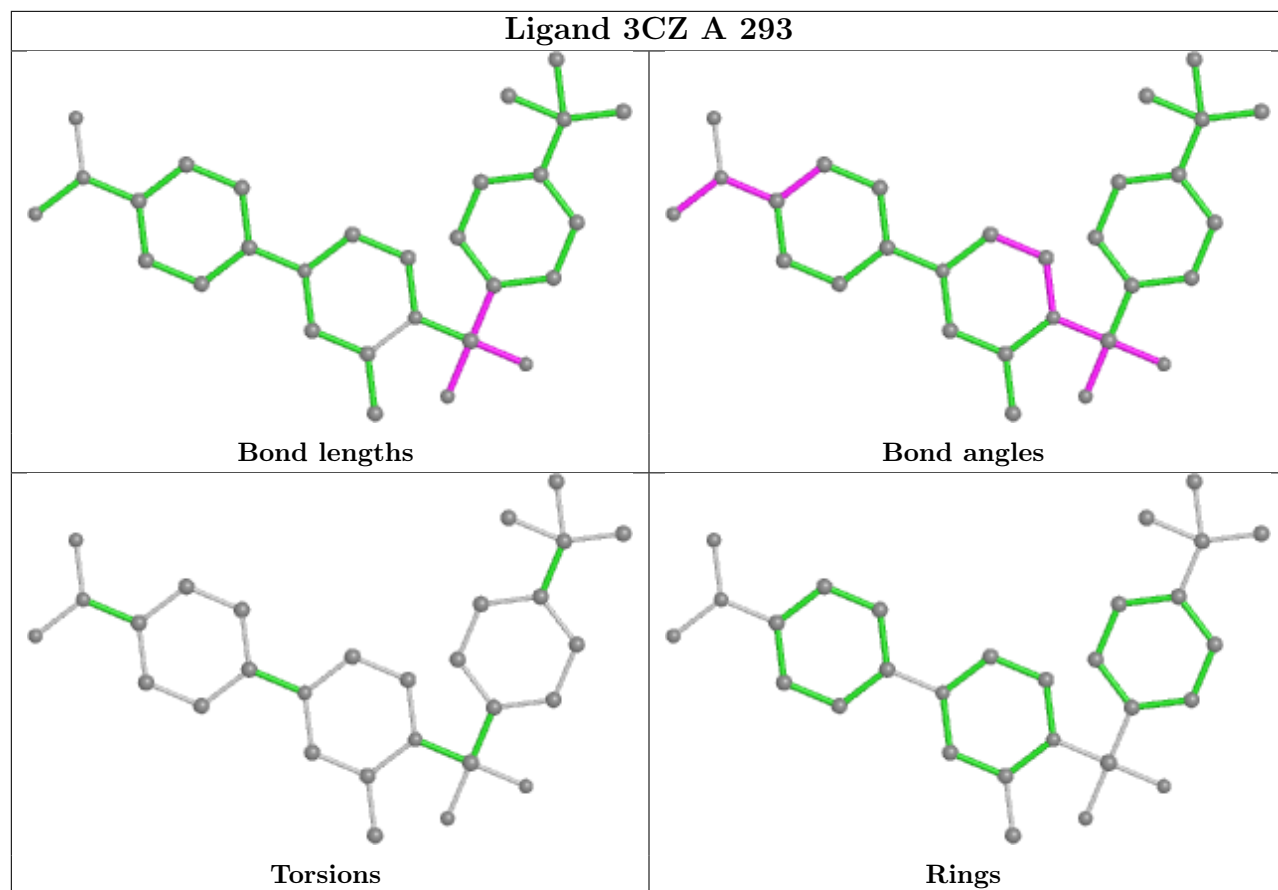
There are no ring outliers.

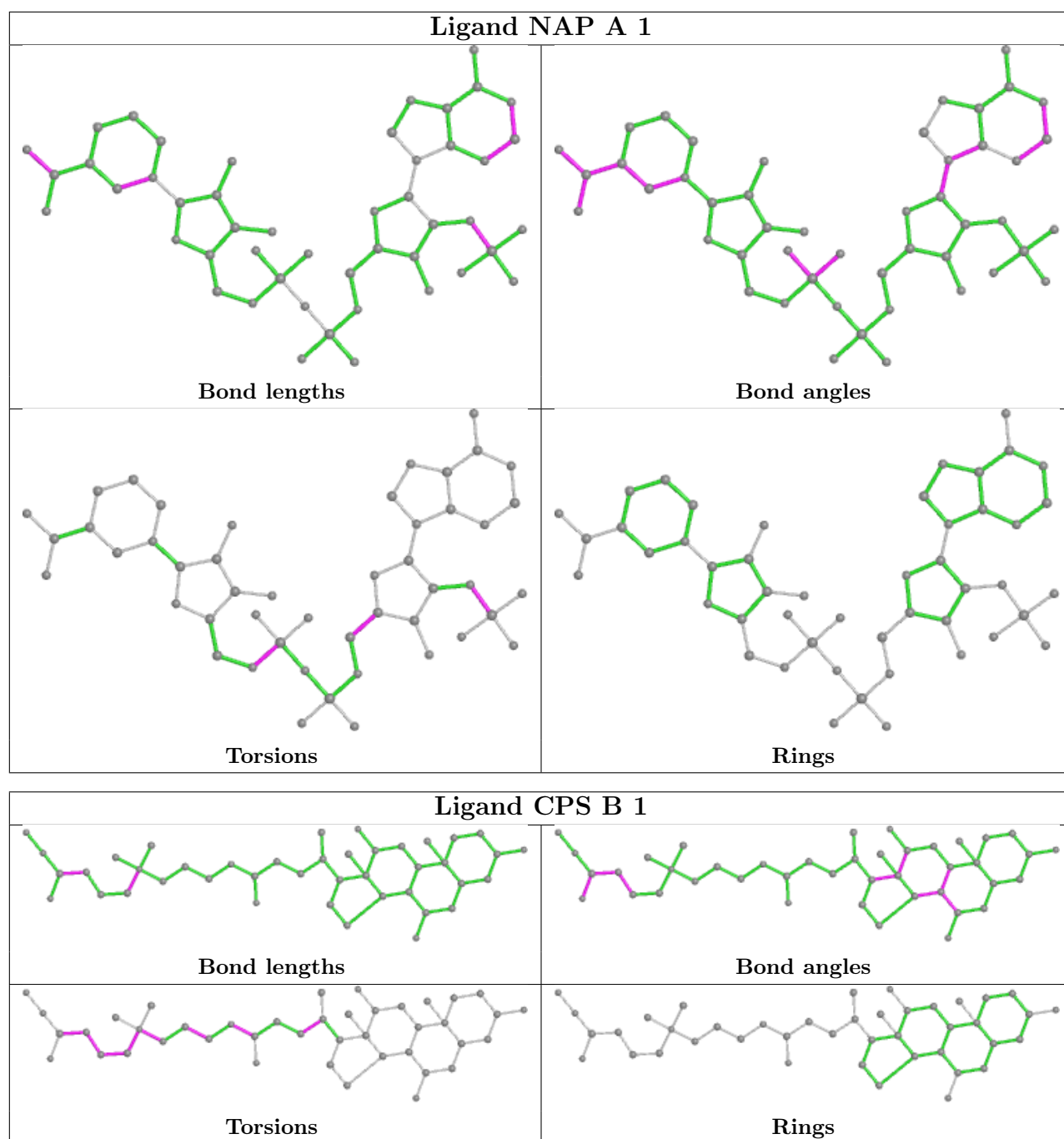
2 monomers are involved in 4 short contacts:

Mol	Chain	Res	Type	Clashes	Symm-Clashes
3	A	293	3CZ	1	0
4	B	1	CPS	3	0

The following is a two-dimensional graphical depiction of Mogul quality analysis of bond lengths, bond angles, torsion angles, and ring geometry for all instances of the Ligand of Interest. In addition, ligands with molecular weight > 250 and outliers as shown on the validation Tables will also be included. For torsion angles, if less than 5% of the Mogul distribution of torsion angles is within 10 degrees of the torsion angle in question, then that torsion angle is considered an outlier. Any bond that is central to one or more torsion angles identified as an outlier by Mogul will be highlighted in the graph. For rings, the root-mean-square deviation (RMSD) between the ring in question and similar rings identified by Mogul is calculated over all ring torsion angles. If the average RMSD is greater than 60 degrees and the minimal RMSD between the ring in question and any Mogul-identified rings is also greater than 60 degrees, then that ring is considered an outlier. The outliers are highlighted in purple. The color gray indicates Mogul did not find sufficient equivalents in the CSD to analyse the geometry.







5.7 Other polymers [i](#)

There are no such residues in this entry.

5.8 Polymer linkage issues [i](#)

There are no chain breaks in this entry.

6 Fit of model and data

6.1 Protein, DNA and RNA chains

In the following table, the column labelled ‘#RSRZ> 2’ contains the number (and percentage) of RSRZ outliers, followed by percent RSRZ outliers for the chain as percentile scores relative to all X-ray entries and entries of similar resolution. The OWAB column contains the minimum, median, 95th percentile and maximum values of the occupancy-weighted average B-factor per residue. The column labelled ‘Q< 0.9’ lists the number of (and percentage) of residues with an average occupancy less than 0.9.

Mol	Chain	Analysed	<RSRZ>	#RSRZ>2	OWAB(Å ²)	Q<0.9
1	A	265/286 (92%)	0.21	5 (1%) 66 76	35, 56, 79, 95	0
1	B	263/286 (91%)	0.45	23 (8%) 10 15	35, 64, 95, 107	0
All	All	528/572 (92%)	0.33	28 (5%) 26 38	35, 60, 92, 107	0

All (28) RSRZ outliers are listed below:

Mol	Chain	Res	Type	RSRZ
1	B	112	GLY	6.0
1	B	233	MET	5.4
1	B	23	LEU	5.2
1	B	81	LEU	4.4
1	B	33	GLN	3.8
1	B	32	LEU	3.7
1	B	21	GLN	3.3
1	B	280[A]	TYR	3.3
1	B	59	ALA	3.1
1	A	112	GLY	3.0
1	B	24	ASN	2.8
1	B	208	VAL	2.7
1	B	37	VAL	2.6
1	B	30	GLU	2.6
1	B	36	LYS	2.4
1	A	60	HIS	2.4
1	B	60	HIS	2.4
1	B	110	MET	2.4
1	B	62	VAL	2.4
1	B	232	HIS	2.4
1	B	111	GLY	2.3
1	B	78	CYS	2.3
1	B	158	LEU	2.3
1	B	160	GLN	2.2

Continued on next page...

Continued from previous page...

Mol	Chain	Res	Type	RSRZ
1	A	109	LEU	2.1
1	A	130	HIS	2.0
1	A	232	HIS	2.0
1	B	58	GLY	2.0

6.2 Non-standard residues in protein, DNA, RNA chains [i](#)

There are no non-standard protein/DNA/RNA residues in this entry.

6.3 Carbohydrates [i](#)

There are no monosaccharides in this entry.

6.4 Ligands [i](#)

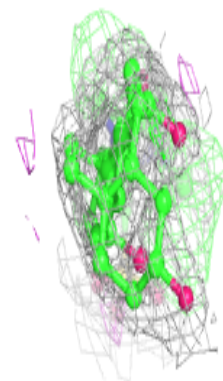
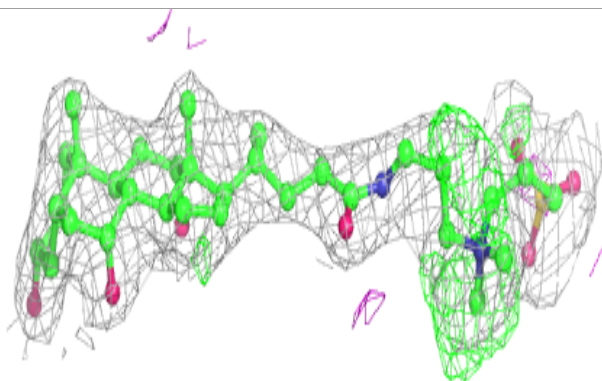
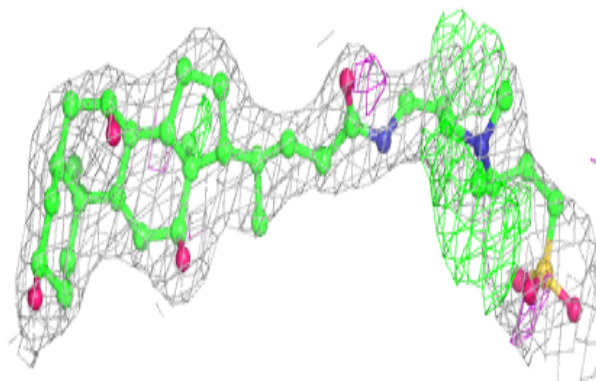
In the following table, the Atoms column lists the number of modelled atoms in the group and the number defined in the chemical component dictionary. The B-factors column lists the minimum, median, 95th percentile and maximum values of B factors of atoms in the group. The column labelled 'Q < 0.9' lists the number of atoms with occupancy less than 0.9.

Mol	Type	Chain	Res	Atoms	RSCC	RSR	B-factors(Å ²)	Q < 0.9
4	CPS	B	1	42/42	0.88	0.14	48,53,97,98	0
2	NAP	A	1	48/48	0.96	0.12	38,46,60,63	0
3	3CZ	A	293	29/29	0.97	0.15	45,49,67,70	0
2	NAP	B	2	48/48	0.98	0.11	38,45,54,56	0

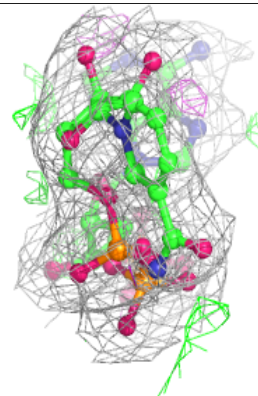
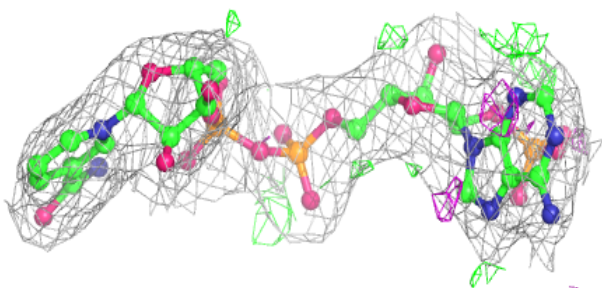
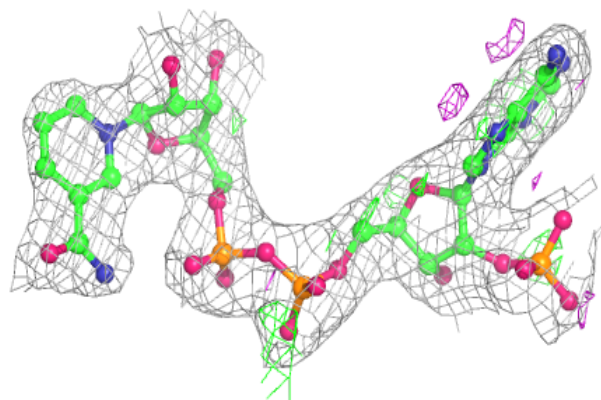
The following is a graphical depiction of the model fit to experimental electron density of all instances of the Ligand of Interest. In addition, ligands with molecular weight > 250 and outliers as shown on the geometry validation Tables will also be included. Each fit is shown from different orientation to approximate a three-dimensional view.

Electron density around CPS B 1:

$2mF_o-DF_c$ (at 0.7 rmsd) in gray
 mF_o-DF_c (at 3 rmsd) in purple (negative)
and green (positive)

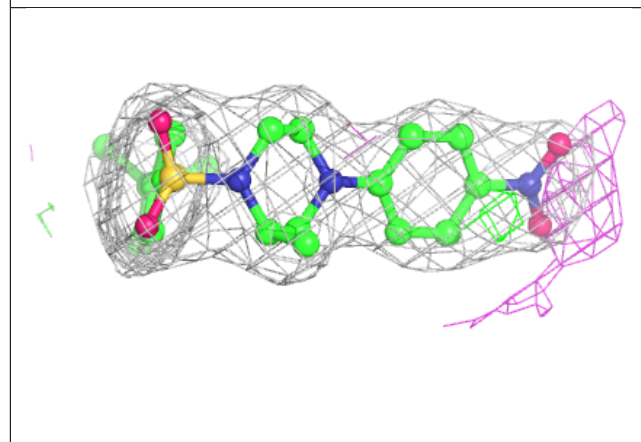
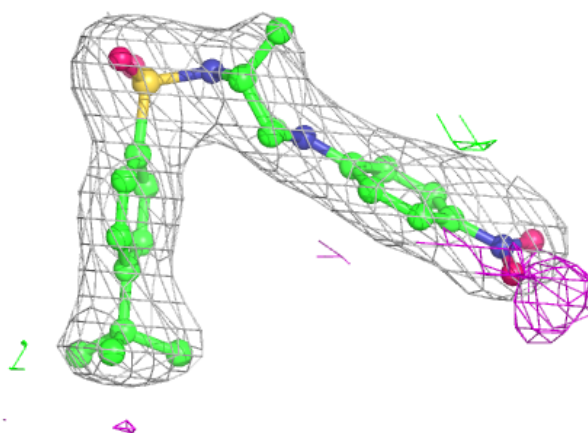
**Electron density around NAP A 1:**

$2mF_o-DF_c$ (at 0.7 rmsd) in gray
 mF_o-DF_c (at 3 rmsd) in purple (negative)
and green (positive)

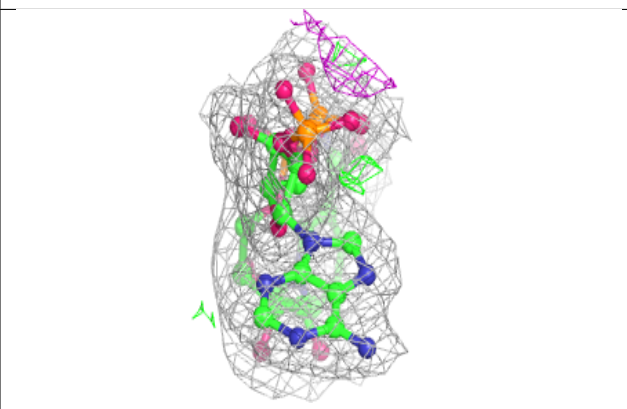
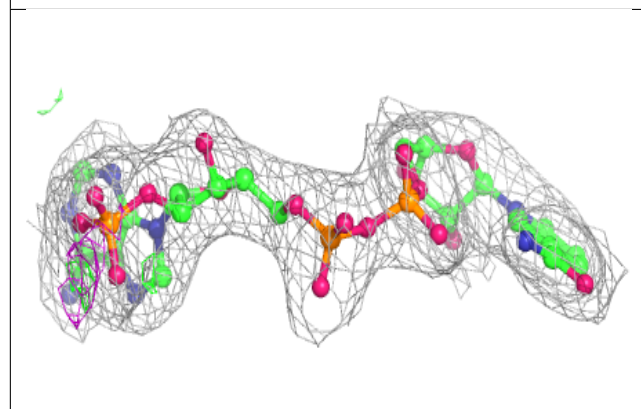
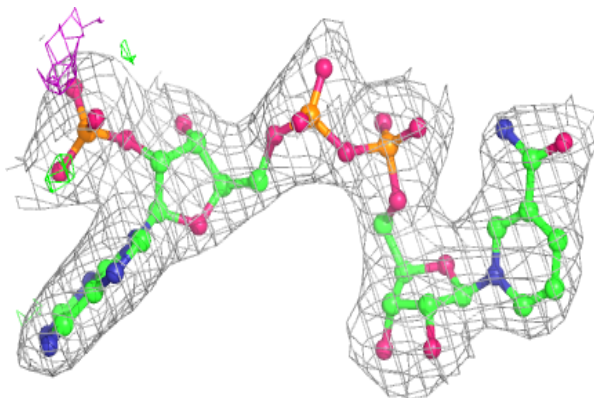


Electron density around 3CZ A 293:

$2mF_o-DF_c$ (at 0.7 rmsd) in gray
 mF_o-DF_c (at 3 rmsd) in purple (negative)
and green (positive)

**Electron density around NAP B 2:**

$2mF_o-DF_c$ (at 0.7 rmsd) in gray
 mF_o-DF_c (at 3 rmsd) in purple (negative)
and green (positive)



6.5 Other polymers [i](#)

There are no such residues in this entry.