



# Full wwPDB X-ray Structure Validation Report ⓘ

Sep 26, 2023 – 11:30 AM EDT

PDB ID : 6CZW  
Title : Crystal structure of PT1940 bound to HIF2a-B\*:ARNT-B\* complex  
Authors : Du, X.  
Deposited on : 2018-04-09  
Resolution : 1.60 Å(reported)

This is a Full wwPDB X-ray Structure Validation Report for a publicly released PDB entry.

We welcome your comments at [validation@mail.wwpdb.org](mailto:validation@mail.wwpdb.org)

A user guide is available at

<https://www.wwpdb.org/validation/2017/XrayValidationReportHelp>

with specific help available everywhere you see the ⓘ symbol.

The types of validation reports are described at

<http://www.wwpdb.org/validation/2017/FAQs#types>.

---

The following versions of software and data (see [references ⓘ](#)) were used in the production of this report:

MolProbity : 4.02b-467  
Mogul : 1.8.5 (274361), CSD as541be (2020)  
Xtriage (Phenix) : 1.13  
EDS : 2.35.1  
buster-report : 1.1.7 (2018)  
Percentile statistics : 20191225.v01 (using entries in the PDB archive December 25th 2019)  
Refmac : 5.8.0158  
CCP4 : 7.0.044 (Gargrove)  
Ideal geometry (proteins) : Engh & Huber (2001)  
Ideal geometry (DNA, RNA) : Parkinson et al. (1996)  
Validation Pipeline (wwPDB-VP) : 2.35.1

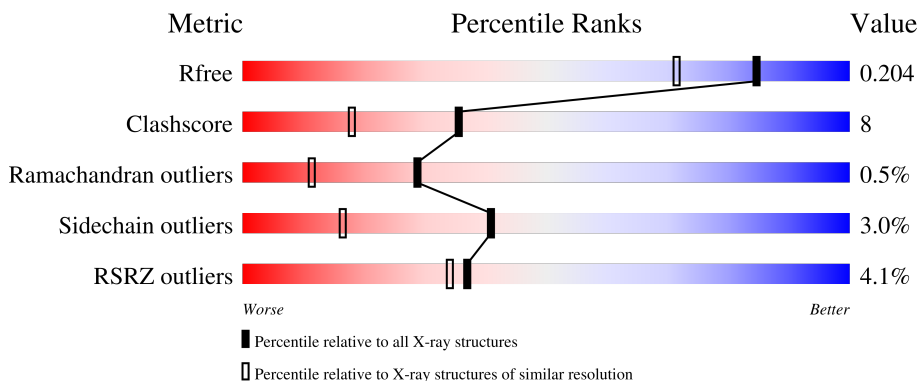
# 1 Overall quality at a glance

The following experimental techniques were used to determine the structure:

*X-RAY DIFFRACTION*

The reported resolution of this entry is 1.60 Å.

Percentile scores (ranging between 0-100) for global validation metrics of the entry are shown in the following graphic. The table shows the number of entries on which the scores are based.



Metric	Whole archive (#Entries)	Similar resolution (#Entries, resolution range(Å))
$R_{free}$	130704	3398 (1.60-1.60)
Clashscore	141614	3665 (1.60-1.60)
Ramachandran outliers	138981	3564 (1.60-1.60)
Sidechain outliers	138945	3563 (1.60-1.60)
RSRZ outliers	127900	3321 (1.60-1.60)

The table below summarises the geometric issues observed across the polymeric chains and their fit to the electron density. The red, orange, yellow and green segments of the lower bar indicate the fraction of residues that contain outliers for  $\geq 3$ , 2, 1 and 0 types of geometric quality criteria respectively. A grey segment represents the fraction of residues that are not modelled. The numeric value for each fraction is indicated below the corresponding segment, with a dot representing fractions  $\leq 5\%$ . The upper red bar (where present) indicates the fraction of residues that have poor fit to the electron density. The numeric value is given above the bar.

Mol	Chain	Length	Quality of chain
1	A	117	 5% 68% 23% • 7%
2	B	121	 2% 74% 12% •• 9%

## 2 Entry composition [i](#)

There are 4 unique types of molecules in this entry. The entry contains 1893 atoms, of which 0 are hydrogens and 0 are deuteriums.

In the tables below, the ZeroOcc column contains the number of atoms modelled with zero occupancy, the AltConf column contains the number of residues with at least one atom in alternate conformation and the Trace column contains the number of residues modelled with at most 2 atoms.

- Molecule 1 is a protein called Endothelial PAS domain-containing protein 1.

Mol	Chain	Residues	Atoms					ZeroOcc	AltConf	Trace
			Total	C	N	O	S			
1	A	109	895	570	144	172	9	0	2	0

There are 6 discrepancies between the modelled and reference sequences:

Chain	Residue	Modelled	Actual	Comment	Reference
A	-2	GLY	-	expression tag	UNP Q99814
A	-1	GLU	-	expression tag	UNP Q99814
A	0	PHE	-	expression tag	UNP Q99814
A	1	LYS	-	expression tag	UNP Q99814
A	2	GLY	-	expression tag	UNP Q99814
A	247	GLU	ARG	engineered mutation	UNP Q99814

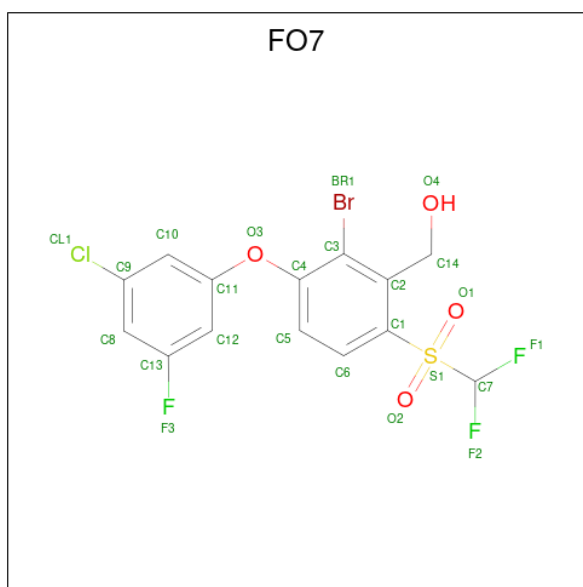
- Molecule 2 is a protein called Aryl hydrocarbon receptor nuclear translocator.

Mol	Chain	Residues	Atoms					ZeroOcc	AltConf	Trace
			Total	C	N	O	S			
2	B	110	917	583	161	167	6	0	0	0

There are 7 discrepancies between the modelled and reference sequences:

Chain	Residue	Modelled	Actual	Comment	Reference
B	350	GLY	-	expression tag	UNP P27540
B	351	GLU	-	expression tag	UNP P27540
B	352	PHE	-	expression tag	UNP P27540
B	353	LYS	-	expression tag	UNP P27540
B	354	GLY	-	expression tag	UNP P27540
B	355	LEU	-	expression tag	UNP P27540
B	362	ARG	GLU	engineered mutation	UNP P27540

- Molecule 3 is {2-bromo-3-(3-chloro-5-fluorophenoxy)-6-[(difluoromethyl)sulfonyl]phenyl}methanol (three-letter code: FO7) (formula: C<sub>14</sub>H<sub>9</sub>BrClF<sub>3</sub>O<sub>4</sub>S).



Mol	Chain	Residues	Atoms							ZeroOcc	AltConf
			Total	Br	C	Cl	F	O	S		
3	A	1	24	1	14	1	3	4	1	0	0

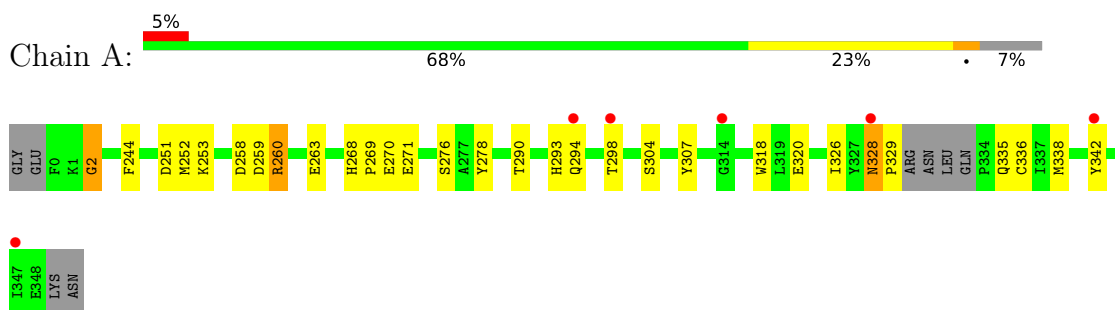
- Molecule 4 is water.

Mol	Chain	Residues	Atoms		ZeroOcc	AltConf
4	A	25	Total	O	0	0
			25	25		
4	B	32	Total	O	0	0
			32	32		

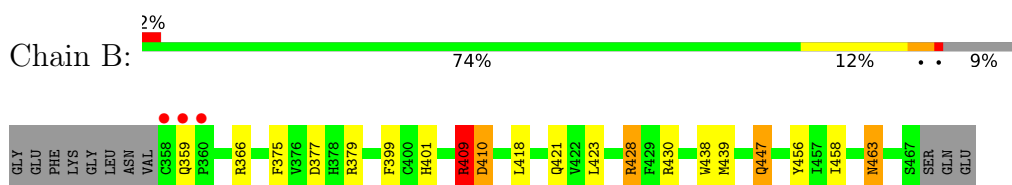
### 3 Residue-property plots [i](#)

These plots are drawn for all protein, RNA, DNA and oligosaccharide chains in the entry. The first graphic for a chain summarises the proportions of the various outlier classes displayed in the second graphic. The second graphic shows the sequence view annotated by issues in geometry and electron density. Residues are color-coded according to the number of geometric quality criteria for which they contain at least one outlier: green = 0, yellow = 1, orange = 2 and red = 3 or more. A red dot above a residue indicates a poor fit to the electron density ( $RSRZ > 2$ ). Stretches of 2 or more consecutive residues without any outlier are shown as a green connector. Residues present in the sample, but not in the model, are shown in grey.

- Molecule 1: Endothelial PAS domain-containing protein 1



- Molecule 2: Aryl hydrocarbon receptor nuclear translocator



## 4 Data and refinement statistics

Property	Value	Source
Space group	C 1 2 1	Depositor
Cell constants a, b, c, $\alpha$ , $\beta$ , $\gamma$	73.93Å 83.53Å 41.52Å 90.00° 106.72° 90.00°	Depositor
Resolution (Å)	27.01 – 1.60 27.01 – 1.60	Depositor EDS
% Data completeness (in resolution range)	98.8 (27.01-1.60) 98.9 (27.01-1.60)	Depositor EDS
$R_{merge}$	(Not available)	Depositor
$R_{sym}$	(Not available)	Depositor
$\langle I/\sigma(I) \rangle$ <sup>1</sup>	1.37 (at 1.60Å)	Xtrriage
Refinement program	REFMAC 5.6.0117	Depositor
R, $R_{free}$	0.211 , 0.251 0.213 , 0.204	Depositor DCC
$R_{free}$ test set	1609 reflections (5.11%)	wwPDB-VP
Wilson B-factor (Å <sup>2</sup> )	20.4	Xtrriage
Anisotropy	0.050	Xtrriage
Bulk solvent $k_{sol}$ (e/Å <sup>3</sup> ), $B_{sol}$ (Å <sup>2</sup> )	0.36 , 40.6	EDS
L-test for twinning <sup>2</sup>	$\langle  L  \rangle = 0.50$ , $\langle L^2 \rangle = 0.33$	Xtrriage
Estimated twinning fraction	No twinning to report.	Xtrriage
$F_o, F_c$ correlation	0.95	EDS
Total number of atoms	1893	wwPDB-VP
Average B, all atoms (Å <sup>2</sup> )	24.0	wwPDB-VP

Xtrriage's analysis on translational NCS is as follows: *The largest off-origin peak in the Patterson function is 7.98% of the height of the origin peak. No significant pseudotranslation is detected.*

<sup>1</sup>Intensities estimated from amplitudes.

<sup>2</sup>Theoretical values of  $\langle |L| \rangle$ ,  $\langle L^2 \rangle$  for acentric reflections are 0.5, 0.333 respectively for untwinned datasets, and 0.375, 0.2 for perfectly twinned datasets.

## 5 Model quality i

### 5.1 Standard geometry i

Bond lengths and bond angles in the following residue types are not validated in this section: FO7

The Z score for a bond length (or angle) is the number of standard deviations the observed value is removed from the expected value. A bond length (or angle) with  $|Z| > 5$  is considered an outlier worth inspection. RMSZ is the root-mean-square of all Z scores of the bond lengths (or angles).

Mol	Chain	Bond lengths		Bond angles	
		RMSZ	# Z  >5	RMSZ	# Z  >5
1	A	1.17	4/925 (0.4%)	1.20	7/1246 (0.6%)
2	B	1.29	4/939 (0.4%)	1.81	8/1269 (0.6%)
All	All	1.24	8/1864 (0.4%)	1.54	15/2515 (0.6%)

Chiral center outliers are detected by calculating the chiral volume of a chiral center and verifying if the center is modelled as a planar moiety or with the opposite hand. A planarity outlier is detected by checking planarity of atoms in a peptide group, atoms in a mainchain group or atoms of a sidechain that are expected to be planar.

Mol	Chain	#Chirality outliers	#Planarity outliers
1	A	0	1
2	B	0	1
All	All	0	2

All (8) bond length outliers are listed below:

Mol	Chain	Res	Type	Atoms	Z	Observed(Å)	Ideal(Å)
1	A	2	GLY	C-N	11.44	1.60	1.34
2	B	409	ARG	CZ-NH1	6.86	1.42	1.33
1	A	318	TRP	CD2-CE2	6.07	1.48	1.41
2	B	463	ASN	CB-CG	5.95	1.64	1.51
2	B	438	TRP	CD2-CE2	5.92	1.48	1.41
1	A	307	TYR	CE1-CZ	5.79	1.46	1.38
2	B	399	PHE	CG-CD1	5.29	1.46	1.38
1	A	244	PHE	CG-CD2	5.24	1.46	1.38

All (15) bond angle outliers are listed below:

Mol	Chain	Res	Type	Atoms	Z	Observed(°)	Ideal(°)
2	B	409	ARG	NE-CZ-NH1	34.52	137.56	120.30

*Continued on next page...*

Continued from previous page...

Mol	Chain	Res	Type	Atoms	Z	Observed(°)	Ideal(°)
2	B	409	ARG	NE-CZ-NH2	-30.70	104.95	120.30
2	B	410	ASP	CB-CG-OD2	10.84	128.05	118.30
2	B	409	ARG	CD-NE-CZ	10.70	138.59	123.60
1	A	260	ARG	NE-CZ-NH1	9.29	124.94	120.30
1	A	2	GLY	O-C-N	-8.43	109.22	122.70
2	B	379	ARG	NE-CZ-NH2	-8.41	116.10	120.30
1	A	259	ASP	CB-CG-OD1	6.61	124.25	118.30
2	B	430	ARG	NE-CZ-NH2	-6.31	117.14	120.30
1	A	260	ARG	NE-CZ-NH2	-6.17	117.21	120.30
1	A	304	SER	C-N-CA	-5.55	110.64	122.30
1	A	258	ASP	CB-CG-OD2	-5.28	113.55	118.30
2	B	439	MET	CG-SD-CE	-5.13	91.99	100.20
1	A	258	ASP	CB-CA-C	-5.07	100.27	110.40
2	B	428	ARG	NE-CZ-NH2	-5.06	117.77	120.30

There are no chirality outliers.

All (2) planarity outliers are listed below:

Mol	Chain	Res	Type	Group
1	A	2	GLY	Mainchain
2	B	409	ARG	Sidechain

## 5.2 Too-close contacts

In the following table, the Non-H and H(model) columns list the number of non-hydrogen atoms and hydrogen atoms in the chain respectively. The H(added) column lists the number of hydrogen atoms added and optimized by MolProbity. The Clashes column lists the number of clashes within the asymmetric unit, whereas Symm-Clashes lists symmetry-related clashes.

Mol	Chain	Non-H	H(model)	H(added)	Clashes	Symm-Clashes
1	A	895	0	862	20	0
2	B	917	0	891	9	1
3	A	24	0	0	0	0
4	A	25	0	0	1	0
4	B	32	0	0	1	0
All	All	1893	0	1753	29	1

The all-atom clashscore is defined as the number of clashes found per 1000 atoms (including hydrogen atoms). The all-atom clashscore for this structure is 8.

All (29) close contacts within the same asymmetric unit are listed below, sorted by their clash magnitude.



Atom-1	Atom-2	Interatomic distance (Å)	Clash overlap (Å)
1:A:328:ASN:HB3	1:A:329:PRO:HD3	1.31	1.08
1:A:326:ILE:HD11	1:A:338:MET:HG3	1.71	0.72
1:A:328:ASN:HB3	1:A:329:PRO:CD	2.14	0.71
2:B:456:TYR:HE2	2:B:458:ILE:HD11	1.56	0.70
1:A:328:ASN:HB2	1:A:335:GLN:CG	2.22	0.69
2:B:366:ARG:HD3	4:B:510:HOH:O	1.94	0.68
1:A:328:ASN:CB	1:A:329:PRO:HD3	2.16	0.65
1:A:328:ASN:HB2	1:A:335:GLN:HG3	1.78	0.65
1:A:290:THR:O	1:A:294:GLN:HG3	2.05	0.57
1:A:252:MET:SD	1:A:293:HIS:CE1	2.98	0.57
2:B:418:LEU:O	2:B:421:GLN:HG3	2.06	0.55
1:A:251:ASP:C	1:A:252:MET:HG2	2.30	0.52
2:B:456:TYR:CE2	2:B:458:ILE:HD11	2.43	0.51
1:A:326:ILE:HD12	1:A:336:CYS:SG	2.50	0.51
2:B:423:LEU:HD23	2:B:423:LEU:C	2.31	0.51
4:A:511:HOH:O	2:B:409:ARG:HD3	2.10	0.51
2:B:401:HIS:HB2	2:B:428:ARG:HB2	1.93	0.49
1:A:253:LYS:HA	1:A:276:SER:HA	1.95	0.48
1:A:320:GLU:O	1:A:342[B]:TYR:CD2	2.67	0.47
1:A:270:GLU:H	1:A:270:GLU:CD	2.19	0.46
1:A:278:TYR:OH	1:A:290:THR:HA	2.16	0.45
1:A:294:GLN:O	1:A:298:THR:HG23	2.16	0.45
2:B:447:GLN:HE21	2:B:447:GLN:HB3	1.62	0.44
1:A:328:ASN:HB2	1:A:335:GLN:CD	2.39	0.42
2:B:366:ARG:HB3	2:B:375:PHE:HB3	2.02	0.42
1:A:268:HIS:O	1:A:271:GLU:HG2	2.20	0.41
1:A:263:GLU:O	1:A:263:GLU:HG2	2.21	0.41

All (1) symmetry-related close contacts are listed below. The label for Atom-2 includes the symmetry operator and encoded unit-cell translations to be applied.

Atom-1	Atom-2	Interatomic distance (Å)	Clash overlap (Å)
2:B:410:ASP:OD1	2:B:410:ASP:OD1[2_554]	1.07	1.13

## 5.3 Torsion angles [i](#)

### 5.3.1 Protein backbone [i](#)

In the following table, the Percentiles column shows the percent Ramachandran outliers of the chain as a percentile score with respect to all X-ray entries followed by that with respect to entries of similar resolution.

The Analysed column shows the number of residues for which the backbone conformation was analysed, and the total number of residues.

Mol	Chain	Analysed	Favoured	Allowed	Outliers	Percentiles	
1	A	108/117 (92%)	106 (98%)	1 (1%)	1 (1%)	17	4
2	B	108/121 (89%)	108 (100%)	0	0	100	100
All	All	216/238 (91%)	214 (99%)	1 (0%)	1 (0%)	29	11

All (1) Ramachandran outliers are listed below:

Mol	Chain	Res	Type
1	A	328	ASN

### 5.3.2 Protein sidechains [i](#)

In the following table, the Percentiles column shows the percent sidechain outliers of the chain as a percentile score with respect to all X-ray entries followed by that with respect to entries of similar resolution.

The Analysed column shows the number of residues for which the sidechain conformation was analysed, and the total number of residues.

Mol	Chain	Analysed	Rotameric	Outliers	Percentiles	
1	A	101/105 (96%)	99 (98%)	2 (2%)	55	31
2	B	105/114 (92%)	101 (96%)	4 (4%)	33	10
All	All	206/219 (94%)	200 (97%)	6 (3%)	41	18

All (6) residues with a non-rotameric sidechain are listed below:

Mol	Chain	Res	Type
1	A	260	ARG
1	A	269	PRO
2	B	359	GLN
2	B	377	ASP
2	B	447	GLN
2	B	463	ASN

Sometimes sidechains can be flipped to improve hydrogen bonding and reduce clashes. All (2) such sidechains are listed below:

Mol	Chain	Res	Type
2	B	378	HIS

*Continued on next page...*

*Continued from previous page...*

Mol	Chain	Res	Type
2	B	447	GLN

### 5.3.3 RNA [i](#)

There are no RNA molecules in this entry.

## 5.4 Non-standard residues in protein, DNA, RNA chains [i](#)

There are no non-standard protein/DNA/RNA residues in this entry.

## 5.5 Carbohydrates [i](#)

There are no monosaccharides in this entry.

## 5.6 Ligand geometry [i](#)

1 ligand is modelled in this entry.

In the following table, the Counts columns list the number of bonds (or angles) for which Mogul statistics could be retrieved, the number of bonds (or angles) that are observed in the model and the number of bonds (or angles) that are defined in the Chemical Component Dictionary. The Link column lists molecule types, if any, to which the group is linked. The Z score for a bond length (or angle) is the number of standard deviations the observed value is removed from the expected value. A bond length (or angle) with  $|Z| > 2$  is considered an outlier worth inspection. RMSZ is the root-mean-square of all Z scores of the bond lengths (or angles).

Mol	Type	Chain	Res	Link	Bond lengths			Bond angles		
					Counts	RMSZ	# Z  > 2	Counts	RMSZ	# Z  > 2
3	FO7	A	401	-	21,25,25	1.07	1 (4%)	30,37,37	2.86	11 (36%)

In the following table, the Chirals column lists the number of chiral outliers, the number of chiral centers analysed, the number of these observed in the model and the number defined in the Chemical Component Dictionary. Similar counts are reported in the Torsion and Rings columns. '-' means no outliers of that kind were identified.

Mol	Type	Chain	Res	Link	Chirals	Torsions	Rings
3	FO7	A	401	-	-	0/16/18/18	0/2/2/2

All (1) bond length outliers are listed below:

Mol	Chain	Res	Type	Atoms	Z	Observed(Å)	Ideal(Å)
3	A	401	FO7	C2-C3	-2.57	1.35	1.39

All (11) bond angle outliers are listed below:

Mol	Chain	Res	Type	Atoms	Z	Observed(°)	Ideal(°)
3	A	401	FO7	O2-S1-O1	-9.98	109.56	118.71
3	A	401	FO7	C5-C4-C3	4.84	125.12	119.28
3	A	401	FO7	C10-C9-CL1	-4.06	114.08	119.15
3	A	401	FO7	F3-C13-C12	3.43	123.15	118.25
3	A	401	FO7	O2-S1-C7	-3.40	101.53	107.62
3	A	401	FO7	C8-C9-C10	3.31	125.78	121.66
3	A	401	FO7	O4-C14-C2	-3.15	103.10	111.66
3	A	401	FO7	C8-C13-C12	-3.06	119.66	123.52
3	A	401	FO7	O1-S1-C7	2.92	112.85	107.62
3	A	401	FO7	C11-C12-C13	2.72	121.20	117.56
3	A	401	FO7	C6-C1-C2	2.34	123.66	121.34

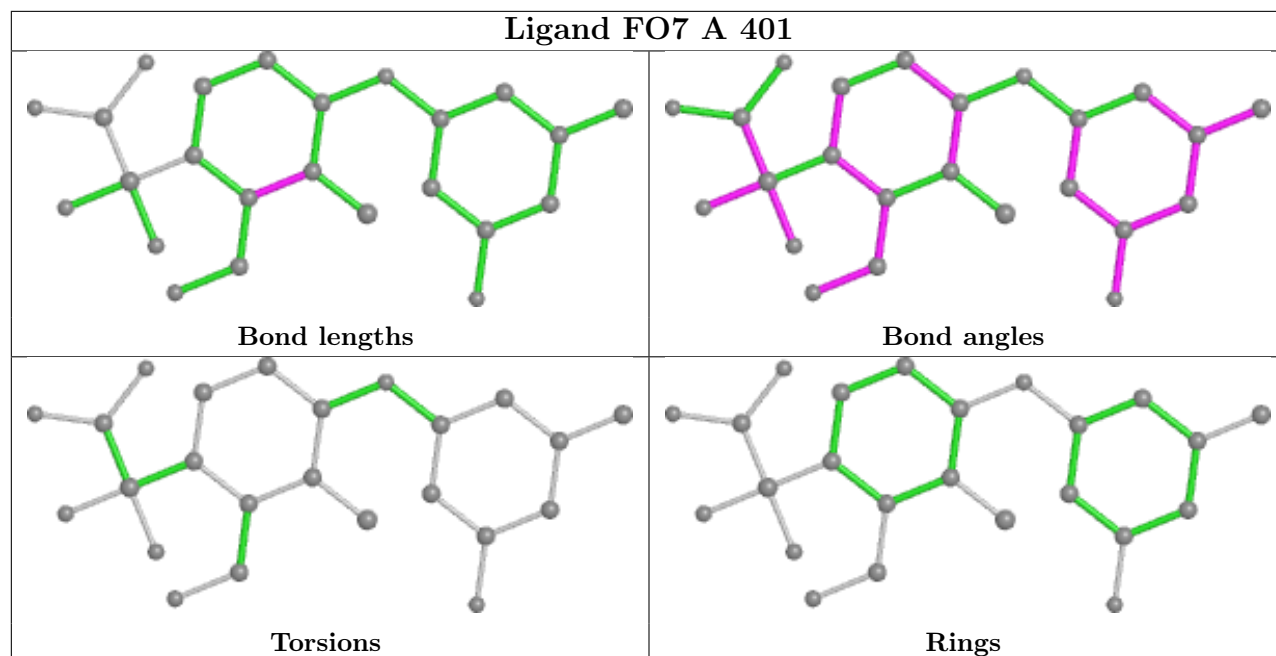
There are no chirality outliers.

There are no torsion outliers.

There are no ring outliers.

No monomer is involved in short contacts.

The following is a two-dimensional graphical depiction of Mogul quality analysis of bond lengths, bond angles, torsion angles, and ring geometry for all instances of the Ligand of Interest. In addition, ligands with molecular weight > 250 and outliers as shown on the validation Tables will also be included. For torsion angles, if less than 5% of the Mogul distribution of torsion angles is within 10 degrees of the torsion angle in question, then that torsion angle is considered an outlier. Any bond that is central to one or more torsion angles identified as an outlier by Mogul will be highlighted in the graph. For rings, the root-mean-square deviation (RMSD) between the ring in question and similar rings identified by Mogul is calculated over all ring torsion angles. If the average RMSD is greater than 60 degrees and the minimal RMSD between the ring in question and any Mogul-identified rings is also greater than 60 degrees, then that ring is considered an outlier. The outliers are highlighted in purple. The color gray indicates Mogul did not find sufficient equivalents in the CSD to analyse the geometry.



## 5.7 Other polymers [i](#)

There are no such residues in this entry.

## 5.8 Polymer linkage issues [i](#)

There are no chain breaks in this entry.

## 6 Fit of model and data [i](#)

### 6.1 Protein, DNA and RNA chains [i](#)

In the following table, the column labelled ‘#RSRZ> 2’ contains the number (and percentage) of RSRZ outliers, followed by percent RSRZ outliers for the chain as percentile scores relative to all X-ray entries and entries of similar resolution. The OWAB column contains the minimum, median, 95<sup>th</sup> percentile and maximum values of the occupancy-weighted average B-factor per residue. The column labelled ‘Q< 0.9’ lists the number of (and percentage) of residues with an average occupancy less than 0.9.

Mol	Chain	Analysed	<RSRZ>	#RSRZ>2	OWAB(Å <sup>2</sup> )	Q<0.9
1	A	109/117 (93%)	0.27	6 (5%) 25 22	14, 23, 45, 61	0
2	B	110/121 (90%)	-0.14	3 (2%) 54 52	14, 20, 34, 56	0
All	All	219/238 (92%)	0.06	9 (4%) 37 34	14, 22, 44, 61	0

All (9) RSRZ outliers are listed below:

Mol	Chain	Res	Type	RSRZ
1	A	342[A]	TYR	4.2
1	A	347	ILE	3.6
1	A	298	THR	2.5
2	B	360	PRO	2.4
1	A	328	ASN	2.3
1	A	294	GLN	2.2
2	B	358	CYS	2.2
2	B	359	GLN	2.2
1	A	314	GLY	2.2

### 6.2 Non-standard residues in protein, DNA, RNA chains [i](#)

There are no non-standard protein/DNA/RNA residues in this entry.

### 6.3 Carbohydrates [i](#)

There are no monosaccharides in this entry.

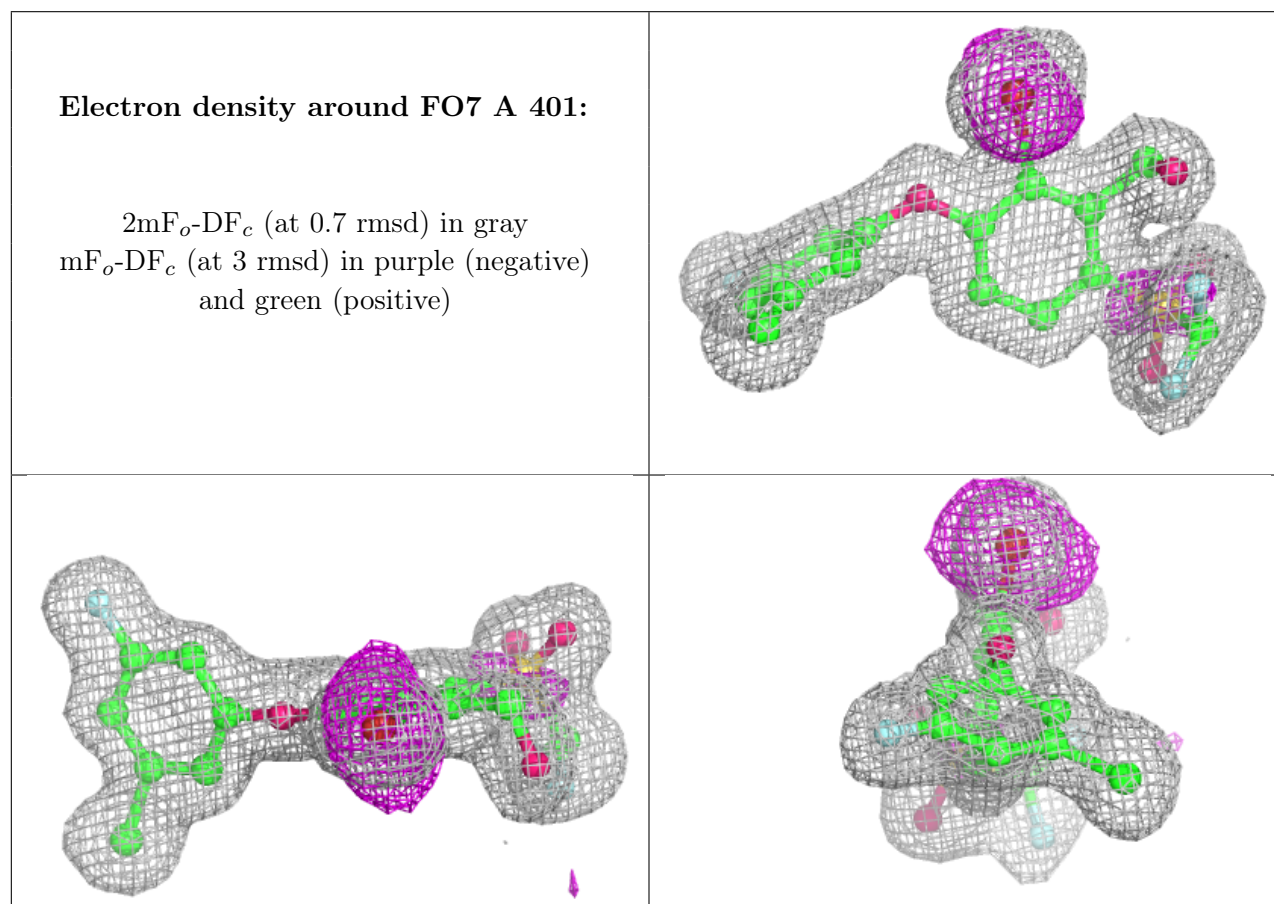
### 6.4 Ligands [i](#)

In the following table, the Atoms column lists the number of modelled atoms in the group and the number defined in the chemical component dictionary. The B-factors column lists the minimum,

median, 95<sup>th</sup> percentile and maximum values of B factors of atoms in the group. The column labelled 'Q < 0.9' lists the number of atoms with occupancy less than 0.9.

Mol	Type	Chain	Res	Atoms	RSCC	RSR	B-factors(Å <sup>2</sup> )	Q<0.9
3	FO7	A	401	24/24	0.95	0.11	16,25,32,43	0

The following is a graphical depiction of the model fit to experimental electron density of all instances of the Ligand of Interest. In addition, ligands with molecular weight > 250 and outliers as shown on the geometry validation Tables will also be included. Each fit is shown from different orientation to approximate a three-dimensional view.



## 6.5 Other polymers [i](#)

There are no such residues in this entry.