



Full wwPDB X-ray Structure Validation Report ⓘ

May 29, 2020 – 01:53 am BST

PDB ID : 1D2F
Title : X-RAY STRUCTURE OF MALY FROM ESCHERICHIA COLI: A PYRIDOXAL-5'-PHOSPHATE-DEPENDENT ENZYME ACTING AS A MODULATOR IN MAL GENE EXPRESSION
Authors : Clausen, T.
Deposited on : 1999-09-23
Resolution : 2.50 Å(reported)

This is a Full wwPDB X-ray Structure Validation Report for a publicly released PDB entry.

We welcome your comments at validation@mail.wwpdb.org

A user guide is available at

<https://www.wwpdb.org/validation/2017/XrayValidationReportHelp>

with specific help available everywhere you see the ⓘ symbol.

The following versions of software and data (see [references ⓘ](#)) were used in the production of this report:

MolProbity : 4.02b-467
Mogul : 1.8.5 (274361), CSD as541be (2020)
Xtriage (Phenix) : 1.13
EDS : 2.11
Percentile statistics : 20191225.v01 (using entries in the PDB archive December 25th 2019)
Refmac : 5.8.0158
CCP4 : 7.0.044 (Gargrove)
Ideal geometry (proteins) : Engh & Huber (2001)
Ideal geometry (DNA, RNA) : Parkinson et al. (1996)
Validation Pipeline (wwPDB-VP) : 2.11

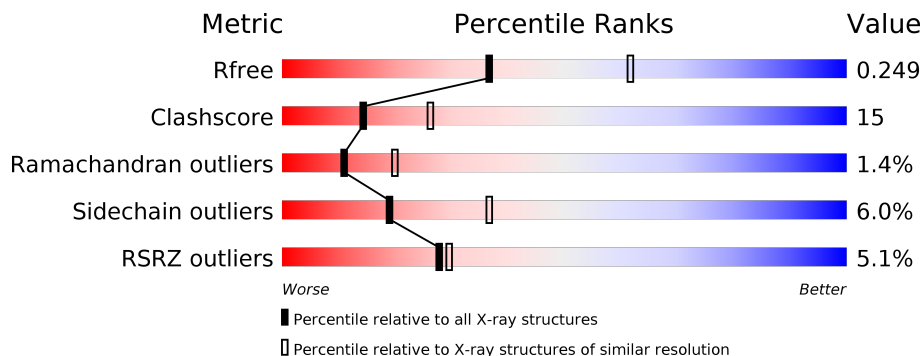
1 Overall quality at a glance i

The following experimental techniques were used to determine the structure:

X-RAY DIFFRACTION

The reported resolution of this entry is 2.50 Å.

Percentile scores (ranging between 0-100) for global validation metrics of the entry are shown in the following graphic. The table shows the number of entries on which the scores are based.



Metric	Whole archive (#Entries)	Similar resolution (#Entries, resolution range(Å))
R_{free}	130704	4661 (2.50-2.50)
Clashscore	141614	5346 (2.50-2.50)
Ramachandran outliers	138981	5231 (2.50-2.50)
Sidechain outliers	138945	5233 (2.50-2.50)
RSRZ outliers	127900	4559 (2.50-2.50)

The table below summarises the geometric issues observed across the polymeric chains and their fit to the electron density. The red, orange, yellow and green segments on the lower bar indicate the fraction of residues that contain outliers for ≥ 3 , 2, 1 and 0 types of geometric quality criteria respectively. A grey segment represents the fraction of residues that are not modelled. The numeric value for each fraction is indicated below the corresponding segment, with a dot representing fractions $\leq 5\%$. The upper red bar (where present) indicates the fraction of residues that have poor fit to the electron density. The numeric value is given above the bar.

Mol	Chain	Length	Quality of chain
1	A	390	
1	B	390	

2 Entry composition [i](#)

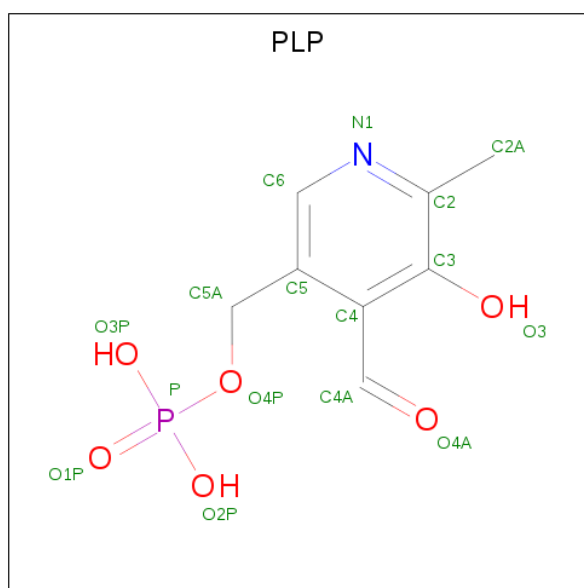
There are 3 unique types of molecules in this entry. The entry contains 5914 atoms, of which 0 are hydrogens and 0 are deuteriums.

In the tables below, the ZeroOcc column contains the number of atoms modelled with zero occupancy, the AltConf column contains the number of residues with at least one atom in alternate conformation and the Trace column contains the number of residues modelled with at most 2 atoms.

- Molecule 1 is a protein called MALY PROTEIN.

Mol	Chain	Residues	Atoms					ZeroOcc	AltConf	Trace
			Total	C	N	O	S			
1	A	361	Total 2829	C 1808	N 479	O 524	S 18	0	0	0
1	B	368	Total 2888	C 1849	N 487	O 534	S 18	0	0	0

- Molecule 2 is PYRIDOXAL-5'-PHOSPHATE (three-letter code: PLP) (formula: $C_8H_{10}NO_6P$).



Mol	Chain	Residues	Atoms					ZeroOcc	AltConf
			Total	C	N	O	P		
2	A	1	Total 15	C 8	N 1	O 5	P 1	0	0
2	B	1	Total 15	C 8	N 1	O 5	P 1	0	0

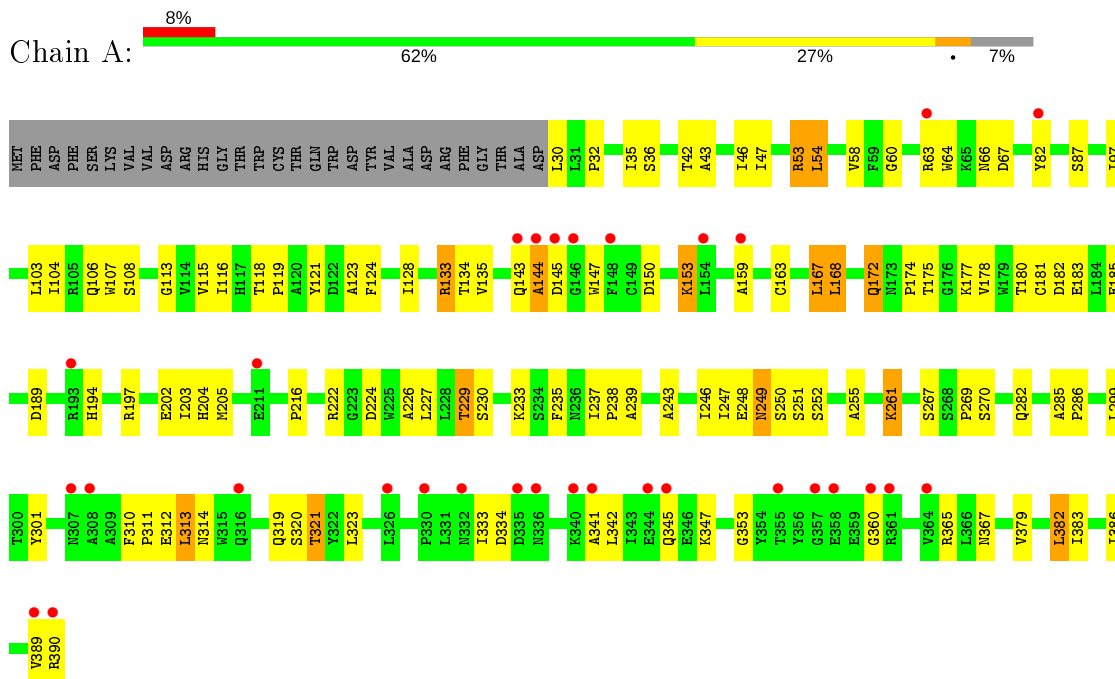
- Molecule 3 is water.

Mol	Chain	Residues	Atoms		ZeroOcc	AltConf
3	A	35	Total 35	O 35	0	0
3	B	132	Total 132	O 132	0	0

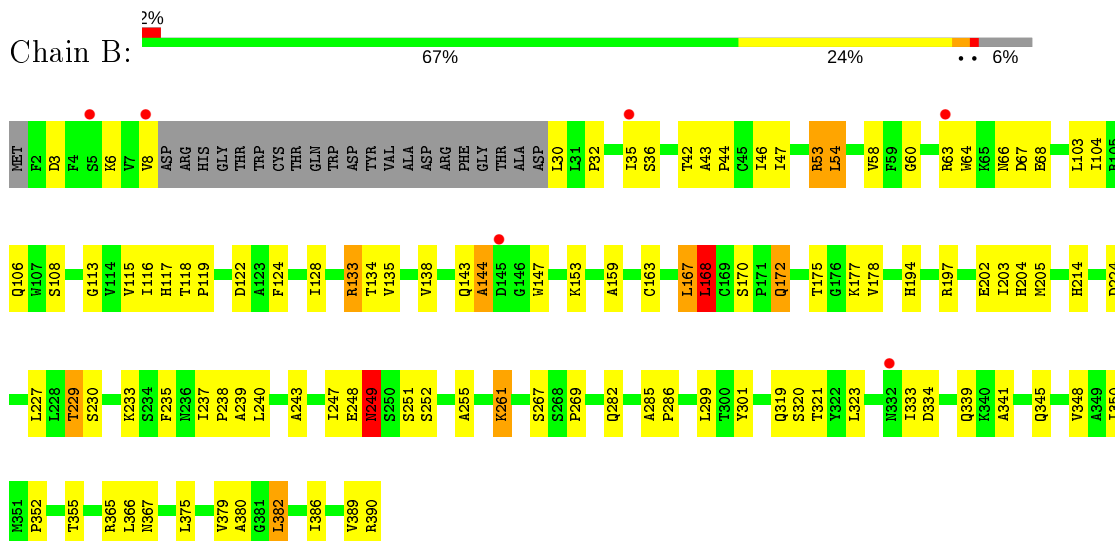
3 Residue-property plots i

These plots are drawn for all protein, RNA and DNA chains in the entry. The first graphic for a chain summarises the proportions of the various outlier classes displayed in the second graphic. The second graphic shows the sequence view annotated by issues in geometry and electron density. Residues are color-coded according to the number of geometric quality criteria for which they contain at least one outlier: green = 0, yellow = 1, orange = 2 and red = 3 or more. A red dot above a residue indicates a poor fit to the electron density ($RSRZ > 2$). Stretches of 2 or more consecutive residues without any outlier are shown as a green connector. Residues present in the sample, but not in the model, are shown in grey.

- Molecule 1: MALY PROTEIN



- Molecule 1: MALY PROTEIN



4 Data and refinement statistics

Property	Value	Source
Space group	C 2 2 21	Depositor
Cell constants a, b, c, α , β , γ	57.51Å 107.19Å 256.40Å 90.00° 90.00° 90.00°	Depositor
Resolution (Å)	20.00 – 2.50 19.88 – 2.50	Depositor EDS
% Data completeness (in resolution range)	94.9 (20.00-2.50) 85.4 (19.88-2.50)	Depositor EDS
R_{merge}	0.08	Depositor
R_{sym}	(Not available)	Depositor
$\langle I/\sigma(I) \rangle$ ¹	2.82 (at 2.50Å)	Xtrriage
Refinement program	X-PLOR 3.851	Depositor
R, R_{free}	0.201 , 0.262 0.192 , 0.249	Depositor DCC
R_{free} test set	1155 reflections (4.85%)	wwPDB-VP
Wilson B-factor (Å ²)	41.0	Xtrriage
Anisotropy	0.419	Xtrriage
Bulk solvent k_{sol} (e/Å ³), B_{sol} (Å ²)	0.31 , 61.0	EDS
L-test for twinning ²	$\langle L \rangle = 0.49$, $\langle L^2 \rangle = 0.32$	Xtrriage
Estimated twinning fraction	No twinning to report.	Xtrriage
F_o, F_c correlation	0.94	EDS
Total number of atoms	5914	wwPDB-VP
Average B, all atoms (Å ²)	47.0	wwPDB-VP

Xtrriage's analysis on translational NCS is as follows: *The largest off-origin peak in the Patterson function is 3.54% of the height of the origin peak. No significant pseudotranslation is detected.*

¹Intensities estimated from amplitudes.

²Theoretical values of $\langle |L| \rangle$, $\langle L^2 \rangle$ for acentric reflections are 0.5, 0.333 respectively for untwinned datasets, and 0.375, 0.2 for perfectly twinned datasets.

5 Model quality [i](#)

5.1 Standard geometry [i](#)

Bond lengths and bond angles in the following residue types are not validated in this section: PLP

The Z score for a bond length (or angle) is the number of standard deviations the observed value is removed from the expected value. A bond length (or angle) with $|Z| > 5$ is considered an outlier worth inspection. RMSZ is the root-mean-square of all Z scores of the bond lengths (or angles).

Mol	Chain	Bond lengths		Bond angles	
		RMSZ	# Z >5	RMSZ	# Z >5
1	A	0.35	0/2900	0.67	1/3945 (0.0%)
1	B	0.41	0/2960	0.66	2/4024 (0.0%)
All	All	0.38	0/5860	0.67	3/7969 (0.0%)

There are no bond length outliers.

All (3) bond angle outliers are listed below:

Mol	Chain	Res	Type	Atoms	Z	Observed(°)	Ideal(°)
1	B	249	ASN	N-CA-C	-6.64	93.08	111.00
1	A	145	ASP	CB-CA-C	6.33	123.05	110.40
1	B	168	LEU	CA-CB-CG	5.06	126.93	115.30

There are no chirality outliers.

There are no planarity outliers.

5.2 Too-close contacts [i](#)

In the following table, the Non-H and H(model) columns list the number of non-hydrogen atoms and hydrogen atoms in the chain respectively. The H(added) column lists the number of hydrogen atoms added and optimized by MolProbity. The Clashes column lists the number of clashes within the asymmetric unit, whereas Symm-Clashes lists symmetry related clashes.

Mol	Chain	Non-H	H(model)	H(added)	Clashes	Symm-Clashes
1	A	2829	0	2782	92	0
1	B	2888	0	2839	88	0
2	A	15	0	6	1	0
2	B	15	0	6	1	0
3	A	35	0	0	5	0
3	B	132	0	0	11	0

Continued on next page...

Continued from previous page...

Mol	Chain	Non-H	H(model)	H(added)	Clashes	Symm-Clashes
All	All	5914	0	5633	176	0

The all-atom clashscore is defined as the number of clashes found per 1000 atoms (including hydrogen atoms). The all-atom clashscore for this structure is 15.

All (176) close contacts within the same asymmetric unit are listed below, sorted by their clash magnitude.

Atom-1	Atom-2	Interatomic distance (Å)	Clash overlap (Å)
1:A:321:THR:HG22	1:A:323:LEU:H	1.24	0.99
1:B:321:THR:HG22	1:B:323:LEU:H	1.28	0.98
1:B:320:SER:O	1:B:321:THR:HB	1.72	0.88
1:A:320:SER:O	1:A:321:THR:HB	1.73	0.87
1:B:42:THR:HG22	1:B:43:ALA:H	1.41	0.84
1:A:321:THR:CG2	1:A:323:LEU:H	1.90	0.83
1:B:321:THR:CG2	1:B:323:LEU:H	1.91	0.82
1:A:42:THR:HG22	1:A:43:ALA:H	1.47	0.79
1:A:282:GLN:HA	1:A:282:GLN:HE21	1.50	0.77
1:B:282:GLN:HE21	1:B:282:GLN:HA	1.48	0.76
1:B:122:ASP:HB3	3:B:414:HOH:O	1.86	0.76
1:B:323:LEU:HD22	1:B:365:ARG:HD3	1.70	0.72
1:B:301:TYR:HE2	1:B:379:VAL:HG21	1.55	0.72
1:A:313:LEU:O	1:A:313:LEU:HD12	1.92	0.69
1:B:42:THR:HG23	1:B:235:PHE:O	1.93	0.69
1:B:282:GLN:HA	1:B:282:GLN:NE2	2.09	0.68
1:A:147:TRP:O	1:A:177:LYS:HE2	1.93	0.67
1:A:282:GLN:NE2	1:A:282:GLN:HA	2.08	0.67
1:B:42:THR:HG22	1:B:43:ALA:N	2.09	0.67
1:A:323:LEU:HD22	1:A:365:ARG:HD3	1.77	0.66
1:A:30:LEU:N	1:A:30:LEU:HD12	2.10	0.66
1:A:108:SER:OG	1:A:133:ARG:HD3	1.95	0.66
1:B:108:SER:OG	1:B:133:ARG:HD3	1.96	0.65
1:A:42:THR:HG23	1:A:235:PHE:O	1.97	0.65
1:A:42:THR:HG22	1:A:43:ALA:N	2.12	0.64
1:A:168:LEU:HA	3:A:420:HOH:O	1.97	0.63
1:A:87:SER:HB2	3:A:408:HOH:O	1.98	0.63
1:B:147:TRP:O	1:B:177:LYS:HE2	1.98	0.63
1:A:379:VAL:O	1:A:383:ILE:HG12	1.99	0.63
1:B:261:LYS:HB2	1:B:267:SER:HB3	1.80	0.63
1:A:310:PHE:O	1:A:313:LEU:HG	1.99	0.62
1:A:261:LYS:HB2	1:A:267:SER:HB3	1.82	0.61
1:A:227:LEU:HD11	3:A:435:HOH:O	2.00	0.61

Continued on next page...

Continued from previous page...

Atom-1	Atom-2	Interatomic distance (Å)	Clash overlap (Å)
1:B:143:GLN:O	1:B:144:ALA:C	2.39	0.61
1:A:116:ILE:HG22	1:A:167:LEU:HB3	1.83	0.61
1:A:202:GLU:O	1:A:205:MET:HG2	2.03	0.59
1:B:202:GLU:O	1:B:205:MET:HG2	2.02	0.59
1:A:181:CYS:O	1:A:185:GLU:HG2	2.03	0.59
1:B:172:GLN:HE22	1:B:175:THR:H	1.52	0.57
1:B:249:ASN:HD21	1:B:251:SER:HB2	1.69	0.57
1:B:68:GLU:HG3	3:B:473:HOH:O	2.04	0.57
1:B:116:ILE:HG22	1:B:167:LEU:HB3	1.87	0.57
1:B:204:HIS:HE1	2:B:400:PLP:O3	1.87	0.57
1:B:382:LEU:HD22	1:B:386:ILE:HD11	1.87	0.57
1:B:282:GLN:CA	1:B:282:GLN:HE21	2.12	0.57
1:A:321:THR:HG22	1:A:323:LEU:N	2.08	0.56
1:A:197:ARG:HD3	1:A:224:ASP:HB3	1.88	0.56
1:A:347:LYS:NZ	1:A:347:LYS:HB2	2.21	0.56
1:A:249:ASN:O	1:A:251:SER:N	2.38	0.56
1:B:204:HIS:HD2	3:B:415:HOH:O	1.87	0.56
1:B:339:GLN:NE2	3:B:440:HOH:O	2.37	0.56
1:B:285:ALA:HB3	1:B:286:PRO:HD3	1.88	0.56
1:A:216:PRO:HB3	3:A:435:HOH:O	2.06	0.56
1:A:248:GLU:OE1	1:A:248:GLU:HA	2.05	0.55
1:A:172:GLN:HE22	1:A:175:THR:H	1.53	0.55
1:A:249:ASN:O	1:A:252:SER:N	2.38	0.55
1:A:285:ALA:HB3	1:A:286:PRO:HD3	1.88	0.55
1:B:30:LEU:O	1:B:32:PRO:HD3	2.06	0.55
1:A:60:GLY:O	1:B:239:ALA:HB2	2.07	0.54
1:A:333:ILE:HG12	1:A:334:ASP:N	2.23	0.54
1:A:311:PRO:C	1:A:313:LEU:H	2.10	0.54
1:B:249:ASN:ND2	1:B:251:SER:HB2	2.21	0.54
1:B:197:ARG:NH1	1:B:224:ASP:OD2	2.41	0.54
1:A:103:LEU:HD21	1:A:247:ILE:HD13	1.89	0.54
1:B:3:ASP:HA	3:B:480:HOH:O	2.08	0.54
1:A:53:ARG:NH2	1:A:58:VAL:O	2.36	0.53
1:B:103:LEU:HD21	1:B:247:ILE:HD13	1.90	0.53
1:A:282:GLN:CA	1:A:282:GLN:HE21	2.11	0.53
1:A:333:ILE:HG13	1:A:389:VAL:HG23	1.91	0.53
1:A:239:ALA:HB2	1:B:60:GLY:O	2.09	0.52
1:B:113:GLY:HA2	1:B:134:THR:O	2.09	0.52
1:A:224:ASP:OD1	1:A:249:ASN:HB3	2.09	0.52
1:B:248:GLU:O	1:B:249:ASN:HB3	2.09	0.52
1:B:177:LYS:HA	1:B:319:GLN:HE21	1.74	0.52

Continued on next page...

Continued from previous page...

Atom-1	Atom-2	Interatomic distance (Å)	Clash overlap (Å)
1:B:333:ILE:HG13	1:B:389:VAL:HG23	1.91	0.52
1:A:124:PHE:O	1:A:128:ILE:HG13	2.10	0.51
1:A:321:THR:HG21	1:A:323:LEU:HB2	1.92	0.51
1:B:178:VAL:H	1:B:319:GLN:NE2	2.07	0.51
1:B:248:GLU:OE1	1:B:248:GLU:HA	2.10	0.51
1:B:301:TYR:CE2	1:B:379:VAL:HG21	2.40	0.51
1:A:197:ARG:HG3	1:A:197:ARG:HH11	1.76	0.51
1:A:382:LEU:O	1:A:386:ILE:HG13	2.11	0.51
1:B:333:ILE:HG12	1:B:334:ASP:N	2.26	0.51
1:A:239:ALA:HA	3:B:444:HOH:O	2.10	0.51
1:B:6:LYS:NZ	1:B:8:VAL:HG22	2.26	0.51
1:A:64:TRP:C	1:A:66:ASN:H	2.15	0.50
1:B:53:ARG:NH2	1:B:58:VAL:O	2.40	0.50
1:A:159:ALA:HA	1:A:194:HIS:CD2	2.47	0.50
1:A:205:MET:SD	1:A:229:THR:HG21	2.51	0.50
1:B:205:MET:SD	1:B:229:THR:HG21	2.52	0.50
1:A:321:THR:CG2	1:A:323:LEU:HB2	2.42	0.50
1:A:180:THR:OG1	1:A:183:GLU:HG3	2.12	0.49
1:B:106:GLN:NE2	1:B:255:ALA:HB3	2.27	0.49
1:B:321:THR:HG22	1:B:323:LEU:N	2.12	0.49
1:B:64:TRP:C	1:B:66:ASN:H	2.15	0.49
1:A:342:LEU:HD21	1:A:382:LEU:HA	1.95	0.48
1:B:321:THR:HG21	1:B:323:LEU:HB2	1.95	0.48
1:A:143:GLN:O	1:A:144:ALA:C	2.50	0.48
1:A:177:LYS:NZ	1:A:183:GLU:OE2	2.45	0.48
1:A:113:GLY:HA2	1:A:134:THR:O	2.12	0.48
1:A:118:THR:HA	1:A:119:PRO:C	2.35	0.48
1:B:382:LEU:O	1:B:386:ILE:HG13	2.13	0.48
1:B:42:THR:CG2	1:B:43:ALA:H	2.20	0.47
1:A:204:HIS:HE1	2:A:400:PLP:O3	1.97	0.47
1:A:282:GLN:NE2	1:A:282:GLN:CA	2.74	0.47
1:A:177:LYS:HA	1:A:319:GLN:HE21	1.78	0.47
1:B:115:VAL:HG23	1:B:163:CYS:SG	2.54	0.47
1:A:104:ILE:CG2	1:A:133:ARG:HD2	2.44	0.47
1:B:321:THR:CG2	1:B:323:LEU:HB2	2.45	0.46
1:A:178:VAL:H	1:A:319:GLN:NE2	2.12	0.46
1:B:104:ILE:CG2	1:B:133:ARG:HD2	2.44	0.46
1:A:270:SER:HB2	3:A:432:HOH:O	2.14	0.46
1:A:42:THR:CG2	1:A:43:ALA:H	2.25	0.46
1:B:118:THR:HA	1:B:119:PRO:C	2.36	0.46
1:B:124:PHE:O	1:B:128:ILE:HG13	2.15	0.46

Continued on next page...

Continued from previous page...

Atom-1	Atom-2	Interatomic distance (Å)	Clash overlap (Å)
1:B:214:HIS:HD2	3:B:482:HOH:O	1.96	0.46
1:A:107:TRP:CD2	1:A:197:ARG:HD2	2.51	0.46
1:B:159:ALA:HA	1:B:194:HIS:CD2	2.50	0.46
1:A:203:ILE:HA	1:A:229:THR:HG22	1.99	0.45
1:B:248:GLU:O	1:B:249:ASN:CB	2.64	0.45
1:B:390:ARG:HH11	1:B:390:ARG:HG3	1.81	0.45
1:B:42:THR:CG2	1:B:43:ALA:N	2.79	0.45
1:B:204:HIS:CD2	3:B:415:HOH:O	2.67	0.45
1:B:366:LEU:C	1:B:366:LEU:HD23	2.37	0.45
1:A:237:ILE:N	1:A:238:PRO:CD	2.80	0.45
1:A:321:THR:CG2	1:A:323:LEU:N	2.71	0.45
1:A:150:ASP:OD2	1:A:153:LYS:HB2	2.16	0.45
1:B:375:LEU:O	1:B:379:VAL:HG22	2.17	0.45
1:A:30:LEU:O	1:A:32:PRO:HD3	2.18	0.44
1:B:237:ILE:N	1:B:238:PRO:CD	2.81	0.44
1:A:230:SER:HB2	1:A:243:ALA:HA	2.00	0.44
1:B:323:LEU:HD22	1:B:365:ARG:CD	2.44	0.44
1:A:42:THR:HG22	1:A:46:ILE:HD12	1.99	0.44
1:A:97:ILE:HG21	3:B:469:HOH:O	2.17	0.44
1:A:323:LEU:HD22	1:A:365:ARG:CD	2.47	0.44
1:B:249:ASN:HD22	1:B:252:SER:H	1.66	0.44
1:A:107:TRP:CG	1:A:197:ARG:HD2	2.53	0.44
1:B:214:HIS:CD2	3:B:482:HOH:O	2.71	0.43
1:A:189:ASP:HA	1:A:222:ARG:NH1	2.33	0.43
1:A:341:ALA:O	1:A:345:GLN:HB3	2.17	0.43
1:B:261:LYS:HE3	1:B:261:LYS:HB3	1.77	0.43
1:B:203:ILE:HA	1:B:229:THR:HG22	2.00	0.43
1:B:224:ASP:OD1	1:B:249:ASN:HB3	2.17	0.43
1:B:168:LEU:HD13	1:B:170:SER:HB2	2.00	0.43
1:A:30:LEU:N	1:A:30:LEU:CD1	2.79	0.43
1:A:106:GLN:NE2	1:A:255:ALA:HB3	2.33	0.43
1:B:352:PRO:O	1:B:355:THR:HG23	2.19	0.43
1:A:115:VAL:HG23	1:A:163:CYS:SG	2.59	0.42
1:A:249:ASN:C	1:A:251:SER:N	2.73	0.42
1:A:202:GLU:C	1:A:229:THR:HG23	2.40	0.42
1:A:54:LEU:CD1	1:B:47:ILE:HG23	2.49	0.42
1:A:185:GLU:O	1:A:189:ASP:HB2	2.20	0.42
1:A:390:ARG:HG3	1:A:390:ARG:HH11	1.84	0.42
1:B:44:PRO:HG2	3:B:526:HOH:O	2.19	0.42
1:B:42:THR:HG22	1:B:46:ILE:HD12	2.00	0.42
1:A:47:ILE:HG23	1:B:54:LEU:CD1	2.50	0.41

Continued on next page...

Continued from previous page...

Atom-1	Atom-2	Interatomic distance (Å)	Clash overlap (Å)
1:B:227:LEU:C	1:B:227:LEU:HD23	2.40	0.41
1:A:197:ARG:HG3	1:A:197:ARG:NH1	2.35	0.41
1:B:224:ASP:OD1	1:B:249:ASN:CB	2.68	0.41
1:A:203:ILE:HA	1:A:229:THR:CG2	2.50	0.41
1:B:203:ILE:HA	1:B:229:THR:CG2	2.50	0.41
1:B:382:LEU:HD22	1:B:386:ILE:CD1	2.50	0.41
1:A:301:TYR:HE2	1:A:379:VAL:HG21	1.86	0.41
1:A:35:ILE:O	1:A:367:ASN:ND2	2.53	0.41
1:B:117:HIS:HA	1:B:138:VAL:O	2.21	0.41
1:B:172:GLN:NE2	1:B:175:THR:H	2.17	0.41
1:B:341:ALA:O	1:B:345:GLN:HB3	2.20	0.41
1:B:379:VAL:HG23	1:B:380:ALA:H	1.85	0.41
1:A:353:GLY:O	1:A:360:GLY:HA3	2.21	0.41
1:A:226:ALA:HA	1:A:246:ILE:O	2.21	0.40
1:B:348:VAL:HG12	1:B:350:ILE:HG13	2.02	0.40
1:B:6:LYS:HZ1	1:B:8:VAL:HG22	1.85	0.40
1:A:180:THR:C	1:A:182:ASP:N	2.74	0.40
1:A:121:TYR:CE2	1:A:123:ALA:HB3	2.56	0.40
1:B:35:ILE:O	1:B:367:ASN:ND2	2.54	0.40
1:B:230:SER:HB2	1:B:243:ALA:HA	2.03	0.40

There are no symmetry-related clashes.

5.3 Torsion angles [i](#)

5.3.1 Protein backbone [i](#)

In the following table, the Percentiles column shows the percent Ramachandran outliers of the chain as a percentile score with respect to all X-ray entries followed by that with respect to entries of similar resolution.

The Analysed column shows the number of residues for which the backbone conformation was analysed, and the total number of residues.

Mol	Chain	Analysed	Favoured	Allowed	Outliers	Percentiles
1	A	359/390 (92%)	334 (93%)	18 (5%)	7 (2%)	8 13
1	B	364/390 (93%)	349 (96%)	12 (3%)	3 (1%)	19 35
All	All	723/780 (93%)	683 (94%)	30 (4%)	10 (1%)	11 20

All (10) Ramachandran outliers are listed below:

Mol	Chain	Res	Type
1	A	144	ALA
1	A	250	SER
1	B	144	ALA
1	A	249	ASN
1	B	36	SER
1	B	249	ASN
1	A	36	SER
1	A	312	GLU
1	A	313	LEU
1	A	321	THR

5.3.2 Protein sidechains [i](#)

In the following table, the Percentiles column shows the percent sidechain outliers of the chain as a percentile score with respect to all X-ray entries followed by that with respect to entries of similar resolution.

The Analysed column shows the number of residues for which the sidechain conformation was analysed, and the total number of residues.

Mol	Chain	Analysed	Rotameric	Outliers	Percentiles	
1	A	298/323 (92%)	279 (94%)	19 (6%)	17	33
1	B	305/323 (94%)	288 (94%)	17 (6%)	21	40
All	All	603/646 (93%)	567 (94%)	36 (6%)	19	37

All (36) residues with a non-rotameric sidechain are listed below:

Mol	Chain	Res	Type
1	A	53	ARG
1	A	54	LEU
1	A	63	ARG
1	A	67	ASP
1	A	82	TYR
1	A	133	ARG
1	A	135	VAL
1	A	153	LYS
1	A	167	LEU
1	A	168	LEU
1	A	172	GLN
1	A	174	PRO
1	A	229	THR
1	A	233	LYS

Continued on next page...

Continued from previous page...

Mol	Chain	Res	Type
1	A	261	LYS
1	A	269	PRO
1	A	299	LEU
1	A	314	ASN
1	A	382	LEU
1	B	53	ARG
1	B	54	LEU
1	B	63	ARG
1	B	67	ASP
1	B	133	ARG
1	B	135	VAL
1	B	153	LYS
1	B	167	LEU
1	B	168	LEU
1	B	172	GLN
1	B	229	THR
1	B	233	LYS
1	B	240	LEU
1	B	261	LYS
1	B	269	PRO
1	B	299	LEU
1	B	382	LEU

Some sidechains can be flipped to improve hydrogen bonding and reduce clashes. All (21) such sidechains are listed below:

Mol	Chain	Res	Type
1	A	106	GLN
1	A	172	GLN
1	A	204	HIS
1	A	212	GLN
1	A	219	ASN
1	A	249	ASN
1	A	282	GLN
1	A	314	ASN
1	A	319	GLN
1	B	75	HIS
1	B	81	HIS
1	B	106	GLN
1	B	172	GLN
1	B	204	HIS
1	B	212	GLN
1	B	214	HIS

Continued on next page...

Continued from previous page...

Mol	Chain	Res	Type
1	B	249	ASN
1	B	282	GLN
1	B	314	ASN
1	B	319	GLN
1	B	384	ASN

5.3.3 RNA [i](#)

There are no RNA molecules in this entry.

5.4 Non-standard residues in protein, DNA, RNA chains [i](#)

There are no non-standard protein/DNA/RNA residues in this entry.

5.5 Carbohydrates [i](#)

There are no carbohydrates in this entry.

5.6 Ligand geometry [i](#)

2 ligands are modelled in this entry.

In the following table, the Counts columns list the number of bonds (or angles) for which Mogul statistics could be retrieved, the number of bonds (or angles) that are observed in the model and the number of bonds (or angles) that are defined in the Chemical Component Dictionary. The Link column lists molecule types, if any, to which the group is linked. The Z score for a bond length (or angle) is the number of standard deviations the observed value is removed from the expected value. A bond length (or angle) with $|Z| > 2$ is considered an outlier worth inspection. RMSZ is the root-mean-square of all Z scores of the bond lengths (or angles).

Mol	Type	Chain	Res	Link	Bond lengths			Bond angles		
					Counts	RMSZ	# Z > 2	Counts	RMSZ	# Z > 2
2	PLP	B	400	1	15,15,16	3.70	5 (33%)	20,22,23	2.86	11 (55%)
2	PLP	A	400	1	15,15,16	3.51	3 (20%)	20,22,23	2.72	11 (55%)

In the following table, the Chirals column lists the number of chiral outliers, the number of chiral centers analysed, the number of these observed in the model and the number defined in the Chemical Component Dictionary. Similar counts are reported in the Torsion and Rings columns. '·' means no outliers of that kind were identified.

Mol	Type	Chain	Res	Link	Chirals	Torsions	Rings
2	PLP	B	400	1	-	1/6/6/8	0/1/1/1
2	PLP	A	400	1	-	1/6/6/8	0/1/1/1

All (8) bond length outliers are listed below:

Mol	Chain	Res	Type	Atoms	Z	Observed(Å)	Ideal(Å)
2	B	400	PLP	C5-C4	10.41	1.52	1.40
2	A	400	PLP	C5-C4	9.68	1.51	1.40
2	A	400	PLP	C3-C2	8.43	1.49	1.40
2	B	400	PLP	C3-C2	8.15	1.49	1.40
2	B	400	PLP	C2-N1	3.59	1.40	1.33
2	A	400	PLP	C2-N1	3.18	1.39	1.33
2	B	400	PLP	C4A-C4	-2.49	1.46	1.51
2	B	400	PLP	O4P-C5A	-2.16	1.36	1.45

All (22) bond angle outliers are listed below:

Mol	Chain	Res	Type	Atoms	Z	Observed($^{\circ}$)	Ideal($^{\circ}$)
2	A	400	PLP	C2A-C2-C3	7.05	129.60	120.89
2	B	400	PLP	C2A-C2-C3	6.67	129.13	120.89
2	B	400	PLP	C6-C5-C4	4.33	121.57	118.16
2	B	400	PLP	C6-N1-C2	3.90	126.38	119.17
2	A	400	PLP	C6-C5-C4	3.77	121.13	118.16
2	A	400	PLP	C6-N1-C2	3.66	125.94	119.17
2	B	400	PLP	C5-C6-N1	-3.59	117.84	123.82
2	B	400	PLP	O3P-P-O2P	3.36	120.47	107.64
2	B	400	PLP	O3P-P-O4P	-3.31	97.92	106.73
2	A	400	PLP	C3-C2-N1	-3.26	116.55	120.77
2	B	400	PLP	O3-C3-C4	3.11	126.30	118.10
2	A	400	PLP	C5-C6-N1	-3.08	118.69	123.82
2	A	400	PLP	O3-C3-C4	3.05	126.12	118.10
2	B	400	PLP	O3P-P-O1P	2.98	122.33	110.68
2	A	400	PLP	O3P-P-O1P	2.92	122.10	110.68
2	B	400	PLP	C3-C2-N1	-2.83	117.12	120.77
2	A	400	PLP	O4P-P-O1P	-2.42	99.67	106.47
2	B	400	PLP	O4P-P-O1P	-2.38	99.79	106.47
2	A	400	PLP	O4P-C5A-C5	2.38	113.89	109.35
2	A	400	PLP	O3P-P-O4P	-2.16	100.99	106.73
2	A	400	PLP	C4A-C4-C5	2.05	123.05	120.94
2	B	400	PLP	C2A-C2-N1	-2.01	113.75	117.67

There are no chirality outliers.

All (2) torsion outliers are listed below:

Mol	Chain	Res	Type	Atoms
2	B	400	PLP	C6-C5-C5A-O4P
2	A	400	PLP	C4-C5-C5A-O4P

There are no ring outliers.

2 monomers are involved in 2 short contacts:

Mol	Chain	Res	Type	Clashes	Symm-Clashes
2	B	400	PLP	1	0
2	A	400	PLP	1	0

5.7 Other polymers [i](#)

There are no such residues in this entry.

5.8 Polymer linkage issues [i](#)

There are no chain breaks in this entry.

6 Fit of model and data

6.1 Protein, DNA and RNA chains

In the following table, the column labelled ‘#RSRZ> 2’ contains the number (and percentage) of RSRZ outliers, followed by percent RSRZ outliers for the chain as percentile scores relative to all X-ray entries and entries of similar resolution. The OWAB column contains the minimum, median, 95th percentile and maximum values of the occupancy-weighted average B-factor per residue. The column labelled ‘Q< 0.9’ lists the number of (and percentage) of residues with an average occupancy less than 0.9.

Mol	Chain	Analysed	<RSRZ>	#RSRZ>2	OWAB(Å ²)	Q<0.9
1	A	361/390 (92%)	0.37	31 (8%) 10 10	31, 61, 96, 100	0
1	B	368/390 (94%)	-0.35	6 (1%) 72 74	13, 30, 58, 69	0
All	All	729/780 (93%)	0.01	37 (5%) 28 29	13, 42, 88, 100	0

All (37) RSRZ outliers are listed below:

Mol	Chain	Res	Type	RSRZ
1	A	361	ARG	6.1
1	A	345	GLN	4.8
1	A	144	ALA	4.7
1	A	336	ASN	4.3
1	A	145	ASP	4.2
1	A	330	PRO	3.9
1	A	82	TYR	3.8
1	A	211	GLU	3.6
1	A	146	GLY	3.5
1	A	358	GLU	3.3
1	B	35	ILE	3.3
1	A	332	ASN	3.2
1	A	390	ARG	3.2
1	A	159	ALA	3.1
1	A	344	GLU	3.1
1	A	63	ARG	3.1
1	A	154	LEU	3.1
1	A	341	ALA	3.1
1	A	308	ALA	2.9
1	A	355	THR	2.8
1	A	357	GLY	2.8
1	A	307	ASN	2.8
1	B	8	VAL	2.7
1	A	340	LYS	2.7

Continued on next page...

Continued from previous page...

Mol	Chain	Res	Type	RSRZ
1	B	332	ASN	2.6
1	B	5	SER	2.5
1	A	364	VAL	2.5
1	A	316	GLN	2.4
1	A	335	ASP	2.4
1	A	143	GLN	2.3
1	A	326	LEU	2.3
1	A	389	VAL	2.2
1	B	145	ASP	2.1
1	A	360	GLY	2.1
1	A	193	ARG	2.1
1	B	63	ARG	2.1
1	A	148	PHE	2.0

6.2 Non-standard residues in protein, DNA, RNA chains [i](#)

There are no non-standard protein/DNA/RNA residues in this entry.

6.3 Carbohydrates [i](#)

There are no carbohydrates in this entry.

6.4 Ligands [i](#)

In the following table, the Atoms column lists the number of modelled atoms in the group and the number defined in the chemical component dictionary. The B-factors column lists the minimum, median, 95th percentile and maximum values of B factors of atoms in the group. The column labelled 'Q< 0.9' lists the number of atoms with occupancy less than 0.9.

Mol	Type	Chain	Res	Atoms	RSCC	RSR	B-factors(Å ²)	Q<0.9
2	PLP	A	400	15/16	0.91	0.14	41,52,55,56	0
2	PLP	B	400	15/16	0.92	0.12	17,21,39,50	0

6.5 Other polymers [i](#)

There are no such residues in this entry.