



Full wwPDB X-ray Structure Validation Report ⓘ

Dec 17, 2023 – 03:18 am GMT

PDB ID : 4D41
Title : Crystal structure of S. aureus FabI in complex with NADP and 5-hexyl- 2-(4-nitrophenoxy)phenol
Authors : Schiebel, J.; Chang, A.; Tonge, P.J.; Sotriffer, C.A.; Kisker, C.
Deposited on : 2014-10-26
Resolution : 2.30 Å(reported)

This is a Full wwPDB X-ray Structure Validation Report for a publicly released PDB entry.

We welcome your comments at validation@mail.wwpdb.org

A user guide is available at

<https://www.wwpdb.org/validation/2017/XrayValidationReportHelp>

with specific help available everywhere you see the ⓘ symbol.

The types of validation reports are described at

<http://www.wwpdb.org/validation/2017/FAQs#types>.

The following versions of software and data (see [references ⓘ](#)) were used in the production of this report:

MolProbity : 4.02b-467
Mogul : 1.8.4, CSD as541be (2020)
Xtriage (Phenix) : 1.13
EDS : 2.36
buster-report : 1.1.7 (2018)
Percentile statistics : 20191225.v01 (using entries in the PDB archive December 25th 2019)
Refmac : 5.8.0158
CCP4 : 7.0.044 (Gargrove)
Ideal geometry (proteins) : Engh & Huber (2001)
Ideal geometry (DNA, RNA) : Parkinson et al. (1996)
Validation Pipeline (wwPDB-VP) : 2.36

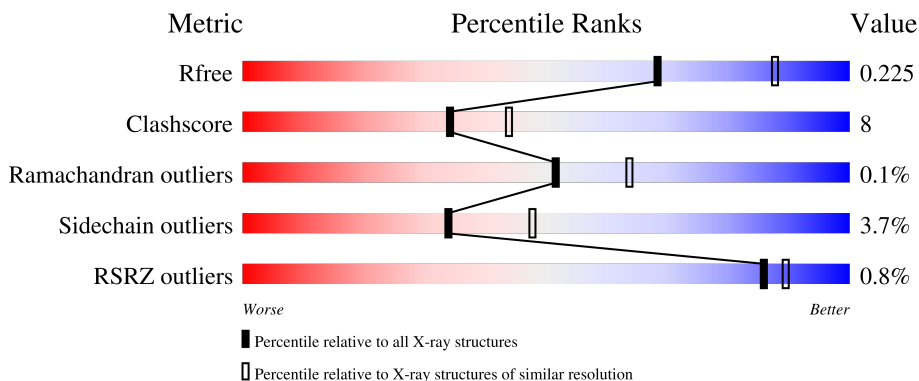
1 Overall quality at a glance i

The following experimental techniques were used to determine the structure:

X-RAY DIFFRACTION

The reported resolution of this entry is 2.30 Å.

Percentile scores (ranging between 0-100) for global validation metrics of the entry are shown in the following graphic. The table shows the number of entries on which the scores are based.



Metric	Whole archive (#Entries)	Similar resolution (#Entries, resolution range(Å))
R_{free}	130704	5042 (2.30-2.30)
Clashscore	141614	5643 (2.30-2.30)
Ramachandran outliers	138981	5575 (2.30-2.30)
Sidechain outliers	138945	5575 (2.30-2.30)
RSRZ outliers	127900	4938 (2.30-2.30)

The table below summarises the geometric issues observed across the polymeric chains and their fit to the electron density. The red, orange, yellow and green segments of the lower bar indicate the fraction of residues that contain outliers for ≥ 3 , 2, 1 and 0 types of geometric quality criteria respectively. A grey segment represents the fraction of residues that are not modelled. The numeric value for each fraction is indicated below the corresponding segment, with a dot representing fractions $\leq 5\%$. The upper red bar (where present) indicates the fraction of residues that have poor fit to the electron density. The numeric value is given above the bar.

Mol	Chain	Length	Quality of chain
1	A	282	75% 15% 10%
1	B	282	77% 12% 10%
1	C	282	2% 70% 18% 10%
1	D	282	2% 77% 12% 10%
1	E	282	75% 15% 10%

Continued on next page...

Continued from previous page...

Mol	Chain	Length	Quality of chain
1	F	282	<p>%</p> <p>76% 14% • 10%</p>
1	G	282	<p>75% 14% • 10%</p>
1	H	282	<p>%</p> <p>72% 17% • 10%</p>

The following table lists non-polymeric compounds, carbohydrate monomers and non-standard residues in protein, DNA, RNA chains that are outliers for geometric or electron-density-fit criteria:

Mol	Type	Chain	Res	Chirality	Geometry	Clashes	Electron density
2	MPD	E	1260	-	-	X	-
2	MPD	H	1258	-	-	X	-
5	GLU	F	1257	-	-	-	X
5	GLU	G	1258	-	-	X	-

2 Entry composition [i](#)

There are 7 unique types of molecules in this entry. The entry contains 17716 atoms, of which 0 are hydrogens and 0 are deuteriums.

In the tables below, the ZeroOcc column contains the number of atoms modelled with zero occupancy, the AltConf column contains the number of residues with at least one atom in alternate conformation and the Trace column contains the number of residues modelled with at most 2 atoms.

- Molecule 1 is a protein called ENOYL-[ACYL-CARRIER-PROTEIN] REDUCTASE [NADPH].

Mol	Chain	Residues	Atoms					ZeroOcc	AltConf	Trace
			Total	C	N	O	S			
1	A	254	Total 1985	C 1250	N 343	O 388	S 4	0	5	0
1	B	254	Total 1963	C 1237	N 341	O 381	S 4	0	1	0
1	C	254	Total 2046	C 1285	N 359	O 397	S 5	0	12	0
1	D	254	Total 2033	C 1279	N 353	O 397	S 4	0	11	0
1	E	254	Total 1983	C 1250	N 344	O 385	S 4	0	4	0
1	F	254	Total 2024	C 1271	N 353	O 395	S 5	0	9	0
1	G	255	Total 2045	C 1285	N 357	O 398	S 5	0	11	0
1	H	254	Total 2026	C 1274	N 351	O 396	S 5	0	9	0

There are 216 discrepancies between the modelled and reference sequences:

Chain	Residue	Modelled	Actual	Comment	Reference
A	-25	MET	-	expression tag	UNP Q7A6D8
A	-24	LYS	-	expression tag	UNP Q7A6D8
A	-23	HIS	-	expression tag	UNP Q7A6D8
A	-22	HIS	-	expression tag	UNP Q7A6D8
A	-21	HIS	-	expression tag	UNP Q7A6D8
A	-20	HIS	-	expression tag	UNP Q7A6D8
A	-19	HIS	-	expression tag	UNP Q7A6D8
A	-18	HIS	-	expression tag	UNP Q7A6D8
A	-17	PRO	-	expression tag	UNP Q7A6D8
A	-16	MET	-	expression tag	UNP Q7A6D8
A	-15	SER	-	expression tag	UNP Q7A6D8
A	-14	ASP	-	expression tag	UNP Q7A6D8

Continued on next page...

Continued from previous page...

Chain	Residue	Modelled	Actual	Comment	Reference
A	-13	TYR	-	expression tag	UNP Q7A6D8
A	-12	ASP	-	expression tag	UNP Q7A6D8
A	-11	ILE	-	expression tag	UNP Q7A6D8
A	-10	PRO	-	expression tag	UNP Q7A6D8
A	-9	THR	-	expression tag	UNP Q7A6D8
A	-8	THR	-	expression tag	UNP Q7A6D8
A	-7	GLU	-	expression tag	UNP Q7A6D8
A	-6	ASN	-	expression tag	UNP Q7A6D8
A	-5	LEU	-	expression tag	UNP Q7A6D8
A	-4	TYR	-	expression tag	UNP Q7A6D8
A	-3	PHE	-	expression tag	UNP Q7A6D8
A	-2	GLN	-	expression tag	UNP Q7A6D8
A	-1	GLY	-	expression tag	UNP Q7A6D8
A	0	ALA	-	expression tag	UNP Q7A6D8
A	2	VAL	LEU	engineered mutation	UNP Q7A6D8
B	-25	MET	-	expression tag	UNP Q7A6D8
B	-24	LYS	-	expression tag	UNP Q7A6D8
B	-23	HIS	-	expression tag	UNP Q7A6D8
B	-22	HIS	-	expression tag	UNP Q7A6D8
B	-21	HIS	-	expression tag	UNP Q7A6D8
B	-20	HIS	-	expression tag	UNP Q7A6D8
B	-19	HIS	-	expression tag	UNP Q7A6D8
B	-18	HIS	-	expression tag	UNP Q7A6D8
B	-17	PRO	-	expression tag	UNP Q7A6D8
B	-16	MET	-	expression tag	UNP Q7A6D8
B	-15	SER	-	expression tag	UNP Q7A6D8
B	-14	ASP	-	expression tag	UNP Q7A6D8
B	-13	TYR	-	expression tag	UNP Q7A6D8
B	-12	ASP	-	expression tag	UNP Q7A6D8
B	-11	ILE	-	expression tag	UNP Q7A6D8
B	-10	PRO	-	expression tag	UNP Q7A6D8
B	-9	THR	-	expression tag	UNP Q7A6D8
B	-8	THR	-	expression tag	UNP Q7A6D8
B	-7	GLU	-	expression tag	UNP Q7A6D8
B	-6	ASN	-	expression tag	UNP Q7A6D8
B	-5	LEU	-	expression tag	UNP Q7A6D8
B	-4	TYR	-	expression tag	UNP Q7A6D8
B	-3	PHE	-	expression tag	UNP Q7A6D8
B	-2	GLN	-	expression tag	UNP Q7A6D8
B	-1	GLY	-	expression tag	UNP Q7A6D8
B	0	ALA	-	expression tag	UNP Q7A6D8
B	2	VAL	LEU	engineered mutation	UNP Q7A6D8

Continued on next page...

Continued from previous page...

Chain	Residue	Modelled	Actual	Comment	Reference
C	-25	MET	-	expression tag	UNP Q7A6D8
C	-24	LYS	-	expression tag	UNP Q7A6D8
C	-23	HIS	-	expression tag	UNP Q7A6D8
C	-22	HIS	-	expression tag	UNP Q7A6D8
C	-21	HIS	-	expression tag	UNP Q7A6D8
C	-20	HIS	-	expression tag	UNP Q7A6D8
C	-19	HIS	-	expression tag	UNP Q7A6D8
C	-18	HIS	-	expression tag	UNP Q7A6D8
C	-17	PRO	-	expression tag	UNP Q7A6D8
C	-16	MET	-	expression tag	UNP Q7A6D8
C	-15	SER	-	expression tag	UNP Q7A6D8
C	-14	ASP	-	expression tag	UNP Q7A6D8
C	-13	TYR	-	expression tag	UNP Q7A6D8
C	-12	ASP	-	expression tag	UNP Q7A6D8
C	-11	ILE	-	expression tag	UNP Q7A6D8
C	-10	PRO	-	expression tag	UNP Q7A6D8
C	-9	THR	-	expression tag	UNP Q7A6D8
C	-8	THR	-	expression tag	UNP Q7A6D8
C	-7	GLU	-	expression tag	UNP Q7A6D8
C	-6	ASN	-	expression tag	UNP Q7A6D8
C	-5	LEU	-	expression tag	UNP Q7A6D8
C	-4	TYR	-	expression tag	UNP Q7A6D8
C	-3	PHE	-	expression tag	UNP Q7A6D8
C	-2	GLN	-	expression tag	UNP Q7A6D8
C	-1	GLY	-	expression tag	UNP Q7A6D8
C	0	ALA	-	expression tag	UNP Q7A6D8
C	2	VAL	LEU	engineered mutation	UNP Q7A6D8
D	-25	MET	-	expression tag	UNP Q7A6D8
D	-24	LYS	-	expression tag	UNP Q7A6D8
D	-23	HIS	-	expression tag	UNP Q7A6D8
D	-22	HIS	-	expression tag	UNP Q7A6D8
D	-21	HIS	-	expression tag	UNP Q7A6D8
D	-20	HIS	-	expression tag	UNP Q7A6D8
D	-19	HIS	-	expression tag	UNP Q7A6D8
D	-18	HIS	-	expression tag	UNP Q7A6D8
D	-17	PRO	-	expression tag	UNP Q7A6D8
D	-16	MET	-	expression tag	UNP Q7A6D8
D	-15	SER	-	expression tag	UNP Q7A6D8
D	-14	ASP	-	expression tag	UNP Q7A6D8
D	-13	TYR	-	expression tag	UNP Q7A6D8
D	-12	ASP	-	expression tag	UNP Q7A6D8
D	-11	ILE	-	expression tag	UNP Q7A6D8

Continued on next page...

Continued from previous page...

Chain	Residue	Modelled	Actual	Comment	Reference
D	-10	PRO	-	expression tag	UNP Q7A6D8
D	-9	THR	-	expression tag	UNP Q7A6D8
D	-8	THR	-	expression tag	UNP Q7A6D8
D	-7	GLU	-	expression tag	UNP Q7A6D8
D	-6	ASN	-	expression tag	UNP Q7A6D8
D	-5	LEU	-	expression tag	UNP Q7A6D8
D	-4	TYR	-	expression tag	UNP Q7A6D8
D	-3	PHE	-	expression tag	UNP Q7A6D8
D	-2	GLN	-	expression tag	UNP Q7A6D8
D	-1	GLY	-	expression tag	UNP Q7A6D8
D	0	ALA	-	expression tag	UNP Q7A6D8
D	2	VAL	LEU	engineered mutation	UNP Q7A6D8
E	-25	MET	-	expression tag	UNP Q7A6D8
E	-24	LYS	-	expression tag	UNP Q7A6D8
E	-23	HIS	-	expression tag	UNP Q7A6D8
E	-22	HIS	-	expression tag	UNP Q7A6D8
E	-21	HIS	-	expression tag	UNP Q7A6D8
E	-20	HIS	-	expression tag	UNP Q7A6D8
E	-19	HIS	-	expression tag	UNP Q7A6D8
E	-18	HIS	-	expression tag	UNP Q7A6D8
E	-17	PRO	-	expression tag	UNP Q7A6D8
E	-16	MET	-	expression tag	UNP Q7A6D8
E	-15	SER	-	expression tag	UNP Q7A6D8
E	-14	ASP	-	expression tag	UNP Q7A6D8
E	-13	TYR	-	expression tag	UNP Q7A6D8
E	-12	ASP	-	expression tag	UNP Q7A6D8
E	-11	ILE	-	expression tag	UNP Q7A6D8
E	-10	PRO	-	expression tag	UNP Q7A6D8
E	-9	THR	-	expression tag	UNP Q7A6D8
E	-8	THR	-	expression tag	UNP Q7A6D8
E	-7	GLU	-	expression tag	UNP Q7A6D8
E	-6	ASN	-	expression tag	UNP Q7A6D8
E	-5	LEU	-	expression tag	UNP Q7A6D8
E	-4	TYR	-	expression tag	UNP Q7A6D8
E	-3	PHE	-	expression tag	UNP Q7A6D8
E	-2	GLN	-	expression tag	UNP Q7A6D8
E	-1	GLY	-	expression tag	UNP Q7A6D8
E	0	ALA	-	expression tag	UNP Q7A6D8
E	2	VAL	LEU	engineered mutation	UNP Q7A6D8
F	-25	MET	-	expression tag	UNP Q7A6D8
F	-24	LYS	-	expression tag	UNP Q7A6D8
F	-23	HIS	-	expression tag	UNP Q7A6D8

Continued on next page...

Continued from previous page...

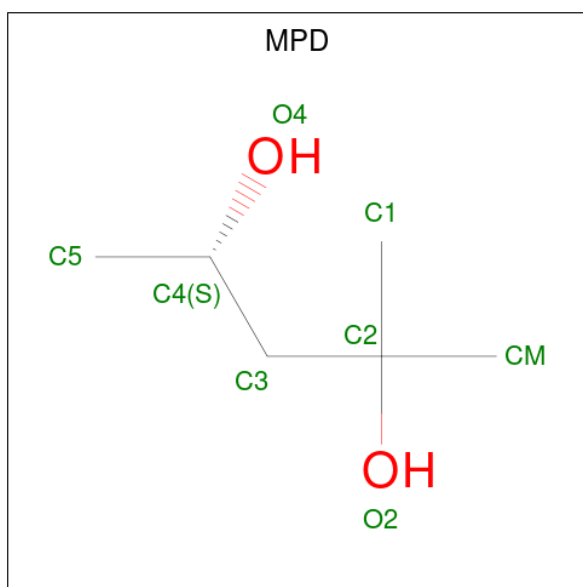
Chain	Residue	Modelled	Actual	Comment	Reference
F	-22	HIS	-	expression tag	UNP Q7A6D8
F	-21	HIS	-	expression tag	UNP Q7A6D8
F	-20	HIS	-	expression tag	UNP Q7A6D8
F	-19	HIS	-	expression tag	UNP Q7A6D8
F	-18	HIS	-	expression tag	UNP Q7A6D8
F	-17	PRO	-	expression tag	UNP Q7A6D8
F	-16	MET	-	expression tag	UNP Q7A6D8
F	-15	SER	-	expression tag	UNP Q7A6D8
F	-14	ASP	-	expression tag	UNP Q7A6D8
F	-13	TYR	-	expression tag	UNP Q7A6D8
F	-12	ASP	-	expression tag	UNP Q7A6D8
F	-11	ILE	-	expression tag	UNP Q7A6D8
F	-10	PRO	-	expression tag	UNP Q7A6D8
F	-9	THR	-	expression tag	UNP Q7A6D8
F	-8	THR	-	expression tag	UNP Q7A6D8
F	-7	GLU	-	expression tag	UNP Q7A6D8
F	-6	ASN	-	expression tag	UNP Q7A6D8
F	-5	LEU	-	expression tag	UNP Q7A6D8
F	-4	TYR	-	expression tag	UNP Q7A6D8
F	-3	PHE	-	expression tag	UNP Q7A6D8
F	-2	GLN	-	expression tag	UNP Q7A6D8
F	-1	GLY	-	expression tag	UNP Q7A6D8
F	0	ALA	-	expression tag	UNP Q7A6D8
F	2	VAL	LEU	engineered mutation	UNP Q7A6D8
G	-25	MET	-	expression tag	UNP Q7A6D8
G	-24	LYS	-	expression tag	UNP Q7A6D8
G	-23	HIS	-	expression tag	UNP Q7A6D8
G	-22	HIS	-	expression tag	UNP Q7A6D8
G	-21	HIS	-	expression tag	UNP Q7A6D8
G	-20	HIS	-	expression tag	UNP Q7A6D8
G	-19	HIS	-	expression tag	UNP Q7A6D8
G	-18	HIS	-	expression tag	UNP Q7A6D8
G	-17	PRO	-	expression tag	UNP Q7A6D8
G	-16	MET	-	expression tag	UNP Q7A6D8
G	-15	SER	-	expression tag	UNP Q7A6D8
G	-14	ASP	-	expression tag	UNP Q7A6D8
G	-13	TYR	-	expression tag	UNP Q7A6D8
G	-12	ASP	-	expression tag	UNP Q7A6D8
G	-11	ILE	-	expression tag	UNP Q7A6D8
G	-10	PRO	-	expression tag	UNP Q7A6D8
G	-9	THR	-	expression tag	UNP Q7A6D8
G	-8	THR	-	expression tag	UNP Q7A6D8

Continued on next page...

Continued from previous page...

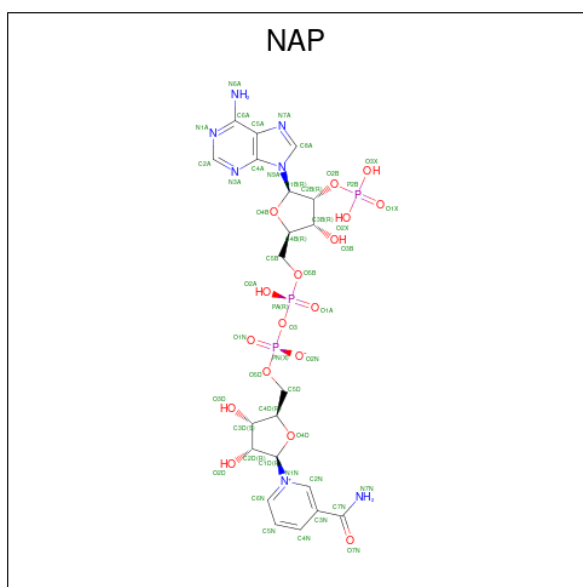
Chain	Residue	Modelled	Actual	Comment	Reference
G	-7	GLU	-	expression tag	UNP Q7A6D8
G	-6	ASN	-	expression tag	UNP Q7A6D8
G	-5	LEU	-	expression tag	UNP Q7A6D8
G	-4	TYR	-	expression tag	UNP Q7A6D8
G	-3	PHE	-	expression tag	UNP Q7A6D8
G	-2	GLN	-	expression tag	UNP Q7A6D8
G	-1	GLY	-	expression tag	UNP Q7A6D8
G	0	ALA	-	expression tag	UNP Q7A6D8
G	2	VAL	LEU	engineered mutation	UNP Q7A6D8
H	-25	MET	-	expression tag	UNP Q7A6D8
H	-24	LYS	-	expression tag	UNP Q7A6D8
H	-23	HIS	-	expression tag	UNP Q7A6D8
H	-22	HIS	-	expression tag	UNP Q7A6D8
H	-21	HIS	-	expression tag	UNP Q7A6D8
H	-20	HIS	-	expression tag	UNP Q7A6D8
H	-19	HIS	-	expression tag	UNP Q7A6D8
H	-18	HIS	-	expression tag	UNP Q7A6D8
H	-17	PRO	-	expression tag	UNP Q7A6D8
H	-16	MET	-	expression tag	UNP Q7A6D8
H	-15	SER	-	expression tag	UNP Q7A6D8
H	-14	ASP	-	expression tag	UNP Q7A6D8
H	-13	TYR	-	expression tag	UNP Q7A6D8
H	-12	ASP	-	expression tag	UNP Q7A6D8
H	-11	ILE	-	expression tag	UNP Q7A6D8
H	-10	PRO	-	expression tag	UNP Q7A6D8
H	-9	THR	-	expression tag	UNP Q7A6D8
H	-8	THR	-	expression tag	UNP Q7A6D8
H	-7	GLU	-	expression tag	UNP Q7A6D8
H	-6	ASN	-	expression tag	UNP Q7A6D8
H	-5	LEU	-	expression tag	UNP Q7A6D8
H	-4	TYR	-	expression tag	UNP Q7A6D8
H	-3	PHE	-	expression tag	UNP Q7A6D8
H	-2	GLN	-	expression tag	UNP Q7A6D8
H	-1	GLY	-	expression tag	UNP Q7A6D8
H	0	ALA	-	expression tag	UNP Q7A6D8
H	2	VAL	LEU	engineered mutation	UNP Q7A6D8

- Molecule 2 is (4S)-2-METHYL-2,4-PENTANEDIOL (three-letter code: MPD) (formula: C₆H₁₄O₂).



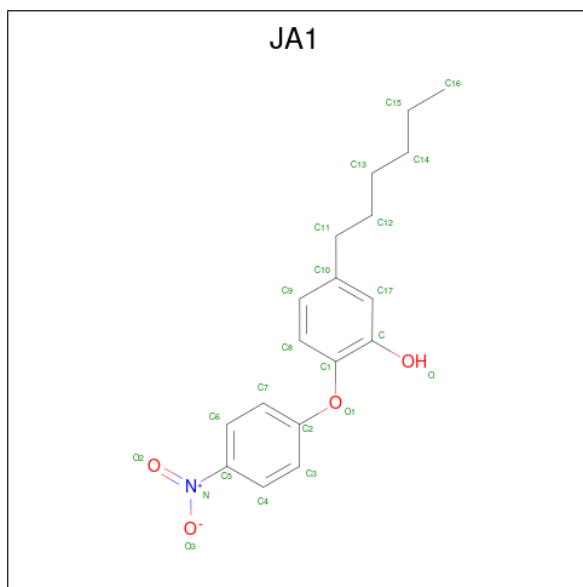
Mol	Chain	Residues	Atoms	ZeroOcc	AltConf
2	A	1	Total C O 8 6 2	0	0
2	C	1	Total C O 8 6 2	0	0
2	D	1	Total C O 8 6 2	0	0
2	E	1	Total C O 8 6 2	0	0
2	F	1	Total C O 8 6 2	0	0
2	G	1	Total C O 8 6 2	0	0
2	H	1	Total C O 8 6 2	0	0

- Molecule 3 is NADP NICOTINAMIDE-ADENINE-DINUCLEOTIDE PHOSPHATE (three-letter code: NAP) (formula: C₂₁H₂₈N₇O₁₇P₃).



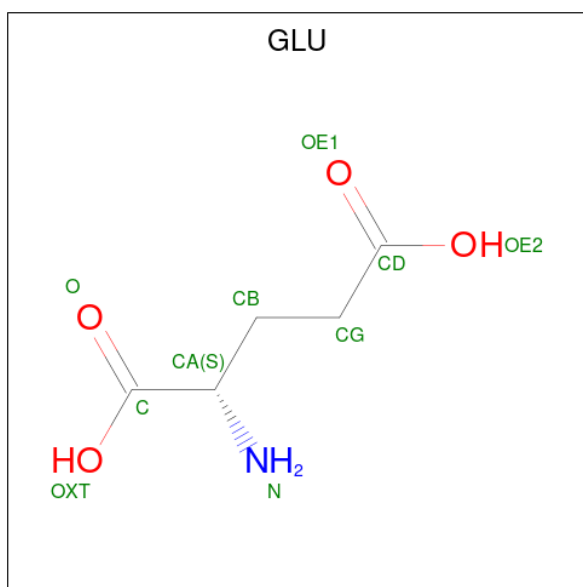
Mol	Chain	Residues	Atoms					ZeroOcc	AltConf
			Total	C	N	O	P		
3	A	1	Total 48	21	7	17	3	0	0
3	B	1	Total 48	21	7	17	3	0	0
3	C	1	Total 48	21	7	17	3	0	0
3	D	1	Total 48	21	7	17	3	0	0
3	E	1	Total 48	21	7	17	3	0	0
3	F	1	Total 48	21	7	17	3	0	0
3	G	1	Total 48	21	7	17	3	0	0
3	H	1	Total 48	21	7	17	3	0	0

- Molecule 4 is 5-HEXYL-2-(4-NITROPHENOXY)PHENOL (three-letter code: JA1) (formula: C₁₈H₂₁NO₄).



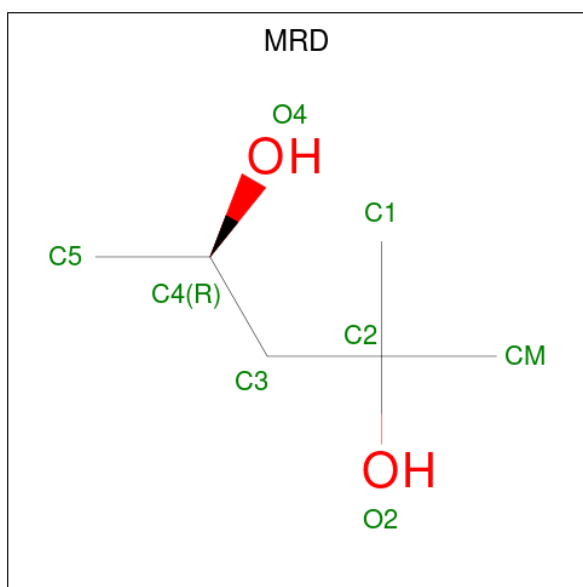
Mol	Chain	Residues	Atoms				ZeroOcc	AltConf
			Total	C	N	O		
4	A	1	23	18	1	4	0	0
4	B	1	23	18	1	4	0	0
4	C	1	23	18	1	4	0	0
4	C	1	23	18	1	4	0	0
4	E	1	23	18	1	4	0	0
4	E	1	23	18	1	4	0	0
4	G	1	23	18	1	4	0	0
4	H	1	23	18	1	4	0	0

- Molecule 5 is GLUTAMIC ACID (three-letter code: GLU) (formula: C₅H₉NO₄).



Mol	Chain	Residues	Atoms				ZeroOcc	AltConf
			Total	C	N	O		
5	B	1	10	5	1	4	0	0
5	C	1	10	5	1	4	0	0
5	E	1	10	5	1	4	0	0
5	F	1	10	5	1	4	0	0
5	G	1	10	5	1	4	0	0

- Molecule 6 is (4R)-2-METHYLPENTANE-2,4-DIOL (three-letter code: MRD) (formula: C₆H₁₄O₂).



Mol	Chain	Residues	Atoms		ZeroOcc	AltConf
6	B	1	Total	C O	0	0
			8	6 2		

- Molecule 7 is water.

Mol	Chain	Residues	Atoms		ZeroOcc	AltConf
7	A	142	Total	O	0	0
			142	142		
7	A	1	Total	O	0	0
			1	1		
7	A	1	Total	O	0	0
			1	1		
7	B	113	Total	O	0	0
			113	113		
7	C	123	Total	O	0	0
			123	123		
7	C	1	Total	O	0	0
			1	1		
7	C	1	Total	O	0	0
			1	1		
7	D	82	Total	O	0	0
			82	82		
7	E	142	Total	O	0	0
			142	142		
7	F	115	Total	O	0	0
			115	115		
7	G	121	Total	O	0	0
			121	121		

Continued on next page...

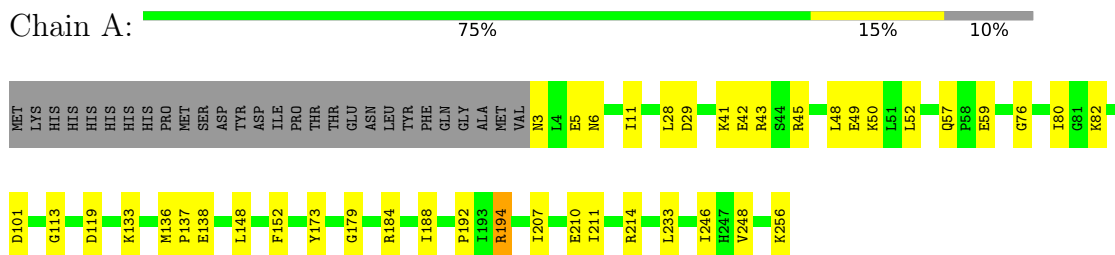
Continued from previous page...

Mol	Chain	Residues	Atoms	ZeroOcc	AltConf
7	H	85	Total O 85 85	0	0
7	H	2	Total O 2 2	0	0

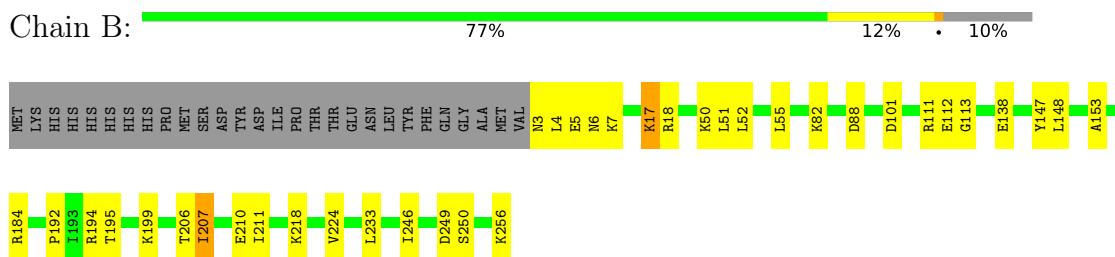
3 Residue-property plots [i](#)

These plots are drawn for all protein, RNA, DNA and oligosaccharide chains in the entry. The first graphic for a chain summarises the proportions of the various outlier classes displayed in the second graphic. The second graphic shows the sequence view annotated by issues in geometry and electron density. Residues are color-coded according to the number of geometric quality criteria for which they contain at least one outlier: green = 0, yellow = 1, orange = 2 and red = 3 or more. A red dot above a residue indicates a poor fit to the electron density ($RSRZ > 2$). Stretches of 2 or more consecutive residues without any outlier are shown as a green connector. Residues present in the sample, but not in the model, are shown in grey.

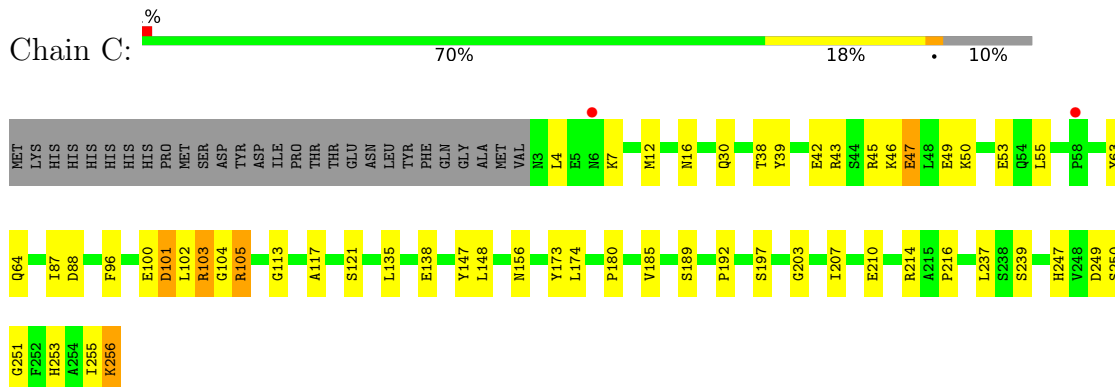
- Molecule 1: ENOYL-[ACYL-CARRIER-PROTEIN] REDUCTASE [NADPH]



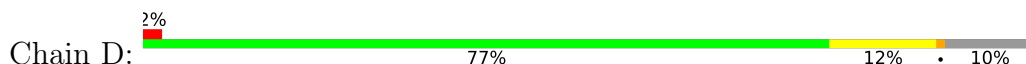
- Molecule 1: ENOYL-[ACYL-CARRIER-PROTEIN] REDUCTASE [NADPH]

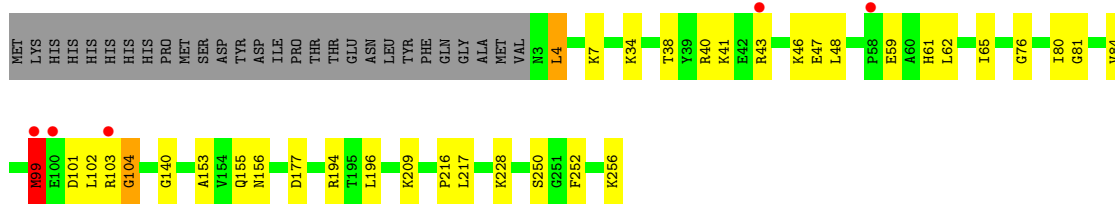


- Molecule 1: ENOYL-[ACYL-CARRIER-PROTEIN] REDUCTASE [NADPH]

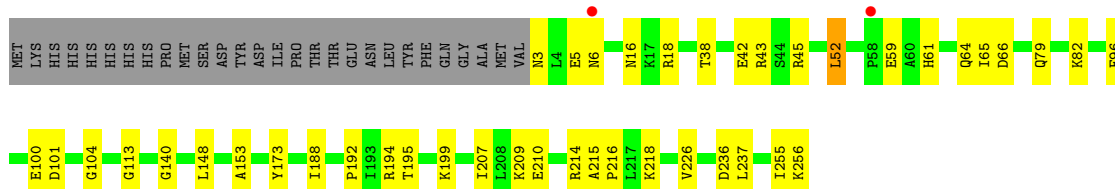
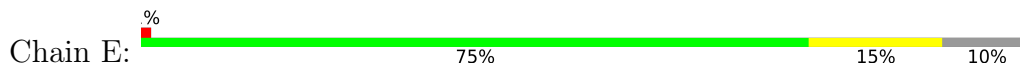


- Molecule 1: ENOYL-[ACYL-CARRIER-PROTEIN] REDUCTASE [NADPH]

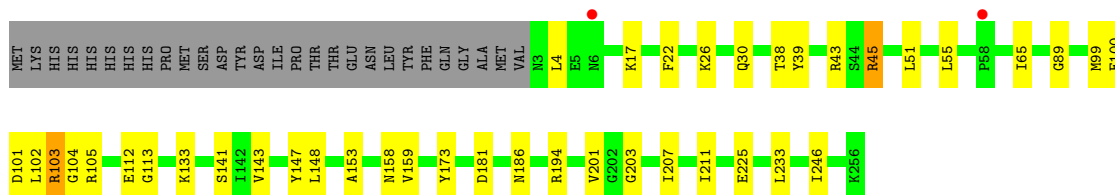
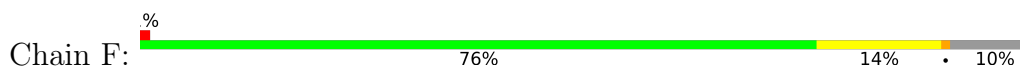




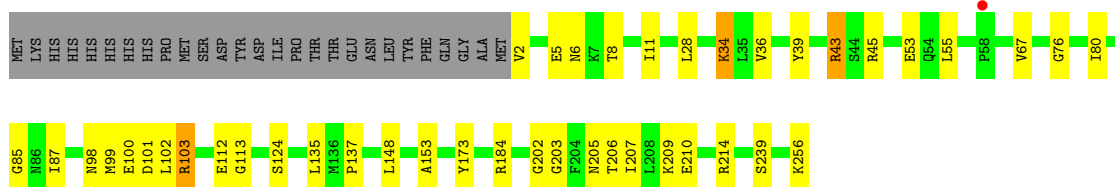
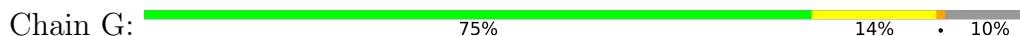
• Molecule 1: ENOYL-[ACYL-CARRIER-PROTEIN] REDUCTASE [NADPH]



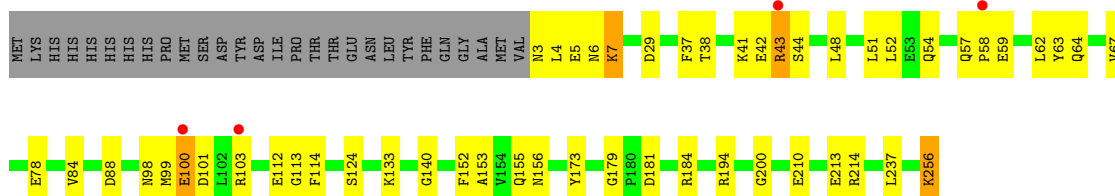
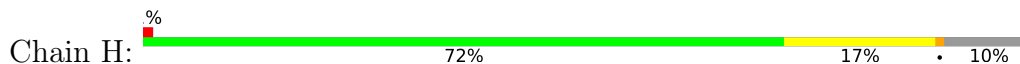
• Molecule 1: ENOYL-[ACYL-CARRIER-PROTEIN] REDUCTASE [NADPH]



• Molecule 1: ENOYL-[ACYL-CARRIER-PROTEIN] REDUCTASE [NADPH]



• Molecule 1: ENOYL-[ACYL-CARRIER-PROTEIN] REDUCTASE [NADPH]



4 Data and refinement statistics

Property	Value	Source
Space group	P 1	Depositor
Cell constants a, b, c, α , β , γ	89.44Å 94.83Å 94.80Å 98.30° 111.35° 97.52°	Depositor
Resolution (Å)	40.82 – 2.30 40.82 – 2.30	Depositor EDS
% Data completeness (in resolution range)	96.8 (40.82-2.30) 96.8 (40.82-2.30)	Depositor EDS
R_{merge}	0.11	Depositor
R_{sym}	(Not available)	Depositor
$\langle I/\sigma(I) \rangle$ ¹	2.28 (at 2.29Å)	Xtrriage
Refinement program	REFMAC 5.5.0109	Depositor
R, R_{free}	0.152 , 0.213 0.167 , 0.225	Depositor DCC
R_{free} test set	6135 reflections (5.07%)	wwPDB-VP
Wilson B-factor (Å ²)	23.3	Xtrriage
Anisotropy	0.523	Xtrriage
Bulk solvent k_{sol} (e/Å ³), B_{sol} (Å ²)	0.34 , 45.5	EDS
L-test for twinning ²	$\langle L \rangle = 0.49$, $\langle L^2 \rangle = 0.32$	Xtrriage
Estimated twinning fraction	No twinning to report.	Xtrriage
F_o, F_c correlation	0.96	EDS
Total number of atoms	17716	wwPDB-VP
Average B, all atoms (Å ²)	38.0	wwPDB-VP

Xtrriage's analysis on translational NCS is as follows: *The largest off-origin peak in the Patterson function is 7.20% of the height of the origin peak. No significant pseudotranslation is detected.*

¹Intensities estimated from amplitudes.

²Theoretical values of $\langle |L| \rangle$, $\langle L^2 \rangle$ for acentric reflections are 0.5, 0.333 respectively for untwinned datasets, and 0.375, 0.2 for perfectly twinned datasets.

5 Model quality i

5.1 Standard geometry i

Bond lengths and bond angles in the following residue types are not validated in this section: JA1, NAP, MRD, MPD

The Z score for a bond length (or angle) is the number of standard deviations the observed value is removed from the expected value. A bond length (or angle) with $|Z| > 5$ is considered an outlier worth inspection. RMSZ is the root-mean-square of all Z scores of the bond lengths (or angles).

Mol	Chain	Bond lengths		Bond angles	
		RMSZ	# Z >5	RMSZ	# Z >5
1	A	0.53	0/2021	0.78	0/2722
1	B	0.54	0/1993	0.78	0/2685
1	C	0.50	0/2082	0.77	1/2801 (0.0%)
1	D	1.29	4/2067 (0.2%)	1.03	2/2783 (0.1%)
1	E	0.52	0/2022	0.78	1/2723 (0.0%)
1	F	0.53	0/2051	0.80	1/2761 (0.0%)
1	G	0.51	0/2078	0.77	0/2797
1	H	0.51	0/2059	0.76	0/2772
All	All	0.67	4/16373 (0.0%)	0.81	5/22044 (0.0%)

Chiral center outliers are detected by calculating the chiral volume of a chiral center and verifying if the center is modelled as a planar moiety or with the opposite hand. A planarity outlier is detected by checking planarity of atoms in a peptide group, atoms in a mainchain group or atoms of a sidechain that are expected to be planar.

Mol	Chain	#Chirality outliers	#Planarity outliers
1	D	0	1

All (4) bond length outliers are listed below:

Mol	Chain	Res	Type	Atoms	Z	Observed(Å)	Ideal(Å)
1	D	99[A]	MET	CG-SD	27.98	2.53	1.81
1	D	99[B]	MET	CG-SD	27.98	2.53	1.81
1	D	99[A]	MET	SD-CE	26.73	3.27	1.77
1	D	99[B]	MET	SD-CE	26.73	3.27	1.77

All (5) bond angle outliers are listed below:

Mol	Chain	Res	Type	Atoms	Z	Observed(°)	Ideal(°)
1	D	99[A]	MET	CG-SD-CE	-27.30	56.53	100.20

Continued on next page...

Continued from previous page...

Mol	Chain	Res	Type	Atoms	Z	Observed(°)	Ideal(°)
1	D	99[B]	MET	CG-SD-CE	-27.30	56.53	100.20
1	F	45	ARG	NE-CZ-NH1	5.35	122.98	120.30
1	E	43	ARG	NE-CZ-NH2	-5.15	117.73	120.30
1	C	88	ASP	CB-CG-OD1	-5.03	113.77	118.30

There are no chirality outliers.

All (1) planarity outliers are listed below:

Mol	Chain	Res	Type	Group
1	D	104[A]	GLY	Peptide

5.2 Too-close contacts [i](#)

In the following table, the Non-H and H(model) columns list the number of non-hydrogen atoms and hydrogen atoms in the chain respectively. The H(added) column lists the number of hydrogen atoms added and optimized by MolProbity. The Clashes column lists the number of clashes within the asymmetric unit, whereas Symm-Clashes lists symmetry-related clashes.

Mol	Chain	Non-H	H(model)	H(added)	Clashes	Symm-Clashes
1	A	1985	0	2000	31	0
1	B	1963	0	1981	25	0
1	C	2046	0	2065	54	1
1	D	2033	0	2048	27	0
1	E	1983	0	2006	36	0
1	F	2024	0	2033	39	0
1	G	2045	0	2061	44	1
1	H	2026	0	2038	40	0
2	A	8	0	14	3	0
2	C	8	0	14	0	0
2	D	8	0	14	1	0
2	E	8	0	14	6	0
2	F	8	0	14	0	0
2	G	8	0	14	1	0
2	H	8	0	14	7	0
3	A	48	0	25	1	0
3	B	48	0	25	1	0
3	C	48	0	25	3	0
3	D	48	0	25	0	0
3	E	48	0	25	1	0
3	F	48	0	25	3	0
3	G	48	0	25	0	0

Continued on next page...

Continued from previous page...

Mol	Chain	Non-H	H(model)	H(added)	Clashes	Symm-Clashes
3	H	48	0	25	0	0
4	A	23	0	20	1	0
4	B	23	0	20	0	0
4	C	46	0	40	6	0
4	E	46	0	40	1	0
4	G	23	0	20	1	0
4	H	23	0	21	0	0
5	B	10	0	5	0	0
5	C	10	0	5	0	0
5	E	10	0	5	0	0
5	F	10	0	5	0	0
5	G	10	0	5	5	0
6	B	8	0	14	1	0
7	A	144	0	0	5	0
7	B	113	0	0	6	1
7	C	125	0	0	4	0
7	D	82	0	0	3	0
7	E	142	0	0	5	0
7	F	115	0	0	7	1
7	G	121	0	0	3	0
7	H	87	0	0	3	0
All	All	17716	0	16730	280	2

The all-atom clashscore is defined as the number of clashes found per 1000 atoms (including hydrogen atoms). The all-atom clashscore for this structure is 8.

All (280) close contacts within the same asymmetric unit are listed below, sorted by their clash magnitude.

Atom-1	Atom-2	Interatomic distance (Å)	Clash overlap (Å)
1:G:101[A]:ASP:O	1:G:102[A]:LEU:HD23	1.46	1.14
1:C:103[A]:ARG:HG3	1:C:103[A]:ARG:HH11	1.00	1.11
1:G:103[A]:ARG:HH11	1:G:103[A]:ARG:CG	1.70	1.04
1:F:103[A]:ARG:NH1	1:F:103[A]:ARG:HG3	1.56	1.04
1:F:103[A]:ARG:HH11	1:F:103[A]:ARG:CG	1.72	1.01
1:G:103[A]:ARG:HG3	1:G:103[A]:ARG:NH1	1.61	0.98
1:F:103[A]:ARG:HG3	1:F:103[A]:ARG:HH11	0.81	0.97
1:F:103[A]:ARG:HG2	7:F:2060:HOH:O	1.64	0.94
1:C:103[A]:ARG:HH11	1:C:103[A]:ARG:CG	1.82	0.93
1:C:103[A]:ARG:HG3	1:C:103[A]:ARG:NH1	1.79	0.92
1:G:2:VAL:HG13	1:G:2:VAL:O	1.69	0.92
1:G:103[A]:ARG:HH11	1:G:103[A]:ARG:HG3	0.80	0.92

Continued on next page...

Continued from previous page...

Atom-1	Atom-2	Interatomic distance (Å)	Clash overlap (Å)
1:A:148:LEU:HD21	1:C:256:LYS:HD3	1.54	0.89
1:C:101[A]:ASP:O	1:C:102[A]:LEU:HD23	1.74	0.87
1:C:101[A]:ASP:O	1:C:102[A]:LEU:CD2	2.23	0.86
1:G:101[A]:ASP:O	1:G:102[A]:LEU:CD2	2.23	0.85
2:A:1257:MPD:H53	7:A:2133:HOH:O	1.76	0.85
1:F:101[A]:ASP:O	1:F:102[A]:LEU:HD23	1.78	0.83
1:H:184:ARG:HE	2:H:1258:MPD:H51	1.43	0.83
1:C:101[A]:ASP:O	1:C:102[A]:LEU:HG	1.81	0.80
1:G:205:ASN:H	5:G:1258:GLU:HG2	1.45	0.80
1:C:101[A]:ASP:O	1:C:102[A]:LEU:CG	2.31	0.79
1:D:34:LYS:HD3	1:D:84[A]:VAL:HG11	1.65	0.79
1:E:210:GLU:HG3	1:E:214[A]:ARG:HD2	1.63	0.79
1:A:48:LEU:O	1:A:52:LEU:HD23	1.83	0.78
1:D:99[A]:MET:HG3	1:D:99[A]:MET:CE	2.13	0.78
1:G:210:GLU:HG2	1:G:214[B]:ARG:HD2	1.66	0.77
1:D:40:ARG:HD3	1:D:41:LYS:HE3	1.68	0.75
1:D:140:GLY:HA2	2:D:1257:MPD:HM1	1.69	0.75
1:F:104[A]:GLY:N	7:F:2061:HOH:O	2.20	0.75
1:H:98:ASN:HB3	1:H:100[B]:GLU:HG2	1.70	0.74
1:H:99[B]:MET:CE	1:H:200:GLY:O	2.36	0.74
1:F:101[B]:ASP:OD2	1:F:113:GLY:HA3	1.88	0.73
2:E:1260:MPD:O4	7:E:2079:HOH:O	2.03	0.72
1:F:99[A]:MET:O	1:F:100[A]:GLU:C	2.26	0.72
1:F:103[A]:ARG:NH1	1:F:103[A]:ARG:CG	2.38	0.72
1:A:207:ILE:HG13	4:A:1259:JA1:H14A	1.70	0.71
1:E:236:ASP:OD1	2:E:1260:MPD:H52	1.90	0.71
1:E:256:LYS:HG2	1:G:148:LEU:HD21	1.73	0.71
1:F:112:GLU:HG3	7:F:2056:HOH:O	1.90	0.70
1:D:81:GLY:HA3	7:D:2035:HOH:O	1.92	0.70
1:C:207:ILE:HG13	4:C:1257:JA1:H15	1.74	0.69
1:H:99[B]:MET:HE2	1:H:103[B]:ARG:HE	1.57	0.68
1:A:256:LYS:HE2	1:C:255:ILE:O	1.92	0.68
1:G:2:VAL:O	1:G:2:VAL:CG1	2.43	0.67
1:C:101[B]:ASP:OD2	1:C:113:GLY:HA3	1.95	0.67
1:G:5:GLU:O	1:G:6:ASN:HB2	1.92	0.67
1:D:76:GLY:O	1:D:80:ILE:HG13	1.94	0.67
1:A:42[B]:GLU:OE1	1:A:45:ARG:NH2	2.15	0.67
1:F:101[A]:ASP:O	1:F:102[A]:LEU:CD2	2.42	0.67
1:H:194:ARG:NH2	7:H:2071:HOH:O	2.27	0.66
1:D:101[A]:ASP:O	1:D:102[A]:LEU:HD23	1.96	0.66
2:A:1257:MPD:C5	7:A:2133:HOH:O	2.40	0.65

Continued on next page...

Continued from previous page...

Atom-1	Atom-2	Interatomic distance (Å)	Clash overlap (Å)
1:A:43:ARG:HH12	1:E:104:GLY:HA3	1.61	0.65
1:E:140:GLY:HA2	2:E:1260:MPD:H13	1.78	0.65
1:E:64:GLN:HG2	7:E:2041:HOH:O	1.97	0.65
1:A:256:LYS:HG2	1:C:148:LEU:HD21	1.79	0.64
1:B:112:GLU:HG3	7:B:2049:HOH:O	1.96	0.64
1:A:3:ASN:HD21	1:A:5:GLU:HB2	1.63	0.63
7:F:2114:HOH:O	1:H:152:PHE:HE1	1.81	0.63
1:G:103[A]:ARG:CG	1:G:103[A]:ARG:NH1	2.40	0.63
1:H:29:ASP:HB3	7:H:2013:HOH:O	1.98	0.63
1:H:100[B]:GLU:CD	1:H:100[B]:GLU:H	2.02	0.63
1:G:101[B]:ASP:OD2	1:G:113:GLY:HA3	1.99	0.63
1:C:103[A]:ARG:CG	1:C:103[A]:ARG:NH1	2.46	0.62
1:H:99[B]:MET:CE	1:H:103[B]:ARG:HE	2.13	0.62
1:D:34:LYS:HD3	1:D:84[A]:VAL:CG1	2.30	0.62
1:A:101:ASP:OD2	1:A:113:GLY:HA3	2.00	0.62
1:D:41:LYS:HD3	1:D:43:ARG:CZ	2.29	0.62
1:C:253:HIS:HD2	7:C:2120:HOH:O	1.83	0.60
1:B:194[A]:ARG:NH2	7:B:2089:HOH:O	2.13	0.60
7:G:2047:HOH:O	1:H:112[A]:GLU:OE2	2.15	0.60
1:G:99[A]:MET:C	1:G:101[A]:ASP:H	2.04	0.60
2:E:1260:MPD:O4	2:E:1260:MPD:H11	2.02	0.60
1:C:39:TYR:CE1	1:C:64:GLN:HB2	2.38	0.59
1:F:99[A]:MET:O	1:F:101[A]:ASP:N	2.36	0.59
1:B:184:ARG:HH21	6:B:1258:MRD:H5C2	1.67	0.59
1:A:45:ARG:HD2	1:A:49:GLU:OE2	2.02	0.58
1:G:103[A]:ARG:HB3	1:G:202:GLY:HA3	1.86	0.58
1:F:101[A]:ASP:HB3	1:F:159:VAL:HG12	1.86	0.58
1:H:140:GLY:HA2	2:H:1258:MPD:H12	1.86	0.58
2:H:1258:MPD:H53	7:H:2078:HOH:O	2.04	0.57
1:C:173:TYR:CZ	1:D:153:ALA:HA	2.40	0.56
1:D:99[A]:MET:CE	1:D:99[A]:MET:CG	2.82	0.56
1:C:147:TYR:CZ	4:C:1257:JA1:H13	2.40	0.56
1:H:184:ARG:HH21	2:H:1258:MPD:C5	2.18	0.56
1:B:3:ASN:HB3	7:B:2001:HOH:O	2.05	0.56
1:C:50:LYS:O	1:C:53:GLU:HG3	2.06	0.56
1:D:99[A]:MET:HG3	1:D:99[A]:MET:HE2	1.87	0.56
1:D:4:LEU:O	1:D:7:LYS:HB2	2.06	0.56
1:H:99[B]:MET:HE2	1:H:200:GLY:O	2.05	0.56
1:F:233:LEU:HD21	1:F:246:ILE:HD12	1.87	0.55
1:A:41:LYS:HE2	1:E:100:GLU:OE1	2.07	0.55
1:D:99[A]:MET:C	1:D:101[A]:ASP:H	2.09	0.55

Continued on next page...

Continued from previous page...

Atom-1	Atom-2	Interatomic distance (Å)	Clash overlap (Å)
1:F:45:ARG:HD3	7:F:2024:HOH:O	2.07	0.54
1:G:98:ASN:HB3	1:G:100[B]:GLU:HG3	1.89	0.54
1:B:18:ARG:HH12	1:B:194[B]:ARG:HE	1.55	0.54
1:A:194:ARG:HG2	1:A:194:ARG:HH11	1.71	0.54
1:F:102[A]:LEU:HD13	1:F:201:VAL:HG22	1.88	0.54
1:F:233:LEU:HD21	1:F:246:ILE:CD1	2.38	0.54
1:G:85:GLY:HA2	7:G:2051:HOH:O	2.08	0.54
1:B:148:LEU:HD21	1:D:256:LYS:HG2	1.90	0.54
1:E:148:LEU:HD21	1:G:256:LYS:HE3	1.90	0.54
1:G:203:GLY:H	5:G:1258:GLU:N	2.05	0.54
1:H:184:ARG:NE	2:H:1258:MPD:H51	2.18	0.53
1:A:179:GLY:HA3	1:D:216:PRO:O	2.08	0.53
1:E:210:GLU:CG	1:E:214[A]:ARG:HD2	2.38	0.53
1:G:103[A]:ARG:N	1:G:103[A]:ARG:HD2	2.22	0.53
1:H:155:GLN:O	1:H:156:ASN:HB2	2.08	0.53
7:A:2120:HOH:O	1:C:256:LYS:HE2	2.07	0.53
1:C:30:GLN:HA	1:C:30:GLN:OE1	2.07	0.53
1:B:7:LYS:HA	1:B:88:ASP:OD2	2.09	0.53
1:E:153:ALA:HA	1:F:173:TYR:CZ	2.44	0.53
1:F:101[A]:ASP:HB3	1:F:159:VAL:CG1	2.39	0.53
1:C:101[A]:ASP:HB3	7:C:2055:HOH:O	2.09	0.52
1:B:192:PRO:HG3	1:B:207:ILE:HG22	1.92	0.52
1:C:249:ASP:O	1:C:250:SER:HB2	2.10	0.52
1:G:203:GLY:N	5:G:1258:GLU:HB2	2.24	0.52
1:F:38:THR:HG21	1:F:65:ILE:HD12	1.90	0.52
1:H:210:GLU:HG3	1:H:214:ARG:HD2	1.91	0.52
1:A:184:ARG:HE	2:A:1257:MPD:H51	1.75	0.52
1:E:18[A]:ARG:HH21	1:E:199:LYS:HZ3	1.58	0.52
1:E:194:ARG:HG3	7:E:2112:HOH:O	2.09	0.52
1:E:101:ASP:OD2	1:E:113:GLY:HA3	2.10	0.51
1:D:155:GLN:O	1:D:156:ASN:HB2	2.11	0.51
1:A:76:GLY:O	1:A:80:ILE:HG13	2.11	0.51
1:D:99[A]:MET:O	1:D:101[A]:ASP:N	2.43	0.51
1:B:249:ASP:O	1:B:250:SER:HB2	2.11	0.51
1:E:18[A]:ARG:HH21	1:E:199:LYS:NZ	2.08	0.51
3:F:1259:NAP:O1N	3:F:1259:NAP:H2N	2.11	0.51
1:H:3:ASN:HD21	1:H:5:GLU:HG3	1.75	0.51
1:D:104[B]:GLY:HA3	7:D:2040:HOH:O	2.09	0.51
1:F:207:ILE:O	1:F:211:ILE:HG12	2.10	0.50
1:G:203:GLY:H	5:G:1258:GLU:HB2	1.75	0.50
1:H:184:ARG:HH21	2:H:1258:MPD:H51	1.76	0.50

Continued on next page...

Continued from previous page...

Atom-1	Atom-2	Interatomic distance (Å)	Clash overlap (Å)
1:C:101[A]:ASP:C	1:C:102[A]:LEU:HG	2.32	0.50
1:G:173:TYR:CZ	1:H:153:ALA:HA	2.47	0.50
1:C:210:GLU:HG3	1:C:214[B]:ARG:HD2	1.93	0.50
1:D:59:GLU:HG3	1:D:61:HIS:NE2	2.27	0.50
1:H:7:LYS:HA	1:H:88:ASP:OD2	2.11	0.50
1:C:4:LEU:O	1:C:7:LYS:HB2	2.11	0.50
1:F:101[A]:ASP:O	1:F:102[A]:LEU:CG	2.59	0.50
1:H:100[A]:GLU:O	1:H:100[A]:GLU:HG3	2.11	0.50
1:F:104[A]:GLY:O	7:F:2061:HOH:O	2.20	0.49
1:F:225:GLU:OE2	1:G:239[B]:SER:OG	2.29	0.49
1:H:5:GLU:O	1:H:6:ASN:HB2	2.11	0.49
1:A:152:PHE:CG	1:C:256:LYS:HG3	2.46	0.49
1:A:207:ILE:O	1:A:211:ILE:HG12	2.12	0.49
1:A:41:LYS:HE2	1:E:100:GLU:CD	2.32	0.49
1:A:233:LEU:HD21	1:A:246:ILE:HD12	1.93	0.49
1:C:45[A]:ARG:NH1	1:C:49:GLU:OE2	2.45	0.49
1:B:101:ASP:OD2	1:B:113:GLY:HA3	2.13	0.49
1:A:5:GLU:O	1:A:6:ASN:HB2	2.12	0.49
1:B:233:LEU:HD21	1:B:246:ILE:HD12	1.94	0.48
1:E:18[A]:ARG:NH2	1:E:199:LYS:NZ	2.60	0.48
1:G:137:PRO:HD2	7:G:2075:HOH:O	2.12	0.48
1:H:133:LYS:HE3	1:H:181:ASP:OD2	2.13	0.48
1:C:147:TYR:CE2	4:C:1257:JA1:H13	2.49	0.48
1:H:213[B]:GLU:HG2	1:H:214:ARG:HG3	1.94	0.48
1:E:96:PHE:HA	4:E:1257:JA1:O3	2.14	0.48
1:E:192:PRO:HA	3:E:1261:NAP:O7N	2.13	0.48
1:E:214[B]:ARG:NH2	7:E:2118:HOH:O	2.45	0.48
1:F:103[A]:ARG:HD2	1:F:103[A]:ARG:N	2.28	0.48
1:F:147:TYR:HB2	3:F:1259:NAP:H5N	1.96	0.48
7:B:2096:HOH:O	1:C:239[B]:SER:O	2.20	0.47
1:A:29:ASP:OD1	1:A:57:GLN:NE2	2.39	0.47
1:F:43:ARG:O	1:F:43:ARG:HG3	2.14	0.47
1:F:133:LYS:HE2	1:F:181:ASP:OD2	2.14	0.47
1:H:99[B]:MET:HE1	1:H:200:GLY:O	2.13	0.47
1:E:38:THR:HG21	1:E:65:ILE:HD12	1.96	0.47
1:F:147:TYR:HB2	3:F:1259:NAP:C5N	2.45	0.47
1:C:12:MET:HG2	1:C:38:THR:OG1	2.14	0.47
1:A:173:TYR:CZ	1:B:153:ALA:HA	2.49	0.47
1:C:117:ALA:O	1:C:121:SER:HB2	2.15	0.47
1:C:197:SER:HB3	4:C:1257:JA1:C3	2.44	0.47
1:G:8:THR:HA	1:G:34:LYS:O	2.15	0.47

Continued on next page...

Continued from previous page...

Atom-1	Atom-2	Interatomic distance (Å)	Clash overlap (Å)
1:G:39:TYR:CE1	1:G:45:ARG:HB2	2.50	0.47
1:C:46:LYS:HE2	7:C:2027:HOH:O	2.14	0.47
1:G:98:ASN:HB3	1:G:100[B]:GLU:CG	2.44	0.47
1:C:42:GLU:HB2	1:C:45[B]:ARG:NH1	2.29	0.47
1:H:37:PHE:CE2	1:H:52:LEU:HD11	2.49	0.47
1:D:41:LYS:HD3	1:D:43:ARG:NH1	2.29	0.46
1:F:101[A]:ASP:O	1:F:102[A]:LEU:HG	2.16	0.46
1:E:255:ILE:HG22	1:G:153:ALA:HB3	1.97	0.46
1:G:153:ALA:HA	1:H:173:TYR:CZ	2.50	0.46
1:G:99[A]:MET:O	1:G:101[A]:ASP:N	2.48	0.46
1:C:63:TYR:CD1	1:C:63:TYR:N	2.83	0.46
1:E:140:GLY:HA2	2:E:1260:MPD:C1	2.45	0.46
1:B:224:VAL:HG23	7:B:2098:HOH:O	2.15	0.46
1:F:89:GLY:HA2	1:F:141:SER:O	2.16	0.46
1:H:51:LEU:O	1:H:54:GLN:HB2	2.15	0.46
1:D:196:LEU:HD23	7:D:2082:HOH:O	2.16	0.45
1:C:39:TYR:CZ	1:C:64:GLN:HB2	2.50	0.45
1:E:52:LEU:HD12	1:E:52:LEU:HA	1.69	0.45
1:A:194:ARG:HG2	1:A:194:ARG:NH1	2.32	0.45
1:H:101[B]:ASP:OD2	1:H:113:GLY:HA3	2.17	0.45
1:B:194[A]:ARG:HG2	1:B:194[A]:ARG:HH11	1.81	0.45
1:E:256:LYS:HG2	1:G:148:LEU:CD2	2.44	0.45
1:D:38:THR:HG21	1:D:65:ILE:HD12	1.99	0.45
1:F:148:LEU:HD21	1:H:256:LYS:HE3	1.99	0.45
3:C:1261:NAP:O1N	3:C:1261:NAP:H2N	2.17	0.45
1:A:82:LYS:HD2	7:A:2053:HOH:O	2.17	0.45
1:B:256:LYS:HE3	1:D:252:PHE:CE2	2.52	0.45
1:D:80:ILE:O	1:D:84[B]:VAL:HG22	2.17	0.45
1:G:76:GLY:O	1:G:80:ILE:HG13	2.17	0.44
1:C:100[B]:GLU:H	1:C:100[B]:GLU:HG2	1.20	0.44
1:B:207:ILE:O	1:B:211:ILE:HG12	2.16	0.44
1:B:233:LEU:HD21	1:B:246:ILE:CD1	2.47	0.44
1:C:16:ASN:HA	1:C:47:GLU:HG3	1.98	0.44
1:H:67:VAL:HB	1:H:124:SER:HB2	1.99	0.44
1:F:17:LYS:HB3	1:F:51:LEU:HD21	1.99	0.44
1:C:105[A]:ARG:HD2	7:C:2059:HOH:O	2.18	0.44
1:E:5:GLU:O	1:E:6:ASN:HB2	2.18	0.44
1:D:217:LEU:HB2	1:D:250:SER:HB3	2.00	0.44
1:H:38:THR:HA	1:H:63:TYR:O	2.18	0.44
1:G:11:ILE:HD11	1:G:28:LEU:HD12	1.99	0.44
1:E:16:ASN:HB2	7:E:2011:HOH:O	2.18	0.43

Continued on next page...

Continued from previous page...

Atom-1	Atom-2	Interatomic distance (Å)	Clash overlap (Å)
1:C:47:GLU:OE2	1:C:50:LYS:CE	2.66	0.43
1:E:3:ASN:C	1:E:3:ASN:ND2	2.70	0.43
1:C:103[A]:ARG:HA	1:C:156:ASN:OD1	2.18	0.43
1:C:189:SER:HB3	1:C:247:HIS:HA	2.00	0.43
1:F:203:GLY:O	1:F:207:ILE:HG12	2.19	0.43
1:C:87:ILE:HG12	1:C:135:LEU:HB2	2.01	0.43
1:H:43:ARG:HG3	1:H:44:SER:N	2.32	0.43
1:H:48:LEU:HD13	1:H:62:LEU:HD22	2.00	0.43
1:B:52:LEU:HD23	1:B:55:LEU:HD12	2.00	0.43
1:B:218:LYS:HE2	1:C:180:PRO:HG3	2.01	0.43
1:E:215:ALA:O	1:E:218:LYS:HD3	2.19	0.43
1:G:100[B]:GLU:H	1:G:100[B]:GLU:HG2	1.27	0.43
1:G:184:ARG:HH21	2:G:1259:MPD:H4	1.84	0.42
1:A:188:ILE:HG23	1:A:248:VAL:HG23	2.01	0.42
1:C:103[A]:ARG:HG2	1:C:104[A]:GLY:N	2.34	0.42
1:G:101[A]:ASP:O	1:G:102[A]:LEU:CG	2.66	0.42
1:C:174:LEU:HB3	1:C:185:VAL:HG21	2.01	0.42
1:E:66:ASP:C	1:E:66:ASP:OD1	2.58	0.42
1:C:103[A]:ARG:HD2	1:C:103[A]:ARG:O	2.19	0.42
4:C:1257:JA1:O1	3:C:1261:NAP:H2D	2.20	0.42
1:A:133:LYS:HE3	7:B:2058:HOH:O	2.18	0.42
1:F:143:VAL:HA	1:F:186:ASN:O	2.20	0.42
1:G:87:ILE:HG12	1:G:135:LEU:HB2	2.02	0.42
1:A:192:PRO:HA	3:A:1258:NAP:O7N	2.20	0.42
1:A:11:ILE:HD11	1:A:28:LEU:HD12	2.02	0.42
1:C:216:PRO:HG2	1:C:251:GLY:HA3	2.01	0.42
1:H:37:PHE:HB2	1:H:62:LEU:HD23	2.01	0.42
1:B:17:LYS:CB	1:B:51:LEU:HD21	2.50	0.41
1:G:36:VAL:HG11	1:G:80:ILE:HD13	2.02	0.41
2:H:1258:MPD:H4	2:H:1258:MPD:H11	1.81	0.41
1:A:119:ASP:OD1	1:B:111:ARG:NH1	2.51	0.41
1:G:207:ILE:HG13	4:G:1257:JA1:H16B	2.01	0.41
1:A:214[A]:ARG:NH2	7:A:2120:HOH:O	2.54	0.41
1:C:203:GLY:O	1:C:207:ILE:HG12	2.21	0.41
1:G:67:VAL:CG2	1:G:124:SER:HB3	2.51	0.41
1:H:57:GLN:HA	1:H:58:PRO:HD3	1.91	0.41
2:E:1260:MPD:O4	2:E:1260:MPD:C1	2.69	0.41
1:F:39:TYR:OH	1:F:45:ARG:HD2	2.19	0.41
1:F:158:ASN:HB3	7:F:2059:HOH:O	2.20	0.41
1:G:206:THR:HG23	5:G:1258:GLU:OE2	2.20	0.41
1:E:173:TYR:CZ	1:F:153:ALA:HA	2.56	0.41

Continued on next page...

Continued from previous page...

Atom-1	Atom-2	Interatomic distance (Å)	Clash overlap (Å)
1:E:188:ILE:HG21	1:E:226:VAL:HG13	2.03	0.41
1:B:5:GLU:O	1:B:6:ASN:HB2	2.21	0.41
1:B:52:LEU:HD23	1:B:52:LEU:HA	1.90	0.41
1:B:147:TYR:HB2	3:B:1259:NAP:C5N	2.50	0.41
1:F:22:PHE:CE2	1:F:26:LYS:HE2	2.55	0.41
1:H:112[A]:GLU:H	1:H:112[A]:GLU:CD	2.23	0.41
1:H:114:PHE:CD1	1:H:114:PHE:C	2.94	0.41
1:C:103[A]:ARG:HD2	1:C:103[A]:ARG:C	2.41	0.41
1:E:59:GLU:HG3	1:E:61:HIS:CE1	2.56	0.41
1:E:209:LYS:HE2	1:E:209:LYS:HB3	1.93	0.41
1:G:99[A]:MET:C	1:G:101[A]:ASP:N	2.71	0.41
1:C:38:THR:HA	1:C:63:TYR:O	2.21	0.41
1:C:105[B]:ARG:NH2	1:D:177:ASP:O	2.51	0.41
1:E:216:PRO:O	1:H:179:GLY:HA3	2.21	0.41
1:E:42[B]:GLU:OE1	1:E:45:ARG:NH1	2.46	0.40
1:H:3:ASN:ND2	1:H:5:GLU:HG3	2.37	0.40
1:C:96:PHE:HA	4:C:1257:JA1:O3	2.21	0.40
1:C:192:PRO:HA	3:C:1261:NAP:O7N	2.21	0.40
1:G:39:TYR:CZ	1:G:45:ARG:HB2	2.55	0.40
1:A:136:MET:N	1:A:137:PRO:HD3	2.36	0.40
1:B:18:ARG:O	1:B:195:THR:HG22	2.22	0.40

All (2) symmetry-related close contacts are listed below. The label for Atom-2 includes the symmetry operator and encoded unit-cell translations to be applied.

Atom-1	Atom-2	Interatomic distance (Å)	Clash overlap (Å)
1:G:43:ARG:NH1	7:B:2051:HOH:O[1_554]	2.03	0.17
1:C:43:ARG:NH1	7:F:2058:HOH:O[1_545]	2.11	0.09

5.3 Torsion angles [i](#)

5.3.1 Protein backbone [i](#)

In the following table, the Percentiles column shows the percent Ramachandran outliers of the chain as a percentile score with respect to all X-ray entries followed by that with respect to entries of similar resolution.

The Analysed column shows the number of residues for which the backbone conformation was analysed, and the total number of residues.

Mol	Chain	Analysed	Favoured	Allowed	Outliers	Percentiles	
1	A	257/282 (91%)	244 (95%)	12 (5%)	1 (0%)	34	42
1	B	253/282 (90%)	243 (96%)	10 (4%)	0	100	100
1	C	264/282 (94%)	253 (96%)	11 (4%)	0	100	100
1	D	263/282 (93%)	250 (95%)	12 (5%)	1 (0%)	34	42
1	E	256/282 (91%)	246 (96%)	10 (4%)	0	100	100
1	F	261/282 (93%)	246 (94%)	14 (5%)	1 (0%)	34	42
1	G	264/282 (94%)	252 (96%)	12 (4%)	0	100	100
1	H	261/282 (93%)	243 (93%)	18 (7%)	0	100	100
All	All	2079/2256 (92%)	1977 (95%)	99 (5%)	3 (0%)	51	64

All (3) Ramachandran outliers are listed below:

Mol	Chain	Res	Type
1	D	46	LYS
1	F	194	ARG
1	A	194	ARG

5.3.2 Protein sidechains [i](#)

In the following table, the Percentiles column shows the percent sidechain outliers of the chain as a percentile score with respect to all X-ray entries followed by that with respect to entries of similar resolution.

The Analysed column shows the number of residues for which the sidechain conformation was analysed, and the total number of residues.

Mol	Chain	Analysed	Rotameric	Outliers	Percentiles	
1	A	212/234 (91%)	208 (98%)	4 (2%)	57	73
1	B	209/234 (89%)	200 (96%)	9 (4%)	29	40
1	C	218/234 (93%)	207 (95%)	11 (5%)	24	34
1	D	217/234 (93%)	206 (95%)	11 (5%)	24	33
1	E	212/234 (91%)	207 (98%)	5 (2%)	49	66
1	F	215/234 (92%)	208 (97%)	7 (3%)	38	53
1	G	218/234 (93%)	210 (96%)	8 (4%)	34	48
1	H	216/234 (92%)	203 (94%)	13 (6%)	19	26
All	All	1717/1872 (92%)	1649 (96%)	68 (4%)	34	44

All (68) residues with a non-rotameric sidechain are listed below:

Mol	Chain	Res	Type
1	A	50	LYS
1	A	59	GLU
1	A	138	GLU
1	A	210	GLU
1	B	4	LEU
1	B	17	LYS
1	B	50	LYS
1	B	82	LYS
1	B	138	GLU
1	B	199	LYS
1	B	206	THR
1	B	207	ILE
1	B	210	GLU
1	C	47	GLU
1	C	55	LEU
1	C	101[A]	ASP
1	C	101[B]	ASP
1	C	103[A]	ARG
1	C	103[B]	ARG
1	C	105[A]	ARG
1	C	105[B]	ARG
1	C	138	GLU
1	C	237	LEU
1	C	256	LYS
1	D	4	LEU
1	D	47	GLU
1	D	48	LEU
1	D	62	LEU
1	D	99[A]	MET
1	D	99[B]	MET
1	D	103[A]	ARG
1	D	103[B]	ARG
1	D	194	ARG
1	D	209	LYS
1	D	228	LYS
1	E	52	LEU
1	E	79	GLN
1	E	82	LYS
1	E	207	ILE
1	E	237	LEU
1	F	4	LEU
1	F	30	GLN

Continued on next page...

Continued from previous page...

Mol	Chain	Res	Type
1	F	55	LEU
1	F	103[A]	ARG
1	F	103[B]	ARG
1	F	105[A]	ARG
1	F	105[B]	ARG
1	G	34	LYS
1	G	43	ARG
1	G	53	GLU
1	G	55	LEU
1	G	103[A]	ARG
1	G	103[B]	ARG
1	G	112	GLU
1	G	209	LYS
1	H	4	LEU
1	H	7	LYS
1	H	41	LYS
1	H	42	GLU
1	H	43	ARG
1	H	59	GLU
1	H	64	GLN
1	H	78	GLU
1	H	84	VAL
1	H	100[A]	GLU
1	H	100[B]	GLU
1	H	237	LEU
1	H	256	LYS

Sometimes sidechains can be flipped to improve hydrogen bonding and reduce clashes. All (8) such sidechains are listed below:

Mol	Chain	Res	Type
1	A	3	ASN
1	A	79	GLN
1	A	253	HIS
1	B	56	ASN
1	D	155	GLN
1	E	3	ASN
1	E	253	HIS
1	H	155	GLN

5.3.3 RNA [i](#)

There are no RNA molecules in this entry.

5.4 Non-standard residues in protein, DNA, RNA chains [i](#)

There are no non-standard protein/DNA/RNA residues in this entry.

5.5 Carbohydrates [i](#)

There are no monosaccharides in this entry.

5.6 Ligand geometry [i](#)

29 ligands are modelled in this entry.

In the following table, the Counts columns list the number of bonds (or angles) for which Mogul statistics could be retrieved, the number of bonds (or angles) that are observed in the model and the number of bonds (or angles) that are defined in the Chemical Component Dictionary. The Link column lists molecule types, if any, to which the group is linked. The Z score for a bond length (or angle) is the number of standard deviations the observed value is removed from the expected value. A bond length (or angle) with $|Z| > 2$ is considered an outlier worth inspection. RMSZ is the root-mean-square of all Z scores of the bond lengths (or angles).

Mol	Type	Chain	Res	Link	Bond lengths			Bond angles		
					Counts	RMSZ	# Z > 2	Counts	RMSZ	# Z > 2
3	NAP	B	1259	-	45,52,52	1.52	4 (8%)	56,80,80	1.70	9 (16%)
4	JA1	G	1257	-	23,24,24	0.27	0	29,31,31	0.59	0
4	JA1	H	1257	-	23,24,24	0.26	0	29,31,31	0.63	0
3	NAP	F	1259	-	45,52,52	1.59	3 (6%)	56,80,80	1.52	6 (10%)
5	GLU	F	1257	-	8,9,9	1.18	0	10,11,11	1.03	0
3	NAP	E	1261	-	45,52,52	1.57	3 (6%)	56,80,80	1.75	10 (17%)
3	NAP	G	1260	-	45,52,52	1.65	5 (11%)	56,80,80	1.52	6 (10%)
6	MRD	B	1258	-	7,7,7	0.34	0	9,10,10	0.56	0
2	MPD	F	1258	-	7,7,7	0.50	0	9,10,10	0.61	0
2	MPD	A	1257	-	7,7,7	0.39	0	9,10,10	0.48	0
4	JA1	E	1258	-	23,24,24	0.22	0	29,31,31	0.65	0
4	JA1	B	1257	-	23,24,24	0.24	0	29,31,31	0.70	0
5	GLU	B	1001	-	8,9,9	1.14	0	10,11,11	1.03	0
5	GLU	G	1258	-	8,9,9	1.28	1 (12%)	10,11,11	1.10	1 (10%)
2	MPD	G	1259	-	7,7,7	0.45	0	9,10,10	0.46	0
3	NAP	C	1261	-	45,52,52	1.60	3 (6%)	56,80,80	1.43	3 (5%)

Mol	Type	Chain	Res	Link	Bond lengths			Bond angles		
					Counts	RMSZ	# Z > 2	Counts	RMSZ	# Z > 2
2	MPD	H	1258	-	7,7,7	0.46	0	9,10,10	0.68	0
5	GLU	E	1259	-	8,9,9	1.08	0	10,11,11	1.44	1 (10%)
5	GLU	C	1259	-	8,9,9	1.26	0	10,11,11	0.86	0
4	JA1	A	1259	-	23,24,24	0.22	0	29,31,31	0.67	0
2	MPD	D	1257	-	7,7,7	0.45	0	9,10,10	0.77	0
3	NAP	H	1259	-	45,52,52	1.70	4 (8%)	56,80,80	1.50	6 (10%)
2	MPD	C	1260	-	7,7,7	0.37	0	9,10,10	0.62	0
2	MPD	E	1260	-	7,7,7	0.47	0	9,10,10	0.49	0
4	JA1	C	1257	-	23,24,24	0.25	0	29,31,31	0.64	0
3	NAP	D	1258	-	45,52,52	1.66	4 (8%)	56,80,80	1.50	7 (12%)
4	JA1	C	1258	-	23,24,24	0.27	0	29,31,31	0.62	0
3	NAP	A	1258	-	45,52,52	1.71	3 (6%)	56,80,80	1.43	6 (10%)
4	JA1	E	1257	-	23,24,24	0.34	0	29,31,31	0.63	0

In the following table, the Chirals column lists the number of chiral outliers, the number of chiral centers analysed, the number of these observed in the model and the number defined in the Chemical Component Dictionary. Similar counts are reported in the Torsion and Rings columns. '-' means no outliers of that kind were identified.

Mol	Type	Chain	Res	Link	Chirals	Torsions	Rings
3	NAP	B	1259	-	-	4/31/67/67	0/5/5/5
4	JA1	G	1257	-	-	1/12/14/14	0/2/2/2
4	JA1	H	1257	-	-	2/12/14/14	0/2/2/2
3	NAP	F	1259	-	-	5/31/67/67	0/5/5/5
5	GLU	F	1257	-	-	0/9/9/9	-
3	NAP	E	1261	-	-	7/31/67/67	0/5/5/5
3	NAP	G	1260	-	-	6/31/67/67	0/5/5/5
6	MRD	B	1258	-	-	2/5/5/5	-
2	MPD	F	1258	-	-	2/5/5/5	-
2	MPD	A	1257	-	-	2/5/5/5	-
4	JA1	E	1258	-	-	0/12/14/14	0/2/2/2
4	JA1	B	1257	-	-	1/12/14/14	0/2/2/2
5	GLU	B	1001	-	-	2/9/9/9	-
5	GLU	G	1258	-	-	9/9/9/9	-
2	MPD	G	1259	-	-	2/5/5/5	-
3	NAP	C	1261	-	-	5/31/67/67	0/5/5/5
2	MPD	H	1258	-	-	2/5/5/5	-
5	GLU	E	1259	-	-	3/9/9/9	-

Continued on next page...

Continued from previous page...

Mol	Type	Chain	Res	Link	Chirals	Torsions	Rings
5	GLU	C	1259	-	-	2/9/9/9	-
4	JA1	A	1259	-	-	1/12/14/14	0/2/2/2
2	MPD	D	1257	-	-	1/5/5/5	-
3	NAP	H	1259	-	-	6/31/67/67	0/5/5/5
2	MPD	C	1260	-	-	2/5/5/5	-
2	MPD	E	1260	-	-	5/5/5/5	-
4	JA1	C	1257	-	-	3/12/14/14	0/2/2/2
3	NAP	D	1258	-	-	6/31/67/67	0/5/5/5
4	JA1	C	1258	-	-	1/12/14/14	0/2/2/2
3	NAP	A	1258	-	-	6/31/67/67	0/5/5/5
4	JA1	E	1257	-	-	1/12/14/14	0/2/2/2

All (30) bond length outliers are listed below:

Mol	Chain	Res	Type	Atoms	Z	Observed(Å)	Ideal(Å)
3	A	1258	NAP	O7N-C7N	8.49	1.40	1.24
3	D	1258	NAP	O7N-C7N	8.47	1.40	1.24
3	H	1259	NAP	O7N-C7N	8.38	1.40	1.24
3	C	1261	NAP	O7N-C7N	8.32	1.40	1.24
3	F	1259	NAP	O7N-C7N	8.22	1.39	1.24
3	G	1260	NAP	O7N-C7N	8.05	1.39	1.24
3	E	1261	NAP	O7N-C7N	7.82	1.39	1.24
3	B	1259	NAP	O7N-C7N	7.73	1.38	1.24
3	H	1259	NAP	C2A-N3A	4.18	1.38	1.32
3	D	1258	NAP	C2A-N3A	3.90	1.38	1.32
3	F	1259	NAP	C2A-N3A	3.88	1.38	1.32
3	A	1258	NAP	C2A-N3A	3.79	1.38	1.32
3	E	1261	NAP	C2A-N3A	3.64	1.38	1.32
3	C	1261	NAP	C2A-N3A	3.37	1.37	1.32
3	G	1260	NAP	C2A-N3A	3.37	1.37	1.32
3	B	1259	NAP	C2A-N3A	3.12	1.37	1.32
3	H	1259	NAP	C2A-N1A	2.82	1.39	1.33
3	G	1260	NAP	P2B-O2B	2.77	1.64	1.59
3	A	1258	NAP	C2A-N1A	2.73	1.39	1.33
3	G	1260	NAP	C2A-N1A	2.70	1.38	1.33
3	C	1261	NAP	C2A-N1A	2.46	1.38	1.33
3	G	1260	NAP	C2N-N1N	2.45	1.37	1.35
3	B	1259	NAP	C2A-N1A	2.32	1.38	1.33
3	D	1258	NAP	C2N-N1N	2.24	1.37	1.35
3	E	1261	NAP	C2A-N1A	2.14	1.37	1.33
3	B	1259	NAP	P2B-O2B	2.12	1.63	1.59

Continued on next page...

Continued from previous page...

Mol	Chain	Res	Type	Atoms	Z	Observed(Å)	Ideal(Å)
3	H	1259	NAP	C2N-N1N	2.12	1.37	1.35
5	G	1258	GLU	CG-CD	2.06	1.55	1.50
3	F	1259	NAP	C2A-N1A	2.06	1.37	1.33
3	D	1258	NAP	C2A-N1A	2.04	1.37	1.33

All (55) bond angle outliers are listed below:

Mol	Chain	Res	Type	Atoms	Z	Observed(°)	Ideal(°)
3	E	1261	NAP	N3A-C2A-N1A	-6.72	118.17	128.68
3	E	1261	NAP	C3N-C7N-N7N	6.46	125.50	117.75
3	B	1259	NAP	C3N-C7N-N7N	6.29	125.30	117.75
3	D	1258	NAP	N3A-C2A-N1A	-6.16	119.05	128.68
3	H	1259	NAP	N3A-C2A-N1A	-6.12	119.12	128.68
3	B	1259	NAP	O7N-C7N-C3N	-5.67	112.85	119.63
3	C	1261	NAP	N3A-C2A-N1A	-5.66	119.83	128.68
3	G	1260	NAP	N3A-C2A-N1A	-5.61	119.91	128.68
3	A	1258	NAP	N3A-C2A-N1A	-5.52	120.04	128.68
3	F	1259	NAP	C3N-C7N-N7N	5.44	124.27	117.75
3	G	1260	NAP	C3N-C7N-N7N	5.39	124.21	117.75
3	B	1259	NAP	N3A-C2A-N1A	-5.14	120.64	128.68
3	H	1259	NAP	C3N-C7N-N7N	5.00	123.76	117.75
3	F	1259	NAP	O7N-C7N-C3N	-4.81	113.87	119.63
3	F	1259	NAP	N3A-C2A-N1A	-4.77	121.22	128.68
3	D	1258	NAP	C3N-C7N-N7N	4.31	122.92	117.75
3	A	1258	NAP	O4D-C1D-C2D	-4.05	101.01	106.93
3	A	1258	NAP	C3N-C7N-N7N	3.98	122.53	117.75
3	C	1261	NAP	C3N-C7N-N7N	3.94	122.48	117.75
3	E	1261	NAP	O7N-C7N-C3N	-3.46	115.49	119.63
3	G	1260	NAP	O7N-C7N-C3N	-3.34	115.64	119.63
3	D	1258	NAP	O4D-C1D-C2D	-3.18	102.28	106.93
3	F	1259	NAP	O4B-C1B-C2B	-3.14	101.14	106.59
3	C	1261	NAP	O7N-C7N-C3N	-2.96	116.08	119.63
3	H	1259	NAP	O7N-C7N-N7N	-2.86	118.52	122.58
3	D	1258	NAP	O4B-C1B-C2B	-2.82	101.69	106.59
3	E	1261	NAP	O4D-C1D-C2D	-2.78	102.87	106.93
3	A	1258	NAP	O2N-PN-O1N	2.74	125.81	112.24
3	E	1261	NAP	O4B-C1B-C2B	-2.68	101.93	106.59
3	B	1259	NAP	C3N-C2N-N1N	-2.59	117.89	120.43
3	G	1260	NAP	C4A-C5A-N7A	-2.56	106.73	109.40
3	E	1261	NAP	C6N-N1N-C2N	-2.52	119.68	121.97
3	B	1259	NAP	O2N-PN-O1N	2.52	124.68	112.24
3	E	1261	NAP	O7N-C7N-N7N	-2.51	119.01	122.58

Continued on next page...

Continued from previous page...

Mol	Chain	Res	Type	Atoms	Z	Observed(°)	Ideal(°)
3	E	1261	NAP	O5B-C5B-C4B	-2.51	100.37	108.99
3	D	1258	NAP	O5B-C5B-C4B	-2.45	100.56	108.99
3	F	1259	NAP	C3D-C2D-C1D	-2.44	97.30	100.98
3	B	1259	NAP	O5B-C5B-C4B	-2.41	100.69	108.99
3	E	1261	NAP	O2N-PN-O1N	2.39	124.07	112.24
3	B	1259	NAP	O4D-C1D-C2D	-2.38	103.45	106.93
3	F	1259	NAP	O2N-PN-O1N	2.37	123.96	112.24
5	E	1259	GLU	CB-CA-C	2.34	115.89	110.30
3	E	1261	NAP	C2A-N1A-C6A	2.34	122.76	118.75
3	D	1258	NAP	O7N-C7N-N7N	-2.31	119.29	122.58
3	B	1259	NAP	C2N-C3N-C4N	2.30	120.86	118.26
3	A	1258	NAP	O7N-C7N-C3N	-2.29	116.89	119.63
3	H	1259	NAP	O2N-PN-O1N	2.27	123.47	112.24
3	B	1259	NAP	O4B-C1B-C2B	-2.27	102.65	106.59
3	D	1258	NAP	O2N-PN-O1N	2.21	123.18	112.24
3	H	1259	NAP	C1B-N9A-C4A	-2.17	122.84	126.64
3	A	1258	NAP	C1B-N9A-C4A	-2.12	122.92	126.64
3	H	1259	NAP	O5B-C5B-C4B	-2.10	101.78	108.99
3	G	1260	NAP	O2N-PN-O1N	2.09	122.58	112.24
5	G	1258	GLU	OE1-CD-CG	-2.04	116.54	123.08
3	G	1260	NAP	C3D-C2D-C1D	-2.02	97.94	100.98

There are no chirality outliers.

All (89) torsion outliers are listed below:

Mol	Chain	Res	Type	Atoms
2	A	1257	MPD	C2-C3-C4-O4
2	E	1260	MPD	C1-C2-C3-C4
2	F	1258	MPD	C2-C3-C4-O4
2	G	1259	MPD	C2-C3-C4-O4
2	H	1258	MPD	C2-C3-C4-O4
3	A	1258	NAP	PN-O3-PA-O5B
3	A	1258	NAP	C5D-O5D-PN-O1N
3	A	1258	NAP	C5D-O5D-PN-O2N
3	A	1258	NAP	O4D-C1D-N1N-C2N
3	B	1259	NAP	C5D-O5D-PN-O3
3	B	1259	NAP	C5D-O5D-PN-O1N
3	B	1259	NAP	O4D-C1D-N1N-C2N
3	C	1261	NAP	PN-O3-PA-O5B
3	C	1261	NAP	C5D-O5D-PN-O1N
3	D	1258	NAP	C5D-O5D-PN-O1N
3	D	1258	NAP	C5D-O5D-PN-O2N

Continued on next page...

Continued from previous page...

Mol	Chain	Res	Type	Atoms
3	D	1258	NAP	O4D-C1D-N1N-C2N
3	E	1261	NAP	C5D-O5D-PN-O1N
3	E	1261	NAP	C5D-O5D-PN-O2N
3	E	1261	NAP	O4D-C1D-N1N-C2N
3	F	1259	NAP	PN-O3-PA-O5B
3	F	1259	NAP	C5D-O5D-PN-O1N
3	G	1260	NAP	C5D-O5D-PN-O3
3	G	1260	NAP	C5D-O5D-PN-O1N
3	G	1260	NAP	O4D-C1D-N1N-C2N
3	H	1259	NAP	C5D-O5D-PN-O1N
3	H	1259	NAP	C5D-O5D-PN-O2N
3	H	1259	NAP	O4D-C1D-N1N-C2N
5	G	1258	GLU	C-CA-CB-CG
6	B	1258	MRD	C2-C3-C4-O4
5	G	1258	GLU	CA-CB-CG-CD
5	G	1258	GLU	OXT-C-CA-CB
4	C	1257	JA1	C10-C11-C12-C13
4	H	1257	JA1	C12-C13-C14-C15
4	H	1257	JA1	C11-C12-C13-C14
5	G	1258	GLU	OXT-C-CA-N
5	G	1258	GLU	O-C-CA-CB
5	B	1001	GLU	CA-CB-CG-CD
5	E	1259	GLU	CA-CB-CG-CD
5	G	1258	GLU	O-C-CA-N
2	E	1260	MPD	O2-C2-C3-C4
3	D	1258	NAP	PN-O3-PA-O5B
3	E	1261	NAP	PN-O3-PA-O5B
3	G	1260	NAP	PN-O3-PA-O5B
3	H	1259	NAP	PN-O3-PA-O5B
5	B	1001	GLU	C-CA-CB-CG
3	C	1261	NAP	C5D-O5D-PN-O3
3	F	1259	NAP	C5D-O5D-PN-O3
3	G	1260	NAP	C2B-O2B-P2B-O3X
2	C	1260	MPD	C2-C3-C4-C5
2	D	1257	MPD	C2-C3-C4-C5
2	E	1260	MPD	C2-C3-C4-C5
2	F	1258	MPD	C2-C3-C4-C5
2	G	1259	MPD	C2-C3-C4-C5
2	H	1258	MPD	C2-C3-C4-C5
5	C	1259	GLU	CA-CB-CG-CD
4	C	1257	JA1	C11-C12-C13-C14
2	E	1260	MPD	C2-C3-C4-O4

Continued on next page...

Continued from previous page...

Mol	Chain	Res	Type	Atoms
2	E	1260	MPD	CM-C2-C3-C4
4	B	1257	JA1	C12-C13-C14-C15
5	E	1259	GLU	OE1-CD-CG-CB
5	G	1258	GLU	OE2-CD-CG-CB
5	E	1259	GLU	OE2-CD-CG-CB
3	F	1259	NAP	O4B-C4B-C5B-O5B
5	G	1258	GLU	OE1-CD-CG-CB
4	C	1257	JA1	C13-C14-C15-C16
4	C	1258	JA1	C10-C11-C12-C13
4	A	1259	JA1	C12-C13-C14-C15
4	G	1257	JA1	C11-C12-C13-C14
3	A	1258	NAP	C5D-O5D-PN-O3
3	D	1258	NAP	C5D-O5D-PN-O3
3	E	1261	NAP	C2B-O2B-P2B-O3X
3	E	1261	NAP	C5D-O5D-PN-O3
3	H	1259	NAP	C5D-O5D-PN-O3
3	B	1259	NAP	O4B-C4B-C5B-O5B
3	G	1260	NAP	O4B-C4B-C5B-O5B
2	A	1257	MPD	C2-C3-C4-C5
6	B	1258	MRD	C2-C3-C4-C5
3	C	1261	NAP	C5D-O5D-PN-O2N
3	F	1259	NAP	C5D-O5D-PN-O2N
3	A	1258	NAP	O4B-C4B-C5B-O5B
3	C	1261	NAP	O4B-C4B-C5B-O5B
3	D	1258	NAP	O4B-C4B-C5B-O5B
3	E	1261	NAP	O4B-C4B-C5B-O5B
3	H	1259	NAP	O4B-C4B-C5B-O5B
5	C	1259	GLU	N-CA-CB-CG
5	G	1258	GLU	N-CA-CB-CG
4	E	1257	JA1	C12-C13-C14-C15
2	C	1260	MPD	C2-C3-C4-O4

There are no ring outliers.

16 monomers are involved in 41 short contacts:

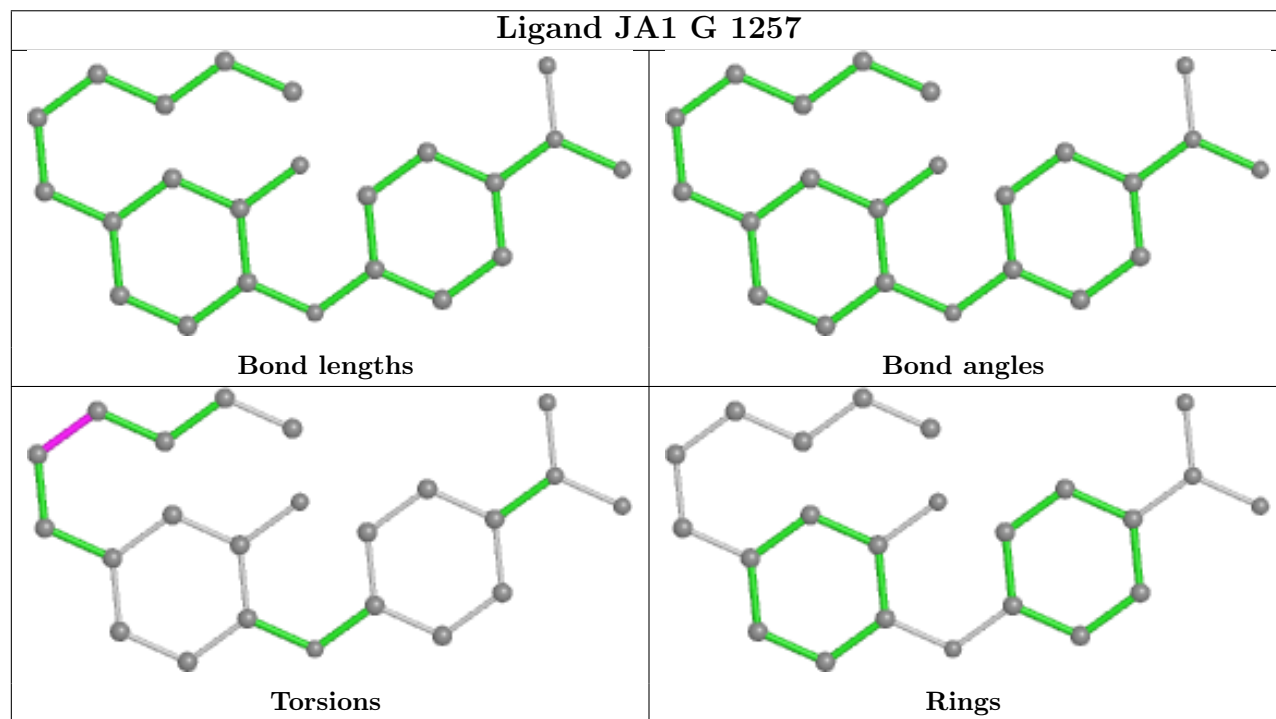
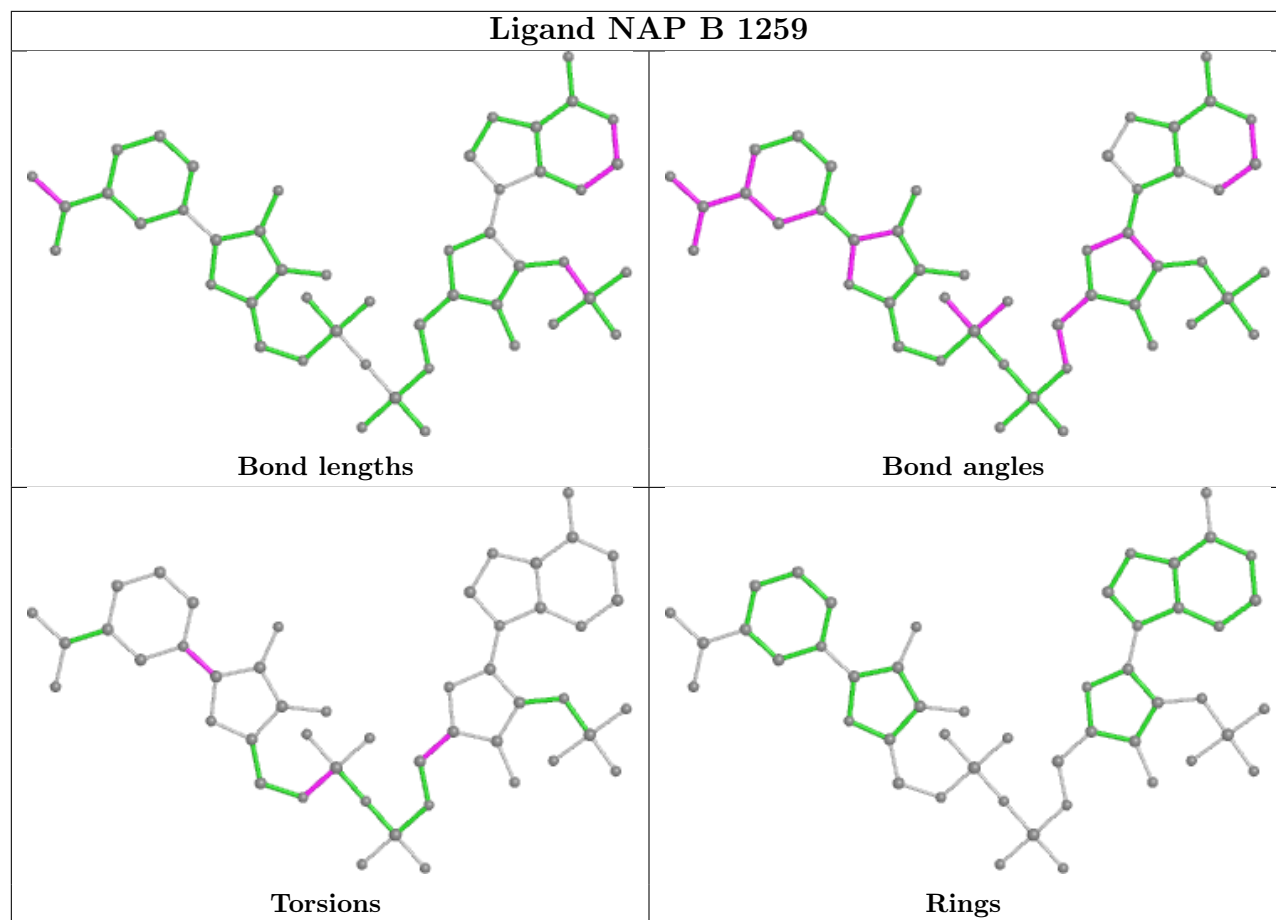
Mol	Chain	Res	Type	Clashes	Symm-Clashes
3	B	1259	NAP	1	0
4	G	1257	JA1	1	0
3	F	1259	NAP	3	0
3	E	1261	NAP	1	0
6	B	1258	MRD	1	0
2	A	1257	MPD	3	0

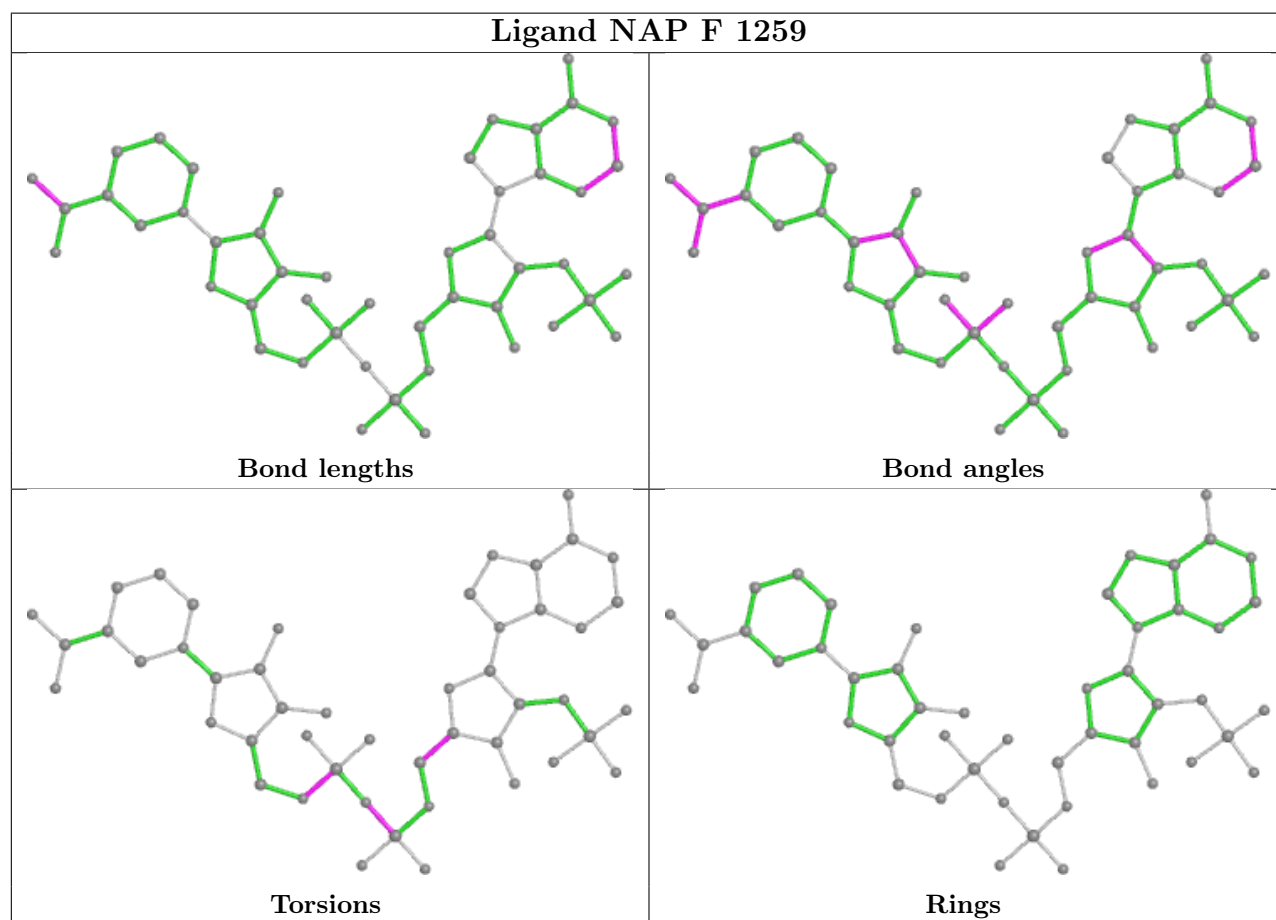
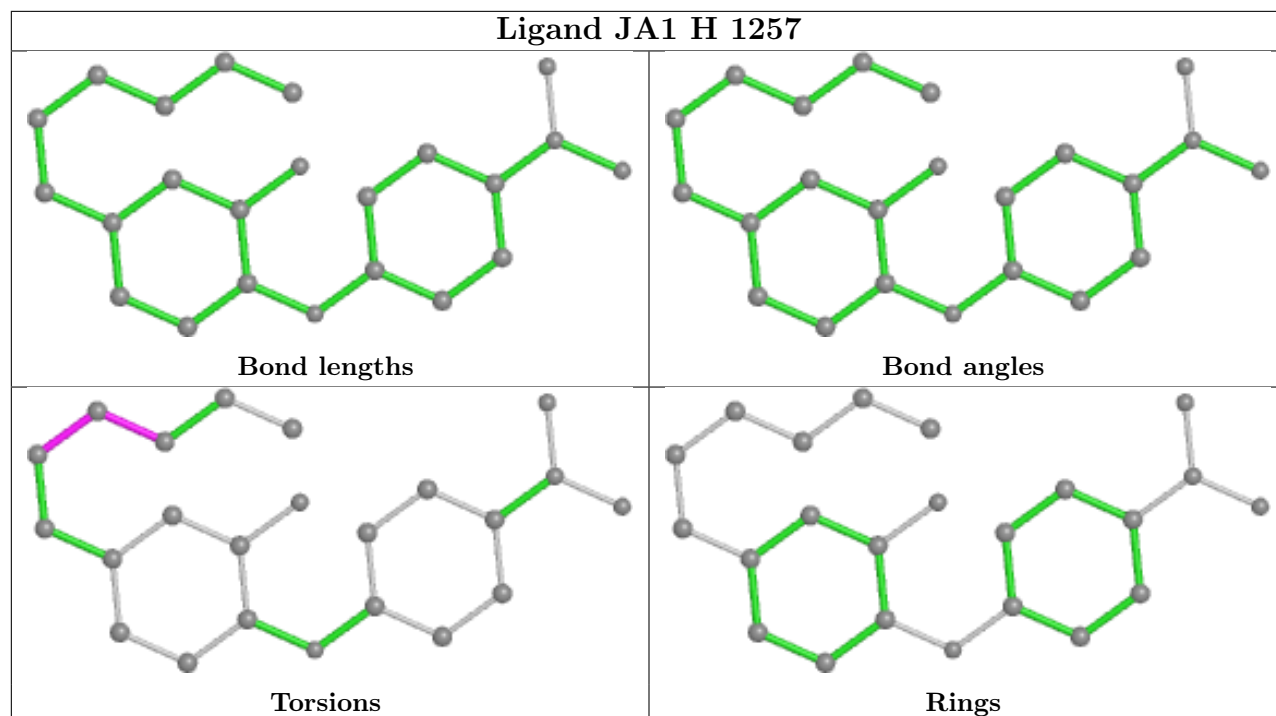
Continued on next page...

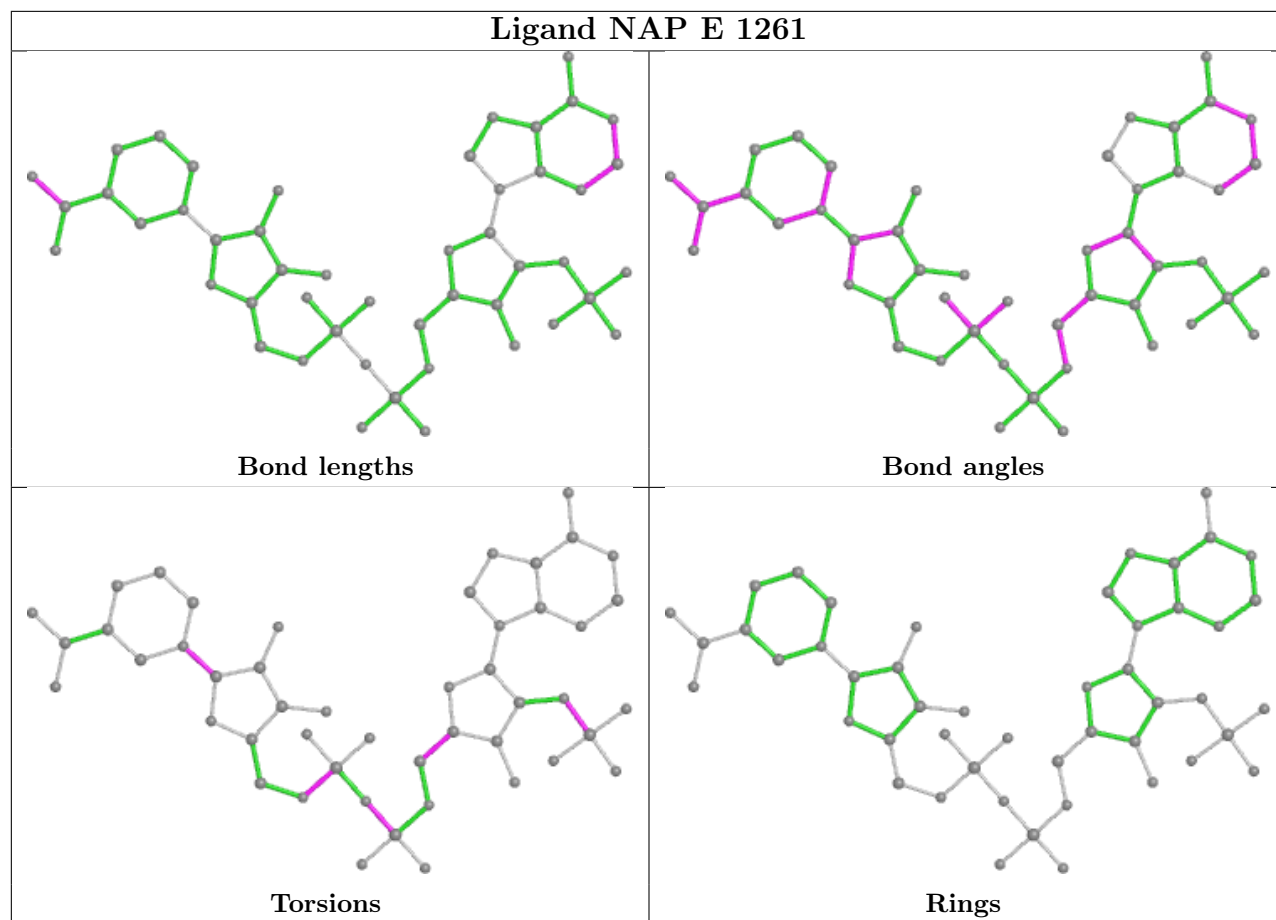
Continued from previous page...

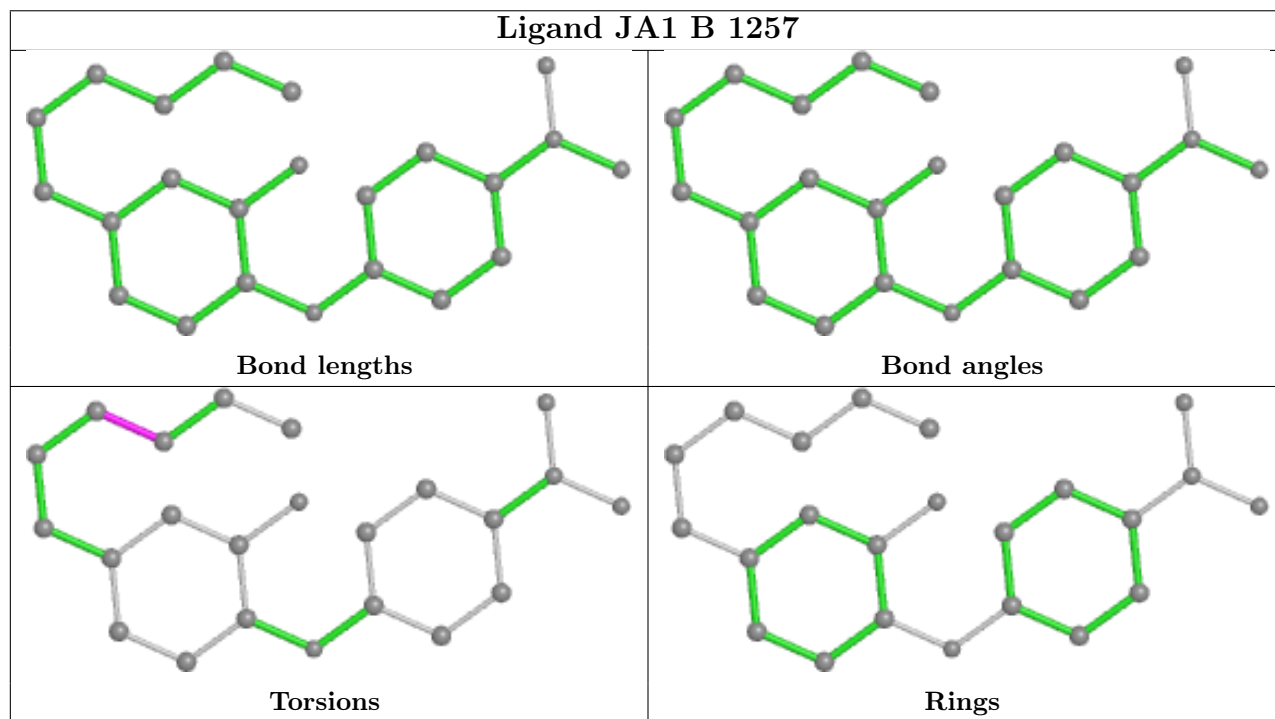
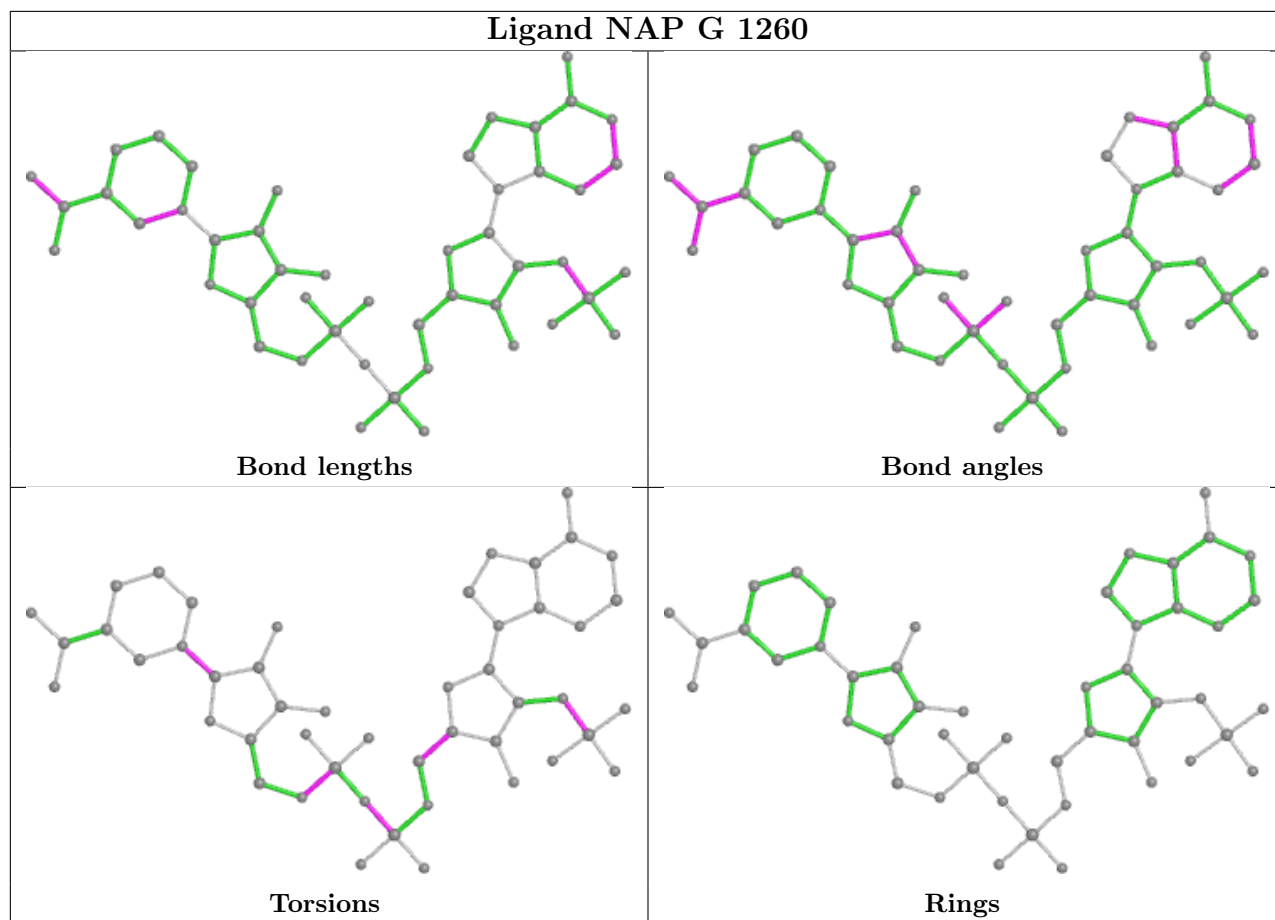
Mol	Chain	Res	Type	Clashes	Symm-Clashes
5	G	1258	GLU	5	0
2	G	1259	MPD	1	0
3	C	1261	NAP	3	0
2	H	1258	MPD	7	0
4	A	1259	JA1	1	0
2	D	1257	MPD	1	0
2	E	1260	MPD	6	0
4	C	1257	JA1	6	0
3	A	1258	NAP	1	0
4	E	1257	JA1	1	0

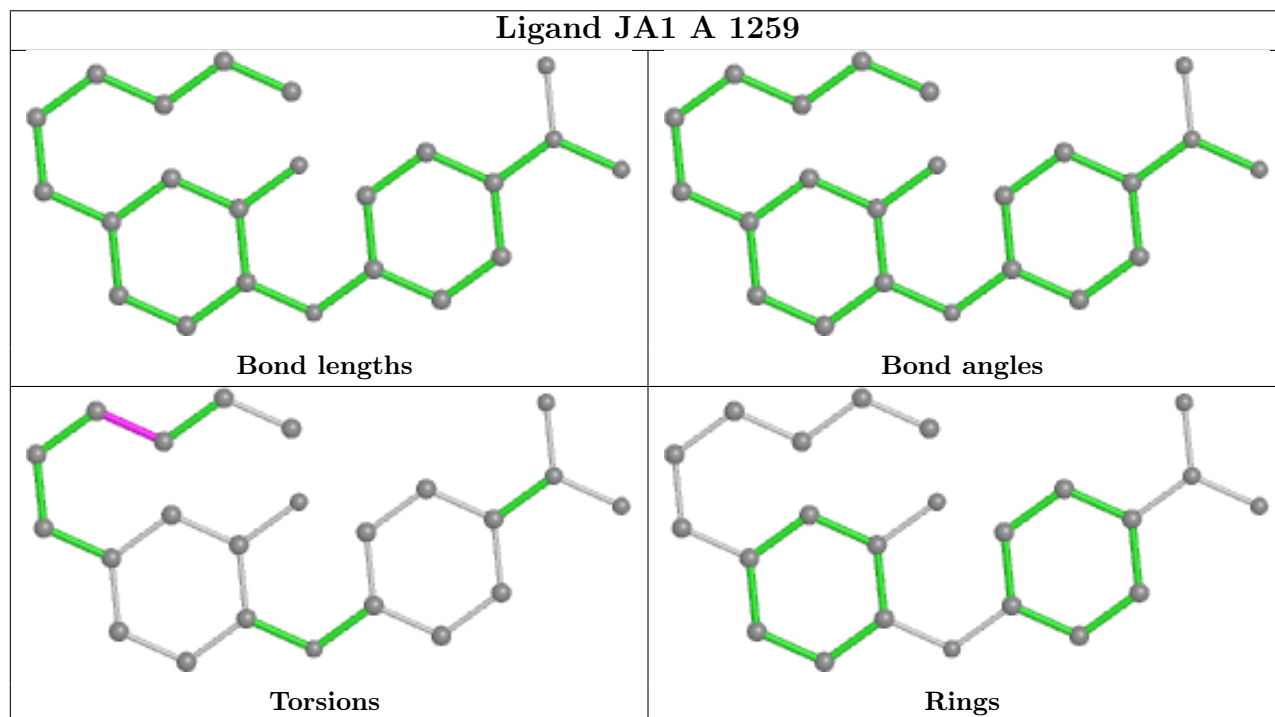
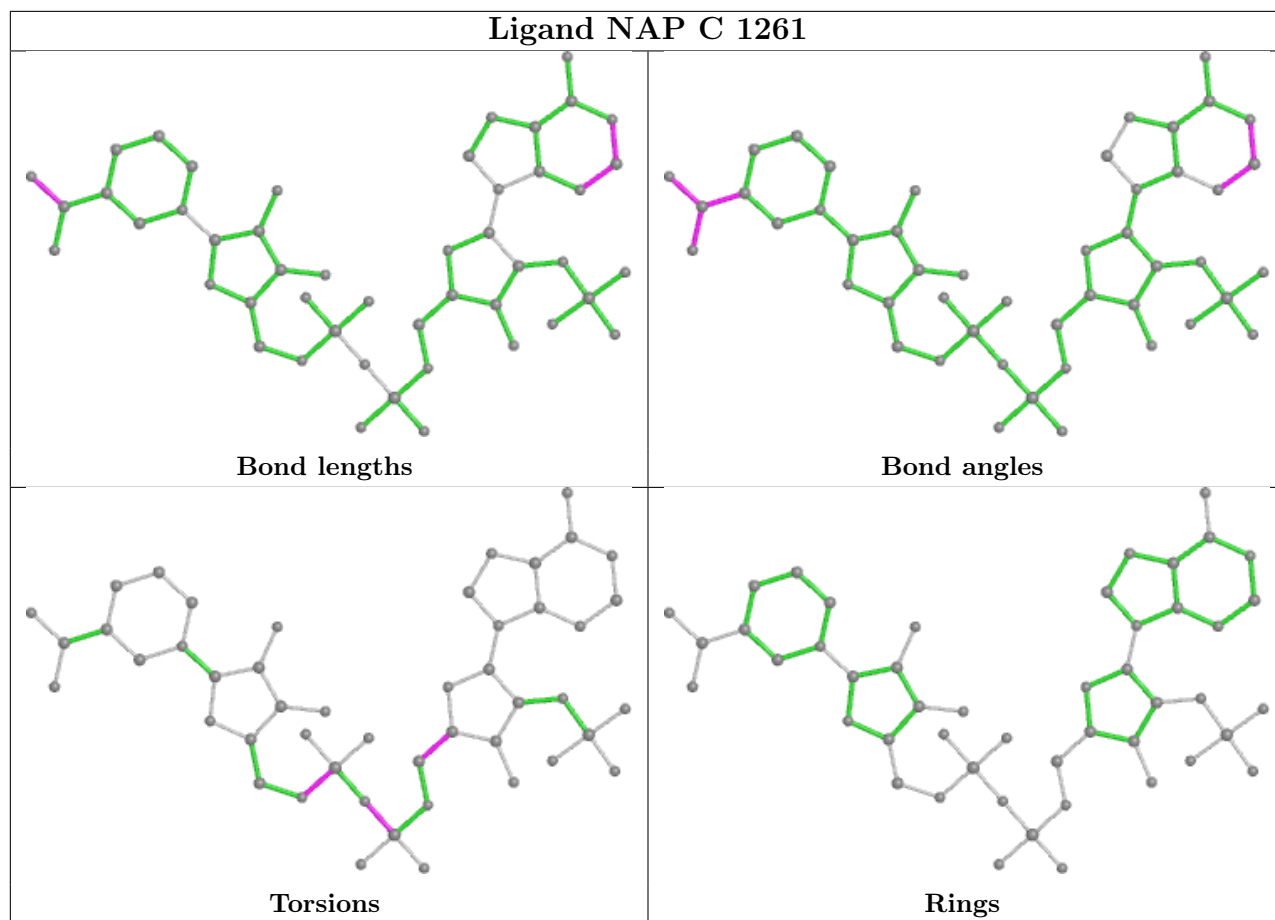
The following is a two-dimensional graphical depiction of Mogul quality analysis of bond lengths, bond angles, torsion angles, and ring geometry for all instances of the Ligand of Interest. In addition, ligands with molecular weight > 250 and outliers as shown on the validation Tables will also be included. For torsion angles, if less than 5% of the Mogul distribution of torsion angles is within 10 degrees of the torsion angle in question, then that torsion angle is considered an outlier. Any bond that is central to one or more torsion angles identified as an outlier by Mogul will be highlighted in the graph. For rings, the root-mean-square deviation (RMSD) between the ring in question and similar rings identified by Mogul is calculated over all ring torsion angles. If the average RMSD is greater than 60 degrees and the minimal RMSD between the ring in question and any Mogul-identified rings is also greater than 60 degrees, then that ring is considered an outlier. The outliers are highlighted in purple. The color gray indicates Mogul did not find sufficient equivalents in the CSD to analyse the geometry.

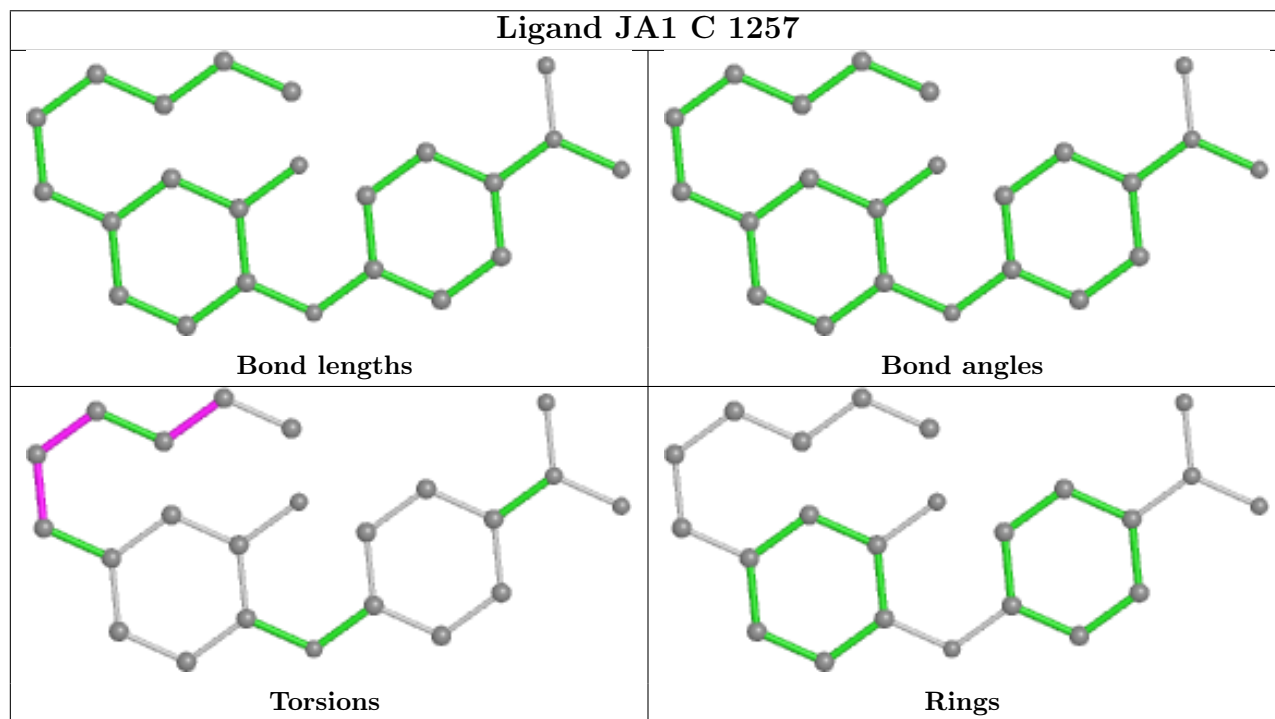
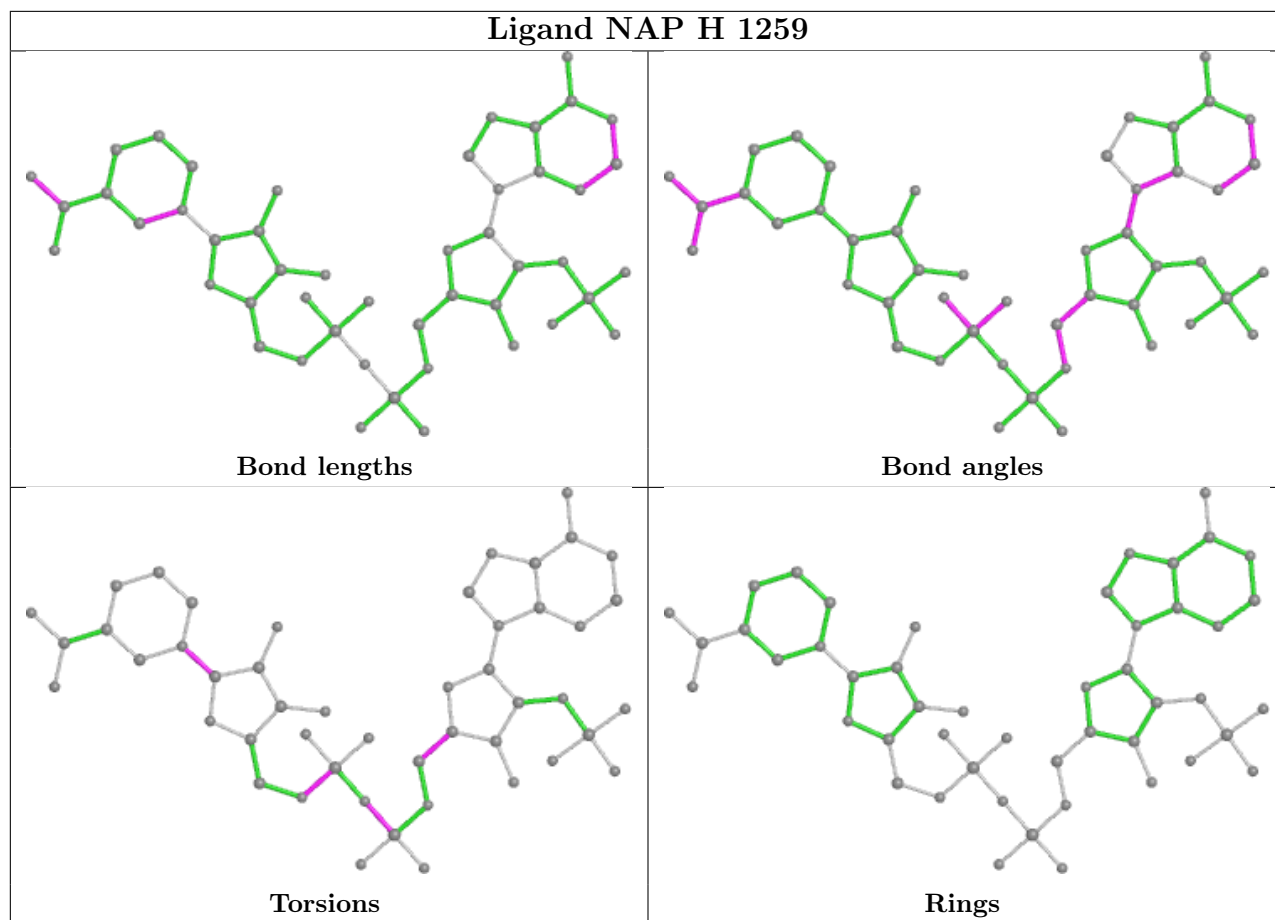


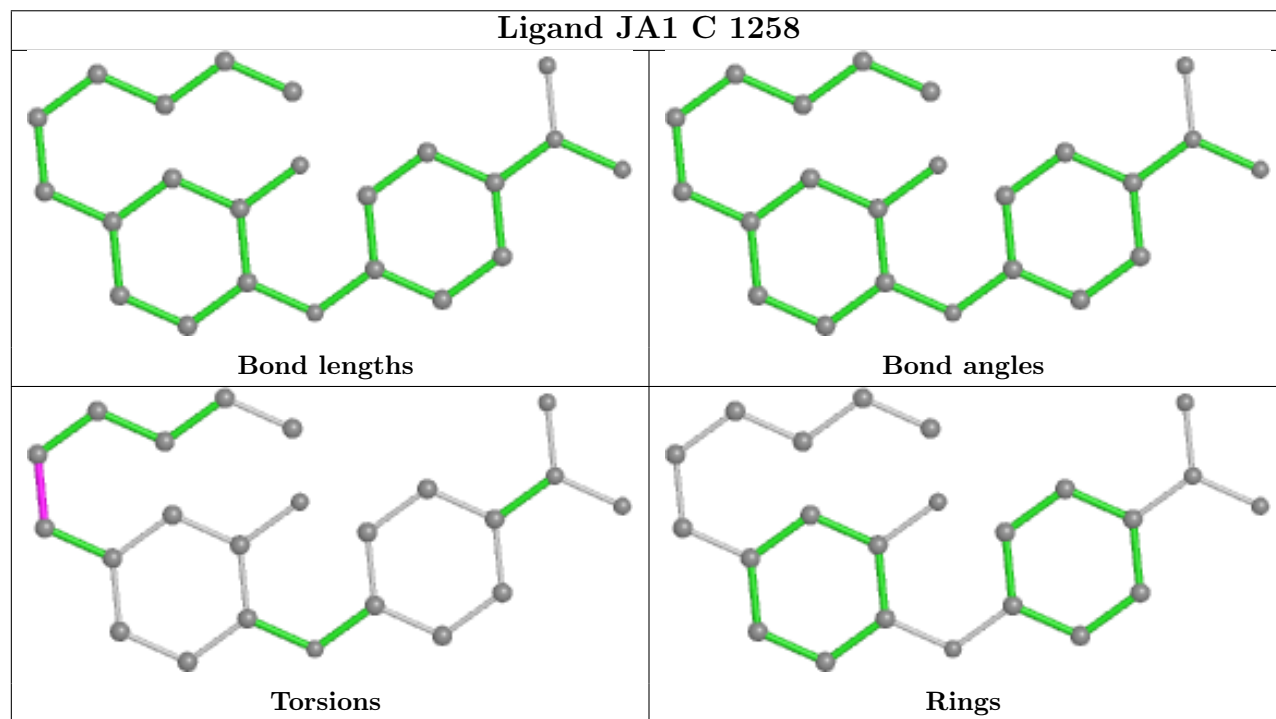
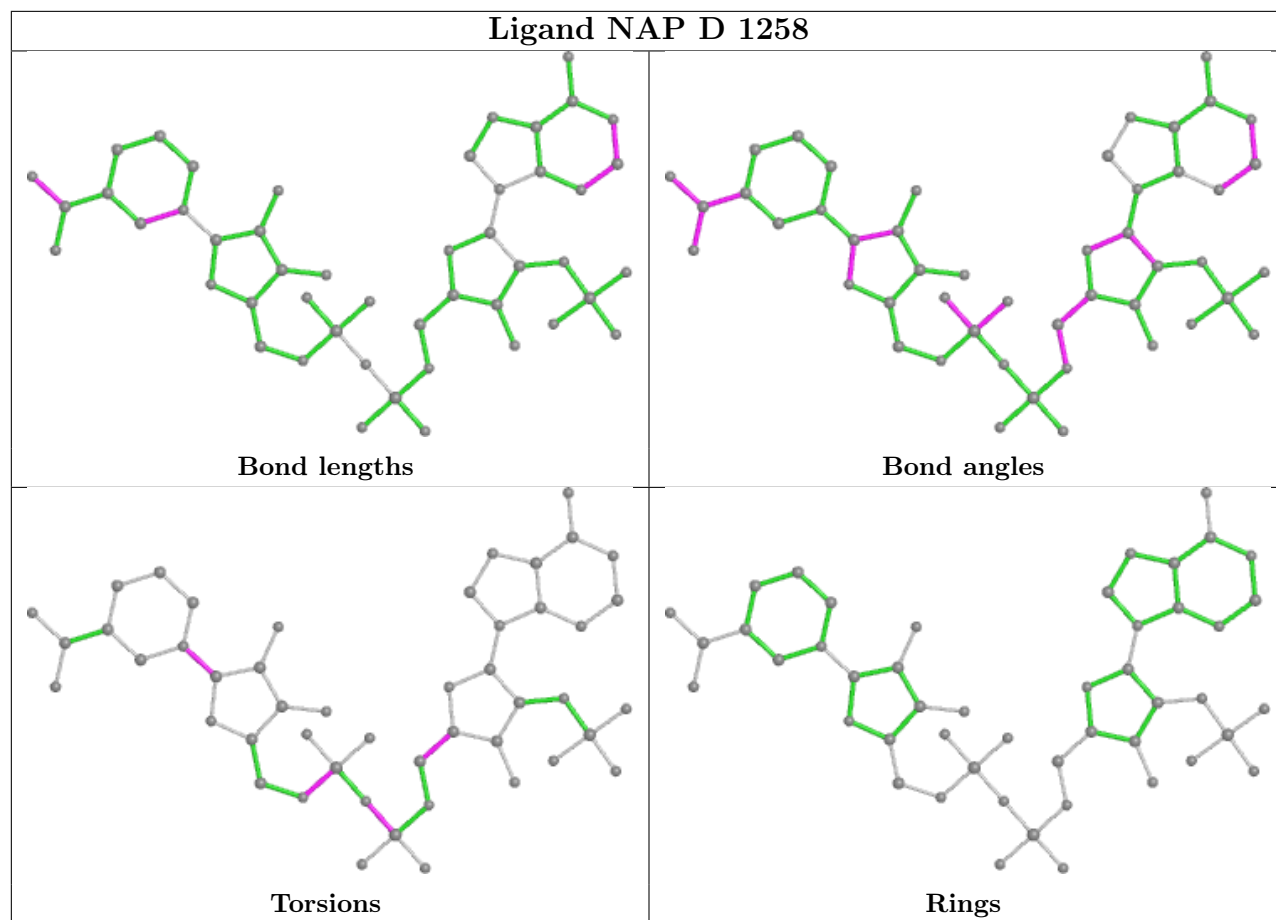


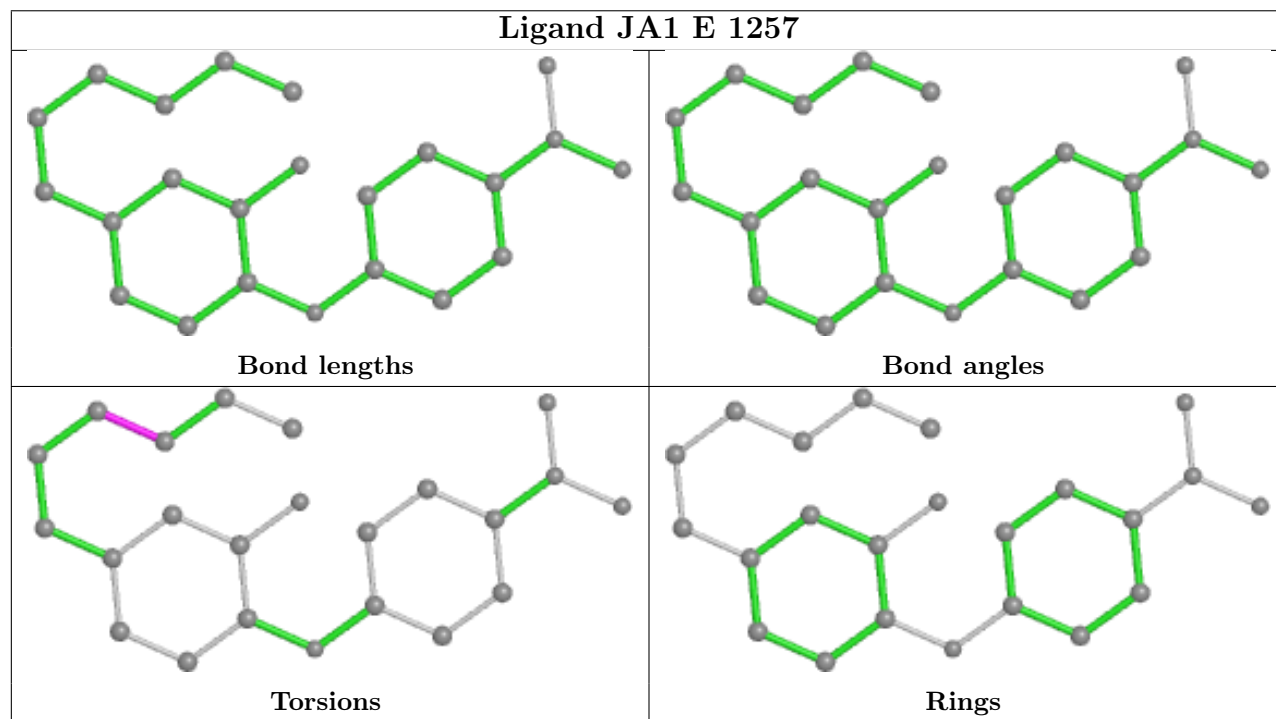
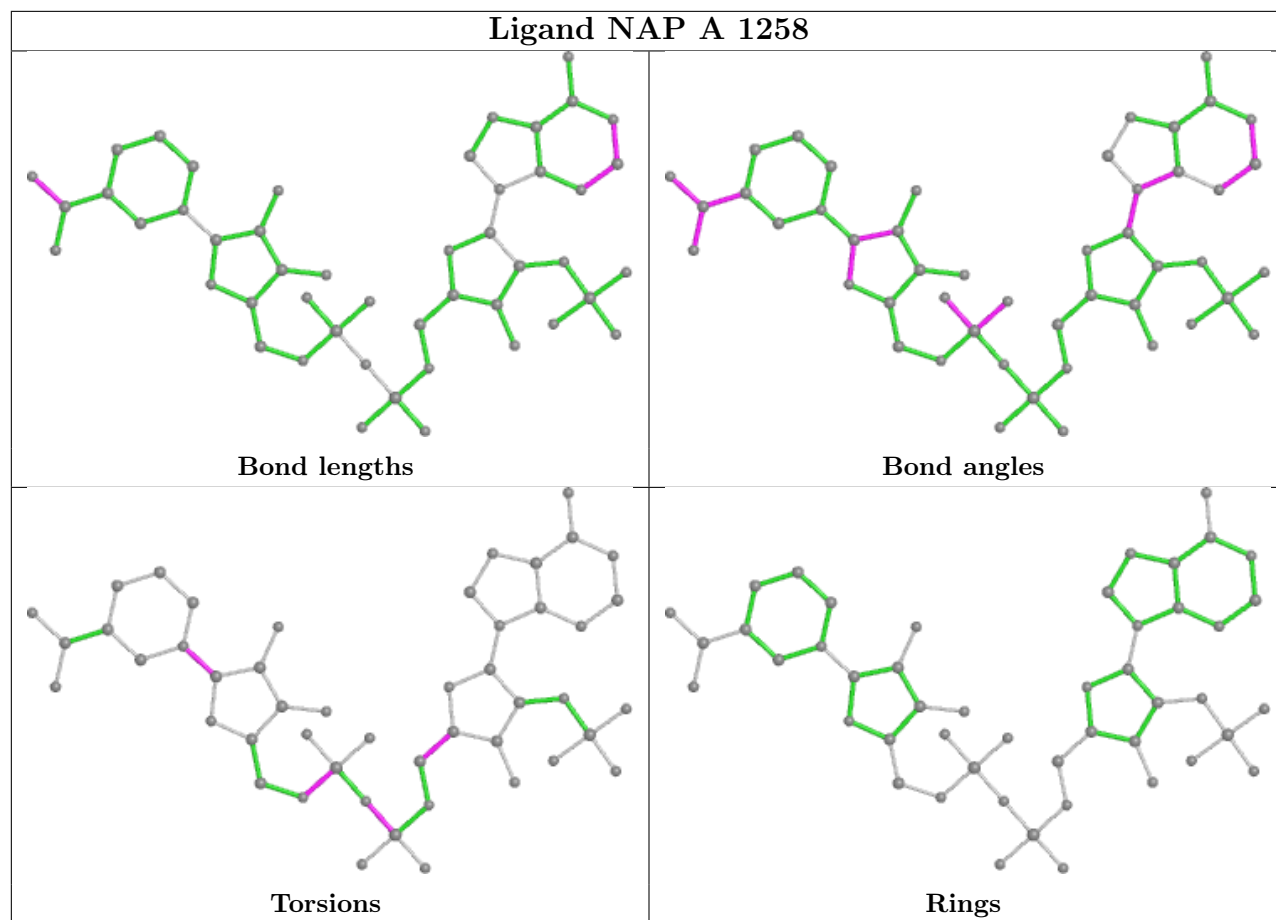












5.7 Other polymers [i](#)

There are no such residues in this entry.

5.8 Polymer linkage issues [i](#)

There are no chain breaks in this entry.

6 Fit of model and data

6.1 Protein, DNA and RNA chains

In the following table, the column labelled ‘#RSRZ > 2’ contains the number (and percentage) of RSRZ outliers, followed by percent RSRZ outliers for the chain as percentile scores relative to all X-ray entries and entries of similar resolution. The OWAB column contains the minimum, median, 95th percentile and maximum values of the occupancy-weighted average B-factor per residue. The column labelled ‘Q < 0.9’ lists the number of (and percentage) of residues with an average occupancy less than 0.9.

Mol	Chain	Analysed	<RSRZ>	#RSRZ>2	OWAB(Å ²)	Q<0.9
1	A	254/282 (90%)	-0.45	0 100 100	22, 33, 54, 69	0
1	B	254/282 (90%)	-0.40	0 100 100	24, 35, 58, 69	0
1	C	254/282 (90%)	-0.38	2 (0%) 86 89	26, 36, 55, 68	0
1	D	254/282 (90%)	-0.15	5 (1%) 65 71	26, 39, 72, 87	0
1	E	254/282 (90%)	-0.46	2 (0%) 86 89	24, 33, 53, 67	0
1	F	254/282 (90%)	-0.53	2 (0%) 86 89	24, 34, 57, 64	0
1	G	255/282 (90%)	-0.35	1 (0%) 92 95	26, 35, 54, 71	0
1	H	254/282 (90%)	-0.37	4 (1%) 72 77	26, 38, 62, 83	0
All	All	2033/2256 (90%)	-0.39	16 (0%) 86 89	22, 36, 59, 87	0

All (16) RSRZ outliers are listed below:

Mol	Chain	Res	Type	RSRZ
1	G	58	PRO	4.0
1	C	58	PRO	3.5
1	D	100[A]	GLU	3.1
1	F	6	ASN	2.9
1	D	103[A]	ARG	2.8
1	H	58	PRO	2.7
1	D	58	PRO	2.5
1	C	6	ASN	2.5
1	D	99[A]	MET	2.3
1	F	58	PRO	2.2
1	E	6	ASN	2.2
1	E	58	PRO	2.2
1	H	100[A]	GLU	2.2
1	D	43	ARG	2.2
1	H	103[A]	ARG	2.0
1	H	43	ARG	2.0

6.2 Non-standard residues in protein, DNA, RNA chains [i](#)

There are no non-standard protein/DNA/RNA residues in this entry.

6.3 Carbohydrates [i](#)

There are no monosaccharides in this entry.

6.4 Ligands [i](#)

In the following table, the Atoms column lists the number of modelled atoms in the group and the number defined in the chemical component dictionary. The B-factors column lists the minimum, median, 95th percentile and maximum values of B factors of atoms in the group. The column labelled 'Q< 0.9' lists the number of atoms with occupancy less than 0.9.

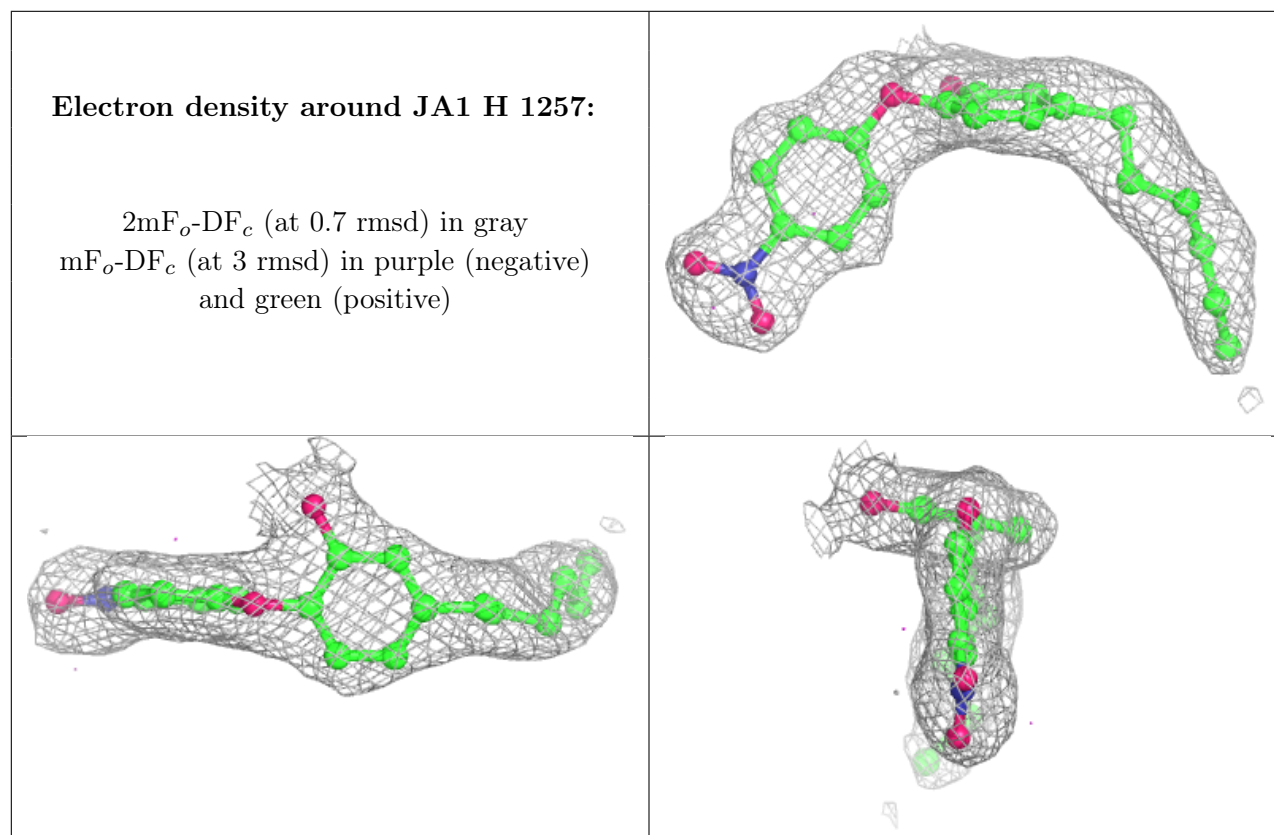
Mol	Type	Chain	Res	Atoms	RSCC	RSR	B-factors(Å ²)	Q<0.9
5	GLU	F	1257	10/10	0.38	0.41	115,116,118,118	0
5	GLU	B	1001	10/10	0.41	0.36	96,99,105,106	0
5	GLU	C	1259	10/10	0.55	0.25	91,95,96,97	0
5	GLU	E	1259	10/10	0.64	0.24	97,98,100,100	0
2	MPD	D	1257	8/8	0.69	0.28	67,71,73,74	0
5	GLU	G	1258	10/10	0.71	0.18	78,79,82,84	0
6	MRD	B	1258	8/8	0.74	0.24	84,90,92,92	0
2	MPD	G	1259	8/8	0.77	0.21	54,65,68,68	0
2	MPD	F	1258	8/8	0.78	0.22	51,58,60,61	0
2	MPD	E	1260	8/8	0.81	0.29	63,69,72,72	0
2	MPD	C	1260	8/8	0.83	0.20	60,68,71,71	0
2	MPD	H	1258	8/8	0.83	0.24	56,64,66,67	0
2	MPD	A	1257	8/8	0.85	0.15	68,74,75,75	0
4	JA1	H	1257	23/23	0.93	0.13	33,42,50,51	0
4	JA1	C	1258	23/23	0.94	0.17	41,51,58,61	0
4	JA1	A	1259	23/23	0.95	0.11	30,35,44,49	0
4	JA1	C	1257	23/23	0.95	0.12	33,39,48,52	0
4	JA1	G	1257	23/23	0.96	0.12	36,40,46,49	0
4	JA1	E	1258	23/23	0.96	0.11	30,37,44,47	0
3	NAP	H	1259	48/48	0.97	0.09	28,38,59,61	0
3	NAP	D	1258	48/48	0.97	0.10	31,42,62,67	0
4	JA1	E	1257	23/23	0.97	0.11	30,32,38,40	0
4	JA1	B	1257	23/23	0.97	0.10	27,37,42,48	0
3	NAP	B	1259	48/48	0.98	0.09	25,34,38,40	0
3	NAP	C	1261	48/48	0.98	0.09	28,37,41,43	0
3	NAP	A	1258	48/48	0.98	0.09	27,31,35,42	0
3	NAP	E	1261	48/48	0.98	0.11	26,32,36,40	0

Continued on next page...

Continued from previous page...

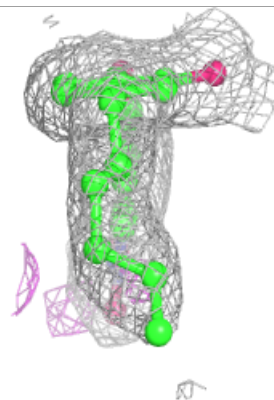
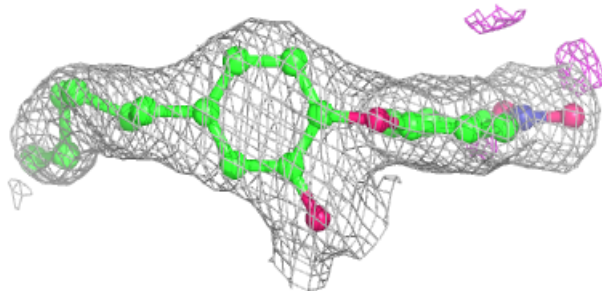
Mol	Type	Chain	Res	Atoms	RSCC	RSR	B-factors(\AA^2)	Q<0.9
3	NAP	G	1260	48/48	0.98	0.10	27,34,38,40	0
3	NAP	F	1259	48/48	0.99	0.09	29,34,38,43	0

The following is a graphical depiction of the model fit to experimental electron density of all instances of the Ligand of Interest. In addition, ligands with molecular weight > 250 and outliers as shown on the geometry validation Tables will also be included. Each fit is shown from different orientation to approximate a three-dimensional view.

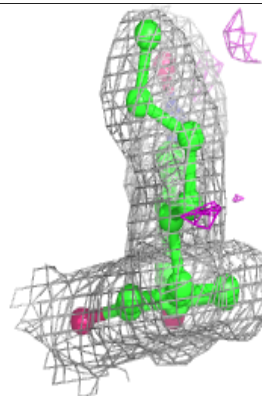
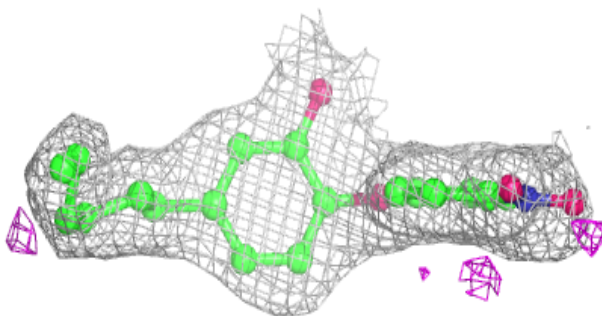
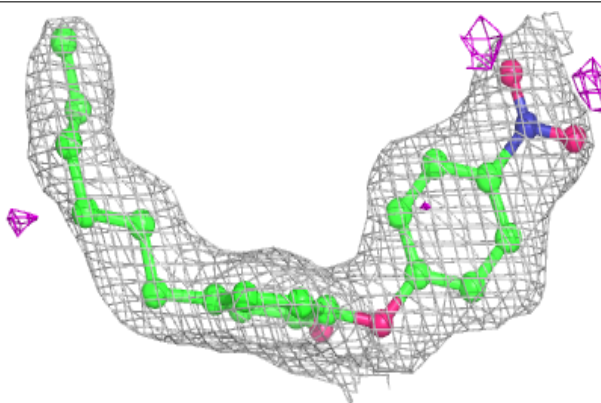


Electron density around JA1 C 1258:

$2mF_o-DF_c$ (at 0.7 rmsd) in gray
 mF_o-DF_c (at 3 rmsd) in purple (negative)
and green (positive)

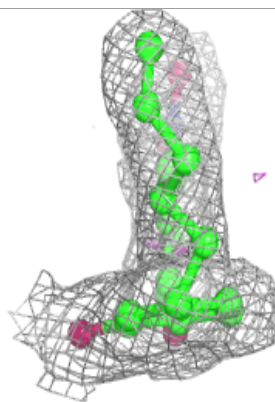
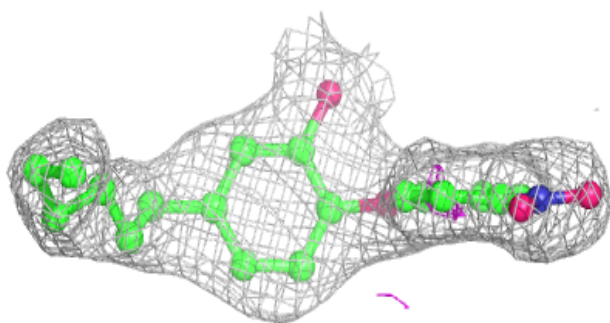
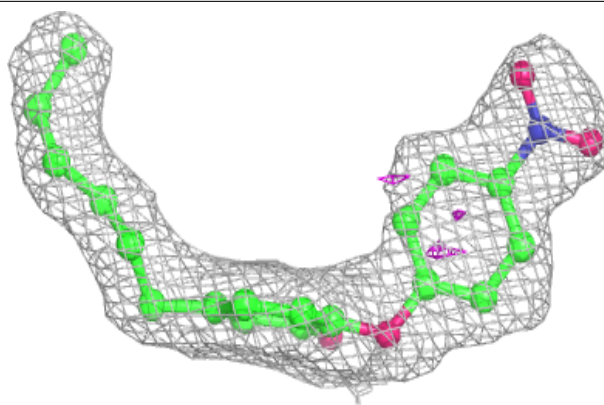
**Electron density around JA1 A 1259:**

$2mF_o-DF_c$ (at 0.7 rmsd) in gray
 mF_o-DF_c (at 3 rmsd) in purple (negative)
and green (positive)

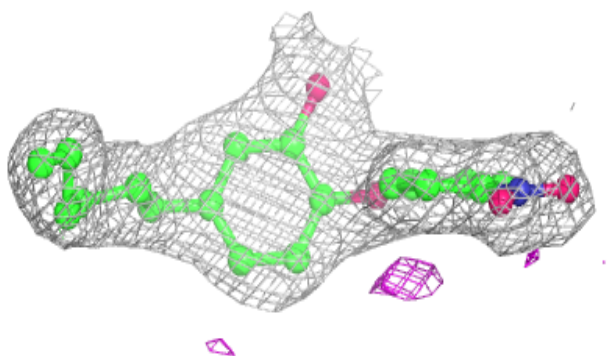
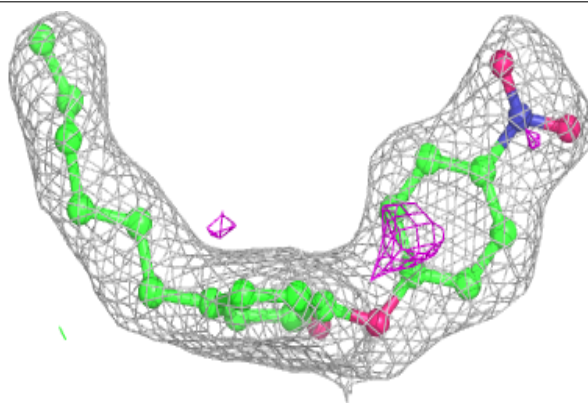


Electron density around JA1 C 1257:

$2mF_o-DF_c$ (at 0.7 rmsd) in gray
 mF_o-DF_c (at 3 rmsd) in purple (negative)
and green (positive)

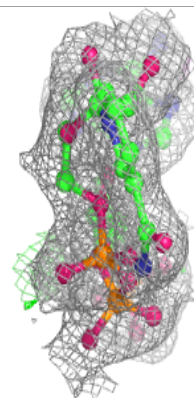
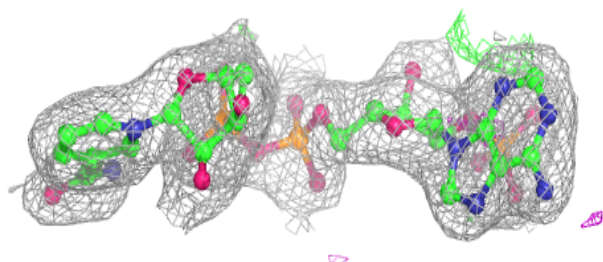
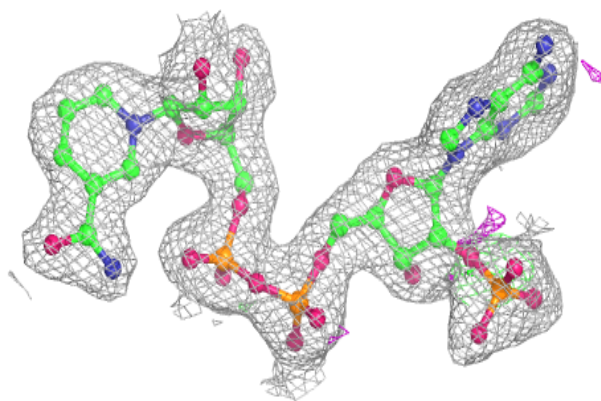
**Electron density around JA1 G 1257:**

$2mF_o-DF_c$ (at 0.7 rmsd) in gray
 mF_o-DF_c (at 3 rmsd) in purple (negative)
and green (positive)

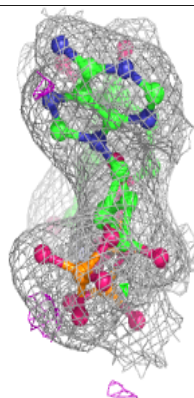
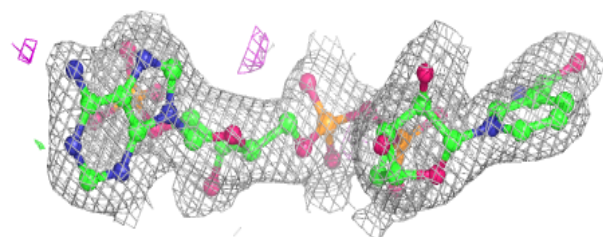
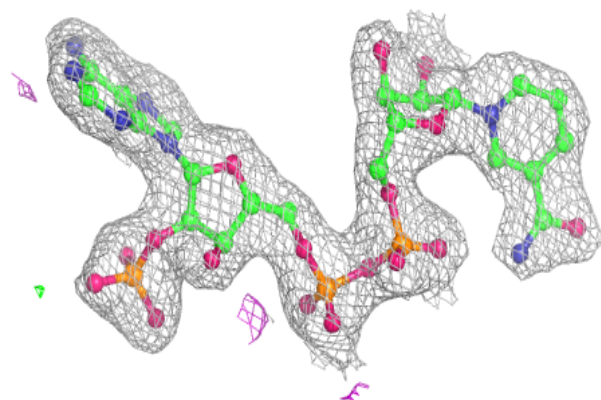


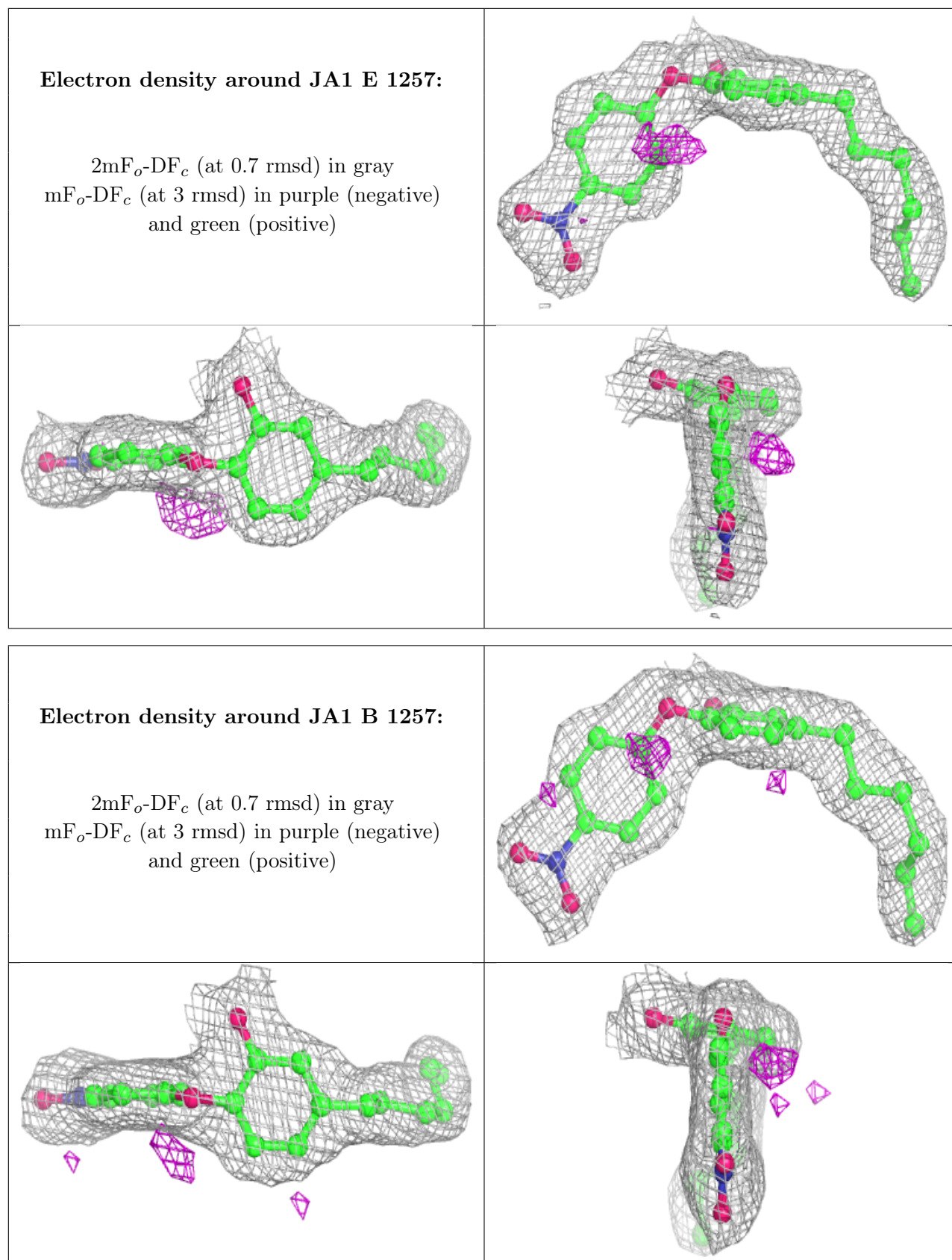
Electron density around NAP H 1259:

$2mF_o-DF_c$ (at 0.7 rmsd) in gray
 mF_o-DF_c (at 3 rmsd) in purple (negative)
and green (positive)

**Electron density around NAP D 1258:**

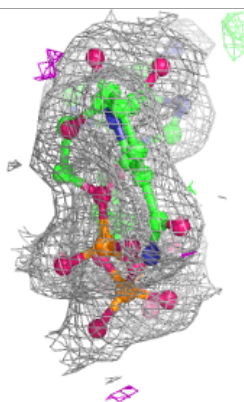
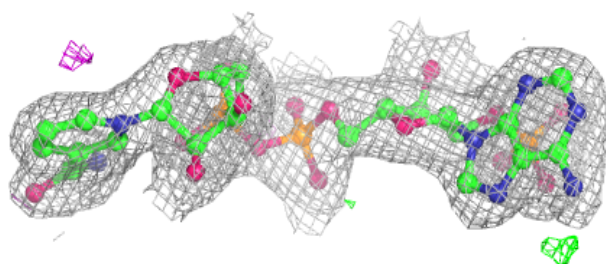
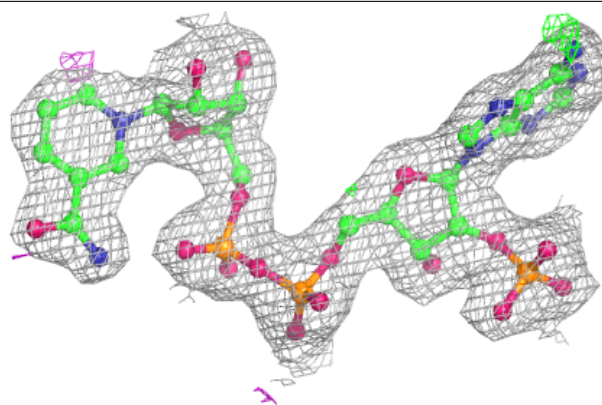
$2mF_o-DF_c$ (at 0.7 rmsd) in gray
 mF_o-DF_c (at 3 rmsd) in purple (negative)
and green (positive)



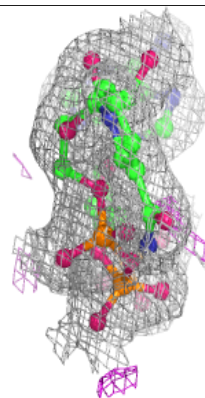
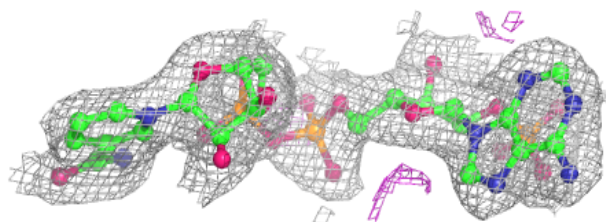
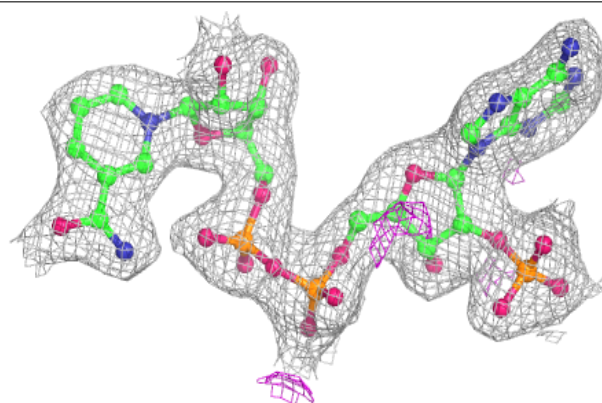


Electron density around NAP B 1259:

$2mF_o-DF_c$ (at 0.7 rmsd) in gray
 mF_o-DF_c (at 3 rmsd) in purple (negative)
and green (positive)

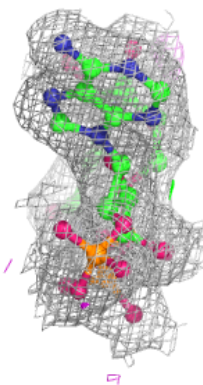
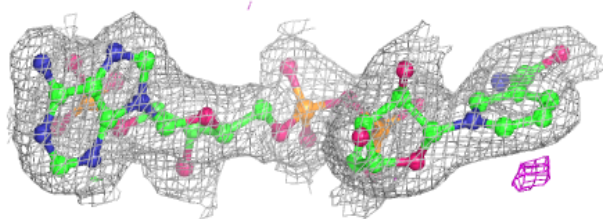
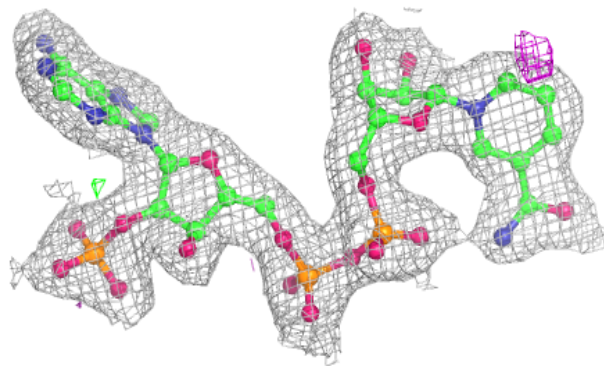
**Electron density around NAP C 1261:**

$2mF_o-DF_c$ (at 0.7 rmsd) in gray
 mF_o-DF_c (at 3 rmsd) in purple (negative)
and green (positive)

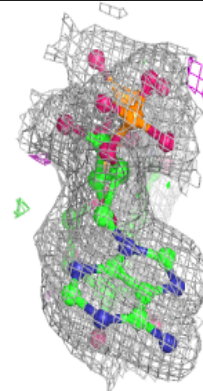
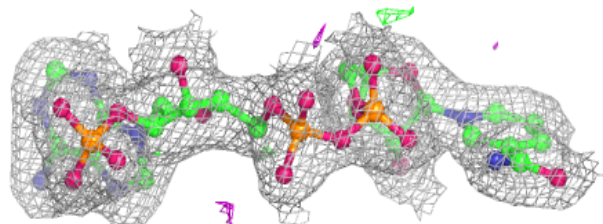
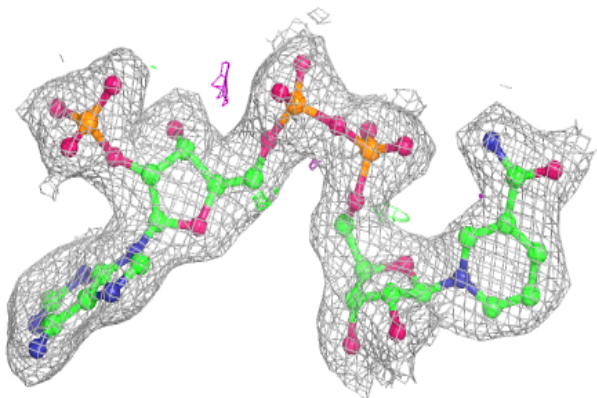


Electron density around NAP A 1258:

$2mF_o-DF_c$ (at 0.7 rmsd) in gray
 mF_o-DF_c (at 3 rmsd) in purple (negative)
and green (positive)

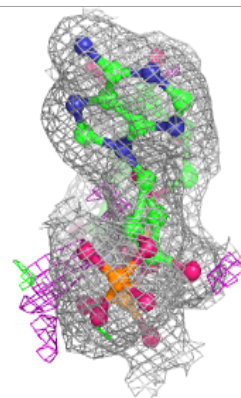
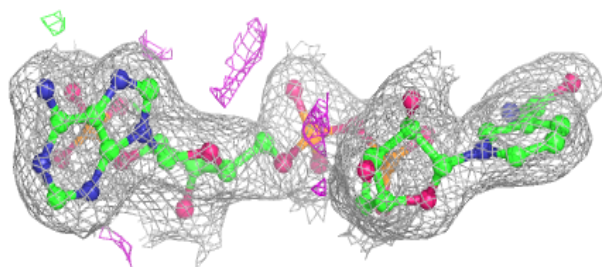
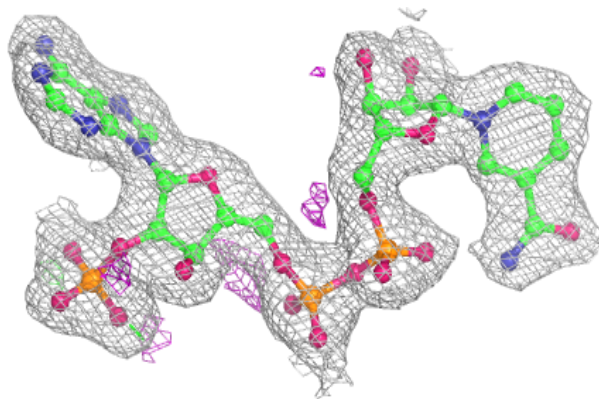
**Electron density around NAP E 1261:**

$2mF_o-DF_c$ (at 0.7 rmsd) in gray
 mF_o-DF_c (at 3 rmsd) in purple (negative)
and green (positive)

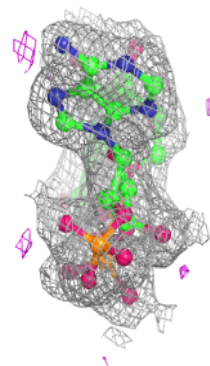
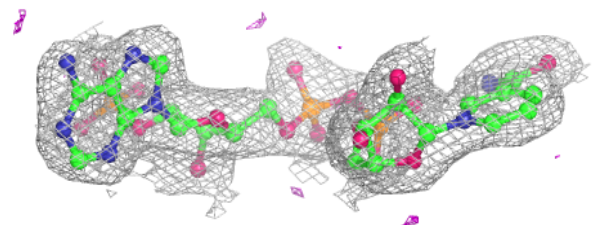
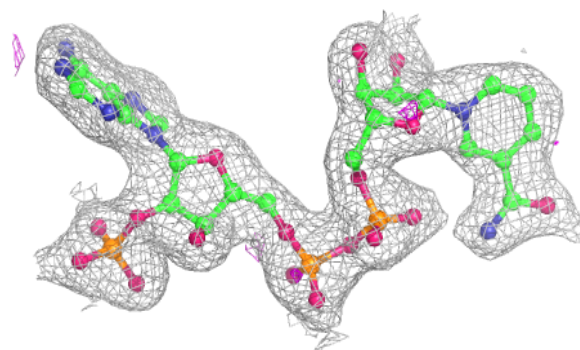


Electron density around NAP G 1260:

$2mF_o-DF_c$ (at 0.7 rmsd) in gray
 mF_o-DF_c (at 3 rmsd) in purple (negative)
and green (positive)

**Electron density around NAP F 1259:**

$2mF_o-DF_c$ (at 0.7 rmsd) in gray
 mF_o-DF_c (at 3 rmsd) in purple (negative)
and green (positive)



6.5 Other polymers [i](#)

There are no such residues in this entry.