



## Full wwPDB EM Validation Report ⓘ

Nov 21, 2022 – 05:19 PM JST

PDB ID : 7D6V  
EMDB ID : EMD-30594  
Title : Mycobacterium smegmatis Sdh1 in complex with UQ1  
Authors : Zhou, X.; Gao, Y.; Wang, Q.; Gong, H.; Rao, Z.  
Deposited on : 2020-10-02  
Resolution : 2.53 Å (reported)

This is a Full wwPDB EM Validation Report for a publicly released PDB entry.

We welcome your comments at [validation@mail.wwpdb.org](mailto:validation@mail.wwpdb.org)

A user guide is available at

<https://www.wwpdb.org/validation/2017/EMValidationReportHelp>

with specific help available everywhere you see the ⓘ symbol.

The types of validation reports are described at

<http://www.wwpdb.org/validation/2017/FAQs#types>.

---

The following versions of software and data (see [references ⓘ](#)) were used in the production of this report:

EMDB validation analysis : 0.0.1.dev43  
Mogul : 1.8.5 (274361), CSD as541be (2020)  
MolProbity : 4.02b-467  
buster-report : 1.1.7 (2018)  
Percentile statistics : 20191225.v01 (using entries in the PDB archive December 25th 2019)  
MapQ : 1.9.9  
Ideal geometry (proteins) : Engh & Huber (2001)  
Ideal geometry (DNA, RNA) : Parkinson et al. (1996)  
Validation Pipeline (wwPDB-VP) : 2.31.3

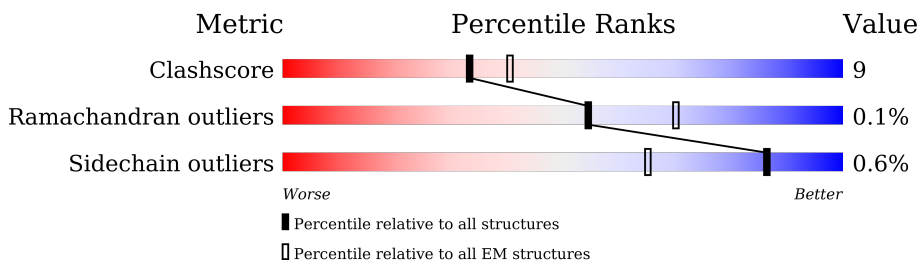
# 1 Overall quality at a glance

The following experimental techniques were used to determine the structure:

*ELECTRON MICROSCOPY*

The reported resolution of this entry is 2.53 Å.

Percentile scores (ranging between 0-100) for global validation metrics of the entry are shown in the following graphic. The table shows the number of entries on which the scores are based.



Metric	Whole archive (#Entries)	EM structures (#Entries)
Clashscore	158937	4297
Ramachandran outliers	154571	4023
Sidechain outliers	154315	3826

The table below summarises the geometric issues observed across the polymeric chains and their fit to the map. The red, orange, yellow and green segments of the bar indicate the fraction of residues that contain outliers for  $\geq 3$ , 2, 1 and 0 types of geometric quality criteria respectively. A grey segment represents the fraction of residues that are not modelled. The numeric value for each fraction is indicated below the corresponding segment, with a dot representing fractions  $\leq 5\%$ . The upper red bar (where present) indicates the fraction of residues that have poor fit to the EM map (all-atom inclusion  $< 40\%$ ). The numeric value is given above the bar.

Mol	Chain	Length	Quality of chain
1	A	635	
2	B	249	
3	C	283	

The following table lists non-polymeric compounds, carbohydrate monomers and non-standard residues in protein, DNA, RNA chains that are outliers for geometric or electron-density-fit criteria:

Mol	Type	Chain	Res	Chirality	Geometry	Clashes	Electron density
7	F3S	B	303	-	-	X	-

## 2 Entry composition i

There are 9 unique types of molecules in this entry. The entry contains 8793 atoms, of which 0 are hydrogens and 0 are deuteriums.

In the tables below, the AltConf column contains the number of residues with at least one atom in alternate conformation and the Trace column contains the number of residues modelled with at most 2 atoms.

- Molecule 1 is a protein called Succinate dehydrogenase subunit A.

Mol	Chain	Residues	Atoms					AltConf	Trace
			Total	C	N	O	S		
1	A	601	4601	2877	831	872	21	0	0

- Molecule 2 is a protein called Fumarate reductase iron-sulfur subunit.

Mol	Chain	Residues	Atoms					AltConf	Trace
			Total	C	N	O	S		
2	B	239	1910	1183	342	364	21	0	0

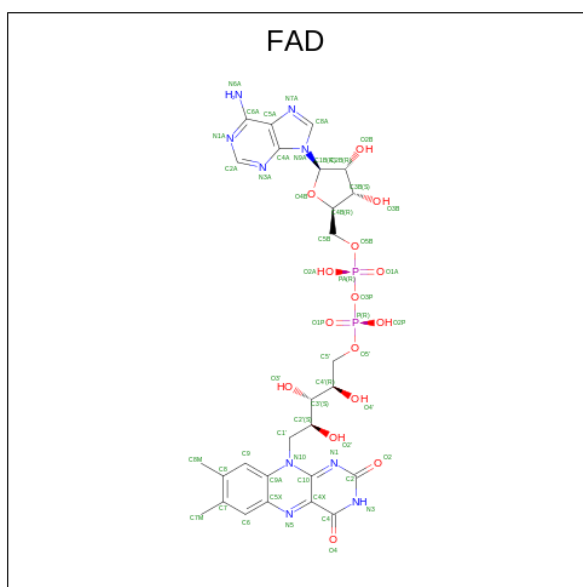
- Molecule 3 is a protein called Succinate dehydrogenase (Membrane anchor subunit).

Mol	Chain	Residues	Atoms					AltConf	Trace
			Total	C	N	O	S		
3	C	264	2139	1421	358	351	9	0	0

There are 10 discrepancies between the modelled and reference sequences:

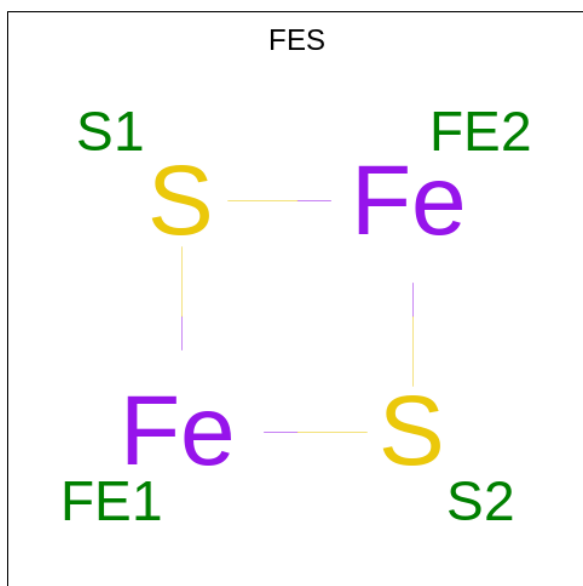
Chain	Residue	Modelled	Actual	Comment	Reference
C	274	HIS	-	expression tag	UNP A0A0D6G6P6
C	275	HIS	-	expression tag	UNP A0A0D6G6P6
C	276	HIS	-	expression tag	UNP A0A0D6G6P6
C	277	HIS	-	expression tag	UNP A0A0D6G6P6
C	278	HIS	-	expression tag	UNP A0A0D6G6P6
C	279	HIS	-	expression tag	UNP A0A0D6G6P6
C	280	HIS	-	expression tag	UNP A0A0D6G6P6
C	281	HIS	-	expression tag	UNP A0A0D6G6P6
C	282	HIS	-	expression tag	UNP A0A0D6G6P6
C	283	HIS	-	expression tag	UNP A0A0D6G6P6

- Molecule 4 is FLAVIN-ADENINE DINUCLEOTIDE (three-letter code: FAD) (formula:  $C_{27}H_{33}N_9O_{15}P_2$ ) (labeled as "Ligand of Interest" by depositor).



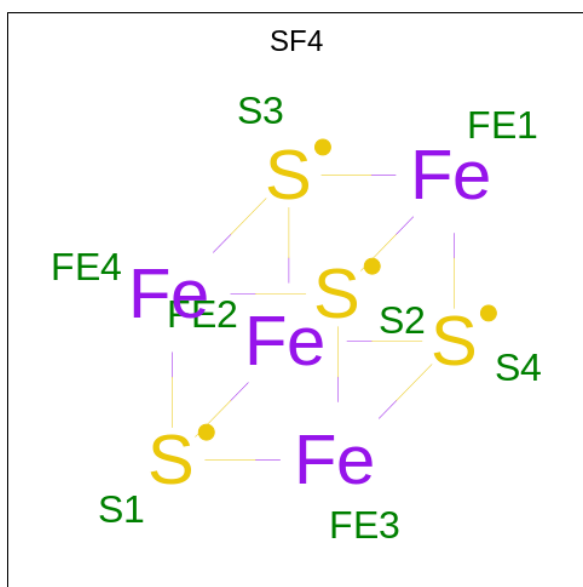
Mol	Chain	Residues	Atoms				AltConf	
4	A	1	Total	C	N	O	P	0
			53	27	9	15	2	

- Molecule 5 is FE2/S2 (INORGANIC) CLUSTER (three-letter code: FES) (formula: Fe<sub>2</sub>S<sub>2</sub>).



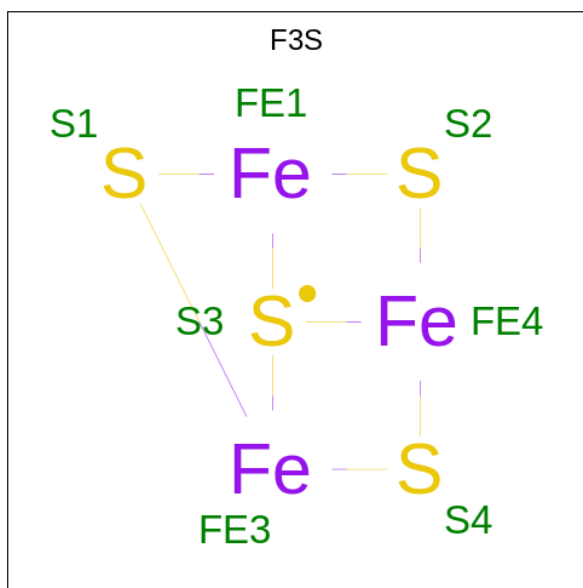
Mol	Chain	Residues	Atoms			AltConf
5	B	1	Total	Fe	S	0
			4	2	2	
5	C	1	Total	Fe	S	0
			4	2	2	

- Molecule 6 is IRON/SULFUR CLUSTER (three-letter code: SF4) (formula: Fe<sub>4</sub>S<sub>4</sub>).



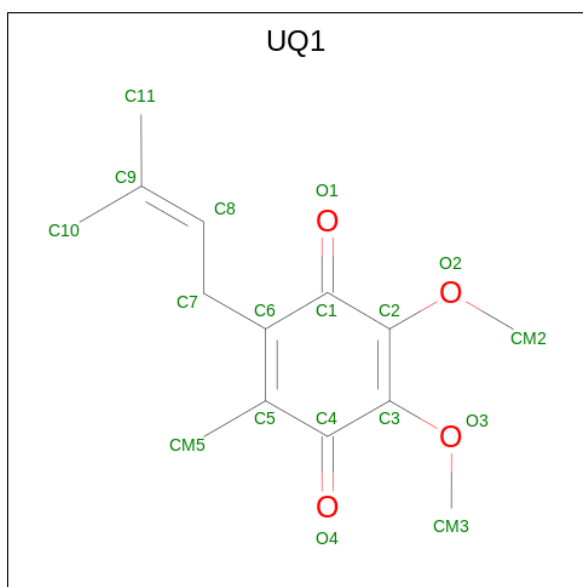
Mol	Chain	Residues	Atoms			AltConf
6	B	1	Total	Fe	S	0
			8	4	4	

- Molecule 7 is FE3-S4 CLUSTER (three-letter code: F3S) (formula:  $\text{Fe}_3\text{S}_4$ ).



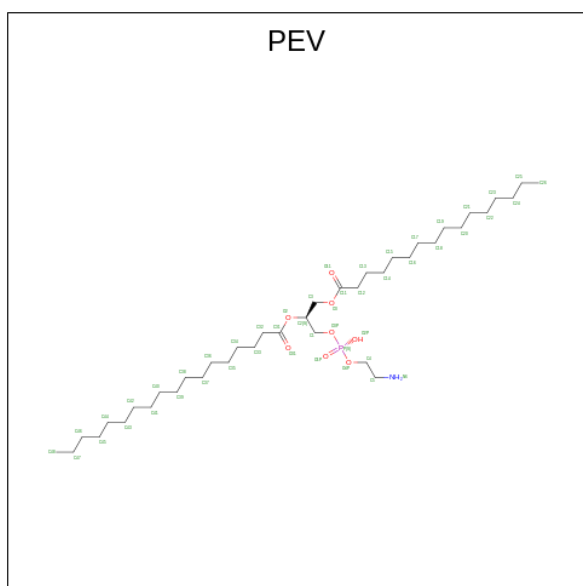
Mol	Chain	Residues	Atoms			AltConf
7	B	1	Total	Fe	S	0
			7	3	4	

- Molecule 8 is UBIQUINONE-1 (three-letter code: UQ1) (formula:  $\text{C}_{14}\text{H}_{18}\text{O}_4$ ).



Mol	Chain	Residues	Atoms			AltConf
			Total	C	O	
8	C	1	18	14	4	0

- Molecule 9 is (1S)-2-[[[(2-AMINOETHOXY)(HYDROXY)PHOSPHORYL]OXY]-1-[(PALMITOYLOXY)METHYL]ETHYL STEARATE (three-letter code: PEV) (formula: C<sub>39</sub>H<sub>78</sub>NO<sub>8</sub>P).

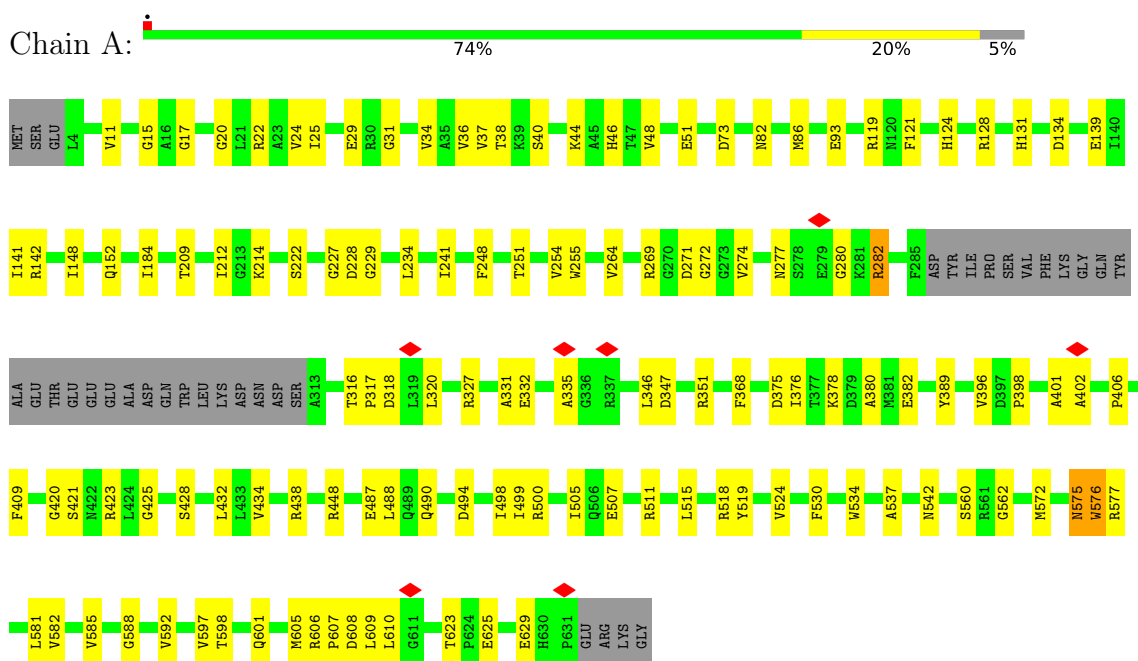


Mol	Chain	Residues	Atoms					AltConf
			Total	C	N	O	P	
9	C	1	49	39	1	8	1	0

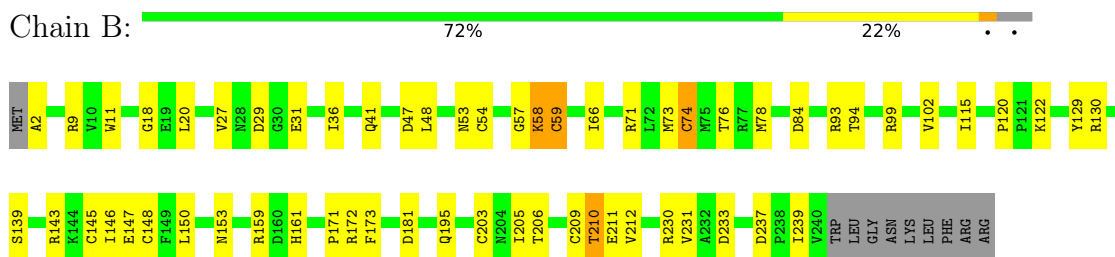
### 3 Residue-property plots

These plots are drawn for all protein, RNA, DNA and oligosaccharide chains in the entry. The first graphic for a chain summarises the proportions of the various outlier classes displayed in the second graphic. The second graphic shows the sequence view annotated by issues in geometry and atom inclusion in map density. Residues are color-coded according to the number of geometric quality criteria for which they contain at least one outlier: green = 0, yellow = 1, orange = 2 and red = 3 or more. A red diamond above a residue indicates a poor fit to the EM map for this residue (all-atom inclusion < 40%). Stretches of 2 or more consecutive residues without any outlier are shown as a green connector. Residues present in the sample, but not in the model, are shown in grey.

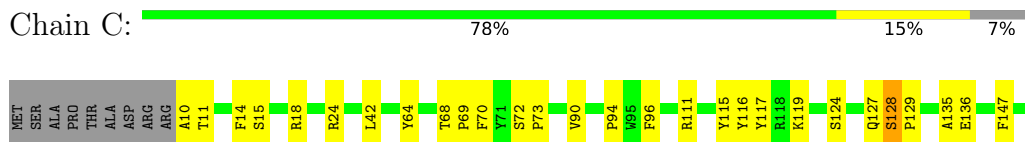
- Molecule 1: Succinate dehydrogenase subunit A



- Molecule 2: Fumarate reductase iron-sulfur subunit



- Molecule 3: Succinate dehydrogenase (Membrane anchor subunit)



R156	Y157	G186	C206	W228	Q232	K235	M241	D255	G264	T265	L269	I272	G273	HIS	HIS	HIS	HIS	HIS	HIS	HIS	HIS	HIS	HIS	HIS	HIS
------	------	------	------	------	------	------	------	------	------	------	------	------	------	-----	-----	-----	-----	-----	-----	-----	-----	-----	-----	-----	-----



## 4 Experimental information

Property	Value	Source
EM reconstruction method	SINGLE PARTICLE	Depositor
Imposed symmetry	POINT, Not provided	
Number of particles used	252092	Depositor
Resolution determination method	FSC 0.143 CUT-OFF	Depositor
CTF correction method	PHASE FLIPPING AND AMPLITUDE CORRECTION	Depositor
Microscope	FEI TITAN KRIOS	Depositor
Voltage (kV)	300	Depositor
Electron dose ( $e^-/\text{\AA}^2$ )	60	Depositor
Minimum defocus (nm)	Not provided	
Maximum defocus (nm)	Not provided	
Magnification	Not provided	
Image detector	GATAN K2 QUANTUM (4k x 4k)	Depositor
Maximum map value	4.923	Depositor
Minimum map value	-2.659	Depositor
Average map value	-0.001	Depositor
Map value standard deviation	0.085	Depositor
Recommended contour level	0.3	Depositor
Map size (Å)	314.88, 314.88, 314.88	wwPDB
Map dimensions	384, 384, 384	wwPDB
Map angles (°)	90.0, 90.0, 90.0	wwPDB
Pixel spacing (Å)	0.82, 0.82, 0.82	Depositor

## 5 Model quality [i](#)

### 5.1 Standard geometry [i](#)

Bond lengths and bond angles in the following residue types are not validated in this section: FES, UQ1, FAD, SF4, F3S, PEV

The Z score for a bond length (or angle) is the number of standard deviations the observed value is removed from the expected value. A bond length (or angle) with  $|Z| > 5$  is considered an outlier worth inspection. RMSZ is the root-mean-square of all Z scores of the bond lengths (or angles).

Mol	Chain	Bond lengths		Bond angles	
		RMSZ	# $ Z  > 5$	RMSZ	# $ Z  > 5$
1	A	0.28	0/4692	0.50	0/6353
2	B	0.52	5/1948 (0.3%)	0.59	3/2636 (0.1%)
3	C	0.30	0/2219	0.47	0/3038
All	All	0.35	5/8859 (0.1%)	0.51	3/12027 (0.0%)

Chiral center outliers are detected by calculating the chiral volume of a chiral center and verifying if the center is modelled as a planar moiety or with the opposite hand. A planarity outlier is detected by checking planarity of atoms in a peptide group, atoms in a mainchain group or atoms of a sidechain that are expected to be planar.

Mol	Chain	#Chirality outliers	#Planarity outliers
1	A	0	1
3	C	0	1
All	All	0	2

All (5) bond length outliers are listed below:

Mol	Chain	Res	Type	Atoms	Z	Observed(Å)	Ideal(Å)
2	B	59	CYS	C-N	13.52	1.57	1.33
2	B	58	LYS	C-N	-5.80	1.20	1.34
2	B	203	CYS	C-N	5.68	1.47	1.34
2	B	210	THR	CA-C	-5.05	1.39	1.52
2	B	210	THR	N-CA	-5.01	1.36	1.46

All (3) bond angle outliers are listed below:

Mol	Chain	Res	Type	Atoms	Z	Observed(°)	Ideal(°)
2	B	59	CYS	N-CA-C	10.36	138.97	111.00
2	B	58	LYS	O-C-N	-6.87	111.72	122.70
2	B	58	LYS	CA-C-N	5.01	128.23	117.20

There are no chirality outliers.

All (2) planarity outliers are listed below:

Mol	Chain	Res	Type	Group
1	A	575	ASN	Peptide
3	C	128	SER	Peptide

## 5.2 Too-close contacts [i](#)

In the following table, the Non-H and H(model) columns list the number of non-hydrogen atoms and hydrogen atoms in the chain respectively. The H(added) column lists the number of hydrogen atoms added and optimized by MolProbity. The Clashes column lists the number of clashes within the asymmetric unit, whereas Symm-Clashes lists symmetry-related clashes.

Mol	Chain	Non-H	H(model)	H(added)	Clashes	Symm-Clashes
1	A	4601	0	4496	87	0
2	B	1910	0	1836	48	0
3	C	2139	0	2101	36	0
4	A	53	0	29	6	0
5	B	4	0	0	0	0
5	C	4	0	0	0	0
6	B	8	0	0	0	0
7	B	7	0	0	4	0
8	C	18	0	18	0	0
9	C	49	0	77	4	0
All	All	8793	0	8557	158	0

The all-atom clashscore is defined as the number of clashes found per 1000 atoms (including hydrogen atoms). The all-atom clashscore for this structure is 9.

All (158) close contacts within the same asymmetric unit are listed below, sorted by their clash magnitude.

Atom-1	Atom-2	Interatomic distance (Å)	Clash overlap (Å)
1:A:46:HIS:NE2	4:A:701:FAD:C8M	1.71	1.51
1:A:46:HIS:CE1	4:A:701:FAD:C8M	2.38	1.07
3:C:69:PRO:HA	3:C:72:SER:OG	1.63	0.99
1:A:396:VAL:HG12	1:A:402:ALA:HB2	1.50	0.94
2:B:206:THR:HA	3:C:119:LYS:HG3	1.62	0.82
1:A:241:ILE:HG22	1:A:582:VAL:HG22	1.67	0.77
1:A:73:ASP:OD2	1:A:128:ARG:NH2	2.21	0.73
1:A:272:GLY:HA3	1:A:351:ARG:HG3	1.71	0.73
1:A:605:MET:HB3	1:A:608:ASP:HB2	1.72	0.71

*Continued on next page...*

*Continued from previous page...*

Atom-1	Atom-2	Interatomic distance (Å)	Clash overlap (Å)
2:B:161:HIS:NE2	3:C:136:GLU:OE1	2.24	0.70
1:A:575:ASN:OD1	1:A:576:TRP:N	2.19	0.70
1:A:184:ILE:HG12	1:A:406:PRO:HB2	1.72	0.70
1:A:234:LEU:HG	1:A:585:VAL:HG23	1.75	0.69
1:A:500:ARG:HB3	1:A:505:ILE:HD11	1.74	0.68
1:A:581:LEU:HA	1:A:597:VAL:O	1.93	0.68
3:C:69:PRO:HA	3:C:72:SER:HG	1.56	0.67
1:A:575:ASN:O	1:A:577:ARG:N	2.27	0.67
3:C:228:TRP:O	3:C:232:GLN:NE2	2.27	0.67
2:B:47:ASP:O	2:B:99:ARG:NH1	2.28	0.67
3:C:68:THR:HG22	3:C:70:PHE:H	1.60	0.67
1:A:228:ASP:OD1	1:A:542:ASN:ND2	2.28	0.66
2:B:195:GLN:HE21	2:B:231:VAL:HG11	1.61	0.65
2:B:120:PRO:O	2:B:122:LYS:NZ	2.30	0.65
1:A:48:VAL:HG12	1:A:141:ILE:HG21	1.78	0.65
1:A:577:ARG:O	1:A:601:GLN:NE2	2.31	0.64
1:A:401:ALA:HB3	1:A:409:PHE:HD1	1.63	0.64
2:B:54:CYS:SG	2:B:57:GLY:O	2.56	0.63
1:A:255:TRP:HB3	1:A:382:GLU:HG2	1.80	0.63
1:A:251:THR:HG22	1:A:264:VAL:HB	1.81	0.63
2:B:205:ILE:HD13	3:C:115:TYR:HD1	1.63	0.63
1:A:488:LEU:HB2	1:A:515:LEU:HD21	1.81	0.62
1:A:609:LEU:HB3	1:A:629:GLU:HG2	1.81	0.62
1:A:327:ARG:HG2	1:A:499:ILE:HG12	1.82	0.62
2:B:115:ILE:HD11	2:B:173:PHE:HB3	1.82	0.61
2:B:209:CYS:SG	2:B:210:THR:N	2.73	0.60
1:A:212:ILE:HG22	1:A:227:GLY:HA2	1.82	0.60
3:C:124:SER:O	3:C:127:GLN:NE2	2.34	0.60
1:A:46:HIS:NE2	4:A:701:FAD:C8	2.60	0.59
3:C:72:SER:HB2	3:C:73:PRO:HD3	1.84	0.59
1:A:31:GLY:O	1:A:448:ARG:NH1	2.36	0.59
2:B:233:ASP:OD1	3:C:156:ARG:NH1	2.30	0.59
3:C:232:GLN:OE1	3:C:235:LYS:NZ	2.37	0.58
1:A:507:GLU:OE2	1:A:511:ARG:NH2	2.37	0.57
1:A:606:ARG:HD2	1:A:607:PRO:HD2	1.86	0.57
2:B:2:ALA:N	2:B:29:ASP:OD2	2.37	0.57
3:C:186:GLY:HA3	3:C:269:LEU:HD23	1.85	0.57
3:C:116:TYR:CE1	3:C:241:MET:HG3	2.40	0.57
2:B:206:THR:HG21	3:C:129:PRO:HD2	1.87	0.56
1:A:396:VAL:HA	1:A:402:ALA:HA	1.87	0.56
2:B:66:ILE:HG21	2:B:76:THR:HG21	1.88	0.55

*Continued on next page...*

*Continued from previous page...*

Atom-1	Atom-2	Interatomic distance (Å)	Clash overlap (Å)
2:B:237:ASP:OD2	3:C:157:TYR:OH	2.20	0.55
1:A:316:THR:O	1:A:318:ASP:N	2.38	0.55
2:B:209:CYS:N	7:B:303:F3S:S1	2.80	0.55
3:C:24:ARG:HD3	3:C:135:ALA:HB3	1.88	0.55
1:A:51:GLU:HB3	1:A:134:ASP:HB3	1.89	0.55
2:B:66:ILE:HD11	2:B:73:MET:HG2	1.89	0.54
2:B:209:CYS:C	2:B:211:GLU:N	2.57	0.54
1:A:254:VAL:HG22	1:A:382:GLU:O	2.08	0.54
1:A:46:HIS:HB3	4:A:701:FAD:O2A	2.08	0.53
3:C:24:ARG:CD	3:C:135:ALA:HB3	2.39	0.53
1:A:389:TYR:CD1	1:A:423:ARG:HD2	2.45	0.52
2:B:66:ILE:HG12	2:B:71:ARG:HB2	1.92	0.52
3:C:64:TYR:CE1	3:C:269:LEU:HD11	2.45	0.52
1:A:375:ASP:HB3	1:A:378:LYS:HB2	1.92	0.52
1:A:269:ARG:C	1:A:271:ASP:H	2.13	0.52
1:A:24:VAL:HG21	1:A:36:VAL:HG22	1.91	0.52
1:A:44:LYS:O	2:B:53:ASN:ND2	2.42	0.52
2:B:11:TRP:CZ2	2:B:18:GLY:HA3	2.45	0.52
1:A:401:ALA:HB3	1:A:409:PHE:CD1	2.44	0.51
1:A:597:VAL:HG12	1:A:598:THR:H	1.76	0.51
2:B:146:ILE:HG13	2:B:146:ILE:O	2.11	0.50
1:A:282:ARG:HG3	1:A:332:GLU:HG3	1.92	0.50
2:B:205:ILE:HA	7:B:303:F3S:S4	2.51	0.50
1:A:317:PRO:HB3	1:A:320:LEU:HD11	1.92	0.50
1:A:487:GLU:OE1	1:A:518:ARG:NH1	2.41	0.50
3:C:128:SER:O	3:C:136:GLU:HG2	2.11	0.50
2:B:209:CYS:O	2:B:212:VAL:HG22	2.12	0.50
2:B:205:ILE:HD11	3:C:115:TYR:O	2.12	0.49
2:B:209:CYS:O	2:B:211:GLU:N	2.46	0.49
1:A:274:VAL:HG12	1:A:346:LEU:HB2	1.94	0.49
1:A:214:LYS:HA	1:A:214:LYS:HD2	1.61	0.48
2:B:27:VAL:HG22	2:B:36:ILE:HD12	1.95	0.48
1:A:255:TRP:CB	1:A:382:GLU:HG2	2.43	0.48
1:A:274:VAL:HA	1:A:346:LEU:HA	1.94	0.48
1:A:368:PHE:CD2	1:A:376:ILE:HD11	2.49	0.48
1:A:17:GLY:HA3	4:A:701:FAD:O1A	2.14	0.48
2:B:148:CYS:SG	2:B:150:LEU:HG	2.54	0.48
1:A:46:HIS:ND1	1:A:222:SER:OG	2.32	0.48
2:B:209:CYS:HB3	7:B:303:F3S:S1	2.52	0.48
1:A:347:ASP:HB3	1:A:380:ALA:HB2	1.96	0.47
1:A:434:VAL:O	1:A:438:ARG:HG2	2.14	0.47

*Continued on next page...*

*Continued from previous page...*

Atom-1	Atom-2	Interatomic distance (Å)	Clash overlap (Å)
1:A:530:PHE:CE2	2:B:102:VAL:HG21	2.50	0.47
2:B:31:GLU:O	2:B:78:MET:HB3	2.15	0.47
3:C:147:PHE:O	3:C:150:ILE:HG22	2.14	0.47
3:C:10:ALA:HB3	3:C:14:PHE:HB2	1.95	0.47
2:B:94:THR:OG1	2:B:153:ASN:O	2.30	0.47
3:C:94:PRO:O	3:C:96:PHE:N	2.46	0.47
1:A:82:ASN:ND2	1:A:420:GLY:H	2.13	0.47
9:C:302:PEV:H172	9:C:302:PEV:H201	1.52	0.47
1:A:121:PHE:HB3	1:A:124:HIS:HD2	1.80	0.46
1:A:331:ALA:O	1:A:335:ALA:N	2.39	0.46
1:A:490:GLN:NE2	1:A:494:ASP:OD1	2.49	0.46
2:B:146:ILE:O	2:B:148:CYS:N	2.49	0.46
2:B:129:TYR:O	2:B:130:ARG:NH1	2.48	0.46
1:A:93:GLU:OE2	1:A:438:ARG:NH1	2.49	0.45
3:C:70:PHE:HD1	3:C:255:ASP:OD1	1.98	0.45
1:A:20:GLY:O	1:A:24:VAL:HG23	2.16	0.45
1:A:38:THR:HG22	1:A:40:SER:H	1.81	0.45
1:A:142:ARG:HH21	2:B:147:GLU:H	1.64	0.45
1:A:423:ARG:NH2	1:A:428:SER:OG	2.45	0.45
3:C:90:VAL:HG13	3:C:90:VAL:O	2.16	0.45
9:C:302:PEV:H152	9:C:302:PEV:H181	1.46	0.45
1:A:588:GLY:O	1:A:592:VAL:HA	2.17	0.45
2:B:9:ARG:HG2	2:B:20:LEU:HB3	1.99	0.45
1:A:48:VAL:HG21	2:B:59:CYS:HB3	1.99	0.45
2:B:171:PRO:HB3	7:B:303:F3S:S3	2.57	0.44
1:A:15:GLY:N	1:A:37:VAL:O	2.50	0.44
1:A:401:ALA:HB3	1:A:409:PHE:HB3	2.00	0.44
2:B:159:ARG:O	3:C:18:ARG:NH1	2.50	0.44
1:A:86:MET:HG3	1:A:398:PRO:HB3	2.00	0.44
3:C:151:LEU:O	3:C:154:ILE:HG12	2.18	0.43
1:A:209:THR:OG1	1:A:229:GLY:HA3	2.18	0.43
1:A:428:SER:O	1:A:432:LEU:HG	2.19	0.43
1:A:519:TYR:OH	1:A:537:ALA:O	2.32	0.43
1:A:560:SER:O	1:A:572:MET:HA	2.19	0.43
3:C:68:THR:HG21	3:C:255:ASP:OD1	2.18	0.43
1:A:119:ARG:HG3	1:A:131:HIS:CD2	2.54	0.42
1:A:25:ILE:O	1:A:29:GLU:HG2	2.19	0.42
2:B:84:ASP:OD1	2:B:84:ASP:N	2.48	0.42
1:A:51:GLU:OE2	2:B:58:LYS:NZ	2.35	0.42
1:A:148:ILE:O	1:A:152:GLN:HG2	2.19	0.42
1:A:623:THR:O	1:A:625:GLU:N	2.43	0.42

*Continued on next page...*

Continued from previous page...

Atom-1	Atom-2	Interatomic distance (Å)	Clash overlap (Å)
2:B:181:ASP:OD2	2:B:230:ARG:NH1	2.51	0.42
1:A:277:ASN:HB2	1:A:280:GLY:O	2.19	0.42
1:A:139:GLU:OE1	2:B:143:ARG:NH2	2.32	0.42
1:A:389:TYR:HE2	4:A:701:FAD:O3'	2.02	0.42
1:A:610:LEU:H	1:A:610:LEU:HG	1.63	0.42
1:A:421:SER:HB3	1:A:562:GLY:HA3	2.01	0.42
1:A:607:PRO:C	1:A:609:LEU:H	2.22	0.42
3:C:116:TYR:CZ	3:C:241:MET:HG3	2.54	0.42
2:B:57:GLY:N	2:B:74:CYS:SG	2.86	0.41
3:C:11:THR:O	3:C:15:SER:OG	2.38	0.41
2:B:239:ILE:HG12	3:C:157:TYR:OH	2.20	0.41
3:C:264:GLY:O	3:C:265:THR:OG1	2.33	0.41
2:B:41:GLN:NE2	2:B:48:LEU:O	2.49	0.41
2:B:94:THR:HG23	2:B:159:ARG:HA	2.02	0.41
3:C:272:ILE:H	3:C:272:ILE:HD12	1.85	0.41
2:B:139:SER:O	2:B:143:ARG:HG2	2.21	0.41
1:A:11:VAL:HG13	1:A:34:VAL:HG13	2.03	0.41
1:A:22:ARG:HD2	1:A:22:ARG:HA	1.80	0.41
1:A:248:PHE:HB2	1:A:498:ILE:HG12	2.02	0.41
1:A:368:PHE:HD2	1:A:376:ILE:HD11	1.85	0.41
3:C:111:ARG:NH1	3:C:117:TYR:OH	2.54	0.41
1:A:121:PHE:CE2	1:A:425:GLY:HA3	2.55	0.41
2:B:93:ARG:O	3:C:18:ARG:HD3	2.21	0.41
3:C:42:LEU:HD13	9:C:302:PEV:H431	2.02	0.41
1:A:524:VAL:HG11	1:A:534:TRP:HB2	2.03	0.40
9:C:302:PEV:H321	9:C:302:PEV:H122	2.03	0.40

There are no symmetry-related clashes.

## 5.3 Torsion angles [i](#)

### 5.3.1 Protein backbone [i](#)

In the following table, the Percentiles column shows the percent Ramachandran outliers of the chain as a percentile score with respect to all PDB entries followed by that with respect to all EM entries.

The Analysed column shows the number of residues for which the backbone conformation was analysed, and the total number of residues.

Mol	Chain	Analysed	Favoured	Allowed	Outliers	Percentiles	
1	A	597/635 (94%)	535 (90%)	61 (10%)	1 (0%)	47	67
2	B	237/249 (95%)	213 (90%)	24 (10%)	0	100	100
3	C	262/283 (93%)	242 (92%)	20 (8%)	0	100	100
All	All	1096/1167 (94%)	990 (90%)	105 (10%)	1 (0%)	54	71

All (1) Ramachandran outliers are listed below:

Mol	Chain	Res	Type
1	A	576	TRP

### 5.3.2 Protein sidechains [i](#)

In the following table, the Percentiles column shows the percent sidechain outliers of the chain as a percentile score with respect to all PDB entries followed by that with respect to all EM entries.

The Analysed column shows the number of residues for which the sidechain conformation was analysed, and the total number of residues.

Mol	Chain	Analysed	Rotameric	Outliers	Percentiles	
1	A	471/511 (92%)	470 (100%)	1 (0%)	93	98
2	B	213/224 (95%)	210 (99%)	3 (1%)	67	85
3	C	222/240 (92%)	221 (100%)	1 (0%)	88	95
All	All	906/975 (93%)	901 (99%)	5 (1%)	86	94

All (5) residues with a non-rotameric sidechain are listed below:

Mol	Chain	Res	Type
1	A	282	ARG
2	B	74	CYS
2	B	145	CYS
2	B	172	ARG
3	C	206	CYS

Sometimes sidechains can be flipped to improve hydrogen bonding and reduce clashes. There are no such sidechains identified.

### 5.3.3 RNA [i](#)

There are no RNA molecules in this entry.



## 5.4 Non-standard residues in protein, DNA, RNA chains [i](#)

There are no non-standard protein/DNA/RNA residues in this entry.

## 5.5 Carbohydrates [i](#)

There are no monosaccharides in this entry.

## 5.6 Ligand geometry [i](#)

7 ligands are modelled in this entry.

In the following table, the Counts columns list the number of bonds (or angles) for which Mogul statistics could be retrieved, the number of bonds (or angles) that are observed in the model and the number of bonds (or angles) that are defined in the Chemical Component Dictionary. The Link column lists molecule types, if any, to which the group is linked. The Z score for a bond length (or angle) is the number of standard deviations the observed value is removed from the expected value. A bond length (or angle) with  $|Z| > 2$  is considered an outlier worth inspection. RMSZ is the root-mean-square of all Z scores of the bond lengths (or angles).

Mol	Type	Chain	Res	Link	Bond lengths			Bond angles		
					Counts	RMSZ	# Z  > 2	Counts	RMSZ	# Z  > 2
4	FAD	A	701	-	53,58,58	1.26	6 (11%)	68,89,89	1.30	13 (19%)
7	F3S	B	303	2	0,9,9	-	-	-	-	-
6	SF4	B	302	2	0,12,12	-	-	-	-	-
5	FES	B	301	2	0,4,4	-	-	-	-	-
8	UQ1	C	301	-	18,18,18	2.89	7 (38%)	22,25,25	1.21	2 (9%)
9	PEV	C	302	-	48,48,48	0.87	3 (6%)	51,53,53	0.92	3 (5%)
5	FES	C	303	3	0,4,4	-	-	-	-	-

In the following table, the Chirals column lists the number of chiral outliers, the number of chiral centers analysed, the number of these observed in the model and the number defined in the Chemical Component Dictionary. Similar counts are reported in the Torsion and Rings columns. '-' means no outliers of that kind were identified.

Mol	Type	Chain	Res	Link	Chirals	Torsions	Rings
4	FAD	A	701	-	-	6/30/50/50	0/6/6/6
7	F3S	B	303	2	-	-	0/3/3/3
6	SF4	B	302	2	-	-	0/6/5/5
5	FES	B	301	2	-	-	0/1/1/1
8	UQ1	C	301	-	-	2/9/33/33	0/1/1/1
9	PEV	C	302	-	-	34/52/52/52	-
5	FES	C	303	3	-	-	0/1/1/1

All (16) bond length outliers are listed below:

Mol	Chain	Res	Type	Atoms	Z	Observed(Å)	Ideal(Å)
8	C	301	UQ1	C6-C5	9.66	1.52	1.35
4	A	701	FAD	C9A-C5X	4.52	1.48	1.41
8	C	301	UQ1	C3-C2	4.11	1.53	1.36
4	A	701	FAD	C4-N3	-3.09	1.33	1.38
4	A	701	FAD	C8-C7	2.91	1.48	1.40
9	C	302	PEV	O2-C2	-2.71	1.39	1.46
4	A	701	FAD	C5X-N5	-2.50	1.34	1.39
9	C	302	PEV	O3-C11	2.39	1.40	1.33
4	A	701	FAD	C2-N3	-2.25	1.33	1.39
8	C	301	UQ1	C6-C1	2.20	1.52	1.46
4	A	701	FAD	C2B-C1B	-2.19	1.50	1.53
8	C	301	UQ1	O1-C1	-2.19	1.18	1.23
8	C	301	UQ1	O3-CM3	-2.15	1.40	1.45
8	C	301	UQ1	O4-C4	-2.13	1.18	1.23
8	C	301	UQ1	O2-CM2	-2.12	1.40	1.45
9	C	302	PEV	O3-C3	-2.10	1.40	1.45

All (18) bond angle outliers are listed below:

Mol	Chain	Res	Type	Atoms	Z	Observed(°)	Ideal(°)
9	C	302	PEV	O2-C31-C32	3.87	119.84	111.50
4	A	701	FAD	N3A-C2A-N1A	-3.61	123.03	128.68
8	C	301	UQ1	CM5-C5-C6	-2.76	119.89	124.40
4	A	701	FAD	C4X-C10-N1	-2.70	118.47	124.73
4	A	701	FAD	C4A-C5A-N7A	-2.69	106.60	109.40
9	C	302	PEV	O3-C11-C12	2.59	120.04	111.91
8	C	301	UQ1	C11-C9-C10	2.56	120.26	114.60
4	A	701	FAD	C4-C4X-N5	2.47	121.75	118.23
4	A	701	FAD	O4B-C1B-C2B	-2.34	103.51	106.93
4	A	701	FAD	O4-C4-C4X	-2.27	120.57	126.60
4	A	701	FAD	C4X-C4-N3	2.18	118.73	113.19
4	A	701	FAD	C4X-C10-N10	2.13	119.59	116.48
9	C	302	PEV	C2-O2-C31	-2.07	112.70	117.79
4	A	701	FAD	C10-N1-C2	2.07	121.03	116.90
4	A	701	FAD	C4-N3-C2	-2.05	121.86	125.64
4	A	701	FAD	C2A-N1A-C6A	2.05	122.26	118.75
4	A	701	FAD	N3-C2-N1	2.01	123.34	119.38
4	A	701	FAD	O2-C2-N1	-2.01	118.50	121.83

There are no chirality outliers.

All (42) torsion outliers are listed below:

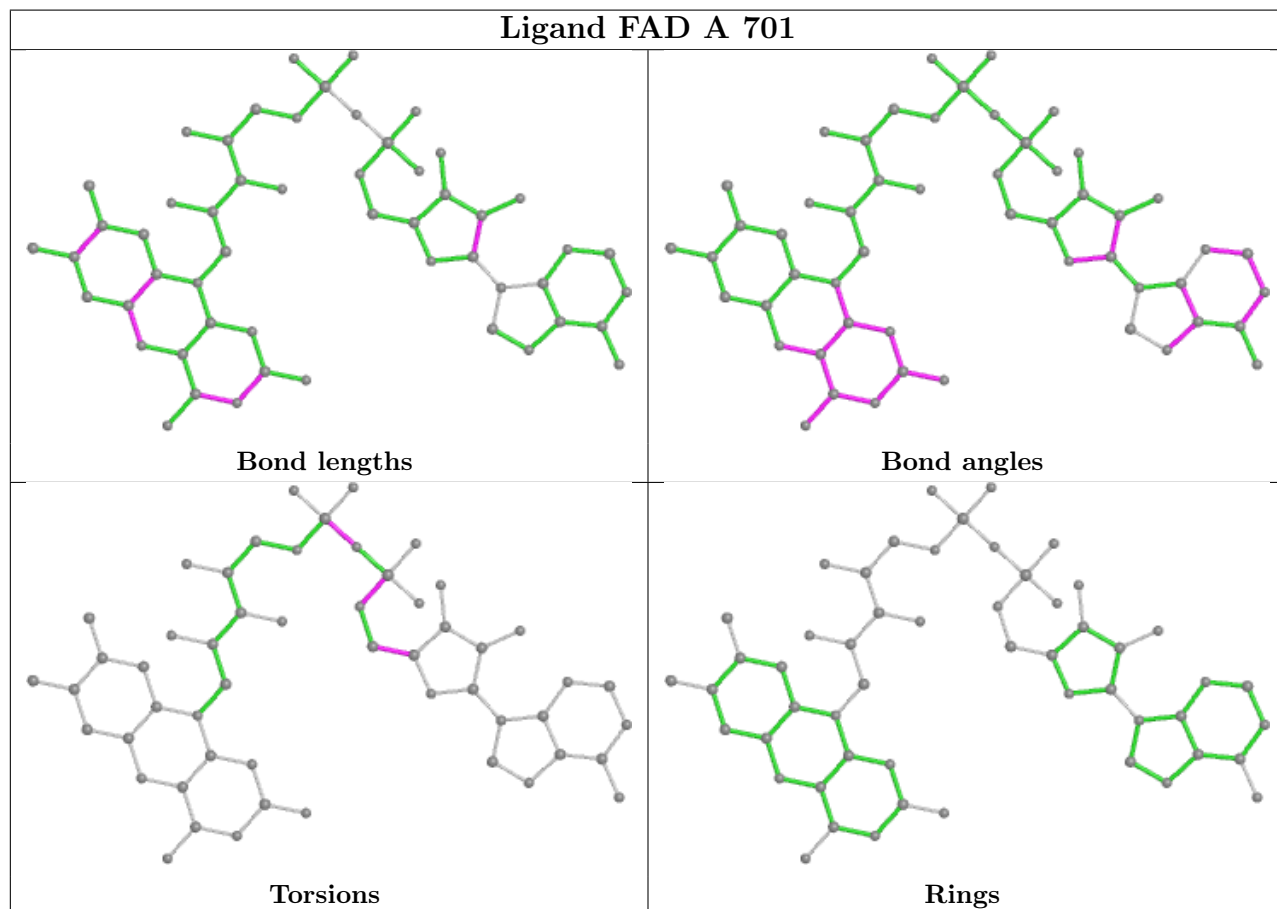
Mol	Chain	Res	Type	Atoms
4	A	701	FAD	C5B-O5B-PA-O3P
4	A	701	FAD	O4B-C4B-C5B-O5B
9	C	302	PEV	C32-C31-O2-C2
9	C	302	PEV	C1-O3P-P-O1P
9	C	302	PEV	C4-O4P-P-O1P
9	C	302	PEV	O31-C31-O2-C2
9	C	302	PEV	C15-C16-C17-C18
9	C	302	PEV	C17-C18-C19-C20
9	C	302	PEV	C12-C11-O3-C3
9	C	302	PEV	O11-C11-O3-C3
9	C	302	PEV	C13-C14-C15-C16
9	C	302	PEV	C16-C17-C18-C19
9	C	302	PEV	O4P-C4-C5-N6
9	C	302	PEV	C41-C42-C43-C44
9	C	302	PEV	C36-C37-C38-C39
9	C	302	PEV	C35-C36-C37-C38
9	C	302	PEV	C20-C21-C22-C23
9	C	302	PEV	C39-C40-C41-C42
9	C	302	PEV	C4-O4P-P-O3P
9	C	302	PEV	C31-C32-C33-C34
9	C	302	PEV	C23-C24-C25-C26
9	C	302	PEV	C14-C15-C16-C17
9	C	302	PEV	O3P-C1-C2-C3
9	C	302	PEV	C42-C43-C44-C45
9	C	302	PEV	C21-C22-C23-C24
9	C	302	PEV	C1-O3P-P-O4P
9	C	302	PEV	C37-C38-C39-C40
4	A	701	FAD	PA-O3P-P-O5'
9	C	302	PEV	O3P-C1-C2-O2
9	C	302	PEV	C44-C45-C46-C47
4	A	701	FAD	C5B-O5B-PA-O1A
4	A	701	FAD	C5B-O5B-PA-O2A
9	C	302	PEV	C4-O4P-P-O2P
8	C	301	UQ1	C1-C2-O2-CM2
9	C	302	PEV	C12-C13-C14-C15
9	C	302	PEV	C33-C34-C35-C36
4	A	701	FAD	C3B-C4B-C5B-O5B
9	C	302	PEV	C34-C35-C36-C37
9	C	302	PEV	C32-C33-C34-C35
9	C	302	PEV	C22-C23-C24-C25
8	C	301	UQ1	C3-C2-O2-CM2
9	C	302	PEV	O2-C31-C32-C33

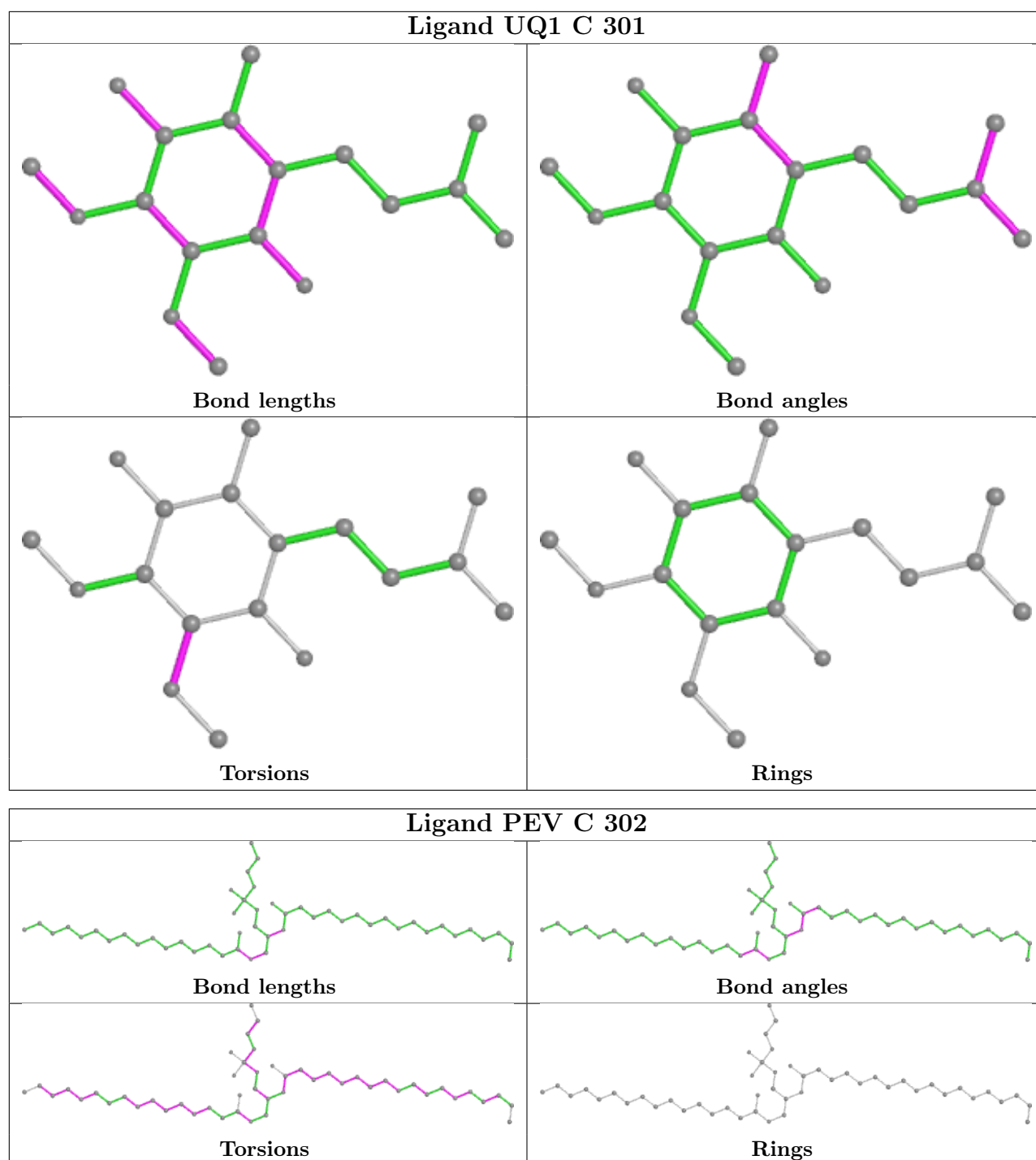
There are no ring outliers.

3 monomers are involved in 14 short contacts:

Mol	Chain	Res	Type	Clashes	Symm-Clashes
4	A	701	FAD	6	0
7	B	303	F3S	4	0
9	C	302	PEV	4	0

The following is a two-dimensional graphical depiction of Mogul quality analysis of bond lengths, bond angles, torsion angles, and ring geometry for all instances of the Ligand of Interest. In addition, ligands with molecular weight > 250 and outliers as shown on the validation Tables will also be included. For torsion angles, if less than 5% of the Mogul distribution of torsion angles is within 10 degrees of the torsion angle in question, then that torsion angle is considered an outlier. Any bond that is central to one or more torsion angles identified as an outlier by Mogul will be highlighted in the graph. For rings, the root-mean-square deviation (RMSD) between the ring in question and similar rings identified by Mogul is calculated over all ring torsion angles. If the average RMSD is greater than 60 degrees and the minimal RMSD between the ring in question and any Mogul-identified rings is also greater than 60 degrees, then that ring is considered an outlier. The outliers are highlighted in purple. The color gray indicates Mogul did not find sufficient equivalents in the CSD to analyse the geometry.





## 5.7 Other polymers [i](#)

There are no such residues in this entry.

## 5.8 Polymer linkage issues [i](#)

There are no chain breaks in this entry.

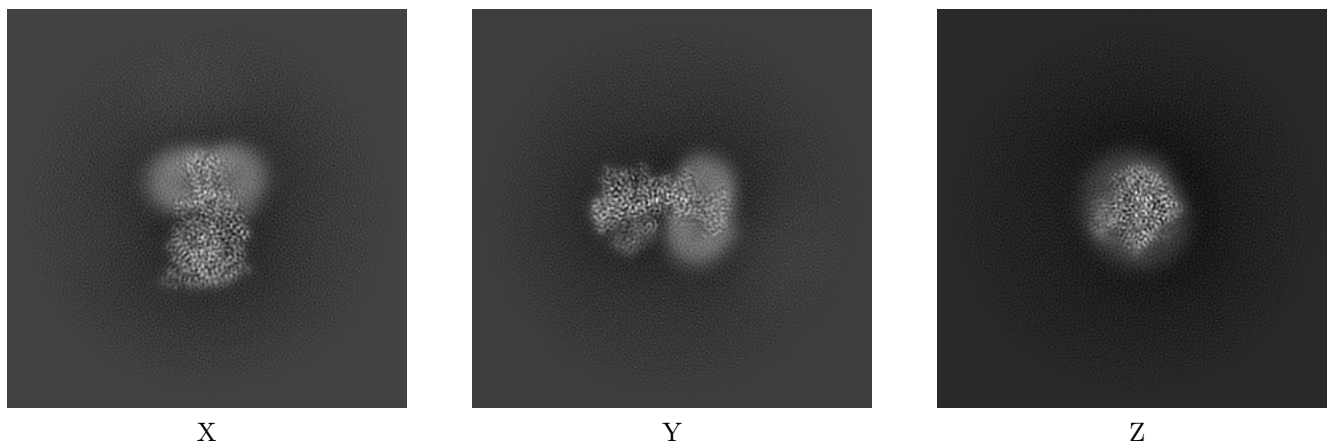
## 6 Map visualisation [i](#)

This section contains visualisations of the EMDB entry EMD-30594. These allow visual inspection of the internal detail of the map and identification of artifacts.

No raw map or half-maps were deposited for this entry and therefore no images, graphs, etc. pertaining to the raw map can be shown.

### 6.1 Orthogonal projections [i](#)

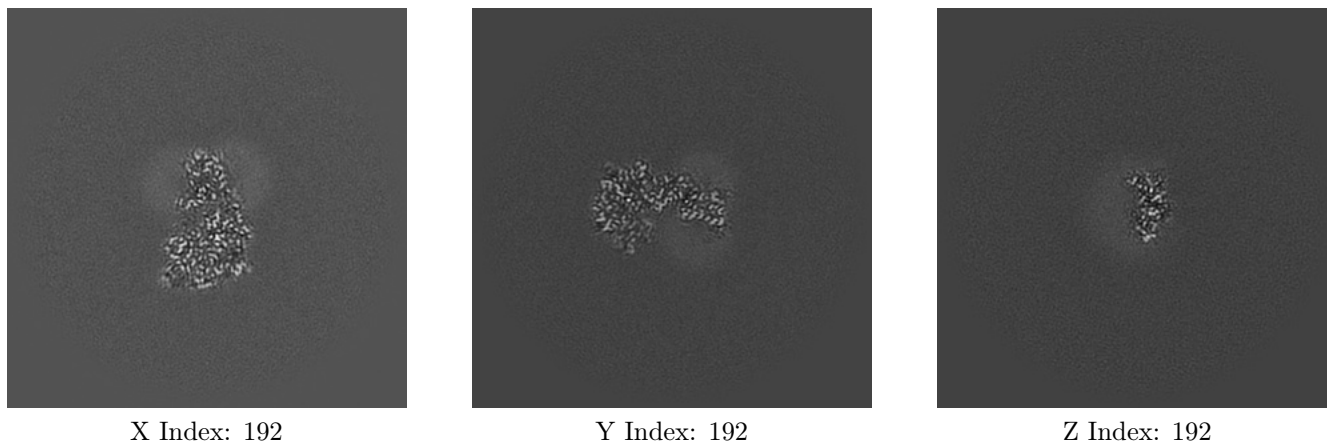
#### 6.1.1 Primary map



The images above show the map projected in three orthogonal directions.

### 6.2 Central slices [i](#)

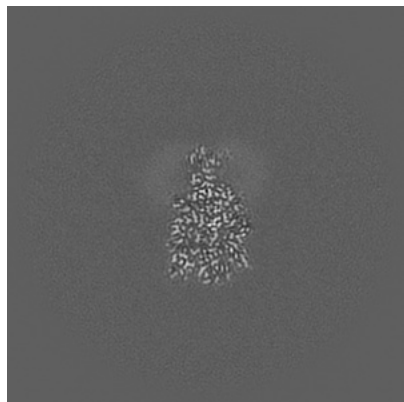
#### 6.2.1 Primary map



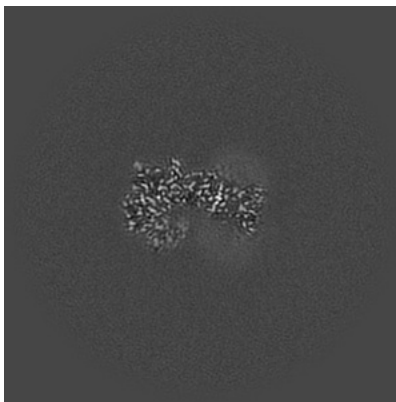
The images above show central slices of the map in three orthogonal directions.

## 6.3 Largest variance slices [i](#)

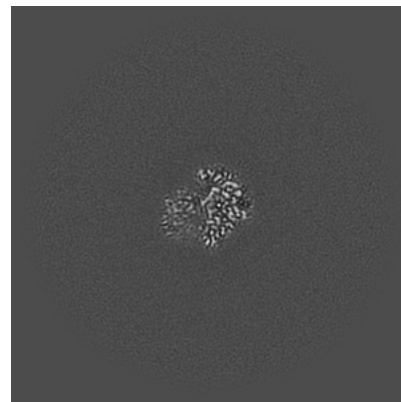
### 6.3.1 Primary map



X Index: 201



Y Index: 189

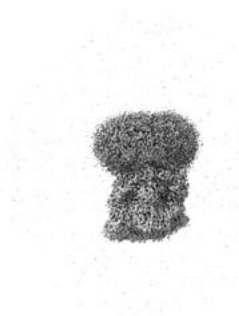


Z Index: 151

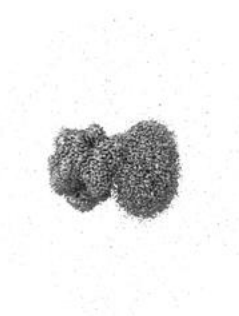
The images above show the largest variance slices of the map in three orthogonal directions.

## 6.4 Orthogonal surface views [i](#)

### 6.4.1 Primary map



X



Y



Z

The images above show the 3D surface view of the map at the recommended contour level 0.3. These images, in conjunction with the slice images, may facilitate assessment of whether an appropriate contour level has been provided.

## 6.5 Mask visualisation

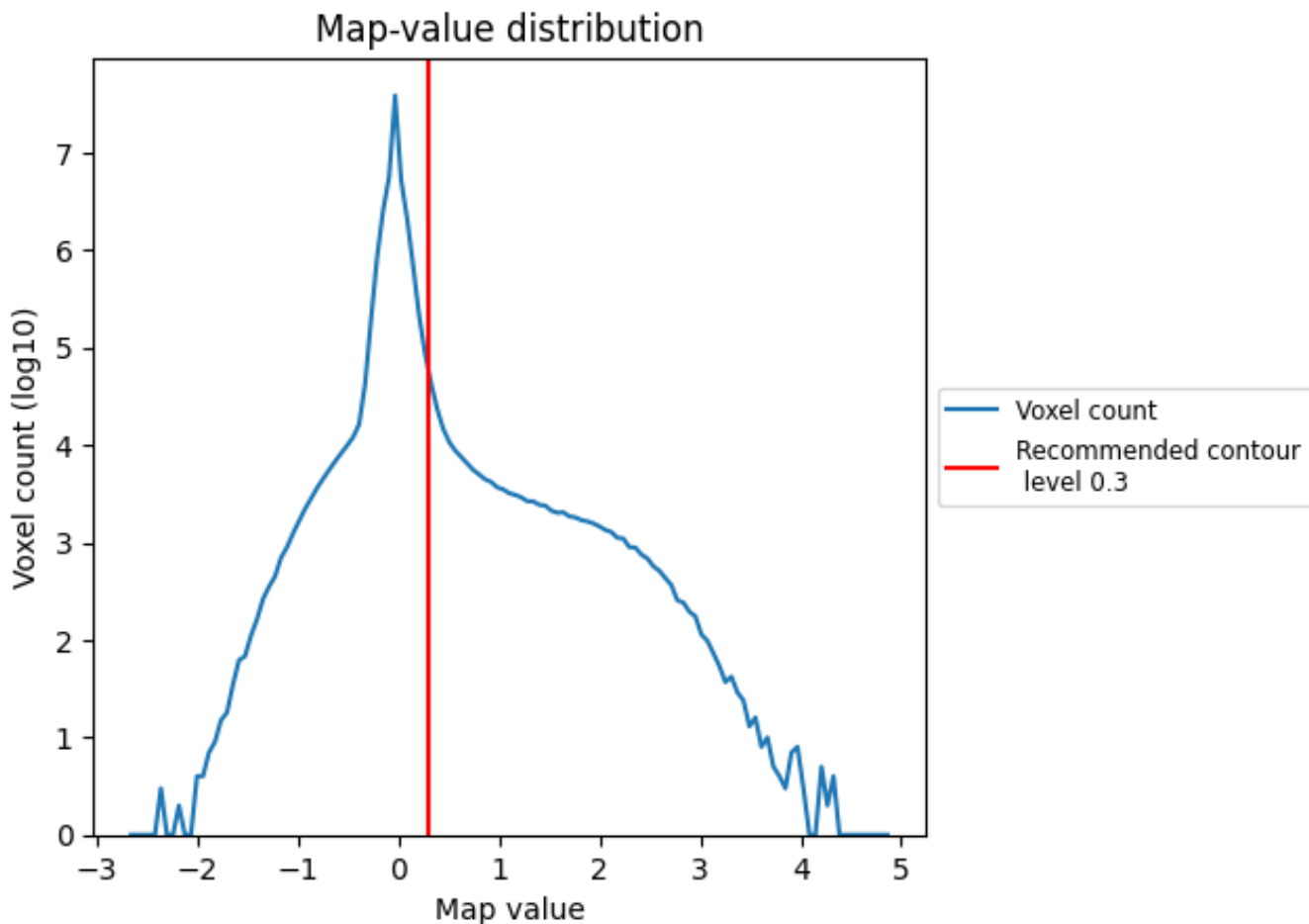
This section was not generated. No masks/segmentation were deposited.



## 7 Map analysis [i](#)

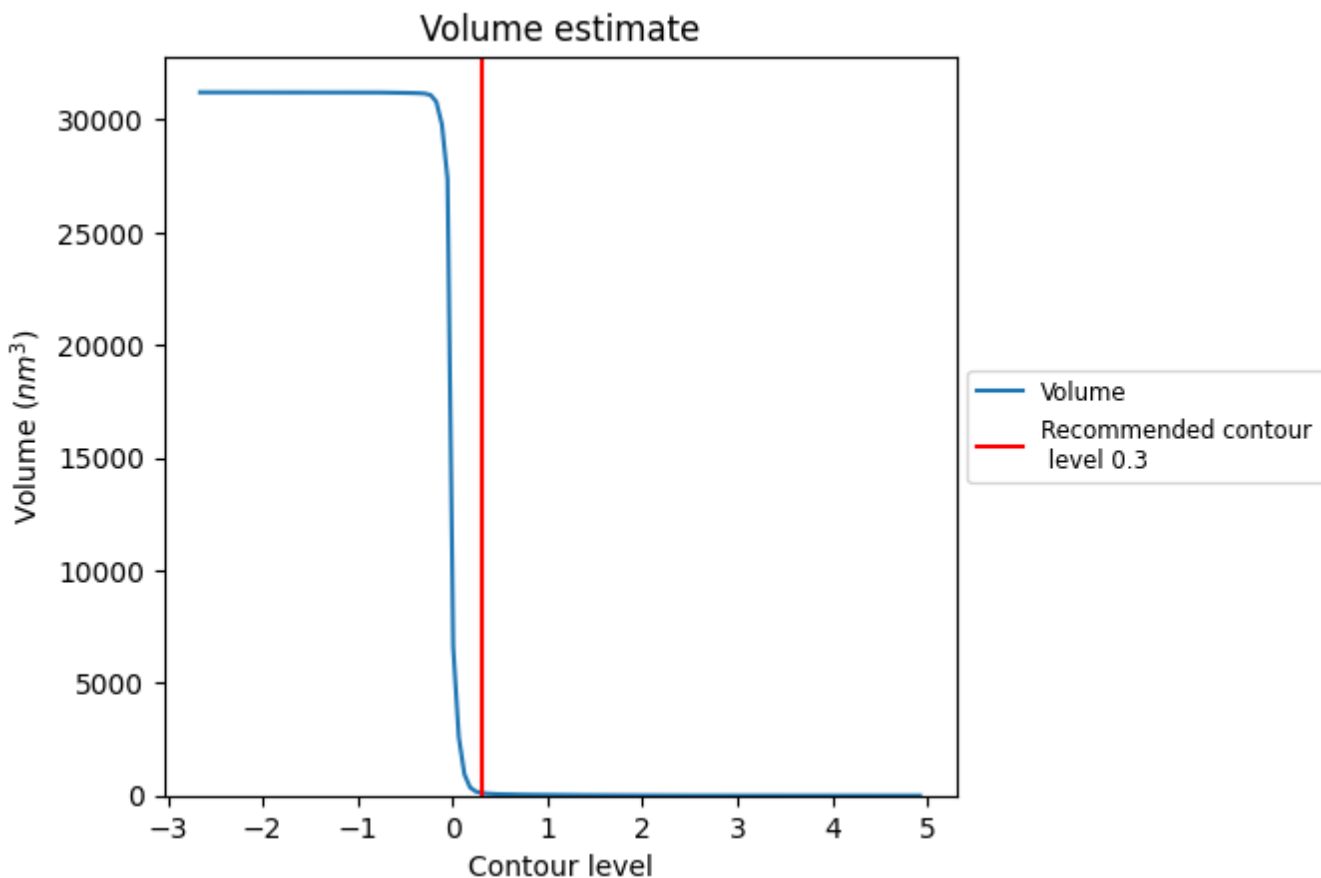
This section contains the results of statistical analysis of the map.

### 7.1 Map-value distribution [i](#)



The map-value distribution is plotted in 128 intervals along the x-axis. The y-axis is logarithmic. A spike in this graph at zero usually indicates that the volume has been masked.

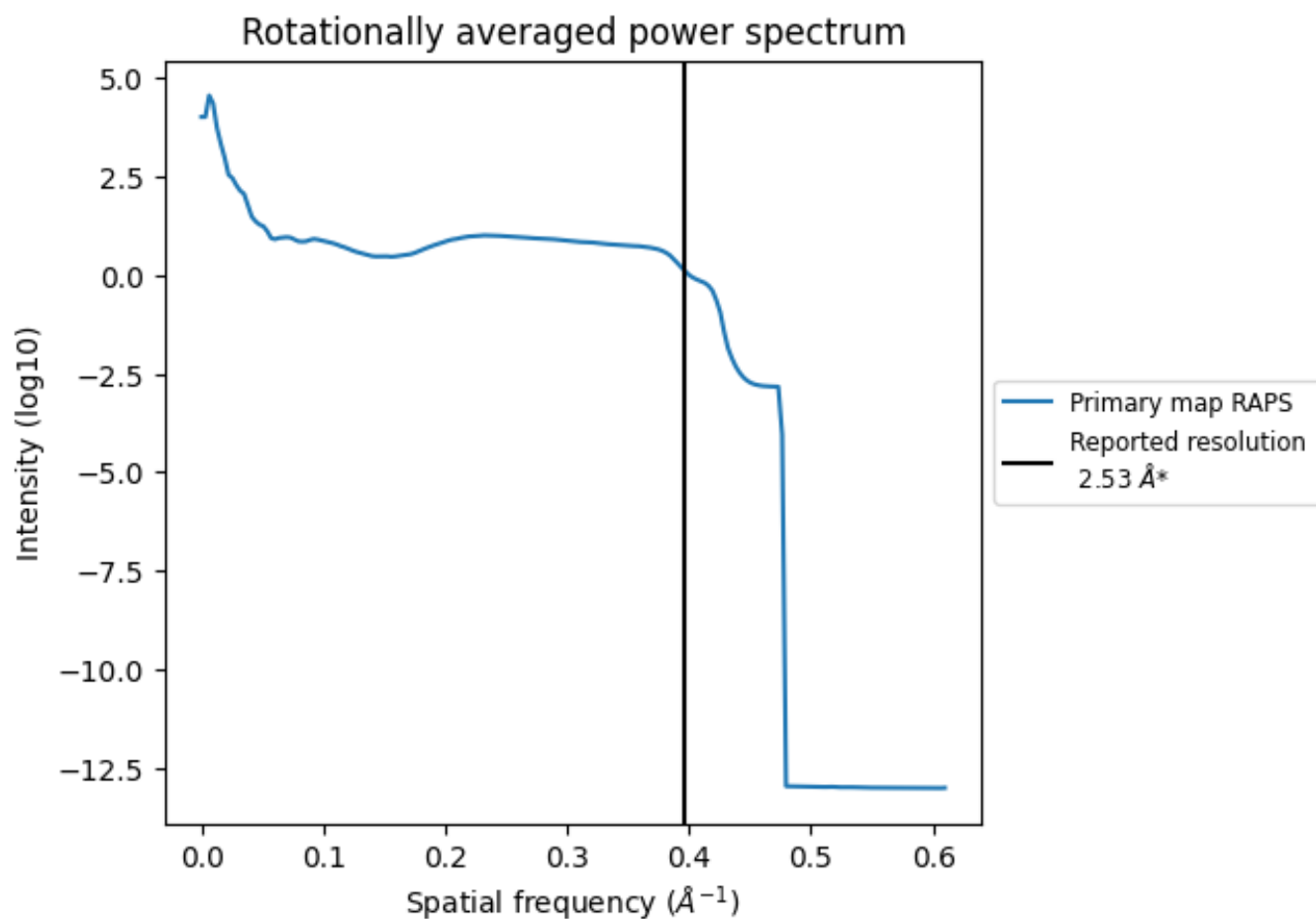
## 7.2 Volume estimate [i](#)



The volume at the recommended contour level is 121  $\text{nm}^3$ ; this corresponds to an approximate mass of 109 kDa.

The volume estimate graph shows how the enclosed volume varies with the contour level. The recommended contour level is shown as a vertical line and the intersection between the line and the curve gives the volume of the enclosed surface at the given level.

### 7.3 Rotationally averaged power spectrum [i](#)



\*Reported resolution corresponds to spatial frequency of 0.395 Å<sup>-1</sup>

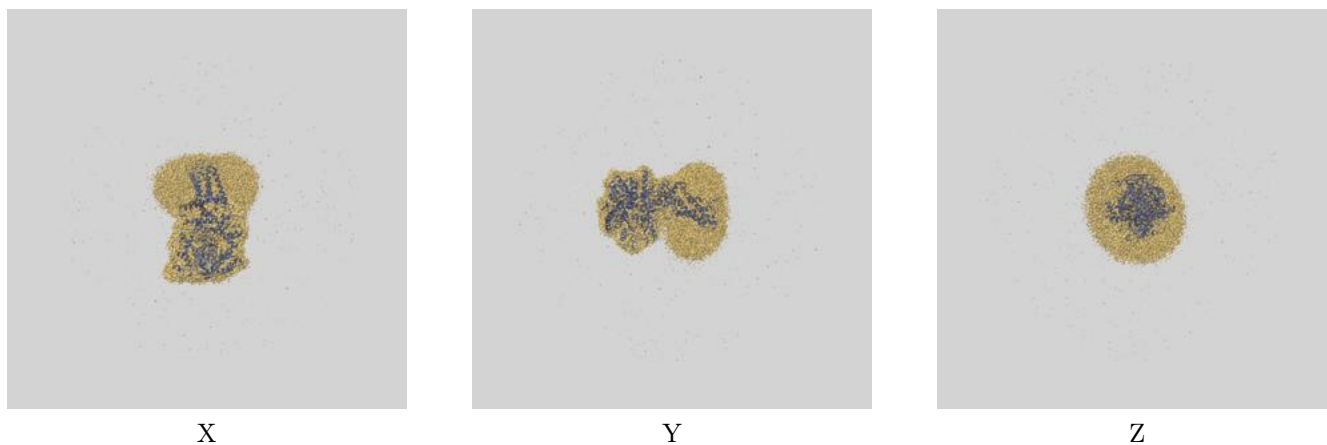
## 8 Fourier-Shell correlation

This section was not generated. No FSC curve or half-maps provided.

## 9 Map-model fit [i](#)

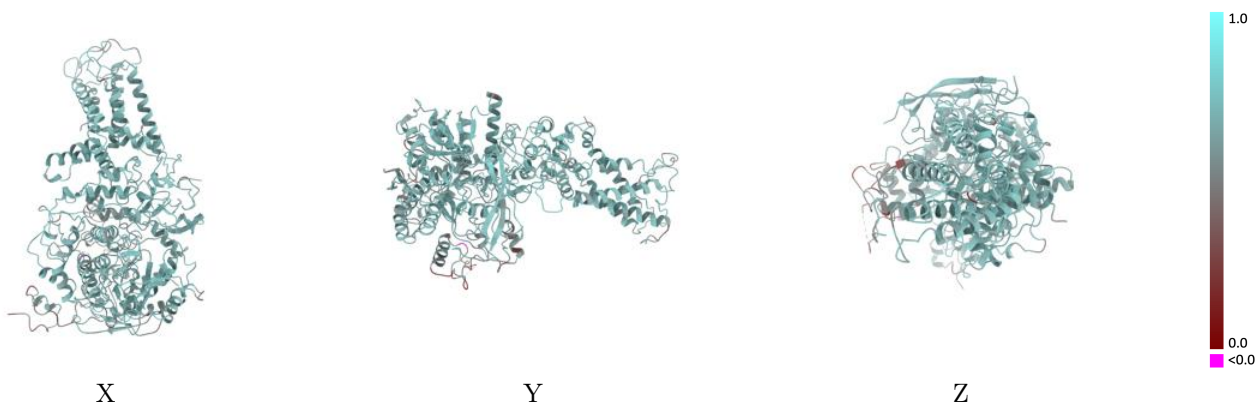
This section contains information regarding the fit between EMDB map EMD-30594 and PDB model 7D6V. Per-residue inclusion information can be found in section 3 on page 7.

### 9.1 Map-model overlay [i](#)



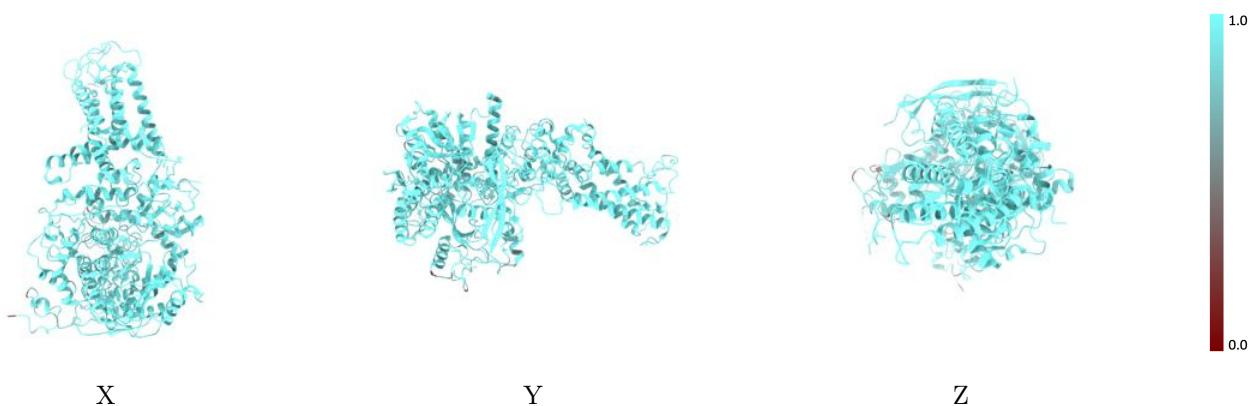
The images above show the 3D surface view of the map at the recommended contour level 0.3 at 50% transparency in yellow overlaid with a ribbon representation of the model coloured in blue. These images allow for the visual assessment of the quality of fit between the atomic model and the map.

## 9.2 Q-score mapped to coordinate model [i](#)



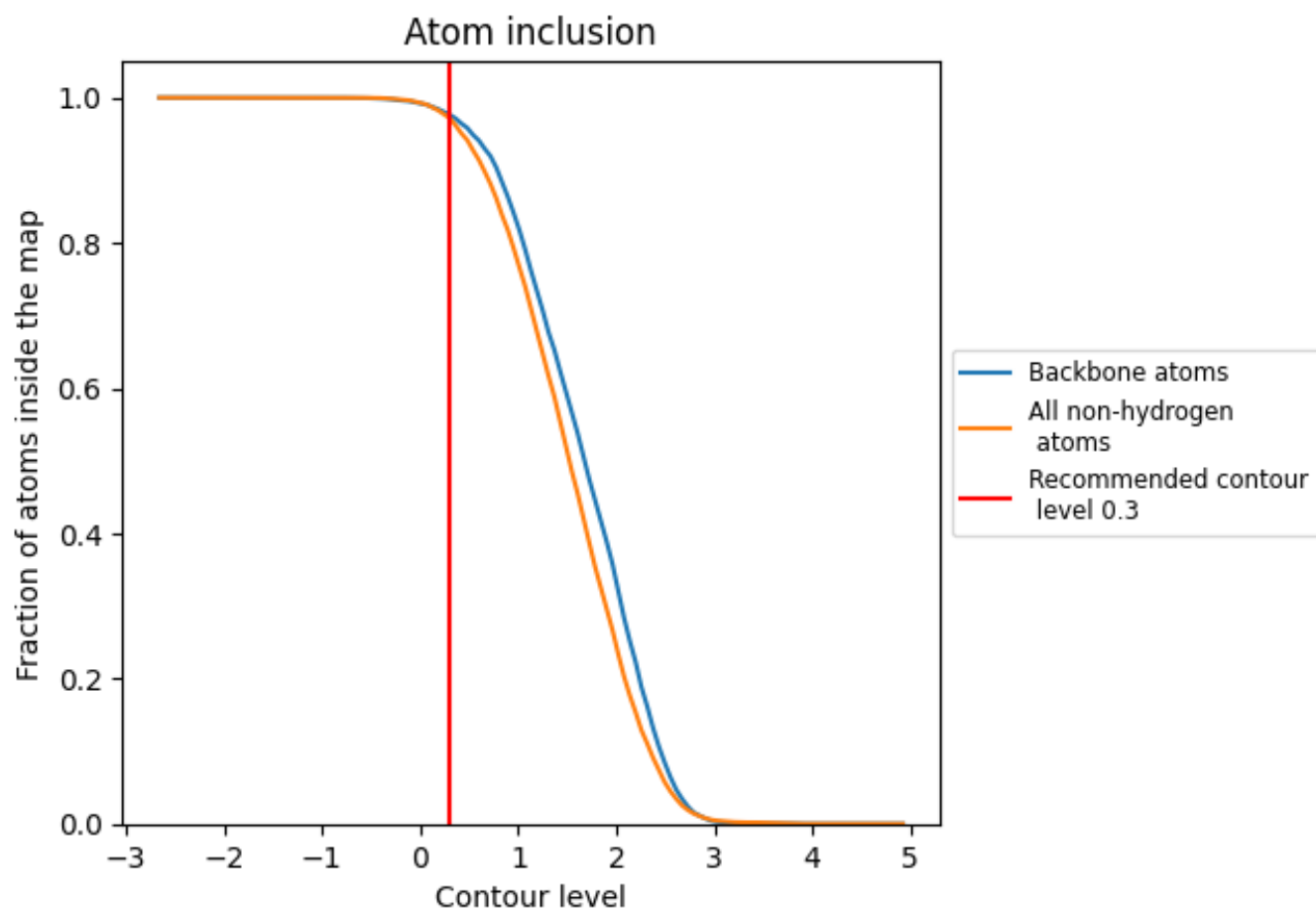
The images above show the model with each residue coloured according to its Q-score. This shows their resolvability in the map with higher Q-score values reflecting better resolvability. Please note: Q-score is calculating the resolvability of atoms, and thus high values are only expected at resolutions at which atoms can be resolved. Low Q-score values may therefore be expected for many entries.

## 9.3 Atom inclusion mapped to coordinate model [i](#)



The images above show the model with each residue coloured according to its atom inclusion. This shows to what extent they are inside the map at the recommended contour level (0.3).









## 9.4 Atom inclusion [i](#)



At the recommended contour level, 98% of all backbone atoms, 97% of all non-hydrogen atoms, are inside the map.

## 9.5 Map-model fit summary

The table lists the average atom inclusion at the recommended contour level (0.3) and Q-score for the entire model and for each chain.

Chain	Atom inclusion	Q-score
All	 0.9718	 0.6360
A	 0.9623	 0.6190
B	 0.9814	 0.6650
C	 0.9833	 0.6470

