



wwPDB X-ray Structure Validation Summary Report ⓘ

May 19, 2020 – 01:16 am BST

PDB ID : 4D9C
Title : PMP bound form of Salmonella typhimurium D-Cysteine desulphydrase obtained after co-crystallization with L-cycloserine
Authors : Bharath, S.R.; Shveta, B.; Rajesh, K.H.; Savithri, H.S.; Murthy, M.R.N.
Deposited on : 2012-01-11
Resolution : 1.97 Å(reported)

This is a wwPDB X-ray Structure Validation Summary Report for a publicly released PDB entry.

We welcome your comments at validation@mail.wwpdb.org

A user guide is available at

<https://www.wwpdb.org/validation/2017/XrayValidationReportHelp>

with specific help available everywhere you see the ⓘ symbol.

The following versions of software and data (see [references ⓘ](#)) were used in the production of this report:

MolProbity : 4.02b-467
Mogul : 1.8.5 (274361), CSD as541be (2020)
Xtriage (Phenix) : 1.13
EDS : 2.11
Percentile statistics : 20191225.v01 (using entries in the PDB archive December 25th 2019)
Refmac : 5.8.0158
CCP4 : 7.0.044 (Gargrove)
Ideal geometry (proteins) : Engh & Huber (2001)
Ideal geometry (DNA, RNA) : Parkinson et al. (1996)
Validation Pipeline (wwPDB-VP) : 2.11

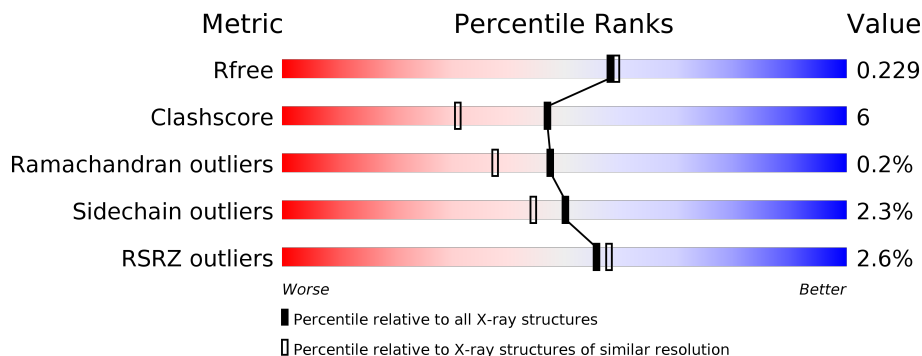
1 Overall quality at a glance

The following experimental techniques were used to determine the structure:

X-RAY DIFFRACTION

The reported resolution of this entry is 1.97 Å.

Percentile scores (ranging between 0-100) for global validation metrics of the entry are shown in the following graphic. The table shows the number of entries on which the scores are based.



Metric	Whole archive (#Entries)	Similar resolution (#Entries, resolution range(Å))
R_{free}	130704	11647 (2.00-1.96)
Clashscore	141614	1014 (1.98-1.98)
Ramachandran outliers	138981	1006 (1.98-1.98)
Sidechain outliers	138945	1006 (1.98-1.98)
RSRZ outliers	127900	11410 (2.00-1.96)

The table below summarises the geometric issues observed across the polymeric chains and their fit to the electron density. The red, orange, yellow and green segments on the lower bar indicate the fraction of residues that contain outliers for ≥ 3 , 2, 1 and 0 types of geometric quality criteria respectively. A grey segment represents the fraction of residues that are not modelled. The numeric value for each fraction is indicated below the corresponding segment, with a dot representing fractions $\leq 5\%$. The upper red bar (where present) indicates the fraction of residues that have poor fit to the electron density. The numeric value is given above the bar.

Mol	Chain	Length	Quality of chain
1	A	342	 85% 11% • •
1	B	342	 80% 13% • 7%
1	C	342	 81% 11% • 6%
1	D	342	 81% 12% • •

2 Entry composition [i](#)

There are 4 unique types of molecules in this entry. The entry contains 10545 atoms, of which 0 are hydrogens and 0 are deuteriums.

In the tables below, the ZeroOcc column contains the number of atoms modelled with zero occupancy, the AltConf column contains the number of residues with at least one atom in alternate conformation and the Trace column contains the number of residues modelled with at most 2 atoms.

- Molecule 1 is a protein called D-Cysteine desulphydrase.

Mol	Chain	Residues	Atoms					ZeroOcc	AltConf	Trace
			Total	C	N	O	S			
1	A	328	Total 2452	C 1565	N 418	O 460	S 9	0	3	0
1	B	319	Total 2386	C 1519	N 403	O 455	S 9	0	3	0
1	C	321	Total 2409	C 1535	N 411	O 454	S 9	0	4	0
1	D	328	Total 2462	C 1571	N 418	O 464	S 9	0	4	0

There are 56 discrepancies between the modelled and reference sequences:

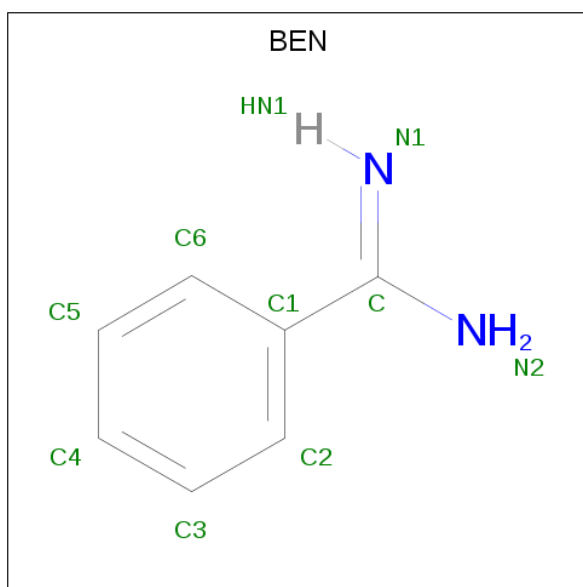
Chain	Residue	Modelled	Actual	Comment	Reference
A	-13	MET	-	EXPRESSION TAG	UNP Q8ZNT7
A	-12	ARG	-	EXPRESSION TAG	UNP Q8ZNT7
A	-11	GLY	-	EXPRESSION TAG	UNP Q8ZNT7
A	-10	SER	-	EXPRESSION TAG	UNP Q8ZNT7
A	-9	HIS	-	EXPRESSION TAG	UNP Q8ZNT7
A	-8	HIS	-	EXPRESSION TAG	UNP Q8ZNT7
A	-7	HIS	-	EXPRESSION TAG	UNP Q8ZNT7
A	-6	HIS	-	EXPRESSION TAG	UNP Q8ZNT7
A	-5	HIS	-	EXPRESSION TAG	UNP Q8ZNT7
A	-4	HIS	-	EXPRESSION TAG	UNP Q8ZNT7
A	-3	GLY	-	EXPRESSION TAG	UNP Q8ZNT7
A	-2	MET	-	EXPRESSION TAG	UNP Q8ZNT7
A	-1	ALA	-	EXPRESSION TAG	UNP Q8ZNT7
A	0	SER	-	EXPRESSION TAG	UNP Q8ZNT7
B	-13	MET	-	EXPRESSION TAG	UNP Q8ZNT7
B	-12	ARG	-	EXPRESSION TAG	UNP Q8ZNT7
B	-11	GLY	-	EXPRESSION TAG	UNP Q8ZNT7
B	-10	SER	-	EXPRESSION TAG	UNP Q8ZNT7
B	-9	HIS	-	EXPRESSION TAG	UNP Q8ZNT7
B	-8	HIS	-	EXPRESSION TAG	UNP Q8ZNT7
B	-7	HIS	-	EXPRESSION TAG	UNP Q8ZNT7

Continued on next page...

Continued from previous page...

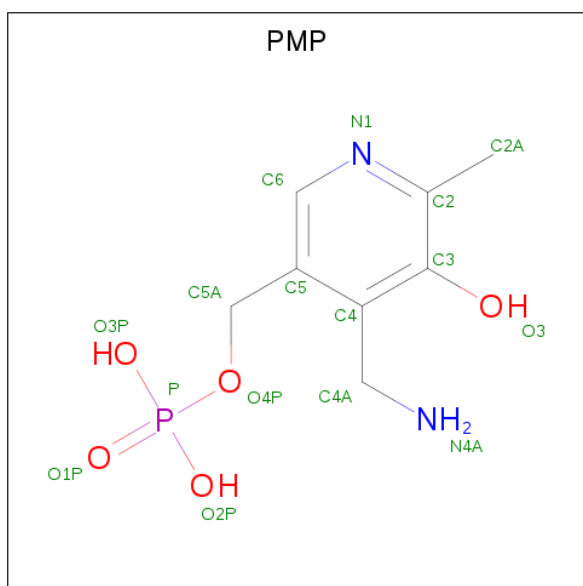
Chain	Residue	Modelled	Actual	Comment	Reference
B	-6	HIS	-	EXPRESSION TAG	UNP Q8ZNT7
B	-5	HIS	-	EXPRESSION TAG	UNP Q8ZNT7
B	-4	HIS	-	EXPRESSION TAG	UNP Q8ZNT7
B	-3	GLY	-	EXPRESSION TAG	UNP Q8ZNT7
B	-2	MET	-	EXPRESSION TAG	UNP Q8ZNT7
B	-1	ALA	-	EXPRESSION TAG	UNP Q8ZNT7
B	0	SER	-	EXPRESSION TAG	UNP Q8ZNT7
C	-13	MET	-	EXPRESSION TAG	UNP Q8ZNT7
C	-12	ARG	-	EXPRESSION TAG	UNP Q8ZNT7
C	-11	GLY	-	EXPRESSION TAG	UNP Q8ZNT7
C	-10	SER	-	EXPRESSION TAG	UNP Q8ZNT7
C	-9	HIS	-	EXPRESSION TAG	UNP Q8ZNT7
C	-8	HIS	-	EXPRESSION TAG	UNP Q8ZNT7
C	-7	HIS	-	EXPRESSION TAG	UNP Q8ZNT7
C	-6	HIS	-	EXPRESSION TAG	UNP Q8ZNT7
C	-5	HIS	-	EXPRESSION TAG	UNP Q8ZNT7
C	-4	HIS	-	EXPRESSION TAG	UNP Q8ZNT7
C	-3	GLY	-	EXPRESSION TAG	UNP Q8ZNT7
C	-2	MET	-	EXPRESSION TAG	UNP Q8ZNT7
C	-1	ALA	-	EXPRESSION TAG	UNP Q8ZNT7
C	0	SER	-	EXPRESSION TAG	UNP Q8ZNT7
D	-13	MET	-	EXPRESSION TAG	UNP Q8ZNT7
D	-12	ARG	-	EXPRESSION TAG	UNP Q8ZNT7
D	-11	GLY	-	EXPRESSION TAG	UNP Q8ZNT7
D	-10	SER	-	EXPRESSION TAG	UNP Q8ZNT7
D	-9	HIS	-	EXPRESSION TAG	UNP Q8ZNT7
D	-8	HIS	-	EXPRESSION TAG	UNP Q8ZNT7
D	-7	HIS	-	EXPRESSION TAG	UNP Q8ZNT7
D	-6	HIS	-	EXPRESSION TAG	UNP Q8ZNT7
D	-5	HIS	-	EXPRESSION TAG	UNP Q8ZNT7
D	-4	HIS	-	EXPRESSION TAG	UNP Q8ZNT7
D	-3	GLY	-	EXPRESSION TAG	UNP Q8ZNT7
D	-2	MET	-	EXPRESSION TAG	UNP Q8ZNT7
D	-1	ALA	-	EXPRESSION TAG	UNP Q8ZNT7
D	0	SER	-	EXPRESSION TAG	UNP Q8ZNT7

- Molecule 2 is BENZAMIDINE (three-letter code: BEN) (formula: C₇H₈N₂).



Mol	Chain	Residues	Atoms			ZeroOcc	AltConf
2	A	1	Total	C	N	0	0
			9	7	2		
2	C	1	Total	C	N	0	0
			9	7	2		
2	D	1	Total	C	N	0	0
			9	7	2		

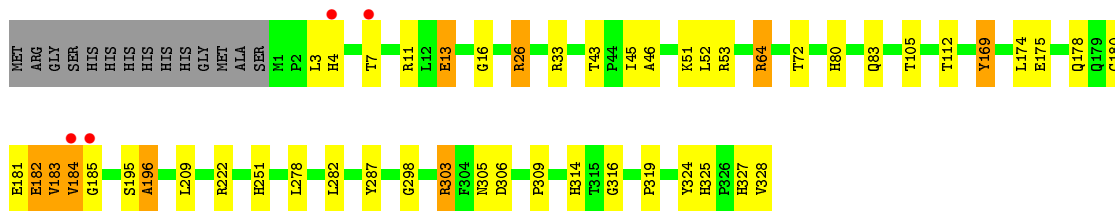
- Molecule 3 is 4'-DEOXY-4'-AMINOPYRIDOXAL-5'-PHOSPHATE (three-letter code: PMP) (formula: $C_8H_{13}N_2O_5P$).



Mol	Chain	Residues	Atoms					ZeroOcc	AltConf
3	A	1	Total	C	N	O	P	0	0
			16	8	2	5	1		
3	B	1	Total	C	N	O	P	0	0
			16	8	2	5	1		
3	C	1	Total	C	N	O	P	0	0
			16	8	2	5	1		
3	D	1	Total	C	N	O	P	0	0
			16	8	2	5	1		

- Molecule 4 is water.

Mol	Chain	Residues	Atoms		ZeroOcc	AltConf
4	A	234	Total	O	0	0
			234	234		
4	B	152	Total	O	0	0
			152	152		
4	C	142	Total	O	0	0
			142	142		
4	D	217	Total	O	0	0
			217	217		



4 Data and refinement statistics

Property	Value	Source
Space group	P 1 21 1	Depositor
Cell constants a, b, c, α , β , γ	66.51Å 165.50Å 68.64Å 90.00° 118.89° 90.00°	Depositor
Resolution (Å)	33.71 – 1.97 33.71 – 1.97	Depositor EDS
% Data completeness (in resolution range)	99.8 (33.71-1.97) 99.8 (33.71-1.97)	Depositor EDS
R_{merge}	0.10	Depositor
R_{sym}	(Not available)	Depositor
$\langle I/\sigma(I) \rangle$ ¹	11.85 (at 1.97Å)	Xtriage
Refinement program	REFMAC 5.5.0109	Depositor
R, R_{free}	0.175 , 0.231 0.175 , 0.229	Depositor DCC
R_{free} test set	4597 reflections (5.01%)	wwPDB-VP
Wilson B-factor (Å ²)	21.7	Xtriage
Anisotropy	0.094	Xtriage
Bulk solvent k_{sol} (e/Å ³), B_{sol} (Å ²)	0.36 , 54.2	EDS
L-test for twinning ²	$\langle L \rangle = 0.50$, $\langle L^2 \rangle = 0.33$	Xtriage
Estimated twinning fraction	0.000 for -h-l,k,h 0.000 for l,k,-h-l 0.019 for h,-k,-h-l 0.022 for -h-l,-k,l 0.018 for l,-k,h	Xtriage
F_o, F_c correlation	0.95	EDS
Total number of atoms	10545	wwPDB-VP
Average B, all atoms (Å ²)	23.0	wwPDB-VP

Xtriage's analysis on translational NCS is as follows: *The largest off-origin peak in the Patterson function is 3.82% of the height of the origin peak. No significant pseudotranslation is detected.*

¹Intensities estimated from amplitudes.

²Theoretical values of $\langle |L| \rangle$, $\langle L^2 \rangle$ for acentric reflections are 0.5, 0.333 respectively for untwinned datasets, and 0.375, 0.2 for perfectly twinned datasets.

5 Model quality [i](#)

5.1 Standard geometry [i](#)

Bond lengths and bond angles in the following residue types are not validated in this section: BEN, PMP

The Z score for a bond length (or angle) is the number of standard deviations the observed value is removed from the expected value. A bond length (or angle) with $|Z| > 5$ is considered an outlier worth inspection. RMSZ is the root-mean-square of all Z scores of the bond lengths (or angles).

Mol	Chain	Bond lengths		Bond angles	
		RMSZ	# Z >5	RMSZ	# Z >5
1	A	1.23	8/2506 (0.3%)	1.01	6/3418 (0.2%)
1	B	1.10	5/2439 (0.2%)	0.99	5/3322 (0.2%)
1	C	1.16	4/2463 (0.2%)	1.07	7/3355 (0.2%)
1	D	1.13	2/2518 (0.1%)	1.04	7/3432 (0.2%)
All	All	1.16	19/9926 (0.2%)	1.03	25/13527 (0.2%)

The worst 5 of 19 bond length outliers are listed below:

Mol	Chain	Res	Type	Atoms	Z	Observed(Å)	Ideal(Å)
1	C	207	GLU	CB-CG	7.98	1.67	1.52
1	A	169	TYR	CD2-CE2	7.38	1.50	1.39
1	A	272	VAL	CB-CG2	7.01	1.67	1.52
1	A	318	ALA	CA-CB	6.34	1.65	1.52
1	D	324	TYR	CD2-CE2	6.05	1.48	1.39

The worst 5 of 25 bond angle outliers are listed below:

Mol	Chain	Res	Type	Atoms	Z	Observed(°)	Ideal(°)
1	D	26	ARG	NE-CZ-NH1	15.54	128.07	120.30
1	D	26	ARG	NE-CZ-NH2	-15.30	112.65	120.30
1	C	26	ARG	NE-CZ-NH2	-13.96	113.32	120.30
1	B	26	ARG	NE-CZ-NH2	-13.41	113.60	120.30
1	C	26	ARG	NE-CZ-NH1	12.47	126.53	120.30

There are no chirality outliers.

There are no planarity outliers.

5.2 Too-close contacts [i](#)

In the following table, the Non-H and H(model) columns list the number of non-hydrogen atoms and hydrogen atoms in the chain respectively. The H(added) column lists the number of hydrogen atoms added and optimized by MolProbity. The Clashes column lists the number of clashes within the asymmetric unit, whereas Symm-Clashes lists symmetry related clashes.

Mol	Chain	Non-H	H(model)	H(added)	Clashes	Symm-Clashes
1	A	2452	0	2467	25	0
1	B	2386	0	2403	29	0
1	C	2409	0	2428	33	0
1	D	2462	0	2478	37	0
2	A	9	0	7	0	0
2	C	9	0	7	0	0
2	D	9	0	7	0	0
3	A	16	0	10	0	0
3	B	16	0	10	1	0
3	C	16	0	11	3	0
3	D	16	0	10	1	0
4	A	234	0	0	4	0
4	B	152	0	0	3	0
4	C	142	0	0	4	0
4	D	217	0	0	4	0
All	All	10545	0	9838	121	0

The all-atom clashscore is defined as the number of clashes found per 1000 atoms (including hydrogen atoms). The all-atom clashscore for this structure is 6.

The worst 5 of 121 close contacts within the same asymmetric unit are listed below, sorted by their clash magnitude.

Atom-1	Atom-2	Interatomic distance (Å)	Clash overlap (Å)
1:C:64:ARG:HG2	1:C:64:ARG:HH11	0.99	1.09
1:D:64:ARG:HG2	1:D:64:ARG:HH11	0.97	1.08
1:D:184:VAL:O	1:D:184:VAL:HG13	1.60	0.98
1:D:64:ARG:HG2	1:D:64:ARG:NH1	1.75	0.97
1:D:105:THR:OG1	1:D:328[A]:VAL:HG12	1.66	0.96

There are no symmetry-related clashes.

5.3 Torsion angles [i](#)

5.3.1 Protein backbone [i](#)

In the following table, the Percentiles column shows the percent Ramachandran outliers of the chain as a percentile score with respect to all X-ray entries followed by that with respect to entries of similar resolution.

The Analysed column shows the number of residues for which the backbone conformation was analysed, and the total number of residues.

Mol	Chain	Analysed	Favoured	Allowed	Outliers	Percentiles	
1	A	329/342 (96%)	319 (97%)	10 (3%)	0	100	100
1	B	318/342 (93%)	310 (98%)	8 (2%)	0	100	100
1	C	322/342 (94%)	306 (95%)	15 (5%)	1 (0%)	41	29
1	D	329/342 (96%)	317 (96%)	10 (3%)	2 (1%)	25	14
All	All	1298/1368 (95%)	1252 (96%)	43 (3%)	3 (0%)	47	38

All (3) Ramachandran outliers are listed below:

Mol	Chain	Res	Type
1	D	182	GLU
1	C	196	ALA
1	D	196	ALA

5.3.2 Protein sidechains [i](#)

In the following table, the Percentiles column shows the percent sidechain outliers of the chain as a percentile score with respect to all X-ray entries followed by that with respect to entries of similar resolution.

The Analysed column shows the number of residues for which the sidechain conformation was analysed, and the total number of residues.

Mol	Chain	Analysed	Rotameric	Outliers	Percentiles	
1	A	253/267 (95%)	251 (99%)	2 (1%)	81	80
1	B	249/267 (93%)	241 (97%)	8 (3%)	39	28
1	C	250/267 (94%)	244 (98%)	6 (2%)	49	41
1	D	255/267 (96%)	248 (97%)	7 (3%)	44	35
All	All	1007/1068 (94%)	984 (98%)	23 (2%)	50	44

5 of 23 residues with a non-rotameric sidechain are listed below:

Mol	Chain	Res	Type
1	C	13	GLU
1	C	52	LEU
1	D	303	ARG
1	C	33	ARG
1	C	64	ARG

Some sidechains can be flipped to improve hydrogen bonding and reduce clashes. 5 of 33 such sidechains are listed below:

Mol	Chain	Res	Type
1	B	305	ASN
1	C	83	GLN
1	D	251	HIS
1	B	314	HIS
1	B	325	HIS

5.3.3 RNA [i](#)

There are no RNA molecules in this entry.

5.4 Non-standard residues in protein, DNA, RNA chains [i](#)

There are no non-standard protein/DNA/RNA residues in this entry.

5.5 Carbohydrates [i](#)

There are no carbohydrates in this entry.

5.6 Ligand geometry [i](#)

7 ligands are modelled in this entry.

In the following table, the Counts columns list the number of bonds (or angles) for which Mogul statistics could be retrieved, the number of bonds (or angles) that are observed in the model and the number of bonds (or angles) that are defined in the Chemical Component Dictionary. The Link column lists molecule types, if any, to which the group is linked. The Z score for a bond length (or angle) is the number of standard deviations the observed value is removed from the expected value. A bond length (or angle) with $|Z| > 2$ is considered an outlier worth inspection. RMSZ is the root-mean-square of all Z scores of the bond lengths (or angles).

Mol	Type	Chain	Res	Link	Bond lengths			Bond angles		
					Counts	RMSZ	# Z > 2	Counts	RMSZ	# Z > 2
2	BEN	D	401	-	9,9,9	1.29	0	7,11,11	1.48	2 (28%)
3	PMP	B	401	-	16,16,16	1.02	1 (6%)	21,23,23	1.60	5 (23%)
3	PMP	D	402	-	16,16,16	1.15	1 (6%)	21,23,23	1.25	4 (19%)
3	PMP	A	402	-	16,16,16	1.26	2 (12%)	21,23,23	2.05	6 (28%)
2	BEN	C	402	-	9,9,9	1.14	1 (11%)	7,11,11	1.33	1 (14%)
2	BEN	A	401	-	9,9,9	1.43	1 (11%)	7,11,11	1.64	1 (14%)
3	PMP	C	401	-	16,16,16	1.27	3 (18%)	21,23,23	1.94	5 (23%)

In the following table, the Chirals column lists the number of chiral outliers, the number of chiral centers analysed, the number of these observed in the model and the number defined in the Chemical Component Dictionary. Similar counts are reported in the Torsion and Rings columns. '-' means no outliers of that kind were identified.

Mol	Type	Chain	Res	Link	Chirals	Torsions	Rings
2	BEN	D	401	-	-	0/4/4/4	0/1/1/1
3	PMP	B	401	-	-	4/8/8/8	0/1/1/1
3	PMP	D	402	-	-	3/8/8/8	0/1/1/1
3	PMP	A	402	-	-	4/8/8/8	0/1/1/1
2	BEN	C	402	-	-	0/4/4/4	0/1/1/1
2	BEN	A	401	-	-	0/4/4/4	0/1/1/1
3	PMP	C	401	-	-	3/8/8/8	0/1/1/1

The worst 5 of 9 bond length outliers are listed below:

Mol	Chain	Res	Type	Atoms	Z	Observed(Å)	Ideal(Å)
3	C	401	PMP	C6-N1	2.85	1.40	1.34
3	A	402	PMP	C2-N1	2.81	1.39	1.33
3	D	402	PMP	C3-C4	2.51	1.43	1.40
2	C	402	BEN	C1-C	-2.48	1.42	1.47
3	C	401	PMP	C3-C4	2.46	1.43	1.40

The worst 5 of 24 bond angle outliers are listed below:

Mol	Chain	Res	Type	Atoms	Z	Observed(°)	Ideal(°)
3	C	401	PMP	C6-C5-C4	5.22	121.81	118.12
3	A	402	PMP	C2A-C2-C3	4.97	127.03	120.89
3	A	402	PMP	C6-C5-C4	4.40	121.23	118.12
3	C	401	PMP	C2A-C2-C3	3.18	124.82	120.89
3	B	401	PMP	C6-C5-C4	3.14	120.34	118.12

There are no chirality outliers.

5 of 14 torsion outliers are listed below:

Mol	Chain	Res	Type	Atoms
3	D	402	PMP	C3-C4-C4A-N4A
3	D	402	PMP	C5-C4-C4A-N4A
3	A	402	PMP	C3-C4-C4A-N4A
3	A	402	PMP	C5-C4-C4A-N4A
3	B	401	PMP	C3-C4-C4A-N4A

There are no ring outliers.

3 monomers are involved in 5 short contacts:

Mol	Chain	Res	Type	Clashes	Symm-Clashes
3	B	401	PMP	1	0
3	D	402	PMP	1	0
3	C	401	PMP	3	0

5.7 Other polymers [i](#)

There are no such residues in this entry.

5.8 Polymer linkage issues [i](#)

There are no chain breaks in this entry.

6 Fit of model and data [i](#)

6.1 Protein, DNA and RNA chains [i](#)

In the following table, the column labelled '#RSRZ > 2' contains the number (and percentage) of RSRZ outliers, followed by percent RSRZ outliers for the chain as percentile scores relative to all X-ray entries and entries of similar resolution. The OWAB column contains the minimum, median, 95th percentile and maximum values of the occupancy-weighted average B-factor per residue. The column labelled 'Q < 0.9' lists the number of (and percentage) of residues with an average occupancy less than 0.9.

Mol	Chain	Analysed	<RSRZ>	#RSRZ > 2	OWAB(Å ²)	Q < 0.9
1	A	328/342 (95%)	-0.26	4 (1%) 79 80	9, 17, 35, 42	0
1	B	319/342 (93%)	0.03	7 (2%) 62 63	12, 24, 41, 52	0
1	C	321/342 (93%)	0.28	19 (5%) 22 24	11, 22, 39, 48	0
1	D	328/342 (95%)	-0.01	4 (1%) 79 80	10, 20, 39, 48	0
All	All	1296/1368 (94%)	0.01	34 (2%) 56 58	9, 21, 39, 52	0

The worst 5 of 34 RSRZ outliers are listed below:

Mol	Chain	Res	Type	RSRZ
1	B	7	THR	4.3
1	C	8	ARG	4.2
1	D	184	VAL	4.1
1	C	183	VAL	4.1
1	B	64	ARG	3.8

6.2 Non-standard residues in protein, DNA, RNA chains [i](#)

There are no non-standard protein/DNA/RNA residues in this entry.

6.3 Carbohydrates [i](#)

There are no carbohydrates in this entry.

6.4 Ligands [i](#)

In the following table, the Atoms column lists the number of modelled atoms in the group and the number defined in the chemical component dictionary. The B-factors column lists the minimum, median, 95th percentile and maximum values of B factors of atoms in the group. The column labelled 'Q < 0.9' lists the number of atoms with occupancy less than 0.9.

Mol	Type	Chain	Res	Atoms	RSCC	RSR	B-factors(\AA^2)	Q<0.9
2	BEN	C	402	9/9	0.89	0.17	33,37,38,39	0
3	PMP	B	401	16/16	0.93	0.13	21,31,33,38	0
2	BEN	A	401	9/9	0.95	0.09	12,16,17,18	0
3	PMP	C	401	16/16	0.95	0.13	22,28,35,35	0
2	BEN	D	401	9/9	0.98	0.07	9,14,14,16	0
3	PMP	D	402	16/16	0.98	0.09	13,19,24,25	0
3	PMP	A	402	16/16	0.98	0.10	14,17,23,33	0

6.5 Other polymers [i](#)

There are no such residues in this entry.