



Full wwPDB X-ray Structure Validation Report ⓘ

Sep 5, 2023 – 06:35 PM EDT

PDB ID : 4DA3
Title : Crystal structure of an intramolecular human telomeric DNA G-quadruplex 21-mer bound by the naphthalene diimide compound MM41.
Authors : Collie, G.W.; Neidle, S.
Deposited on : 2012-01-12
Resolution : 2.40 Å(reported)

This is a Full wwPDB X-ray Structure Validation Report for a publicly released PDB entry.

We welcome your comments at validation@mail.wwpdb.org

A user guide is available at

<https://www.wwpdb.org/validation/2017/XrayValidationReportHelp>

with specific help available everywhere you see the ⓘ symbol.

The types of validation reports are described at

<http://www.wwpdb.org/validation/2017/FAQs#types>.

The following versions of software and data (see [references ⓘ](#)) were used in the production of this report:

MolProbity : 4.02b-467
Mogul : 1.8.5 (274361), CSD as541be (2020)
Xtriage (Phenix) : 1.13
EDS : 2.35
buster-report : 1.1.7 (2018)
Percentile statistics : 20191225.v01 (using entries in the PDB archive December 25th 2019)
Refmac : 5.8.0158
CCP4 : 7.0.044 (Gargrove)
Ideal geometry (proteins) : Engh & Huber (2001)
Ideal geometry (DNA, RNA) : Parkinson et al. (1996)
Validation Pipeline (wwPDB-VP) : 2.35

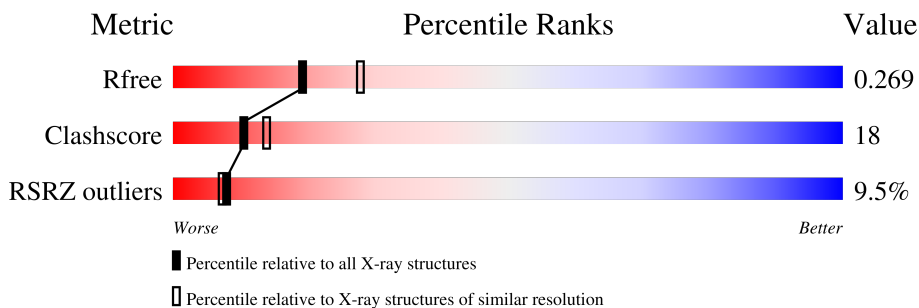
1 Overall quality at a glance

The following experimental techniques were used to determine the structure:

X-RAY DIFFRACTION

The reported resolution of this entry is 2.40 Å.

Percentile scores (ranging between 0-100) for global validation metrics of the entry are shown in the following graphic. The table shows the number of entries on which the scores are based.



Metric	Whole archive (#Entries)	Similar resolution (#Entries, resolution range(Å))
R_{free}	130704	3907 (2.40-2.40)
Clashscore	141614	4398 (2.40-2.40)
RSRZ outliers	127900	3811 (2.40-2.40)

The table below summarises the geometric issues observed across the polymeric chains and their fit to the electron density. The red, orange, yellow and green segments of the lower bar indicate the fraction of residues that contain outliers for ≥ 3 , 2, 1 and 0 types of geometric quality criteria respectively. A grey segment represents the fraction of residues that are not modelled. The numeric value for each fraction is indicated below the corresponding segment, with a dot representing fractions $\leq 5\%$. The upper red bar (where present) indicates the fraction of residues that have poor fit to the electron density. The numeric value is given above the bar.

Mol	Chain	Length	Quality of chain
1	A	21	

2 Entry composition [i](#)

There are 4 unique types of molecules in this entry. The entry contains 533 atoms, of which 0 are hydrogens and 0 are deuteriums.

In the tables below, the ZeroOcc column contains the number of atoms modelled with zero occupancy, the AltConf column contains the number of residues with at least one atom in alternate conformation and the Trace column contains the number of residues modelled with at most 2 atoms.

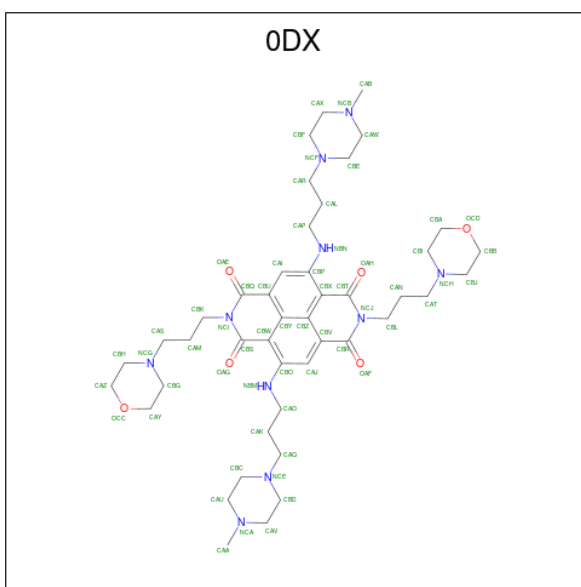
- Molecule 1 is a DNA chain called DNA (5'-D(*GP*GP*GP*TP*TP*AP*GP*GP*GP*TP*TP*AP*GP*GP*GP*TP*TP*AP*GP*GP*G)-3').

Mol	Chain	Residues	Atoms					ZeroOcc	AltConf	Trace
			Total	C	N	O	P			
1	A	21	444	210	87	127	20	0	0	0

- Molecule 2 is POTASSIUM ION (three-letter code: K) (formula: K).

Mol	Chain	Residues	Atoms		ZeroOcc	AltConf
			Total	K		
2	A	3	3	3	0	0

- Molecule 3 is 4,9-bis{[3-(4-methylpiperazin-1-yl)propyl]amino}-2,7-bis[3-(morpholin-4-yl)propyl]benzo[lmn][3,8]phenanthroline-1,3,6,8(2H,7H)-tetrone (three-letter code: ODX) (formula: C₄₄H₆₆N₁₀O₆).



Mol	Chain	Residues	Atoms				ZeroOcc	AltConf
			Total	C	N	O		
3	A	1	60	44	10	6	0	0

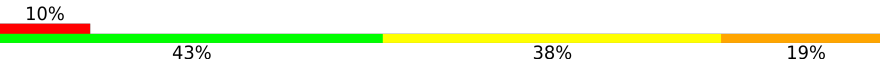
- Molecule 4 is water.

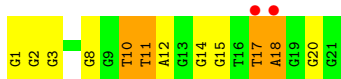
Mol	Chain	Residues	Atoms	ZeroOcc	AltConf
4	A	25	Total O 26 26	0	1

3 Residue-property plots [i](#)

These plots are drawn for all protein, RNA, DNA and oligosaccharide chains in the entry. The first graphic for a chain summarises the proportions of the various outlier classes displayed in the second graphic. The second graphic shows the sequence view annotated by issues in geometry and electron density. Residues are color-coded according to the number of geometric quality criteria for which they contain at least one outlier: green = 0, yellow = 1, orange = 2 and red = 3 or more. A red dot above a residue indicates a poor fit to the electron density ($RSRZ > 2$). Stretches of 2 or more consecutive residues without any outlier are shown as a green connector. Residues present in the sample, but not in the model, are shown in grey.

- Molecule 1: DNA (5'-D(*GP*GP*GP*TP*TP*AP*GP*GP*GP*TP*TP*AP*GP*GP*GP*TP*TP*AP*GP*GP*G)-3')

Chain A: 



4 Data and refinement statistics

Property	Value	Source
Space group	P 31 2 1	Depositor
Cell constants a, b, c, α , β , γ	51.31Å 51.31Å 51.94Å 90.00° 90.00° 120.00°	Depositor
Resolution (Å)	14.81 – 2.40 14.81 – 2.40	Depositor EDS
% Data completeness (in resolution range)	98.3 (14.81-2.40) 98.9 (14.81-2.40)	Depositor EDS
R_{merge}	0.04	Depositor
R_{sym}	(Not available)	Depositor
$\langle I/\sigma(I) \rangle$ ¹	3.42 (at 2.39Å)	Xtrriage
Refinement program	REFMAC 5.6.0117	Depositor
R, R_{free}	0.242 , 0.282 0.240 , 0.269	Depositor DCC
R_{free} test set	147 reflections (4.52%)	wwPDB-VP
Wilson B-factor (Å ²)	57.2	Xtrriage
Anisotropy	0.032	Xtrriage
Bulk solvent k_{sol} (e/Å ³), B_{sol} (Å ²)	0.26 , 72.8	EDS
L-test for twinning ²	$\langle L \rangle = 0.48$, $\langle L^2 \rangle = 0.31$	Xtrriage
Estimated twinning fraction	0.056 for -h,-k,l	Xtrriage
F_o, F_c correlation	0.94	EDS
Total number of atoms	533	wwPDB-VP
Average B, all atoms (Å ²)	39.0	wwPDB-VP

Xtrriage's analysis on translational NCS is as follows: *The largest off-origin peak in the Patterson function is 13.16% of the height of the origin peak. No significant pseudotranslation is detected.*

¹Intensities estimated from amplitudes.

²Theoretical values of $\langle |L| \rangle$, $\langle L^2 \rangle$ for acentric reflections are 0.5, 0.333 respectively for untwinned datasets, and 0.375, 0.2 for perfectly twinned datasets.

5 Model quality [i](#)

5.1 Standard geometry [i](#)

Bond lengths and bond angles in the following residue types are not validated in this section: K, ODX

The Z score for a bond length (or angle) is the number of standard deviations the observed value is removed from the expected value. A bond length (or angle) with $|Z| > 5$ is considered an outlier worth inspection. RMSZ is the root-mean-square of all Z scores of the bond lengths (or angles).

Mol	Chain	Bond lengths		Bond angles	
		RMSZ	# Z >5	RMSZ	# Z >5
1	A	0.54	0/500	1.07	7/775 (0.9%)

There are no bond length outliers.

All (7) bond angle outliers are listed below:

Mol	Chain	Res	Type	Atoms	Z	Observed(°)	Ideal(°)
1	A	10	DT	P-O3'-C3'	10.50	132.30	119.70
1	A	17	DT	P-O3'-C3'	8.46	129.85	119.70
1	A	8	DG	P-O3'-C3'	6.36	127.33	119.70
1	A	18	DA	P-O3'-C3'	6.07	126.99	119.70
1	A	11	DT	O3'-P-O5'	-5.62	93.32	104.00
1	A	12	DA	C1'-O4'-C4'	-5.47	104.63	110.10
1	A	20	DG	P-O3'-C3'	5.15	125.88	119.70

There are no chirality outliers.

There are no planarity outliers.

5.2 Too-close contacts [i](#)

In the following table, the Non-H and H(model) columns list the number of non-hydrogen atoms and hydrogen atoms in the chain respectively. The H(added) column lists the number of hydrogen atoms added and optimized by MolProbity. The Clashes column lists the number of clashes within the asymmetric unit, whereas Symm-Clashes lists symmetry-related clashes.

Mol	Chain	Non-H	H(model)	H(added)	Clashes	Symm-Clashes
1	A	444	0	239	10	0
2	A	3	0	0	0	0
3	A	60	0	66	6	0
4	A	26	0	0	0	0

Continued on next page...

Continued from previous page...

Mol	Chain	Non-H	H(model)	H(added)	Clashes	Symm-Clashes
All	All	533	0	305	15	0

The all-atom clashscore is defined as the number of clashes found per 1000 atoms (including hydrogen atoms). The all-atom clashscore for this structure is 18.

All (15) close contacts within the same asymmetric unit are listed below, sorted by their clash magnitude.

Atom-1	Atom-2	Interatomic distance (Å)	Clash overlap (Å)
1:A:17:DT:H1'	1:A:18:DA:H5'	1.60	0.81
1:A:15:DG:N1	3:A:104:0DX:HBLA	2.11	0.65
1:A:14:DG:H2''	1:A:15:DG:H5'	1.82	0.62
1:A:10:DT:H4'	1:A:11:DT:H5''	1.82	0.61
1:A:18:DA:N3	1:A:18:DA:H2'	2.23	0.54
1:A:2:DG:H2'	1:A:3:DG:C8	2.42	0.54
1:A:14:DG:H2'	1:A:15:DG:C8	2.47	0.48
3:A:104:0DX:CBG	3:A:104:0DX:HBKA	2.44	0.48
1:A:1:DG:H8	1:A:1:DG:H5''	1.78	0.48
3:A:104:0DX:HAO	3:A:104:0DX:HAJ	1.72	0.46
1:A:1:DG:H5''	1:A:1:DG:C8	2.52	0.44
3:A:104:0DX:OAE	3:A:104:0DX:HASA	2.17	0.44
3:A:104:0DX:OAG	3:A:104:0DX:NBM	2.48	0.43
3:A:104:0DX:HBKA	3:A:104:0DX:HBG	2.01	0.41
1:A:17:DT:H1'	1:A:18:DA:C5'	2.42	0.41

There are no symmetry-related clashes.

5.3 Torsion angles [i](#)

5.3.1 Protein backbone [i](#)

There are no protein molecules in this entry.

5.3.2 Protein sidechains [i](#)

There are no protein molecules in this entry.

5.3.3 RNA [i](#)

There are no RNA molecules in this entry.

5.4 Non-standard residues in protein, DNA, RNA chains [i](#)

There are no non-standard protein/DNA/RNA residues in this entry.

5.5 Carbohydrates [i](#)

There are no monosaccharides in this entry.

5.6 Ligand geometry [i](#)

Of 4 ligands modelled in this entry, 3 are monoatomic - leaving 1 for Mogul analysis.

In the following table, the Counts columns list the number of bonds (or angles) for which Mogul statistics could be retrieved, the number of bonds (or angles) that are observed in the model and the number of bonds (or angles) that are defined in the Chemical Component Dictionary. The Link column lists molecule types, if any, to which the group is linked. The Z score for a bond length (or angle) is the number of standard deviations the observed value is removed from the expected value. A bond length (or angle) with $|Z| > 2$ is considered an outlier worth inspection. RMSZ is the root-mean-square of all Z scores of the bond lengths (or angles).

Mol	Type	Chain	Res	Link	Bond lengths			Bond angles		
					Counts	RMSZ	# Z > 2	Counts	RMSZ	# Z > 2
3	ODX	A	104	-	67,67,67	1.47	8 (11%)	92,94,94	1.55	15 (16%)

In the following table, the Chirals column lists the number of chiral outliers, the number of chiral centers analysed, the number of these observed in the model and the number defined in the Chemical Component Dictionary. Similar counts are reported in the Torsion and Rings columns. '-' means no outliers of that kind were identified.

Mol	Type	Chain	Res	Link	Chirals	Torsions	Rings
3	ODX	A	104	-	-	10/26/62/62	0/8/8/8

All (8) bond length outliers are listed below:

Mol	Chain	Res	Type	Atoms	Z	Observed(Å)	Ideal(Å)
3	A	104	ODX	CBV-CBR	-5.00	1.36	1.48
3	A	104	ODX	CBX-CBT	-4.18	1.39	1.48
3	A	104	ODX	CBW-CBS	-4.08	1.39	1.48
3	A	104	ODX	CBR-NCJ	-3.52	1.33	1.40
3	A	104	ODX	CBU-CBQ	-3.50	1.40	1.48
3	A	104	ODX	CBT-NCJ	-3.13	1.34	1.40
3	A	104	ODX	CBS-NCI	-2.60	1.35	1.40
3	A	104	ODX	CBX-CBZ	-2.08	1.38	1.43

All (15) bond angle outliers are listed below:

Mol	Chain	Res	Type	Atoms	Z	Observed(°)	Ideal(°)
3	A	104	0DX	CBK-NCI-CBQ	4.43	123.87	117.58
3	A	104	0DX	CAV-NCA-CAU	4.06	115.20	109.52
3	A	104	0DX	CBV-CBR-NCJ	3.98	121.78	117.03
3	A	104	0DX	CBT-NCJ-CBR	-3.88	120.18	124.75
3	A	104	0DX	CBW-CBS-NCI	3.50	121.55	117.33
3	A	104	0DX	CBX-CBP-NBN	-3.30	116.92	121.23
3	A	104	0DX	CBS-NCI-CBQ	-3.12	121.07	124.75
3	A	104	0DX	CBX-CBT-NCJ	2.93	120.86	117.33
3	A	104	0DX	CAQ-NCE-CBD	2.82	118.45	111.23
3	A	104	0DX	OAE-CBQ-CBU	-2.49	118.37	122.66
3	A	104	0DX	OAF-CBR-CBV	-2.32	118.67	122.66
3	A	104	0DX	CBC-CAU-NCA	2.11	113.19	110.80
3	A	104	0DX	OCD-CBA-CBI	-2.03	107.32	111.80
3	A	104	0DX	OAG-CBS-CBW	-2.03	119.61	122.69
3	A	104	0DX	CBD-CAV-NCA	2.01	113.07	110.80

There are no chirality outliers.

All (10) torsion outliers are listed below:

Mol	Chain	Res	Type	Atoms
3	A	104	0DX	CAK-CAQ-NCE-CBD
3	A	104	0DX	CAN-CBL-NCJ-CBR
3	A	104	0DX	CAT-CAN-CBL-NCJ
3	A	104	0DX	CAO-CAK-CAQ-NCE
3	A	104	0DX	CAN-CBL-NCJ-CBT
3	A	104	0DX	CAK-CAQ-NCE-CBC
3	A	104	0DX	CAS-CAM-CBK-NCI
3	A	104	0DX	CAK-CAO-NBM-CBO
3	A	104	0DX	CAM-CBK-NCI-CBS
3	A	104	0DX	CAM-CBK-NCI-CBQ

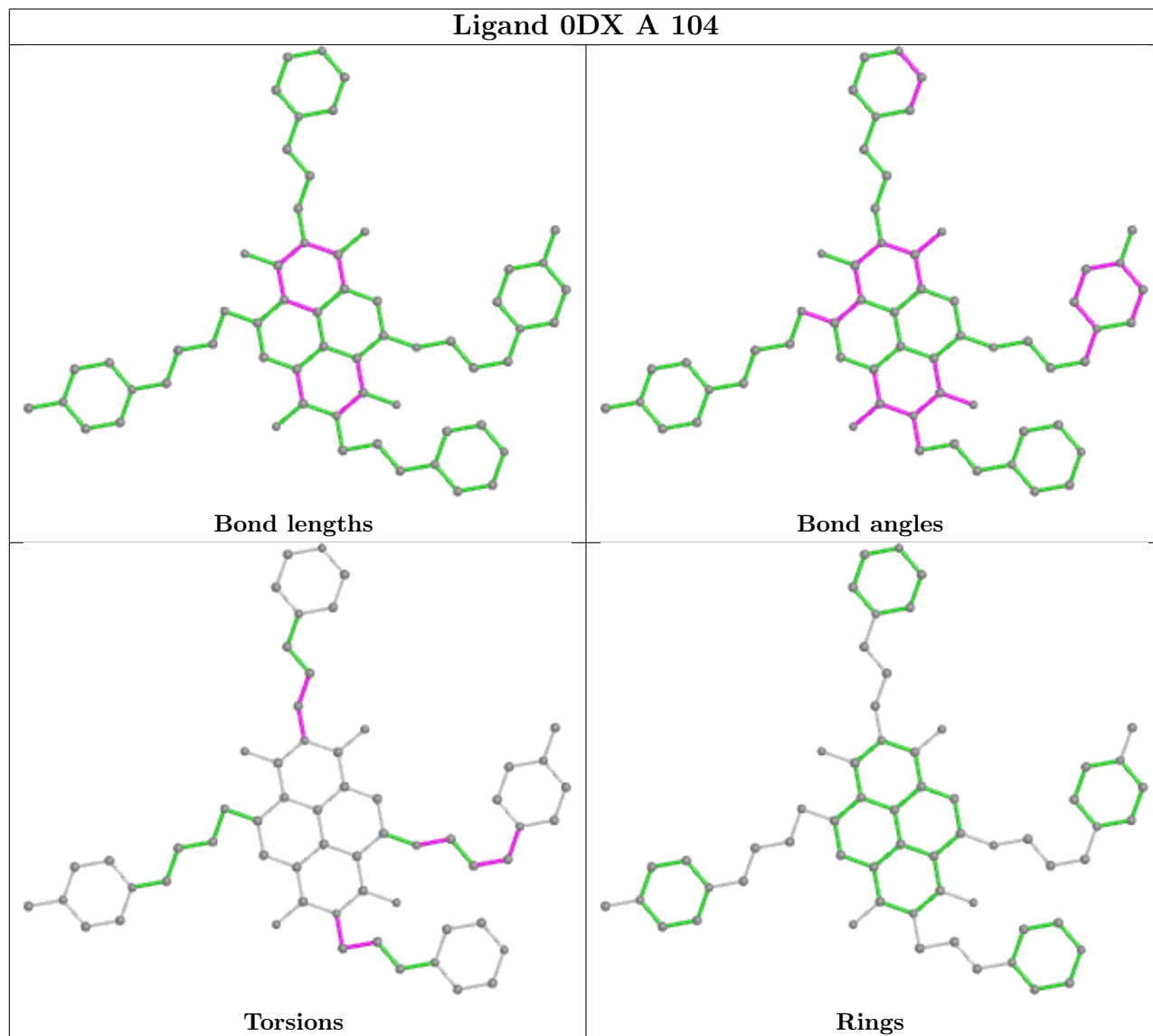
There are no ring outliers.

1 monomer is involved in 6 short contacts:

Mol	Chain	Res	Type	Clashes	Symm-Clashes
3	A	104	0DX	6	0

The following is a two-dimensional graphical depiction of Mogul quality analysis of bond lengths, bond angles, torsion angles, and ring geometry for all instances of the Ligand of Interest. In addition, ligands with molecular weight > 250 and outliers as shown on the validation Tables will also be included. For torsion angles, if less than 5% of the Mogul distribution of torsion angles is

within 10 degrees of the torsion angle in question, then that torsion angle is considered an outlier. Any bond that is central to one or more torsion angles identified as an outlier by Mogul will be highlighted in the graph. For rings, the root-mean-square deviation (RMSD) between the ring in question and similar rings identified by Mogul is calculated over all ring torsion angles. If the average RMSD is greater than 60 degrees and the minimal RMSD between the ring in question and any Mogul-identified rings is also greater than 60 degrees, then that ring is considered an outlier. The outliers are highlighted in purple. The color gray indicates Mogul did not find sufficient equivalents in the CSD to analyse the geometry.



5.7 Other polymers [i](#)

There are no such residues in this entry.

5.8 Polymer linkage issues

There are no chain breaks in this entry.

6 Fit of model and data [i](#)

6.1 Protein, DNA and RNA chains [i](#)

In the following table, the column labelled ‘#RSRZ> 2’ contains the number (and percentage) of RSRZ outliers, followed by percent RSRZ outliers for the chain as percentile scores relative to all X-ray entries and entries of similar resolution. The OWAB column contains the minimum, median, 95th percentile and maximum values of the occupancy-weighted average B-factor per residue. The column labelled ‘Q< 0.9’ lists the number of (and percentage) of residues with an average occupancy less than 0.9.

Mol	Chain	Analysed	<RSRZ>	#RSRZ>2	OWAB(Å ²)	Q<0.9
1	A	21/21 (100%)	0.13	2 (9%) 8 7	26, 34, 78, 83	1 (4%)

All (2) RSRZ outliers are listed below:

Mol	Chain	Res	Type	RSRZ
1	A	18	DA	3.4
1	A	17	DT	2.3

6.2 Non-standard residues in protein, DNA, RNA chains [i](#)

There are no non-standard protein/DNA/RNA residues in this entry.

6.3 Carbohydrates [i](#)

There are no monosaccharides in this entry.

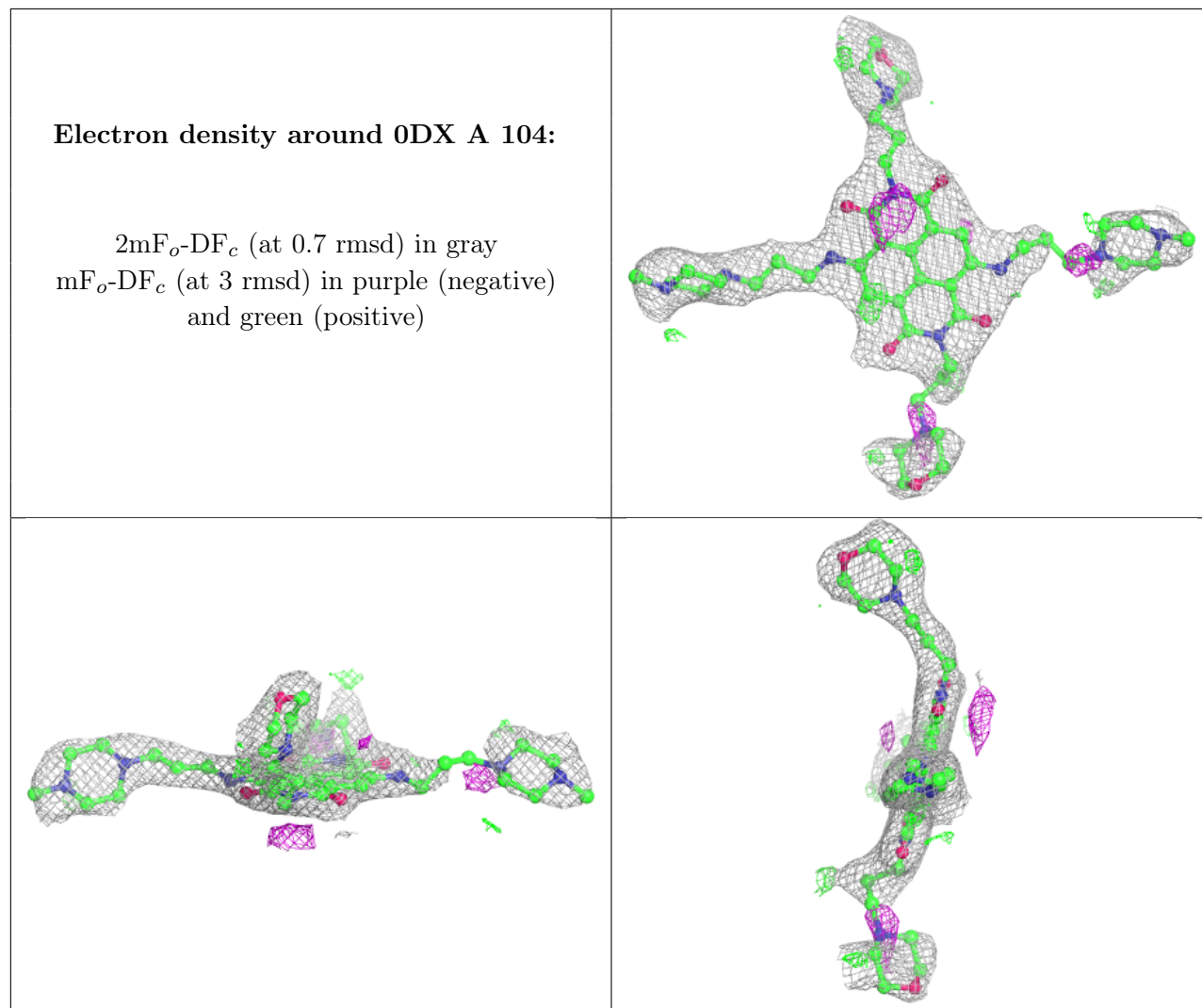
6.4 Ligands [i](#)

In the following table, the Atoms column lists the number of modelled atoms in the group and the number defined in the chemical component dictionary. The B-factors column lists the minimum, median, 95th percentile and maximum values of B factors of atoms in the group. The column labelled ‘Q< 0.9’ lists the number of atoms with occupancy less than 0.9.

Mol	Type	Chain	Res	Atoms	RSCC	RSR	B-factors(Å ²)	Q<0.9
3	ODX	A	104	60/60	0.80	0.24	25,34,55,61	0
2	K	A	103	1/1	0.96	0.22	19,19,19,19	1
2	K	A	102	1/1	0.97	0.24	26,26,26,26	0
2	K	A	101	1/1	0.98	0.18	29,29,29,29	0

The following is a graphical depiction of the model fit to experimental electron density of all

instances of the Ligand of Interest. In addition, ligands with molecular weight > 250 and outliers as shown on the geometry validation Tables will also be included. Each fit is shown from different orientation to approximate a three-dimensional view.



6.5 Other polymers [\(i\)](#)

There are no such residues in this entry.