



Full wwPDB X-ray Structure Validation Report ⓘ

Sep 26, 2023 – 06:08 PM EDT

PDB ID : 6DA8
Title : Human CYP3A4 bound to an inhibitor
Authors : Sevrioukova, I.F.
Deposited on : 2018-05-01
Resolution : 2.80 Å(reported)

This is a Full wwPDB X-ray Structure Validation Report for a publicly released PDB entry.

We welcome your comments at validation@mail.wwpdb.org

A user guide is available at

<https://www.wwpdb.org/validation/2017/XrayValidationReportHelp>

with specific help available everywhere you see the ⓘ symbol.

The types of validation reports are described at

<http://www.wwpdb.org/validation/2017/FAQs#types>.

The following versions of software and data (see [references ⓘ](#)) were used in the production of this report:

MolProbity : 4.02b-467
Mogul : 1.8.5 (274361), CSD as541be (2020)
Xtriage (Phenix) : 1.13
EDS : 2.35.1
buster-report : 1.1.7 (2018)
Percentile statistics : 20191225.v01 (using entries in the PDB archive December 25th 2019)
Refmac : 5.8.0158
CCP4 : 7.0.044 (Gargrove)
Ideal geometry (proteins) : Engh & Huber (2001)
Ideal geometry (DNA, RNA) : Parkinson et al. (1996)
Validation Pipeline (wwPDB-VP) : 2.35.1

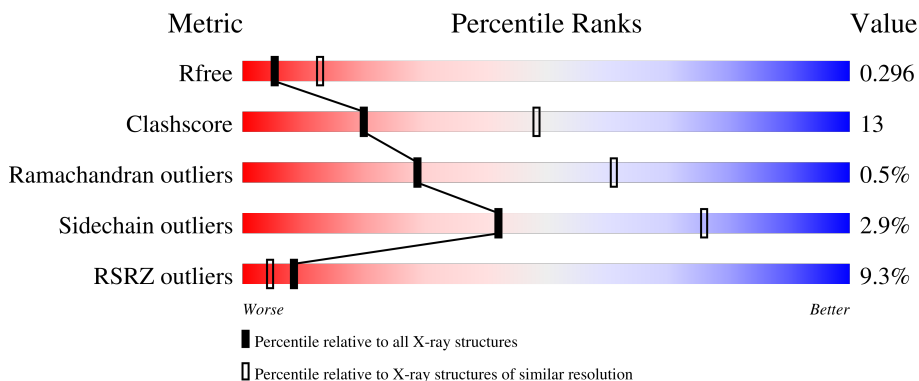
1 Overall quality at a glance

The following experimental techniques were used to determine the structure:

X-RAY DIFFRACTION

The reported resolution of this entry is 2.80 Å.

Percentile scores (ranging between 0-100) for global validation metrics of the entry are shown in the following graphic. The table shows the number of entries on which the scores are based.



Metric	Whole archive (#Entries)	Similar resolution (#Entries, resolution range(Å))
R_{free}	130704	3140 (2.80-2.80)
Clashscore	141614	3569 (2.80-2.80)
Ramachandran outliers	138981	3498 (2.80-2.80)
Sidechain outliers	138945	3500 (2.80-2.80)
RSRZ outliers	127900	3078 (2.80-2.80)

The table below summarises the geometric issues observed across the polymeric chains and their fit to the electron density. The red, orange, yellow and green segments of the lower bar indicate the fraction of residues that contain outliers for ≥ 3 , 2, 1 and 0 types of geometric quality criteria respectively. A grey segment represents the fraction of residues that are not modelled. The numeric value for each fraction is indicated below the corresponding segment, with a dot representing fractions $\leq 5\%$. The upper red bar (where present) indicates the fraction of residues that have poor fit to the electron density. The numeric value is given above the bar.

Mol	Chain	Length	Quality of chain
1	A	487	

2 Entry composition [i](#)

There are 3 unique types of molecules in this entry. The entry contains 3723 atoms, of which 0 are hydrogens and 0 are deuteriums.

In the tables below, the ZeroOcc column contains the number of atoms modelled with zero occupancy, the AltConf column contains the number of residues with at least one atom in alternate conformation and the Trace column contains the number of residues modelled with at most 2 atoms.

- Molecule 1 is a protein called Cytochrome P450 3A4.

Mol	Chain	Residues	Atoms					ZeroOcc	AltConf	Trace
			Total	C	N	O	S			
1	A	451	3644	2376	596	646	26	0	6	0

There are 6 discrepancies between the modelled and reference sequences:

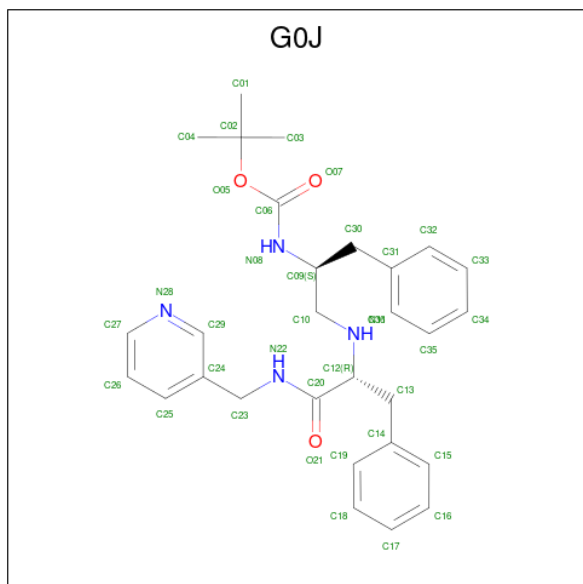
Chain	Residue	Modelled	Actual	Comment	Reference
A	1	MET	-	initiating methionine	UNP P08684
A	2	ALA	-	expression tag	UNP P08684
A	504	HIS	-	expression tag	UNP P08684
A	505	HIS	-	expression tag	UNP P08684
A	506	HIS	-	expression tag	UNP P08684
A	507	HIS	-	expression tag	UNP P08684

- Molecule 2 is PROTOPORPHYRIN IX CONTAINING FE (three-letter code: HEM) (formula: $C_{34}H_{32}FeN_4O_4$).



Mol	Chain	Residues	Atoms				ZeroOcc	AltConf	
			Total	C	Fe	N			O
2	A	1	43	34	1	4	4	0	0

- Molecule 3 is Nalpha-{(2S)-2-[(tert-butoxycarbonyl)amino]-3-phenylpropyl}-N-[(pyridin-3-yl)methyl]-D-phenylalaninamide (three-letter code: G0J) (formula: C₂₉H₃₆N₄O₃).



Mol	Chain	Residues	Atoms				ZeroOcc	AltConf
			Total	C	N	O		
3	A	1	36	29	4	3	0	0

3 Residue-property plots [i](#)

These plots are drawn for all protein, RNA, DNA and oligosaccharide chains in the entry. The first graphic for a chain summarises the proportions of the various outlier classes displayed in the second graphic. The second graphic shows the sequence view annotated by issues in geometry and electron density. Residues are color-coded according to the number of geometric quality criteria for which they contain at least one outlier: green = 0, yellow = 1, orange = 2 and red = 3 or more. A red dot above a residue indicates a poor fit to the electron density ($RSRZ > 2$). Stretches of 2 or more consecutive residues without any outlier are shown as a green connector. Residues present in the sample, but not in the model, are shown in grey.

- Molecule 1: Cytochrome P450 3A4



4 Data and refinement statistics

Property	Value	Source
Space group	I 2 2 2	Depositor
Cell constants a, b, c, α , β , γ	76.25Å 101.68Å 126.24Å 90.00° 90.00° 90.00°	Depositor
Resolution (Å)	65.27 – 2.80 65.27 – 2.80	Depositor EDS
% Data completeness (in resolution range)	85.2 (65.27-2.80) 85.3 (65.27-2.80)	Depositor EDS
R_{merge}	0.15	Depositor
R_{sym}	(Not available)	Depositor
$\langle I/\sigma(I) \rangle$ ¹	0.95 (at 2.81Å)	Xtrriage
Refinement program	PHENIX (1.11.1_2575)	Depositor
R, R_{free}	0.216 , 0.291 0.218 , 0.296	Depositor DCC
R_{free} test set	540 reflections (5.11%)	wwPDB-VP
Wilson B-factor (Å ²)	98.6	Xtrriage
Anisotropy	0.313	Xtrriage
Bulk solvent k_{sol} (e/Å ³), B_{sol} (Å ²)	0.29 , 78.2	EDS
L-test for twinning ²	$\langle L \rangle = 0.51$, $\langle L^2 \rangle = 0.35$	Xtrriage
Estimated twinning fraction	No twinning to report.	Xtrriage
F_o, F_c correlation	0.94	EDS
Total number of atoms	3723	wwPDB-VP
Average B, all atoms (Å ²)	118.0	wwPDB-VP

Xtrriage's analysis on translational NCS is as follows: *The largest off-origin peak in the Patterson function is 4.70% of the height of the origin peak. No significant pseudotranslation is detected.*

¹Intensities estimated from amplitudes.

²Theoretical values of $\langle |L| \rangle$, $\langle L^2 \rangle$ for acentric reflections are 0.5, 0.333 respectively for untwinned datasets, and 0.375, 0.2 for perfectly twinned datasets.

5 Model quality [i](#)

5.1 Standard geometry [i](#)

Bond lengths and bond angles in the following residue types are not validated in this section: HEM, G0J

The Z score for a bond length (or angle) is the number of standard deviations the observed value is removed from the expected value. A bond length (or angle) with $|Z| > 5$ is considered an outlier worth inspection. RMSZ is the root-mean-square of all Z scores of the bond lengths (or angles).

Mol	Chain	Bond lengths		Bond angles	
		RMSZ	# Z >5	RMSZ	# Z >5
1	A	0.52	0/3749	0.66	0/5068

Chiral center outliers are detected by calculating the chiral volume of a chiral center and verifying if the center is modelled as a planar moiety or with the opposite hand. A planarity outlier is detected by checking planarity of atoms in a peptide group, atoms in a mainchain group or atoms of a sidechain that are expected to be planar.

Mol	Chain	#Chirality outliers	#Planarity outliers
1	A	0	1

There are no bond length outliers.

There are no bond angle outliers.

There are no chirality outliers.

All (1) planarity outliers are listed below:

Mol	Chain	Res	Type	Group
1	A	198	ASN	Peptide

5.2 Too-close contacts [i](#)

In the following table, the Non-H and H(model) columns list the number of non-hydrogen atoms and hydrogen atoms in the chain respectively. The H(added) column lists the number of hydrogen atoms added and optimized by MolProbity. The Clashes column lists the number of clashes within the asymmetric unit, whereas Symm-Clashes lists symmetry-related clashes.

Mol	Chain	Non-H	H(model)	H(added)	Clashes	Symm-Clashes
1	A	3644	0	3758	92	0
2	A	43	0	30	6	0

Continued on next page...

Continued from previous page...

Mol	Chain	Non-H	H(model)	H(added)	Clashes	Symm-Clashes
3	A	36	0	0	1	0
All	All	3723	0	3788	94	0

The all-atom clashscore is defined as the number of clashes found per 1000 atoms (including hydrogen atoms). The all-atom clashscore for this structure is 13.

All (94) close contacts within the same asymmetric unit are listed below, sorted by their clash magnitude.

Atom-1	Atom-2	Interatomic distance (Å)	Clash overlap (Å)
1:A:189:PHE:HE2	1:A:303:ILE:HD11	1.49	0.75
1:A:239:CYS:HB3	1:A:241:PHE:O	1.88	0.73
1:A:166:THR:O	1:A:168:LYS:N	2.21	0.72
1:A:421:LYS:HA	1:A:424:LYS:HG2	1.71	0.71
1:A:279:GLN:NE2	1:A:290:LEU:O	2.25	0.70
1:A:226:PHE:HA	1:A:228:PHE:CE2	2.29	0.66
1:A:101:VAL:O	1:A:378:LYS:HG2	1.96	0.66
1:A:435:PHE:HB3	1:A:442:CYS:HB3	1.80	0.63
1:A:428:ASP:HB3	1:A:431:ILE:HG12	1.81	0.62
1:A:184:ILE:HD11	1:A:306:GLY:C	2.20	0.62
1:A:58:CYS:SG	1:A:371:MET:HG2	2.40	0.62
1:A:113:PHE:HB2	1:A:293:LEU:HD21	1.84	0.60
1:A:291:SER:OG	1:A:292:ASP:N	2.32	0.59
1:A:292:ASP:O	1:A:296:VAL:HG23	2.03	0.59
1:A:470:GLU:N	1:A:470:GLU:OE1	2.35	0.59
1:A:54:HIS:NE2	1:A:55:LYS:HG3	2.17	0.59
1:A:188:SER:HA	1:A:271:PHE:HB2	1.87	0.57
1:A:194:ASP:HB3	1:A:198:ASN:OD1	2.05	0.56
1:A:152:TYR:CD1	1:A:182:ASP:HB3	2.41	0.56
1:A:153:GLY:O	1:A:157:VAL:HG23	2.05	0.56
1:A:189:PHE:HZ	1:A:299:SER:HB3	1.70	0.55
1:A:442:CYS:HB2	2:A:601:HEM:NA	2.21	0.55
1:A:46:PHE:O	1:A:225:VAL:HG13	2.07	0.55
1:A:117:ALA:HB1	1:A:301:ILE:HG13	1.90	0.54
1:A:189:PHE:CZ	1:A:299:SER:HB3	2.43	0.53
1:A:87:PRO:HG3	1:A:431:ILE:HD11	1.91	0.53
1:A:201:ASP:O	1:A:203:PHE:N	2.42	0.53
1:A:248:PHE:HA	1:A:251:LYS:HE3	1.91	0.52
1:A:101:VAL:HG21	1:A:381[A]:VAL:HG11	1.91	0.52
1:A:114:MET:HG3	1:A:241:PHE:CZ	2.45	0.52
1:A:27:THR:HA	1:A:29:SER:H	1.76	0.51
1:A:257:LYS:NZ	1:A:292:ASP:OD1	2.40	0.51

Continued on next page...

Continued from previous page...

Atom-1	Atom-2	Interatomic distance (Å)	Clash overlap (Å)
1:A:365:ARG:O	1:A:402:HIS:HB3	2.11	0.51
1:A:442:CYS:HB2	2:A:601:HEM:C4A	2.45	0.51
1:A:249:LEU:HA	1:A:252:SER:HB2	1.93	0.50
2:A:601:HEM:HBB2	2:A:601:HEM:HMB2	1.94	0.50
1:A:169:PRO:HG3	1:A:468:CYS:SG	2.52	0.49
1:A:54:HIS:CE1	1:A:55:LYS:HG3	2.48	0.49
1:A:101:VAL:HG11	1:A:381[A]:VAL:HG21	1.95	0.49
1:A:294:GLU:O	1:A:298:GLN:HG2	2.12	0.49
1:A:305:ALA:HB1	2:A:601:HEM:C3C	2.48	0.49
1:A:189:PHE:CE2	1:A:303:ILE:HD11	2.39	0.47
1:A:235:VAL:HG13	1:A:236:LEU:HD23	1.95	0.47
1:A:327:VAL:HG13	1:A:355:TYR:OH	2.15	0.47
1:A:105:ARG:NH2	2:A:601:HEM:HAA1	2.31	0.46
1:A:254:LYS:HA	1:A:257:LYS:HB3	1.96	0.46
1:A:194:ASP:HB3	1:A:198:ASN:HB2	1.97	0.46
1:A:114:MET:HG3	1:A:241:PHE:CE1	2.51	0.46
1:A:232:ILE:HG22	1:A:233:LEU:HD23	1.98	0.45
1:A:48:GLY:HA3	1:A:75:TYR:O	2.16	0.45
1:A:316:PHE:O	1:A:320:GLU:HG2	2.16	0.45
1:A:209:LYS:H	1:A:209:LYS:HG3	1.60	0.45
1:A:330:LYS:HD3	1:A:355:TYR:CZ	2.51	0.45
1:A:301:ILE:HD13	1:A:301:ILE:HA	1.65	0.45
1:A:92:THR:OG1	1:A:384:ASN:ND2	2.48	0.44
1:A:305:ALA:O	1:A:309:THR:OG1	2.21	0.44
1:A:138:THR:OG1	1:A:141:LYS:HG2	2.18	0.44
1:A:183:VAL:O	1:A:187:THR:HG23	2.17	0.44
1:A:32:LEU:HD11	1:A:389:PRO:HG2	1.99	0.44
1:A:101:VAL:HG11	1:A:381[B]:VAL:HG21	2.00	0.44
1:A:346:THR:O	1:A:350:VAL:HG23	2.18	0.44
1:A:370:ALA:O	1:A:372:ARG:N	2.39	0.44
1:A:307:TYR:O	1:A:311:SER:HB3	2.17	0.44
1:A:89:MET:HE2	1:A:384:ASN:HB2	2.01	0.43
1:A:251:LYS:HA	1:A:254:LYS:HG2	2.00	0.43
1:A:57:PHE:HE1	1:A:481:GLY:HA2	1.82	0.43
1:A:113:PHE:CZ	1:A:246:THR:HB	2.54	0.43
1:A:117:ALA:HA	1:A:298:GLN:HE22	1.84	0.43
1:A:113:PHE:CE2	1:A:246:THR:HB	2.53	0.43
1:A:125:GLU:N	1:A:125:GLU:OE1	2.52	0.43
1:A:74:PHE:N	1:A:74:PHE:CD2	2.87	0.43
1:A:117:ALA:HB1	1:A:301:ILE:CG1	2.48	0.43
1:A:135:PRO:HA	1:A:138:THR:HG23	2.00	0.43

Continued on next page...

Continued from previous page...

Atom-1	Atom-2	Interatomic distance (Å)	Clash overlap (Å)
1:A:226:PHE:HB3	1:A:229:LEU:HG	2.01	0.43
1:A:316:PHE:HB3	1:A:367:PHE:CD1	2.54	0.42
1:A:57:PHE:HB2	1:A:371:MET:HE2	2.00	0.42
1:A:79:GLN:HA	1:A:80:PRO:HD3	1.86	0.42
1:A:89:MET:HG3	1:A:383:ILE:HD12	2.00	0.42
1:A:156:LEU:CD1	1:A:175:VAL:HG22	2.48	0.42
1:A:110:PRO:HG3	1:A:233:LEU:HB3	2.02	0.42
1:A:322:ALA:HB2	1:A:491:LEU:HD13	2.02	0.42
1:A:110:PRO:O	1:A:240:VAL:HG22	2.20	0.42
2:A:601:HEM:ND	3:A:602:G0J:C29	2.83	0.42
1:A:126:TRP:CZ2	1:A:440:ARG:HD2	2.54	0.42
1:A:483:LEU:HD12	1:A:483:LEU:HA	1.86	0.41
1:A:223:ILE:HD13	1:A:223:ILE:HA	1.79	0.41
1:A:28:HIS:HE2	1:A:45:PRO:HB3	1.86	0.41
1:A:229:LEU:HD22	1:A:232:ILE:HD12	2.02	0.41
1:A:45:PRO:O	1:A:46:PHE:HB2	2.21	0.41
1:A:184:ILE:CG2	1:A:303:ILE:HG12	2.50	0.41
1:A:381[B]:VAL:HG12	1:A:382:GLU:N	2.36	0.41
1:A:39:PRO:HB2	1:A:68:TYR:CD2	2.56	0.41
1:A:58:CYS:HB3	1:A:399:TYR:CE2	2.55	0.41
1:A:435:PHE:O	1:A:441:ASN:HB2	2.21	0.40

There are no symmetry-related clashes.

5.3 Torsion angles [i](#)

5.3.1 Protein backbone [i](#)

In the following table, the Percentiles column shows the percent Ramachandran outliers of the chain as a percentile score with respect to all X-ray entries followed by that with respect to entries of similar resolution.

The Analysed column shows the number of residues for which the backbone conformation was analysed, and the total number of residues.

Mol	Chain	Analysed	Favoured	Allowed	Outliers	Percentiles
1	A	449/487 (92%)	416 (93%)	31 (7%)	2 (0%)	34 66

All (2) Ramachandran outliers are listed below:

Mol	Chain	Res	Type
1	A	167	GLY
1	A	199	PRO

5.3.2 Protein sidechains [i](#)

In the following table, the Percentiles column shows the percent sidechain outliers of the chain as a percentile score with respect to all X-ray entries followed by that with respect to entries of similar resolution.

The Analysed column shows the number of residues for which the sidechain conformation was analysed, and the total number of residues.

Mol	Chain	Analysed	Rotameric	Outliers	Percentiles
1	A	418/443 (94%)	406 (97%)	12 (3%)	42 76

All (12) residues with a non-rotameric sidechain are listed below:

Mol	Chain	Res	Type
1	A	27	THR
1	A	28	HIS
1	A	65	HIS
1	A	197	ASN
1	A	209	LYS
1	A	232	ILE
1	A	239	CYS
1	A	311	SER
1	A	349	THR
1	A	398	SER
1	A	437	SER
1	A	440	ARG

Sometimes sidechains can be flipped to improve hydrogen bonding and reduce clashes. All (1) such sidechains are listed below:

Mol	Chain	Res	Type
1	A	384	ASN

5.3.3 RNA [i](#)

There are no RNA molecules in this entry.

5.4 Non-standard residues in protein, DNA, RNA chains [i](#)

There are no non-standard protein/DNA/RNA residues in this entry.

5.5 Carbohydrates [i](#)

There are no monosaccharides in this entry.

5.6 Ligand geometry [i](#)

2 ligands are modelled in this entry.

In the following table, the Counts columns list the number of bonds (or angles) for which Mogul statistics could be retrieved, the number of bonds (or angles) that are observed in the model and the number of bonds (or angles) that are defined in the Chemical Component Dictionary. The Link column lists molecule types, if any, to which the group is linked. The Z score for a bond length (or angle) is the number of standard deviations the observed value is removed from the expected value. A bond length (or angle) with $|Z| > 2$ is considered an outlier worth inspection. RMSZ is the root-mean-square of all Z scores of the bond lengths (or angles).

Mol	Type	Chain	Res	Link	Bond lengths			Bond angles		
					Counts	RMSZ	# Z > 2	Counts	RMSZ	# Z > 2
3	G0J	A	602	2	38,38,38	2.41	11 (28%)	47,50,50	1.69	11 (23%)
2	HEM	A	601	1,3	41,50,50	1.67	4 (9%)	45,82,82	1.80	17 (37%)

In the following table, the Chirals column lists the number of chiral outliers, the number of chiral centers analysed, the number of these observed in the model and the number defined in the Chemical Component Dictionary. Similar counts are reported in the Torsion and Rings columns. '-' means no outliers of that kind were identified.

Mol	Type	Chain	Res	Link	Chirals	Torsions	Rings
3	G0J	A	602	2	-	18/31/31/31	0/3/3/3
2	HEM	A	601	1,3	-	2/12/54/54	-

All (15) bond length outliers are listed below:

Mol	Chain	Res	Type	Atoms	Z	Observed(Å)	Ideal(Å)
3	A	602	G0J	O05-C06	6.53	1.47	1.34
2	A	601	HEM	C3C-C2C	-6.48	1.31	1.40
3	A	602	G0J	C20-N22	5.76	1.46	1.33
3	A	602	G0J	C06-N08	5.61	1.48	1.34
2	A	601	HEM	FE-ND	3.85	2.15	1.96
3	A	602	G0J	C30-C09	3.68	1.61	1.53

Continued on next page...

Continued from previous page...

Mol	Chain	Res	Type	Atoms	Z	Observed(Å)	Ideal(Å)
3	A	602	G0J	O21-C20	-3.53	1.16	1.23
3	A	602	G0J	C10-C09	3.20	1.65	1.55
3	A	602	G0J	C09-N08	3.19	1.53	1.46
3	A	602	G0J	O05-C02	3.18	1.54	1.48
2	A	601	HEM	C3C-CAC	3.09	1.54	1.47
2	A	601	HEM	CAB-C3B	3.08	1.55	1.47
3	A	602	G0J	C10-N11	2.76	1.54	1.47
3	A	602	G0J	C12-N11	2.47	1.52	1.46
3	A	602	G0J	C12-C20	2.35	1.59	1.52

All (28) bond angle outliers are listed below:

Mol	Chain	Res	Type	Atoms	Z	Observed(°)	Ideal(°)
3	A	602	G0J	O05-C06-N08	5.01	118.44	110.02
2	A	601	HEM	C3B-C2B-C1B	4.46	109.80	106.49
3	A	602	G0J	C24-C23-N22	-3.74	105.03	113.05
3	A	602	G0J	C31-C30-C09	3.57	121.89	113.78
3	A	602	G0J	C27-N28-C29	3.31	122.57	116.85
2	A	601	HEM	CHD-C1D-ND	3.09	127.79	124.43
2	A	601	HEM	CBA-CAA-C2A	-3.01	107.49	112.62
3	A	602	G0J	O05-C06-O07	-3.01	120.14	125.62
2	A	601	HEM	CAA-CBA-CGA	-2.84	105.79	113.76
3	A	602	G0J	C12-C20-N22	-2.75	111.00	116.54
2	A	601	HEM	C4D-ND-C1D	2.73	107.89	105.07
2	A	601	HEM	CHB-C1B-NB	2.70	127.72	124.38
2	A	601	HEM	C4C-CHD-C1D	2.70	126.12	122.56
2	A	601	HEM	CMB-C2B-C1B	-2.65	121.00	125.04
2	A	601	HEM	C2C-C3C-C4C	2.55	108.68	106.90
3	A	602	G0J	O21-C20-C12	2.51	125.73	120.45
3	A	602	G0J	C23-N22-C20	2.50	125.94	122.34
2	A	601	HEM	C1B-NB-C4B	2.48	107.64	105.07
2	A	601	HEM	C3C-C4C-NC	-2.45	106.32	110.94
2	A	601	HEM	C2D-C1D-ND	-2.42	106.98	109.88
3	A	602	G0J	C10-C09-N08	2.40	114.35	109.05
2	A	601	HEM	CHA-C4D-ND	2.37	127.30	124.38
2	A	601	HEM	C4B-C3B-C2B	-2.36	105.24	107.11
3	A	602	G0J	O05-C02-C04	2.33	116.44	107.20
2	A	601	HEM	C1D-C2D-C3D	2.21	109.27	106.96
2	A	601	HEM	C2B-C1B-NB	-2.13	107.32	109.84
3	A	602	G0J	O07-C06-N08	-2.09	121.43	124.85
2	A	601	HEM	CBD-CAD-C3D	-2.06	106.90	112.63

There are no chirality outliers.

All (20) torsion outliers are listed below:

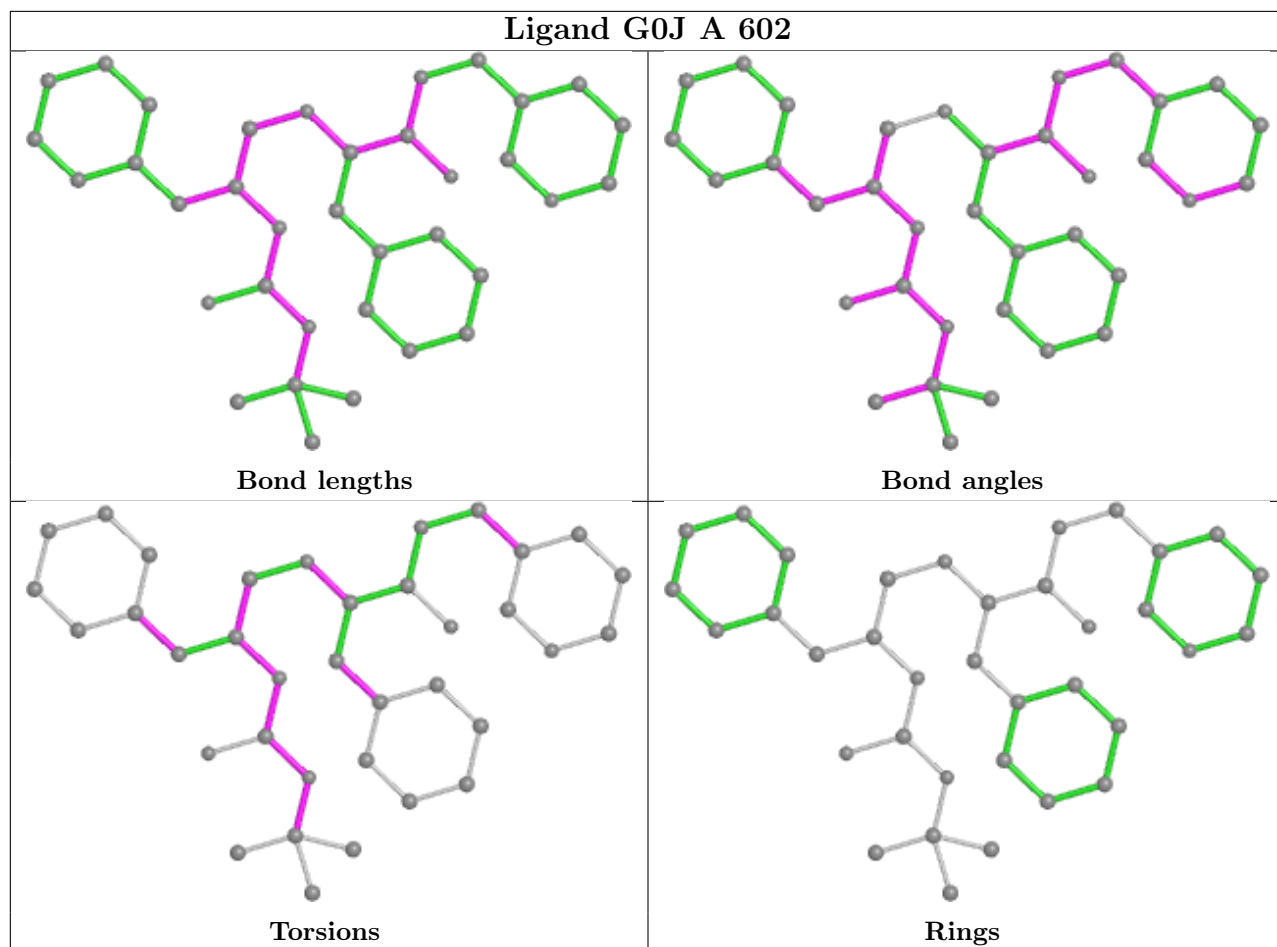
Mol	Chain	Res	Type	Atoms
3	A	602	G0J	O05-C06-N08-C09
3	A	602	G0J	N08-C06-O05-C02
3	A	602	G0J	O07-C06-O05-C02
3	A	602	G0J	C10-C09-N08-C06
3	A	602	G0J	C01-C02-O05-C06
3	A	602	G0J	C03-C02-O05-C06
3	A	602	G0J	C04-C02-O05-C06
3	A	602	G0J	O07-C06-N08-C09
3	A	602	G0J	N08-C09-C10-N11
3	A	602	G0J	C30-C09-C10-N11
3	A	602	G0J	C12-C13-C14-C19
3	A	602	G0J	C12-C13-C14-C15
3	A	602	G0J	C09-C30-C31-C36
3	A	602	G0J	C09-C30-C31-C32
3	A	602	G0J	C13-C12-N11-C10
3	A	602	G0J	C30-C09-N08-C06
3	A	602	G0J	N22-C23-C24-C29
3	A	602	G0J	C20-C12-N11-C10
2	A	601	HEM	CAD-CBD-CGD-O2D
2	A	601	HEM	CAD-CBD-CGD-O1D

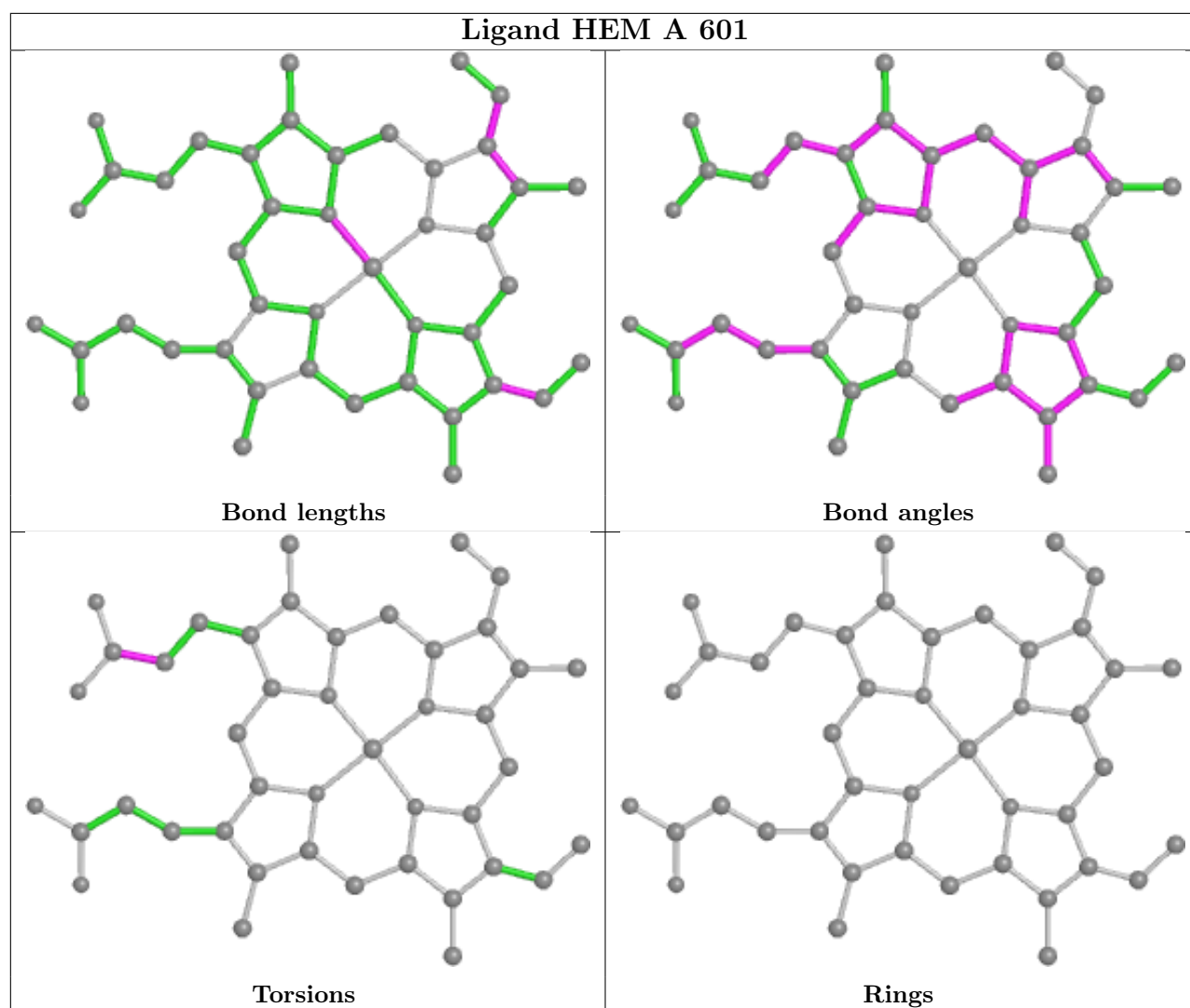
There are no ring outliers.

2 monomers are involved in 6 short contacts:

Mol	Chain	Res	Type	Clashes	Symm-Clashes
3	A	602	G0J	1	0
2	A	601	HEM	6	0

The following is a two-dimensional graphical depiction of Mogul quality analysis of bond lengths, bond angles, torsion angles, and ring geometry for all instances of the Ligand of Interest. In addition, ligands with molecular weight > 250 and outliers as shown on the validation Tables will also be included. For torsion angles, if less than 5% of the Mogul distribution of torsion angles is within 10 degrees of the torsion angle in question, then that torsion angle is considered an outlier. Any bond that is central to one or more torsion angles identified as an outlier by Mogul will be highlighted in the graph. For rings, the root-mean-square deviation (RMSD) between the ring in question and similar rings identified by Mogul is calculated over all ring torsion angles. If the average RMSD is greater than 60 degrees and the minimal RMSD between the ring in question and any Mogul-identified rings is also greater than 60 degrees, then that ring is considered an outlier. The outliers are highlighted in purple. The color gray indicates Mogul did not find sufficient equivalents in the CSD to analyse the geometry.





5.7 Other polymers [i](#)

There are no such residues in this entry.

5.8 Polymer linkage issues [i](#)

There are no chain breaks in this entry.

6 Fit of model and data

6.1 Protein, DNA and RNA chains

In the following table, the column labelled ‘#RSRZ> 2’ contains the number (and percentage) of RSRZ outliers, followed by percent RSRZ outliers for the chain as percentile scores relative to all X-ray entries and entries of similar resolution. The OWAB column contains the minimum, median, 95th percentile and maximum values of the occupancy-weighted average B-factor per residue. The column labelled ‘Q< 0.9’ lists the number of (and percentage) of residues with an average occupancy less than 0.9.

Mol	Chain	Analysed	<RSRZ>	#RSRZ>2	OWAB(Å ²)	Q<0.9
1	A	451/487 (92%)	0.37	42 (9%) 8 4	56, 113, 197, 248	0

All (42) RSRZ outliers are listed below:

Mol	Chain	Res	Type	RSRZ
1	A	341	ASN	7.2
1	A	165	GLU	5.2
1	A	170	VAL	4.3
1	A	269	VAL	4.2
1	A	270	ASP	4.2
1	A	259	SER	3.9
1	A	261	LEU	3.9
1	A	236	LEU	3.9
1	A	239	CYS	3.9
1	A	191	VAL	3.8
1	A	491	LEU	3.8
1	A	255	ARG	3.6
1	A	149	ILE	3.6
1	A	457	ILE	3.5
1	A	209	LYS	3.4
1	A	168	LYS	3.3
1	A	156	LEU	3.2
1	A	222	SER	3.1
1	A	338	VAL	3.0
1	A	154	ASP	2.9
1	A	152	TYR	2.9
1	A	334	GLU	2.8
1	A	254	LYS	2.8
1	A	257	LYS	2.7
1	A	210	LEU	2.7
1	A	175	VAL	2.7
1	A	148	ILE	2.6

Continued on next page...

Continued from previous page...

Mol	Chain	Res	Type	RSRZ
1	A	345	PRO	2.6
1	A	147	PRO	2.6
1	A	203	PHE	2.6
1	A	153	GLY	2.4
1	A	472	GLN	2.3
1	A	145	MET	2.3
1	A	487	LYS	2.2
1	A	406	LYS	2.2
1	A	101	VAL	2.2
1	A	150	ALA	2.1
1	A	279	GLN	2.1
1	A	490	VAL	2.1
1	A	425	ASP	2.1
1	A	219	PHE	2.0
1	A	237	ASN	2.0

6.2 Non-standard residues in protein, DNA, RNA chains [i](#)

There are no non-standard protein/DNA/RNA residues in this entry.

6.3 Carbohydrates [i](#)

There are no monosaccharides in this entry.

6.4 Ligands [i](#)

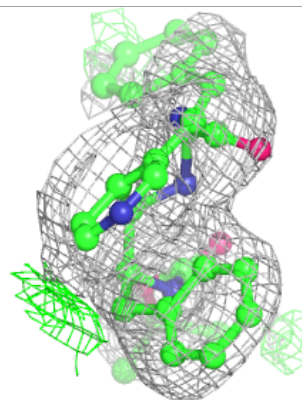
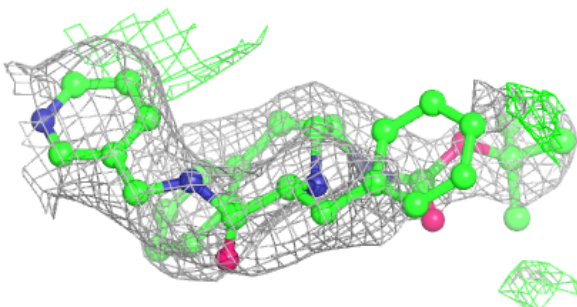
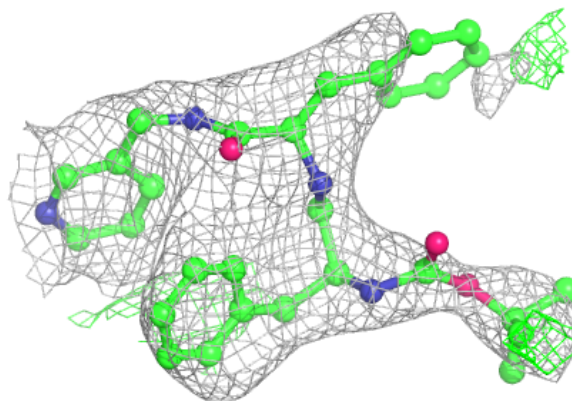
In the following table, the Atoms column lists the number of modelled atoms in the group and the number defined in the chemical component dictionary. The B-factors column lists the minimum, median, 95th percentile and maximum values of B factors of atoms in the group. The column labelled 'Q<0.9' lists the number of atoms with occupancy less than 0.9.

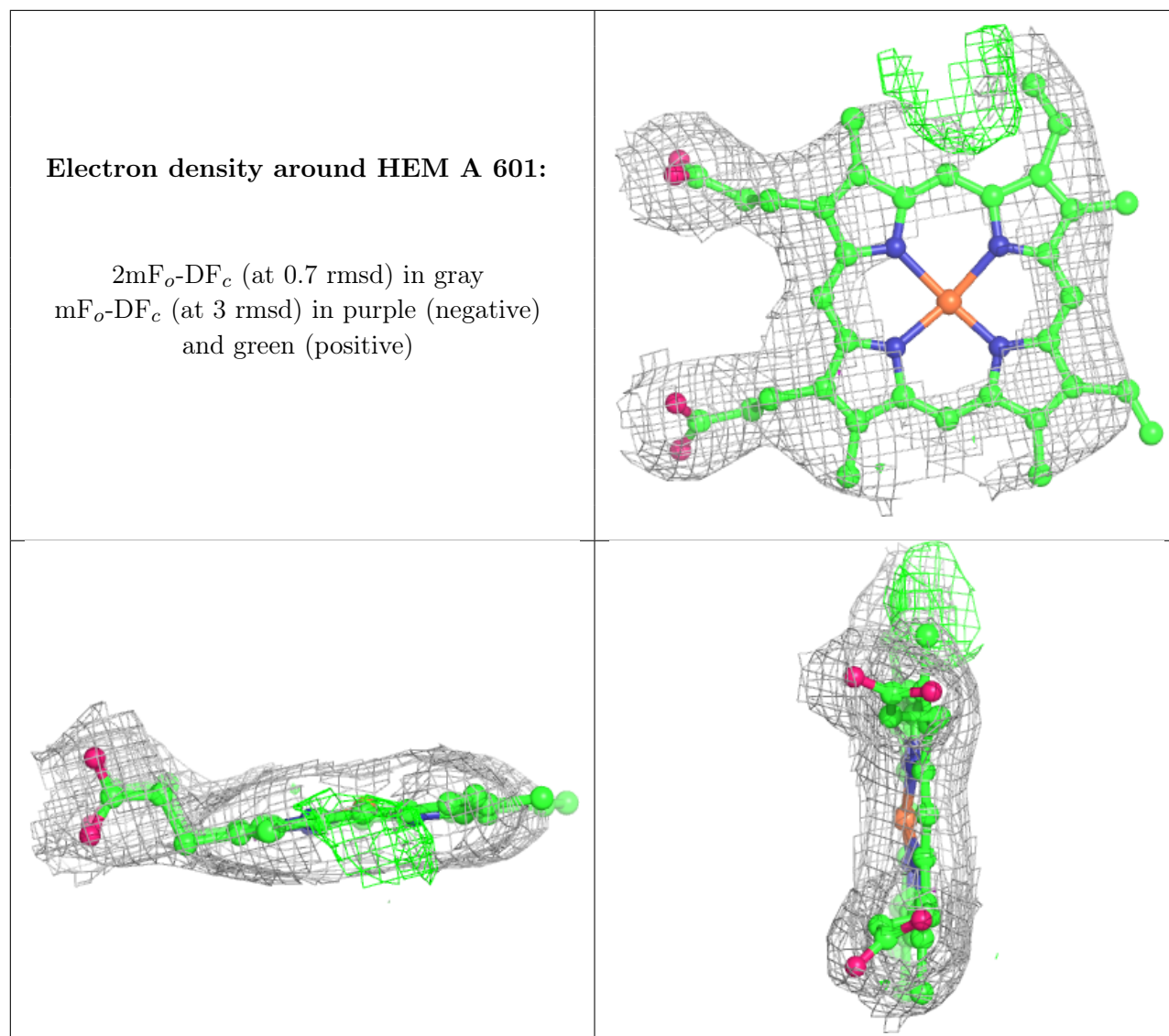
Mol	Type	Chain	Res	Atoms	RSCC	RSR	B-factors(Å ²)	Q<0.9
3	G0J	A	602	36/36	0.86	0.27	64,117,157,163	0
2	HEM	A	601	43/43	0.96	0.19	44,65,80,84	0

The following is a graphical depiction of the model fit to experimental electron density of all instances of the Ligand of Interest. In addition, ligands with molecular weight > 250 and outliers as shown on the geometry validation Tables will also be included. Each fit is shown from different orientation to approximate a three-dimensional view.

Electron density around G0J A 602:

$2mF_o-DF_c$ (at 0.7 rmsd) in gray
 mF_o-DF_c (at 3 rmsd) in purple (negative)
and green (positive)





6.5 Other polymers [i](#)

There are no such residues in this entry.