



Full wwPDB X-ray Structure Validation Report ⓘ

Mar 11, 2018 – 04:29 am GMT

PDB ID : 1DJ5
Title : CRYSTAL STRUCTURE OF R48A MUTANT OF CYTOCHROME C PER-
OXIDASE WITH N-HYDROXYGUANIDINE BOUND
Authors : Hirst, J.; Goodin, D.B.
Deposited on : 1999-12-01
Resolution : 1.93 Å(reported)

This is a Full wwPDB X-ray Structure Validation Report for a publicly released PDB entry.

We welcome your comments at validation@mail.wwpdb.org

A user guide is available at

<https://www.wwpdb.org/validation/2017/XrayValidationReportHelp>

with specific help available everywhere you see the ⓘ symbol.

The following versions of software and data (see [references ⓘ](#)) were used in the production of this report:

MolProbity : 4.02b-467
Mogul : 1.7.3 (157068), CSD as539be (2018)
Xtrriage (Phenix) : **NOT EXECUTED**
EDS : **NOT EXECUTED**
Percentile statistics : 20171227.v01 (using entries in the PDB archive December 27th 2017)
Ideal geometry (proteins) : Engh & Huber (2001)
Ideal geometry (DNA, RNA) : Parkinson et al. (1996)
Validation Pipeline (wwPDB-VP) : trunk30967

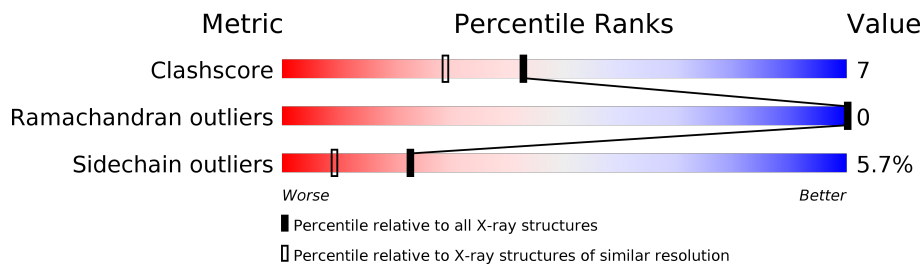
1 Overall quality at a glance

The following experimental techniques were used to determine the structure:

X-RAY DIFFRACTION

The reported resolution of this entry is 1.93 Å.

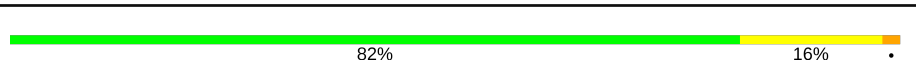
Percentile scores (ranging between 0-100) for global validation metrics of the entry are shown in the following graphic. The table shows the number of entries on which the scores are based.



Metric	Whole archive (#Entries)	Similar resolution (#Entries, resolution range(Å))
Clashscore	122126	3795 (1.96-1.92)
Ramachandran outliers	120053	3757 (1.96-1.92)
Sidechain outliers	120020	3757 (1.96-1.92)

The table below summarises the geometric issues observed across the polymeric chains and their fit to the electron density. The red, orange, yellow and green segments on the lower bar indicate the fraction of residues that contain outliers for ≥ 3 , 2, 1 and 0 types of geometric quality criteria. A grey segment represents the fraction of residues that are not modelled. The numeric value for each fraction is indicated below the corresponding segment, with a dot representing fractions $\leq 5\%$.

Note EDS was not executed.

Mol	Chain	Length	Quality of chain
1	A	291	

2 Entry composition [i](#)

There are 4 unique types of molecules in this entry. The entry contains 2775 atoms, of which 0 are hydrogens and 0 are deuteriums.

In the tables below, the ZeroOcc column contains the number of atoms modelled with zero occupancy, the AltConf column contains the number of residues with at least one atom in alternate conformation and the Trace column contains the number of residues modelled with at most 2 atoms.

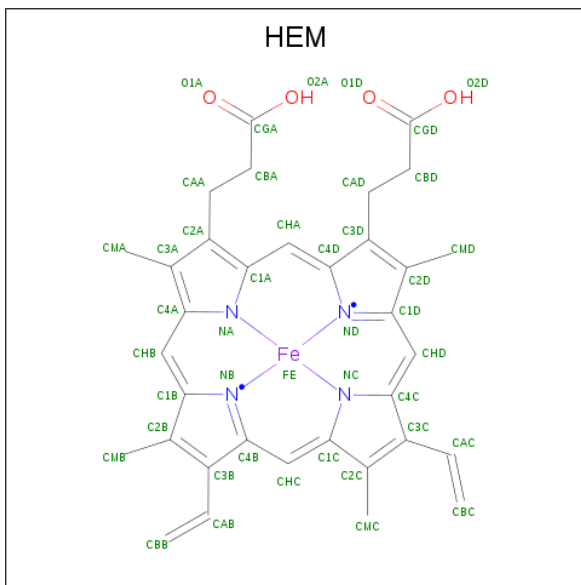
- Molecule 1 is a protein called CYTOCHROME C PEROXIDASE.

Mol	Chain	Residues	Atoms					ZeroOcc	AltConf	Trace
			Total	C	N	O	S			
1	A	291	2337	1493	387	451	6	0	0	0

There is a discrepancy between the modelled and reference sequences:

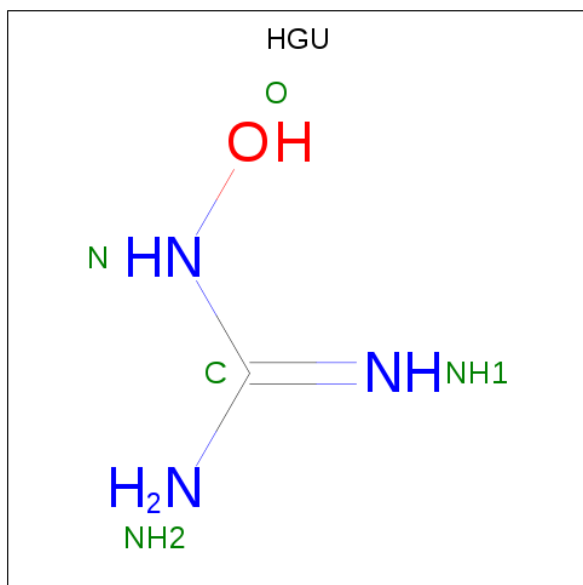
Chain	Residue	Modelled	Actual	Comment	Reference
A	48	ALA	ARG	ENGINEERED MUTATION	UNP P00431

- Molecule 2 is PROTOPORPHYRIN IX CONTAINING FE (three-letter code: HEM) (formula: $C_{34}H_{32}FeN_4O_4$).



Mol	Chain	Residues	Atoms					ZeroOcc	AltConf
			Total	C	Fe	N	O		
2	A	1	43	34	1	4	4	0	0

- Molecule 3 is N-HYDROXYGUANIDINE (three-letter code: HGU) (formula: CH_5N_3O).



Mol	Chain	Residues	Atoms				ZeroOcc	AltConf
			Total	C	N	O		
3	A	1	5	1	3	1	0	0

- Molecule 4 is water.

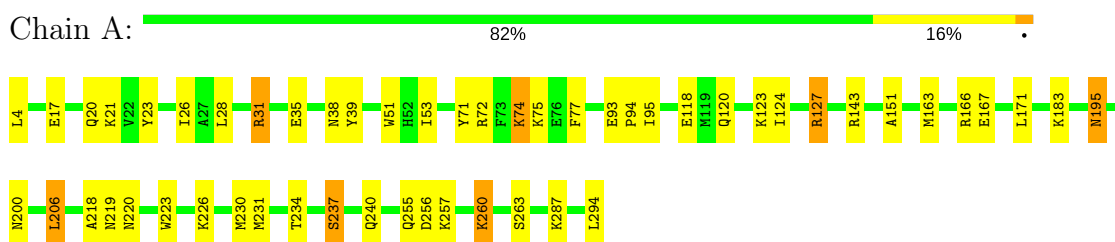
Mol	Chain	Residues	Atoms		ZeroOcc	AltConf
			Total	O		
4	A	390	390	390	0	0

3 Residue-property plots [i](#)

These plots are drawn for all protein, RNA and DNA chains in the entry. The first graphic for a chain summarises the proportions of the various outlier classes displayed in the second graphic. The second graphic shows the sequence view annotated by issues in geometry. Residues are color-coded according to the number of geometric quality criteria for which they contain at least one outlier: green = 0, yellow = 1, orange = 2 and red = 3 or more. Stretches of 2 or more consecutive residues without any outlier are shown as a green connector. Residues present in the sample, but not in the model, are shown in grey.

Note EDS was not executed.

- Molecule 1: CYTOCHROME C PEROXIDASE



4 Data and refinement statistics

Xtrriage (Phenix) and EDS were not executed - this section is therefore incomplete.

Property	Value	Source
Space group	P 21 21 21	Depositor
Cell constants a, b, c, α , β , γ	105.48Å 74.32Å 44.31Å 90.00° 90.00° 90.00°	Depositor
Resolution (Å)	10.00 – 1.93	Depositor
% Data completeness (in resolution range)	(Not available) (10.00-1.93)	Depositor
R_{merge}	0.07	Depositor
R_{sym}	(Not available)	Depositor
Refinement program	SHELXL-97	Depositor
R, R_{free}	(Not available) , (Not available)	Depositor
Estimated twinning fraction	No twinning to report.	Xtrriage
Total number of atoms	2775	wwPDB-VP
Average B, all atoms (Å ²)	13.0	wwPDB-VP

5 Model quality [i](#)

5.1 Standard geometry [i](#)

Bond lengths and bond angles in the following residue types are not validated in this section: HEM, HGU

The Z score for a bond length (or angle) is the number of standard deviations the observed value is removed from the expected value. A bond length (or angle) with $|Z| > 5$ is considered an outlier worth inspection. RMSZ is the root-mean-square of all Z scores of the bond lengths (or angles).

Mol	Chain	Bond lengths		Bond angles	
		RMSZ	# $ Z > 5$	RMSZ	# $ Z > 5$
1	A	0.40	1/2403 (0.0%)	1.03	9/3256 (0.3%)

All (1) bond length outliers are listed below:

Mol	Chain	Res	Type	Atoms	Z	Observed(Å)	Ideal(Å)
1	A	294	LEU	C-OXT	8.81	1.40	1.23

All (9) bond angle outliers are listed below:

Mol	Chain	Res	Type	Atoms	Z	Observed(°)	Ideal(°)
1	A	72	ARG	CD-NE-CZ	11.65	139.91	123.60
1	A	127	ARG	NE-CZ-NH1	-10.95	114.82	120.30
1	A	127	ARG	NE-CZ-NH2	9.17	124.88	120.30
1	A	23	TYR	CB-CG-CD2	9.03	126.42	121.00
1	A	31	ARG	CD-NE-CZ	7.19	133.67	123.60
1	A	31	ARG	NE-CZ-NH1	-7.07	116.76	120.30
1	A	72	ARG	NE-CZ-NH1	6.83	123.72	120.30
1	A	31	ARG	NE-CZ-NH2	5.91	123.25	120.30
1	A	127	ARG	CD-NE-CZ	5.29	131.01	123.60

There are no chirality outliers.

There are no planarity outliers.

5.2 Too-close contacts [i](#)

In the following table, the Non-H and H(model) columns list the number of non-hydrogen atoms and hydrogen atoms in the chain respectively. The H(added) column lists the number of hydrogen atoms added and optimized by MolProbity. The Clashes column lists the number of clashes within the asymmetric unit, whereas Symm-Clashes lists symmetry related clashes.

Mol	Chain	Non-H	H(model)	H(added)	Clashes	Symm-Clashes
1	A	2337	0	2200	34	0
2	A	43	0	30	0	0
3	A	5	0	3	0	0
4	A	390	0	0	8	0
All	All	2775	0	2233	34	0

The all-atom clashscore is defined as the number of clashes found per 1000 atoms (including hydrogen atoms). The all-atom clashscore for this structure is 7.

All (34) close contacts within the same asymmetric unit are listed below, sorted by their clash magnitude.

Atom-1	Atom-2	Interatomic distance (Å)	Clash overlap (Å)
1:A:20:GLN:HE22	1:A:287:LYS:H	1.29	0.80
1:A:17:GLU:HG3	4:A:475:HOH:O	1.84	0.76
1:A:256:ASP:O	1:A:260:LYS:HD2	1.98	0.64
1:A:120:GLN:HG3	4:A:799:HOH:O	2.01	0.61
1:A:260:LYS:N	1:A:260:LYS:HE3	2.15	0.61
1:A:195:ASN:HD22	1:A:195:ASN:H	1.49	0.60
1:A:93:GLU:HG2	4:A:662:HOH:O	2.03	0.59
1:A:200:ASN:H	1:A:255:GLN:HE21	1.50	0.58
1:A:124:ILE:HD12	1:A:263:SER:HA	1.87	0.57
1:A:195:ASN:HD22	1:A:195:ASN:N	2.04	0.55
1:A:123:LYS:O	1:A:124:ILE:HD13	2.08	0.54
1:A:237:SER:HA	1:A:240:GLN:HE21	1.73	0.54
1:A:74:LYS:HG2	1:A:75:LYS:N	2.24	0.53
1:A:118:GLU:HA	4:A:805:HOH:O	2.10	0.51
1:A:206:LEU:HD13	1:A:231:MET:SD	2.52	0.50
1:A:195:ASN:ND2	1:A:195:ASN:H	2.11	0.49
1:A:74:LYS:HA	1:A:77:PHE:CE1	2.49	0.48
1:A:53:ILE:HG22	1:A:71:TYR:HB2	1.96	0.46
1:A:120:GLN:NE2	4:A:805:HOH:O	2.50	0.45
1:A:218:ALA:O	1:A:219:ASN:HB2	2.16	0.45
1:A:143:ARG:HB2	4:A:375:HOH:O	2.16	0.45
1:A:151:ALA:N	1:A:237:SER:OG	2.50	0.45
1:A:166:ARG:NH1	1:A:257:LYS:NZ	2.65	0.44
1:A:26:ILE:HG12	1:A:95:ILE:HD13	1.98	0.44
1:A:21:LYS:NZ	4:A:806:HOH:O	2.50	0.43
1:A:234:THR:O	1:A:237:SER:HB2	2.18	0.43
1:A:93:GLU:N	1:A:94:PRO:HD2	2.34	0.43
1:A:163:MET:HA	1:A:167:GLU:OE1	2.20	0.42
1:A:38:ASN:O	1:A:39:TYR:HB2	2.19	0.42
1:A:74:LYS:HA	1:A:77:PHE:CZ	2.55	0.42

Continued on next page...

Continued from previous page...

Atom-1	Atom-2	Interatomic distance (Å)	Clash overlap (Å)
1:A:223:TRP:O	1:A:230:MET:HA	2.20	0.42
1:A:123:LYS:C	1:A:124:ILE:HD13	2.40	0.41
1:A:220:ASN:ND2	4:A:553:HOH:O	2.50	0.41
1:A:195:ASN:N	1:A:195:ASN:ND2	2.69	0.41

There are no symmetry-related clashes.

5.3 Torsion angles [i](#)

5.3.1 Protein backbone [i](#)

In the following table, the Percentiles column shows the percent Ramachandran outliers of the chain as a percentile score with respect to all X-ray entries followed by that with respect to entries of similar resolution.

The Analysed column shows the number of residues for which the backbone conformation was analysed, and the total number of residues.

Mol	Chain	Analysed	Favoured	Allowed	Outliers	Percentiles
1	A	289/291 (99%)	287 (99%)	2 (1%)	0	100 100

There are no Ramachandran outliers to report.

5.3.2 Protein sidechains [i](#)

In the following table, the Percentiles column shows the percent sidechain outliers of the chain as a percentile score with respect to all X-ray entries followed by that with respect to entries of similar resolution.

The Analysed column shows the number of residues for which the sidechain conformation was analysed, and the total number of residues.

Mol	Chain	Analysed	Rotameric	Outliers	Percentiles
1	A	246/248 (99%)	232 (94%)	14 (6%)	23 9

All (14) residues with a non-rotameric sidechain are listed below:

Mol	Chain	Res	Type
1	A	4	LEU
1	A	28	LEU

Continued on next page...

Continued from previous page...

Mol	Chain	Res	Type
1	A	31	ARG
1	A	35	GLU
1	A	51	TRP
1	A	74	LYS
1	A	127	ARG
1	A	171	LEU
1	A	183	LYS
1	A	195	ASN
1	A	206	LEU
1	A	226	LYS
1	A	237	SER
1	A	260	LYS

Some sidechains can be flipped to improve hydrogen bonding and reduce clashes. All (11) such sidechains are listed below:

Mol	Chain	Res	Type
1	A	20	GLN
1	A	24	ASN
1	A	38	ASN
1	A	78	ASN
1	A	162	ASN
1	A	195	ASN
1	A	208	ASN
1	A	220	ASN
1	A	240	GLN
1	A	255	GLN
1	A	292	GLN

5.3.3 RNA [i](#)

There are no RNA molecules in this entry.

5.4 Non-standard residues in protein, DNA, RNA chains [i](#)

There are no non-standard protein/DNA/RNA residues in this entry.

5.5 Carbohydrates [i](#)

There are no carbohydrates in this entry.

5.6 Ligand geometry

2 ligands are modelled in this entry.

In the following table, the Counts columns list the number of bonds (or angles) for which Mogul statistics could be retrieved, the number of bonds (or angles) that are observed in the model and the number of bonds (or angles) that are defined in the Chemical Component Dictionary. The Link column lists molecule types, if any, to which the group is linked. The Z score for a bond length (or angle) is the number of standard deviations the observed value is removed from the expected value. A bond length (or angle) with $|Z| > 2$ is considered an outlier worth inspection. RMSZ is the root-mean-square of all Z scores of the bond lengths (or angles).

Mol	Type	Chain	Res	Link	Bond lengths			Bond angles		
					Counts	RMSZ	# Z > 2	Counts	RMSZ	# Z > 2
2	HEM	A	1	1,3	27,50,50	1.32	4 (14%)	17,82,82	1.32	3 (17%)
3	HGU	A	2	2	4,4,4	0.92	0	3,4,4	0.48	0

In the following table, the Chirals column lists the number of chiral outliers, the number of chiral centers analysed, the number of these observed in the model and the number defined in the Chemical Component Dictionary. Similar counts are reported in the Torsion and Rings columns. '-' means no outliers of that kind were identified.

Mol	Type	Chain	Res	Link	Chirals	Torsions	Rings
2	HEM	A	1	1,3	-	0/6/54/54	0/0/8/8
3	HGU	A	2	2	-	0/0/2/2	0/0/0/0

All (4) bond length outliers are listed below:

Mol	Chain	Res	Type	Atoms	Z	Observed(Å)	Ideal(Å)
2	A	1	HEM	C3B-CAB	-3.53	1.40	1.47
2	A	1	HEM	C3C-CAC	-3.13	1.41	1.47
2	A	1	HEM	CBB-CAB	2.08	1.43	1.29
2	A	1	HEM	CBC-CAC	2.38	1.45	1.29

All (3) bond angle outliers are listed below:

Mol	Chain	Res	Type	Atoms	Z	Observed(°)	Ideal(°)
2	A	1	HEM	C4A-C3A-C2A	-3.19	104.78	107.00
2	A	1	HEM	C1D-C2D-C3D	-2.37	105.34	107.00
2	A	1	HEM	CMB-C2B-C3B	2.35	129.15	124.88

There are no chirality outliers.

There are no torsion outliers.

There are no ring outliers.

No monomer is involved in short contacts.

5.7 Other polymers

There are no such residues in this entry.

5.8 Polymer linkage issues

There are no chain breaks in this entry.

6 Fit of model and data [i](#)

6.1 Protein, DNA and RNA chains [i](#)

EDS was not executed - this section is therefore empty.

6.2 Non-standard residues in protein, DNA, RNA chains [i](#)

EDS was not executed - this section is therefore empty.

6.3 Carbohydrates [i](#)

EDS was not executed - this section is therefore empty.

6.4 Ligands [i](#)

EDS was not executed - this section is therefore empty.

6.5 Other polymers [i](#)

EDS was not executed - this section is therefore empty.