



# Full wwPDB X-ray Structure Validation Report ⓘ

Mar 9, 2018 – 05:38 pm GMT

PDB ID : 5DJD  
Title : Fc Heterodimer Design 5.1 T366V + Y407F  
Authors : Atwell, S.; Leaver-Fay, A.; Froning, K.J.; Aldaz, H.; Pustilnik, A.; Lu, F.;  
Huang, F.; Yuan, R.; Dhanani, S.H.; Chamberlain, A.K.; Fitchett, J.R.;  
Gutierrez, B.; Hendle, J.; Demarest, S.J.; Kuhlman, B.  
Deposited on : 2015-09-02  
Resolution : 2.30 Å(reported)

This is a Full wwPDB X-ray Structure Validation Report for a publicly released PDB entry.

We welcome your comments at [validation@mail.wwpdb.org](mailto:validation@mail.wwpdb.org)

A user guide is available at

<https://www.wwpdb.org/validation/2017/XrayValidationReportHelp>

with specific help available everywhere you see the ⓘ symbol.

---

The following versions of software and data (see [references ⓘ](#)) were used in the production of this report:

MolProbity : 4.02b-467  
Mogul : 1.7.3 (157068), CSD as539be (2018)  
Xtriage (Phenix) : 1.13  
EDS : trunk30967  
Percentile statistics : 20171227.v01 (using entries in the PDB archive December 27th 2017)  
Refmac : 5.8.0158  
CCP4 : 7.0 (Gargrove)  
Ideal geometry (proteins) : Engh & Huber (2001)  
Ideal geometry (DNA, RNA) : Parkinson et al. (1996)  
Validation Pipeline (wwPDB-VP) : trunk30967

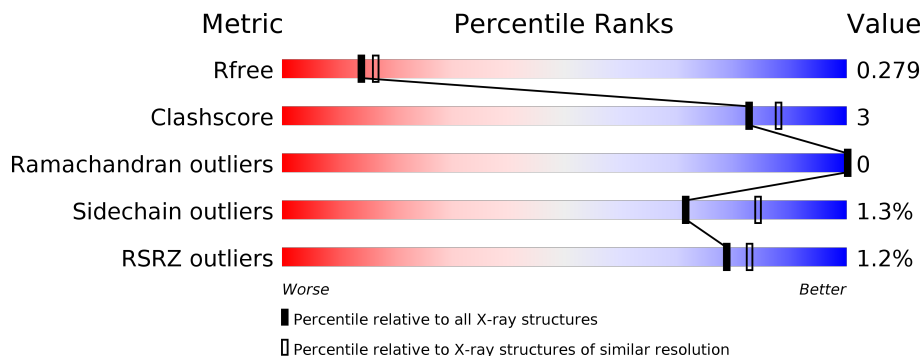
# 1 Overall quality at a glance

The following experimental techniques were used to determine the structure:

*X-RAY DIFFRACTION*

The reported resolution of this entry is 2.30 Å.

Percentile scores (ranging between 0-100) for global validation metrics of the entry are shown in the following graphic. The table shows the number of entries on which the scores are based.



Metric	Whole archive (#Entries)	Similar resolution (#Entries, resolution range(Å))
$R_{free}$	111664	4477 (2.30-2.30)
Clashscore	122126	5072 (2.30-2.30)
Ramachandran outliers	120053	5022 (2.30-2.30)
Sidechain outliers	120020	5021 (2.30-2.30)
RSRZ outliers	108989	4374 (2.30-2.30)

The table below summarises the geometric issues observed across the polymeric chains and their fit to the electron density. The red, orange, yellow and green segments on the lower bar indicate the fraction of residues that contain outliers for  $\geq 3$ , 2, 1 and 0 types of geometric quality criteria. A grey segment represents the fraction of residues that are not modelled. The numeric value for each fraction is indicated below the corresponding segment, with a dot representing fractions  $\leq 5\%$ . The upper red bar (where present) indicates the fraction of residues that have poor fit to the electron density. The numeric value is given above the bar.

Mol	Chain	Length	Quality of chain
1	A	227	 84% 8% 8%
2	B	240	 78% 8% 14%
3	C	13	 23% 69% 31%

## 2 Entry composition [i](#)

There are 9 unique types of molecules in this entry. The entry contains 3673 atoms, of which 0 are hydrogens and 0 are deuteriums.

In the tables below, the ZeroOcc column contains the number of atoms modelled with zero occupancy, the AltConf column contains the number of residues with at least one atom in alternate conformation and the Trace column contains the number of residues modelled with at most 2 atoms.

- Molecule 1 is a protein called Ig gamma-1 chain C region.

Mol	Chain	Residues	Atoms					ZeroOcc	AltConf	Trace
			Total	C	N	O	S			
1	A	208	1651	1050	276	318	7	0	1	0

There are 3 discrepancies between the modelled and reference sequences:

Chain	Residue	Modelled	Actual	Comment	Reference
A	356	GLU	ASP	variant	UNP P01857
A	358	MET	LEU	variant	UNP P01857
A	366	VAL	THR	engineered mutation	UNP P01857

- Molecule 2 is a protein called Ig gamma-1 chain C region.

Mol	Chain	Residues	Atoms					ZeroOcc	AltConf	Trace
			Total	C	N	O	S			
2	B	207	1631	1041	273	311	6	0	0	0

There are 19 discrepancies between the modelled and reference sequences:

Chain	Residue	Modelled	Actual	Comment	Reference
B	208	HIS	-	expression tag	UNP P01857
B	209	HIS	-	expression tag	UNP P01857
B	210	HIS	-	expression tag	UNP P01857
B	211	HIS	-	expression tag	UNP P01857
B	212	HIS	-	expression tag	UNP P01857
B	213	HIS	-	expression tag	UNP P01857
B	214	HIS	-	expression tag	UNP P01857
B	215	HIS	-	expression tag	UNP P01857
B	216	SER	-	expression tag	UNP P01857
B	217	GLY	-	expression tag	UNP P01857
B	218	SER	-	expression tag	UNP P01857
B	219	GLY	-	expression tag	UNP P01857
B	220	SER	-	expression tag	UNP P01857

*Continued on next page...*

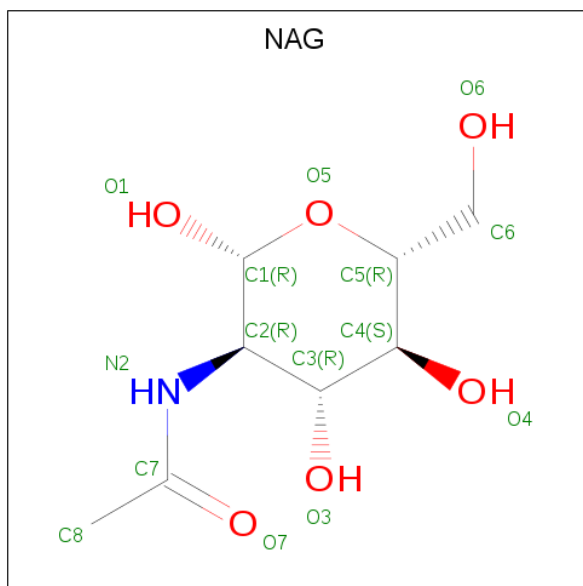
Continued from previous page...

Chain	Residue	Modelled	Actual	Comment	Reference
B	252	GLU	MET	engineered mutation	UNP P01857
B	253	ALA	ILE	engineered mutation	UNP P01857
B	356	GLU	ASP	variant	UNP P01857
B	358	MET	LEU	variant	UNP P01857
B	407	PHE	TYR	engineered mutation	UNP P01857
B	435	ALA	HIS	engineered mutation	UNP P01857

- Molecule 3 is a protein called Fc-III peptide.

Mol	Chain	Residues	Atoms				ZeroOcc	AltConf	Trace	
			Total	C	N	O				S
3	C	13	103	67	17	17	2	0	0	0

- Molecule 4 is N-ACETYL-D-GLUCOSAMINE (three-letter code: NAG) (formula: C<sub>8</sub>H<sub>15</sub>NO<sub>6</sub>).



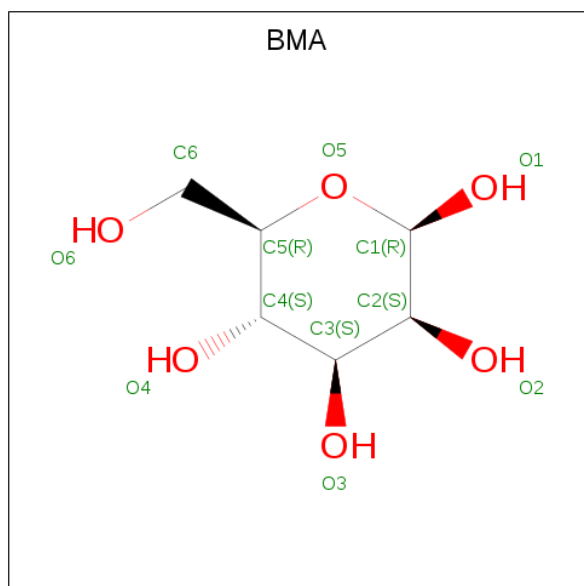
Mol	Chain	Residues	Atoms				ZeroOcc	AltConf
			Total	C	N	O		
4	A	1	14	8	1	5	0	0
4	A	1	14	8	1	5	0	0
4	A	1	14	8	1	5	0	0
4	B	1	14	8	1	5	0	0
4	B	1	14	8	1	5	0	0

Continued on next page...

Continued from previous page...

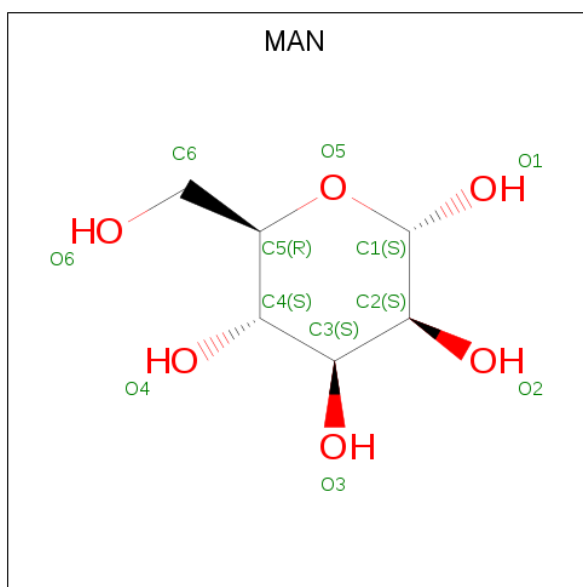
Mol	Chain	Residues	Atoms				ZeroOcc	AltConf
			Total	C	N	O		
4	B	1	14	8	1	5	0	0

- Molecule 5 is BETA-D-MANNOSE (three-letter code: BMA) (formula: C<sub>6</sub>H<sub>12</sub>O<sub>6</sub>).



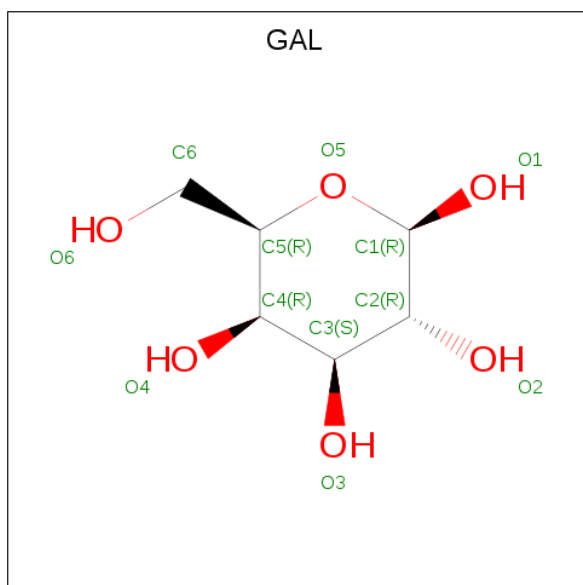
Mol	Chain	Residues	Atoms			ZeroOcc	AltConf
			Total	C	O		
5	A	1	11	6	5	0	0
5	B	1	11	6	5	0	0

- Molecule 6 is ALPHA-D-MANNOSE (three-letter code: MAN) (formula: C<sub>6</sub>H<sub>12</sub>O<sub>6</sub>).



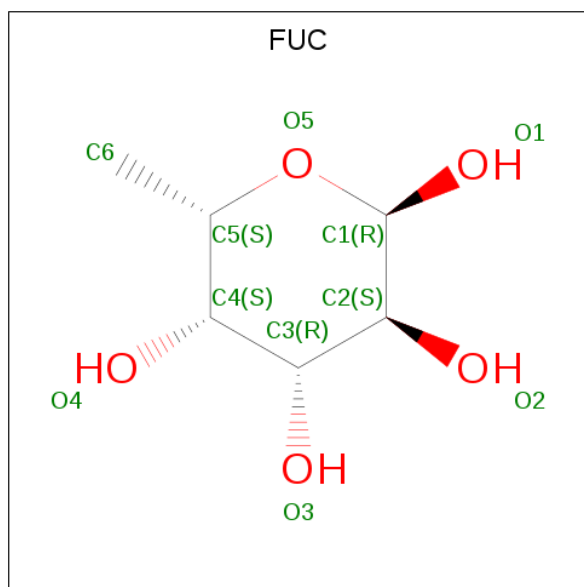
Mol	Chain	Residues	Atoms	ZeroOcc	AltConf
6	A	1	Total C O 11 6 5	0	0
6	A	1	Total C O 11 6 5	0	0
6	B	1	Total C O 11 6 5	0	0
6	B	1	Total C O 11 6 5	0	0

- Molecule 7 is BETA-D-GALACTOSE (three-letter code: GAL) (formula: C<sub>6</sub>H<sub>12</sub>O<sub>6</sub>).



Mol	Chain	Residues	Atoms	ZeroOcc	AltConf
7	A	1	Total C O 11 6 5	0	0
7	B	1	Total C O 11 6 5	0	0

- Molecule 8 is ALPHA-L-FUCOSE (three-letter code: FUC) (formula: C<sub>6</sub>H<sub>12</sub>O<sub>5</sub>).



Mol	Chain	Residues	Atoms	ZeroOcc	AltConf
8	A	1	Total C O 10 6 4	0	0
8	B	1	Total C O 10 6 4	0	0

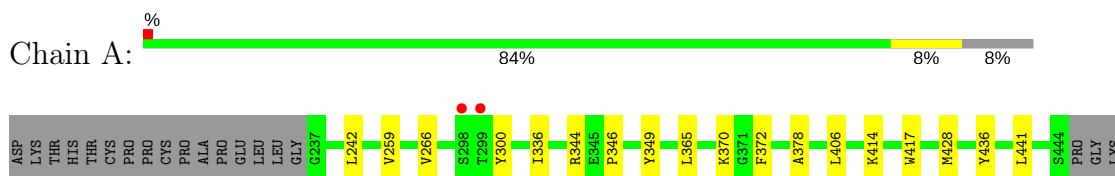
- Molecule 9 is water.

Mol	Chain	Residues	Atoms	ZeroOcc	AltConf
9	A	42	Total O 42 42	0	0
9	B	53	Total O 53 53	0	0
9	C	1	Total O 1 1	0	0

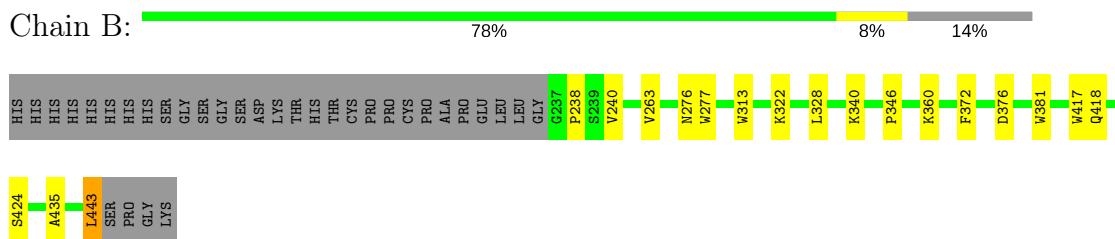
### 3 Residue-property plots [i](#)

These plots are drawn for all protein, RNA and DNA chains in the entry. The first graphic for a chain summarises the proportions of the various outlier classes displayed in the second graphic. The second graphic shows the sequence view annotated by issues in geometry and electron density. Residues are color-coded according to the number of geometric quality criteria for which they contain at least one outlier: green = 0, yellow = 1, orange = 2 and red = 3 or more. A red dot above a residue indicates a poor fit to the electron density ( $RSRZ > 2$ ). Stretches of 2 or more consecutive residues without any outlier are shown as a green connector. Residues present in the sample, but not in the model, are shown in grey.

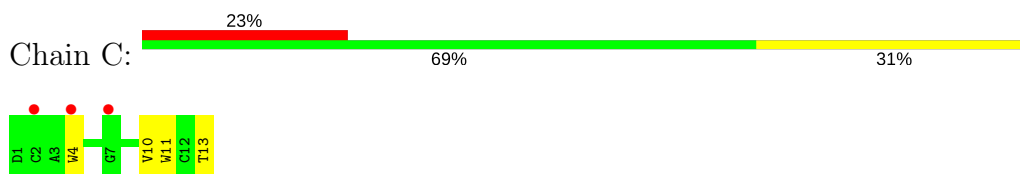
- Molecule 1: Ig gamma-1 chain C region



- Molecule 2: Ig gamma-1 chain C region



- Molecule 3: Fc-III peptide





## 4 Data and refinement statistics

Property	Value	Source
Space group	P 1 21 1	Depositor
Cell constants a, b, c, $\alpha$ , $\beta$ , $\gamma$	60.38Å 67.44Å 79.03Å 90.00° 105.29° 90.00°	Depositor
Resolution (Å)	30.00 – 2.30 41.32 – 2.30	Depositor EDS
% Data completeness (in resolution range)	97.9 (30.00-2.30) 97.9 (41.32-2.30)	Depositor EDS
$R_{merge}$	(Not available)	Depositor
$R_{sym}$	0.14	Depositor
$\langle I/\sigma(I) \rangle$ <sup>1</sup>	1.99 (at 2.29Å)	Xtrriage
Refinement program	REFMAC 5.7.0017	Depositor
R, $R_{free}$	0.220 , 0.276 0.222 , 0.279	Depositor DCC
$R_{free}$ test set	1377 reflections (5.13%)	wwPDB-VP
Wilson B-factor (Å <sup>2</sup> )	37.5	Xtrriage
Anisotropy	0.035	Xtrriage
Bulk solvent $k_{sol}$ (e/Å <sup>3</sup> ), $B_{sol}$ (Å <sup>2</sup> )	0.33 , 32.8	EDS
L-test for twinning <sup>2</sup>	$\langle  L  \rangle = 0.43$ , $\langle L^2 \rangle = 0.25$	Xtrriage
Estimated twinning fraction	No twinning to report.	Xtrriage
$F_o, F_c$ correlation	0.93	EDS
Total number of atoms	3673	wwPDB-VP
Average B, all atoms (Å <sup>2</sup> )	37.0	wwPDB-VP

Xtrriage's analysis on translational NCS is as follows: *The largest off-origin peak in the Patterson function is 7.10% of the height of the origin peak. No significant pseudotranslation is detected.*

<sup>1</sup>Intensities estimated from amplitudes.

<sup>2</sup>Theoretical values of  $\langle |L| \rangle$ ,  $\langle L^2 \rangle$  for acentric reflections are 0.5, 0.333 respectively for untwinned datasets, and 0.375, 0.2 for perfectly twinned datasets.

## 5 Model quality [i](#)

### 5.1 Standard geometry [i](#)

Bond lengths and bond angles in the following residue types are not validated in this section: MAN, GAL, BMA, NAG, FUC

The Z score for a bond length (or angle) is the number of standard deviations the observed value is removed from the expected value. A bond length (or angle) with  $|Z| > 5$  is considered an outlier worth inspection. RMSZ is the root-mean-square of all Z scores of the bond lengths (or angles).

Mol	Chain	Bond lengths		Bond angles	
		RMSZ	# Z  >5	RMSZ	# Z  >5
1	A	0.54	1/1701 (0.1%)	0.60	0/2319
2	B	0.53	3/1676 (0.2%)	0.58	0/2285
3	C	1.09	2/107 (1.9%)	0.62	0/146
All	All	0.56	6/3484 (0.2%)	0.59	0/4750

All (6) bond length outliers are listed below:

Mol	Chain	Res	Type	Atoms	Z	Observed(Å)	Ideal(Å)
1	A	417	TRP	CD2-CE2	5.60	1.48	1.41
3	C	4	TRP	CD2-CE2	5.54	1.48	1.41
3	C	11	TRP	CD2-CE2	5.49	1.48	1.41
2	B	313	TRP	CD2-CE2	5.13	1.47	1.41
2	B	417	TRP	CD2-CE2	5.12	1.47	1.41
2	B	277	TRP	CD2-CE2	5.04	1.47	1.41

There are no bond angle outliers.

There are no chirality outliers.

There are no planarity outliers.

### 5.2 Too-close contacts [i](#)

In the following table, the Non-H and H(model) columns list the number of non-hydrogen atoms and hydrogen atoms in the chain respectively. The H(added) column lists the number of hydrogen atoms added and optimized by MolProbity. The Clashes column lists the number of clashes within the asymmetric unit, whereas Symm-Clashes lists symmetry related clashes.

Mol	Chain	Non-H	H(model)	H(added)	Clashes	Symm-Clashes
1	A	1651	0	1602	11	0
2	B	1631	0	1589	9	0

*Continued on next page...*

Continued from previous page...

Mol	Chain	Non-H	H(model)	H(added)	Clashes	Symm-Clashes
3	C	103	0	89	1	0
4	A	42	0	35	0	0
4	B	42	0	35	0	0
5	A	11	0	8	0	0
5	B	11	0	8	0	0
6	A	22	0	19	0	0
6	B	22	0	19	0	0
7	A	11	0	10	0	0
7	B	11	0	10	0	0
8	A	10	0	10	0	0
8	B	10	0	10	0	0
9	A	42	0	0	2	0
9	B	53	0	0	2	0
9	C	1	0	0	0	0
All	All	3673	0	3444	19	0

The all-atom clashscore is defined as the number of clashes found per 1000 atoms (including hydrogen atoms). The all-atom clashscore for this structure is 3.

All (19) close contacts within the same asymmetric unit are listed below, sorted by their clash magnitude.

Atom-1	Atom-2	Interatomic distance (Å)	Clash overlap (Å)
1:A:346:PRO:HB3	1:A:372:PHE:HB3	1.74	0.69
1:A:365:LEU:HB3	1:A:441:LEU:HD21	1.75	0.68
2:B:346:PRO:HB3	2:B:372:PHE:HB3	1.77	0.67
2:B:435:ALA:HB2	9:B:639:HOH:O	1.93	0.66
1:A:365:LEU:HB3	1:A:441:LEU:CD2	2.38	0.52
1:A:378:ALA:HB3	1:A:428:MET:HB2	1.95	0.49
2:B:238:PRO:HD2	2:B:328:LEU:CD1	2.42	0.49
2:B:376:ASP:HA	9:B:648:HOH:O	2.15	0.47
1:A:266:VAL:HB	1:A:300:TYR:HB2	1.96	0.47
1:A:414:LYS:HE2	9:A:632:HOH:O	2.16	0.46
1:A:344:ARG:NH1	9:A:601:HOH:O	2.28	0.46
1:A:349:TYR:OH	2:B:360:LYS:HE3	2.16	0.45
2:B:276:ASN:HB2	2:B:322:LYS:HB3	2.00	0.43
2:B:240:VAL:HG22	2:B:263:VAL:HG22	2.01	0.43
1:A:406:LEU:HD12	1:A:406:LEU:C	2.41	0.41
2:B:418:GLN:HA	2:B:443:LEU:HD12	2.02	0.41
1:A:242:LEU:HG	1:A:336:ILE:HG12	2.02	0.40
2:B:381:TRP:HA	2:B:424:SER:O	2.22	0.40
1:A:436:TYR:HB2	3:C:10:VAL:HG11	2.04	0.40

There are no symmetry-related clashes.

## 5.3 Torsion angles [i](#)

### 5.3.1 Protein backbone [i](#)

In the following table, the Percentiles column shows the percent Ramachandran outliers of the chain as a percentile score with respect to all X-ray entries followed by that with respect to entries of similar resolution.

The Analysed column shows the number of residues for which the backbone conformation was analysed, and the total number of residues.

Mol	Chain	Analysed	Favoured	Allowed	Outliers	Percentiles	
1	A	207/227 (91%)	202 (98%)	5 (2%)	0	100	100
2	B	205/240 (85%)	198 (97%)	7 (3%)	0	100	100
3	C	11/13 (85%)	11 (100%)	0	0	100	100
All	All	423/480 (88%)	411 (97%)	12 (3%)	0	100	100

There are no Ramachandran outliers to report.

### 5.3.2 Protein sidechains [i](#)

In the following table, the Percentiles column shows the percent sidechain outliers of the chain as a percentile score with respect to all X-ray entries followed by that with respect to entries of similar resolution.

The Analysed column shows the number of residues for which the sidechain conformation was analysed, and the total number of residues.

Mol	Chain	Analysed	Rotameric	Outliers	Percentiles	
1	A	191/210 (91%)	189 (99%)	2 (1%)	78	89
2	B	186/219 (85%)	184 (99%)	2 (1%)	76	87
3	C	10/11 (91%)	9 (90%)	1 (10%)	8	10
All	All	387/440 (88%)	382 (99%)	5 (1%)	71	84

All (5) residues with a non-rotameric sidechain are listed below:

Mol	Chain	Res	Type
1	A	259	VAL
1	A	370	LYS

*Continued on next page...*

*Continued from previous page...*

Mol	Chain	Res	Type
2	B	340	LYS
2	B	443	LEU
3	C	13	THR

Some sidechains can be flipped to improve hydrogen bonding and reduce clashes. All (6) such sidechains are listed below:

Mol	Chain	Res	Type
1	A	418	GLN
2	B	347	GLN
2	B	361	ASN
2	B	384	ASN
2	B	418	GLN
2	B	434	ASN

### 5.3.3 RNA [i](#)

There are no RNA molecules in this entry.

## 5.4 Non-standard residues in protein, DNA, RNA chains [i](#)

There are no non-standard protein/DNA/RNA residues in this entry.

## 5.5 Carbohydrates [i](#)

There are no carbohydrates in this entry.

## 5.6 Ligand geometry [i](#)

16 ligands are modelled in this entry.

In the following table, the Counts columns list the number of bonds (or angles) for which Mogul statistics could be retrieved, the number of bonds (or angles) that are observed in the model and the number of bonds (or angles) that are defined in the Chemical Component Dictionary. The Link column lists molecule types, if any, to which the group is linked. The Z score for a bond length (or angle) is the number of standard deviations the observed value is removed from the expected value. A bond length (or angle) with  $|Z| > 2$  is considered an outlier worth inspection. RMSZ is the root-mean-square of all Z scores of the bond lengths (or angles).

Mol	Type	Chain	Res	Link	Bond lengths			Bond angles		
					Counts	RMSZ	# Z  > 2	Counts	RMSZ	# Z  > 2
4	NAG	A	501	1,8,4	14,14,15	0.59	0	17,19,21	0.93	1 (5%)
4	NAG	A	502	5,4	14,14,15	0.50	0	17,19,21	1.30	2 (11%)
5	BMA	A	503	4,6	11,11,12	0.39	0	15,15,17	1.69	2 (13%)
6	MAN	A	504	5,4	11,11,12	0.58	0	15,15,17	1.16	1 (6%)
4	NAG	A	505	7,6	14,14,15	0.43	0	17,19,21	0.60	0
7	GAL	A	506	4	11,11,12	0.68	0	15,15,17	1.19	2 (13%)
8	FUC	A	507	4	9,10,11	0.78	0	13,14,16	0.80	0
6	MAN	A	508	5	11,11,12	0.60	0	15,15,17	1.75	4 (26%)
4	NAG	B	501	8,2,4	14,14,15	0.59	0	17,19,21	0.90	0
4	NAG	B	502	5,4	14,14,15	0.46	0	17,19,21	1.33	2 (11%)
5	BMA	B	503	4,6	11,11,12	0.52	0	15,15,17	1.65	2 (13%)
6	MAN	B	504	5,4	11,11,12	0.58	0	15,15,17	1.32	2 (13%)
4	NAG	B	505	7,6	14,14,15	0.69	0	17,19,21	0.85	0
7	GAL	B	506	4	11,11,12	0.62	0	15,15,17	1.10	2 (13%)
6	MAN	B	507	5	11,11,12	0.53	0	15,15,17	1.73	3 (20%)
8	FUC	B	508	4	9,10,11	0.74	0	13,14,16	0.67	0

In the following table, the Chirals column lists the number of chiral outliers, the number of chiral centers analysed, the number of these observed in the model and the number defined in the Chemical Component Dictionary. Similar counts are reported in the Torsion and Rings columns. '-' means no outliers of that kind were identified.

Mol	Type	Chain	Res	Link	Chirals	Torsions	Rings
4	NAG	A	501	1,8,4	-	0/6/23/26	0/1/1/1
4	NAG	A	502	5,4	-	0/6/23/26	0/1/1/1
5	BMA	A	503	4,6	-	0/2/19/22	0/1/1/1
6	MAN	A	504	5,4	-	0/2/19/22	0/1/1/1
4	NAG	A	505	7,6	-	0/6/23/26	0/1/1/1
7	GAL	A	506	4	-	0/2/19/22	0/1/1/1
8	FUC	A	507	4	-	0/0/17/20	0/1/1/1
6	MAN	A	508	5	-	0/2/19/22	0/1/1/1
4	NAG	B	501	8,2,4	-	0/6/23/26	0/1/1/1
4	NAG	B	502	5,4	-	0/6/23/26	0/1/1/1
5	BMA	B	503	4,6	-	0/2/19/22	0/1/1/1
6	MAN	B	504	5,4	-	0/2/19/22	0/1/1/1
4	NAG	B	505	7,6	-	0/6/23/26	0/1/1/1
7	GAL	B	506	4	-	0/2/19/22	0/1/1/1
6	MAN	B	507	5	-	0/2/19/22	0/1/1/1
8	FUC	B	508	4	-	0/0/17/20	0/1/1/1

There are no bond length outliers.

All (23) bond angle outliers are listed below:

Mol	Chain	Res	Type	Atoms	Z	Observed(°)	Ideal(°)
6	B	504	MAN	O2-C2-C3	-2.76	104.80	110.19
4	B	502	NAG	O5-C1-C2	-2.60	107.94	111.52
4	A	502	NAG	O5-C1-C2	-2.40	108.21	111.52
6	A	508	MAN	C2-C3-C4	2.01	114.35	110.87
4	A	501	NAG	C1-O5-C5	2.27	115.31	112.19
6	B	507	MAN	O5-C5-C4	2.32	116.46	110.83
7	B	506	GAL	O5-C5-C6	2.38	110.91	107.15
7	A	506	GAL	O5-C5-C6	2.45	111.02	107.15
6	A	508	MAN	O5-C5-C4	2.48	116.86	110.83
6	A	504	MAN	C1-O5-C5	2.60	115.77	112.19
7	B	506	GAL	C1-C2-C3	2.74	113.12	109.66
6	B	504	MAN	C1-O5-C5	2.87	116.13	112.19
7	A	506	GAL	C1-C2-C3	2.91	113.34	109.66
4	A	502	NAG	C1-O5-C5	3.17	116.56	112.19
5	A	503	BMA	C1-C2-C3	3.20	113.71	109.66
6	B	507	MAN	C3-C4-C5	3.33	116.19	110.24
4	B	502	NAG	C1-O5-C5	3.41	116.87	112.19
6	A	508	MAN	C1-O5-C5	3.68	117.25	112.19
6	A	508	MAN	C3-C4-C5	3.87	117.17	110.24
5	B	503	BMA	C1-O5-C5	4.06	117.78	112.19
5	B	503	BMA	C1-C2-C3	4.20	114.97	109.66
6	B	507	MAN	C1-O5-C5	4.49	118.36	112.19
5	A	503	BMA	C1-O5-C5	4.82	118.81	112.19

There are no chirality outliers.

There are no torsion outliers.

There are no ring outliers.

No monomer is involved in short contacts.

## 5.7 Other polymers [i](#)

There are no such residues in this entry.

## 5.8 Polymer linkage issues [i](#)

There are no chain breaks in this entry.

## 6 Fit of model and data [i](#)

### 6.1 Protein, DNA and RNA chains [i](#)

In the following table, the column labelled '#RSRZ > 2' contains the number (and percentage) of RSRZ outliers, followed by percent RSRZ outliers for the chain as percentile scores relative to all X-ray entries and entries of similar resolution. The OWAB column contains the minimum, median, 95<sup>th</sup> percentile and maximum values of the occupancy-weighted average B-factor per residue. The column labelled 'Q < 0.9' lists the number of (and percentage) of residues with an average occupancy less than 0.9.

Mol	Chain	Analysed	<RSRZ>	#RSRZ>2	OWAB(Å <sup>2</sup> )	Q<0.9
1	A	208/227 (91%)	0.04	2 (0%) 82 86	18, 36, 53, 70	0
2	B	207/240 (86%)	-0.08	0 100 100	19, 34, 51, 60	0
3	C	13/13 (100%)	1.42	3 (23%) 0 1	36, 46, 61, 65	0
All	All	428/480 (89%)	0.02	5 (1%) 79 83	18, 36, 54, 70	0

All (5) RSRZ outliers are listed below:

Mol	Chain	Res	Type	RSRZ
3	C	4	TRP	2.9
1	A	298	SER	2.7
1	A	299	THR	2.4
3	C	2	CYS	2.4
3	C	7	GLY	2.1

### 6.2 Non-standard residues in protein, DNA, RNA chains [i](#)

There are no non-standard protein/DNA/RNA residues in this entry.

### 6.3 Carbohydrates [i](#)

There are no carbohydrates in this entry.

### 6.4 Ligands [i](#)

In the following table, the Atoms column lists the number of modelled atoms in the group and the number defined in the chemical component dictionary. The B-factors column lists the minimum, median, 95<sup>th</sup> percentile and maximum values of B factors of atoms in the group. The column labelled 'Q < 0.9' lists the number of atoms with occupancy less than 0.9.



Mol	Type	Chain	Res	Atoms	RSCC	RSR	B-factors( $\text{\AA}^2$ )	Q<0.9
7	GAL	B	506	11/12	0.80	0.31	73,86,96,97	0
7	GAL	A	506	11/12	0.83	0.26	74,83,86,86	0
6	MAN	B	507	11/12	0.84	0.15	48,65,73,76	0
8	FUC	A	507	10/11	0.87	0.20	49,57,62,62	0
6	MAN	A	508	11/12	0.87	0.23	56,75,84,85	0
4	NAG	B	505	14/15	0.90	0.17	38,52,72,72	0
6	MAN	A	504	11/12	0.91	0.11	45,52,57,59	0
8	FUC	B	508	10/11	0.92	0.15	53,57,61,64	0
5	BMA	A	503	11/12	0.92	0.11	39,46,52,66	0
4	NAG	A	505	14/15	0.93	0.16	43,51,63,64	0
4	NAG	B	501	14/15	0.94	0.11	38,46,54,55	0
5	BMA	B	503	11/12	0.94	0.12	39,42,54,54	0
4	NAG	A	502	14/15	0.94	0.17	44,50,60,61	0
6	MAN	B	504	11/12	0.94	0.11	40,44,56,59	0
4	NAG	A	501	14/15	0.95	0.17	48,53,60,66	0
4	NAG	B	502	14/15	0.96	0.12	35,38,48,51	0

## 6.5 Other polymers [\(i\)](#)

There are no such residues in this entry.