



# wwPDB X-ray Structure Validation Summary Report ⓘ

Sep 5, 2023 – 06:05 PM EDT

PDB ID : 4DQI  
Title : Ternary complex of Bacillus DNA Polymerase I Large Fragment, DNA duplex,  
and dCTP (paired with dG of template)  
Authors : Wang, W.; Beese, L.S.  
Deposited on : 2012-02-15  
Resolution : 1.69 Å (reported)

This is a wwPDB X-ray Structure Validation Summary Report for a publicly released PDB entry.

We welcome your comments at [validation@mail.wwpdb.org](mailto:validation@mail.wwpdb.org)

A user guide is available at

<https://www.wwpdb.org/validation/2017/XrayValidationReportHelp>

with specific help available everywhere you see the ⓘ symbol.

The types of validation reports are described at

<http://www.wwpdb.org/validation/2017/FAQs#types>.

---

The following versions of software and data (see [references ⓘ](#)) were used in the production of this report:

MolProbity : 4.02b-467  
Mogul : 1.8.5 (274361), CSD as541be (2020)  
Xtriage (Phenix) : 1.13  
EDS : 2.35  
buster-report : 1.1.7 (2018)  
Percentile statistics : 20191225.v01 (using entries in the PDB archive December 25th 2019)  
Refmac : 5.8.0158  
CCP4 : 7.0.044 (Gargrove)  
Ideal geometry (proteins) : Engh & Huber (2001)  
Ideal geometry (DNA, RNA) : Parkinson et al. (1996)  
Validation Pipeline (wwPDB-VP) : 2.35

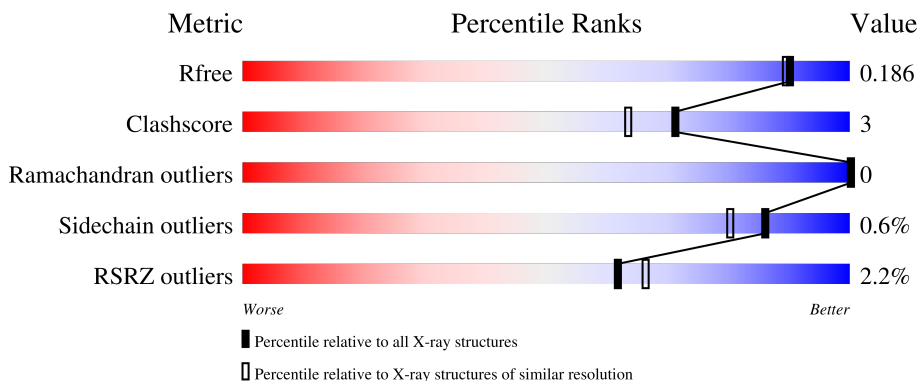
# 1 Overall quality at a glance

The following experimental techniques were used to determine the structure:

*X-RAY DIFFRACTION*

The reported resolution of this entry is 1.69 Å.

Percentile scores (ranging between 0-100) for global validation metrics of the entry are shown in the following graphic. The table shows the number of entries on which the scores are based.



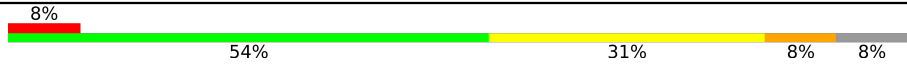
Metric	Whole archive (#Entries)	Similar resolution (#Entries, resolution range(Å))
$R_{free}$	130704	4298 (1.70-1.70)
Clashscore	141614	4695 (1.70-1.70)
Ramachandran outliers	138981	4610 (1.70-1.70)
Sidechain outliers	138945	4610 (1.70-1.70)
RSRZ outliers	127900	4222 (1.70-1.70)

The table below summarises the geometric issues observed across the polymeric chains and their fit to the electron density. The red, orange, yellow and green segments of the lower bar indicate the fraction of residues that contain outliers for  $\geq 3$ , 2, 1 and 0 types of geometric quality criteria respectively. A grey segment represents the fraction of residues that are not modelled. The numeric value for each fraction is indicated below the corresponding segment, with a dot representing fractions  $\leq 5\%$ . The upper red bar (where present) indicates the fraction of residues that have poor fit to the electron density. The numeric value is given above the bar.

Mol	Chain	Length	Quality of chain
1	A	592	
1	D	592	
2	B	9	
2	E	9	
3	C	13	

*Continued on next page...*

*Continued from previous page...*

Mol	Chain	Length	Quality of chain
3	F	13	 <p>8% 54% 31% 8% 8%</p>

## 2 Entry composition [i](#)

There are 7 unique types of molecules in this entry. The entry contains 22370 atoms, of which 10238 are hydrogens and 0 are deuteriums.

In the tables below, the ZeroOcc column contains the number of atoms modelled with zero occupancy, the AltConf column contains the number of residues with at least one atom in alternate conformation and the Trace column contains the number of residues modelled with at most 2 atoms.

- Molecule 1 is a protein called DNA polymerase I.

Mol	Chain	Residues	Atoms						ZeroOcc	AltConf	Trace
			Total	C	H	N	O	S			
1	A	579	9534	3001	4810	825	880	18	20	16	0
1	D	579	9750	3065	4924	841	903	17	0	39	0

There are 4 discrepancies between the modelled and reference sequences:

Chain	Residue	Modelled	Actual	Comment	Reference
A	598	ALA	ASP	engineered mutation	UNP Q5KWC1
A	823	HIS	ARG	SEE REMARK 999	UNP Q5KWC1
D	598	ALA	ASP	engineered mutation	UNP Q5KWC1
D	823	HIS	ARG	SEE REMARK 999	UNP Q5KWC1

- Molecule 2 is a DNA chain called DNA (5'-D(\*CP\*CP\*TP\*GP\*AP\*CP\*TP\*CP\*(DOC))-3').

Mol	Chain	Residues	Atoms						ZeroOcc	AltConf	Trace
			Total	C	H	N	O	P			
2	B	9	274	85	100	29	52	8	0	0	0
2	E	9	274	85	100	29	52	8	0	0	0

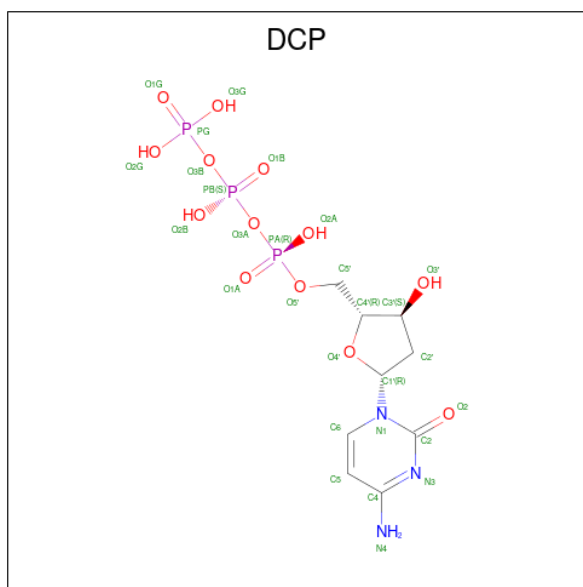
- Molecule 3 is a DNA chain called DNA (5'-D(\*C\*AP\*TP\*GP\*GP\*GP\*AP\*GP\*TP\*CP\*AP\*GP\*G)-3').

Mol	Chain	Residues	Atoms						ZeroOcc	AltConf	Trace
			Total	C	H	N	O	P			
3	C	12	385	119	134	52	69	11	0	0	0
3	F	12	385	119	134	52	69	11	0	0	0

- Molecule 4 is MAGNESIUM ION (three-letter code: MG) (formula: Mg).

Mol	Chain	Residues	Atoms	ZeroOcc	AltConf
4	A	1	Total Mg 1 1	0	0
4	D	1	Total Mg 1 1	0	0

- Molecule 5 is 2'-DEOXYCYTIDINE-5'-TRIPHOSPHATE (three-letter code: DCP) (formula: C<sub>9</sub>H<sub>16</sub>N<sub>3</sub>O<sub>13</sub>P<sub>3</sub>).



Mol	Chain	Residues	Atoms	ZeroOcc	AltConf
5	A	1	Total C H N O P 40 9 12 3 13 3	0	0
5	A	1	Total C H N O P 40 9 12 3 13 3	0	0
5	D	1	Total C H N O P 40 9 12 3 13 3	0	0

- Molecule 6 is SULFATE ION (three-letter code: SO4) (formula: O<sub>4</sub>S).



Mol	Chain	Residues	Atoms			ZeroOcc	AltConf
6	A	1	Total	O	S	0	0
			5	4	1		
6	D	1	Total	O	S	0	0
			5	4	1		

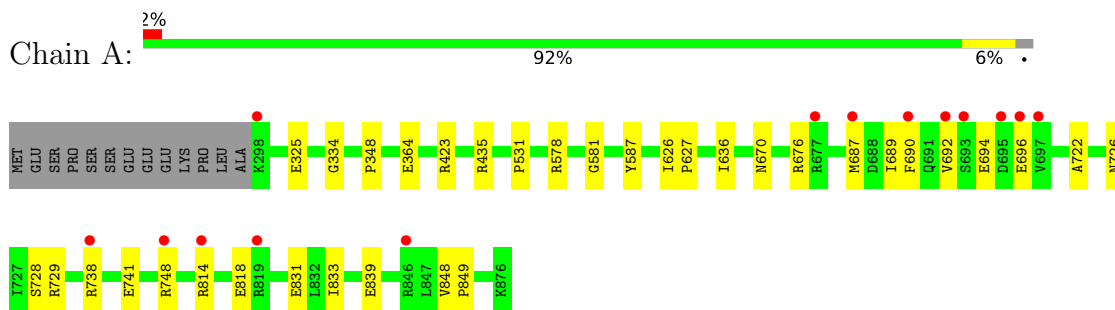
- Molecule 7 is water.

Mol	Chain	Residues	Atoms		ZeroOcc	AltConf
7	A	583	Total	O	0	0
			583	583		
7	D	820	Total	O	0	0
			820	820		
7	B	38	Total	O	0	0
			38	38		
7	C	77	Total	O	0	0
			77	77		
7	E	40	Total	O	0	0
			40	40		
7	F	78	Total	O	0	0
			78	78		

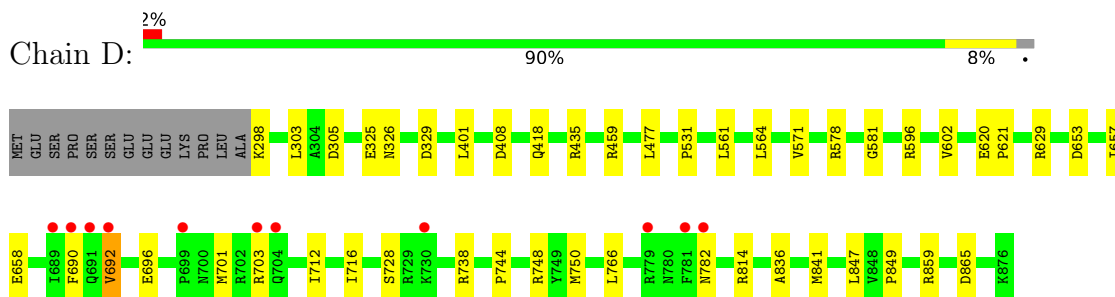
### 3 Residue-property plots [i](#)

These plots are drawn for all protein, RNA, DNA and oligosaccharide chains in the entry. The first graphic for a chain summarises the proportions of the various outlier classes displayed in the second graphic. The second graphic shows the sequence view annotated by issues in geometry and electron density. Residues are color-coded according to the number of geometric quality criteria for which they contain at least one outlier: green = 0, yellow = 1, orange = 2 and red = 3 or more. A red dot above a residue indicates a poor fit to the electron density ( $RSRZ > 2$ ). Stretches of 2 or more consecutive residues without any outlier are shown as a green connector. Residues present in the sample, but not in the model, are shown in grey.

- Molecule 1: DNA polymerase I



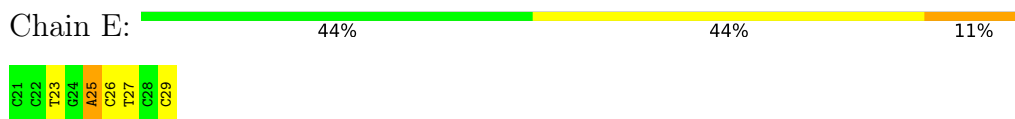
- Molecule 1: DNA polymerase I



- Molecule 2: DNA (5'-D(\*CP\*CP\*TP\*GP\*AP\*CP\*TP\*CP\*(DOC))-3')



- Molecule 2: DNA (5'-D(\*CP\*CP\*TP\*GP\*AP\*CP\*TP\*CP\*(DOC))-3')



- Molecule 3: DNA (5'-D(\*C\*AP\*TP\*GP\*GP\*GP\*AP\*GP\*TP\*CP\*AP\*GP\*G)-3')





- Molecule 3: DNA (5'-D(\*C\*AP\*TP\*GP\*GP\*GP\*AP\*GP\*TP\*CP\*AP\*GP\*G)-3')





## 4 Data and refinement statistics

Property	Value	Source
Space group	P 21 21 21	Depositor
Cell constants a, b, c, $\alpha$ , $\beta$ , $\gamma$	93.68Å 109.36Å 150.32Å 90.00° 90.00° 90.00°	Depositor
Resolution (Å)	28.77 – 1.69 47.22 – 1.69	Depositor EDS
% Data completeness (in resolution range)	86.0 (28.77-1.69) 86.0 (47.22-1.69)	Depositor EDS
$R_{merge}$	0.07	Depositor
$R_{sym}$	(Not available)	Depositor
$\langle I/\sigma(I) \rangle$ <sup>1</sup>	1.96 (at 1.69Å)	Xtrriage
Refinement program	PHENIX dev_1026	Depositor
R, $R_{free}$	0.158 , 0.185 0.158 , 0.186	Depositor DCC
$R_{free}$ test set	6645 reflections (4.48%)	wwPDB-VP
Wilson B-factor (Å <sup>2</sup> )	16.8	Xtrriage
Anisotropy	0.164	Xtrriage
Bulk solvent $k_{sol}$ (e/Å <sup>3</sup> ), $B_{sol}$ (Å <sup>2</sup> )	0.39 , 51.7	EDS
L-test for twinning <sup>2</sup>	$\langle  L  \rangle = 0.48$ , $\langle L^2 \rangle = 0.31$	Xtrriage
Estimated twinning fraction	No twinning to report.	Xtrriage
$F_o, F_c$ correlation	0.96	EDS
Total number of atoms	22370	wwPDB-VP
Average B, all atoms (Å <sup>2</sup> )	26.0	wwPDB-VP

Xtrriage's analysis on translational NCS is as follows: *The largest off-origin peak in the Patterson function is 2.96% of the height of the origin peak. No significant pseudotranslation is detected.*

<sup>1</sup>Intensities estimated from amplitudes.

<sup>2</sup>Theoretical values of  $\langle |L| \rangle$ ,  $\langle L^2 \rangle$  for acentric reflections are 0.5, 0.333 respectively for untwinned datasets, and 0.375, 0.2 for perfectly twinned datasets.

## 5 Model quality [i](#)

### 5.1 Standard geometry [i](#)

Bond lengths and bond angles in the following residue types are not validated in this section: DCP, DOC, SO4, MG

The Z score for a bond length (or angle) is the number of standard deviations the observed value is removed from the expected value. A bond length (or angle) with  $|Z| > 5$  is considered an outlier worth inspection. RMSZ is the root-mean-square of all Z scores of the bond lengths (or angles).

Mol	Chain	Bond lengths		Bond angles	
		RMSZ	# Z  >5	RMSZ	# Z  >5
1	A	0.45	0/4882	0.56	0/6594
1	D	0.57	0/5058	0.66	2/6838 (0.0%)
2	B	0.99	0/173	1.95	4/264 (1.5%)
2	E	1.26	0/173	2.15	9/264 (3.4%)
3	C	1.06	0/283	1.50	3/437 (0.7%)
3	F	1.09	0/283	1.74	5/437 (1.1%)
All	All	0.58	0/10852	0.80	23/14834 (0.2%)

There are no bond length outliers.

The worst 5 of 23 bond angle outliers are listed below:

Mol	Chain	Res	Type	Atoms	Z	Observed(°)	Ideal(°)
2	B	23	DT	O4'-C1'-N1	-9.85	101.10	108.00
2	B	26	DC	O4'-C1'-N1	8.89	114.23	108.00
2	E	25	DA	O5'-P-OP2	-7.95	98.55	105.70
2	E	23	DT	O4'-C1'-N1	-7.90	102.47	108.00
3	C	8	DT	O4'-C1'-N1	-7.86	102.50	108.00

There are no chirality outliers.

There are no planarity outliers.

### 5.2 Too-close contacts [i](#)

In the following table, the Non-H and H(model) columns list the number of non-hydrogen atoms and hydrogen atoms in the chain respectively. The H(added) column lists the number of hydrogen atoms added and optimized by MolProbity. The Clashes column lists the number of clashes within the asymmetric unit, whereas Symm-Clashes lists symmetry-related clashes.

Mol	Chain	Non-H	H(model)	H(added)	Clashes	Symm-Clashes
1	A	4724	4810	4737	28	0
1	D	4826	4924	4751	41	0
2	B	174	100	103	2	0
2	E	174	100	103	2	0
3	C	251	134	136	0	0
3	F	251	134	136	3	0
4	A	1	0	0	0	0
4	D	1	0	0	0	0
5	A	56	24	24	0	0
5	D	28	12	12	0	0
6	A	5	0	0	0	0
6	D	5	0	0	0	0
7	A	583	0	0	12	4
7	B	38	0	0	0	0
7	C	77	0	0	0	0
7	D	820	0	0	24	4
7	E	40	0	0	0	0
7	F	78	0	0	3	0
All	All	12132	10238	10002	72	4

The all-atom clashscore is defined as the number of clashes found per 1000 atoms (including hydrogen atoms). The all-atom clashscore for this structure is 3.

The worst 5 of 72 close contacts within the same asymmetric unit are listed below, sorted by their clash magnitude.

Atom-1	Atom-2	Interatomic distance (Å)	Clash overlap (Å)
3:F:2:DT:O4	7:F:169:HOH:O	1.83	0.97
1:A:839:GLU:OE1	7:A:1424:HOH:O	1.94	0.86
3:F:2:DT:C4	7:F:169:HOH:O	2.30	0.83
1:D:298:LYS:NZ	7:D:1768:HOH:O	1.96	0.79
1:D:750:MET:HG3	7:D:1764:HOH:O	1.80	0.79

All (4) symmetry-related close contacts are listed below. The label for Atom-2 includes the symmetry operator and encoded unit-cell translations to be applied.

Atom-1	Atom-2	Interatomic distance (Å)	Clash overlap (Å)
7:A:1155:HOH:O	7:D:1340:HOH:O[2_745]	1.76	0.44
7:A:1571:HOH:O	7:D:1794:HOH:O[2_745]	1.92	0.28
7:A:1155:HOH:O	7:D:1189:HOH:O[2_745]	2.05	0.15
7:A:1481:HOH:O	7:D:1696:HOH:O[2_745]	2.06	0.14

## 5.3 Torsion angles [i](#)

### 5.3.1 Protein backbone [i](#)

In the following table, the Percentiles column shows the percent Ramachandran outliers of the chain as a percentile score with respect to all X-ray entries followed by that with respect to entries of similar resolution.

The Analysed column shows the number of residues for which the backbone conformation was analysed, and the total number of residues.

Mol	Chain	Analysed	Favoured	Allowed	Outliers	Percentiles	
1	A	595/592 (100%)	582 (98%)	13 (2%)	0	100	100
1	D	617/592 (104%)	604 (98%)	13 (2%)	0	100	100
All	All	1212/1184 (102%)	1186 (98%)	26 (2%)	0	100	100

There are no Ramachandran outliers to report.

### 5.3.2 Protein sidechains [i](#)

In the following table, the Percentiles column shows the percent sidechain outliers of the chain as a percentile score with respect to all X-ray entries followed by that with respect to entries of similar resolution.

The Analysed column shows the number of residues for which the sidechain conformation was analysed, and the total number of residues.

Mol	Chain	Analysed	Rotameric	Outliers	Percentiles	
1	A	510/507 (101%)	508 (100%)	2 (0%)	91	87
1	D	534/507 (105%)	530 (99%)	4 (1%)	84	77
All	All	1044/1014 (103%)	1038 (99%)	6 (1%)	86	80

5 of 6 residues with a non-rotameric sidechain are listed below:

Mol	Chain	Res	Type
1	D	477	LEU
1	D	692	VAL
1	D	728	SER
1	A	728	SER
1	A	726	ASN

Sometimes sidechains can be flipped to improve hydrogen bonding and reduce clashes. All (1) such sidechains are listed below:

Mol	Chain	Res	Type
1	D	502	GLN

### 5.3.3 RNA [i](#)

There are no RNA molecules in this entry.

## 5.4 Non-standard residues in protein, DNA, RNA chains [i](#)

2 non-standard protein/DNA/RNA residues are modelled in this entry.

In the following table, the Counts columns list the number of bonds (or angles) for which Mogul statistics could be retrieved, the number of bonds (or angles) that are observed in the model and the number of bonds (or angles) that are defined in the Chemical Component Dictionary. The Link column lists molecule types, if any, to which the group is linked. The Z score for a bond length (or angle) is the number of standard deviations the observed value is removed from the expected value. A bond length (or angle) with  $|Z| > 2$  is considered an outlier worth inspection. RMSZ is the root-mean-square of all Z scores of the bond lengths (or angles).

Mol	Type	Chain	Res	Link	Bond lengths			Bond angles		
					Counts	RMSZ	# Z  > 2	Counts	RMSZ	# Z  > 2
2	DOC	B	29	3,2	16,19,20	0.57	0	20,26,29	0.71	1 (5%)
2	DOC	E	29	3,2	16,19,20	0.51	0	20,26,29	1.24	2 (10%)

In the following table, the Chirals column lists the number of chiral outliers, the number of chiral centers analysed, the number of these observed in the model and the number defined in the Chemical Component Dictionary. Similar counts are reported in the Torsion and Rings columns. '-' means no outliers of that kind were identified.

Mol	Type	Chain	Res	Link	Chirals	Torsions	Rings
2	DOC	B	29	3,2	-	0/7/18/19	0/2/2/2
2	DOC	E	29	3,2	-	0/7/18/19	0/2/2/2

There are no bond length outliers.

All (3) bond angle outliers are listed below:

Mol	Chain	Res	Type	Atoms	Z	Observed(°)	Ideal(°)
2	E	29	DOC	O4'-C1'-C2'	3.33	110.28	106.67
2	B	29	DOC	C2'-C1'-N1	2.33	116.81	112.40
2	E	29	DOC	C3'-C2'-C1'	-2.16	100.28	102.78

There are no chirality outliers.

There are no torsion outliers.

There are no ring outliers.

No monomer is involved in short contacts.

## 5.5 Carbohydrates [i](#)

There are no monosaccharides in this entry.

## 5.6 Ligand geometry [i](#)

Of 7 ligands modelled in this entry, 2 are monoatomic - leaving 5 for Mogul analysis.

In the following table, the Counts columns list the number of bonds (or angles) for which Mogul statistics could be retrieved, the number of bonds (or angles) that are observed in the model and the number of bonds (or angles) that are defined in the Chemical Component Dictionary. The Link column lists molecule types, if any, to which the group is linked. The Z score for a bond length (or angle) is the number of standard deviations the observed value is removed from the expected value. A bond length (or angle) with  $|Z| > 2$  is considered an outlier worth inspection. RMSZ is the root-mean-square of all Z scores of the bond lengths (or angles).

Mol	Type	Chain	Res	Link	Bond lengths			Bond angles		
					Counts	RMSZ	# Z  > 2	Counts	RMSZ	# Z  > 2
5	DCP	A	903	-	25,29,29	1.71	6 (24%)	37,45,45	1.18	4 (10%)
6	SO4	D	903	-	4,4,4	0.22	0	6,6,6	0.53	0
5	DCP	A	902	4	25,29,29	1.68	5 (20%)	37,45,45	1.31	4 (10%)
6	SO4	A	904	-	4,4,4	0.16	0	6,6,6	0.13	0
5	DCP	D	902	4	25,29,29	1.53	6 (24%)	37,45,45	1.34	3 (8%)

In the following table, the Chirals column lists the number of chiral outliers, the number of chiral centers analysed, the number of these observed in the model and the number defined in the Chemical Component Dictionary. Similar counts are reported in the Torsion and Rings columns. '-' means no outliers of that kind were identified.

Mol	Type	Chain	Res	Link	Chirals	Torsions	Rings
5	DCP	A	902	4	-	6/22/34/34	0/2/2/2
5	DCP	A	903	-	-	0/22/34/34	0/2/2/2
5	DCP	D	902	4	-	6/22/34/34	0/2/2/2

The worst 5 of 17 bond length outliers are listed below:

Mol	Chain	Res	Type	Atoms	Z	Observed(Å)	Ideal(Å)
5	A	902	DCP	O2-C2	4.16	1.31	1.23

*Continued on next page...*

*Continued from previous page...*

Mol	Chain	Res	Type	Atoms	Z	Observed(Å)	Ideal(Å)
5	A	903	DCP	C2'-C3'	-4.14	1.41	1.52
5	A	902	DCP	C2'-C3'	-3.62	1.43	1.52
5	D	902	DCP	C2'-C3'	-3.16	1.44	1.52
5	A	902	DCP	PB-O2B	-3.03	1.41	1.55

The worst 5 of 11 bond angle outliers are listed below:

Mol	Chain	Res	Type	Atoms	Z	Observed(°)	Ideal(°)
5	A	902	DCP	O4'-C1'-N1	3.93	114.88	107.86
5	A	903	DCP	PB-O3A-PA	-3.64	120.34	132.83
5	D	902	DCP	O4'-C1'-N1	3.61	114.31	107.86
5	A	903	DCP	O4'-C1'-N1	2.74	112.76	107.86
5	A	903	DCP	PB-O3B-PG	-2.70	123.56	132.83

There are no chirality outliers.

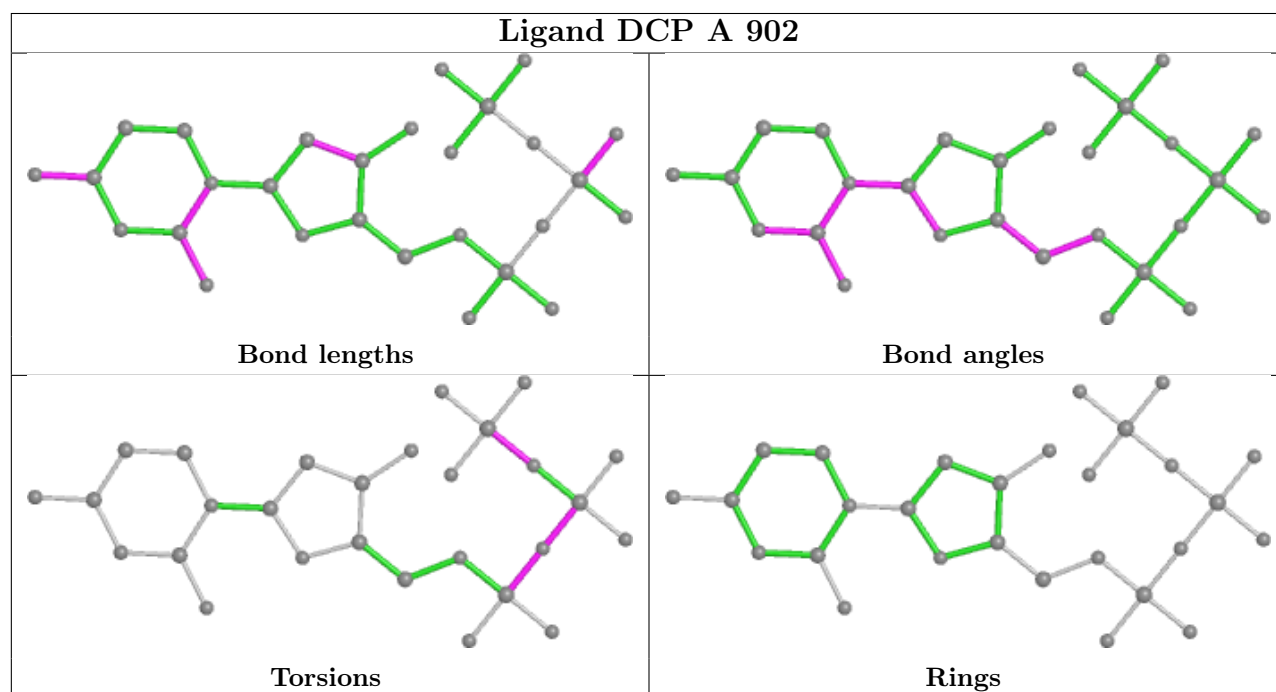
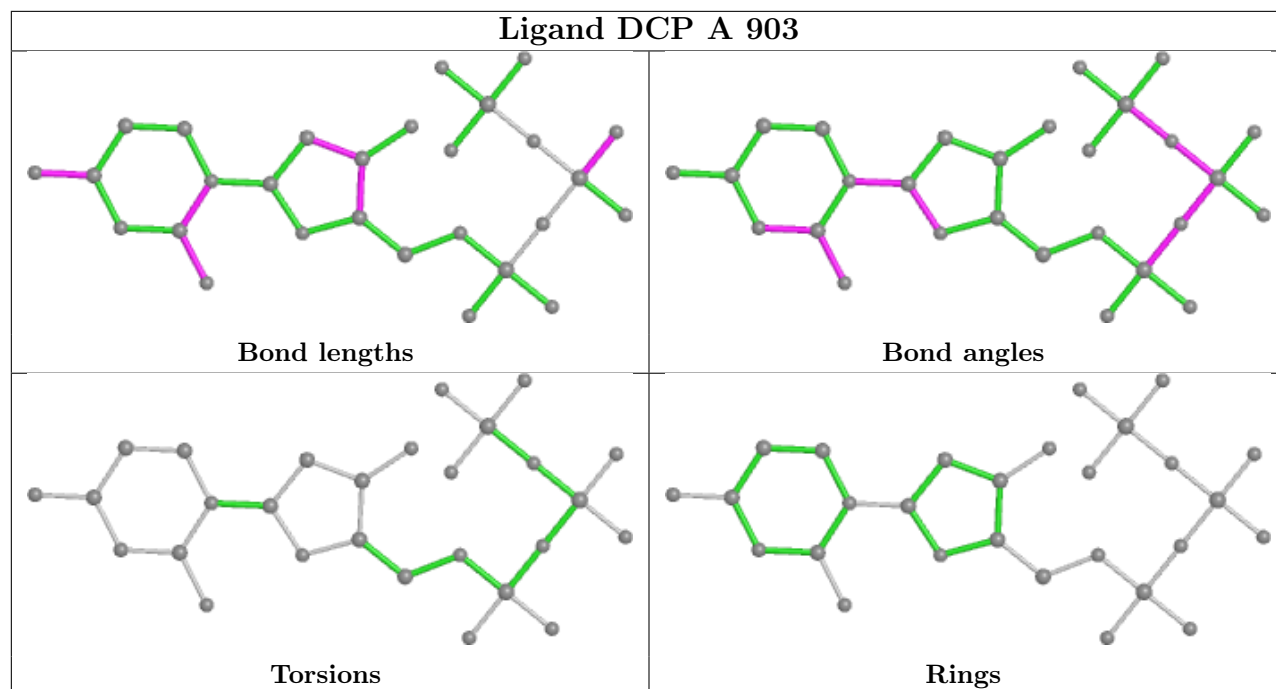
5 of 12 torsion outliers are listed below:

Mol	Chain	Res	Type	Atoms
5	A	902	DCP	PB-O3B-PG-O2G
5	D	902	DCP	PB-O3B-PG-O2G
5	D	902	DCP	PB-O3B-PG-O3G
5	A	902	DCP	PB-O3A-PA-O1A
5	A	902	DCP	PA-O3A-PB-O1B

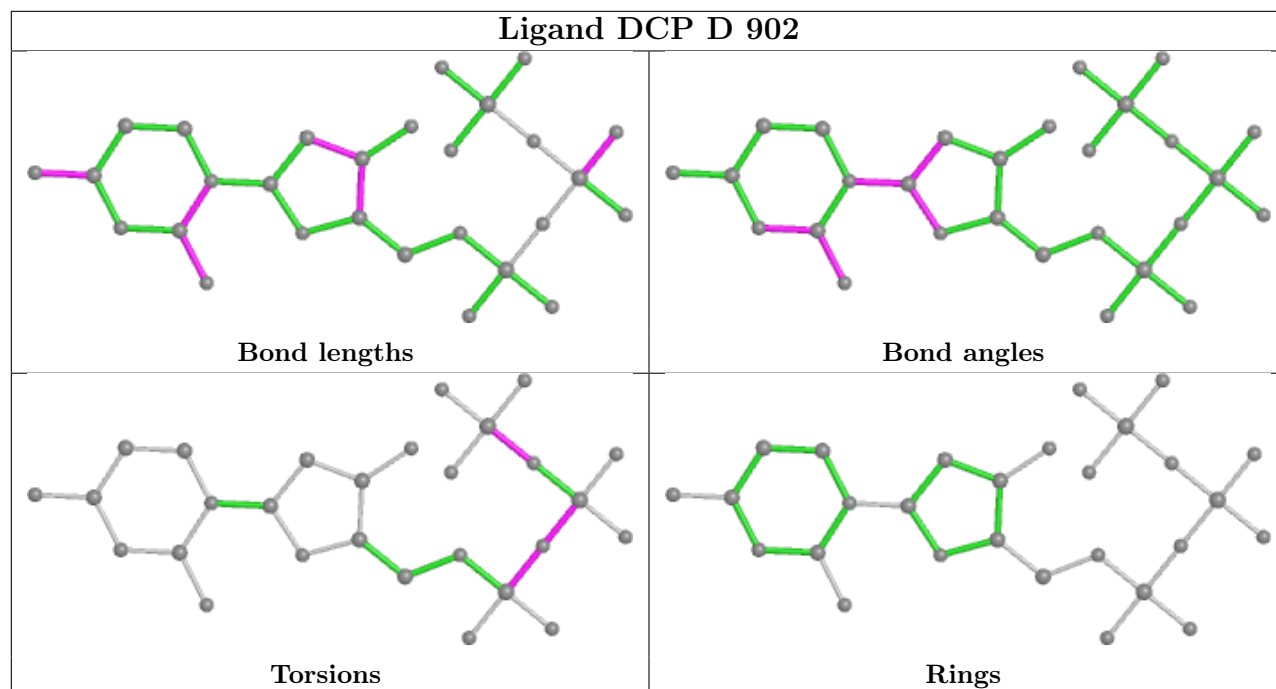
There are no ring outliers.

No monomer is involved in short contacts.

The following is a two-dimensional graphical depiction of Mogul quality analysis of bond lengths, bond angles, torsion angles, and ring geometry for all instances of the Ligand of Interest. In addition, ligands with molecular weight > 250 and outliers as shown on the validation Tables will also be included. For torsion angles, if less than 5% of the Mogul distribution of torsion angles is within 10 degrees of the torsion angle in question, then that torsion angle is considered an outlier. Any bond that is central to one or more torsion angles identified as an outlier by Mogul will be highlighted in the graph. For rings, the root-mean-square deviation (RMSD) between the ring in question and similar rings identified by Mogul is calculated over all ring torsion angles. If the average RMSD is greater than 60 degrees and the minimal RMSD between the ring in question and any Mogul-identified rings is also greater than 60 degrees, then that ring is considered an outlier. The outliers are highlighted in purple. The color gray indicates Mogul did not find sufficient equivalents in the CSD to analyse the geometry.







## 5.7 Other polymers [i](#)

There are no such residues in this entry.

## 5.8 Polymer linkage issues [i](#)

There are no chain breaks in this entry.

## 6 Fit of model and data [i](#)

### 6.1 Protein, DNA and RNA chains [i](#)

In the following table, the column labelled ‘#RSRZ > 2’ contains the number (and percentage) of RSRZ outliers, followed by percent RSRZ outliers for the chain as percentile scores relative to all X-ray entries and entries of similar resolution. The OWAB column contains the minimum, median, 95<sup>th</sup> percentile and maximum values of the occupancy-weighted average B-factor per residue. The column labelled ‘Q < 0.9’ lists the number of (and percentage) of residues with an average occupancy less than 0.9.

Mol	Chain	Analysed	<RSRZ>	#RSRZ>2	OWAB(Å <sup>2</sup> )	Q<0.9
1	A	579/592 (97%)	-0.08	14 (2%) 59 63	13, 27, 51, 80	0
1	D	579/592 (97%)	-0.25	11 (1%) 66 70	6, 16, 36, 51	0
2	B	8/9 (88%)	-0.45	0 100 100	16, 21, 31, 38	0
2	E	8/9 (88%)	-0.57	0 100 100	10, 15, 26, 35	0
3	C	12/13 (92%)	-0.36	0 100 100	14, 18, 50, 63	0
3	F	12/13 (92%)	-0.33	1 (8%) 11 13	9, 15, 44, 56	0
All	All	1198/1228 (97%)	-0.17	26 (2%) 62 66	6, 22, 45, 80	0

The worst 5 of 26 RSRZ outliers are listed below:

Mol	Chain	Res	Type	RSRZ
1	A	298	LYS	6.4
1	A	695	ASP	4.2
1	A	693	SER	3.8
1	D	689	ILE	3.6
1	A	697	VAL	3.5

### 6.2 Non-standard residues in protein, DNA, RNA chains [i](#)

In the following table, the Atoms column lists the number of modelled atoms in the group and the number defined in the chemical component dictionary. The B-factors column lists the minimum, median, 95<sup>th</sup> percentile and maximum values of B factors of atoms in the group. The column labelled ‘Q < 0.9’ lists the number of atoms with occupancy less than 0.9.

Mol	Type	Chain	Res	Atoms	RSCC	RSR	B-factors(Å <sup>2</sup> )	Q<0.9
2	DOC	B	29	18/19	0.98	0.07	16,17,20,22	0
2	DOC	E	29	18/19	0.99	0.09	8,10,15,18	0

### 6.3 Carbohydrates [i](#)

There are no monosaccharides in this entry.

### 6.4 Ligands [i](#)

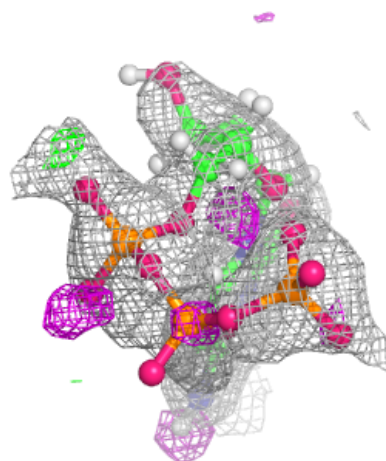
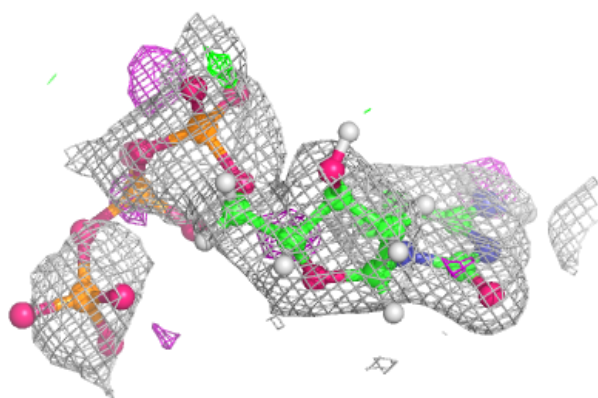
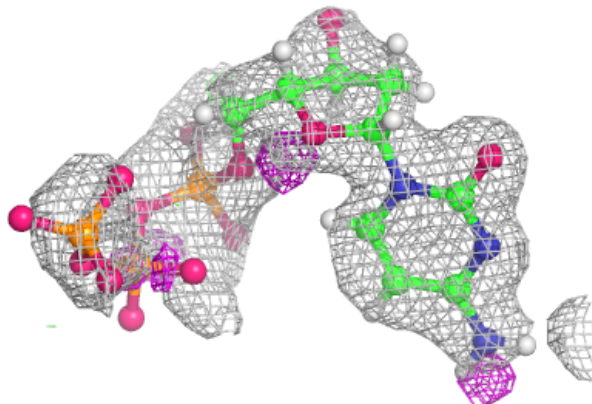
In the following table, the Atoms column lists the number of modelled atoms in the group and the number defined in the chemical component dictionary. The B-factors column lists the minimum, median, 95<sup>th</sup> percentile and maximum values of B factors of atoms in the group. The column labelled 'Q< 0.9' lists the number of atoms with occupancy less than 0.9.

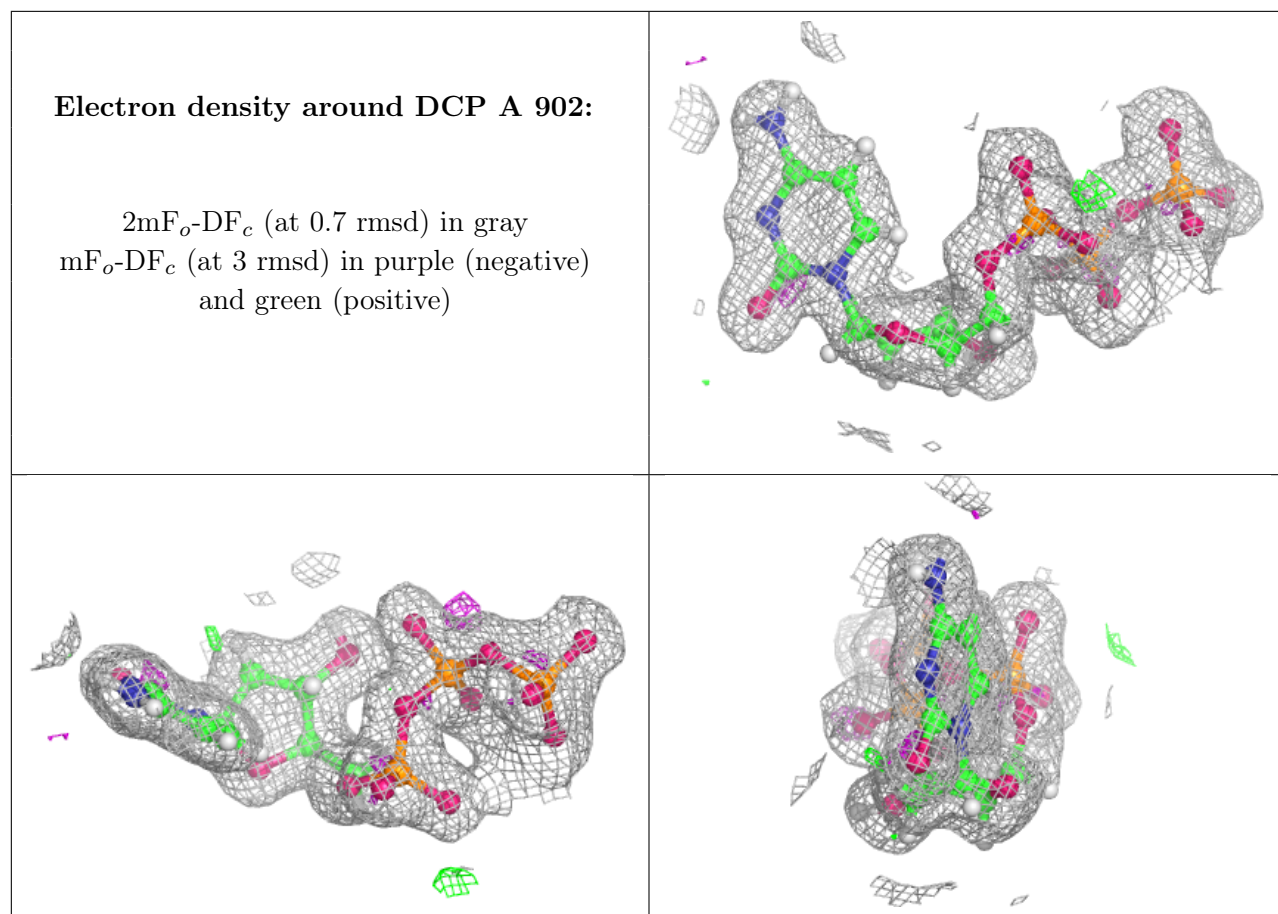
Mol	Type	Chain	Res	Atoms	RSCC	RSR	B-factors(Å <sup>2</sup> )	Q<0.9
5	DCP	A	903	28/28	0.87	0.14	24,50,119,120	0
6	SO4	A	904	5/5	0.95	0.14	40,57,58,65	0
5	DCP	A	902	28/28	0.97	0.07	14,18,25,35	0
5	DCP	D	902	28/28	0.98	0.08	7,13,24,27	0
4	MG	D	901	1/1	0.98	0.10	17,17,17,17	0
6	SO4	D	903	5/5	0.98	0.08	26,29,44,47	0
4	MG	A	901	1/1	0.99	0.09	23,23,23,23	0

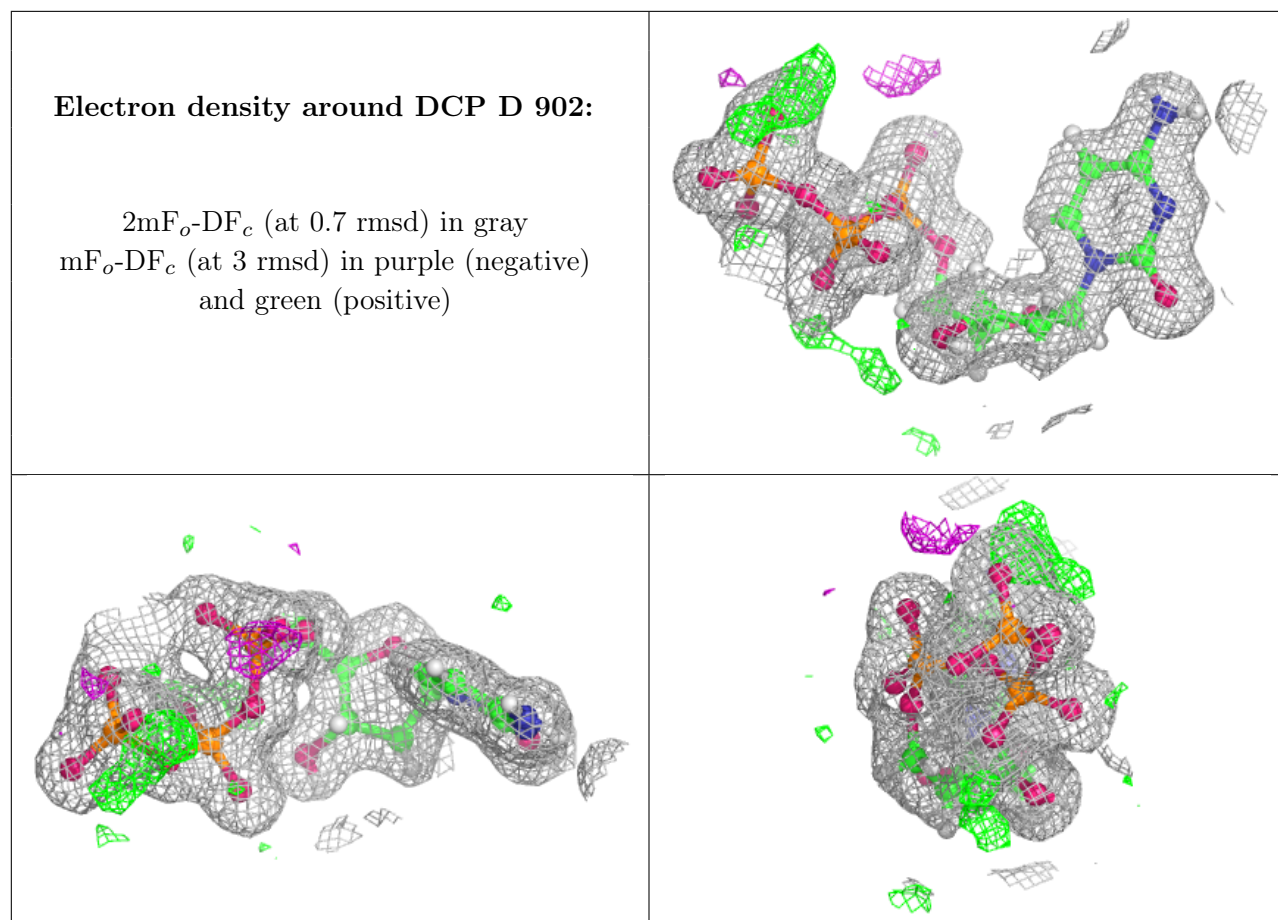
The following is a graphical depiction of the model fit to experimental electron density of all instances of the Ligand of Interest. In addition, ligands with molecular weight > 250 and outliers as shown on the geometry validation Tables will also be included. Each fit is shown from different orientation to approximate a three-dimensional view.

**Electron density around DCP A 903:**

$2mF_o-DF_c$  (at 0.7 rmsd) in gray  
 $mF_o-DF_c$  (at 3 rmsd) in purple (negative)  
and green (positive)







## 6.5 Other polymers [i](#)

There are no such residues in this entry.