



# Full wwPDB X-ray Structure Validation Report ⓘ

Sep 5, 2023 – 04:38 PM EDT

PDB ID : 4DQO  
Title : Crystal Structure of PG16 Fab in Complex with V1V2 Region from HIV-1 strain ZM109  
Authors : Pancera, M.; McLellan, J.S.; Kwong, P.D.  
Deposited on : 2012-02-16  
Resolution : 2.44 Å(reported)

This is a Full wwPDB X-ray Structure Validation Report for a publicly released PDB entry.

We welcome your comments at [validation@mail.wwpdb.org](mailto:validation@mail.wwpdb.org)

A user guide is available at

<https://www.wwpdb.org/validation/2017/XrayValidationReportHelp>

with specific help available everywhere you see the ⓘ symbol.

The types of validation reports are described at

<http://www.wwpdb.org/validation/2017/FAQs#types>.

---

The following versions of software and data (see [references ⓘ](#)) were used in the production of this report:

MolProbity : 4.02b-467  
Mogul : 1.8.5 (274361), CSD as541be (2020)  
Xtriage (Phenix) : 1.13  
EDS : 2.35  
Percentile statistics : 20191225.v01 (using entries in the PDB archive December 25th 2019)  
Refmac : 5.8.0158  
CCP4 : 7.0.044 (Gargrove)  
Ideal geometry (proteins) : Engh & Huber (2001)  
Ideal geometry (DNA, RNA) : Parkinson et al. (1996)  
Validation Pipeline (wwPDB-VP) : 2.35

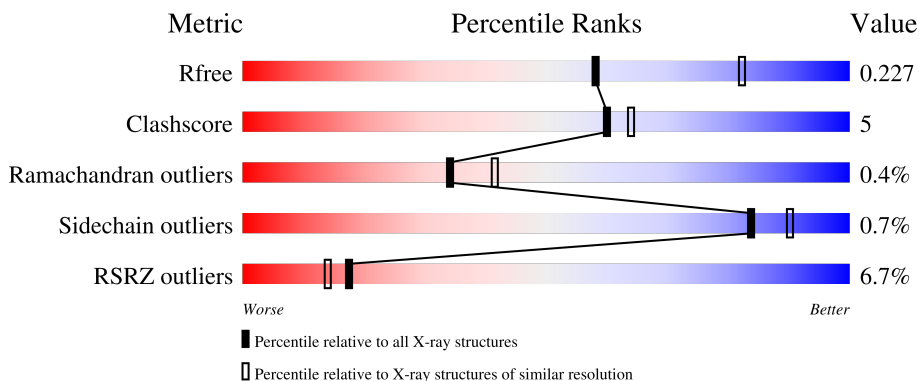
# 1 Overall quality at a glance i

The following experimental techniques were used to determine the structure:

*X-RAY DIFFRACTION*

The reported resolution of this entry is 2.44 Å.

Percentile scores (ranging between 0-100) for global validation metrics of the entry are shown in the following graphic. The table shows the number of entries on which the scores are based.



Metric	Whole archive (#Entries)	Similar resolution (#Entries, resolution range(Å))
$R_{free}$	130704	1564 (2.46-2.42)
Clashscore	141614	1631 (2.46-2.42)
Ramachandran outliers	138981	1617 (2.46-2.42)
Sidechain outliers	138945	1617 (2.46-2.42)
RSRZ outliers	127900	1547 (2.46-2.42)

The table below summarises the geometric issues observed across the polymeric chains and their fit to the electron density. The red, orange, yellow and green segments of the lower bar indicate the fraction of residues that contain outliers for  $\geq 3$ , 2, 1 and 0 types of geometric quality criteria respectively. A grey segment represents the fraction of residues that are not modelled. The numeric value for each fraction is indicated below the corresponding segment, with a dot representing fractions  $\leq 5\%$ . The upper red bar (where present) indicates the fraction of residues that have poor fit to the electron density. The numeric value is given above the bar.

Mol	Chain	Length	Quality of chain
1	H	246	
2	L	216	
3	C	124	
4	A	7	
5	B	10	

## 2 Entry composition [i](#)

There are 6 unique types of molecules in this entry. The entry contains 8606 atoms, of which 4138 are hydrogens and 0 are deuteriums.

In the tables below, the ZeroOcc column contains the number of atoms modelled with zero occupancy, the AltConf column contains the number of residues with at least one atom in alternate conformation and the Trace column contains the number of residues modelled with at most 2 atoms.

- Molecule 1 is a protein called PG16 Fab Heavy Chain.

Mol	Chain	Residues	Atoms					ZeroOcc	AltConf	Trace	
			Total	C	H	N	O				S
1	H	240	3598	1162	1759	309	357	11	0	0	0

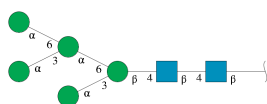
- Molecule 2 is a protein called PG16 Fab Light Chain.

Mol	Chain	Residues	Atoms					ZeroOcc	AltConf	Trace	
			Total	C	H	N	O				S
2	L	214	3114	983	1532	268	326	5	0	0	0

- Molecule 3 is a protein called 1FD6-V1V2 scaffold ZM109 HIV-1 strain.

Mol	Chain	Residues	Atoms					ZeroOcc	AltConf	Trace	
			Total	C	H	N	O				S
3	C	88	1358	433	670	115	136	4	0	0	0

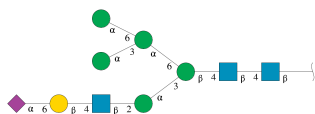
- Molecule 4 is an oligosaccharide called alpha-D-mannopyranose-(1-3)-[alpha-D-mannopyranose-(1-6)]alpha-D-mannopyranose-(1-6)-[alpha-D-mannopyranose-(1-3)]beta-D-mannopyranose-(1-4)-2-acetamido-2-deoxy-beta-D-glucopyranose-(1-4)-2-acetamido-2-deoxy-beta-D-glucopyranose.



Mol	Chain	Residues	Atoms					ZeroOcc	AltConf	Trace
			Total	C	H	N	O			
4	A	7	153	46	70	2	35	0	0	0

- Molecule 5 is an oligosaccharide called N-acetyl-alpha-neuraminic acid-(2-6)-beta-D-galactopyranose-(1-4)-2-acetamido-2-deoxy-beta-D-glucopyranose-(1-2)-alpha-D-mannopyranose-(1-3)-[alpha-D-mannopyranose-(1-3)-[alpha-D-mannopyranose-(1-6)]alpha-D-mannopyranose-(1-6)]beta-D-mannopyranose-(1-4)-2-acetamido-2-deoxy-beta-D-glucopyranose-(1-4)-2-aceta

mido-2-deoxy-beta-D-glucopyranose.



Mol	Chain	Residues	Atoms					ZeroOcc	AltConf	Trace
			Total	C	H	N	O			
5	B	10	235	71	107	4	53	0	0	0

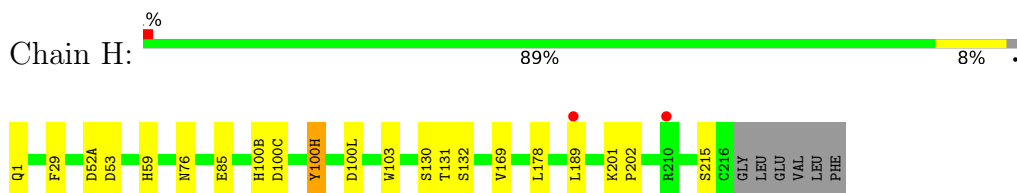
- Molecule 6 is water.

Mol	Chain	Residues	Atoms		ZeroOcc	AltConf
6	H	59	Total	O	0	0
			59	59		
6	L	75	Total	O	0	0
			75	75		
6	C	14	Total	O	0	0
			14	14		

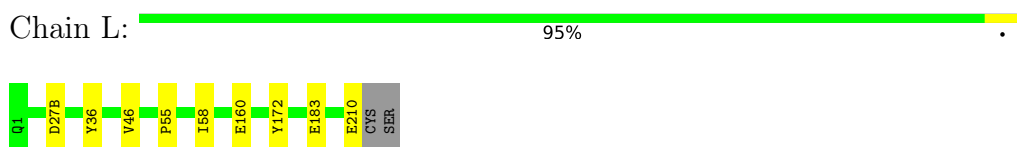
### 3 Residue-property plots [i](#)

These plots are drawn for all protein, RNA, DNA and oligosaccharide chains in the entry. The first graphic for a chain summarises the proportions of the various outlier classes displayed in the second graphic. The second graphic shows the sequence view annotated by issues in geometry and electron density. Residues are color-coded according to the number of geometric quality criteria for which they contain at least one outlier: green = 0, yellow = 1, orange = 2 and red = 3 or more. A red dot above a residue indicates a poor fit to the electron density ( $RSRZ > 2$ ). Stretches of 2 or more consecutive residues without any outlier are shown as a green connector. Residues present in the sample, but not in the model, are shown in grey.

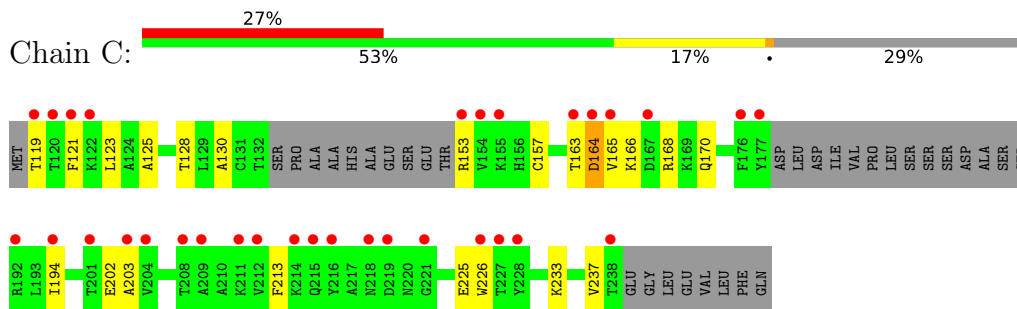
- Molecule 1: PG16 Fab Heavy Chain



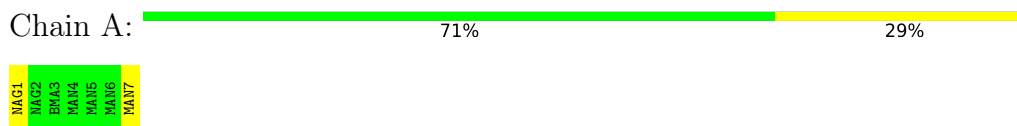
- Molecule 2: PG16 Fab Light Chain



- Molecule 3: 1FD6-V1V2 scaffold ZM109 HIV-1 strain



- Molecule 4: alpha-D-mannopyranose-(1-3)-[alpha-D-mannopyranose-(1-6)]alpha-D-mannopyranose-(1-6)-[alpha-D-mannopyranose-(1-3)]beta-D-mannopyranose-(1-4)-2-acetamido-2-deoxy-beta-D-glucopyranose-(1-4)-2-acetamido-2-deoxy-beta-D-glucopyranose



- Molecule 5: N-acetyl-alpha-neuraminic acid-(2-6)-beta-D-galactopyranose-(1-4)-2-acetamido-2-deoxy-beta-D-glucopyranose-(1-2)-alpha-D-mannopyranose-(1-3)-[alpha-D-mannopyranose-(1-3)-[alpha-D-mannopyranose-(1-6)]alpha-D-mannopyranose-(1-6)]beta-D-mannopyranose-(1-4)-2-acetamido-2-deoxy-beta-D-glucopyranose-(1-4)-2-acetamido-2-deoxy-beta-D-glucopyranose



## 4 Data and refinement statistics

Property	Value	Source
Space group	C 2 2 21	Depositor
Cell constants a, b, c, $\alpha$ , $\beta$ , $\gamma$	81.05Å 207.56Å 87.62Å 90.00° 90.00° 90.00°	Depositor
Resolution (Å)	45.11 – 2.44 45.11 – 2.44	Depositor EDS
% Data completeness (in resolution range)	90.3 (45.11-2.44) 90.4 (45.11-2.44)	Depositor EDS
$R_{merge}$	0.17	Depositor
$R_{sym}$	0.18	Depositor
$\langle I/\sigma(I) \rangle$ <sup>1</sup>	2.23 (at 2.45Å)	Xtrriage
Refinement program	PHENIX (phenix.refine: 1.7.2_869)	Depositor
R, $R_{free}$	0.201 , 0.230 0.200 , 0.227	Depositor DCC
$R_{free}$ test set	1271 reflections (5.02%)	wwPDB-VP
Wilson B-factor (Å <sup>2</sup> )	38.7	Xtrriage
Anisotropy	0.626	Xtrriage
Bulk solvent $k_{sol}$ (e/Å <sup>3</sup> ), $B_{sol}$ (Å <sup>2</sup> )	0.35 , 47.2	EDS
L-test for twinning <sup>2</sup>	$\langle  L  \rangle = 0.49$ , $\langle L^2 \rangle = 0.32$	Xtrriage
Estimated twinning fraction	No twinning to report.	Xtrriage
$F_o, F_c$ correlation	0.94	EDS
Total number of atoms	8606	wwPDB-VP
Average B, all atoms (Å <sup>2</sup> )	64.0	wwPDB-VP

Xtrriage's analysis on translational NCS is as follows: *The largest off-origin peak in the Patterson function is 4.45% of the height of the origin peak. No significant pseudotranslation is detected.*

<sup>1</sup>Intensities estimated from amplitudes.

<sup>2</sup>Theoretical values of  $\langle |L| \rangle$ ,  $\langle L^2 \rangle$  for acentric reflections are 0.5, 0.333 respectively for untwinned datasets, and 0.375, 0.2 for perfectly twinned datasets.

## 5 Model quality

### 5.1 Standard geometry

Bond lengths and bond angles in the following residue types are not validated in this section: TYS, SIA, MAN, PCA, GAL, BMA, NAG

The Z score for a bond length (or angle) is the number of standard deviations the observed value is removed from the expected value. A bond length (or angle) with  $|Z| > 5$  is considered an outlier worth inspection. RMSZ is the root-mean-square of all Z scores of the bond lengths (or angles).

Mol	Chain	Bond lengths		Bond angles	
		RMSZ	# Z  >5	RMSZ	# Z  >5
1	H	0.22	0/1865	0.41	0/2535
2	L	0.23	0/1619	0.42	0/2204
3	C	0.22	0/697	0.43	0/944
All	All	0.23	0/4181	0.42	0/5683

There are no bond length outliers.

There are no bond angle outliers.

There are no chirality outliers.

There are no planarity outliers.

### 5.2 Too-close contacts

In the following table, the Non-H and H(model) columns list the number of non-hydrogen atoms and hydrogen atoms in the chain respectively. The H(added) column lists the number of hydrogen atoms added and optimized by MolProbity. The Clashes column lists the number of clashes within the asymmetric unit, whereas Symm-Clashes lists symmetry-related clashes.

Mol	Chain	Non-H	H(model)	H(added)	Clashes	Symm-Clashes
1	H	1839	1759	1761	15	0
2	L	1582	1532	1532	7	0
3	C	688	670	670	19	0
4	A	83	70	70	2	0
5	B	128	107	107	0	0
6	C	14	0	0	2	0
6	H	59	0	0	3	1
6	L	75	0	0	2	1
All	All	4468	4138	4140	39	1

The all-atom clashscore is defined as the number of clashes found per 1000 atoms (including



hydrogen atoms). The all-atom clashscore for this structure is 5.

All (39) close contacts within the same asymmetric unit are listed below, sorted by their clash magnitude.

Atom-1	Atom-2	Interatomic distance (Å)	Clash overlap (Å)
1:H:130:SER:OG	1:H:132:SER:O	1.99	0.79
3:C:119:THR:N	3:C:203:ALA:O	2.19	0.76
1:H:103:TRP:O	6:H:331:HOH:O	2.08	0.72
3:C:153:ARG:O	6:C:414:HOH:O	2.10	0.68
1:H:189:LEU:O	6:H:348:HOH:O	2.11	0.67
3:C:202:GLU:N	3:C:202:GLU:OE1	2.28	0.67
3:C:164:ASP:OD1	3:C:165:VAL:N	2.30	0.65
6:C:411:HOH:O	4:A:7:MAN:O2	2.17	0.60
2:L:160:GLU:OE2	6:L:373:HOH:O	2.17	0.57
3:C:163:THR:O	3:C:164:ASP:CB	2.52	0.57
1:H:100(H):TYS:O3	3:C:168:ARG:NH1	2.38	0.57
3:C:226:TRP:CD2	3:C:237:VAL:HG12	2.42	0.54
1:H:169:VAL:HG21	2:L:160:GLU:HB3	1.89	0.54
1:H:52(A):ASP:OD1	1:H:53:ASP:N	2.41	0.53
2:L:183:GLU:N	2:L:183:GLU:OE1	2.42	0.53
1:H:85:GLU:N	1:H:85:GLU:OE2	2.43	0.52
3:C:128:THR:HA	3:C:194:ILE:HD13	1.92	0.52
1:H:201:LYS:N	1:H:202:PRO:CD	2.75	0.49
3:C:121:PHE:CD1	3:C:233:LYS:HD3	2.47	0.49
3:C:226:TRP:CE3	3:C:237:VAL:HG12	2.47	0.49
1:H:178:LEU:C	1:H:178:LEU:HD12	2.34	0.49
3:C:128:THR:HG22	4:A:1:NAG:H81	1.94	0.48
2:L:36:TYR:CE2	2:L:46:VAL:HG12	2.48	0.48
3:C:163:THR:O	3:C:164:ASP:HB3	2.13	0.48
3:C:163:THR:HG21	3:C:170:GLN:HB3	1.95	0.48
2:L:36:TYR:CE2	2:L:46:VAL:CG1	2.97	0.47
1:H:29:PHE:CD2	1:H:76:ASN:HA	2.49	0.47
3:C:123:LEU:HD22	3:C:213:PHE:CD1	2.51	0.46
1:H:100(B):HIS:O	1:H:100(C):ASP:HB2	2.17	0.45
3:C:125:ALA:HA	3:C:237:VAL:HG22	1.99	0.45
1:H:130:SER:O	1:H:131:THR:C	2.53	0.45
3:C:163:THR:O	3:C:164:ASP:CG	2.56	0.43
1:H:100(L):ASP:OD1	3:C:168:ARG:NH2	2.52	0.43
1:H:59:HIS:O	6:H:306:HOH:O	2.22	0.41
1:H:130:SER:CB	1:H:132:SER:O	2.69	0.41
3:C:130:ALA:O	3:C:157:CYS:HA	2.20	0.41
2:L:172:TYR:OH	6:L:366:HOH:O	2.22	0.40
3:C:225:GLU:O	3:C:237:VAL:HA	2.21	0.40

*Continued on next page...*

Continued from previous page...

Atom-1	Atom-2	Interatomic distance (Å)	Clash overlap (Å)
2:L:55:PRO:HG2	2:L:58:ILE:CG1	2.52	0.40

All (1) symmetry-related close contacts are listed below. The label for Atom-2 includes the symmetry operator and encoded unit-cell translations to be applied.

Atom-1	Atom-2	Interatomic distance (Å)	Clash overlap (Å)
6:H:336:HOH:O	6:L:342:HOH:O[6_544]	1.79	0.41

## 5.3 Torsion angles [i](#)

### 5.3.1 Protein backbone [i](#)

In the following table, the Percentiles column shows the percent Ramachandran outliers of the chain as a percentile score with respect to all X-ray entries followed by that with respect to entries of similar resolution.

The Analysed column shows the number of residues for which the backbone conformation was analysed, and the total number of residues.

Mol	Chain	Analysed	Favoured	Allowed	Outliers	Percentiles	
1	H	237/246 (96%)	230 (97%)	6 (2%)	1 (0%)	34	41
2	L	212/216 (98%)	203 (96%)	9 (4%)	0	100	100
3	C	82/124 (66%)	72 (88%)	9 (11%)	1 (1%)	13	13
All	All	531/586 (91%)	505 (95%)	24 (4%)	2 (0%)	34	41

All (2) Ramachandran outliers are listed below:

Mol	Chain	Res	Type
3	C	164	ASP
1	H	215	SER

### 5.3.2 Protein sidechains [i](#)

In the following table, the Percentiles column shows the percent sidechain outliers of the chain as a percentile score with respect to all X-ray entries followed by that with respect to entries of similar resolution.

The Analysed column shows the number of residues for which the sidechain conformation was analysed, and the total number of residues.

Mol	Chain	Analysed	Rotameric	Outliers	Percentiles	
1	H	202/207 (98%)	202 (100%)	0	100	100
2	L	181/183 (99%)	179 (99%)	2 (1%)	73	83
3	C	75/105 (71%)	74 (99%)	1 (1%)	69	80
All	All	458/495 (92%)	455 (99%)	3 (1%)	84	90

All (3) residues with a non-rotameric sidechain are listed below:

Mol	Chain	Res	Type
2	L	27(B)	ASP
2	L	210	GLU
3	C	166	LYS

Sometimes sidechains can be flipped to improve hydrogen bonding and reduce clashes. There are no such sidechains identified.

### 5.3.3 RNA [i](#)

There are no RNA molecules in this entry.

## 5.4 Non-standard residues in protein, DNA, RNA chains [i](#)

2 non-standard protein/DNA/RNA residues are modelled in this entry.

In the following table, the Counts columns list the number of bonds (or angles) for which Mogul statistics could be retrieved, the number of bonds (or angles) that are observed in the model and the number of bonds (or angles) that are defined in the Chemical Component Dictionary. The Link column lists molecule types, if any, to which the group is linked. The Z score for a bond length (or angle) is the number of standard deviations the observed value is removed from the expected value. A bond length (or angle) with  $|Z| > 2$  is considered an outlier worth inspection. RMSZ is the root-mean-square of all Z scores of the bond lengths (or angles).

Mol	Type	Chain	Res	Link	Bond lengths			Bond angles		
					Counts	RMSZ	# Z  > 2	Counts	RMSZ	# Z  > 2
1	PCA	H	1	1	7,8,9	1.80	1 (14%)	9,10,12	2.11	5 (55%)
1	TYS	H	100(H)	1	15,16,17	1.12	2 (13%)	18,22,24	0.55	0

In the following table, the Chirals column lists the number of chiral outliers, the number of chiral centers analysed, the number of these observed in the model and the number defined in the Chemical Component Dictionary. Similar counts are reported in the Torsion and Rings columns. '-' means no outliers of that kind were identified.

Mol	Type	Chain	Res	Link	Chirals	Torsions	Rings
1	PCA	H	1	1	-	0/0/11/13	0/1/1/1
1	TYS	H	100(H)	1	-	3/10/11/13	0/1/1/1

All (3) bond length outliers are listed below:

Mol	Chain	Res	Type	Atoms	Z	Observed(Å)	Ideal(Å)
1	H	1	PCA	CD-N	4.65	1.46	1.34
1	H	100(H)	TYS	OH-CZ	-2.52	1.38	1.42
1	H	100(H)	TYS	OH-S	2.27	1.61	1.58

All (5) bond angle outliers are listed below:

Mol	Chain	Res	Type	Atoms	Z	Observed(°)	Ideal(°)
1	H	1	PCA	CA-N-CD	-2.98	103.37	113.58
1	H	1	PCA	OE-CD-CG	-2.94	121.64	126.76
1	H	1	PCA	CB-CA-C	-2.70	108.99	112.70
1	H	1	PCA	CB-CA-N	2.52	110.54	103.30
1	H	1	PCA	CG-CD-N	2.30	114.34	108.39

There are no chirality outliers.

All (3) torsion outliers are listed below:

Mol	Chain	Res	Type	Atoms
1	H	100(H)	TYS	CZ-OH-S-O1
1	H	100(H)	TYS	CZ-OH-S-O3
1	H	100(H)	TYS	CZ-OH-S-O2

There are no ring outliers.

1 monomer is involved in 1 short contact:

Mol	Chain	Res	Type	Clashes	Symm-Clashes
1	H	100(H)	TYS	1	0

## 5.5 Carbohydrates [i](#)

17 monosaccharides are modelled in this entry.

In the following table, the Counts columns list the number of bonds (or angles) for which Mogul statistics could be retrieved, the number of bonds (or angles) that are observed in the model and the number of bonds (or angles) that are defined in the Chemical Component Dictionary. The Link column lists molecule types, if any, to which the group is linked. The Z score for a bond

length (or angle) is the number of standard deviations the observed value is removed from the expected value. A bond length (or angle) with  $|Z| > 2$  is considered an outlier worth inspection. RMSZ is the root-mean-square of all Z scores of the bond lengths (or angles).

Mol	Type	Chain	Res	Link	Bond lengths			Bond angles		
					Counts	RMSZ	# Z  > 2	Counts	RMSZ	# Z  > 2
4	NAG	A	1	3,4	14,14,15	0.53	0	17,19,21	0.70	0
4	NAG	A	2	4	14,14,15	0.53	0	17,19,21	0.64	0
4	BMA	A	3	4	11,11,12	0.67	0	15,15,17	0.75	0
4	MAN	A	4	4	11,11,12	0.70	0	15,15,17	0.85	0
4	MAN	A	5	4	11,11,12	0.64	0	15,15,17	0.84	0
4	MAN	A	6	4	11,11,12	0.70	0	15,15,17	0.88	0
4	MAN	A	7	4	11,11,12	0.67	0	15,15,17	0.68	0
5	NAG	B	1	3,5	14,14,15	0.56	0	17,19,21	0.80	0
5	MAN	B	10	5	11,11,12	0.62	0	15,15,17	0.94	1 (6%)
5	NAG	B	2	5	14,14,15	0.54	0	17,19,21	0.87	0
5	BMA	B	3	5	11,11,12	0.66	0	15,15,17	0.79	0
5	MAN	B	4	5	11,11,12	0.60	0	15,15,17	1.01	1 (6%)
5	NAG	B	5	5	14,14,15	0.62	0	17,19,21	0.84	0
5	GAL	B	6	5	11,11,12	0.72	0	15,15,17	0.56	0
5	SIA	B	7	5	20,20,21	0.63	0	24,28,31	1.18	2 (8%)
5	MAN	B	8	5	11,11,12	0.73	0	15,15,17	1.27	2 (13%)
5	MAN	B	9	5	11,11,12	0.69	0	15,15,17	0.61	0

In the following table, the Chirals column lists the number of chiral outliers, the number of chiral centers analysed, the number of these observed in the model and the number defined in the Chemical Component Dictionary. Similar counts are reported in the Torsion and Rings columns. '-' means no outliers of that kind were identified.

Mol	Type	Chain	Res	Link	Chirals	Torsions	Rings
4	NAG	A	1	3,4	-	1/6/23/26	0/1/1/1
4	NAG	A	2	4	-	0/6/23/26	0/1/1/1
4	BMA	A	3	4	-	0/2/19/22	0/1/1/1
4	MAN	A	4	4	-	0/2/19/22	0/1/1/1
4	MAN	A	5	4	-	0/2/19/22	0/1/1/1
4	MAN	A	6	4	-	0/2/19/22	0/1/1/1
4	MAN	A	7	4	-	0/2/19/22	0/1/1/1
5	NAG	B	1	3,5	-	2/6/23/26	0/1/1/1
5	MAN	B	10	5	-	0/2/19/22	0/1/1/1
5	NAG	B	2	5	-	2/6/23/26	0/1/1/1
5	BMA	B	3	5	-	0/2/19/22	0/1/1/1
5	MAN	B	4	5	-	0/2/19/22	0/1/1/1
5	NAG	B	5	5	-	0/6/23/26	0/1/1/1

Continued on next page...

Continued from previous page...

Mol	Type	Chain	Res	Link	Chirals	Torsions	Rings
5	GAL	B	6	5	-	0/2/19/22	0/1/1/1
5	SIA	B	7	5	-	2/18/34/38	0/1/1/1
5	MAN	B	8	5	-	1/2/19/22	0/1/1/1
5	MAN	B	9	5	-	0/2/19/22	0/1/1/1

There are no bond length outliers.

All (6) bond angle outliers are listed below:

Mol	Chain	Res	Type	Atoms	Z	Observed(°)	Ideal(°)
5	B	7	SIA	O6-C2-C3	2.93	114.49	110.46
5	B	7	SIA	C6-O6-C2	2.83	117.39	111.34
5	B	8	MAN	C3-C4-C5	2.54	114.76	110.24
5	B	10	MAN	O5-C1-C2	-2.26	107.28	110.77
5	B	8	MAN	O5-C1-C2	-2.22	107.35	110.77
5	B	4	MAN	C2-C3-C4	-2.10	107.27	110.89

There are no chirality outliers.

All (8) torsion outliers are listed below:

Mol	Chain	Res	Type	Atoms
5	B	1	NAG	C8-C7-N2-C2
5	B	1	NAG	O7-C7-N2-C2
5	B	2	NAG	O5-C5-C6-O6
5	B	2	NAG	C4-C5-C6-O6
5	B	8	MAN	O5-C5-C6-O6
5	B	7	SIA	O8-C8-C9-O9
4	A	1	NAG	C8-C7-N2-C2
5	B	7	SIA	C6-C7-C8-O8

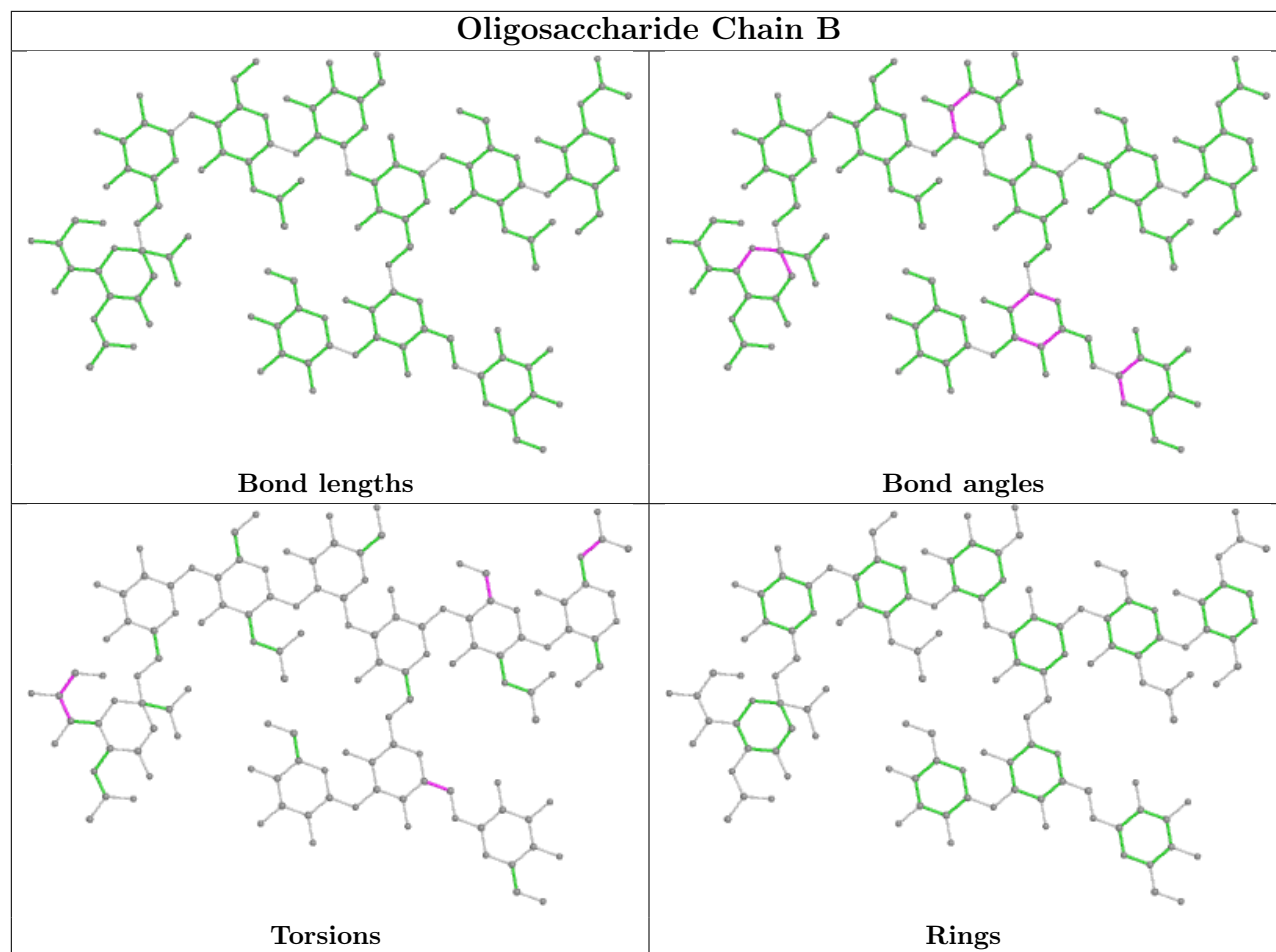
There are no ring outliers.

2 monomers are involved in 2 short contacts:

Mol	Chain	Res	Type	Clashes	Symm-Clashes
4	A	7	MAN	1	0
4	A	1	NAG	1	0

The following is a two-dimensional graphical depiction of Mogul quality analysis of bond lengths, bond angles, torsion angles, and ring geometry for oligosaccharide.





## 5.6 Ligand geometry [i](#)

There are no ligands in this entry.

## 5.7 Other polymers [i](#)

There are no such residues in this entry.

## 5.8 Polymer linkage issues [i](#)

There are no chain breaks in this entry.



## 6 Fit of model and data

### 6.1 Protein, DNA and RNA chains

In the following table, the column labelled '#RSRZ > 2' contains the number (and percentage) of RSRZ outliers, followed by percent RSRZ outliers for the chain as percentile scores relative to all X-ray entries and entries of similar resolution. The OWAB column contains the minimum, median, 95<sup>th</sup> percentile and maximum values of the occupancy-weighted average B-factor per residue. The column labelled 'Q < 0.9' lists the number of (and percentage) of residues with an average occupancy less than 0.9.

Mol	Chain	Analysed	<RSRZ>	#RSRZ>2	OWAB(Å <sup>2</sup> )	Q<0.9
1	H	238/246 (96%)	-0.07	2 (0%) 86 85	24, 48, 85, 123	0
2	L	214/216 (99%)	-0.11	0 100 100	24, 40, 84, 110	0
3	C	88/124 (70%)	1.63	34 (38%) 0 0	55, 107, 156, 182	0
All	All	540/586 (92%)	0.19	36 (6%) 17 14	24, 49, 124, 182	0

All (36) RSRZ outliers are listed below:

Mol	Chain	Res	Type	RSRZ
3	C	208	THR	7.2
3	C	201	THR	4.9
3	C	216	TYR	4.6
3	C	215	GLN	4.3
3	C	218	ASN	4.0
3	C	204	VAL	3.9
3	C	209	ALA	3.9
3	C	203	ALA	3.8
3	C	194	ILE	3.7
3	C	221	GLY	3.6
3	C	119	THR	3.5
3	C	120	THR	3.5
3	C	153	ARG	3.1
3	C	121	PHE	3.0
3	C	191	TYR	2.9
3	C	211	LYS	2.9
3	C	190	LEU	2.9
3	C	214	LYS	2.8
3	C	177	TYR	2.8
3	C	228	TYR	2.7
3	C	212	VAL	2.5
3	C	163	THR	2.5
3	C	122	LYS	2.5

*Continued on next page...*

*Continued from previous page...*

Mol	Chain	Res	Type	RSRZ
3	C	164	ASP	2.5
3	C	167	ASP	2.5
3	C	227	THR	2.4
3	C	165	VAL	2.4
3	C	154	VAL	2.4
3	C	219	ASP	2.4
3	C	155	LYS	2.3
3	C	192	ARG	2.3
3	C	238	THR	2.2
1	H	189	LEU	2.1
1	H	210	ARG	2.0
3	C	226	TRP	2.0
3	C	176	PHE	2.0

## 6.2 Non-standard residues in protein, DNA, RNA chains [i](#)

In the following table, the Atoms column lists the number of modelled atoms in the group and the number defined in the chemical component dictionary. The B-factors column lists the minimum, median, 95<sup>th</sup> percentile and maximum values of B factors of atoms in the group. The column labelled 'Q< 0.9' lists the number of atoms with occupancy less than 0.9.

Mol	Type	Chain	Res	Atoms	RSCC	RSR	B-factors( $\text{\AA}^2$ )	Q<0.9
1	PCA	H	1	8/9	0.86	0.29	74,107,128,128	0
1	TYS	H	100(H)	16/17	0.94	0.16	51,69,96,101	0

## 6.3 Carbohydrates [i](#)

In the following table, the Atoms column lists the number of modelled atoms in the group and the number defined in the chemical component dictionary. The B-factors column lists the minimum, median, 95<sup>th</sup> percentile and maximum values of B factors of atoms in the group. The column labelled 'Q< 0.9' lists the number of atoms with occupancy less than 0.9.

Mol	Type	Chain	Res	Atoms	RSCC	RSR	B-factors( $\text{\AA}^2$ )	Q<0.9
5	MAN	B	10	11/12	0.85	0.22	103,112,133,136	0
5	MAN	B	9	11/12	0.87	0.15	93,104,124,132	0
4	MAN	A	7	11/12	0.89	0.11	82,99,128,134	0
5	NAG	B	2	14/15	0.90	0.17	74,90,128,128	0
5	MAN	B	8	11/12	0.90	0.15	73,86,107,107	0
5	SIA	B	7	20/21	0.94	0.18	39,50,67,77	0
4	NAG	A	1	14/15	0.94	0.12	55,66,82,82	0
4	NAG	A	2	14/15	0.95	0.14	47,60,79,80	0

*Continued on next page...*

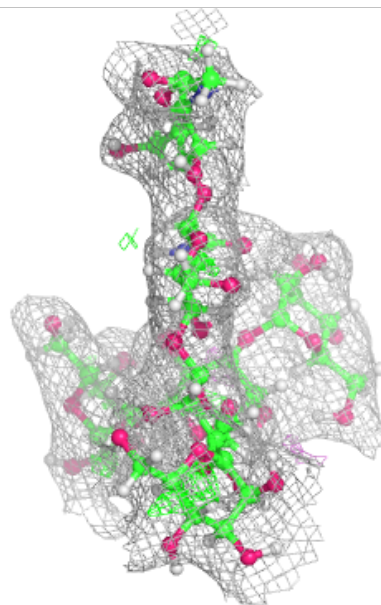
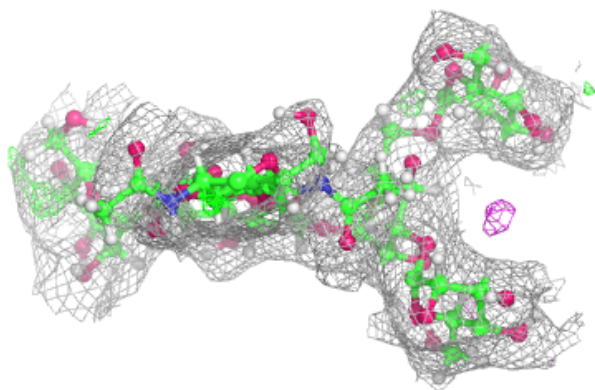
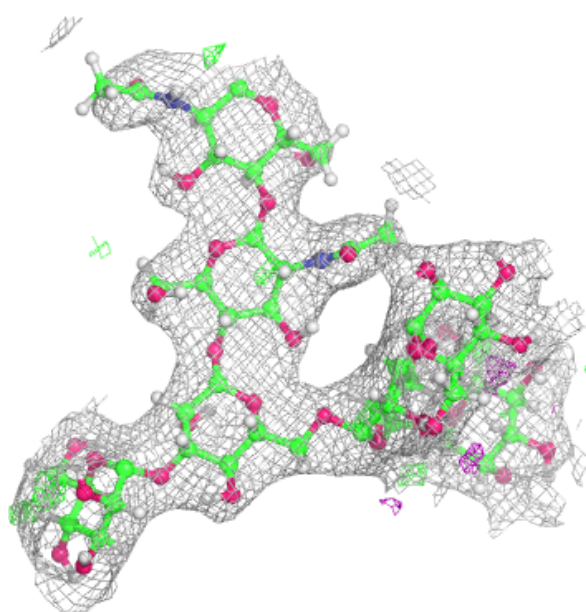
*Continued from previous page...*

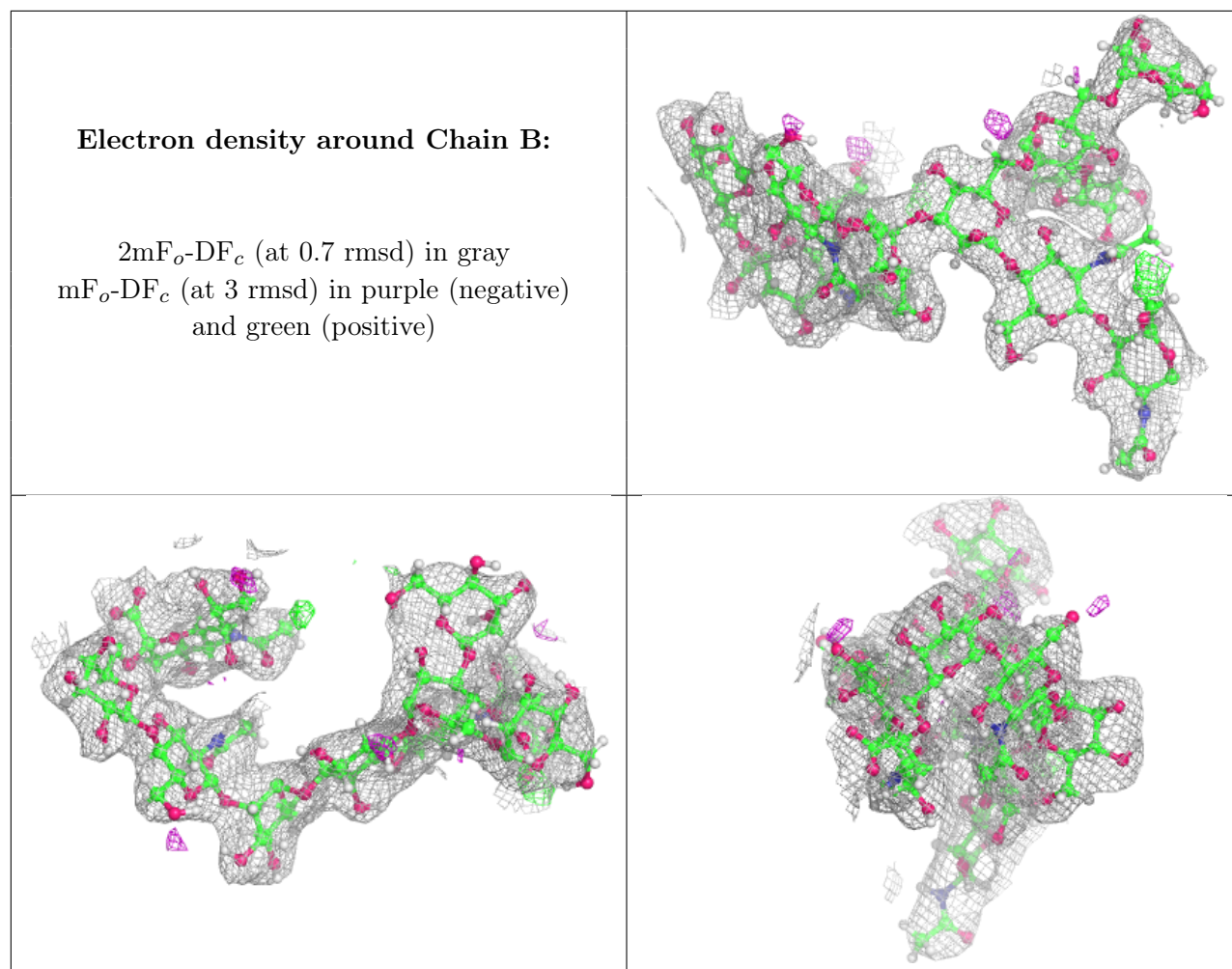
<b>Mol</b>	<b>Type</b>	<b>Chain</b>	<b>Res</b>	<b>Atoms</b>	<b>RSCC</b>	<b>RSR</b>	<b>B-factors(<math>\text{\AA}^2</math>)</b>	<b>Q&lt;0.9</b>
5	NAG	B	1	14/15	0.95	0.12	55,76,100,104	0
4	BMA	A	3	11/12	0.95	0.09	56,71,86,87	0
5	NAG	B	5	14/15	0.95	0.21	42,55,78,93	0
5	BMA	B	3	11/12	0.96	0.13	51,67,91,91	0
5	GAL	B	6	11/12	0.96	0.18	38,45,54,58	0
4	MAN	A	4	11/12	0.97	0.15	42,50,60,60	0
5	MAN	B	4	11/12	0.97	0.14	46,52,63,64	0
4	MAN	A	5	11/12	0.97	0.12	46,50,59,64	0
4	MAN	A	6	11/12	0.97	0.14	44,51,58,64	0

The following is a graphical depiction of the model fit to experimental electron density for oligosaccharide. Each fit is shown from different orientation to approximate a three-dimensional view.

**Electron density around Chain A:**

$2mF_o-DF_c$  (at 0.7 rmsd) in gray  
 $mF_o-DF_c$  (at 3 rmsd) in purple (negative)  
and green (positive)





## 6.4 Ligands [i](#)

There are no ligands in this entry.

## 6.5 Other polymers [i](#)

There are no such residues in this entry.