



# Full wwPDB X-ray Structure Validation Report ⓘ

Aug 2, 2023 – 12:45 PM EDT

PDB ID : 1DTU  
Title : BACILLUS CIRCULANS STRAIN 251 CYCLODEXTRIN GLYCOSYL-TRANSFERASE: A MUTANT Y89D/S146P COMPLEXED TO AN HEX-ASACCHARIDE INHIBITOR  
Authors : Uitdehaag, J.C.M.; Kalk, K.H.; Dijkstra, B.W.  
Deposited on : 2000-01-13  
Resolution : 2.40 Å(reported)

This is a Full wwPDB X-ray Structure Validation Report for a publicly released PDB entry.

We welcome your comments at [validation@mail.wwpdb.org](mailto:validation@mail.wwpdb.org)

A user guide is available at

<https://www.wwpdb.org/validation/2017/XrayValidationReportHelp>

with specific help available everywhere you see the ⓘ symbol.

The types of validation reports are described at

<http://www.wwpdb.org/validation/2017/FAQs#types>.

---

The following versions of software and data (see [references ⓘ](#)) were used in the production of this report:

MolProbity : 4.02b-467  
Mogul : 1.8.5 (274361), CSD as541be (2020)  
Xtriage (Phenix) : 1.13  
EDS : 2.34  
Percentile statistics : 20191225.v01 (using entries in the PDB archive December 25th 2019)  
Refmac : 5.8.0158  
CCP4 : 7.0.044 (Gargrove)  
Ideal geometry (proteins) : Engh & Huber (2001)  
Ideal geometry (DNA, RNA) : Parkinson et al. (1996)  
Validation Pipeline (wwPDB-VP) : 2.34

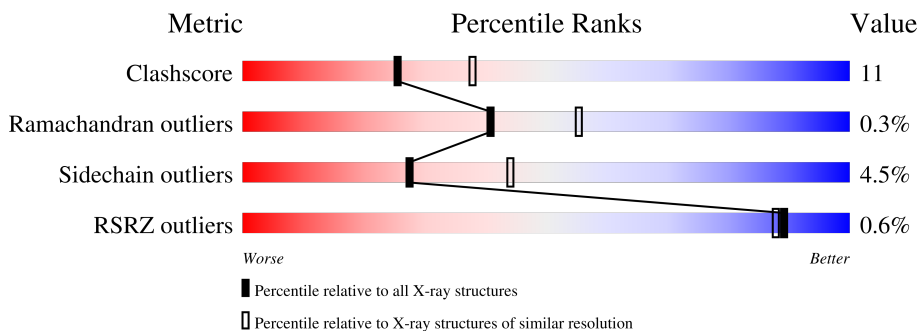
# 1 Overall quality at a glance

The following experimental techniques were used to determine the structure:

*X-RAY DIFFRACTION*

The reported resolution of this entry is 2.40 Å.

Percentile scores (ranging between 0-100) for global validation metrics of the entry are shown in the following graphic. The table shows the number of entries on which the scores are based.



Metric	Whole archive (#Entries)	Similar resolution (#Entries, resolution range(Å))
Clashscore	141614	4398 (2.40-2.40)
Ramachandran outliers	138981	4318 (2.40-2.40)
Sidechain outliers	138945	4319 (2.40-2.40)
RSRZ outliers	127900	3811 (2.40-2.40)

The table below summarises the geometric issues observed across the polymeric chains and their fit to the electron density. The red, orange, yellow and green segments of the lower bar indicate the fraction of residues that contain outliers for  $\geq 3$ , 2, 1 and 0 types of geometric quality criteria respectively. A grey segment represents the fraction of residues that are not modelled. The numeric value for each fraction is indicated below the corresponding segment, with a dot representing fractions  $\leq 5\%$ . The upper red bar (where present) indicates the fraction of residues that have poor fit to the electron density. The numeric value is given above the bar.

Mol	Chain	Length	Quality of chain
1	A	686	 73% 24%
2	B	2	 100%
3	C	2	 50% 50%
4	D	3	 33% 67%
4	F	3	 33% 67%
5	E	5	 100%

The following table lists non-polymeric compounds, carbohydrate monomers and non-standard residues in protein, DNA, RNA chains that are outliers for geometric or electron-density-fit criteria:

<b>Mol</b>	<b>Type</b>	<b>Chain</b>	<b>Res</b>	<b>Chirality</b>	<b>Geometry</b>	<b>Clashes</b>	<b>Electron density</b>
4	GLC	D	3	-	-	-	X
5	BGC	E	1	-	-	-	X
7	ADH	A	693	-	-	X	-

## 2 Entry composition i

There are 8 unique types of molecules in this entry. The entry contains 5722 atoms, of which 0 are hydrogens and 0 are deuteriums.

In the tables below, the ZeroOcc column contains the number of atoms modelled with zero occupancy, the AltConf column contains the number of residues with at least one atom in alternate conformation and the Trace column contains the number of residues modelled with at most 2 atoms.

- Molecule 1 is a protein called PROTEIN (CYCLODEXTRIN GLYCOSYLTRANSFERASE).

Mol	Chain	Residues	Atoms					ZeroOcc	AltConf	Trace
			Total	C	N	O	S			
1	A	686	5268	3322	903	1027	16	0	1	0

There are 2 discrepancies between the modelled and reference sequences:

Chain	Residue	Modelled	Actual	Comment	Reference
A	89	ASP	TYR	engineered mutation	UNP P43379
A	146	PRO	SER	engineered mutation	UNP P43379

- Molecule 2 is an oligosaccharide called alpha-D-glucopyranose-(1-4)-alpha-D-glucopyranose.



Mol	Chain	Residues	Atoms			ZeroOcc	AltConf	Trace
			Total	C	O			
2	B	2	23	12	11	0	0	0

- Molecule 3 is an oligosaccharide called alpha-D-quinovopyranose-(1-4)-alpha-D-glucopyranose.



Mol	Chain	Residues	Atoms			ZeroOcc	AltConf	Trace
			Total	C	O			
3	C	2	21	12	9	0	0	0

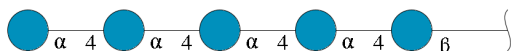
- Molecule 4 is an oligosaccharide called alpha-D-glucopyranose-(1-4)-alpha-D-glucopyranose-

(1-4)-alpha-D-glucopyranose.



Mol	Chain	Residues	Atoms			ZeroOcc	AltConf	Trace
4	D	3	Total	C	O	0	0	0
			34	18	16			
4	F	3	Total	C	O	0	0	0
			34	18	16			

- Molecule 5 is an oligosaccharide called alpha-D-glucopyranose-(1-4)-alpha-D-glucopyranose-(1-4)-alpha-D-glucopyranose-(1-4)-alpha-D-glucopyranose-(1-4)-beta-D-glucopyranose.

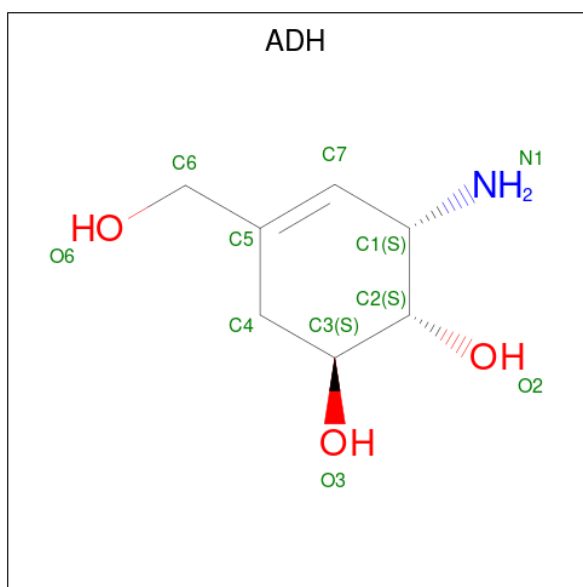


Mol	Chain	Residues	Atoms			ZeroOcc	AltConf	Trace
5	E	5	Total	C	O	0	0	0
			56	30	26			

- Molecule 6 is CALCIUM ION (three-letter code: CA) (formula: Ca).

Mol	Chain	Residues	Atoms		ZeroOcc	AltConf
6	A	2	Total	Ca	0	0
			2	2		

- Molecule 7 is 1-AMINO-2,3-DIHYDROXY-5-HYDROXYMETHYL CYCLOHEX-5-ENE (three-letter code: ADH) (formula: C<sub>7</sub>H<sub>13</sub>NO<sub>3</sub>).



Mol	Chain	Residues	Atoms				ZeroOcc	AltConf
7	A	1	Total	C	N	O	0	0
			11	7	1	3		

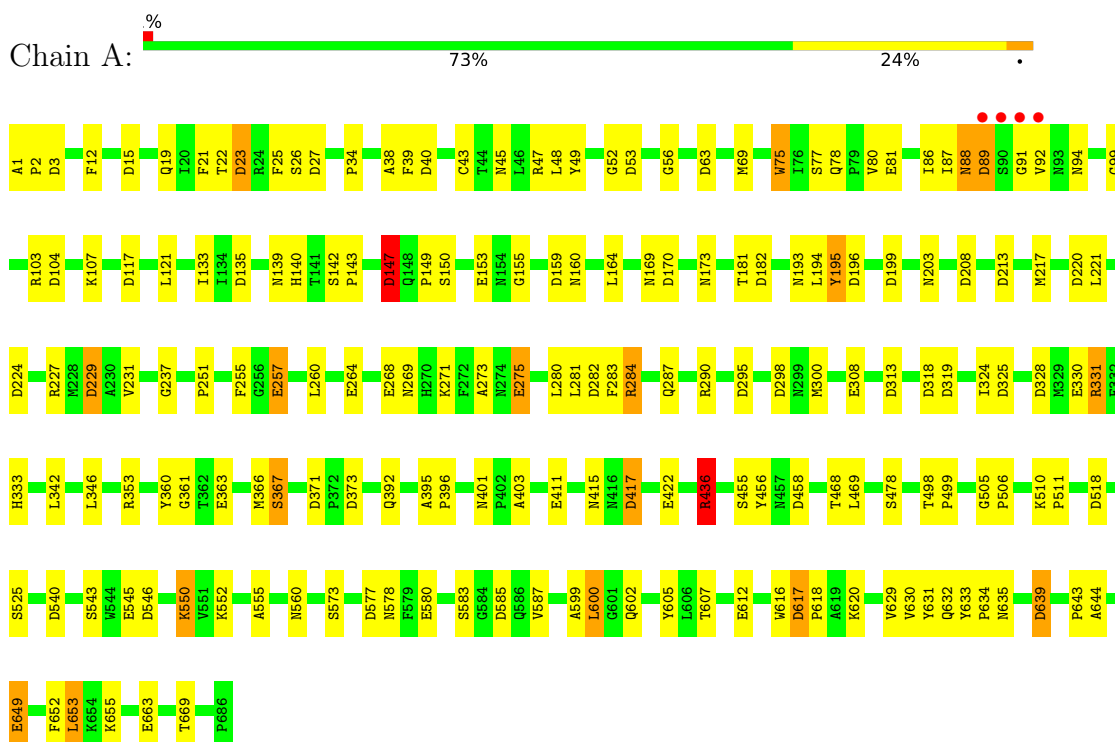
- Molecule 8 is water.

Mol	Chain	Residues	Atoms		ZeroOcc	AltConf
8	A	273	Total	O	0	0
			273	273		

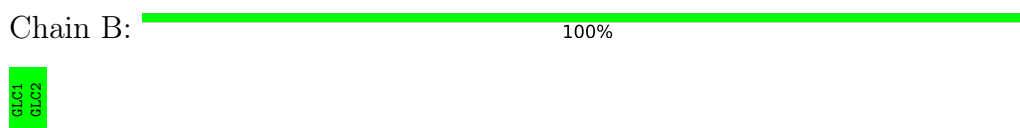
### 3 Residue-property plots

These plots are drawn for all protein, RNA, DNA and oligosaccharide chains in the entry. The first graphic for a chain summarises the proportions of the various outlier classes displayed in the second graphic. The second graphic shows the sequence view annotated by issues in geometry and electron density. Residues are color-coded according to the number of geometric quality criteria for which they contain at least one outlier: green = 0, yellow = 1, orange = 2 and red = 3 or more. A red dot above a residue indicates a poor fit to the electron density ( $RSRZ > 2$ ). Stretches of 2 or more consecutive residues without any outlier are shown as a green connector. Residues present in the sample, but not in the model, are shown in grey.

- Molecule 1: PROTEIN (CYCLODEXTRIN GLYCOSYLTRANSFERASE)



- Molecule 2: alpha-D-glucopyranose-(1-4)-alpha-D-glucopyranose



- Molecule 3: alpha-D-quinovopyranose-(1-4)-alpha-D-glucopyranose



- Molecule 4: alpha-D-glucopyranose-(1-4)-alpha-D-glucopyranose-(1-4)-alpha-D-glucopyranose
- e

Chain D:  33% 67%

GLC1  
GLC2  
GLC3

- Molecule 4: alpha-D-glucopyranose-(1-4)-alpha-D-glucopyranose-(1-4)-alpha-D-glucopyranose

Chain F:  33% 67%

GLC1  
GLC2  
GLC3

- Molecule 5: alpha-D-glucopyranose-(1-4)-alpha-D-glucopyranose-(1-4)-alpha-D-glucopyranose-(1-4)-alpha-D-glucopyranose-(1-4)-beta-D-glucopyranose

Chain E:  100%

BGC1  
GLC2  
GLC3  
GLC4  
GLC5



## 4 Data and refinement statistics

Property	Value	Source
Space group	P 21 21 21	Depositor
Cell constants a, b, c, $\alpha$ , $\beta$ , $\gamma$	120.44Å 111.16Å 65.76Å 90.00° 90.00° 90.00°	Depositor
Resolution (Å)	8.00 – 2.40 28.86 – 2.40	Depositor EDS
% Data completeness (in resolution range)	92.7 (8.00-2.40) 88.5 (28.86-2.40)	Depositor EDS
$R_{merge}$	0.07	Depositor
$R_{sym}$	(Not available)	Depositor
$\langle I/\sigma(I) \rangle$ <sup>1</sup>	3.51 (at 2.39Å)	Xtrriage
Refinement program	TNT	Depositor
R, $R_{free}$	0.206 , 0.248 0.174 , (Not available)	Depositor DCC
$R_{free}$ test set	No test flags present.	wwPDB-VP
Wilson B-factor (Å <sup>2</sup> )	26.9	Xtrriage
Anisotropy	0.152	Xtrriage
Bulk solvent $k_{sol}$ (e/Å <sup>3</sup> ), $B_{sol}$ (Å <sup>2</sup> )	0.32 , 63.3	EDS
L-test for twinning <sup>2</sup>	$\langle  L  \rangle = 0.51$ , $\langle L^2 \rangle = 0.34$	Xtrriage
Estimated twinning fraction	No twinning to report.	Xtrriage
$F_o, F_c$ correlation	0.96	EDS
Total number of atoms	5722	wwPDB-VP
Average B, all atoms (Å <sup>2</sup> )	22.0	wwPDB-VP

Xtrriage's analysis on translational NCS is as follows: *The largest off-origin peak in the Patterson function is 4.05% of the height of the origin peak. No significant pseudotranslation is detected.*

<sup>1</sup>Intensities estimated from amplitudes.

<sup>2</sup>Theoretical values of  $\langle |L| \rangle$ ,  $\langle L^2 \rangle$  for acentric reflections are 0.5, 0.333 respectively for untwinned datasets, and 0.375, 0.2 for perfectly twinned datasets.

## 5 Model quality i

### 5.1 Standard geometry i

Bond lengths and bond angles in the following residue types are not validated in this section: CA, ADH, BGC, G6D, GLC

The Z score for a bond length (or angle) is the number of standard deviations the observed value is removed from the expected value. A bond length (or angle) with  $|Z| > 5$  is considered an outlier worth inspection. RMSZ is the root-mean-square of all Z scores of the bond lengths (or angles).

Mol	Chain	Bond lengths		Bond angles	
		RMSZ	# Z  >5	RMSZ	# Z  >5
1	A	0.60	16/5402 (0.3%)	0.94	76/7363 (1.0%)

All (16) bond length outliers are listed below:

Mol	Chain	Res	Type	Atoms	Z	Observed(Å)	Ideal(Å)
1	A	308	GLU	CD-OE2	5.41	1.31	1.25
1	A	275	GLU	CD-OE2	5.40	1.31	1.25
1	A	153	GLU	CD-OE2	5.36	1.31	1.25
1	A	580	GLU	CD-OE2	5.32	1.31	1.25
1	A	330	GLU	CD-OE2	5.32	1.31	1.25
1	A	545	GLU	CD-OE2	5.31	1.31	1.25
1	A	268	GLU	CD-OE2	5.28	1.31	1.25
1	A	264	GLU	CD-OE2	5.26	1.31	1.25
1	A	422	GLU	CD-OE2	5.25	1.31	1.25
1	A	612	GLU	CD-OE2	5.18	1.31	1.25
1	A	257	GLU	CD-OE2	5.16	1.31	1.25
1	A	363	GLU	CD-OE2	5.16	1.31	1.25
1	A	649	GLU	CD-OE2	5.15	1.31	1.25
1	A	411	GLU	CD-OE2	5.07	1.31	1.25
1	A	81	GLU	CD-OE2	5.05	1.31	1.25
1	A	663	GLU	CD-OE2	5.05	1.31	1.25

All (76) bond angle outliers are listed below:

Mol	Chain	Res	Type	Atoms	Z	Observed(°)	Ideal(°)
1	A	328	ASP	CB-CG-OD2	-7.27	111.76	118.30
1	A	371	ASP	CB-CG-OD2	-6.75	112.22	118.30
1	A	147	ASP	CB-CG-OD2	-6.75	112.23	118.30
1	A	104	ASP	CB-CG-OD2	-6.64	112.32	118.30
1	A	328	ASP	CB-CG-OD1	6.61	124.25	118.30

*Continued on next page...*

*Continued from previous page...*

Mol	Chain	Res	Type	Atoms	Z	Observed(°)	Ideal(°)
1	A	63	ASP	CB-CG-OD2	-6.58	112.38	118.30
1	A	585	ASP	CB-CG-OD2	-6.54	112.42	118.30
1	A	318	ASP	CB-CG-OD2	-6.52	112.43	118.30
1	A	104	ASP	CB-CG-OD1	6.52	124.17	118.30
1	A	458	ASP	CB-CG-OD2	-6.51	112.44	118.30
1	A	213	ASP	CB-CG-OD2	-6.47	112.47	118.30
1	A	298	ASP	CB-CG-OD2	-6.33	112.60	118.30
1	A	224	ASP	CB-CG-OD2	-6.27	112.66	118.30
1	A	135	ASP	CB-CG-OD2	-6.23	112.70	118.30
1	A	135	ASP	CB-CG-OD1	6.17	123.86	118.30
1	A	617	ASP	CB-CG-OD2	-6.17	112.75	118.30
1	A	373	ASP	CB-CG-OD2	-6.15	112.76	118.30
1	A	117	ASP	CB-CG-OD2	-6.14	112.77	118.30
1	A	229	ASP	CB-CG-OD2	-6.13	112.78	118.30
1	A	170	ASP	CB-CG-OD2	-6.11	112.80	118.30
1	A	159	ASP	CB-CG-OD2	-6.09	112.82	118.30
1	A	199	ASP	CB-CG-OD2	-6.06	112.84	118.30
1	A	546	ASP	CB-CG-OD2	-6.05	112.85	118.30
1	A	518	ASP	CB-CG-OD2	-6.05	112.86	118.30
1	A	639	ASP	CB-CG-OD2	-6.04	112.87	118.30
1	A	298	ASP	CB-CG-OD1	6.03	123.72	118.30
1	A	325	ASP	CB-CG-OD2	-5.99	112.91	118.30
1	A	89	ASP	CB-CG-OD2	-5.97	112.92	118.30
1	A	319	ASP	CB-CG-OD2	-5.94	112.95	118.30
1	A	27	ASP	CB-CG-OD2	-5.92	112.97	118.30
1	A	282	ASP	CB-CG-OD2	-5.91	112.98	118.30
1	A	23	ASP	CB-CG-OD2	-5.90	112.99	118.30
1	A	585	ASP	CB-CG-OD1	5.90	123.61	118.30
1	A	63	ASP	CB-CG-OD1	5.89	123.60	118.30
1	A	313	ASP	CB-CG-OD2	-5.88	113.01	118.30
1	A	213	ASP	CB-CG-OD1	5.84	123.56	118.30
1	A	318	ASP	CB-CG-OD1	5.82	123.54	118.30
1	A	3	ASP	CB-CG-OD1	5.78	123.50	118.30
1	A	3	ASP	CB-CG-OD2	-5.78	113.10	118.30
1	A	199	ASP	CB-CG-OD1	5.75	123.48	118.30
1	A	639	ASP	CB-CG-OD1	5.71	123.44	118.30
1	A	325	ASP	CB-CG-OD1	5.70	123.43	118.30
1	A	208	ASP	CB-CG-OD2	-5.69	113.18	118.30
1	A	220	ASP	CB-CG-OD2	-5.68	113.19	118.30
1	A	159	ASP	CB-CG-OD1	5.66	123.39	118.30
1	A	27	ASP	CB-CG-OD1	5.63	123.36	118.30
1	A	313	ASP	CB-CG-OD1	5.62	123.36	118.30

*Continued on next page...*

*Continued from previous page...*

Mol	Chain	Res	Type	Atoms	Z	Observed(°)	Ideal(°)
1	A	182	ASP	CB-CG-OD2	-5.56	113.30	118.30
1	A	295	ASP	CB-CG-OD2	-5.54	113.32	118.30
1	A	617	ASP	CB-CG-OD1	5.53	123.28	118.30
1	A	540	ASP	CB-CG-OD1	5.52	123.27	118.30
1	A	540	ASP	CB-CG-OD2	-5.52	113.33	118.30
1	A	40	ASP	CB-CG-OD1	5.51	123.26	118.30
1	A	147	ASP	CB-CG-OD1	5.51	123.25	118.30
1	A	208	ASP	CB-CG-OD1	5.48	123.23	118.30
1	A	371	ASP	CB-CG-OD1	5.48	123.23	118.30
1	A	458	ASP	CB-CG-OD1	5.48	123.23	118.30
1	A	53	ASP	CB-CG-OD2	-5.48	113.37	118.30
1	A	117	ASP	CB-CG-OD1	5.48	123.23	118.30
1	A	40	ASP	CB-CG-OD2	-5.46	113.39	118.30
1	A	436	ARG	NE-CZ-NH1	5.45	123.03	120.30
1	A	295	ASP	CB-CG-OD1	5.45	123.20	118.30
1	A	417	ASP	CB-CG-OD2	-5.44	113.41	118.30
1	A	319	ASP	CB-CG-OD1	5.42	123.18	118.30
1	A	229	ASP	CB-CG-OD1	5.40	123.16	118.30
1	A	15	ASP	CB-CG-OD2	-5.34	113.50	118.30
1	A	282	ASP	CB-CG-OD1	5.31	123.08	118.30
1	A	518	ASP	CB-CG-OD1	5.30	123.07	118.30
1	A	89	ASP	CB-CG-OD1	5.28	123.06	118.30
1	A	577	ASP	CB-CG-OD2	-5.27	113.56	118.30
1	A	224	ASP	CB-CG-OD1	5.26	123.04	118.30
1	A	546	ASP	CB-CG-OD1	5.25	123.03	118.30
1	A	373	ASP	CB-CG-OD1	5.25	123.02	118.30
1	A	23	ASP	CB-CG-OD1	5.24	123.02	118.30
1	A	170	ASP	CB-CG-OD1	5.17	122.95	118.30
1	A	417	ASP	CB-CG-OD1	5.02	122.82	118.30

There are no chirality outliers.

There are no planarity outliers.

## 5.2 Too-close contacts

In the following table, the Non-H and H(model) columns list the number of non-hydrogen atoms and hydrogen atoms in the chain respectively. The H(added) column lists the number of hydrogen atoms added and optimized by MolProbity. The Clashes column lists the number of clashes within the asymmetric unit, whereas Symm-Clashes lists symmetry-related clashes.

Mol	Chain	Non-H	H(model)	H(added)	Clashes	Symm-Clashes
1	A	5268	0	5031	100	0
2	B	23	0	21	0	0
3	C	21	0	12	5	0
4	D	34	0	29	5	0
4	F	34	0	30	0	0
5	E	56	0	48	4	0
6	A	2	0	0	0	0
7	A	11	0	12	6	0
8	A	273	0	0	4	0
All	All	5722	0	5183	112	0

The all-atom clashscore is defined as the number of clashes found per 1000 atoms (including hydrogen atoms). The all-atom clashscore for this structure is 11.

All (112) close contacts within the same asymmetric unit are listed below, sorted by their clash magnitude.

Atom-1	Atom-2	Interatomic distance (Å)	Clash overlap (Å)
7:A:693:ADH:HN22	3:C:2:G6D:C4	1.17	1.50
7:A:693:ADH:HN22	3:C:2:G6D:C3	1.79	0.94
1:A:617:ASP:HB3	1:A:620:LYS:HE2	1.52	0.91
1:A:75:TRP:CZ2	1:A:227:ARG:HD3	2.07	0.90
1:A:139:ASN:HD22	1:A:140:HIS:HD2	1.20	0.89
1:A:227:ARG:HG3	1:A:255:PHE:CE2	2.08	0.88
1:A:395:ALA:HB3	1:A:396:PRO:HD3	1.64	0.79
1:A:89:ASP:O	1:A:92:VAL:HG22	1.84	0.76
4:D:2:GLC:H61	4:D:3:GLC:H5	1.72	0.72
1:A:607:THR:HG22	1:A:653:LEU:HD21	1.73	0.71
1:A:147:ASP:O	1:A:149:PRO:HD3	1.92	0.69
4:D:2:GLC:C6	4:D:3:GLC:H5	2.21	0.69
1:A:560:ASN:HD21	1:A:578:ASN:HA	1.57	0.68
1:A:333:HIS:O	1:A:367:SER:HB3	1.94	0.68
1:A:88:ASN:HD21	1:A:91:GLY:H	1.39	0.67
1:A:630:VAL:HG12	1:A:631:TYR:CD1	2.31	0.66
1:A:498:THR:CG2	1:A:499:PRO:HD2	2.25	0.66
1:A:498:THR:HG22	1:A:499:PRO:HD2	1.77	0.65
1:A:633:TYR:HA	1:A:635:ASN:N	2.11	0.65
4:D:2:GLC:H61	4:D:3:GLC:C5	2.27	0.64
1:A:632:GLN:O	1:A:635:ASN:HB2	1.98	0.64
1:A:260:LEU:HB2	1:A:283:PHE:HB3	1.80	0.63
1:A:38:ALA:HB2	1:A:86:ILE:HD11	1.80	0.63
1:A:271:LYS:O	1:A:275:GLU:HG3	1.99	0.63
1:A:194:LEU:O	1:A:195:TYR:HB2	1.99	0.62

*Continued on next page...*

*Continued from previous page...*

Atom-1	Atom-2	Interatomic distance (Å)	Clash overlap (Å)
1:A:251:PRO:HB3	1:A:506:PRO:HG3	1.82	0.61
1:A:607:THR:CG2	1:A:653:LEU:HD21	2.31	0.61
1:A:617:ASP:CB	1:A:620:LYS:HE2	2.31	0.58
1:A:227:ARG:HD2	1:A:281:LEU:HD11	1.85	0.58
1:A:34:PRO:HG2	1:A:49:TYR:CG	2.39	0.58
1:A:47[A]:ARG:HD3	1:A:94:ASN:OD1	2.04	0.58
7:A:693:ADH:C7	3:C:2:G6D:C4	2.82	0.57
1:A:88:ASN:ND2	1:A:91:GLY:H	2.03	0.57
7:A:693:ADH:C1	3:C:2:G6D:C4	2.78	0.56
1:A:142:SER:HB2	1:A:143:PRO:HD2	1.86	0.56
1:A:633:TYR:CD2	1:A:634:PRO:HA	2.40	0.56
1:A:139:ASN:HD22	1:A:140:HIS:CD2	2.12	0.56
1:A:633:TYR:CG	1:A:634:PRO:HA	2.41	0.56
1:A:34:PRO:HG2	1:A:49:TYR:CB	2.37	0.55
1:A:587:VAL:HG13	1:A:644:ALA:HB2	1.88	0.55
1:A:633:TYR:HA	1:A:635:ASN:H	1.71	0.55
1:A:139:ASN:ND2	1:A:140:HIS:HD2	1.98	0.55
1:A:543:SER:HB3	1:A:550:LYS:HB2	1.89	0.55
1:A:231:VAL:HG22	1:A:257:GLU:O	2.06	0.54
1:A:1:ALA:HB1	1:A:2:PRO:HD2	1.91	0.53
1:A:45:ASN:HD22	1:A:48:LEU:HD11	1.73	0.53
1:A:633:TYR:CA	1:A:635:ASN:H	2.22	0.53
1:A:630:VAL:HG12	1:A:631:TYR:CE1	2.44	0.52
1:A:121:LEU:HD12	1:A:121:LEU:O	2.11	0.51
1:A:499:PRO:HB2	1:A:573:SER:HB3	1.92	0.51
1:A:45:ASN:ND2	1:A:48:LEU:HD11	2.26	0.51
1:A:616:TRP:O	1:A:618:PRO:HD3	2.11	0.51
1:A:284:ARG:HD3	8:A:837:HOH:O	2.11	0.50
1:A:92:VAL:HG23	1:A:94:ASN:HD21	1.76	0.50
1:A:26:SER:O	1:A:56:GLY:HA3	2.11	0.50
1:A:456:TYR:O	1:A:468:THR:HG23	2.11	0.50
1:A:652:PHE:C	1:A:653:LEU:HD23	2.32	0.50
1:A:505:GLY:HA2	1:A:506:PRO:C	2.30	0.50
5:E:4:GLC:H62	5:E:5:GLC:C1	2.42	0.49
1:A:617:ASP:HB3	1:A:620:LYS:CE	2.35	0.49
1:A:80:VAL:HA	1:A:107:LYS:O	2.12	0.49
1:A:12:PHE:CE2	1:A:133:ILE:HD11	2.47	0.49
1:A:510:LYS:HB2	1:A:511:PRO:HD2	1.95	0.49
1:A:649:GLU:HG2	1:A:669:THR:HG22	1.93	0.49
1:A:290:ARG:HD2	1:A:324:ILE:O	2.13	0.48
1:A:583:SER:HB2	1:A:643:PRO:HG3	1.95	0.48

*Continued on next page...*

*Continued from previous page...*

Atom-1	Atom-2	Interatomic distance (Å)	Clash overlap (Å)
1:A:395:ALA:HB3	1:A:396:PRO:CD	2.37	0.48
1:A:417:ASP:OD1	1:A:436:ARG:HD2	2.13	0.48
1:A:34:PRO:O	1:A:39:PHE:HB2	2.14	0.48
1:A:19:GLN:O	1:A:360:TYR:HB3	2.14	0.48
1:A:300:MET:HB2	1:A:415:ASN:O	2.14	0.47
1:A:599:ALA:O	1:A:602:GLN:HB3	2.14	0.47
1:A:284:ARG:HB2	8:A:720:HOH:O	2.14	0.47
1:A:78:GLN:HB3	1:A:99:GLY:O	2.14	0.47
1:A:361:GLY:HA3	1:A:366:MET:SD	2.54	0.47
1:A:229:ASP:OD1	7:A:693:ADH:H1	2.14	0.47
1:A:237:GLY:HA3	1:A:639:ASP:O	2.14	0.47
1:A:417:ASP:O	1:A:436:ARG:HG3	2.15	0.47
7:A:693:ADH:N1	3:C:2:G6D:C5	2.68	0.47
1:A:605:TYR:CE1	1:A:655:LYS:HB2	2.50	0.47
1:A:23:ASP:HA	1:A:52:GLY:HA3	1.97	0.46
1:A:401:ASN:OD1	1:A:403:ALA:HB3	2.16	0.46
1:A:195:TYR:HE2	4:D:3:GLC:HO4	1.62	0.46
1:A:333:HIS:HB2	1:A:342:LEU:HD13	1.98	0.46
1:A:203:ASN:HA	8:A:942:HOH:O	2.16	0.45
1:A:25:PHE:HB3	8:A:742:HOH:O	2.16	0.45
5:E:1:BGC:H6C1	5:E:2:GLC:O5	2.16	0.45
1:A:142:SER:HB2	1:A:143:PRO:CD	2.46	0.45
1:A:69:MET:O	1:A:392:GLN:HA	2.17	0.45
1:A:260:LEU:HB2	1:A:283:PHE:CB	2.44	0.44
1:A:468:THR:HG22	1:A:469:LEU:N	2.32	0.44
4:D:2:GLC:H62	4:D:3:GLC:H5	1.99	0.44
1:A:92:VAL:HG23	1:A:92:VAL:O	2.18	0.43
1:A:87:ILE:CD1	1:A:143:PRO:HG2	2.47	0.43
1:A:395:ALA:N	1:A:396:PRO:HD2	2.33	0.43
1:A:600:LEU:HD22	5:E:3:GLC:H3	2.00	0.43
1:A:511:PRO:HB3	1:A:555:ALA:HA	2.01	0.43
1:A:143:PRO:HB3	1:A:196:ASP:OD1	2.19	0.43
1:A:164:LEU:HD23	1:A:164:LEU:HA	1.85	0.42
1:A:273:ALA:HB2	1:A:280:LEU:HD12	2.00	0.42
1:A:22:THR:O	1:A:52:GLY:HA3	2.20	0.42
1:A:181:THR:HG22	1:A:193:ASN:O	2.20	0.42
1:A:498:THR:HG22	1:A:499:PRO:CD	2.47	0.41
1:A:231:VAL:HG22	1:A:257:GLU:C	2.41	0.41
1:A:78:GLN:HG2	1:A:80:VAL:HG22	2.03	0.41
1:A:560:ASN:ND2	1:A:578:ASN:HA	2.30	0.41
5:E:1:BGC:C6	5:E:2:GLC:C1	2.98	0.41

*Continued on next page...*

Continued from previous page...

Atom-1	Atom-2	Interatomic distance (Å)	Clash overlap (Å)
1:A:221:LEU:HD23	1:A:221:LEU:HA	1.99	0.40
1:A:283:PHE:O	1:A:287:GLN:HG2	2.22	0.40
1:A:331:ARG:HE	1:A:331:ARG:HB3	1.72	0.40
1:A:142:SER:OG	1:A:155:GLY:HA2	2.22	0.40
1:A:346:LEU:HD23	1:A:346:LEU:HA	1.71	0.40

There are no symmetry-related clashes.

## 5.3 Torsion angles [i](#)

### 5.3.1 Protein backbone [i](#)

In the following table, the Percentiles column shows the percent Ramachandran outliers of the chain as a percentile score with respect to all X-ray entries followed by that with respect to entries of similar resolution.

The Analysed column shows the number of residues for which the backbone conformation was analysed, and the total number of residues.

Mol	Chain	Analysed	Favoured	Allowed	Outliers	Percentiles
1	A	685/686 (100%)	652 (95%)	31 (4%)	2 (0%)	41 55

All (2) Ramachandran outliers are listed below:

Mol	Chain	Res	Type
1	A	629	VAL
1	A	195	TYR

### 5.3.2 Protein sidechains [i](#)

In the following table, the Percentiles column shows the percent sidechain outliers of the chain as a percentile score with respect to all X-ray entries followed by that with respect to entries of similar resolution.

The Analysed column shows the number of residues for which the sidechain conformation was analysed, and the total number of residues.

Mol	Chain	Analysed	Rotameric	Outliers	Percentiles
1	A	557/556 (100%)	532 (96%)	25 (4%)	27 44



All (25) residues with a non-rotameric sidechain are listed below:

Mol	Chain	Res	Type
1	A	21	PHE
1	A	43	CYS
1	A	75	TRP
1	A	77	SER
1	A	88	ASN
1	A	103	ARG
1	A	147	ASP
1	A	150	SER
1	A	160	ASN
1	A	169	ASN
1	A	173	ASN
1	A	217	MET
1	A	269	ASN
1	A	284	ARG
1	A	331	ARG
1	A	353	ARG
1	A	367	SER
1	A	436	ARG
1	A	455	SER
1	A	478	SER
1	A	525	SER
1	A	550	LYS
1	A	552	LYS
1	A	600	LEU
1	A	653	LEU

Sometimes sidechains can be flipped to improve hydrogen bonding and reduce clashes. All (14) such sidechains are listed below:

Mol	Chain	Res	Type
1	A	10	GLN
1	A	62	ASN
1	A	88	ASN
1	A	120	ASN
1	A	140	HIS
1	A	263	ASN
1	A	269	ASN
1	A	392	GLN
1	A	410	GLN
1	A	416	ASN
1	A	453	GLN
1	A	479	ASN

*Continued on next page...*

*Continued from previous page...*

Mol	Chain	Res	Type
1	A	560	ASN
1	A	685	GLN

### 5.3.3 RNA [i](#)

There are no RNA molecules in this entry.

## 5.4 Non-standard residues in protein, DNA, RNA chains [i](#)

There are no non-standard protein/DNA/RNA residues in this entry.

## 5.5 Carbohydrates [i](#)

15 monosaccharides are modelled in this entry.

In the following table, the Counts columns list the number of bonds (or angles) for which Mogul statistics could be retrieved, the number of bonds (or angles) that are observed in the model and the number of bonds (or angles) that are defined in the Chemical Component Dictionary. The Link column lists molecule types, if any, to which the group is linked. The Z score for a bond length (or angle) is the number of standard deviations the observed value is removed from the expected value. A bond length (or angle) with  $|Z| > 2$  is considered an outlier worth inspection. RMSZ is the root-mean-square of all Z scores of the bond lengths (or angles).

Mol	Type	Chain	Res	Link	Bond lengths			Bond angles		
					Counts	RMSZ	$\# Z  > 2$	Counts	RMSZ	$\# Z  > 2$
2	GLC	B	1	2	12,12,12	0.36	0	17,17,17	0.58	0
2	GLC	B	2	2	11,11,12	0.42	0	15,15,17	0.77	0
3	GLC	C	1	3	12,12,12	0.36	0	17,17,17	0.59	0
3	G6D	C	2	3,7	9,9,11	0.37	0	10,12,16	1.16	1 (10%)
4	GLC	D	1	7,4	12,12,12	0.36	0	17,17,17	0.48	0
4	GLC	D	2	4	11,11,12	0.42	0	15,15,17	1.36	1 (6%)
4	GLC	D	3	4	11,11,12	0.39	0	15,15,17	1.07	1 (6%)
5	BGC	E	1	5	12,12,12	0.36	0	17,17,17	0.81	1 (5%)
5	GLC	E	2	5	11,11,12	0.45	0	15,15,17	1.63	2 (13%)
5	GLC	E	3	5	11,11,12	0.45	0	15,15,17	1.43	1 (6%)
5	GLC	E	4	5	11,11,12	0.45	0	15,15,17	0.89	1 (6%)
5	GLC	E	5	5	11,11,12	0.40	0	15,15,17	1.24	1 (6%)
4	GLC	F	1	4	12,12,12	0.36	0	17,17,17	0.63	0
4	GLC	F	2	4	11,11,12	0.44	0	15,15,17	0.95	1 (6%)
4	GLC	F	3	4	11,11,12	0.39	0	15,15,17	1.35	2 (13%)

In the following table, the Chirals column lists the number of chiral outliers, the number of chiral centers analysed, the number of these observed in the model and the number defined in the Chemical Component Dictionary. Similar counts are reported in the Torsion and Rings columns. '-' means no outliers of that kind were identified.

Mol	Type	Chain	Res	Link	Chirals	Torsions	Rings
2	GLC	B	1	2	-	2/2/22/22	0/1/1/1
2	GLC	B	2	2	-	0/2/19/22	0/1/1/1
3	GLC	C	1	3	-	1/2/22/22	0/1/1/1
3	G6D	C	2	3,7	-	-	0/1/1/1
4	GLC	D	1	7,4	-	0/2/22/22	0/1/1/1
4	GLC	D	2	4	-	2/2/19/22	0/1/1/1
4	GLC	D	3	4	-	2/2/19/22	0/1/1/1
5	BGC	E	1	5	-	1/2/22/22	0/1/1/1
5	GLC	E	2	5	-	1/2/19/22	0/1/1/1
5	GLC	E	3	5	-	2/2/19/22	0/1/1/1
5	GLC	E	4	5	-	2/2/19/22	0/1/1/1
5	GLC	E	5	5	-	1/2/19/22	0/1/1/1
4	GLC	F	1	4	-	0/2/22/22	0/1/1/1
4	GLC	F	2	4	-	0/2/19/22	0/1/1/1
4	GLC	F	3	4	-	2/2/19/22	0/1/1/1

There are no bond length outliers.

All (12) bond angle outliers are listed below:

Mol	Chain	Res	Type	Atoms	Z	Observed(°)	Ideal(°)
4	D	2	GLC	C1-O5-C5	4.34	118.07	112.19
5	E	3	GLC	C1-O5-C5	4.27	117.98	112.19
5	E	2	GLC	C1-O5-C5	4.16	117.83	112.19
5	E	5	GLC	C1-O5-C5	3.43	116.84	112.19
4	F	3	GLC	C1-O5-C5	3.37	116.76	112.19
3	C	2	G6D	O5-C1-C2	2.82	115.13	110.77
4	F	2	GLC	C1-O5-C5	2.63	115.75	112.19
5	E	4	GLC	C1-O5-C5	2.40	115.44	112.19
5	E	2	GLC	C1-C2-C3	2.36	112.57	109.67
4	F	3	GLC	C3-C4-C5	2.18	114.13	110.24
5	E	1	BGC	O4-C4-C3	-2.14	105.40	110.35
4	D	3	GLC	C1-O5-C5	2.09	115.03	112.19

There are no chirality outliers.

All (16) torsion outliers are listed below:

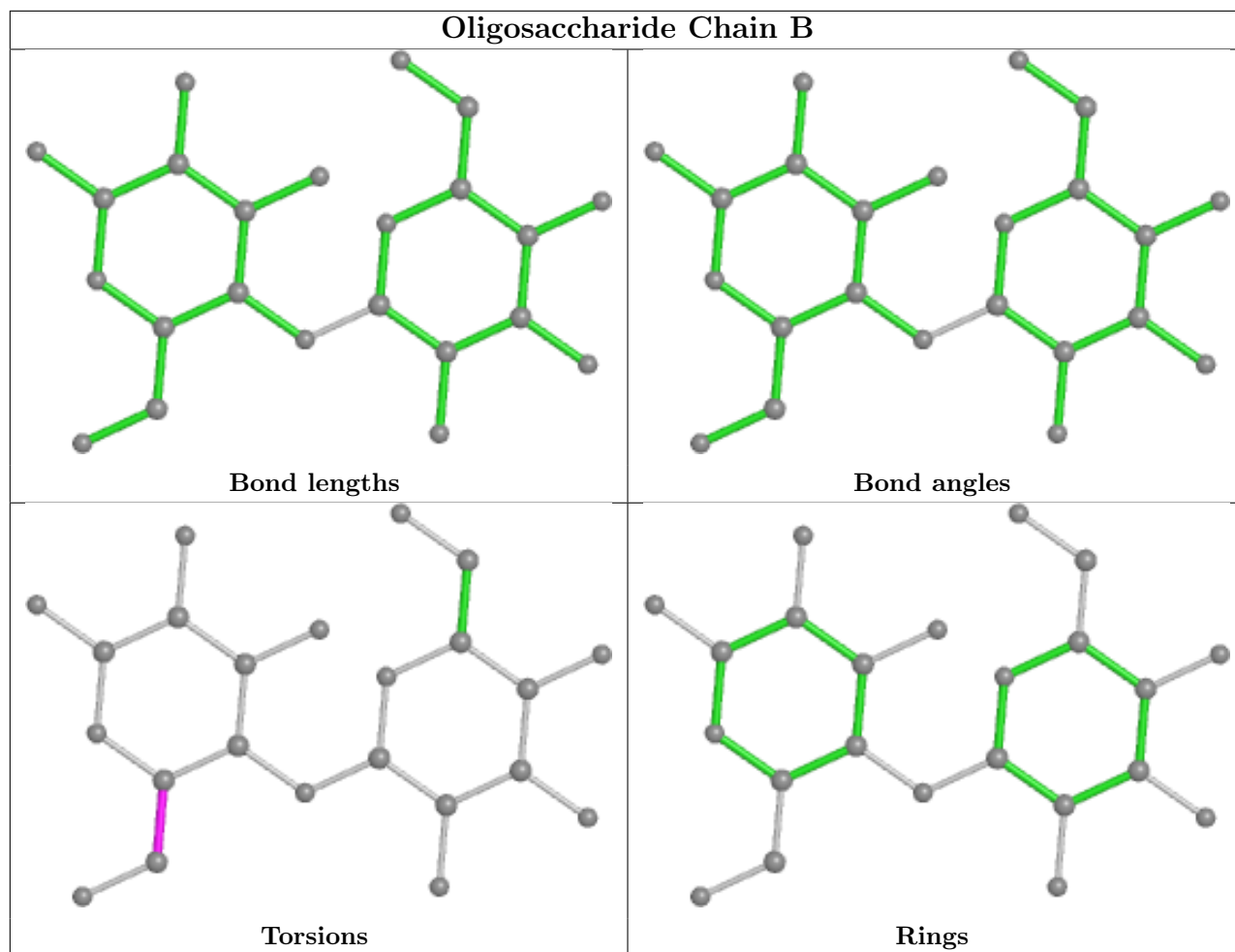
Mol	Chain	Res	Type	Atoms
4	D	3	GLC	C4-C5-C6-O6
4	D	2	GLC	O5-C5-C6-O6
4	F	3	GLC	O5-C5-C6-O6
4	D	3	GLC	O5-C5-C6-O6
4	F	3	GLC	C4-C5-C6-O6
4	D	2	GLC	C4-C5-C6-O6
2	B	1	GLC	C4-C5-C6-O6
2	B	1	GLC	O5-C5-C6-O6
5	E	3	GLC	C4-C5-C6-O6
5	E	4	GLC	C4-C5-C6-O6
5	E	5	GLC	O5-C5-C6-O6
5	E	2	GLC	O5-C5-C6-O6
5	E	3	GLC	O5-C5-C6-O6
5	E	4	GLC	O5-C5-C6-O6
5	E	1	BGC	C4-C5-C6-O6
3	C	1	GLC	C4-C5-C6-O6

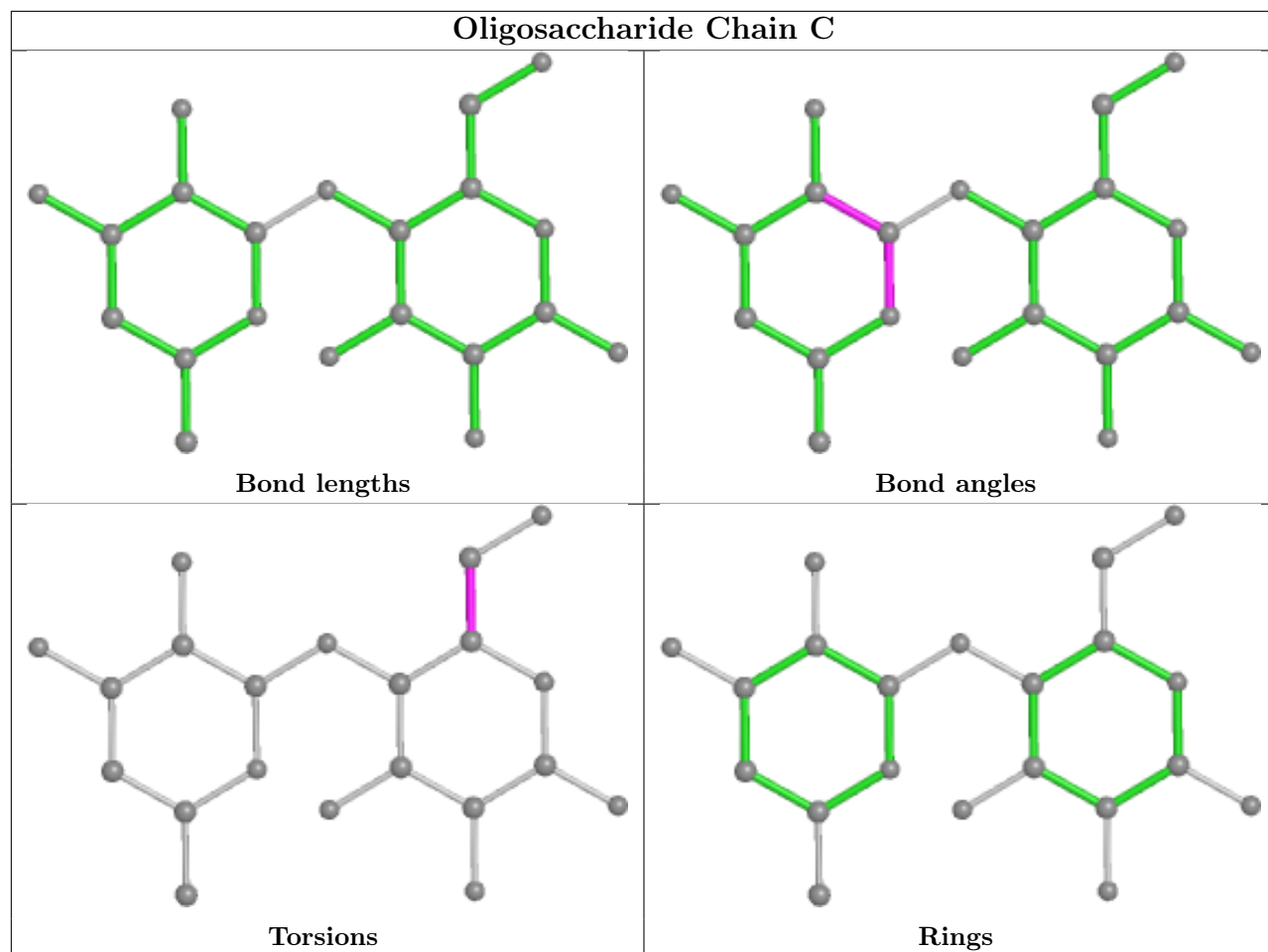
There are no ring outliers.

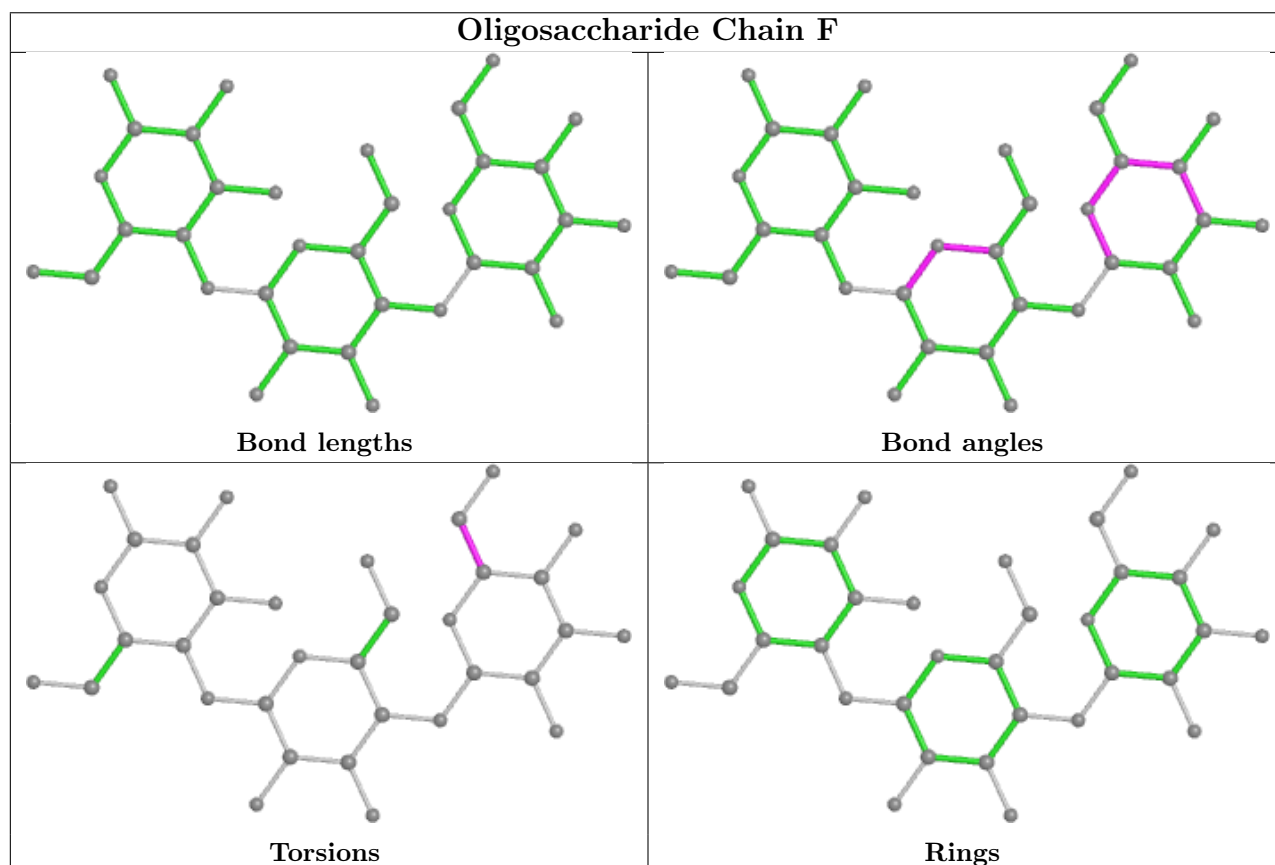
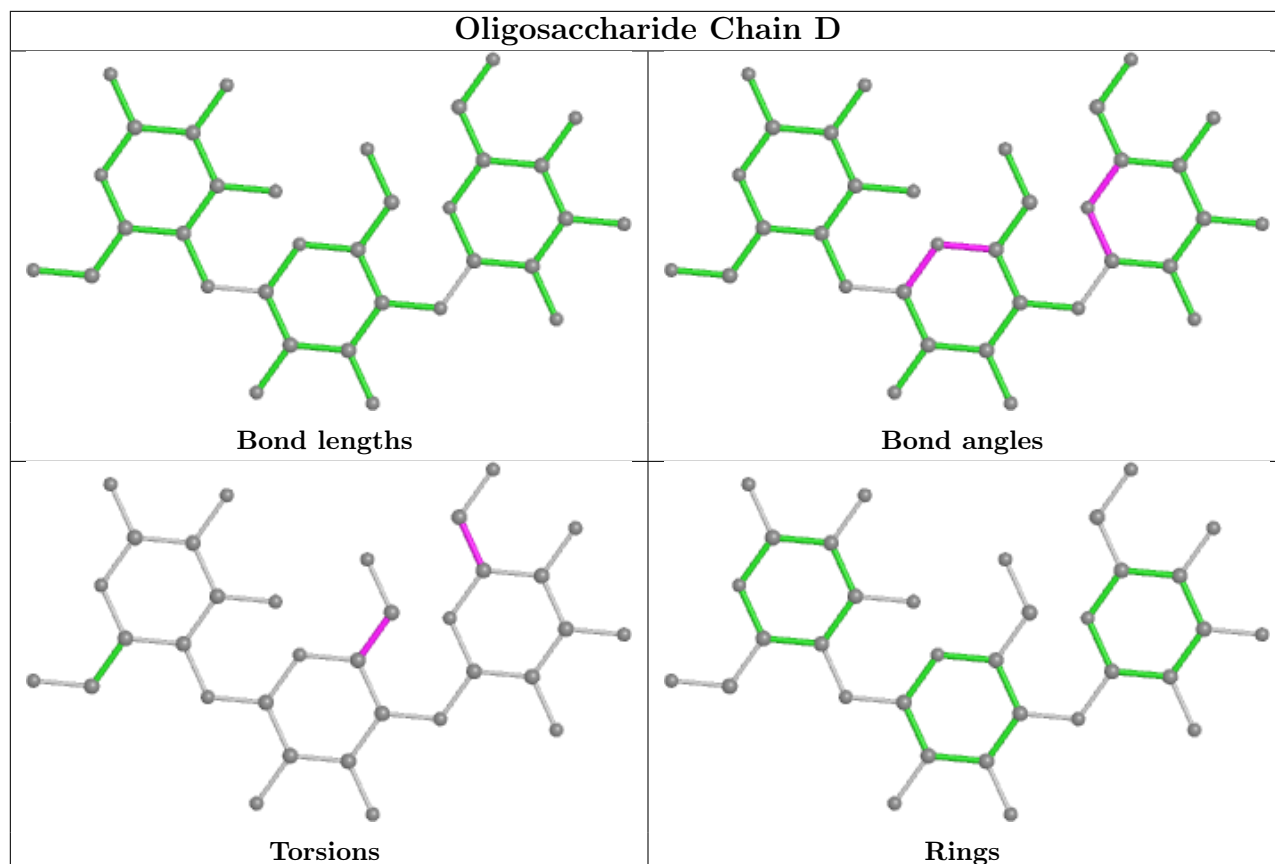
8 monomers are involved in 14 short contacts:

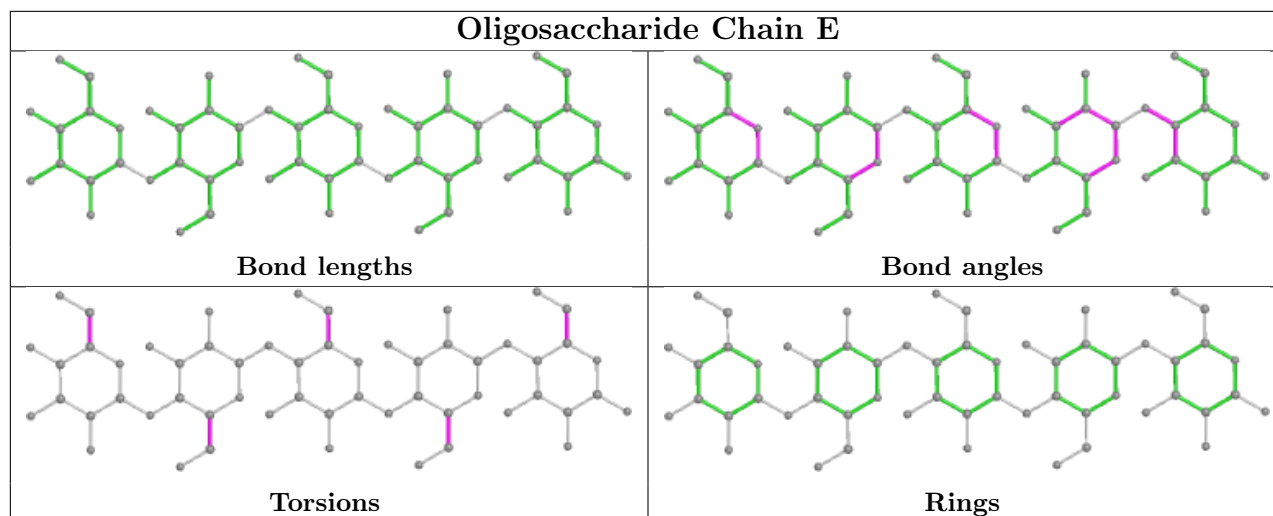
Mol	Chain	Res	Type	Clashes	Symm-Clashes
3	C	2	G6D	5	0
5	E	5	GLC	1	0
5	E	2	GLC	2	0
5	E	3	GLC	1	0
5	E	1	BGC	2	0
5	E	4	GLC	1	0
4	D	2	GLC	4	0
4	D	3	GLC	5	0

The following is a two-dimensional graphical depiction of Mogul quality analysis of bond lengths, bond angles, torsion angles, and ring geometry for oligosaccharide.









## 5.6 Ligand geometry [i](#)

Of 3 ligands modelled in this entry, 2 are monoatomic - leaving 1 for Mogul analysis.

In the following table, the Counts columns list the number of bonds (or angles) for which Mogul statistics could be retrieved, the number of bonds (or angles) that are observed in the model and the number of bonds (or angles) that are defined in the Chemical Component Dictionary. The Link column lists molecule types, if any, to which the group is linked. The Z score for a bond length (or angle) is the number of standard deviations the observed value is removed from the expected value. A bond length (or angle) with  $|Z| > 2$  is considered an outlier worth inspection. RMSZ is the root-mean-square of all Z scores of the bond lengths (or angles).

Mol	Type	Chain	Res	Link	Bond lengths			Bond angles		
					Counts	RMSZ	# Z  > 2	Counts	RMSZ	# Z  > 2
7	ADH	A	693	3,4	11,11,11	2.04	3 (27%)	10,15,15	1.04	0

In the following table, the Chirals column lists the number of chiral outliers, the number of chiral centers analysed, the number of these observed in the model and the number defined in the Chemical Component Dictionary. Similar counts are reported in the Torsion and Rings columns. '-' means no outliers of that kind were identified.

Mol	Type	Chain	Res	Link	Chirals	Torsions	Rings
7	ADH	A	693	3,4	-	1/2/18/18	0/1/1/1

All (3) bond length outliers are listed below:

Mol	Chain	Res	Type	Atoms	Z	Observed(Å)	Ideal(Å)
7	A	693	ADH	C4-C5	-4.86	1.40	1.50
7	A	693	ADH	C1-C7	-3.78	1.41	1.50
7	A	693	ADH	C7-C5	2.26	1.41	1.33



There are no bond angle outliers.

There are no chirality outliers.

All (1) torsion outliers are listed below:

Mol	Chain	Res	Type	Atoms
7	A	693	ADH	C7-C5-C6-O6

There are no ring outliers.

1 monomer is involved in 6 short contacts:

Mol	Chain	Res	Type	Clashes	Symm-Clashes
7	A	693	ADH	6	0

## 5.7 Other polymers [i](#)

There are no such residues in this entry.

## 5.8 Polymer linkage issues [i](#)

There are no chain breaks in this entry.

## 6 Fit of model and data [i](#)

### 6.1 Protein, DNA and RNA chains [i](#)

In the following table, the column labelled '#RSRZ > 2' contains the number (and percentage) of RSRZ outliers, followed by percent RSRZ outliers for the chain as percentile scores relative to all X-ray entries and entries of similar resolution. The OWAB column contains the minimum, median, 95<sup>th</sup> percentile and maximum values of the occupancy-weighted average B-factor per residue. The column labelled 'Q < 0.9' lists the number of (and percentage) of residues with an average occupancy less than 0.9.

Mol	Chain	Analysed	<RSRZ>	#RSRZ>2	OWAB(Å <sup>2</sup> )	Q<0.9
1	A	686/686 (100%)	-0.50	4 (0%) 89 88	11, 20, 37, 70	0

All (4) RSRZ outliers are listed below:

Mol	Chain	Res	Type	RSRZ
1	A	89	ASP	4.3
1	A	90	SER	3.4
1	A	92	VAL	2.2
1	A	91	GLY	2.2

### 6.2 Non-standard residues in protein, DNA, RNA chains [i](#)

There are no non-standard protein/DNA/RNA residues in this entry.

### 6.3 Carbohydrates [i](#)

In the following table, the Atoms column lists the number of modelled atoms in the group and the number defined in the chemical component dictionary. The B-factors column lists the minimum, median, 95<sup>th</sup> percentile and maximum values of B factors of atoms in the group. The column labelled 'Q < 0.9' lists the number of atoms with occupancy less than 0.9.

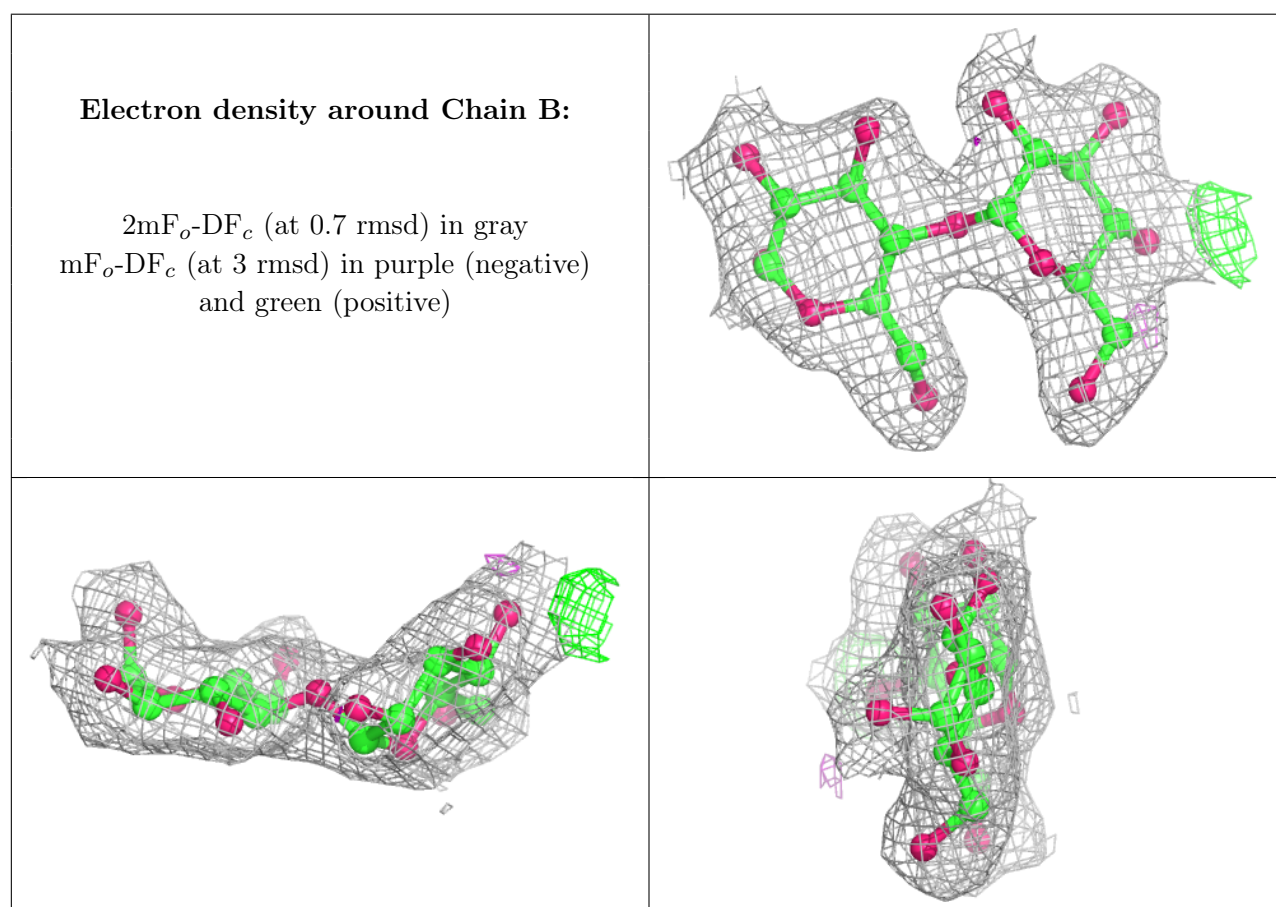
Mol	Type	Chain	Res	Atoms	RSCC	RSR	B-factors(Å <sup>2</sup> )	Q<0.9
5	BGC	E	1	12/12	0.67	0.42	63,66,71,74	0
5	GLC	E	2	11/12	0.67	0.35	52,57,62,65	0
4	GLC	D	3	11/12	0.68	0.49	51,54,63,90	0
5	GLC	E	5	11/12	0.75	0.29	46,49,58,66	0
4	GLC	D	2	11/12	0.79	0.22	40,45,51,52	0
4	GLC	F	3	11/12	0.86	0.29	36,38,48,90	0
4	GLC	D	1	12/12	0.86	0.19	30,32,39,39	0
5	GLC	E	3	11/12	0.87	0.13	44,45,48,51	0

*Continued on next page...*

Continued from previous page...

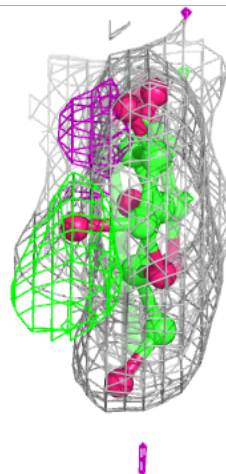
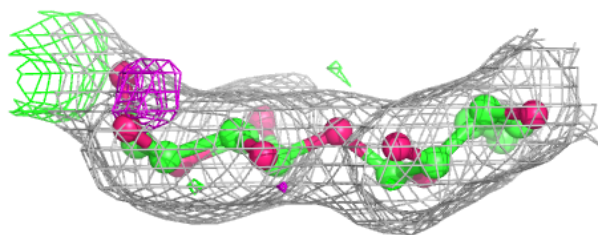
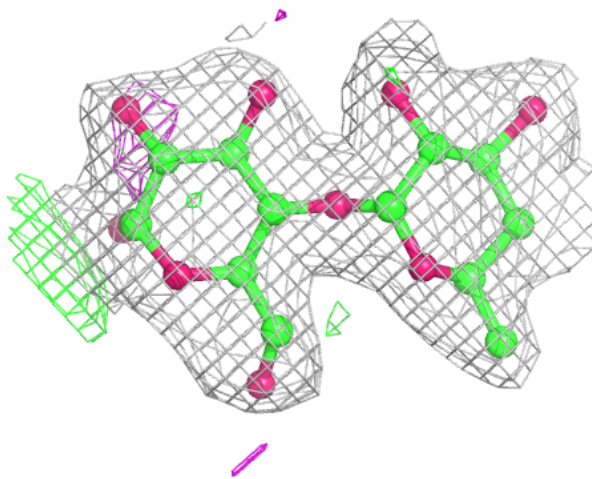
Mol	Type	Chain	Res	Atoms	RSCC	RSR	B-factors( $\text{\AA}^2$ )	Q<0.9
3	GLC	C	1	12/12	0.89	0.14	26,27,32,36	0
5	GLC	E	4	11/12	0.90	0.17	41,42,47,49	0
4	GLC	F	2	11/12	0.93	0.12	30,31,36,39	0
4	GLC	F	1	12/12	0.94	0.10	31,31,36,39	0
3	G6D	C	2	9/11	0.95	0.11	22,23,26,28	0
2	GLC	B	2	11/12	0.95	0.14	19,20,25,30	0
2	GLC	B	1	12/12	0.95	0.10	16,18,23,29	0

The following is a graphical depiction of the model fit to experimental electron density for oligosaccharide. Each fit is shown from different orientation to approximate a three-dimensional view.



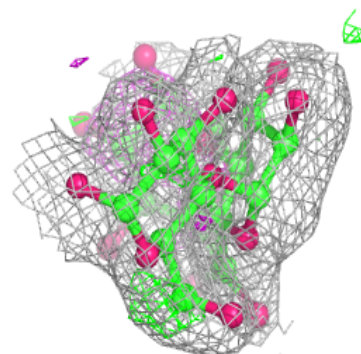
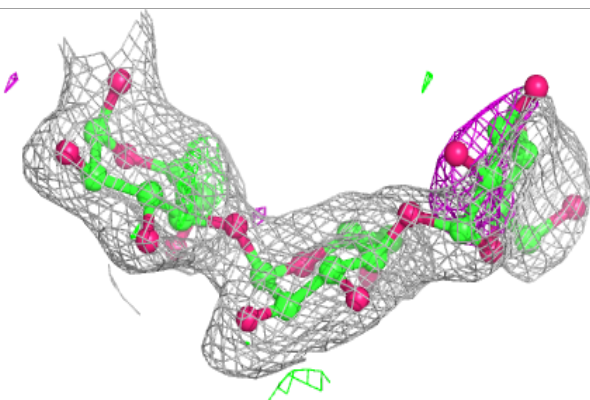
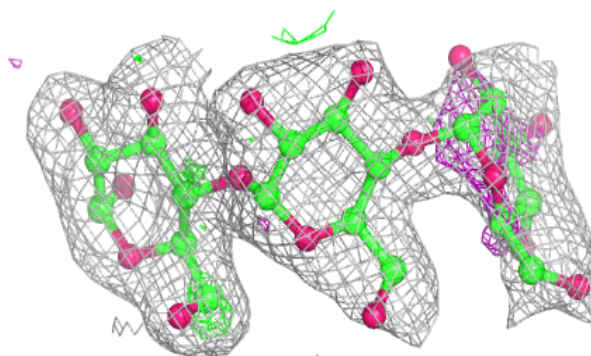
**Electron density around Chain C:**

$2mF_o-DF_c$  (at 0.7 rmsd) in gray  
 $mF_o-DF_c$  (at 3 rmsd) in purple (negative)  
and green (positive)

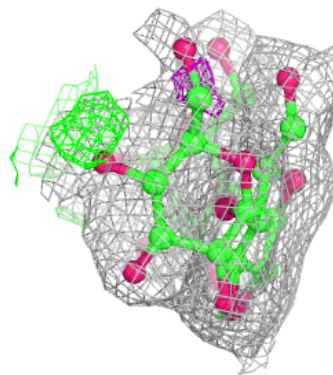
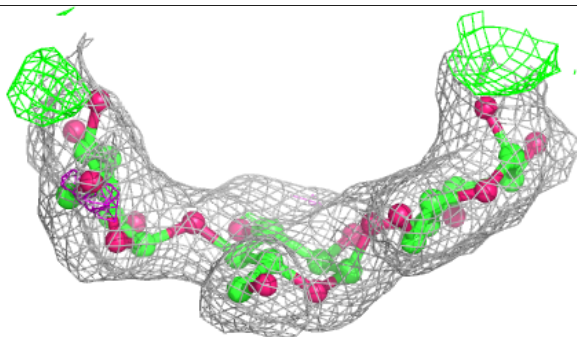
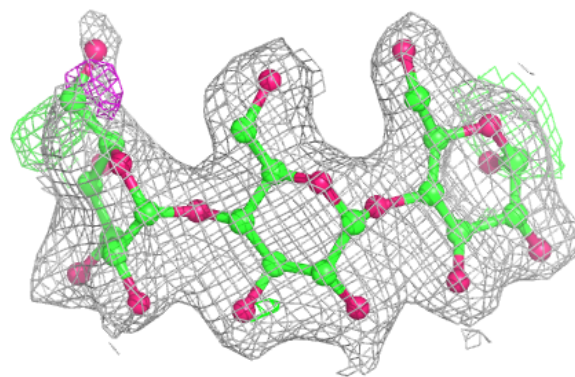


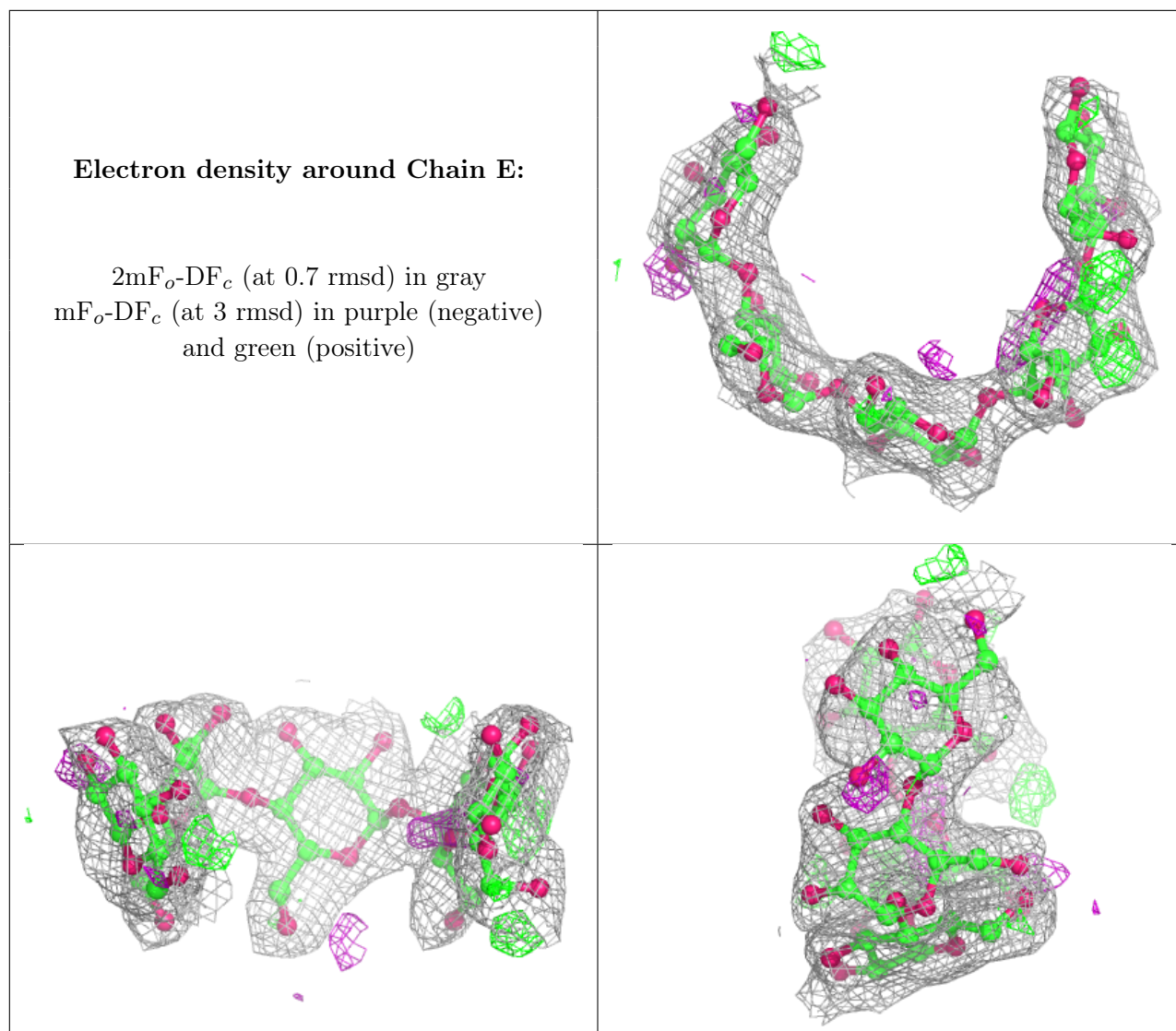
**Electron density around Chain D:**

$2mF_o-DF_c$  (at 0.7 rmsd) in gray  
 $mF_o-DF_c$  (at 3 rmsd) in purple (negative)  
and green (positive)

**Electron density around Chain F:**

$2mF_o-DF_c$  (at 0.7 rmsd) in gray  
 $mF_o-DF_c$  (at 3 rmsd) in purple (negative)  
and green (positive)





## 6.4 Ligands [i](#)

In the following table, the Atoms column lists the number of modelled atoms in the group and the number defined in the chemical component dictionary. The B-factors column lists the minimum, median, 95<sup>th</sup> percentile and maximum values of B factors of atoms in the group. The column labelled 'Q<0.9' lists the number of atoms with occupancy less than 0.9.

Mol	Type	Chain	Res	Atoms	RSCC	RSR	B-factors(Å <sup>2</sup> )	Q<0.9
7	ADH	A	693	11/11	0.86	0.20	25,26,30,35	0
6	CA	A	688	1/1	0.99	0.06	15,15,15,15	0
6	CA	A	687	1/1	0.99	0.04	24,24,24,24	0

## 6.5 Other polymers [i](#)

There are no such residues in this entry.