



# Full wwPDB X-ray Structure Validation Report ⓘ

Sep 18, 2023 – 10:54 PM EDT

PDB ID : 5DUL  
Title : 1-deoxy-D-xylulose 5-phosphate reductoisomerase from *Yersinia pestis* in complex with NADPH  
Authors : Osipiuk, J.; Mulligan, R.; Stam, J.; Anderson, W.F.; Joachimiak, A.; Center for Structural Genomics of Infectious Diseases (CSGID)  
Deposited on : 2015-09-18  
Resolution : 2.60 Å(reported)

This is a Full wwPDB X-ray Structure Validation Report for a publicly released PDB entry.

We welcome your comments at [validation@mail.wwpdb.org](mailto:validation@mail.wwpdb.org)

A user guide is available at

<https://www.wwpdb.org/validation/2017/XrayValidationReportHelp>

with specific help available everywhere you see the ⓘ symbol.

The types of validation reports are described at

<http://www.wwpdb.org/validation/2017/FAQs#types>.

---

The following versions of software and data (see [references ⓘ](#)) were used in the production of this report:

MolProbity : 4.02b-467  
Mogul : 1.8.5 (274361), CSD as541be (2020)  
Xtrriage (Phenix) : 1.13  
EDS : 2.35.1  
buster-report : 1.1.7 (2018)  
Percentile statistics : 20191225.v01 (using entries in the PDB archive December 25th 2019)  
Refmac : 5.8.0158  
CCP4 : 7.0.044 (Gargrove)  
Ideal geometry (proteins) : Engh & Huber (2001)  
Ideal geometry (DNA, RNA) : Parkinson et al. (1996)  
Validation Pipeline (wwPDB-VP) : 2.35.1

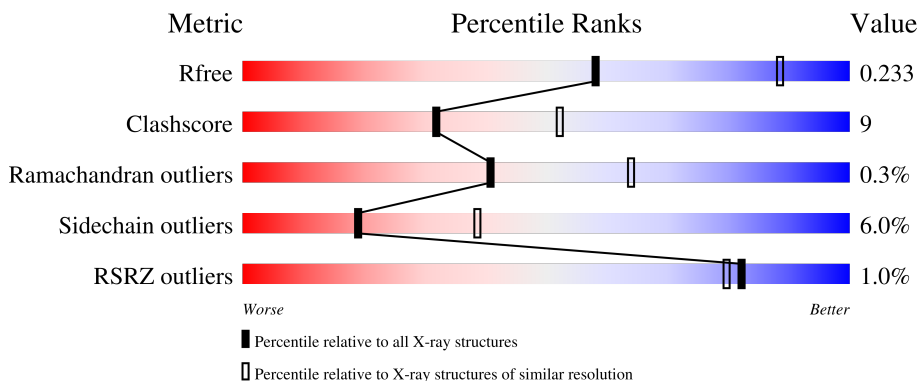
# 1 Overall quality at a glance

The following experimental techniques were used to determine the structure:

*X-RAY DIFFRACTION*

The reported resolution of this entry is 2.60 Å.

Percentile scores (ranging between 0-100) for global validation metrics of the entry are shown in the following graphic. The table shows the number of entries on which the scores are based.



Metric	Whole archive (#Entries)	Similar resolution (#Entries, resolution range(Å))
$R_{free}$	130704	3163 (2.60-2.60)
Clashscore	141614	3518 (2.60-2.60)
Ramachandran outliers	138981	3455 (2.60-2.60)
Sidechain outliers	138945	3455 (2.60-2.60)
RSRZ outliers	127900	3104 (2.60-2.60)

The table below summarises the geometric issues observed across the polymeric chains and their fit to the electron density. The red, orange, yellow and green segments of the lower bar indicate the fraction of residues that contain outliers for  $\geq 3$ , 2, 1 and 0 types of geometric quality criteria respectively. A grey segment represents the fraction of residues that are not modelled. The numeric value for each fraction is indicated below the corresponding segment, with a dot representing fractions  $\leq 5\%$ . The upper red bar (where present) indicates the fraction of residues that have poor fit to the electron density. The numeric value is given above the bar.

Mol	Chain	Length	Quality of chain
1	A	401	 % 73% 19% • 6%
1	B	401	 74% 22% • •
1	C	401	 2% 69% 20% • 8%
1	D	401	 75% 20% • •

## 2 Entry composition [i](#)

There are 3 unique types of molecules in this entry. The entry contains 11690 atoms, of which 0 are hydrogens and 0 are deuteriums.

In the tables below, the ZeroOcc column contains the number of atoms modelled with zero occupancy, the AltConf column contains the number of residues with at least one atom in alternate conformation and the Trace column contains the number of residues modelled with at most 2 atoms.

- Molecule 1 is a protein called 1-deoxy-D-xylulose 5-phosphate reductoisomerase.

Mol	Chain	Residues	Atoms					ZeroOcc	AltConf	Trace
			Total	C	N	O	S			
1	A	375	2830	1771	494	546	19	0	0	0
1	B	390	2947	1843	514	570	20	0	0	0
1	C	367	2774	1735	482	538	19	0	0	0
1	D	387	2930	1832	511	567	20	0	0	0

There are 12 discrepancies between the modelled and reference sequences:

Chain	Residue	Modelled	Actual	Comment	Reference
A	-2	SER	-	expression tag	UNP Q8ZH62
A	-1	ASN	-	expression tag	UNP Q8ZH62
A	0	ALA	-	expression tag	UNP Q8ZH62
B	-2	SER	-	expression tag	UNP Q8ZH62
B	-1	ASN	-	expression tag	UNP Q8ZH62
B	0	ALA	-	expression tag	UNP Q8ZH62
C	-2	SER	-	expression tag	UNP Q8ZH62
C	-1	ASN	-	expression tag	UNP Q8ZH62
C	0	ALA	-	expression tag	UNP Q8ZH62
D	-2	SER	-	expression tag	UNP Q8ZH62
D	-1	ASN	-	expression tag	UNP Q8ZH62
D	0	ALA	-	expression tag	UNP Q8ZH62

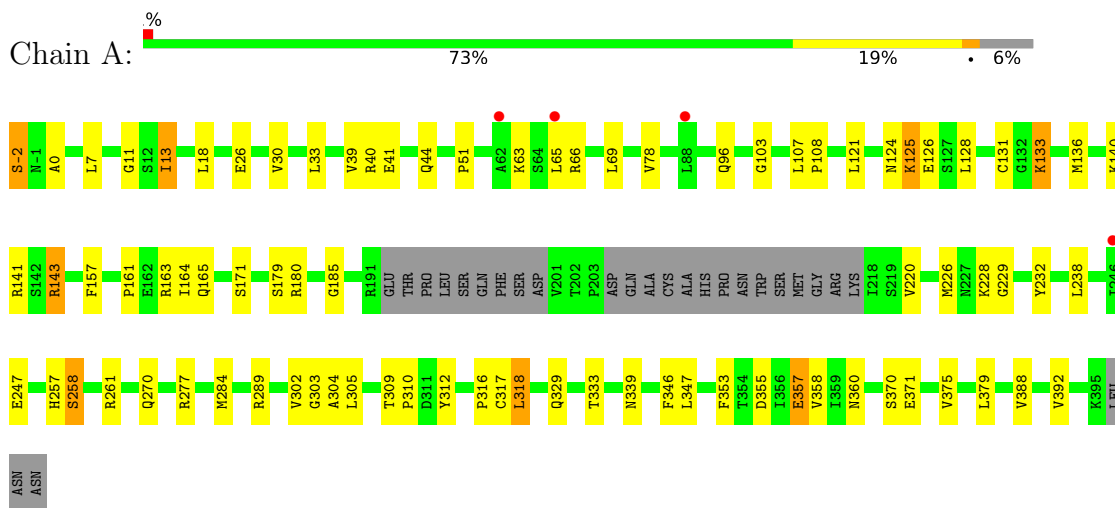
- Molecule 2 is NADPH DIHYDRO-NICOTINAMIDE-ADENINE-DINUCLEOTIDE PHOSPHATE (three-letter code: NDP) (formula: C<sub>21</sub>H<sub>30</sub>N<sub>7</sub>O<sub>17</sub>P<sub>3</sub>).



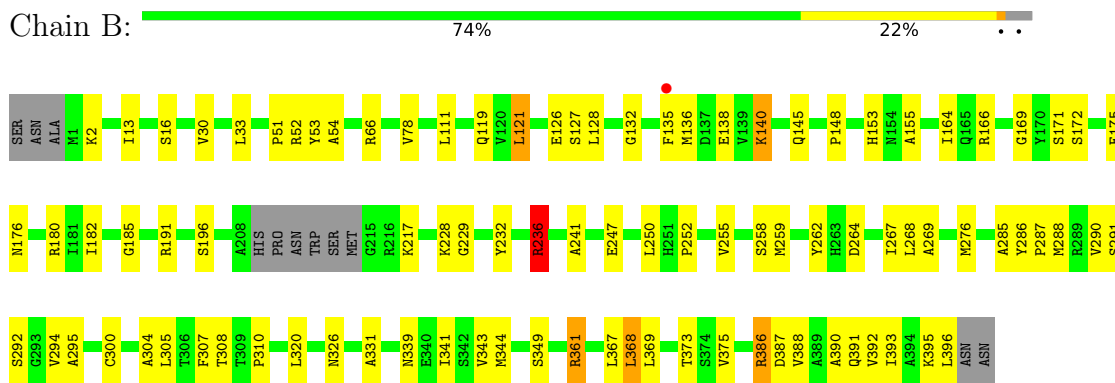
### 3 Residue-property plots [i](#)

These plots are drawn for all protein, RNA, DNA and oligosaccharide chains in the entry. The first graphic for a chain summarises the proportions of the various outlier classes displayed in the second graphic. The second graphic shows the sequence view annotated by issues in geometry and electron density. Residues are color-coded according to the number of geometric quality criteria for which they contain at least one outlier: green = 0, yellow = 1, orange = 2 and red = 3 or more. A red dot above a residue indicates a poor fit to the electron density ( $RSRZ > 2$ ). Stretches of 2 or more consecutive residues without any outlier are shown as a green connector. Residues present in the sample, but not in the model, are shown in grey.

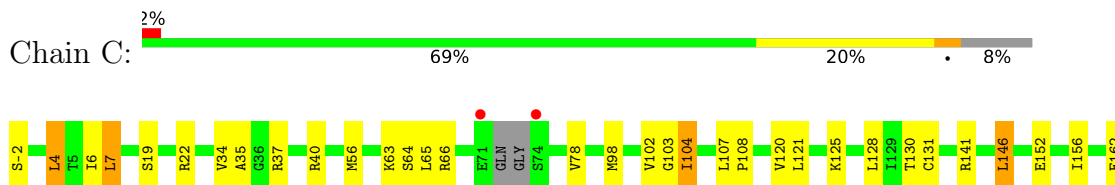
- Molecule 1: 1-deoxy-D-xylulose 5-phosphate reductoisomerase

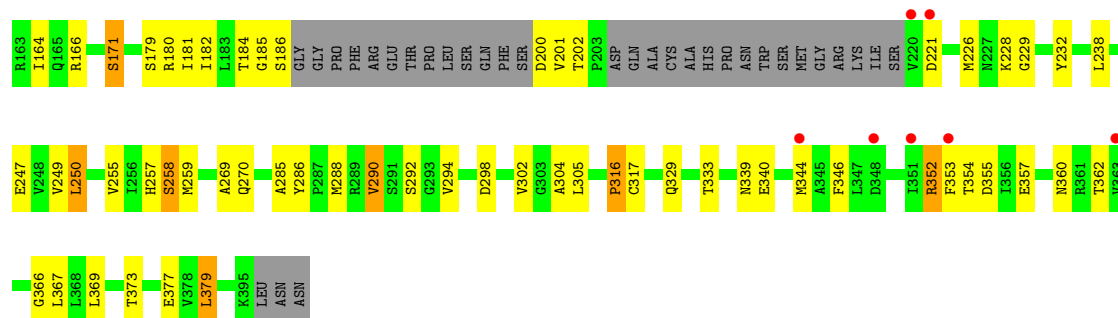


- Molecule 1: 1-deoxy-D-xylulose 5-phosphate reductoisomerase



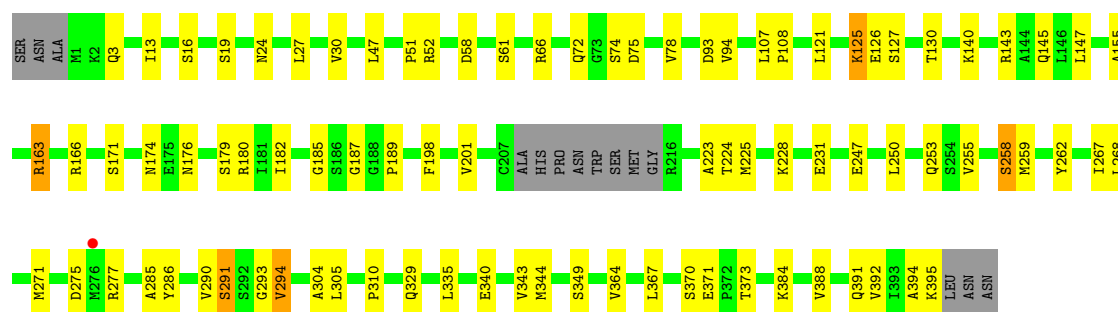
- Molecule 1: 1-deoxy-D-xylulose 5-phosphate reductoisomerase





● Molecule 1: 1-deoxy-D-xylulose 5-phosphate reductoisomerase

Chain D: 75% 20% ..



## 4 Data and refinement statistics i

Property	Value	Source
Space group	P 32	Depositor
Cell constants a, b, c, $\alpha$ , $\beta$ , $\gamma$	121.31Å 121.31Å 86.83Å 90.00° 90.00° 120.00°	Depositor
Resolution (Å)	35.02 – 2.60 35.02 – 2.60	Depositor EDS
% Data completeness (in resolution range)	99.4 (35.02-2.60) 99.4 (35.02-2.60)	Depositor EDS
$R_{merge}$	0.11	Depositor
$R_{sym}$	(Not available)	Depositor
$\langle I/\sigma(I) \rangle$ <sup>1</sup>	3.11 (at 2.61Å)	Xtrriage
Refinement program	REFMAC 5.8.0073	Depositor
R, $R_{free}$	0.194 , 0.238 0.190 , 0.233	Depositor DCC
$R_{free}$ test set	2187 reflections (5.02%)	wwPDB-VP
Wilson B-factor (Å <sup>2</sup> )	55.4	Xtrriage
Anisotropy	0.701	Xtrriage
Bulk solvent $k_{sol}$ (e/Å <sup>3</sup> ), $B_{sol}$ (Å <sup>2</sup> )	0.32 , 41.8	EDS
L-test for twinning <sup>2</sup>	$\langle  L  \rangle = 0.50$ , $\langle L^2 \rangle = 0.33$	Xtrriage
Estimated twinning fraction	0.019 for -h,-k,l 0.468 for h,-h-k,-l 0.017 for -k,-h,-l	Xtrriage
Reported twinning fraction	0.558 for H, K, L 0.442 for K, H, -L	Depositor
Outliers	0 of 43527 reflections	Xtrriage
$F_o, F_c$ correlation	0.96	EDS
Total number of atoms	11690	wwPDB-VP
Average B, all atoms (Å <sup>2</sup> )	76.0	wwPDB-VP

Xtrriage's analysis on translational NCS is as follows: *The largest off-origin peak in the Patterson function is 3.99% of the height of the origin peak. No significant pseudotranslation is detected.*

<sup>1</sup>Intensities estimated from amplitudes.

<sup>2</sup>Theoretical values of  $\langle |L| \rangle$ ,  $\langle L^2 \rangle$  for acentric reflections are 0.5, 0.333 respectively for untwinned datasets, and 0.375, 0.2 for perfectly twinned datasets.

## 5 Model quality [i](#)

### 5.1 Standard geometry [i](#)

Bond lengths and bond angles in the following residue types are not validated in this section: NDP

The Z score for a bond length (or angle) is the number of standard deviations the observed value is removed from the expected value. A bond length (or angle) with  $|Z| > 5$  is considered an outlier worth inspection. RMSZ is the root-mean-square of all Z scores of the bond lengths (or angles).

Mol	Chain	Bond lengths		Bond angles	
		RMSZ	# Z  >5	RMSZ	# Z  >5
1	A	0.53	0/2868	0.73	1/3885 (0.0%)
1	B	0.56	0/2988	0.76	1/4048 (0.0%)
1	C	0.51	0/2809	0.71	0/3805
1	D	0.55	0/2971	0.75	1/4025 (0.0%)
All	All	0.54	0/11636	0.74	3/15763 (0.0%)

Chiral center outliers are detected by calculating the chiral volume of a chiral center and verifying if the center is modelled as a planar moiety or with the opposite hand. A planarity outlier is detected by checking planarity of atoms in a peptide group, atoms in a mainchain group or atoms of a sidechain that are expected to be planar.

Mol	Chain	#Chirality outliers	#Planarity outliers
1	D	0	2

There are no bond length outliers.

All (3) bond angle outliers are listed below:

Mol	Chain	Res	Type	Atoms	Z	Observed( $^{\circ}$ )	Ideal( $^{\circ}$ )
1	B	236	ARG	NE-CZ-NH1	-5.79	117.40	120.30
1	A	277	ARG	NE-CZ-NH2	-5.47	117.56	120.30
1	D	163	ARG	NE-CZ-NH1	5.42	123.01	120.30

There are no chirality outliers.

All (2) planarity outliers are listed below:

Mol	Chain	Res	Type	Group
1	D	293	GLY	Peptide
1	D	294	VAL	Peptide



## 5.2 Too-close contacts

In the following table, the Non-H and H(model) columns list the number of non-hydrogen atoms and hydrogen atoms in the chain respectively. The H(added) column lists the number of hydrogen atoms added and optimized by MolProbity. The Clashes column lists the number of clashes within the asymmetric unit, whereas Symm-Clashes lists symmetry-related clashes.

Mol	Chain	Non-H	H(model)	H(added)	Clashes	Symm-Clashes
1	A	2830	0	2876	49	0
1	B	2947	0	2990	67	0
1	C	2774	0	2817	63	0
1	D	2930	0	2971	50	0
2	A	48	0	26	3	0
2	B	48	0	26	1	0
2	C	48	0	26	0	0
2	D	48	0	26	3	0
3	A	6	0	0	0	0
3	B	4	0	0	0	0
3	C	2	0	0	0	0
3	D	5	0	0	0	0
All	All	11690	0	11758	209	0

The all-atom clashscore is defined as the number of clashes found per 1000 atoms (including hydrogen atoms). The all-atom clashscore for this structure is 9.

All (209) close contacts within the same asymmetric unit are listed below, sorted by their clash magnitude.

Atom-1	Atom-2	Interatomic distance (Å)	Clash overlap (Å)
1:C:304:ALA:HB1	1:D:304:ALA:HB1	1.66	0.77
1:D:388:VAL:O	1:D:392:VAL:HG23	1.85	0.75
1:B:341:ILE:HD11	1:B:386:ARG:HG2	1.68	0.74
1:B:166:ARG:HD3	1:D:143:ARG:NE	2.03	0.74
1:B:388:VAL:O	1:B:392:VAL:HG23	1.87	0.74
1:D:228:LYS:NZ	1:D:231:GLU:OE1	2.17	0.73
1:C:329:GLN:O	1:C:333:THR:OG1	2.06	0.73
1:B:16:SER:OG	1:B:276:MET:SD	2.47	0.72
1:B:320:LEU:HD13	1:B:361:ARG:NH1	2.06	0.70
1:B:341:ILE:HG22	1:B:393:ILE:HD11	1.75	0.68
1:D:275:ASP:OD1	1:D:277:ARG:NH1	2.26	0.68
1:B:166:ARG:HD3	1:D:143:ARG:HE	1.59	0.68
1:A:140:LYS:O	1:A:143:ARG:NE	2.26	0.68
1:C:257:HIS:O	1:C:258:SER:OG	2.11	0.67
1:B:140:LYS:HD2	1:C:166:ARG:CD	2.25	0.66

*Continued on next page...*

*Continued from previous page...*

Atom-1	Atom-2	Interatomic distance (Å)	Clash overlap (Å)
1:D:66:ARG:NH1	1:D:78:VAL:O	2.26	0.66
1:B:2:LYS:NZ	1:B:119:GLN:OE1	2.29	0.66
1:B:166:ARG:HH12	1:B:287:PRO:HG3	1.60	0.66
1:B:172:SER:OG	1:B:175:GLU:HG2	1.96	0.65
1:C:185:GLY:HA3	1:C:228:LYS:CE	2.27	0.64
1:B:250:LEU:HD11	1:B:310:PRO:HB3	1.80	0.64
1:A:316:PRO:HB2	1:A:357:GLU:HG3	1.79	0.64
1:C:285:ALA:HB2	1:C:290:VAL:HG22	1.79	0.64
1:A:185:GLY:HA3	1:A:228:LYS:HE3	1.80	0.64
1:A:329:GLN:O	1:A:333:THR:OG1	2.15	0.63
1:A:339:ASN:OD1	1:A:360:ASN:ND2	2.31	0.63
1:C:201:VAL:HG12	1:C:202:THR:O	1.97	0.63
1:C:104:ILE:CG2	1:C:379:LEU:HD11	2.28	0.63
1:D:187:GLY:HA2	1:D:225:MET:CE	2.29	0.63
1:A:355:ASP:O	1:A:358:VAL:HG22	1.99	0.62
1:C:180:ARG:HD2	1:C:247:GLU:OE2	1.99	0.62
1:B:259:MET:HG2	1:B:269:ALA:HB2	1.82	0.62
1:C:4:LEU:HD22	1:C:6:ILE:HG12	1.80	0.61
1:A:257:HIS:O	1:A:258:SER:OG	2.16	0.61
1:D:187:GLY:HA2	1:D:225:MET:HE3	1.82	0.60
1:C:104:ILE:HG21	1:C:379:LEU:HD11	1.83	0.60
1:C:65:LEU:HD23	1:C:78:VAL:HG11	1.84	0.59
1:C:128:LEU:HD11	1:C:238:LEU:HD13	1.85	0.59
1:C:186:SER:O	1:C:250:LEU:HD13	2.02	0.58
1:A:133:LYS:HB2	1:A:329:GLN:NE2	2.19	0.58
1:B:185:GLY:HA3	1:B:228:LYS:HE3	1.84	0.58
1:C:226:MET:SD	1:C:317:CYS:HB3	2.44	0.58
1:D:277:ARG:HH12	1:D:294:VAL:HG21	1.68	0.58
1:B:331:ALA:HA	1:B:367:LEU:HD11	1.86	0.57
1:D:253:GLN:OE1	1:D:305:LEU:HA	2.04	0.56
1:B:155:ALA:HB3	1:B:258:SER:HB2	1.87	0.56
1:A:41:GLU:O	1:A:44:GLN:HG2	2.06	0.56
1:B:52:ARG:NH1	1:B:53:TYR:OH	2.38	0.56
1:A:161:PRO:HD2	1:A:164:ILE:HD12	1.86	0.56
1:A:304:ALA:HB1	1:B:304:ALA:HB1	1.87	0.55
1:C:316:PRO:HB2	1:C:357:GLU:HG3	1.87	0.55
1:D:155:ALA:HB3	1:D:258:SER:HB2	1.87	0.55
1:D:329:GLN:N	1:D:371:GLU:OE1	2.35	0.55
1:B:331:ALA:HA	1:B:367:LEU:CD1	2.37	0.55
1:C:255:VAL:HG21	1:C:305:LEU:HD21	1.88	0.55
1:B:236:ARG:NH1	1:B:326:ASN:OD1	2.40	0.55

*Continued on next page...*

*Continued from previous page...*

Atom-1	Atom-2	Interatomic distance (Å)	Clash overlap (Å)
1:B:140:LYS:HD2	1:C:166:ARG:NE	2.22	0.54
1:B:368:LEU:C	1:B:369:LEU:HD12	2.28	0.54
1:B:140:LYS:CD	1:C:166:ARG:NE	2.71	0.54
1:D:13:ILE:HD11	2:D:701:NDP:C3N	2.37	0.54
1:A:180:ARG:HD3	1:A:247:GLU:OE2	2.07	0.54
1:B:250:LEU:O	1:B:307:PHE:HA	2.08	0.53
1:C:292:SER:HB3	1:C:294:VAL:HG23	1.91	0.53
1:C:352:ARG:O	1:C:355:ASP:HB2	2.09	0.53
1:D:125:LYS:HD3	2:D:701:NDP:H1D	1.91	0.53
1:C:98:MET:HA	1:C:121:LEU:HB2	1.91	0.53
1:A:0:ALA:HB2	1:D:174:ASN:HB2	1.90	0.52
1:A:346:PHE:CZ	1:A:353:PHE:HB2	2.45	0.52
1:A:375:VAL:HG12	1:A:379:LEU:HD13	1.92	0.52
1:A:388:VAL:O	1:A:392:VAL:HG23	2.10	0.52
1:C:185:GLY:HA3	1:C:228:LYS:HE2	1.91	0.52
1:C:288:MET:HE1	1:D:163:ARG:HD2	1.91	0.52
1:C:367:LEU:HB3	1:C:369:LEU:HD21	1.92	0.52
1:B:369:LEU:HD12	1:B:369:LEU:N	2.25	0.51
1:B:373:THR:HG21	1:C:141:ARG:O	2.10	0.51
1:A:257:HIS:O	1:A:258:SER:CB	2.59	0.51
1:A:229:GLY:O	1:A:232:TYR:HB3	2.10	0.51
1:A:-2:SER:HB3	1:A:26:GLU:O	2.10	0.51
1:B:111:LEU:HD11	1:B:138:GLU:HG3	1.92	0.51
1:C:164:ILE:HD13	1:C:171:SER:HB2	1.92	0.51
1:C:185:GLY:HA3	1:C:228:LYS:HE3	1.91	0.51
1:C:107:LEU:HB2	1:C:108:PRO:HD3	1.92	0.51
1:B:128:LEU:HD23	1:B:132:GLY:HA2	1.92	0.50
1:B:166:ARG:CD	1:D:143:ARG:NE	2.74	0.50
1:A:309:THR:HG23	1:B:300:CYS:SG	2.52	0.50
1:B:250:LEU:CD1	1:B:310:PRO:HB3	2.41	0.50
1:C:346:PHE:CZ	1:C:353:PHE:HB2	2.47	0.50
1:B:236:ARG:HD2	1:B:241:ALA:O	2.11	0.49
1:A:128:LEU:HD21	1:A:136:MET:CE	2.42	0.49
1:D:198:PHE:HA	1:D:201:VAL:HG23	1.93	0.49
1:B:13:ILE:HD11	2:B:701:NDP:C2N	2.41	0.49
1:A:302:VAL:HG12	1:A:303:GLY:O	2.11	0.49
1:B:285:ALA:O	1:B:286:TYR:C	2.49	0.49
1:D:343:VAL:O	1:D:344:MET:C	2.51	0.49
1:D:185:GLY:CA	1:D:228:LYS:HE3	2.43	0.49
1:A:133:LYS:HB2	1:A:329:GLN:CD	2.32	0.49
1:D:126:GLU:O	1:D:127:SER:C	2.49	0.49

*Continued on next page...*

*Continued from previous page...*

Atom-1	Atom-2	Interatomic distance (Å)	Clash overlap (Å)
1:C:19:SER:HA	1:C:22:ARG:NH2	2.28	0.49
1:A:226:MET:HG2	1:A:317:CYS:SG	2.52	0.49
1:C:270:GLN:HA	1:D:267:ILE:O	2.12	0.49
1:B:136:MET:CE	1:B:169:GLY:HA3	2.43	0.49
1:C:184:THR:HA	1:C:249:VAL:O	2.13	0.49
1:A:13:ILE:HD11	2:A:701:NDP:C3N	2.42	0.48
1:A:180:ARG:CD	1:A:247:GLU:OE2	2.61	0.48
1:A:11:GLY:N	2:A:701:NDP:O3B	2.46	0.48
1:C:229:GLY:O	1:C:232:TYR:HB3	2.13	0.48
1:D:182:ILE:HB	1:D:259:MET:HB2	1.95	0.48
1:B:126:GLU:O	1:B:127:SER:C	2.50	0.48
1:C:102:VAL:HG22	1:C:103:GLY:N	2.28	0.48
1:A:226:MET:SD	1:A:317:CYS:HB3	2.54	0.48
1:D:277:ARG:HH22	1:D:294:VAL:HG23	1.79	0.48
1:A:289:ARG:HD2	1:B:264:ASP:OD2	2.13	0.48
1:C:4:LEU:HD22	1:C:6:ILE:CG1	2.44	0.47
1:B:387:ASP:O	1:B:388:VAL:C	2.52	0.47
1:C:130:THR:HG22	1:C:333:THR:HG23	1.96	0.47
1:C:259:MET:HB3	1:C:269:ALA:HB2	1.96	0.47
1:A:33:LEU:HD12	1:A:51:PRO:HG3	1.95	0.47
1:C:104:ILE:HG21	1:C:379:LEU:CD1	2.45	0.47
1:C:35:ALA:O	1:C:56:MET:HA	2.14	0.47
1:A:65:LEU:O	1:A:69:LEU:HG	2.15	0.47
1:C:156:ILE:HD13	1:C:181:ILE:CG2	2.44	0.47
1:D:145:GLN:HG3	1:D:147:LEU:HD11	1.97	0.47
1:B:140:LYS:CD	1:C:166:ARG:CD	2.93	0.46
1:B:339:ASN:O	1:B:343:VAL:HG23	2.14	0.46
1:A:270:GLN:HA	1:B:267:ILE:O	2.15	0.46
1:B:182:ILE:HB	1:B:259:MET:HB2	1.97	0.46
1:D:364:VAL:O	1:D:367:LEU:HB2	2.15	0.46
1:B:127:SER:HB3	1:B:135:PHE:CE1	2.50	0.46
1:C:182:ILE:HB	1:C:259:MET:HG3	1.97	0.46
1:D:163:ARG:NH2	1:D:176:ASN:O	2.39	0.46
1:B:255:VAL:HG21	1:B:305:LEU:CD2	2.45	0.46
1:C:180:ARG:HE	1:C:180:ARG:HB2	1.44	0.46
1:A:316:PRO:HB2	1:A:357:GLU:CG	2.45	0.46
1:B:259:MET:HG2	1:B:269:ALA:CB	2.45	0.46
1:B:175:GLU:HG3	1:C:288:MET:SD	2.55	0.46
1:C:340:GLU:O	1:C:344:MET:HG3	2.16	0.46
1:A:185:GLY:HA3	1:A:228:LYS:CE	2.46	0.46
1:D:107:LEU:HB2	1:D:108:PRO:HD3	1.98	0.45

*Continued on next page...*

*Continued from previous page...*

Atom-1	Atom-2	Interatomic distance (Å)	Clash overlap (Å)
1:A:39:VAL:HG13	1:A:65:LEU:HB2	1.99	0.45
1:D:3:GLN:HB2	1:D:94:VAL:HA	1.97	0.45
1:C:352:ARG:HG2	1:C:354:THR:HG22	1.97	0.45
1:D:47:LEU:HD21	1:D:72:GLN:HB2	1.98	0.45
1:B:164:ILE:HD11	1:B:176:ASN:HB2	1.99	0.45
1:C:104:ILE:HG23	1:C:379:LEU:HD11	1.97	0.45
1:C:373:THR:OG1	1:C:377:GLU:OE1	2.30	0.45
1:A:312:TYR:HE1	1:A:318:LEU:HD12	1.82	0.45
1:B:136:MET:HE1	1:B:169:GLY:HA3	1.99	0.45
1:C:362:THR:O	1:C:366:GLY:N	2.49	0.45
1:B:140:LYS:HD3	1:C:166:ARG:NE	2.32	0.45
1:D:180:ARG:HD3	1:D:247:GLU:HG2	1.98	0.45
1:D:24:ASN:OD1	1:D:290:VAL:HG11	2.17	0.44
1:D:290:VAL:CG1	1:D:291:SER:N	2.79	0.44
1:C:7:LEU:HD23	1:C:34:VAL:HG21	1.99	0.44
1:C:152:GLU:HG2	1:C:228:LYS:NZ	2.32	0.44
1:A:30:VAL:HG11	1:A:33:LEU:HD21	2.00	0.44
1:B:140:LYS:CD	1:C:166:ARG:HD3	2.48	0.44
1:A:371:GLU:OE2	1:A:371:GLU:HA	2.17	0.44
1:D:255:VAL:HG12	1:D:271:MET:HG2	2.00	0.44
1:D:290:VAL:HG12	1:D:291:SER:N	2.33	0.44
1:A:18:LEU:HD23	1:A:18:LEU:HA	1.88	0.43
1:A:125:LYS:HE2	2:A:701:NDP:C6N	2.47	0.43
1:A:103:GLY:HA2	1:A:126:GLU:OE2	2.18	0.43
1:B:30:VAL:HG12	1:B:51:PRO:HB3	1.99	0.43
1:C:63:LYS:HA	1:C:66:ARG:HD2	2.01	0.43
1:B:66:ARG:NH1	1:B:78:VAL:O	2.51	0.43
1:B:290:VAL:HG23	1:B:291:SER:O	2.18	0.43
1:A:302:VAL:CG1	1:A:305:LEU:HD21	2.49	0.43
1:B:217:LYS:HE3	1:B:344:MET:HB3	2.00	0.43
1:D:145:GLN:OE1	1:D:166:ARG:HA	2.19	0.43
1:B:229:GLY:O	1:B:232:TYR:HB3	2.19	0.42
1:B:180:ARG:HD3	1:B:247:GLU:HG2	2.02	0.42
1:C:156:ILE:HD13	1:C:181:ILE:HG23	1.99	0.42
1:C:186:SER:O	1:C:250:LEU:CD1	2.66	0.42
1:B:148:PRO:HB2	1:B:153:HIS:HB2	2.01	0.42
1:D:224:THR:O	1:D:225:MET:HB2	2.20	0.42
1:D:185:GLY:HA3	1:D:228:LYS:HE3	2.01	0.42
1:D:285:ALA:O	1:D:286:TYR:C	2.57	0.42
1:A:180:ARG:HB3	1:A:261:ARG:HD2	2.02	0.42
1:D:13:ILE:CD1	2:D:701:NDP:C2N	2.98	0.42

*Continued on next page...*

Continued from previous page...

Atom-1	Atom-2	Interatomic distance (Å)	Clash overlap (Å)
1:D:340:GLU:O	1:D:344:MET:HG3	2.20	0.42
1:A:180:ARG:HD3	1:A:247:GLU:CG	2.50	0.42
1:B:185:GLY:O	1:B:250:LEU:HA	2.20	0.42
1:B:121:LEU:CD1	1:B:121:LEU:N	2.83	0.41
1:A:107:LEU:O	1:A:108:PRO:C	2.58	0.41
1:A:220:VAL:CG2	1:A:347:LEU:HD11	2.50	0.41
1:D:24:ASN:HB3	1:D:27:LEU:HD12	2.02	0.41
1:A:66:ARG:NH2	1:A:78:VAL:O	2.53	0.41
1:B:140:LYS:HD2	1:C:166:ARG:HD3	2.00	0.41
1:B:262:TYR:CE2	1:B:268:LEU:HD12	2.55	0.41
1:D:391:GLN:O	1:D:394:ALA:HB3	2.20	0.41
1:D:47:LEU:HD21	1:D:72:GLN:CB	2.50	0.41
1:B:294:VAL:HG12	1:B:295:ALA:O	2.21	0.41
1:C:285:ALA:O	1:C:286:TYR:C	2.58	0.41
1:D:262:TYR:CE2	1:D:268:LEU:HD12	2.55	0.41
1:B:145:GLN:OE1	1:B:166:ARG:HA	2.20	0.41
1:C:120:VAL:HB	1:C:146:LEU:HD23	2.02	0.41
1:C:339:ASN:OD1	1:C:360:ASN:ND2	2.53	0.41
1:A:157:PHE:CZ	1:A:165:GLN:HB3	2.56	0.41
1:B:387:ASP:O	1:B:390:ALA:HB3	2.21	0.41
1:C:65:LEU:HD23	1:C:78:VAL:CG1	2.49	0.41
1:C:298:ASP:O	1:C:302:VAL:HG13	2.21	0.40
1:B:255:VAL:HG21	1:B:305:LEU:HD21	2.02	0.40
1:D:58:ASP:C	1:D:58:ASP:OD2	2.60	0.40
1:D:30:VAL:HG12	1:D:51:PRO:HB3	2.04	0.40
1:D:250:LEU:HD11	1:D:310:PRO:HB3	2.02	0.40
1:A:96:GLN:NE2	1:A:284:MET:O	2.46	0.40
1:B:33:LEU:O	1:B:54:ALA:HA	2.21	0.40
1:B:191:ARG:HD2	1:B:252:PRO:HG3	2.02	0.40
1:D:189:PRO:HD2	1:D:223:ALA:HA	2.03	0.40

There are no symmetry-related clashes.

## 5.3 Torsion angles [i](#)

### 5.3.1 Protein backbone [i](#)

In the following table, the Percentiles column shows the percent Ramachandran outliers of the chain as a percentile score with respect to all X-ray entries followed by that with respect to entries of similar resolution.

The Analysed column shows the number of residues for which the backbone conformation was analysed, and the total number of residues.

Mol	Chain	Analysed	Favoured	Allowed	Outliers	Percentiles	
1	A	369/401 (92%)	349 (95%)	18 (5%)	2 (0%)	29	52
1	B	386/401 (96%)	361 (94%)	24 (6%)	1 (0%)	41	64
1	C	359/401 (90%)	339 (94%)	19 (5%)	1 (0%)	41	64
1	D	383/401 (96%)	359 (94%)	24 (6%)	0	100	100
All	All	1497/1604 (93%)	1408 (94%)	85 (6%)	4 (0%)	41	64

All (4) Ramachandran outliers are listed below:

Mol	Chain	Res	Type
1	B	375	VAL
1	A	258	SER
1	A	124	ASN
1	C	258	SER

### 5.3.2 Protein sidechains [i](#)

In the following table, the Percentiles column shows the percent sidechain outliers of the chain as a percentile score with respect to all X-ray entries followed by that with respect to entries of similar resolution.

The Analysed column shows the number of residues for which the sidechain conformation was analysed, and the total number of residues.

Mol	Chain	Analysed	Rotameric	Outliers	Percentiles	
1	A	308/331 (93%)	289 (94%)	19 (6%)	18	37
1	B	321/331 (97%)	306 (95%)	15 (5%)	26	50
1	C	303/331 (92%)	283 (93%)	20 (7%)	16	33
1	D	320/331 (97%)	299 (93%)	21 (7%)	16	33
All	All	1252/1324 (95%)	1177 (94%)	75 (6%)	19	39

All (75) residues with a non-rotameric sidechain are listed below:

Mol	Chain	Res	Type
1	A	-2	SER
1	A	7	LEU
1	A	13	ILE
1	A	40	ARG

*Continued on next page...*

*Continued from previous page...*

<b>Mol</b>	<b>Chain</b>	<b>Res</b>	<b>Type</b>
1	A	63	LYS
1	A	121	LEU
1	A	125	LYS
1	A	131	CYS
1	A	133	LYS
1	A	141	ARG
1	A	143	ARG
1	A	163	ARG
1	A	171	SER
1	A	179	SER
1	A	238	LEU
1	A	310	PRO
1	A	318	LEU
1	A	357	GLU
1	A	370	SER
1	B	121	LEU
1	B	140	LYS
1	B	171	SER
1	B	196	SER
1	B	236	ARG
1	B	288	MET
1	B	292	SER
1	B	308	THR
1	B	349	SER
1	B	361	ARG
1	B	368	LEU
1	B	386	ARG
1	B	391	GLN
1	B	395	LYS
1	B	396	LEU
1	C	-2	SER
1	C	4	LEU
1	C	7	LEU
1	C	37	ARG
1	C	40	ARG
1	C	64	SER
1	C	104	ILE
1	C	125	LYS
1	C	131	CYS
1	C	146	LEU
1	C	162	GLU
1	C	171	SER

*Continued on next page...*



*Continued from previous page...*

Mol	Chain	Res	Type
1	C	179	SER
1	C	200	ASP
1	C	221	ASP
1	C	250	LEU
1	C	290	VAL
1	C	316	PRO
1	C	352	ARG
1	C	379	LEU
1	D	16	SER
1	D	19	SER
1	D	52	ARG
1	D	61	SER
1	D	74	SER
1	D	75	ASP
1	D	93	ASP
1	D	121	LEU
1	D	125	LYS
1	D	130	THR
1	D	140	LYS
1	D	171	SER
1	D	179	SER
1	D	258	SER
1	D	291	SER
1	D	335	LEU
1	D	349	SER
1	D	370	SER
1	D	373	THR
1	D	384	LYS
1	D	395	LYS

Sometimes sidechains can be flipped to improve hydrogen bonding and reduce clashes. All (4) such sidechains are listed below:

Mol	Chain	Res	Type
1	B	165	GLN
1	B	270	GLN
1	C	15	ASN
1	D	165	GLN

### 5.3.3 RNA

There are no RNA molecules in this entry.

## 5.4 Non-standard residues in protein, DNA, RNA chains [i](#)

There are no non-standard protein/DNA/RNA residues in this entry.

## 5.5 Carbohydrates [i](#)

There are no monosaccharides in this entry.

## 5.6 Ligand geometry [i](#)

4 ligands are modelled in this entry.

In the following table, the Counts columns list the number of bonds (or angles) for which Mogul statistics could be retrieved, the number of bonds (or angles) that are observed in the model and the number of bonds (or angles) that are defined in the Chemical Component Dictionary. The Link column lists molecule types, if any, to which the group is linked. The Z score for a bond length (or angle) is the number of standard deviations the observed value is removed from the expected value. A bond length (or angle) with  $|Z| > 2$  is considered an outlier worth inspection. RMSZ is the root-mean-square of all Z scores of the bond lengths (or angles).

Mol	Type	Chain	Res	Link	Bond lengths			Bond angles		
					Counts	RMSZ	# Z  > 2	Counts	RMSZ	# Z  > 2
2	NDP	A	701	-	45,52,52	0.97	2 (4%)	53,80,80	1.56	11 (20%)
2	NDP	C	701	-	45,52,52	1.06	3 (6%)	53,80,80	1.34	9 (16%)
2	NDP	B	701	-	45,52,52	1.04	2 (4%)	53,80,80	1.48	9 (16%)
2	NDP	D	701	-	45,52,52	1.03	2 (4%)	53,80,80	1.38	8 (15%)

In the following table, the Chirals column lists the number of chiral outliers, the number of chiral centers analysed, the number of these observed in the model and the number defined in the Chemical Component Dictionary. Similar counts are reported in the Torsion and Rings columns. '-' means no outliers of that kind were identified.

Mol	Type	Chain	Res	Link	Chirals	Torsions	Rings
2	NDP	A	701	-	-	11/30/77/77	0/5/5/5
2	NDP	C	701	-	-	8/30/77/77	0/5/5/5
2	NDP	B	701	-	-	7/30/77/77	0/5/5/5
2	NDP	D	701	-	-	6/30/77/77	0/5/5/5

All (9) bond length outliers are listed below:

Mol	Chain	Res	Type	Atoms	Z	Observed(Å)	Ideal(Å)
2	A	701	NDP	C6N-C5N	3.66	1.39	1.33

*Continued on next page...*

*Continued from previous page...*

Mol	Chain	Res	Type	Atoms	Z	Observed(Å)	Ideal(Å)
2	B	701	NDP	C6N-C5N	3.55	1.39	1.33
2	D	701	NDP	C6N-C5N	3.51	1.39	1.33
2	C	701	NDP	C6N-C5N	2.97	1.38	1.33
2	C	701	NDP	P2B-O2B	2.66	1.64	1.59
2	C	701	NDP	C5A-C4A	2.66	1.48	1.40
2	D	701	NDP	C2A-N3A	2.64	1.36	1.32
2	A	701	NDP	C5A-C4A	2.41	1.47	1.40
2	B	701	NDP	C3B-C2B	-2.41	1.47	1.52

All (37) bond angle outliers are listed below:

Mol	Chain	Res	Type	Atoms	Z	Observed(°)	Ideal(°)
2	A	701	NDP	N3A-C2A-N1A	-4.24	122.05	128.68
2	D	701	NDP	N3A-C2A-N1A	-4.04	122.36	128.68
2	C	701	NDP	N3A-C2A-N1A	-4.01	122.41	128.68
2	B	701	NDP	N3A-C2A-N1A	-3.94	122.53	128.68
2	A	701	NDP	C1B-N9A-C4A	-3.27	120.90	126.64
2	B	701	NDP	O2A-PA-O1A	3.22	128.15	112.24
2	A	701	NDP	O2A-PA-O1A	3.19	128.03	112.24
2	C	701	NDP	O4D-C1D-N1N	3.02	113.97	108.06
2	D	701	NDP	C4A-C5A-N7A	-2.91	106.37	109.40
2	B	701	NDP	PN-O3-PA	-2.85	123.05	132.83
2	C	701	NDP	O2A-PA-O1A	2.83	126.21	112.24
2	A	701	NDP	O4D-C1D-N1N	2.82	113.56	108.06
2	A	701	NDP	O2N-PN-O1N	2.81	126.14	112.24
2	A	701	NDP	C3N-C7N-N7N	2.77	122.60	117.67
2	D	701	NDP	O2B-P2B-O1X	-2.74	98.83	109.39
2	B	701	NDP	C1B-N9A-C4A	-2.65	121.98	126.64
2	A	701	NDP	O2B-P2B-O1X	-2.64	99.20	109.39
2	A	701	NDP	C2A-N1A-C6A	2.62	123.23	118.75
2	A	701	NDP	O7N-C7N-C3N	-2.61	115.99	120.90
2	B	701	NDP	O5B-PA-O1A	-2.59	98.93	109.07
2	C	701	NDP	PN-O3-PA	-2.51	124.20	132.83
2	B	701	NDP	C4A-C5A-N7A	-2.51	106.78	109.40
2	D	701	NDP	O2A-PA-O1A	2.45	124.35	112.24
2	B	701	NDP	C2A-N1A-C6A	2.40	122.85	118.75
2	D	701	NDP	C5B-C4B-C3B	-2.40	106.20	115.18
2	A	701	NDP	PN-O3-PA	-2.37	124.69	132.83
2	A	701	NDP	C4A-C5A-N7A	-2.34	106.96	109.40
2	D	701	NDP	PN-O3-PA	-2.33	124.82	132.83
2	D	701	NDP	C1B-N9A-C4A	-2.23	122.72	126.64
2	B	701	NDP	C3B-C2B-C1B	-2.23	98.70	102.89

*Continued on next page...*

*Continued from previous page...*

Mol	Chain	Res	Type	Atoms	Z	Observed(°)	Ideal(°)
2	B	701	NDP	O7N-C7N-C3N	-2.22	116.72	120.90
2	C	701	NDP	C2A-N1A-C6A	2.22	122.55	118.75
2	C	701	NDP	C3D-C2D-C1D	-2.17	97.30	101.43
2	C	701	NDP	C1B-N9A-C4A	-2.16	122.85	126.64
2	C	701	NDP	O2N-PN-O1N	2.14	122.82	112.24
2	C	701	NDP	C3N-C7N-N7N	2.05	121.31	117.67
2	D	701	NDP	O3X-P2B-O2X	2.02	115.34	107.64

There are no chirality outliers.

All (32) torsion outliers are listed below:

Mol	Chain	Res	Type	Atoms
2	A	701	NDP	C5B-O5B-PA-O1A
2	A	701	NDP	C5B-O5B-PA-O3
2	A	701	NDP	O4B-C4B-C5B-O5B
2	A	701	NDP	C2B-O2B-P2B-O3X
2	C	701	NDP	C2B-O2B-P2B-O3X
2	D	701	NDP	C2B-O2B-P2B-O3X
2	C	701	NDP	PN-O3-PA-O1A
2	A	701	NDP	C2D-C1D-N1N-C6N
2	A	701	NDP	O4D-C1D-N1N-C6N
2	C	701	NDP	O4D-C1D-N1N-C6N
2	D	701	NDP	O4D-C1D-N1N-C6N
2	A	701	NDP	O4D-C1D-N1N-C2N
2	B	701	NDP	O4D-C1D-N1N-C6N
2	A	701	NDP	PN-O3-PA-O2A
2	B	701	NDP	PN-O3-PA-O1A
2	B	701	NDP	PN-O3-PA-O2A
2	C	701	NDP	PN-O3-PA-O2A
2	D	701	NDP	C2D-C1D-N1N-C6N
2	A	701	NDP	C2D-C1D-N1N-C2N
2	C	701	NDP	C2D-C1D-N1N-C6N
2	B	701	NDP	C2D-C1D-N1N-C6N
2	A	701	NDP	PN-O3-PA-O1A
2	C	701	NDP	O4D-C1D-N1N-C2N
2	B	701	NDP	C2B-O2B-P2B-O2X
2	B	701	NDP	O4B-C4B-C5B-O5B
2	D	701	NDP	O4B-C4B-C5B-O5B
2	D	701	NDP	PN-O3-PA-O2A
2	A	701	NDP	C5B-O5B-PA-O2A
2	B	701	NDP	C2N-C3N-C7N-N7N
2	D	701	NDP	C2N-C3N-C7N-N7N

*Continued on next page...*

*Continued from previous page...*

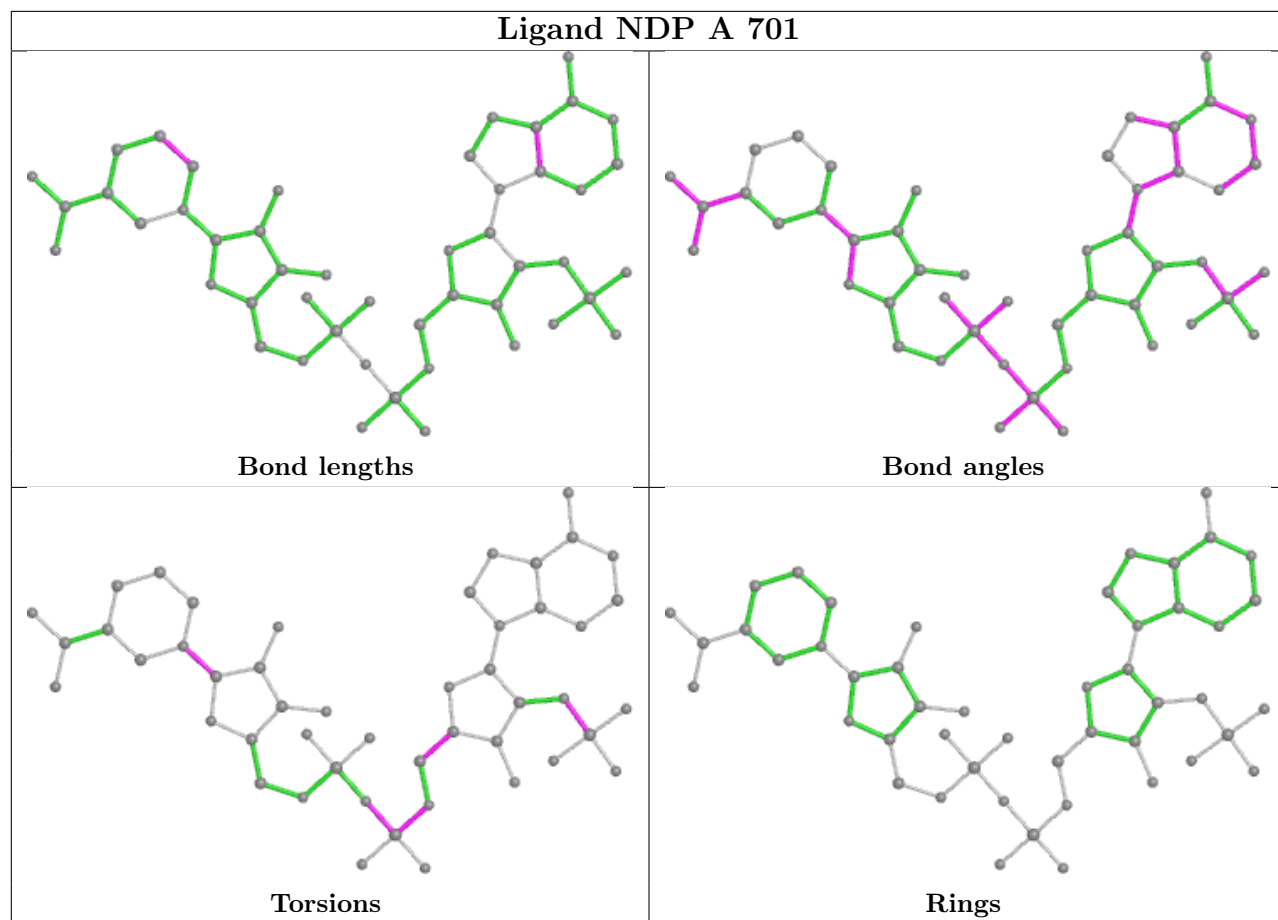
Mol	Chain	Res	Type	Atoms
2	C	701	NDP	O4B-C4B-C5B-O5B
2	C	701	NDP	C3B-C2B-O2B-P2B

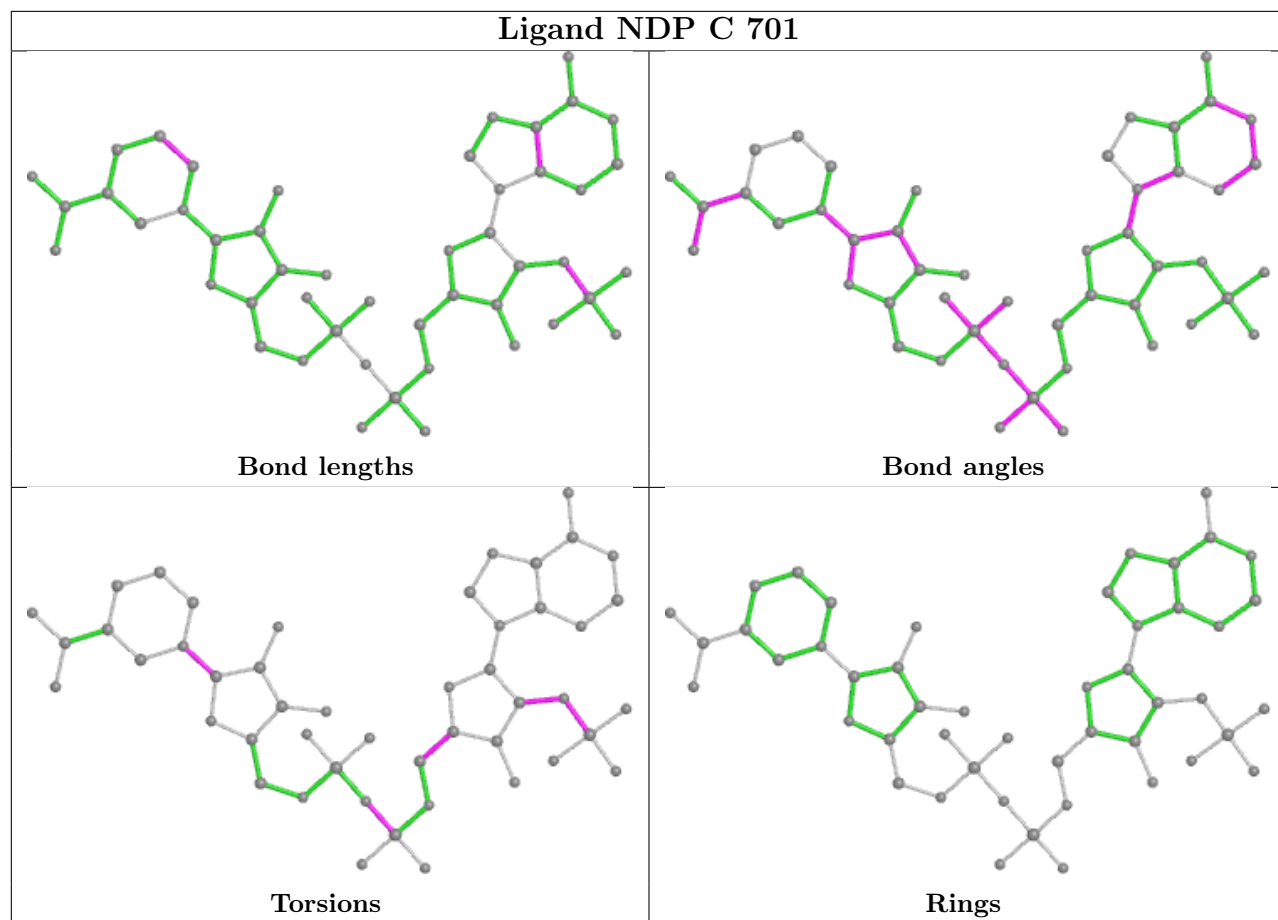
There are no ring outliers.

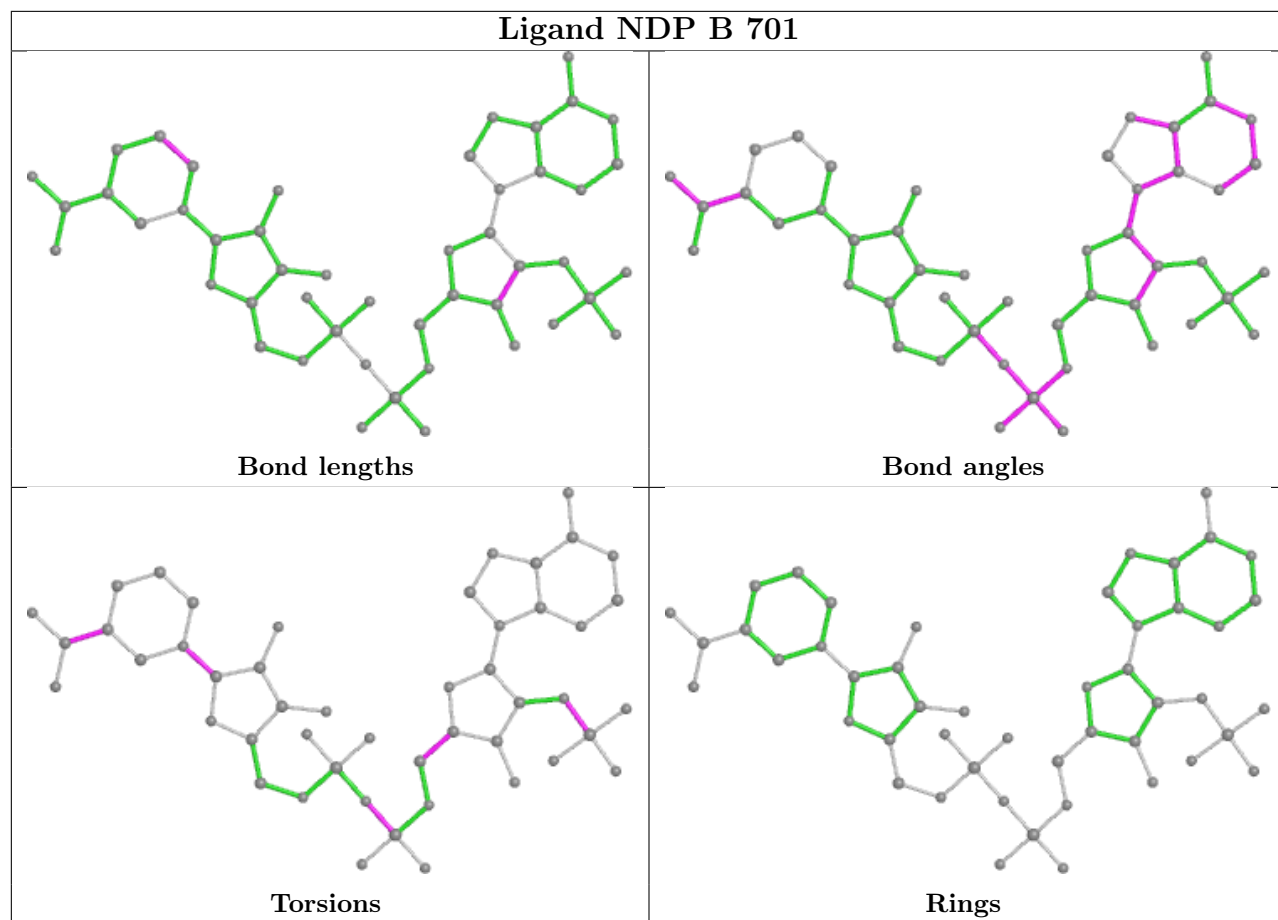
3 monomers are involved in 7 short contacts:

Mol	Chain	Res	Type	Clashes	Symm-Clashes
2	A	701	NDP	3	0
2	B	701	NDP	1	0
2	D	701	NDP	3	0

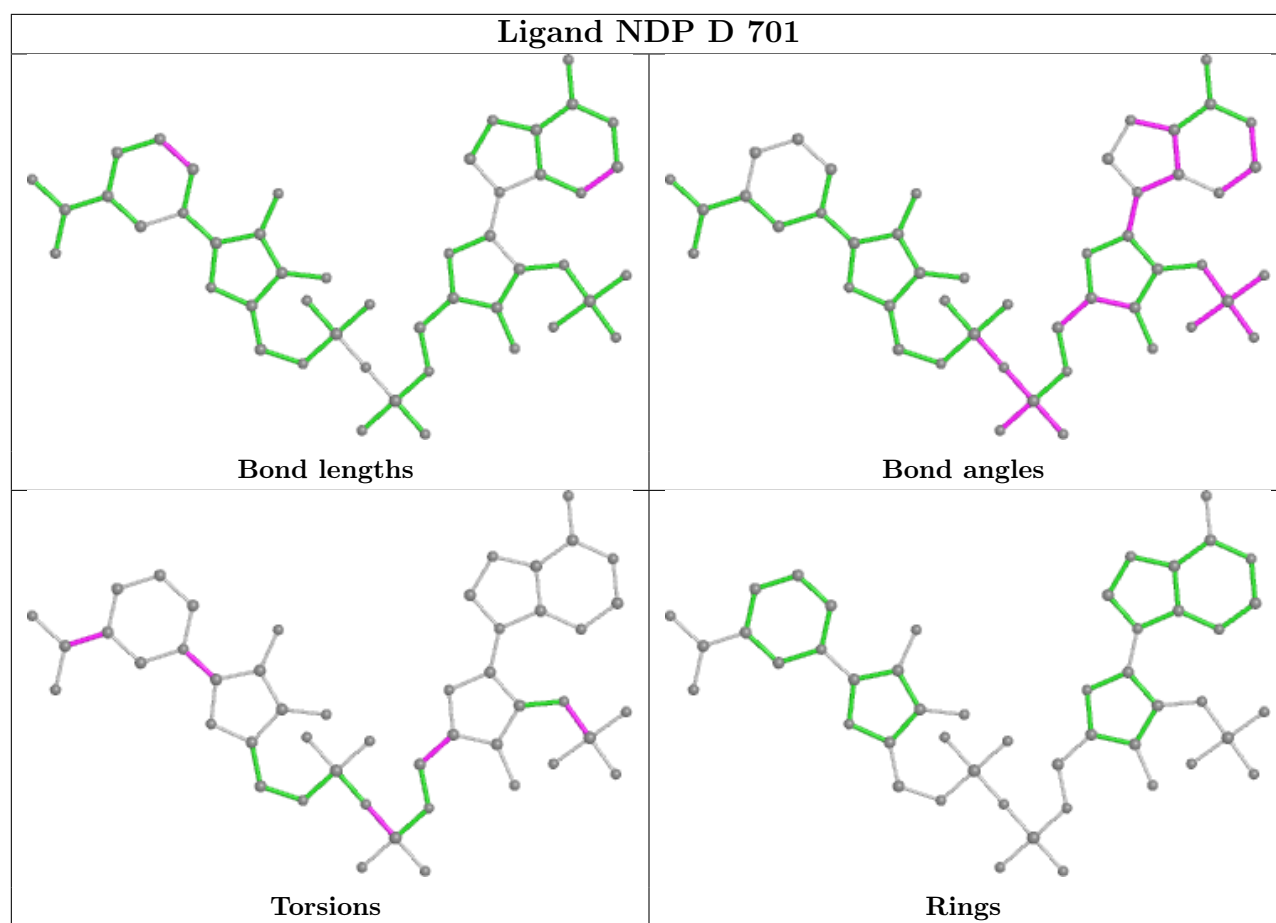
The following is a two-dimensional graphical depiction of Mogul quality analysis of bond lengths, bond angles, torsion angles, and ring geometry for all instances of the Ligand of Interest. In addition, ligands with molecular weight > 250 and outliers as shown on the validation Tables will also be included. For torsion angles, if less than 5% of the Mogul distribution of torsion angles is within 10 degrees of the torsion angle in question, then that torsion angle is considered an outlier. Any bond that is central to one or more torsion angles identified as an outlier by Mogul will be highlighted in the graph. For rings, the root-mean-square deviation (RMSD) between the ring in question and similar rings identified by Mogul is calculated over all ring torsion angles. If the average RMSD is greater than 60 degrees and the minimal RMSD between the ring in question and any Mogul-identified rings is also greater than 60 degrees, then that ring is considered an outlier. The outliers are highlighted in purple. The color gray indicates Mogul did not find sufficient equivalents in the CSD to analyse the geometry.











## 5.7 Other polymers [\(i\)](#)

There are no such residues in this entry.

## 5.8 Polymer linkage issues [\(i\)](#)

There are no chain breaks in this entry.

## 6 Fit of model and data [i](#)

### 6.1 Protein, DNA and RNA chains [i](#)

In the following table, the column labelled ‘#RSRZ> 2’ contains the number (and percentage) of RSRZ outliers, followed by percent RSRZ outliers for the chain as percentile scores relative to all X-ray entries and entries of similar resolution. The OWAB column contains the minimum, median, 95<sup>th</sup> percentile and maximum values of the occupancy-weighted average B-factor per residue. The column labelled ‘Q< 0.9’ lists the number of (and percentage) of residues with an average occupancy less than 0.9.

Mol	Chain	Analysed	<RSRZ>	#RSRZ>2	OWAB(Å <sup>2</sup> )	Q<0.9
1	A	375/401 (93%)	-0.23	4 (1%) 80 78	44, 76, 114, 136	0
1	B	390/401 (97%)	-0.39	1 (0%) 94 93	47, 68, 98, 124	0
1	C	367/401 (91%)	-0.18	9 (2%) 57 51	47, 79, 122, 141	0
1	D	387/401 (96%)	-0.40	1 (0%) 94 93	51, 70, 99, 123	0
All	All	1519/1604 (94%)	-0.30	15 (0%) 82 80	44, 72, 109, 141	0

All (15) RSRZ outliers are listed below:

Mol	Chain	Res	Type	RSRZ
1	C	71	GLU	4.9
1	C	74	SER	4.6
1	C	344	MET	3.0
1	C	351	ILE	2.9
1	A	88	LEU	2.8
1	C	221	ASP	2.8
1	C	363	VAL	2.6
1	A	65	LEU	2.6
1	C	220	VAL	2.5
1	B	135	PHE	2.3
1	C	353	PHE	2.3
1	A	62	ALA	2.1
1	A	246	ILE	2.1
1	C	348	ASP	2.1
1	D	276	MET	2.0

### 6.2 Non-standard residues in protein, DNA, RNA chains [i](#)

There are no non-standard protein/DNA/RNA residues in this entry.

### 6.3 Carbohydrates [i](#)

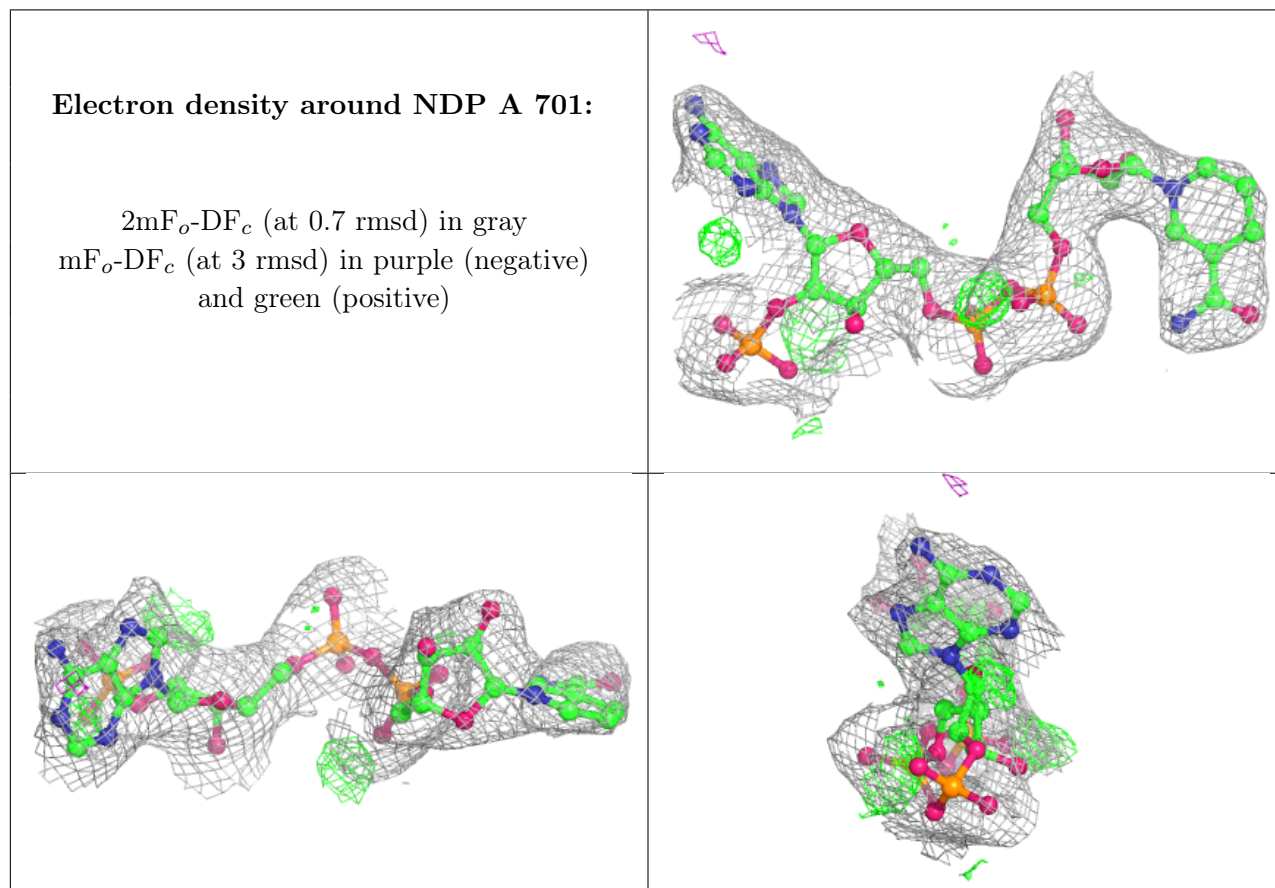
There are no monosaccharides in this entry.

### 6.4 Ligands [i](#)

In the following table, the Atoms column lists the number of modelled atoms in the group and the number defined in the chemical component dictionary. The B-factors column lists the minimum, median, 95<sup>th</sup> percentile and maximum values of B factors of atoms in the group. The column labelled 'Q< 0.9' lists the number of atoms with occupancy less than 0.9.

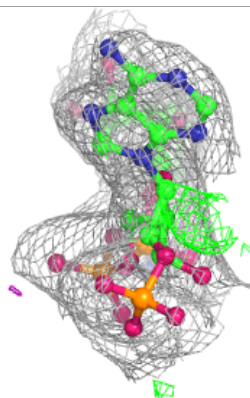
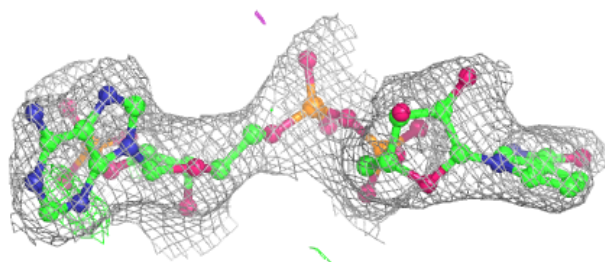
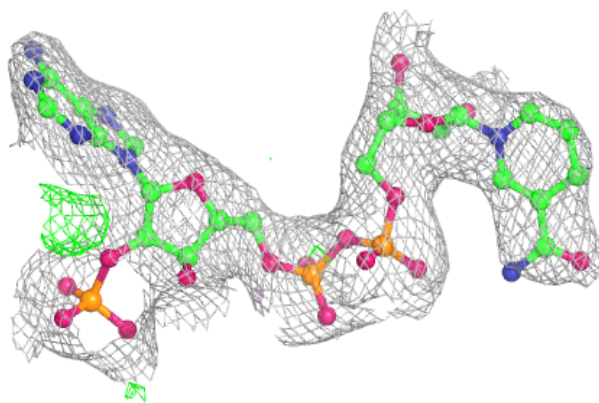
Mol	Type	Chain	Res	Atoms	RSCC	RSR	B-factors(Å <sup>2</sup> )	Q<0.9
2	NDP	A	701	48/48	0.95	0.10	65,76,83,86	0
2	NDP	C	701	48/48	0.95	0.10	69,77,83,86	0
2	NDP	D	701	48/48	0.96	0.12	55,65,76,82	0
2	NDP	B	701	48/48	0.97	0.12	48,61,77,83	0

The following is a graphical depiction of the model fit to experimental electron density of all instances of the Ligand of Interest. In addition, ligands with molecular weight > 250 and outliers as shown on the geometry validation Tables will also be included. Each fit is shown from different orientation to approximate a three-dimensional view.

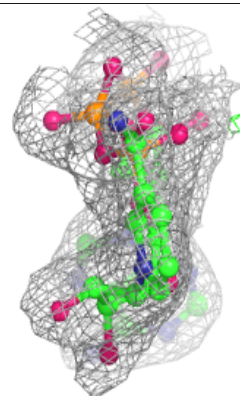
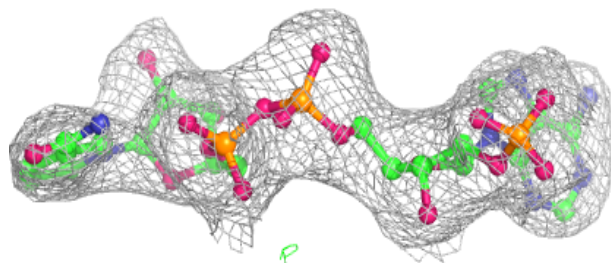
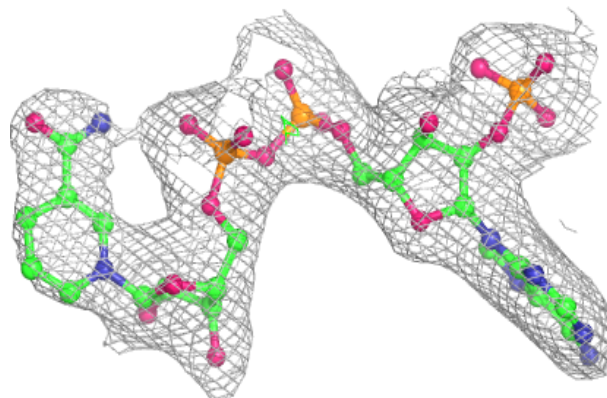


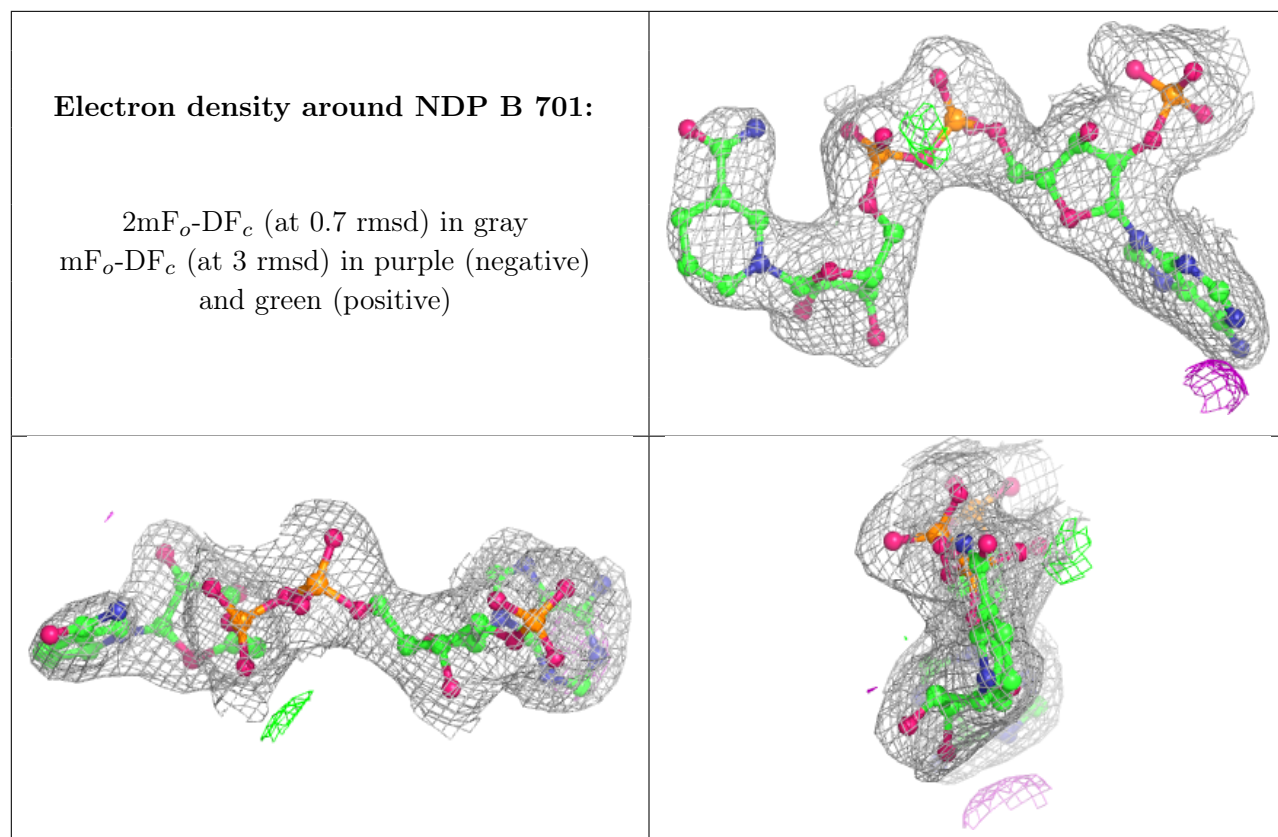
**Electron density around NDP C 701:**

$2mF_o-DF_c$  (at 0.7 rmsd) in gray  
 $mF_o-DF_c$  (at 3 rmsd) in purple (negative)  
and green (positive)

**Electron density around NDP D 701:**

$2mF_o-DF_c$  (at 0.7 rmsd) in gray  
 $mF_o-DF_c$  (at 3 rmsd) in purple (negative)  
and green (positive)





## 6.5 Other polymers [i](#)

There are no such residues in this entry.