



wwPDB X-ray Structure Validation Summary Report ⓘ

Nov 7, 2023 – 03:53 AM EST

PDB ID : 8DVM
Title : Crystal structure of LRP6 E3E4 in complex with disulfide constrained peptide E3.6
Authors : Thakur, A.K.; Liau, N.P.D.; Sudhamsu, J.; Hannoush, R.N.
Deposited on : 2022-07-29
Resolution : 2.00 Å (reported)

This is a wwPDB X-ray Structure Validation Summary Report for a publicly released PDB entry.

We welcome your comments at validation@mail.wwpdb.org

A user guide is available at

<https://www.wwpdb.org/validation/2017/XrayValidationReportHelp>

with specific help available everywhere you see the ⓘ symbol.

The types of validation reports are described at

<http://www.wwpdb.org/validation/2017/FAQs#types>.

The following versions of software and data (see [references ⓘ](#)) were used in the production of this report:

MolProbity : 4.02b-467
Mogul : 1.8.5 (274361), CSD as541be (2020)
Xtriage (Phenix) : 1.13
EDS : 2.36
Percentile statistics : 20191225.v01 (using entries in the PDB archive December 25th 2019)
Refmac : 5.8.0158
CCP4 : 7.0.044 (Gargrove)
Ideal geometry (proteins) : Engh & Huber (2001)
Ideal geometry (DNA, RNA) : Parkinson et al. (1996)
Validation Pipeline (wwPDB-VP) : 2.36

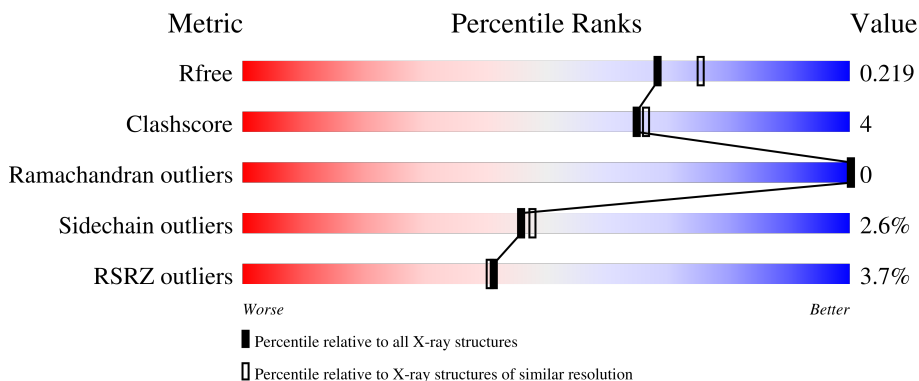
1 Overall quality at a glance i

The following experimental techniques were used to determine the structure:

X-RAY DIFFRACTION

The reported resolution of this entry is 2.00 Å.

Percentile scores (ranging between 0-100) for global validation metrics of the entry are shown in the following graphic. The table shows the number of entries on which the scores are based.



Metric	Whole archive (#Entries)	Similar resolution (#Entries, resolution range(Å))
R_{free}	130704	8085 (2.00-2.00)
Clashscore	141614	9178 (2.00-2.00)
Ramachandran outliers	138981	9054 (2.00-2.00)
Sidechain outliers	138945	9053 (2.00-2.00)
RSRZ outliers	127900	7900 (2.00-2.00)

The table below summarises the geometric issues observed across the polymeric chains and their fit to the electron density. The red, orange, yellow and green segments of the lower bar indicate the fraction of residues that contain outliers for ≥ 3 , 2, 1 and 0 types of geometric quality criteria respectively. A grey segment represents the fraction of residues that are not modelled. The numeric value for each fraction is indicated below the corresponding segment, with a dot representing fractions $\leq 5\%$. The upper red bar (where present) indicates the fraction of residues that have poor fit to the electron density. The numeric value is given above the bar.

Mol	Chain	Length	Quality of chain
1	A	633	<div style="display: flex; align-items: center;"> <div style="width: 2%; height: 10px; background-color: red; margin-right: 5px;"></div> <div style="width: 84%; height: 10px; background-color: green; margin-right: 5px;"></div> <div style="width: 12%; height: 10px; background-color: yellow; margin-right: 5px;"></div> <div style="width: 2%; height: 10px; background-color: grey;"></div> </div> <p style="margin-left: 20px;">2% 84% 12% .</p>
2	B	30	<div style="display: flex; align-items: center;"> <div style="width: 27%; height: 10px; background-color: red; margin-right: 5px;"></div> <div style="width: 43%; height: 10px; background-color: green; margin-right: 5px;"></div> <div style="width: 7%; height: 10px; background-color: yellow; margin-right: 5px;"></div> <div style="width: 50%; height: 10px; background-color: grey;"></div> </div> <p style="margin-left: 20px;">27% 43% 7% 50%</p>
3	F	7	<div style="display: flex; align-items: center;"> <div style="width: 71%; height: 10px; background-color: green; margin-right: 5px;"></div> <div style="width: 29%; height: 10px; background-color: yellow; margin-right: 5px;"></div> </div> <p style="margin-left: 20px;">71% 29%</p>
4	C	2	<div style="width: 100%; height: 10px; background-color: green;"></div> <p style="margin-left: 20px;">100%</p>
4	D	2	<div style="width: 100%; height: 10px; background-color: green;"></div> <p style="margin-left: 20px;">100%</p>

Continued on next page...

Continued from previous page...

Mol	Chain	Length	Quality of chain
5	E	3	

The following table lists non-polymeric compounds, carbohydrate monomers and non-standard residues in protein, DNA, RNA chains that are outliers for geometric or electron-density-fit criteria:

Mol	Type	Chain	Res	Chirality	Geometry	Clashes	Electron density
4	NAG	C	2	-	-	-	X
5	BMA	E	3	-	-	-	X

2 Entry composition i

There are 10 unique types of molecules in this entry. The entry contains 5542 atoms, of which 0 are hydrogens and 0 are deuteriums.

In the tables below, the ZeroOcc column contains the number of atoms modelled with zero occupancy, the AltConf column contains the number of residues with at least one atom in alternate conformation and the Trace column contains the number of residues modelled with at most 2 atoms.

- Molecule 1 is a protein called Low-density lipoprotein receptor-related protein 6.

Mol	Chain	Residues	Atoms					ZeroOcc	AltConf	Trace
			Total	C	N	O	S			
1	A	612	4920	3088	870	937	25	0	5	0

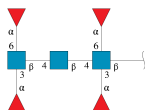
There are 11 discrepancies between the modelled and reference sequences:

Chain	Residue	Modelled	Actual	Comment	Reference
A	630	SER	-	expression tag	UNP O75581
A	1062	ILE	VAL	variant	UNP O75581
A	1254	GLY	-	expression tag	UNP O75581
A	1255	ASN	-	expression tag	UNP O75581
A	1256	SER	-	expression tag	UNP O75581
A	1257	HIS	-	expression tag	UNP O75581
A	1258	HIS	-	expression tag	UNP O75581
A	1259	HIS	-	expression tag	UNP O75581
A	1260	HIS	-	expression tag	UNP O75581
A	1261	HIS	-	expression tag	UNP O75581
A	1262	HIS	-	expression tag	UNP O75581

- Molecule 2 is a protein called E3.6 Disulfide constrained peptide.

Mol	Chain	Residues	Atoms					ZeroOcc	AltConf	Trace
			Total	C	N	O	S			
2	B	15	136	94	24	15	3	0	0	0

- Molecule 3 is an oligosaccharide called alpha-L-fucopyranose-(1-3)-[alpha-L-fucopyranose-(1-6)]2-acetamido-2-deoxy-beta-D-glucopyranose-(1-4)-2-acetamido-2-deoxy-beta-D-glucopyranose-(1-4)-[alpha-L-fucopyranose-(1-3)][alpha-L-fucopyranose-(1-6)]2-acetamido-2-deoxy-beta-D-glucopyranose.



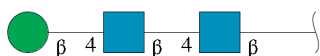
Mol	Chain	Residues	Atoms				ZeroOcc	AltConf	Trace
			Total	C	N	O			
3	F	7	82	48	3	31	0	0	0

- Molecule 4 is an oligosaccharide called 2-acetamido-2-deoxy-beta-D-glucopyranose-(1-4)-2-acetamido-2-deoxy-beta-D-glucopyranose.



Mol	Chain	Residues	Atoms				ZeroOcc	AltConf	Trace
			Total	C	N	O			
4	C	2	28	16	2	10	0	0	0
4	D	2	28	16	2	10	0	0	0

- Molecule 5 is an oligosaccharide called beta-D-mannopyranose-(1-4)-2-acetamido-2-deoxy-beta-D-glucopyranose-(1-4)-2-acetamido-2-deoxy-beta-D-glucopyranose.



Mol	Chain	Residues	Atoms				ZeroOcc	AltConf	Trace
			Total	C	N	O			
5	E	3	39	22	2	15	0	0	0

- Molecule 6 is 2-acetamido-2-deoxy-beta-D-glucopyranose (three-letter code: NAG) (formula: C₈H₁₅NO₆).

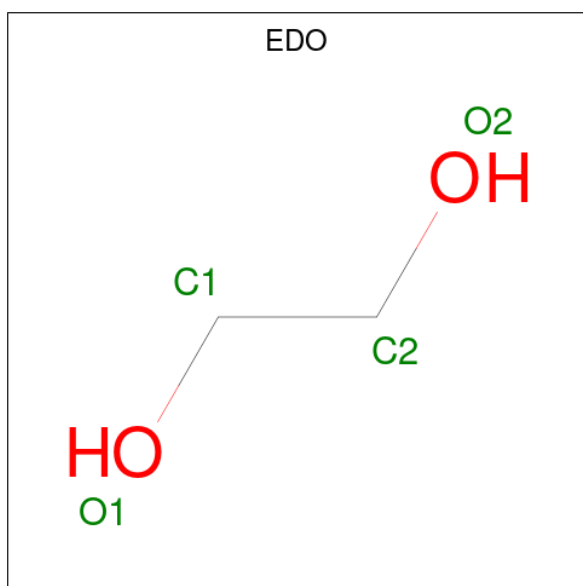


Mol	Chain	Residues	Atoms				ZeroOcc	AltConf
			Total	C	N	O		
6	A	1	14	8	1	5	0	0

- Molecule 7 is CALCIUM ION (three-letter code: CA) (formula: Ca).

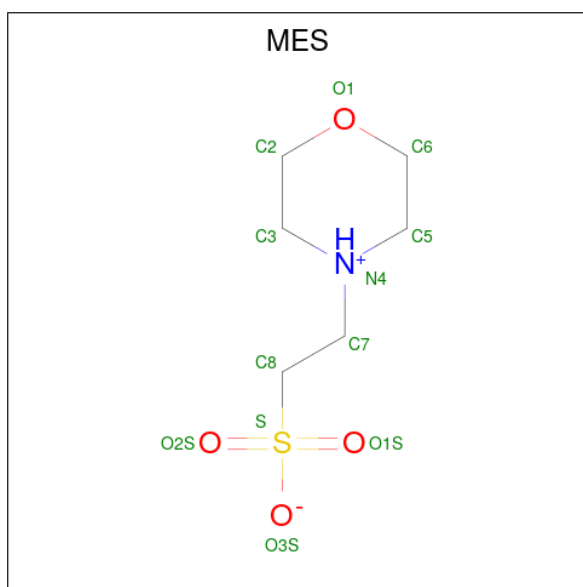
Mol	Chain	Residues	Atoms		ZeroOcc	AltConf
			Total	Ca		
7	A	3	3	3	0	0

- Molecule 8 is 1,2-ETHANEDIOL (three-letter code: EDO) (formula: C₂H₆O₂).



Mol	Chain	Residues	Atoms	ZeroOcc	AltConf
8	A	1	Total C O 4 2 2	0	0
8	A	1	Total C O 4 2 2	0	0
8	A	1	Total C O 4 2 2	0	0
8	A	1	Total C O 4 2 2	0	0
8	A	1	Total C O 4 2 2	0	0
8	A	1	Total C O 4 2 2	0	0
8	A	1	Total C O 4 2 2	0	0
8	A	1	Total C O 4 2 2	0	0
8	A	1	Total C O 4 2 2	0	0
8	A	1	Total C O 4 2 2	0	0
8	A	1	Total C O 4 2 2	0	0
8	A	1	Total C O 4 2 2	0	0
8	A	1	Total C O 4 2 2	0	0
8	A	1	Total C O 4 2 2	0	0
8	A	1	Total C O 4 2 2	0	0

- Molecule 9 is 2-(N-MORPHOLINO)-ETHANESULFONIC ACID (three-letter code: MES) (formula: C₆H₁₃NO₄S).



Mol	Chain	Residues	Atoms					ZeroOcc	AltConf
			Total	C	N	O	S		
9	A	1	12	6	1	4	1	0	0

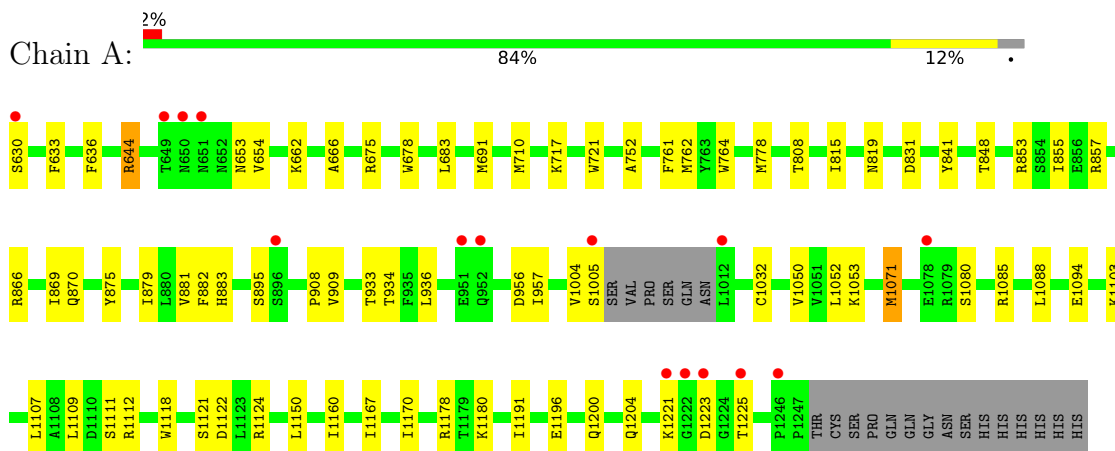
- Molecule 10 is water.

Mol	Chain	Residues	Atoms		ZeroOcc	AltConf
			Total	O		
10	A	223	223	223	0	0
10	B	1	1	1	0	0

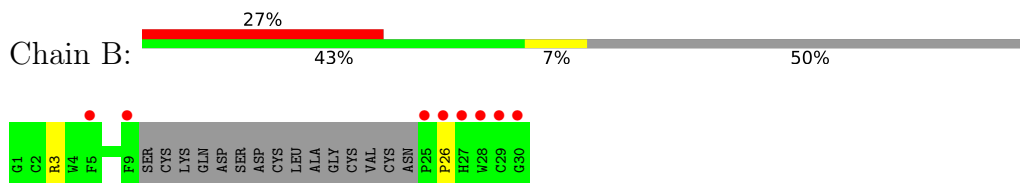
3 Residue-property plots [i](#)

These plots are drawn for all protein, RNA, DNA and oligosaccharide chains in the entry. The first graphic for a chain summarises the proportions of the various outlier classes displayed in the second graphic. The second graphic shows the sequence view annotated by issues in geometry and electron density. Residues are color-coded according to the number of geometric quality criteria for which they contain at least one outlier: green = 0, yellow = 1, orange = 2 and red = 3 or more. A red dot above a residue indicates a poor fit to the electron density ($RSRZ > 2$). Stretches of 2 or more consecutive residues without any outlier are shown as a green connector. Residues present in the sample, but not in the model, are shown in grey.

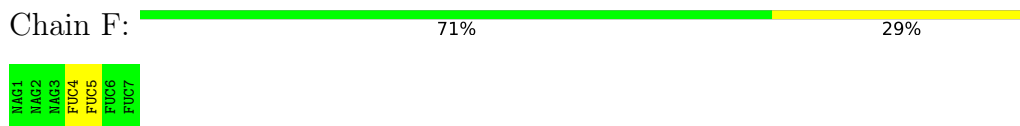
- Molecule 1: Low-density lipoprotein receptor-related protein 6



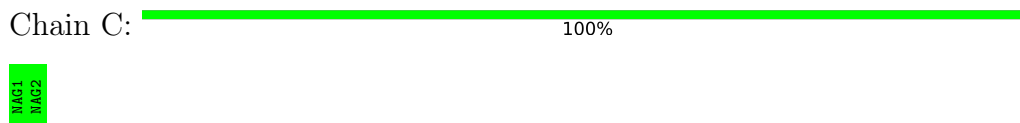
- Molecule 2: E3.6 Disulfide constrained peptide



- Molecule 3: alpha-L-fucopyranose-(1-3)-[alpha-L-fucopyranose-(1-6)]2-acetamido-2-deoxy-beta-D-glucopyranose-(1-4)-2-acetamido-2-deoxy-beta-D-glucopyranose-(1-4)-[alpha-L-fucopyranose-(1-3)][alpha-L-fucopyranose-(1-6)]2-acetamido-2-deoxy-beta-D-glucopyranose



- Molecule 4: 2-acetamido-2-deoxy-beta-D-glucopyranose-(1-4)-2-acetamido-2-deoxy-beta-D-glucopyranose



- Molecule 4: 2-acetamido-2-deoxy-beta-D-glucopyranose-(1-4)-2-acetamido-2-deoxy-beta-D-glucopyranose

Chain D:  100%

MAG1
MAG2

- Molecule 5: beta-D-mannopyranose-(1-4)-2-acetamido-2-deoxy-beta-D-glucopyranose-(1-4)-2-acetamido-2-deoxy-beta-D-glucopyranose

Chain E:  33% 33% 33%

MAG1
MAG2
BMA3

4 Data and refinement statistics

Property	Value	Source
Space group	P 21 21 21	Depositor
Cell constants a, b, c, α , β , γ	66.46Å 102.98Å 108.78Å 90.00° 90.00° 90.00°	Depositor
Resolution (Å)	46.54 – 2.00 48.09 – 2.00	Depositor EDS
% Data completeness (in resolution range)	98.2 (46.54-2.00) 87.4 (48.09-2.00)	Depositor EDS
R_{merge}	(Not available)	Depositor
R_{sym}	(Not available)	Depositor
$\langle I/\sigma(I) \rangle$ ¹	0.73 (at 2.00Å)	Xtrriage
Refinement program	PHENIX 1.20rc3-4406_final	Depositor
R, R_{free}	0.186 , 0.221 0.186 , 0.219	Depositor DCC
R_{free} test set	3110 reflections (6.16%)	wwPDB-VP
Wilson B-factor (Å ²)	32.3	Xtrriage
Anisotropy	0.272	Xtrriage
Bulk solvent k_{sol} (e/Å ³), B_{sol} (Å ²)	0.34 , 49.0	EDS
L-test for twinning ²	$\langle L \rangle = 0.48$, $\langle L^2 \rangle = 0.31$	Xtrriage
Estimated twinning fraction	No twinning to report.	Xtrriage
F_o, F_c correlation	0.96	EDS
Total number of atoms	5542	wwPDB-VP
Average B, all atoms (Å ²)	49.0	wwPDB-VP

Xtrriage's analysis on translational NCS is as follows: *The largest off-origin peak in the Patterson function is 3.68% of the height of the origin peak. No significant pseudotranslation is detected.*

¹Intensities estimated from amplitudes.

²Theoretical values of $\langle |L| \rangle$, $\langle L^2 \rangle$ for acentric reflections are 0.5, 0.333 respectively for untwinned datasets, and 0.375, 0.2 for perfectly twinned datasets.

5 Model quality [i](#)

5.1 Standard geometry [i](#)

Bond lengths and bond angles in the following residue types are not validated in this section: CA, NAG, OCS, FUC, EDO, MES, BMA

The Z score for a bond length (or angle) is the number of standard deviations the observed value is removed from the expected value. A bond length (or angle) with $|Z| > 5$ is considered an outlier worth inspection. RMSZ is the root-mean-square of all Z scores of the bond lengths (or angles).

Mol	Chain	Bond lengths		Bond angles	
		RMSZ	# Z >5	RMSZ	# Z >5
1	A	0.44	0/5025	0.70	1/6819 (0.0%)
2	B	0.55	0/145	0.73	0/194
All	All	0.44	0/5170	0.70	1/7013 (0.0%)

There are no bond length outliers.

All (1) bond angle outliers are listed below:

Mol	Chain	Res	Type	Atoms	Z	Observed(°)	Ideal(°)
1	A	1109	LEU	CA-CB-CG	5.45	127.84	115.30

There are no chirality outliers.

There are no planarity outliers.

5.2 Too-close contacts [i](#)

In the following table, the Non-H and H(model) columns list the number of non-hydrogen atoms and hydrogen atoms in the chain respectively. The H(added) column lists the number of hydrogen atoms added and optimized by MolProbity. The Clashes column lists the number of clashes within the asymmetric unit, whereas Symm-Clashes lists symmetry-related clashes.

Mol	Chain	Non-H	H(model)	H(added)	Clashes	Symm-Clashes
1	A	4920	0	4787	42	0
2	B	136	0	120	1	0
3	F	82	0	73	0	0
4	C	28	0	25	0	0
4	D	28	0	25	0	0
5	E	39	0	34	3	0
6	A	14	0	13	0	0
7	A	3	0	0	0	0

Continued on next page...

Continued from previous page...

Mol	Chain	Non-H	H(model)	H(added)	Clashes	Symm-Clashes
8	A	56	0	84	3	0
9	A	12	0	12	0	0
10	A	223	0	0	2	0
10	B	1	0	0	0	0
All	All	5542	0	5173	43	0

The all-atom clashscore is defined as the number of clashes found per 1000 atoms (including hydrogen atoms). The all-atom clashscore for this structure is 4.

The worst 5 of 43 close contacts within the same asymmetric unit are listed below, sorted by their clash magnitude.

Atom-1	Atom-2	Interatomic distance (Å)	Clash overlap (Å)
1:A:662:LYS:HD3	1:A:683:LEU:HD21	1.70	0.71
1:A:1050:VAL:HG11	5:E:1:NAG:H82	1.76	0.68
1:A:1122:ASP:O	1:A:1124:ARG:NH1	2.28	0.67
1:A:1196:GLU:HA	8:A:1313:EDO:H21	1.78	0.65
1:A:1103:LYS:HD2	1:A:1121:SER:OG	2.00	0.61

There are no symmetry-related clashes.

5.3 Torsion angles [i](#)

5.3.1 Protein backbone [i](#)

In the following table, the Percentiles column shows the percent Ramachandran outliers of the chain as a percentile score with respect to all X-ray entries followed by that with respect to entries of similar resolution.

The Analysed column shows the number of residues for which the backbone conformation was analysed, and the total number of residues.

Mol	Chain	Analysed	Favoured	Allowed	Outliers	Percentiles	
1	A	612/633 (97%)	584 (95%)	28 (5%)	0	100	100
2	B	11/30 (37%)	11 (100%)	0	0	100	100
All	All	623/663 (94%)	595 (96%)	28 (4%)	0	100	100

There are no Ramachandran outliers to report.

5.3.2 Protein sidechains [i](#)

In the following table, the Percentiles column shows the percent sidechain outliers of the chain as a percentile score with respect to all X-ray entries followed by that with respect to entries of similar resolution.

The Analysed column shows the number of residues for which the sidechain conformation was analysed, and the total number of residues.

Mol	Chain	Analysed	Rotameric	Outliers	Percentiles	
1	A	538/553 (97%)	525 (98%)	13 (2%)	49	51
2	B	13/26 (50%)	12 (92%)	1 (8%)	13	8
All	All	551/579 (95%)	537 (98%)	14 (2%)	46	49

5 of 14 residues with a non-rotameric sidechain are listed below:

Mol	Chain	Res	Type
1	A	1053	LYS
1	A	1071	MET
2	B	3	ARG
1	A	1150	LEU
1	A	1223	ASP

Sometimes sidechains can be flipped to improve hydrogen bonding and reduce clashes. All (1) such sidechains are listed below:

Mol	Chain	Res	Type
1	A	1182	GLN

5.3.3 RNA [i](#)

There are no RNA molecules in this entry.

5.4 Non-standard residues in protein, DNA, RNA chains [i](#)

1 non-standard protein/DNA/RNA residue is modelled in this entry.

In the following table, the Counts columns list the number of bonds (or angles) for which Mogul statistics could be retrieved, the number of bonds (or angles) that are observed in the model and the number of bonds (or angles) that are defined in the Chemical Component Dictionary. The Link column lists molecule types, if any, to which the group is linked. The Z score for a bond length (or angle) is the number of standard deviations the observed value is removed from the expected value. A bond length (or angle) with $|Z| > 2$ is considered an outlier worth inspection. RMSZ is the root-mean-square of all Z scores of the bond lengths (or angles).

Mol	Type	Chain	Res	Link	Bond lengths			Bond angles		
					Counts	RMSZ	# Z > 2	Counts	RMSZ	# Z > 2
1	OCS	A	1032	1	7,8,9	1.01	0	6,11,13	1.26	1 (16%)

In the following table, the Chirals column lists the number of chiral outliers, the number of chiral centers analysed, the number of these observed in the model and the number defined in the Chemical Component Dictionary. Similar counts are reported in the Torsion and Rings columns. '-' means no outliers of that kind were identified.

Mol	Type	Chain	Res	Link	Chirals	Torsions	Rings
1	OCS	A	1032	1	-	1/4/7/9	-

There are no bond length outliers.

All (1) bond angle outliers are listed below:

Mol	Chain	Res	Type	Atoms	Z	Observed(°)	Ideal(°)
1	A	1032	OCS	OD3-SG-CB	2.10	109.44	106.94

There are no chirality outliers.

All (1) torsion outliers are listed below:

Mol	Chain	Res	Type	Atoms
1	A	1032	OCS	N-CA-CB-SG

There are no ring outliers.

No monomer is involved in short contacts.

5.5 Carbohydrates [i](#)

14 monosaccharides are modelled in this entry.

In the following table, the Counts columns list the number of bonds (or angles) for which Mogul statistics could be retrieved, the number of bonds (or angles) that are observed in the model and the number of bonds (or angles) that are defined in the Chemical Component Dictionary. The Link column lists molecule types, if any, to which the group is linked. The Z score for a bond length (or angle) is the number of standard deviations the observed value is removed from the expected value. A bond length (or angle) with $|Z| > 2$ is considered an outlier worth inspection. RMSZ is the root-mean-square of all Z scores of the bond lengths (or angles).

Mol	Type	Chain	Res	Link	Bond lengths			Bond angles		
					Counts	RMSZ	# Z > 2	Counts	RMSZ	# Z > 2
4	NAG	C	1	1,4	14,14,15	0.33	0	17,19,21	0.43	0

Mol	Type	Chain	Res	Link	Bond lengths			Bond angles		
					Counts	RMSZ	# Z > 2	Counts	RMSZ	# Z > 2
4	NAG	C	2	4	14,14,15	0.49	0	17,19,21	0.43	0
4	NAG	D	1	1,4	14,14,15	0.44	0	17,19,21	0.54	0
4	NAG	D	2	4	14,14,15	0.41	0	17,19,21	0.52	0
5	NAG	E	1	1,5	14,14,15	0.28	0	17,19,21	1.01	1 (5%)
5	NAG	E	2	5	14,14,15	0.28	0	17,19,21	0.54	0
5	BMA	E	3	5	11,11,12	1.31	1 (9%)	15,15,17	0.81	0
3	NAG	F	1	1,3	14,14,15	0.53	0	17,19,21	0.53	0
3	NAG	F	2	3	14,14,15	0.18	0	17,19,21	0.69	0
3	NAG	F	3	3	14,14,15	0.50	0	17,19,21	0.51	0
3	FUC	F	4	3	10,10,11	1.25	2 (20%)	14,14,16	1.51	2 (14%)
3	FUC	F	5	3	10,10,11	1.14	2 (20%)	14,14,16	0.86	0
3	FUC	F	6	3	10,10,11	0.86	0	14,14,16	0.84	0
3	FUC	F	7	3	10,10,11	0.90	0	14,14,16	0.69	0

In the following table, the Chirals column lists the number of chiral outliers, the number of chiral centers analysed, the number of these observed in the model and the number defined in the Chemical Component Dictionary. Similar counts are reported in the Torsion and Rings columns. '-' means no outliers of that kind were identified.

Mol	Type	Chain	Res	Link	Chirals	Torsions	Rings
4	NAG	C	1	1,4	-	0/6/23/26	0/1/1/1
4	NAG	C	2	4	-	2/6/23/26	0/1/1/1
4	NAG	D	1	1,4	-	0/6/23/26	0/1/1/1
4	NAG	D	2	4	-	2/6/23/26	0/1/1/1
5	NAG	E	1	1,5	-	0/6/23/26	0/1/1/1
5	NAG	E	2	5	-	2/6/23/26	0/1/1/1
5	BMA	E	3	5	-	1/2/19/22	0/1/1/1
3	NAG	F	1	1,3	-	0/6/23/26	0/1/1/1
3	NAG	F	2	3	-	0/6/23/26	0/1/1/1
3	NAG	F	3	3	-	2/6/23/26	0/1/1/1
3	FUC	F	4	3	-	-	0/1/1/1
3	FUC	F	5	3	-	-	0/1/1/1
3	FUC	F	6	3	-	-	0/1/1/1
3	FUC	F	7	3	-	-	0/1/1/1

All (5) bond length outliers are listed below:

Mol	Chain	Res	Type	Atoms	Z	Observed(Å)	Ideal(Å)
5	E	3	BMA	C4-C5	2.84	1.59	1.53
3	F	4	FUC	C4-C5	2.40	1.58	1.52

Continued on next page...

Continued from previous page...

Mol	Chain	Res	Type	Atoms	Z	Observed(Å)	Ideal(Å)
3	F	5	FUC	C1-C2	2.25	1.57	1.52
3	F	5	FUC	C2-C3	2.25	1.55	1.52
3	F	4	FUC	C4-C3	2.05	1.57	1.52

All (3) bond angle outliers are listed below:

Mol	Chain	Res	Type	Atoms	Z	Observed(°)	Ideal(°)
3	F	4	FUC	C3-C4-C5	3.44	115.14	109.77
3	F	4	FUC	O5-C5-C4	3.30	115.44	109.52
5	E	1	NAG	C1-O5-C5	2.78	115.95	112.19

There are no chirality outliers.

5 of 9 torsion outliers are listed below:

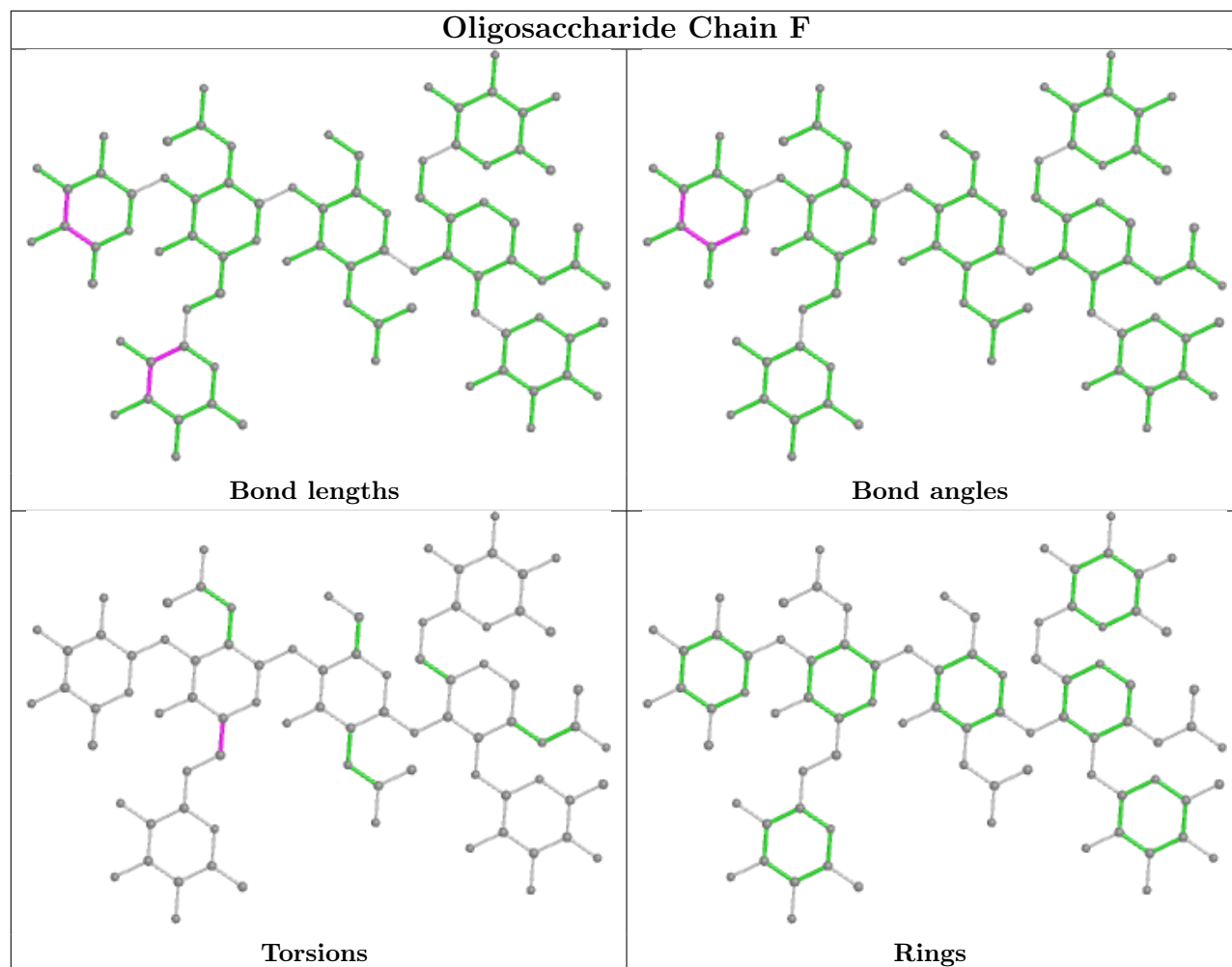
Mol	Chain	Res	Type	Atoms
4	D	2	NAG	O5-C5-C6-O6
4	D	2	NAG	C4-C5-C6-O6
3	F	3	NAG	O5-C5-C6-O6
5	E	3	BMA	O5-C5-C6-O6
3	F	3	NAG	C4-C5-C6-O6

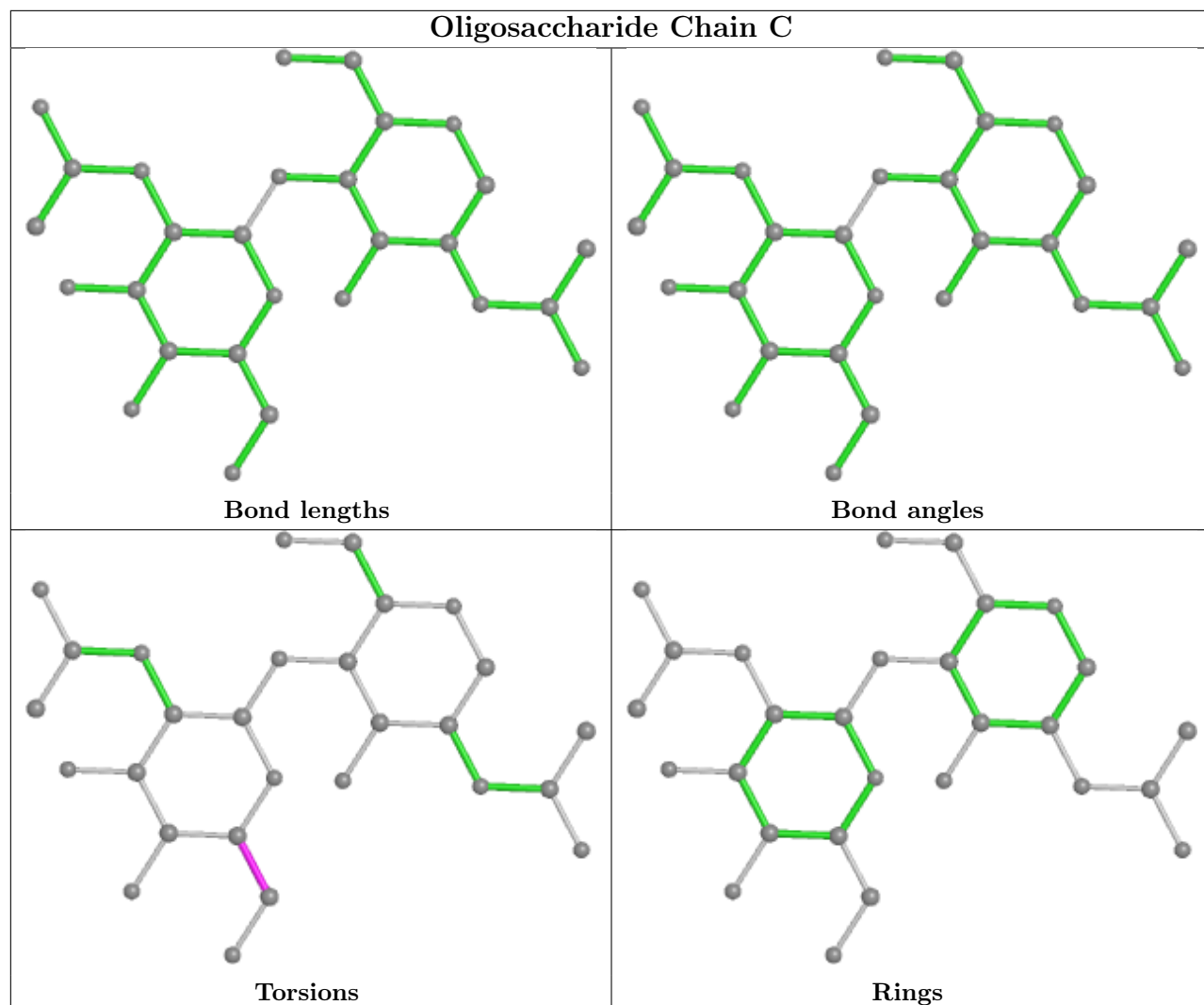
There are no ring outliers.

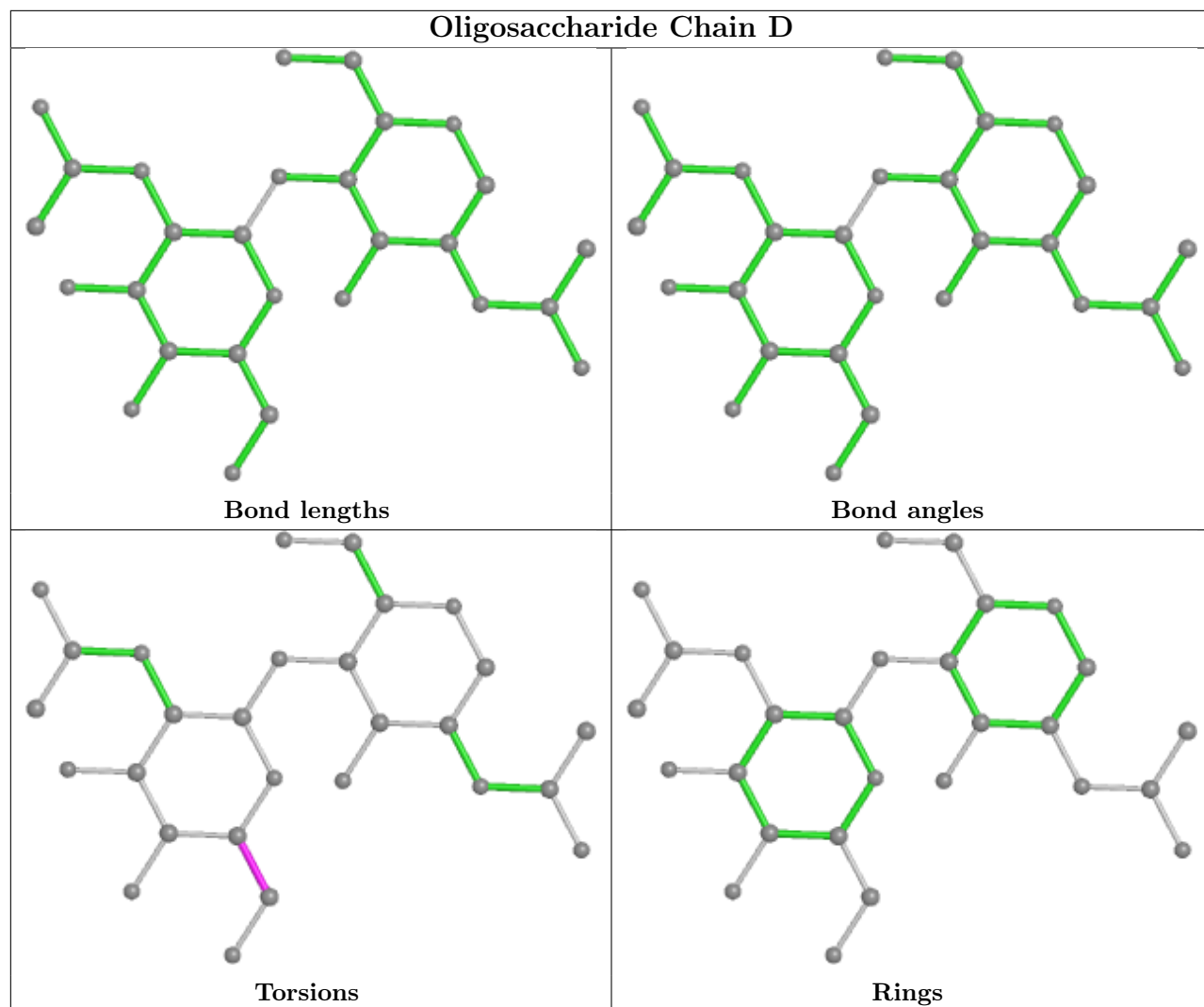
1 monomer is involved in 3 short contacts:

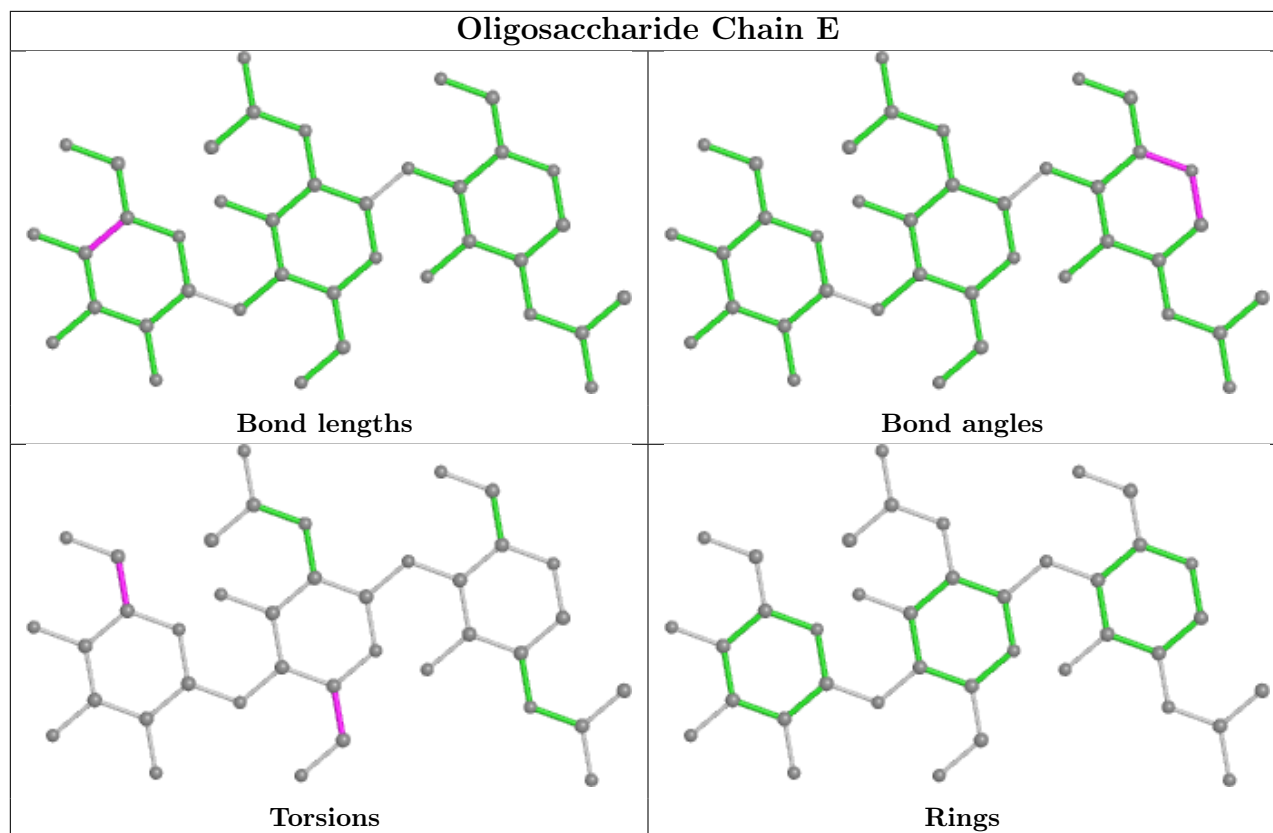
Mol	Chain	Res	Type	Clashes	Symm-Clashes
5	E	1	NAG	3	0

The following is a two-dimensional graphical depiction of Mogul quality analysis of bond lengths, bond angles, torsion angles, and ring geometry for oligosaccharide.









5.6 Ligand geometry [i](#)

Of 19 ligands modelled in this entry, 3 are monoatomic - leaving 16 for Mogul analysis.

In the following table, the Counts columns list the number of bonds (or angles) for which Mogul statistics could be retrieved, the number of bonds (or angles) that are observed in the model and the number of bonds (or angles) that are defined in the Chemical Component Dictionary. The Link column lists molecule types, if any, to which the group is linked. The Z score for a bond length (or angle) is the number of standard deviations the observed value is removed from the expected value. A bond length (or angle) with $|Z| > 2$ is considered an outlier worth inspection. RMSZ is the root-mean-square of all Z scores of the bond lengths (or angles).

Mol	Type	Chain	Res	Link	Bond lengths			Bond angles		
					Counts	RMSZ	# $ Z > 2$	Counts	RMSZ	# $ Z > 2$
8	EDO	A	1307	-	3,3,3	0.47	0	2,2,2	0.70	0
6	NAG	A	1301	1	14,14,15	0.54	0	17,19,21	0.44	0
8	EDO	A	1312	-	3,3,3	0.48	0	2,2,2	0.32	0
8	EDO	A	1314	-	3,3,3	0.49	0	2,2,2	0.35	0
9	MES	A	1319	-	12,12,12	1.87	1 (8%)	14,16,16	2.26	6 (42%)
8	EDO	A	1308	-	3,3,3	0.55	0	2,2,2	0.31	0
8	EDO	A	1309	-	3,3,3	0.64	0	2,2,2	0.24	0
8	EDO	A	1311	-	3,3,3	0.95	0	2,2,2	0.45	0
8	EDO	A	1318	-	3,3,3	0.59	0	2,2,2	0.45	0

Mol	Type	Chain	Res	Link	Bond lengths			Bond angles		
					Counts	RMSZ	# Z > 2	Counts	RMSZ	# Z > 2
8	EDO	A	1315	-	3,3,3	0.49	0	2,2,2	0.34	0
8	EDO	A	1310	-	3,3,3	0.61	0	2,2,2	0.01	0
8	EDO	A	1313	-	3,3,3	0.56	0	2,2,2	0.17	0
8	EDO	A	1306	-	3,3,3	0.51	0	2,2,2	0.25	0
8	EDO	A	1305	-	3,3,3	0.49	0	2,2,2	0.25	0
8	EDO	A	1317	-	3,3,3	0.58	0	2,2,2	0.12	0
8	EDO	A	1316	-	3,3,3	0.49	0	2,2,2	0.56	0

In the following table, the Chirals column lists the number of chiral outliers, the number of chiral centers analysed, the number of these observed in the model and the number defined in the Chemical Component Dictionary. Similar counts are reported in the Torsion and Rings columns. '-' means no outliers of that kind were identified.

Mol	Type	Chain	Res	Link	Chirals	Torsions	Rings
8	EDO	A	1307	-	-	0/1/1/1	-
6	NAG	A	1301	1	-	0/6/23/26	0/1/1/1
8	EDO	A	1312	-	-	0/1/1/1	-
8	EDO	A	1314	-	-	0/1/1/1	-
9	MES	A	1319	-	-	1/6/14/14	0/1/1/1
8	EDO	A	1308	-	-	1/1/1/1	-
8	EDO	A	1309	-	-	1/1/1/1	-
8	EDO	A	1311	-	-	0/1/1/1	-
8	EDO	A	1318	-	-	1/1/1/1	-
8	EDO	A	1315	-	-	1/1/1/1	-
8	EDO	A	1310	-	-	0/1/1/1	-
8	EDO	A	1313	-	-	0/1/1/1	-
8	EDO	A	1306	-	-	1/1/1/1	-
8	EDO	A	1305	-	-	0/1/1/1	-
8	EDO	A	1317	-	-	0/1/1/1	-
8	EDO	A	1316	-	-	0/1/1/1	-

All (1) bond length outliers are listed below:

Mol	Chain	Res	Type	Atoms	Z	Observed(Å)	Ideal(Å)
9	A	1319	MES	C8-S	-6.12	1.68	1.77

The worst 5 of 6 bond angle outliers are listed below:

Mol	Chain	Res	Type	Atoms	Z	Observed(°)	Ideal(°)
9	A	1319	MES	C5-N4-C3	4.13	118.12	108.83
9	A	1319	MES	O3S-S-C8	3.43	111.32	105.77
9	A	1319	MES	C7-N4-C5	3.17	119.33	111.23

Continued on next page...

Continued from previous page...

Mol	Chain	Res	Type	Atoms	Z	Observed(°)	Ideal(°)
9	A	1319	MES	C2-C3-N4	2.97	114.61	110.10
9	A	1319	MES	O1-C2-C3	2.60	117.53	111.80

There are no chirality outliers.

5 of 6 torsion outliers are listed below:

Mol	Chain	Res	Type	Atoms
9	A	1319	MES	C8-C7-N4-C5
8	A	1308	EDO	O1-C1-C2-O2
8	A	1309	EDO	O1-C1-C2-O2
8	A	1315	EDO	O1-C1-C2-O2
8	A	1306	EDO	O1-C1-C2-O2

There are no ring outliers.

3 monomers are involved in 3 short contacts:

Mol	Chain	Res	Type	Clashes	Symm-Clashes
8	A	1307	EDO	1	0
8	A	1312	EDO	1	0
8	A	1313	EDO	1	0

5.7 Other polymers [i](#)

There are no such residues in this entry.

5.8 Polymer linkage issues [i](#)

There are no chain breaks in this entry.

6 Fit of model and data [i](#)

6.1 Protein, DNA and RNA chains [i](#)

In the following table, the column labelled ‘#RSRZ > 2’ contains the number (and percentage) of RSRZ outliers, followed by percent RSRZ outliers for the chain as percentile scores relative to all X-ray entries and entries of similar resolution. The OWAB column contains the minimum, median, 95th percentile and maximum values of the occupancy-weighted average B-factor per residue. The column labelled ‘Q < 0.9’ lists the number of (and percentage) of residues with an average occupancy less than 0.9.

Mol	Chain	Analysed	<RSRZ>	#RSRZ>2	OWAB(Å ²)	Q<0.9
1	A	611/633 (96%)	0.01	15 (2%) 57 56	28, 44, 73, 117	0
2	B	15/30 (50%)	3.20	8 (53%) 0 0	55, 76, 130, 144	0
All	All	626/663 (94%)	0.09	23 (3%) 41 41	28, 45, 77, 144	0

The worst 5 of 23 RSRZ outliers are listed below:

Mol	Chain	Res	Type	RSRZ
2	B	27	HIS	6.9
2	B	25	PRO	6.9
2	B	30	GLY	6.6
1	A	951	GLU	6.5
2	B	28	TRP	6.4

6.2 Non-standard residues in protein, DNA, RNA chains [i](#)

In the following table, the Atoms column lists the number of modelled atoms in the group and the number defined in the chemical component dictionary. The B-factors column lists the minimum, median, 95th percentile and maximum values of B factors of atoms in the group. The column labelled ‘Q < 0.9’ lists the number of atoms with occupancy less than 0.9.

Mol	Type	Chain	Res	Atoms	RSCC	RSR	B-factors(Å ²)	Q<0.9
1	OCS	A	1032	9/10	0.98	0.11	35,37,44,47	0

6.3 Carbohydrates [i](#)

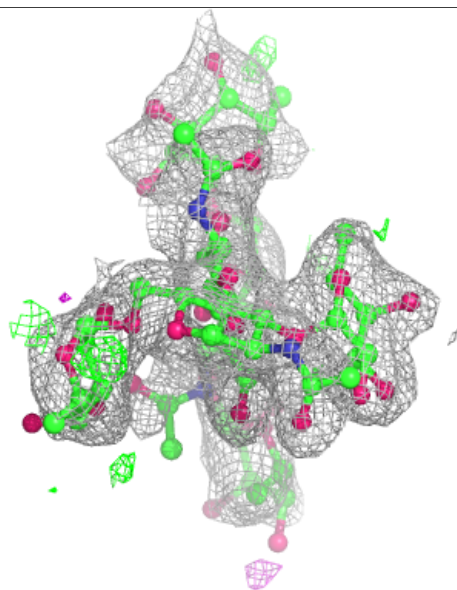
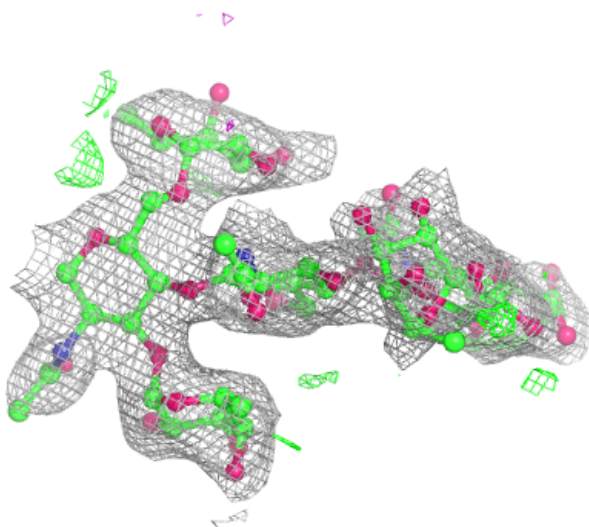
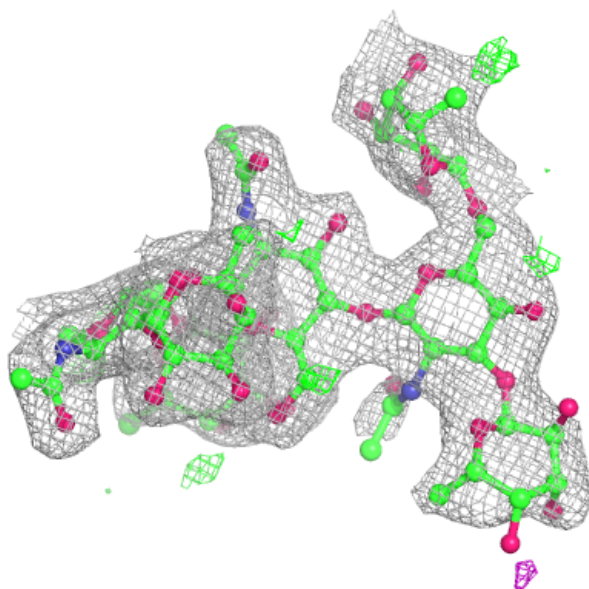
In the following table, the Atoms column lists the number of modelled atoms in the group and the number defined in the chemical component dictionary. The B-factors column lists the minimum, median, 95th percentile and maximum values of B factors of atoms in the group. The column labelled ‘Q < 0.9’ lists the number of atoms with occupancy less than 0.9.

Mol	Type	Chain	Res	Atoms	RSCC	RSR	B-factors(\AA^2)	Q<0.9
5	BMA	E	3	11/12	0.48	0.44	92,101,113,115	0
4	NAG	D	2	14/15	0.61	0.36	89,104,109,111	0
4	NAG	C	2	14/15	0.71	0.40	91,105,112,116	0
3	FUC	F	5	10/11	0.81	0.29	72,89,94,98	0
4	NAG	D	1	14/15	0.83	0.23	58,74,88,92	0
3	FUC	F	4	10/11	0.85	0.27	86,97,107,116	0
4	NAG	C	1	14/15	0.86	0.13	57,73,81,102	0
3	NAG	F	3	14/15	0.87	0.18	68,83,100,101	0
5	NAG	E	2	14/15	0.88	0.24	50,61,80,90	0
3	FUC	F	7	10/11	0.90	0.17	52,63,69,74	0
5	NAG	E	1	14/15	0.94	0.11	41,52,60,63	0
3	NAG	F	1	14/15	0.94	0.15	46,51,54,57	0
3	NAG	F	2	14/15	0.94	0.11	45,58,70,74	0
3	FUC	F	6	10/11	0.96	0.14	39,47,51,51	0

The following is a graphical depiction of the model fit to experimental electron density for oligosaccharide. Each fit is shown from different orientation to approximate a three-dimensional view.

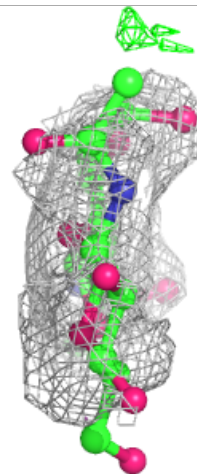
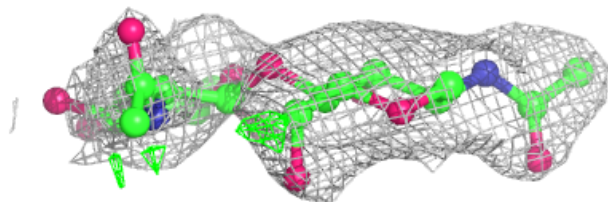
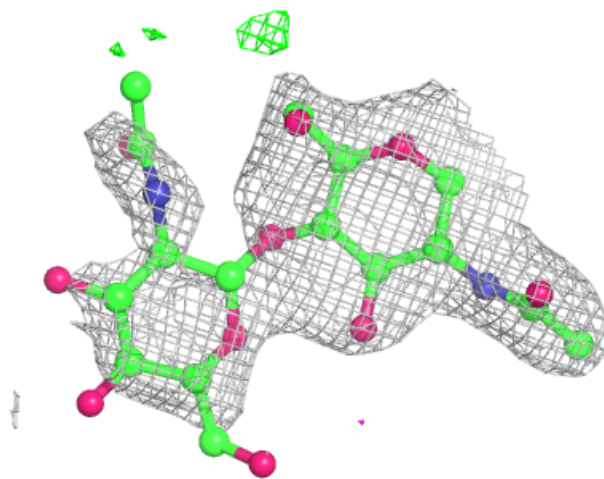
Electron density around Chain F:

$2mF_o-DF_c$ (at 0.7 rmsd) in gray
 mF_o-DF_c (at 3 rmsd) in purple (negative)
and green (positive)



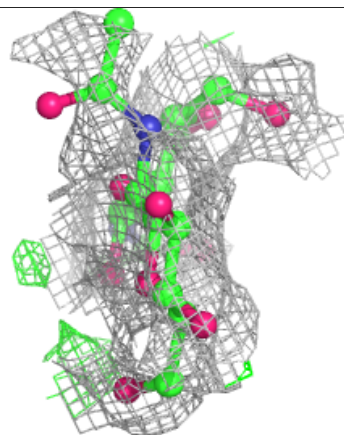
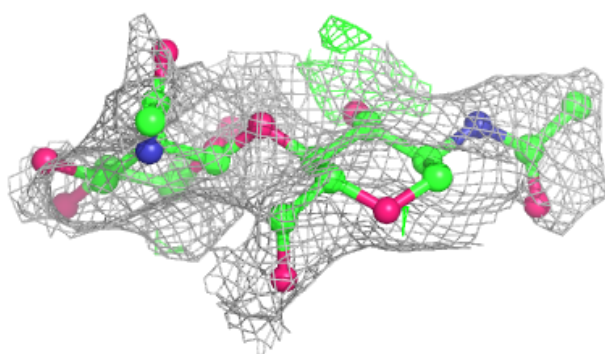
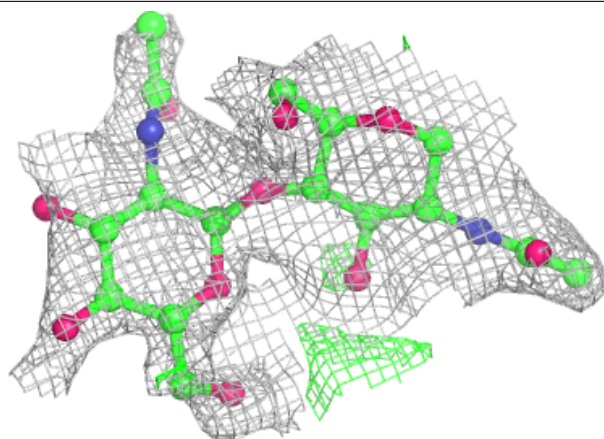
Electron density around Chain C:

$2mF_o-DF_c$ (at 0.7 rmsd) in gray
 mF_o-DF_c (at 3 rmsd) in purple (negative)
and green (positive)

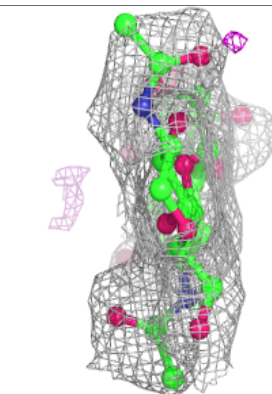
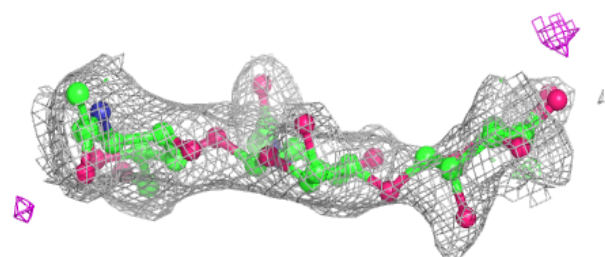
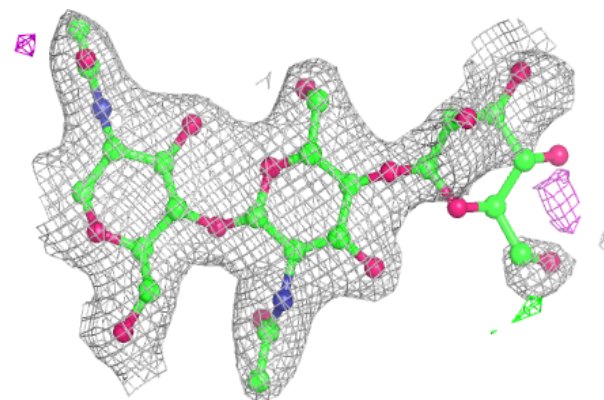


Electron density around Chain D:

$2mF_o-DF_c$ (at 0.7 rmsd) in gray
 mF_o-DF_c (at 3 rmsd) in purple (negative)
and green (positive)

**Electron density around Chain E:**

$2mF_o-DF_c$ (at 0.7 rmsd) in gray
 mF_o-DF_c (at 3 rmsd) in purple (negative)
and green (positive)



6.4 Ligands [i](#)

In the following table, the Atoms column lists the number of modelled atoms in the group and the number defined in the chemical component dictionary. The B-factors column lists the minimum, median, 95th percentile and maximum values of B factors of atoms in the group. The column labelled 'Q< 0.9' lists the number of atoms with occupancy less than 0.9.

Mol	Type	Chain	Res	Atoms	RSCC	RSR	B-factors(Å ²)	Q<0.9
6	NAG	A	1301	14/15	0.68	0.24	81,102,110,112	0
8	EDO	A	1317	4/4	0.78	0.14	63,65,67,67	0
8	EDO	A	1318	4/4	0.79	0.19	49,55,57,61	0
8	EDO	A	1309	4/4	0.81	0.20	50,51,56,60	0
8	EDO	A	1311	4/4	0.83	0.25	37,45,56,61	0
8	EDO	A	1305	4/4	0.84	0.16	60,64,70,75	0
7	CA	A	1304	1/1	0.85	0.12	75,75,75,75	0
7	CA	A	1303	1/1	0.86	0.08	66,66,66,66	0
8	EDO	A	1314	4/4	0.87	0.17	49,51,62,67	0
8	EDO	A	1310	4/4	0.88	0.29	46,56,60,67	0
8	EDO	A	1308	4/4	0.90	0.14	55,57,62,62	0
8	EDO	A	1307	4/4	0.90	0.16	61,63,64,67	0
8	EDO	A	1313	4/4	0.90	0.22	51,57,60,63	0
7	CA	A	1302	1/1	0.91	0.12	74,74,74,74	0
8	EDO	A	1312	4/4	0.93	0.36	56,58,61,78	0
8	EDO	A	1306	4/4	0.94	0.15	50,60,72,79	0
8	EDO	A	1316	4/4	0.94	0.15	50,54,58,59	0
8	EDO	A	1315	4/4	0.95	0.11	51,60,68,69	0
9	MES	A	1319	12/12	0.96	0.12	35,45,54,63	0

6.5 Other polymers [i](#)

There are no such residues in this entry.