



# Full wwPDB X-ray Structure Validation Report ⓘ

May 16, 2020 – 10:23 pm BST

PDB ID : 1DWC  
Title : CRYSTALLOGRAPHIC ANALYSIS AT 3.0-ANGSTROMS RESOLUTION OF THE BINDING TO HUMAN THROMBIN OF FOUR ACTIVE SITE-DIRECTED INHIBITORS  
Authors : Banner, D.W.; Hadvary, P.  
Deposited on : 1992-08-19  
Resolution : 3.00 Å(reported)

This is a Full wwPDB X-ray Structure Validation Report for a publicly released PDB entry.

We welcome your comments at [validation@mail.wwpdb.org](mailto:validation@mail.wwpdb.org)

A user guide is available at

<https://www.wwpdb.org/validation/2017/XrayValidationReportHelp>

with specific help available everywhere you see the ⓘ symbol.

---

The following versions of software and data (see [references ⓘ](#)) were used in the production of this report:

MolProbity : 4.02b-467  
Mogul : 1.8.5 (274361), CSD as541be (2020)  
Xtrriage (Phenix) : **NOT EXECUTED**  
EDS : **NOT EXECUTED**  
buster-report : 1.1.7 (2018)  
Percentile statistics : 20191225.v01 (using entries in the PDB archive December 25th 2019)  
Ideal geometry (proteins) : Engh & Huber (2001)  
Ideal geometry (DNA, RNA) : Parkinson et al. (1996)  
Validation Pipeline (wwPDB-VP) : 2.11

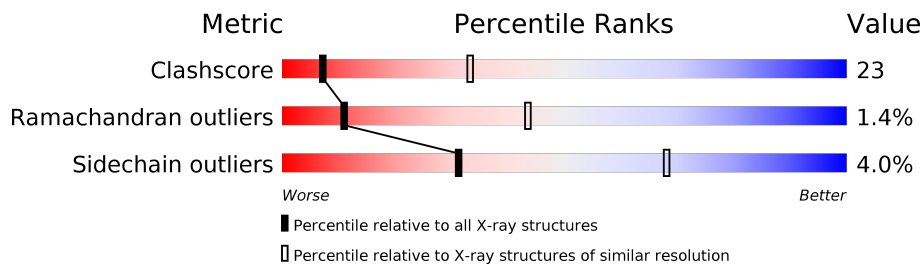
# 1 Overall quality at a glance

The following experimental techniques were used to determine the structure:

*X-RAY DIFFRACTION*

The reported resolution of this entry is 3.00 Å.

Percentile scores (ranging between 0-100) for global validation metrics of the entry are shown in the following graphic. The table shows the number of entries on which the scores are based.



Metric	Whole archive (#Entries)	Similar resolution (#Entries, resolution range(Å))
Clashscore	141614	2416 (3.00-3.00)
Ramachandran outliers	138981	2333 (3.00-3.00)
Sidechain outliers	138945	2336 (3.00-3.00)

The table below summarises the geometric issues observed across the polymeric chains and their fit to the electron density. The red, orange, yellow and green segments on the lower bar indicate the fraction of residues that contain outliers for  $\geq 3$ , 2, 1 and 0 types of geometric quality criteria respectively. A grey segment represents the fraction of residues that are not modelled. The numeric value for each fraction is indicated below the corresponding segment, with a dot representing fractions  $\leq 5\%$ .

Note EDS was not executed.

Mol	Chain	Length	Quality of chain
1	L	36	
2	H	259	
3	I	11	

The following table lists non-polymeric compounds, carbohydrate monomers and non-standard residues in protein, DNA, RNA chains that are outliers for geometric or electron-density-fit criteria:

Mol	Type	Chain	Res	Chirality	Geometry	Clashes	Electron density
4	MIT	H	1	X	-	-	-

## 2 Entry composition

There are 5 unique types of molecules in this entry. The entry contains 2437 atoms, of which 0 are hydrogens and 0 are deuteriums.

In the tables below, the ZeroOcc column contains the number of atoms modelled with zero occupancy, the AltConf column contains the number of residues with at least one atom in alternate conformation and the Trace column contains the number of residues modelled with at most 2 atoms.

- Molecule 1 is a protein called ALPHA-THROMBIN (SMALL SUBUNIT).

Mol	Chain	Residues	Atoms					ZeroOcc	AltConf	Trace
			Total	C	N	O	S			
1	L	29	235	147	38	49	1	0	0	0

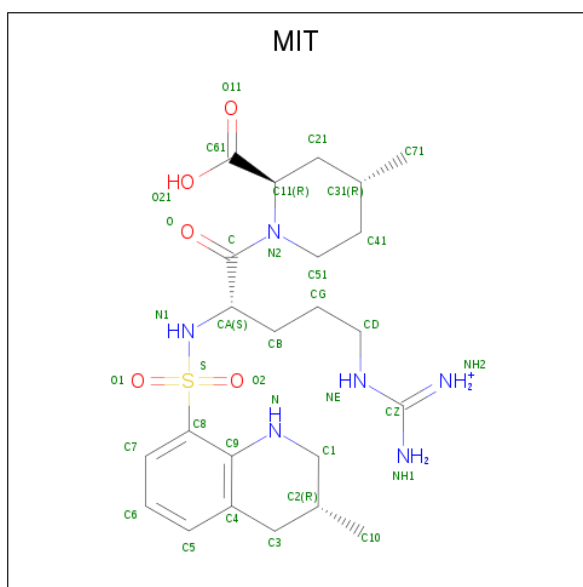
- Molecule 2 is a protein called ALPHA-THROMBIN (LARGE SUBUNIT).

Mol	Chain	Residues	Atoms					ZeroOcc	AltConf	Trace
			Total	C	N	O	S			
2	H	258	2031	1300	350	367	14	0	0	1

- Molecule 3 is a protein called HIRUDIN IIIA.

Mol	Chain	Residues	Atoms				ZeroOcc	AltConf	Trace
			Total	C	N	O			
3	I	11	86	57	10	19	0	0	1

- Molecule 4 is amino{[(4S)-5-[(2R,4R)-2-carboxy-4-methylpiperidin-1-yl]-4-([(3R)-3-methyl-1,2,3,4-tetrahydroquinolin-8-yl]sulfonyl)amino]-5-oxopentyl]amino}methaniminium (three-letter code: MIT) (formula: C<sub>23</sub>H<sub>37</sub>N<sub>6</sub>O<sub>5</sub>S).



Mol	Chain	Residues	Atoms					ZeroOcc	AltConf
			Total	C	N	O	S		
4	H	1	35	23	6	5	1	0	0

- Molecule 5 is water.

Mol	Chain	Residues	Atoms	ZeroOcc	AltConf
5	L	4	Total O 4 4	0	0
5	H	42	Total O 42 42	0	0
5	I	4	Total O 4 4	0	0

### 3 Residue-property plots [i](#)

These plots are drawn for all protein, RNA and DNA chains in the entry. The first graphic for a chain summarises the proportions of the various outlier classes displayed in the second graphic. The second graphic shows the sequence view annotated by issues in geometry. Residues are color-coded according to the number of geometric quality criteria for which they contain at least one outlier: green = 0, yellow = 1, orange = 2 and red = 3 or more. Stretches of 2 or more consecutive residues without any outlier are shown as a green connector. Residues present in the sample, but not in the model, are shown in grey.

Note EDS was not executed.

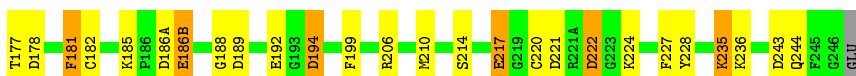
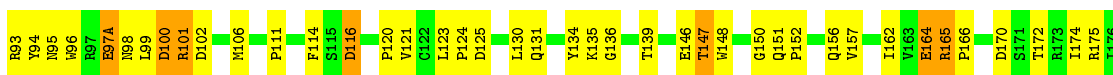
- Molecule 1: ALPHA-THROMBIN (SMALL SUBUNIT)

Chain L: 



- Molecule 2: ALPHA-THROMBIN (LARGE SUBUNIT)

Chain H: 



- Molecule 3: HIRUDIN IIIA

Chain I: 



## 4 Data and refinement statistics

Xtrriage (Phenix) and EDS were not executed - this section is therefore incomplete.

Property	Value	Source
Space group	P 43 21 2	Depositor
Cell constants a, b, c, $\alpha$ , $\beta$ , $\gamma$	90.80Å 90.80Å 132.50Å 90.00° 90.00° 90.00°	Depositor
Resolution (Å)	25.00 – 3.00	Depositor
% Data completeness (in resolution range)	(Not available) (25.00-3.00)	Depositor
$R_{merge}$	(Not available)	Depositor
$R_{sym}$	(Not available)	Depositor
Refinement program	TNT	Depositor
R, $R_{free}$	0.150 , (Not available)	Depositor
Estimated twinning fraction	No twinning to report.	Xtrriage
Total number of atoms	2437	wwPDB-VP
Average B, all atoms (Å <sup>2</sup> )	20.0	wwPDB-VP

## 5 Model quality

### 5.1 Standard geometry

Bond lengths and bond angles in the following residue types are not validated in this section: MIT

The Z score for a bond length (or angle) is the number of standard deviations the observed value is removed from the expected value. A bond length (or angle) with  $|Z| > 5$  is considered an outlier worth inspection. RMSZ is the root-mean-square of all Z scores of the bond lengths (or angles).

Mol	Chain	Bond lengths		Bond angles	
		RMSZ	# Z  >5	RMSZ	# Z  >5
1	L	1.32	4/237 (1.7%)	1.31	2/316 (0.6%)
2	H	0.97	11/2086 (0.5%)	1.18	25/2832 (0.9%)
3	I	1.57	3/88 (3.4%)	1.42	2/119 (1.7%)
All	All	1.04	18/2411 (0.7%)	1.20	29/3267 (0.9%)

All (18) bond length outliers are listed below:

Mol	Chain	Res	Type	Atoms	Z	Observed(Å)	Ideal(Å)
1	L	14(E)	GLU	CD-OE1	7.52	1.33	1.25
3	I	4	GLU	CD-OE2	7.36	1.33	1.25
2	H	18	GLU	CD-OE2	7.25	1.33	1.25
2	H	192	GLU	CD-OE2	6.72	1.33	1.25
2	H	186(B)	GLU	CD-OE2	6.60	1.32	1.25
3	I	3	GLU	CD-OE2	6.55	1.32	1.25
2	H	77	GLU	CD-OE2	6.46	1.32	1.25
1	L	13	GLU	CD-OE1	6.38	1.32	1.25
3	I	7	GLU	CD-OE2	6.34	1.32	1.25
2	H	217	GLU	CD-OE2	6.32	1.32	1.25
2	H	164	GLU	CD-OE2	6.26	1.32	1.25
1	L	14(H)	GLU	CD-OE1	5.93	1.32	1.25
2	H	86	GLU	CD-OE2	5.90	1.32	1.25
2	H	39	GLU	CD-OE2	5.88	1.32	1.25
2	H	97(A)	GLU	CD-OE1	5.61	1.31	1.25
2	H	61	GLU	CD-OE1	5.34	1.31	1.25
1	L	8	GLU	CD-OE2	-5.33	1.19	1.25
2	H	23	GLU	CD-OE1	5.11	1.31	1.25

All (29) bond angle outliers are listed below:

Mol	Chain	Res	Type	Atoms	Z	Observed(°)	Ideal(°)
2	H	189	ASP	CB-CG-OD1	-8.90	110.29	118.30
2	H	60(E)	ASP	CB-CG-OD2	-8.41	110.73	118.30
2	H	189	ASP	CB-CG-OD2	8.28	125.75	118.30
2	H	194	ASP	CB-CG-OD1	-7.45	111.60	118.30
2	H	194	ASP	CB-CG-OD2	7.43	124.99	118.30
2	H	186(A)	ASP	CB-CG-OD1	-7.29	111.74	118.30
2	H	178	ASP	CB-CG-OD2	-7.25	111.78	118.30
2	H	101	ARG	NE-CZ-NH1	7.11	123.85	120.30
1	L	14(L)	ASP	CB-CG-OD2	-6.98	112.02	118.30
2	H	49	ASP	CB-CG-OD1	-6.98	112.02	118.30
2	H	186(A)	ASP	CB-CG-OD2	6.96	124.57	118.30
2	H	102	ASP	CB-CG-OD2	-6.86	112.12	118.30
2	H	170	ASP	CB-CG-OD2	-6.42	112.52	118.30
2	H	60(E)	ASP	CB-CG-OD1	6.30	123.97	118.30
2	H	170	ASP	CB-CG-OD1	6.13	123.82	118.30
2	H	221	ASP	CB-CG-OD1	-5.98	112.92	118.30
3	I	1	ASP	CB-CG-OD2	-5.86	113.03	118.30
2	H	222	ASP	CB-CG-OD2	-5.84	113.04	118.30
1	L	14(L)	ASP	CB-CG-OD1	5.75	123.47	118.30
2	H	21	ASP	CB-CG-OD1	-5.63	113.23	118.30
2	H	178	ASP	CB-CG-OD1	5.52	123.27	118.30
2	H	116	ASP	CB-CG-OD2	-5.50	113.36	118.30
2	H	49	ASP	CB-CG-OD2	5.24	123.02	118.30
2	H	100	ASP	CB-CG-OD2	-5.20	113.62	118.30
2	H	125	ASP	CB-CG-OD1	-5.16	113.66	118.30
3	I	1	ASP	CB-CG-OD1	5.11	122.90	118.30
2	H	116	ASP	CB-CG-OD1	5.09	122.89	118.30
2	H	49	ASP	N-CA-CB	-5.06	101.48	110.60
2	H	100	ASP	CB-CG-OD1	5.05	122.85	118.30

There are no chirality outliers.

There are no planarity outliers.

## 5.2 Too-close contacts [i](#)

In the following table, the Non-H and H(model) columns list the number of non-hydrogen atoms and hydrogen atoms in the chain respectively. The H(added) column lists the number of hydrogen atoms added and optimized by MolProbity. The Clashes column lists the number of clashes within the asymmetric unit, whereas Symm-Clashes lists symmetry related clashes.

Mol	Chain	Non-H	H(model)	H(added)	Clashes	Symm-Clashes
1	L	235	0	231	13	0

*Continued on next page...*



*Continued from previous page...*

Mol	Chain	Non-H	H(model)	H(added)	Clashes	Symm-Clashes
2	H	2031	0	1959	92	0
3	I	86	0	69	6	0
4	H	35	0	36	2	0
5	H	42	0	0	5	0
5	I	4	0	0	0	0
5	L	4	0	0	0	0
All	All	2437	0	2295	106	0

The all-atom clashscore is defined as the number of clashes found per 1000 atoms (including hydrogen atoms). The all-atom clashscore for this structure is 23.

All (106) close contacts within the same asymmetric unit are listed below, sorted by their clash magnitude.

Atom-1	Atom-2	Interatomic distance (Å)	Clash overlap (Å)
2:H:172:THR:HG22	2:H:174:ILE:H	1.29	0.94
2:H:95:ASN:HD21	2:H:97(A):GLU:HG3	1.39	0.88
2:H:95:ASN:HD21	2:H:97(A):GLU:CG	1.97	0.76
2:H:41:LEU:HD12	2:H:64:LEU:HD23	1.70	0.74
2:H:60(B):PRO:HG2	2:H:96:TRP:CZ2	2.23	0.73
2:H:95:ASN:ND2	2:H:97(A):GLU:HG3	2.04	0.73
1:L:10:LYS:HB3	1:L:12:LEU:HD12	1.69	0.73
3:I:5:ILE:HB	3:I:6:PRO:HD2	1.71	0.71
2:H:148:TRP:CZ2	2:H:150:GLY:HA3	2.26	0.70
2:H:54:THR:CG2	2:H:106:MET:HE2	2.22	0.70
1:L:10:LYS:HB3	1:L:12:LEU:CD1	2.21	0.70
2:H:60(B):PRO:HG2	2:H:96:TRP:CE2	2.27	0.70
2:H:151:GLN:HG2	5:H:259:HOH:O	1.92	0.69
2:H:54:THR:HG21	2:H:106:MET:HE2	1.75	0.69
2:H:146:GLU:HB2	2:H:220:CYS:HB2	1.74	0.68
2:H:60:LEU:HD23	2:H:60:LEU:O	1.93	0.67
2:H:23:GLU:HG3	2:H:26:MET:HE3	1.78	0.66
2:H:60:LEU:CD2	2:H:94:TYR:HE2	2.09	0.66
2:H:185:LYS:HB2	2:H:186(B):GLU:HG3	1.77	0.65
4:H:1:MIT:HB3	4:H:1:MIT:O21	1.95	0.65
2:H:60(A):TYR:CZ	2:H:60(C):PRO:HG2	2.32	0.65
2:H:91:HIS:ND1	2:H:92:PRO:HD2	2.12	0.65
2:H:60:LEU:HD22	2:H:94:TYR:HE2	1.62	0.64
2:H:91:HIS:CG	2:H:92:PRO:HD2	2.32	0.64
2:H:50:ARG:HG2	2:H:111:PRO:HA	1.79	0.64
2:H:49:ASP:OD1	2:H:50:ARG:HG3	1.98	0.62
2:H:54:THR:HG21	2:H:106:MET:CE	2.29	0.62

*Continued on next page...*

*Continued from previous page...*

Atom-1	Atom-2	Interatomic distance (Å)	Clash overlap (Å)
3:I:6:PRO:HG2	3:I:9:TYR:HE2	1.64	0.62
1:L:13:GLU:HB2	1:L:14(C):GLU:OE1	2.01	0.61
2:H:131:GLN:HB2	2:H:134:TYR:CD2	2.36	0.60
2:H:17:VAL:HG12	2:H:18:GLU:HG2	1.83	0.60
2:H:93:ARG:O	2:H:101:ARG:NH1	2.35	0.60
1:L:14(A):LYS:HG3	2:H:23:GLU:OE2	2.02	0.59
2:H:130:LEU:HD23	2:H:162:ILE:HD13	1.84	0.59
2:H:60(C):PRO:HD3	2:H:96:TRP:CZ3	2.38	0.58
2:H:131:GLN:HB2	2:H:134:TYR:CE2	2.38	0.58
2:H:172:THR:HG22	2:H:174:ILE:HG13	1.85	0.57
2:H:130:LEU:HD23	2:H:162:ILE:CD1	2.35	0.56
2:H:60:LEU:HD23	2:H:60:LEU:C	2.26	0.56
2:H:147:THR:HG23	2:H:148:TRP:N	2.21	0.56
2:H:91:HIS:CE1	2:H:92:PRO:HD2	2.40	0.56
2:H:136:GLY:HA3	2:H:199:PHE:CZ	2.42	0.55
2:H:94:TYR:CZ	2:H:96:TRP:HB3	2.41	0.55
2:H:23:GLU:H	2:H:26:MET:HE3	1.71	0.55
2:H:172:THR:CG2	2:H:174:ILE:HG13	2.35	0.55
1:L:1:CYS:O	2:H:206:ARG:NH1	2.39	0.55
2:H:60(A):TYR:CE1	2:H:60(C):PRO:HG2	2.42	0.54
2:H:60:LEU:HD22	2:H:94:TYR:CE2	2.42	0.54
2:H:35:ARG:O	2:H:38:GLN:HA	2.08	0.54
2:H:98:ASN:OD1	2:H:98:ASN:N	2.39	0.53
2:H:41:LEU:HD12	2:H:64:LEU:CD2	2.37	0.53
2:H:228:TYR:N	2:H:228:TYR:CD1	2.77	0.53
2:H:60(C):PRO:HD3	2:H:96:TRP:CE3	2.43	0.53
2:H:148:TRP:CH2	2:H:150:GLY:HA3	2.44	0.52
2:H:60(B):PRO:HG2	2:H:96:TRP:CH2	2.45	0.52
2:H:60(C):PRO:O	2:H:60(D):TRP:HD1	1.92	0.52
2:H:50:ARG:HD2	2:H:111:PRO:HG3	1.92	0.52
1:L:14(D):ARG:NH1	1:L:14(H):GLU:OE2	2.43	0.51
1:L:14(K):ILE:HG13	1:L:14(K):ILE:O	2.10	0.51
2:H:165:ARG:N	2:H:166:PRO:HD2	2.25	0.51
2:H:214:SER:HB3	2:H:227:PHE:O	2.10	0.51
1:L:14(E):GLU:OE2	2:H:135:LYS:NZ	2.38	0.51
2:H:33:LEU:HD11	2:H:106:MET:CE	2.41	0.50
2:H:124:PRO:O	2:H:235:LYS:HE3	2.12	0.50
1:L:10:LYS:O	1:L:12:LEU:HD12	2.12	0.49
2:H:147:THR:CG2	2:H:148:TRP:N	2.76	0.49
2:H:20:SER:O	2:H:156:GLN:HA	2.13	0.49
2:H:100:ASP:OD1	2:H:177:THR:OG1	2.27	0.48

*Continued on next page...*

Continued from previous page...

Atom-1	Atom-2	Interatomic distance (Å)	Clash overlap (Å)
2:H:164:GLU:CD	2:H:164:GLU:H	2.16	0.48
2:H:46:LEU:HD11	2:H:48:SER:O	2.13	0.48
3:I:5:ILE:HB	3:I:6:PRO:CD	2.43	0.47
2:H:60(B):PRO:N	2:H:60(C):PRO:HD2	2.29	0.47
2:H:74:THR:HA	3:I:2:PHE:CD1	2.49	0.47
2:H:139:THR:HG22	2:H:157:VAL:HB	1.95	0.47
2:H:59:LEU:HD13	2:H:88:ILE:HG21	1.96	0.47
3:I:6:PRO:HG2	3:I:9:TYR:CE2	2.47	0.47
5:H:282:HOH:O	3:I:4:GLU:HB2	2.14	0.47
2:H:33:LEU:HD11	2:H:106:MET:HE3	1.97	0.47
1:L:3:LEU:O	1:L:9:LYS:HE3	2.15	0.46
2:H:98:ASN:ND2	2:H:175:ARG:O	2.28	0.46
2:H:114:PHE:CZ	2:H:120:PRO:HG3	2.52	0.45
2:H:156:GLN:HB2	5:H:266:HOH:O	2.15	0.45
2:H:172:THR:HG21	2:H:174:ILE:HB	1.98	0.45
2:H:70:LYS:HE3	2:H:72:SER:O	2.17	0.45
1:L:14(E):GLU:HG3	2:H:135:LYS:HZ2	1.82	0.44
4:H:1:MIT:HA	4:H:1:MIT:H11	1.63	0.44
2:H:98:ASN:O	2:H:99:LEU:HB2	2.17	0.44
2:H:164:GLU:C	2:H:166:PRO:HD2	2.38	0.43
2:H:181:PHE:HB2	5:H:276:HOH:O	2.18	0.43
2:H:23:GLU:CG	2:H:26:MET:HE3	2.45	0.43
2:H:29:TRP:CG	2:H:121:VAL:HB	2.54	0.43
2:H:60(B):PRO:O	2:H:60(D):TRP:N	2.51	0.43
2:H:210:MET:HB3	2:H:210:MET:HE3	1.84	0.42
2:H:222:ASP:HA	5:H:275:HOH:O	2.17	0.42
2:H:77:GLU:O	2:H:80:GLU:HG2	2.19	0.42
2:H:236:LYS:HD3	2:H:236:LYS:HA	1.87	0.42
2:H:151:GLN:HA	2:H:152:PRO:HD3	1.92	0.42
1:L:6:LEU:HD21	2:H:116:ASP:HB3	2.01	0.42
2:H:47:ILE:O	2:H:48:SER:HB3	2.20	0.42
2:H:217:GLU:OE1	2:H:224:LYS:NZ	2.49	0.41
2:H:165:ARG:N	2:H:166:PRO:CD	2.83	0.41
2:H:17:VAL:O	2:H:188:GLY:HA2	2.20	0.41
2:H:16:ILE:HD13	2:H:194:ASP:OD2	2.21	0.41
1:L:14(E):GLU:CD	2:H:135:LYS:HZ3	2.22	0.41
2:H:33:LEU:HD22	2:H:64:LEU:HD22	2.03	0.40
2:H:123:LEU:HA	2:H:123:LEU:HD23	1.95	0.40

There are no symmetry-related clashes.

## 5.3 Torsion angles [i](#)

### 5.3.1 Protein backbone [i](#)

In the following table, the Percentiles column shows the percent Ramachandran outliers of the chain as a percentile score with respect to all X-ray entries followed by that with respect to entries of similar resolution.

The Analysed column shows the number of residues for which the backbone conformation was analysed, and the total number of residues.

Mol	Chain	Analysed	Favoured	Allowed	Outliers	Percentiles	
1	L	27/36 (75%)	24 (89%)	2 (7%)	1 (4%)	3	19
2	H	256/259 (99%)	237 (93%)	16 (6%)	3 (1%)	13	48
3	I	9/11 (82%)	9 (100%)	0	0	100	100
All	All	292/306 (95%)	270 (92%)	18 (6%)	4 (1%)	11	43

All (4) Ramachandran outliers are listed below:

Mol	Chain	Res	Type
2	H	57	HIS
2	H	244	GLN
2	H	49	ASP
1	L	14(K)	ILE

### 5.3.2 Protein sidechains [i](#)

In the following table, the Percentiles column shows the percent sidechain outliers of the chain as a percentile score with respect to all X-ray entries followed by that with respect to entries of similar resolution.

The Analysed column shows the number of residues for which the sidechain conformation was analysed, and the total number of residues.

Mol	Chain	Analysed	Rotameric	Outliers	Percentiles	
1	L	26/31 (84%)	25 (96%)	1 (4%)	33	69
2	H	214/225 (95%)	206 (96%)	8 (4%)	34	70
3	I	8/11 (73%)	7 (88%)	1 (12%)	4	20
All	All	248/267 (93%)	238 (96%)	10 (4%)	31	68

All (10) residues with a non-rotameric sidechain are listed below:

Mol	Chain	Res	Type
1	L	1(A)	ASP
2	H	49	ASP
2	H	64	LEU
2	H	147	THR
2	H	165	ARG
2	H	181	PHE
2	H	182	CYS
2	H	235	LYS
2	H	243	ASP
3	I	7	GLU

Some sidechains can be flipped to improve hydrogen bonding and reduce clashes. All (3) such sidechains are listed below:

Mol	Chain	Res	Type
2	H	30	GLN
2	H	95	ASN
2	H	239	GLN

### 5.3.3 RNA [i](#)

There are no RNA molecules in this entry.

## 5.4 Non-standard residues in protein, DNA, RNA chains [i](#)

There are no non-standard protein/DNA/RNA residues in this entry.

## 5.5 Carbohydrates [i](#)

There are no carbohydrates in this entry.

## 5.6 Ligand geometry [i](#)

1 ligand is modelled in this entry.

In the following table, the Counts columns list the number of bonds (or angles) for which Mogul statistics could be retrieved, the number of bonds (or angles) that are observed in the model and the number of bonds (or angles) that are defined in the Chemical Component Dictionary. The Link column lists molecule types, if any, to which the group is linked. The Z score for a bond length (or angle) is the number of standard deviations the observed value is removed from the

expected value. A bond length (or angle) with  $|Z| > 2$  is considered an outlier worth inspection. RMSZ is the root-mean-square of all  $Z$  scores of the bond lengths (or angles).

Mol	Type	Chain	Res	Link	Bond lengths			Bond angles		
					Counts	RMSZ	# Z  > 2	Counts	RMSZ	# Z  > 2
4	MIT	H	1	-	34,37,37	1.48	5 (14%)	42,53,53	1.52	8 (19%)

In the following table, the Chirals column lists the number of chiral outliers, the number of chiral centers analysed, the number of these observed in the model and the number defined in the Chemical Component Dictionary. Similar counts are reported in the Torsion and Rings columns. '-' means no outliers of that kind were identified.

Mol	Type	Chain	Res	Link	Chirals	Torsions	Rings
4	MIT	H	1	-	1/1/9/12	4/26/52/52	0/3/3/3

All (5) bond length outliers are listed below:

Mol	Chain	Res	Type	Atoms	Z	Observed(Å)	Ideal(Å)
4	H	1	MIT	S-N1	4.92	1.70	1.61
4	H	1	MIT	C9-N	-3.25	1.31	1.37
4	H	1	MIT	C3-C4	-2.45	1.46	1.51
4	H	1	MIT	C51-N2	-2.23	1.43	1.47
4	H	1	MIT	C1-C2	-2.11	1.48	1.52

All (8) bond angle outliers are listed below:

Mol	Chain	Res	Type	Atoms	Z	Observed(°)	Ideal(°)
4	H	1	MIT	O2-S-C8	-5.20	99.10	107.66
4	H	1	MIT	O2-S-O1	3.44	123.78	119.55
4	H	1	MIT	C5-C4-C9	2.63	121.75	117.46
4	H	1	MIT	C71-C31-C21	-2.22	107.41	111.18
4	H	1	MIT	C3-C4-C9	-2.12	117.41	120.05
4	H	1	MIT	C4-C3-C2	-2.12	109.15	113.63
4	H	1	MIT	C51-N2-C11	2.11	119.94	115.35
4	H	1	MIT	C8-S-N1	2.03	111.34	108.30

All (1) chirality outliers are listed below:

Mol	Chain	Res	Type	Atom
4	H	1	MIT	C2

All (4) torsion outliers are listed below:

Mol	Chain	Res	Type	Atoms
4	H	1	MIT	N1-CA-CB-CG
4	H	1	MIT	CA-N1-S-C8

*Continued on next page...*

*Continued from previous page...*

Mol	Chain	Res	Type	Atoms
4	H	1	MIT	C-CA-CB-CG
4	H	1	MIT	CA-N1-S-O2

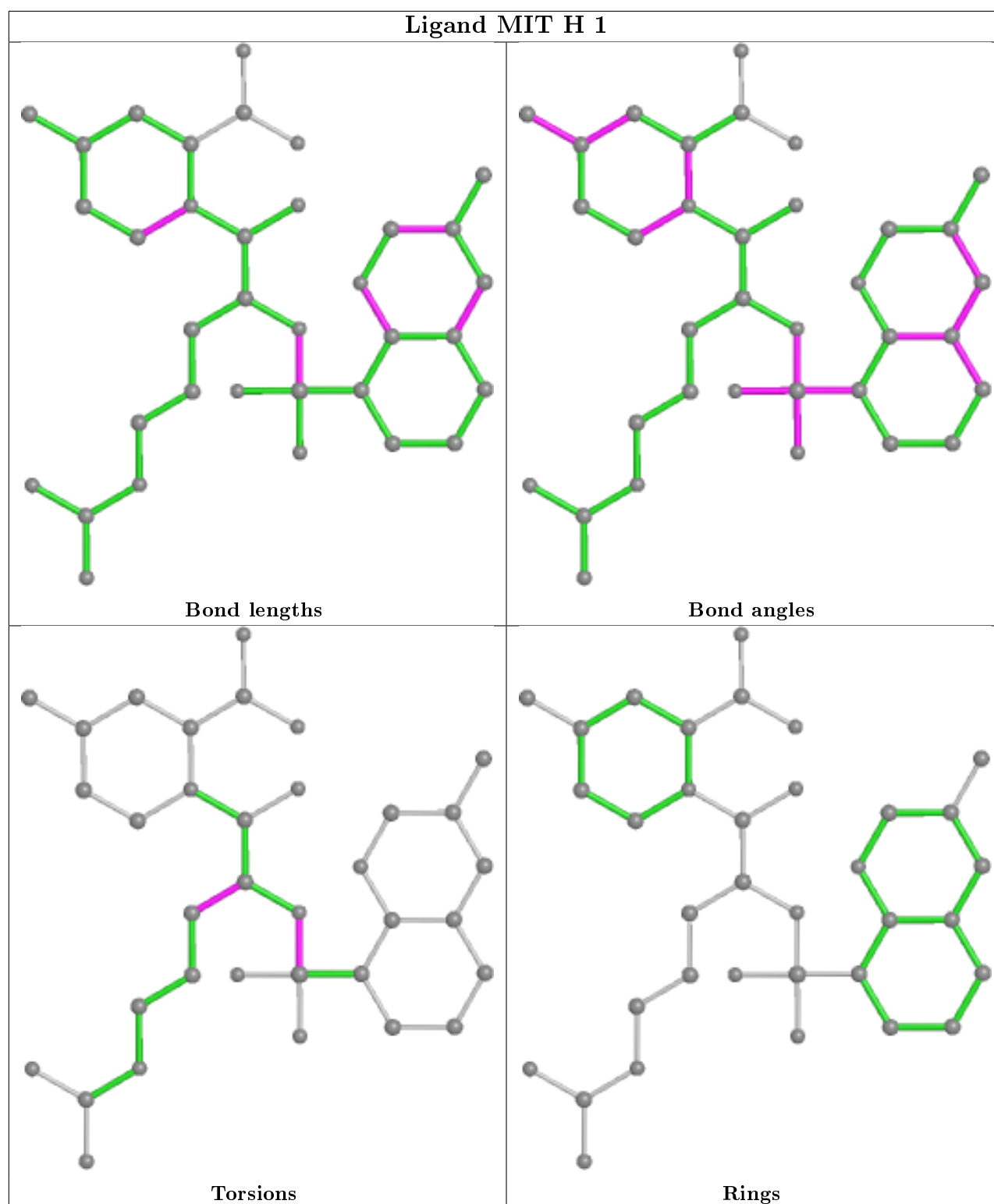
There are no ring outliers.

1 monomer is involved in 2 short contacts:

Mol	Chain	Res	Type	Clashes	Symm-Clashes
4	H	1	MIT	2	0

The following is a two-dimensional graphical depiction of Mogul quality analysis of bond lengths, bond angles, torsion angles, and ring geometry for all instances of the Ligand of Interest. In addition, ligands with molecular weight > 250 and outliers as shown on the validation Tables will also be included. For torsion angles, if less than 5% of the Mogul distribution of torsion angles is within 10 degrees of the torsion angle in question, then that torsion angle is considered an outlier. Any bond that is central to one or more torsion angles identified as an outlier by Mogul will be highlighted in the graph. For rings, the root-mean-square deviation (RMSD) between the ring in question and similar rings identified by Mogul is calculated over all ring torsion angles. If the average RMSD is greater than 60 degrees and the minimal RMSD between the ring in question and any Mogul-identified rings is also greater than 60 degrees, then that ring is considered an outlier. The outliers are highlighted in purple. The color gray indicates Mogul did not find sufficient equivalents in the CSD to analyse the geometry.





## 5.7 Other polymers [\(i\)](#)

There are no such residues in this entry.

## 5.8 Polymer linkage issues

There are no chain breaks in this entry.

## 6 Fit of model and data

### 6.1 Protein, DNA and RNA chains

EDS was not executed - this section is therefore empty.

### 6.2 Non-standard residues in protein, DNA, RNA chains

EDS was not executed - this section is therefore empty.

### 6.3 Carbohydrates

EDS was not executed - this section is therefore empty.

### 6.4 Ligands

EDS was not executed - this section is therefore empty.

### 6.5 Other polymers

EDS was not executed - this section is therefore empty.