



Full wwPDB X-ray Structure Validation Report ⓘ

Feb 11, 2024 – 06:57 PM EST

PDB ID : 3DY8
Title : Human Phosphodiesterase 9 in complex with product 5'-GMP (E+P complex)
Authors : Liu, S.; Mansour, M.N.; Dillman, K.; Perez, J.; Danley, D.; Menniti, F.
Deposited on : 2008-07-25
Resolution : 2.15 Å(reported)

This is a Full wwPDB X-ray Structure Validation Report for a publicly released PDB entry.

We welcome your comments at validation@mail.wwpdb.org

A user guide is available at

<https://www.wwpdb.org/validation/2017/XrayValidationReportHelp>

with specific help available everywhere you see the ⓘ symbol.

The types of validation reports are described at

<http://www.wwpdb.org/validation/2017/FAQs#types>.

The following versions of software and data (see [references ⓘ](#)) were used in the production of this report:

MolProbity : 4.02b-467
Mogul : 1.8.5 (274361), CSD as541be (2020)
Xtriage (Phenix) : 1.13
EDS : 2.36
buster-report : 1.1.7 (2018)
Percentile statistics : 20191225.v01 (using entries in the PDB archive December 25th 2019)
Refmac : 5.8.0158
CCP4 : 7.0.044 (Gargrove)
Ideal geometry (proteins) : Engh & Huber (2001)
Ideal geometry (DNA, RNA) : Parkinson et al. (1996)
Validation Pipeline (wwPDB-VP) : 2.36

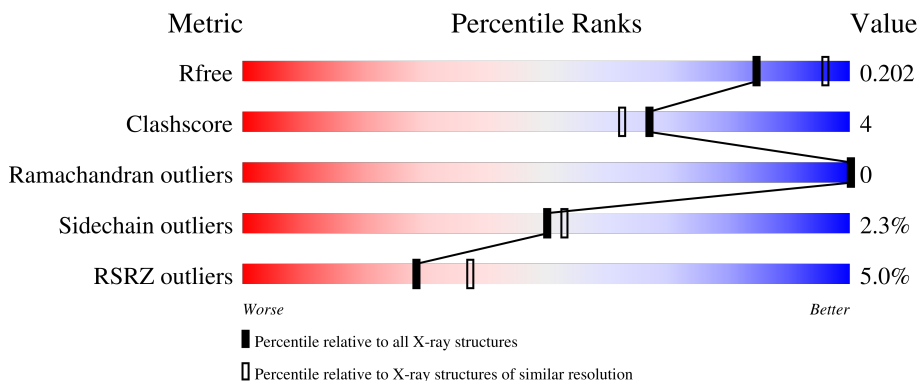
1 Overall quality at a glance

The following experimental techniques were used to determine the structure:

X-RAY DIFFRACTION

The reported resolution of this entry is 2.15 Å.

Percentile scores (ranging between 0-100) for global validation metrics of the entry are shown in the following graphic. The table shows the number of entries on which the scores are based.



Metric	Whole archive (#Entries)	Similar resolution (#Entries, resolution range(Å))
R_{free}	130704	1479 (2.16-2.16)
Clashscore	141614	1585 (2.16-2.16)
Ramachandran outliers	138981	1560 (2.16-2.16)
Sidechain outliers	138945	1559 (2.16-2.16)
RSRZ outliers	127900	1456 (2.16-2.16)

The table below summarises the geometric issues observed across the polymeric chains and their fit to the electron density. The red, orange, yellow and green segments of the lower bar indicate the fraction of residues that contain outliers for ≥ 3 , 2, 1 and 0 types of geometric quality criteria respectively. A grey segment represents the fraction of residues that are not modelled. The numeric value for each fraction is indicated below the corresponding segment, with a dot representing fractions $\leq 5\%$. The upper red bar (where present) indicates the fraction of residues that have poor fit to the electron density. The numeric value is given above the bar.

Mol	Chain	Length	Quality of chain
1	A	329	 4% 88% 10%
1	B	329	 6% 92% 7%

2 Entry composition

There are 7 unique types of molecules in this entry. The entry contains 5937 atoms, of which 0 are hydrogens and 0 are deuteriums.

In the tables below, the ZeroOcc column contains the number of atoms modelled with zero occupancy, the AltConf column contains the number of residues with at least one atom in alternate conformation and the Trace column contains the number of residues modelled with at most 2 atoms.

- Molecule 1 is a protein called human phosphodiesterase 9.

Mol	Chain	Residues	Atoms					ZeroOcc	AltConf	Trace
			Total	C	N	O	S			
1	A	328	2706	1732	449	494	31	0	0	0
1	B	328	2706	1732	449	494	31	0	0	0

There are 8 discrepancies between the modelled and reference sequences:

Chain	Residue	Modelled	Actual	Comment	Reference
A	178	GLY	-	expression tag	UNP O76083
A	179	SER	-	expression tag	UNP O76083
A	180	HIS	-	expression tag	UNP O76083
A	181	MET	-	expression tag	UNP O76083
B	178	GLY	-	expression tag	UNP O76083
B	179	SER	-	expression tag	UNP O76083
B	180	HIS	-	expression tag	UNP O76083
B	181	MET	-	expression tag	UNP O76083

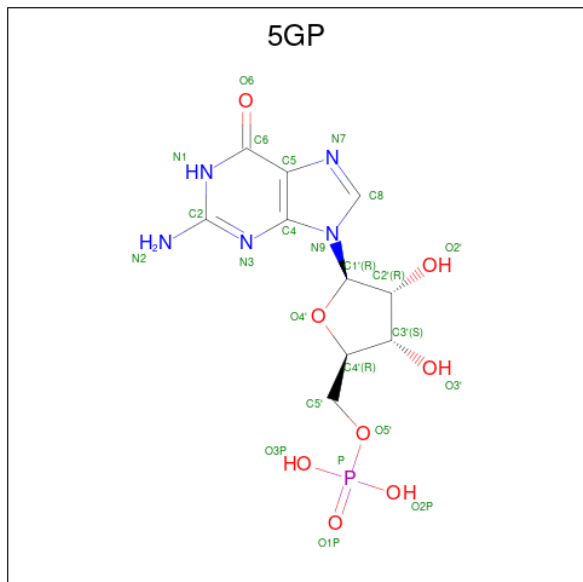
- Molecule 2 is MANGANESE (II) ION (three-letter code: MN) (formula: Mn).

Mol	Chain	Residues	Atoms		ZeroOcc	AltConf
2	A	1	Total	Mn	0	0
			1	1		
2	B	1	Total	Mn	0	0
			1	1		

- Molecule 3 is MAGNESIUM ION (three-letter code: MG) (formula: Mg).

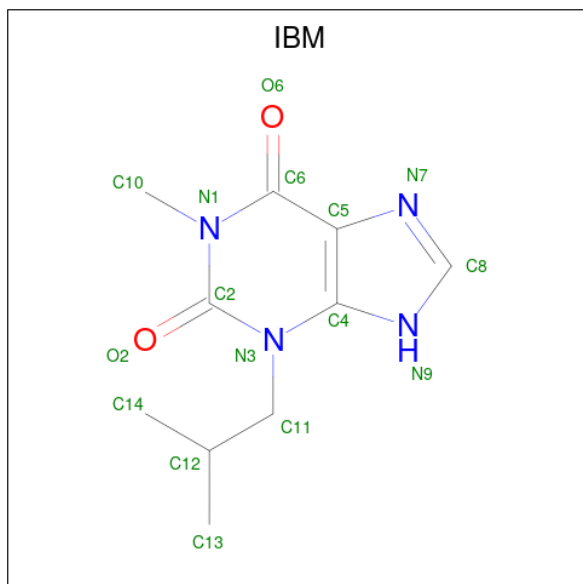
Mol	Chain	Residues	Atoms		ZeroOcc	AltConf
3	A	1	Total	Mg	0	0
			1	1		
3	B	1	Total	Mg	0	0
			1	1		

- Molecule 4 is GUANOSINE-5'-MONOPHOSPHATE (three-letter code: 5GP) (formula: $C_{10}H_{14}N_5O_8P$).



Mol	Chain	Residues	Atoms					ZeroOcc	AltConf
			Total	C	N	O	P		
4	A	1	24	10	5	8	1	0	0

- Molecule 5 is 3-ISOBUTYL-1-METHYLNANTHINE (three-letter code: IBM) (formula: $C_{10}H_{14}N_4O_2$).



Mol	Chain	Residues	Atoms				ZeroOcc	AltConf
			Total	C	N	O		
5	B	1	16	10	4	2	0	0

- Molecule 6 is FORMIC ACID (three-letter code: FMT) (formula: CH_2O_2).



Mol	Chain	Residues	Atoms		ZeroOcc	AltConf
6	B	1	Total	C O	0	0
			3	1 2		

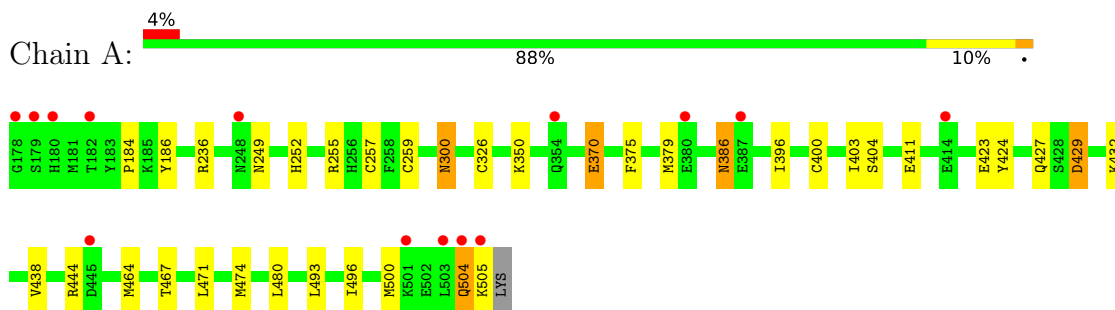
- Molecule 7 is water.

Mol	Chain	Residues	Atoms		ZeroOcc	AltConf
7	A	241	Total	O	0	0
			241	241		
7	B	237	Total	O	0	0
			237	237		

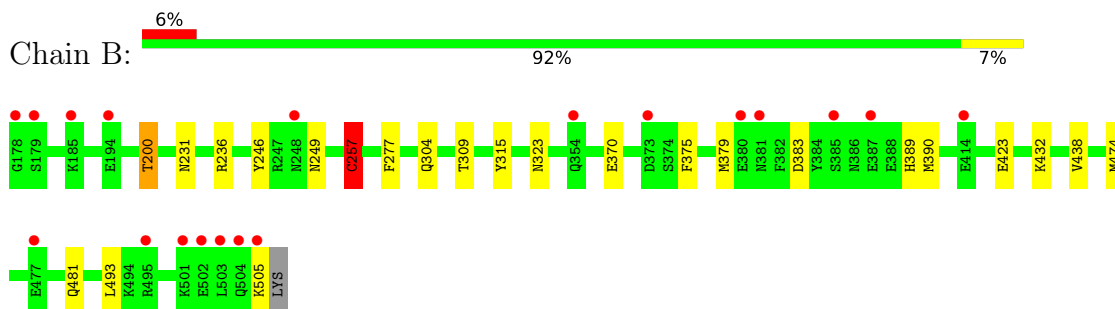
3 Residue-property plots [i](#)

These plots are drawn for all protein, RNA, DNA and oligosaccharide chains in the entry. The first graphic for a chain summarises the proportions of the various outlier classes displayed in the second graphic. The second graphic shows the sequence view annotated by issues in geometry and electron density. Residues are color-coded according to the number of geometric quality criteria for which they contain at least one outlier: green = 0, yellow = 1, orange = 2 and red = 3 or more. A red dot above a residue indicates a poor fit to the electron density ($RSRZ > 2$). Stretches of 2 or more consecutive residues without any outlier are shown as a green connector. Residues present in the sample, but not in the model, are shown in grey.

- Molecule 1: human phosphodiesterase 9



- Molecule 1: human phosphodiesterase 9



4 Data and refinement statistics

Property	Value	Source
Space group	P 41 21 2	Depositor
Cell constants a, b, c, α , β , γ	103.39Å 103.39Å 269.43Å 90.00° 90.00° 90.00°	Depositor
Resolution (Å)	10.00 – 2.15 10.00 – 2.00	Depositor EDS
% Data completeness (in resolution range)	97.1 (10.00-2.15) 98.5 (10.00-2.00)	Depositor EDS
R_{merge}	0.06	Depositor
R_{sym}	(Not available)	Depositor
$\langle I/\sigma(I) \rangle$ ¹	2.56 (at 2.01Å)	Xtrriage
Refinement program	REFMAC 5.2.0019	Depositor
R, R_{free}	0.175 , 0.199 0.181 , 0.202	Depositor DCC
R_{free} test set	9732 reflections (10.04%)	wwPDB-VP
Wilson B-factor (Å ²)	36.0	Xtrriage
Anisotropy	0.012	Xtrriage
Bulk solvent k_{sol} (e/Å ³), B_{sol} (Å ²)	0.39 , 48.0	EDS
L-test for twinning ²	$\langle L \rangle = 0.49$, $\langle L^2 \rangle = 0.32$	Xtrriage
Estimated twinning fraction	No twinning to report.	Xtrriage
F_o, F_c correlation	0.96	EDS
Total number of atoms	5937	wwPDB-VP
Average B, all atoms (Å ²)	40.0	wwPDB-VP

Xtrriage's analysis on translational NCS is as follows: *The largest off-origin peak in the Patterson function is 5.16% of the height of the origin peak. No significant pseudotranslation is detected.*

¹Intensities estimated from amplitudes.

²Theoretical values of $\langle |L| \rangle$, $\langle L^2 \rangle$ for acentric reflections are 0.5, 0.333 respectively for untwinned datasets, and 0.375, 0.2 for perfectly twinned datasets.

5 Model quality [i](#)

5.1 Standard geometry [i](#)

Bond lengths and bond angles in the following residue types are not validated in this section: FMT, MN, 5GP, IBM, MG

The Z score for a bond length (or angle) is the number of standard deviations the observed value is removed from the expected value. A bond length (or angle) with $|Z| > 5$ is considered an outlier worth inspection. RMSZ is the root-mean-square of all Z scores of the bond lengths (or angles).

Mol	Chain	Bond lengths		Bond angles	
		RMSZ	# $ Z > 5$	RMSZ	# $ Z > 5$
1	A	0.76	4/2776 (0.1%)	0.71	4/3759 (0.1%)
1	B	0.74	2/2776 (0.1%)	0.72	1/3759 (0.0%)
All	All	0.75	6/5552 (0.1%)	0.71	5/7518 (0.1%)

All (6) bond length outliers are listed below:

Mol	Chain	Res	Type	Atoms	Z	Observed(Å)	Ideal(Å)
1	A	326	CYS	CB-SG	-8.12	1.68	1.82
1	B	370	GLU	CG-CD	6.64	1.61	1.51
1	A	259	CYS	CB-SG	-5.90	1.72	1.81
1	A	411	GLU	CG-CD	5.73	1.60	1.51
1	A	370	GLU	CG-CD	5.71	1.60	1.51
1	B	257	CYS	CB-SG	-5.47	1.72	1.81

All (5) bond angle outliers are listed below:

Mol	Chain	Res	Type	Atoms	Z	Observed(°)	Ideal(°)
1	B	236	ARG	NE-CZ-NH2	-7.88	116.36	120.30
1	A	429	ASP	CB-CG-OD2	-5.87	113.02	118.30
1	A	255	ARG	NE-CZ-NH1	5.39	122.99	120.30
1	A	236	ARG	NE-CZ-NH2	-5.35	117.62	120.30
1	A	429	ASP	CB-CG-OD1	5.17	122.95	118.30

There are no chirality outliers.

There are no planarity outliers.

5.2 Too-close contacts

In the following table, the Non-H and H(model) columns list the number of non-hydrogen atoms and hydrogen atoms in the chain respectively. The H(added) column lists the number of hydrogen atoms added and optimized by MolProbity. The Clashes column lists the number of clashes within the asymmetric unit, whereas Symm-Clashes lists symmetry-related clashes.

Mol	Chain	Non-H	H(model)	H(added)	Clashes	Symm-Clashes
1	A	2706	0	2643	25	0
1	B	2706	0	2643	16	0
2	A	1	0	0	0	0
2	B	1	0	0	0	0
3	A	1	0	0	0	0
3	B	1	0	0	0	0
4	A	24	0	12	4	0
5	B	16	0	14	0	0
6	B	3	0	1	0	0
7	A	241	0	0	4	0
7	B	237	0	0	4	0
All	All	5937	0	5313	42	0

The all-atom clashscore is defined as the number of clashes found per 1000 atoms (including hydrogen atoms). The all-atom clashscore for this structure is 4.

All (42) close contacts within the same asymmetric unit are listed below, sorted by their clash magnitude.

Atom-1	Atom-2	Interatomic distance (Å)	Clash overlap (Å)
1:A:500:MET:HG3	7:A:1134:HOH:O	1.70	0.91
1:A:424:TYR:HH	4:A:900:5GP:HO2'	1.36	0.69
1:A:424:TYR:OH	4:A:900:5GP:O2'	2.11	0.69
1:A:432:LYS:HG3	1:A:438:VAL:HG21	1.76	0.68
1:A:300:ASN:ND2	1:A:427:GLN:HE22	1.93	0.67
1:A:375:PHE:CE1	1:A:379:MET:HE1	2.35	0.62
1:A:474:MET:HE2	7:A:1043:HOH:O	2.01	0.59
1:A:300:ASN:C	1:A:300:ASN:HD22	2.08	0.56
1:B:277:PHE:CE1	1:B:390:MET:CE	2.89	0.56
1:B:277:PHE:CE1	1:B:390:MET:HE1	2.41	0.56
1:A:429:ASP:OD2	1:A:444:ARG:NH1	2.43	0.52
1:B:375:PHE:CE1	1:B:379:MET:HE1	2.44	0.52
1:A:403:ILE:HD11	1:A:464:MET:CE	2.40	0.52
1:A:386:ASN:HD22	1:A:386:ASN:C	2.13	0.51
1:A:403:ILE:HD11	1:A:464:MET:HE1	1.93	0.50
1:A:467:THR:HG22	7:A:1107:HOH:O	2.11	0.50

Continued on next page...

Continued from previous page...

Atom-1	Atom-2	Interatomic distance (Å)	Clash overlap (Å)
1:A:300:ASN:HD21	1:A:427:GLN:HE22	1.60	0.50
1:B:246:TYR:CZ	1:B:257:CYS:HB2	2.48	0.49
1:B:375:PHE:CZ	1:B:379:MET:CE	2.96	0.49
1:B:200:THR:HG22	7:B:1056:HOH:O	2.11	0.49
1:A:400:CYS:O	1:A:404:SER:HB3	2.12	0.48
1:B:389:HIS:HE1	7:B:1248:HOH:O	1.96	0.48
1:A:379:MET:HE2	1:A:379:MET:CA	2.44	0.47
1:A:375:PHE:CE1	1:A:379:MET:CE	2.97	0.46
1:A:350:LYS:HE3	7:B:1218:HOH:O	2.15	0.46
1:B:375:PHE:CZ	1:B:379:MET:HE1	2.52	0.45
1:B:383:ASP:H	1:B:389:HIS:HD2	1.64	0.45
1:B:249:ASN:HB3	1:B:423:GLU:OE1	2.17	0.45
1:A:184:PRO:HB3	1:A:186:TYR:CE2	2.53	0.44
1:B:231:ASN:HB2	7:B:1254:HOH:O	2.18	0.43
1:A:249:ASN:HB3	1:A:423:GLU:OE1	2.19	0.42
4:A:900:5GP:H8	7:A:914:HOH:O	2.18	0.42
1:B:375:PHE:CE1	1:B:379:MET:CE	3.03	0.42
1:A:500:MET:O	1:A:504:GLN:HG3	2.20	0.42
1:B:315:TYR:CE1	1:B:323:ASN:HB3	2.55	0.42
1:B:432:LYS:HG3	1:B:438:VAL:HG21	2.01	0.42
1:A:493:LEU:O	1:A:496:ILE:HG22	2.20	0.41
1:A:252:HIS:NE2	4:A:900:5GP:O1P	2.53	0.41
1:A:184:PRO:CB	1:A:186:TYR:CZ	3.04	0.41
1:B:304:GLN:NE2	1:B:309:THR:OG1	2.53	0.41
1:A:396:ILE:HD13	1:A:396:ILE:HA	1.88	0.41
1:B:379:MET:HE2	1:B:379:MET:CA	2.52	0.40

There are no symmetry-related clashes.

5.3 Torsion angles [i](#)

5.3.1 Protein backbone [i](#)

In the following table, the Percentiles column shows the percent Ramachandran outliers of the chain as a percentile score with respect to all X-ray entries followed by that with respect to entries of similar resolution.

The Analysed column shows the number of residues for which the backbone conformation was analysed, and the total number of residues.

Mol	Chain	Analysed	Favoured	Allowed	Outliers	Percentiles	
1	A	326/329 (99%)	323 (99%)	3 (1%)	0	100	100
1	B	326/329 (99%)	322 (99%)	4 (1%)	0	100	100
All	All	652/658 (99%)	645 (99%)	7 (1%)	0	100	100

There are no Ramachandran outliers to report.

5.3.2 Protein sidechains [i](#)

In the following table, the Percentiles column shows the percent sidechain outliers of the chain as a percentile score with respect to all X-ray entries followed by that with respect to entries of similar resolution.

The Analysed column shows the number of residues for which the sidechain conformation was analysed, and the total number of residues.

Mol	Chain	Analysed	Rotameric	Outliers	Percentiles	
1	A	304/305 (100%)	296 (97%)	8 (3%)	46	47
1	B	304/305 (100%)	298 (98%)	6 (2%)	55	59
All	All	608/610 (100%)	594 (98%)	14 (2%)	50	53

All (14) residues with a non-rotameric sidechain are listed below:

Mol	Chain	Res	Type
1	A	257	CYS
1	A	300	ASN
1	A	370	GLU
1	A	386	ASN
1	A	471	LEU
1	A	480	LEU
1	A	504	GLN
1	A	505	LYS
1	B	200	THR
1	B	257	CYS
1	B	474	MET
1	B	481	GLN
1	B	493	LEU
1	B	505	LYS

Sometimes sidechains can be flipped to improve hydrogen bonding and reduce clashes. All (8) such sidechains are listed below:

Mol	Chain	Res	Type
1	A	300	ASN
1	A	304	GLN
1	A	351	GLN
1	A	386	ASN
1	A	389	HIS
1	B	304	GLN
1	B	351	GLN
1	B	389	HIS

5.3.3 RNA [i](#)

There are no RNA molecules in this entry.

5.4 Non-standard residues in protein, DNA, RNA chains [i](#)

There are no non-standard protein/DNA/RNA residues in this entry.

5.5 Carbohydrates [i](#)

There are no monosaccharides in this entry.

5.6 Ligand geometry [i](#)

Of 7 ligands modelled in this entry, 4 are monoatomic - leaving 3 for Mogul analysis.

In the following table, the Counts columns list the number of bonds (or angles) for which Mogul statistics could be retrieved, the number of bonds (or angles) that are observed in the model and the number of bonds (or angles) that are defined in the Chemical Component Dictionary. The Link column lists molecule types, if any, to which the group is linked. The Z score for a bond length (or angle) is the number of standard deviations the observed value is removed from the expected value. A bond length (or angle) with $|Z| > 2$ is considered an outlier worth inspection. RMSZ is the root-mean-square of all Z scores of the bond lengths (or angles).

Mol	Type	Chain	Res	Link	Bond lengths			Bond angles		
					Counts	RMSZ	$\# Z > 2$	Counts	RMSZ	$\# Z > 2$
6	FMT	B	1	2	2,2,2	0.88	0	1,1,1	0.20	0
5	IBM	B	900	-	8,17,17	1.08	1 (12%)	10,25,25	1.31	0
4	5GP	A	900	3	22,26,26	1.32	2 (9%)	26,40,40	1.59	7 (26%)

In the following table, the Chirals column lists the number of chiral outliers, the number of chiral centers analysed, the number of these observed in the model and the number defined in the

Chemical Component Dictionary. Similar counts are reported in the Torsion and Rings columns. '-' means no outliers of that kind were identified.

Mol	Type	Chain	Res	Link	Chirals	Torsions	Rings
5	IBM	B	900	-	-	3/4/4/4	0/2/2/2
4	5GP	A	900	3	-	5/6/26/26	0/3/3/3

All (3) bond length outliers are listed below:

Mol	Chain	Res	Type	Atoms	Z	Observed(Å)	Ideal(Å)
4	A	900	5GP	C5-C6	-4.58	1.38	1.47
4	A	900	5GP	C5-C4	2.36	1.49	1.43
5	B	900	IBM	C6-N1	-2.18	1.35	1.38

All (7) bond angle outliers are listed below:

Mol	Chain	Res	Type	Atoms	Z	Observed(°)	Ideal(°)
4	A	900	5GP	N2-C2-N1	2.85	122.78	116.71
4	A	900	5GP	O6-C6-C5	-2.83	118.84	124.37
4	A	900	5GP	N2-C2-N3	-2.41	115.05	119.74
4	A	900	5GP	O2P-P-O5'	-2.26	100.71	106.73
4	A	900	5GP	C5-C6-N1	2.26	117.94	113.95
4	A	900	5GP	O6-C6-N1	2.16	123.20	120.65
4	A	900	5GP	O5'-P-O1P	-2.05	100.73	106.47

There are no chirality outliers.

All (8) torsion outliers are listed below:

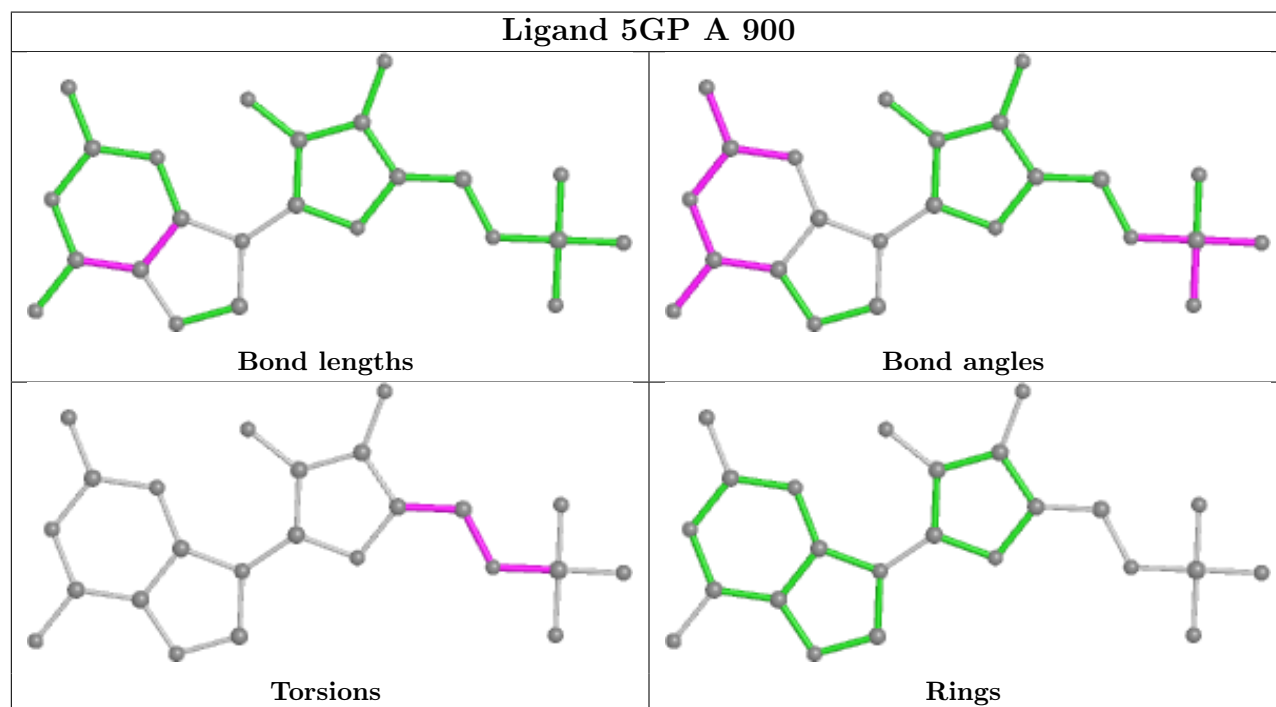
Mol	Chain	Res	Type	Atoms
4	A	900	5GP	C5'-O5'-P-O1P
4	A	900	5GP	C5'-O5'-P-O2P
4	A	900	5GP	C5'-O5'-P-O3P
5	B	900	IBM	C12-C11-N3-C4
5	B	900	IBM	N3-C11-C12-C13
5	B	900	IBM	N3-C11-C12-C14
4	A	900	5GP	C4'-C5'-O5'-P
4	A	900	5GP	O4'-C4'-C5'-O5'

There are no ring outliers.

1 monomer is involved in 4 short contacts:

Mol	Chain	Res	Type	Clashes	Symm-Clashes
4	A	900	5GP	4	0

The following is a two-dimensional graphical depiction of Mogul quality analysis of bond lengths, bond angles, torsion angles, and ring geometry for all instances of the Ligand of Interest. In addition, ligands with molecular weight > 250 and outliers as shown on the validation Tables will also be included. For torsion angles, if less than 5% of the Mogul distribution of torsion angles is within 10 degrees of the torsion angle in question, then that torsion angle is considered an outlier. Any bond that is central to one or more torsion angles identified as an outlier by Mogul will be highlighted in the graph. For rings, the root-mean-square deviation (RMSD) between the ring in question and similar rings identified by Mogul is calculated over all ring torsion angles. If the average RMSD is greater than 60 degrees and the minimal RMSD between the ring in question and any Mogul-identified rings is also greater than 60 degrees, then that ring is considered an outlier. The outliers are highlighted in purple. The color gray indicates Mogul did not find sufficient equivalents in the CSD to analyse the geometry.



5.7 Other polymers [i](#)

There are no such residues in this entry.

5.8 Polymer linkage issues [i](#)

There are no chain breaks in this entry.

6 Fit of model and data

6.1 Protein, DNA and RNA chains

In the following table, the column labelled ‘#RSRZ > 2’ contains the number (and percentage) of RSRZ outliers, followed by percent RSRZ outliers for the chain as percentile scores relative to all X-ray entries and entries of similar resolution. The OWAB column contains the minimum, median, 95th percentile and maximum values of the occupancy-weighted average B-factor per residue. The column labelled ‘Q < 0.9’ lists the number of (and percentage) of residues with an average occupancy less than 0.9.

Mol	Chain	Analysed	<RSRZ>	#RSRZ>2	OWAB(Å ²)	Q<0.9
1	A	328/329 (99%)	0.06	14 (4%) 35 45	31, 39, 50, 59	0
1	B	328/329 (99%)	-0.01	19 (5%) 23 31	32, 39, 49, 63	0
All	All	656/658 (99%)	0.02	33 (5%) 28 37	31, 39, 49, 63	0

All (33) RSRZ outliers are listed below:

Mol	Chain	Res	Type	RSRZ
1	B	505	LYS	8.8
1	A	178	GLY	7.2
1	B	178	GLY	6.7
1	B	502	GLU	4.3
1	B	504	GLN	4.2
1	A	179	SER	4.1
1	B	380	GLU	3.8
1	A	445	ASP	3.7
1	A	504	GLN	3.5
1	B	381	ASN	3.4
1	B	179	SER	3.1
1	B	501	LYS	3.1
1	A	380	GLU	3.0
1	A	387	GLU	2.8
1	A	505	LYS	2.8
1	B	354	GLN	2.8
1	B	477	GLU	2.8
1	A	248	ASN	2.6
1	B	248	ASN	2.6
1	B	387	GLU	2.6
1	B	503	LEU	2.6
1	B	194	GLU	2.5
1	A	180	HIS	2.5
1	B	385	SER	2.4

Continued on next page...

Continued from previous page...

Mol	Chain	Res	Type	RSRZ
1	B	495	ARG	2.4
1	A	414	GLU	2.3
1	B	373	ASP	2.2
1	B	185	LYS	2.2
1	B	414	GLU	2.1
1	A	354	GLN	2.1
1	A	182	THR	2.1
1	A	503	LEU	2.0
1	A	501	LYS	2.0

6.2 Non-standard residues in protein, DNA, RNA chains [\(i\)](#)

There are no non-standard protein/DNA/RNA residues in this entry.

6.3 Carbohydrates [\(i\)](#)

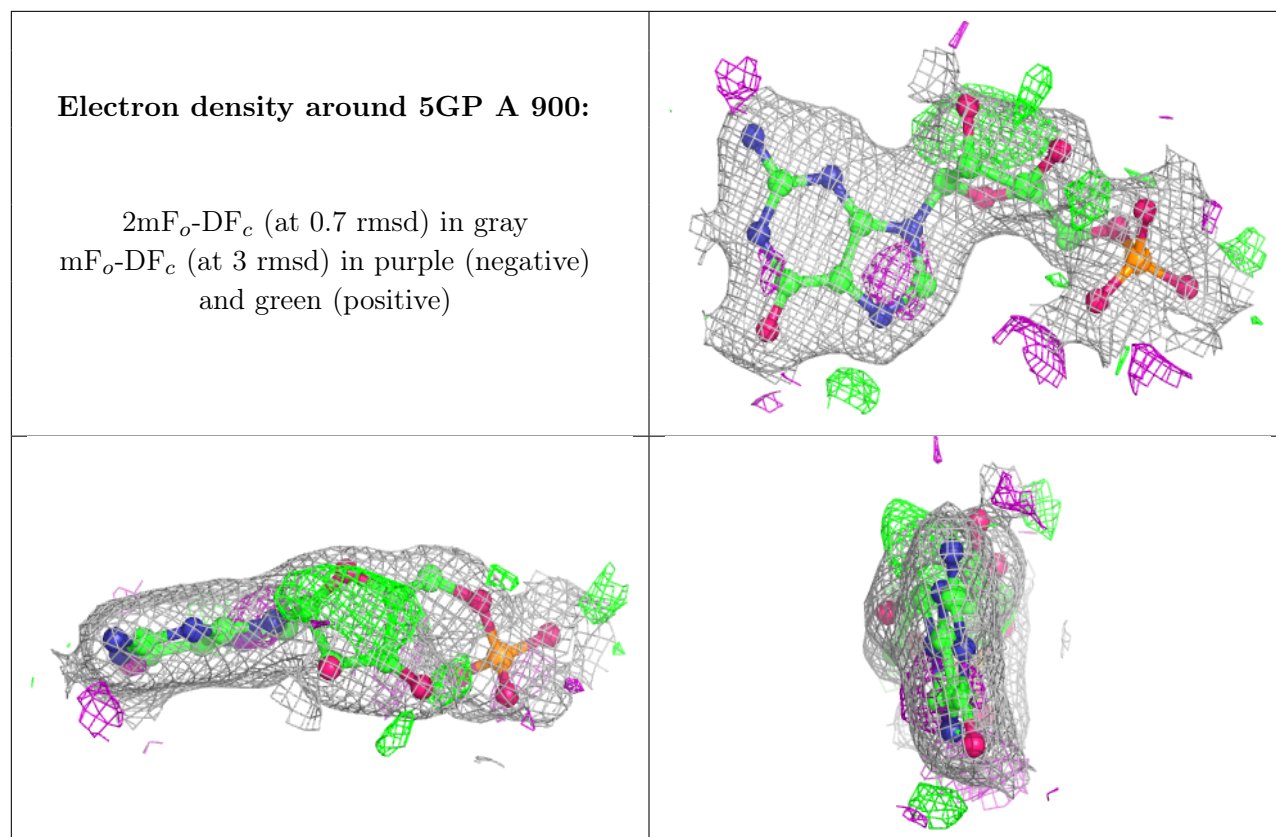
There are no monosaccharides in this entry.

6.4 Ligands [\(i\)](#)

In the following table, the Atoms column lists the number of modelled atoms in the group and the number defined in the chemical component dictionary. The B-factors column lists the minimum, median, 95th percentile and maximum values of B factors of atoms in the group. The column labelled 'Q< 0.9' lists the number of atoms with occupancy less than 0.9.

Mol	Type	Chain	Res	Atoms	RSCC	RSR	B-factors(Å ²)	Q<0.9
3	MG	A	902	1/1	0.92	0.09	39,39,39,39	0
4	5GP	A	900	24/24	0.94	0.12	42,45,50,52	12
5	IBM	B	900	16/16	0.97	0.10	39,42,51,52	0
6	FMT	B	1	3/3	0.97	0.21	37,37,37,38	0
3	MG	B	902	1/1	0.98	0.03	39,39,39,39	0
2	MN	B	901	1/1	0.99	0.03	36,36,36,36	0
2	MN	A	901	1/1	0.99	0.03	36,36,36,36	0

The following is a graphical depiction of the model fit to experimental electron density of all instances of the Ligand of Interest. In addition, ligands with molecular weight > 250 and outliers as shown on the geometry validation Tables will also be included. Each fit is shown from different orientation to approximate a three-dimensional view.



6.5 Other polymers [i](#)

There are no such residues in this entry.