



Full wwPDB X-ray Structure Validation Report ⓘ

May 14, 2020 – 06:54 pm BST

PDB ID : 4E04
Title : RpBphP2 chromophore-binding domain crystallized by homologue-directed mutagenesis.
Authors : Bellini, D.; Papiz, M.Z.
Deposited on : 2012-03-02
Resolution : 1.79 Å(reported)

This is a Full wwPDB X-ray Structure Validation Report for a publicly released PDB entry.

We welcome your comments at validation@mail.wwpdb.org

A user guide is available at

<https://www.wwpdb.org/validation/2017/XrayValidationReportHelp>

with specific help available everywhere you see the ⓘ symbol.

The following versions of software and data (see [references ⓘ](#)) were used in the production of this report:

MolProbity : 4.02b-467
Mogul : 1.8.5 (274361), CSD as541be (2020)
Xtriage (Phenix) : 1.13
EDS : 2.11
buster-report : 1.1.7 (2018)
Percentile statistics : 20191225.v01 (using entries in the PDB archive December 25th 2019)
Refmac : 5.8.0158
CCP4 : 7.0.044 (Gargrove)
Ideal geometry (proteins) : Engh & Huber (2001)
Ideal geometry (DNA, RNA) : Parkinson et al. (1996)
Validation Pipeline (wwPDB-VP) : 2.11

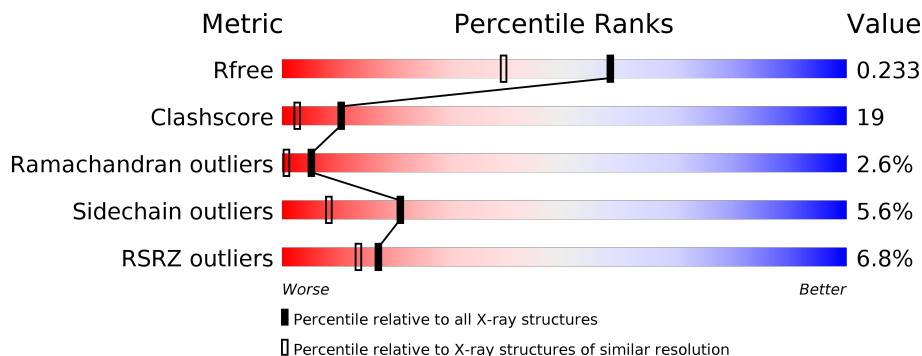
1 Overall quality at a glance

The following experimental techniques were used to determine the structure:

X-RAY DIFFRACTION

The reported resolution of this entry is 1.79 Å.

Percentile scores (ranging between 0-100) for global validation metrics of the entry are shown in the following graphic. The table shows the number of entries on which the scores are based.



Metric	Whole archive (#Entries)	Similar resolution (#Entries, resolution range(Å))
R_{free}	130704	5950 (1.80-1.80)
Clashscore	141614	6793 (1.80-1.80)
Ramachandran outliers	138981	6697 (1.80-1.80)
Sidechain outliers	138945	6696 (1.80-1.80)
RSRZ outliers	127900	5850 (1.80-1.80)

The table below summarises the geometric issues observed across the polymeric chains and their fit to the electron density. The red, orange, yellow and green segments on the lower bar indicate the fraction of residues that contain outliers for ≥ 3 , 2, 1 and 0 types of geometric quality criteria respectively. A grey segment represents the fraction of residues that are not modelled. The numeric value for each fraction is indicated below the corresponding segment, with a dot representing fractions $\leq 5\%$. The upper red bar (where present) indicates the fraction of residues that have poor fit to the electron density. The numeric value is given above the bar.

Mol	Chain	Length	Quality of chain
1	A	327	 5% 67% 23% 6%
1	B	327	 8% 71% 17% 7% 5%

2 Entry composition i

There are 3 unique types of molecules in this entry. The entry contains 5439 atoms, of which 0 are hydrogens and 0 are deuteriums.

In the tables below, the ZeroOcc column contains the number of atoms modelled with zero occupancy, the AltConf column contains the number of residues with at least one atom in alternate conformation and the Trace column contains the number of residues modelled with at most 2 atoms.

- Molecule 1 is a protein called Bacteriophytochrome (Light-regulated signal transduction histidine kinase), PhyB1.

Mol	Chain	Residues	Atoms					ZeroOcc	AltConf	Trace
			Total	C	N	O	S			
1	A	308	2423	1529	441	441	12	0	5	0
1	B	310	2415	1524	435	444	12	0	2	0

There are 48 discrepancies between the modelled and reference sequences:

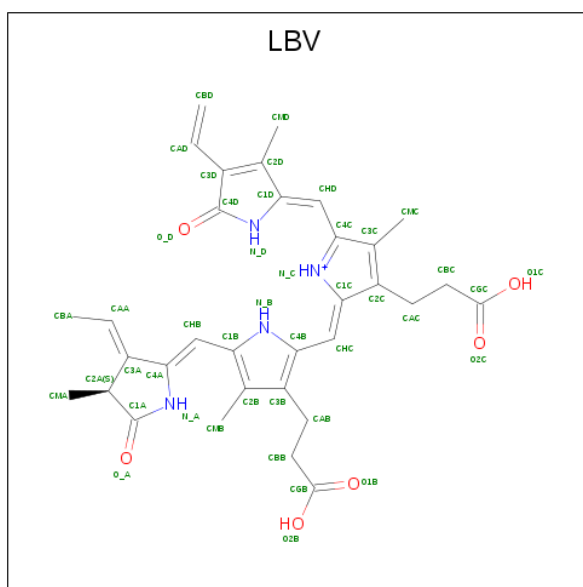
Chain	Residue	Modelled	Actual	Comment	Reference
A	98	PRO	ARG	ENGINEERED MUTATION	UNP Q6N5G3
A	99	ASP	LYS	ENGINEERED MUTATION	UNP Q6N5G3
A	100	GLY	ASP	ENGINEERED MUTATION	UNP Q6N5G3
A	101	GLU	ALA	ENGINEERED MUTATION	UNP Q6N5G3
A	102	ARG	GLY	ENGINEERED MUTATION	UNP Q6N5G3
A	103	ALA	PHE	ENGINEERED MUTATION	UNP Q6N5G3
A	104	PHE	VAL	ENGINEERED MUTATION	UNP Q6N5G3
A	105	ASN	-	INSERTION	UNP Q6N5G3
A	127	ARG	ALA	ENGINEERED MUTATION	UNP Q6N5G3
A	128	TYR	GLU	ENGINEERED MUTATION	UNP Q6N5G3
A	135	SER	ARG	ENGINEERED MUTATION	UNP Q6N5G3
A	136	VAL	THR	ENGINEERED MUTATION	UNP Q6N5G3
A	137	ARG	ASN	ENGINEERED MUTATION	UNP Q6N5G3
A	237	ARG	VAL	ENGINEERED MUTATION	UNP Q6N5G3
A	296	GLU	ASP	ENGINEERED MUTATION	UNP Q6N5G3
A	297	VAL	GLY	ENGINEERED MUTATION	UNP Q6N5G3
A	320	LEU	-	EXPRESSION TAG	UNP Q6N5G3
A	321	GLU	-	EXPRESSION TAG	UNP Q6N5G3
A	322	HIS	-	EXPRESSION TAG	UNP Q6N5G3
A	323	HIS	-	EXPRESSION TAG	UNP Q6N5G3
A	324	HIS	-	EXPRESSION TAG	UNP Q6N5G3
A	325	HIS	-	EXPRESSION TAG	UNP Q6N5G3
A	326	HIS	-	EXPRESSION TAG	UNP Q6N5G3
A	327	HIS	-	EXPRESSION TAG	UNP Q6N5G3

Continued on next page...

Continued from previous page...

Chain	Residue	Modelled	Actual	Comment	Reference
B	98	PRO	ARG	ENGINEERED MUTATION	UNP Q6N5G3
B	99	ASP	LYS	ENGINEERED MUTATION	UNP Q6N5G3
B	100	GLY	ASP	ENGINEERED MUTATION	UNP Q6N5G3
B	101	GLU	ALA	ENGINEERED MUTATION	UNP Q6N5G3
B	102	ARG	GLY	ENGINEERED MUTATION	UNP Q6N5G3
B	103	ALA	PHE	ENGINEERED MUTATION	UNP Q6N5G3
B	104	PHE	VAL	ENGINEERED MUTATION	UNP Q6N5G3
B	105	ASN	-	INSERTION	UNP Q6N5G3
B	127	ARG	ALA	ENGINEERED MUTATION	UNP Q6N5G3
B	128	TYR	GLU	ENGINEERED MUTATION	UNP Q6N5G3
B	135	SER	ARG	ENGINEERED MUTATION	UNP Q6N5G3
B	136	VAL	THR	ENGINEERED MUTATION	UNP Q6N5G3
B	137	ARG	ASN	ENGINEERED MUTATION	UNP Q6N5G3
B	237	ARG	VAL	ENGINEERED MUTATION	UNP Q6N5G3
B	296	GLU	ASP	ENGINEERED MUTATION	UNP Q6N5G3
B	297	VAL	GLY	ENGINEERED MUTATION	UNP Q6N5G3
B	320	LEU	-	EXPRESSION TAG	UNP Q6N5G3
B	321	GLU	-	EXPRESSION TAG	UNP Q6N5G3
B	322	HIS	-	EXPRESSION TAG	UNP Q6N5G3
B	323	HIS	-	EXPRESSION TAG	UNP Q6N5G3
B	324	HIS	-	EXPRESSION TAG	UNP Q6N5G3
B	325	HIS	-	EXPRESSION TAG	UNP Q6N5G3
B	326	HIS	-	EXPRESSION TAG	UNP Q6N5G3
B	327	HIS	-	EXPRESSION TAG	UNP Q6N5G3

- Molecule 2 is 3-[2-[(Z)-[3-(2-carboxyethyl)-5-[(Z)-(4-ethenyl-3-methyl-5-oxidanylidene-pyrro-1-2-ylidene)methyl]-4-methyl-pyrrol-1-ium-2-ylidene]methyl]-5-[(Z)-[(3E)-3-ethylidene-4-methyl-5-oxidanylidene-pyrrolidin-2-ylidene]methyl]-4-methyl-1H-pyrrol-3-yl]propanoic acid (three-letter code: LBV) (formula: C₃₃H₃₇N₄O₆).



Mol	Chain	Residues	Atoms				ZeroOcc	AltConf
2	A	1	Total	C	N	O	0	0
			43	33	4	6		
2	B	1	Total	C	N	O	0	0
			43	33	4	6		

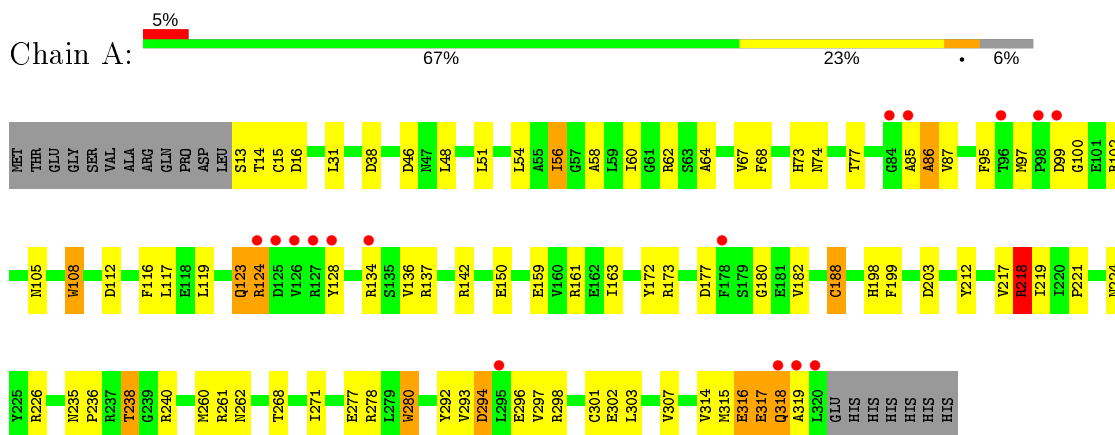
- Molecule 3 is water.

Mol	Chain	Residues	Atoms		ZeroOcc	AltConf
3	A	277	Total	O	0	0
			277	277		
3	B	238	Total	O	0	0
			238	238		

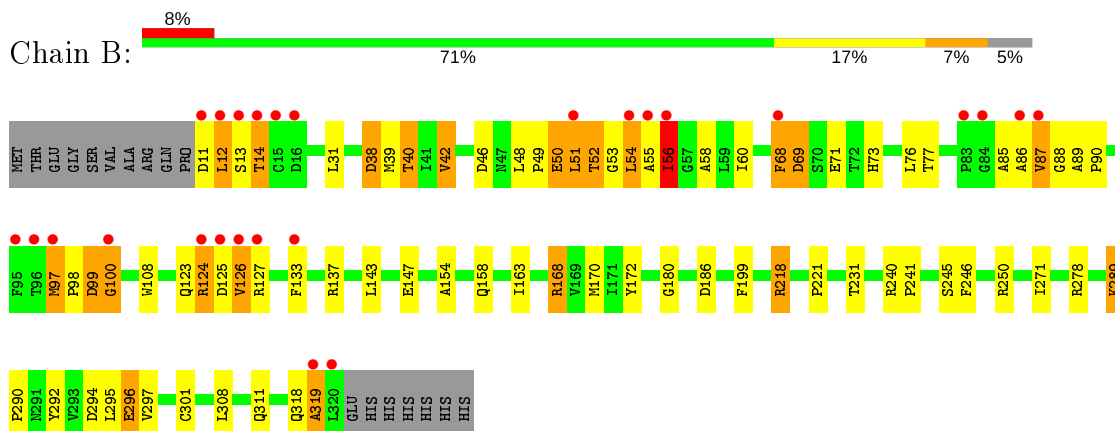
3 Residue-property plots [i](#)

These plots are drawn for all protein, RNA and DNA chains in the entry. The first graphic for a chain summarises the proportions of the various outlier classes displayed in the second graphic. The second graphic shows the sequence view annotated by issues in geometry and electron density. Residues are color-coded according to the number of geometric quality criteria for which they contain at least one outlier: green = 0, yellow = 1, orange = 2 and red = 3 or more. A red dot above a residue indicates a poor fit to the electron density ($RSRZ > 2$). Stretches of 2 or more consecutive residues without any outlier are shown as a green connector. Residues present in the sample, but not in the model, are shown in grey.

- Molecule 1: Bacteriophytochrome (Light-regulated signal transduction histidine kinase), PhyB1



- Molecule 1: Bacteriophytochrome (Light-regulated signal transduction histidine kinase), PhyB1



4 Data and refinement statistics

Property	Value	Source
Space group	P 21 21 21	Depositor
Cell constants a, b, c, α , β , γ	52.35Å 79.86Å 149.88Å 90.00° 90.00° 90.00°	Depositor
Resolution (Å)	15.00 – 1.79 74.94 – 1.79	Depositor EDS
% Data completeness (in resolution range)	99.7 (15.00-1.79) 99.7 (74.94-1.79)	Depositor EDS
R_{merge}	(Not available)	Depositor
R_{sym}	0.02	Depositor
$\langle I/\sigma(I) \rangle$ ¹	2.10 (at 1.80Å)	Xtrriage
Refinement program	REFMAC 5.5.0109	Depositor
R, R_{free}	0.181 , 0.232 0.183 , 0.233	Depositor DCC
R_{free} test set	3027 reflections (5.06%)	wwPDB-VP
Wilson B-factor (Å ²)	36.5	Xtrriage
Anisotropy	0.178	Xtrriage
Bulk solvent k_{sol} (e/Å ³), B_{sol} (Å ²)	0.35 , 52.9	EDS
L-test for twinning ²	$\langle L \rangle = 0.46$, $\langle L^2 \rangle = 0.29$	Xtrriage
Estimated twinning fraction	No twinning to report.	Xtrriage
F_o, F_c correlation	0.97	EDS
Total number of atoms	5439	wwPDB-VP
Average B, all atoms (Å ²)	50.0	wwPDB-VP

Xtrriage's analysis on translational NCS is as follows: *The largest off-origin peak in the Patterson function is 4.12% of the height of the origin peak. No significant pseudotranslation is detected.*

¹Intensities estimated from amplitudes.

²Theoretical values of $\langle |L| \rangle$, $\langle L^2 \rangle$ for acentric reflections are 0.5, 0.333 respectively for untwinned datasets, and 0.375, 0.2 for perfectly twinned datasets.

5 Model quality [i](#)

5.1 Standard geometry [i](#)

Bond lengths and bond angles in the following residue types are not validated in this section: LBV

The Z score for a bond length (or angle) is the number of standard deviations the observed value is removed from the expected value. A bond length (or angle) with $|Z| > 5$ is considered an outlier worth inspection. RMSZ is the root-mean-square of all Z scores of the bond lengths (or angles).

Mol	Chain	Bond lengths		Bond angles	
		RMSZ	# Z >5	RMSZ	# Z >5
1	A	1.00	3/2492 (0.1%)	1.07	6/3391 (0.2%)
1	B	0.97	1/2475 (0.0%)	1.24	10/3371 (0.3%)
All	All	0.98	4/4967 (0.1%)	1.16	16/6762 (0.2%)

Chiral center outliers are detected by calculating the chiral volume of a chiral center and verifying if the center is modelled as a planar moiety or with the opposite hand. A planarity outlier is detected by checking planarity of atoms in a peptide group, atoms in a mainchain group or atoms of a sidechain that are expected to be planar.

Mol	Chain	#Chirality outliers	#Planarity outliers
1	A	0	2

All (4) bond length outliers are listed below:

Mol	Chain	Res	Type	Atoms	Z	Observed(Å)	Ideal(Å)
1	A	280	TRP	CD2-CE2	6.11	1.48	1.41
1	B	245	SER	CB-OG	5.57	1.49	1.42
1	A	292	TYR	CE1-CZ	5.57	1.45	1.38
1	A	108	TRP	CD2-CE2	5.25	1.47	1.41

All (16) bond angle outliers are listed below:

Mol	Chain	Res	Type	Atoms	Z	Observed(°)	Ideal(°)
1	B	218	ARG	NE-CZ-NH1	-27.80	106.40	120.30
1	B	218	ARG	NE-CZ-NH2	24.53	132.57	120.30
1	A	218	ARG	NE-CZ-NH1	14.00	127.30	120.30
1	B	168	ARG	NE-CZ-NH1	13.44	127.02	120.30
1	B	168	ARG	NE-CZ-NH2	-11.42	114.59	120.30
1	A	46	ASP	CB-CG-OD1	7.36	124.92	118.30
1	A	218	ARG	NE-CZ-NH2	-6.94	116.83	120.30

Continued on next page...

Continued from previous page...

Mol	Chain	Res	Type	Atoms	Z	Observed(°)	Ideal(°)
1	B	218	ARG	CD-NE-CZ	6.84	133.18	123.60
1	A	46	ASP	CB-CG-OD2	-6.55	112.41	118.30
1	B	42	VAL	CG1-CB-CG2	6.16	120.76	110.90
1	A	177	ASP	CB-CG-OD1	5.71	123.44	118.30
1	B	38	ASP	CB-CG-OD1	5.64	123.37	118.30
1	B	69	ASP	CB-CG-OD1	-5.32	113.51	118.30
1	B	186	ASP	CB-CG-OD2	5.24	123.02	118.30
1	A	117	LEU	CB-CG-CD1	-5.10	102.33	111.00
1	B	250	ARG	NE-CZ-NH1	5.04	122.82	120.30

There are no chirality outliers.

All (2) planarity outliers are listed below:

Mol	Chain	Res	Type	Group
1	A	316	GLU	Peptide

5.2 Too-close contacts

In the following table, the Non-H and H(model) columns list the number of non-hydrogen atoms and hydrogen atoms in the chain respectively. The H(added) column lists the number of hydrogen atoms added and optimized by MolProbity. The Clashes column lists the number of clashes within the asymmetric unit, whereas Symm-Clashes lists symmetry related clashes.

Mol	Chain	Non-H	H(model)	H(added)	Clashes	Symm-Clashes
1	A	2423	0	2420	98	0
1	B	2415	0	2398	85	2
2	A	43	0	33	3	0
2	B	43	0	33	2	0
3	A	277	0	0	18	0
3	B	238	0	0	15	2
All	All	5439	0	4884	182	2

The all-atom clashscore is defined as the number of clashes found per 1000 atoms (including hydrogen atoms). The all-atom clashscore for this structure is 19.

All (182) close contacts within the same asymmetric unit are listed below, sorted by their clash magnitude.

Atom-1	Atom-2	Interatomic distance (Å)	Clash overlap (Å)
1:A:294:ASP:HB3	3:A:518:HOH:O	1.43	1.17

Continued on next page...

Continued from previous page...

Atom-1	Atom-2	Interatomic distance (Å)	Clash overlap (Å)
1:B:56:ILE:HG21	1:B:231:THR:HG23	1.31	1.07
1:A:318:GLN:HG3	1:A:319:ALA:H	1.18	1.07
1:B:123:GLN:HG3	1:B:124:ARG:H	1.24	1.01
1:B:231:THR:HB	3:B:519:HOH:O	0.82	0.99
1:B:97:MET:HB3	1:B:98:PRO:HD2	1.46	0.96
1:A:56:ILE:H	1:A:56:ILE:HD12	1.31	0.95
1:A:318:GLN:HG3	1:A:319:ALA:N	1.85	0.91
1:A:224:ASN:HD21	1:A:261:ARG:HE	1.18	0.89
1:A:319:ALA:HB2	3:B:584:HOH:O	1.73	0.89
1:A:316:GLU:O	1:A:317[B]:GLU:HB2	1.72	0.88
1:A:150:GLU:HG2	3:A:734:HOH:O	1.73	0.88
1:B:56:ILE:H	1:B:56:ILE:HD12	1.35	0.88
1:A:56:ILE:HG22	1:A:60:ILE:HD11	1.57	0.87
1:A:293:VAL:O	3:A:651:HOH:O	1.93	0.85
1:A:56:ILE:CG2	1:A:60:ILE:HD11	2.08	0.84
1:B:38:ASP:OD1	1:B:40:THR:HG23	1.81	0.80
1:B:99:ASP:HB2	1:B:100:GLY:CA	2.11	0.80
1:B:87:VAL:HA	3:B:573:HOH:O	1.79	0.80
1:B:168:ARG:HD3	1:B:170:MET:SD	2.23	0.78
1:A:15:CYS:HB2	3:A:698:HOH:O	1.83	0.78
1:B:55:ALA:H	1:B:58:ALA:HB3	1.50	0.77
1:A:219:ILE:HD11	1:A:298[B]:ARG:HG3	1.65	0.76
1:B:55:ALA:HB1	3:B:728:HOH:O	1.87	0.74
1:B:56:ILE:HD12	1:B:56:ILE:N	2.02	0.74
1:A:212:TYR:CE1	1:A:218:ARG:HD2	2.23	0.74
1:B:123:GLN:HG3	1:B:124:ARG:N	2.02	0.74
1:A:97:MET:HG3	1:A:100:GLY:O	1.88	0.74
1:B:56:ILE:HG21	1:B:231:THR:CG2	2.13	0.73
1:B:126:VAL:HA	1:B:127:ARG:HB2	1.71	0.72
1:B:73:HIS:O	1:B:77:THR:HG23	1.89	0.72
1:B:88:GLY:N	3:B:573:HOH:O	2.23	0.72
1:B:54:LEU:HD12	1:B:55:ALA:HB2	1.72	0.72
1:B:123:GLN:HB3	1:B:294:ASP:OD1	1.89	0.71
1:B:289:LYS:HB2	1:B:290:PRO:HD2	1.71	0.71
1:A:218:ARG:HD3	3:A:521:HOH:O	1.91	0.70
1:A:238:THR:HG23	1:A:240[A]:ARG:H	1.57	0.69
1:A:224:ASN:ND2	1:A:261:ARG:HE	1.89	0.69
1:A:217:VAL:HG21	1:A:302:GLU:CD	2.12	0.69
1:A:56:ILE:H	1:A:56:ILE:CD1	2.05	0.68
1:A:163:ILE:HG22	1:A:297:VAL:HG13	1.76	0.68
1:B:99:ASP:HB2	1:B:100:GLY:HA2	1.77	0.67

Continued on next page...

Continued from previous page...

Atom-1	Atom-2	Interatomic distance (Å)	Clash overlap (Å)
1:B:39:MET:CE	1:B:76:LEU:HD23	2.24	0.67
1:B:12:LEU:HD21	1:B:14:THR:HG22	1.78	0.66
1:B:289:LYS:HB2	1:B:290:PRO:CD	2.25	0.66
1:A:238:THR:HG23	1:A:240[B]:ARG:H	1.60	0.66
1:B:69:ASP:OD2	3:B:626:HOH:O	2.14	0.65
1:B:12:LEU:CD2	1:B:14:THR:HG22	2.27	0.65
1:B:97:MET:HB3	1:B:98:PRO:CD	2.25	0.65
1:A:14:THR:HG23	1:A:15:CYS:N	2.13	0.64
1:A:316:GLU:O	1:A:317[A]:GLU:HB2	1.92	0.64
1:A:73:HIS:O	1:A:77:THR:HG23	1.97	0.64
1:B:123:GLN:O	1:B:125:ASP:N	2.21	0.64
1:A:68:PHE:O	3:A:631:HOH:O	2.15	0.63
2:A:400:LBV:N_D	2:A:400:LBV:HMC1	2.13	0.63
1:A:128:TYR:OH	1:B:71:GLU:OE1	2.12	0.63
1:A:142:ARG:HD3	1:A:159:GLU:OE2	1.98	0.62
1:A:238:THR:CG2	1:A:240[A]:ARG:H	2.12	0.62
1:A:318:GLN:CG	1:A:319:ALA:H	1.95	0.62
1:A:315:MET:O	1:A:317[A]:GLU:HG3	1.99	0.61
1:A:235:ASN:HB3	1:A:238:THR:HG22	1.83	0.61
1:A:238:THR:CG2	1:A:240[B]:ARG:H	2.13	0.60
1:A:102:ARG:HG2	3:A:630:HOH:O	2.01	0.60
1:A:100:GLY:HA2	3:A:641:HOH:O	2.02	0.60
1:B:87:VAL:HG11	1:B:246:PHE:CD2	2.37	0.59
1:A:14:THR:HG23	1:A:15:CYS:H	1.68	0.58
1:B:296:GLU:HG2	1:B:297:VAL:N	2.17	0.57
1:B:39:MET:HE1	1:B:76:LEU:HD23	1.85	0.57
1:A:224:ASN:HD22	1:A:261:ARG:HH21	1.50	0.57
1:A:277:GLU:HG3	3:A:584:HOH:O	2.04	0.57
1:A:235:ASN:HB3	1:A:238:THR:CG2	2.35	0.57
1:A:260:MET:CE	1:A:268:THR:HG21	2.35	0.57
1:B:127:ARG:HD2	1:B:296:GLU:OE2	2.04	0.57
1:B:231:THR:CB	3:B:519:HOH:O	1.70	0.57
1:B:124:ARG:NH2	1:B:292:TYR:O	2.34	0.57
2:B:400:LBV:HMC1	2:B:400:LBV:N_D	2.18	0.56
1:B:87:VAL:O	1:B:87:VAL:CG1	2.53	0.56
1:A:105:ASN:ND2	3:A:671:HOH:O	2.38	0.56
1:A:31:LEU:HD11	1:A:119:LEU:HD12	1.88	0.56
1:A:13:SER:HA	1:A:16:ASP:HB2	1.87	0.55
1:A:64:ALA:HA	1:A:67:VAL:HG12	1.88	0.55
1:B:318:GLN:O	1:B:319:ALA:HB3	2.07	0.55
1:A:87:VAL:HG13	3:A:696:HOH:O	2.06	0.54

Continued on next page...

Continued from previous page...

Atom-1	Atom-2	Interatomic distance (Å)	Clash overlap (Å)
1:B:143:LEU:HD11	1:B:311[A]:GLN:HE22	1.71	0.54
1:A:238:THR:HG23	1:A:240[B]:ARG:HB2	1.88	0.54
1:B:99:ASP:HB2	1:B:100:GLY:HA3	1.87	0.54
1:B:318:GLN:HB2	3:B:661:HOH:O	2.07	0.53
1:A:13:SER:HA	1:A:16:ASP:OD2	2.09	0.53
1:A:212:TYR:CE1	1:A:218:ARG:CD	2.91	0.53
1:B:126:VAL:HA	1:B:127:ARG:CB	2.34	0.53
1:B:39:MET:HE1	1:B:68:PHE:HZ	1.73	0.53
1:B:318:GLN:O	1:B:319:ALA:CB	2.56	0.52
1:A:319:ALA:CB	3:B:584:HOH:O	2.43	0.52
1:B:124:ARG:NH2	3:B:623:HOH:O	2.42	0.52
1:B:154:ALA:O	1:B:158:GLN:HG3	2.09	0.52
1:A:136:VAL:HG11	1:A:303:LEU:HD23	1.92	0.52
1:A:123:GLN:HG3	1:A:123:GLN:O	2.10	0.52
1:B:55:ALA:H	1:B:58:ALA:CB	2.19	0.52
1:B:87:VAL:HG12	1:B:87:VAL:O	2.08	0.51
1:B:88:GLY:HA3	1:B:108:TRP:O	2.11	0.51
1:A:95:PHE:HB2	1:A:97:MET:CE	2.41	0.51
1:B:53:GLY:O	1:B:54:LEU:HB3	2.10	0.51
1:A:226:ARG:NH2	3:A:548:HOH:O	2.45	0.50
1:B:143:LEU:CD1	1:B:311[A]:GLN:HE22	2.25	0.50
1:B:168:ARG:CD	1:B:170:MET:SD	2.98	0.50
1:A:95:PHE:HB2	1:A:97:MET:HE2	1.92	0.50
1:B:240[B]:ARG:HB3	1:B:241:PRO:HD2	1.94	0.50
1:B:53:GLY:O	1:B:54:LEU:CB	2.60	0.49
1:A:296:GLU:HG3	1:B:133:PHE:CE2	2.47	0.49
1:B:271:ILE:CD1	1:B:301:CYS:HB3	2.42	0.49
1:B:221:PRO:O	1:B:290:PRO:HA	2.13	0.49
1:A:56:ILE:N	1:A:56:ILE:HD12	2.15	0.49
1:B:31:LEU:HD21	1:B:51:LEU:HB2	1.95	0.49
1:B:48:LEU:N	1:B:49:PRO:HD2	2.28	0.49
1:B:89:ALA:HB1	1:B:90:PRO:HD2	1.93	0.49
1:B:56:ILE:CD1	1:B:56:ILE:N	2.73	0.48
1:B:56:ILE:C	1:B:58:ALA:N	2.66	0.48
1:B:50:GLU:O	1:B:52:THR:N	2.46	0.48
1:A:137:ARG:HD2	3:A:713:HOH:O	2.12	0.48
1:A:108:TRP:HA	1:A:116:PHE:O	2.14	0.48
1:B:289:LYS:CB	1:B:290:PRO:CD	2.89	0.47
1:A:271:ILE:HD11	1:A:301:CYS:HB3	1.97	0.47
1:A:271:ILE:CD1	1:A:301:CYS:HB3	2.44	0.47
1:A:260:MET:HE2	1:A:268:THR:CG2	2.45	0.47

Continued on next page...

Continued from previous page...

Atom-1	Atom-2	Interatomic distance (Å)	Clash overlap (Å)
1:B:56:ILE:C	1:B:58:ALA:H	2.18	0.47
1:A:260:MET:CE	1:A:268:THR:CG2	2.93	0.47
1:A:56:ILE:HG23	1:A:60:ILE:HD11	1.94	0.47
1:B:39:MET:HE2	1:B:76:LEU:HD23	1.96	0.47
1:A:173[B]:ARG:HD3	1:A:280:TRP:CZ2	2.49	0.46
1:B:172:TYR:CZ	1:B:180:GLY:HA3	2.51	0.46
1:B:308:LEU:HA	1:B:311[A]:GLN:HE21	1.81	0.46
1:A:182:VAL:CG2	2:A:400:LBV:HBD2	2.45	0.46
1:A:87:VAL:CG1	3:A:696:HOH:O	2.63	0.46
1:A:38:ASP:OD1	1:A:38:ASP:C	2.54	0.46
1:A:307:VAL:CG2	3:B:554:HOH:O	2.64	0.45
1:A:14:THR:CG2	1:A:15:CYS:N	2.78	0.45
1:A:307:VAL:HG23	3:B:554:HOH:O	2.16	0.45
1:A:102:ARG:HB2	1:A:102:ARG:HH11	1.82	0.45
1:A:31:LEU:HB3	1:A:51:LEU:HD12	1.98	0.45
1:A:172:TYR:OH	1:A:199:PHE:HB2	2.17	0.45
1:A:303:LEU:HB2	1:B:137:ARG:HD3	1.99	0.44
1:A:48:LEU:HD12	1:A:56:ILE:HG13	2.00	0.44
1:A:58:ALA:O	1:A:62:ARG:HD2	2.17	0.44
1:A:219:ILE:HG22	1:A:221:PRO:HD3	2.00	0.44
1:A:180:GLY:O	1:A:198:HIS:HA	2.18	0.44
1:B:240[A]:ARG:HB3	1:B:241:PRO:HD2	1.99	0.44
1:A:172:TYR:CZ	1:A:180:GLY:HA3	2.53	0.44
1:A:97:MET:CG	1:A:100:GLY:O	2.64	0.43
1:B:12:LEU:HD21	1:B:14:THR:CG2	2.47	0.43
1:A:217:VAL:HG21	1:A:302:GLU:CG	2.48	0.43
1:A:14:THR:CG2	1:A:15:CYS:H	2.31	0.43
1:A:161:ARG:NH2	1:A:188:CYS:HB3	2.33	0.43
1:A:318:GLN:CG	1:A:319:ALA:N	2.60	0.43
1:B:11:ASP:HA	1:B:12:LEU:HA	1.76	0.43
1:B:271:ILE:HD13	1:B:301:CYS:HB3	2.01	0.43
1:B:56:ILE:O	1:B:60:ILE:HG12	2.19	0.43
1:A:217:VAL:HG21	1:A:302:GLU:OE1	2.17	0.42
1:B:147:GLU:HB3	3:B:584:HOH:O	2.19	0.42
1:B:87:VAL:CA	3:B:573:HOH:O	2.54	0.42
1:A:314:VAL:O	1:A:317[A]:GLU:HA	2.19	0.42
1:A:203:ASP:HB3	2:A:400:LBV:HMD3	2.01	0.42
1:A:260:MET:HE2	1:A:268:THR:HG21	2.02	0.42
1:A:86:ALA:HB3	3:A:617:HOH:O	2.20	0.42
1:A:224:ASN:ND2	1:A:261:ARG:HH21	2.16	0.42
1:B:240[B]:ARG:HB3	1:B:241:PRO:CD	2.50	0.42

Continued on next page...

Continued from previous page...

Atom-1	Atom-2	Interatomic distance (Å)	Clash overlap (Å)
1:B:126:VAL:CA	1:B:127:ARG:HB2	2.46	0.42
1:B:199:PHE:CE2	2:B:400:LBV:HAD1	2.55	0.41
1:A:235:ASN:HA	1:A:236:PRO:HD3	1.74	0.41
1:B:289:LYS:HG2	1:B:289:LYS:H	1.66	0.41
1:B:123:GLN:CG	1:B:124:ARG:H	2.10	0.41
1:A:124:ARG:HD3	1:A:124:ARG:C	2.41	0.41
1:A:203:ASP:O	3:A:538:HOH:O	2.22	0.41
1:A:161:ARG:HH21	1:A:188:CYS:HB3	1.86	0.41
1:A:238:THR:HG21	3:A:776:HOH:O	2.20	0.41
1:B:46:ASP:OD1	1:B:231:THR:CG2	2.69	0.41
1:B:271:ILE:HD11	1:B:301:CYS:HB3	2.03	0.41
1:B:123:GLN:CG	1:B:124:ARG:N	2.75	0.40
1:B:87:VAL:C	3:B:573:HOH:O	2.55	0.40
1:A:298[A]:ARG:NH2	3:A:670:HOH:O	2.50	0.40
1:B:90:PRO:HB3	1:B:295:LEU:HD21	2.02	0.40

All (2) symmetry-related close contacts are listed below. The label for Atom-2 includes the symmetry operator and encoded unit-cell translations to be applied.

Atom-1	Atom-2	Interatomic distance (Å)	Clash overlap (Å)
1:B:39:MET:CE	3:B:645:HOH:O[3_655]	1.96	0.24
1:B:39:MET:CG	3:B:645:HOH:O[3_655]	1.97	0.23

5.3 Torsion angles [i](#)

5.3.1 Protein backbone [i](#)

In the following table, the Percentiles column shows the percent Ramachandran outliers of the chain as a percentile score with respect to all X-ray entries followed by that with respect to entries of similar resolution.

The Analysed column shows the number of residues for which the backbone conformation was analysed, and the total number of residues.

Mol	Chain	Analysed	Favoured	Allowed	Outliers	Percentiles	
1	A	311/327 (95%)	302 (97%)	4 (1%)	5 (2%)	9	2
1	B	310/327 (95%)	281 (91%)	17 (6%)	12 (4%)	3	0
All	All	621/654 (95%)	583 (94%)	21 (3%)	17 (3%)	5	1

All (17) Ramachandran outliers are listed below:

Mol	Chain	Res	Type
1	A	317[A]	GLU
1	A	317[B]	GLU
1	A	318	GLN
1	B	54	LEU
1	B	56	ILE
1	B	124	ARG
1	B	319	ALA
1	A	85	ALA
1	A	86	ALA
1	B	50	GLU
1	B	51	LEU
1	B	86	ALA
1	B	100	GLY
1	B	85	ALA
1	B	126	VAL
1	B	52	THR
1	B	97	MET

5.3.2 Protein sidechains [i](#)

In the following table, the Percentiles column shows the percent sidechain outliers of the chain as a percentile score with respect to all X-ray entries followed by that with respect to entries of similar resolution.

The Analysed column shows the number of residues for which the sidechain conformation was analysed, and the total number of residues.

Mol	Chain	Analysed	Rotameric	Outliers	Percentiles	
1	A	256/268 (96%)	242 (94%)	14 (6%)	21	8
1	B	255/268 (95%)	241 (94%)	14 (6%)	21	8
All	All	511/536 (95%)	483 (94%)	28 (6%)	21	8

All (28) residues with a non-rotameric sidechain are listed below:

Mol	Chain	Res	Type
1	A	54	LEU
1	A	56	ILE
1	A	74	ASN
1	A	99	ASP
1	A	112	ASP
1	A	123	GLN

Continued on next page...

Continued from previous page...

Mol	Chain	Res	Type
1	A	124	ARG
1	A	134	ARG
1	A	188	CYS
1	A	218	ARG
1	A	238	THR
1	A	262	ASN
1	A	278	ARG
1	A	294	ASP
1	B	12	LEU
1	B	13	SER
1	B	14	THR
1	B	40	THR
1	B	42	VAL
1	B	56	ILE
1	B	68	PHE
1	B	87	VAL
1	B	99	ASP
1	B	163	ILE
1	B	218	ARG
1	B	278	ARG
1	B	289	LYS
1	B	296	GLU

Some sidechains can be flipped to improve hydrogen bonding and reduce clashes. All (5) such sidechains are listed below:

Mol	Chain	Res	Type
1	A	105	ASN
1	A	224	ASN
1	A	306	GLN
1	A	318	GLN
1	B	318	GLN

5.3.3 RNA [i](#)

There are no RNA molecules in this entry.

5.4 Non-standard residues in protein, DNA, RNA chains [i](#)

There are no non-standard protein/DNA/RNA residues in this entry.

5.5 Carbohydrates [i](#)

There are no carbohydrates in this entry.

5.6 Ligand geometry [i](#)

2 ligands are modelled in this entry.

In the following table, the Counts columns list the number of bonds (or angles) for which Mogul statistics could be retrieved, the number of bonds (or angles) that are observed in the model and the number of bonds (or angles) that are defined in the Chemical Component Dictionary. The Link column lists molecule types, if any, to which the group is linked. The Z score for a bond length (or angle) is the number of standard deviations the observed value is removed from the expected value. A bond length (or angle) with $|Z| > 2$ is considered an outlier worth inspection. RMSZ is the root-mean-square of all Z scores of the bond lengths (or angles).

Mol	Type	Chain	Res	Link	Bond lengths			Bond angles		
					Counts	RMSZ	# Z > 2	Counts	RMSZ	# Z > 2
2	LBV	A	400	1	36,46,46	3.17	16 (44%)	41,67,67	3.57	20 (48%)
2	LBV	B	400	1	36,46,46	3.98	15 (41%)	41,67,67	3.79	25 (60%)

In the following table, the Chirals column lists the number of chiral outliers, the number of chiral centers analysed, the number of these observed in the model and the number defined in the Chemical Component Dictionary. Similar counts are reported in the Torsion and Rings columns. '-' means no outliers of that kind were identified.

Mol	Type	Chain	Res	Link	Chirals	Torsions	Rings
2	LBV	A	400	1	-	6/22/74/74	0/4/4/4
2	LBV	B	400	1	-	4/22/74/74	0/4/4/4

All (31) bond length outliers are listed below:

Mol	Chain	Res	Type	Atoms	Z	Observed(Å)	Ideal(Å)
2	B	400	LBV	CHC-C1C	18.42	1.50	1.35
2	A	400	LBV	CHC-C1C	11.52	1.44	1.35
2	A	400	LBV	CHB-C4A	6.78	1.48	1.34
2	A	400	LBV	C3D-C2D	5.98	1.49	1.37
2	B	400	LBV	CAA-C3A	5.77	1.49	1.33
2	B	400	LBV	C3D-C2D	5.75	1.48	1.37
2	A	400	LBV	CAA-C3A	5.21	1.47	1.33
2	B	400	LBV	C1C-C2C	4.86	1.53	1.45
2	B	400	LBV	CHB-C4A	4.53	1.43	1.34
2	A	400	LBV	CHD-C1D	4.06	1.47	1.38

Continued on next page...

Continued from previous page...

Mol	Chain	Res	Type	Atoms	Z	Observed(Å)	Ideal(Å)
2	A	400	LBV	C2C-C3C	4.03	1.45	1.36
2	B	400	LBV	C2C-C3C	3.91	1.45	1.36
2	B	400	LBV	CHD-C1D	3.77	1.47	1.38
2	B	400	LBV	O_D-C4D	3.76	1.30	1.23
2	B	400	LBV	C4C-C3C	3.52	1.53	1.45
2	B	400	LBV	O_A-C1A	3.47	1.30	1.23
2	B	400	LBV	C2A-C3A	-3.21	1.47	1.51
2	A	400	LBV	CHD-C4C	3.14	1.47	1.40
2	B	400	LBV	C1A-N_A	3.01	1.41	1.37
2	A	400	LBV	O_A-C1A	2.99	1.29	1.23
2	A	400	LBV	C3B-C2B	2.81	1.46	1.37
2	A	400	LBV	O_D-C4D	2.81	1.28	1.23
2	A	400	LBV	C4C-C3C	2.77	1.51	1.45
2	B	400	LBV	C3B-C2B	2.66	1.45	1.37
2	A	400	LBV	C2A-C1A	-2.44	1.48	1.51
2	A	400	LBV	C4D-N_D	-2.38	1.32	1.38
2	B	400	LBV	C4B-CHC	2.25	1.49	1.41
2	A	400	LBV	C1B-CHB	2.20	1.49	1.41
2	A	400	LBV	C1C-C2C	2.19	1.49	1.45
2	B	400	LBV	CHD-C4C	2.18	1.45	1.40
2	A	400	LBV	C2A-C3A	-2.10	1.49	1.51

All (45) bond angle outliers are listed below:

Mol	Chain	Res	Type	Atoms	Z	Observed(°)	Ideal(°)
2	B	400	LBV	O_A-C1A-C2A	-9.95	116.67	126.28
2	A	400	LBV	O_A-C1A-C2A	-9.09	117.49	126.28
2	A	400	LBV	C2A-C3A-C4A	7.55	116.08	107.81
2	A	400	LBV	C3D-C4D-N_D	6.93	114.02	106.19
2	B	400	LBV	C3D-C4D-N_D	6.80	113.87	106.19
2	B	400	LBV	CHC-C1C-N_C	-6.28	120.12	128.83
2	B	400	LBV	C2A-C3A-C4A	6.19	114.60	107.81
2	A	400	LBV	CAB-CBB-CGB	-5.96	102.67	112.67
2	A	400	LBV	O_A-C1A-N_A	-5.91	117.78	124.94
2	B	400	LBV	C2D-C1D-N_D	5.73	115.38	106.99
2	A	400	LBV	C3D-C2D-C1D	-5.69	101.15	108.03
2	A	400	LBV	C2D-C1D-N_D	5.66	115.28	106.99
2	A	400	LBV	CAA-C3A-C4A	-5.59	119.60	126.36
2	B	400	LBV	C3D-C2D-C1D	-5.54	101.33	108.03
2	B	400	LBV	O_A-C1A-N_A	-5.46	118.33	124.94
2	B	400	LBV	CAB-CBB-CGB	-5.43	103.57	112.67
2	B	400	LBV	CAC-C2C-C1C	5.41	134.59	125.01

Continued on next page...

Continued from previous page...

Mol	Chain	Res	Type	Atoms	Z	Observed(°)	Ideal(°)
2	B	400	LBV	CMC-C3C-C4C	5.26	133.16	125.06
2	B	400	LBV	C1D-N_D-C4D	-4.80	104.55	110.67
2	B	400	LBV	CAA-C3A-C4A	-4.74	120.63	126.36
2	B	400	LBV	C1C-C2C-C3C	-4.51	101.79	106.78
2	A	400	LBV	CHC-C1C-N_C	-4.51	122.57	128.83
2	A	400	LBV	C1D-N_D-C4D	-4.46	105.00	110.67
2	A	400	LBV	CAC-C2C-C1C	4.35	132.70	125.01
2	B	400	LBV	C2C-C1C-N_C	4.19	116.14	110.05
2	A	400	LBV	O_D-C4D-C3D	-4.04	120.30	129.46
2	B	400	LBV	CHD-C1D-C2D	-3.93	119.16	126.95
2	A	400	LBV	C2C-C1C-N_C	3.85	115.65	110.05
2	A	400	LBV	C1C-C2C-C3C	-3.84	102.53	106.78
2	B	400	LBV	CHB-C4A-C3A	-3.53	120.75	127.12
2	A	400	LBV	CHD-C1D-C2D	-3.34	120.33	126.95
2	B	400	LBV	O_D-C4D-C3D	-3.28	122.02	129.46
2	B	400	LBV	CHD-C4C-C3C	-2.85	117.56	124.90
2	B	400	LBV	CMD-C2D-C1D	2.69	127.53	124.17
2	A	400	LBV	C4D-C3D-C2D	-2.66	104.50	107.92
2	A	400	LBV	CMC-C3C-C4C	2.57	129.03	125.06
2	B	400	LBV	CMB-C2B-C3B	2.56	129.76	124.94
2	A	400	LBV	CMD-C2D-C1D	2.43	127.19	124.17
2	B	400	LBV	C4D-C3D-C2D	-2.39	104.85	107.92
2	B	400	LBV	CAC-C2C-C3C	-2.30	123.60	127.88
2	B	400	LBV	C1C-N_C-C4C	-2.16	102.44	106.51
2	B	400	LBV	C3C-C4C-N_C	2.10	115.02	110.53
2	B	400	LBV	CBA-CAA-C3A	-2.10	120.57	126.72
2	A	400	LBV	C4C-C3C-C2C	-2.08	104.11	106.51
2	A	400	LBV	C1D-CHD-C4C	2.05	133.09	128.08

There are no chirality outliers.

All (10) torsion outliers are listed below:

Mol	Chain	Res	Type	Atoms
2	A	400	LBV	C2A-C3A-CAA-CBA
2	A	400	LBV	C4A-C3A-CAA-CBA
2	A	400	LBV	C4D-C3D-CAD-CBD
2	A	400	LBV	C3C-C4C-CHD-C1D
2	B	400	LBV	C2A-C3A-CAA-CBA
2	B	400	LBV	C4A-C3A-CAA-CBA
2	B	400	LBV	C3C-C4C-CHD-C1D
2	A	400	LBV	N_C-C4C-CHD-C1D
2	B	400	LBV	N_C-C4C-CHD-C1D

Continued on next page...

Continued from previous page...

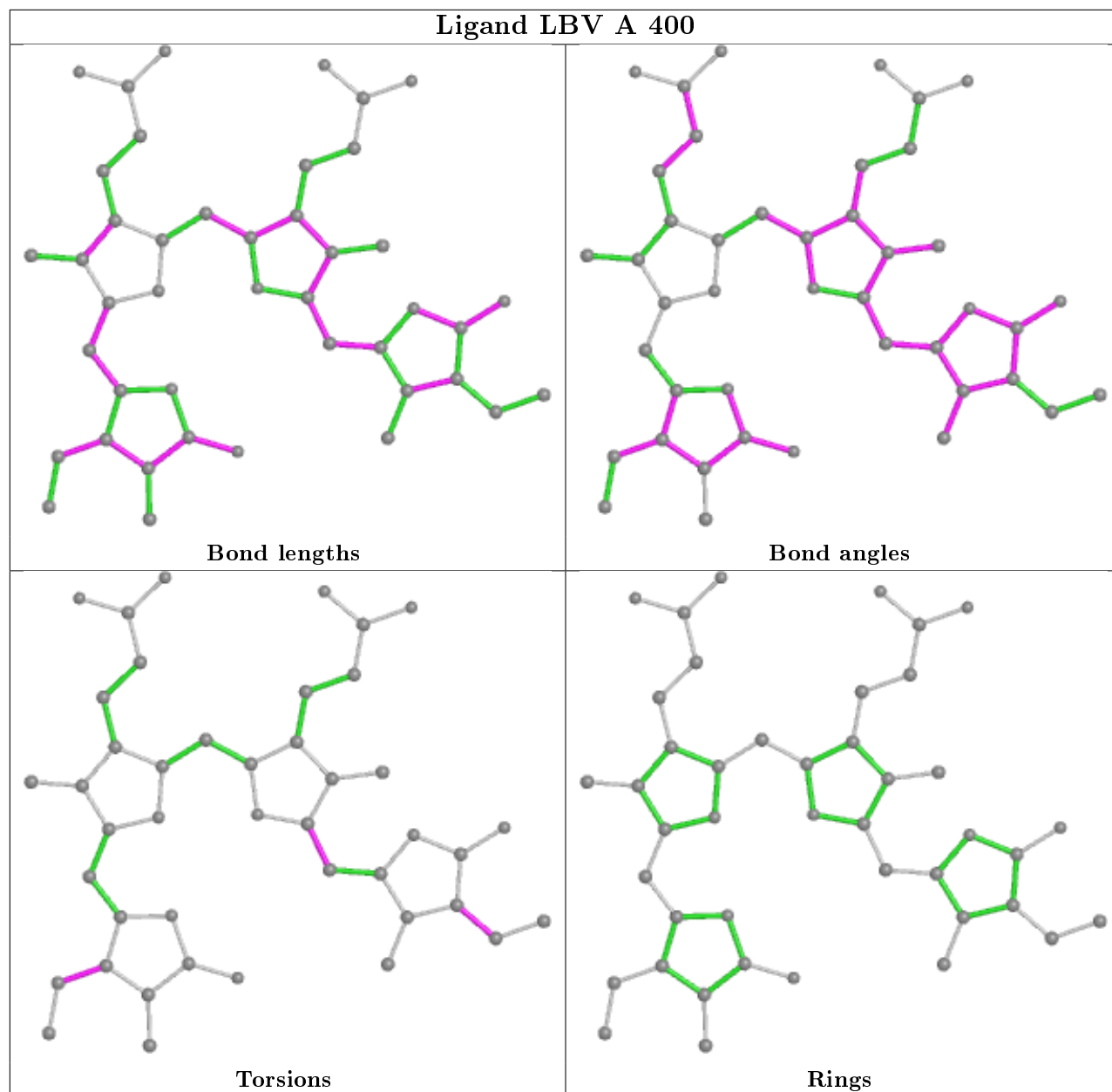
Mol	Chain	Res	Type	Atoms
2	A	400	LBV	C2D-C3D-CAD-CBD

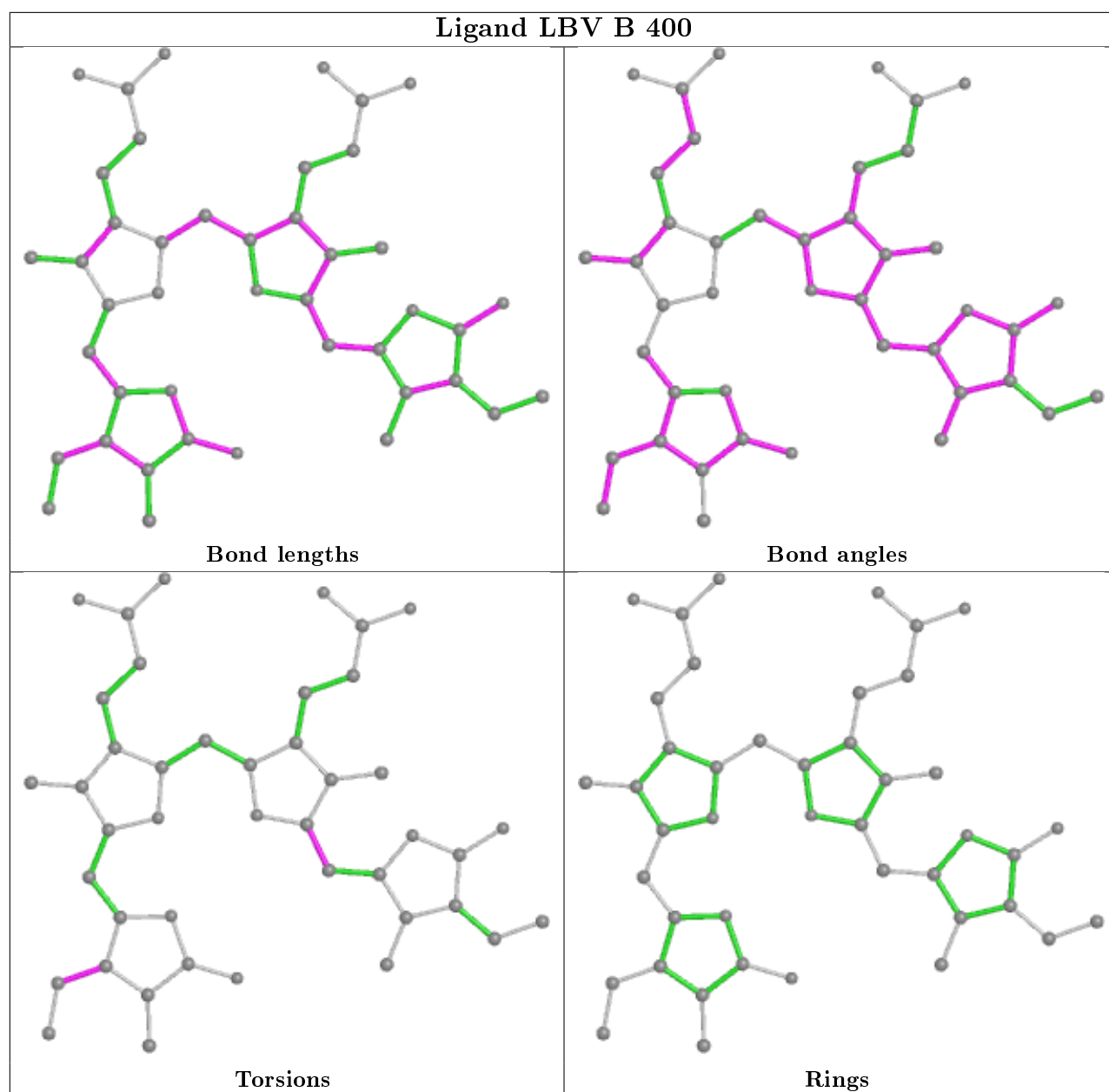
There are no ring outliers.

2 monomers are involved in 5 short contacts:

Mol	Chain	Res	Type	Clashes	Symm-Clashes
2	A	400	LBV	3	0
2	B	400	LBV	2	0

The following is a two-dimensional graphical depiction of Mogul quality analysis of bond lengths, bond angles, torsion angles, and ring geometry for all instances of the Ligand of Interest. In addition, ligands with molecular weight > 250 and outliers as shown on the validation Tables will also be included. For torsion angles, if less than 5% of the Mogul distribution of torsion angles is within 10 degrees of the torsion angle in question, then that torsion angle is considered an outlier. Any bond that is central to one or more torsion angles identified as an outlier by Mogul will be highlighted in the graph. For rings, the root-mean-square deviation (RMSD) between the ring in question and similar rings identified by Mogul is calculated over all ring torsion angles. If the average RMSD is greater than 60 degrees and the minimal RMSD between the ring in question and any Mogul-identified rings is also greater than 60 degrees, then that ring is considered an outlier. The outliers are highlighted in purple. The color gray indicates Mogul did not find sufficient equivalents in the CSD to analyse the geometry.





5.7 Other polymers [i](#)

There are no such residues in this entry.

5.8 Polymer linkage issues [i](#)

There are no chain breaks in this entry.

6 Fit of model and data

6.1 Protein, DNA and RNA chains

In the following table, the column labelled ‘#RSRZ> 2’ contains the number (and percentage) of RSRZ outliers, followed by percent RSRZ outliers for the chain as percentile scores relative to all X-ray entries and entries of similar resolution. The OWAB column contains the minimum, median, 95th percentile and maximum values of the occupancy-weighted average B-factor per residue. The column labelled ‘Q< 0.9’ lists the number of (and percentage) of residues with an average occupancy less than 0.9.

Mol	Chain	Analysed	<RSRZ>	#RSRZ>2	OWAB(Å ²)	Q<0.9
1	A	308/327 (94%)	0.26	16 (5%) 27 22	30, 45, 78, 125	0
1	B	310/327 (94%)	0.37	26 (8%) 11 8	29, 43, 99, 135	0
All	All	618/654 (94%)	0.32	42 (6%) 17 13	29, 45, 94, 135	0

All (42) RSRZ outliers are listed below:

Mol	Chain	Res	Type	RSRZ
1	B	126	VAL	14.6
1	B	51	LEU	11.0
1	A	319	ALA	6.5
1	A	85	ALA	6.4
1	B	54	LEU	6.1
1	A	84	GLY	5.9
1	B	97	MET	5.9
1	B	87	VAL	5.8
1	A	320	LEU	5.7
1	B	125	ASP	5.6
1	B	83	PRO	5.5
1	B	124	ARG	5.4
1	A	98	PRO	4.8
1	B	320	LEU	4.8
1	B	56	ILE	4.7
1	A	318	GLN	4.3
1	A	126	VAL	3.8
1	B	12	LEU	3.7
1	A	128	TYR	3.6
1	A	96	THR	3.6
1	B	14	THR	3.5
1	B	16	ASP	3.5
1	B	127	ARG	3.5
1	B	13	SER	3.4

Continued on next page...

Continued from previous page...

Mol	Chain	Res	Type	RSRZ
1	B	86	ALA	3.4
1	B	100	GLY	3.3
1	B	319	ALA	3.3
1	A	124	ARG	3.0
1	B	15	CYS	3.0
1	A	99	ASP	2.8
1	B	96	THR	2.7
1	B	11	ASP	2.5
1	A	125	ASP	2.5
1	B	84	GLY	2.4
1	A	127	ARG	2.3
1	B	68	PHE	2.3
1	A	134	ARG	2.2
1	A	295	LEU	2.2
1	B	133	PHE	2.1
1	B	95	PHE	2.1
1	B	55	ALA	2.0
1	A	178	PHE	2.0

6.2 Non-standard residues in protein, DNA, RNA chains [i](#)

There are no non-standard protein/DNA/RNA residues in this entry.

6.3 Carbohydrates [i](#)

There are no carbohydrates in this entry.

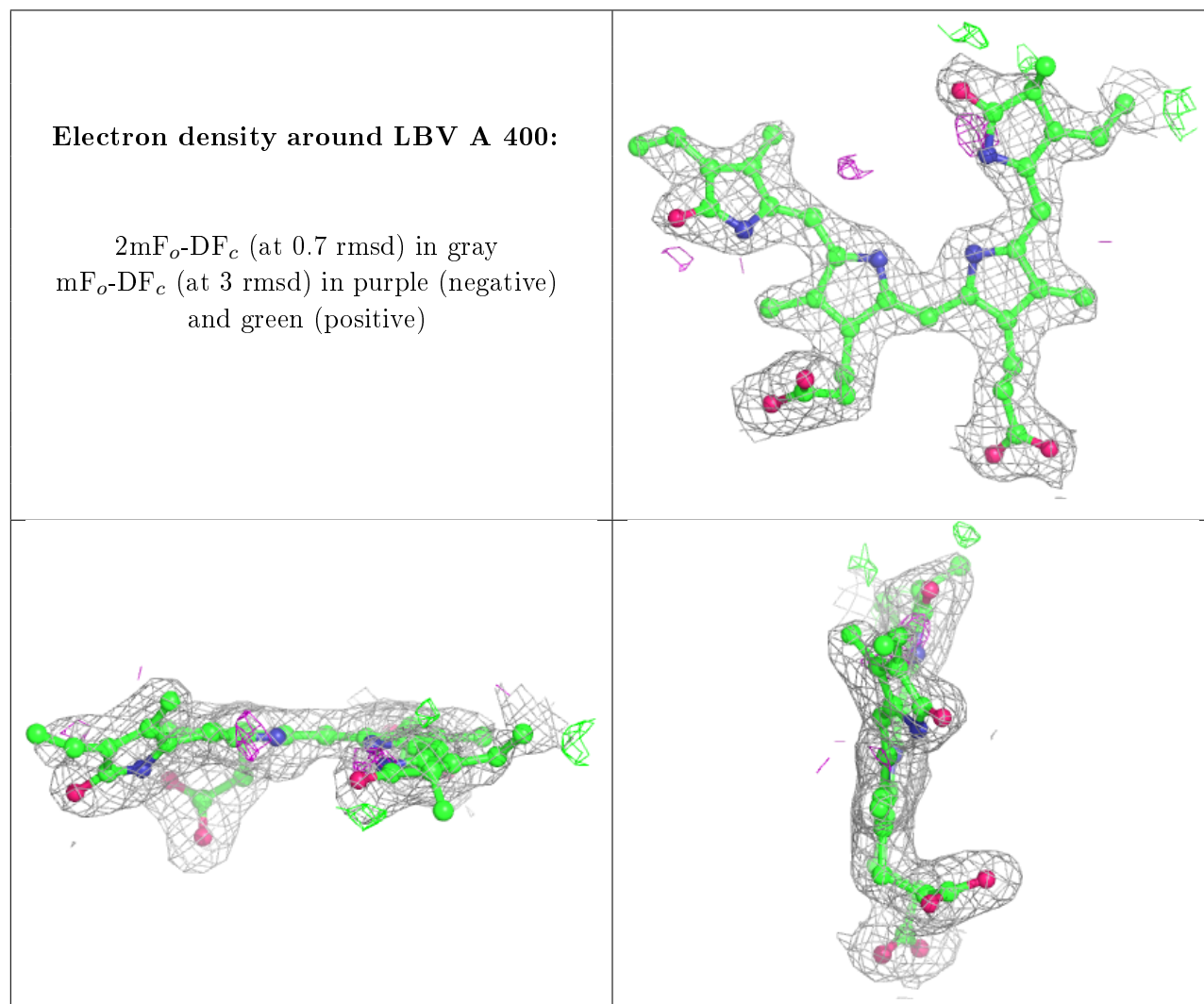
6.4 Ligands [i](#)

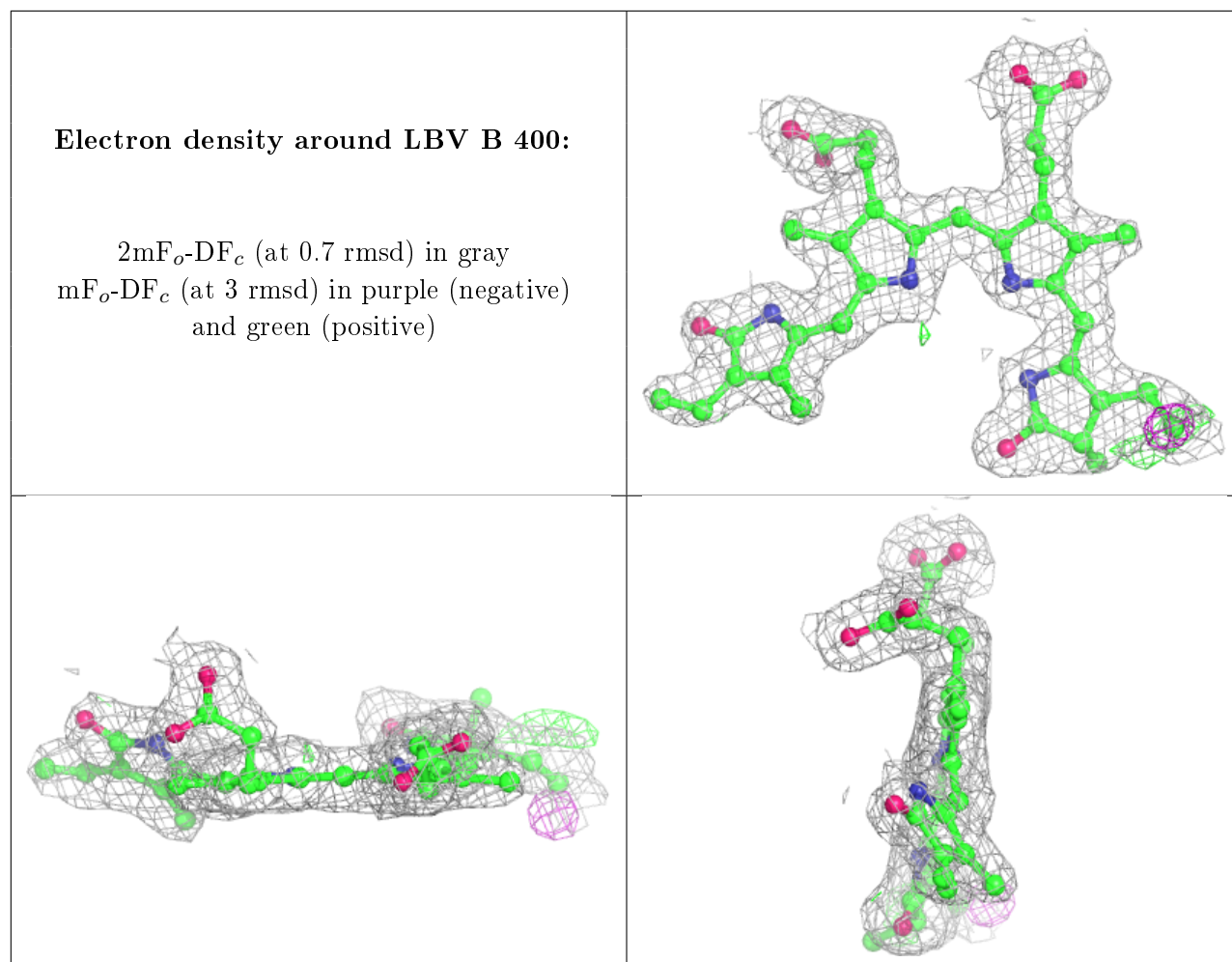
In the following table, the Atoms column lists the number of modelled atoms in the group and the number defined in the chemical component dictionary. The B-factors column lists the minimum, median, 95th percentile and maximum values of B factors of atoms in the group. The column labelled 'Q< 0.9' lists the number of atoms with occupancy less than 0.9.

Mol	Type	Chain	Res	Atoms	RSCC	RSR	B-factors(\AA^2)	Q<0.9
2	LBV	A	400	43/43	0.93	0.12	37,47,56,60	1
2	LBV	B	400	43/43	0.94	0.09	32,43,54,61	1

The following is a graphical depiction of the model fit to experimental electron density of all instances of the Ligand of Interest. In addition, ligands with molecular weight > 250 and outliers

as shown on the geometry validation Tables will also be included. Each fit is shown from different orientation to approximate a three-dimensional view.





6.5 Other polymers [i](#)

There are no such residues in this entry.