



wwPDB NMR Structure Validation Summary Report

Jun 3, 2023 – 11:21 AM EDT

PDB ID : 6E25
BMRB ID : 30491
Title : NMR solution structure of the CARD9 CARD bound to zinc
Authors : Holliday, M.J.; Dueber, E.C.; Fairbrother, W.J.
Deposited on : 2018-07-10

This is a wwPDB NMR Structure Validation Summary Report for a publicly released PDB entry.

We welcome your comments at validation@mail.wwpdb.org

A user guide is available at

<https://www.wwpdb.org/validation/2017/NMRValidationReportHelp>

with specific help available everywhere you see the  symbol.

The types of validation reports are described at

<http://www.wwpdb.org/validation/2017/FAQs#types>.

The following versions of software and data (see [references](#) ) were used in the production of this report:

MolProbity : 4.02b-467
Percentile statistics : 20191225.v01 (using entries in the PDB archive December 25th 2019)
wwPDB-RCI : v_1n_11_5_13_A (Berjanski et al., 2005)
PANAV : Wang et al. (2010)
wwPDB-ShiftChecker : v1.2
BMRB Restraints Analysis : v1.2
Ideal geometry (proteins) : Engh & Huber (2001)
Ideal geometry (DNA, RNA) : Parkinson et al. (1996)
Validation Pipeline (wwPDB-VP) : 2.33

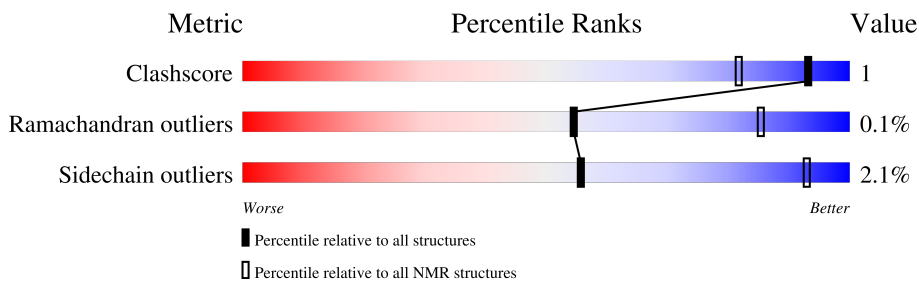
1 Overall quality at a glance

The following experimental techniques were used to determine the structure:

SOLUTION NMR

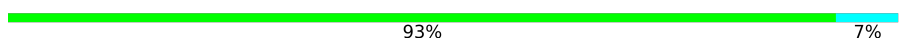
The overall completeness of chemical shifts assignment is 85%.

Percentile scores (ranging between 0-100) for global validation metrics of the entry are shown in the following graphic. The table shows the number of entries on which the scores are based.



Metric	Whole archive (#Entries)	NMR archive (#Entries)
Clashscore	158937	12864
Ramachandran outliers	154571	11451
Sidechain outliers	154315	11428

The table below summarises the geometric issues observed across the polymeric chains and their fit to the experimental data. The red, orange, yellow and green segments indicate the fraction of residues that contain outliers for ≥ 3 , 2, 1 and 0 types of geometric quality criteria. A cyan segment indicates the fraction of residues that are not part of the well-defined cores, and a grey segment represents the fraction of residues that are not modelled. The numeric value for each fraction is indicated below the corresponding segment, with a dot representing fractions $\leq 5\%$

Mol	Chain	Length	Quality of chain
1	A	97	

2 Ensemble composition and analysis i

This entry contains 20 models. Model 4 is the overall representative, medoid model (most similar to other models). The authors have identified model 1 as representative, based on the following criterion: *lowest energy*.

The following residues are included in the computation of the global validation metrics.

Well-defined (core) protein residues			
Well-defined core	Residue range (total)	Backbone RMSD (Å)	Medoid model
1	A:8-A:97 (90)	0.72	4

Ill-defined regions of proteins are excluded from the global statistics.

Ligands and non-protein polymers are included in the analysis.

The models can be grouped into 3 clusters and 1 single-model cluster was found.

Cluster number	Models
1	2, 3, 4, 5, 6, 7, 9, 10, 11, 14, 15, 16, 17, 18, 20
2	1, 13
3	8, 12
Single-model clusters	19

3 Entry composition [i](#)

There are 2 unique types of molecules in this entry. The entry contains 1591 atoms, of which 799 are hydrogens and 0 are deuteriums.

- Molecule 1 is a protein called Caspase recruitment domain-containing protein 9.

Mol	Chain	Residues	Atoms						Trace
			Total	C	H	N	O	S	
1	A	97	1590	505	799	132	151	3	0

- Molecule 2 is ZINC ION (three-letter code: ZN) (formula: Zn).

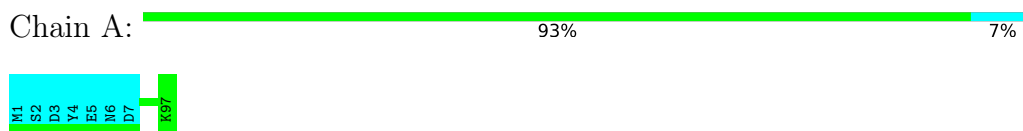
Mol	Chain	Residues	Atoms	
			Total	Zn
2	A	1	1	1

4 Residue-property plots

4.1 Average score per residue in the NMR ensemble

These plots are provided for all protein, RNA, DNA and oligosaccharide chains in the entry. The first graphic is the same as shown in the summary in section 1 of this report. The second graphic shows the sequence where residues are colour-coded according to the number of geometric quality criteria for which they contain at least one outlier: green = 0, yellow = 1, orange = 2 and red = 3 or more. Stretches of 2 or more consecutive residues without any outliers are shown as green connectors. Residues which are classified as ill-defined in the NMR ensemble, are shown in cyan with an underline colour-coded according to the previous scheme. Residues which were present in the experimental sample, but not modelled in the final structure are shown in grey.

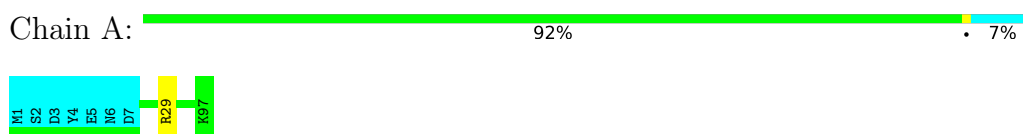
- Molecule 1: Caspase recruitment domain-containing protein 9



4.2 Residue scores for the representative (medoid) model from the NMR ensemble

The representative model is number 4. Colouring as in section 4.1 above.

- Molecule 1: Caspase recruitment domain-containing protein 9



5 Refinement protocol and experimental data overview

The models were refined using the following method: *simulated annealing, simulated annealing*.

Of the 100 calculated structures, 20 were deposited, based on the following criterion: *structures with the lowest energy*.

The following table shows the software used for structure solution, optimisation and refinement.

Software name	Classification	Version
CNS	refinement	1.2
CYANA	refinement	3.97
CYANA	structure calculation	3.97

The following table shows chemical shift validation statistics as aggregates over all chemical shift files. Detailed validation can be found in section 7 of this report.

Chemical shift file(s)	working_cs.cif
Number of chemical shift lists	1
Total number of shifts	1167
Number of shifts mapped to atoms	1167
Number of unparsed shifts	0
Number of shifts with mapping errors	0
Number of shifts with mapping warnings	0
Assignment completeness (well-defined parts)	85%

6 Model quality [i](#)

6.1 Standard geometry [i](#)

Bond lengths and bond angles in the following residue types are not validated in this section:
ZN

There are no covalent bond-length or bond-angle outliers.

There are no bond-length outliers.

There are no bond-angle outliers.

There are no chirality outliers.

There are no planarity outliers.

6.2 Too-close contacts [i](#)

In the following table, the Non-H and H(model) columns list the number of non-hydrogen atoms and hydrogen atoms in each chain respectively. The H(added) column lists the number of hydrogen atoms added and optimized by MolProbity. The Clashes column lists the number of clashes averaged over the ensemble.

Mol	Chain	Non-H	H(model)	H(added)	Clashes
1	A	732	754	754	2±1
All	All	14660	15080	15080	38

The all-atom clashscore is defined as the number of clashes found per 1000 atoms (including hydrogen atoms). The all-atom clashscore for this structure is 1.

5 of 24 unique clashes are listed below, sorted by their clash magnitude.

Atom-1	Atom-2	Clash(Å)	Distance(Å)	Models	
				Worst	Total
1:A:15:GLU:HA	1:A:18:ARG:HB2	0.57	1.75	2	7
1:A:37:CYS:SG	1:A:78:ALA:HB2	0.52	2.44	12	6
1:A:21:LEU:HD21	1:A:94:VAL:HG21	0.52	1.81	15	3
1:A:22:THR:HA	1:A:61:VAL:HB	0.52	1.81	18	1
1:A:41:ASN:HB2	1:A:44:ASP:HB2	0.51	1.81	14	1

6.3 Torsion angles [i](#)

6.3.1 Protein backbone [i](#)

In the following table, the Percentiles column shows the percent Ramachandran outliers of the chain as a percentile score with respect to all PDB entries followed by that with respect to all NMR entries. The Analysed column shows the number of residues for which the backbone conformation was analysed and the total number of residues.

Mol	Chain	Analysed	Favoured	Allowed	Outliers	Percentiles	
1	A	89/97 (92%)	87±1 (98±1%)	2±1 (2±1%)	0±0 (0±0%)	54	85
All	All	1780/1940 (92%)	1739 (98%)	39 (2%)	2 (0%)	54	85

All 2 unique Ramachandran outliers are listed below. They are sorted by the frequency of occurrence in the ensemble.

Mol	Chain	Res	Type	Models (Total)
1	A	73	HIS	1
1	A	56	ILE	1

6.3.2 Protein sidechains [i](#)

In the following table, the Percentiles column shows the percent sidechain outliers of the chain as a percentile score with respect to all PDB entries followed by that with respect to all NMR entries. The Analysed column shows the number of residues for which the sidechain conformation was analysed and the total number of residues.

Mol	Chain	Analysed	Rotameric	Outliers	Percentiles	
1	A	84/91 (92%)	82±2 (98±2%)	2±2 (2±2%)	56	93
All	All	1680/1820 (92%)	1644 (98%)	36 (2%)	56	93

5 of 18 unique residues with a non-rotameric sidechain are listed below. They are sorted by the frequency of occurrence in the ensemble.

Mol	Chain	Res	Type	Models (Total)
1	A	36	GLN	4
1	A	9	GLU	3
1	A	89	GLN	3
1	A	29	ARG	3
1	A	38	LYS	3

6.3.3 RNA [i](#)

There are no RNA molecules in this entry.

6.4 Non-standard residues in protein, DNA, RNA chains [i](#)

There are no non-standard protein/DNA/RNA residues in this entry.

6.5 Carbohydrates [i](#)

There are no monosaccharides in this entry.

6.6 Ligand geometry [i](#)

Of 1 ligands modelled in this entry, 1 is monoatomic - leaving 0 for Mogul analysis.

6.7 Other polymers [i](#)

There are no such molecules in this entry.

6.8 Polymer linkage issues [i](#)

There are no chain breaks in this entry.

7 Chemical shift validation [i](#)

The completeness of assignment taking into account all chemical shift lists is 85% for the well-defined parts and 84% for the entire structure.

7.1 Chemical shift list 1

File name: working_cs.cif

Chemical shift list name: *assigned_chem_shift_list*

7.1.1 Bookkeeping [i](#)

The following table shows the results of parsing the chemical shift list and reports the number of nuclei with statistically unusual chemical shifts.

Total number of shifts	1167
Number of shifts mapped to atoms	1167
Number of unparsed shifts	0
Number of shifts with mapping errors	0
Number of shifts with mapping warnings	0
Number of shift outliers (ShiftChecker)	2

The following errors were found when reading this chemical shift list.

- Chemical shift has been reported more than once. First 5 (of 0) occurrences are reported below.

List ID	Chain	Res	Type	Atom	Shift Data		
					Value	Uncertainty	Ambiguity
1	A	34	LEU	HD11	1.085	0.015	1
1	A	34	LEU	HD12	1.085	0.015	1
1	A	34	LEU	HD13	1.085	0.015	1
1	A	21	LEU	HD11	0.934	0.008	1
1	A	21	LEU	HD12	0.934	0.008	1
1	A	21	LEU	HD13	0.934	0.008	1

7.1.2 Chemical shift referencing [i](#)

The following table shows the suggested chemical shift referencing corrections.

Nucleus	# values	Correction \pm precision, ppm	Suggested action
$^{13}\text{C}_\alpha$	96	-0.86 ± 0.13	Should be checked
$^{13}\text{C}_\beta$	91	0.11 ± 0.08	None needed (< 0.5 ppm)

Continued on next page...

Continued from previous page...

Nucleus	# values	Correction \pm precision, ppm	Suggested action
$^{13}\text{C}'$	0	—	None (insufficient data)
^{15}N	87	1.01 \pm 0.54	None needed (imprecise)

7.1.3 Completeness of resonance assignments [i](#)

The following table shows the completeness of the chemical shift assignments for the well-defined regions of the structure. The overall completeness is 85%, i.e. 1107 atoms were assigned a chemical shift out of a possible 1296. 0 out of 23 assigned methyl groups (LEU and VAL) were assigned stereospecifically.

	Total	^1H	^{13}C	^{15}N
Backbone	351/445 (79%)	178/180 (99%)	90/180 (50%)	83/85 (98%)
Sidechain	686/767 (89%)	466/498 (94%)	214/238 (90%)	6/31 (19%)
Aromatic	70/84 (83%)	35/40 (88%)	34/42 (81%)	1/2 (50%)
Overall	1107/1296 (85%)	679/718 (95%)	338/460 (73%)	90/118 (76%)

7.1.4 Statistically unusual chemical shifts [i](#)

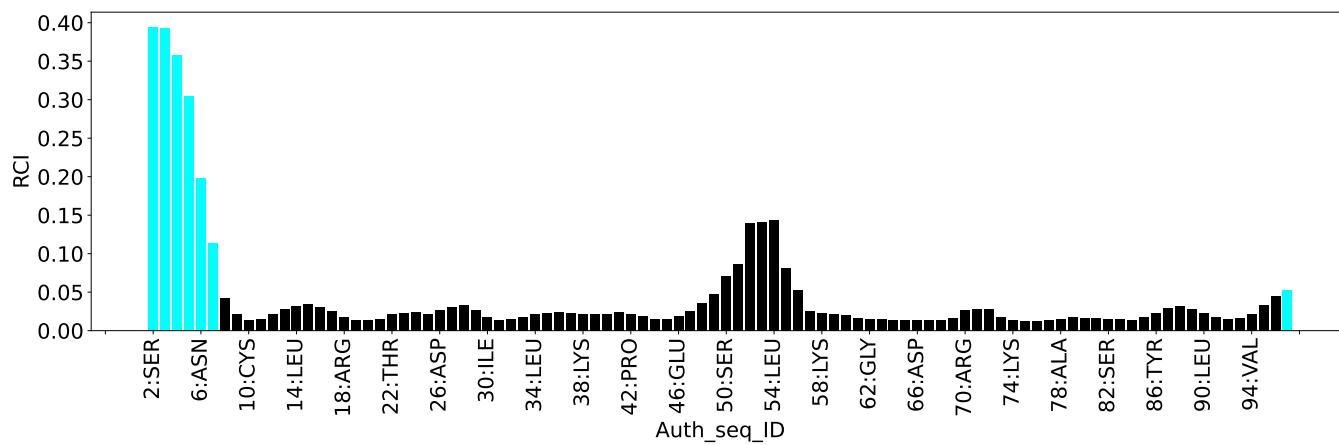
The following table lists the statistically unusual chemical shifts. These are statistical measures, and large deviations from the mean do not necessarily imply incorrect assignments. Molecules containing paramagnetic centres or hemes are expected to give rise to anomalous chemical shifts.

List Id	Chain	Res	Type	Atom	Shift, ppm	Expected range, ppm	Z-score
1	A	71	THR	HG1	5.17	0.08 – 2.19	19.1
1	A	84	GLU	HB3	0.60	0.95 – 3.05	-6.7

7.1.5 Random Coil Index (RCI) plots [i](#)

The image below reports *random coil index* values for the protein chains in the structure. The height of each bar gives a probability of a given residue to be disordered, as predicted from the available chemical shifts and the amino acid sequence. A value above 0.2 is an indication of significant predicted disorder. The colour of the bar shows whether the residue is in the well-defined core (black) or in the ill-defined residue ranges (cyan), as described in section 2 on ensemble composition. If well-defined core and ill-defined regions are not identified then it is shown as gray bars.

Random coil index (RCI) for chain A:



8 NMR restraints analysis

8.1 Conformationally restricting restraints

The following table provides the summary of experimentally observed NMR restraints in different categories. Restraints are classified into different categories based on the sequence separation of the atoms involved.

Description	Value
Total distance restraints	1675
Intra-residue ($ i-j =0$)	429
Sequential ($ i-j =1$)	422
Medium range ($ i-j >1$ and $ i-j <5$)	444
Long range ($ i-j \geq 5$)	319
Inter-chain	0
Hydrogen bond restraints	60
Disulfide bond restraints	1
Total dihedral-angle restraints	140
Number of unmapped restraints	0
Number of restraints per residue	18.7
Number of long range restraints per residue ¹	3.3

¹Long range hydrogen bonds and disulfide bonds are counted as long range restraints while calculating the number of long range restraints per residue

8.2 Residual restraint violations

This section provides the overview of the restraint violations analysis. The violations are binned as small, medium and large violations based on its absolute value. Average number of violations per model is calculated by dividing the total number of violations in each bin by the size of the ensemble.

8.2.1 Average number of distance violations per model

Distance violations less than 0.1 Å are not included in the calculation.

Bins (Å)	Average number of violations per model	Max (Å)
0.1-0.2 (Small)	5.6	0.2
0.2-0.5 (Medium)	1.1	0.46
>0.5 (Large)	None	None

8.2.2 Average number of dihedral-angle violations per model [i](#)

Dihedral-angle violations less than 1° are not included in the calculation.

Bins (°)	Average number of violations per model	Max (°)
1.0-10.0 (Small)	2.4	4.6
10.0-20.0 (Medium)	None	None
>20.0 (Large)	None	None

9 Distance violation analysis

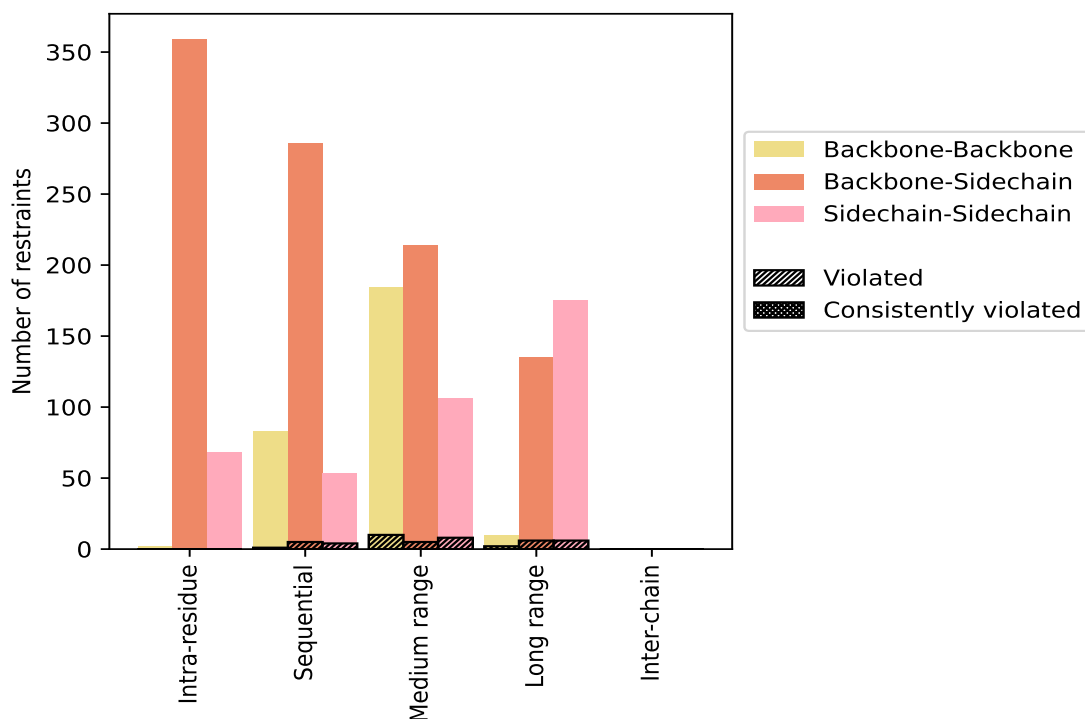
9.1 Summary of distance violations

The following table shows the summary of distance violations in different restraint categories based on the sequence separation of the atoms involved. Each category is further sub-divided into three sub-categories based on the atoms involved. Violations less than 0.1 Å are not included in the statistics.

Restrains type	Count	% ¹	Violated ³			Consistently Violated ⁴		
			Count	% ²	% ¹	Count	% ²	% ¹
Intra-residue (i-j =0)	429	25.6	0	0.0	0.0	0	0.0	0.0
Backbone-Backbone	2	0.1	0	0.0	0.0	0	0.0	0.0
Backbone-Sidechain	359	21.4	0	0.0	0.0	0	0.0	0.0
Sidechain-Sidechain	68	4.1	0	0.0	0.0	0	0.0	0.0
Sequential (i-j =1)	422	25.2	10	2.4	0.6	0	0.0	0.0
Backbone-Backbone	83	5.0	1	1.2	0.1	0	0.0	0.0
Backbone-Sidechain	286	17.1	5	1.7	0.3	0	0.0	0.0
Sidechain-Sidechain	53	3.2	4	7.5	0.2	0	0.0	0.0
Medium range (i-j >1 & i-j <5)	444	26.5	14	3.2	0.8	0	0.0	0.0
Backbone-Backbone	124	7.4	1	0.8	0.1	0	0.0	0.0
Backbone-Sidechain	214	12.8	5	2.3	0.3	0	0.0	0.0
Sidechain-Sidechain	106	6.3	8	7.5	0.5	0	0.0	0.0
Long range (i-j ≥5)	319	19.0	13	4.1	0.8	0	0.0	0.0
Backbone-Backbone	10	0.6	2	20.0	0.1	0	0.0	0.0
Backbone-Sidechain	135	8.1	6	4.4	0.4	0	0.0	0.0
Sidechain-Sidechain	174	10.4	5	2.9	0.3	0	0.0	0.0
Inter-chain	0	0.0	0	0.0	0.0	0	0.0	0.0
Backbone-Backbone	0	0.0	0	0.0	0.0	0	0.0	0.0
Backbone-Sidechain	0	0.0	0	0.0	0.0	0	0.0	0.0
Sidechain-Sidechain	0	0.0	0	0.0	0.0	0	0.0	0.0
Hydrogen bond	60	3.6	9	15.0	0.5	0	0.0	0.0
Disulfide bond	1	0.1	1	100.0	0.1	0	0.0	0.0
Total	1675	100.0	47	2.8	2.8	0	0.0	0.0
Backbone-Backbone	279	16.7	13	4.7	0.8	0	0.0	0.0
Backbone-Sidechain	994	59.3	16	1.6	1.0	0	0.0	0.0
Sidechain-Sidechain	402	24.0	18	4.5	1.1	0	0.0	0.0

¹ percentage calculated with respect to the total number of distance restraints, ² percentage calculated with respect to the number of restraints in a particular restraint category, ³ violated in at least one model, ⁴ violated in all the models

9.1.1 Bar chart : Distribution of distance restraints and violations [i](#)



Violated and consistently violated restraints are shown using different hatch patterns in their respective categories. The hydrogen bonds and disulfid bonds are counted in their appropriate category on the x-axis

9.2 Distance violation statistics for each model [i](#)

The following table provides the distance violation statistics for each model in the ensemble. Violations less than 0.1 Å are not included in the statistics.

Model ID	Number of violations						Mean (Å)	Max (Å)	SD ⁶ (Å)	Median (Å)
	IR ¹	SQ ²	MR ³	LR ⁴	IC ⁵	Total				
1	0	2	3	1	0	6	0.16	0.2	0.02	0.16
2	0	1	4	1	0	6	0.13	0.16	0.02	0.13
3	0	0	4	1	0	5	0.15	0.2	0.04	0.16
4	0	1	2	1	0	4	0.13	0.16	0.02	0.12
5	0	2	5	0	0	7	0.15	0.22	0.04	0.13
6	0	0	1	1	0	2	0.15	0.19	0.04	0.15
7	0	1	3	0	0	4	0.22	0.3	0.08	0.24
8	0	1	4	2	0	7	0.17	0.32	0.07	0.14
9	0	0	5	3	0	8	0.15	0.24	0.05	0.14
10	0	1	3	1	0	5	0.13	0.17	0.02	0.12
11	0	2	2	2	0	6	0.15	0.19	0.02	0.15

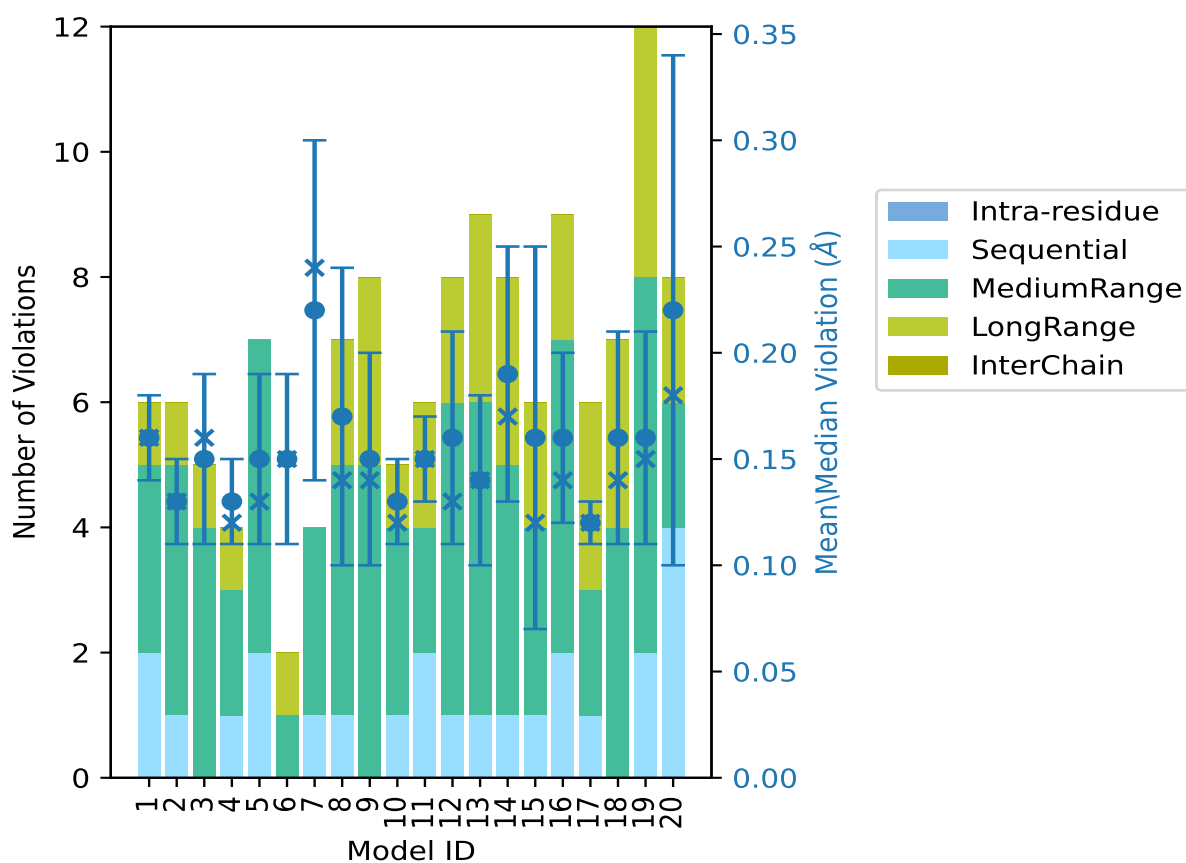
Continued on next page...

Continued from previous page...

Model ID	Number of violations						Mean (Å)	Max (Å)	SD ⁶ (Å)	Median (Å)
	IR ¹	SQ ²	MR ³	LR ⁴	IC ⁵	Total				
12	0	1	5	2	0	8	0.16	0.26	0.05	0.13
13	0	1	5	3	0	9	0.14	0.24	0.04	0.14
14	0	1	4	3	0	8	0.19	0.33	0.06	0.17
15	0	1	3	2	0	6	0.16	0.35	0.09	0.12
16	0	2	5	2	0	9	0.16	0.23	0.04	0.14
17	0	1	2	3	0	6	0.12	0.14	0.01	0.12
18	0	0	4	3	0	7	0.16	0.27	0.05	0.14
19	0	2	6	4	0	12	0.16	0.29	0.05	0.15
20	0	4	2	2	0	8	0.22	0.46	0.12	0.18

¹Intra-residue restraints, ²Sequential restraints, ³Medium range restraints, ⁴Long range restraints, ⁵Inter-chain restraints, ⁶Standard deviation

9.2.1 Bar graph : Distance Violation statistics for each model [i](#)



The mean(dot),median(x) and the standard deviation are shown in blue with respect to the y axis on the right

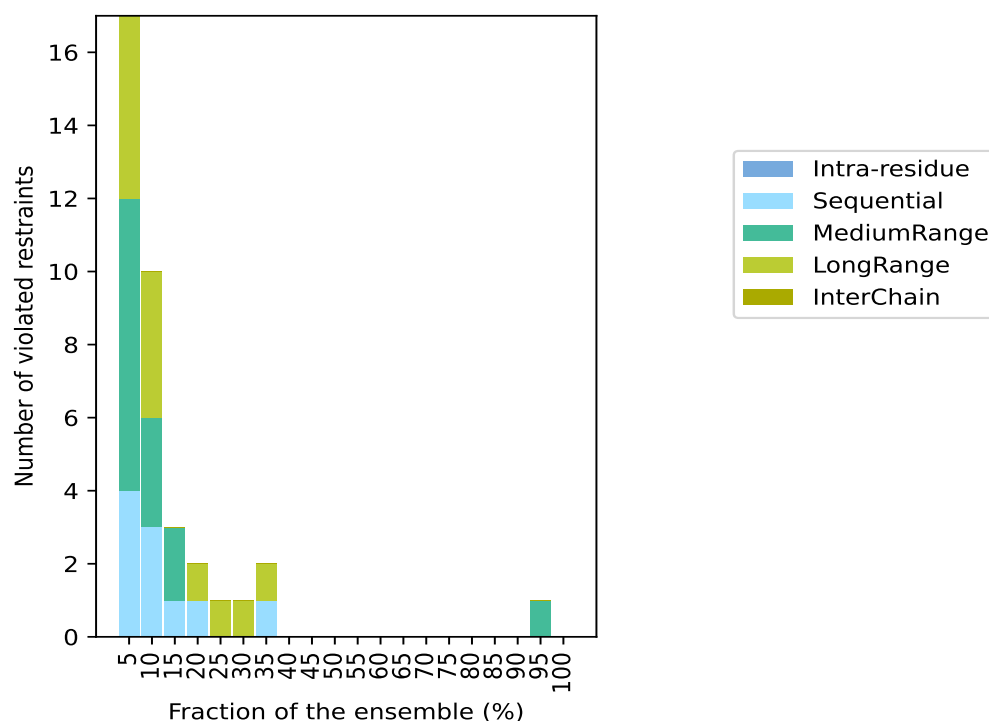
9.3 Distance violation statistics for the ensemble

Violation analysis may find that some restraints are violated in few models and some are violated in most of models. The following table provides this information as number of violated restraints for a given fraction of the ensemble. In total, 1577(IR:429, SQ:412, MR:430, LR:306, IC:0) restraints are not violated in the ensemble.

Number of violated restraints						Fraction of the ensemble	
IR ¹	SQ ²	MR ³	LR ⁴	IC ⁵	Total	Count ⁶	%
0	4	8	5	0	17	1	5.0
0	3	3	4	0	10	2	10.0
0	1	2	0	0	3	3	15.0
0	1	0	1	0	2	4	20.0
0	0	0	1	0	1	5	25.0
0	0	0	1	0	1	6	30.0
0	1	0	1	0	2	7	35.0
0	0	0	0	0	0	8	40.0
0	0	0	0	0	0	9	45.0
0	0	0	0	0	0	10	50.0
0	0	0	0	0	0	11	55.0
0	0	0	0	0	0	12	60.0
0	0	0	0	0	0	13	65.0
0	0	0	0	0	0	14	70.0
0	0	0	0	0	0	15	75.0
0	0	0	0	0	0	16	80.0
0	0	0	0	0	0	17	85.0
0	0	0	0	0	0	18	90.0
0	0	1	0	0	1	19	95.0
0	0	0	0	0	0	20	100.0

¹Intra-residue restraints, ²Sequential restraints, ³Medium range restraints, ⁴Long range restraints, ⁵Inter-chain restraints, ⁶ Number of models with violations

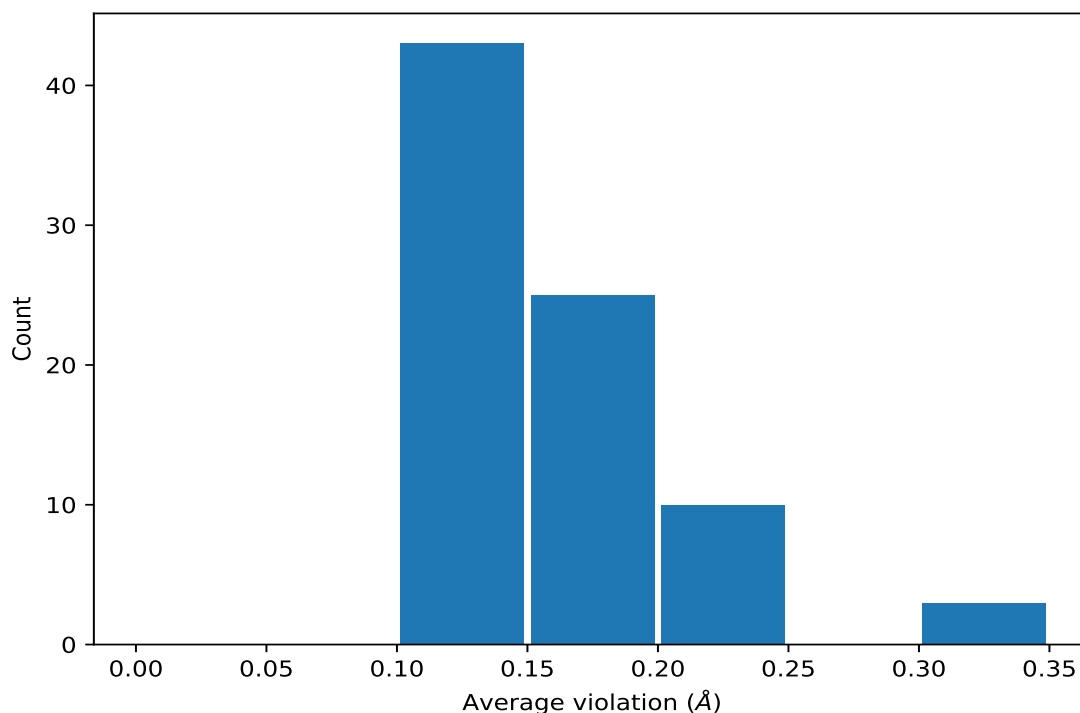
9.3.1 Bar graph : Distance violation statistics for the ensemble [i](#)



9.4 Most violated distance restraints in the ensemble [i](#)

9.4.1 Histogram : Distribution of mean distance violations [i](#)

The following histogram shows the distribution of the average value of the violation. The average is calculated for each restraint that is violated in more than one model over all the violated models in the ensemble



9.4.2 Table: Most violated distance restraints [i](#)

The following table provides the mean and the standard deviation of the violations for the 10 worst performing restraints, sorted by number of violated models and the mean violation value. The Key (restraint list ID, restraint ID) is the unique identifier for a given restraint. Rows with same key represent combinatorial or ambiguous restraints and are counted as a single restraint.

Key	Atom-1	Atom-2	Models ¹	Mean (Å)	SD ¹ (Å)	Median (Å)
(2,996)	1:A:30:ILE:HD11	1:A:33:TYR:HD1	19	0.18	0.05	0.16
(2,996)	1:A:30:ILE:HD11	1:A:33:TYR:HD2	19	0.18	0.05	0.16
(2,996)	1:A:30:ILE:HD12	1:A:33:TYR:HD1	19	0.18	0.05	0.16
(2,996)	1:A:30:ILE:HD12	1:A:33:TYR:HD2	19	0.18	0.05	0.16
(2,996)	1:A:30:ILE:HD13	1:A:33:TYR:HD1	19	0.18	0.05	0.16
(2,996)	1:A:30:ILE:HD13	1:A:33:TYR:HD2	19	0.18	0.05	0.16
(1,1)	1:A:14:LEU:O	1:A:17:PHE:H	10	0.12	0.01	0.12
(2,1433)	1:A:29:ARG:HD2	1:A:30:ILE:HA	7	0.2	0.07	0.2
(2,1433)	1:A:29:ARG:HD3	1:A:30:ILE:HA	7	0.2	0.07	0.2
(2,878)	1:A:22:THR:HB	1:A:63:VAL:H	7	0.15	0.04	0.14
(2,1113)	1:A:31:THR:HG21	1:A:49:LEU:HD11	6	0.14	0.02	0.14
(2,1113)	1:A:31:THR:HG21	1:A:49:LEU:HD12	6	0.14	0.02	0.14
(2,1113)	1:A:31:THR:HG21	1:A:49:LEU:HD13	6	0.14	0.02	0.14
(2,1113)	1:A:31:THR:HG22	1:A:49:LEU:HD11	6	0.14	0.02	0.14
(2,1113)	1:A:31:THR:HG22	1:A:49:LEU:HD12	6	0.14	0.02	0.14
(2,1113)	1:A:31:THR:HG22	1:A:49:LEU:HD13	6	0.14	0.02	0.14

Continued on next page...

Continued from previous page...

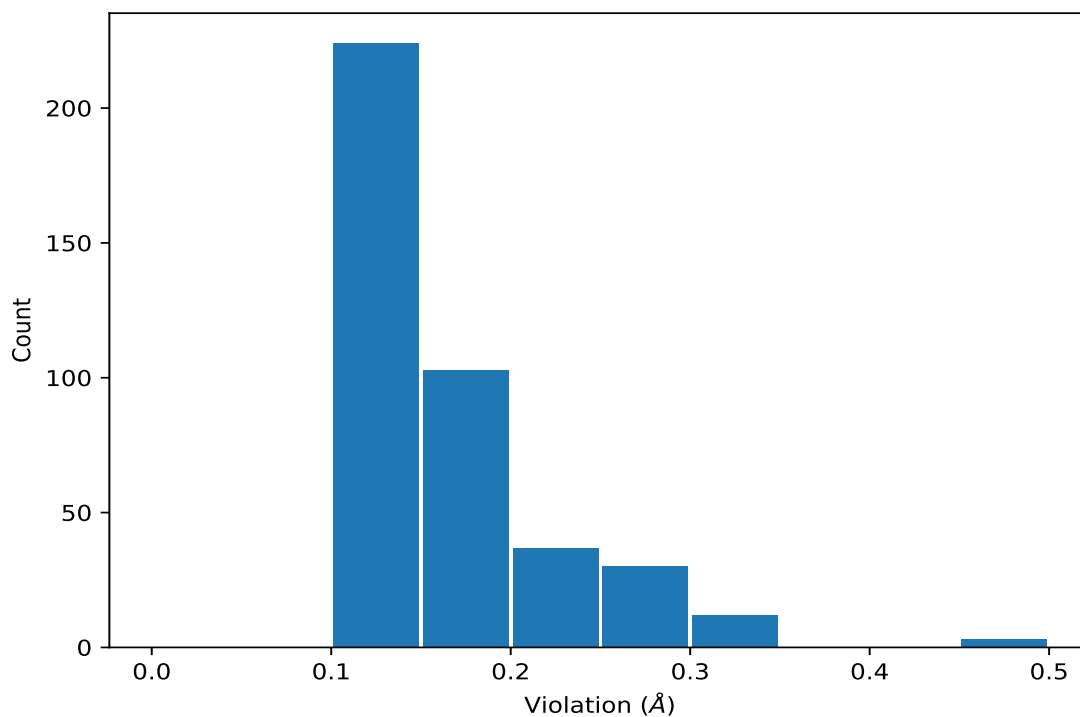
Key	Atom-1	Atom-2	Models ¹	Mean (Å)	SD ¹ (Å)	Median (Å)
(2,1113)	1:A:31:THR:HG23	1:A:49:LEU:HD11	6	0.14	0.02	0.14
(2,1113)	1:A:31:THR:HG23	1:A:49:LEU:HD12	6	0.14	0.02	0.14
(2,1113)	1:A:31:THR:HG23	1:A:49:LEU:HD13	6	0.14	0.02	0.14
(1,3)	1:A:15:GLU:O	1:A:18:ARG:H	6	0.11	0.0	0.11
(2,1496)	1:A:49:LEU:HA	1:A:60:LYS:HE2	5	0.21	0.06	0.24
(2,1496)	1:A:49:LEU:HA	1:A:60:LYS:HE3	5	0.21	0.06	0.24
(1,39)	1:A:68:LEU:O	1:A:71:THR:H	5	0.13	0.01	0.13
(2,1464)	1:A:37:CYS:HB2	1:A:38:LYS:HG2	4	0.16	0.02	0.16
(2,1464)	1:A:37:CYS:HB2	1:A:38:LYS:HG3	4	0.16	0.02	0.16
(2,1464)	1:A:37:CYS:HB3	1:A:38:LYS:HG2	4	0.16	0.02	0.16
(2,1464)	1:A:37:CYS:HB3	1:A:38:LYS:HG3	4	0.16	0.02	0.16
(2,1498)	1:A:49:LEU:HD21	1:A:60:LYS:HE2	4	0.14	0.04	0.12

¹Number of violated models, ²Standard deviation

9.5 All violated distance restraints [i](#)

9.5.1 Histogram : Distribution of distance violations [i](#)

The following histogram shows the distribution of the absolute value of the violation for all violated restraints in the ensemble.



9.5.2 Table : All distance violations [i](#)

The following table provides the 10 worst performing restraints, sorted by the violation value. The Key (restraint list ID, restraint ID) is the unique identifier for a given restraint. Rows with same key represent combinatorial or ambiguous restraints and are counted as a single restraint.

Key	Atom-1	Atom-2	Model ID	Violation (Å)
(2,1303)	1:A:13:VAL:HG11	1:A:14:LEU:HA	20	0.46
(2,1303)	1:A:13:VAL:HG12	1:A:14:LEU:HA	20	0.46
(2,1303)	1:A:13:VAL:HG13	1:A:14:LEU:HA	20	0.46
(2,916)	1:A:40:LEU:HD21	1:A:44:ASP:HB2	15	0.35
(2,916)	1:A:40:LEU:HD22	1:A:44:ASP:HB2	15	0.35
(2,916)	1:A:40:LEU:HD23	1:A:44:ASP:HB2	15	0.35
(2,574)	1:A:44:ASP:H	1:A:67:ILE:HD11	14	0.33
(2,574)	1:A:44:ASP:H	1:A:67:ILE:HD12	14	0.33
(2,574)	1:A:44:ASP:H	1:A:67:ILE:HD13	14	0.33
(2,996)	1:A:30:ILE:HD11	1:A:33:TYR:HD1	8	0.32
(2,996)	1:A:30:ILE:HD11	1:A:33:TYR:HD2	8	0.32
(2,996)	1:A:30:ILE:HD12	1:A:33:TYR:HD1	8	0.32
(2,996)	1:A:30:ILE:HD12	1:A:33:TYR:HD2	8	0.32
(2,996)	1:A:30:ILE:HD13	1:A:33:TYR:HD1	8	0.32
(2,996)	1:A:30:ILE:HD13	1:A:33:TYR:HD2	8	0.32
(2,1433)	1:A:29:ARG:HD2	1:A:30:ILE:HA	7	0.3
(2,1433)	1:A:29:ARG:HD3	1:A:30:ILE:HA	7	0.3
(2,1433)	1:A:29:ARG:HD2	1:A:30:ILE:HA	20	0.3
(2,1433)	1:A:29:ARG:HD3	1:A:30:ILE:HA	20	0.3
(2,996)	1:A:30:ILE:HD11	1:A:33:TYR:HD1	7	0.29
(2,996)	1:A:30:ILE:HD11	1:A:33:TYR:HD2	7	0.29
(2,996)	1:A:30:ILE:HD12	1:A:33:TYR:HD1	7	0.29
(2,996)	1:A:30:ILE:HD12	1:A:33:TYR:HD2	7	0.29
(2,996)	1:A:30:ILE:HD13	1:A:33:TYR:HD1	7	0.29
(2,996)	1:A:30:ILE:HD13	1:A:33:TYR:HD2	7	0.29
(2,1508)	1:A:51:ASP:HB2	1:A:56:ILE:HD11	19	0.29
(2,1508)	1:A:51:ASP:HB2	1:A:56:ILE:HD12	19	0.29
(2,1508)	1:A:51:ASP:HB2	1:A:56:ILE:HD13	19	0.29
(2,1508)	1:A:51:ASP:HB3	1:A:56:ILE:HD11	19	0.29
(2,1508)	1:A:51:ASP:HB3	1:A:56:ILE:HD12	19	0.29
(2,1508)	1:A:51:ASP:HB3	1:A:56:ILE:HD13	19	0.29
(2,1496)	1:A:49:LEU:HA	1:A:60:LYS:HE2	20	0.29
(2,1496)	1:A:49:LEU:HA	1:A:60:LYS:HE3	20	0.29
(2,1565)	1:A:74:LYS:HG2	1:A:77:VAL:HG21	18	0.27

10 Dihedral-angle violation analysis [i](#)

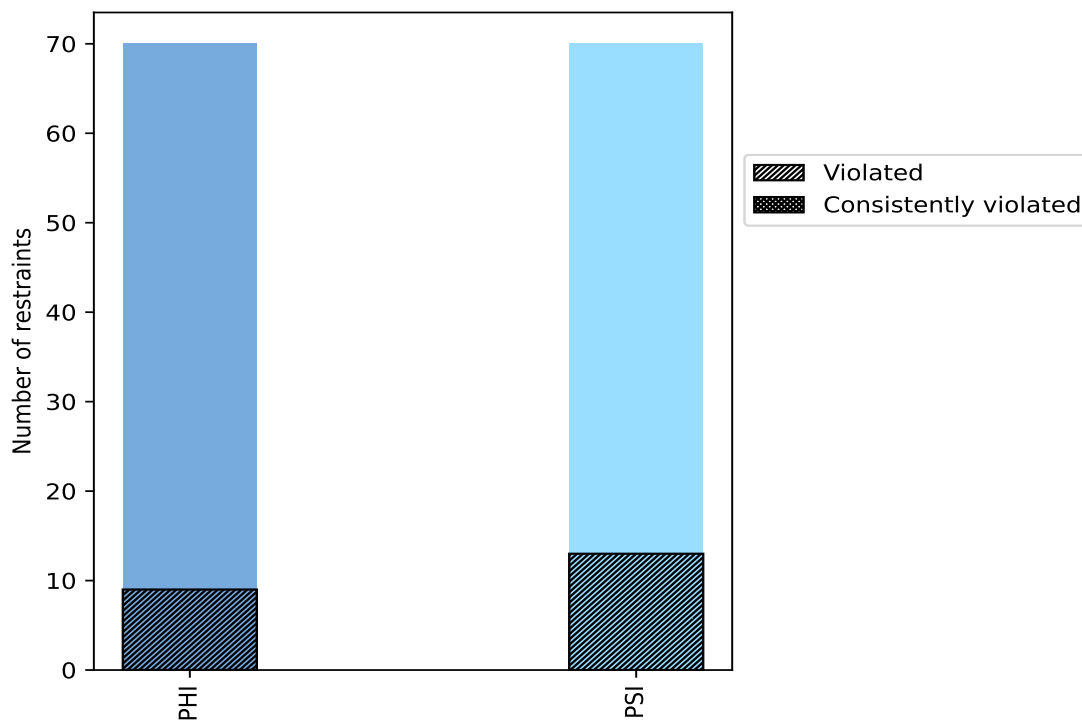
10.1 Summary of dihedral-angle violations [i](#)

The following table provides the summary of dihedral-angle violations in different dihedral-angle types. Violations less than 1° are not included in the calculation.

Angle type	Count	% ¹	Violated ³			Consistently Violated ⁴		
			Count	% ²	% ¹	Count	% ²	% ¹
PHI	70	50.0	9	12.9	6.4	0	0.0	0.0
PSI	70	50.0	13	18.6	9.3	0	0.0	0.0
Total	140	100.0	22	15.7	15.7	0	0.0	0.0

¹ percentage calculated with respect to total number of dihedral-angle restraints, ² percentage calculated with respect to number of restraints in a particular dihedral-angle type, ³ violated in at least one model, ⁴ violated in all the models

10.1.1 Bar chart : Distribution of dihedral-angles and violations [i](#)



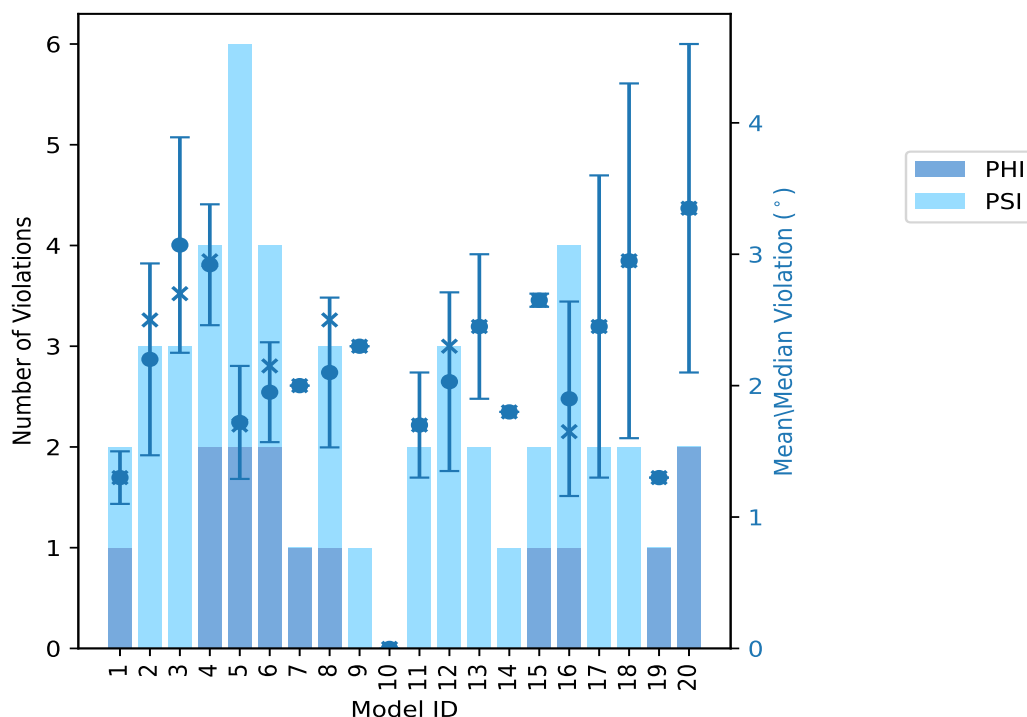
Violated and consistently violated restraints are shown using different hatch patterns in their respective categories

10.2 Dihedral-angle violation statistics for each model

The following table provides the dihedral-angle violation statistics for each model in the ensemble. Violations less than 1° are not included in the statistics.

Model ID	Number of violations			Mean (°)	Max (°)	SD (°)	Median (°)
	PHI	PSI	Total				
1	1	1	2	1.3	1.5	0.2	1.3
2	0	3	3	2.2	2.9	0.73	2.5
3	0	3	3	3.07	4.2	0.82	2.7
4	2	2	4	2.92	3.5	0.46	2.95
5	2	4	6	1.72	2.5	0.43	1.7
6	2	2	4	1.95	2.2	0.38	2.15
7	1	0	1	2.0	2.0	0.0	2.0
8	1	2	3	2.1	2.5	0.57	2.5
9	0	1	1	2.3	2.3	0.0	2.3
10	0	0	0	0.0	0.0	0.0	0.0
11	0	2	2	1.7	2.1	0.4	1.7
12	0	3	3	2.03	2.7	0.68	2.3
13	0	2	2	2.45	3.0	0.55	2.45
14	0	1	1	1.8	1.8	0.0	1.8
15	1	1	2	2.65	2.7	0.05	2.65
16	1	3	4	1.9	3.1	0.74	1.65
17	0	2	2	2.45	3.6	1.15	2.45
18	0	2	2	2.95	4.3	1.35	2.95
19	1	0	1	1.3	1.3	0.0	1.3
20	2	0	2	3.35	4.6	1.25	3.35

10.2.1 Bar graph : Dihedral violation statistics for each model [i](#)



The mean(dot),median(x) and the standard deviation are shown in blue with respect to the y axis on the right

10.3 Dihedral-angle violation statistics for the ensemble [i](#)

Violation analysis may find that some restraints are violated in very few models and some are violated in most of models. The following table provides this information as number of violated restraints for a given fraction of ensemble.

Number of violated restraints			Fraction of the ensemble	
PHI	PSI	Total	Count ¹	%
6	8	14	1	5.0
2	2	4	2	10.0
0	1	1	3	15.0
1	1	2	4	20.0
0	0	0	5	25.0
0	0	0	6	30.0
0	0	0	7	35.0
0	0	0	8	40.0
0	0	0	9	45.0
0	0	0	10	50.0
0	0	0	11	55.0

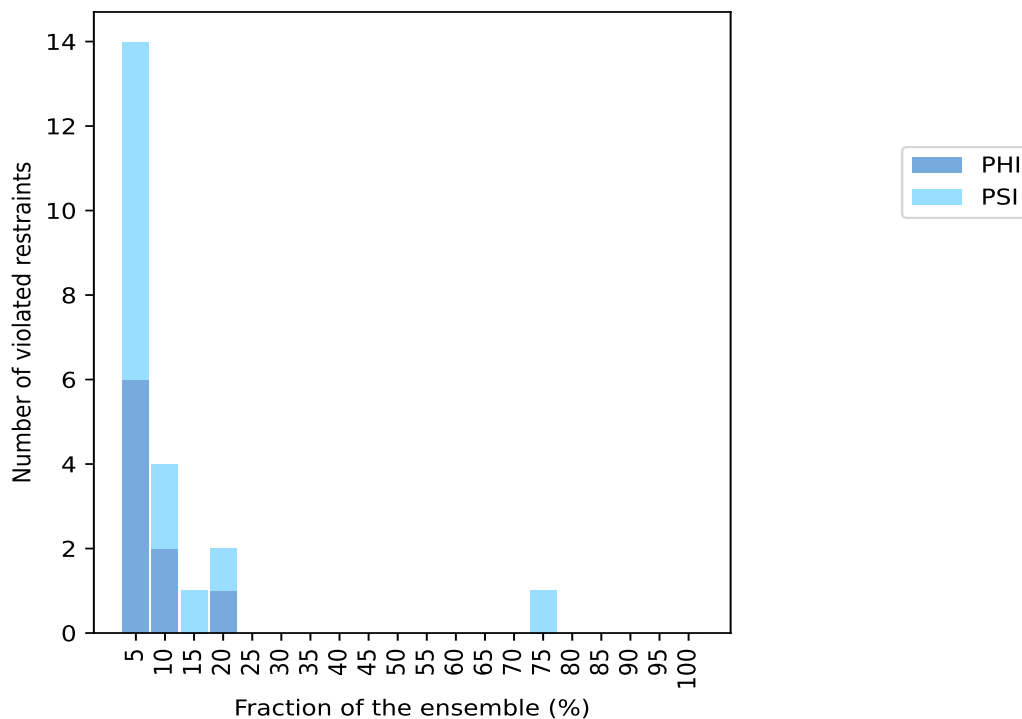
Continued on next page...

Continued from previous page...

Number of violated restraints			Fraction of the ensemble	
PHI	PSI	Total	Count ¹	%
0	0	0	12	60.0
0	0	0	13	65.0
0	0	0	14	70.0
0	1	1	15	75.0
0	0	0	16	80.0
0	0	0	17	85.0
0	0	0	18	90.0
0	0	0	19	95.0
0	0	0	20	100.0

¹ Number of models with violations

10.3.1 Bar graph : Dihedral-angle Violation statistics for the ensemble [i](#)

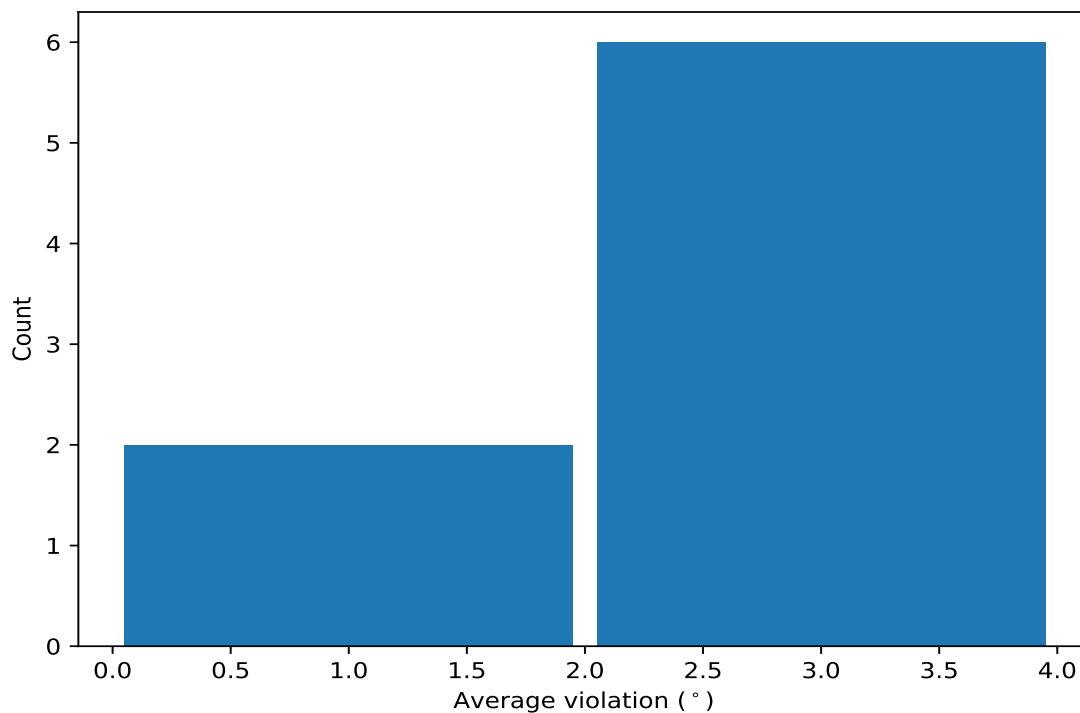


10.4 Most violated dihedral-angle restraints in the ensemble [i](#)

10.4.1 Histogram : Distribution of mean dihedral-angle violations [i](#)

The following histogram shows the distribution of the average value of the violation. The average is calculated for each restraint that is violated in more than one model over all the violated models

in the ensemble



10.4.2 Table: Most violated dihedral-angle restraints [i](#)

The following table provides the mean and the standard deviation of the violation for each restraint sorted by number of violated models and the mean value. The Key (restraint list ID, restraint ID) is the unique identifier for a given restraint.

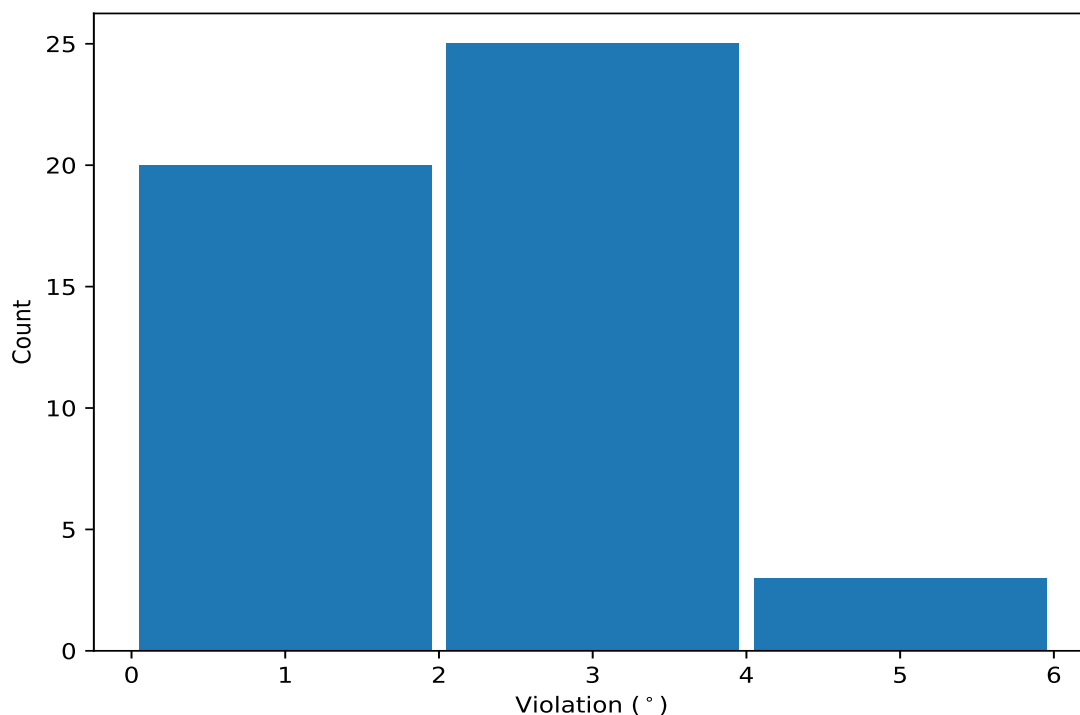
Key	Atom-1	Atom-2	Atom-3	Atom-4	Models ¹	Mean	SD ²	Median
(1,124)	1:A:85:LEU:N	1:A:85:LEU:CA	1:A:85:LEU:C	1:A:86:TYR:N	15	2.32	0.63	2.3
(1,70)	1:A:56:ILE:N	1:A:56:ILE:CA	1:A:56:ILE:C	1:A:57:ARG:N	4	3.5	0.82	3.7
(1,75)	1:A:58:LYS:C	1:A:59:ARG:N	1:A:59:ARG:CA	1:A:59:ARG:C	4	1.8	0.54	1.65
(1,8)	1:A:11:TRP:N	1:A:11:TRP:CA	1:A:11:TRP:C	1:A:12:SER:N	3	2.67	0.78	2.7
(1,7)	1:A:10:CYS:C	1:A:11:TRP:N	1:A:11:TRP:CA	1:A:11:TRP:C	2	3.25	1.35	3.25
(1,98)	1:A:70:ARG:N	1:A:70:ARG:CA	1:A:70:ARG:C	1:A:71:THR:N	2	2.2	0.7	2.2
(1,1)	1:A:7:ASP:C	1:A:8:ASP:N	1:A:8:ASP:CA	1:A:8:ASP:C	2	2.1	0.0	2.1
(1,16)	1:A:15:GLU:N	1:A:15:GLU:CA	1:A:15:GLU:C	1:A:16:GLY:N	2	1.45	0.25	1.45

¹ Number of violated models, ²Standard deviation, All angle values are in degree (°)

10.5 All violated dihedral-angle restraints [i](#)

10.5.1 Histogram : Distribution of violations [i](#)

The following histogram shows the distribution of the absolute value of the violation for all violated restraints in the ensemble.



10.5.2 Table: All violated dihedral-angle restraints [i](#)

The following table provides the list of violations for the 10 worst performing restraints, sorted by the violation value. The Key (restraint list ID, restraint ID) is the unique identifier for a given restraint.

Key	Atom-1	Atom-2	Atom-3	Atom-4	Model ID	Violation (°)
(1,7)	1:A:10:CYS:C	1:A:11:TRP:N	1:A:11:TRP:CA	1:A:11:TRP:C	20	4.6
(1,70)	1:A:56:ILE:N	1:A:56:ILE:CA	1:A:56:ILE:C	1:A:57:ARG:N	18	4.3
(1,70)	1:A:56:ILE:N	1:A:56:ILE:CA	1:A:56:ILE:C	1:A:57:ARG:N	3	4.2
(1,8)	1:A:11:TRP:N	1:A:11:TRP:CA	1:A:11:TRP:C	1:A:12:SER:N	17	3.6
(1,124)	1:A:85:LEU:N	1:A:85:LEU:CA	1:A:85:LEU:C	1:A:86:TYR:N	4	3.5
(1,70)	1:A:56:ILE:N	1:A:56:ILE:CA	1:A:56:ILE:C	1:A:57:ARG:N	4	3.2
(1,124)	1:A:85:LEU:N	1:A:85:LEU:CA	1:A:85:LEU:C	1:A:86:TYR:N	16	3.1
(1,124)	1:A:85:LEU:N	1:A:85:LEU:CA	1:A:85:LEU:C	1:A:86:TYR:N	13	3.0
(1,98)	1:A:70:ARG:N	1:A:70:ARG:CA	1:A:70:ARG:C	1:A:71:THR:N	2	2.9
(1,8)	1:A:11:TRP:N	1:A:11:TRP:CA	1:A:11:TRP:C	1:A:12:SER:N	3	2.7