



Full wwPDB X-ray Structure Validation Report ⓘ

May 15, 2020 – 01:04 am BST

PDB ID : 3E34
Title : Protein farnesyltransferase complexed with FPP and ethylenediamine-scaffold inhibitor 10
Authors : Hast, M.A.; Beese, L.S.
Deposited on : 2008-08-06
Resolution : 2.05 Å(reported)

This is a Full wwPDB X-ray Structure Validation Report for a publicly released PDB entry.

We welcome your comments at validation@mail.wwpdb.org

A user guide is available at

<https://www.wwpdb.org/validation/2017/XrayValidationReportHelp>

with specific help available everywhere you see the ⓘ symbol.

The following versions of software and data (see [references ⓘ](#)) were used in the production of this report:

MolProbity : 4.02b-467
Mogul : 1.8.5 (274361), CSD as541be (2020)
Xtriage (Phenix) : 1.13
EDS : 2.11
buster-report : 1.1.7 (2018)
Percentile statistics : 20191225.v01 (using entries in the PDB archive December 25th 2019)
Refmac : 5.8.0158
CCP4 : 7.0.044 (Gargrove)
Ideal geometry (proteins) : Engh & Huber (2001)
Ideal geometry (DNA, RNA) : Parkinson et al. (1996)
Validation Pipeline (wwPDB-VP) : 2.11

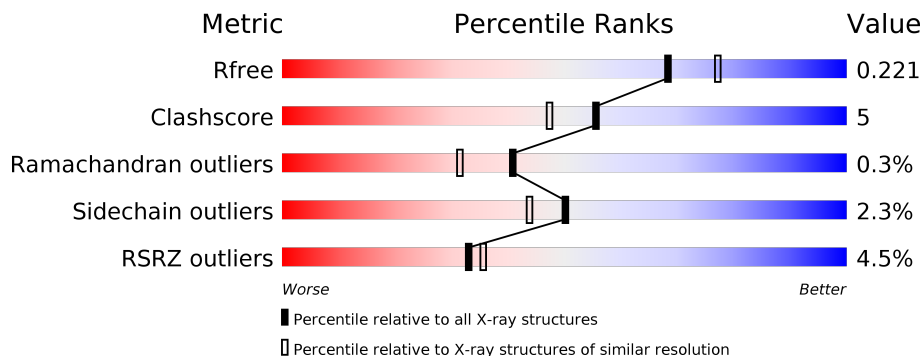
1 Overall quality at a glance

The following experimental techniques were used to determine the structure:

X-RAY DIFFRACTION

The reported resolution of this entry is 2.05 Å.

Percentile scores (ranging between 0-100) for global validation metrics of the entry are shown in the following graphic. The table shows the number of entries on which the scores are based.



Metric	Whole archive (#Entries)	Similar resolution (#Entries, resolution range(Å))
R_{free}	130704	1692 (2.04-2.04)
Clashscore	141614	1773 (2.04-2.04)
Ramachandran outliers	138981	1752 (2.04-2.04)
Sidechain outliers	138945	1752 (2.04-2.04)
RSRZ outliers	127900	1672 (2.04-2.04)

The table below summarises the geometric issues observed across the polymeric chains and their fit to the electron density. The red, orange, yellow and green segments on the lower bar indicate the fraction of residues that contain outliers for ≥ 3 , 2, 1 and 0 types of geometric quality criteria respectively. A grey segment represents the fraction of residues that are not modelled. The numeric value for each fraction is indicated below the corresponding segment, with a dot representing fractions $\leq 5\%$. The upper red bar (where present) indicates the fraction of residues that have poor fit to the electron density. The numeric value is given above the bar.

Mol	Chain	Length	Quality of chain
1	A	377	<p>4% 75% 9% • 14%</p>
2	B	437	<p>4% 84% 8% • 7%</p>

2 Entry composition [i](#)

There are 6 unique types of molecules in this entry. The entry contains 6400 atoms, of which 0 are hydrogens and 0 are deuteriums.

In the tables below, the ZeroOcc column contains the number of atoms modelled with zero occupancy, the AltConf column contains the number of residues with at least one atom in alternate conformation and the Trace column contains the number of residues modelled with at most 2 atoms.

- Molecule 1 is a protein called Protein farnesyltransferase/geranylgeranyltransferase type-1 subunit alpha.

Mol	Chain	Residues	Atoms					ZeroOcc	AltConf	Trace
			Total	C	N	O	S			
1	A	323	2745	1746	481	513	5	0	0	0

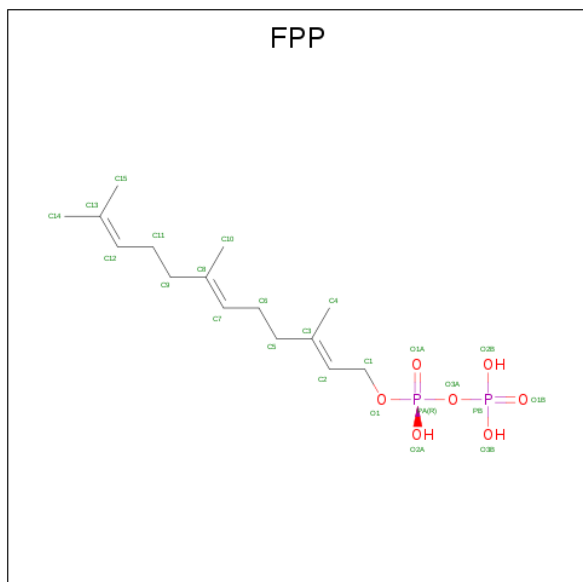
- Molecule 2 is a protein called Protein farnesyltransferase subunit beta.

Mol	Chain	Residues	Atoms					ZeroOcc	AltConf	Trace
			Total	C	N	O	S			
2	B	407	3203	2050	550	580	23	0	0	0

- Molecule 3 is ZINC ION (three-letter code: ZN) (formula: Zn).

Mol	Chain	Residues	Atoms		ZeroOcc	AltConf
			Total	Zn		
3	B	1	1	1	0	0

- Molecule 4 is FARNESYL DIPHOSPHATE (three-letter code: FPP) (formula: C₁₅H₂₈O₇P₂).



4 Data and refinement statistics

Property	Value	Source
Space group	P 61	Depositor
Cell constants a, b, c, α , β , γ	170.17Å 170.17Å 69.47Å 90.00° 90.00° 120.00°	Depositor
Resolution (Å)	32.16 – 2.05 32.16 – 2.05	Depositor EDS
% Data completeness (in resolution range)	99.9 (32.16-2.05) 99.9 (32.16-2.05)	Depositor EDS
R_{merge}	(Not available)	Depositor
R_{sym}	(Not available)	Depositor
$\langle I/\sigma(I) \rangle$ ¹	2.50 (at 2.05Å)	Xtrriage
Refinement program	REFMAC 5.4.0077	Depositor
R, R_{free}	0.192 , 0.219 0.193 , 0.221	Depositor DCC
R_{free} test set	3633 reflections (5.06%)	wwPDB-VP
Wilson B-factor (Å ²)	23.4	Xtrriage
Anisotropy	0.096	Xtrriage
Bulk solvent k_{sol} (e/Å ³), B_{sol} (Å ²)	0.40 , 47.8	EDS
L-test for twinning ²	$\langle L \rangle = 0.49$, $\langle L^2 \rangle = 0.32$	Xtrriage
Estimated twinning fraction	0.032 for h,-h-k,-l	Xtrriage
F_o, F_c correlation	0.94	EDS
Total number of atoms	6400	wwPDB-VP
Average B, all atoms (Å ²)	25.0	wwPDB-VP

Xtrriage's analysis on translational NCS is as follows: *The largest off-origin peak in the Patterson function is 3.61% of the height of the origin peak. No significant pseudotranslation is detected.*

¹Intensities estimated from amplitudes.

²Theoretical values of $\langle |L| \rangle$, $\langle L^2 \rangle$ for acentric reflections are 0.5, 0.333 respectively for untwinned datasets, and 0.375, 0.2 for perfectly twinned datasets.

5 Model quality [i](#)

5.1 Standard geometry [i](#)

Bond lengths and bond angles in the following residue types are not validated in this section: ZN, ED1, FPP

The Z score for a bond length (or angle) is the number of standard deviations the observed value is removed from the expected value. A bond length (or angle) with $|Z| > 5$ is considered an outlier worth inspection. RMSZ is the root-mean-square of all Z scores of the bond lengths (or angles).

Mol	Chain	Bond lengths		Bond angles	
		RMSZ	# Z >5	RMSZ	# Z >5
1	A	0.46	0/2812	0.54	0/3817
2	B	0.44	0/3292	0.57	1/4473 (0.0%)
All	All	0.45	0/6104	0.55	1/8290 (0.0%)

There are no bond length outliers.

All (1) bond angle outliers are listed below:

Mol	Chain	Res	Type	Atoms	Z	Observed(°)	Ideal(°)
2	B	308	LEU	CA-CB-CG	-7.61	97.79	115.30

There are no chirality outliers.

There are no planarity outliers.

5.2 Too-close contacts [i](#)

In the following table, the Non-H and H(model) columns list the number of non-hydrogen atoms and hydrogen atoms in the chain respectively. The H(added) column lists the number of hydrogen atoms added and optimized by MolProbity. The Clashes column lists the number of clashes within the asymmetric unit, whereas Symm-Clashes lists symmetry related clashes.

Mol	Chain	Non-H	H(model)	H(added)	Clashes	Symm-Clashes
1	A	2745	0	2666	25	0
2	B	3203	0	3130	29	0
3	B	1	0	0	0	0
4	B	24	0	25	2	0
5	B	53	0	47	17	0
6	A	175	0	0	2	0
6	B	199	0	0	1	0
All	All	6400	0	5868	61	0

The all-atom clashscore is defined as the number of clashes found per 1000 atoms (including hydrogen atoms). The all-atom clashscore for this structure is 5.

All (61) close contacts within the same asymmetric unit are listed below, sorted by their clash magnitude.

Atom-1	Atom-2	Interatomic distance (Å)	Clash overlap (Å)
1:A:152:MET:O	1:A:156:ILE:HG23	1.62	0.99
5:B:1003:ED1:HBGA	5:B:1003:ED1:HBBA	1.46	0.95
2:B:151:ALA:HB1	5:B:1003:ED1:HAN	1.53	0.91
1:A:156:ILE:HG22	1:A:172:ARG:HH12	1.38	0.88
2:B:291:ARG:NH2	4:B:1002:FPP:O1A	2.14	0.80
2:B:102:TRP:HE1	5:B:1003:ED1:HAN	1.51	0.74
2:B:102:TRP:NE1	5:B:1003:ED1:HAN	2.05	0.71
1:A:156:ILE:HG22	1:A:172:ARG:NH1	2.08	0.69
5:B:1003:ED1:HBGA	5:B:1003:ED1:CBB	2.22	0.67
2:B:325:MET:SD	2:B:381:MET:HG3	2.39	0.62
5:B:1003:ED1:CBG	5:B:1003:ED1:HBBA	2.26	0.62
2:B:151:ALA:HB1	5:B:1003:ED1:CAN	2.29	0.62
1:A:77:PRO:HG3	1:A:102:TYR:CZ	2.36	0.60
2:B:361:TYR:HE1	5:B:1003:ED1:CAM	2.13	0.60
2:B:308:LEU:HD13	2:B:330:PHE:HB3	1.85	0.57
2:B:75:ARG:NH2	2:B:393:VAL:O	2.38	0.56
2:B:239:ILE:HB	2:B:252:THR:HA	1.88	0.55
5:B:1003:ED1:SCA	5:B:1003:ED1:HAY	2.48	0.54
2:B:192:LEU:HD23	2:B:199:VAL:HG23	1.89	0.53
1:A:357:ARG:HG2	1:A:357:ARG:HH11	1.74	0.53
2:B:151:ALA:CB	5:B:1003:ED1:HAN	2.34	0.53
2:B:422:GLY:O	2:B:423:PHE:HB2	2.07	0.53
2:B:361:TYR:HE1	5:B:1003:ED1:HAM	1.76	0.51
1:A:155:ILE:HA	1:A:158:ILE:HG22	1.91	0.51
1:A:152:MET:O	1:A:156:ILE:CG2	2.47	0.51
1:A:155:ILE:HD12	1:A:158:ILE:CG2	2.41	0.51
2:B:87:ARG:NH2	2:B:125:ASP:OD2	2.30	0.51
2:B:102:TRP:NE1	5:B:1003:ED1:CAN	2.73	0.49
2:B:333:GLN:HG3	2:B:387:MET:SD	2.53	0.48
2:B:417:GLN:HG2	6:B:2831:HOH:O	2.12	0.48
5:B:1003:ED1:HAS	5:B:1003:ED1:HAP	1.42	0.47
1:A:287:ARG:HB3	1:A:291:ARG:HD3	1.97	0.47
2:B:361:TYR:CE1	5:B:1003:ED1:CAM	2.96	0.47
2:B:51:VAL:O	2:B:55:ILE:HG12	2.15	0.47
1:A:156:ILE:CG2	1:A:172:ARG:HH12	2.17	0.47
2:B:253:PHE:HA	2:B:307:LEU:HD21	1.98	0.46
1:A:55:PHE:HB3	1:A:56:LEU:H	1.59	0.46

Continued on next page...

Continued from previous page...

Atom-1	Atom-2	Interatomic distance (Å)	Clash overlap (Å)
1:A:156:ILE:HG21	6:A:2768:HOH:O	2.15	0.45
2:B:218:THR:HB	2:B:219:PRO:HD2	1.99	0.45
2:B:185:LYS:HD3	2:B:191:PHE:CZ	2.52	0.45
2:B:102:TRP:CZ2	5:B:1003:ED1:HAP	2.52	0.45
1:A:311:LEU:HD23	1:A:311:LEU:C	2.38	0.44
1:A:294:ASN:O	1:A:298:GLN:HG3	2.17	0.44
1:A:59:ASP:C	1:A:59:ASP:OD1	2.57	0.43
5:B:1003:ED1:OAH	5:B:1003:ED1:HAY	2.18	0.43
2:B:192:LEU:HD23	2:B:199:VAL:CG2	2.48	0.43
1:A:189:ILE:HD11	1:A:205:HIS:HD2	1.84	0.43
1:A:303:GLN:O	1:A:307:SER:HB2	2.19	0.42
1:A:155:ILE:HD12	1:A:158:ILE:HG21	2.01	0.42
1:A:284:LEU:HD13	1:A:295:LEU:HD22	2.01	0.42
1:A:112:ARG:HA	1:A:140:LEU:CD2	2.49	0.42
1:A:78:VAL:HA	1:A:79:PRO:HD3	1.94	0.41
2:B:368:SER:O	2:B:372:ILE:HG12	2.21	0.41
1:A:205:HIS:O	1:A:209:VAL:HG23	2.20	0.41
2:B:68:VAL:HA	2:B:69:PRO:HD3	1.94	0.41
1:A:362:SER:O	1:A:366:LYS:HG2	2.21	0.40
5:B:1003:ED1:OAI	5:B:1003:ED1:HAY	2.22	0.40
1:A:184:GLN:NE2	6:A:2947:HOH:O	2.53	0.40
2:B:193:MET:SD	2:B:203:SER:HB3	2.61	0.40
2:B:202:ARG:HD2	4:B:1002:FPP:H142	2.03	0.40
1:A:189:ILE:HD11	1:A:205:HIS:CD2	2.56	0.40

There are no symmetry-related clashes.

5.3 Torsion angles [i](#)

5.3.1 Protein backbone [i](#)

In the following table, the Percentiles column shows the percent Ramachandran outliers of the chain as a percentile score with respect to all X-ray entries followed by that with respect to entries of similar resolution.

The Analysed column shows the number of residues for which the backbone conformation was analysed, and the total number of residues.

Mol	Chain	Analysed	Favoured	Allowed	Outliers	Percentiles
1	A	321/377 (85%)	307 (96%)	12 (4%)	2 (1%)	25 15

Continued on next page...

Continued from previous page...

Mol	Chain	Analysed	Favoured	Allowed	Outliers	Percentiles	
2	B	405/437 (93%)	400 (99%)	5 (1%)	0	100	100
All	All	726/814 (89%)	707 (97%)	17 (2%)	2 (0%)	41	31

All (2) Ramachandran outliers are listed below:

Mol	Chain	Res	Type
1	A	326	GLN
1	A	304	PRO

5.3.2 Protein sidechains [i](#)

In the following table, the Percentiles column shows the percent sidechain outliers of the chain as a percentile score with respect to all X-ray entries followed by that with respect to entries of similar resolution.

The Analysed column shows the number of residues for which the sidechain conformation was analysed, and the total number of residues.

Mol	Chain	Analysed	Rotameric	Outliers	Percentiles	
1	A	301/338 (89%)	290 (96%)	11 (4%)	34	27
2	B	344/371 (93%)	340 (99%)	4 (1%)	71	70
All	All	645/709 (91%)	630 (98%)	15 (2%)	50	44

All (15) residues with a non-rotameric sidechain are listed below:

Mol	Chain	Res	Type
1	A	55	PHE
1	A	125	GLU
1	A	156	ILE
1	A	173	ARG
1	A	245	SER
1	A	257	GLU
1	A	303	GLN
1	A	326	GLN
1	A	334	LEU
1	A	348	LYS
1	A	372	ASP
2	B	29	GLU
2	B	53	GLU
2	B	68	VAL

Continued on next page...

Continued from previous page...

Mol	Chain	Res	Type
2	B	87	ARG

Some sidechains can be flipped to improve hydrogen bonding and reduce clashes. All (3) such sidechains are listed below:

Mol	Chain	Res	Type
1	A	135	HIS
1	A	201	HIS
1	A	326	GLN

5.3.3 RNA [i](#)

There are no RNA molecules in this entry.

5.4 Non-standard residues in protein, DNA, RNA chains [i](#)

There are no non-standard protein/DNA/RNA residues in this entry.

5.5 Carbohydrates [i](#)

There are no carbohydrates in this entry.

5.6 Ligand geometry [i](#)

Of 3 ligands modelled in this entry, 1 is monoatomic - leaving 2 for Mogul analysis.

In the following table, the Counts columns list the number of bonds (or angles) for which Mogul statistics could be retrieved, the number of bonds (or angles) that are observed in the model and the number of bonds (or angles) that are defined in the Chemical Component Dictionary. The Link column lists molecule types, if any, to which the group is linked. The Z score for a bond length (or angle) is the number of standard deviations the observed value is removed from the expected value. A bond length (or angle) with $|Z| > 2$ is considered an outlier worth inspection. RMSZ is the root-mean-square of all Z scores of the bond lengths (or angles).

Mol	Type	Chain	Res	Link	Bond lengths			Bond angles		
					Counts	RMSZ	# Z > 2	Counts	RMSZ	# Z > 2
4	FPP	B	1002	-	21,23,23	2.26	5 (23%)	27,31,31	1.33	2 (7%)
5	ED1	B	1003	3	51,57,57	4.32	9 (17%)	73,81,81	3.57	34 (46%)

In the following table, the Chirals column lists the number of chiral outliers, the number of chiral

centers analysed, the number of these observed in the model and the number defined in the Chemical Component Dictionary. Similar counts are reported in the Torsion and Rings columns. '2' means no outliers of that kind were identified.

Mol	Type	Chain	Res	Link	Chirals	Torsions	Rings
4	FPP	B	1002	-	-	8/25/25/25	-
5	ED1	B	1003	3	-	17/47/59/59	0/5/5/5

All (14) bond length outliers are listed below:

Mol	Chain	Res	Type	Atoms	Z	Observed(Å)	Ideal(Å)
5	B	1003	ED1	OAI-SCA	18.79	1.64	1.43
5	B	1003	ED1	OAH-SCA	16.07	1.61	1.43
5	B	1003	ED1	CBT-SCA	-13.20	1.61	1.78
5	B	1003	ED1	OBK-CBM	7.03	1.46	1.33
5	B	1003	ED1	CBN-CAK	-6.68	1.29	1.44
4	B	1002	FPP	PB-O2B	5.72	1.76	1.54
4	B	1002	FPP	PB-O3B	5.71	1.76	1.54
4	B	1002	FPP	PA-O2A	4.80	1.77	1.55
5	B	1003	ED1	CBS-CBP	-4.25	1.41	1.49
5	B	1003	ED1	CBM-NBV	3.22	1.40	1.35
5	B	1003	ED1	OBK-CBZ	-2.43	1.44	1.48
5	B	1003	ED1	CAY-CBO	2.27	1.43	1.39
4	B	1002	FPP	PA-O1A	2.25	1.58	1.50
4	B	1002	FPP	PB-O1B	2.15	1.57	1.50

All (36) bond angle outliers are listed below:

Mol	Chain	Res	Type	Atoms	Z	Observed(°)	Ideal(°)
5	B	1003	ED1	CBA-CAZ-CBL	-10.56	94.96	112.67
5	B	1003	ED1	OAH-SCA-NBX	9.63	115.47	106.69
5	B	1003	ED1	CBF-CBG-NBX	8.27	126.53	112.48
5	B	1003	ED1	CBA-CBO-CAO	-7.50	102.26	121.23
5	B	1003	ED1	CBA-CBO-CAY	6.39	131.03	120.54
5	B	1003	ED1	OAI-SCA-NBX	6.34	112.47	106.69
5	B	1003	ED1	OBK-CBM-NBV	6.21	119.17	111.01
5	B	1003	ED1	CAN-CAP-CBP	6.01	128.11	120.56
5	B	1003	ED1	CAO-CBO-CAY	5.81	126.67	118.54
5	B	1003	ED1	OAH-SCA-OAI	-5.30	110.93	119.52
5	B	1003	ED1	CBP-CAY-CBO	-5.28	113.99	121.19
5	B	1003	ED1	CAZ-CBA-CBO	5.12	131.28	113.28
5	B	1003	ED1	OAH-SCA-CBT	-5.03	97.61	107.36
5	B	1003	ED1	CAT-CBT-CBS	-5.00	116.11	121.89
5	B	1003	ED1	CAY-CBP-CBS	4.87	128.68	120.61

Continued on next page...

Continued from previous page...

Mol	Chain	Res	Type	Atoms	Z	Observed(°)	Ideal(°)
5	B	1003	ED1	OBK-CBM-OAG	-4.79	118.53	126.40
5	B	1003	ED1	OAI-SCA-CBT	4.43	115.94	107.36
5	B	1003	ED1	CAL-CAS-CBS	4.40	127.77	120.33
5	B	1003	ED1	CAM-CAL-CAS	-4.05	114.02	120.19
4	B	1002	FPP	PA-O3A-PB	-3.94	119.31	132.83
5	B	1003	ED1	CAP-CBP-CBS	-3.83	114.70	120.91
5	B	1003	ED1	CBH-CBR-CAW	-3.77	124.41	129.46
5	B	1003	ED1	CBS-CBT-SCA	3.77	127.16	122.66
5	B	1003	ED1	CAM-CAT-CBT	3.66	125.44	118.78
5	B	1003	ED1	CBH-NBW-CBQ	-3.42	114.90	120.78
5	B	1003	ED1	CAO-CAN-CAP	-3.29	115.57	120.25
5	B	1003	ED1	CBI-NBX-SCA	-3.08	110.77	117.52
5	B	1003	ED1	CBB-CBD-NBV	3.03	115.42	110.82
5	B	1003	ED1	CBD-NBV-CBM	-3.00	113.18	121.77
5	B	1003	ED1	CBE-NBV-CBM	-2.89	113.50	121.77
4	B	1002	FPP	C6-C7-C8	-2.84	120.81	127.66
5	B	1003	ED1	CBG-CBF-NBW	-2.83	99.57	114.42
5	B	1003	ED1	CBF-NBW-CBQ	-2.81	116.87	121.18
5	B	1003	ED1	CBC-CBE-NBV	2.28	114.29	110.82
5	B	1003	ED1	NBJ-CAX-NBY	-2.15	109.07	112.26
5	B	1003	ED1	CAA-NBY-CBR	2.06	127.19	124.44

There are no chirality outliers.

All (25) torsion outliers are listed below:

Mol	Chain	Res	Type	Atoms
4	B	1002	FPP	C1-O1-PA-O1A
5	B	1003	ED1	CBF-CBG-NBX-SCA
5	B	1003	ED1	CBU-CBI-NBX-CBG
5	B	1003	ED1	CAT-CBT-SCA-NBX
5	B	1003	ED1	CBS-CBT-SCA-NBX
5	B	1003	ED1	CAY-CBP-CBS-CBT
5	B	1003	ED1	CAP-CBP-CBS-CBT
5	B	1003	ED1	CBL-CAZ-CBA-CBO
5	B	1003	ED1	CAY-CBP-CBS-CAS
5	B	1003	ED1	CAP-CBP-CBS-CAS
4	B	1002	FPP	C4-C3-C5-C6
4	B	1002	FPP	C10-C8-C9-C11
4	B	1002	FPP	C7-C8-C9-C11
4	B	1002	FPP	C2-C3-C5-C6
5	B	1003	ED1	CBG-NBX-SCA-OAI
4	B	1002	FPP	C1-O1-PA-O3A

Continued on next page...

Continued from previous page...

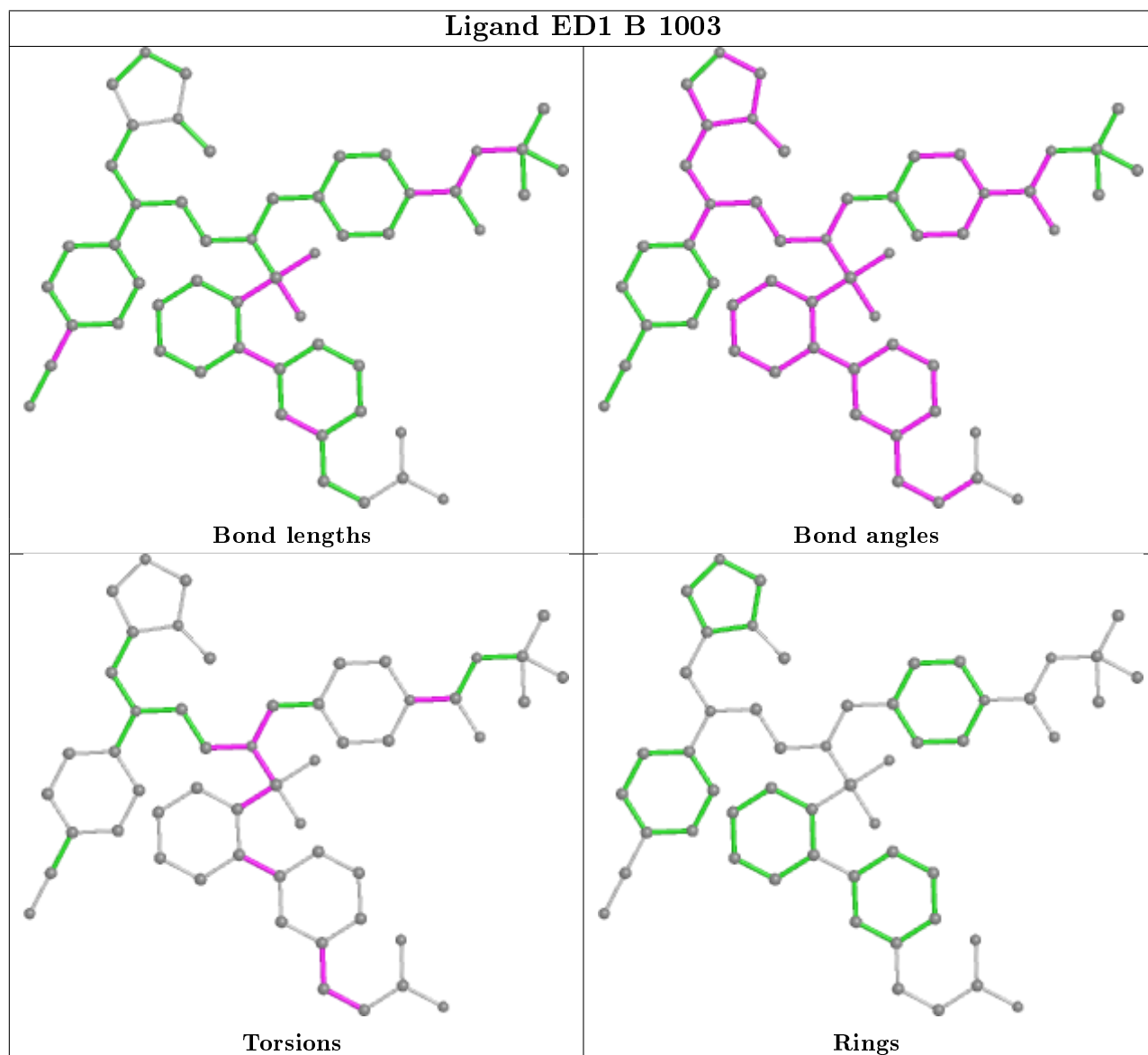
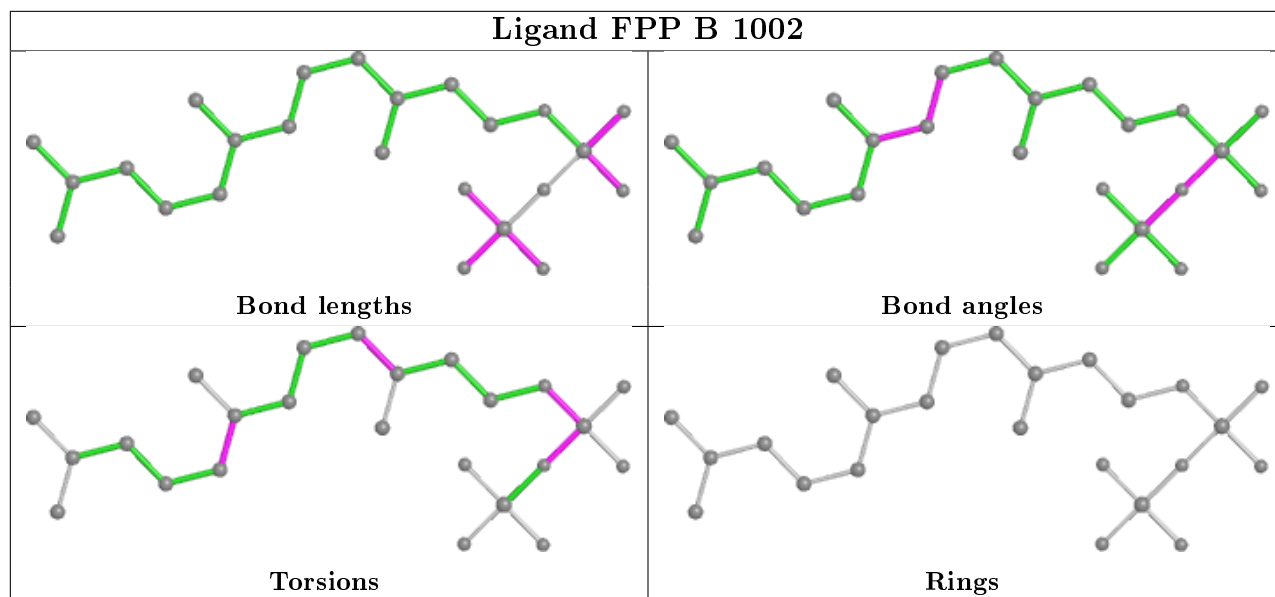
Mol	Chain	Res	Type	Atoms
5	B	1003	ED1	CBG-NBX-SCA-OAH
4	B	1002	FPP	C1-O1-PA-O2A
5	B	1003	ED1	CBI-NBX-SCA-OAH
5	B	1003	ED1	CBI-NBX-SCA-CBT
5	B	1003	ED1	CBI-NBX-SCA-OAI
5	B	1003	ED1	CAZ-CBA-CBO-CAO
5	B	1003	ED1	OAG-CBM-NBV-CBD
4	B	1002	FPP	PB-O3A-PA-O1A
5	B	1003	ED1	CAZ-CBA-CBO-CAY

There are no ring outliers.

2 monomers are involved in 19 short contacts:

Mol	Chain	Res	Type	Clashes	Symm-Clashes
4	B	1002	FPP	2	0
5	B	1003	ED1	17	0

The following is a two-dimensional graphical depiction of Mogul quality analysis of bond lengths, bond angles, torsion angles, and ring geometry for all instances of the Ligand of Interest. In addition, ligands with molecular weight > 250 and outliers as shown on the validation Tables will also be included. For torsion angles, if less than 5% of the Mogul distribution of torsion angles is within 10 degrees of the torsion angle in question, then that torsion angle is considered an outlier. Any bond that is central to one or more torsion angles identified as an outlier by Mogul will be highlighted in the graph. For rings, the root-mean-square deviation (RMSD) between the ring in question and similar rings identified by Mogul is calculated over all ring torsion angles. If the average RMSD is greater than 60 degrees and the minimal RMSD between the ring in question and any Mogul-identified rings is also greater than 60 degrees, then that ring is considered an outlier. The outliers are highlighted in purple. The color gray indicates Mogul did not find sufficient equivalents in the CSD to analyse the geometry.



5.7 Other polymers [i](#)

There are no such residues in this entry.

5.8 Polymer linkage issues [i](#)

There are no chain breaks in this entry.

6 Fit of model and data

6.1 Protein, DNA and RNA chains

In the following table, the column labelled ‘#RSRZ> 2’ contains the number (and percentage) of RSRZ outliers, followed by percent RSRZ outliers for the chain as percentile scores relative to all X-ray entries and entries of similar resolution. The OWAB column contains the minimum, median, 95th percentile and maximum values of the occupancy-weighted average B-factor per residue. The column labelled ‘Q< 0.9’ lists the number of (and percentage) of residues with an average occupancy less than 0.9.

Mol	Chain	Analysed	<RSRZ>	#RSRZ>2	OWAB(Å ²)	Q<0.9
1	A	323/377 (85%)	0.06	16 (4%) 28 31	11, 25, 48, 59	0
2	B	407/437 (93%)	0.04	17 (4%) 36 39	13, 22, 39, 57	0
All	All	730/814 (89%)	0.05	33 (4%) 33 35	11, 23, 42, 59	0

All (33) RSRZ outliers are listed below:

Mol	Chain	Res	Type	RSRZ
2	B	380	ALA	6.4
2	B	19	TRP	6.3
1	A	375	ALA	6.1
1	A	371	SER	5.6
2	B	64	PHE	5.4
2	B	17	PRO	4.3
1	A	305	SER	4.1
2	B	422	GLY	4.1
1	A	373	ILE	4.1
1	A	372	ASP	4.0
2	B	381	MET	4.0
2	B	20	SER	3.8
2	B	423	PHE	3.8
1	A	55	PHE	3.8
1	A	326	GLN	3.5
1	A	374	PRO	3.4
1	A	377	VAL	3.3
2	B	319	GLY	3.1
2	B	70	ARG	3.1
2	B	417	GLN	3.0
2	B	121	ILE	2.9
2	B	379	GLY	2.9
1	A	376	SER	2.6
1	A	84	PRO	2.6

Continued on next page...

Continued from previous page...

Mol	Chain	Res	Type	RSRZ
1	A	364	GLN	2.5
1	A	304	PRO	2.4
2	B	32	ARG	2.3
2	B	266	ARG	2.3
1	A	286	ASP	2.3
1	A	59	ASP	2.1
2	B	18	VAL	2.1
1	A	328	ASP	2.1
2	B	325	MET	2.0

6.2 Non-standard residues in protein, DNA, RNA chains [\(i\)](#)

There are no non-standard protein/DNA/RNA residues in this entry.

6.3 Carbohydrates [\(i\)](#)

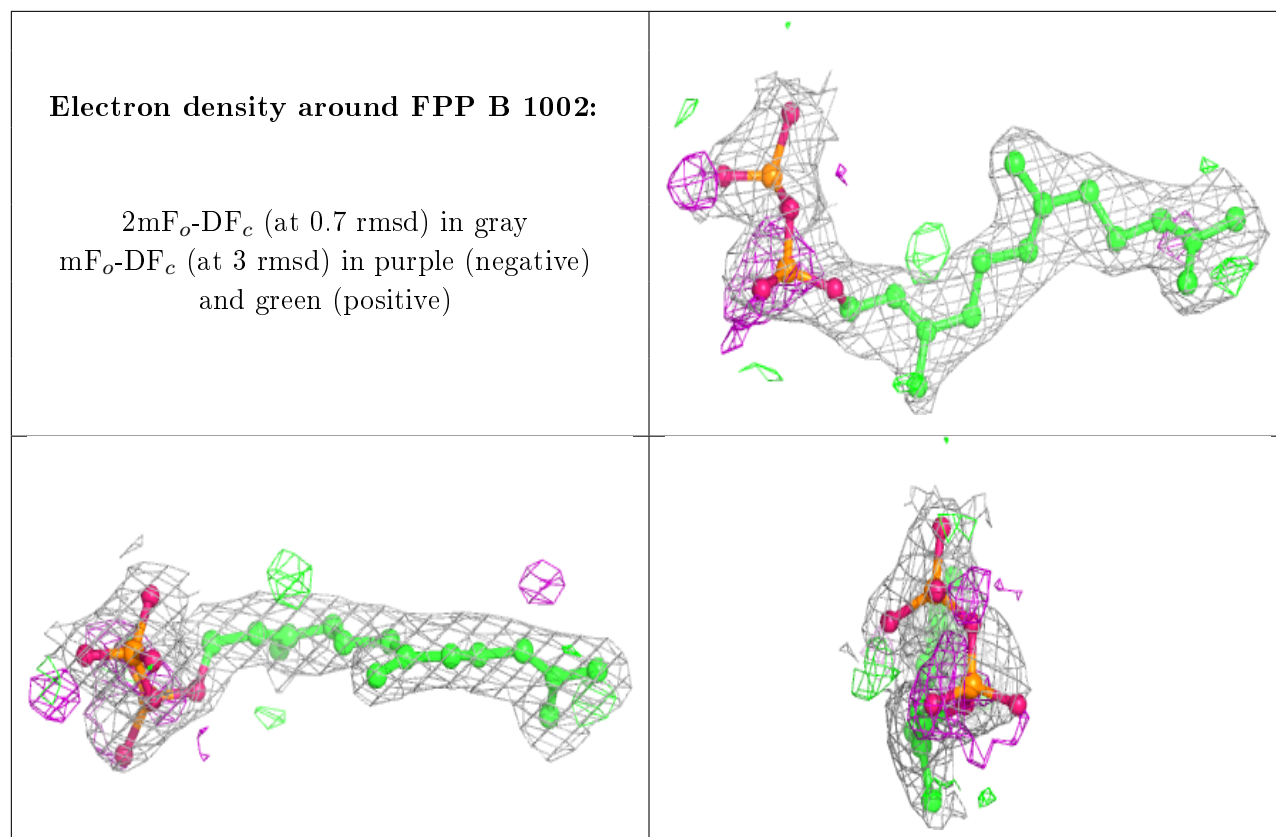
There are no carbohydrates in this entry.

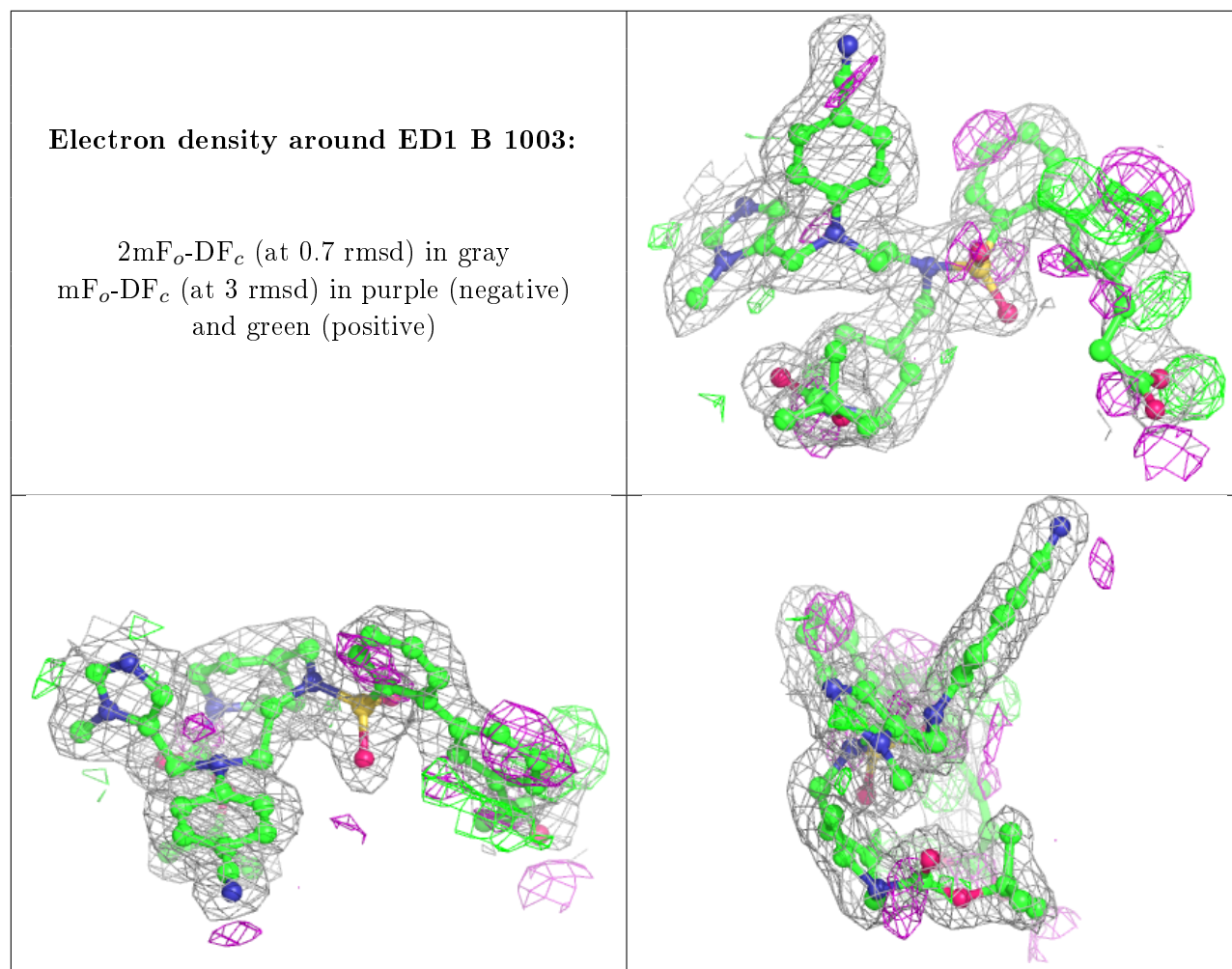
6.4 Ligands [\(i\)](#)

In the following table, the Atoms column lists the number of modelled atoms in the group and the number defined in the chemical component dictionary. The B-factors column lists the minimum, median, 95th percentile and maximum values of B factors of atoms in the group. The column labelled 'Q< 0.9' lists the number of atoms with occupancy less than 0.9.

Mol	Type	Chain	Res	Atoms	RSCC	RSR	B-factors(\AA^2)	Q<0.9
4	FPP	B	1002	24/24	0.88	0.20	22,26,38,40	0
5	ED1	B	1003	53/53	0.89	0.16	15,29,49,50	0
3	ZN	B	1001	1/1	1.00	0.08	17,17,17,17	0

The following is a graphical depiction of the model fit to experimental electron density of all instances of the Ligand of Interest. In addition, ligands with molecular weight > 250 and outliers as shown on the geometry validation Tables will also be included. Each fit is shown from different orientation to approximate a three-dimensional view.





6.5 Other polymers [i](#)

There are no such residues in this entry.