



Full wwPDB X-ray Structure Validation Report ⓘ

Jun 23, 2024 – 09:11 AM EDT

PDB ID : 6E44
Title : CRYSTAL STRUCTURE OF HUMAN INDOLEAMINE 2,3-DIOXYGENASE 1 (IDO1) free enzyme in the ferric state
Authors : Luo, S.; Tong, L.
Deposited on : 2018-07-16
Resolution : 1.90 Å(reported)

This is a Full wwPDB X-ray Structure Validation Report for a publicly released PDB entry.

We welcome your comments at validation@mail.wwpdb.org

A user guide is available at

<https://www.wwpdb.org/validation/2017/XrayValidationReportHelp>

with specific help available everywhere you see the ⓘ symbol.

The types of validation reports are described at

<http://www.wwpdb.org/validation/2017/FAQs#types>.

The following versions of software and data (see [references ⓘ](#)) were used in the production of this report:

MolProbity : 4.02b-467
Mogul : 2022.3.0, CSD as543be (2022)
Xtrriage (Phenix) : 1.20.1
EDS : 2.37.1
buster-report : 1.1.7 (2018)
Percentile statistics : 20191225.v01 (using entries in the PDB archive December 25th 2019)
Refmac : 5.8.0158
CCP4 : 7.0.044 (Gargrove)
Ideal geometry (proteins) : Engh & Huber (2001)
Ideal geometry (DNA, RNA) : Parkinson et al. (1996)
Validation Pipeline (wwPDB-VP) : 2.37.1

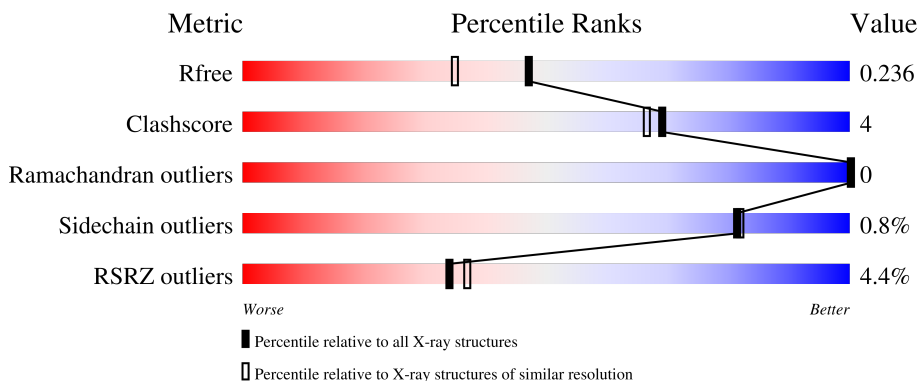
1 Overall quality at a glance

The following experimental techniques were used to determine the structure:

X-RAY DIFFRACTION

The reported resolution of this entry is 1.90 Å.

Percentile scores (ranging between 0-100) for global validation metrics of the entry are shown in the following graphic. The table shows the number of entries on which the scores are based.



Metric	Whole archive (#Entries)	Similar resolution (#Entries, resolution range(Å))
R_{free}	130704	6207 (1.90-1.90)
Clashscore	141614	6847 (1.90-1.90)
Ramachandran outliers	138981	6760 (1.90-1.90)
Sidechain outliers	138945	6760 (1.90-1.90)
RSRZ outliers	127900	6082 (1.90-1.90)

The table below summarises the geometric issues observed across the polymeric chains and their fit to the electron density. The red, orange, yellow and green segments of the lower bar indicate the fraction of residues that contain outliers for ≥ 3 , 2, 1 and 0 types of geometric quality criteria respectively. A grey segment represents the fraction of residues that are not modelled. The numeric value for each fraction is indicated below the corresponding segment, with a dot representing fractions $\leq 5\%$. The upper red bar (where present) indicates the fraction of residues that have poor fit to the electron density. The numeric value is given above the bar.

Mol	Chain	Length	Quality of chain
1	A	405	 5% 80% 10% 9%
1	B	405	 4% 85% 8% 7%
1	C	405	 2% 83% 8% 9%
1	D	405	 5% 83% 7% 9%

2 Entry composition

There are 4 unique types of molecules in this entry. The entry contains 12847 atoms, of which 0 are hydrogens and 0 are deuteriums.

In the tables below, the ZeroOcc column contains the number of atoms modelled with zero occupancy, the AltConf column contains the number of residues with at least one atom in alternate conformation and the Trace column contains the number of residues modelled with at most 2 atoms.

- Molecule 1 is a protein called Indoleamine 2,3-dioxygenase 1.

Mol	Chain	Residues	Atoms					ZeroOcc	AltConf	Trace
			Total	C	N	O	S			
1	A	368	2917	1877	496	527	17	0	1	0
1	B	375	2963	1905	504	537	17	0	1	0
1	C	368	2927	1884	496	529	18	0	2	0
1	D	369	2915	1875	497	526	17	0	0	0

There are 72 discrepancies between the modelled and reference sequences:

Chain	Residue	Modelled	Actual	Comment	Reference
A	-1	MET	-	initiating methionine	UNP P14902
A	0	GLY	-	expression tag	UNP P14902
A	1	SER	-	expression tag	UNP P14902
A	2	SER	-	expression tag	UNP P14902
A	3	HIS	-	expression tag	UNP P14902
A	4	HIS	-	expression tag	UNP P14902
A	5	HIS	-	expression tag	UNP P14902
A	6	HIS	-	expression tag	UNP P14902
A	7	HIS	-	expression tag	UNP P14902
A	8	HIS	-	expression tag	UNP P14902
A	9	SER	-	expression tag	UNP P14902
A	10	SER	-	expression tag	UNP P14902
A	11	GLY	-	expression tag	UNP P14902
A	12	SER	-	expression tag	UNP P14902
A	13	ALA	-	expression tag	UNP P14902
A	14	ALA	-	expression tag	UNP P14902
A	116	ALA	LYS	engineered mutation	UNP P14902
A	117	ALA	LYS	engineered mutation	UNP P14902
B	-1	MET	-	initiating methionine	UNP P14902
B	0	GLY	-	expression tag	UNP P14902
B	1	SER	-	expression tag	UNP P14902

Continued on next page...

Continued from previous page...

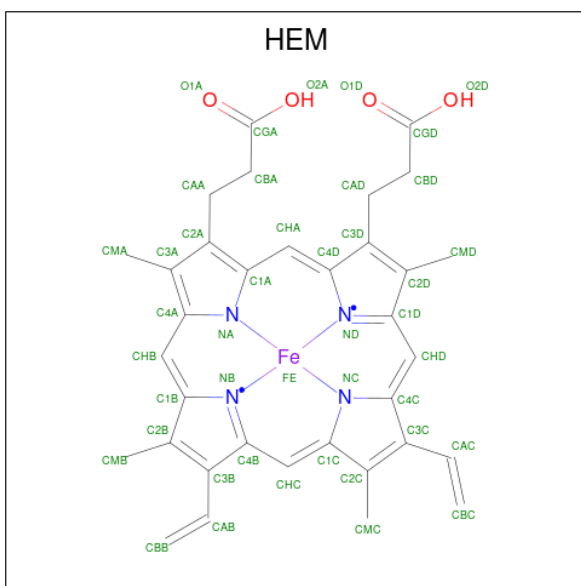
Chain	Residue	Modelled	Actual	Comment	Reference
B	2	SER	-	expression tag	UNP P14902
B	3	HIS	-	expression tag	UNP P14902
B	4	HIS	-	expression tag	UNP P14902
B	5	HIS	-	expression tag	UNP P14902
B	6	HIS	-	expression tag	UNP P14902
B	7	HIS	-	expression tag	UNP P14902
B	8	HIS	-	expression tag	UNP P14902
B	9	SER	-	expression tag	UNP P14902
B	10	SER	-	expression tag	UNP P14902
B	11	GLY	-	expression tag	UNP P14902
B	12	SER	-	expression tag	UNP P14902
B	13	ALA	-	expression tag	UNP P14902
B	14	ALA	-	expression tag	UNP P14902
B	116	ALA	LYS	engineered mutation	UNP P14902
B	117	ALA	LYS	engineered mutation	UNP P14902
C	-1	MET	-	initiating methionine	UNP P14902
C	0	GLY	-	expression tag	UNP P14902
C	1	SER	-	expression tag	UNP P14902
C	2	SER	-	expression tag	UNP P14902
C	3	HIS	-	expression tag	UNP P14902
C	4	HIS	-	expression tag	UNP P14902
C	5	HIS	-	expression tag	UNP P14902
C	6	HIS	-	expression tag	UNP P14902
C	7	HIS	-	expression tag	UNP P14902
C	8	HIS	-	expression tag	UNP P14902
C	9	SER	-	expression tag	UNP P14902
C	10	SER	-	expression tag	UNP P14902
C	11	GLY	-	expression tag	UNP P14902
C	12	SER	-	expression tag	UNP P14902
C	13	ALA	-	expression tag	UNP P14902
C	14	ALA	-	expression tag	UNP P14902
C	116	ALA	LYS	engineered mutation	UNP P14902
C	117	ALA	LYS	engineered mutation	UNP P14902
D	-1	MET	-	initiating methionine	UNP P14902
D	0	GLY	-	expression tag	UNP P14902
D	1	SER	-	expression tag	UNP P14902
D	2	SER	-	expression tag	UNP P14902
D	3	HIS	-	expression tag	UNP P14902
D	4	HIS	-	expression tag	UNP P14902
D	5	HIS	-	expression tag	UNP P14902
D	6	HIS	-	expression tag	UNP P14902
D	7	HIS	-	expression tag	UNP P14902

Continued on next page...

Continued from previous page...

Chain	Residue	Modelled	Actual	Comment	Reference
D	8	HIS	-	expression tag	UNP P14902
D	9	SER	-	expression tag	UNP P14902
D	10	SER	-	expression tag	UNP P14902
D	11	GLY	-	expression tag	UNP P14902
D	12	SER	-	expression tag	UNP P14902
D	13	ALA	-	expression tag	UNP P14902
D	14	ALA	-	expression tag	UNP P14902
D	116	ALA	LYS	engineered mutation	UNP P14902
D	117	ALA	LYS	engineered mutation	UNP P14902

- Molecule 2 is PROTOPORPHYRIN IX CONTAINING FE (three-letter code: HEM) (formula: $C_{34}H_{32}FeN_4O_4$) (labeled as "Ligand of Interest" by depositor).



Mol	Chain	Residues	Atoms				ZeroOcc	AltConf	
2	A	1	Total	C	Fe	N	O	0	0
			43	34	1	4	4		
2	B	1	Total	C	Fe	N	O	0	0
			43	34	1	4	4		
2	C	1	Total	C	Fe	N	O	0	0
			43	34	1	4	4		
2	D	1	Total	C	Fe	N	O	0	0
			43	34	1	4	4		

- Molecule 3 is PHOSPHATE ION (three-letter code: PO4) (formula: O_4P).



Mol	Chain	Residues	Atoms	ZeroOcc	AltConf
3	B	1	Total O P 5 4 1	0	0
3	D	1	Total O P 5 4 1	0	0
3	D	1	Total O P 5 4 1	0	0

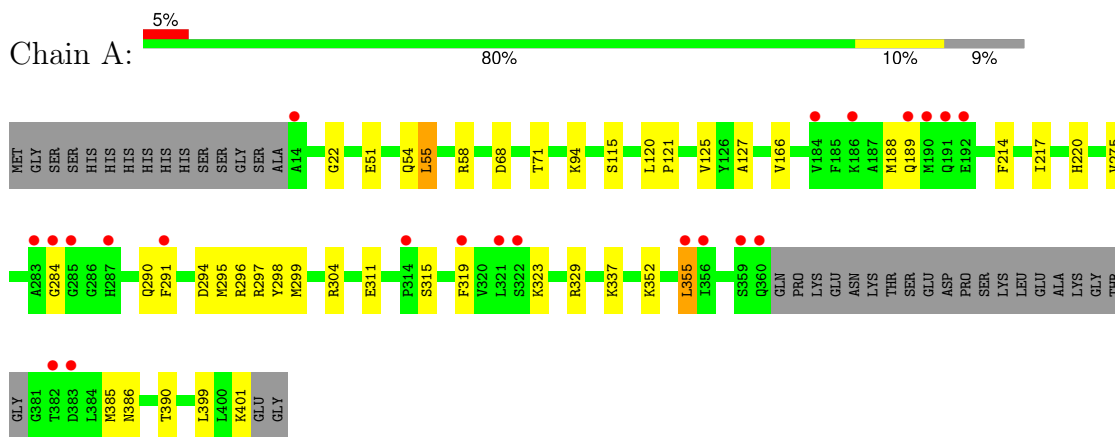
- Molecule 4 is water.

Mol	Chain	Residues	Atoms	ZeroOcc	AltConf
4	A	215	Total O 215 215	0	0
4	B	249	Total O 249 249	0	0
4	C	228	Total O 228 228	0	0
4	D	246	Total O 246 246	0	0

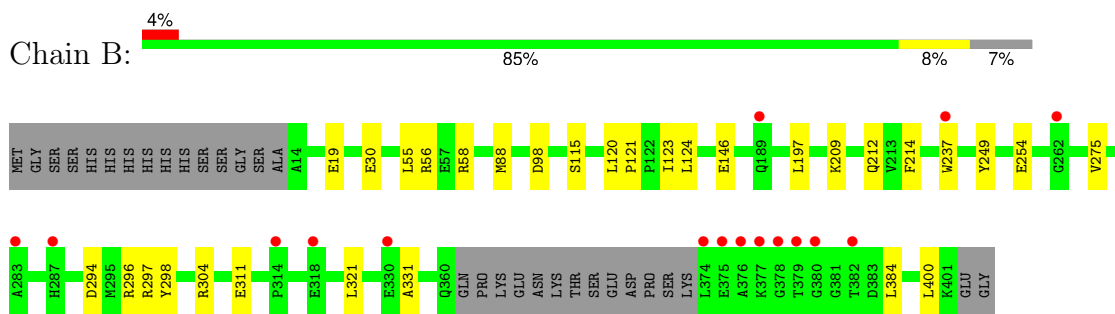
3 Residue-property plots [i](#)

These plots are drawn for all protein, RNA, DNA and oligosaccharide chains in the entry. The first graphic for a chain summarises the proportions of the various outlier classes displayed in the second graphic. The second graphic shows the sequence view annotated by issues in geometry and electron density. Residues are color-coded according to the number of geometric quality criteria for which they contain at least one outlier: green = 0, yellow = 1, orange = 2 and red = 3 or more. A red dot above a residue indicates a poor fit to the electron density ($RSRZ > 2$). Stretches of 2 or more consecutive residues without any outlier are shown as a green connector. Residues present in the sample, but not in the model, are shown in grey.

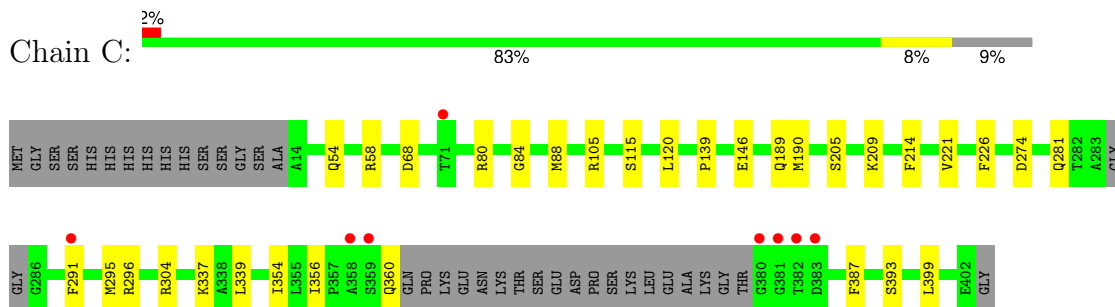
- Molecule 1: Indoleamine 2,3-dioxygenase 1



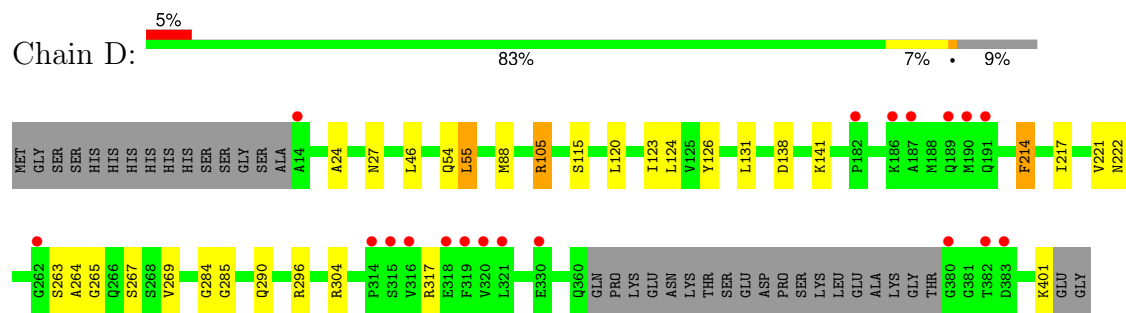
- Molecule 1: Indoleamine 2,3-dioxygenase 1



- Molecule 1: Indoleamine 2,3-dioxygenase 1



- Molecule 1: Indoleamine 2,3-dioxygenase 1



4 Data and refinement statistics

Property	Value	Source
Space group	P 21 21 2	Depositor
Cell constants a, b, c, α , β , γ	80.08Å 197.00Å 116.24Å 90.00° 90.00° 90.00°	Depositor
Resolution (Å)	47.04 – 1.90 47.04 – 1.90	Depositor EDS
% Data completeness (in resolution range)	99.2 (47.04-1.90) 99.2 (47.04-1.90)	Depositor EDS
R_{merge}	0.06	Depositor
R_{sym}	(Not available)	Depositor
$\langle I/\sigma(I) \rangle$ ¹	1.81 (at 1.91Å)	Xtrriage
Refinement program	PHENIX 1.12_2829	Depositor
R, R_{free}	0.194 , 0.235 0.196 , 0.236	Depositor DCC
R_{free} test set	2153 reflections (1.50%)	wwPDB-VP
Wilson B-factor (Å ²)	32.0	Xtrriage
Anisotropy	0.219	Xtrriage
Bulk solvent k_{sol} (e/Å ³), B_{sol} (Å ²)	0.37 , 47.0	EDS
L-test for twinning ²	$\langle L \rangle = 0.48$, $\langle L^2 \rangle = 0.32$	Xtrriage
Estimated twinning fraction	No twinning to report.	Xtrriage
F_o, F_c correlation	0.97	EDS
Total number of atoms	12847	wwPDB-VP
Average B, all atoms (Å ²)	35.0	wwPDB-VP

Xtrriage's analysis on translational NCS is as follows: *The analyses of the Patterson function reveals a significant off-origin peak that is 44.87 % of the origin peak, indicating pseudo-translational symmetry. The chance of finding a peak of this or larger height randomly in a structure without pseudo-translational symmetry is equal to 1.4342e-04. The detected translational NCS is most likely also responsible for the elevated intensity ratio.*

¹Intensities estimated from amplitudes.

²Theoretical values of $\langle |L| \rangle$, $\langle L^2 \rangle$ for acentric reflections are 0.5, 0.333 respectively for untwinned datasets, and 0.375, 0.2 for perfectly twinned datasets.

5 Model quality [i](#)

5.1 Standard geometry [i](#)

Bond lengths and bond angles in the following residue types are not validated in this section: PO4, HEM

The Z score for a bond length (or angle) is the number of standard deviations the observed value is removed from the expected value. A bond length (or angle) with $|Z| > 5$ is considered an outlier worth inspection. RMSZ is the root-mean-square of all Z scores of the bond lengths (or angles).

Mol	Chain	Bond lengths		Bond angles	
		RMSZ	# $ Z > 5$	RMSZ	# $ Z > 5$
1	A	0.51	1/2988 (0.0%)	0.56	2/4045 (0.0%)
1	B	0.38	0/3034	0.53	1/4106 (0.0%)
1	C	0.51	0/3000	0.57	1/4059 (0.0%)
1	D	0.51	1/2983 (0.0%)	0.56	2/4038 (0.0%)
All	All	0.48	2/12005 (0.0%)	0.55	6/16248 (0.0%)

All (2) bond length outliers are listed below:

Mol	Chain	Res	Type	Atoms	Z	Observed(Å)	Ideal(Å)
1	A	22	GLY	C-O	-5.56	1.14	1.23
1	D	214	PHE	CG-CD1	-5.08	1.31	1.38

All (6) bond angle outliers are listed below:

Mol	Chain	Res	Type	Atoms	Z	Observed(°)	Ideal(°)
1	D	55	LEU	CA-CB-CG	-6.78	99.71	115.30
1	A	55	LEU	CA-CB-CG	-6.51	100.32	115.30
1	B	55	LEU	CA-CB-CG	-6.39	100.60	115.30
1	A	355	LEU	CB-CG-CD1	-5.65	101.39	111.00
1	D	221	VAL	C-N-CA	-5.54	107.84	121.70
1	C	221	VAL	C-N-CA	-5.25	108.57	121.70

There are no chirality outliers.

There are no planarity outliers.

5.2 Too-close contacts [i](#)

In the following table, the Non-H and H(model) columns list the number of non-hydrogen atoms and hydrogen atoms in the chain respectively. The H(added) column lists the number of hydrogen

atoms added and optimized by MolProbity. The Clashes column lists the number of clashes within the asymmetric unit, whereas Symm-Clashes lists symmetry-related clashes.

Mol	Chain	Non-H	H(model)	H(added)	Clashes	Symm-Clashes
1	A	2917	0	2927	31	0
1	B	2963	0	2975	19	0
1	C	2927	0	2938	19	0
1	D	2915	0	2924	23	0
2	A	43	0	30	2	0
2	B	43	0	30	2	0
2	C	43	0	30	2	0
2	D	43	0	30	3	0
3	B	5	0	0	0	0
3	D	10	0	0	0	0
4	A	215	0	0	5	0
4	B	249	0	0	4	0
4	C	228	0	0	2	0
4	D	246	0	0	4	0
All	All	12847	0	11884	89	0

The all-atom clashscore is defined as the number of clashes found per 1000 atoms (including hydrogen atoms). The all-atom clashscore for this structure is 4.

All (89) close contacts within the same asymmetric unit are listed below, sorted by their clash magnitude.

Atom-1	Atom-2	Interatomic distance (Å)	Clash overlap (Å)
1:B:56:ARG:NH2	1:B:98:ASP:O	2.14	0.78
1:A:352:LYS:NZ	4:A:602:HOH:O	2.19	0.75
1:C:295[A]:MET:SD	4:C:659:HOH:O	2.47	0.73
1:C:146:GLU:HG2	1:D:222:ASN:HB2	1.73	0.70
1:B:212:GLN:NE2	4:B:602:HOH:O	2.25	0.70
1:C:146:GLU:HG2	1:D:222:ASN:CB	2.21	0.70
1:A:295:MET:HE1	2:A:501:HEM:HAD2	1.77	0.67
1:B:294:ASP:OD1	1:B:297:ARG:NH2	2.30	0.64
1:A:294:ASP:OD1	1:A:297:ARG:NH2	2.30	0.63
1:A:386:ASN:O	1:A:390:THR:HG23	1.99	0.62
1:B:209:LYS:NZ	4:B:605:HOH:O	2.32	0.61
2:D:501:HEM:HBB2	2:D:501:HEM:HMB2	1.83	0.61
1:A:71:THR:HB	1:D:54:GLN:HG2	1.83	0.61
1:A:355:LEU:HD11	1:A:385:MET:CG	2.30	0.60
1:D:105:ARG:HD2	4:D:763:HOH:O	2.01	0.59
1:D:317:ARG:NH1	4:D:603:HOH:O	2.35	0.59
1:C:356:ILE:O	1:C:360:GLN:HG3	2.05	0.57

Continued on next page...

Continued from previous page...

Atom-1	Atom-2	Interatomic distance (Å)	Clash overlap (Å)
1:A:355:LEU:HD11	1:A:385:MET:HG3	1.87	0.57
1:B:88:MET:HE3	1:B:124:LEU:H	1.71	0.56
1:D:88:MET:HE1	1:D:123:ILE:HG13	1.87	0.56
1:A:295:MET:CE	2:A:501:HEM:HAD2	2.35	0.56
1:A:329:ARG:HE	1:A:401:LYS:HE2	1.72	0.55
1:A:291:PHE:HE1	1:A:295:MET:HE2	1.72	0.54
1:A:275:VAL:HG13	1:A:311:GLU:HG3	1.90	0.54
2:B:501:HEM:HMB2	2:B:501:HEM:HBB2	1.90	0.53
1:A:51:GLU:O	1:A:94:LYS:NZ	2.42	0.53
1:B:237:TRP:HZ2	1:B:249:TYR:HH	1.57	0.53
1:C:274:ASP:OD2	1:C:281:GLN:HG3	2.09	0.52
1:A:220:HIS:HE1	4:A:765:HOH:O	1.92	0.52
1:B:58:ARG:HH22	1:C:139:PRO:HD2	1.75	0.52
1:A:68:ASP:OD1	4:A:601:HOH:O	2.19	0.51
1:B:30[B]:GLU:HG3	4:B:672:HOH:O	2.10	0.51
1:C:54:GLN:OE1	1:C:58:ARG:NH1	2.43	0.51
1:B:254:GLU:HG2	4:B:659:HOH:O	2.11	0.51
1:A:55:LEU:O	1:A:55:LEU:HG	2.06	0.50
1:A:337:LYS:HG3	1:A:399:LEU:HD21	1.91	0.50
1:A:291:PHE:HE1	1:A:295:MET:CE	2.24	0.50
1:D:88:MET:HE3	1:D:124:LEU:H	1.77	0.50
1:A:115:SER:HB3	1:A:120:LEU:O	2.12	0.49
1:B:115:SER:HB3	1:B:120:LEU:O	2.13	0.49
1:C:189:GLN:HG2	1:C:190:MET:HE2	1.94	0.49
1:C:205:SER:O	1:C:209:LYS:HG3	2.13	0.49
1:D:284:GLY:O	4:D:601:HOH:O	2.20	0.49
1:D:263:SER:OG	1:D:265:GLY:N	2.33	0.48
1:A:166:VAL:HG11	1:A:217:ILE:HG12	1.95	0.48
1:B:88:MET:HE3	1:B:123:ILE:HG13	1.96	0.48
1:C:337:LYS:HG3	1:C:399:LEU:HD21	1.96	0.48
1:D:265:GLY:HA2	2:D:501:HEM:C3D	2.49	0.47
1:C:68:ASP:OD2	4:C:601:HOH:O	2.20	0.47
1:C:146:GLU:HG2	1:D:222:ASN:HB3	1.97	0.47
1:D:126:TYR:CD1	1:D:264:ALA:HA	2.50	0.47
1:D:296:ARG:O	1:D:304:ARG:HD3	2.15	0.47
1:A:329:ARG:HE	1:A:401:LYS:CE	2.28	0.47
1:C:295[B]:MET:HE2	2:C:501:HEM:HAD2	1.97	0.47
1:C:296:ARG:O	1:C:304:ARG:HD3	2.15	0.47
1:D:24:ALA:HA	1:D:131:LEU:HD22	1.97	0.47
1:D:27:ASN:ND2	4:D:611:HOH:O	2.48	0.46
1:A:290:GLN:NE2	1:A:290:GLN:HA	2.31	0.45

Continued on next page...

Continued from previous page...

Atom-1	Atom-2	Interatomic distance (Å)	Clash overlap (Å)
1:C:291:PHE:HD1	1:C:387:PHE:CZ	2.35	0.44
1:D:285:GLY:O	1:D:290:GLN:NE2	2.50	0.44
1:A:125:VAL:HG13	1:A:127:ALA:H	1.82	0.44
1:A:189:GLN:NE2	4:A:615:HOH:O	2.51	0.44
1:A:284:GLY:O	4:A:603:HOH:O	2.21	0.43
1:D:115:SER:HB3	1:D:120:LEU:O	2.18	0.43
1:D:401:LYS:HA	1:D:401:LYS:HD3	1.88	0.43
1:C:115:SER:HB3	1:C:120:LEU:O	2.18	0.43
1:B:146:GLU:H	1:B:146:GLU:CD	2.21	0.43
1:B:321:LEU:HD21	1:B:400:LEU:HD22	2.01	0.43
1:C:295[B]:MET:CE	2:C:501:HEM:HAD2	2.48	0.43
1:A:125:VAL:CG2	1:A:298:TYR:HB3	2.49	0.43
1:A:54:GLN:O	1:A:58:ARG:HG2	2.19	0.42
1:A:319:PHE:O	1:A:323:LYS:HG2	2.19	0.42
1:B:296:ARG:O	1:B:304:ARG:HD3	2.19	0.42
1:D:217:ILE:HD13	2:D:501:HEM:HAB	2.01	0.42
1:B:197:LEU:HD22	1:B:331:ALA:HB2	2.01	0.42
1:C:84:GLY:O	1:C:88:MET:HG2	2.19	0.42
1:D:267:SER:OG	1:D:269:VAL:HG13	2.20	0.42
1:B:237:TRP:HZ2	1:B:249:TYR:OH	2.02	0.42
1:A:121:PRO:HG2	1:A:298:TYR:CD2	2.55	0.41
1:A:299:MET:O	1:A:304:ARG:NH1	2.53	0.41
1:B:275:VAL:HG13	1:B:311:GLU:HG3	2.01	0.41
1:A:296:ARG:O	1:A:304:ARG:HD3	2.19	0.41
1:B:384:LEU:HD11	2:B:501:HEM:HMA3	2.03	0.41
1:D:55:LEU:O	1:D:55:LEU:HG	2.07	0.41
1:C:226:PHE:HE2	1:C:354:ILE:HD11	1.85	0.41
1:A:188:MET:HE3	1:A:315:SER:O	2.21	0.41
1:B:121:PRO:HG2	1:B:298:TYR:CD2	2.56	0.41
1:D:138:ASP:OD2	1:D:141:LYS:HE2	2.20	0.40
1:D:46:LEU:HD12	1:D:46:LEU:HA	1.95	0.40

There are no symmetry-related clashes.

5.3 Torsion angles

5.3.1 Protein backbone

In the following table, the Percentiles column shows the percent Ramachandran outliers of the chain as a percentile score with respect to all X-ray entries followed by that with respect to entries of similar resolution.

The Analysed column shows the number of residues for which the backbone conformation was analysed, and the total number of residues.

Mol	Chain	Analysed	Favoured	Allowed	Outliers	Percentiles	
1	A	365/405 (90%)	355 (97%)	10 (3%)	0	100	100
1	B	372/405 (92%)	365 (98%)	7 (2%)	0	100	100
1	C	364/405 (90%)	354 (97%)	10 (3%)	0	100	100
1	D	365/405 (90%)	358 (98%)	7 (2%)	0	100	100
All	All	1466/1620 (90%)	1432 (98%)	34 (2%)	0	100	100

There are no Ramachandran outliers to report.

5.3.2 Protein sidechains [i](#)

In the following table, the Percentiles column shows the percent sidechain outliers of the chain as a percentile score with respect to all X-ray entries followed by that with respect to entries of similar resolution.

The Analysed column shows the number of residues for which the sidechain conformation was analysed, and the total number of residues.

Mol	Chain	Analysed	Rotameric	Outliers	Percentiles	
1	A	317/346 (92%)	316 (100%)	1 (0%)	92	93
1	B	321/346 (93%)	319 (99%)	2 (1%)	86	87
1	C	319/346 (92%)	314 (98%)	5 (2%)	62	60
1	D	316/346 (91%)	314 (99%)	2 (1%)	86	87
All	All	1273/1384 (92%)	1263 (99%)	10 (1%)	81	82

All (10) residues with a non-rotameric sidechain are listed below:

Mol	Chain	Res	Type
1	A	214	PHE
1	B	19	GLU
1	B	214	PHE
1	C	80	ARG
1	C	105	ARG
1	C	214	PHE
1	C	339	LEU
1	C	393	SER
1	D	105	ARG
1	D	214	PHE

Sometimes sidechains can be flipped to improve hydrogen bonding and reduce clashes. All (7) such sidechains are listed below:

Mol	Chain	Res	Type
1	A	76	GLN
1	A	220	HIS
1	A	290	GLN
1	B	76	GLN
1	B	222	ASN
1	D	290	GLN
1	D	360	GLN

5.3.3 RNA [i](#)

There are no RNA molecules in this entry.

5.4 Non-standard residues in protein, DNA, RNA chains [i](#)

There are no non-standard protein/DNA/RNA residues in this entry.

5.5 Carbohydrates [i](#)

There are no monosaccharides in this entry.

5.6 Ligand geometry [i](#)

7 ligands are modelled in this entry.

In the following table, the Counts columns list the number of bonds (or angles) for which Mogul statistics could be retrieved, the number of bonds (or angles) that are observed in the model and the number of bonds (or angles) that are defined in the Chemical Component Dictionary. The Link column lists molecule types, if any, to which the group is linked. The Z score for a bond length (or angle) is the number of standard deviations the observed value is removed from the expected value. A bond length (or angle) with $|Z| > 2$ is considered an outlier worth inspection. RMSZ is the root-mean-square of all Z scores of the bond lengths (or angles).

Mol	Type	Chain	Res	Link	Bond lengths			Bond angles		
					Counts	RMSZ	# Z > 2	Counts	RMSZ	# Z > 2
2	HEM	C	501	1	42,50,50	1.49	5 (11%)	46,82,82	1.44	9 (19%)
2	HEM	A	501	1	42,50,50	1.49	6 (14%)	46,82,82	1.44	8 (17%)
3	PO4	B	502	-	4,4,4	0.80	0	6,6,6	0.47	0
3	PO4	D	503	-	4,4,4	0.86	0	6,6,6	0.53	0

Mol	Type	Chain	Res	Link	Bond lengths			Bond angles		
					Counts	RMSZ	# Z > 2	Counts	RMSZ	# Z > 2
2	HEM	B	501	1	42,50,50	1.49	4 (9%)	46,82,82	1.33	5 (10%)
3	PO4	D	502	-	4,4,4	0.88	0	6,6,6	0.84	0
2	HEM	D	501	1	42,50,50	1.48	4 (9%)	46,82,82	1.35	5 (10%)

In the following table, the Chirals column lists the number of chiral outliers, the number of chiral centers analysed, the number of these observed in the model and the number defined in the Chemical Component Dictionary. Similar counts are reported in the Torsion and Rings columns. '-' means no outliers of that kind were identified.

Mol	Type	Chain	Res	Link	Chirals	Torsions	Rings
2	HEM	A	501	1	-	2/12/54/54	-
2	HEM	B	501	1	-	2/12/54/54	-
2	HEM	C	501	1	-	3/12/54/54	-
2	HEM	D	501	1	-	0/12/54/54	-

All (19) bond length outliers are listed below:

Mol	Chain	Res	Type	Atoms	Z	Observed(Å)	Ideal(Å)
2	D	501	HEM	C3C-C2C	-4.49	1.34	1.40
2	C	501	HEM	C3C-C2C	-4.35	1.34	1.40
2	A	501	HEM	C3C-C2C	-4.25	1.34	1.40
2	B	501	HEM	C3C-C2C	-4.19	1.34	1.40
2	B	501	HEM	C3C-CAC	3.50	1.55	1.47
2	D	501	HEM	C3C-CAC	3.43	1.55	1.47
2	C	501	HEM	C3C-CAC	3.34	1.55	1.47
2	A	501	HEM	C3C-CAC	3.26	1.55	1.47
2	C	501	HEM	CAB-C3B	3.06	1.55	1.47
2	A	501	HEM	CAB-C3B	2.97	1.55	1.47
2	B	501	HEM	CAB-C3B	2.92	1.55	1.47
2	D	501	HEM	CAB-C3B	2.91	1.55	1.47
2	D	501	HEM	C3C-C4C	2.80	1.45	1.41
2	B	501	HEM	C3C-C4C	2.63	1.45	1.41
2	A	501	HEM	CMB-C2B	2.22	1.55	1.50
2	A	501	HEM	C3C-C4C	2.16	1.44	1.41
2	C	501	HEM	C3C-C4C	2.12	1.44	1.41
2	A	501	HEM	CMD-C2D	2.09	1.55	1.50
2	C	501	HEM	CMD-C2D	2.02	1.54	1.50

All (27) bond angle outliers are listed below:

Mol	Chain	Res	Type	Atoms	Z	Observed(°)	Ideal(°)
2	D	501	HEM	CMA-C3A-C4A	-3.34	123.56	128.46
2	A	501	HEM	C4C-CHD-C1D	3.25	126.84	122.56
2	C	501	HEM	C3B-C2B-C1B	3.13	108.76	106.41
2	C	501	HEM	CBA-CAA-C2A	-3.08	107.36	112.54
2	B	501	HEM	CMA-C3A-C4A	-2.99	124.07	128.46
2	A	501	HEM	C1B-NB-C4B	2.83	108.56	105.21
2	B	501	HEM	C4C-CHD-C1D	2.81	126.26	122.56
2	D	501	HEM	C4C-CHD-C1D	2.60	125.99	122.56
2	A	501	HEM	C4A-C3A-C2A	2.58	108.79	107.00
2	D	501	HEM	CBA-CAA-C2A	-2.51	108.32	112.54
2	B	501	HEM	C4A-C3A-C2A	2.39	108.66	107.00
2	A	501	HEM	C4D-ND-C1D	2.32	107.95	105.21
2	C	501	HEM	CMB-C2B-C1B	-2.26	121.50	125.03
2	C	501	HEM	C4C-CHD-C1D	2.24	125.52	122.56
2	C	501	HEM	CAA-CBA-CGA	-2.19	107.94	113.83
2	D	501	HEM	C4A-C3A-C2A	2.18	108.52	107.00
2	C	501	HEM	CMA-C3A-C4A	-2.15	125.31	128.46
2	A	501	HEM	CMA-C3A-C4A	-2.15	125.31	128.46
2	C	501	HEM	C1B-NB-C4B	2.13	107.72	105.21
2	A	501	HEM	CBA-CAA-C2A	-2.12	108.98	112.54
2	D	501	HEM	CMC-C2C-C3C	2.11	128.90	124.68
2	A	501	HEM	C3D-C4D-ND	-2.10	107.86	110.17
2	B	501	HEM	CHB-C1B-NB	2.08	126.95	124.37
2	A	501	HEM	C3B-C2B-C1B	2.04	107.94	106.41
2	B	501	HEM	CMB-C2B-C1B	-2.04	121.85	125.03
2	C	501	HEM	C3D-C4D-ND	-2.03	107.94	110.17
2	C	501	HEM	C4D-ND-C1D	2.03	107.61	105.21

There are no chirality outliers.

All (7) torsion outliers are listed below:

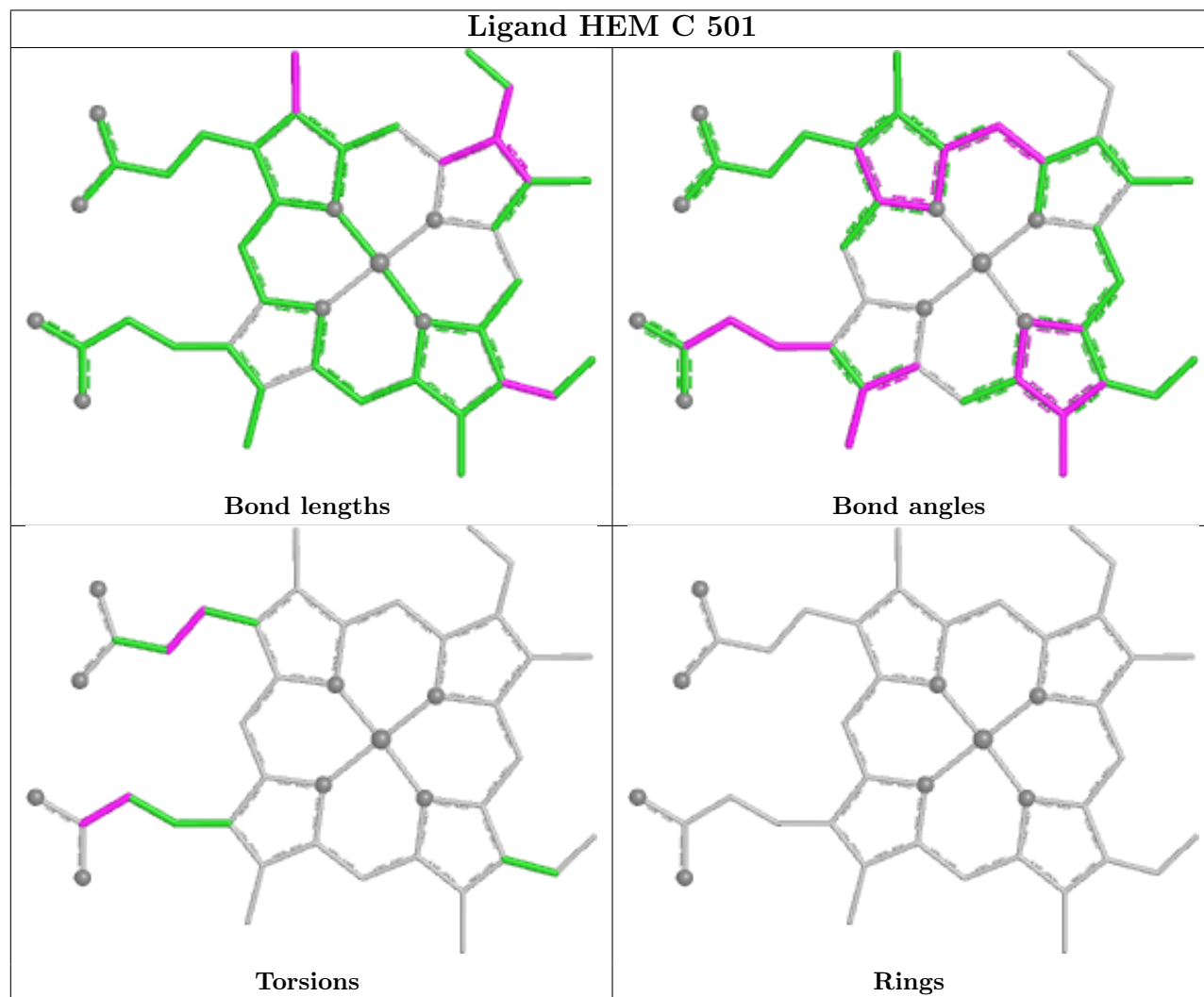
Mol	Chain	Res	Type	Atoms
2	C	501	HEM	C3D-CAD-CBD-CGD
2	C	501	HEM	CAA-CBA-CGA-O2A
2	B	501	HEM	CAA-CBA-CGA-O2A
2	A	501	HEM	CAA-CBA-CGA-O2A
2	C	501	HEM	CAA-CBA-CGA-O1A
2	A	501	HEM	CAA-CBA-CGA-O1A
2	B	501	HEM	CAA-CBA-CGA-O1A

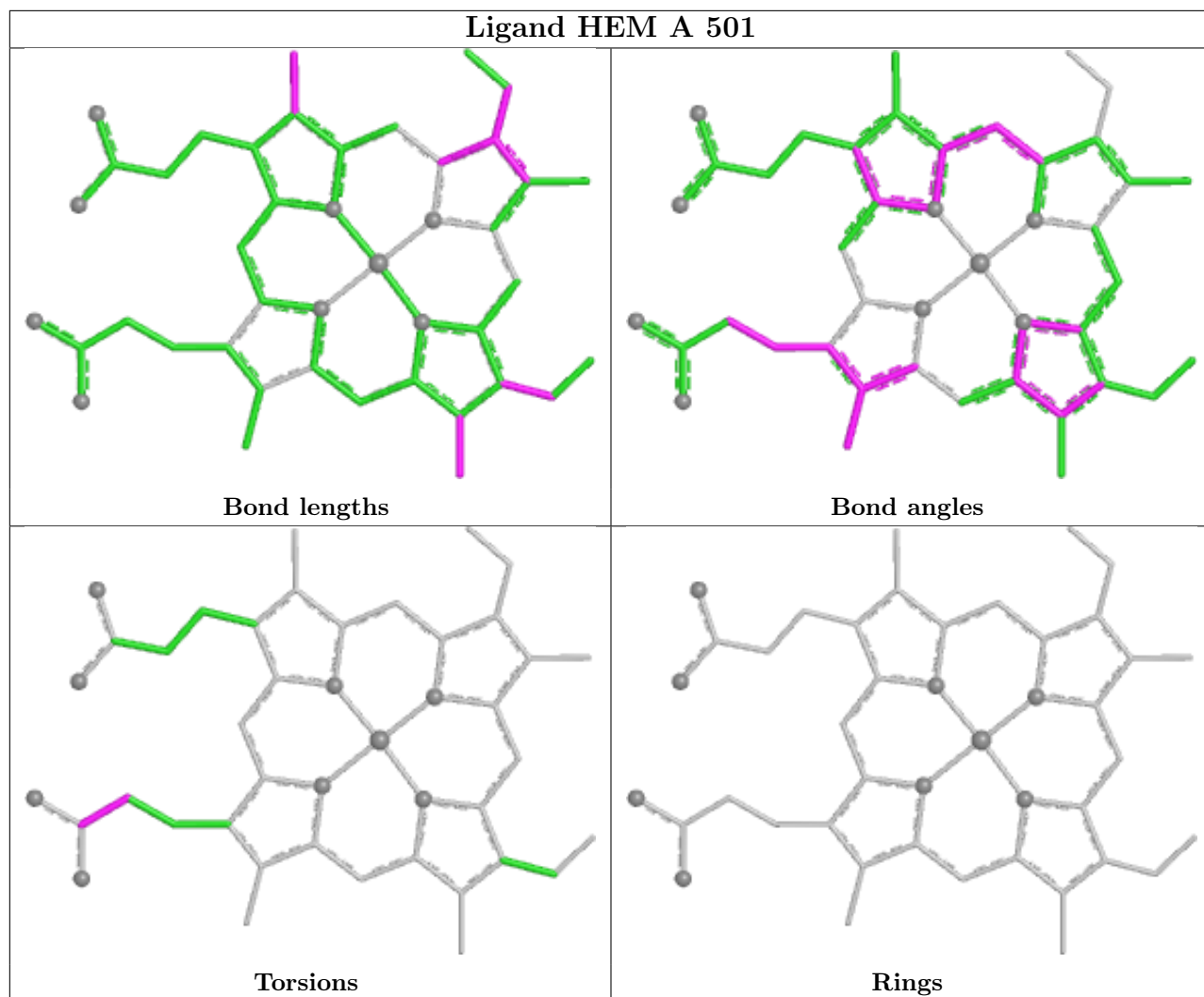
There are no ring outliers.

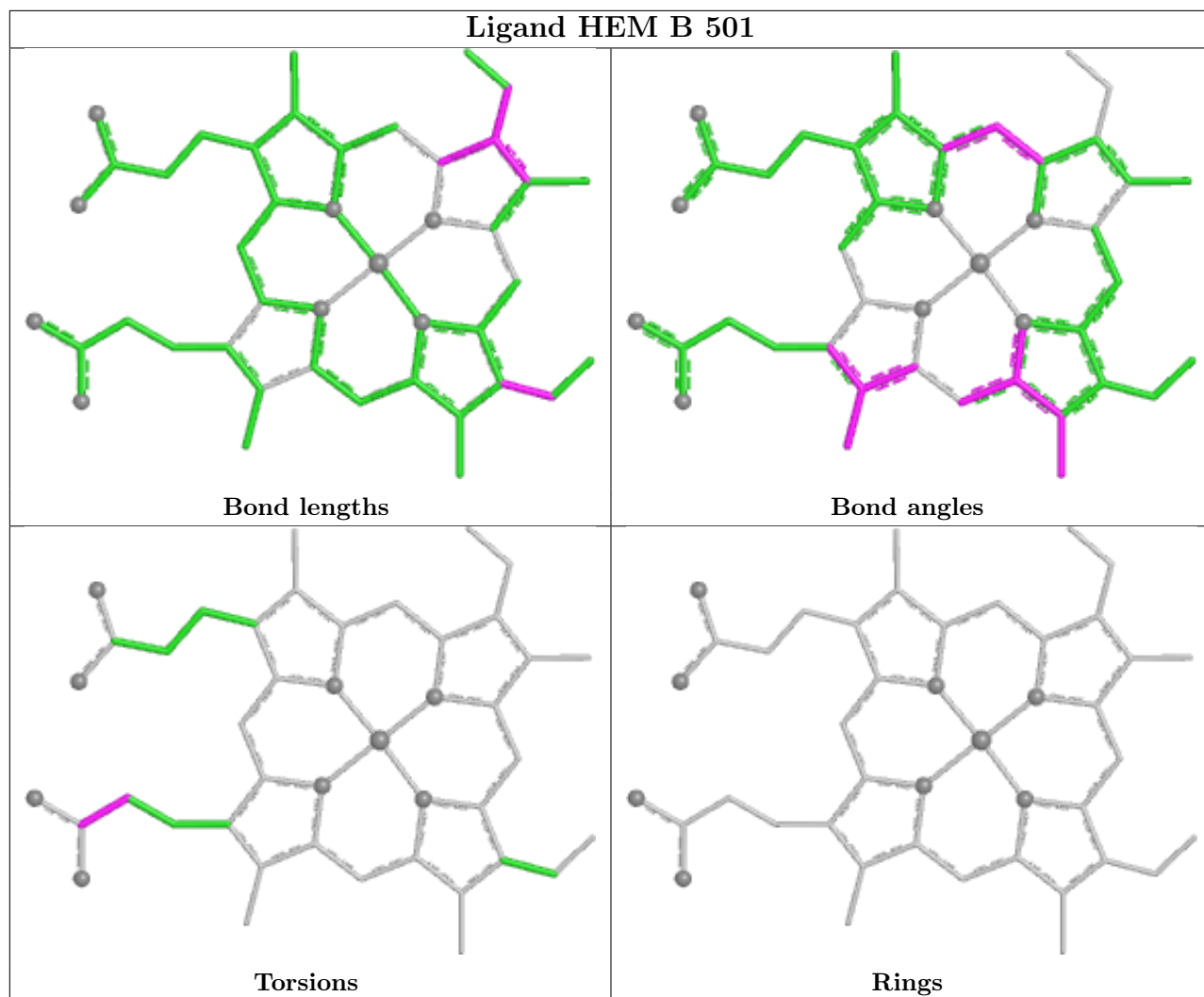
4 monomers are involved in 9 short contacts:

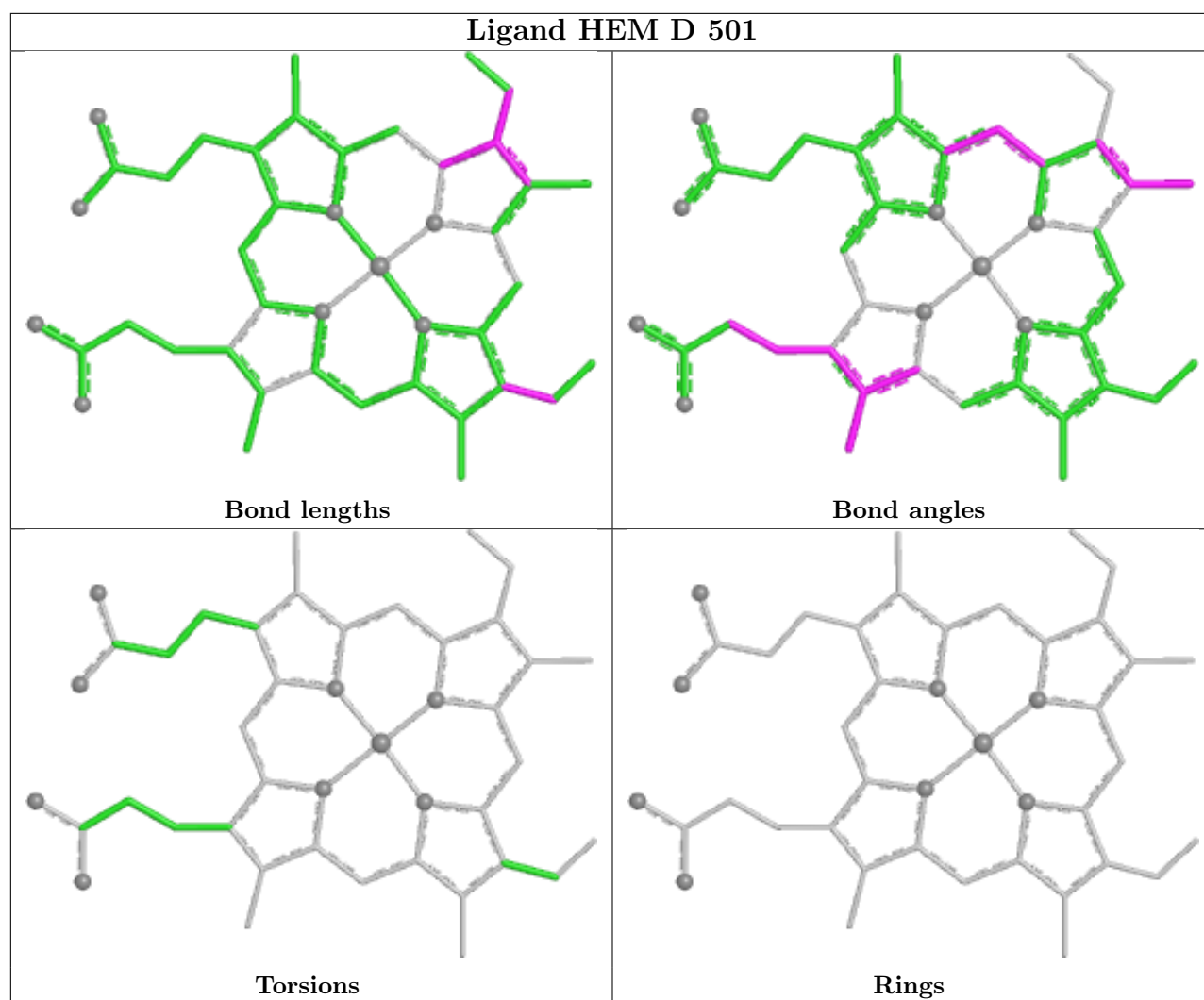
Mol	Chain	Res	Type	Clashes	Symm-Clashes
2	C	501	HEM	2	0
2	A	501	HEM	2	0
2	B	501	HEM	2	0
2	D	501	HEM	3	0

The following is a two-dimensional graphical depiction of Mogul quality analysis of bond lengths, bond angles, torsion angles, and ring geometry for all instances of the Ligand of Interest. In addition, ligands with molecular weight > 250 and outliers as shown on the validation Tables will also be included. For torsion angles, if less than 5% of the Mogul distribution of torsion angles is within 10 degrees of the torsion angle in question, then that torsion angle is considered an outlier. Any bond that is central to one or more torsion angles identified as an outlier by Mogul will be highlighted in the graph. For rings, the root-mean-square deviation (RMSD) between the ring in question and similar rings identified by Mogul is calculated over all ring torsion angles. If the average RMSD is greater than 60 degrees and the minimal RMSD between the ring in question and any Mogul-identified rings is also greater than 60 degrees, then that ring is considered an outlier. The outliers are highlighted in purple. The color gray indicates Mogul did not find sufficient equivalents in the CSD to analyse the geometry.









5.7 Other polymers [i](#)

There are no such residues in this entry.

5.8 Polymer linkage issues [i](#)

There are no chain breaks in this entry.

6 Fit of model and data

6.1 Protein, DNA and RNA chains

In the following table, the column labelled ‘#RSRZ > 2’ contains the number (and percentage) of RSRZ outliers, followed by percent RSRZ outliers for the chain as percentile scores relative to all X-ray entries and entries of similar resolution. The OWAB column contains the minimum, median, 95th percentile and maximum values of the occupancy-weighted average B-factor per residue. The column labelled ‘Q < 0.9’ lists the number of (and percentage) of residues with an average occupancy less than 0.9.

Mol	Chain	Analysed	<RSRZ>	#RSRZ>2	OWAB(Å ²)	Q<0.9
1	A	368/405 (90%)	0.44	22 (5%) 21 24	20, 36, 55, 72	0
1	B	375/405 (92%)	0.40	16 (4%) 35 38	20, 33, 53, 65	0
1	C	368/405 (90%)	0.27	8 (2%) 62 64	21, 33, 50, 72	0
1	D	369/405 (91%)	0.38	19 (5%) 28 31	20, 33, 51, 67	0
All	All	1480/1620 (91%)	0.37	65 (4%) 34 37	20, 33, 53, 72	0

All (65) RSRZ outliers are listed below:

Mol	Chain	Res	Type	RSRZ
1	B	379	THR	6.9
1	B	376	ALA	6.3
1	C	380	GLY	6.2
1	B	375	GLU	5.6
1	A	382	THR	4.6
1	B	380	GLY	4.6
1	C	359	SER	4.6
1	A	359	SER	4.5
1	A	287	HIS	4.5
1	A	189	GLN	4.5
1	D	380	GLY	4.3
1	D	314	PRO	4.2
1	B	377	LYS	4.1
1	B	378	GLY	4.1
1	D	189	GLN	4.0
1	C	381	GLY	3.9
1	B	374	LEU	3.8
1	C	382	THR	3.6
1	D	191	GLN	3.5
1	C	291	PHE	3.5
1	D	190	MET	3.4

Continued on next page...

Continued from previous page...

Mol	Chain	Res	Type	RSRZ
1	D	321	LEU	3.4
1	A	284	GLY	3.4
1	D	320	VAL	3.3
1	A	285	GLY	3.3
1	A	186	LYS	3.2
1	A	356	ILE	3.1
1	A	283	ALA	3.1
1	A	190	MET	3.0
1	D	319	PHE	2.9
1	D	187	ALA	2.9
1	D	318	GLU	2.9
1	A	355	LEU	2.9
1	B	287	HIS	2.8
1	D	382	THR	2.7
1	D	186	LYS	2.7
1	D	316	VAL	2.7
1	C	383	ASP	2.6
1	B	382	THR	2.6
1	D	182	PRO	2.6
1	A	14	ALA	2.5
1	B	318	GLU	2.5
1	A	360	GLN	2.5
1	B	262	GLY	2.5
1	A	383	ASP	2.5
1	A	291	PHE	2.4
1	D	383	ASP	2.4
1	A	319	PHE	2.3
1	D	262	GLY	2.3
1	D	14	ALA	2.3
1	A	314	PRO	2.3
1	C	71	THR	2.3
1	D	315	SER	2.2
1	B	189	GLN	2.2
1	C	358	ALA	2.2
1	A	191	GLN	2.2
1	B	283	ALA	2.1
1	A	321	LEU	2.1
1	B	237	TRP	2.1
1	A	192	GLU	2.1
1	A	322	SER	2.0
1	B	314	PRO	2.0
1	A	184	VAL	2.0

Continued on next page...

Continued from previous page...

Mol	Chain	Res	Type	RSRZ
1	B	330	GLU	2.0
1	D	330	GLU	2.0

6.2 Non-standard residues in protein, DNA, RNA chains [i](#)

There are no non-standard protein/DNA/RNA residues in this entry.

6.3 Carbohydrates [i](#)

There are no monosaccharides in this entry.

6.4 Ligands [i](#)

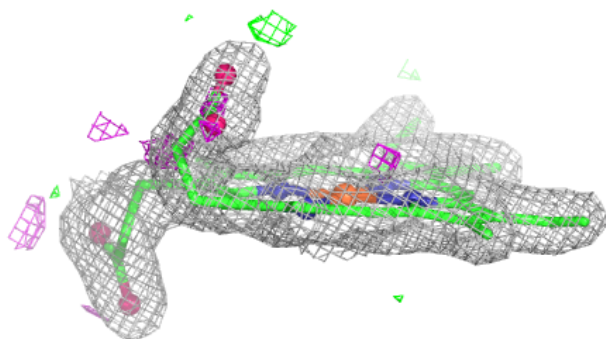
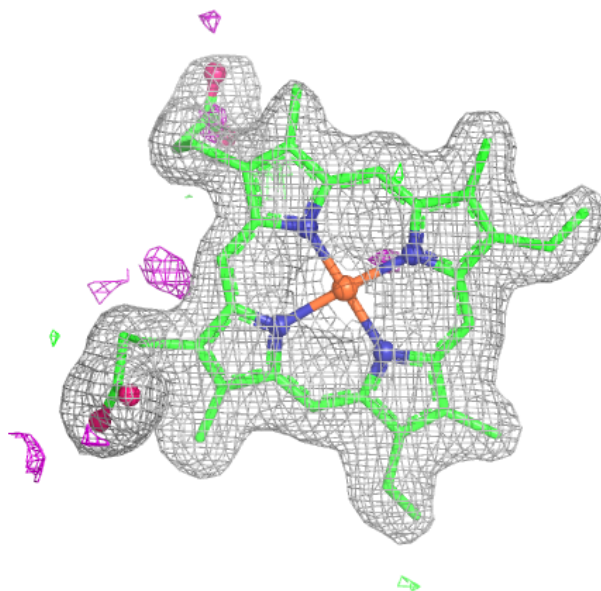
In the following table, the Atoms column lists the number of modelled atoms in the group and the number defined in the chemical component dictionary. The B-factors column lists the minimum, median, 95th percentile and maximum values of B factors of atoms in the group. The column labelled 'Q<0.9' lists the number of atoms with occupancy less than 0.9.

Mol	Type	Chain	Res	Atoms	RSCC	RSR	B-factors(Å ²)	Q<0.9
3	PO4	D	502	5/5	0.84	0.31	42,45,51,55	0
3	PO4	B	502	5/5	0.93	0.15	40,44,46,52	0
2	HEM	A	501	43/43	0.96	0.12	32,37,44,55	0
2	HEM	C	501	43/43	0.96	0.10	27,31,40,47	0
2	HEM	B	501	43/43	0.97	0.10	30,35,47,55	0
2	HEM	D	501	43/43	0.97	0.12	31,34,46,55	0
3	PO4	D	503	5/5	0.98	0.06	40,40,45,46	0

The following is a graphical depiction of the model fit to experimental electron density of all instances of the Ligand of Interest. In addition, ligands with molecular weight > 250 and outliers as shown on the geometry validation Tables will also be included. Each fit is shown from different orientation to approximate a three-dimensional view.

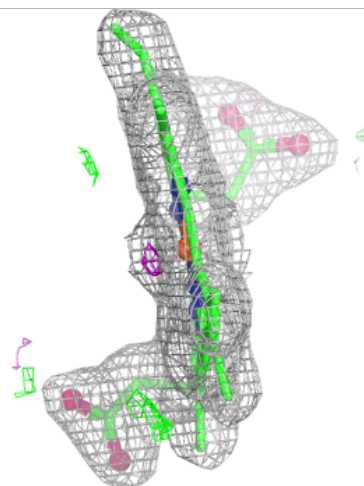
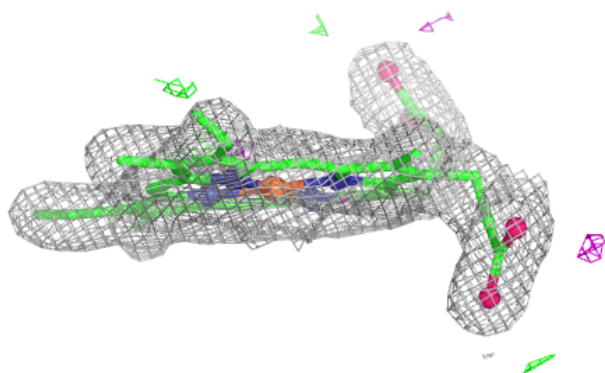
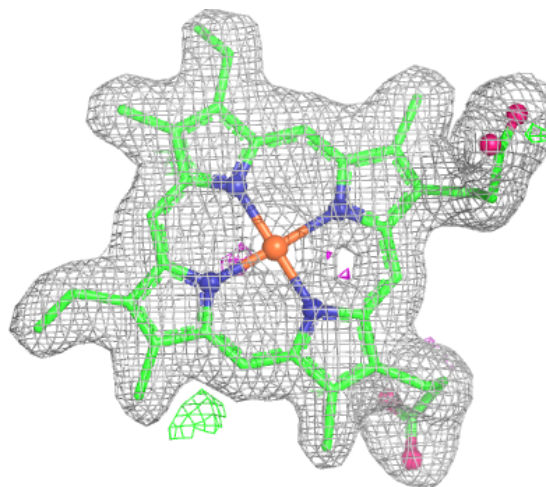
Electron density around HEM A 501:

$2mF_o-DF_c$ (at 0.7 rmsd) in gray
 mF_o-DF_c (at 3 rmsd) in purple (negative)
and green (positive)



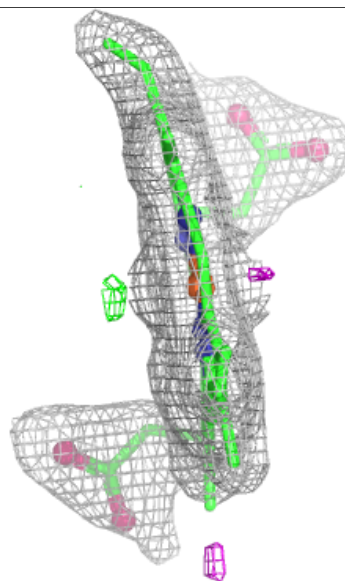
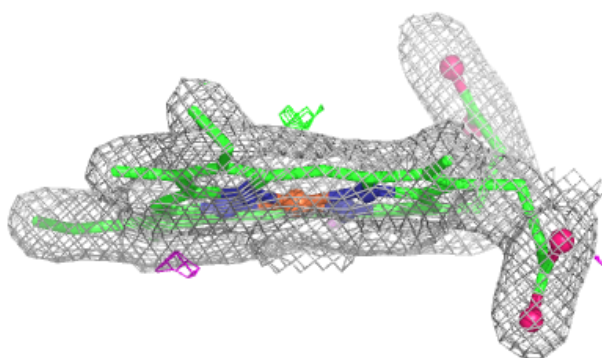
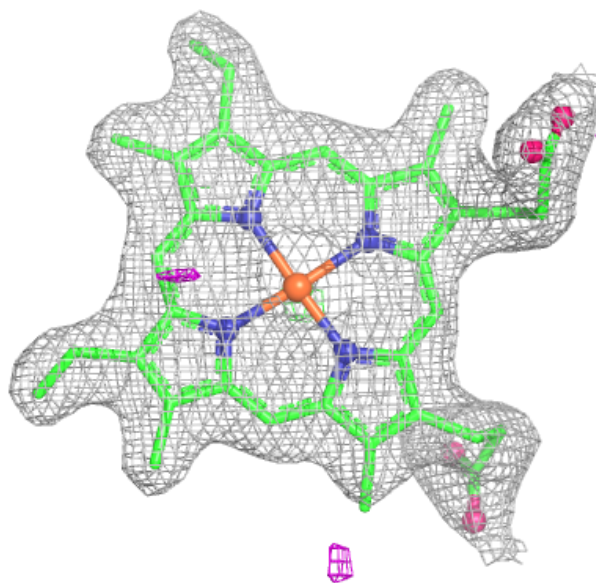
Electron density around HEM C 501:

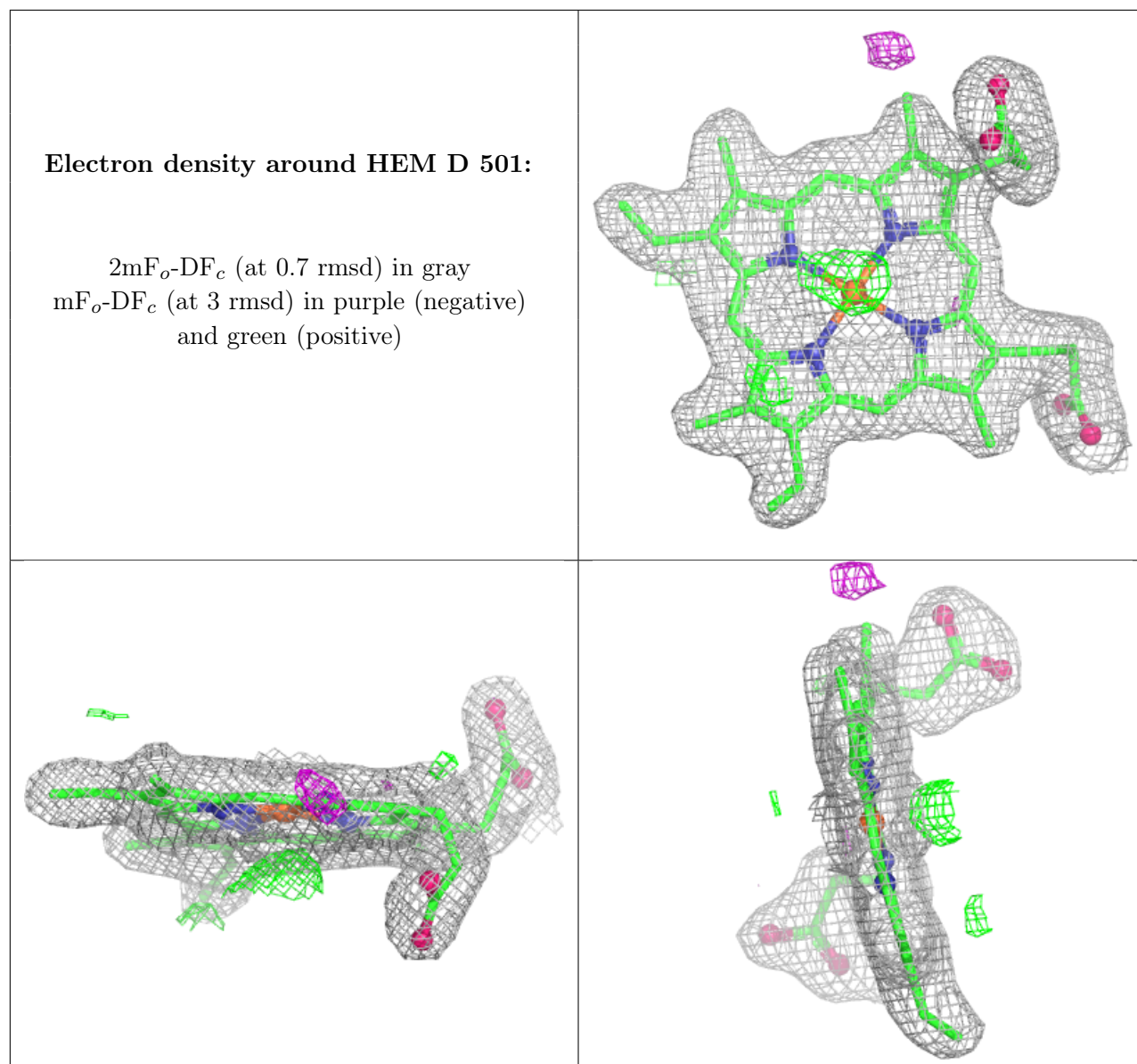
$2mF_o-DF_c$ (at 0.7 rmsd) in gray
 mF_o-DF_c (at 3 rmsd) in purple (negative)
and green (positive)



Electron density around HEM B 501:

$2mF_o-DF_c$ (at 0.7 rmsd) in gray
 mF_o-DF_c (at 3 rmsd) in purple (negative)
and green (positive)





6.5 Other polymers [\(i\)](#)

There are no such residues in this entry.