



Full wwPDB X-ray Structure Validation Report ⓘ

Feb 21, 2023 – 04:03 PM EST

PDB ID : 4E6D
Title : JAK2 kinase (JH1 domain) triple mutant in complex with compound 7
Authors : Murray, J.M.
Deposited on : 2012-03-15
Resolution : 2.22 Å(reported)

This is a Full wwPDB X-ray Structure Validation Report for a publicly released PDB entry.

We welcome your comments at validation@mail.wwpdb.org

A user guide is available at

<https://www.wwpdb.org/validation/2017/XrayValidationReportHelp>

with specific help available everywhere you see the ⓘ symbol.

The types of validation reports are described at

<http://www.wwpdb.org/validation/2017/FAQs#types>.

The following versions of software and data (see [references ⓘ](#)) were used in the production of this report:

MolProbity : 4.02b-467
Mogul : 1.8.5 (274361), CSD as541be (2020)
Xtriage (Phenix) : 1.13
EDS : 2.32.1
buster-report : 1.1.7 (2018)
Percentile statistics : 20191225.v01 (using entries in the PDB archive December 25th 2019)
Refmac : 5.8.0158
CCP4 : 7.0.044 (Gargrove)
Ideal geometry (proteins) : Engh & Huber (2001)
Ideal geometry (DNA, RNA) : Parkinson et al. (1996)
Validation Pipeline (wwPDB-VP) : 2.32.1

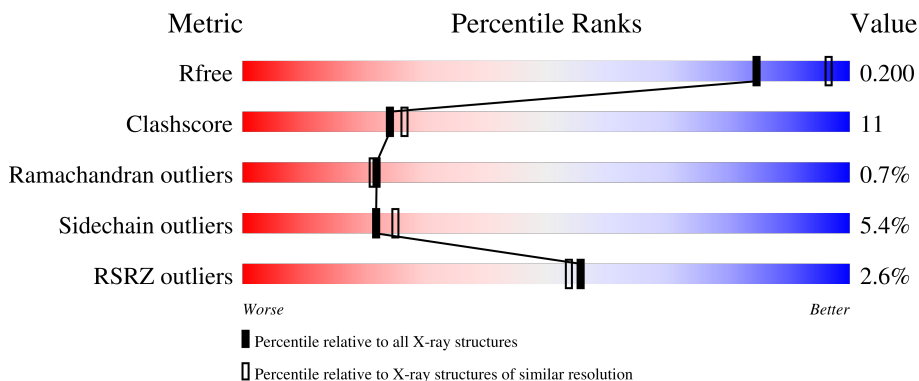
1 Overall quality at a glance

The following experimental techniques were used to determine the structure:

X-RAY DIFFRACTION

The reported resolution of this entry is 2.22 Å.

Percentile scores (ranging between 0-100) for global validation metrics of the entry are shown in the following graphic. The table shows the number of entries on which the scores are based.



Metric	Whole archive (#Entries)	Similar resolution (#Entries, resolution range(Å))
R_{free}	130704	5912 (2.24-2.20)
Clashscore	141614	6646 (2.24-2.20)
Ramachandran outliers	138981	6543 (2.24-2.20)
Sidechain outliers	138945	6544 (2.24-2.20)
RSRZ outliers	127900	5797 (2.24-2.20)

The table below summarises the geometric issues observed across the polymeric chains and their fit to the electron density. The red, orange, yellow and green segments of the lower bar indicate the fraction of residues that contain outliers for ≥ 3 , 2, 1 and 0 types of geometric quality criteria respectively. A grey segment represents the fraction of residues that are not modelled. The numeric value for each fraction is indicated below the corresponding segment, with a dot representing fractions $\leq 5\%$. The upper red bar (where present) indicates the fraction of residues that have poor fit to the electron density. The numeric value is given above the bar.

Mol	Chain	Length	Quality of chain
1	A	298	 3% 77% 16% . . .
1	B	298	 2% 73% 22% . .

The following table lists non-polymeric compounds, carbohydrate monomers and non-standard residues in protein, DNA, RNA chains that are outliers for geometric or electron-density-fit criteria:

Mol	Type	Chain	Res	Chirality	Geometry	Clashes	Electron density
3	GOL	B	1202	-	-	X	-

2 Entry composition [i](#)

There are 4 unique types of molecules in this entry. The entry contains 5174 atoms, of which 32 are hydrogens and 0 are deuteriums.

In the tables below, the ZeroOcc column contains the number of atoms modelled with zero occupancy, the AltConf column contains the number of residues with at least one atom in alternate conformation and the Trace column contains the number of residues modelled with at most 2 atoms.

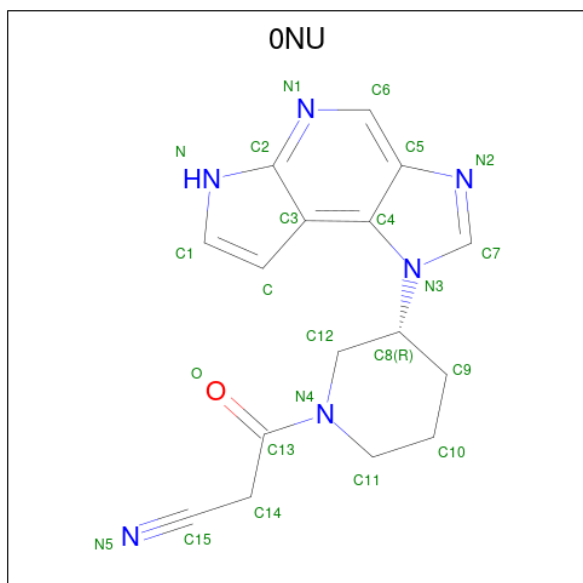
- Molecule 1 is a protein called Tyrosine-protein kinase JAK2.

Mol	Chain	Residues	Atoms					ZeroOcc	AltConf	Trace	
			Total	C	N	O	P				S
1	A	288	Total 2407	C 1528	N 418	O 445	P 2	S 14	26	2	0
1	B	288	Total 2375	C 1508	N 409	O 442	P 2	S 14	0	0	0

There are 6 discrepancies between the modelled and reference sequences:

Chain	Residue	Modelled	Actual	Comment	Reference
A	853	ARG	GLN	engineered mutation	UNP O60674
A	931	PHE	TYR	engineered mutation	UNP O60674
A	939	GLU	ASP	engineered mutation	UNP O60674
B	853	ARG	GLN	engineered mutation	UNP O60674
B	931	PHE	TYR	engineered mutation	UNP O60674
B	939	GLU	ASP	engineered mutation	UNP O60674

- Molecule 2 is 3-[(3R)-3-(imidazo[4,5-d]pyrrolo[2,3-b]pyridin-1(6H)-yl)piperidin-1-yl]-3-oxopropanenitrile (three-letter code: ONU) (formula: C₁₆H₁₆N₆O).



Mol	Chain	Residues	Atoms					ZeroOcc	AltConf
2	A	1	Total	C	H	N	O	0	0
			39	16	16	6	1		
2	B	1	Total	C	H	N	O	0	0
			39	16	16	6	1		

- Molecule 3 is GLYCEROL (three-letter code: GOL) (formula: C₃H₈O₃).



Mol	Chain	Residues	Atoms			ZeroOcc	AltConf
3	B	1	Total	C	O	0	0
			6	3	3		


- Molecule 4 is water.

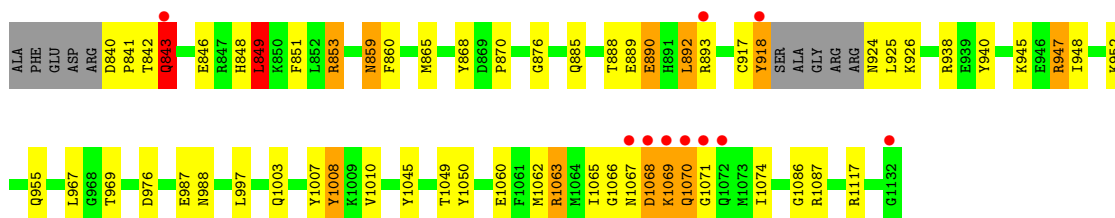
Mol	Chain	Residues	Atoms		ZeroOcc	AltConf
4	A	160	Total	O	0	0
			160	160		
4	B	148	Total	O	0	0
			148	148		

3 Residue-property plots [i](#)


These plots are drawn for all protein, RNA, DNA and oligosaccharide chains in the entry. The first graphic for a chain summarises the proportions of the various outlier classes displayed in the second graphic. The second graphic shows the sequence view annotated by issues in geometry and electron density. Residues are color-coded according to the number of geometric quality criteria for which they contain at least one outlier: green = 0, yellow = 1, orange = 2 and red = 3 or more. A red dot above a residue indicates a poor fit to the electron density ($RSRZ > 2$). Stretches of 2 or more consecutive residues without any outlier are shown as a green connector. Residues present in the sample, but not in the model, are shown in grey.

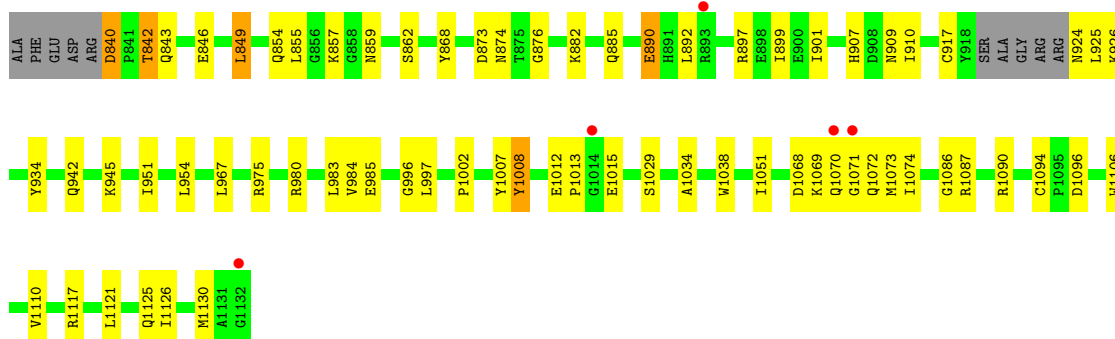
- Molecule 1: Tyrosine-protein kinase JAK2

Chain A: 



- Molecule 1: Tyrosine-protein kinase JAK2

Chain B: 



4 Data and refinement statistics i

Property	Value	Source
Space group	P 41	Depositor
Cell constants a, b, c, α , β , γ	111.03Å 111.03Å 70.58Å 90.00° 90.00° 90.00°	Depositor
Resolution (Å)	59.56 – 2.22 59.56 – 2.22	Depositor EDS
% Data completeness (in resolution range)	100.0 (59.56-2.22) 100.0 (59.56-2.22)	Depositor EDS
R_{merge}	0.10	Depositor
R_{sym}	(Not available)	Depositor
$\langle I/\sigma(I) \rangle$ ¹	3.75 (at 2.22Å)	Xtrriage
Refinement program	PHENIX dev_991	Depositor
R, R_{free}	0.160 , 0.203 0.163 , 0.200	Depositor DCC
R_{free} test set	2180 reflections (5.08%)	wwPDB-VP
Wilson B-factor (Å ²)	30.9	Xtrriage
Anisotropy	0.422	Xtrriage
Bulk solvent k_{sol} (e/Å ³), B_{sol} (Å ²)	0.34 , 45.8	EDS
L-test for twinning ²	$\langle L \rangle = 0.49$, $\langle L^2 \rangle = 0.32$	Xtrriage
Estimated twinning fraction	0.032 for h,-k,-l	Xtrriage
F_o, F_c correlation	0.96	EDS
Total number of atoms	5174	wwPDB-VP
Average B, all atoms (Å ²)	41.0	wwPDB-VP

Xtrriage's analysis on translational NCS is as follows: *The largest off-origin peak in the Patterson function is 3.35% of the height of the origin peak. No significant pseudotranslation is detected.*

¹Intensities estimated from amplitudes.

²Theoretical values of $\langle |L| \rangle$, $\langle L^2 \rangle$ for acentric reflections are 0.5, 0.333 respectively for untwinned datasets, and 0.375, 0.2 for perfectly twinned datasets.

5 Model quality [i](#)

5.1 Standard geometry [i](#)

Bond lengths and bond angles in the following residue types are not validated in this section: 0NU, GOL, PTR

The Z score for a bond length (or angle) is the number of standard deviations the observed value is removed from the expected value. A bond length (or angle) with $|Z| > 5$ is considered an outlier worth inspection. RMSZ is the root-mean-square of all Z scores of the bond lengths (or angles).

Mol	Chain	Bond lengths		Bond angles	
		RMSZ	# Z >5	RMSZ	# Z >5
1	A	0.74	0/2430	0.74	2/3265 (0.1%)
1	B	0.68	0/2392	0.72	0/3219
All	All	0.71	0/4822	0.73	2/6484 (0.0%)

Chiral center outliers are detected by calculating the chiral volume of a chiral center and verifying if the center is modelled as a planar moiety or with the opposite hand. A planarity outlier is detected by checking planarity of atoms in a peptide group, atoms in a mainchain group or atoms of a sidechain that are expected to be planar.

Mol	Chain	#Chirality outliers	#Planarity outliers
1	A	0	3

There are no bond length outliers.

All (2) bond angle outliers are listed below:

Mol	Chain	Res	Type	Atoms	Z	Observed($^{\circ}$)	Ideal($^{\circ}$)
1	A	849	LEU	CA-CB-CG	5.30	127.50	115.30
1	A	840	ASP	CB-CG-OD2	5.22	122.99	118.30

There are no chirality outliers.

All (3) planarity outliers are listed below:

Mol	Chain	Res	Type	Group
1	A	1063[A]	ARG	Mainchain
1	A	1063[B]	ARG	Mainchain
1	A	1070	GLN	Peptide

5.2 Too-close contacts [i](#)

In the following table, the Non-H and H(model) columns list the number of non-hydrogen atoms and hydrogen atoms in the chain respectively. The H(added) column lists the number of hydrogen atoms added and optimized by MolProbity. The Clashes column lists the number of clashes within the asymmetric unit, whereas Symm-Clashes lists symmetry-related clashes.

Mol	Chain	Non-H	H(model)	H(added)	Clashes	Symm-Clashes
1	A	2407	0	2389	55	0
1	B	2375	0	2331	51	0
2	A	23	16	16	0	0
2	B	23	16	16	1	0
3	B	6	0	8	7	0
4	A	160	0	0	5	0
4	B	148	0	0	2	0
All	All	5142	32	4760	105	0

The all-atom clashscore is defined as the number of clashes found per 1000 atoms (including hydrogen atoms). The all-atom clashscore for this structure is 11.

All (105) close contacts within the same asymmetric unit are listed below, sorted by their clash magnitude.

Atom-1	Atom-2	Interatomic distance (Å)	Clash overlap (Å)
1:B:882:LYS:NZ	3:B:1202:GOL:H32	1.65	1.11
1:B:996:GLY:HA3	3:B:1202:GOL:H31	1.06	1.04
1:B:996:GLY:HA3	3:B:1202:GOL:C3	1.88	1.03
1:B:882:LYS:HZ1	3:B:1202:GOL:H32	1.34	0.88
1:B:882:LYS:HZ3	3:B:1202:GOL:H32	1.38	0.84
1:A:1008:PTR:HE1	1:A:1010:VAL:HB	1.59	0.83
1:A:1065:ILE:CG2	1:A:1069:LYS:HG2	2.09	0.81
1:A:888:THR:HG22	1:A:890:GLU:H	1.45	0.81
1:A:1066:GLY:O	1:A:1069:LYS:HB2	1.80	0.81
1:A:1060:GLU:OE1	1:A:1063[A]:ARG:NH2	2.14	0.76
1:A:868:TYR:CE2	1:A:870:PRO:HG3	2.22	0.75
1:B:840:ASP:N	1:B:840:ASP:OD1	2.18	0.75
1:A:843:GLN:HG2	1:A:918:TYR:OH	1.88	0.74
1:A:853:ARG:HH11	1:A:853:ARG:HG3	1.53	0.73
1:A:853:ARG:HG3	1:A:853:ARG:NH1	2.03	0.73
1:A:1071:GLY:HA2	1:A:1074:ILE:CD1	2.18	0.73
1:A:1071:GLY:HA2	1:A:1074:ILE:HD12	1.69	0.72
1:B:1069:LYS:CB	1:B:1074:ILE:HD11	2.22	0.70
1:A:888:THR:HG22	1:A:890:GLU:N	2.08	0.69
1:B:882:LYS:NZ	3:B:1202:GOL:C3	2.53	0.68

Continued on next page...

Continued from previous page...

Atom-1	Atom-2	Interatomic distance (Å)	Clash overlap (Å)
1:B:1069:LYS:O	1:B:1070:GLN:C	2.31	0.68
1:A:952:LYS:NZ	1:A:988:ASN:OD1	2.26	0.67
1:B:882:LYS:HZ1	3:B:1202:GOL:C3	2.07	0.66
1:B:1117:ARG:O	1:B:1121:LEU:HD13	1.95	0.65
1:A:1003:GLN:HG3	4:A:1437:HOH:O	1.96	0.65
1:B:907:HIS:HE1	1:B:909:ASN:HD22	1.42	0.64
1:A:1065:ILE:HG22	1:A:1069:LYS:HG2	1.77	0.64
1:A:1068:ASP:OD2	1:A:1069:LYS:NZ	2.18	0.63
1:A:947:ARG:HG2	1:A:948:ILE:HG13	1.81	0.62
1:B:842:THR:HG21	4:B:1387:HOH:O	1.98	0.62
1:B:840:ASP:HB2	1:B:842:THR:HB	1.85	0.57
1:B:840:ASP:HB2	1:B:842:THR:H	1.68	0.57
1:B:899:ILE:CD1	1:B:925:LEU:HD13	2.34	0.57
1:A:851:PHE:CZ	1:A:853:ARG:HA	2.39	0.57
1:A:853:ARG:HH11	1:A:853:ARG:CG	2.16	0.56
1:B:1121:LEU:O	1:B:1125:GLN:HG3	2.05	0.56
1:A:843:GLN:HG2	1:A:918:TYR:CZ	2.41	0.56
1:B:859:ASN:ND2	1:B:1015:GLU:H	2.03	0.56
1:B:1002:PRO:HD3	1:B:1008:PTR:HD2	1.87	0.56
1:B:1071:GLY:HA2	1:B:1074:ILE:HD12	1.88	0.56
1:A:1086:GLY:O	1:A:1087:ARG:HD3	2.06	0.55
1:A:938:ARG:NH1	4:A:1341:HOH:O	2.39	0.55
1:A:890:GLU:HA	1:A:893:ARG:NH1	2.22	0.55
1:B:873:ASP:O	1:B:874:ASN:HB2	2.08	0.54
1:B:897:ARG:O	1:B:901:ILE:HG12	2.08	0.54
1:B:854:GLN:HG3	1:B:855:LEU:N	2.24	0.53
1:B:975:ARG:HD3	1:B:997:LEU:O	2.09	0.52
1:A:859:ASN:O	1:A:860:PHE:HB2	2.08	0.52
1:A:888:THR:HG22	1:A:889:GLU:N	2.24	0.51
1:B:907:HIS:HB3	1:B:910:ILE:HG12	1.93	0.51
1:A:843:GLN:CG	1:A:918:TYR:OH	2.58	0.51
1:A:1067:ASN:C	1:A:1069:LYS:H	2.12	0.51
1:A:924:ASN:ND2	4:A:1438:HOH:O	2.34	0.51
1:B:1070:GLN:O	1:B:1073:MET:HB2	2.12	0.50
1:A:846:GLU:OE2	1:A:926:LYS:NZ	2.36	0.50
1:B:1034:ALA:HB3	1:B:1110:VAL:HG13	1.93	0.50
1:A:1068:ASP:OD1	1:A:1068:ASP:O	2.30	0.50
1:A:846:GLU:HG3	1:A:926:LYS:HZ2	1.76	0.50
1:A:890:GLU:O	1:A:890:GLU:OE1	2.30	0.50
1:B:942:GLN:HG2	1:B:1051:ILE:HB	1.94	0.50
1:B:1034:ALA:CB	1:B:1110:VAL:HG13	2.41	0.49

Continued on next page...

Continued from previous page...

Atom-1	Atom-2	Interatomic distance (Å)	Clash overlap (Å)
1:B:907:HIS:CE1	1:B:909:ASN:HD22	2.27	0.49
1:A:868:TYR:O	1:A:876:GLY:HA3	2.13	0.49
1:A:859:ASN:O	1:A:860:PHE:CB	2.60	0.49
1:A:952:LYS:NZ	1:A:955:GLN:HE22	2.10	0.49
1:B:868:TYR:O	1:B:876:GLY:HA3	2.13	0.48
1:A:947:ARG:O	1:A:947:ARG:HG3	2.12	0.47
1:B:899:ILE:HD12	1:B:925:LEU:HD13	1.95	0.47
4:A:1432:HOH:O	1:B:885:GLN:HG2	2.14	0.47
1:B:1090:ARG:HD2	1:B:1094:CYS:O	2.15	0.46
1:B:1069:LYS:O	1:B:1071:GLY:N	2.48	0.46
1:B:849:LEU:HD13	1:B:868:TYR:HD1	1.81	0.46
1:A:1117:ARG:NH1	1:B:885:GLN:HB3	2.31	0.46
1:B:890:GLU:H	1:B:890:GLU:HG2	1.48	0.45
1:A:1065:ILE:HG23	1:A:1069:LYS:HG2	1.96	0.45
1:B:859:ASN:ND2	1:B:1015:GLU:N	2.63	0.45
1:A:1068:ASP:O	1:A:1070:GLN:HG2	2.17	0.45
1:A:1008:PTR:CE1	1:A:1010:VAL:HB	2.38	0.45
1:B:857:LYS:HA	1:B:862:SER:HA	1.99	0.44
1:A:846:GLU:CD	1:A:926:LYS:HZ1	2.18	0.44
1:B:846:GLU:OE2	1:B:926:LYS:NZ	2.43	0.44
1:A:849:LEU:HD13	1:A:868:TYR:HD1	1.83	0.43
1:B:945:LYS:HB3	1:B:945:LYS:HE2	1.84	0.43
1:B:1012:GLU:HA	1:B:1013:PRO:HD3	1.77	0.43
1:A:945:LYS:HB2	1:A:1050:TYR:CD2	2.53	0.43
1:A:976:ASP:HB2	1:A:997:LEU:HD12	2.01	0.43
1:B:980:ARG:HD3	4:B:1366:HOH:O	2.18	0.43
1:B:925:LEU:HD23	1:B:925:LEU:HA	1.64	0.42
1:B:954:LEU:HD23	1:B:954:LEU:HA	1.82	0.42
1:B:1126:ILE:O	1:B:1130:MET:HG3	2.19	0.42
1:A:848:HIS:CG	1:A:870:PRO:HA	2.54	0.42
1:A:888:THR:CG2	1:A:889:GLU:N	2.83	0.42
1:B:1086:GLY:O	1:B:1087:ARG:HD3	2.19	0.42
1:A:892:LEU:HD13	1:A:892:LEU:HA	1.78	0.42
1:A:1067:ASN:C	1:A:1069:LYS:N	2.69	0.42
1:B:1038:TRP:CE3	1:B:1106:TRP:HA	2.55	0.41
1:A:870:PRO:HD2	4:A:1326:HOH:O	2.19	0.41
1:B:983:LEU:HD21	2:B:1201:ONU:C4	2.50	0.41
1:A:1045:TYR:O	1:A:1049:THR:HG23	2.21	0.41
1:A:885:GLN:OE1	1:A:885:GLN:HA	2.20	0.41
1:A:1062:MET:HB3	1:A:1067:ASN:OD1	2.21	0.41
1:A:940:TYR:OH	1:A:987:GLU:HG2	2.21	0.41

Continued on next page...

Continued from previous page...

Atom-1	Atom-2	Interatomic distance (Å)	Clash overlap (Å)
1:A:843:GLN:OE1	1:A:918:TYR:OH	2.39	0.40
1:B:934:TYR:HB2	1:B:984:VAL:O	2.22	0.40
1:A:853:ARG:HD3	1:A:865:MET:SD	2.62	0.40

There are no symmetry-related clashes.

5.3 Torsion angles [i](#)

5.3.1 Protein backbone [i](#)

In the following table, the Percentiles column shows the percent Ramachandran outliers of the chain as a percentile score with respect to all X-ray entries followed by that with respect to entries of similar resolution.

The Analysed column shows the number of residues for which the backbone conformation was analysed, and the total number of residues.

Mol	Chain	Analysed	Favoured	Allowed	Outliers	Percentiles	
1	A	284/298 (95%)	276 (97%)	4 (1%)	4 (1%)	11	8
1	B	282/298 (95%)	275 (98%)	7 (2%)	0	100	100
All	All	566/596 (95%)	551 (97%)	11 (2%)	4 (1%)	22	21

All (4) Ramachandran outliers are listed below:

Mol	Chain	Res	Type
1	A	842	THR
1	A	859	ASN
1	A	841	PRO
1	A	843	GLN

5.3.2 Protein sidechains [i](#)

In the following table, the Percentiles column shows the percent sidechain outliers of the chain as a percentile score with respect to all X-ray entries followed by that with respect to entries of similar resolution.

The Analysed column shows the number of residues for which the sidechain conformation was analysed, and the total number of residues.

Mol	Chain	Analysed	Rotameric	Outliers	Percentiles	
1	A	264/269 (98%)	251 (95%)	13 (5%)	25	29
1	B	258/269 (96%)	243 (94%)	15 (6%)	20	22
All	All	522/538 (97%)	494 (95%)	28 (5%)	22	25

All (28) residues with a non-rotameric sidechain are listed below:

Mol	Chain	Res	Type
1	A	843	GLN
1	A	849	LEU
1	A	853	ARG
1	A	890	GLU
1	A	892	LEU
1	A	917	CYS
1	A	918	TYR
1	A	925	LEU
1	A	947	ARG
1	A	967	LEU
1	A	969	THR
1	A	1068	ASP
1	A	1069	LYS
1	B	840	ASP
1	B	842	THR
1	B	843	GLN
1	B	849	LEU
1	B	890	GLU
1	B	892	LEU
1	B	917	CYS
1	B	924	ASN
1	B	951	ILE
1	B	967	LEU
1	B	985	GLU
1	B	1029	SER
1	B	1068	ASP
1	B	1072	GLN
1	B	1096	ASP

Sometimes sidechains can be flipped to improve hydrogen bonding and reduce clashes. All (3) such sidechains are listed below:

Mol	Chain	Res	Type
1	A	955	GLN
1	B	859	ASN

Continued on next page...

Continued from previous page...

Mol	Chain	Res	Type
1	B	909	ASN

5.3.3 RNA [i](#)

There are no RNA molecules in this entry.

5.4 Non-standard residues in protein, DNA, RNA chains [i](#)

4 non-standard protein/DNA/RNA residues are modelled in this entry.

In the following table, the Counts columns list the number of bonds (or angles) for which Mogul statistics could be retrieved, the number of bonds (or angles) that are observed in the model and the number of bonds (or angles) that are defined in the Chemical Component Dictionary. The Link column lists molecule types, if any, to which the group is linked. The Z score for a bond length (or angle) is the number of standard deviations the observed value is removed from the expected value. A bond length (or angle) with $|Z| > 2$ is considered an outlier worth inspection. RMSZ is the root-mean-square of all Z scores of the bond lengths (or angles).

Mol	Type	Chain	Res	Link	Bond lengths			Bond angles		
					Counts	RMSZ	# Z > 2	Counts	RMSZ	# Z > 2
1	PTR	A	1007	1	15,16,17	1.26	2 (13%)	19,22,24	0.79	0
1	PTR	B	1008	1	15,16,17	1.18	1 (6%)	19,22,24	0.68	0
1	PTR	A	1008	1	15,16,17	1.32	1 (6%)	19,22,24	1.08	2 (10%)
1	PTR	B	1007	1	15,16,17	1.26	2 (13%)	19,22,24	0.59	1 (5%)

In the following table, the Chirals column lists the number of chiral outliers, the number of chiral centers analysed, the number of these observed in the model and the number defined in the Chemical Component Dictionary. Similar counts are reported in the Torsion and Rings columns. '-' means no outliers of that kind were identified.

Mol	Type	Chain	Res	Link	Chirals	Torsions	Rings
1	PTR	A	1007	1	-	0/10/11/13	0/1/1/1
1	PTR	B	1008	1	-	2/10/11/13	0/1/1/1
1	PTR	A	1008	1	-	1/10/11/13	0/1/1/1
1	PTR	B	1007	1	-	0/10/11/13	0/1/1/1

All (6) bond length outliers are listed below:

Mol	Chain	Res	Type	Atoms	Z	Observed(Å)	Ideal(Å)
1	A	1008	PTR	OH-CZ	-4.45	1.30	1.40

Continued on next page...

Continued from previous page...

Mol	Chain	Res	Type	Atoms	Z	Observed(Å)	Ideal(Å)
1	B	1008	PTR	OH-CZ	-4.16	1.31	1.40
1	B	1007	PTR	OH-CZ	-3.68	1.32	1.40
1	A	1007	PTR	OH-CZ	-3.35	1.33	1.40
1	B	1007	PTR	P-OH	2.64	1.63	1.59
1	A	1007	PTR	P-OH	2.60	1.63	1.59

All (3) bond angle outliers are listed below:

Mol	Chain	Res	Type	Atoms	Z	Observed(°)	Ideal(°)
1	A	1008	PTR	OH-CZ-CE2	2.53	126.77	119.23
1	A	1008	PTR	OH-CZ-CE1	-2.30	112.40	119.23
1	B	1007	PTR	O3P-P-OH	2.05	111.66	105.24

There are no chirality outliers.

All (3) torsion outliers are listed below:

Mol	Chain	Res	Type	Atoms
1	B	1008	PTR	CZ-OH-P-O1P
1	B	1008	PTR	CZ-OH-P-O2P
1	A	1008	PTR	CE2-CZ-OH-P

There are no ring outliers.

2 monomers are involved in 3 short contacts:

Mol	Chain	Res	Type	Clashes	Symm-Clashes
1	B	1008	PTR	1	0
1	A	1008	PTR	2	0

5.5 Carbohydrates [i](#)

There are no monosaccharides in this entry.

5.6 Ligand geometry [i](#)

3 ligands are modelled in this entry.

In the following table, the Counts columns list the number of bonds (or angles) for which Mogul statistics could be retrieved, the number of bonds (or angles) that are observed in the model and the number of bonds (or angles) that are defined in the Chemical Component Dictionary. The Link column lists molecule types, if any, to which the group is linked. The Z score for a bond

length (or angle) is the number of standard deviations the observed value is removed from the expected value. A bond length (or angle) with $|Z| > 2$ is considered an outlier worth inspection. RMSZ is the root-mean-square of all Z scores of the bond lengths (or angles).

Mol	Type	Chain	Res	Link	Bond lengths			Bond angles		
					Counts	RMSZ	# Z > 2	Counts	RMSZ	# Z > 2
2	0NU	B	1201	-	18,26,26	1.02	1 (5%)	16,37,37	0.85	1 (6%)
2	0NU	A	1201	-	18,26,26	0.99	1 (5%)	16,37,37	1.42	2 (12%)
3	GOL	B	1202	-	5,5,5	0.38	0	5,5,5	0.41	0

In the following table, the Chirals column lists the number of chiral outliers, the number of chiral centers analysed, the number of these observed in the model and the number defined in the Chemical Component Dictionary. Similar counts are reported in the Torsion and Rings columns. '-' means no outliers of that kind were identified.

Mol	Type	Chain	Res	Link	Chirals	Torsions	Rings
2	0NU	B	1201	-	-	0/6/21/21	0/4/4/4
2	0NU	A	1201	-	-	0/6/21/21	0/4/4/4
3	GOL	B	1202	-	-	2/4/4/4	-

All (2) bond length outliers are listed below:

Mol	Chain	Res	Type	Atoms	Z	Observed(Å)	Ideal(Å)
2	A	1201	0NU	C6-N1	3.15	1.34	1.30
2	B	1201	0NU	C6-N1	3.05	1.34	1.30

All (3) bond angle outliers are listed below:

Mol	Chain	Res	Type	Atoms	Z	Observed(°)	Ideal(°)
2	A	1201	0NU	C6-C5-C4	-2.91	118.19	121.12
2	A	1201	0NU	C9-C8-C12	2.63	114.21	110.93
2	B	1201	0NU	C6-C5-C4	-2.19	118.91	121.12

There are no chirality outliers.

All (2) torsion outliers are listed below:

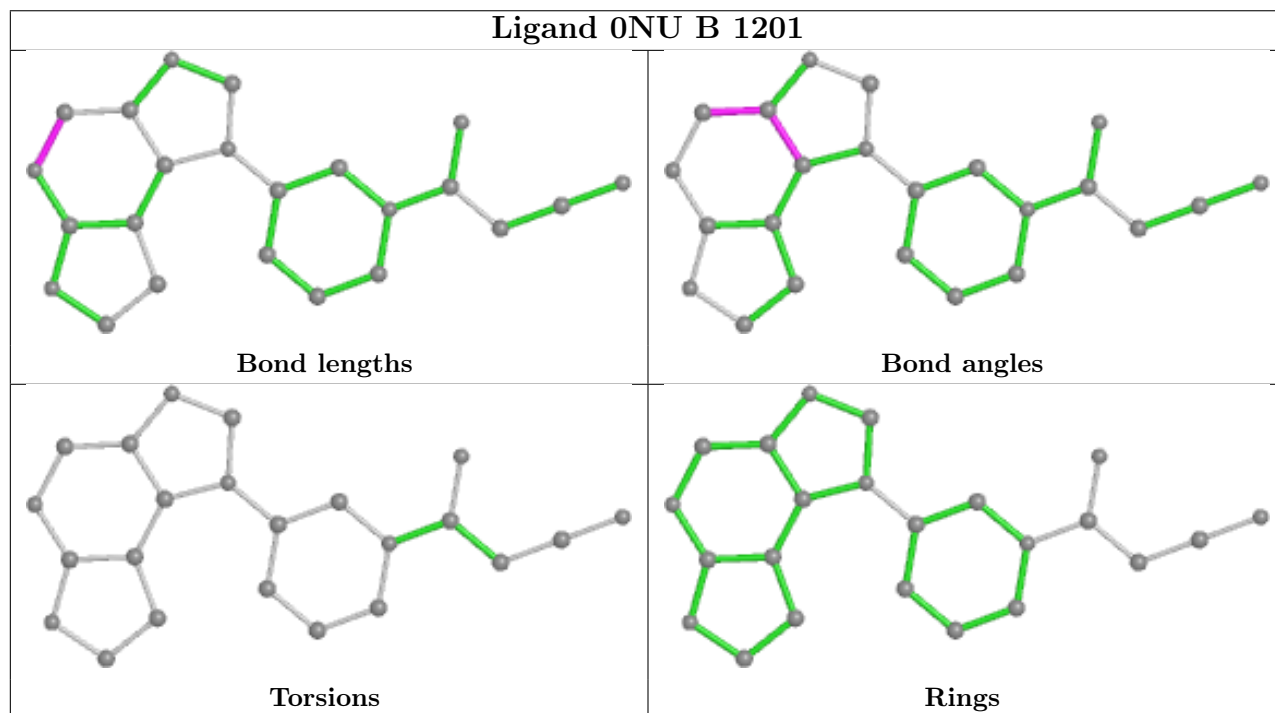
Mol	Chain	Res	Type	Atoms
3	B	1202	GOL	O1-C1-C2-C3
3	B	1202	GOL	O1-C1-C2-O2

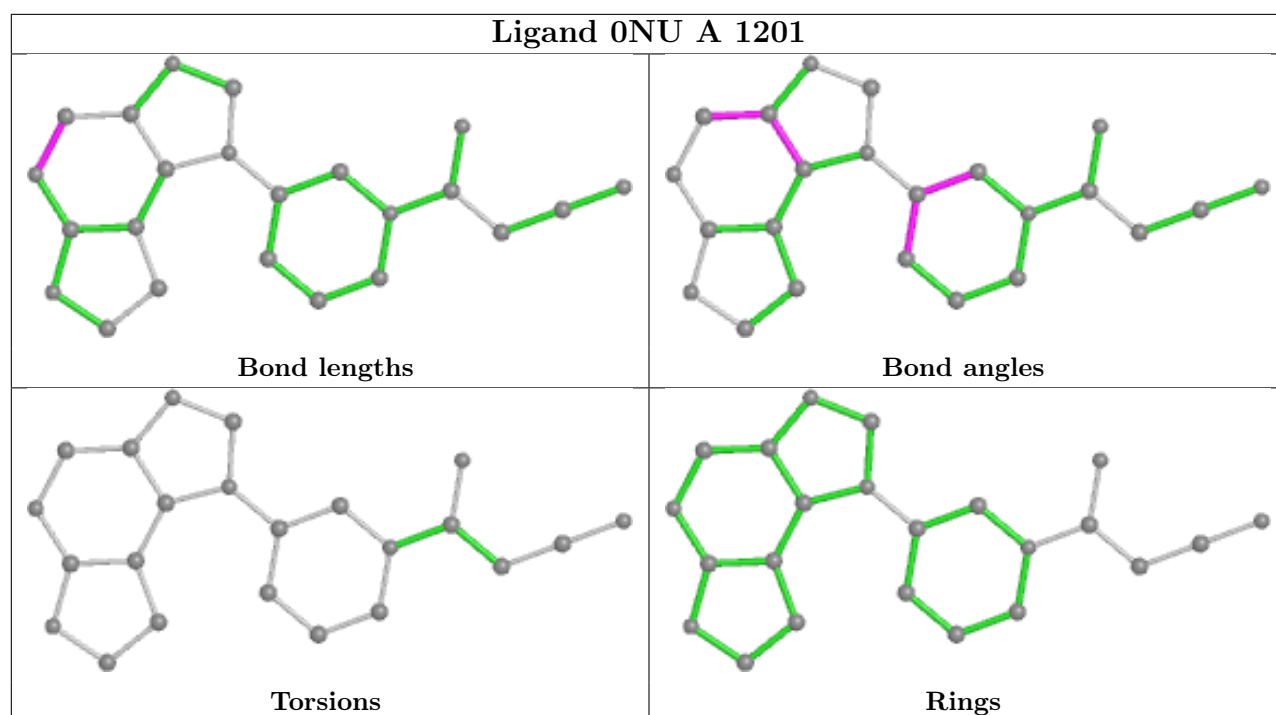
There are no ring outliers.

2 monomers are involved in 8 short contacts:

Mol	Chain	Res	Type	Clashes	Symm-Clashes
2	B	1201	0NU	1	0
3	B	1202	GOL	7	0

The following is a two-dimensional graphical depiction of Mogul quality analysis of bond lengths, bond angles, torsion angles, and ring geometry for all instances of the Ligand of Interest. In addition, ligands with molecular weight > 250 and outliers as shown on the validation Tables will also be included. For torsion angles, if less than 5% of the Mogul distribution of torsion angles is within 10 degrees of the torsion angle in question, then that torsion angle is considered an outlier. Any bond that is central to one or more torsion angles identified as an outlier by Mogul will be highlighted in the graph. For rings, the root-mean-square deviation (RMSD) between the ring in question and similar rings identified by Mogul is calculated over all ring torsion angles. If the average RMSD is greater than 60 degrees and the minimal RMSD between the ring in question and any Mogul-identified rings is also greater than 60 degrees, then that ring is considered an outlier. The outliers are highlighted in purple. The color gray indicates Mogul did not find sufficient equivalents in the CSD to analyse the geometry.





5.7 Other polymers [i](#)

There are no such residues in this entry.

5.8 Polymer linkage issues [i](#)

There are no chain breaks in this entry.

6 Fit of model and data [i](#)

6.1 Protein, DNA and RNA chains [i](#)

In the following table, the column labelled ‘#RSRZ> 2’ contains the number (and percentage) of RSRZ outliers, followed by percent RSRZ outliers for the chain as percentile scores relative to all X-ray entries and entries of similar resolution. The OWAB column contains the minimum, median, 95th percentile and maximum values of the occupancy-weighted average B-factor per residue. The column labelled ‘Q< 0.9’ lists the number of (and percentage) of residues with an average occupancy less than 0.9.

Mol	Chain	Analysed	<RSRZ>	#RSRZ>2	OWAB(Å ²)	Q<0.9
1	A	283/298 (94%)	-0.23	10 (3%) 44 41	19, 33, 87, 124	1 (0%)
1	B	286/298 (95%)	-0.35	5 (1%) 70 68	21, 37, 74, 115	0
All	All	569/596 (95%)	-0.29	15 (2%) 56 54	19, 36, 81, 124	1 (0%)

All (15) RSRZ outliers are listed below:

Mol	Chain	Res	Type	RSRZ
1	A	1132	GLY	5.3
1	A	1070	GLN	5.1
1	A	1067	ASN	4.5
1	A	1069	LYS	4.2
1	B	1070	GLN	3.8
1	A	1068	ASP	3.8
1	A	918	TYR	3.1
1	A	843	GLN	3.0
1	A	893	ARG	2.9
1	B	893	ARG	2.8
1	B	1071	GLY	2.4
1	B	1014	GLY	2.2
1	B	1132	GLY	2.1
1	A	1071	GLY	2.0
1	A	1072	GLN	2.0

6.2 Non-standard residues in protein, DNA, RNA chains [i](#)

In the following table, the Atoms column lists the number of modelled atoms in the group and the number defined in the chemical component dictionary. The B-factors column lists the minimum, median, 95th percentile and maximum values of B factors of atoms in the group. The column labelled ‘Q< 0.9’ lists the number of atoms with occupancy less than 0.9.

Mol	Type	Chain	Res	Atoms	RSCC	RSR	B-factors(\AA^2)	Q<0.9
1	PTR	B	1007	16/17	0.94	0.11	34,45,80,90	0
1	PTR	B	1008	16/17	0.95	0.13	33,62,90,93	0
1	PTR	A	1007	16/17	0.96	0.11	25,33,69,79	0
1	PTR	A	1008	16/17	0.97	0.12	25,51,71,76	0

6.3 Carbohydrates [i](#)

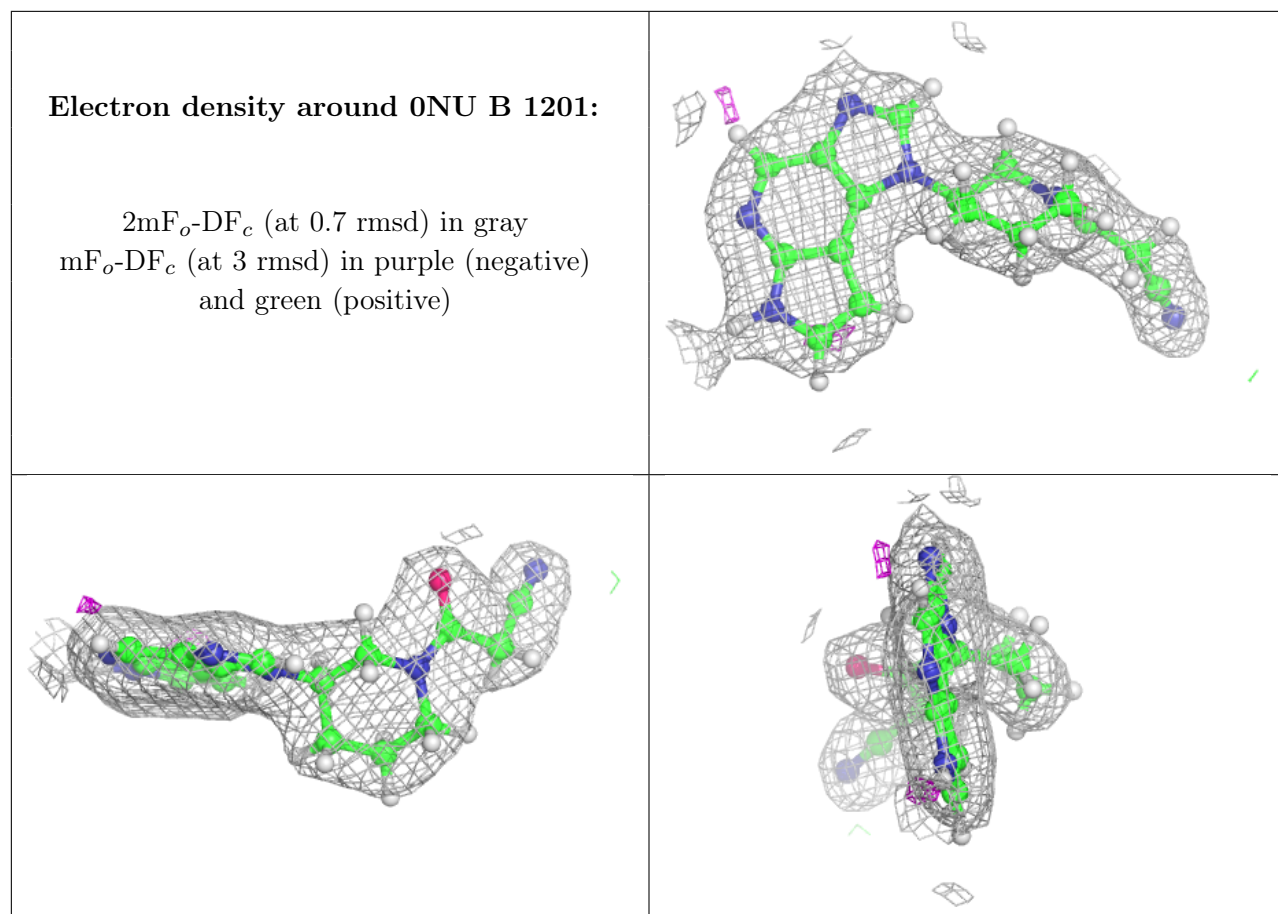
There are no monosaccharides in this entry.

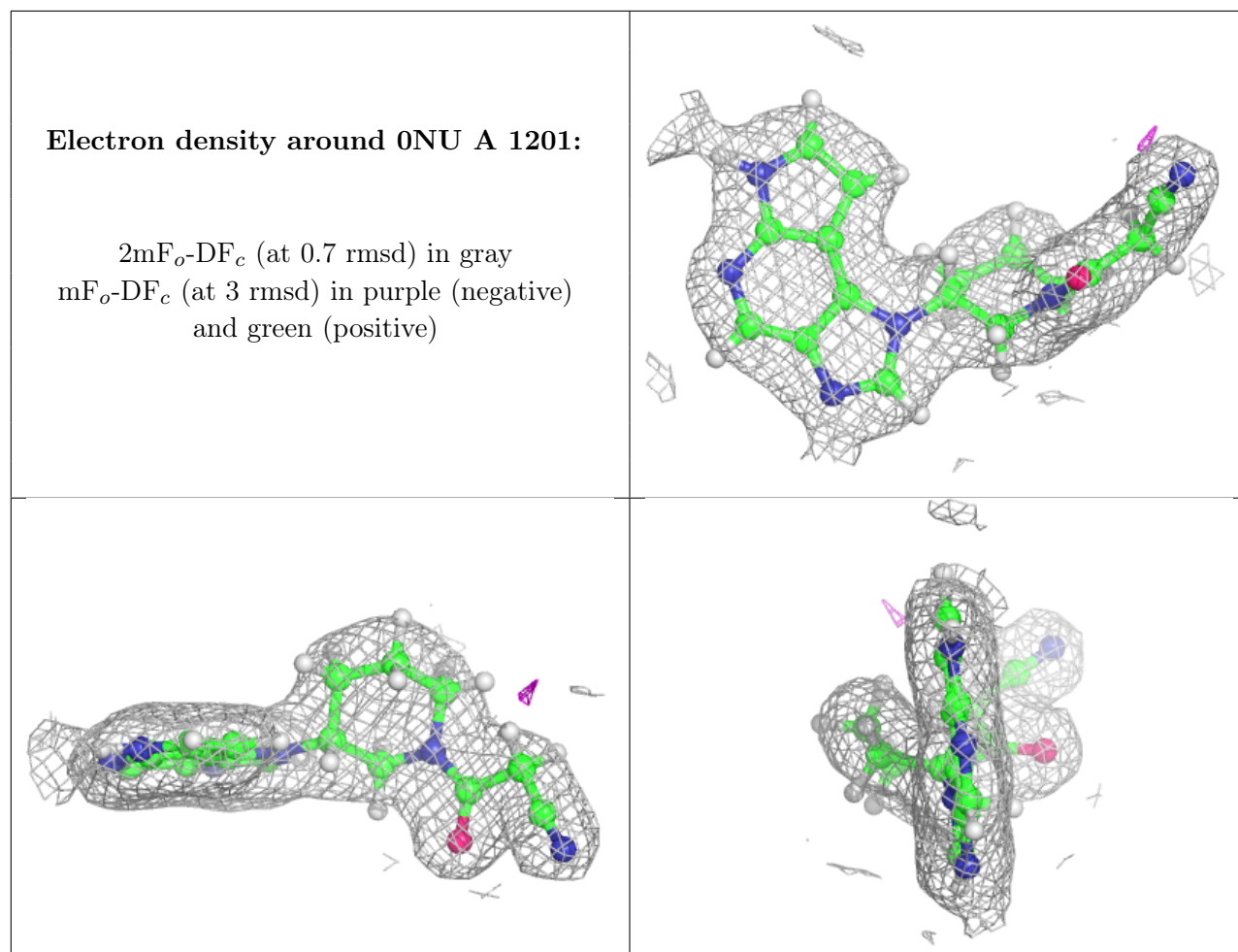
6.4 Ligands [i](#)

In the following table, the Atoms column lists the number of modelled atoms in the group and the number defined in the chemical component dictionary. The B-factors column lists the minimum, median, 95th percentile and maximum values of B factors of atoms in the group. The column labelled 'Q< 0.9' lists the number of atoms with occupancy less than 0.9.

Mol	Type	Chain	Res	Atoms	RSCC	RSR	B-factors(\AA^2)	Q<0.9
3	GOL	B	1202	6/6	0.67	0.35	20,20,20,20	0
2	0NU	B	1201	23/23	0.98	0.10	18,27,36,42	0
2	0NU	A	1201	23/23	0.98	0.10	15,24,31,31	0

The following is a graphical depiction of the model fit to experimental electron density of all instances of the Ligand of Interest. In addition, ligands with molecular weight > 250 and outliers as shown on the geometry validation Tables will also be included. Each fit is shown from different orientation to approximate a three-dimensional view.





6.5 Other polymers [\(i\)](#)

There are no such residues in this entry.