



Full wwPDB X-ray Structure Validation Report ⓘ

Oct 15, 2023 – 11:04 PM EDT

PDB ID : 8E6I
Title : X-ray structure of the Deinococcus radiodurans Nramp/MntH divalent transition metal transporter M230A mutant in an inward-open, manganese-bound state
Authors : Ray, S.; Gaudet, R.
Deposited on : 2022-08-22
Resolution : 2.52 Å(reported)

This is a Full wwPDB X-ray Structure Validation Report for a publicly released PDB entry.

We welcome your comments at validation@mail.wwpdb.org

A user guide is available at

<https://www.wwpdb.org/validation/2017/XrayValidationReportHelp>

with specific help available everywhere you see the ⓘ symbol.

The types of validation reports are described at

<http://www.wwpdb.org/validation/2017/FAQs#types>.

The following versions of software and data (see [references ⓘ](#)) were used in the production of this report:

MolProbity : 4.02b-467
Mogul : 1.8.5 (274361), CSD as541be (2020)
Xtriage (Phenix) : 1.13
EDS : 2.36
buster-report : 1.1.7 (2018)
Percentile statistics : 20191225.v01 (using entries in the PDB archive December 25th 2019)
Refmac : 5.8.0158
CCP4 : 7.0.044 (Gargrove)
Ideal geometry (proteins) : Engh & Huber (2001)
Ideal geometry (DNA, RNA) : Parkinson et al. (1996)
Validation Pipeline (wwPDB-VP) : 2.36

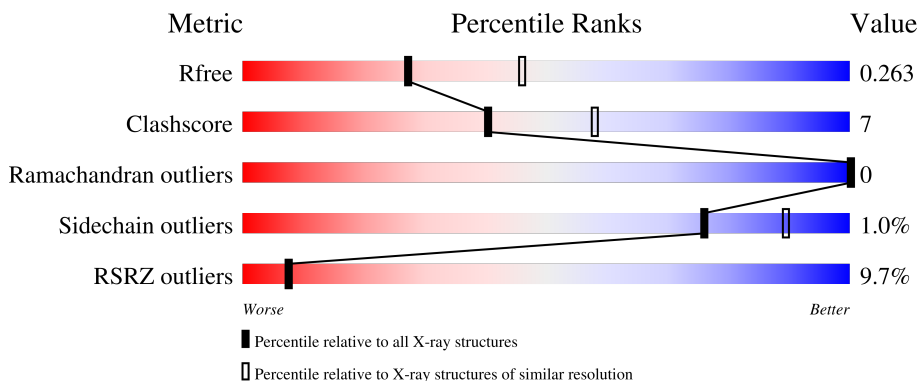
1 Overall quality at a glance

The following experimental techniques were used to determine the structure:

X-RAY DIFFRACTION

The reported resolution of this entry is 2.52 Å.

Percentile scores (ranging between 0-100) for global validation metrics of the entry are shown in the following graphic. The table shows the number of entries on which the scores are based.



Metric	Whole archive (#Entries)	Similar resolution (#Entries, resolution range(Å))
R_{free}	130704	5743 (2.54-2.50)
Clashscore	141614	6463 (2.54-2.50)
Ramachandran outliers	138981	6335 (2.54-2.50)
Sidechain outliers	138945	6337 (2.54-2.50)
RSRZ outliers	127900	5630 (2.54-2.50)

The table below summarises the geometric issues observed across the polymeric chains and their fit to the electron density. The red, orange, yellow and green segments of the lower bar indicate the fraction of residues that contain outliers for ≥ 3 , 2, 1 and 0 types of geometric quality criteria respectively. A grey segment represents the fraction of residues that are not modelled. The numeric value for each fraction is indicated below the corresponding segment, with a dot representing fractions $\leq 5\%$. The upper red bar (where present) indicates the fraction of residues that have poor fit to the electron density. The numeric value is given above the bar.

Mol	Chain	Length	Quality of chain
1	A	414	

The following table lists non-polymeric compounds, carbohydrate monomers and non-standard residues in protein, DNA, RNA chains that are outliers for geometric or electron-density-fit criteria:

Mol	Type	Chain	Res	Chirality	Geometry	Clashes	Electron density
4	OLC	A	511	-	-	-	X
4	OLC	A	514	-	-	-	X
4	OLC	A	515	-	-	-	X
4	OLC	A	517	-	-	-	X
4	OLC	A	523	-	-	-	X
5	PEG	A	528	-	-	-	X

2 Entry composition [i](#)

There are 6 unique types of molecules in this entry. The entry contains 3451 atoms, of which 0 are hydrogens and 0 are deuteriums.

In the tables below, the ZeroOcc column contains the number of atoms modelled with zero occupancy, the AltConf column contains the number of residues with at least one atom in alternate conformation and the Trace column contains the number of residues modelled with at most 2 atoms.

- Molecule 1 is a protein called Divalent metal cation transporter MntH.

Mol	Chain	Residues	Atoms					ZeroOcc	AltConf	Trace
			Total	C	N	O	S			
1	A	392	2934	1935	486	497	16	0	2	0

There are 10 discrepancies between the modelled and reference sequences:

Chain	Residue	Modelled	Actual	Comment	Reference
A	23	MET	-	expression tag	UNP Q9RTP8
A	24	HIS	-	expression tag	UNP Q9RTP8
A	25	HIS	-	expression tag	UNP Q9RTP8
A	26	HIS	-	expression tag	UNP Q9RTP8
A	27	HIS	-	expression tag	UNP Q9RTP8
A	28	HIS	-	expression tag	UNP Q9RTP8
A	29	HIS	-	expression tag	UNP Q9RTP8
A	30	HIS	-	expression tag	UNP Q9RTP8
A	31	HIS	-	expression tag	UNP Q9RTP8
A	230	ALA	MET	engineered mutation	UNP Q9RTP8

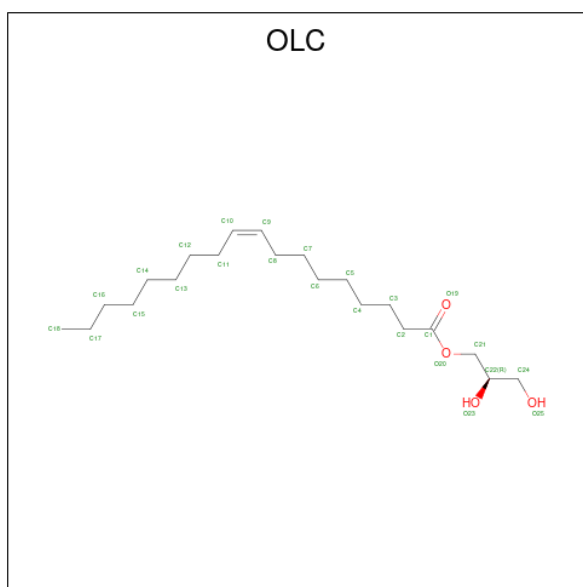
- Molecule 2 is MANGANESE (II) ION (three-letter code: MN) (formula: Mn).

Mol	Chain	Residues	Atoms		ZeroOcc	AltConf
2	A	2	Total	Mn	0	0
			2	2		

- Molecule 3 is CHLORIDE ION (three-letter code: CL) (formula: Cl).

Mol	Chain	Residues	Atoms		ZeroOcc	AltConf
3	A	2	Total	Cl	0	0
			2	2		

- Molecule 4 is (2R)-2,3-dihydroxypropyl (9Z)-octadec-9-enoate (three-letter code: OLC) (formula: C₂₁H₄₀O₄).



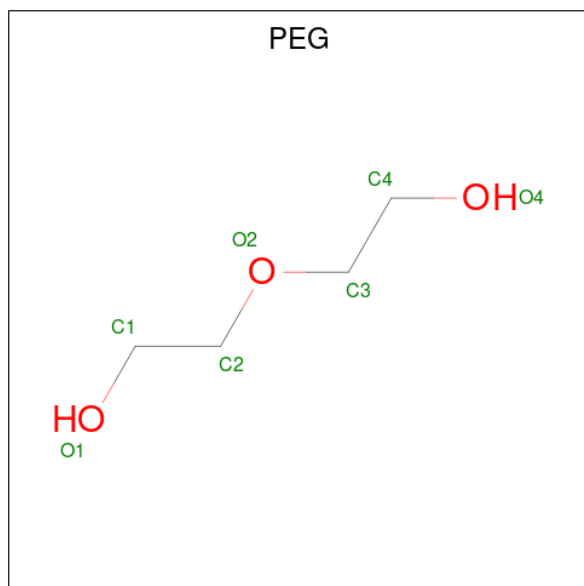
Mol	Chain	Residues	Atoms	ZeroOcc	AltConf
4	A	1	Total C O 22 18 4	0	0
4	A	1	Total C O 22 18 4	0	0
4	A	1	Total C O 25 21 4	0	0
4	A	1	Total C 18 18	0	0
4	A	1	Total C O 18 14 4	0	0
4	A	1	Total C O 25 21 4	0	0
4	A	1	Total C 17 17	0	0
4	A	1	Total C O 25 21 4	0	0
4	A	1	Total C O 25 21 4	0	0
4	A	1	Total C O 25 21 4	0	0
4	A	1	Total C O 25 21 4	0	0
4	A	1	Total C O 16 12 4	0	0
4	A	1	Total C O 25 21 4	0	0
4	A	1	Total C 14 14	0	0

Continued on next page...

Continued from previous page...

Mol	Chain	Residues	Atoms	ZeroOcc	AltConf
4	A	1	Total C 17 17	0	0
4	A	1	Total C O 25 21 4	0	0
4	A	1	Total C O 23 19 4	0	0
4	A	1	Total C O 25 21 4	0	0
4	A	1	Total C 8 8	0	0
4	A	1	Total C 9 9	0	0
4	A	1	Total C 8 8	0	0
4	A	1	Total C 11 11	0	0
4	A	1	Total C O 12 8 4	0	0

- Molecule 5 is DI(HYDROXYETHYL)ETHER (three-letter code: PEG) (formula: C₄H₁₀O₃).



Mol	Chain	Residues	Atoms	ZeroOcc	AltConf
5	A	1	Total C O 4 3 1	0	0


- Molecule 6 is water.

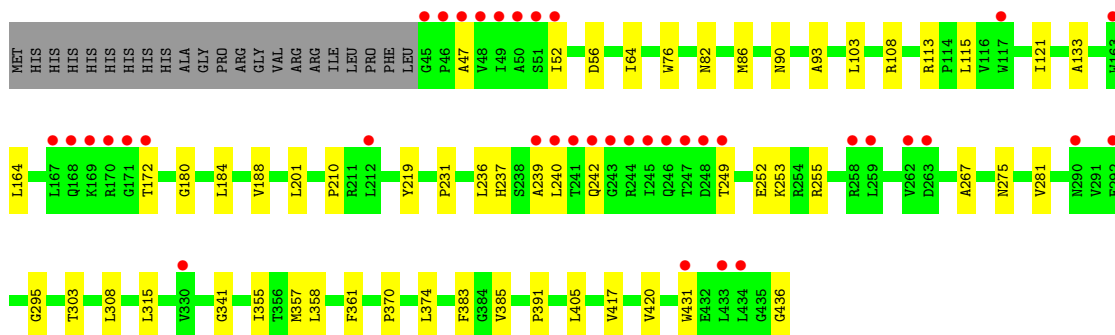
Mol	Chain	Residues	Atoms	ZeroOcc	AltConf
6	A	69	Total O 69 69	0	0

3 Residue-property plots [i](#)

These plots are drawn for all protein, RNA, DNA and oligosaccharide chains in the entry. The first graphic for a chain summarises the proportions of the various outlier classes displayed in the second graphic. The second graphic shows the sequence view annotated by issues in geometry and electron density. Residues are color-coded according to the number of geometric quality criteria for which they contain at least one outlier: green = 0, yellow = 1, orange = 2 and red = 3 or more. A red dot above a residue indicates a poor fit to the electron density ($RSRZ > 2$). Stretches of 2 or more consecutive residues without any outlier are shown as a green connector. Residues present in the sample, but not in the model, are shown in grey.

- Molecule 1: Divalent metal cation transporter MntH

Chain A: 



4 Data and refinement statistics

Property	Value	Source
Space group	P 2 21 21	Depositor
Cell constants a, b, c, α , β , γ	58.67Å 71.35Å 98.59Å 90.00° 90.00° 90.00°	Depositor
Resolution (Å)	45.32 – 2.52 45.32 – 2.52	Depositor EDS
% Data completeness (in resolution range)	99.9 (45.32-2.52) 99.9 (45.32-2.52)	Depositor EDS
R_{merge}	0.27	Depositor
R_{sym}	(Not available)	Depositor
$\langle I/\sigma(I) \rangle$ ¹	1.09 (at 2.51Å)	Xtrriage
Refinement program	PHENIX 1.20.1_4487	Depositor
R, R_{free}	0.225 , 0.266 0.223 , 0.263	Depositor DCC
R_{free} test set	1454 reflections (10.00%)	wwPDB-VP
Wilson B-factor (Å ²)	54.3	Xtrriage
Anisotropy	0.268	Xtrriage
Bulk solvent k_{sol} (e/Å ³), B_{sol} (Å ²)	0.31 , 64.7	EDS
L-test for twinning ²	$\langle L \rangle = 0.50$, $\langle L^2 \rangle = 0.34$	Xtrriage
Estimated twinning fraction	No twinning to report.	Xtrriage
F_o, F_c correlation	0.94	EDS
Total number of atoms	3451	wwPDB-VP
Average B, all atoms (Å ²)	66.0	wwPDB-VP

Xtrriage's analysis on translational NCS is as follows: *The largest off-origin peak in the Patterson function is 6.42% of the height of the origin peak. No significant pseudotranslation is detected.*

¹Intensities estimated from amplitudes.

²Theoretical values of $\langle |L| \rangle$, $\langle L^2 \rangle$ for acentric reflections are 0.5, 0.333 respectively for untwinned datasets, and 0.375, 0.2 for perfectly twinned datasets.

5 Model quality

5.1 Standard geometry

Bond lengths and bond angles in the following residue types are not validated in this section: OLC, MN, CL, PEG

The Z score for a bond length (or angle) is the number of standard deviations the observed value is removed from the expected value. A bond length (or angle) with $|Z| > 5$ is considered an outlier worth inspection. RMSZ is the root-mean-square of all Z scores of the bond lengths (or angles).

Mol	Chain	Bond lengths		Bond angles	
		RMSZ	# Z >5	RMSZ	# Z >5
1	A	0.24	0/3003	0.43	0/4111

There are no bond length outliers.

There are no bond angle outliers.

There are no chirality outliers.

There are no planarity outliers.

5.2 Too-close contacts

In the following table, the Non-H and H(model) columns list the number of non-hydrogen atoms and hydrogen atoms in the chain respectively. The H(added) column lists the number of hydrogen atoms added and optimized by MolProbity. The Clashes column lists the number of clashes within the asymmetric unit, whereas Symm-Clashes lists symmetry-related clashes.

Mol	Chain	Non-H	H(model)	H(added)	Clashes	Symm-Clashes
1	A	2934	0	3058	36	0
2	A	2	0	0	0	0
3	A	2	0	0	1	0
4	A	440	0	692	27	0
5	A	4	0	2	0	0
6	A	69	0	0	3	0
All	All	3451	0	3752	51	0

The all-atom clashscore is defined as the number of clashes found per 1000 atoms (including hydrogen atoms). The all-atom clashscore for this structure is 7.

All (51) close contacts within the same asymmetric unit are listed below, sorted by their clash magnitude.

Atom-1	Atom-2	Interatomic distance (Å)	Clash overlap (Å)
1:A:115:LEU:HD21	4:A:527:OLC:H2A	1.66	0.78
1:A:253:LYS:HB3	1:A:405:LEU:HD11	1.76	0.67
3:A:504:CL:CL	6:A:609:HOH:O	2.50	0.67
4:A:505:OLC:H14A	4:A:506:OLC:H11A	1.78	0.66
1:A:355:ILE:HG12	4:A:517:OLC:H18B	1.80	0.63
4:A:514:OLC:H15	4:A:515:OLC:H18	1.86	0.57
1:A:86:MET:O	1:A:90:ASN:ND2	2.30	0.57
1:A:47:ALA:HA	1:A:267:ALA:HB2	1.87	0.56
1:A:275:ASN:ND2	6:A:607:HOH:O	2.38	0.56
1:A:133:ALA:HA	1:A:374:LEU:HD22	1.88	0.55
1:A:237:HIS:HA	1:A:240:LEU:HD12	1.88	0.55
1:A:52:ILE:HG21	1:A:180:GLY:HA2	1.90	0.53
4:A:507:OLC:H14A	4:A:526:OLC:H13A	1.92	0.52
1:A:164:LEU:HD21	4:A:524:OLC:H15A	1.90	0.52
1:A:188:VAL:HG13	4:A:511:OLC:H8A	1.92	0.51
1:A:383:PHE:HD2	4:A:510:OLC:H18A	1.75	0.51
1:A:358:LEU:HD11	4:A:517:OLC:H18	1.91	0.51
1:A:52:ILE:HD11	1:A:184:LEU:HB2	1.93	0.51
1:A:108:ARG:NH1	1:A:341:GLY:O	2.42	0.50
1:A:420:VAL:HG11	4:A:521:OLC:H13	1.95	0.48
1:A:219:TYR:CG	4:A:514:OLC:H22	2.48	0.48
1:A:239:ALA:O	1:A:242:GLN:HG2	2.14	0.48
4:A:510:OLC:H18B	4:A:510:OLC:H15A	1.68	0.47
1:A:370:PRO:O	1:A:374:LEU:HG	2.15	0.47
4:A:510:OLC:H8A	4:A:510:OLC:H11	1.63	0.46
4:A:514:OLC:H12	4:A:514:OLC:H15A	1.65	0.46
1:A:103:LEU:HD11	1:A:391:PRO:HB2	1.98	0.46
4:A:512:OLC:H10	4:A:512:OLC:H13A	1.78	0.45
4:A:513:OLC:H8A	4:A:513:OLC:H11A	1.68	0.45
1:A:210:PRO:HD2	4:A:513:OLC:H21	1.97	0.45
1:A:308:LEU:HD13	1:A:315:LEU:HD12	1.99	0.45
1:A:249:THR:HG23	1:A:252:GLU:H	1.82	0.45
1:A:417:VAL:HG11	4:A:519:OLC:H13A	2.00	0.44
1:A:93:ALA:HB2	1:A:237:HIS:CE1	2.52	0.44
1:A:281:VAL:HG12	1:A:303:THR:HB	2.00	0.44
1:A:231:PRO:HG3	1:A:385:VAL:HG22	2.00	0.44
1:A:357:MET:HE3	1:A:361:PHE:HE2	1.83	0.43
1:A:431:TRP:CE2	1:A:436:GLY:HA3	2.53	0.43
4:A:515:OLC:H14	4:A:515:OLC:H11	1.88	0.43
4:A:519:OLC:H10	4:A:519:OLC:H7A	1.70	0.42
1:A:113:ARG:NH2	6:A:614:HOH:O	2.52	0.42
4:A:506:OLC:H5A	4:A:506:OLC:H8	1.64	0.42

Continued on next page...

Continued from previous page...

Atom-1	Atom-2	Interatomic distance (Å)	Clash overlap (Å)
1:A:172:THR:HB	4:A:524:OLC:H14A	2.02	0.42
4:A:519:OLC:H18A	4:A:519:OLC:H15A	1.82	0.41
1:A:236:LEU:O	1:A:239:ALA:N	2.51	0.41
1:A:76:TRP:CE2	1:A:210:PRO:HA	2.55	0.41
1:A:201:LEU:HD22	4:A:506:OLC:H9	2.02	0.41
4:A:522:OLC:H9	4:A:522:OLC:H6	1.79	0.41
1:A:121:ILE:HD12	4:A:515:OLC:H10	2.03	0.41
1:A:64:ILE:HG22	1:A:295:GLY:HA2	2.03	0.40
4:A:522:OLC:H2A	4:A:522:OLC:H21A	1.78	0.40

There are no symmetry-related clashes.

5.3 Torsion angles [i](#)

5.3.1 Protein backbone [i](#)

In the following table, the Percentiles column shows the percent Ramachandran outliers of the chain as a percentile score with respect to all X-ray entries followed by that with respect to entries of similar resolution.

The Analysed column shows the number of residues for which the backbone conformation was analysed, and the total number of residues.

Mol	Chain	Analysed	Favoured	Allowed	Outliers	Percentiles
1	A	392/414 (95%)	385 (98%)	7 (2%)	0	100 100

There are no Ramachandran outliers to report.

5.3.2 Protein sidechains [i](#)

In the following table, the Percentiles column shows the percent sidechain outliers of the chain as a percentile score with respect to all X-ray entries followed by that with respect to entries of similar resolution.

The Analysed column shows the number of residues for which the sidechain conformation was analysed, and the total number of residues.

Mol	Chain	Analysed	Rotameric	Outliers	Percentiles
1	A	298/321 (93%)	295 (99%)	3 (1%)	76 89

All (3) residues with a non-rotameric sidechain are listed below:

Mol	Chain	Res	Type
1	A	56	ASP
1	A	82	ASN
1	A	255	ARG

Sometimes sidechains can be flipped to improve hydrogen bonding and reduce clashes. All (2) such sidechains are listed below:

Mol	Chain	Res	Type
1	A	82	ASN
1	A	237	HIS

5.3.3 RNA [i](#)

There are no RNA molecules in this entry.

5.4 Non-standard residues in protein, DNA, RNA chains [i](#)

There are no non-standard protein/DNA/RNA residues in this entry.

5.5 Carbohydrates [i](#)

There are no monosaccharides in this entry.

5.6 Ligand geometry [i](#)

Of 28 ligands modelled in this entry, 4 are monoatomic - leaving 24 for Mogul analysis.

In the following table, the Counts columns list the number of bonds (or angles) for which Mogul statistics could be retrieved, the number of bonds (or angles) that are observed in the model and the number of bonds (or angles) that are defined in the Chemical Component Dictionary. The Link column lists molecule types, if any, to which the group is linked. The Z score for a bond length (or angle) is the number of standard deviations the observed value is removed from the expected value. A bond length (or angle) with $|Z| > 2$ is considered an outlier worth inspection. RMSZ is the root-mean-square of all Z scores of the bond lengths (or angles).

Mol	Type	Chain	Res	Link	Bond lengths			Bond angles		
					Counts	RMSZ	# Z > 2	Counts	RMSZ	# Z > 2
4	OLC	A	505	-	21,21,24	0.86	2 (9%)	22,22,25	1.01	1 (4%)
4	OLC	A	510	-	24,24,24	0.82	2 (8%)	25,25,25	0.98	1 (4%)

Mol	Type	Chain	Res	Link	Bond lengths			Bond angles		
					Counts	RMSZ	# Z > 2	Counts	RMSZ	# Z > 2
4	OLC	A	523	-	7,7,24	0.32	0	6,6,25	0.62	0
4	OLC	A	517	-	24,24,24	0.81	2 (8%)	25,25,25	0.96	1 (4%)
4	OLC	A	511	-	16,16,24	0.33	0	15,15,25	0.77	0
4	OLC	A	513	-	24,24,24	0.81	2 (8%)	25,25,25	0.88	1 (4%)
4	OLC	A	507	-	24,24,24	0.82	2 (8%)	25,25,25	0.91	1 (4%)
4	OLC	A	509	-	17,17,24	0.96	2 (11%)	18,18,25	1.12	1 (5%)
5	PEG	A	528	-	3,3,6	0.33	0	2,2,5	0.11	0
4	OLC	A	521	-	22,22,24	0.84	2 (9%)	23,23,25	0.98	1 (4%)
4	OLC	A	526	-	10,10,24	0.41	0	9,9,25	0.92	0
4	OLC	A	512	-	24,24,24	0.81	1 (4%)	25,25,25	1.01	1 (4%)
4	OLC	A	518	-	13,13,24	0.35	0	12,12,25	0.75	0
4	OLC	A	522	-	24,24,24	0.80	2 (8%)	25,25,25	0.98	1 (4%)
4	OLC	A	516	-	15,15,24	0.99	2 (13%)	16,16,25	1.04	1 (6%)
4	OLC	A	508	-	17,17,24	0.32	0	16,16,25	0.81	0
4	OLC	A	524	-	8,8,24	0.30	0	7,7,25	0.76	0
4	OLC	A	506	-	21,21,24	0.86	2 (9%)	22,22,25	0.94	1 (4%)
4	OLC	A	515	-	24,24,24	0.80	2 (8%)	25,25,25	0.96	1 (4%)
4	OLC	A	525	-	7,7,24	0.30	0	6,6,25	0.70	0
4	OLC	A	519	-	16,16,24	0.32	0	15,15,25	0.77	0
4	OLC	A	520	-	24,24,24	0.80	2 (8%)	25,25,25	0.95	1 (4%)
4	OLC	A	514	-	24,24,24	0.81	2 (8%)	25,25,25	0.93	1 (4%)
4	OLC	A	527	-	11,11,24	1.15	2 (18%)	12,12,25	1.17	1 (8%)

In the following table, the Chirals column lists the number of chiral outliers, the number of chiral centers analysed, the number of these observed in the model and the number defined in the Chemical Component Dictionary. Similar counts are reported in the Torsion and Rings columns. '-' means no outliers of that kind were identified.

Mol	Type	Chain	Res	Link	Chirals	Torsions	Rings
4	OLC	A	505	-	-	12/21/21/24	-
4	OLC	A	510	-	-	14/24/24/24	-
4	OLC	A	523	-	-	3/5/5/24	-
4	OLC	A	517	-	-	12/24/24/24	-
4	OLC	A	511	-	-	7/14/14/24	-
4	OLC	A	513	-	-	14/24/24/24	-
4	OLC	A	507	-	-	13/24/24/24	-
4	OLC	A	509	-	-	10/17/17/24	-
5	PEG	A	528	-	-	0/0/1/4	-

Continued on next page...

Continued from previous page...

Mol	Type	Chain	Res	Link	Chirals	Torsions	Rings
4	OLC	A	521	-	-	16/22/22/24	-
4	OLC	A	526	-	-	4/8/8/24	-
4	OLC	A	512	-	-	11/24/24/24	-
4	OLC	A	518	-	-	7/11/11/24	-
4	OLC	A	522	-	-	10/24/24/24	-
4	OLC	A	516	-	-	11/15/15/24	-
4	OLC	A	508	-	-	8/15/15/24	-
4	OLC	A	524	-	-	4/6/6/24	-
4	OLC	A	506	-	-	10/21/21/24	-
4	OLC	A	515	-	-	9/24/24/24	-
4	OLC	A	525	-	-	3/5/5/24	-
4	OLC	A	519	-	-	4/14/14/24	-
4	OLC	A	520	-	-	13/24/24/24	-
4	OLC	A	514	-	-	14/24/24/24	-
4	OLC	A	527	-	-	6/11/11/24	-

All (29) bond length outliers are listed below:

Mol	Chain	Res	Type	Atoms	Z	Observed(Å)	Ideal(Å)
4	A	512	OLC	O20-C1	2.56	1.40	1.33
4	A	507	OLC	O20-C1	2.48	1.40	1.33
4	A	509	OLC	O20-C1	2.47	1.40	1.33
4	A	505	OLC	O20-C1	2.47	1.40	1.33
4	A	515	OLC	O20-C1	2.44	1.40	1.33
4	A	527	OLC	O20-C1	2.44	1.40	1.33
4	A	510	OLC	O20-C1	2.44	1.40	1.33
4	A	521	OLC	O20-C1	2.44	1.40	1.33
4	A	516	OLC	O20-C1	2.43	1.40	1.33
4	A	514	OLC	O20-C1	2.43	1.40	1.33
4	A	522	OLC	O20-C1	2.42	1.40	1.33
4	A	506	OLC	O20-C1	2.41	1.40	1.33
4	A	517	OLC	O20-C1	2.40	1.40	1.33
4	A	520	OLC	O20-C1	2.40	1.40	1.33
4	A	513	OLC	O20-C1	2.39	1.40	1.33
4	A	521	OLC	O20-C21	-2.15	1.40	1.45
4	A	527	OLC	O20-C21	-2.14	1.40	1.45
4	A	516	OLC	O20-C21	-2.13	1.40	1.45
4	A	510	OLC	O20-C21	-2.10	1.40	1.45
4	A	506	OLC	O20-C21	-2.10	1.40	1.45

Continued on next page...

Continued from previous page...

Mol	Chain	Res	Type	Atoms	Z	Observed(Å)	Ideal(Å)
4	A	507	OLC	O20-C21	-2.10	1.40	1.45
4	A	517	OLC	O20-C21	-2.10	1.40	1.45
4	A	513	OLC	O20-C21	-2.09	1.40	1.45
4	A	520	OLC	O20-C21	-2.08	1.40	1.45
4	A	514	OLC	O20-C21	-2.08	1.40	1.45
4	A	505	OLC	O20-C21	-2.06	1.40	1.45
4	A	522	OLC	O20-C21	-2.04	1.40	1.45
4	A	509	OLC	O20-C21	-2.03	1.40	1.45
4	A	515	OLC	O20-C21	-2.02	1.40	1.45

All (15) bond angle outliers are listed below:

Mol	Chain	Res	Type	Atoms	Z	Observed(°)	Ideal(°)
4	A	527	OLC	O20-C1-C2	2.86	120.87	111.91
4	A	512	OLC	O20-C1-C2	2.84	120.83	111.91
4	A	509	OLC	O20-C1-C2	2.84	120.81	111.91
4	A	510	OLC	O20-C1-C2	2.73	120.47	111.91
4	A	505	OLC	O20-C1-C2	2.71	120.42	111.91
4	A	521	OLC	O20-C1-C2	2.70	120.37	111.91
4	A	516	OLC	O20-C1-C2	2.64	120.19	111.91
4	A	515	OLC	O20-C1-C2	2.63	120.15	111.91
4	A	514	OLC	O20-C1-C2	2.58	120.01	111.91
4	A	507	OLC	O20-C1-C2	2.56	119.95	111.91
4	A	517	OLC	O20-C1-C2	2.49	119.73	111.91
4	A	506	OLC	O20-C1-C2	2.49	119.73	111.91
4	A	522	OLC	O20-C1-C2	2.49	119.72	111.91
4	A	513	OLC	O20-C1-C2	2.48	119.68	111.91
4	A	520	OLC	O20-C1-C2	2.40	119.44	111.91

There are no chirality outliers.

All (215) torsion outliers are listed below:

Mol	Chain	Res	Type	Atoms
4	A	507	OLC	C21-C22-C24-O25
4	A	509	OLC	C21-C22-C24-O25
4	A	509	OLC	O23-C22-C24-O25
4	A	509	OLC	O20-C21-C22-C24
4	A	509	OLC	O20-C21-C22-O23
4	A	510	OLC	C21-C22-C24-O25
4	A	510	OLC	O23-C22-C24-O25
4	A	515	OLC	C2-C1-O20-C21
4	A	515	OLC	O19-C1-O20-C21

Continued on next page...

Continued from previous page...

Mol	Chain	Res	Type	Atoms
4	A	516	OLC	C21-C22-C24-O25
4	A	516	OLC	O20-C21-C22-C24
4	A	516	OLC	O20-C21-C22-O23
4	A	517	OLC	O20-C21-C22-O23
4	A	520	OLC	O20-C21-C22-C24
4	A	520	OLC	O20-C21-C22-O23
4	A	522	OLC	C2-C1-O20-C21
4	A	522	OLC	O19-C1-O20-C21
4	A	516	OLC	O19-C1-O20-C21
4	A	520	OLC	O19-C1-O20-C21
4	A	520	OLC	C2-C1-O20-C21
4	A	516	OLC	C2-C1-O20-C21
4	A	514	OLC	C12-C13-C14-C15
4	A	506	OLC	C2-C1-O20-C21
4	A	513	OLC	C2-C1-O20-C21
4	A	513	OLC	O20-C21-C22-O23
4	A	506	OLC	O19-C1-O20-C21
4	A	513	OLC	O19-C1-O20-C21
4	A	507	OLC	C2-C1-O20-C21
4	A	517	OLC	C2-C1-O20-C21
4	A	521	OLC	C2-C1-O20-C21
4	A	527	OLC	C2-C1-O20-C21
4	A	506	OLC	O20-C21-C22-C24
4	A	517	OLC	O20-C21-C22-C24
4	A	522	OLC	O20-C21-C22-C24
4	A	523	OLC	C4-C5-C6-C7
4	A	527	OLC	C1-C2-C3-C4
4	A	522	OLC	O20-C21-C22-O23
4	A	517	OLC	O19-C1-O20-C21
4	A	521	OLC	O19-C1-O20-C21
4	A	527	OLC	O19-C1-O20-C21
4	A	507	OLC	C1-C2-C3-C4
4	A	509	OLC	C1-C2-C3-C4
4	A	510	OLC	C1-C2-C3-C4
4	A	515	OLC	C1-C2-C3-C4
4	A	517	OLC	C1-C2-C3-C4
4	A	510	OLC	C2-C1-O20-C21
4	A	507	OLC	O19-C1-O20-C21
4	A	506	OLC	O20-C21-C22-O23
4	A	519	OLC	C6-C7-C8-C9
4	A	509	OLC	C3-C4-C5-C6
4	A	513	OLC	C13-C14-C15-C16

Continued on next page...

Continued from previous page...

Mol	Chain	Res	Type	Atoms
4	A	517	OLC	C13-C14-C15-C16
4	A	524	OLC	C12-C13-C14-C15
4	A	510	OLC	C3-C4-C5-C6
4	A	514	OLC	C13-C14-C15-C16
4	A	515	OLC	C4-C5-C6-C7
4	A	526	OLC	C11-C12-C13-C14
4	A	506	OLC	C3-C4-C5-C6
4	A	511	OLC	C4-C5-C6-C7
4	A	519	OLC	C13-C14-C15-C16
4	A	507	OLC	C4-C5-C6-C7
4	A	512	OLC	C13-C14-C15-C16
4	A	517	OLC	C11-C12-C13-C14
4	A	508	OLC	C14-C15-C16-C17
4	A	515	OLC	C2-C3-C4-C5
4	A	512	OLC	C14-C15-C16-C17
4	A	516	OLC	C4-C5-C6-C7
4	A	523	OLC	C5-C6-C7-C8
4	A	520	OLC	C21-C22-C24-O25
4	A	521	OLC	C21-C22-C24-O25
4	A	512	OLC	C12-C13-C14-C15
4	A	521	OLC	C11-C12-C13-C14
4	A	510	OLC	C6-C7-C8-C9
4	A	512	OLC	C6-C7-C8-C9
4	A	526	OLC	C10-C11-C12-C13
4	A	524	OLC	C13-C14-C15-C16
4	A	505	OLC	C4-C5-C6-C7
4	A	505	OLC	C2-C3-C4-C5
4	A	512	OLC	C5-C6-C7-C8
4	A	510	OLC	O19-C1-O20-C21
4	A	513	OLC	C4-C5-C6-C7
4	A	518	OLC	C14-C15-C16-C17
4	A	522	OLC	C12-C13-C14-C15
4	A	507	OLC	O23-C22-C24-O25
4	A	516	OLC	O23-C22-C24-O25
4	A	521	OLC	O23-C22-C24-O25
4	A	521	OLC	C12-C13-C14-C15
4	A	520	OLC	C10-C11-C12-C13
4	A	516	OLC	C2-C3-C4-C5
4	A	505	OLC	C1-C2-C3-C4
4	A	513	OLC	C11-C12-C13-C14
4	A	521	OLC	C2-C3-C4-C5
4	A	513	OLC	C14-C15-C16-C17

Continued on next page...

Continued from previous page...

Mol	Chain	Res	Type	Atoms
4	A	507	OLC	C3-C4-C5-C6
4	A	512	OLC	C2-C3-C4-C5
4	A	515	OLC	C14-C15-C16-C17
4	A	518	OLC	C10-C11-C12-C13
4	A	510	OLC	C13-C14-C15-C16
4	A	513	OLC	C2-C3-C4-C5
4	A	514	OLC	C14-C15-C16-C17
4	A	514	OLC	C1-C2-C3-C4
4	A	525	OLC	C13-C14-C15-C16
4	A	508	OLC	C3-C4-C5-C6
4	A	507	OLC	C12-C13-C14-C15
4	A	521	OLC	C5-C6-C7-C8
4	A	505	OLC	C11-C12-C13-C14
4	A	520	OLC	C13-C14-C15-C16
4	A	524	OLC	C11-C12-C13-C14
4	A	506	OLC	C4-C5-C6-C7
4	A	505	OLC	C10-C11-C12-C13
4	A	509	OLC	C6-C7-C8-C9
4	A	507	OLC	C13-C14-C15-C16
4	A	522	OLC	C11-C12-C13-C14
4	A	525	OLC	C10-C11-C12-C13
4	A	506	OLC	C10-C11-C12-C13
4	A	507	OLC	C5-C6-C7-C8
4	A	517	OLC	C15-C16-C17-C18
4	A	520	OLC	O23-C22-C24-O25
4	A	514	OLC	C10-C11-C12-C13
4	A	521	OLC	C10-C11-C12-C13
4	A	521	OLC	C6-C7-C8-C9
4	A	517	OLC	C2-C3-C4-C5
4	A	513	OLC	C3-C4-C5-C6
4	A	525	OLC	C11-C12-C13-C14
4	A	509	OLC	C2-C1-O20-C21
4	A	508	OLC	C4-C5-C6-C7
4	A	514	OLC	C15-C16-C17-C18
4	A	519	OLC	C9-C10-C11-C12
4	A	507	OLC	C11-C12-C13-C14
4	A	521	OLC	C13-C14-C15-C16
4	A	505	OLC	C5-C6-C7-C8
4	A	518	OLC	C15-C16-C17-C18
4	A	510	OLC	C2-C3-C4-C5
4	A	510	OLC	C14-C15-C16-C17
4	A	520	OLC	C15-C16-C17-C18

Continued on next page...

Continued from previous page...

Mol	Chain	Res	Type	Atoms
4	A	511	OLC	C3-C4-C5-C6
4	A	512	OLC	C7-C8-C9-C10
4	A	519	OLC	C7-C8-C9-C10
4	A	511	OLC	C5-C6-C7-C8
4	A	516	OLC	C5-C6-C7-C8
4	A	505	OLC	O20-C21-C22-C24
4	A	521	OLC	O20-C21-C22-C24
4	A	514	OLC	C2-C3-C4-C5
4	A	523	OLC	C3-C4-C5-C6
4	A	507	OLC	C6-C7-C8-C9
4	A	509	OLC	O19-C1-O20-C21
4	A	506	OLC	O20-C1-C2-C3
4	A	510	OLC	C10-C11-C12-C13
4	A	512	OLC	C11-C12-C13-C14
4	A	520	OLC	C12-C13-C14-C15
4	A	521	OLC	C4-C5-C6-C7
4	A	527	OLC	C2-C3-C4-C5
4	A	516	OLC	C3-C4-C5-C6
4	A	508	OLC	C13-C14-C15-C16
4	A	505	OLC	O20-C21-C22-O23
4	A	521	OLC	O20-C21-C22-O23
4	A	521	OLC	C1-C2-C3-C4
4	A	512	OLC	C3-C4-C5-C6
4	A	508	OLC	C6-C7-C8-C9
4	A	514	OLC	C6-C7-C8-C9
4	A	520	OLC	C1-C2-C3-C4
4	A	505	OLC	C3-C4-C5-C6
4	A	506	OLC	C5-C6-C7-C8
4	A	514	OLC	O19-C1-O20-C21
4	A	522	OLC	C7-C8-C9-C10
4	A	509	OLC	C4-C5-C6-C7
4	A	514	OLC	C2-C1-O20-C21
4	A	515	OLC	C10-C11-C12-C13
4	A	517	OLC	C10-C11-C12-C13
4	A	526	OLC	C15-C16-C17-C18
4	A	508	OLC	C9-C10-C11-C12
4	A	511	OLC	C9-C10-C11-C12
4	A	513	OLC	O20-C21-C22-C24
4	A	527	OLC	O20-C21-C22-C24
4	A	513	OLC	C12-C13-C14-C15
4	A	507	OLC	C9-C10-C11-C12
4	A	514	OLC	C9-C10-C11-C12

Continued on next page...

Continued from previous page...

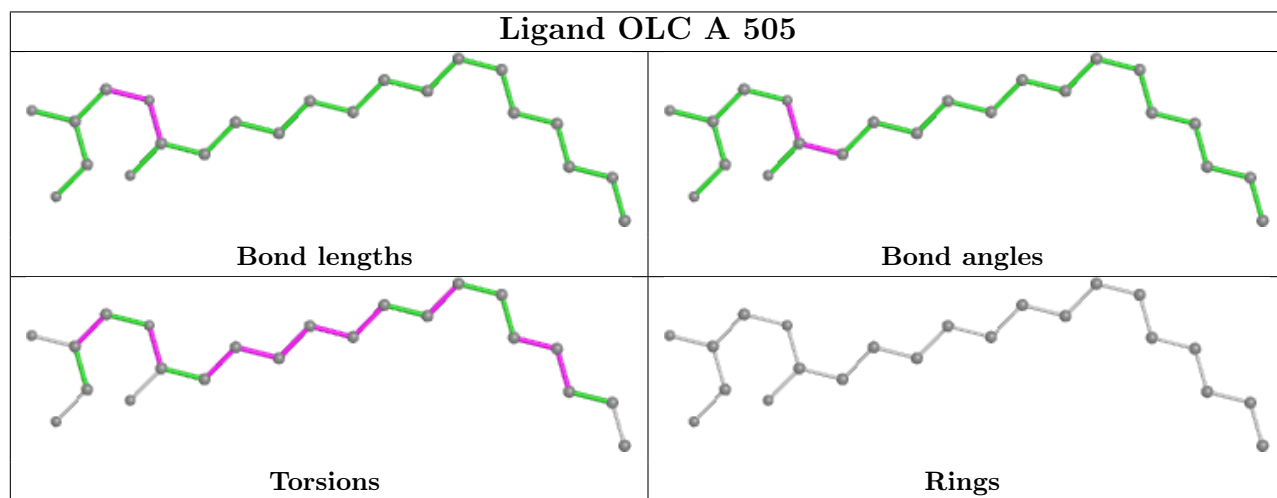
Mol	Chain	Res	Type	Atoms
4	A	521	OLC	C9-C10-C11-C12
4	A	511	OLC	C12-C13-C14-C15
4	A	518	OLC	C13-C14-C15-C16
4	A	524	OLC	C14-C15-C16-C17
4	A	522	OLC	C15-C16-C17-C18
4	A	511	OLC	C7-C8-C9-C10
4	A	508	OLC	C5-C6-C7-C8
4	A	511	OLC	C11-C12-C13-C14
4	A	505	OLC	C7-C8-C9-C10
4	A	514	OLC	C7-C8-C9-C10
4	A	526	OLC	C9-C10-C11-C12
4	A	513	OLC	C15-C16-C17-C18
4	A	510	OLC	C15-C16-C17-C18
4	A	505	OLC	O19-C1-O20-C21
4	A	514	OLC	O20-C1-C2-C3
4	A	512	OLC	C9-C10-C11-C12
4	A	520	OLC	C9-C10-C11-C12
4	A	505	OLC	C2-C1-O20-C21
4	A	512	OLC	C15-C16-C17-C18
4	A	508	OLC	C7-C8-C9-C10
4	A	522	OLC	C9-C10-C11-C12
4	A	517	OLC	O20-C1-C2-C3
4	A	510	OLC	O20-C1-C2-C3
4	A	527	OLC	O20-C21-C22-O23
4	A	518	OLC	C9-C10-C11-C12
4	A	513	OLC	O20-C1-C2-C3
4	A	506	OLC	O19-C1-C2-C3
4	A	515	OLC	O20-C1-C2-C3
4	A	514	OLC	C3-C4-C5-C6
4	A	520	OLC	C14-C15-C16-C17
4	A	518	OLC	C11-C12-C13-C14
4	A	513	OLC	O19-C1-C2-C3
4	A	517	OLC	O19-C1-C2-C3
4	A	518	OLC	C7-C8-C9-C10
4	A	510	OLC	O19-C1-C2-C3
4	A	516	OLC	O20-C1-C2-C3
4	A	522	OLC	C13-C14-C15-C16
4	A	515	OLC	O19-C1-C2-C3

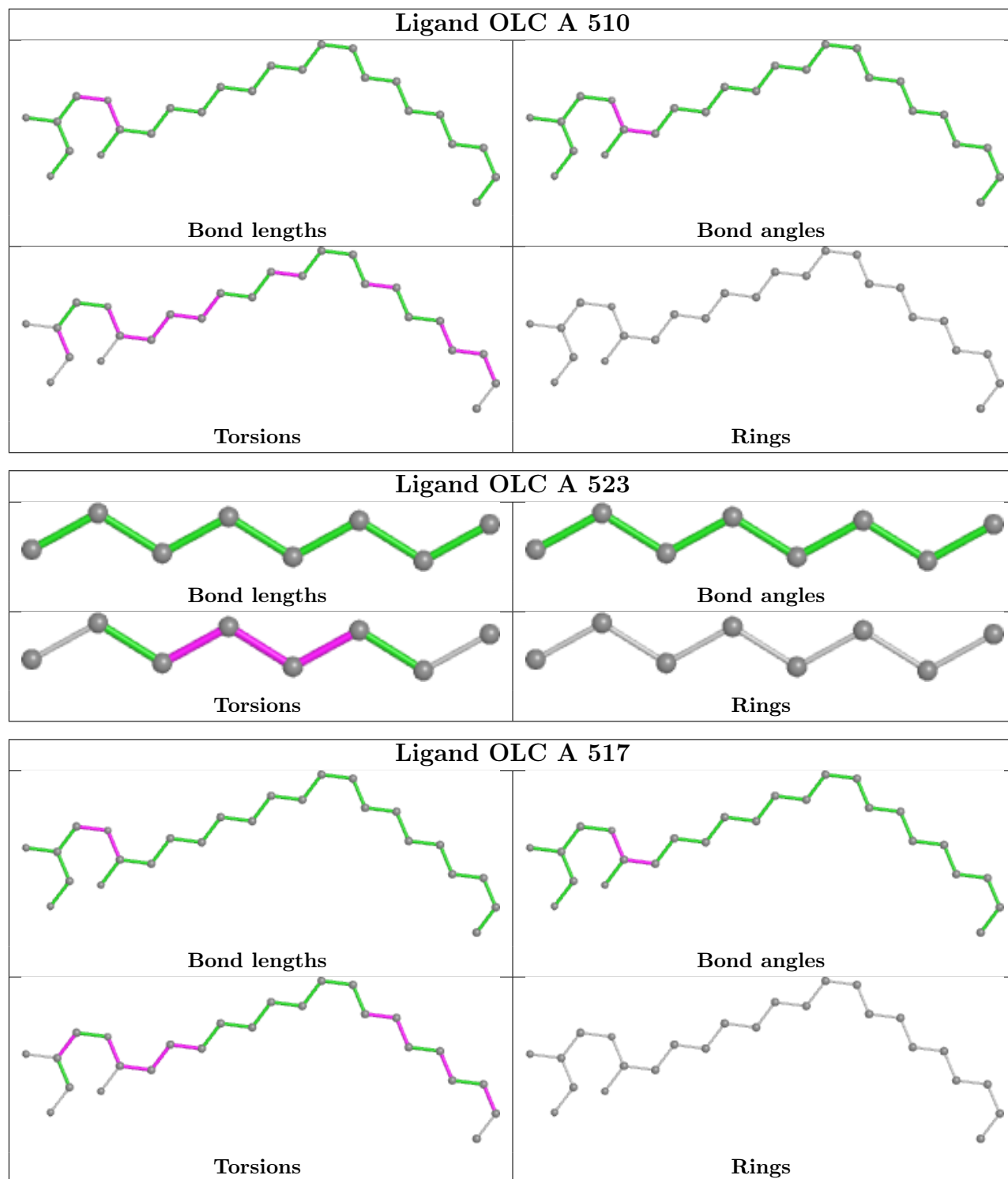
There are no ring outliers.

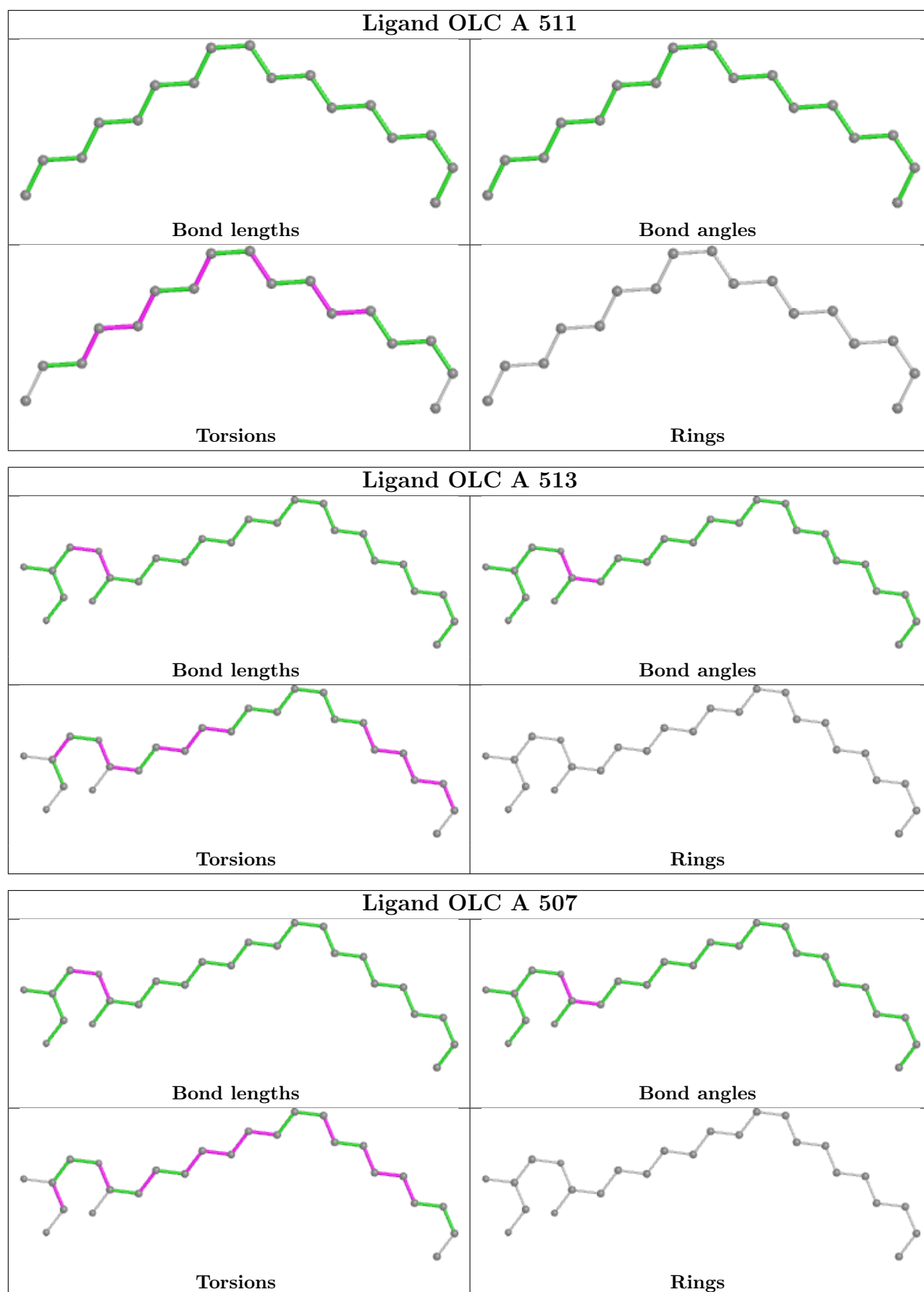
16 monomers are involved in 27 short contacts:

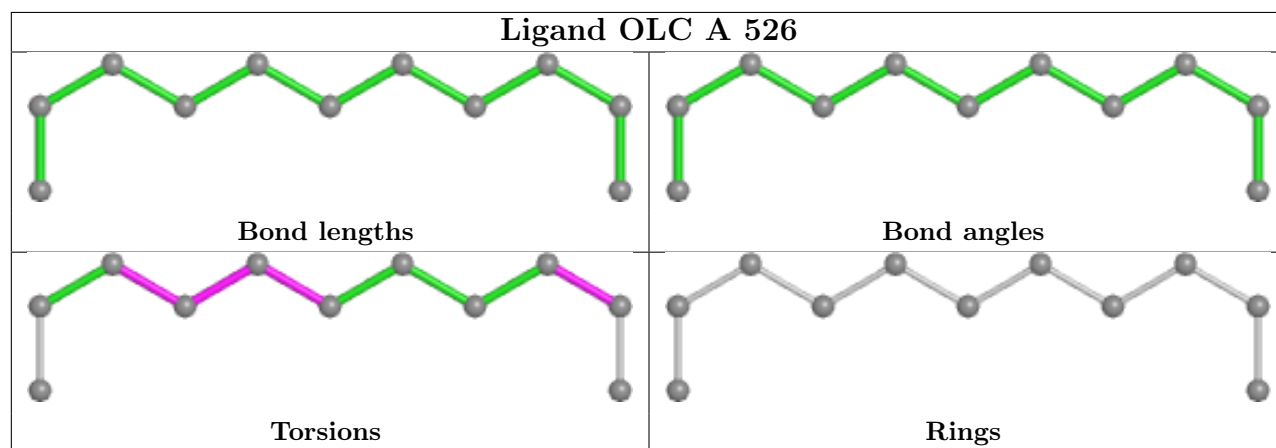
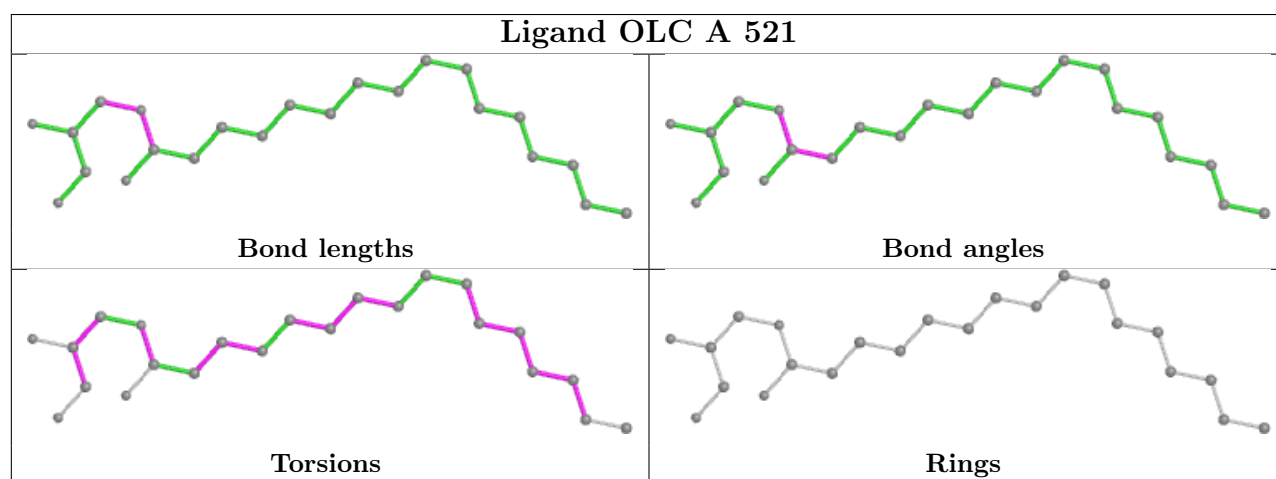
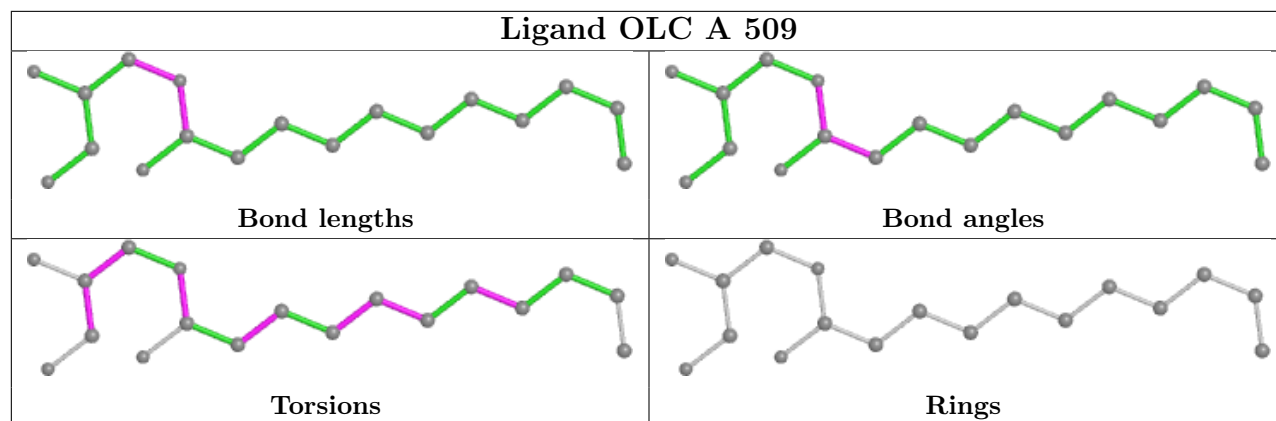
Mol	Chain	Res	Type	Clashes	Symm-Clashes
4	A	505	OLC	1	0
4	A	510	OLC	3	0
4	A	517	OLC	2	0
4	A	511	OLC	1	0
4	A	513	OLC	2	0
4	A	507	OLC	1	0
4	A	521	OLC	1	0
4	A	526	OLC	1	0
4	A	512	OLC	1	0
4	A	522	OLC	2	0
4	A	524	OLC	2	0
4	A	506	OLC	3	0
4	A	515	OLC	3	0
4	A	519	OLC	3	0
4	A	514	OLC	3	0
4	A	527	OLC	1	0

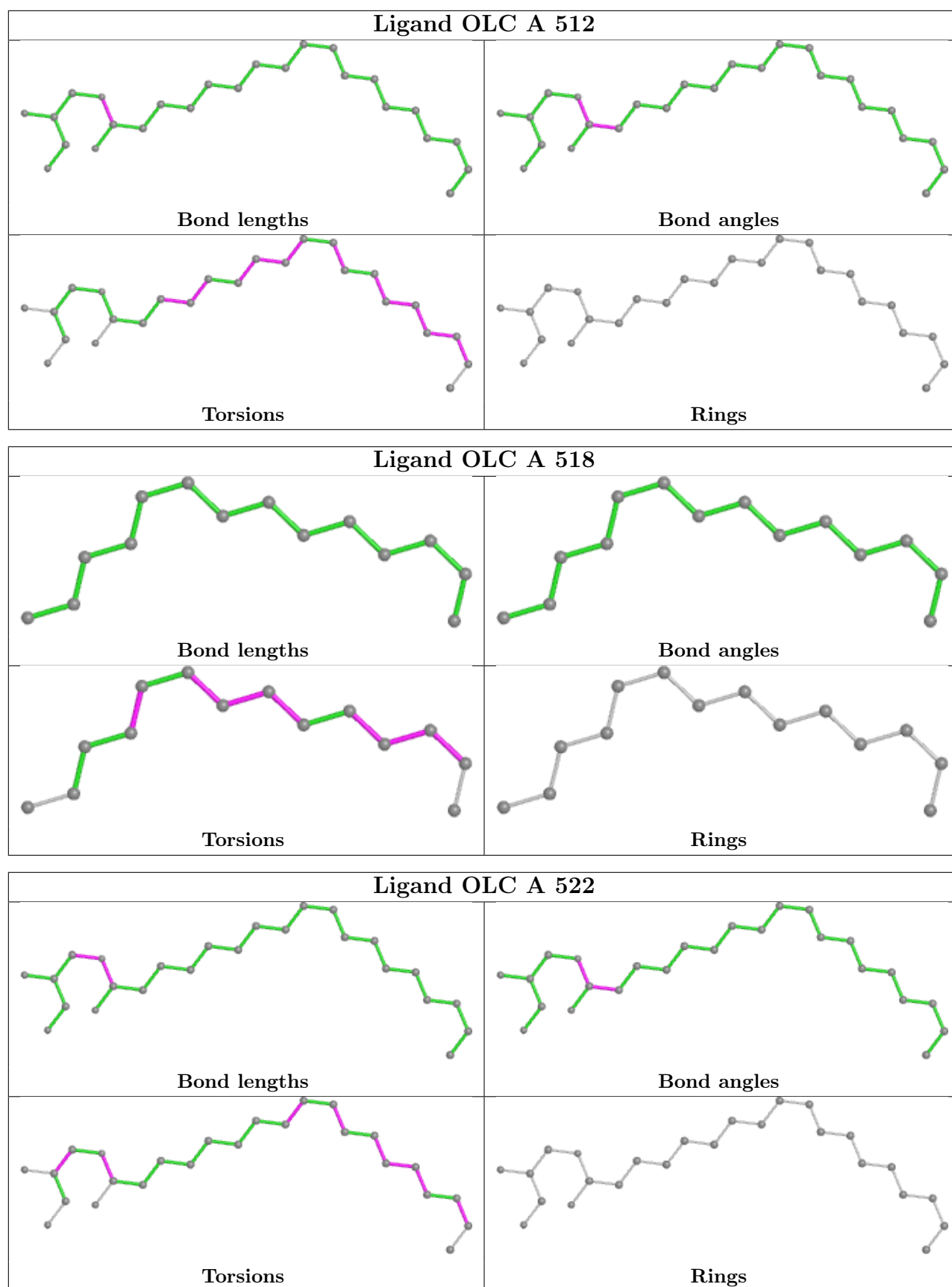
The following is a two-dimensional graphical depiction of Mogul quality analysis of bond lengths, bond angles, torsion angles, and ring geometry for all instances of the Ligand of Interest. In addition, ligands with molecular weight > 250 and outliers as shown on the validation Tables will also be included. For torsion angles, if less than 5% of the Mogul distribution of torsion angles is within 10 degrees of the torsion angle in question, then that torsion angle is considered an outlier. Any bond that is central to one or more torsion angles identified as an outlier by Mogul will be highlighted in the graph. For rings, the root-mean-square deviation (RMSD) between the ring in question and similar rings identified by Mogul is calculated over all ring torsion angles. If the average RMSD is greater than 60 degrees and the minimal RMSD between the ring in question and any Mogul-identified rings is also greater than 60 degrees, then that ring is considered an outlier. The outliers are highlighted in purple. The color gray indicates Mogul did not find sufficient equivalents in the CSD to analyse the geometry.

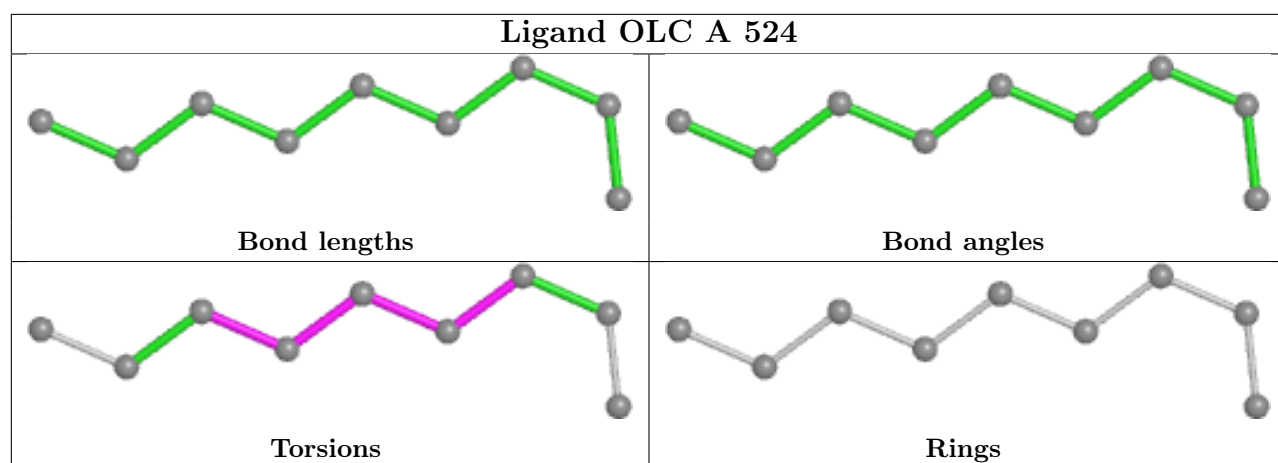
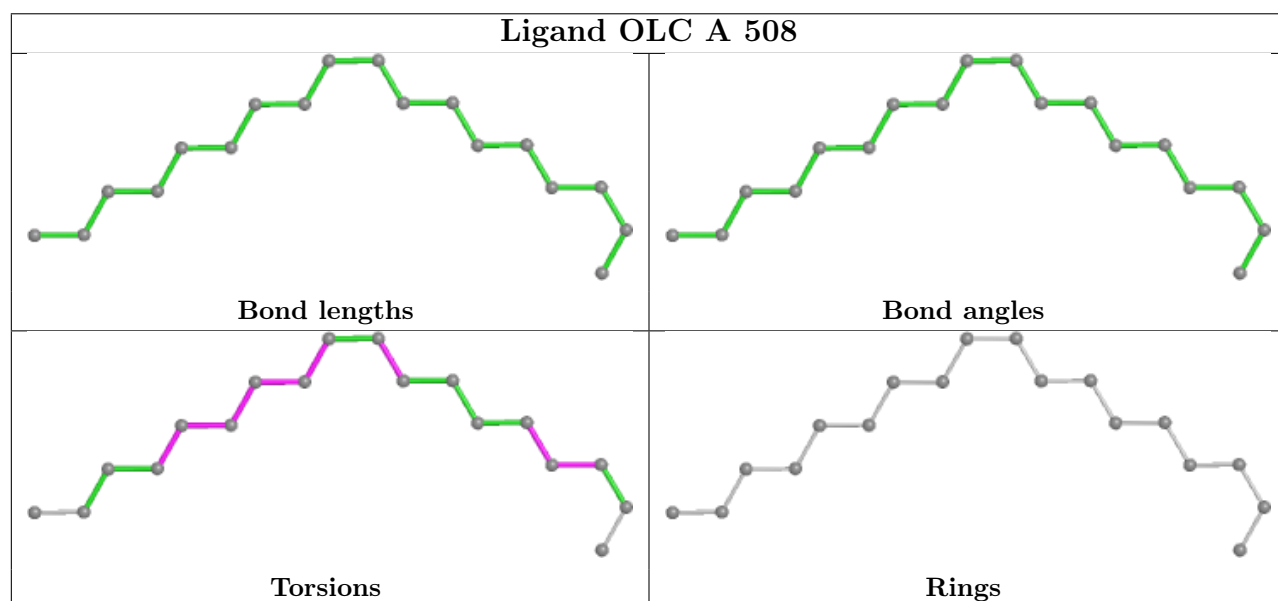
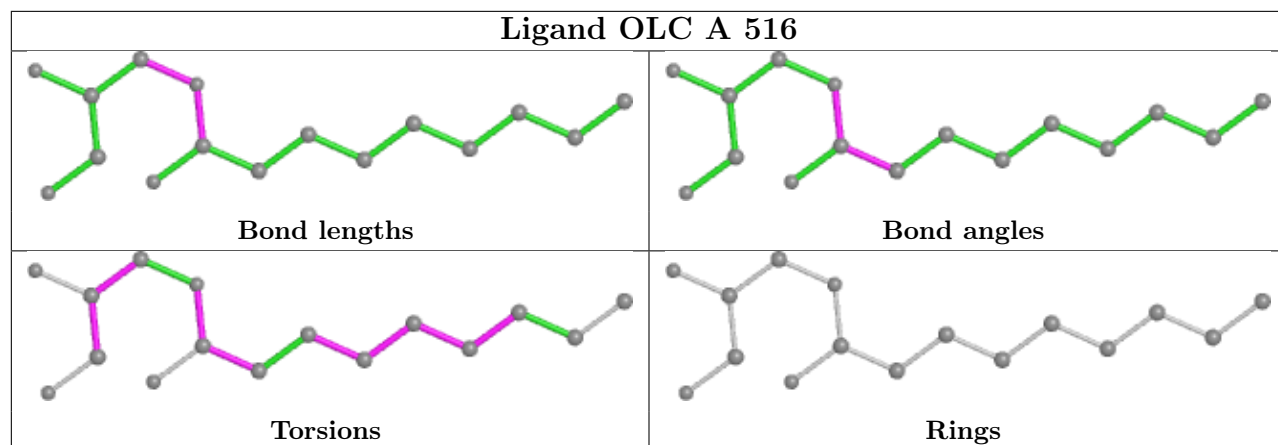


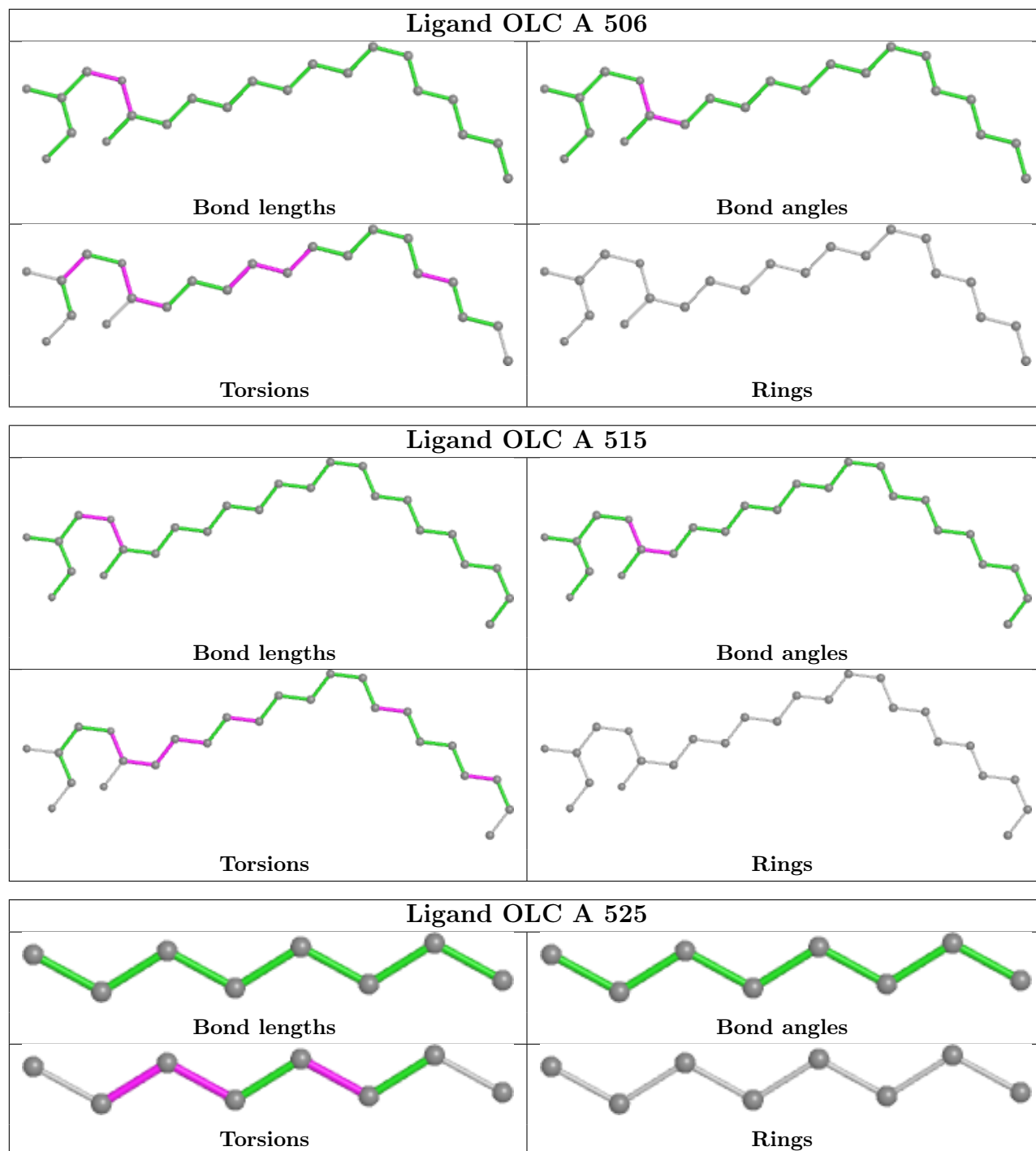


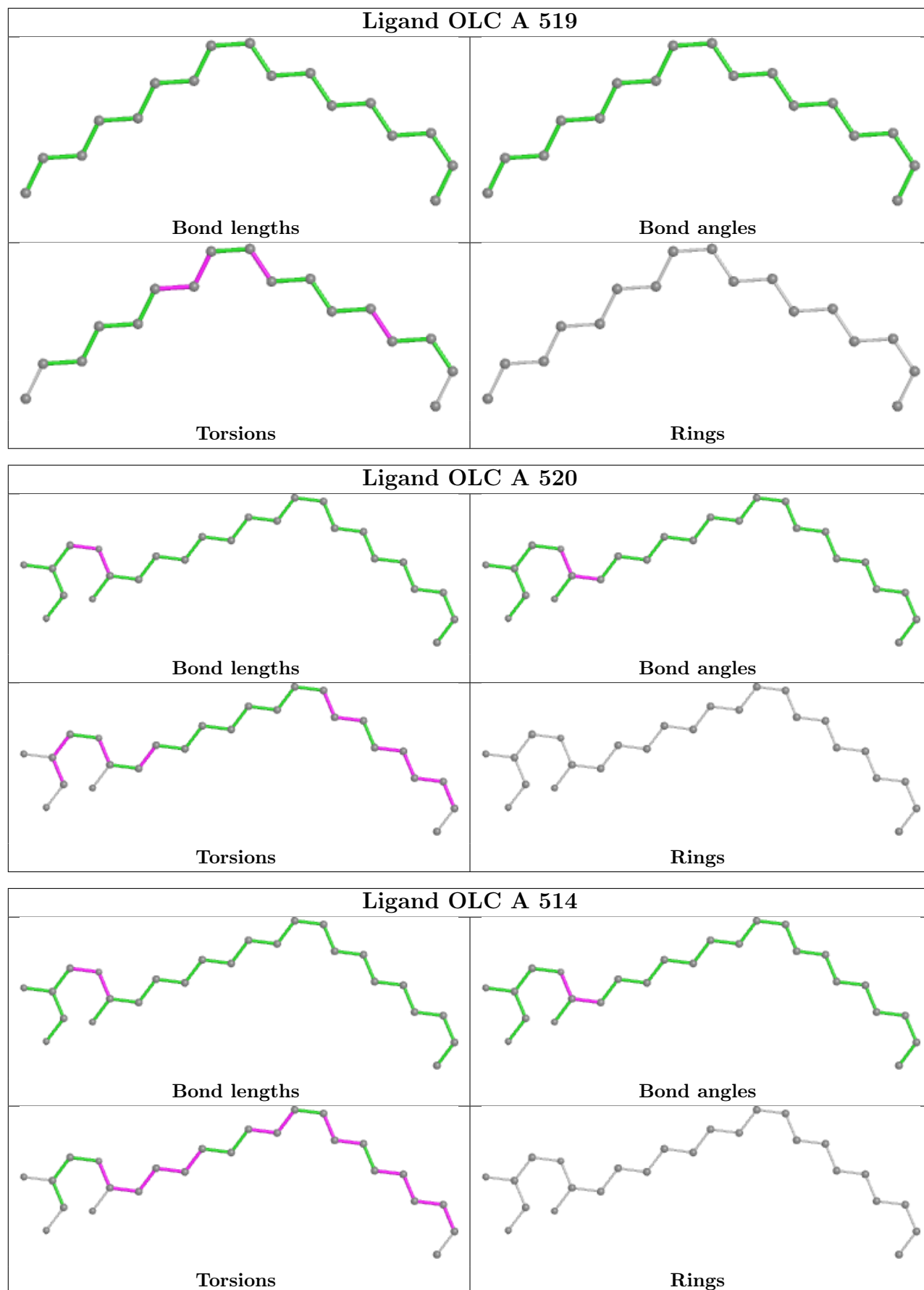


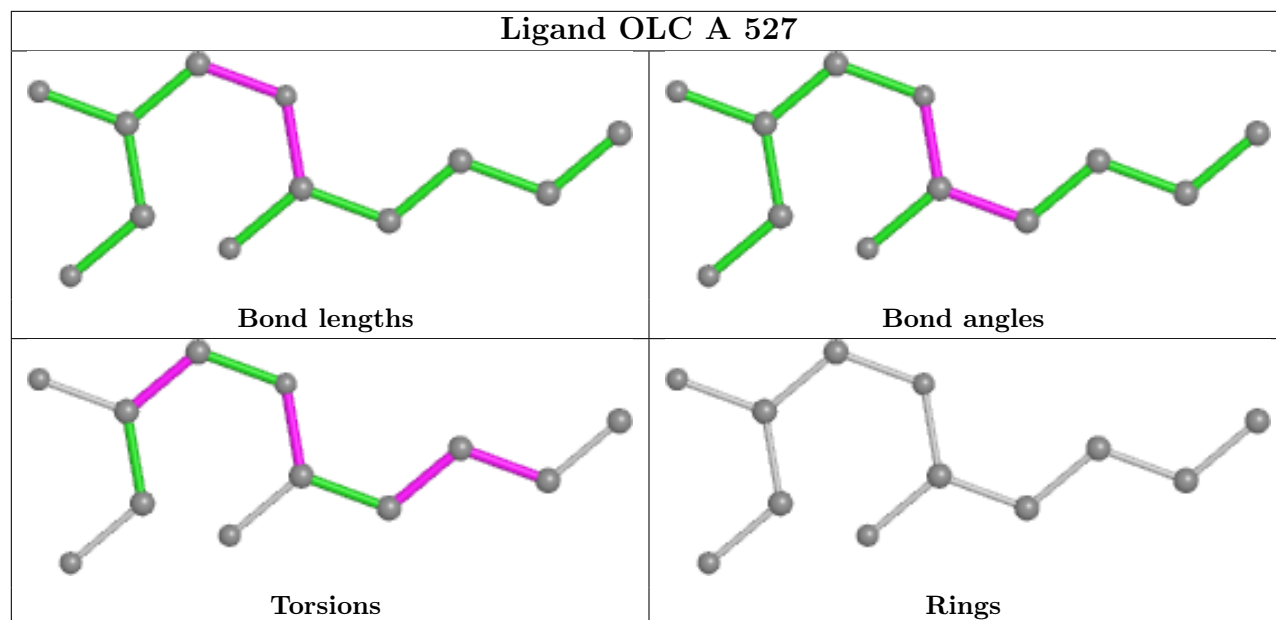












5.7 Other polymers [i](#)

There are no such residues in this entry.

5.8 Polymer linkage issues [i](#)

There are no chain breaks in this entry.

6 Fit of model and data

6.1 Protein, DNA and RNA chains

In the following table, the column labelled ‘#RSRZ> 2’ contains the number (and percentage) of RSRZ outliers, followed by percent RSRZ outliers for the chain as percentile scores relative to all X-ray entries and entries of similar resolution. The OWAB column contains the minimum, median, 95th percentile and maximum values of the occupancy-weighted average B-factor per residue. The column labelled ‘Q< 0.9’ lists the number of (and percentage) of residues with an average occupancy less than 0.9.

Mol	Chain	Analysed	<RSRZ>	#RSRZ>2	OWAB(Å ²)	Q<0.9
1	A	392/414 (94%)	0.66	38 (9%) 7 7	39, 56, 127, 195	0

All (38) RSRZ outliers are listed below:

Mol	Chain	Res	Type	RSRZ
1	A	46	PRO	10.6
1	A	244	ARG	10.4
1	A	48	VAL	10.4
1	A	247	THR	9.9
1	A	49	ILE	9.2
1	A	243	GLY	8.3
1	A	246	GLN	8.0
1	A	50	ALA	7.9
1	A	47	ALA	7.7
1	A	241	THR	7.2
1	A	245	ILE	6.5
1	A	239	ALA	6.4
1	A	434	LEU	5.5
1	A	242	GLN	5.2
1	A	431	TRP	4.9
1	A	248	ASP	4.7
1	A	433	LEU	4.5
1	A	171	GLY	4.4
1	A	51	SER	4.4
1	A	45	GLY	4.0
1	A	249	THR	3.9
1	A	168	GLN	3.9
1	A	170	ARG	3.6
1	A	240	LEU	3.5
1	A	172	THR	3.1
1	A	292	GLU	3.0
1	A	163	TRP	3.0

Continued on next page...

Continued from previous page...

Mol	Chain	Res	Type	RSRZ
1	A	262	VAL	3.0
1	A	169	LYS	2.8
1	A	117[A]	TRP	2.8
1	A	167	LEU	2.7
1	A	52	ILE	2.5
1	A	212	LEU	2.5
1	A	259	LEU	2.5
1	A	330	VAL	2.4
1	A	263	ASP	2.3
1	A	290	ASN	2.3
1	A	258	ARG	2.0

6.2 Non-standard residues in protein, DNA, RNA chains [i](#)

There are no non-standard protein/DNA/RNA residues in this entry.

6.3 Carbohydrates [i](#)

There are no monosaccharides in this entry.

6.4 Ligands [i](#)

In the following table, the Atoms column lists the number of modelled atoms in the group and the number defined in the chemical component dictionary. The B-factors column lists the minimum, median, 95th percentile and maximum values of B factors of atoms in the group. The column labelled 'Q<0.9' lists the number of atoms with occupancy less than 0.9.

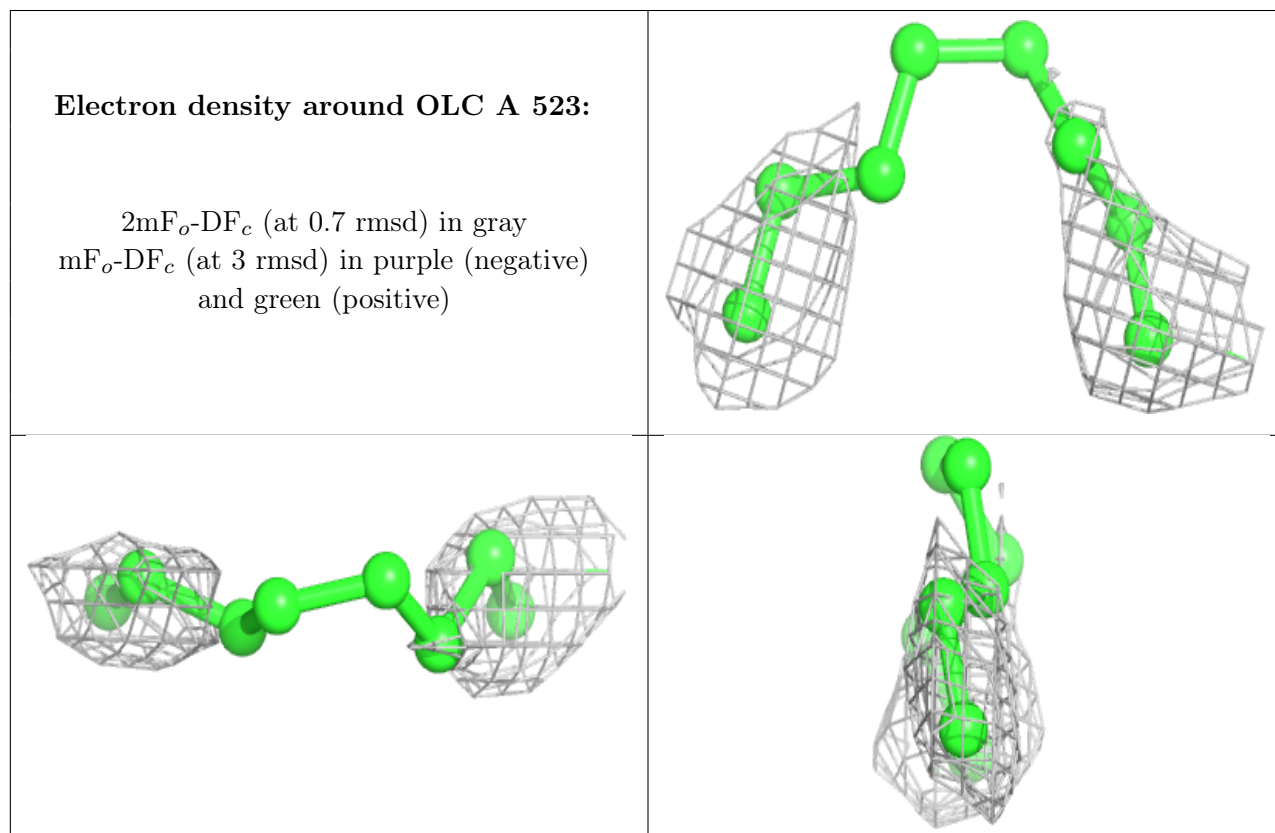
Mol	Type	Chain	Res	Atoms	RSCC	RSR	B-factors(Å ²)	Q<0.9
4	OLC	A	523	8/25	0.38	0.41	81,92,95,96	0
4	OLC	A	511	17/25	0.50	0.45	63,75,86,89	0
4	OLC	A	520	25/25	0.52	0.33	57,69,83,86	0
4	OLC	A	514	25/25	0.56	0.45	57,72,76,84	0
4	OLC	A	515	25/25	0.59	0.45	67,74,78,84	0
4	OLC	A	517	25/25	0.60	0.48	72,78,89,99	0
4	OLC	A	512	25/25	0.61	0.27	77,81,104,109	0
4	OLC	A	513	25/25	0.64	0.35	65,94,100,101	0
4	OLC	A	506	22/25	0.66	0.39	62,68,73,76	0
4	OLC	A	519	17/25	0.67	0.31	72,80,81,84	0
5	PEG	A	528	4/7	0.67	0.49	67,69,69,70	0
4	OLC	A	508	18/25	0.68	0.37	55,64,69,71	0

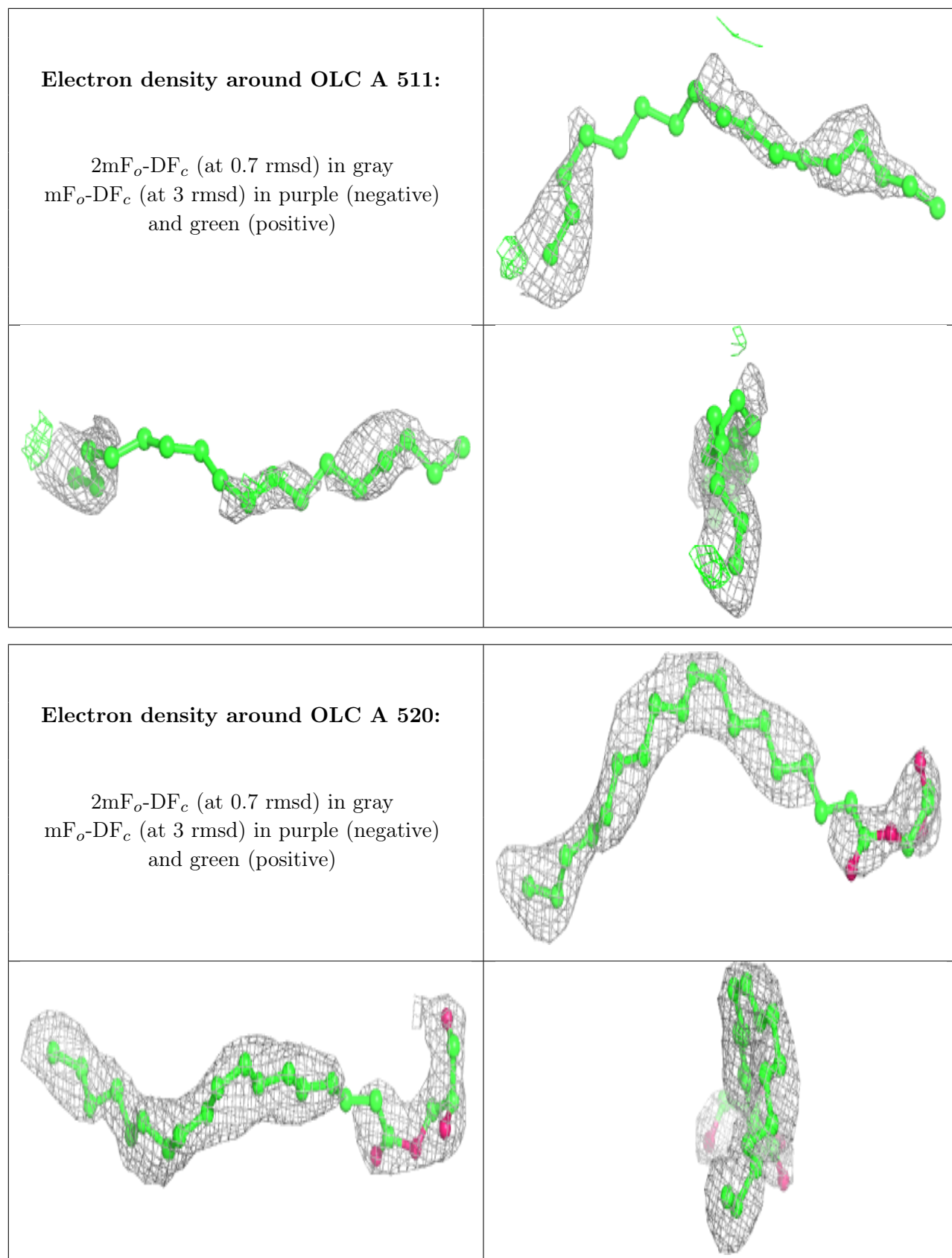
Continued on next page...

Continued from previous page...

Mol	Type	Chain	Res	Atoms	RSCC	RSR	B-factors(\AA^2)	Q<0.9
4	OLC	A	526	11/25	0.71	0.40	65,69,73,73	0
4	OLC	A	510	25/25	0.71	0.31	49,78,102,106	0
4	OLC	A	524	9/25	0.72	0.32	71,77,85,86	0
4	OLC	A	518	14/25	0.72	0.29	71,82,85,85	0
4	OLC	A	507	25/25	0.72	0.33	59,71,97,99	0
4	OLC	A	522	25/25	0.73	0.29	62,73,83,92	0
4	OLC	A	525	8/25	0.73	0.35	61,63,66,67	0
4	OLC	A	516	16/25	0.76	0.24	78,84,91,98	0
4	OLC	A	505	22/25	0.78	0.33	52,65,77,78	0
4	OLC	A	521	23/25	0.81	0.24	68,76,84,86	0
4	OLC	A	527	12/25	0.83	0.22	62,65,66,68	0
4	OLC	A	509	18/25	0.84	0.21	88,95,102,103	0
2	MN	A	501	1/1	0.86	0.05	78,78,78,78	1
2	MN	A	502	1/1	0.93	0.11	71,71,71,71	1
3	CL	A	503	1/1	0.93	0.15	62,62,62,62	0
3	CL	A	504	1/1	0.98	0.09	64,64,64,64	0

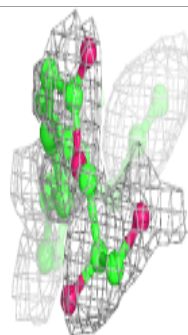
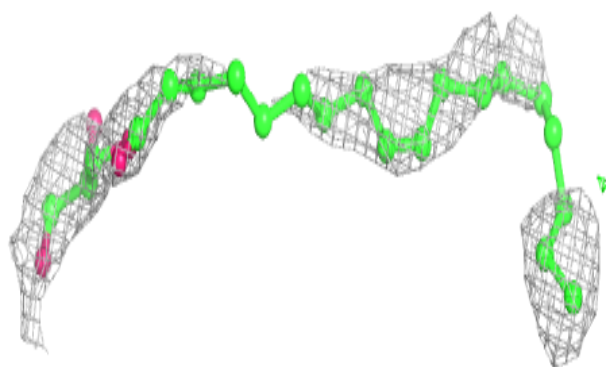
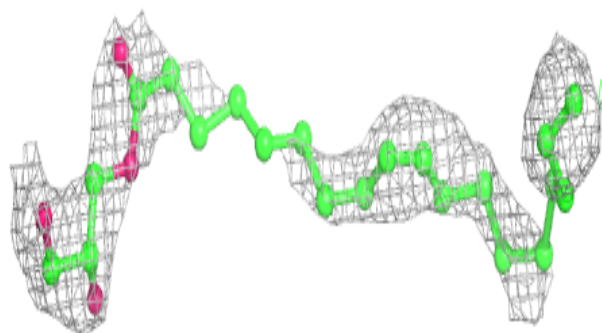
The following is a graphical depiction of the model fit to experimental electron density of all instances of the Ligand of Interest. In addition, ligands with molecular weight > 250 and outliers as shown on the geometry validation Tables will also be included. Each fit is shown from different orientation to approximate a three-dimensional view.



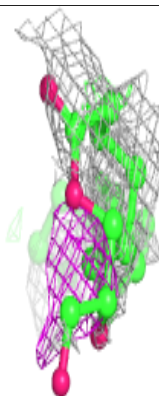
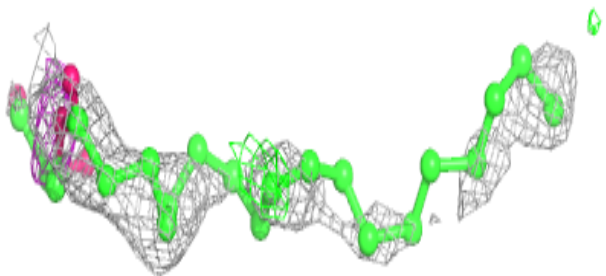
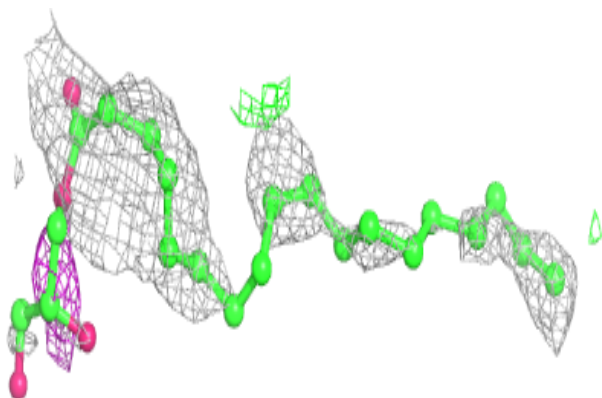


Electron density around OLC A 514:

$2mF_o-DF_c$ (at 0.7 rmsd) in gray
 mF_o-DF_c (at 3 rmsd) in purple (negative)
and green (positive)

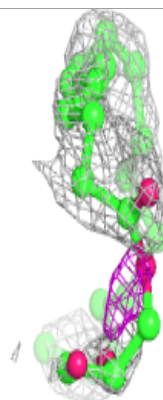
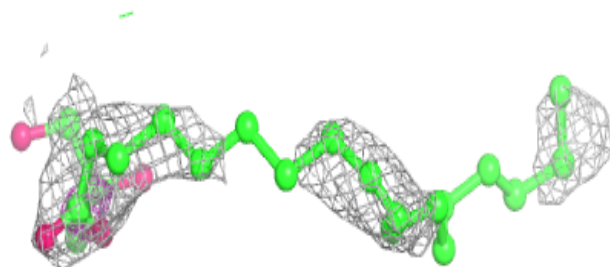
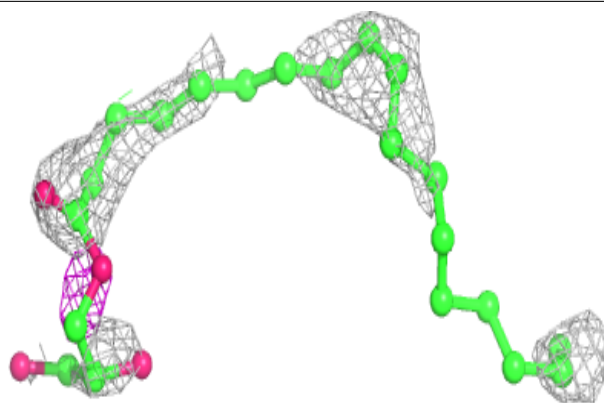
**Electron density around OLC A 515:**

$2mF_o-DF_c$ (at 0.7 rmsd) in gray
 mF_o-DF_c (at 3 rmsd) in purple (negative)
and green (positive)

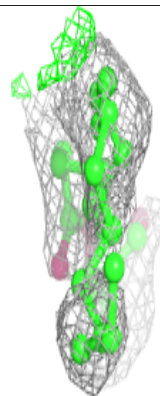
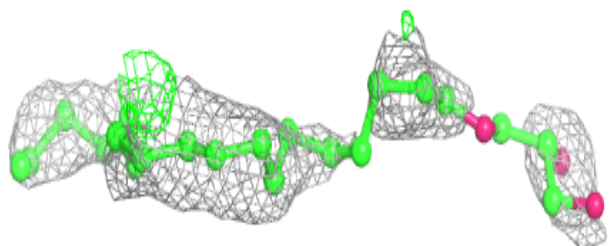
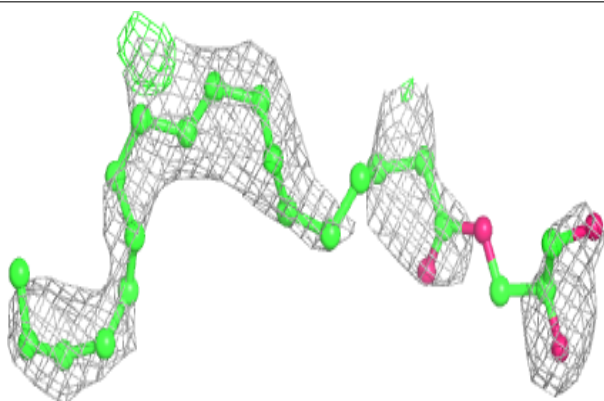


Electron density around OLC A 517:

$2mF_o-DF_c$ (at 0.7 rmsd) in gray
 mF_o-DF_c (at 3 rmsd) in purple (negative)
and green (positive)

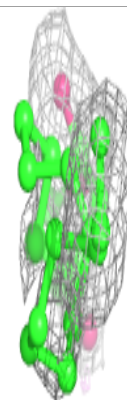
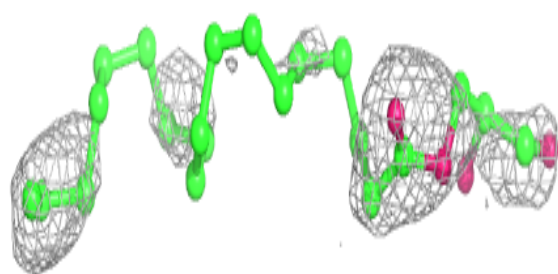
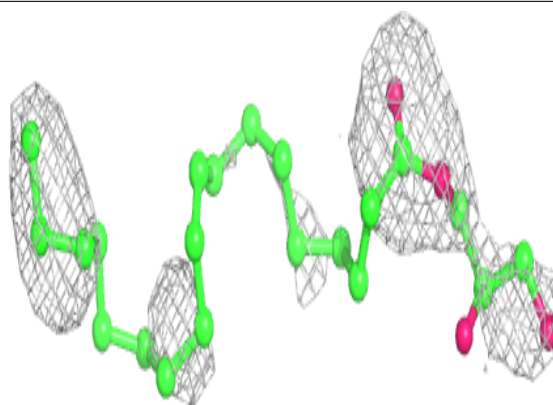
**Electron density around OLC A 512:**

$2mF_o-DF_c$ (at 0.7 rmsd) in gray
 mF_o-DF_c (at 3 rmsd) in purple (negative)
and green (positive)

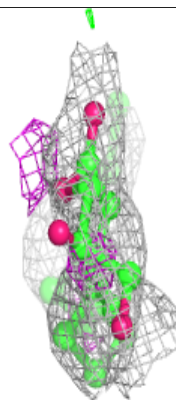
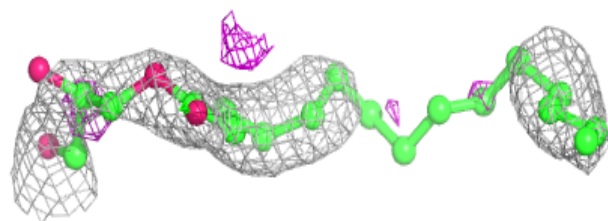
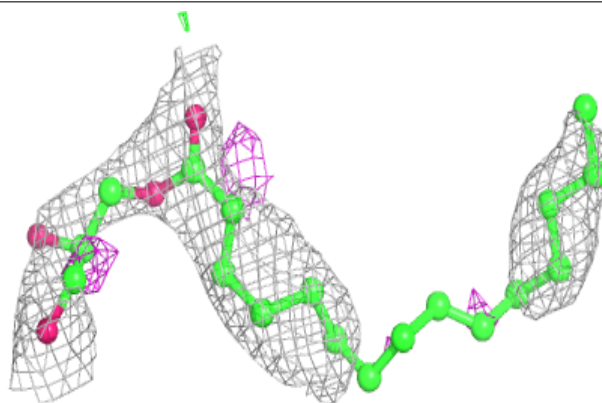


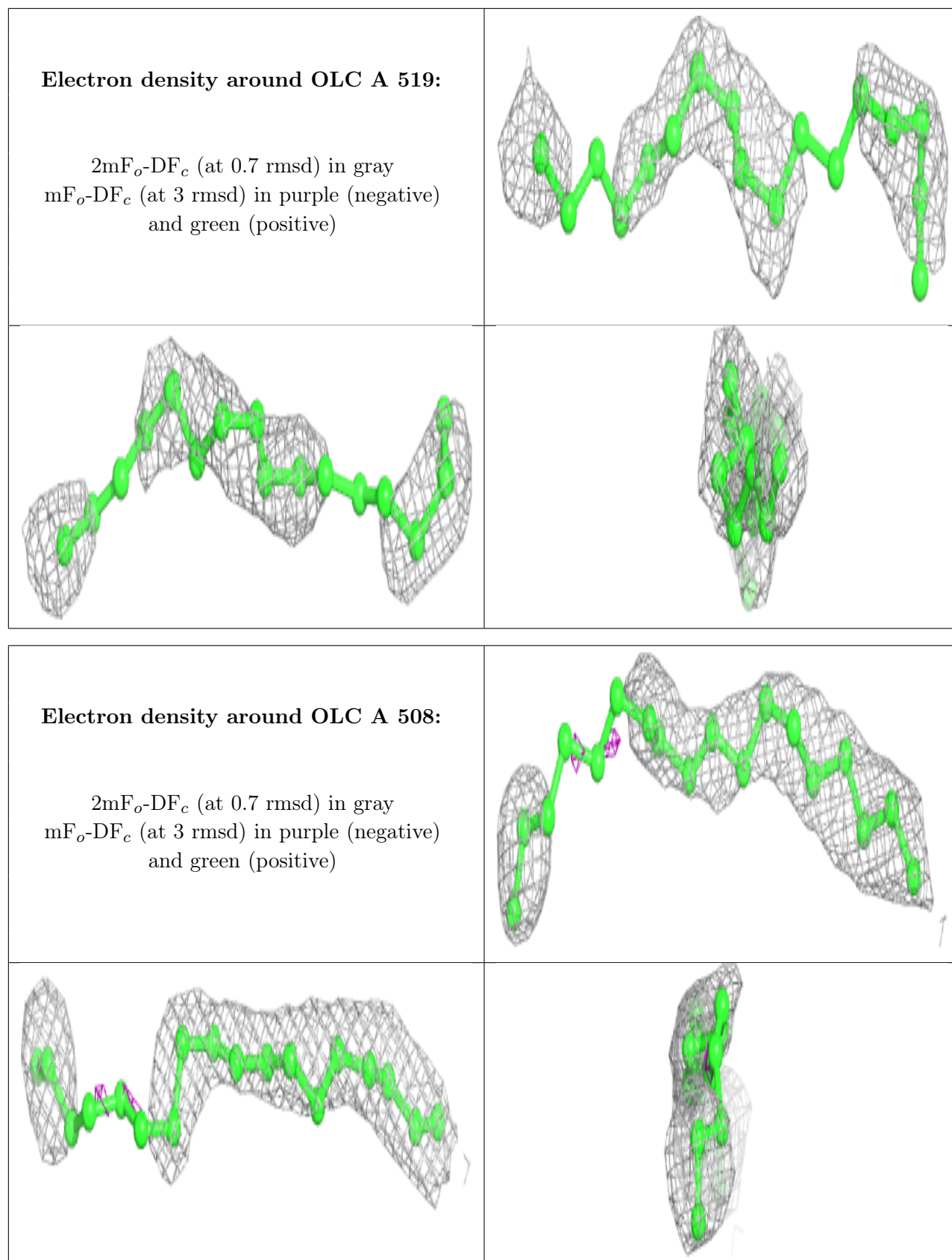
Electron density around OLC A 513:

$2mF_o-DF_c$ (at 0.7 rmsd) in gray
 mF_o-DF_c (at 3 rmsd) in purple (negative)
and green (positive)

**Electron density around OLC A 506:**

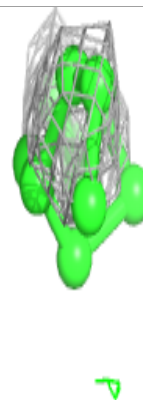
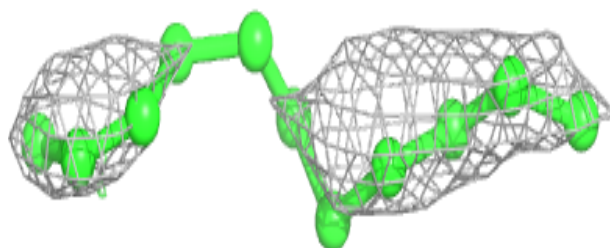
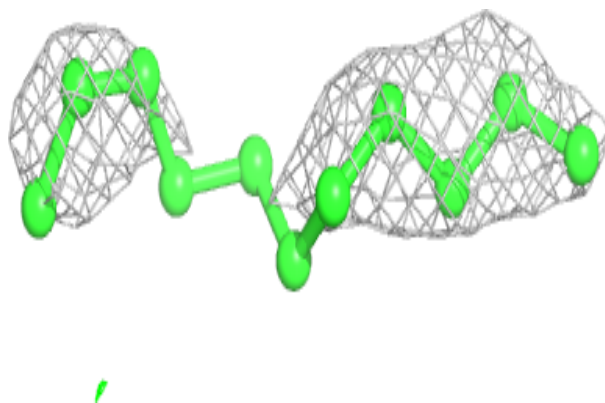
$2mF_o-DF_c$ (at 0.7 rmsd) in gray
 mF_o-DF_c (at 3 rmsd) in purple (negative)
and green (positive)



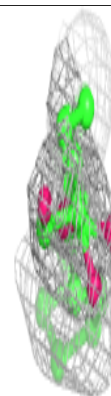
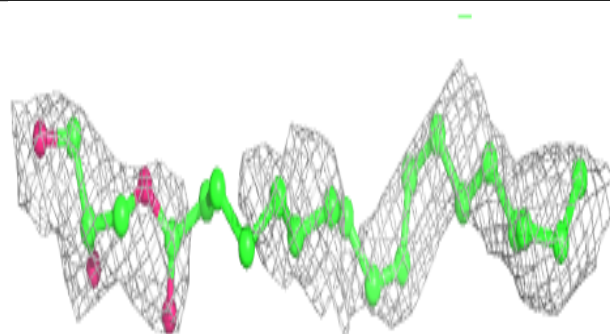
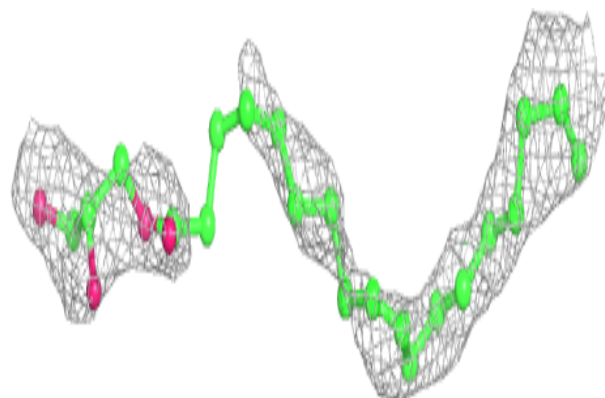


Electron density around OLC A 526:

$2mF_o-DF_c$ (at 0.7 rmsd) in gray
 mF_o-DF_c (at 3 rmsd) in purple (negative)
and green (positive)

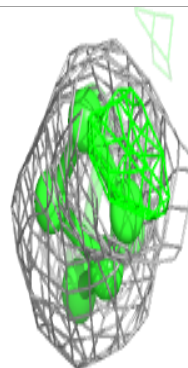
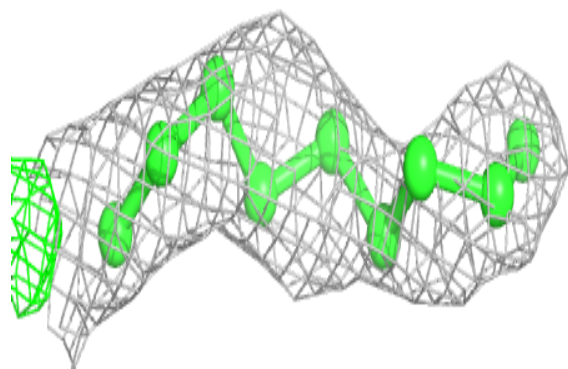
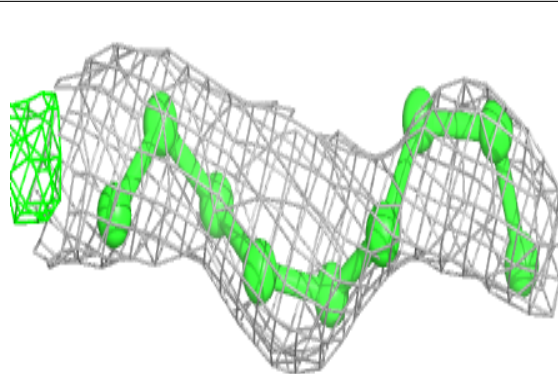
**Electron density around OLC A 510:**

$2mF_o-DF_c$ (at 0.7 rmsd) in gray
 mF_o-DF_c (at 3 rmsd) in purple (negative)
and green (positive)

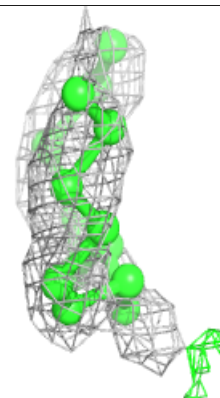
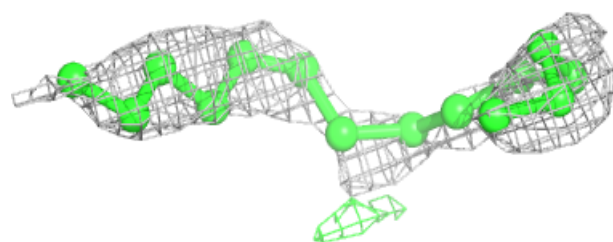
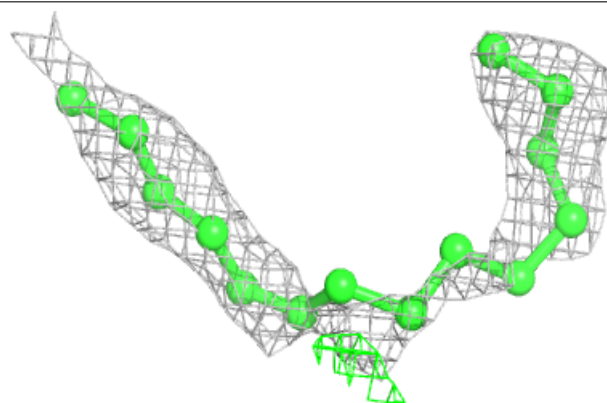


Electron density around OLC A 524:

$2mF_o-DF_c$ (at 0.7 rmsd) in gray
 mF_o-DF_c (at 3 rmsd) in purple (negative)
and green (positive)

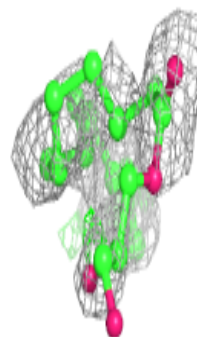
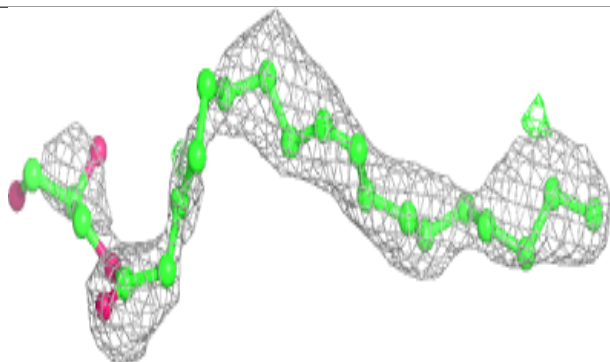
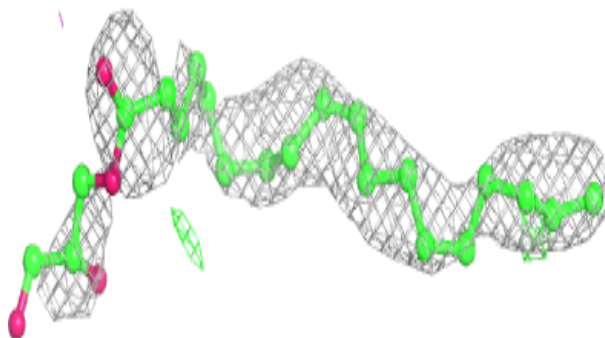
**Electron density around OLC A 518:**

$2mF_o-DF_c$ (at 0.7 rmsd) in gray
 mF_o-DF_c (at 3 rmsd) in purple (negative)
and green (positive)

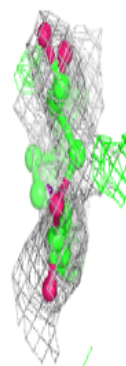
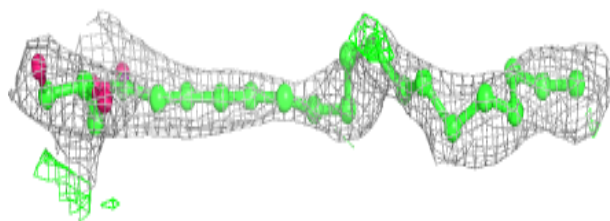
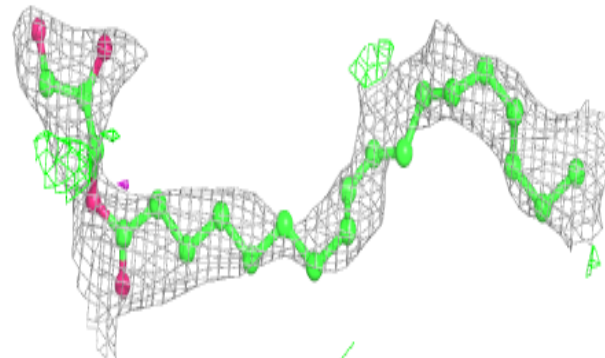


Electron density around OLC A 507:

$2mF_o-DF_c$ (at 0.7 rmsd) in gray
 mF_o-DF_c (at 3 rmsd) in purple (negative)
and green (positive)

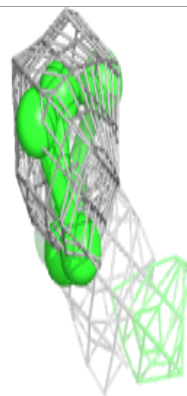
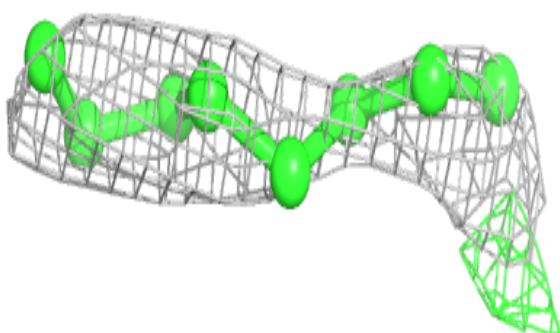
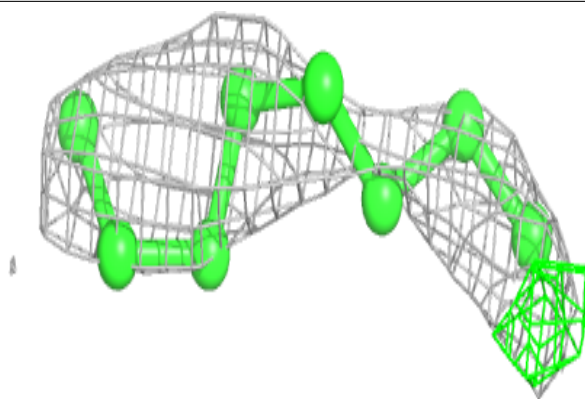
**Electron density around OLC A 522:**

$2mF_o-DF_c$ (at 0.7 rmsd) in gray
 mF_o-DF_c (at 3 rmsd) in purple (negative)
and green (positive)

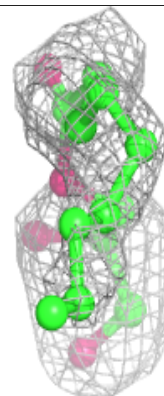
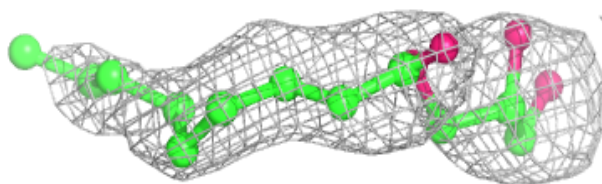
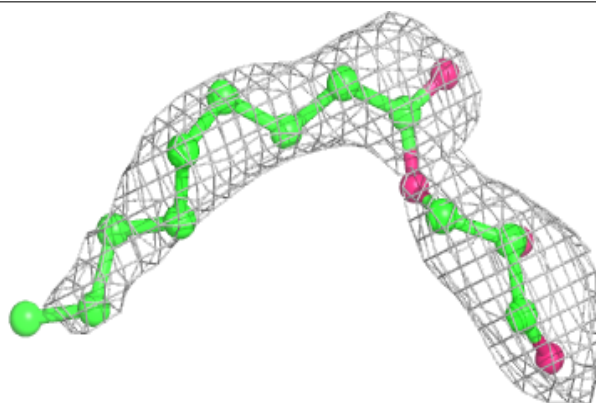


Electron density around OLC A 525:

$2mF_o-DF_c$ (at 0.7 rmsd) in gray
 mF_o-DF_c (at 3 rmsd) in purple (negative)
and green (positive)

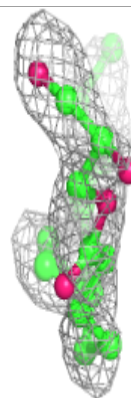
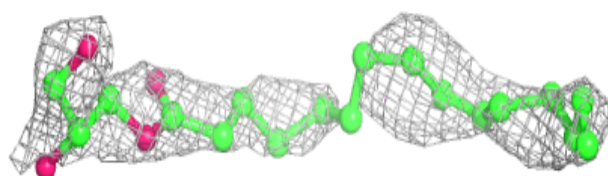
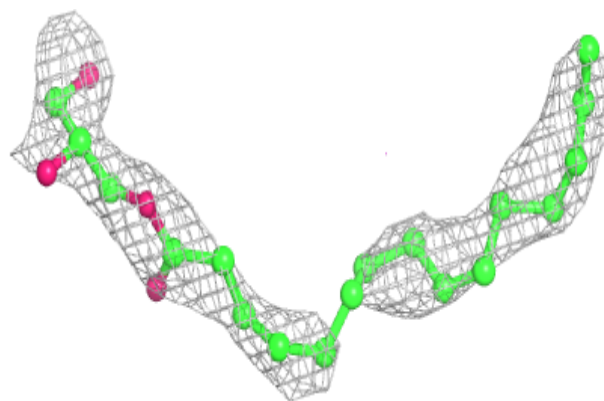
**Electron density around OLC A 516:**

$2mF_o-DF_c$ (at 0.7 rmsd) in gray
 mF_o-DF_c (at 3 rmsd) in purple (negative)
and green (positive)

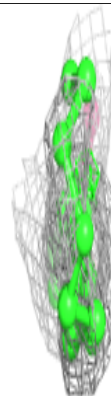
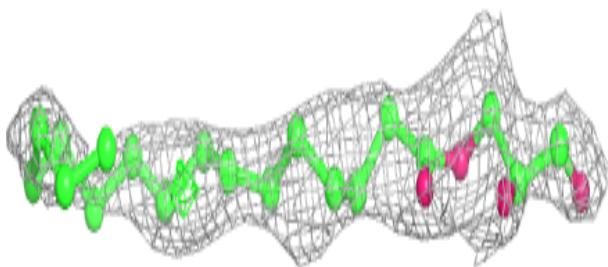
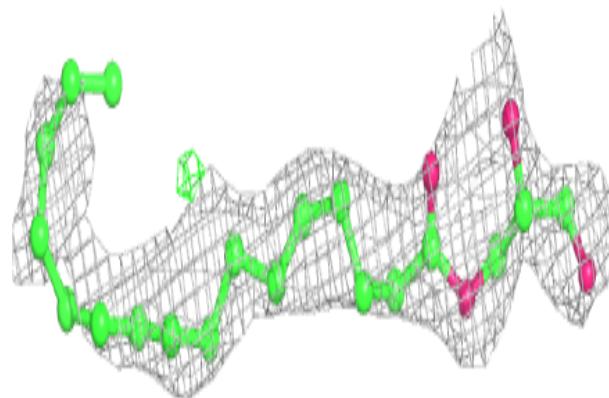


Electron density around OLC A 505:

$2mF_o-DF_c$ (at 0.7 rmsd) in gray
 mF_o-DF_c (at 3 rmsd) in purple (negative)
and green (positive)

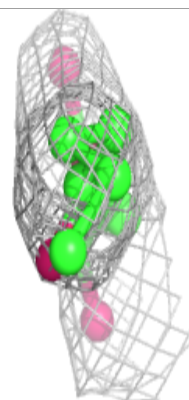
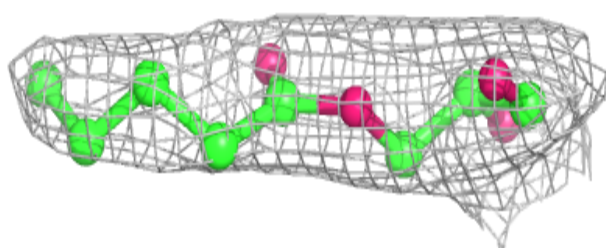
**Electron density around OLC A 521:**

$2mF_o-DF_c$ (at 0.7 rmsd) in gray
 mF_o-DF_c (at 3 rmsd) in purple (negative)
and green (positive)

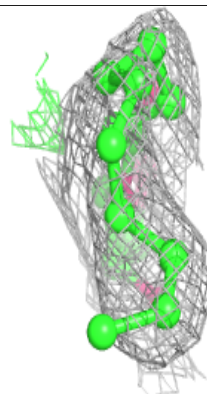
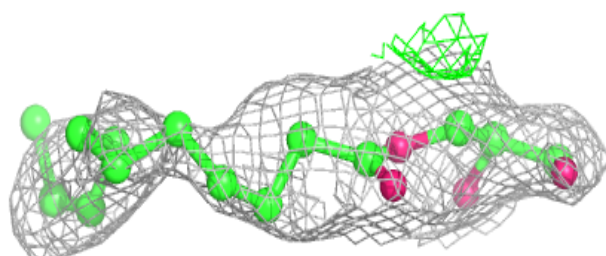
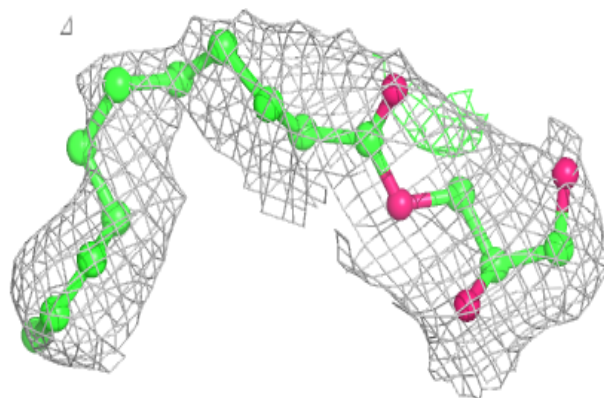


Electron density around OLC A 527:

$2mF_o-DF_c$ (at 0.7 rmsd) in gray
 mF_o-DF_c (at 3 rmsd) in purple (negative)
and green (positive)

**Electron density around OLC A 509:**

$2mF_o-DF_c$ (at 0.7 rmsd) in gray
 mF_o-DF_c (at 3 rmsd) in purple (negative)
and green (positive)



6.5 Other polymers [i](#)

There are no such residues in this entry.