



Full wwPDB X-ray Structure Validation Report ⓘ

Oct 8, 2023 – 09:03 AM EDT

PDB ID : 6E7T
Title : Heterodimer of the GluN1b-GluN2B NMDA receptor amino-terminal domains bound to allosteric inhibitor 93-6
Authors : Regan, M.C.; Furukawa, H.
Deposited on : 2018-07-27
Resolution : 2.31 Å(reported)

This is a Full wwPDB X-ray Structure Validation Report for a publicly released PDB entry.

We welcome your comments at validation@mail.wwpdb.org

A user guide is available at

<https://www.wwpdb.org/validation/2017/XrayValidationReportHelp>

with specific help available everywhere you see the ⓘ symbol.

The types of validation reports are described at

<http://www.wwpdb.org/validation/2017/FAQs#types>.

The following versions of software and data (see [references ⓘ](#)) were used in the production of this report:

MolProbity : 4.02b-467
Mogul : 1.8.5 (274361), CSD as541be (2020)
Xtrriage (Phenix) : 1.13
EDS : 2.35.1
buster-report : 1.1.7 (2018)
Percentile statistics : 20191225.v01 (using entries in the PDB archive December 25th 2019)
Refmac : 5.8.0158
CCP4 : 7.0.044 (Gargrove)
Ideal geometry (proteins) : Engh & Huber (2001)
Ideal geometry (DNA, RNA) : Parkinson et al. (1996)
Validation Pipeline (wwPDB-VP) : 2.35.1

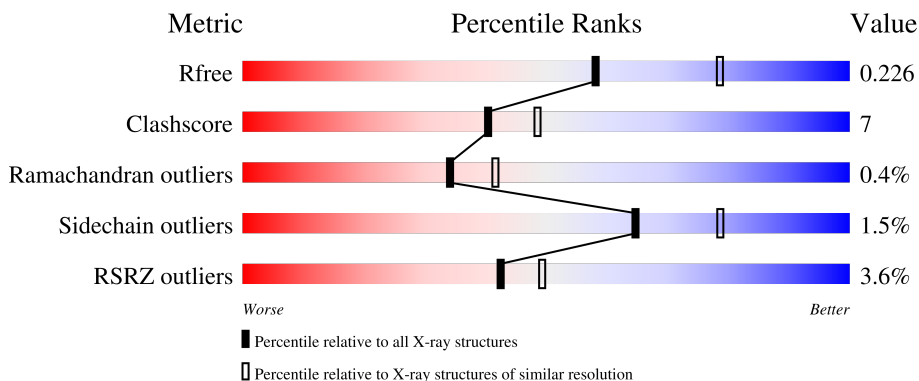
1 Overall quality at a glance

The following experimental techniques were used to determine the structure:

X-RAY DIFFRACTION

The reported resolution of this entry is 2.31 Å.

Percentile scores (ranging between 0-100) for global validation metrics of the entry are shown in the following graphic. The table shows the number of entries on which the scores are based.



Metric	Whole archive (#Entries)	Similar resolution (#Entries, resolution range(Å))
R_{free}	130704	5974 (2.34-2.30)
Clashscore	141614	6604 (2.34-2.30)
Ramachandran outliers	138981	6523 (2.34-2.30)
Sidechain outliers	138945	6523 (2.34-2.30)
RSRZ outliers	127900	5855 (2.34-2.30)

The table below summarises the geometric issues observed across the polymeric chains and their fit to the electron density. The red, orange, yellow and green segments of the lower bar indicate the fraction of residues that contain outliers for ≥ 3 , 2, 1 and 0 types of geometric quality criteria respectively. A grey segment represents the fraction of residues that are not modelled. The numeric value for each fraction is indicated below the corresponding segment, with a dot representing fractions $\leq 5\%$. The upper red bar (where present) indicates the fraction of residues that have poor fit to the electron density. The numeric value is given above the bar.

Mol	Chain	Length	Quality of chain
1	A	385	 2% (red), 81% (green), 11% (yellow), 8% (grey)
1	C	385	 5% (red), 80% (green), 12% (yellow), 8% (grey)
2	B	363	 3% (red), 83% (green), 14% (yellow), .. (grey)
2	D	363	 3% (red), 79% (green), 18% (yellow), .. (grey)
3	E	5	 60% (green), 40% (yellow)

The following table lists non-polymeric compounds, carbohydrate monomers and non-standard residues in protein, DNA, RNA chains that are outliers for geometric or electron-density-fit criteria:

Mol	Type	Chain	Res	Chirality	Geometry	Clashes	Electron density
4	NAG	B	502	-	-	-	X
6	CL	A	509	-	-	X	-
6	CL	A	510	-	-	X	-

2 Entry composition

There are 8 unique types of molecules in this entry. The entry contains 11236 atoms, of which 0 are hydrogens and 0 are deuteriums.

In the tables below, the ZeroOcc column contains the number of atoms modelled with zero occupancy, the AltConf column contains the number of residues with at least one atom in alternate conformation and the Trace column contains the number of residues modelled with at most 2 atoms.

- Molecule 1 is a protein called Glutamate receptor ionotropic, NMDA 1.

Mol	Chain	Residues	Atoms					ZeroOcc	AltConf	Trace
			Total	C	N	O	S			
1	A	355	2677	1708	464	495	10	0	0	0
1	C	355	2681	1711	463	497	10	0	0	0

There are 4 discrepancies between the modelled and reference sequences:

Chain	Residue	Modelled	Actual	Comment	Reference
A	61	GLN	ASN	engineered mutation	UNP A0A1L8F5J9
A	371	GLN	ASN	engineered mutation	UNP A0A1L8F5J9
C	61	GLN	ASN	engineered mutation	UNP A0A1L8F5J9
C	371	GLN	ASN	engineered mutation	UNP A0A1L8F5J9

- Molecule 2 is a protein called Glutamate receptor ionotropic, NMDA 2B.

Mol	Chain	Residues	Atoms					ZeroOcc	AltConf	Trace
			Total	C	N	O	S			
2	B	356	2685	1728	425	517	15	0	0	0
2	D	354	2658	1712	426	505	15	0	0	0

There are 4 discrepancies between the modelled and reference sequences:

Chain	Residue	Modelled	Actual	Comment	Reference
B	348	ASP	ASN	engineered mutation	UNP Q00960
B	394	MET	-	expression tag	UNP Q00960
D	348	ASP	ASN	engineered mutation	UNP Q00960
D	394	MET	-	expression tag	UNP Q00960

- Molecule 3 is an oligosaccharide called alpha-D-mannopyranose-(1-3)-[alpha-D-mannopyranose-(1-6)]beta-D-mannopyranose-(1-4)-2-acetamido-2-deoxy-beta-D-glucopyranose-(1-4)-2-acetamido-2-deoxy-beta-D-glucopyranose.



Mol	Chain	Residues	Atoms				ZeroOcc	AltConf	Trace
			Total	C	N	O			
3	E	5	61	34	2	25	0	0	0

- Molecule 4 is 2-acetamido-2-deoxy-beta-D-glucopyranose (three-letter code: NAG) (formula: $C_8H_{15}NO_6$).



Mol	Chain	Residues	Atoms				ZeroOcc	AltConf
			Total	C	N	O		
4	A	1	14	8	1	5	0	0
4	B	1	14	8	1	5	0	0
4	B	1	14	8	1	5	0	0
4	C	1	14	8	1	5	0	0
4	C	1	14	8	1	5	0	0
4	D	1	14	8	1	5	0	0

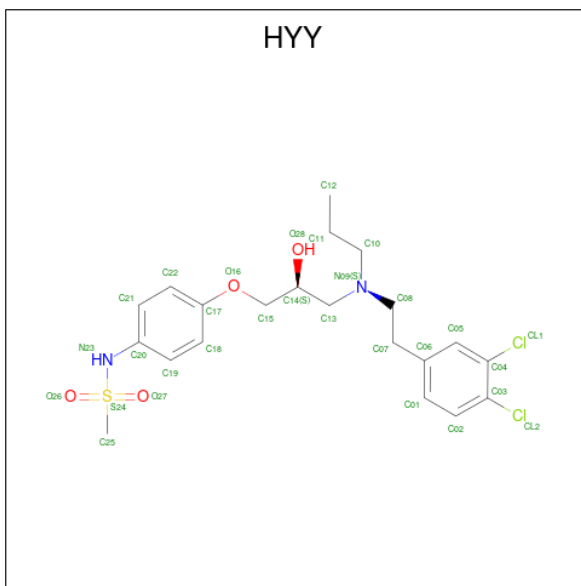
- Molecule 5 is SODIUM ION (three-letter code: NA) (formula: Na).

Mol	Chain	Residues	Atoms	ZeroOcc	AltConf
5	A	1	Total Na 1 1	0	0
5	C	1	Total Na 1 1	0	0

- Molecule 6 is CHLORIDE ION (three-letter code: CL) (formula: Cl).

Mol	Chain	Residues	Atoms	ZeroOcc	AltConf
6	A	3	Total Cl 3 3	0	0
6	B	3	Total Cl 3 3	0	0
6	C	1	Total Cl 1 1	0	0
6	D	4	Total Cl 4 4	0	0

- Molecule 7 is N-{4-[(2S)-3-{[2-(3,4-dichlorophenyl)ethyl](propyl)amino}-2-hydroxypropoxy]phenyl}methanesulfonamide (three-letter code: HYY) (formula: C₂₁H₂₈Cl₂N₂O₄S) (labeled as "Ligand of Interest" by depositor).



Mol	Chain	Residues	Atoms					ZeroOcc	AltConf	
7	B	1	Total	C	Cl	N	O	S	0	0
			30	21	2	2	4	1		
7	D	1	Total	C	Cl	N	O	S	0	0
			30	21	2	2	4	1		

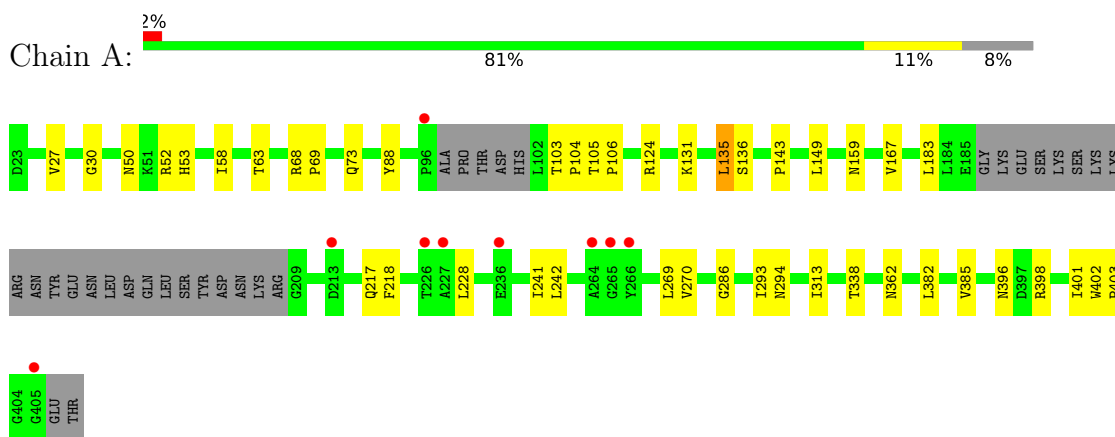
- Molecule 8 is water.

Mol	Chain	Residues	Atoms		ZeroOcc	AltConf
8	A	128	Total 128	O 128	0	0
8	B	74	Total 74	O 74	0	0
8	C	74	Total 74	O 74	0	0
8	D	41	Total 41	O 41	0	0

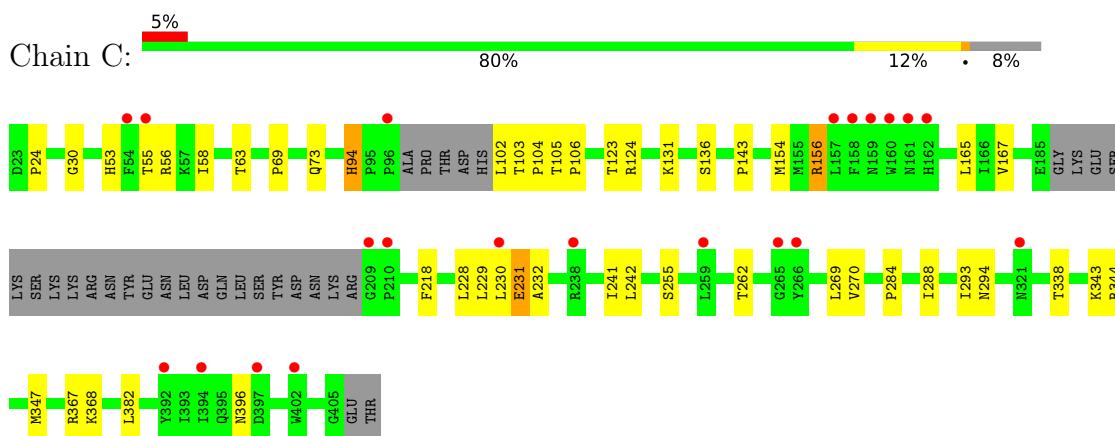
3 Residue-property plots [i](#)

These plots are drawn for all protein, RNA, DNA and oligosaccharide chains in the entry. The first graphic for a chain summarises the proportions of the various outlier classes displayed in the second graphic. The second graphic shows the sequence view annotated by issues in geometry and electron density. Residues are color-coded according to the number of geometric quality criteria for which they contain at least one outlier: green = 0, yellow = 1, orange = 2 and red = 3 or more. A red dot above a residue indicates a poor fit to the electron density ($RSRZ > 2$). Stretches of 2 or more consecutive residues without any outlier are shown as a green connector. Residues present in the sample, but not in the model, are shown in grey.

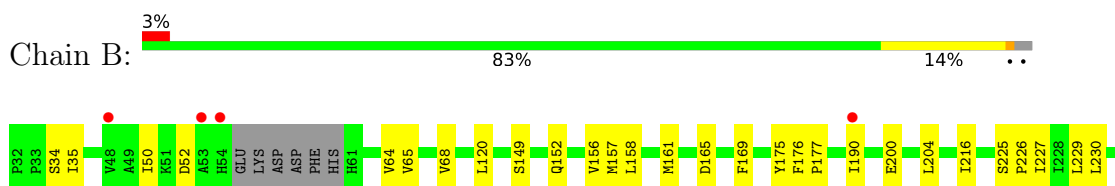
- Molecule 1: Glutamate receptor ionotropic, NMDA 1

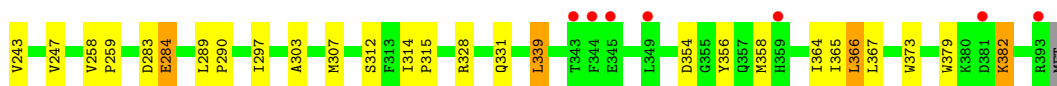


- Molecule 1: Glutamate receptor ionotropic, NMDA 1

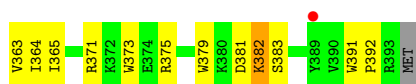
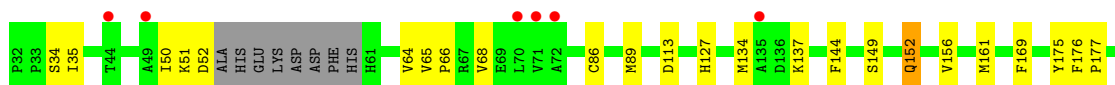
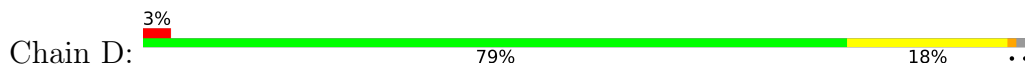


- Molecule 2: Glutamate receptor ionotropic, NMDA 2B

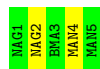




- Molecule 2: Glutamate receptor ionotropic, NMDA 2B



- Molecule 3: alpha-D-mannopyranose-(1-3)-[alpha-D-mannopyranose-(1-6)]beta-D-mannopyranose-(1-4)-2-acetamido-2-deoxy-beta-D-glucopyranose-(1-4)-2-acetamido-2-deoxy-beta-D-glucopyranose



4 Data and refinement statistics

Property	Value	Source
Space group	C 1 2 1	Depositor
Cell constants a, b, c, α , β , γ	268.59Å 59.84Å 146.01Å 90.00° 116.86° 90.00°	Depositor
Resolution (Å)	25.00 – 2.31 49.50 – 2.31	Depositor EDS
% Data completeness (in resolution range)	77.6 (25.00-2.31) 77.8 (49.50-2.31)	Depositor EDS
R_{merge}	0.09	Depositor
R_{sym}	(Not available)	Depositor
$\langle I/\sigma(I) \rangle$ ¹	2.60 (at 2.32Å)	Xtrriage
Refinement program	REFMAC 5.8.0135	Depositor
R, R_{free}	0.194 , 0.225 0.197 , 0.226	Depositor DCC
R_{free} test set	3523 reflections (4.96%)	wwPDB-VP
Wilson B-factor (Å ²)	32.8	Xtrriage
Anisotropy	0.214	Xtrriage
Bulk solvent k_{sol} (e/Å ³), B_{sol} (Å ²)	0.38 , 46.2	EDS
L-test for twinning ²	$\langle L \rangle = 0.49$, $\langle L^2 \rangle = 0.32$	Xtrriage
Estimated twinning fraction	No twinning to report.	Xtrriage
F_o, F_c correlation	0.94	EDS
Total number of atoms	11236	wwPDB-VP
Average B, all atoms (Å ²)	44.0	wwPDB-VP

Xtrriage's analysis on translational NCS is as follows: *The largest off-origin peak in the Patterson function is 3.73% of the height of the origin peak. No significant pseudotranslation is detected.*

¹Intensities estimated from amplitudes.

²Theoretical values of $\langle |L| \rangle$, $\langle L^2 \rangle$ for acentric reflections are 0.5, 0.333 respectively for untwinned datasets, and 0.375, 0.2 for perfectly twinned datasets.

5 Model quality [i](#)

5.1 Standard geometry [i](#)

Bond lengths and bond angles in the following residue types are not validated in this section: NAG, CL, BMA, MAN, NA, HYH

The Z score for a bond length (or angle) is the number of standard deviations the observed value is removed from the expected value. A bond length (or angle) with $|Z| > 5$ is considered an outlier worth inspection. RMSZ is the root-mean-square of all Z scores of the bond lengths (or angles).

Mol	Chain	Bond lengths		Bond angles	
		RMSZ	# Z >5	RMSZ	# Z >5
1	A	0.21	0/2734	0.36	0/3728
1	C	0.20	0/2737	0.35	0/3731
2	B	0.21	0/2746	0.36	0/3756
2	D	0.21	0/2718	0.35	0/3718
All	All	0.21	0/10935	0.35	0/14933

There are no bond length outliers.

There are no bond angle outliers.

There are no chirality outliers.

There are no planarity outliers.

5.2 Too-close contacts [i](#)

In the following table, the Non-H and H(model) columns list the number of non-hydrogen atoms and hydrogen atoms in the chain respectively. The H(added) column lists the number of hydrogen atoms added and optimized by MolProbity. The Clashes column lists the number of clashes within the asymmetric unit, whereas Symm-Clashes lists symmetry-related clashes.

Mol	Chain	Non-H	H(model)	H(added)	Clashes	Symm-Clashes
1	A	2677	0	2591	30	0
1	C	2681	0	2607	34	0
2	B	2685	0	2502	42	0
2	D	2658	0	2479	45	0
3	E	61	0	52	0	0
4	A	14	0	13	0	0
4	B	28	0	26	2	0
4	C	28	0	26	0	0
4	D	14	0	13	1	0

Continued on next page...

Continued from previous page...

Mol	Chain	Non-H	H(model)	H(added)	Clashes	Symm-Clashes
5	A	1	0	0	0	0
5	C	1	0	0	0	0
6	A	3	0	0	5	0
6	B	3	0	0	0	0
6	C	1	0	0	0	0
6	D	4	0	0	0	0
7	B	30	0	0	1	0
7	D	30	0	0	1	0
8	A	128	0	0	3	0
8	B	74	0	0	3	0
8	C	74	0	0	2	0
8	D	41	0	0	1	0
All	All	11236	0	10309	153	0

The all-atom clashscore is defined as the number of clashes found per 1000 atoms (including hydrogen atoms). The all-atom clashscore for this structure is 7.

All (153) close contacts within the same asymmetric unit are listed below, sorted by their clash magnitude.

Atom-1	Atom-2	Interatomic distance (Å)	Clash overlap (Å)
2:B:283:ASP:O	2:B:284:GLU:HB2	1.73	0.87
2:D:169:PHE:HZ	2:D:190:ILE:HD11	1.44	0.81
1:A:53:HIS:O	6:A:510:CL:CL	2.37	0.79
1:A:50:ASN:O	6:A:510:CL:CL	2.38	0.79
1:C:232:ALA:O	8:C:601:HOH:O	2.03	0.75
1:C:367:ARG:HD2	1:C:368:LYS:O	1.87	0.75
2:D:247:VAL:HG12	2:D:247:VAL:O	1.87	0.75
2:B:247:VAL:O	2:B:247:VAL:HG12	1.87	0.75
2:B:165:ASP:OD1	8:B:601:HOH:O	2.06	0.74
2:D:169:PHE:CZ	2:D:190:ILE:HD11	2.23	0.74
2:B:312:SER:O	8:B:602:HOH:O	2.06	0.73
2:B:169:PHE:HZ	2:B:190:ILE:HD11	1.52	0.73
2:B:169:PHE:CZ	2:B:190:ILE:HD11	2.26	0.69
1:A:218:PHE:HB3	1:A:228:LEU:HD13	1.75	0.69
1:A:242:LEU:HB3	1:A:270:VAL:HG12	1.75	0.66
2:D:176:PHE:CD1	2:D:177:PRO:HD2	2.30	0.66
2:B:328:ARG:O	8:B:603:HOH:O	2.15	0.64
2:B:161:MET:HE1	2:B:229:LEU:HD11	1.79	0.64
2:B:314:ILE:HB	2:B:315:PRO:HD2	1.79	0.63
2:D:289:LEU:HB3	2:D:290:PRO:HD3	1.79	0.63
1:C:218:PHE:HB3	1:C:228:LEU:HD13	1.78	0.63

Continued on next page...

Continued from previous page...

Atom-1	Atom-2	Interatomic distance (Å)	Clash overlap (Å)
2:B:68:VAL:HG21	2:B:297:ILE:HD13	1.81	0.63
2:B:157:MET:HE3	2:B:229:LEU:HD22	1.81	0.62
2:B:366:LEU:HD22	2:B:367:LEU:N	2.17	0.60
2:D:175:TYR:HB2	7:D:507:HYY:C25	2.32	0.60
2:D:341:ASN:ND2	4:D:502:NAG:O6	2.35	0.59
2:B:283:ASP:O	2:B:284:GLU:CB	2.46	0.59
2:D:364:ILE:HD12	2:D:364:ILE:N	2.18	0.59
4:B:502:NAG:H61	4:B:502:NAG:H2	1.83	0.58
1:C:293:ILE:O	1:C:294:ASN:HB2	2.02	0.58
1:C:24:PRO:HB3	1:C:56:ARG:O	2.03	0.58
2:D:365:ILE:HD12	2:D:373:TRP:CE3	2.39	0.58
1:C:242:LEU:HB3	1:C:270:VAL:HG12	1.84	0.58
2:D:332:SER:HB3	8:D:639:HOH:O	2.03	0.58
2:D:346:GLY:O	2:D:347:ARG:CB	2.52	0.58
1:A:396:ASN:O	6:A:509:CL:CL	2.59	0.58
2:B:247:VAL:O	2:B:247:VAL:CG1	2.52	0.57
2:D:161:MET:HE1	2:D:229:LEU:HD21	1.86	0.57
2:D:247:VAL:O	2:D:247:VAL:CG1	2.52	0.57
2:B:176:PHE:CD1	2:B:177:PRO:HD2	2.39	0.57
1:A:398:ARG:O	6:A:509:CL:CL	2.60	0.57
1:A:68:ARG:HD2	8:A:724:HOH:O	2.05	0.55
1:A:103:THR:HB	1:A:104:PRO:HD2	1.88	0.55
1:C:103:THR:HB	1:C:104:PRO:HD2	1.88	0.55
2:B:364:ILE:N	2:B:364:ILE:HD12	2.22	0.55
1:A:58:ILE:CD1	1:A:313:ILE:HG22	2.38	0.54
2:B:158:LEU:HA	2:B:161:MET:HE3	1.89	0.54
1:C:94:HIS:CE1	1:C:123:THR:HG23	2.43	0.54
1:A:149:LEU:HD23	1:A:183:LEU:HD11	1.90	0.53
2:B:200:GLU:OE1	2:B:225:SER:OG	2.21	0.53
1:C:103:THR:HB	1:C:104:PRO:CD	2.38	0.53
2:D:307:MET:HG3	2:D:338:TYR:CE2	2.44	0.53
1:A:385:VAL:O	6:A:509:CL:CL	2.64	0.52
2:B:307:MET:HE1	2:B:315:PRO:HD3	1.91	0.52
1:C:105:THR:HB	1:C:106:PRO:HD3	1.90	0.52
1:C:344:ARG:HH11	1:C:344:ARG:HG3	1.74	0.52
2:D:363:VAL:CG1	2:D:375:ARG:HD3	2.39	0.52
2:B:289:LEU:N	2:B:290:PRO:CD	2.72	0.52
2:D:68:VAL:HG21	2:D:297:ILE:HD13	1.92	0.52
2:B:230:LEU:HB3	2:B:258:VAL:HG12	1.91	0.52
1:C:30:GLY:HA2	1:C:63:THR:O	2.10	0.51
1:C:136:SER:HA	1:C:343:LYS:HE3	1.92	0.51

Continued on next page...

Continued from previous page...

Atom-1	Atom-2	Interatomic distance (Å)	Clash overlap (Å)
1:C:124:ARG:O	1:C:143:PRO:HA	2.11	0.51
1:A:30:GLY:HA2	1:A:63:THR:O	2.11	0.51
1:C:228:LEU:O	1:C:231:GLU:HB2	2.11	0.50
2:D:379:TRP:CZ2	2:D:382:LYS:HA	2.47	0.50
2:B:307:MET:CE	2:B:315:PRO:HD3	2.42	0.50
2:D:86:CYS:HA	2:D:89:MET:HE2	1.94	0.50
1:C:262:THR:HB	1:C:284:PRO:HB3	1.92	0.49
1:A:103:THR:HB	1:A:104:PRO:CD	2.42	0.49
2:B:303:ALA:CB	2:B:339:LEU:HD13	2.41	0.49
1:C:344:ARG:HG3	1:C:344:ARG:NH1	2.27	0.49
2:B:35:ILE:HG23	2:B:64:VAL:HG21	1.94	0.49
2:B:307:MET:HE2	2:B:314:ILE:HA	1.94	0.48
1:C:154:MET:CE	1:C:288:ILE:HG21	2.43	0.48
2:B:35:ILE:HG23	2:B:64:VAL:CG2	2.44	0.48
1:A:105:THR:N	1:A:106:PRO:CD	2.77	0.47
1:C:338:THR:HG22	1:C:338:THR:O	2.14	0.47
2:D:34:SER:HA	2:D:65:VAL:O	2.15	0.47
2:D:302:THR:HG22	2:D:306:ASP:OD2	2.14	0.47
1:C:156:ARG:HH11	1:C:156:ARG:CG	2.27	0.47
1:A:286:GLY:HA2	1:A:401:ILE:O	2.14	0.47
1:A:293:ILE:O	1:A:294:ASN:HB2	2.13	0.47
1:C:102:LEU:HA	8:C:636:HOH:O	2.14	0.47
1:A:69:PRO:HD2	1:A:73:GLN:OE1	2.15	0.47
2:D:230:LEU:HB3	2:D:258:VAL:HG12	1.96	0.47
2:B:365:ILE:HD12	2:B:373:TRP:CE3	2.50	0.47
1:C:241:ILE:HA	1:C:269:LEU:O	2.15	0.47
2:D:50:ILE:C	2:D:52:ASP:H	2.18	0.47
2:D:144:PHE:CE2	2:D:340:ILE:HG22	2.50	0.47
2:D:65:VAL:HG13	2:D:66:PRO:HD2	1.96	0.46
2:B:50:ILE:C	2:B:52:ASP:H	2.19	0.46
2:B:157:MET:HE2	2:B:229:LEU:HD13	1.97	0.46
2:D:89:MET:CE	2:D:321:CYS:SG	3.03	0.46
2:D:289:LEU:N	2:D:290:PRO:CD	2.78	0.46
1:A:338:THR:O	1:A:338:THR:HG22	2.15	0.46
2:B:289:LEU:HB3	2:B:290:PRO:HD3	1.97	0.46
2:B:379:TRP:CZ2	2:B:382:LYS:HA	2.50	0.46
1:A:27:VAL:HG13	1:A:88:TYR:CD1	2.51	0.46
2:D:283:ASP:CG	2:D:283:ASP:O	2.53	0.46
2:D:314:ILE:HB	2:D:315:PRO:HD2	1.97	0.46
1:A:136:SER:HB3	8:A:672:HOH:O	2.15	0.45
1:C:156:ARG:HH11	1:C:156:ARG:CB	2.29	0.45

Continued on next page...

Continued from previous page...

Atom-1	Atom-2	Interatomic distance (Å)	Clash overlap (Å)
2:D:149:SER:HB3	2:D:356:TYR:CD2	2.52	0.45
1:C:69:PRO:HD2	1:C:73:GLN:OE1	2.17	0.45
2:B:289:LEU:N	2:B:290:PRO:HD2	2.32	0.45
4:B:502:NAG:H61	4:B:502:NAG:C2	2.47	0.45
2:B:366:LEU:HD22	2:B:366:LEU:C	2.37	0.44
2:D:270:PRO:HG2	2:D:273:PHE:CE1	2.52	0.44
1:A:105:THR:HB	1:A:106:PRO:HD3	1.98	0.44
1:A:68:ARG:HA	1:A:68:ARG:HD3	1.84	0.44
2:D:127:HIS:NE2	2:D:284:GLU:HG3	2.32	0.44
2:D:363:VAL:HG13	2:D:375:ARG:HD3	1.99	0.44
2:D:391:TRP:HA	2:D:392:PRO:HD3	1.83	0.44
1:A:382:LEU:HD23	1:A:382:LEU:HA	1.90	0.44
2:B:149:SER:HB3	2:B:356:TYR:CE1	2.53	0.44
1:C:229:LEU:HD12	1:C:255:SER:HB2	2.00	0.44
2:B:175:TYR:CE1	2:B:204:LEU:HD21	2.53	0.44
2:D:35:ILE:O	2:D:35:ILE:HG13	2.18	0.44
1:A:167:VAL:O	1:A:217:GLN:HA	2.17	0.43
2:B:34:SER:HA	2:B:65:VAL:O	2.19	0.43
2:D:152:GLN:O	2:D:156:VAL:HG23	2.18	0.43
1:C:396:ASN:OD1	1:C:396:ASN:C	2.57	0.43
1:A:135:LEU:HD13	7:B:506:HYY:C17	2.47	0.43
2:B:152:GLN:O	2:B:156:VAL:HG23	2.18	0.43
1:C:105:THR:N	1:C:106:PRO:CD	2.82	0.43
2:D:35:ILE:HG23	2:D:64:VAL:CG2	2.48	0.43
1:C:58:ILE:O	1:C:58:ILE:HG13	2.19	0.43
2:D:220:LEU:HD12	2:D:243:VAL:HG12	2.01	0.43
2:D:113:ASP:OD1	2:D:137:LYS:HG2	2.19	0.43
2:B:216:ILE:HG22	2:B:243:VAL:HG11	2.01	0.42
2:B:120:LEU:HD13	2:B:331:GLN:HB3	2.01	0.42
1:C:343:LYS:O	1:C:347:MET:HG2	2.19	0.42
2:B:226:PRO:C	2:B:227:ILE:HD12	2.40	0.42
2:D:149:SER:HB3	2:D:356:TYR:CE2	2.55	0.41
1:A:124:ARG:O	1:A:143:PRO:HA	2.19	0.41
2:B:149:SER:HB3	2:B:356:TYR:CD1	2.56	0.41
1:C:230:LEU:HD23	1:C:230:LEU:HA	1.86	0.41
1:C:154:MET:HE1	1:C:288:ILE:HG21	2.03	0.41
2:D:364:ILE:HD12	2:D:364:ILE:H	1.83	0.41
1:A:159:ASN:OD1	8:A:601:HOH:O	2.22	0.41
1:C:382:LEU:HD23	1:C:382:LEU:HA	1.90	0.41
1:A:402:TRP:HB3	1:A:403:PRO:HD2	2.03	0.41
2:B:230:LEU:O	2:B:259:PRO:HD3	2.21	0.41

Continued on next page...

Continued from previous page...

Atom-1	Atom-2	Interatomic distance (Å)	Clash overlap (Å)
1:C:53:HIS:O	1:C:55:THR:HG23	2.21	0.41
2:D:371:ARG:HG2	2:D:371:ARG:HH11	1.85	0.41
2:D:381:ASP:C	2:D:383:SER:N	2.74	0.41
1:A:362:ASN:OD1	1:A:362:ASN:C	2.60	0.40
1:A:241:ILE:HA	1:A:269:LEU:O	2.21	0.40
1:C:165:LEU:HG	1:C:167:VAL:HG13	2.04	0.40
2:D:226:PRO:C	2:D:227:ILE:HD12	2.42	0.40
2:D:329:ILE:HG12	2:D:329:ILE:O	2.21	0.40
2:D:161:MET:HE1	2:D:229:LEU:HD11	2.04	0.40

There are no symmetry-related clashes.

5.3 Torsion angles [i](#)

5.3.1 Protein backbone [i](#)

In the following table, the Percentiles column shows the percent Ramachandran outliers of the chain as a percentile score with respect to all X-ray entries followed by that with respect to entries of similar resolution.

The Analysed column shows the number of residues for which the backbone conformation was analysed, and the total number of residues.

Mol	Chain	Analysed	Favoured	Allowed	Outliers	Percentiles	
1	A	349/385 (91%)	336 (96%)	13 (4%)	0	100	100
1	C	349/385 (91%)	339 (97%)	10 (3%)	0	100	100
2	B	352/363 (97%)	338 (96%)	12 (3%)	2 (1%)	25	30
2	D	350/363 (96%)	331 (95%)	16 (5%)	3 (1%)	17	19
All	All	1400/1496 (94%)	1344 (96%)	51 (4%)	5 (0%)	34	41

All (5) Ramachandran outliers are listed below:

Mol	Chain	Res	Type
2	B	284	GLU
2	D	382	LYS
2	D	347	ARG
2	B	382	LYS
2	D	51	LYS

5.3.2 Protein sidechains [i](#)

In the following table, the Percentiles column shows the percent sidechain outliers of the chain as a percentile score with respect to all X-ray entries followed by that with respect to entries of similar resolution.

The Analysed column shows the number of residues for which the sidechain conformation was analysed, and the total number of residues.

Mol	Chain	Analysed	Rotameric	Outliers	Percentiles
1	A	275/331 (83%)	272 (99%)	3 (1%)	73 85
1	C	277/331 (84%)	273 (99%)	4 (1%)	67 80
2	B	277/326 (85%)	273 (99%)	4 (1%)	67 80
2	D	271/326 (83%)	266 (98%)	5 (2%)	59 74
All	All	1100/1314 (84%)	1084 (98%)	16 (2%)	65 79

All (16) residues with a non-rotameric sidechain are listed below:

Mol	Chain	Res	Type
1	A	52	ARG
1	A	131	LYS
1	A	135	LEU
2	B	339	LEU
2	B	354	ASP
2	B	358	MET
2	B	366	LEU
1	C	94	HIS
1	C	131	LYS
1	C	156	ARG
1	C	231	GLU
2	D	134	MET
2	D	152	GLN
2	D	284	GLU
2	D	309	SER
2	D	358	MET

Sometimes sidechains can be flipped to improve hydrogen bonding and reduce clashes. All (2) such sidechains are listed below:

Mol	Chain	Res	Type
2	B	192	ASN
2	D	219	GLN

5.3.3 RNA [i](#)

There are no RNA molecules in this entry.

5.4 Non-standard residues in protein, DNA, RNA chains [i](#)

There are no non-standard protein/DNA/RNA residues in this entry.

5.5 Carbohydrates [i](#)

5 monosaccharides are modelled in this entry.

In the following table, the Counts columns list the number of bonds (or angles) for which Mogul statistics could be retrieved, the number of bonds (or angles) that are observed in the model and the number of bonds (or angles) that are defined in the Chemical Component Dictionary. The Link column lists molecule types, if any, to which the group is linked. The Z score for a bond length (or angle) is the number of standard deviations the observed value is removed from the expected value. A bond length (or angle) with $|Z| > 2$ is considered an outlier worth inspection. RMSZ is the root-mean-square of all Z scores of the bond lengths (or angles).

Mol	Type	Chain	Res	Link	Bond lengths			Bond angles		
					Counts	RMSZ	# Z > 2	Counts	RMSZ	# Z > 2
3	NAG	E	1	3,1	14,14,15	0.30	0	17,19,21	0.67	0
3	NAG	E	2	3	14,14,15	0.29	0	17,19,21	0.83	1 (5%)
3	BMA	E	3	3	11,11,12	0.26	0	15,15,17	0.61	0
3	MAN	E	4	3	11,11,12	0.27	0	15,15,17	0.86	1 (6%)
3	MAN	E	5	3	11,11,12	0.25	0	15,15,17	0.84	0

In the following table, the Chirals column lists the number of chiral outliers, the number of chiral centers analysed, the number of these observed in the model and the number defined in the Chemical Component Dictionary. Similar counts are reported in the Torsion and Rings columns. '-' means no outliers of that kind were identified.

Mol	Type	Chain	Res	Link	Chirals	Torsions	Rings
3	NAG	E	1	3,1	-	0/6/23/26	0/1/1/1
3	NAG	E	2	3	-	2/6/23/26	0/1/1/1
3	BMA	E	3	3	-	1/2/19/22	0/1/1/1
3	MAN	E	4	3	-	0/2/19/22	0/1/1/1
3	MAN	E	5	3	-	0/2/19/22	0/1/1/1

There are no bond length outliers.

All (2) bond angle outliers are listed below:

Mol	Chain	Res	Type	Atoms	Z	Observed(°)	Ideal(°)
3	E	4	MAN	C1-C2-C3	2.33	112.53	109.67
3	E	2	NAG	O5-C1-C2	-2.23	107.77	111.29

There are no chirality outliers.

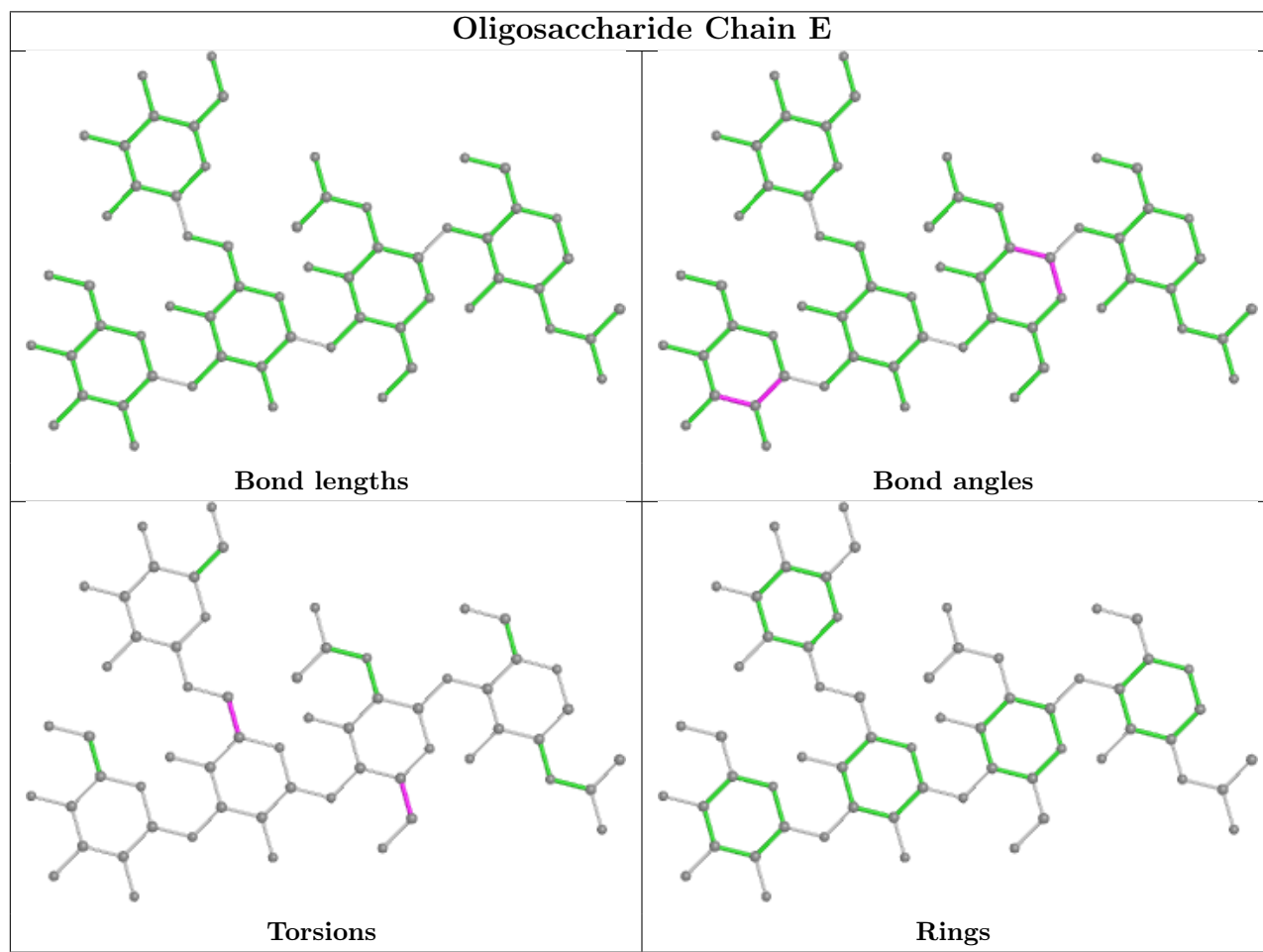
All (3) torsion outliers are listed below:

Mol	Chain	Res	Type	Atoms
3	E	2	NAG	C4-C5-C6-O6
3	E	2	NAG	O5-C5-C6-O6
3	E	3	BMA	O5-C5-C6-O6

There are no ring outliers.

No monomer is involved in short contacts.

The following is a two-dimensional graphical depiction of Mogul quality analysis of bond lengths, bond angles, torsion angles, and ring geometry for oligosaccharide.



5.6 Ligand geometry

Of 21 ligands modelled in this entry, 13 are monoatomic - leaving 8 for Mogul analysis.

In the following table, the Counts columns list the number of bonds (or angles) for which Mogul statistics could be retrieved, the number of bonds (or angles) that are observed in the model and the number of bonds (or angles) that are defined in the Chemical Component Dictionary. The Link column lists molecule types, if any, to which the group is linked. The Z score for a bond length (or angle) is the number of standard deviations the observed value is removed from the expected value. A bond length (or angle) with $|Z| > 2$ is considered an outlier worth inspection. RMSZ is the root-mean-square of all Z scores of the bond lengths (or angles).

Mol	Type	Chain	Res	Link	Bond lengths			Bond angles		
					Counts	RMSZ	# Z > 2	Counts	RMSZ	# Z > 2
4	NAG	D	502	2	14,14,15	0.27	0	17,19,21	0.92	1 (5%)
4	NAG	A	501	1	14,14,15	0.31	0	17,19,21	0.62	0
4	NAG	B	502	2	14,14,15	0.27	0	17,19,21	0.80	1 (5%)
7	HYY	B	506	-	31,31,31	1.79	11 (35%)	42,42,42	2.10	3 (7%)
7	HYY	D	507	-	31,31,31	1.80	11 (35%)	42,42,42	2.09	3 (7%)
4	NAG	C	501	1	14,14,15	0.33	0	17,19,21	0.61	0
4	NAG	C	502	1	14,14,15	0.28	0	17,19,21	0.67	0
4	NAG	B	501	2	14,14,15	0.29	0	17,19,21	0.64	0

In the following table, the Chirals column lists the number of chiral outliers, the number of chiral centers analysed, the number of these observed in the model and the number defined in the Chemical Component Dictionary. Similar counts are reported in the Torsion and Rings columns. '-' means no outliers of that kind were identified.

Mol	Type	Chain	Res	Link	Chirals	Torsions	Rings
4	NAG	D	502	2	-	2/6/23/26	0/1/1/1
4	NAG	A	501	1	-	0/6/23/26	0/1/1/1
4	NAG	B	502	2	-	2/6/23/26	0/1/1/1
7	HYY	B	506	-	-	3/22/22/22	0/2/2/2
7	HYY	D	507	-	-	4/22/22/22	0/2/2/2
4	NAG	C	501	1	-	0/6/23/26	0/1/1/1
4	NAG	C	502	1	-	3/6/23/26	0/1/1/1
4	NAG	B	501	2	-	0/6/23/26	0/1/1/1

All (22) bond length outliers are listed below:

Mol	Chain	Res	Type	Atoms	Z	Observed(Å)	Ideal(Å)
7	B	506	HYY	S24-N23	3.93	1.68	1.63
7	D	507	HYY	S24-N23	3.92	1.68	1.63

Continued on next page...

Continued from previous page...

Mol	Chain	Res	Type	Atoms	Z	Observed(Å)	Ideal(Å)
7	D	507	HYY	C19-C18	3.34	1.44	1.38
7	B	506	HYY	C19-C18	3.33	1.44	1.38
7	D	507	HYY	O16-C17	2.94	1.44	1.37
7	B	506	HYY	O16-C17	2.88	1.44	1.37
7	B	506	HYY	C19-C20	-2.87	1.34	1.39
7	D	507	HYY	C19-C20	-2.80	1.34	1.39
7	D	507	HYY	C10-N09	-2.61	1.41	1.47
7	B	506	HYY	C10-N09	-2.60	1.41	1.47
7	D	507	HYY	C04-CL1	2.51	1.79	1.73
7	B	506	HYY	C20-N23	2.47	1.47	1.43
7	B	506	HYY	C04-CL1	2.45	1.79	1.73
7	D	507	HYY	C20-N23	2.40	1.47	1.43
7	B	506	HYY	C25-S24	2.38	1.81	1.75
7	D	507	HYY	C25-S24	2.35	1.81	1.75
7	B	506	HYY	C22-C21	2.30	1.42	1.38
7	D	507	HYY	C22-C21	2.27	1.42	1.38
7	B	506	HYY	C11-C10	2.17	1.62	1.51
7	D	507	HYY	C11-C10	2.16	1.61	1.51
7	D	507	HYY	C03-CL2	2.15	1.78	1.73
7	B	506	HYY	C03-CL2	2.09	1.78	1.73

All (8) bond angle outliers are listed below:

Mol	Chain	Res	Type	Atoms	Z	Observed(°)	Ideal(°)
7	B	506	HYY	O27-S24-O26	-11.90	101.73	118.85
7	D	507	HYY	O27-S24-O26	-11.85	101.81	118.85
7	D	507	HYY	C25-S24-N23	2.99	110.04	106.63
7	B	506	HYY	C25-S24-N23	2.97	110.02	106.63
4	D	502	NAG	C1-O5-C5	2.68	115.82	112.19
7	D	507	HYY	O26-S24-N23	2.14	111.45	107.10
7	B	506	HYY	O27-S24-N23	2.08	111.33	107.10
4	B	502	NAG	C1-O5-C5	2.06	114.98	112.19

There are no chirality outliers.

All (14) torsion outliers are listed below:

Mol	Chain	Res	Type	Atoms
4	B	502	NAG	C8-C7-N2-C2
4	B	502	NAG	O7-C7-N2-C2
4	C	502	NAG	C8-C7-N2-C2
4	C	502	NAG	O7-C7-N2-C2
4	D	502	NAG	C8-C7-N2-C2

Continued on next page...

Continued from previous page...

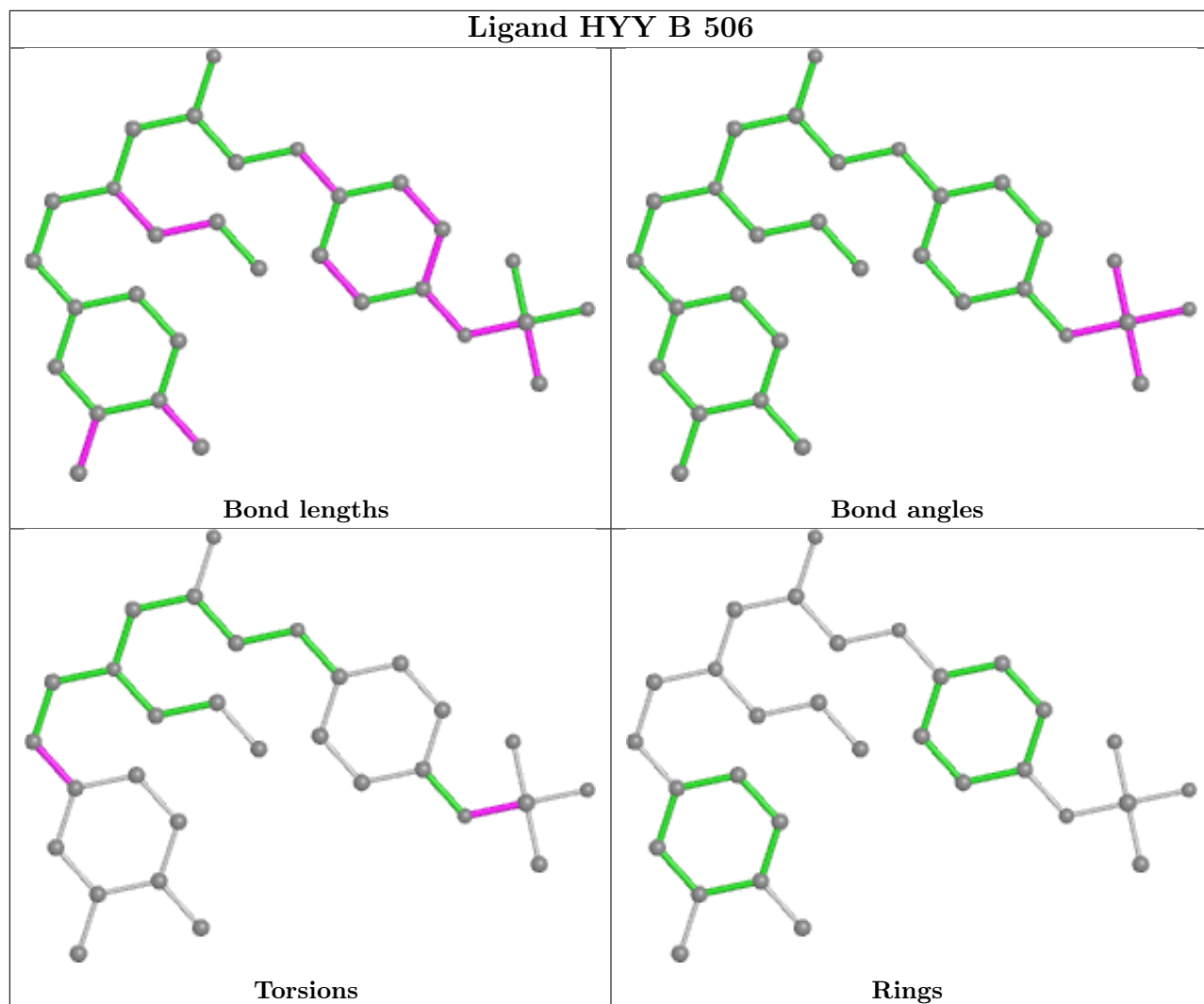
Mol	Chain	Res	Type	Atoms
4	D	502	NAG	O7-C7-N2-C2
7	D	507	HYY	N09-C13-C14-O28
7	D	507	HYY	N09-C13-C14-C15
7	D	507	HYY	C01-C06-C07-C08
7	D	507	HYY	C05-C06-C07-C08
4	C	502	NAG	C4-C5-C6-O6
7	B	506	HYY	C01-C06-C07-C08
7	B	506	HYY	C05-C06-C07-C08
7	B	506	HYY	C20-N23-S24-O27

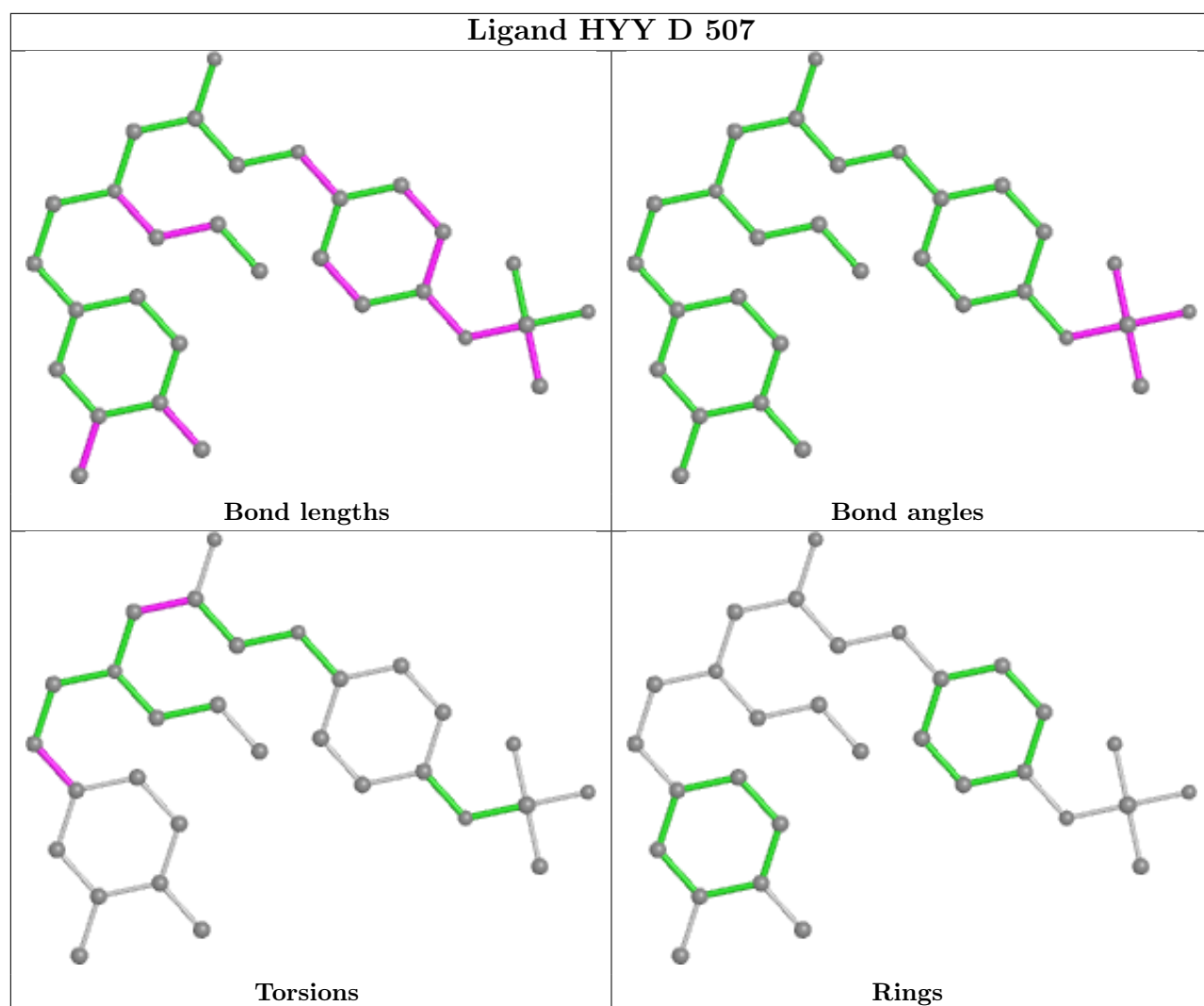
There are no ring outliers.

4 monomers are involved in 5 short contacts:

Mol	Chain	Res	Type	Clashes	Symm-Clashes
4	D	502	NAG	1	0
4	B	502	NAG	2	0
7	B	506	HYY	1	0
7	D	507	HYY	1	0

The following is a two-dimensional graphical depiction of Mogul quality analysis of bond lengths, bond angles, torsion angles, and ring geometry for all instances of the Ligand of Interest. In addition, ligands with molecular weight > 250 and outliers as shown on the validation Tables will also be included. For torsion angles, if less than 5% of the Mogul distribution of torsion angles is within 10 degrees of the torsion angle in question, then that torsion angle is considered an outlier. Any bond that is central to one or more torsion angles identified as an outlier by Mogul will be highlighted in the graph. For rings, the root-mean-square deviation (RMSD) between the ring in question and similar rings identified by Mogul is calculated over all ring torsion angles. If the average RMSD is greater than 60 degrees and the minimal RMSD between the ring in question and any Mogul-identified rings is also greater than 60 degrees, then that ring is considered an outlier. The outliers are highlighted in purple. The color gray indicates Mogul did not find sufficient equivalents in the CSD to analyse the geometry.





5.7 Other polymers [i](#)

There are no such residues in this entry.

5.8 Polymer linkage issues [i](#)

There are no chain breaks in this entry.

6 Fit of model and data

6.1 Protein, DNA and RNA chains

In the following table, the column labelled ‘#RSRZ > 2’ contains the number (and percentage) of RSRZ outliers, followed by percent RSRZ outliers for the chain as percentile scores relative to all X-ray entries and entries of similar resolution. The OWAB column contains the minimum, median, 95th percentile and maximum values of the occupancy-weighted average B-factor per residue. The column labelled ‘Q < 0.9’ lists the number of (and percentage) of residues with an average occupancy less than 0.9.

Mol	Chain	Analysed	<RSRZ>	#RSRZ>2	OWAB(Å ²)	Q<0.9
1	A	355/385 (92%)	0.10	9 (2%) 57 64	17, 32, 59, 89	0
1	C	355/385 (92%)	0.25	21 (5%) 22 29	26, 47, 79, 115	0
2	B	356/363 (98%)	0.14	11 (3%) 49 56	17, 42, 74, 103	0
2	D	354/363 (97%)	0.12	10 (2%) 53 60	25, 44, 86, 111	0
All	All	1420/1496 (94%)	0.15	51 (3%) 42 49	17, 42, 77, 115	0

All (51) RSRZ outliers are listed below:

Mol	Chain	Res	Type	RSRZ
1	C	266	TYR	5.8
1	C	158	PHE	4.9
1	C	160	TRP	4.1
1	A	226	THR	3.8
1	C	265	GLY	3.5
1	C	392	TYR	3.4
2	D	389	TYR	3.3
2	B	344	PHE	3.3
2	B	54	HIS	3.2
2	D	72	ALA	3.1
2	B	393	ARG	3.0
1	C	54	PHE	3.0
1	C	162	HIS	2.9
2	B	345	GLU	2.9
1	C	96	PRO	2.9
2	B	48	VAL	2.9
2	D	44	THR	2.9
1	C	230	LEU	2.8
1	C	157	LEU	2.7
1	C	210	PRO	2.7
1	C	259	LEU	2.7

Continued on next page...

Continued from previous page...

Mol	Chain	Res	Type	RSRZ
1	C	238	ARG	2.7
2	B	343	THR	2.7
2	B	349	LEU	2.7
1	C	159	ASN	2.7
1	C	161	ASN	2.7
2	D	71	VAL	2.6
1	C	402	TRP	2.6
2	D	135	ALA	2.5
2	D	344	PHE	2.5
1	C	397	ASP	2.5
2	D	324	THR	2.4
1	A	236	GLU	2.4
1	C	209	GLY	2.3
1	A	96	PRO	2.3
1	A	264	ALA	2.3
1	C	55	THR	2.3
2	B	53	ALA	2.2
2	B	359	HIS	2.2
1	A	265	GLY	2.2
1	A	266	TYR	2.2
2	B	190	ILE	2.2
1	C	394	ILE	2.2
2	D	70	LEU	2.2
2	B	381	ASP	2.2
1	A	227	ALA	2.1
1	A	213	ASP	2.1
1	A	405	GLY	2.1
2	D	347	ARG	2.1
2	D	49	ALA	2.1
1	C	321	ASN	2.1

6.2 Non-standard residues in protein, DNA, RNA chains [i](#)

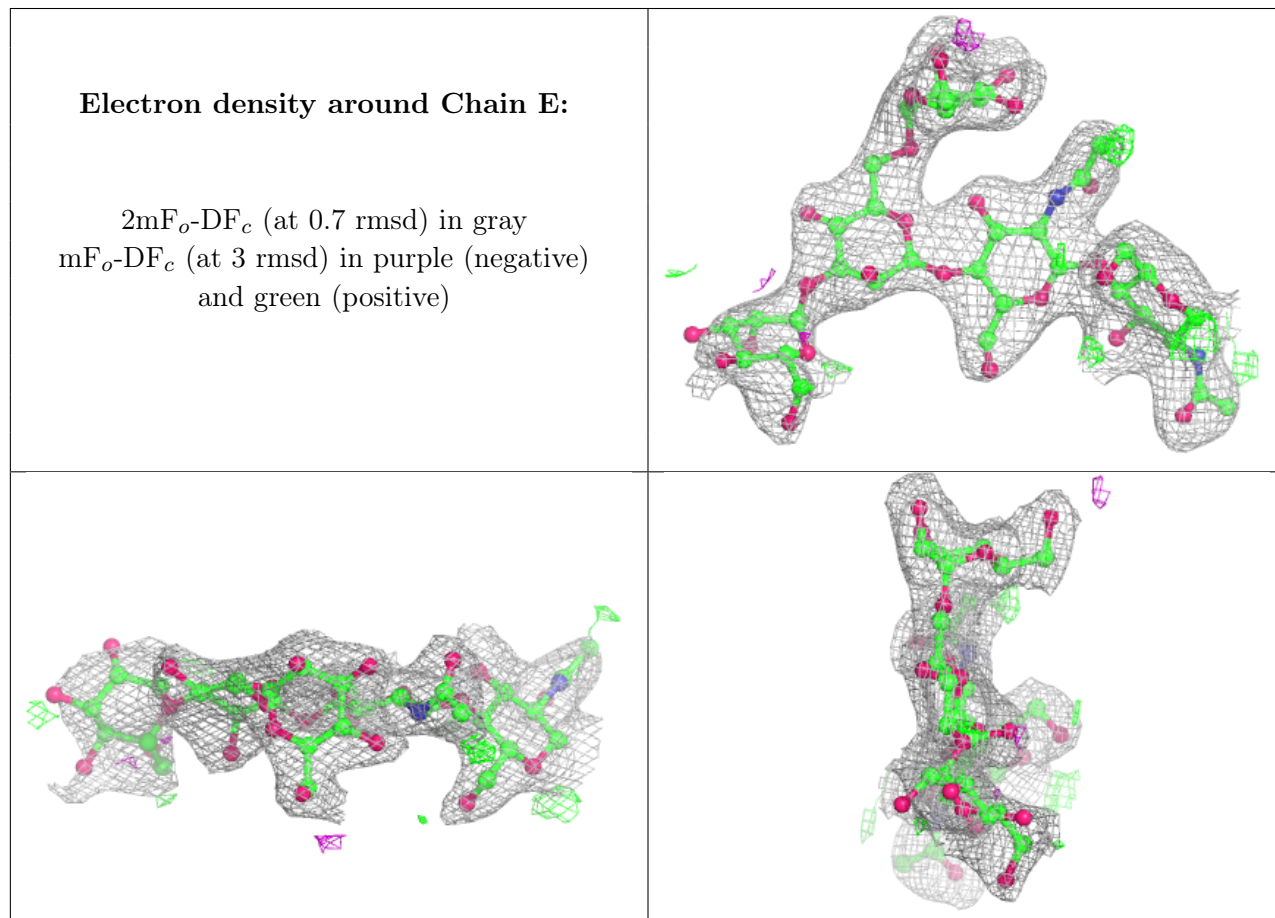
There are no non-standard protein/DNA/RNA residues in this entry.

6.3 Carbohydrates [i](#)

In the following table, the Atoms column lists the number of modelled atoms in the group and the number defined in the chemical component dictionary. The B-factors column lists the minimum, median, 95th percentile and maximum values of B factors of atoms in the group. The column labelled 'Q< 0.9' lists the number of atoms with occupancy less than 0.9.

Mol	Type	Chain	Res	Atoms	RSCC	RSR	B-factors(\AA^2)	Q<0.9
3	MAN	E	4	11/12	0.68	0.28	114,117,125,125	0
3	NAG	E	1	14/15	0.90	0.12	48,54,60,62	0
3	NAG	E	2	14/15	0.91	0.11	57,68,76,87	0
3	MAN	E	5	11/12	0.92	0.11	52,56,61,62	0
3	BMA	E	3	11/12	0.93	0.15	65,78,87,107	0

The following is a graphical depiction of the model fit to experimental electron density for oligosaccharide. Each fit is shown from different orientation to approximate a three-dimensional view.



6.4 Ligands i

In the following table, the Atoms column lists the number of modelled atoms in the group and the number defined in the chemical component dictionary. The B-factors column lists the minimum, median, 95th percentile and maximum values of B factors of atoms in the group. The column labelled 'Q< 0.9' lists the number of atoms with occupancy less than 0.9.

Mol	Type	Chain	Res	Atoms	RSCC	RSR	B-factors(\AA^2)	Q<0.9
4	NAG	B	502	14/15	0.52	0.56	114,124,135,140	0
4	NAG	D	502	14/15	0.56	0.37	111,122,126,127	0

Continued on next page...

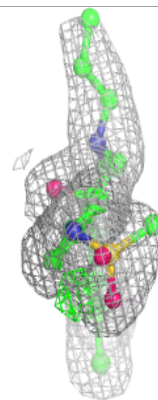
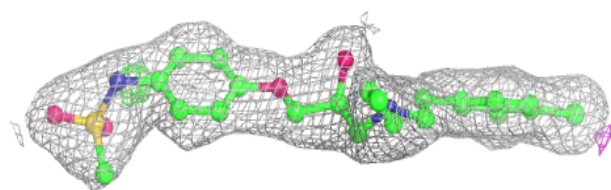
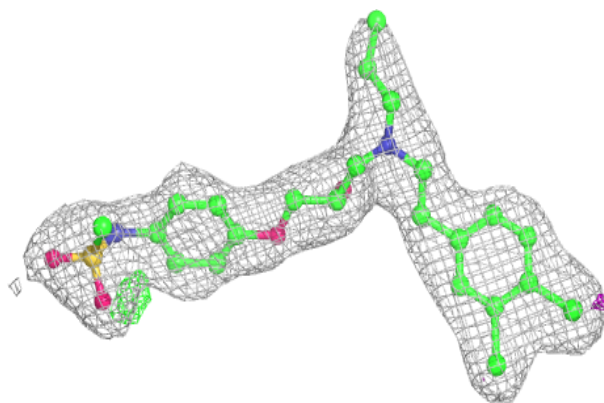
Continued from previous page...

Mol	Type	Chain	Res	Atoms	RSCC	RSR	B-factors(\AA^2)	Q<0.9
4	NAG	B	501	14/15	0.65	0.19	99,112,118,121	0
4	NAG	C	501	14/15	0.73	0.31	109,122,128,132	0
6	CL	D	506	1/1	0.79	0.12	80,80,80,80	0
6	CL	D	503	1/1	0.86	0.20	75,75,75,75	0
6	CL	D	505	1/1	0.89	0.12	69,69,69,69	0
4	NAG	C	502	14/15	0.89	0.14	53,59,63,65	0
6	CL	B	505	1/1	0.91	0.14	59,59,59,59	0
6	CL	B	504	1/1	0.91	0.12	71,71,71,71	0
4	NAG	A	501	14/15	0.93	0.13	40,49,66,71	0
6	CL	D	504	1/1	0.94	0.16	55,55,55,55	0
6	CL	A	509	1/1	0.95	0.07	39,39,39,39	0
6	CL	A	510	1/1	0.95	0.07	53,53,53,53	0
6	CL	B	503	1/1	0.95	0.09	47,47,47,47	0
6	CL	A	508	1/1	0.96	0.06	54,54,54,54	0
7	HYY	D	507	30/30	0.96	0.16	24,29,48,57	0
7	HYY	B	506	30/30	0.97	0.19	21,27,40,54	0
6	CL	C	504	1/1	0.98	0.23	52,52,52,52	0
5	NA	C	503	1/1	0.99	0.12	31,31,31,31	0
5	NA	A	507	1/1	0.99	0.16	27,27,27,27	0

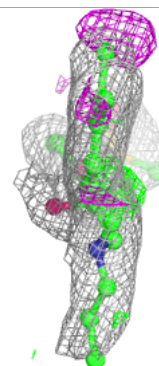
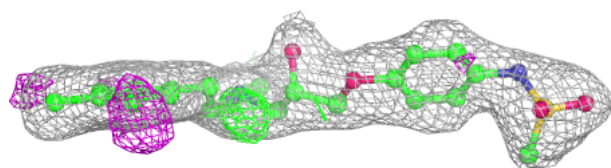
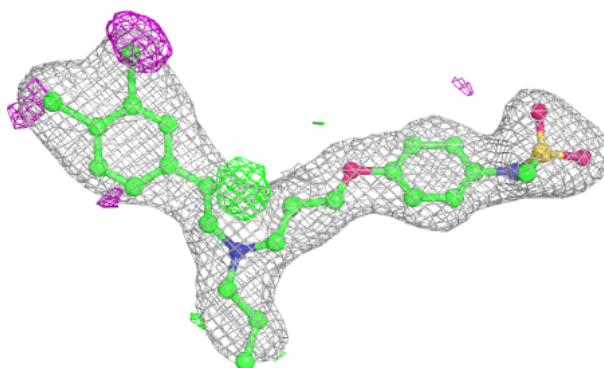
The following is a graphical depiction of the model fit to experimental electron density of all instances of the Ligand of Interest. In addition, ligands with molecular weight > 250 and outliers as shown on the geometry validation Tables will also be included. Each fit is shown from different orientation to approximate a three-dimensional view.

Electron density around HYD 507:

$2mF_o-DF_c$ (at 0.7 rmsd) in gray
 mF_o-DF_c (at 3 rmsd) in purple (negative)
and green (positive)

**Electron density around HYD 506:**

$2mF_o-DF_c$ (at 0.7 rmsd) in gray
 mF_o-DF_c (at 3 rmsd) in purple (negative)
and green (positive)



6.5 Other polymers [i](#)

There are no such residues in this entry.