



Full wwPDB EM Validation Report ⓘ

Nov 7, 2022 – 07:59 AM EST

PDB ID : 6E7Z
EMDB ID : EMD-9002
Title : cryo-EM structure of human TRPML1 with ML-SA1 and PI35P2
Authors : Schmiege, P.; Li, X.
Deposited on : 2018-07-27
Resolution : 3.73 Å (reported)

This is a Full wwPDB EM Validation Report for a publicly released PDB entry.

We welcome your comments at validation@mail.wwpdb.org

A user guide is available at

<https://www.wwpdb.org/validation/2017/EMValidationReportHelp>

with specific help available everywhere you see the ⓘ symbol.

The types of validation reports are described at

<http://www.wwpdb.org/validation/2017/FAQs#types>.

The following versions of software and data (see [references ⓘ](#)) were used in the production of this report:

EMDB validation analysis : 0.0.1.dev43
Mogul : 1.8.5 (274361), CSD as541be (2020)
MolProbity : 4.02b-467
buster-report : 1.1.7 (2018)
Percentile statistics : 20191225.v01 (using entries in the PDB archive December 25th 2019)
MapQ : 1.9.9
Ideal geometry (proteins) : Engh & Huber (2001)
Ideal geometry (DNA, RNA) : Parkinson et al. (1996)
Validation Pipeline (wwPDB-VP) : 2.31.2

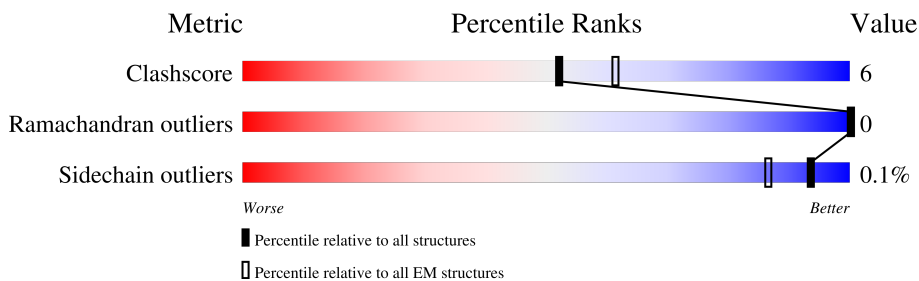
1 Overall quality at a glance

The following experimental techniques were used to determine the structure:

ELECTRON MICROSCOPY

The reported resolution of this entry is 3.73 Å.

Percentile scores (ranging between 0-100) for global validation metrics of the entry are shown in the following graphic. The table shows the number of entries on which the scores are based.



Metric	Whole archive (#Entries)	EM structures (#Entries)
Clashscore	158937	4297
Ramachandran outliers	154571	4023
Sidechain outliers	154315	3826

The table below summarises the geometric issues observed across the polymeric chains and their fit to the map. The red, orange, yellow and green segments of the bar indicate the fraction of residues that contain outliers for ≥ 3 , 2, 1 and 0 types of geometric quality criteria respectively. A grey segment represents the fraction of residues that are not modelled. The numeric value for each fraction is indicated below the corresponding segment, with a dot representing fractions $\leq 5\%$. The upper red bar (where present) indicates the fraction of residues that have poor fit to the EM map (all-atom inclusion $< 40\%$). The numeric value is given above the bar.

Mol	Chain	Length	Quality of chain
1	A	580	
1	B	580	
1	C	580	
1	D	580	

2 Entry composition [i](#)

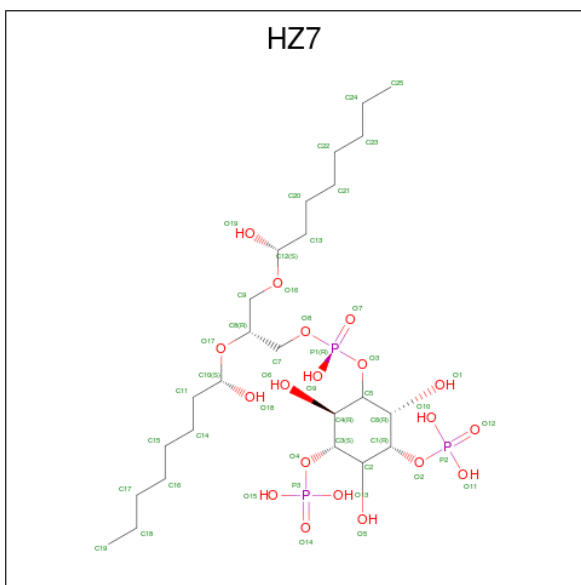
There are 3 unique types of molecules in this entry. The entry contains 15616 atoms, of which 0 are hydrogens and 0 are deuteriums.

In the tables below, the AltConf column contains the number of residues with at least one atom in alternate conformation and the Trace column contains the number of residues modelled with at most 2 atoms.

- Molecule 1 is a protein called Mucolipin-1.

Mol	Chain	Residues	Atoms					AltConf	Trace
			Total	C	N	O	S		
1	A	475	Total 3830	2501	640	664	25	0	0
1	B	475	Total 3830	2501	640	664	25	0	0
1	C	475	Total 3830	2501	640	664	25	0	0
1	D	475	Total 3830	2501	640	664	25	0	0

- Molecule 2 is (1R,2S,3S,4R,5S,6R)-5-[[[(R)-[(2R)-2,3-bis[[[(1S)-1-hydroxyoctyl]oxy]oxy]propoxy] (hydroxy)phosphoryl]oxy]-2,4,6-trihydroxycyclohexane-1,3-diyl bis[dihydrogen (phosphate)]] (three-letter code: HZ7) (formula: C₂₅H₅₃O₁₉P₃).



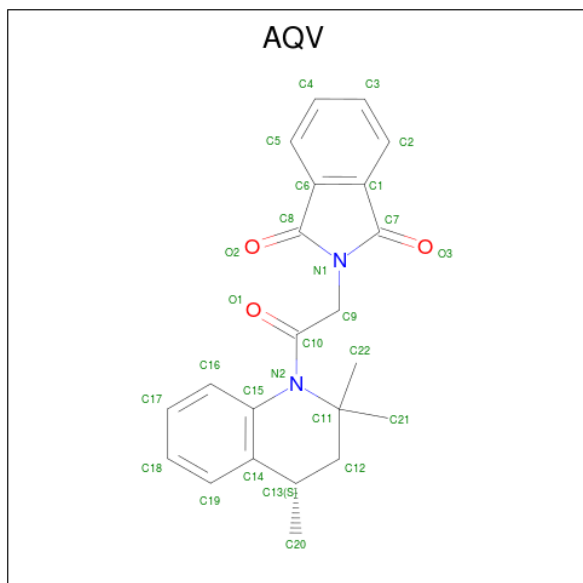
Mol	Chain	Residues	Atoms			AltConf	
			Total	C	O		P
2	A	1	Total 47	25	19	3	0
2	B	1	Total 47	25	19	3	0

Continued on next page...

Continued from previous page...

Mol	Chain	Residues	Atoms				AltConf
2	C	1	Total	C	O	P	0
			47	25	19	3	
2	D	1	Total	C	O	P	0
			47	25	19	3	

- Molecule 3 is 2-{2-oxo-2-[(4S)-2,2,4-trimethyl-3,4-dihydroquinolin-1(2H)-yl]ethyl}-1H-isindole-1,3(2H)-dione (three-letter code: AQV) (formula: C₂₂H₂₂N₂O₃).

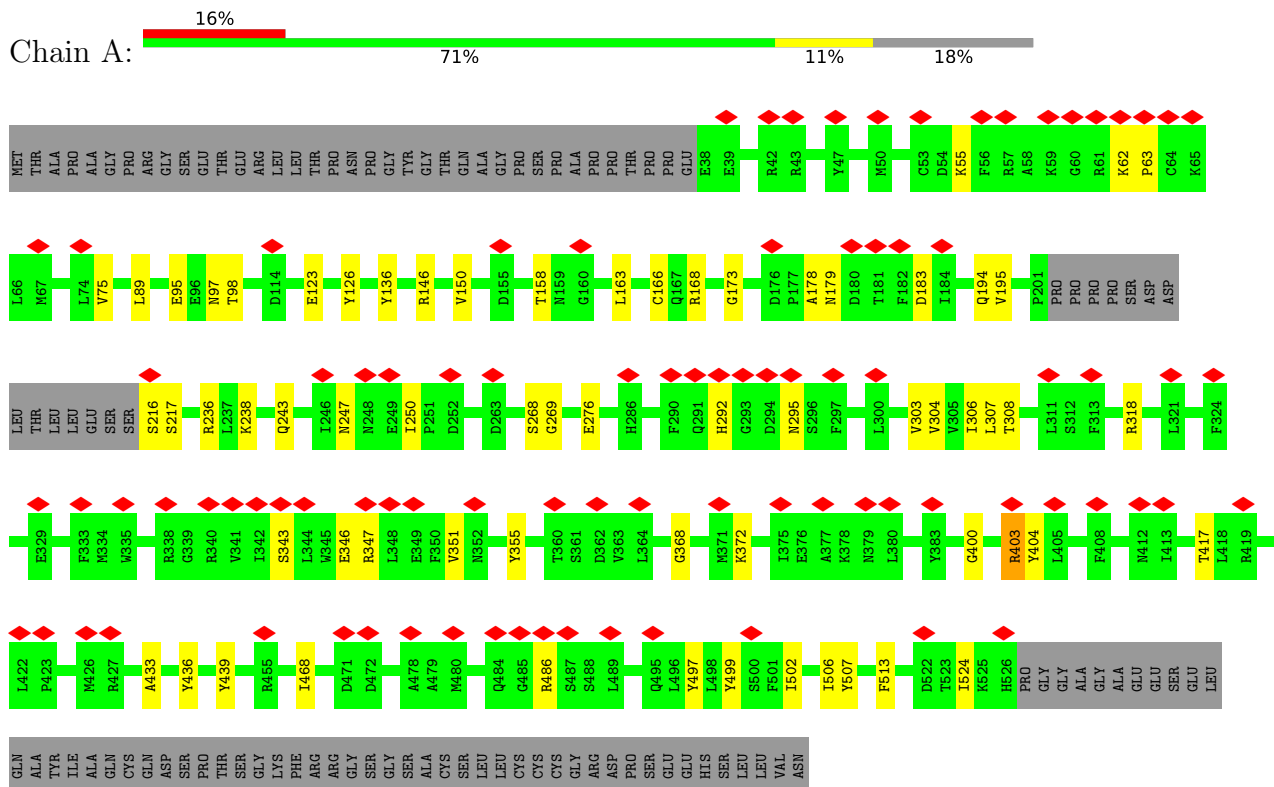


Mol	Chain	Residues	Atoms				AltConf
3	A	1	Total	C	N	O	0
			27	22	2	3	
3	B	1	Total	C	N	O	0
			27	22	2	3	
3	C	1	Total	C	N	O	0
			27	22	2	3	
3	D	1	Total	C	N	O	0
			27	22	2	3	

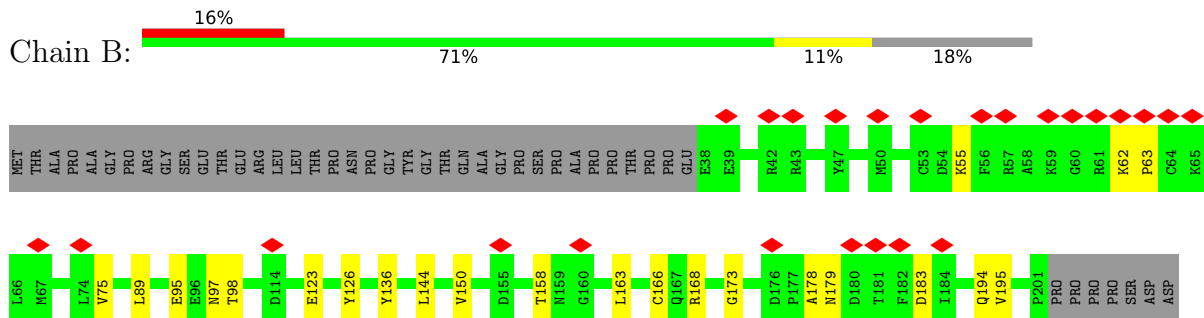
3 Residue-property plots i

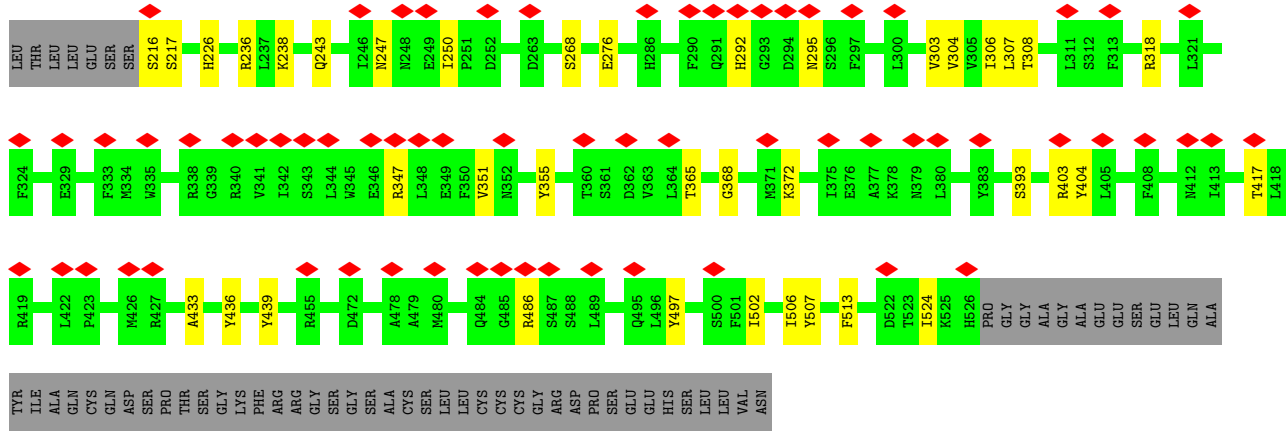
These plots are drawn for all protein, RNA, DNA and oligosaccharide chains in the entry. The first graphic for a chain summarises the proportions of the various outlier classes displayed in the second graphic. The second graphic shows the sequence view annotated by issues in geometry and atom inclusion in map density. Residues are color-coded according to the number of geometric quality criteria for which they contain at least one outlier: green = 0, yellow = 1, orange = 2 and red = 3 or more. A red diamond above a residue indicates a poor fit to the EM map for this residue (all-atom inclusion < 40%). Stretches of 2 or more consecutive residues without any outlier are shown as a green connector. Residues present in the sample, but not in the model, are shown in grey.

- Molecule 1: Mucolipin-1

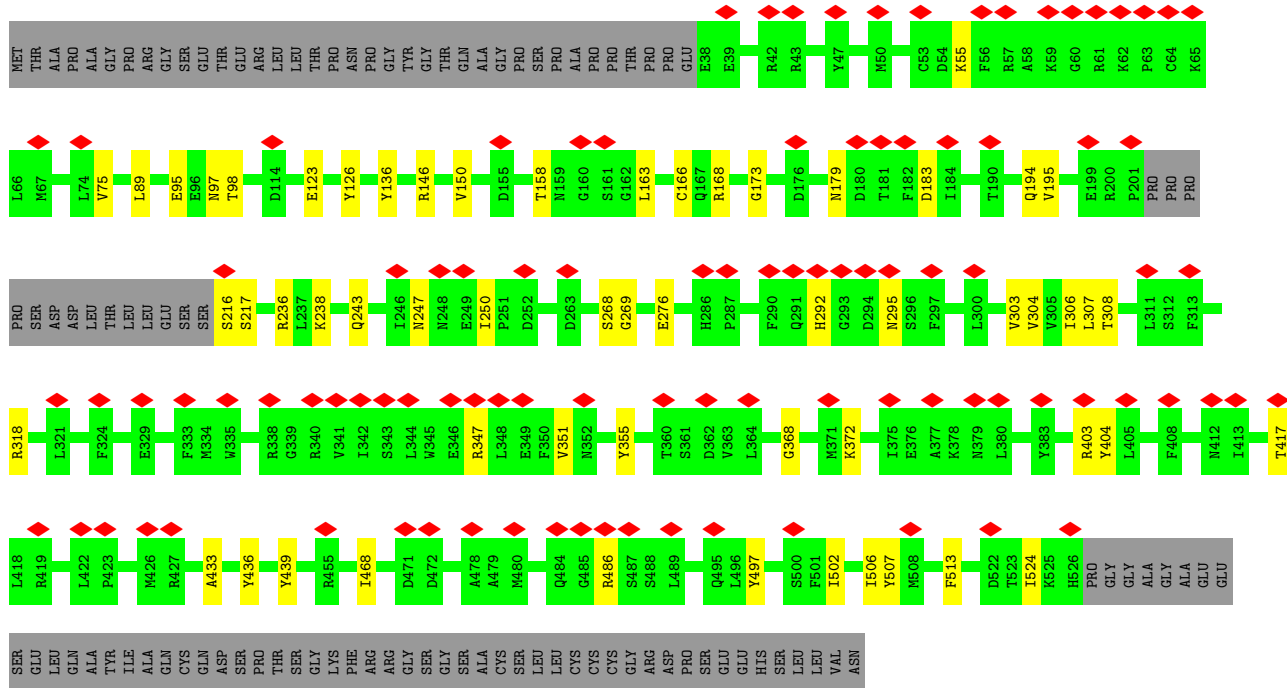
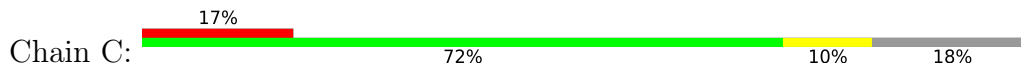


- Molecule 1: Mucolipin-1

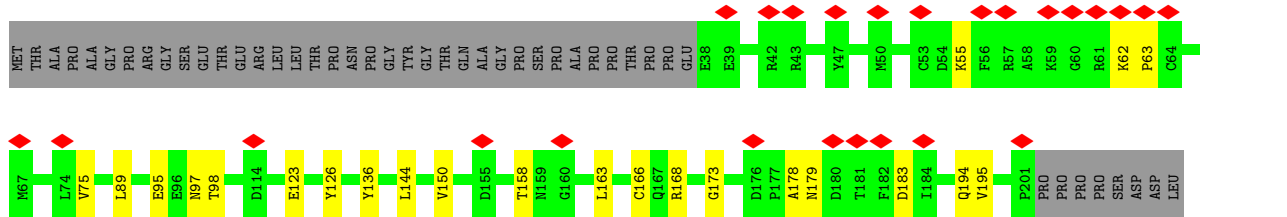


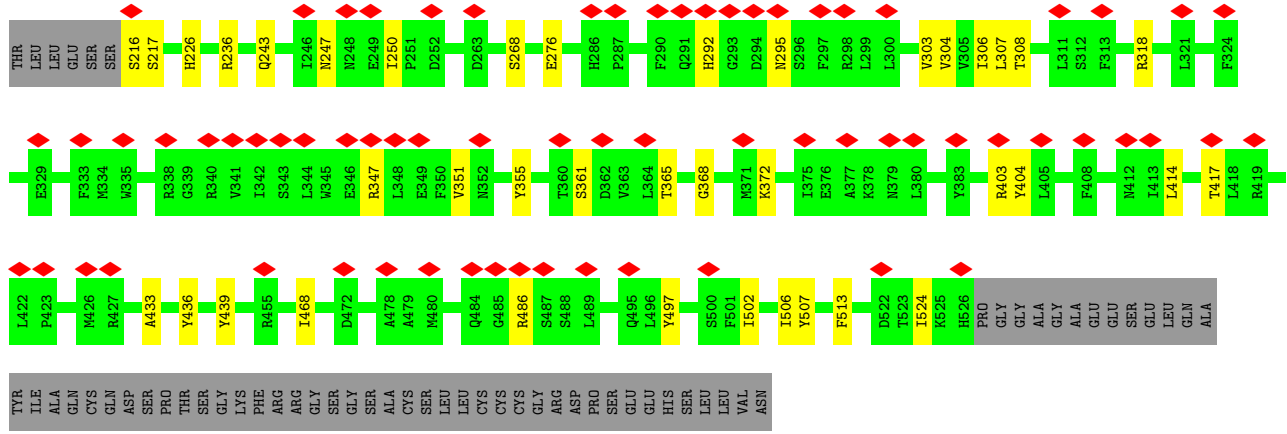


● Molecule 1: Mucolinipin-1



● Molecule 1: Mucolinipin-1





4 Experimental information

Property	Value	Source
EM reconstruction method	SINGLE PARTICLE	Depositor
Imposed symmetry	POINT, Not provided	
Number of particles used	45481	Depositor
Resolution determination method	FSC 0.143 CUT-OFF	Depositor
CTF correction method	PHASE FLIPPING AND AMPLITUDE CORRECTION	Depositor
Microscope	FEI TITAN KRIOS	Depositor
Voltage (kV)	300	Depositor
Electron dose ($e^-/\text{\AA}^2$)	1.6	Depositor
Minimum defocus (nm)	Not provided	
Maximum defocus (nm)	Not provided	
Magnification	Not provided	
Image detector	GATAN K2 SUMMIT (4k x 4k)	Depositor
Maximum map value	9.428	Depositor
Minimum map value	-4.991	Depositor
Average map value	-0.038	Depositor
Map value standard deviation	0.428	Depositor
Recommended contour level	2.98	Depositor
Map size (Å)	321.00003, 321.00003, 321.00003	wwPDB
Map dimensions	300, 300, 300	wwPDB
Map angles (°)	90.0, 90.0, 90.0	wwPDB
Pixel spacing (Å)	1.07, 1.07, 1.07	Depositor

5 Model quality

5.1 Standard geometry

Bond lengths and bond angles in the following residue types are not validated in this section: HZ7, AQV

The Z score for a bond length (or angle) is the number of standard deviations the observed value is removed from the expected value. A bond length (or angle) with $|Z| > 5$ is considered an outlier worth inspection. RMSZ is the root-mean-square of all Z scores of the bond lengths (or angles).

Mol	Chain	Bond lengths		Bond angles	
		RMSZ	# Z >5	RMSZ	# Z >5
1	A	0.44	0/3925	0.60	0/5326
1	B	0.44	0/3925	0.60	0/5326
1	C	0.44	0/3925	0.60	0/5326
1	D	0.44	0/3925	0.60	0/5326
All	All	0.44	0/15700	0.60	0/21304

Chiral center outliers are detected by calculating the chiral volume of a chiral center and verifying if the center is modelled as a planar moiety or with the opposite hand. A planarity outlier is detected by checking planarity of atoms in a peptide group, atoms in a mainchain group or atoms of a sidechain that are expected to be planar.

Mol	Chain	#Chirality outliers	#Planarity outliers
1	A	0	1
1	B	0	1
1	C	0	1
1	D	0	1
All	All	0	4

There are no bond length outliers.

There are no bond angle outliers.

There are no chirality outliers.

All (4) planarity outliers are listed below:

Mol	Chain	Res	Type	Group
1	A	179	ASN	Peptide
1	B	179	ASN	Peptide
1	C	179	ASN	Peptide
1	D	179	ASN	Peptide

5.2 Too-close contacts

In the following table, the Non-H and H(model) columns list the number of non-hydrogen atoms and hydrogen atoms in the chain respectively. The H(added) column lists the number of hydrogen atoms added and optimized by MolProbity. The Clashes column lists the number of clashes within the asymmetric unit, whereas Symm-Clashes lists symmetry-related clashes.

Mol	Chain	Non-H	H(model)	H(added)	Clashes	Symm-Clashes
1	A	3830	0	3856	49	0
1	B	3830	0	3856	47	0
1	C	3830	0	3856	47	0
1	D	3830	0	3856	51	0
2	A	47	0	0	5	0
2	B	47	0	0	5	0
2	C	47	0	0	4	0
2	D	47	0	0	4	0
3	A	27	0	0	6	0
3	B	27	0	0	6	0
3	C	27	0	0	6	0
3	D	27	0	0	6	0
All	All	15616	0	15424	177	0

The all-atom clashscore is defined as the number of clashes found per 1000 atoms (including hydrogen atoms). The all-atom clashscore for this structure is 6.

All (177) close contacts within the same asymmetric unit are listed below, sorted by their clash magnitude.

Atom-1	Atom-2	Interatomic distance (Å)	Clash overlap (Å)
1:D:436:TYR:CB	3:D:802:AQV:O3	1.74	1.35
1:C:436:TYR:CB	3:C:802:AQV:O3	1.74	1.35
1:A:436:TYR:CB	3:A:802:AQV:O3	1.74	1.34
1:B:436:TYR:CB	3:B:802:AQV:O3	1.74	1.32
1:C:433:ALA:HB2	3:C:802:AQV:C17	1.71	1.21
1:D:433:ALA:HB2	3:D:802:AQV:C17	1.71	1.20
1:B:433:ALA:HB2	3:B:802:AQV:C17	1.71	1.20
1:A:433:ALA:HB2	3:A:802:AQV:C17	1.71	1.19
1:D:436:TYR:HB3	3:D:802:AQV:O3	1.38	1.15
1:B:436:TYR:HB3	3:B:802:AQV:O3	1.38	1.14
1:A:436:TYR:HB3	3:A:802:AQV:O3	1.38	1.12
1:C:436:TYR:HB3	3:C:802:AQV:O3	1.38	1.10
1:C:436:TYR:HB2	3:C:802:AQV:O3	1.56	1.05
1:A:436:TYR:HB2	3:A:802:AQV:O3	1.56	1.05
1:D:355:TYR:CE2	1:D:403:ARG:NH1	2.25	1.04

Continued on next page...

Continued from previous page...

Atom-1	Atom-2	Interatomic distance (Å)	Clash overlap (Å)
1:B:436:TYR:HB2	3:B:802:AQV:O3	1.56	1.04
1:D:436:TYR:HB2	3:D:802:AQV:O3	1.56	1.01
1:B:355:TYR:CE2	1:B:403:ARG:NH1	2.35	0.95
1:C:355:TYR:CE2	1:C:403:ARG:NH1	2.43	0.85
1:C:433:ALA:CB	3:C:802:AQV:C17	2.56	0.84
1:B:433:ALA:CB	3:B:802:AQV:C17	2.56	0.83
1:D:433:ALA:CB	3:D:802:AQV:C17	2.56	0.81
1:B:55:LYS:CE	2:B:801:HZ7:O7	2.29	0.81
1:A:55:LYS:CE	2:A:801:HZ7:O7	2.29	0.81
1:C:55:LYS:CE	2:C:801:HZ7:O7	2.29	0.80
1:D:55:LYS:CE	2:D:801:HZ7:O7	2.29	0.80
1:A:433:ALA:CB	3:A:802:AQV:C17	2.56	0.80
1:D:355:TYR:CZ	1:D:403:ARG:NH2	2.53	0.77
1:C:355:TYR:HE2	1:C:403:ARG:HH12	1.35	0.73
1:A:400:GLY:O	1:A:403:ARG:HG2	1.94	0.68
1:A:173:GLY:HA2	1:A:183:ASP:HB3	1.77	0.67
1:C:173:GLY:HA2	1:C:183:ASP:HB3	1.77	0.66
1:C:355:TYR:CZ	1:C:403:ARG:NH2	2.64	0.66
1:D:173:GLY:HA2	1:D:183:ASP:HB3	1.77	0.66
1:B:173:GLY:HA2	1:B:183:ASP:HB3	1.77	0.65
1:B:355:TYR:CZ	1:B:403:ARG:NH2	2.64	0.64
1:B:268:SER:O	1:C:97:ASN:ND2	2.32	0.63
1:B:486:ARG:HH21	1:C:276:GLU:HG3	1.64	0.62
1:A:403:ARG:HD3	1:A:404:TYR:CE2	2.34	0.61
1:C:486:ARG:HH21	1:D:276:GLU:HG3	1.66	0.60
1:A:486:ARG:HH21	1:B:276:GLU:HG3	1.68	0.59
1:B:436:TYR:CG	3:B:802:AQV:O3	2.55	0.59
1:D:55:LYS:NZ	2:D:801:HZ7:O7	2.36	0.59
1:D:436:TYR:CG	3:D:802:AQV:O3	2.55	0.59
1:A:55:LYS:NZ	2:A:801:HZ7:O7	2.36	0.58
1:C:55:LYS:NZ	2:C:801:HZ7:O7	2.36	0.58
1:A:97:ASN:ND2	1:D:268:SER:O	2.37	0.58
1:A:276:GLU:HG3	1:D:486:ARG:HH21	1.68	0.57
1:A:400:GLY:O	1:A:403:ARG:CG	2.51	0.57
1:C:436:TYR:CG	3:C:802:AQV:O3	2.55	0.57
1:D:355:TYR:HE2	1:D:403:ARG:HH12	1.37	0.57
1:B:55:LYS:NZ	2:B:801:HZ7:O7	2.36	0.57
1:C:268:SER:O	1:D:97:ASN:ND2	2.38	0.56
1:A:513:PHE:HE2	1:D:507:TYR:HB3	1.70	0.56
1:A:247:ASN:ND2	1:A:250:ILE:O	2.39	0.56
1:C:247:ASN:ND2	1:C:250:ILE:O	2.39	0.55

Continued on next page...

Continued from previous page...

Atom-1	Atom-2	Interatomic distance (Å)	Clash overlap (Å)
1:B:247:ASN:ND2	1:B:250:ILE:O	2.39	0.55
1:A:436:TYR:CG	3:A:802:AQV:O3	2.55	0.55
1:D:247:ASN:ND2	1:D:250:ILE:O	2.39	0.55
1:A:55:LYS:HE2	2:A:801:HZ7:O7	2.07	0.55
1:B:55:LYS:HE2	2:B:801:HZ7:O7	2.07	0.55
1:B:355:TYR:HE2	1:B:403:ARG:HH12	1.39	0.54
1:D:55:LYS:HE2	2:D:801:HZ7:O7	2.07	0.54
1:C:55:LYS:HE2	2:C:801:HZ7:O7	2.07	0.54
1:A:268:SER:O	1:B:97:ASN:ND2	2.41	0.53
1:D:355:TYR:CE1	1:D:403:ARG:NH2	2.66	0.51
1:D:292:HIS:HA	1:D:295:ASN:HB2	1.93	0.51
1:D:163:LEU:HB3	1:D:195:VAL:HG13	1.93	0.51
1:C:163:LEU:HB3	1:C:195:VAL:HG13	1.93	0.51
1:B:163:LEU:HB3	1:B:195:VAL:HG13	1.93	0.50
1:C:507:TYR:HB3	1:D:513:PHE:HE2	1.75	0.50
1:B:507:TYR:HB3	1:C:513:PHE:HE2	1.76	0.50
1:A:439:TYR:OH	1:A:497:TYR:O	2.30	0.50
1:B:178:ALA:HB2	1:C:238:LYS:HD2	1.94	0.50
1:B:292:HIS:HA	1:B:295:ASN:HB2	1.93	0.50
1:A:238:LYS:HD2	1:D:178:ALA:HB2	1.94	0.50
1:A:507:TYR:HB3	1:B:513:PHE:HE2	1.77	0.50
1:C:303:VAL:HA	1:C:306:ILE:HG22	1.93	0.50
1:A:292:HIS:HA	1:A:295:ASN:HB2	1.93	0.49
1:C:75:VAL:HG21	1:C:308:THR:HG21	1.95	0.49
1:C:292:HIS:HA	1:C:295:ASN:HB2	1.93	0.49
1:D:75:VAL:HG21	1:D:308:THR:HG21	1.94	0.49
1:D:303:VAL:HA	1:D:306:ILE:HG22	1.93	0.49
1:B:303:VAL:HA	1:B:306:ILE:HG22	1.93	0.49
1:B:439:TYR:OH	1:B:497:TYR:O	2.30	0.49
1:A:163:LEU:HB3	1:A:195:VAL:HG13	1.93	0.49
1:C:355:TYR:CE1	1:C:403:ARG:NH2	2.77	0.49
1:C:368:GLY:O	1:C:372:LYS:N	2.46	0.49
1:A:158:THR:HG23	1:A:194:GLN:HE22	1.78	0.49
1:A:303:VAL:HA	1:A:306:ILE:HG22	1.93	0.49
1:B:158:THR:HG23	1:B:194:GLN:HE22	1.78	0.49
1:A:368:GLY:O	1:A:372:LYS:N	2.46	0.48
1:B:75:VAL:HG21	1:B:308:THR:HG21	1.95	0.48
1:D:439:TYR:OH	1:D:497:TYR:O	2.30	0.48
1:B:368:GLY:O	1:B:372:LYS:N	2.46	0.48
1:D:368:GLY:O	1:D:372:LYS:N	2.46	0.48
1:A:95:GLU:O	1:A:98:THR:OG1	2.30	0.48

Continued on next page...

Continued from previous page...

Atom-1	Atom-2	Interatomic distance (Å)	Clash overlap (Å)
1:A:75:VAL:HG21	1:A:308:THR:HG21	1.94	0.48
1:A:318:ARG:NH1	2:A:801:HZ7:O14	2.41	0.48
1:C:158:THR:HG23	1:C:194:GLN:HE22	1.78	0.48
1:C:216:SER:OG	1:C:217:SER:N	2.47	0.48
1:D:158:THR:HG23	1:D:194:GLN:HE22	1.78	0.48
1:C:439:TYR:OH	1:C:497:TYR:O	2.30	0.48
1:A:355:TYR:CE2	1:A:403:ARG:NH1	2.73	0.48
1:B:216:SER:OG	1:B:217:SER:N	2.47	0.47
1:D:355:TYR:CD2	1:D:403:ARG:NH1	2.69	0.47
1:B:303:VAL:O	1:B:307:LEU:N	2.48	0.47
1:C:403:ARG:HD3	1:C:404:TYR:CE2	2.50	0.47
1:C:303:VAL:O	1:C:307:LEU:N	2.48	0.47
1:B:226:HIS:HB2	1:C:146:ARG:HD2	1.96	0.47
1:D:355:TYR:CE2	1:D:403:ARG:CZ	2.97	0.47
1:A:216:SER:OG	1:A:217:SER:N	2.47	0.47
1:C:417:THR:HG22	1:C:524:ILE:HG21	1.97	0.47
1:B:417:THR:HG22	1:B:524:ILE:HG21	1.97	0.46
1:A:303:VAL:O	1:A:307:LEU:N	2.48	0.46
1:D:303:VAL:O	1:D:307:LEU:N	2.48	0.46
1:A:417:THR:HG22	1:A:524:ILE:HG21	1.97	0.46
1:A:502:ILE:HB	1:A:506:ILE:HD12	1.98	0.46
1:D:361:SER:O	1:D:365:THR:OG1	2.28	0.45
1:D:502:ILE:HB	1:D:506:ILE:HD12	1.98	0.45
1:A:304:VAL:HA	1:A:307:LEU:HD12	1.99	0.45
1:B:318:ARG:NH1	2:B:801:HZ7:O14	2.41	0.45
1:C:318:ARG:NH1	2:C:801:HZ7:O14	2.41	0.45
1:C:347:ARG:O	1:C:351:VAL:N	2.49	0.45
1:D:304:VAL:HA	1:D:307:LEU:HD12	1.99	0.45
1:C:304:VAL:HA	1:C:307:LEU:HD12	1.99	0.45
1:B:304:VAL:HA	1:B:307:LEU:HD12	1.99	0.45
1:C:123:GLU:HA	1:C:126:TYR:HD2	1.82	0.45
1:C:355:TYR:CE2	1:C:403:ARG:NH2	2.85	0.45
1:D:417:THR:HG22	1:D:524:ILE:HG21	1.97	0.45
1:D:123:GLU:HA	1:D:126:TYR:HD2	1.82	0.45
1:B:123:GLU:HA	1:B:126:TYR:HD2	1.82	0.44
1:B:502:ILE:HB	1:B:506:ILE:HD12	1.98	0.44
1:A:123:GLU:HA	1:A:126:TYR:HD2	1.82	0.44
1:A:343:SER:OG	1:A:346:GLU:OE1	2.28	0.44
1:A:136:TYR:CE2	1:A:163:LEU:HB2	2.53	0.44
1:B:347:ARG:O	1:B:351:VAL:N	2.49	0.44
1:C:502:ILE:HB	1:C:506:ILE:HD12	1.98	0.44

Continued on next page...

Continued from previous page...

Atom-1	Atom-2	Interatomic distance (Å)	Clash overlap (Å)
1:D:216:SER:OG	1:D:217:SER:N	2.47	0.44
1:B:150:VAL:HG11	1:B:236:ARG:HB2	2.00	0.44
1:D:136:TYR:CE2	1:D:163:LEU:HB2	2.53	0.44
1:B:166:CYS:HB3	1:B:168:ARG:NH2	2.33	0.43
1:D:166:CYS:HB3	1:D:168:ARG:NH2	2.33	0.43
1:A:150:VAL:HG11	1:A:236:ARG:HB2	2.00	0.43
1:C:150:VAL:HG11	1:C:236:ARG:HB2	2.00	0.43
1:D:150:VAL:HG11	1:D:236:ARG:HB2	2.00	0.43
1:D:347:ARG:O	1:D:351:VAL:N	2.49	0.43
1:A:166:CYS:HB3	1:A:168:ARG:NH2	2.33	0.43
1:C:166:CYS:HB3	1:C:168:ARG:NH2	2.33	0.43
1:D:403:ARG:HD3	1:D:404:TYR:CE2	2.54	0.43
1:C:136:TYR:CE2	1:C:163:LEU:HB2	2.53	0.43
1:B:136:TYR:CE2	1:B:163:LEU:HB2	2.53	0.43
1:D:318:ARG:NH1	2:D:801:HZ7:O14	2.41	0.43
1:B:403:ARG:HD3	1:B:404:TYR:CE2	2.53	0.42
1:C:95:GLU:O	1:C:98:THR:OG1	2.30	0.42
1:D:95:GLU:O	1:D:98:THR:OG1	2.30	0.42
1:D:89:LEU:HD23	1:D:243:GLN:HB3	2.01	0.42
1:A:269:GLY:HA2	1:B:144:LEU:HD12	2.00	0.42
1:A:499:TYR:HD1	1:A:499:TYR:HA	1.75	0.42
1:B:62:LYS:HA	1:B:63:PRO:HD3	1.84	0.42
1:B:89:LEU:HD23	1:B:243:GLN:HB3	2.01	0.41
1:B:95:GLU:O	1:B:98:THR:OG1	2.30	0.41
1:A:62:LYS:HA	1:A:63:PRO:HD3	1.84	0.41
1:A:89:LEU:HD23	1:A:243:GLN:HB3	2.01	0.41
1:C:89:LEU:HD23	1:C:243:GLN:HB3	2.01	0.41
2:B:801:HZ7:O6	2:B:801:HZ7:O8	2.39	0.41
1:C:269:GLY:HA2	1:D:144:LEU:HD12	2.03	0.41
1:A:347:ARG:O	1:A:351:VAL:N	2.49	0.41
1:C:468:ILE:HA	1:C:506:ILE:HD11	2.03	0.41
1:A:178:ALA:HB2	1:B:238:LYS:HD2	2.03	0.40
1:D:468:ILE:HA	1:D:506:ILE:HD11	2.03	0.40
1:D:62:LYS:HA	1:D:63:PRO:HD3	1.84	0.40
1:D:414:LEU:HD23	1:D:414:LEU:HA	1.89	0.40
1:A:468:ILE:HA	1:A:506:ILE:HD11	2.03	0.40
2:A:801:HZ7:O6	2:A:801:HZ7:O8	2.39	0.40
1:A:146:ARG:HD2	1:D:226:HIS:HB2	2.04	0.40
1:B:365:THR:OG1	1:B:393:SER:OG	2.37	0.40

There are no symmetry-related clashes.

5.3 Torsion angles [i](#)

5.3.1 Protein backbone [i](#)

In the following table, the Percentiles column shows the percent Ramachandran outliers of the chain as a percentile score with respect to all PDB entries followed by that with respect to all EM entries.

The Analysed column shows the number of residues for which the backbone conformation was analysed, and the total number of residues.

Mol	Chain	Analysed	Favoured	Allowed	Outliers	Percentiles	
1	A	471/580 (81%)	420 (89%)	51 (11%)	0	100	100
1	B	471/580 (81%)	420 (89%)	51 (11%)	0	100	100
1	C	471/580 (81%)	420 (89%)	51 (11%)	0	100	100
1	D	471/580 (81%)	421 (89%)	50 (11%)	0	100	100
All	All	1884/2320 (81%)	1681 (89%)	203 (11%)	0	100	100

There are no Ramachandran outliers to report.

5.3.2 Protein sidechains [i](#)

In the following table, the Percentiles column shows the percent sidechain outliers of the chain as a percentile score with respect to all PDB entries followed by that with respect to all EM entries.

The Analysed column shows the number of residues for which the sidechain conformation was analysed, and the total number of residues.

Mol	Chain	Analysed	Rotameric	Outliers	Percentiles	
1	A	423/507 (83%)	422 (100%)	1 (0%)	93	97
1	B	423/507 (83%)	423 (100%)	0	100	100
1	C	423/507 (83%)	423 (100%)	0	100	100
1	D	423/507 (83%)	423 (100%)	0	100	100
All	All	1692/2028 (83%)	1691 (100%)	1 (0%)	93	98

All (1) residues with a non-rotameric sidechain are listed below:

Mol	Chain	Res	Type
1	A	403	ARG

Sometimes sidechains can be flipped to improve hydrogen bonding and reduce clashes. All (18)

such sidechains are listed below:

Mol	Chain	Res	Type
1	A	69	GLN
1	A	97	ASN
1	A	234	HIS
1	A	469	ASN
1	B	69	GLN
1	B	97	ASN
1	B	234	HIS
1	B	247	ASN
1	B	469	ASN
1	C	69	GLN
1	C	97	ASN
1	C	234	HIS
1	C	469	ASN
1	D	69	GLN
1	D	97	ASN
1	D	234	HIS
1	D	247	ASN
1	D	469	ASN

5.3.3 RNA [i](#)

There are no RNA molecules in this entry.

5.4 Non-standard residues in protein, DNA, RNA chains [i](#)

There are no non-standard protein/DNA/RNA residues in this entry.

5.5 Carbohydrates [i](#)

There are no monosaccharides in this entry.

5.6 Ligand geometry [i](#)

8 ligands are modelled in this entry.

In the following table, the Counts columns list the number of bonds (or angles) for which Mogul statistics could be retrieved, the number of bonds (or angles) that are observed in the model and the number of bonds (or angles) that are defined in the Chemical Component Dictionary. The Link column lists molecule types, if any, to which the group is linked. The Z score for a bond length (or angle) is the number of standard deviations the observed value is removed from the

expected value. A bond length (or angle) with $|Z| > 2$ is considered an outlier worth inspection. RMSZ is the root-mean-square of all Z scores of the bond lengths (or angles).

Mol	Type	Chain	Res	Link	Bond lengths			Bond angles		
					Counts	RMSZ	# $ Z > 2$	Counts	RMSZ	# $ Z > 2$
2	HZ7	C	801	-	47,47,47	0.68	0	59,65,65	0.97	4 (6%)
3	AQV	B	802	-	30,30,30	4.29	16 (53%)	42,46,46	2.69	16 (38%)
3	AQV	C	802	-	30,30,30	4.28	16 (53%)	42,46,46	2.68	16 (38%)
2	HZ7	A	801	-	47,47,47	0.69	0	59,65,65	0.97	4 (6%)
2	HZ7	D	801	-	47,47,47	0.68	0	59,65,65	0.97	4 (6%)
2	HZ7	B	801	-	47,47,47	0.68	0	59,65,65	0.97	4 (6%)
3	AQV	D	802	-	30,30,30	4.29	16 (53%)	42,46,46	2.68	16 (38%)
3	AQV	A	802	-	30,30,30	4.29	17 (56%)	42,46,46	2.69	16 (38%)

In the following table, the Chirals column lists the number of chiral outliers, the number of chiral centers analysed, the number of these observed in the model and the number defined in the Chemical Component Dictionary. Similar counts are reported in the Torsion and Rings columns. '-' means no outliers of that kind were identified.

Mol	Type	Chain	Res	Link	Chirals	Torsions	Rings
2	HZ7	C	801	-	-	12/44/68/68	0/1/1/1
3	AQV	B	802	-	-	4/8/43/43	0/4/4/4
3	AQV	C	802	-	-	4/8/43/43	0/4/4/4
2	HZ7	A	801	-	-	12/44/68/68	0/1/1/1
2	HZ7	D	801	-	-	12/44/68/68	0/1/1/1
2	HZ7	B	801	-	-	12/44/68/68	0/1/1/1
3	AQV	D	802	-	-	4/8/43/43	0/4/4/4
3	AQV	A	802	-	-	4/8/43/43	0/4/4/4

All (65) bond length outliers are listed below:

Mol	Chain	Res	Type	Atoms	Z	Observed(Å)	Ideal(Å)
3	D	802	AQV	O3-C7	12.59	1.47	1.22
3	C	802	AQV	O3-C7	12.57	1.47	1.22
3	B	802	AQV	O3-C7	12.55	1.47	1.22
3	A	802	AQV	O3-C7	12.54	1.47	1.22
3	B	802	AQV	O2-C8	11.68	1.45	1.22
3	A	802	AQV	O2-C8	11.67	1.45	1.22
3	D	802	AQV	O2-C8	11.62	1.45	1.22
3	C	802	AQV	O2-C8	11.62	1.45	1.22
3	D	802	AQV	C10-N2	6.48	1.53	1.38

Continued on next page...

Continued from previous page...

Mol	Chain	Res	Type	Atoms	Z	Observed(Å)	Ideal(Å)
3	A	802	AQV	C10-N2	6.47	1.53	1.38
3	B	802	AQV	C10-N2	6.47	1.53	1.38
3	C	802	AQV	C10-N2	6.47	1.53	1.38
3	B	802	AQV	C8-N1	-5.73	1.32	1.39
3	C	802	AQV	C8-N1	-5.68	1.32	1.39
3	D	802	AQV	C8-N1	-5.67	1.32	1.39
3	A	802	AQV	C8-N1	-5.66	1.32	1.39
3	B	802	AQV	C15-N2	5.55	1.50	1.42
3	C	802	AQV	C15-N2	5.54	1.50	1.42
3	D	802	AQV	C15-N2	5.52	1.50	1.42
3	A	802	AQV	C15-N2	5.46	1.50	1.42
3	D	802	AQV	C11-N2	-4.94	1.45	1.50
3	B	802	AQV	C11-N2	-4.93	1.45	1.50
3	A	802	AQV	C11-N2	-4.88	1.45	1.50
3	C	802	AQV	C11-N2	-4.86	1.45	1.50
3	B	802	AQV	C9-C10	4.79	1.59	1.53
3	C	802	AQV	C9-C10	4.74	1.59	1.53
3	D	802	AQV	C9-C10	4.73	1.59	1.53
3	A	802	AQV	C9-C10	4.73	1.59	1.53
3	A	802	AQV	C2-C1	4.03	1.46	1.39
3	A	802	AQV	C7-N1	-4.01	1.34	1.39
3	D	802	AQV	C7-N1	-3.99	1.34	1.39
3	C	802	AQV	C2-C1	3.97	1.46	1.39
3	B	802	AQV	C7-N1	-3.95	1.34	1.39
3	B	802	AQV	C2-C1	3.94	1.46	1.39
3	C	802	AQV	C7-N1	-3.94	1.34	1.39
3	D	802	AQV	C2-C1	3.91	1.46	1.39
3	B	802	AQV	C1-C7	-3.37	1.43	1.48
3	C	802	AQV	C5-C6	3.36	1.45	1.39
3	B	802	AQV	C5-C6	3.35	1.45	1.39
3	D	802	AQV	C1-C7	-3.34	1.43	1.48
3	C	802	AQV	C1-C7	-3.34	1.43	1.48
3	A	802	AQV	C5-C6	3.33	1.45	1.39
3	A	802	AQV	C1-C7	-3.32	1.43	1.48
3	D	802	AQV	C5-C6	3.31	1.45	1.39
3	A	802	AQV	C6-C8	-3.15	1.43	1.48
3	C	802	AQV	C6-C8	-3.12	1.43	1.48
3	B	802	AQV	C6-C8	-3.12	1.43	1.48
3	D	802	AQV	C6-C8	-3.07	1.43	1.48
3	C	802	AQV	O1-C10	-2.50	1.17	1.23
3	B	802	AQV	C22-C11	2.50	1.58	1.53
3	A	802	AQV	O1-C10	-2.49	1.17	1.23

Continued on next page...

Continued from previous page...

Mol	Chain	Res	Type	Atoms	Z	Observed(Å)	Ideal(Å)
3	A	802	AQV	C22-C11	2.49	1.58	1.53
3	D	802	AQV	O1-C10	-2.48	1.17	1.23
3	B	802	AQV	O1-C10	-2.48	1.17	1.23
3	D	802	AQV	C22-C11	2.47	1.58	1.53
3	C	802	AQV	C22-C11	2.44	1.58	1.53
3	C	802	AQV	C4-C5	2.39	1.44	1.38
3	B	802	AQV	C4-C5	2.37	1.43	1.38
3	A	802	AQV	C4-C5	2.36	1.43	1.38
3	D	802	AQV	C4-C5	2.35	1.43	1.38
3	D	802	AQV	C15-C14	2.07	1.42	1.40
3	C	802	AQV	C15-C14	2.04	1.42	1.40
3	B	802	AQV	C15-C14	2.04	1.42	1.40
3	A	802	AQV	C15-C14	2.03	1.42	1.40
3	A	802	AQV	C18-C17	2.00	1.43	1.38

All (80) bond angle outliers are listed below:

Mol	Chain	Res	Type	Atoms	Z	Observed(°)	Ideal(°)
3	B	802	AQV	O1-C10-C9	-9.21	106.22	120.59
3	A	802	AQV	O1-C10-C9	-9.17	106.28	120.59
3	C	802	AQV	O1-C10-C9	-9.17	106.28	120.59
3	D	802	AQV	O1-C10-C9	-9.16	106.30	120.59
3	D	802	AQV	C22-C11-N2	6.47	122.82	109.58
3	A	802	AQV	C22-C11-N2	6.47	122.81	109.58
3	B	802	AQV	C22-C11-N2	6.46	122.80	109.58
3	C	802	AQV	C22-C11-N2	6.45	122.77	109.58
3	B	802	AQV	C21-C11-C22	-5.62	96.78	108.59
3	A	802	AQV	C21-C11-C22	-5.61	96.82	108.59
3	D	802	AQV	C21-C11-C22	-5.60	96.82	108.59
3	C	802	AQV	C21-C11-C22	-5.59	96.84	108.59
3	A	802	AQV	C6-C8-N1	5.05	109.47	105.88
3	B	802	AQV	C6-C8-N1	5.05	109.47	105.88
3	C	802	AQV	C6-C8-N1	4.99	109.43	105.88
3	D	802	AQV	C6-C8-N1	4.97	109.41	105.88
3	A	802	AQV	C10-C9-N1	3.99	116.23	111.03
3	C	802	AQV	C10-C9-N1	3.98	116.22	111.03
3	B	802	AQV	C10-C9-N1	3.96	116.20	111.03
3	D	802	AQV	C10-C9-N1	3.95	116.18	111.03
3	B	802	AQV	C1-C6-C8	-3.56	105.18	108.26
3	A	802	AQV	C1-C6-C8	-3.53	105.20	108.26
3	D	802	AQV	C1-C6-C8	-3.50	105.22	108.26
3	C	802	AQV	C1-C6-C8	-3.49	105.23	108.26

Continued on next page...

Continued from previous page...

Mol	Chain	Res	Type	Atoms	Z	Observed(°)	Ideal(°)
3	A	802	AQV	C5-C6-C8	3.03	134.57	129.63
3	B	802	AQV	C5-C6-C8	3.01	134.55	129.63
3	C	802	AQV	C5-C6-C8	3.01	134.53	129.63
3	D	802	AQV	C5-C6-C8	3.00	134.52	129.63
3	D	802	AQV	C19-C14-C15	2.70	121.37	118.33
3	A	802	AQV	C19-C14-C15	2.69	121.35	118.33
3	B	802	AQV	C19-C14-C15	2.68	121.35	118.33
3	C	802	AQV	C19-C14-C15	2.65	121.32	118.33
3	C	802	AQV	C11-C12-C13	2.64	119.28	114.48
3	A	802	AQV	C11-C12-C13	2.64	119.28	114.48
3	B	802	AQV	C11-C12-C13	2.64	119.27	114.48
3	D	802	AQV	C11-C12-C13	2.63	119.26	114.48
2	C	801	HZ7	C6-C5-C4	-2.61	107.09	110.85
2	B	801	HZ7	C6-C5-C4	-2.60	107.11	110.85
3	D	802	AQV	C1-C7-N1	2.59	107.72	105.88
2	A	801	HZ7	C6-C5-C4	-2.59	107.12	110.85
2	D	801	HZ7	C6-C5-C4	-2.57	107.15	110.85
3	A	802	AQV	C1-C7-N1	2.53	107.68	105.88
2	C	801	HZ7	C5-C4-C3	-2.53	103.71	108.96
3	B	802	AQV	C1-C7-N1	2.53	107.68	105.88
2	D	801	HZ7	C5-C4-C3	-2.53	103.72	108.96
2	A	801	HZ7	C5-C4-C3	-2.52	103.73	108.96
3	C	802	AQV	C1-C7-N1	2.52	107.67	105.88
2	B	801	HZ7	C5-C4-C3	-2.51	103.75	108.96
2	B	801	HZ7	C6-C1-C2	2.47	114.42	110.85
2	C	801	HZ7	C6-C1-C2	2.47	114.42	110.85
2	D	801	HZ7	C6-C1-C2	2.47	114.41	110.85
2	A	801	HZ7	C6-C1-C2	2.45	114.39	110.85
3	C	802	AQV	C9-N1-C8	2.41	125.70	123.71
3	B	802	AQV	C9-N1-C8	2.40	125.69	123.71
3	C	802	AQV	C17-C16-C15	2.39	123.27	118.26
3	A	802	AQV	C17-C16-C15	2.39	123.27	118.26
3	B	802	AQV	C17-C16-C15	2.37	123.23	118.26
3	A	802	AQV	C9-N1-C8	2.36	125.66	123.71
3	D	802	AQV	C9-N1-C8	2.36	125.66	123.71
3	D	802	AQV	C17-C16-C15	2.36	123.22	118.26
3	A	802	AQV	C16-C15-C14	-2.22	117.23	120.09
3	C	802	AQV	C16-C15-C14	-2.22	117.23	120.09
3	D	802	AQV	C16-C15-C14	-2.21	117.23	120.09
2	B	801	HZ7	C14-C11-C10	-2.21	108.26	113.38
2	D	801	HZ7	C14-C11-C10	-2.21	108.27	113.38
2	A	801	HZ7	C14-C11-C10	-2.21	108.27	113.38

Continued on next page...

Continued from previous page...

Mol	Chain	Res	Type	Atoms	Z	Observed(°)	Ideal(°)
3	B	802	AQV	C20-C13-C12	2.20	113.58	110.31
3	A	802	AQV	C20-C13-C12	2.20	113.58	110.31
2	C	801	HZ7	C14-C11-C10	-2.20	108.29	113.38
3	C	802	AQV	C20-C13-C12	2.20	113.57	110.31
3	B	802	AQV	C16-C15-C14	-2.18	117.28	120.09
3	D	802	AQV	C20-C13-C12	2.17	113.52	110.31
3	B	802	AQV	C2-C1-C7	2.15	133.13	129.63
3	D	802	AQV	C2-C1-C7	2.14	133.13	129.63
3	A	802	AQV	C2-C1-C7	2.12	133.09	129.63
3	C	802	AQV	C2-C1-C7	2.11	133.07	129.63
3	A	802	AQV	C8-N1-C7	-2.08	110.33	112.03
3	C	802	AQV	C8-N1-C7	-2.06	110.35	112.03
3	D	802	AQV	C8-N1-C7	-2.06	110.35	112.03
3	B	802	AQV	C8-N1-C7	-2.06	110.35	112.03

There are no chirality outliers.

All (64) torsion outliers are listed below:

Mol	Chain	Res	Type	Atoms
2	A	801	HZ7	C2-C1-O2-P2
2	B	801	HZ7	C2-C1-O2-P2
2	C	801	HZ7	C2-C1-O2-P2
2	D	801	HZ7	C2-C1-O2-P2
3	A	802	AQV	C10-C9-N1-C7
3	A	802	AQV	C10-C9-N1-C8
3	B	802	AQV	C10-C9-N1-C7
3	B	802	AQV	C10-C9-N1-C8
3	B	802	AQV	O1-C10-C9-N1
3	C	802	AQV	C10-C9-N1-C7
3	C	802	AQV	C10-C9-N1-C8
3	D	802	AQV	C10-C9-N1-C7
3	D	802	AQV	C10-C9-N1-C8
3	D	802	AQV	O1-C10-C9-N1
3	A	802	AQV	O1-C10-C9-N1
3	C	802	AQV	O1-C10-C9-N1
3	A	802	AQV	N2-C10-C9-N1
3	B	802	AQV	N2-C10-C9-N1
3	C	802	AQV	N2-C10-C9-N1
3	D	802	AQV	N2-C10-C9-N1
2	A	801	HZ7	C13-C20-C21-C22
2	B	801	HZ7	C13-C20-C21-C22
2	C	801	HZ7	C13-C20-C21-C22

Continued on next page...

Continued from previous page...

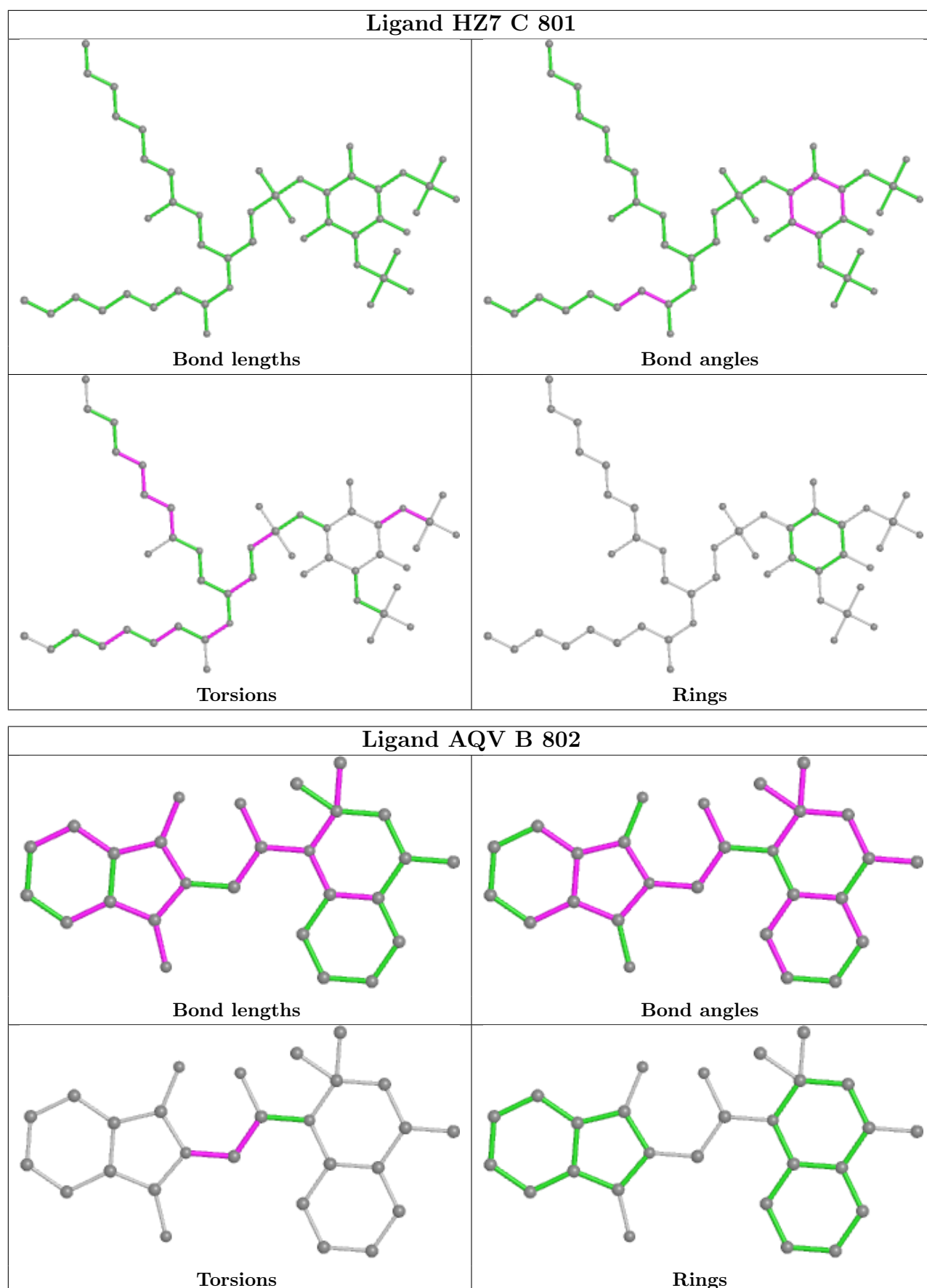
Mol	Chain	Res	Type	Atoms
2	D	801	HZ7	C13-C20-C21-C22
2	A	801	HZ7	O19-C12-C13-C20
2	B	801	HZ7	O19-C12-C13-C20
2	C	801	HZ7	O19-C12-C13-C20
2	D	801	HZ7	O19-C12-C13-C20
2	A	801	HZ7	O8-C7-C8-C9
2	B	801	HZ7	O8-C7-C8-C9
2	C	801	HZ7	O8-C7-C8-C9
2	D	801	HZ7	O8-C7-C8-C9
2	A	801	HZ7	C20-C21-C22-C23
2	B	801	HZ7	C20-C21-C22-C23
2	C	801	HZ7	C20-C21-C22-C23
2	D	801	HZ7	C20-C21-C22-C23
2	A	801	HZ7	C11-C10-O17-C8
2	B	801	HZ7	C11-C10-O17-C8
2	C	801	HZ7	C11-C10-O17-C8
2	D	801	HZ7	C11-C10-O17-C8
2	A	801	HZ7	C12-C13-C20-C21
2	B	801	HZ7	C12-C13-C20-C21
2	C	801	HZ7	C12-C13-C20-C21
2	D	801	HZ7	C12-C13-C20-C21
2	A	801	HZ7	O8-C7-C8-O17
2	B	801	HZ7	O8-C7-C8-O17
2	C	801	HZ7	O8-C7-C8-O17
2	D	801	HZ7	O8-C7-C8-O17
2	A	801	HZ7	C7-O8-P1-O3
2	B	801	HZ7	C7-O8-P1-O3
2	C	801	HZ7	C7-O8-P1-O3
2	D	801	HZ7	C7-O8-P1-O3
2	A	801	HZ7	C14-C15-C16-C17
2	C	801	HZ7	C14-C15-C16-C17
2	B	801	HZ7	C14-C15-C16-C17
2	D	801	HZ7	C14-C15-C16-C17
2	A	801	HZ7	C1-O2-P2-O11
2	B	801	HZ7	C1-O2-P2-O11
2	C	801	HZ7	C1-O2-P2-O11
2	D	801	HZ7	C1-O2-P2-O11
2	A	801	HZ7	C10-C11-C14-C15
2	B	801	HZ7	C10-C11-C14-C15
2	C	801	HZ7	C10-C11-C14-C15
2	D	801	HZ7	C10-C11-C14-C15

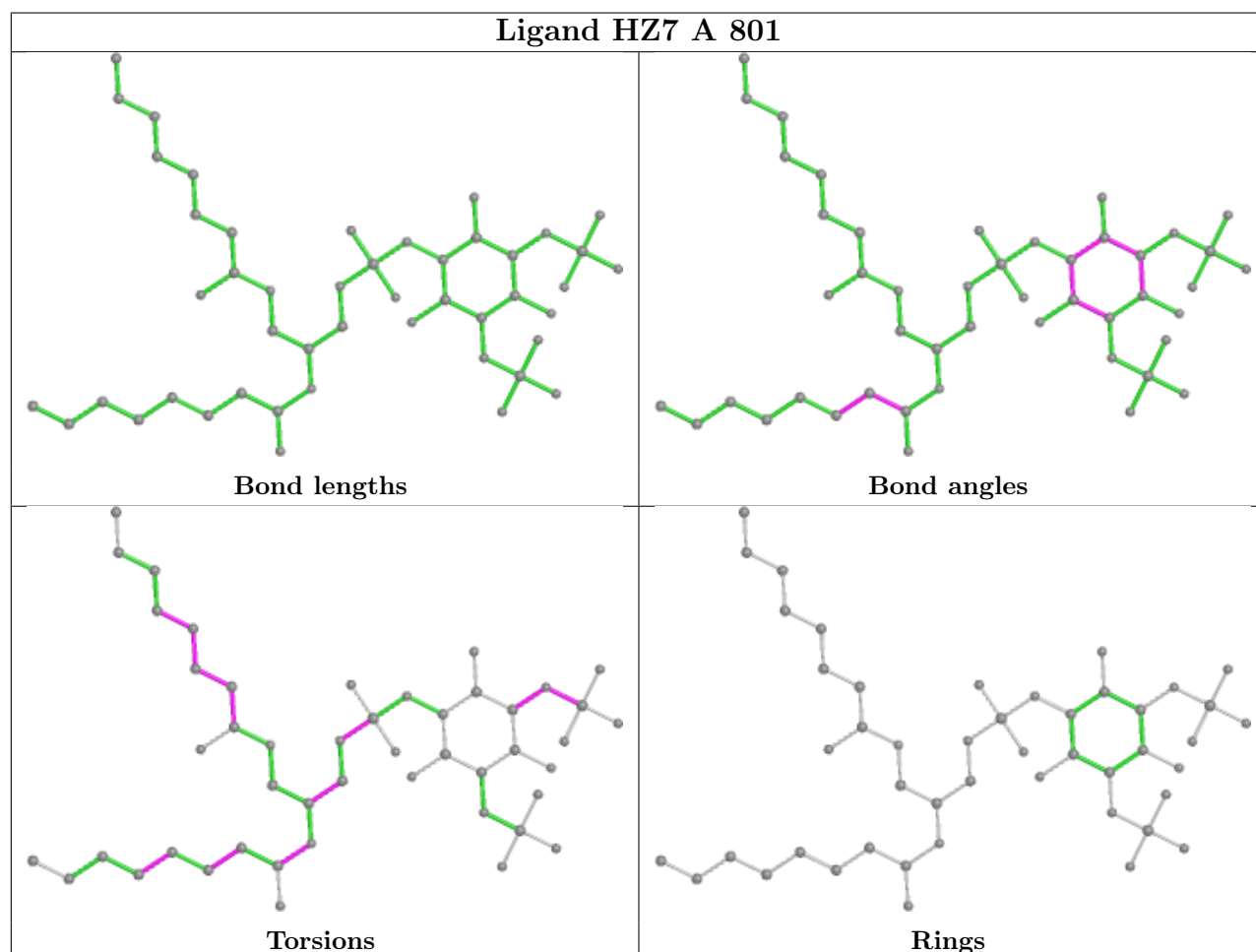
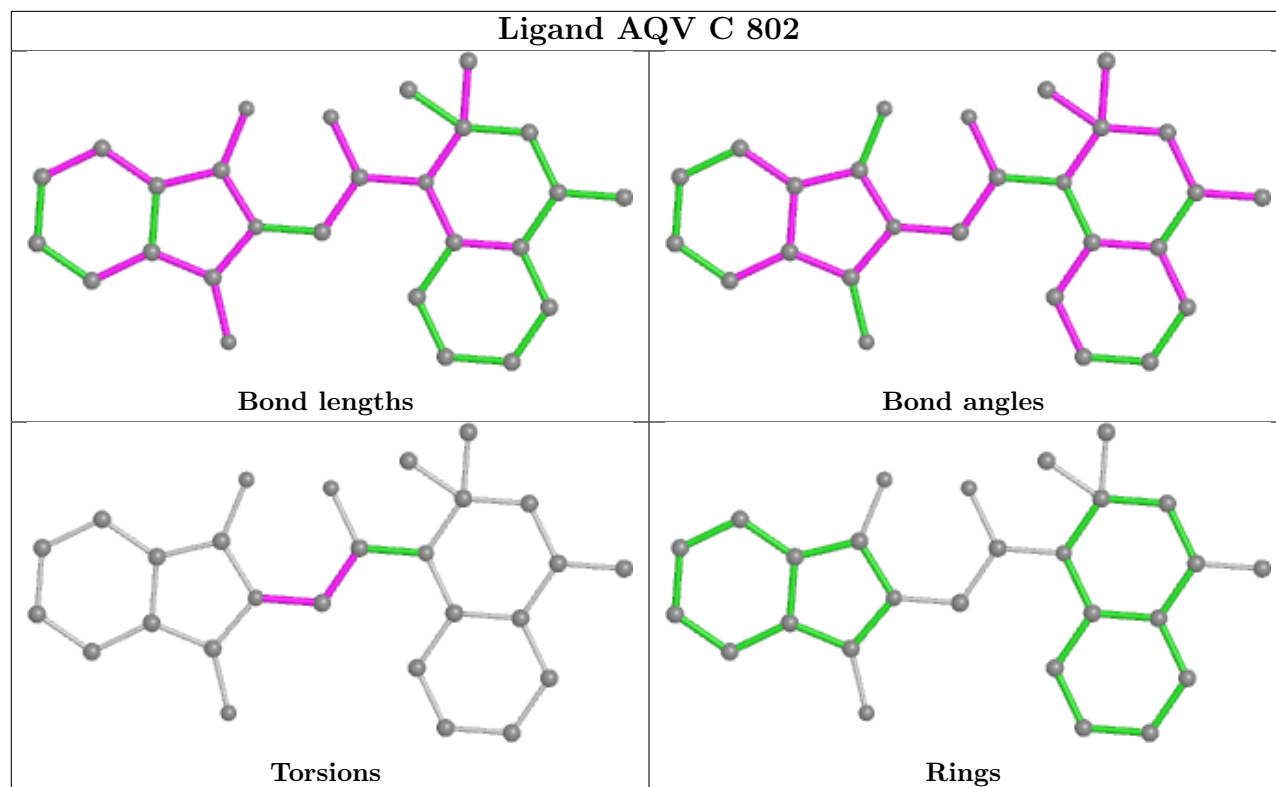
There are no ring outliers.

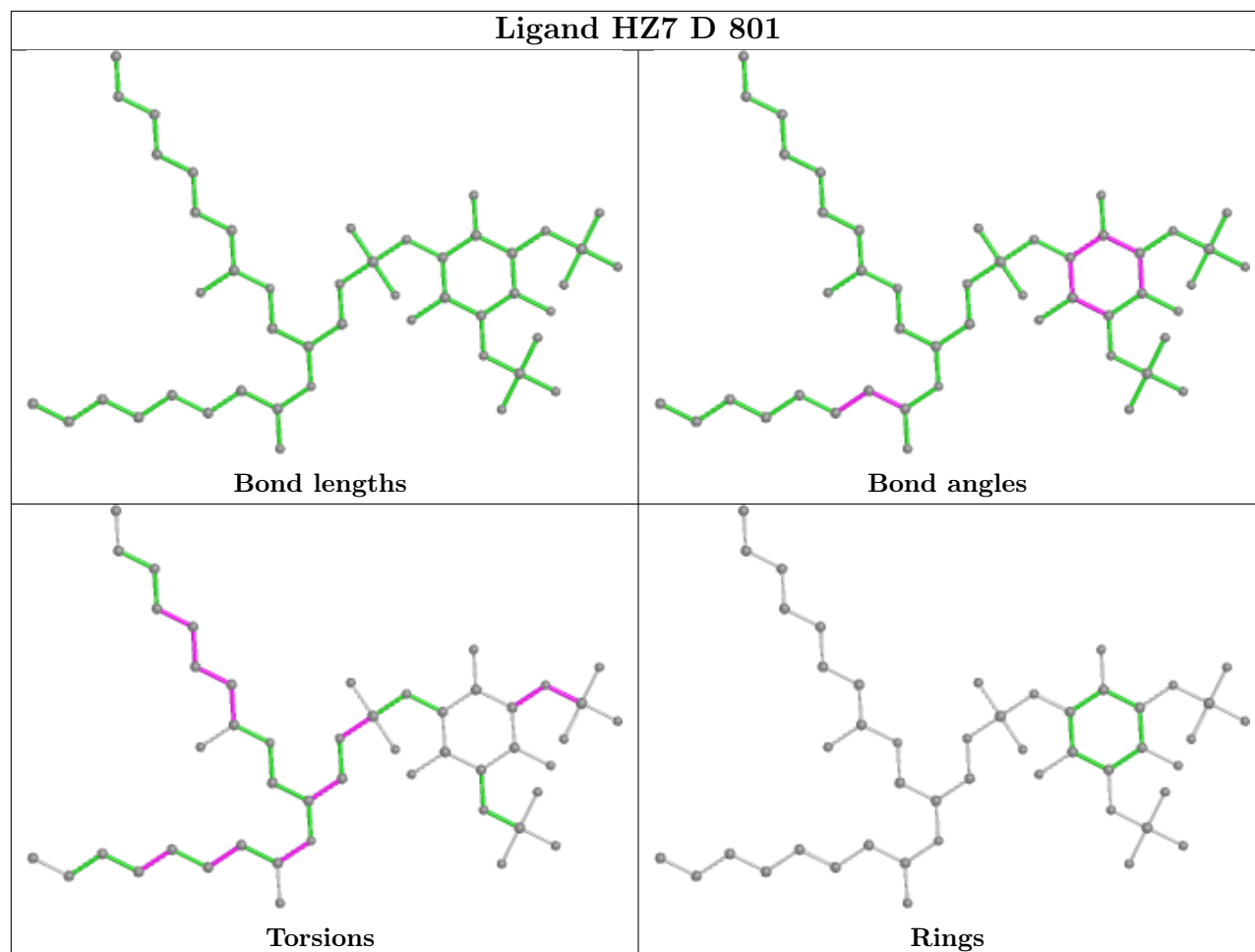
8 monomers are involved in 42 short contacts:

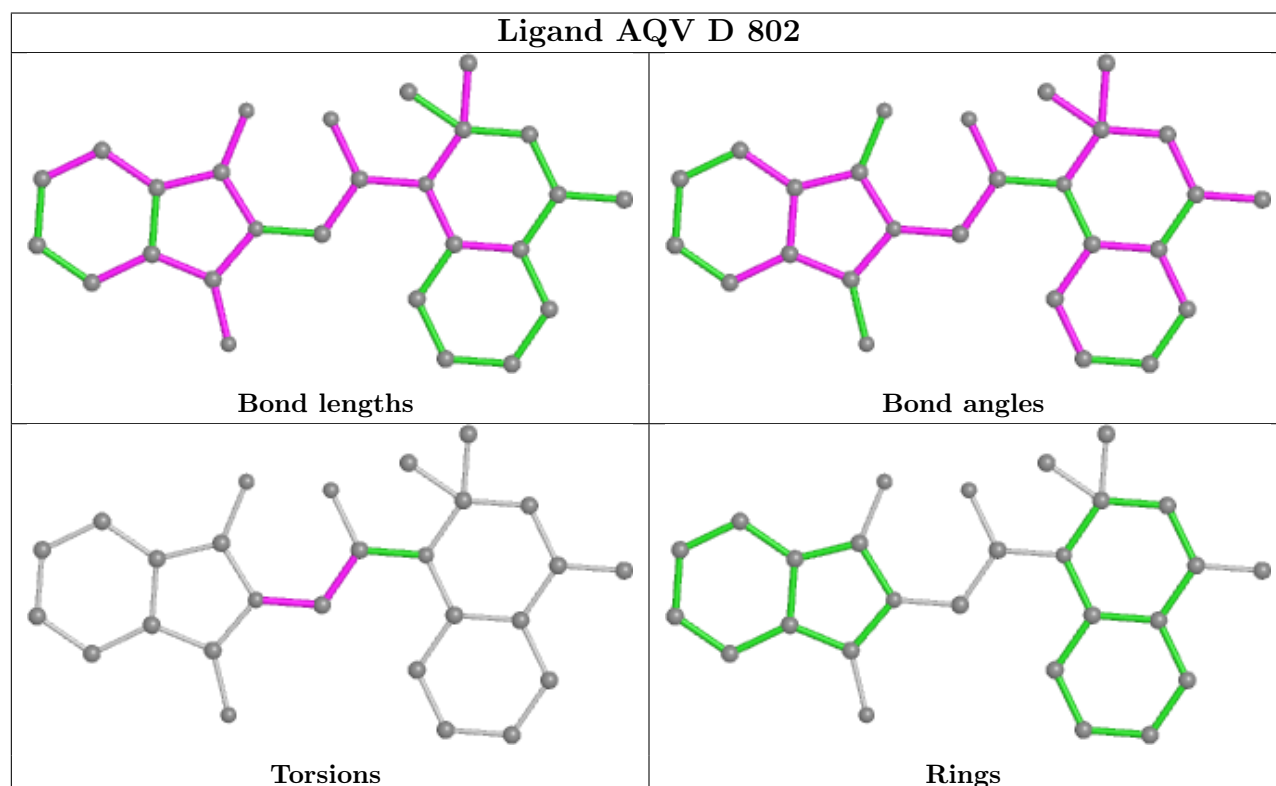
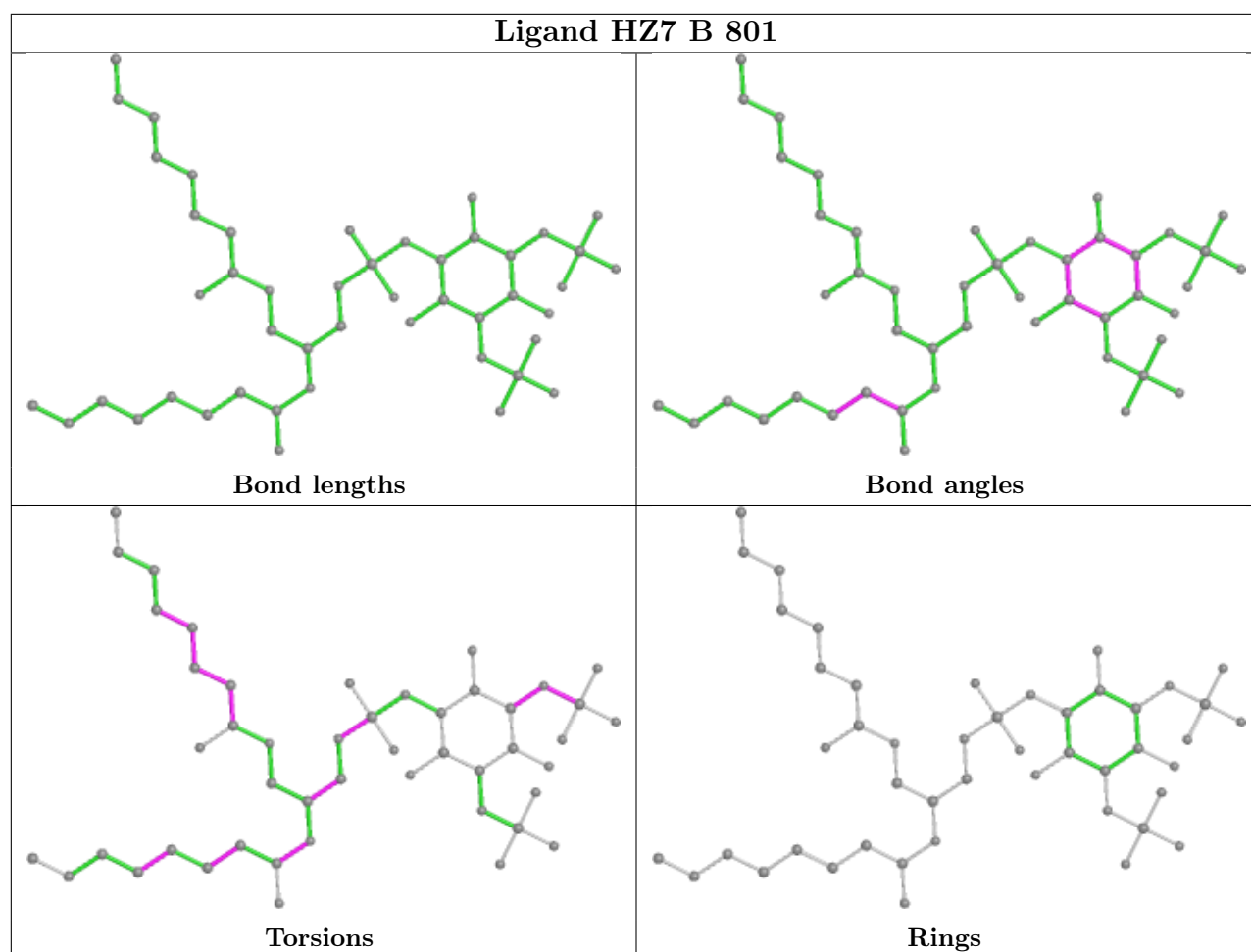
Mol	Chain	Res	Type	Clashes	Symm-Clashes
2	C	801	HZ7	4	0
3	B	802	AQV	6	0
3	C	802	AQV	6	0
2	A	801	HZ7	5	0
2	D	801	HZ7	4	0
2	B	801	HZ7	5	0
3	D	802	AQV	6	0
3	A	802	AQV	6	0

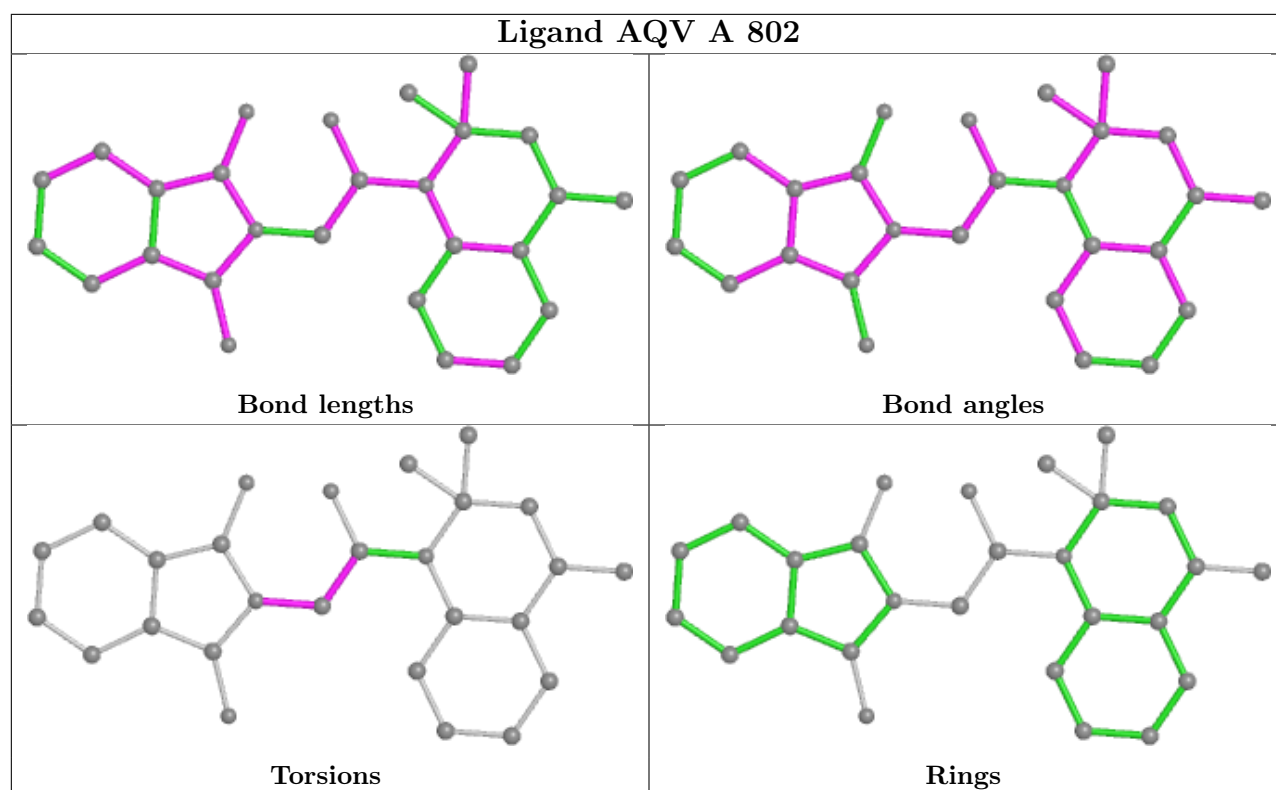
The following is a two-dimensional graphical depiction of Mogul quality analysis of bond lengths, bond angles, torsion angles, and ring geometry for all instances of the Ligand of Interest. In addition, ligands with molecular weight > 250 and outliers as shown on the validation Tables will also be included. For torsion angles, if less than 5% of the Mogul distribution of torsion angles is within 10 degrees of the torsion angle in question, then that torsion angle is considered an outlier. Any bond that is central to one or more torsion angles identified as an outlier by Mogul will be highlighted in the graph. For rings, the root-mean-square deviation (RMSD) between the ring in question and similar rings identified by Mogul is calculated over all ring torsion angles. If the average RMSD is greater than 60 degrees and the minimal RMSD between the ring in question and any Mogul-identified rings is also greater than 60 degrees, then that ring is considered an outlier. The outliers are highlighted in purple. The color gray indicates Mogul did not find sufficient equivalents in the CSD to analyse the geometry.











5.7 Other polymers [i](#)

There are no such residues in this entry.

5.8 Polymer linkage issues [i](#)

There are no chain breaks in this entry.

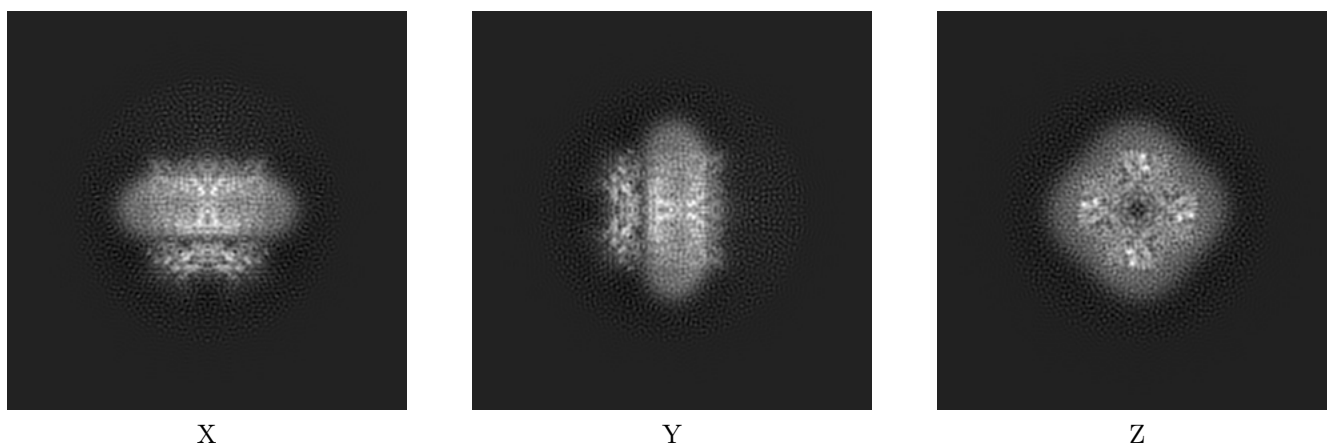
6 Map visualisation [i](#)

This section contains visualisations of the EMDB entry EMD-9002. These allow visual inspection of the internal detail of the map and identification of artifacts.

No raw map or half-maps were deposited for this entry and therefore no images, graphs, etc. pertaining to the raw map can be shown.

6.1 Orthogonal projections [i](#)

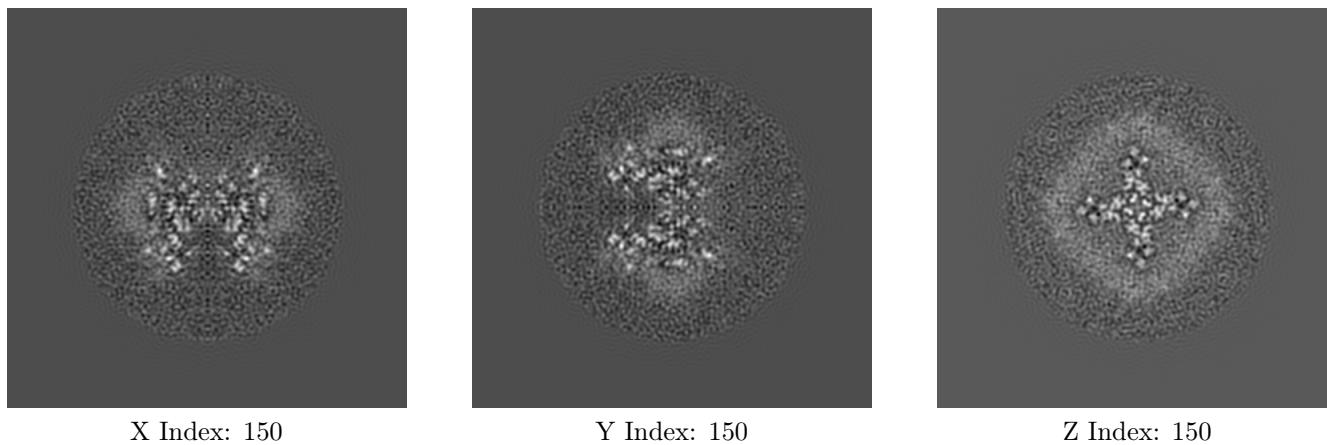
6.1.1 Primary map



The images above show the map projected in three orthogonal directions.

6.2 Central slices [i](#)

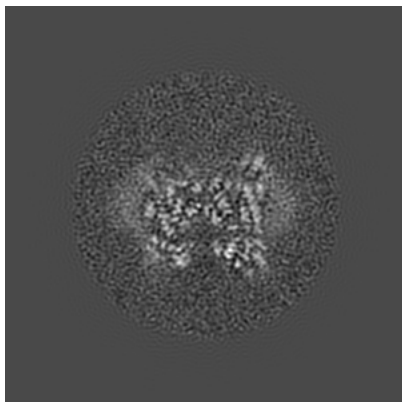
6.2.1 Primary map



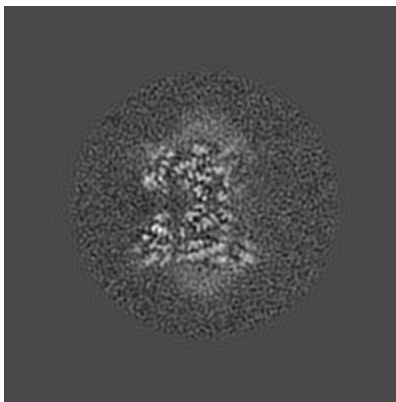
The images above show central slices of the map in three orthogonal directions.

6.3 Largest variance slices [i](#)

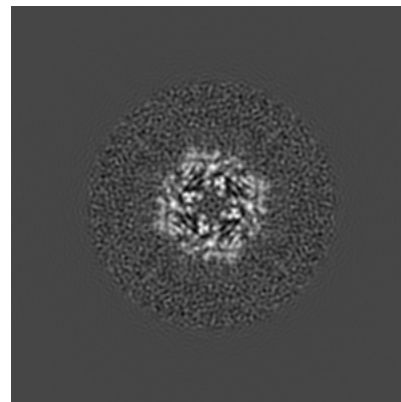
6.3.1 Primary map



X Index: 154



Y Index: 154

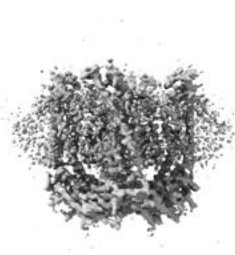


Z Index: 112

The images above show the largest variance slices of the map in three orthogonal directions.

6.4 Orthogonal surface views [i](#)

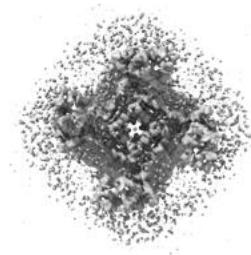
6.4.1 Primary map



X



Y



Z

The images above show the 3D surface view of the map at the recommended contour level 2.98. These images, in conjunction with the slice images, may facilitate assessment of whether an appropriate contour level has been provided.

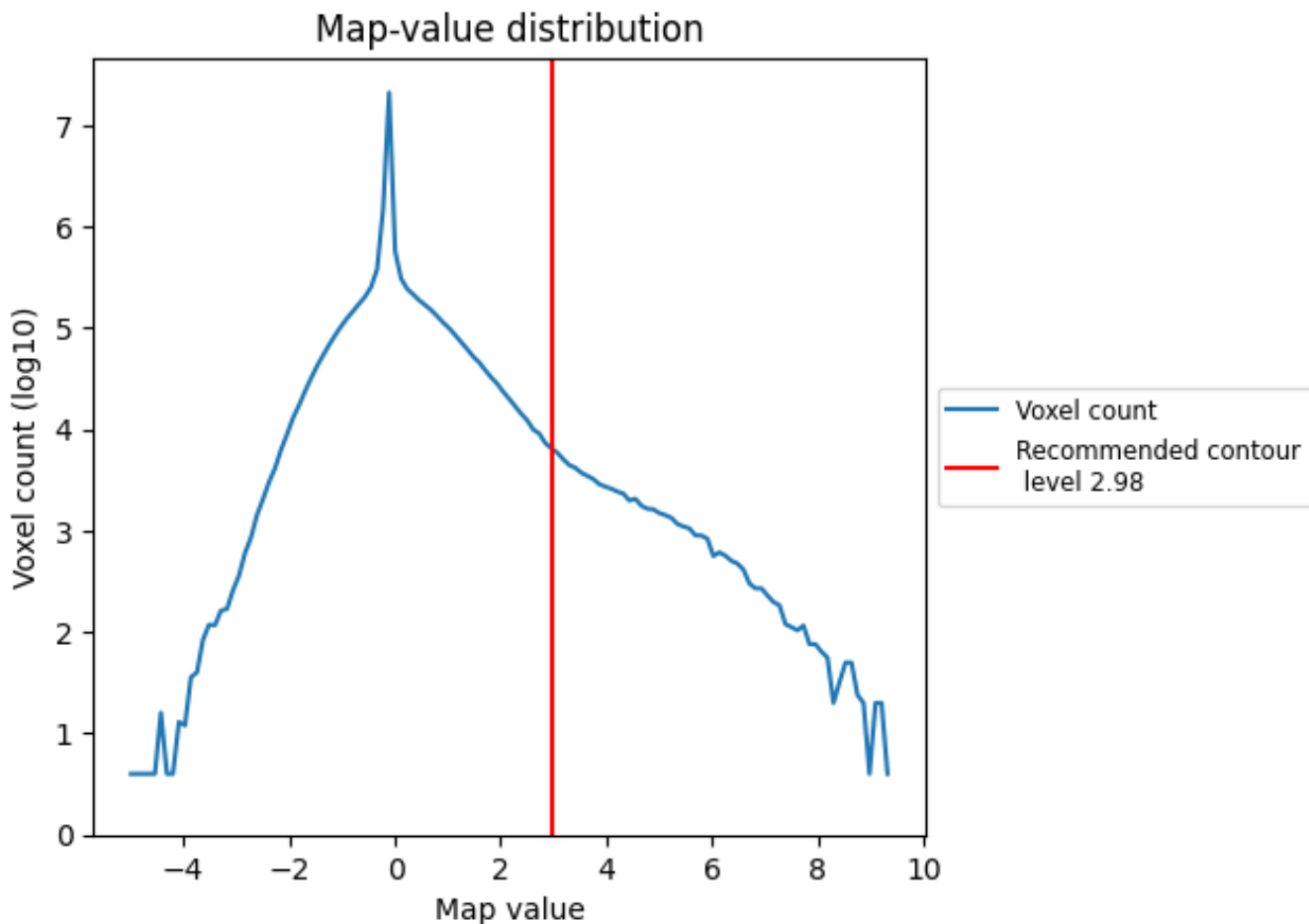
6.5 Mask visualisation

This section was not generated. No masks/segmentation were deposited.

7 Map analysis [i](#)

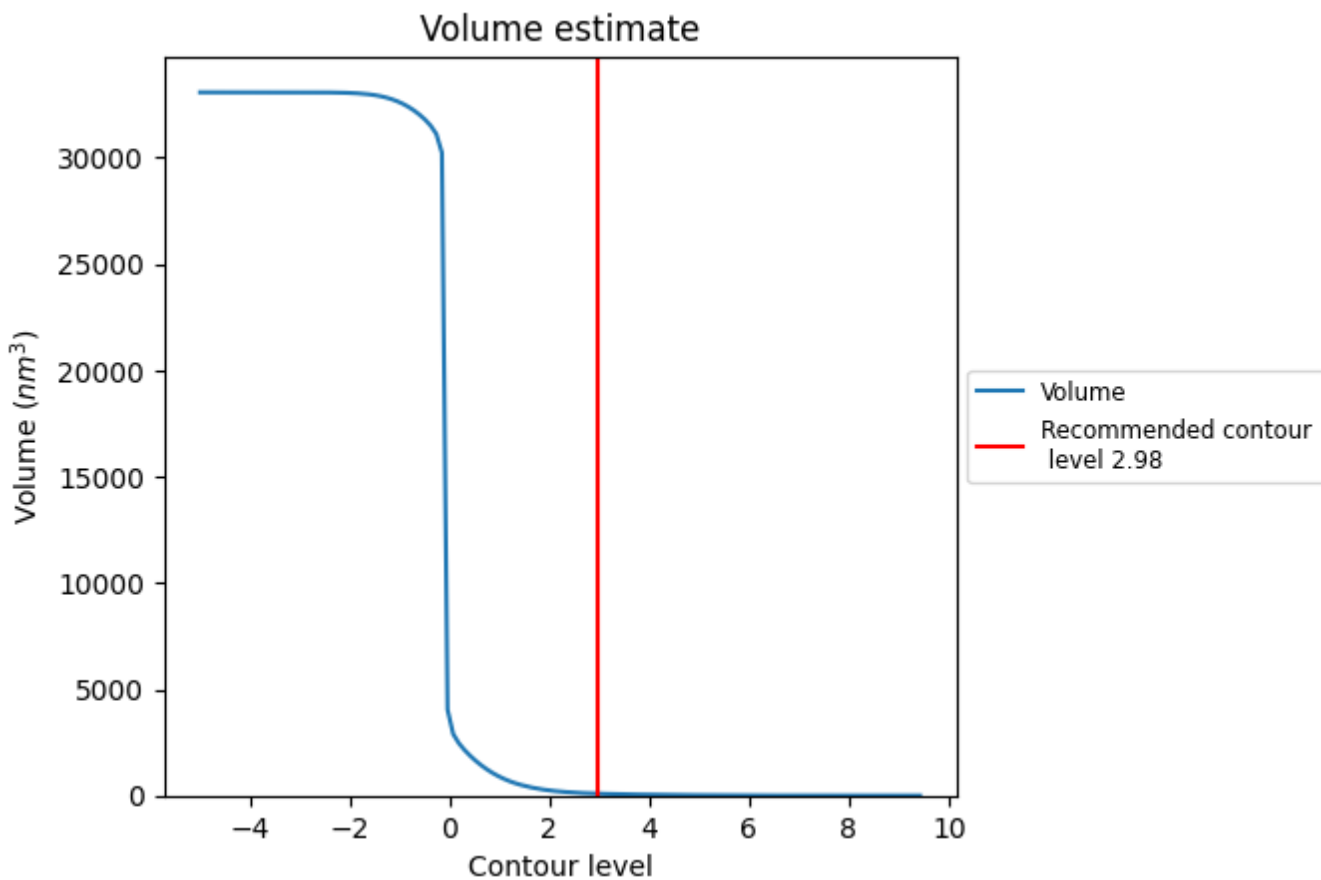
This section contains the results of statistical analysis of the map.

7.1 Map-value distribution [i](#)



The map-value distribution is plotted in 128 intervals along the x-axis. The y-axis is logarithmic. A spike in this graph at zero usually indicates that the volume has been masked.

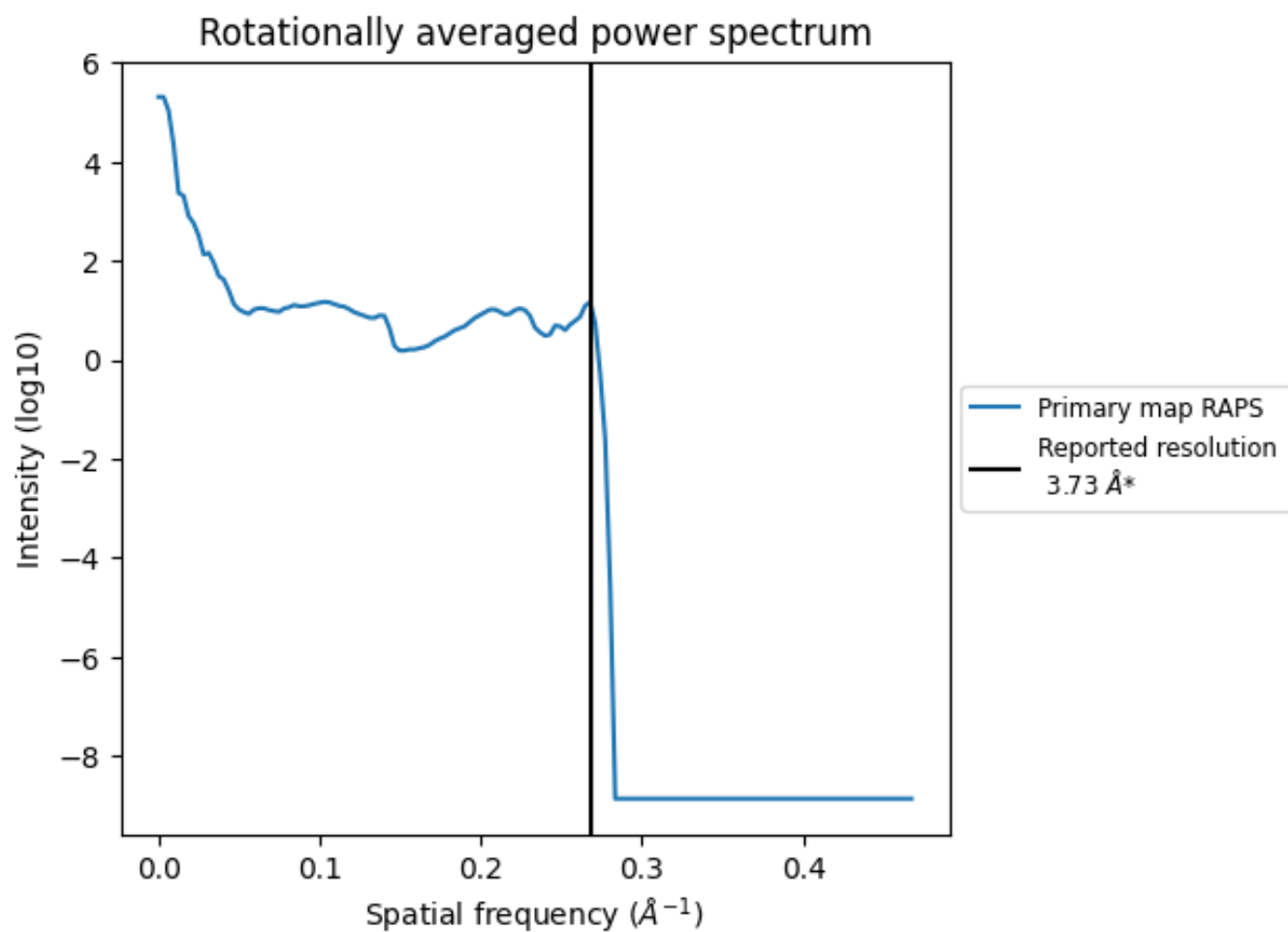
7.2 Volume estimate [i](#)



The volume at the recommended contour level is 89 nm³; this corresponds to an approximate mass of 81 kDa.

The volume estimate graph shows how the enclosed volume varies with the contour level. The recommended contour level is shown as a vertical line and the intersection between the line and the curve gives the volume of the enclosed surface at the given level.

7.3 Rotationally averaged power spectrum [i](#)



*Reported resolution corresponds to spatial frequency of 0.268 Å⁻¹

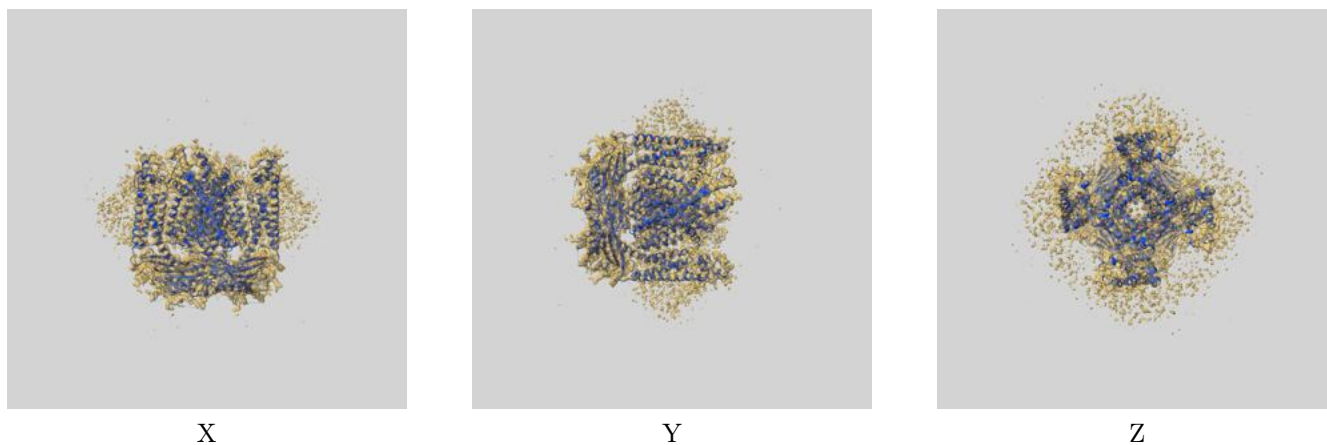
8 Fourier-Shell correlation

This section was not generated. No FSC curve or half-maps provided.

9 Map-model fit [i](#)

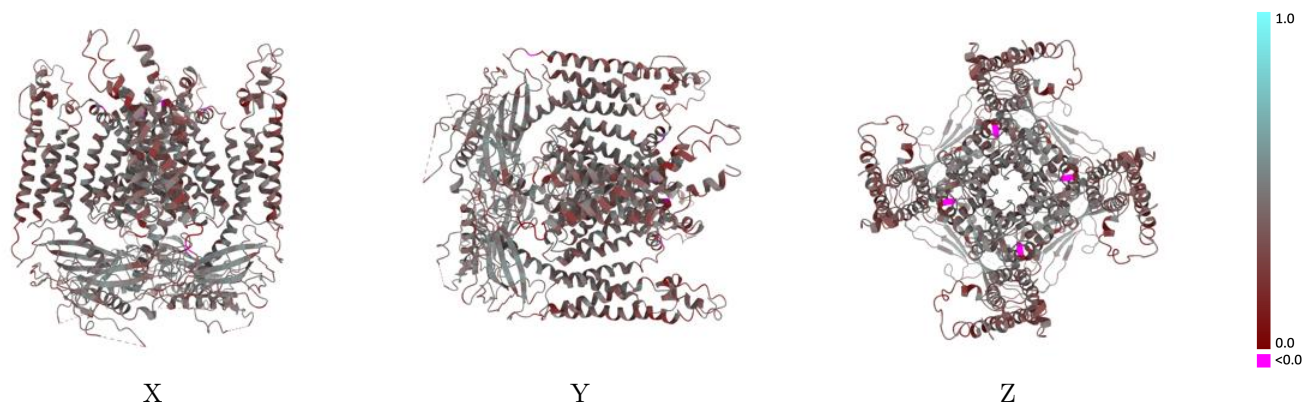
This section contains information regarding the fit between EMDB map EMD-9002 and PDB model 6E7Z. Per-residue inclusion information can be found in section 3 on page 5.

9.1 Map-model overlay [i](#)



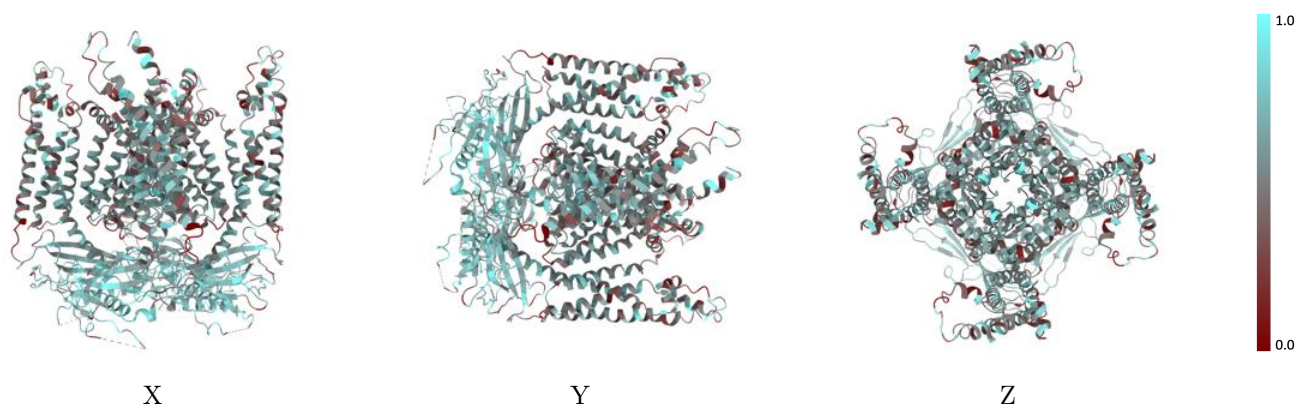
The images above show the 3D surface view of the map at the recommended contour level 2.98 at 50% transparency in yellow overlaid with a ribbon representation of the model coloured in blue. These images allow for the visual assessment of the quality of fit between the atomic model and the map.

9.2 Q-score mapped to coordinate model [\(i\)](#)



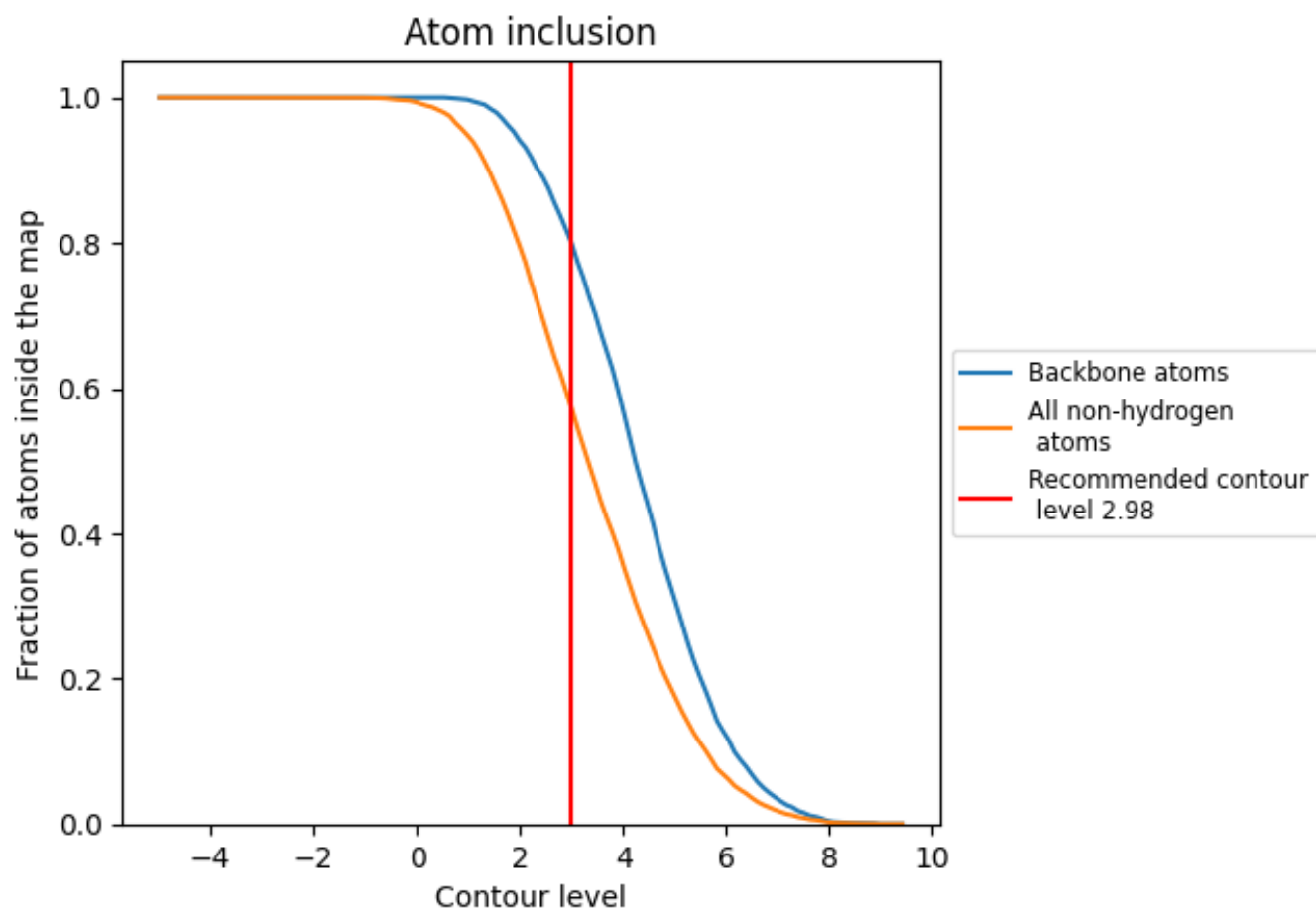
The images above show the model with each residue coloured according to its Q-score. This shows their resolvability in the map with higher Q-score values reflecting better resolvability. Please note: Q-score is calculating the resolvability of atoms, and thus high values are only expected at resolutions at which atoms can be resolved. Low Q-score values may therefore be expected for many entries.

9.3 Atom inclusion mapped to coordinate model [\(i\)](#)



The images above show the model with each residue coloured according to its atom inclusion. This shows to what extent they are inside the map at the recommended contour level (2.98).











9.4 Atom inclusion [i](#)



At the recommended contour level, 80% of all backbone atoms, 58% of all non-hydrogen atoms, are inside the map.

9.5 Map-model fit summary [i](#)

The table lists the average atom inclusion at the recommended contour level (2.98) and Q-score for the entire model and for each chain.

Chain	Atom inclusion	Q-score
All	 0.5767	 0.3920
A	 0.5773	 0.3920
B	 0.5763	 0.3930
C	 0.5760	 0.3930
D	 0.5771	 0.3920

