



# Full wwPDB X-ray Structure Validation Report ⓘ

Oct 8, 2023 – 09:37 AM EDT

PDB ID : 6EAE  
Title : CRYSTAL STRUCTURE OF HUMAN RESPIRATORY SYNCYTIAL VIRUS FUSION GLYCOPROTEIN INHIBITOR ESCAPE VARIANT L141W STABILIZED IN THE PREFUSION STATE  
Authors : Battles, M.B.; McLellan, J.S.  
Deposited on : 2018-08-03  
Resolution : 2.90 Å(reported)

This is a Full wwPDB X-ray Structure Validation Report for a publicly released PDB entry.

We welcome your comments at [validation@mail.wwpdb.org](mailto:validation@mail.wwpdb.org)

A user guide is available at

<https://www.wwpdb.org/validation/2017/XrayValidationReportHelp>

with specific help available everywhere you see the ⓘ symbol.

The types of validation reports are described at

<http://www.wwpdb.org/validation/2017/FAQs#types>.

---

The following versions of software and data (see [references ⓘ](#)) were used in the production of this report:

MolProbity : 4.02b-467  
Mogul : 1.8.5 (274361), CSD as541be (2020)  
Xtriage (Phenix) : 1.13  
EDS : 2.35.1  
Percentile statistics : 20191225.v01 (using entries in the PDB archive December 25th 2019)  
Refmac : 5.8.0158  
CCP4 : 7.0.044 (Gargrove)  
Ideal geometry (proteins) : Engh & Huber (2001)  
Ideal geometry (DNA, RNA) : Parkinson et al. (1996)  
Validation Pipeline (wwPDB-VP) : 2.35.1

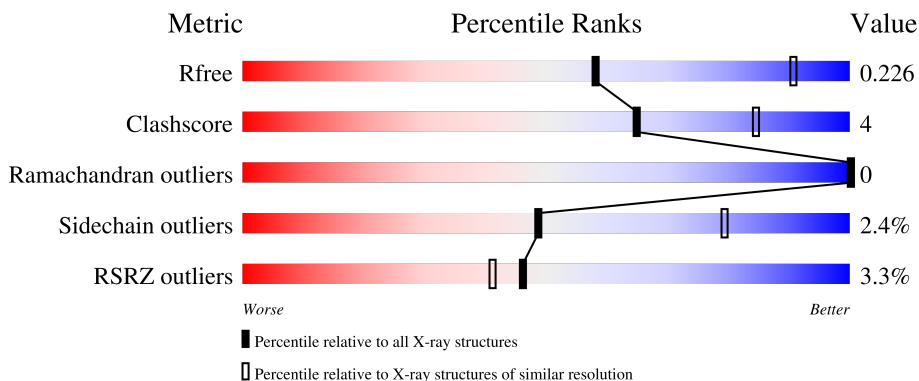
# 1 Overall quality at a glance

The following experimental techniques were used to determine the structure:

*X-RAY DIFFRACTION*

The reported resolution of this entry is 2.90 Å.

Percentile scores (ranging between 0-100) for global validation metrics of the entry are shown in the following graphic. The table shows the number of entries on which the scores are based.



Metric	Whole archive (#Entries)	Similar resolution (#Entries, resolution range(Å))
$R_{free}$	130704	1957 (2.90-2.90)
Clashscore	141614	2172 (2.90-2.90)
Ramachandran outliers	138981	2115 (2.90-2.90)
Sidechain outliers	138945	2117 (2.90-2.90)
RSRZ outliers	127900	1906 (2.90-2.90)

The table below summarises the geometric issues observed across the polymeric chains and their fit to the electron density. The red, orange, yellow and green segments of the lower bar indicate the fraction of residues that contain outliers for  $\geq 3$ , 2, 1 and 0 types of geometric quality criteria respectively. A grey segment represents the fraction of residues that are not modelled. The numeric value for each fraction is indicated below the corresponding segment, with a dot representing fractions  $\leq 5\%$ . The upper red bar (where present) indicates the fraction of residues that have poor fit to the electron density. The numeric value is given above the bar.

Mol	Chain	Length	Quality of chain
1	F	573	

## 2 Entry composition [i](#)

There are 3 unique types of molecules in this entry. The entry contains 3539 atoms, of which 0 are hydrogens and 0 are deuteriums.

In the tables below, the ZeroOcc column contains the number of atoms modelled with zero occupancy, the AltConf column contains the number of residues with at least one atom in alternate conformation and the Trace column contains the number of residues modelled with at most 2 atoms.

- Molecule 1 is a protein called Fusion glycoprotein F0.

Mol	Chain	Residues	Atoms					ZeroOcc	AltConf	Trace
			Total	C	N	O	S			
1	F	451	3488	2204	576	687	21	0	0	0

There are 64 discrepancies between the modelled and reference sequences:

Chain	Residue	Modelled	Actual	Comment	Reference
F	66	GLU	LYS	conflict	UNP W8RJF9
F	67	ILE	ASN	engineered mutation	UNP W8RJF9
F	141	TRP	LEU	engineered mutation	UNP W8RJF9
F	215	PRO	SER	engineered mutation	UNP W8RJF9
F	514	SER	-	expression tag	UNP W8RJF9
F	515	ALA	-	expression tag	UNP W8RJF9
F	516	ILE	-	expression tag	UNP W8RJF9
F	517	GLY	-	expression tag	UNP W8RJF9
F	518	GLY	-	expression tag	UNP W8RJF9
F	519	TYR	-	expression tag	UNP W8RJF9
F	520	ILE	-	expression tag	UNP W8RJF9
F	521	PRO	-	expression tag	UNP W8RJF9
F	522	GLU	-	expression tag	UNP W8RJF9
F	523	ALA	-	expression tag	UNP W8RJF9
F	524	PRO	-	expression tag	UNP W8RJF9
F	525	ARG	-	expression tag	UNP W8RJF9
F	526	ASP	-	expression tag	UNP W8RJF9
F	527	GLY	-	expression tag	UNP W8RJF9
F	528	GLN	-	expression tag	UNP W8RJF9
F	529	ALA	-	expression tag	UNP W8RJF9
F	530	TYR	-	expression tag	UNP W8RJF9
F	531	VAL	-	expression tag	UNP W8RJF9
F	532	ARG	-	expression tag	UNP W8RJF9
F	533	LYS	-	expression tag	UNP W8RJF9
F	534	ASP	-	expression tag	UNP W8RJF9
F	535	GLY	-	expression tag	UNP W8RJF9
F	536	GLU	-	expression tag	UNP W8RJF9

*Continued on next page...*

*Continued from previous page...*

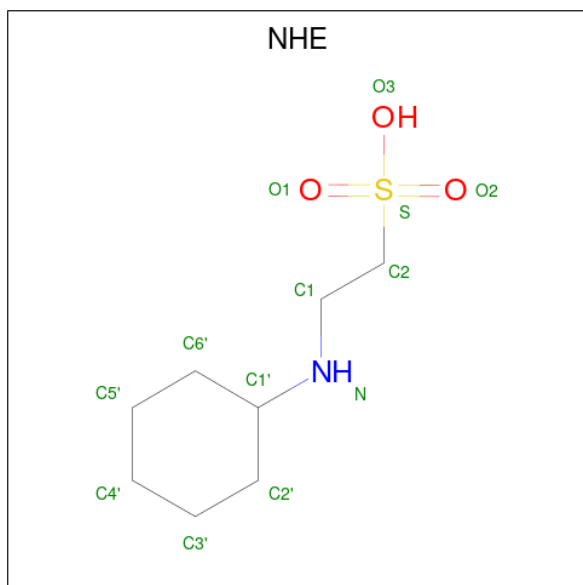
Chain	Residue	Modelled	Actual	Comment	Reference
F	537	TRP	-	expression tag	UNP W8RJF9
F	538	VAL	-	expression tag	UNP W8RJF9
F	539	LEU	-	expression tag	UNP W8RJF9
F	540	LEU	-	expression tag	UNP W8RJF9
F	541	SER	-	expression tag	UNP W8RJF9
F	542	THR	-	expression tag	UNP W8RJF9
F	543	PHE	-	expression tag	UNP W8RJF9
F	544	LEU	-	expression tag	UNP W8RJF9
F	545	GLY	-	expression tag	UNP W8RJF9
F	546	SER	-	expression tag	UNP W8RJF9
F	547	LEU	-	expression tag	UNP W8RJF9
F	548	GLU	-	expression tag	UNP W8RJF9
F	549	VAL	-	expression tag	UNP W8RJF9
F	550	LEU	-	expression tag	UNP W8RJF9
F	551	PHE	-	expression tag	UNP W8RJF9
F	552	GLN	-	expression tag	UNP W8RJF9
F	553	GLY	-	expression tag	UNP W8RJF9
F	554	PRO	-	expression tag	UNP W8RJF9
F	555	GLY	-	expression tag	UNP W8RJF9
F	556	HIS	-	expression tag	UNP W8RJF9
F	557	HIS	-	expression tag	UNP W8RJF9
F	558	HIS	-	expression tag	UNP W8RJF9
F	559	HIS	-	expression tag	UNP W8RJF9
F	560	HIS	-	expression tag	UNP W8RJF9
F	561	HIS	-	expression tag	UNP W8RJF9
F	562	HIS	-	expression tag	UNP W8RJF9
F	563	HIS	-	expression tag	UNP W8RJF9
F	564	SER	-	expression tag	UNP W8RJF9
F	565	ALA	-	expression tag	UNP W8RJF9
F	566	TRP	-	expression tag	UNP W8RJF9
F	567	SER	-	expression tag	UNP W8RJF9
F	568	HIS	-	expression tag	UNP W8RJF9
F	569	PRO	-	expression tag	UNP W8RJF9
F	570	GLN	-	expression tag	UNP W8RJF9
F	571	PHE	-	expression tag	UNP W8RJF9
F	572	GLU	-	expression tag	UNP W8RJF9
F	573	LYS	-	expression tag	UNP W8RJF9

- Molecule 2 is SULFATE ION (three-letter code: SO4) (formula: O<sub>4</sub>S).



Mol	Chain	Residues	Atoms			ZeroOcc	AltConf
2	F	1	Total	O	S	0	0
			5	4	1		
2	F	1	Total	O	S	0	0
			5	4	1		
2	F	1	Total	O	S	0	0
			5	4	1		
2	F	1	Total	O	S	0	0
			5	4	1		

- Molecule 3 is 2-[N-CYCLOHEXYLAMINO]ETHANE SULFONIC ACID (three-letter code: NHE) (formula: C<sub>8</sub>H<sub>17</sub>NO<sub>3</sub>S).

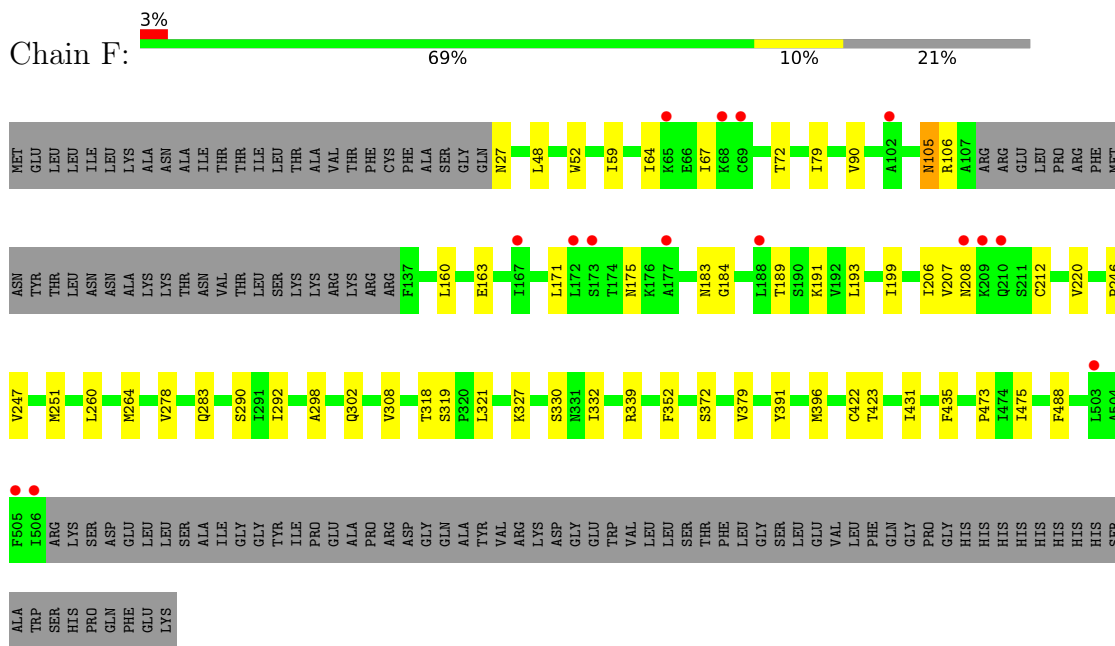


Mol	Chain	Residues	Atoms					ZeroOcc	AltConf
			Total	C	N	O	S		
3	F	1	Total	8	1	3	1	0	0
3	F	1	Total	8	1	3	1	0	0

### 3 Residue-property plots [i](#)

These plots are drawn for all protein, RNA, DNA and oligosaccharide chains in the entry. The first graphic for a chain summarises the proportions of the various outlier classes displayed in the second graphic. The second graphic shows the sequence view annotated by issues in geometry and electron density. Residues are color-coded according to the number of geometric quality criteria for which they contain at least one outlier: green = 0, yellow = 1, orange = 2 and red = 3 or more. A red dot above a residue indicates a poor fit to the electron density ( $RSRZ > 2$ ). Stretches of 2 or more consecutive residues without any outlier are shown as a green connector. Residues present in the sample, but not in the model, are shown in grey.

- Molecule 1: Fusion glycoprotein F0



## 4 Data and refinement statistics

Property	Value	Source
Space group	P 41 3 2	Depositor
Cell constants a, b, c, $\alpha$ , $\beta$ , $\gamma$	167.19Å 167.19Å 167.19Å 90.00° 90.00° 90.00°	Depositor
Resolution (Å)	46.37 – 2.90 46.37 – 2.90	Depositor EDS
% Data completeness (in resolution range)	100.0 (46.37-2.90) 100.0 (46.37-2.90)	Depositor EDS
$R_{merge}$	0.16	Depositor
$R_{sym}$	(Not available)	Depositor
$\langle I/\sigma(I) \rangle$ <sup>1</sup>	1.60 (at 2.91Å)	Xtrriage
Refinement program	PHENIX 1.13_2998	Depositor
R, $R_{free}$	0.199 , 0.226 0.199 , 0.226	Depositor DCC
$R_{free}$ test set	885 reflections (4.84%)	wwPDB-VP
Wilson B-factor (Å <sup>2</sup> )	78.8	Xtrriage
Anisotropy	0.000	Xtrriage
Bulk solvent $k_{sol}$ (e/Å <sup>3</sup> ), $B_{sol}$ (Å <sup>2</sup> )	0.32 , 49.7	EDS
L-test for twinning <sup>2</sup>	$\langle  L  \rangle = 0.49$ , $\langle L^2 \rangle = 0.33$	Xtrriage
Estimated twinning fraction	No twinning to report.	Xtrriage
$F_o, F_c$ correlation	0.95	EDS
Total number of atoms	3539	wwPDB-VP
Average B, all atoms (Å <sup>2</sup> )	88.0	wwPDB-VP

Xtrriage's analysis on translational NCS is as follows: *The largest off-origin peak in the Patterson function is 2.80% of the height of the origin peak. No significant pseudotranslation is detected.*

<sup>1</sup>Intensities estimated from amplitudes.

<sup>2</sup>Theoretical values of  $\langle |L| \rangle$ ,  $\langle L^2 \rangle$  for acentric reflections are 0.5, 0.333 respectively for untwinned datasets, and 0.375, 0.2 for perfectly twinned datasets.



## 5 Model quality [i](#)

### 5.1 Standard geometry [i](#)

Bond lengths and bond angles in the following residue types are not validated in this section: NHE, SO4

The Z score for a bond length (or angle) is the number of standard deviations the observed value is removed from the expected value. A bond length (or angle) with  $|Z| > 5$  is considered an outlier worth inspection. RMSZ is the root-mean-square of all Z scores of the bond lengths (or angles).

Mol	Chain	Bond lengths		Bond angles	
		RMSZ	# Z  >5	RMSZ	# Z  >5
1	F	0.32	0/3541	0.49	0/4803

There are no bond length outliers.

There are no bond angle outliers.

There are no chirality outliers.

There are no planarity outliers.

### 5.2 Too-close contacts [i](#)

In the following table, the Non-H and H(model) columns list the number of non-hydrogen atoms and hydrogen atoms in the chain respectively. The H(added) column lists the number of hydrogen atoms added and optimized by MolProbity. The Clashes column lists the number of clashes within the asymmetric unit, whereas Symm-Clashes lists symmetry-related clashes.

Mol	Chain	Non-H	H(model)	H(added)	Clashes	Symm-Clashes
1	F	3488	0	3526	29	0
2	F	25	0	0	0	0
3	F	26	0	34	0	0
All	All	3539	0	3560	29	0

The all-atom clashscore is defined as the number of clashes found per 1000 atoms (including hydrogen atoms). The all-atom clashscore for this structure is 4.

All (29) close contacts within the same asymmetric unit are listed below, sorted by their clash magnitude.

Atom-1	Atom-2	Interatomic distance (Å)	Clash overlap (Å)
1:F:246:PRO:HB3	1:F:283:GLN:HA	1.68	0.74

*Continued on next page...*

Continued from previous page...

Atom-1	Atom-2	Interatomic distance (Å)	Clash overlap (Å)
1:F:90:VAL:HG13	1:F:292:ILE:HD11	1.87	0.57
1:F:321:LEU:HD11	1:F:473:PRO:HB3	1.86	0.56
1:F:171:LEU:HD13	1:F:191:LYS:HB2	1.89	0.53
1:F:79:ILE:HD11	1:F:220:VAL:HA	1.91	0.53
1:F:59:ILE:HG23	1:F:193:LEU:HB3	1.94	0.49
1:F:318:THR:OG1	1:F:339:ARG:HD3	2.13	0.48
1:F:64:ILE:HD11	1:F:199:ILE:HG21	1.96	0.47
1:F:352:PHE:CE1	1:F:372:SER:HB3	2.49	0.47
1:F:175:ASN:OD1	1:F:175:ASN:N	2.46	0.47
1:F:160:LEU:HG	1:F:163:GLU:HB2	1.98	0.45
1:F:318:THR:HG23	1:F:339:ARG:HB3	1.98	0.44
1:F:260:LEU:O	1:F:264:MET:HG3	2.18	0.44
1:F:332:ILE:HG13	1:F:475:ILE:HD11	2.00	0.43
1:F:290:SER:HB3	1:F:298:ALA:O	2.18	0.43
1:F:327:LYS:HB3	1:F:330:SER:OG	2.18	0.43
1:F:207:VAL:O	1:F:208:ASN:HB2	2.18	0.43
1:F:423:THR:HG21	1:F:431:ILE:HD13	2.01	0.43
1:F:207:VAL:HG12	1:F:208:ASN:H	1.84	0.42
1:F:105:ASN:OD1	1:F:105:ASN:N	2.52	0.42
1:F:247:VAL:HG13	1:F:251:MET:HB2	2.02	0.42
1:F:67:ILE:HA	1:F:207:VAL:HG13	2.02	0.42
1:F:379:VAL:HG23	1:F:391:TYR:CE2	2.56	0.41
1:F:183:ASN:OD1	1:F:184:GLY:N	2.54	0.41
1:F:52:TRP:CE3	1:F:302:GLN:HG2	2.56	0.41
1:F:422:CYS:HB2	1:F:435:PHE:HB2	2.03	0.41
1:F:171:LEU:HD11	1:F:189:THR:HG22	2.03	0.41
1:F:48:LEU:HB2	1:F:308:VAL:HB	2.03	0.40
1:F:207:VAL:HG12	1:F:208:ASN:N	2.36	0.40

There are no symmetry-related clashes.

## 5.3 Torsion angles [\(i\)](#)

### 5.3.1 Protein backbone [\(i\)](#)

In the following table, the Percentiles column shows the percent Ramachandran outliers of the chain as a percentile score with respect to all X-ray entries followed by that with respect to entries of similar resolution.

The Analysed column shows the number of residues for which the backbone conformation was analysed, and the total number of residues.

Mol	Chain	Analysed	Favoured	Allowed	Outliers	Percentiles	
1	F	447/573 (78%)	424 (95%)	23 (5%)	0	100	100

There are no Ramachandran outliers to report.

### 5.3.2 Protein sidechains [i](#)

In the following table, the Percentiles column shows the percent sidechain outliers of the chain as a percentile score with respect to all X-ray entries followed by that with respect to entries of similar resolution.

The Analysed column shows the number of residues for which the sidechain conformation was analysed, and the total number of residues.

Mol	Chain	Analysed	Rotameric	Outliers	Percentiles	
1	F	410/515 (80%)	400 (98%)	10 (2%)	49	79

All (10) residues with a non-rotameric sidechain are listed below:

Mol	Chain	Res	Type
1	F	27	ASN
1	F	72	THR
1	F	105	ASN
1	F	106	ARG
1	F	206	ILE
1	F	212	CYS
1	F	278	VAL
1	F	319	SER
1	F	396	MET
1	F	488	PHE

Sometimes sidechains can be flipped to improve hydrogen bonding and reduce clashes. There are no such sidechains identified.

### 5.3.3 RNA [i](#)

There are no RNA molecules in this entry.

## 5.4 Non-standard residues in protein, DNA, RNA chains [i](#)

There are no non-standard protein/DNA/RNA residues in this entry.

## 5.5 Carbohydrates [i](#)

There are no monosaccharides in this entry.

## 5.6 Ligand geometry [i](#)

7 ligands are modelled in this entry.

In the following table, the Counts columns list the number of bonds (or angles) for which Mogul statistics could be retrieved, the number of bonds (or angles) that are observed in the model and the number of bonds (or angles) that are defined in the Chemical Component Dictionary. The Link column lists molecule types, if any, to which the group is linked. The Z score for a bond length (or angle) is the number of standard deviations the observed value is removed from the expected value. A bond length (or angle) with  $|Z| > 2$  is considered an outlier worth inspection. RMSZ is the root-mean-square of all Z scores of the bond lengths (or angles).

Mol	Type	Chain	Res	Link	Bond lengths			Bond angles		
					Counts	RMSZ	# Z  > 2	Counts	RMSZ	# Z  > 2
2	SO4	F	605	-	4,4,4	0.13	0	6,6,6	0.15	0
3	NHE	F	607	-	13,13,13	1.37	2 (15%)	16,17,17	1.87	3 (18%)
3	NHE	F	606	-	13,13,13	1.42	2 (15%)	16,17,17	2.04	3 (18%)
2	SO4	F	601	-	4,4,4	0.22	0	6,6,6	0.22	0
2	SO4	F	604	-	4,4,4	0.15	0	6,6,6	0.06	0
2	SO4	F	602	-	4,4,4	0.14	0	6,6,6	0.08	0
2	SO4	F	603	-	4,4,4	0.13	0	6,6,6	0.12	0

In the following table, the Chirals column lists the number of chiral outliers, the number of chiral centers analysed, the number of these observed in the model and the number defined in the Chemical Component Dictionary. Similar counts are reported in the Torsion and Rings columns. '2' means no outliers of that kind were identified.

Mol	Type	Chain	Res	Link	Chirals	Torsions	Rings
3	NHE	F	607	-	-	1/7/15/15	0/1/1/1
3	NHE	F	606	-	-	2/7/15/15	0/1/1/1

All (4) bond length outliers are listed below:

Mol	Chain	Res	Type	Atoms	Z	Observed(Å)	Ideal(Å)
3	F	606	NHE	C2-S	2.86	1.81	1.77
3	F	607	NHE	C2-S	2.77	1.81	1.77
3	F	606	NHE	O2-S	2.54	1.52	1.45
3	F	607	NHE	O2-S	2.11	1.51	1.45

All (6) bond angle outliers are listed below:

Mol	Chain	Res	Type	Atoms	Z	Observed(°)	Ideal(°)
3	F	606	NHE	O3-S-O1	-4.70	99.80	111.27
3	F	606	NHE	O3-S-C2	4.29	112.70	105.77
3	F	607	NHE	O1-S-C2	4.15	111.92	106.92
3	F	606	NHE	O1-S-C2	4.12	111.87	106.92
3	F	607	NHE	O2-S-C2	3.60	111.25	106.92
3	F	607	NHE	O2-S-O1	-3.59	101.54	113.95

There are no chirality outliers.

All (3) torsion outliers are listed below:

Mol	Chain	Res	Type	Atoms
3	F	606	NHE	C1-C2-S-O3
3	F	607	NHE	C2-C1-N-C1'
3	F	606	NHE	C2-C1-N-C1'

There are no ring outliers.

No monomer is involved in short contacts.

## 5.7 Other polymers [i](#)

There are no such residues in this entry.

## 5.8 Polymer linkage issues [i](#)

There are no chain breaks in this entry.

## 6 Fit of model and data [i](#)

### 6.1 Protein, DNA and RNA chains [i](#)

In the following table, the column labelled ‘#RSRZ> 2’ contains the number (and percentage) of RSRZ outliers, followed by percent RSRZ outliers for the chain as percentile scores relative to all X-ray entries and entries of similar resolution. The OWAB column contains the minimum, median, 95<sup>th</sup> percentile and maximum values of the occupancy-weighted average B-factor per residue. The column labelled ‘Q< 0.9’ lists the number of (and percentage) of residues with an average occupancy less than 0.9.

Mol	Chain	Analysed	<RSRZ>	#RSRZ>2	OWAB(Å <sup>2</sup> )	Q<0.9
1	F	451/573 (78%)	-0.02	15 (3%) 46 41	41, 79, 162, 208	0

All (15) RSRZ outliers are listed below:

Mol	Chain	Res	Type	RSRZ
1	F	505	PHE	4.3
1	F	506	ILE	4.1
1	F	173	SER	3.5
1	F	208	ASN	3.4
1	F	65	LYS	3.3
1	F	167	ILE	3.2
1	F	210	GLN	3.2
1	F	172	LEU	2.8
1	F	188	LEU	2.7
1	F	68	LYS	2.5
1	F	503	LEU	2.5
1	F	209	LYS	2.3
1	F	177	ALA	2.3
1	F	102	ALA	2.2
1	F	69	CYS	2.0

### 6.2 Non-standard residues in protein, DNA, RNA chains [i](#)

There are no non-standard protein/DNA/RNA residues in this entry.

### 6.3 Carbohydrates [i](#)

There are no monosaccharides in this entry.

## 6.4 Ligands [i](#)

In the following table, the Atoms column lists the number of modelled atoms in the group and the number defined in the chemical component dictionary. The B-factors column lists the minimum, median, 95<sup>th</sup> percentile and maximum values of B factors of atoms in the group. The column labelled 'Q< 0.9' lists the number of atoms with occupancy less than 0.9.

Mol	Type	Chain	Res	Atoms	RSCC	RSR	B-factors(Å <sup>2</sup> )	Q<0.9
2	SO4	F	604	5/5	0.81	0.39	185,185,186,186	0
2	SO4	F	605	5/5	0.86	0.23	137,138,139,141	0
2	SO4	F	603	5/5	0.89	0.24	135,136,137,137	0
3	NHE	F	607	13/13	0.91	0.38	101,103,108,109	0
3	NHE	F	606	13/13	0.96	0.22	63,70,84,87	0
2	SO4	F	602	5/5	0.97	0.22	135,136,136,137	0
2	SO4	F	601	5/5	0.99	0.20	77,77,77,77	0

## 6.5 Other polymers [i](#)

There are no such residues in this entry.