



wwPDB X-ray Structure Validation Summary Report ⓘ

Jun 22, 2024 – 01:40 PM EDT

PDB ID : 5EBK
Title : Trypanothione reductase in complex with 6-(sec-butoxy)-2-((3-chlorophenyl)thio)pyrimidin-4-amine
Authors : Ilari, A.; Angiulli, G.
Deposited on : 2015-10-19
Resolution : 3.51 Å(reported)

This is a wwPDB X-ray Structure Validation Summary Report for a publicly released PDB entry.

We welcome your comments at validation@mail.wwpdb.org

A user guide is available at

<https://www.wwpdb.org/validation/2017/XrayValidationReportHelp>

with specific help available everywhere you see the ⓘ symbol.

The types of validation reports are described at

<http://www.wwpdb.org/validation/2017/FAQs#types>.

The following versions of software and data (see [references ⓘ](#)) were used in the production of this report:

MolProbity : 4.02b-467
Mogul : 1.8.5 (274361), CSD as541be (2020)
Xtriage (Phenix) : 1.13
EDS : 2.37.1
buster-report : 1.1.7 (2018)
Percentile statistics : 20191225.v01 (using entries in the PDB archive December 25th 2019)
Refmac : 5.8.0158
CCP4 : 7.0.044 (Gargrove)
Ideal geometry (proteins) : Engh & Huber (2001)
Ideal geometry (DNA, RNA) : Parkinson et al. (1996)
Validation Pipeline (wwPDB-VP) : 2.37.1

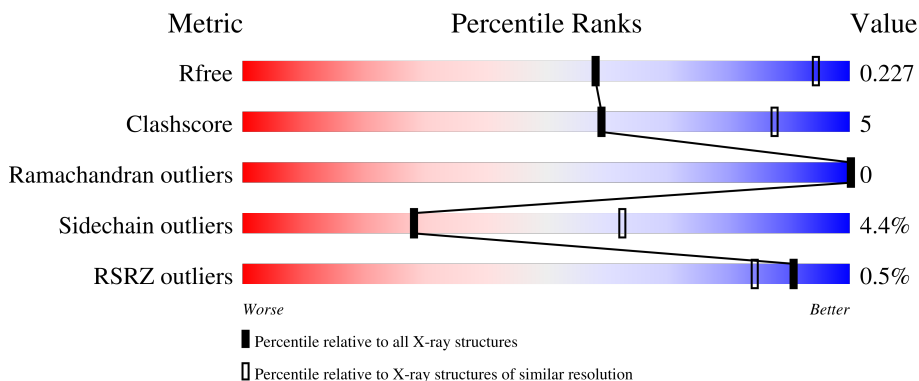
1 Overall quality at a glance

The following experimental techniques were used to determine the structure:

X-RAY DIFFRACTION



The reported resolution of this entry is 3.51 Å.

Percentile scores (ranging between 0-100) for global validation metrics of the entry are shown in the following graphic. The table shows the number of entries on which the scores are based.



Metric	Whole archive (#Entries)	Similar resolution (#Entries, resolution range(Å))
R_{free}	130704	1161 (3.60-3.44)
Clashscore	141614	1244 (3.60-3.44)
Ramachandran outliers	138981	1206 (3.60-3.44)
Sidechain outliers	138945	1207 (3.60-3.44)
RSRZ outliers	127900	1080 (3.60-3.44)

The table below summarises the geometric issues observed across the polymeric chains and their fit to the electron density. The red, orange, yellow and green segments of the lower bar indicate the fraction of residues that contain outliers for ≥ 3 , 2, 1 and 0 types of geometric quality criteria respectively. A grey segment represents the fraction of residues that are not modelled. The numeric value for each fraction is indicated below the corresponding segment, with a dot representing fractions $\leq 5\%$. The upper red bar (where present) indicates the fraction of residues that have poor fit to the electron density. The numeric value is given above the bar.

Mol	Chain	Length	Quality of chain
1	A	511	 84% 11% 5%
1	B	511	 84% 11% 5%

The following table lists non-polymeric compounds, carbohydrate monomers and non-standard residues in protein, DNA, RNA chains that are outliers for geometric or electron-density-fit criteria:

Mol	Type	Chain	Res	Chirality	Geometry	Clashes	Electron density
3	RDS	A	502	-	-	-	X
3	RDS	B	503	-	-	X	-

2 Entry composition i

There are 4 unique types of molecules in this entry. The entry contains 7617 atoms, of which 0 are hydrogens and 0 are deuteriums.

In the tables below, the ZeroOcc column contains the number of atoms modelled with zero occupancy, the AltConf column contains the number of residues with at least one atom in alternate conformation and the Trace column contains the number of residues modelled with at most 2 atoms.

- Molecule 1 is a protein called Trypanothione reductase.

Mol	Chain	Residues	Atoms					ZeroOcc	AltConf	Trace
			Total	C	N	O	S			
1	A	486	3680	2313	632	708	27	0	0	0
1	B	487	3686	2317	633	710	26	0	0	0

There are 40 discrepancies between the modelled and reference sequences:

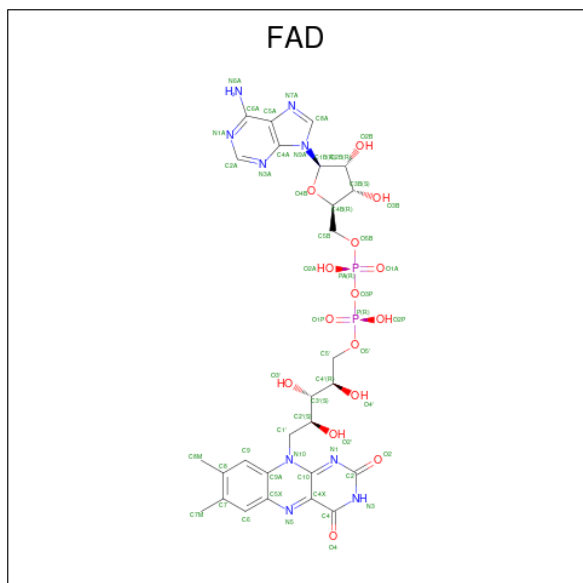
Chain	Residue	Modelled	Actual	Comment	Reference
A	-19	MET	-	initiating methionine	UNP A4HSF7
A	-18	GLY	-	expression tag	UNP A4HSF7
A	-17	SER	-	expression tag	UNP A4HSF7
A	-16	SER	-	expression tag	UNP A4HSF7
A	-15	HIS	-	expression tag	UNP A4HSF7
A	-14	HIS	-	expression tag	UNP A4HSF7
A	-13	HIS	-	expression tag	UNP A4HSF7
A	-12	HIS	-	expression tag	UNP A4HSF7
A	-11	HIS	-	expression tag	UNP A4HSF7
A	-10	HIS	-	expression tag	UNP A4HSF7
A	-9	SER	-	expression tag	UNP A4HSF7
A	-8	SER	-	expression tag	UNP A4HSF7
A	-7	GLY	-	expression tag	UNP A4HSF7
A	-6	LEU	-	expression tag	UNP A4HSF7
A	-5	VAL	-	expression tag	UNP A4HSF7
A	-4	PRO	-	expression tag	UNP A4HSF7
A	-3	ARG	-	expression tag	UNP A4HSF7
A	-2	GLY	-	expression tag	UNP A4HSF7
A	-1	SER	-	expression tag	UNP A4HSF7
A	0	HIS	-	expression tag	UNP A4HSF7
B	-19	MET	-	initiating methionine	UNP A4HSF7
B	-18	GLY	-	expression tag	UNP A4HSF7
B	-17	SER	-	expression tag	UNP A4HSF7
B	-16	SER	-	expression tag	UNP A4HSF7
B	-15	HIS	-	expression tag	UNP A4HSF7

Continued on next page...

Continued from previous page...

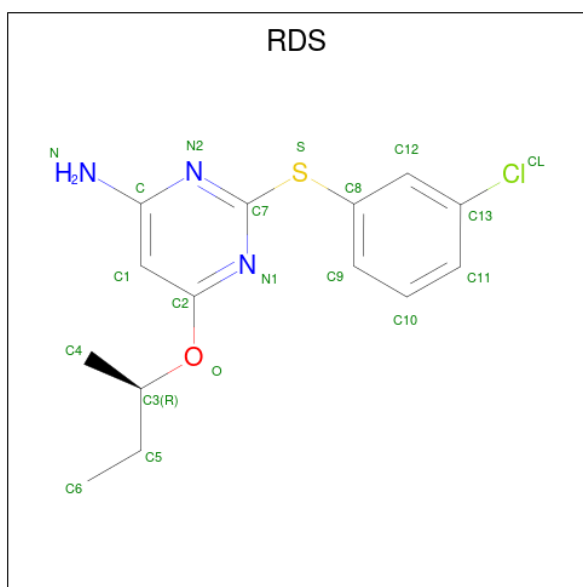
Chain	Residue	Modelled	Actual	Comment	Reference
B	-14	HIS	-	expression tag	UNP A4HSF7
B	-13	HIS	-	expression tag	UNP A4HSF7
B	-12	HIS	-	expression tag	UNP A4HSF7
B	-11	HIS	-	expression tag	UNP A4HSF7
B	-10	HIS	-	expression tag	UNP A4HSF7
B	-9	SER	-	expression tag	UNP A4HSF7
B	-8	SER	-	expression tag	UNP A4HSF7
B	-7	GLY	-	expression tag	UNP A4HSF7
B	-6	LEU	-	expression tag	UNP A4HSF7
B	-5	VAL	-	expression tag	UNP A4HSF7
B	-4	PRO	-	expression tag	UNP A4HSF7
B	-3	ARG	-	expression tag	UNP A4HSF7
B	-2	GLY	-	expression tag	UNP A4HSF7
B	-1	SER	-	expression tag	UNP A4HSF7
B	0	HIS	-	expression tag	UNP A4HSF7

- Molecule 2 is FLAVIN-ADENINE DINUCLEOTIDE (three-letter code: FAD) (formula: $C_{27}H_{33}N_9O_{15}P_2$).



Mol	Chain	Residues	Atoms				ZeroOcc	AltConf	
2	A	1	Total	C	N	O	P	0	0
			53	27	9	15	2		
2	B	1	Total	C	N	O	P	0	0
			53	27	9	15	2		

- Molecule 3 is 6-sec-Butoxy-2-[(3-chlorophenyl)sulfanyl]-4-pyrimidinamine (three-letter code: RDS) (formula: $C_{14}H_{16}ClN_3OS$).



Mol	Chain	Residues	Atoms					ZeroOcc	AltConf	
			Total	C	Cl	N	O			S
3	A	1	Total	C	Cl	N	O	S	0	0
			20	14	1	3	1	1		
3	A	1	Total	C	Cl	N	O	S	0	0
			20	14	1	3	1	1		
3	A	1	Total	C	Cl	N	O	S	0	0
			20	14	1	3	1	1		
3	B	1	Total	C	Cl	N	O	S	0	0
			20	14	1	3	1	1		
3	B	1	Total	C	Cl	N	O	S	0	0
			20	14	1	3	1	1		
3	B	1	Total	C	Cl	N	O	S	0	0
			20	14	1	3	1	1		

- Molecule 4 is SULFATE ION (three-letter code: SO4) (formula: O₄S).

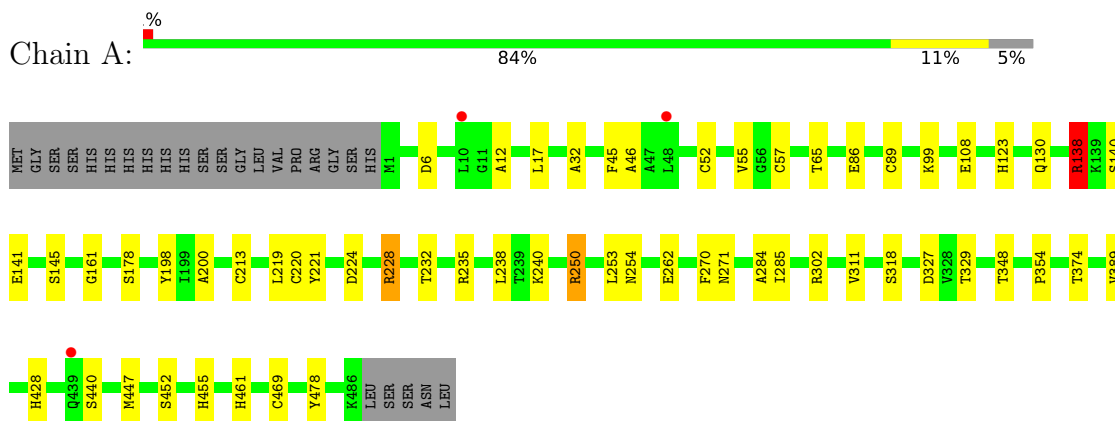


Mol	Chain	Residues	Atoms			ZeroOcc	AltConf
4	A	1	Total	O	S	0	0
			5	4	1		

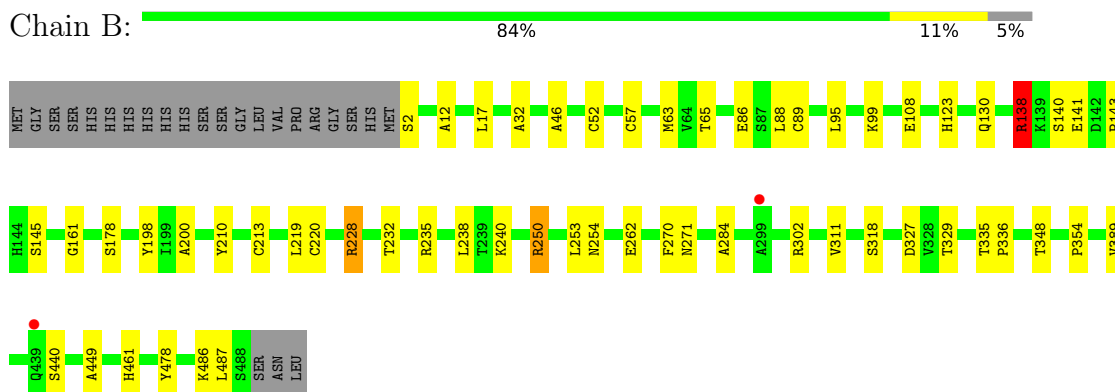
3 Residue-property plots [i](#)

These plots are drawn for all protein, RNA, DNA and oligosaccharide chains in the entry. The first graphic for a chain summarises the proportions of the various outlier classes displayed in the second graphic. The second graphic shows the sequence view annotated by issues in geometry and electron density. Residues are color-coded according to the number of geometric quality criteria for which they contain at least one outlier: green = 0, yellow = 1, orange = 2 and red = 3 or more. A red dot above a residue indicates a poor fit to the electron density ($RSRZ > 2$). Stretches of 2 or more consecutive residues without any outlier are shown as a green connector. Residues present in the sample, but not in the model, are shown in grey.

- Molecule 1: Trypanothione reductase



- Molecule 1: Trypanothione reductase



4 Data and refinement statistics i

Property	Value	Source
Space group	P 41	Depositor
Cell constants a, b, c, α , β , γ	102.50Å 102.50Å 192.00Å 90.00° 90.00° 90.00°	Depositor
Resolution (Å)	48.00 – 3.51 48.00 – 3.50	Depositor EDS
% Data completeness (in resolution range)	99.6 (48.00-3.51) 99.6 (48.00-3.50)	Depositor EDS
R_{merge}	0.20	Depositor
R_{sym}	(Not available)	Depositor
$\langle I/\sigma(I) \rangle$ ¹	1.74 (at 3.48Å)	Xtriage
Refinement program	REFMAC 5.8.0107	Depositor
R, R_{free}	0.208 , 0.233 0.207 , 0.227	Depositor DCC
R_{free} test set	1261 reflections (5.06%)	wwPDB-VP
Wilson B-factor (Å ²)	95.5	Xtriage
Anisotropy	0.006	Xtriage
Bulk solvent k_{sol} (e/Å ³), B_{sol} (Å ²)	0.34 , 88.1	EDS
L-test for twinning ²	$\langle L \rangle = 0.46$, $\langle L^2 \rangle = 0.28$	Xtriage
Estimated twinning fraction	0.379 for h,-k,-l	Xtriage
Reported twinning fraction	0.543 for H, K, L 0.457 for -H, K, -L	Depositor
Outliers	0 of 24912 reflections	Xtriage
F_o, F_c correlation	0.93	EDS
Total number of atoms	7617	wwPDB-VP
Average B, all atoms (Å ²)	113.0	wwPDB-VP

Xtriage's analysis on translational NCS is as follows: *The largest off-origin peak in the Patterson function is 3.67% of the height of the origin peak. No significant pseudotranslation is detected.*

¹Intensities estimated from amplitudes.

²Theoretical values of $\langle |L| \rangle$, $\langle L^2 \rangle$ for acentric reflections are 0.5, 0.333 respectively for untwinned datasets, and 0.375, 0.2 for perfectly twinned datasets.

5 Model quality [i](#)

5.1 Standard geometry [i](#)

Bond lengths and bond angles in the following residue types are not validated in this section: SO4, FAD, RDS

The Z score for a bond length (or angle) is the number of standard deviations the observed value is removed from the expected value. A bond length (or angle) with $|Z| > 5$ is considered an outlier worth inspection. RMSZ is the root-mean-square of all Z scores of the bond lengths (or angles).

Mol	Chain	Bond lengths		Bond angles	
		RMSZ	# Z >5	RMSZ	# Z >5
1	A	0.47	0/3753	0.86	6/5081 (0.1%)
1	B	0.48	0/3759	0.87	6/5090 (0.1%)
All	All	0.48	0/7512	0.86	12/10171 (0.1%)

Chiral center outliers are detected by calculating the chiral volume of a chiral center and verifying if the center is modelled as a planar moiety or with the opposite hand. A planarity outlier is detected by checking planarity of atoms in a peptide group, atoms in a mainchain group or atoms of a sidechain that are expected to be planar.

Mol	Chain	#Chirality outliers	#Planarity outliers
1	A	0	1

There are no bond length outliers.

The worst 5 of 12 bond angle outliers are listed below:

Mol	Chain	Res	Type	Atoms	Z	Observed(°)	Ideal(°)
1	A	228	ARG	NE-CZ-NH1	-19.72	110.44	120.30
1	B	228	ARG	NE-CZ-NH2	-19.64	110.48	120.30
1	B	138	ARG	NE-CZ-NH1	-18.97	110.82	120.30
1	A	138	ARG	NE-CZ-NH2	-18.80	110.90	120.30
1	B	138	ARG	NE-CZ-NH2	17.06	128.83	120.30

There are no chirality outliers.

All (1) planarity outliers are listed below:

Mol	Chain	Res	Type	Group
1	A	138	ARG	Sidechain

5.2 Too-close contacts [i](#)

In the following table, the Non-H and H(model) columns list the number of non-hydrogen atoms and hydrogen atoms in the chain respectively. The H(added) column lists the number of hydrogen atoms added and optimized by MolProbity. The Clashes column lists the number of clashes within the asymmetric unit, whereas Symm-Clashes lists symmetry-related clashes.

Mol	Chain	Non-H	H(model)	H(added)	Clashes	Symm-Clashes
1	A	3680	0	3627	38	0
1	B	3686	0	3631	37	0
2	A	53	0	31	1	0
2	B	53	0	31	1	0
3	A	60	0	0	7	0
3	B	80	0	0	9	0
4	A	5	0	0	0	0
All	All	7617	0	7320	70	0

The all-atom clashscore is defined as the number of clashes found per 1000 atoms (including hydrogen atoms). The all-atom clashscore for this structure is 5.

The worst 5 of 70 close contacts within the same asymmetric unit are listed below, sorted by their clash magnitude.

Atom-1	Atom-2	Interatomic distance (Å)	Clash overlap (Å)
1:B:57:CYS:SG	3:B:503:RDS:CL	2.52	1.05
1:B:52:CYS:SG	3:B:503:RDS:CL	2.57	0.99
1:A:461:HIS:NE2	3:B:503:RDS:CL	2.43	0.89
1:A:89:CYS:SG	1:A:213:CYS:N	2.57	0.78
1:B:89:CYS:SG	1:B:213:CYS:N	2.57	0.77

There are no symmetry-related clashes.

5.3 Torsion angles [i](#)

5.3.1 Protein backbone [i](#)

In the following table, the Percentiles column shows the percent Ramachandran outliers of the chain as a percentile score with respect to all X-ray entries followed by that with respect to entries of similar resolution.

The Analysed column shows the number of residues for which the backbone conformation was analysed, and the total number of residues.

Mol	Chain	Analysed	Favoured	Allowed	Outliers	Percentiles	
1	A	484/511 (95%)	443 (92%)	41 (8%)	0	100	100
1	B	485/511 (95%)	445 (92%)	40 (8%)	0	100	100
All	All	969/1022 (95%)	888 (92%)	81 (8%)	0	100	100

There are no Ramachandran outliers to report.

5.3.2 Protein sidechains [i](#)

In the following table, the Percentiles column shows the percent sidechain outliers of the chain as a percentile score with respect to all X-ray entries followed by that with respect to entries of similar resolution.

The Analysed column shows the number of residues for which the sidechain conformation was analysed, and the total number of residues.

Mol	Chain	Analysed	Rotameric	Outliers	Percentiles	
1	A	395/417 (95%)	378 (96%)	17 (4%)	29	62
1	B	396/417 (95%)	378 (96%)	18 (4%)	27	62
All	All	791/834 (95%)	756 (96%)	35 (4%)	28	62

5 of 35 residues with a non-rotameric sidechain are listed below:

Mol	Chain	Res	Type
1	B	228	ARG
1	B	238	LEU
1	B	262	GLU
1	A	240	LYS
1	A	238	LEU

Sometimes sidechains can be flipped to improve hydrogen bonding and reduce clashes. All (3) such sidechains are listed below:

Mol	Chain	Res	Type
1	A	254	ASN
1	A	340	ASN
1	B	340	ASN

5.3.3 RNA [i](#)

There are no RNA molecules in this entry.

5.4 Non-standard residues in protein, DNA, RNA chains [i](#)

There are no non-standard protein/DNA/RNA residues in this entry.

5.5 Carbohydrates [i](#)

There are no monosaccharides in this entry.

5.6 Ligand geometry [i](#)

10 ligands are modelled in this entry.

In the following table, the Counts columns list the number of bonds (or angles) for which Mogul statistics could be retrieved, the number of bonds (or angles) that are observed in the model and the number of bonds (or angles) that are defined in the Chemical Component Dictionary. The Link column lists molecule types, if any, to which the group is linked. The Z score for a bond length (or angle) is the number of standard deviations the observed value is removed from the expected value. A bond length (or angle) with $|Z| > 2$ is considered an outlier worth inspection. RMSZ is the root-mean-square of all Z scores of the bond lengths (or angles).

Mol	Type	Chain	Res	Link	Bond lengths			Bond angles		
					Counts	RMSZ	# Z > 2	Counts	RMSZ	# Z > 2
3	RDS	A	504	-	21,21,21	1.50	3 (14%)	27,28,28	2.28	7 (25%)
3	RDS	B	504	-	21,21,21	1.60	3 (14%)	27,28,28	2.12	7 (25%)
3	RDS	B	505	-	21,21,21	1.45	3 (14%)	27,28,28	2.23	7 (25%)
2	FAD	B	502	-	53,58,58	1.36	8 (15%)	68,89,89	1.40	10 (14%)
3	RDS	A	502	-	21,21,21	1.57	3 (14%)	27,28,28	2.07	6 (22%)
4	SO4	A	505	-	4,4,4	0.41	0	6,6,6	0.32	0
3	RDS	A	503	-	21,21,21	1.53	3 (14%)	27,28,28	2.24	7 (25%)
3	RDS	B	503	-	21,21,21	1.57	3 (14%)	27,28,28	2.15	7 (25%)
2	FAD	A	501	-	53,58,58	1.43	7 (13%)	68,89,89	1.41	10 (14%)
3	RDS	B	501	-	21,21,21	1.44	4 (19%)	27,28,28	2.28	7 (25%)

In the following table, the Chirals column lists the number of chiral outliers, the number of chiral centers analysed, the number of these observed in the model and the number defined in the Chemical Component Dictionary. Similar counts are reported in the Torsion and Rings columns. '-' means no outliers of that kind were identified.

Mol	Type	Chain	Res	Link	Chirals	Torsions	Rings
3	RDS	A	504	-	-	3/10/10/10	0/2/2/2
3	RDS	B	504	-	-	6/10/10/10	0/2/2/2

Continued on next page...

Continued from previous page...

Mol	Type	Chain	Res	Link	Chirals	Torsions	Rings
3	RDS	B	505	-	-	4/10/10/10	0/2/2/2
2	FAD	B	502	-	-	13/30/50/50	0/6/6/6
3	RDS	A	502	-	-	6/10/10/10	0/2/2/2
3	RDS	A	503	-	-	6/10/10/10	0/2/2/2
3	RDS	B	503	-	-	5/10/10/10	0/2/2/2
2	FAD	A	501	-	-	5/30/50/50	0/6/6/6
3	RDS	B	501	-	-	8/10/10/10	0/2/2/2

The worst 5 of 37 bond length outliers are listed below:

Mol	Chain	Res	Type	Atoms	Z	Observed(Å)	Ideal(Å)
2	A	501	FAD	C9A-C5X	5.46	1.50	1.41
2	B	502	FAD	C9A-C5X	5.14	1.49	1.41
3	B	504	RDS	C7-S	-4.74	1.69	1.75
3	A	502	RDS	C7-S	-4.68	1.69	1.75
3	B	503	RDS	C7-S	-4.54	1.69	1.75

The worst 5 of 68 bond angle outliers are listed below:

Mol	Chain	Res	Type	Atoms	Z	Observed(°)	Ideal(°)
3	B	505	RDS	C7-N1-C2	6.99	120.79	114.82
3	A	504	RDS	C7-N1-C2	6.92	120.72	114.82
3	B	503	RDS	C7-N1-C2	6.90	120.71	114.82
3	A	503	RDS	C7-N1-C2	6.85	120.67	114.82
3	A	502	RDS	C7-N1-C2	6.70	120.53	114.82

There are no chirality outliers.

5 of 56 torsion outliers are listed below:

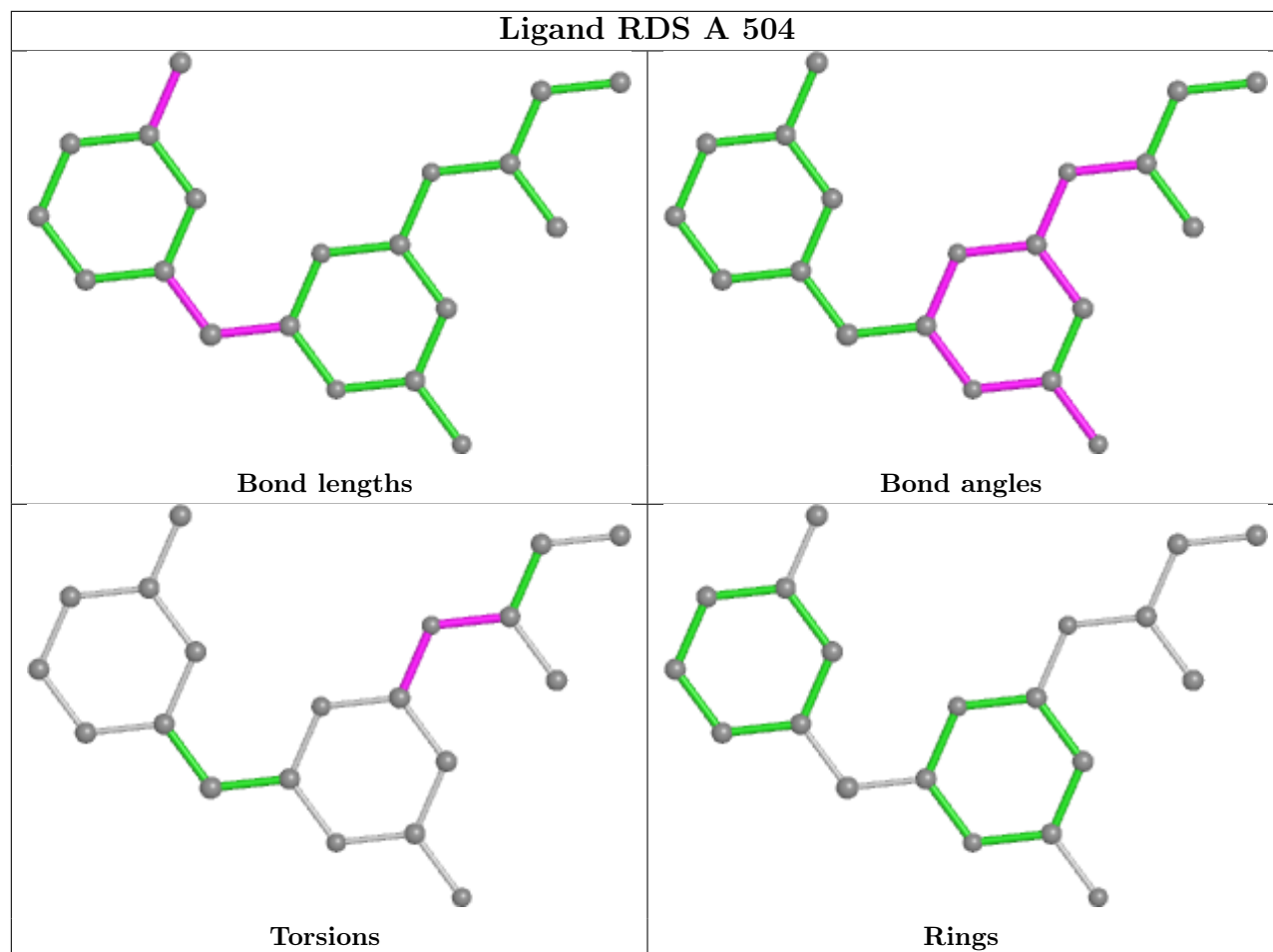
Mol	Chain	Res	Type	Atoms
2	A	501	FAD	O4B-C4B-C5B-O5B
2	A	501	FAD	C3B-C4B-C5B-O5B
2	B	502	FAD	C5B-O5B-PA-O1A
2	B	502	FAD	C3B-C4B-C5B-O5B
2	B	502	FAD	C1'-C2'-C3'-O3'

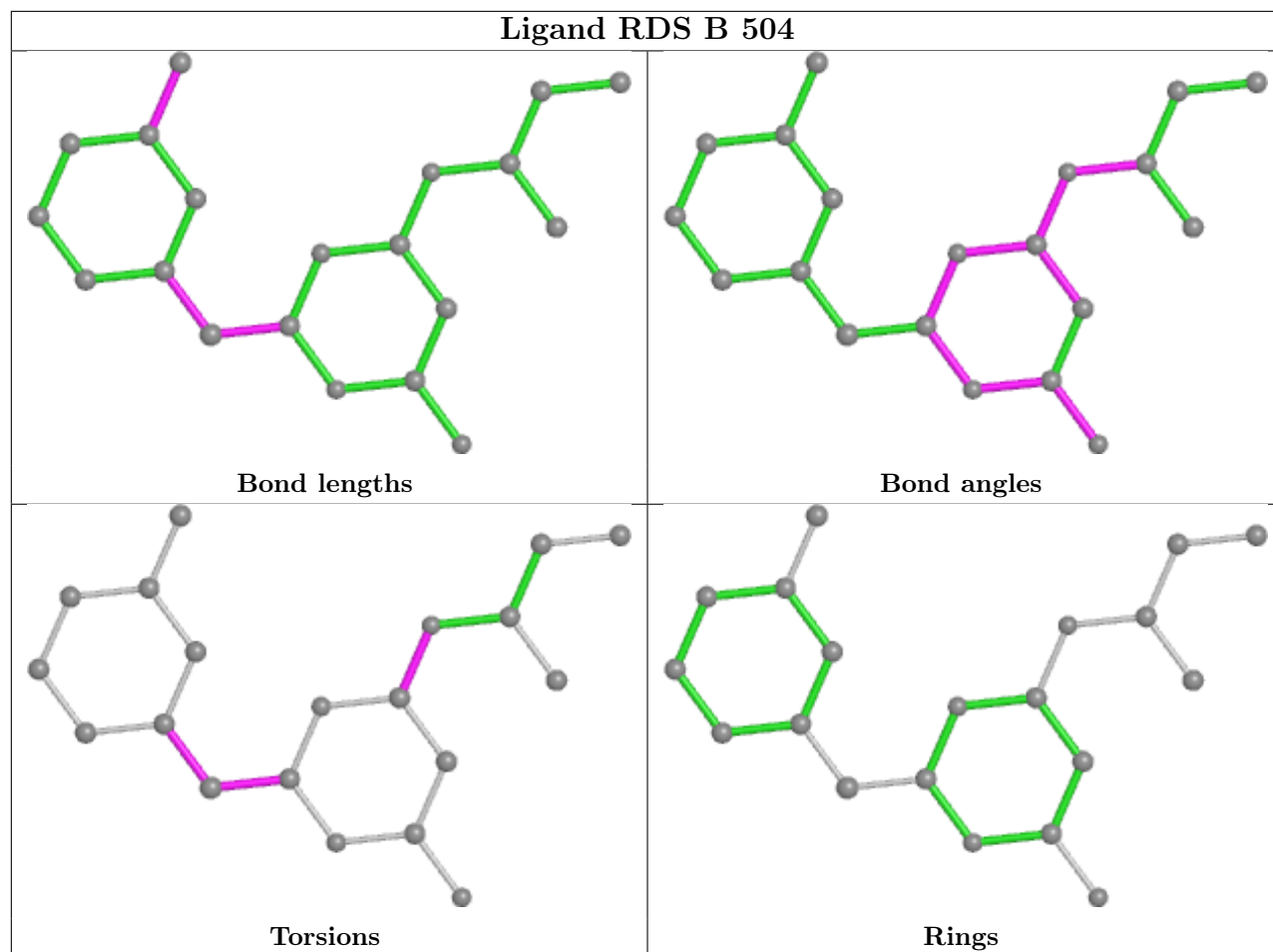
There are no ring outliers.

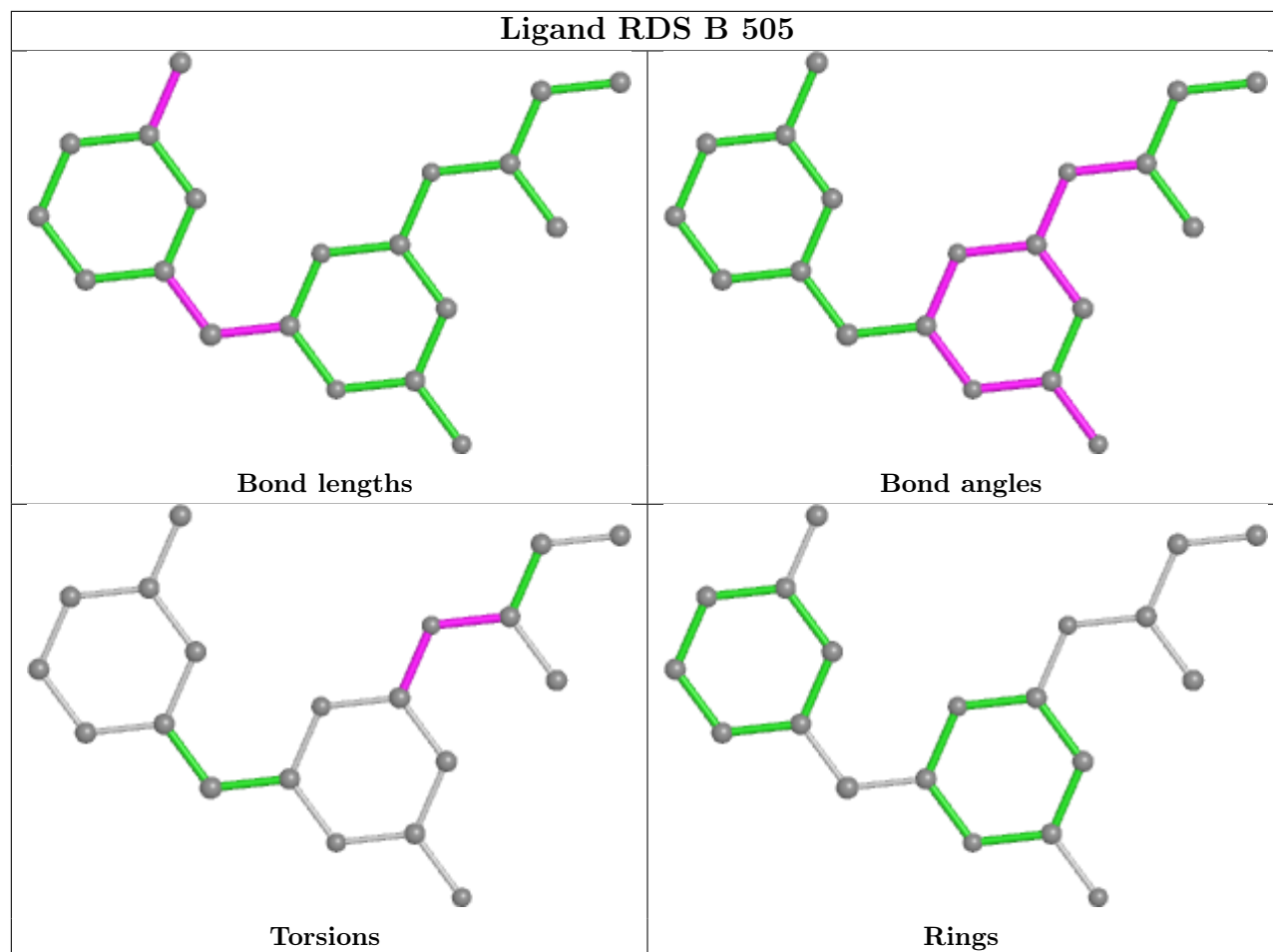
8 monomers are involved in 18 short contacts:

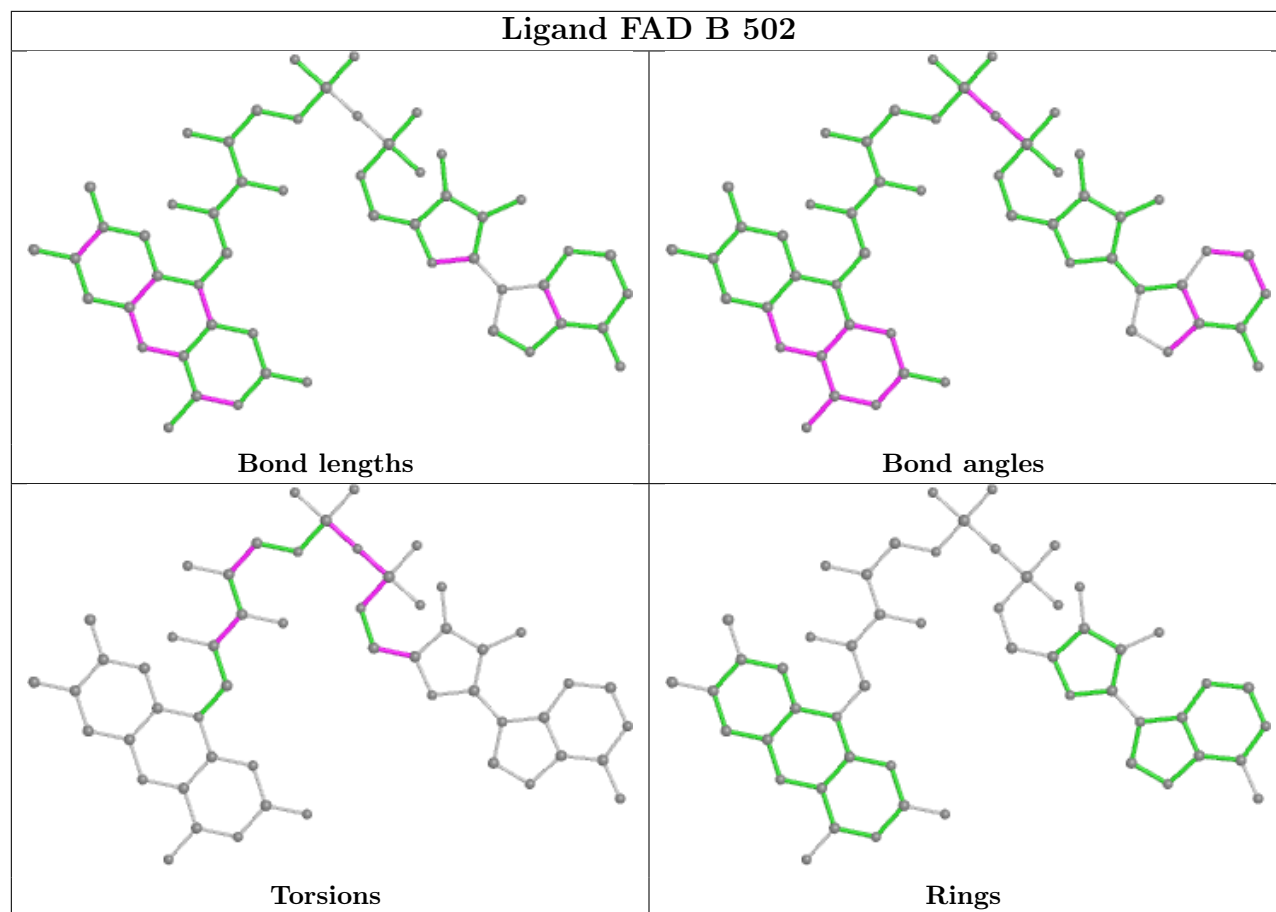
Mol	Chain	Res	Type	Clashes	Symm-Clashes
3	A	504	RDS	2	0
3	B	504	RDS	1	0
3	B	505	RDS	1	0
2	B	502	FAD	1	0
3	A	502	RDS	1	0
3	A	503	RDS	4	0
3	B	503	RDS	7	0
2	A	501	FAD	1	0

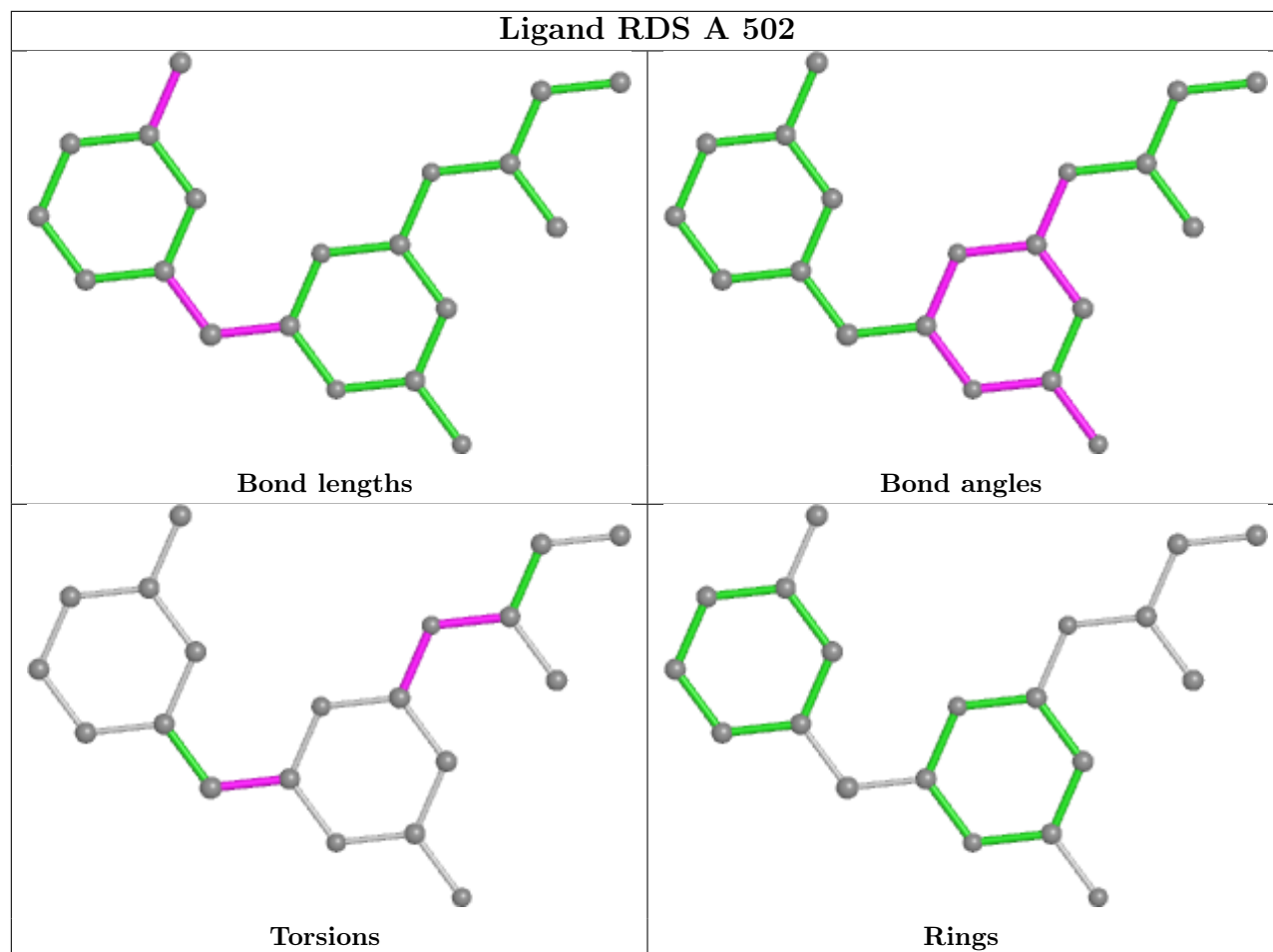
The following is a two-dimensional graphical depiction of Mogul quality analysis of bond lengths, bond angles, torsion angles, and ring geometry for all instances of the Ligand of Interest. In addition, ligands with molecular weight > 250 and outliers as shown on the validation Tables will also be included. For torsion angles, if less than 5% of the Mogul distribution of torsion angles is within 10 degrees of the torsion angle in question, then that torsion angle is considered an outlier. Any bond that is central to one or more torsion angles identified as an outlier by Mogul will be highlighted in the graph. For rings, the root-mean-square deviation (RMSD) between the ring in question and similar rings identified by Mogul is calculated over all ring torsion angles. If the average RMSD is greater than 60 degrees and the minimal RMSD between the ring in question and any Mogul-identified rings is also greater than 60 degrees, then that ring is considered an outlier. The outliers are highlighted in purple. The color gray indicates Mogul did not find sufficient equivalents in the CSD to analyse the geometry.

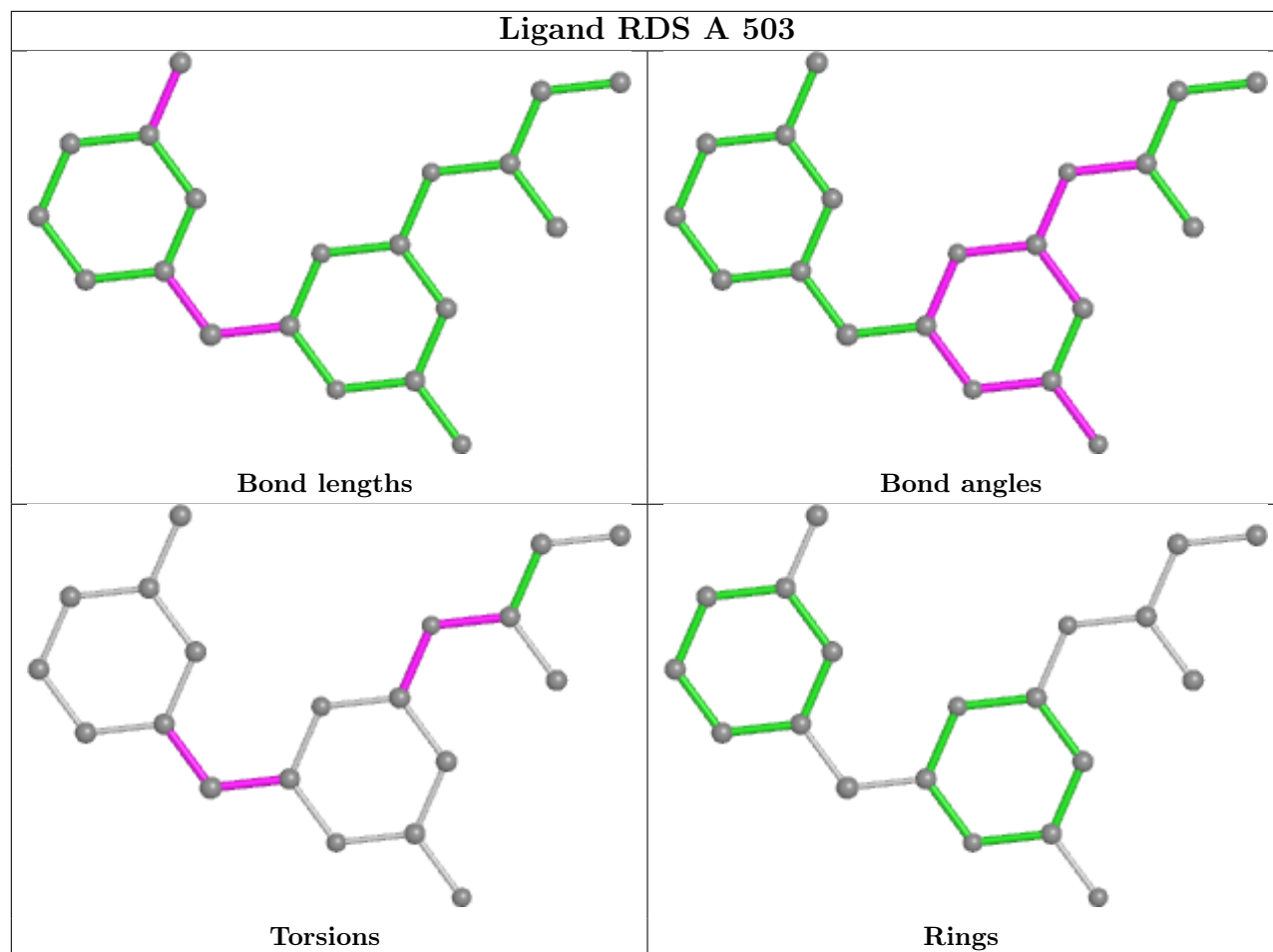


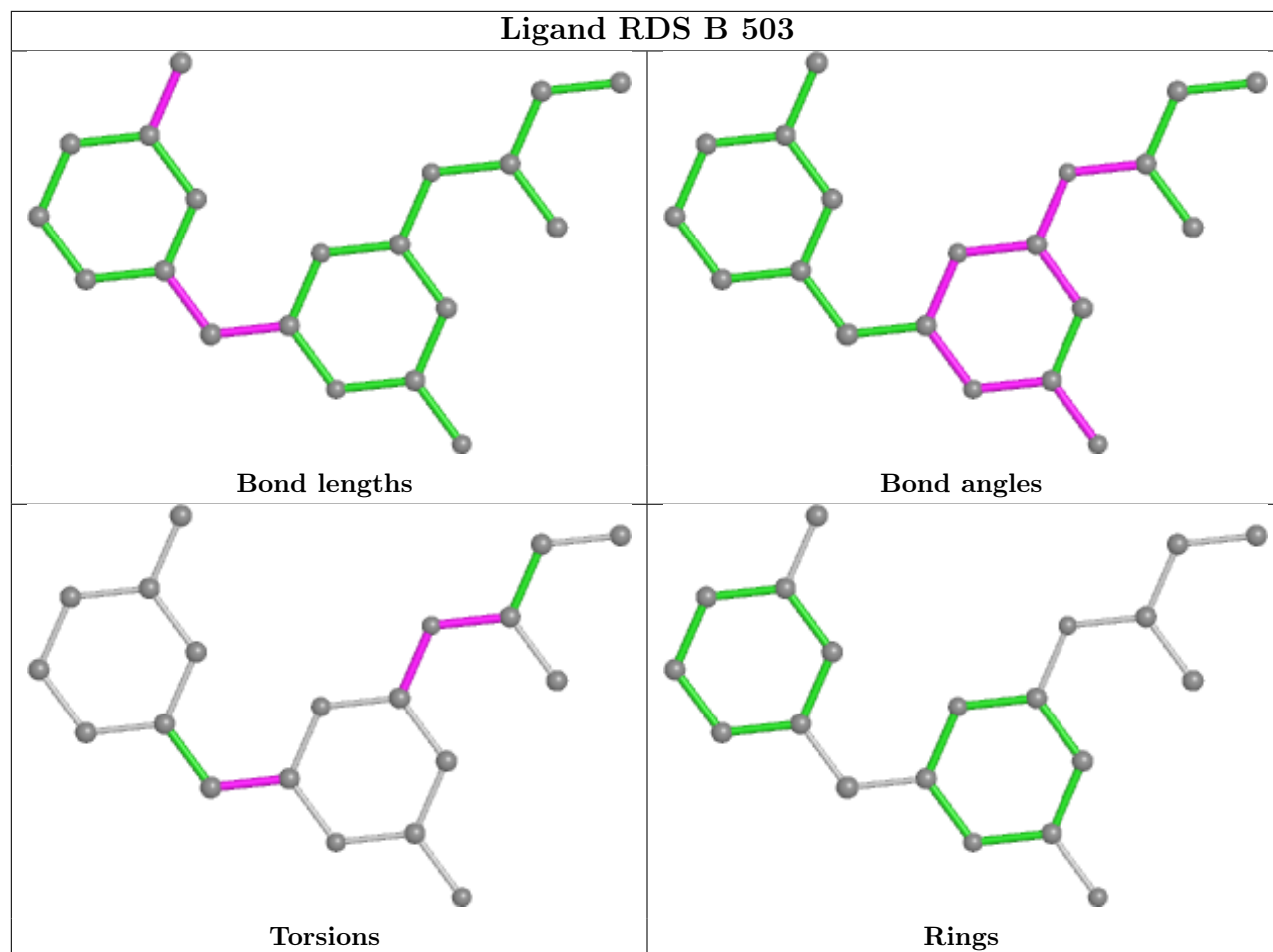


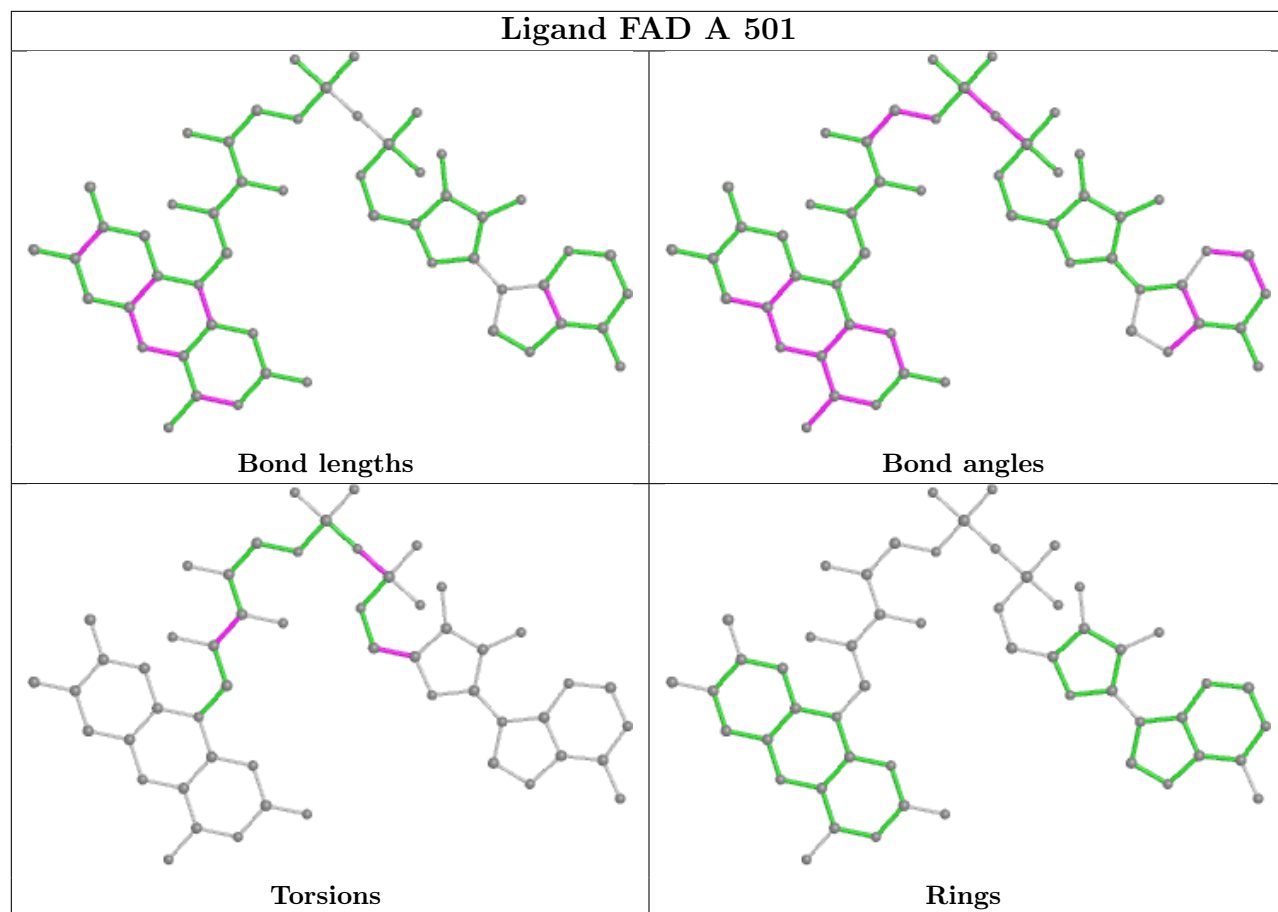


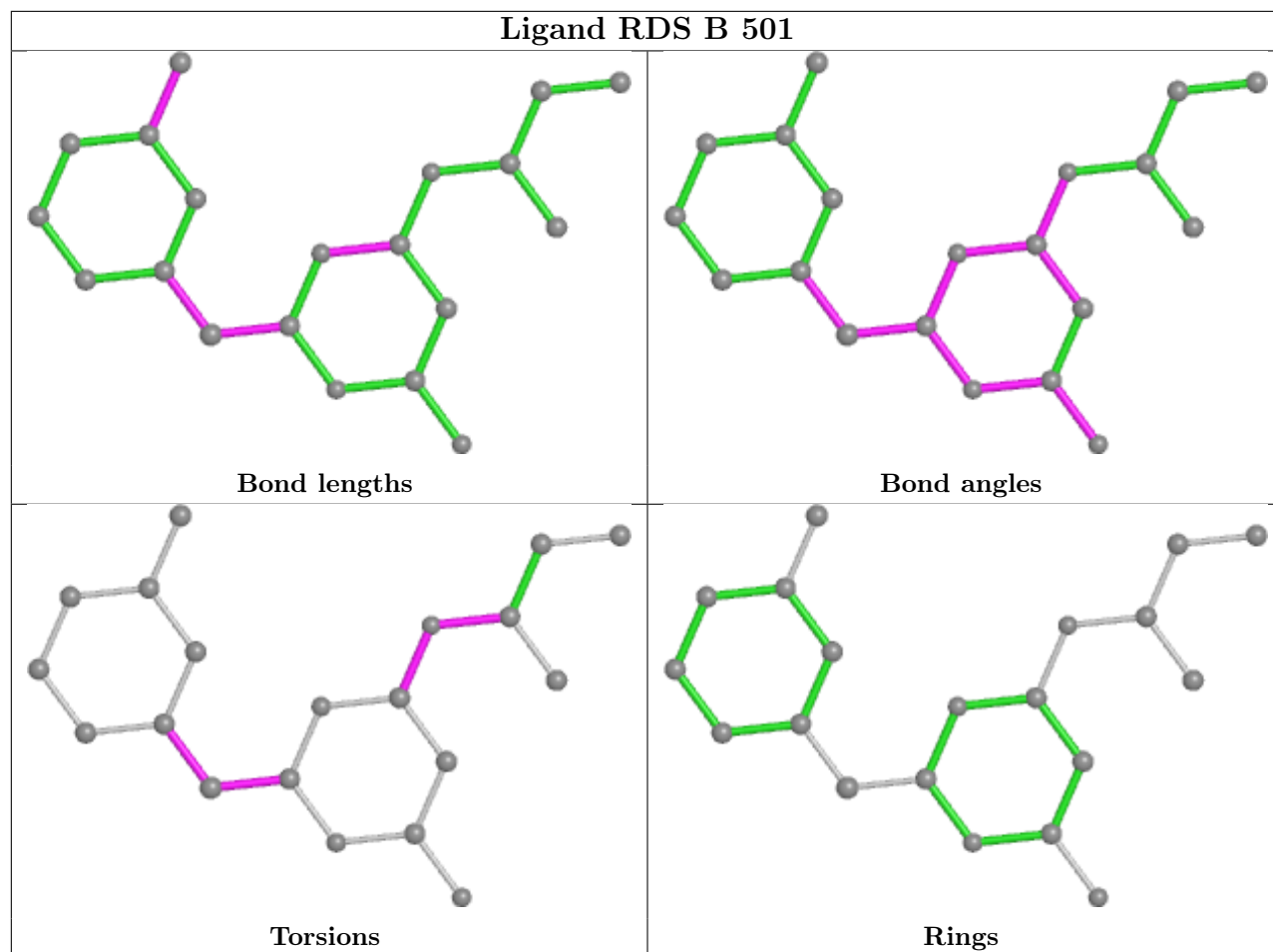












5.7 Other polymers [i](#)

There are no such residues in this entry.

5.8 Polymer linkage issues [i](#)

There are no chain breaks in this entry.

6 Fit of model and data [i](#)

6.1 Protein, DNA and RNA chains [i](#)

In the following table, the column labelled ‘#RSRZ > 2’ contains the number (and percentage) of RSRZ outliers, followed by percent RSRZ outliers for the chain as percentile scores relative to all X-ray entries and entries of similar resolution. The OWAB column contains the minimum, median, 95th percentile and maximum values of the occupancy-weighted average B-factor per residue. The column labelled ‘Q < 0.9’ lists the number of (and percentage) of residues with an average occupancy less than 0.9.

Mol	Chain	Analysed	<RSRZ>	#RSRZ>2	OWAB(Å ²)	Q<0.9
1	A	486/511 (95%)	0.31	3 (0%) 89 81	77, 112, 142, 183	0
1	B	487/511 (95%)	0.31	2 (0%) 92 87	80, 109, 143, 193	0
All	All	973/1022 (95%)	0.31	5 (0%) 91 84	77, 110, 143, 193	0

All (5) RSRZ outliers are listed below:

Mol	Chain	Res	Type	RSRZ
1	B	299	ALA	2.7
1	A	48	LEU	2.4
1	A	10	LEU	2.1
1	B	439	GLN	2.1
1	A	439	GLN	2.1

6.2 Non-standard residues in protein, DNA, RNA chains [i](#)

There are no non-standard protein/DNA/RNA residues in this entry.

6.3 Carbohydrates [i](#)

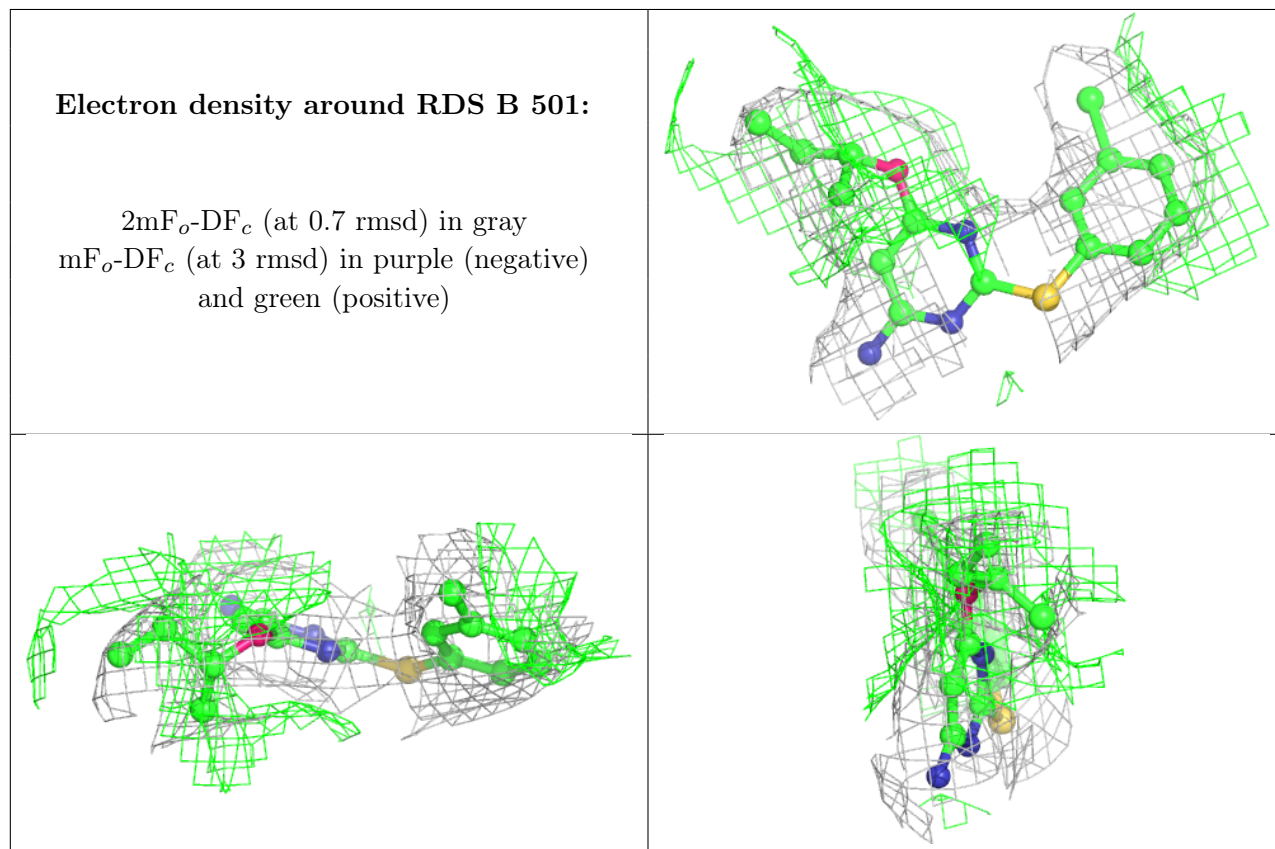
There are no monosaccharides in this entry.

6.4 Ligands [i](#)

In the following table, the Atoms column lists the number of modelled atoms in the group and the number defined in the chemical component dictionary. The B-factors column lists the minimum, median, 95th percentile and maximum values of B factors of atoms in the group. The column labelled ‘Q < 0.9’ lists the number of atoms with occupancy less than 0.9.

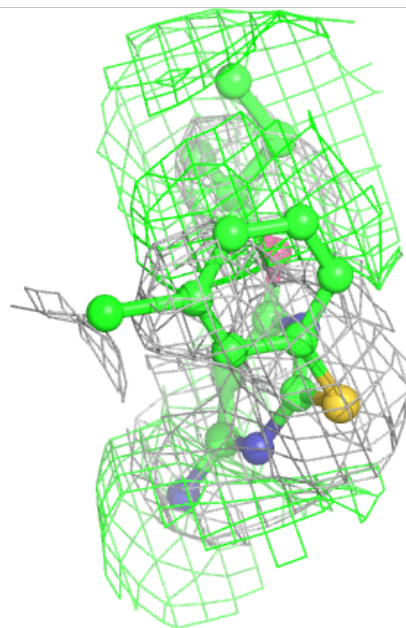
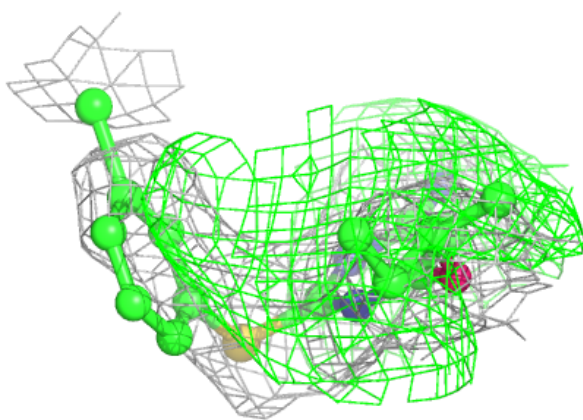
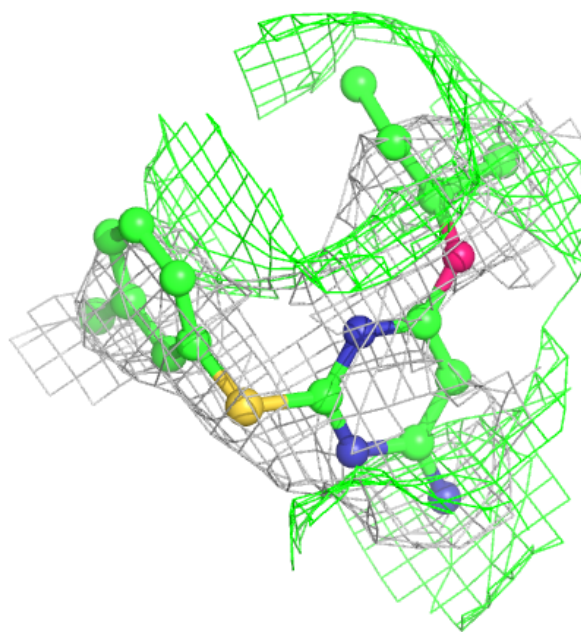
Mol	Type	Chain	Res	Atoms	RSCC	RSR	B-factors(\AA^2)	Q<0.9
3	RDS	B	501	20/20	0.78	0.22	95,108,112,113	20
3	RDS	A	502	20/20	0.80	0.49	110,132,139,148	20
3	RDS	B	505	20/20	0.83	0.29	121,134,145,146	20
3	RDS	B	504	20/20	0.86	0.44	122,129,141,150	20
3	RDS	A	503	20/20	0.86	0.40	104,129,134,137	20
3	RDS	A	504	20/20	0.88	0.17	114,131,141,142	20
3	RDS	B	503	20/20	0.89	0.28	98,134,159,159	0
4	SO4	A	505	5/5	0.91	0.28	96,101,107,111	0
2	FAD	A	501	53/53	0.98	0.35	88,108,130,133	0
2	FAD	B	502	53/53	0.98	0.37	88,102,131,135	0

The following is a graphical depiction of the model fit to experimental electron density of all instances of the Ligand of Interest. In addition, ligands with molecular weight > 250 and outliers as shown on the geometry validation Tables will also be included. Each fit is shown from different orientation to approximate a three-dimensional view.



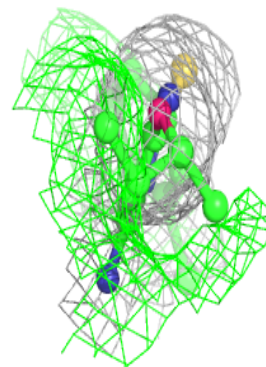
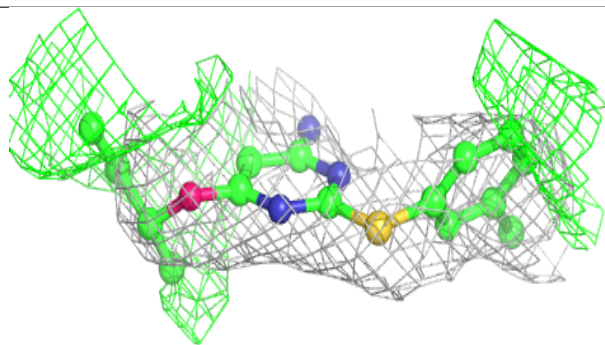
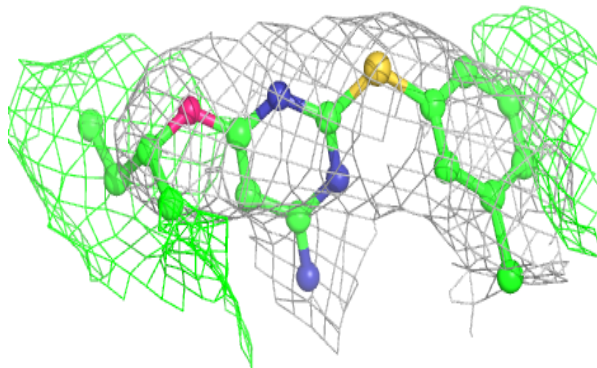
Electron density around RDS A 502:

$2mF_o-DF_c$ (at 0.7 rmsd) in gray
 mF_o-DF_c (at 3 rmsd) in purple (negative)
and green (positive)



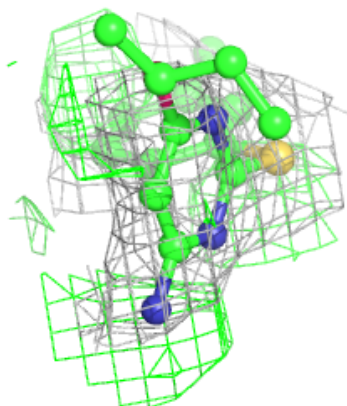
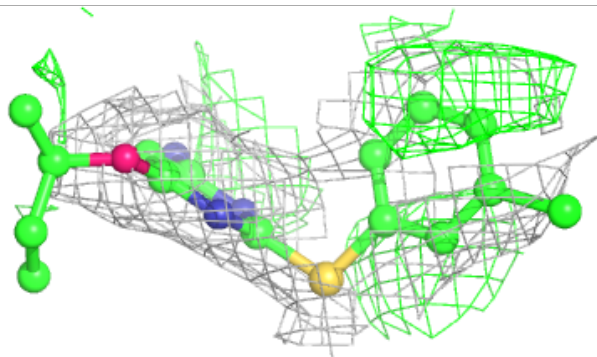
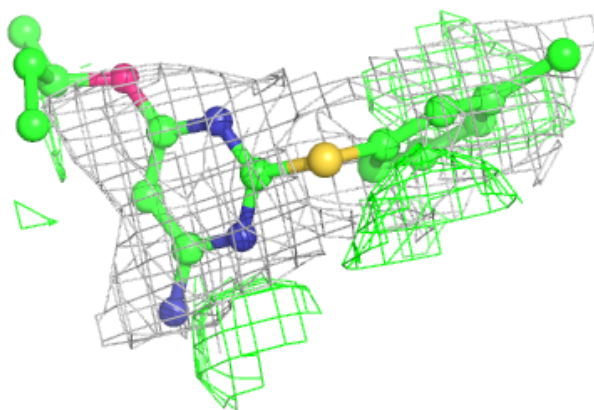
Electron density around RDS B 505:

$2mF_o-DF_c$ (at 0.7 rmsd) in gray
 mF_o-DF_c (at 3 rmsd) in purple (negative)
and green (positive)



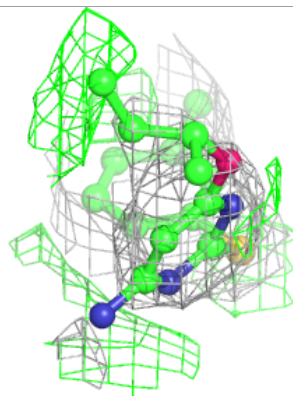
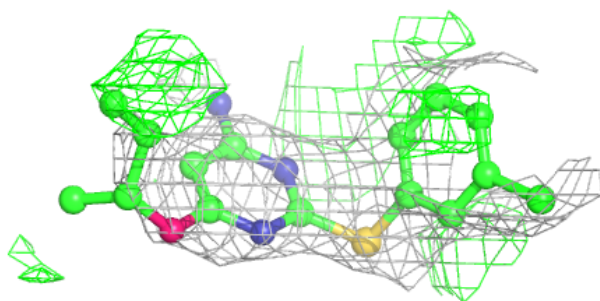
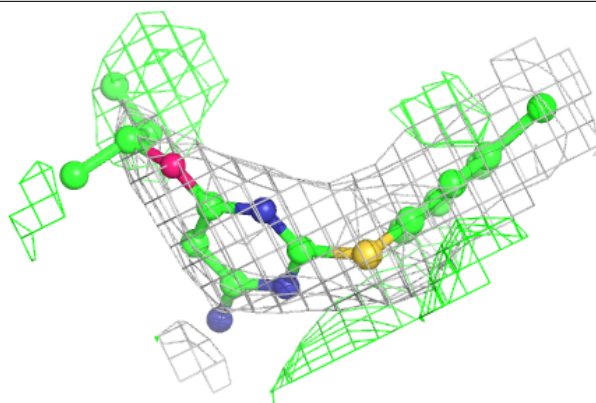
Electron density around RDS B 504:

$2mF_o-DF_c$ (at 0.7 rmsd) in gray
 mF_o-DF_c (at 3 rmsd) in purple (negative)
and green (positive)

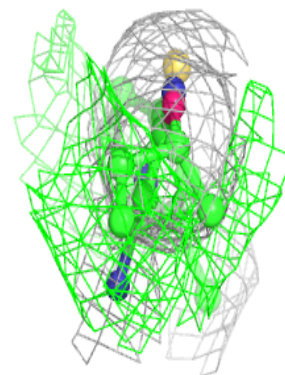
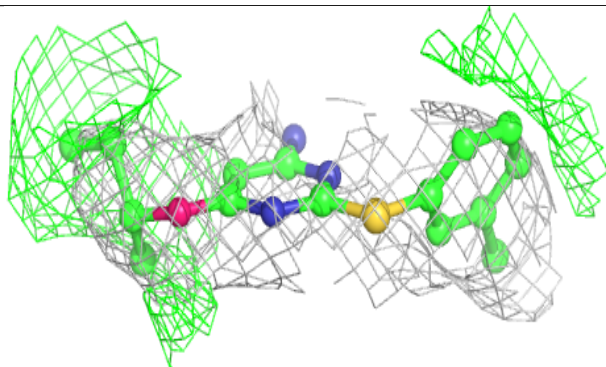
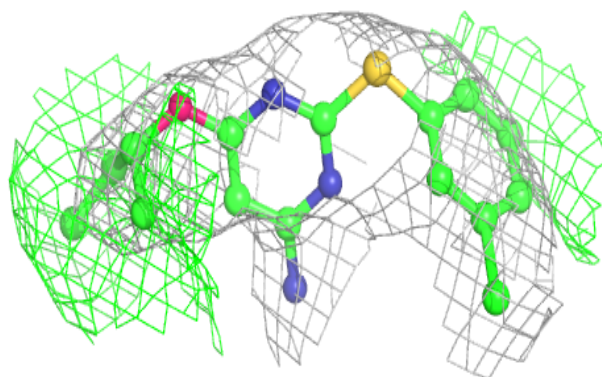


Electron density around RDS A 503:

$2mF_o-DF_c$ (at 0.7 rmsd) in gray
 mF_o-DF_c (at 3 rmsd) in purple (negative)
and green (positive)

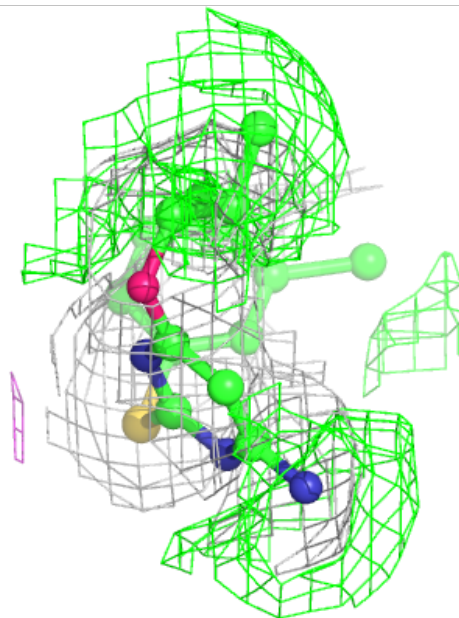
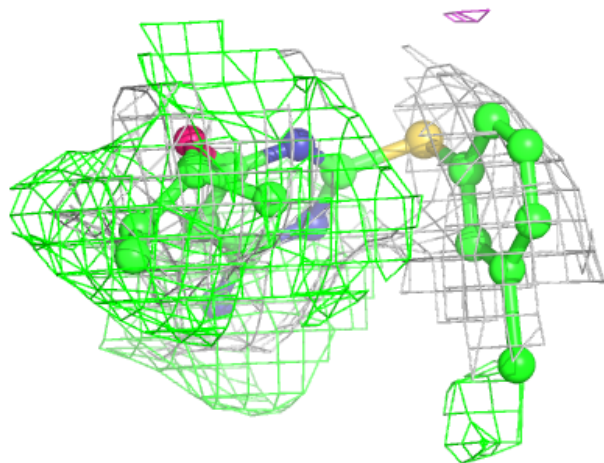
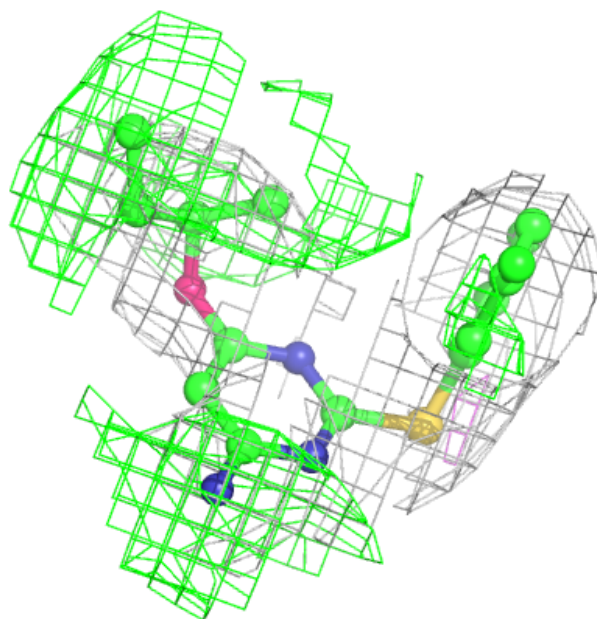
**Electron density around RDS A 504:**

$2mF_o-DF_c$ (at 0.7 rmsd) in gray
 mF_o-DF_c (at 3 rmsd) in purple (negative)
and green (positive)



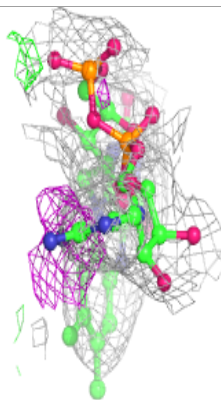
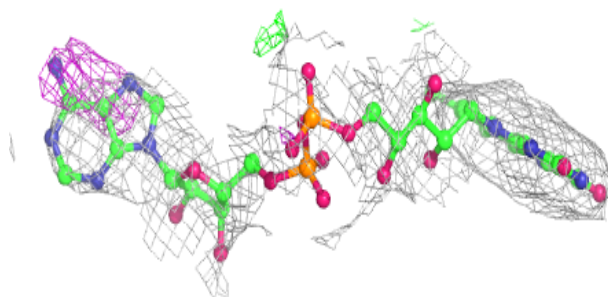
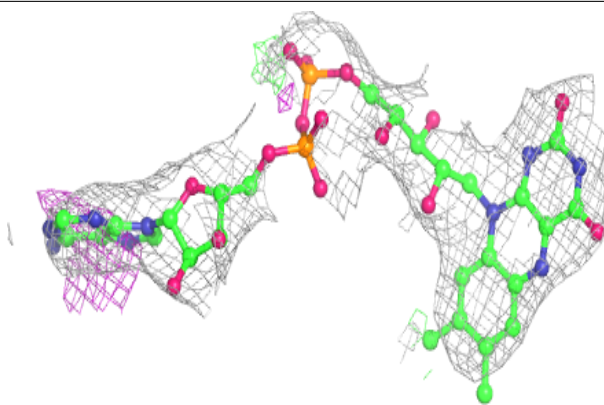
Electron density around RDS B 503:

$2mF_o-DF_c$ (at 0.7 rmsd) in gray
 mF_o-DF_c (at 3 rmsd) in purple (negative)
and green (positive)

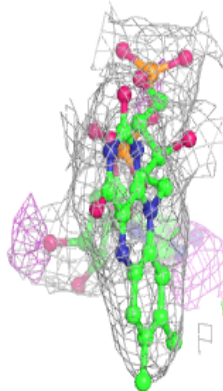
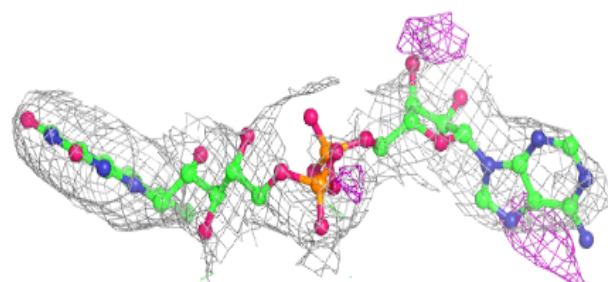
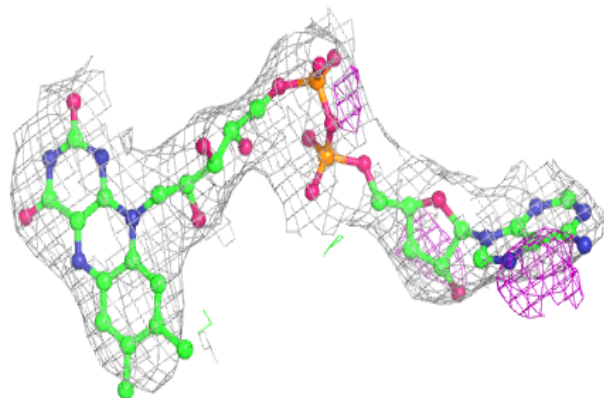


Electron density around FAD A 501:

$2mF_o-DF_c$ (at 0.7 rmsd) in gray
 mF_o-DF_c (at 3 rmsd) in purple (negative)
and green (positive)

**Electron density around FAD B 502:**

$2mF_o-DF_c$ (at 0.7 rmsd) in gray
 mF_o-DF_c (at 3 rmsd) in purple (negative)
and green (positive)



6.5 Other polymers [i](#)

There are no such residues in this entry.