



Full wwPDB X-ray Structure Validation Report ⓘ

Jan 28, 2024 – 02:43 PM EST

PDB ID : 1ED4
Title : BOVINE ENDOTHELIAL NITRIC OXIDE SYNTHASE HEME DOMAIN
COMPLEXED WITH IPITU (H4B FREE)
Authors : Raman, C.S.; Li, H.; Martasek, P.; Kral, V.; Masters, B.S.S.; Poulos, T.L.
Deposited on : 2000-01-26
Resolution : 1.86 Å(reported)

This is a Full wwPDB X-ray Structure Validation Report for a publicly released PDB entry.

We welcome your comments at validation@mail.wwpdb.org

A user guide is available at

<https://www.wwpdb.org/validation/2017/XrayValidationReportHelp>

with specific help available everywhere you see the ⓘ symbol.

The types of validation reports are described at

<http://www.wwpdb.org/validation/2017/FAQs#types>.

The following versions of software and data (see [references ⓘ](#)) were used in the production of this report:

MolProbity : 4.02b-467
Mogul : 1.8.5 (274361), CSD as541be (2020)
Xtrriage (Phenix) : 1.13
EDS : 2.36
buster-report : 1.1.7 (2018)
Percentile statistics : 20191225.v01 (using entries in the PDB archive December 25th 2019)
Refmac : 5.8.0158
CCP4 : 7.0.044 (Gargrove)
Ideal geometry (proteins) : Engh & Huber (2001)
Ideal geometry (DNA, RNA) : Parkinson et al. (1996)
Validation Pipeline (wwPDB-VP) : 2.36

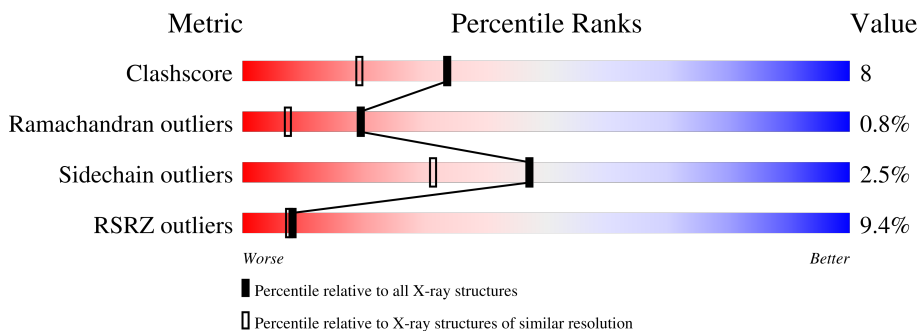
1 Overall quality at a glance

The following experimental techniques were used to determine the structure:

X-RAY DIFFRACTION

The reported resolution of this entry is 1.86 Å.

Percentile scores (ranging between 0-100) for global validation metrics of the entry are shown in the following graphic. The table shows the number of entries on which the scores are based.



Metric	Whole archive (#Entries)	Similar resolution (#Entries, resolution range(Å))
Clashscore	141614	2625 (1.86-1.86)
Ramachandran outliers	138981	2592 (1.86-1.86)
Sidechain outliers	138945	2592 (1.86-1.86)
RSRZ outliers	127900	2436 (1.86-1.86)

The table below summarises the geometric issues observed across the polymeric chains and their fit to the electron density. The red, orange, yellow and green segments of the lower bar indicate the fraction of residues that contain outliers for ≥ 3 , 2, 1 and 0 types of geometric quality criteria respectively. A grey segment represents the fraction of residues that are not modelled. The numeric value for each fraction is indicated below the corresponding segment, with a dot representing fractions $\leq 5\%$. The upper red bar (where present) indicates the fraction of residues that have poor fit to the electron density. The numeric value is given above the bar.

Mol	Chain	Length	Quality of chain
1	A	444	
1	B	444	

2 Entry composition [i](#)

There are 8 unique types of molecules in this entry. The entry contains 7403 atoms, of which 0 are hydrogens and 0 are deuteriums.

In the tables below, the ZeroOcc column contains the number of atoms modelled with zero occupancy, the AltConf column contains the number of residues with at least one atom in alternate conformation and the Trace column contains the number of residues modelled with at most 2 atoms.

- Molecule 1 is a protein called NITRIC OXIDE SYNTHASE.

Mol	Chain	Residues	Atoms					ZeroOcc	AltConf	Trace
			Total	C	N	O	S			
1	A	416	3302	2099	584	603	16	0	0	0
1	B	414	3291	2092	582	601	16	0	0	0

There are 2 discrepancies between the modelled and reference sequences:

Chain	Residue	Modelled	Actual	Comment	Reference
A	100	ARG	CYS	conflict	UNP P29473
B	100	ARG	CYS	conflict	UNP P29473

- Molecule 2 is ACETATE ION (three-letter code: ACT) (formula: C₂H₃O₂).



Mol	Chain	Residues	Atoms			ZeroOcc	AltConf
			Total	C	O		
2	A	1	4	2	2	0	0

Continued on next page...

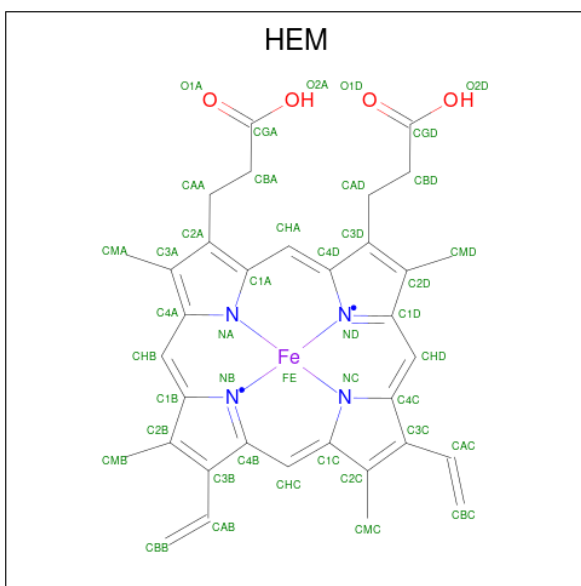
Continued from previous page...

Mol	Chain	Residues	Atoms	ZeroOcc	AltConf
2	A	1	Total C O 4 2 2	0	0
2	B	1	Total C O 4 2 2	0	0
2	B	1	Total C O 4 2 2	0	0

- Molecule 3 is ZINC ION (three-letter code: ZN) (formula: Zn).

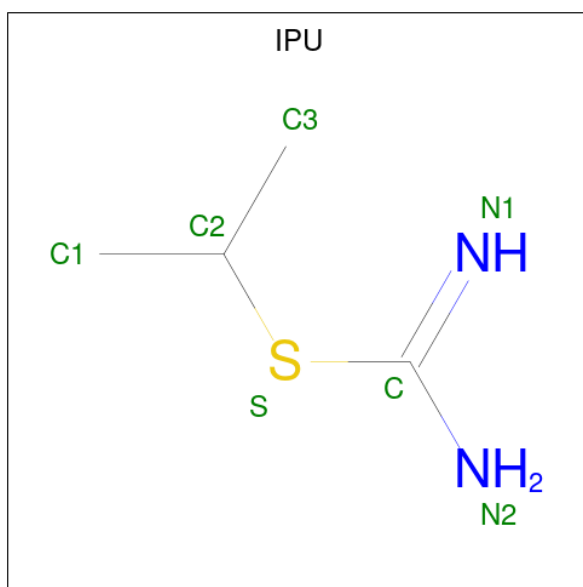
Mol	Chain	Residues	Atoms	ZeroOcc	AltConf
3	A	1	Total Zn 1 1	0	0

- Molecule 4 is PROTOPORPHYRIN IX CONTAINING FE (three-letter code: HEM) (formula: $C_{34}H_{32}FeN_4O_4$).



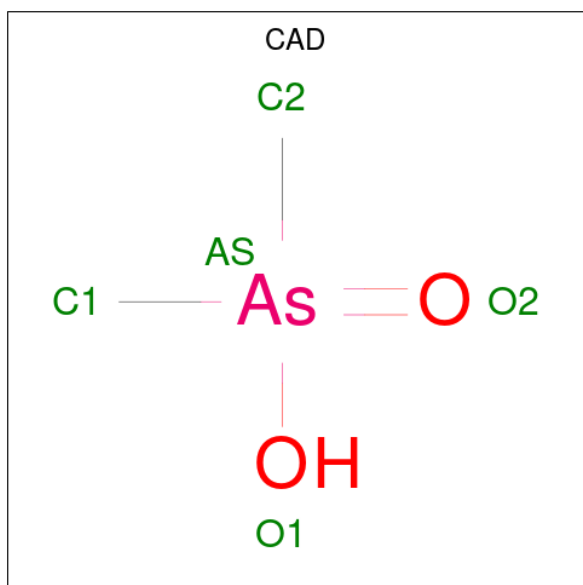
Mol	Chain	Residues	Atoms	ZeroOcc	AltConf
4	A	1	Total C Fe N O 43 34 1 4 4	0	0
4	B	1	Total C Fe N O 43 34 1 4 4	0	0

- Molecule 5 is S-ISOPROPYL-ISOTHIOUREA (three-letter code: IPU) (formula: $C_4H_{10}N_2S$).



Mol	Chain	Residues	Atoms				ZeroOcc	AltConf
5	A	1	Total	C	N	S	0	0
			7	4	2	1		
5	A	1	Total	C	N	S	0	0
			7	4	2	1		
5	B	1	Total	C	N	S	0	0
			7	4	2	1		
5	B	1	Total	C	N	S	0	0
			7	4	2	1		

- Molecule 6 is CACODYLIC ACID (three-letter code: CAD) (formula: $C_2H_7AsO_2$).



Mol	Chain	Residues	Atoms			ZeroOcc	AltConf
6	A	1	Total	As	C	0	0
			3	1	2		
6	B	1	Total	As	C	0	0
			3	1	2		

- Molecule 7 is GLYCEROL (three-letter code: GOL) (formula: C₃H₈O₃).



Mol	Chain	Residues	Atoms			ZeroOcc	AltConf
7	A	1	Total	C	O	0	0
			6	3	3		
7	A	1	Total	C	O	0	0
			6	3	3		
7	B	1	Total	C	O	0	0
			6	3	3		
7	B	1	Total	C	O	0	0
			6	3	3		

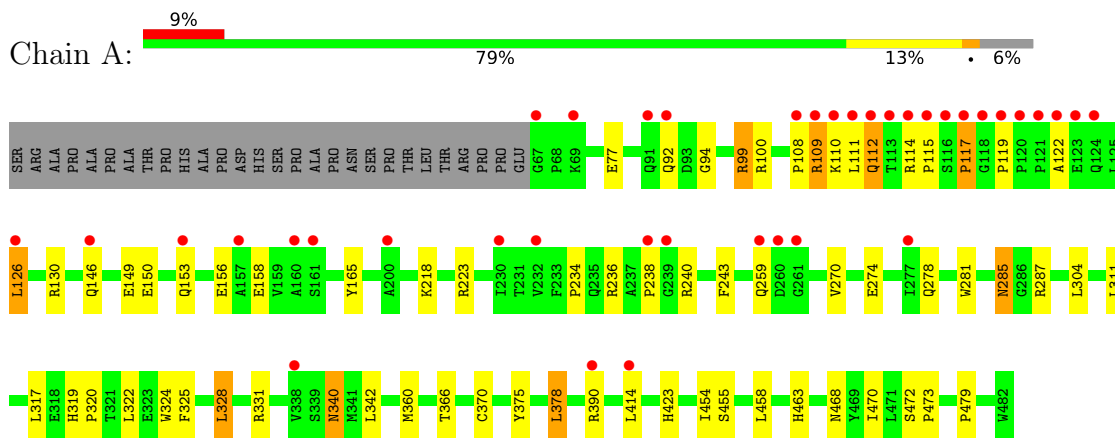
- Molecule 8 is water.

Mol	Chain	Residues	Atoms		ZeroOcc	AltConf
8	A	329	Total	O	0	0
			329	329		
8	B	320	Total	O	0	0
			320	320		

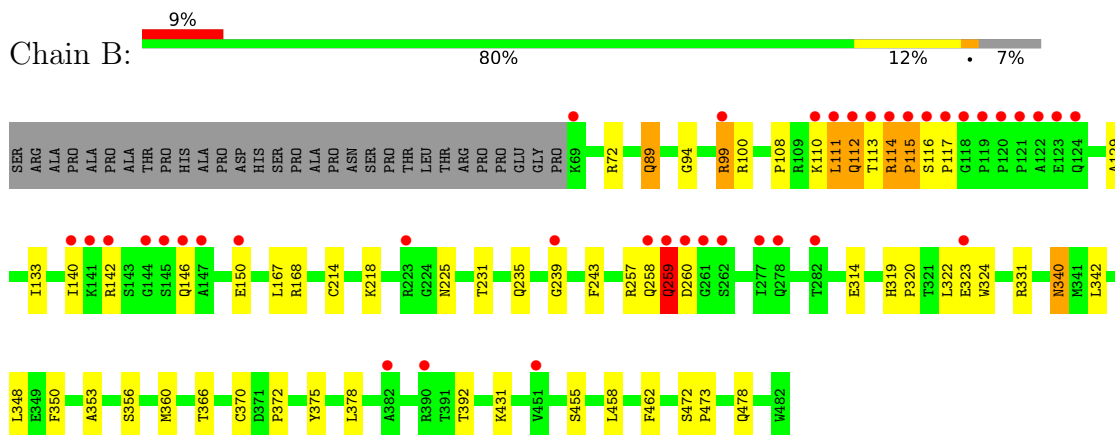
3 Residue-property plots

These plots are drawn for all protein, RNA, DNA and oligosaccharide chains in the entry. The first graphic for a chain summarises the proportions of the various outlier classes displayed in the second graphic. The second graphic shows the sequence view annotated by issues in geometry and electron density. Residues are color-coded according to the number of geometric quality criteria for which they contain at least one outlier: green = 0, yellow = 1, orange = 2 and red = 3 or more. A red dot above a residue indicates a poor fit to the electron density ($RSRZ > 2$). Stretches of 2 or more consecutive residues without any outlier are shown as a green connector. Residues present in the sample, but not in the model, are shown in grey.

• Molecule 1: NITRIC OXIDE SYNTHASE



• Molecule 1: NITRIC OXIDE SYNTHASE



4 Data and refinement statistics

Property	Value	Source
Space group	P 21 21 21	Depositor
Cell constants a, b, c, α , β , γ	58.03Å 106.79Å 156.46Å 90.00° 90.00° 90.00°	Depositor
Resolution (Å)	36.73 – 1.86 36.73 – 1.86	Depositor EDS
% Data completeness (in resolution range)	94.2 (36.73-1.86) 88.0 (36.73-1.86)	Depositor EDS
R_{merge}	0.06	Depositor
R_{sym}	(Not available)	Depositor
$\langle I/\sigma(I) \rangle$ ¹	1.06 (at 1.85Å)	Xtrriage
Refinement program	CNS	Depositor
R, R_{free}	0.215 , 0.235 0.211 , (Not available)	Depositor DCC
R_{free} test set	No test flags present.	wwPDB-VP
Wilson B-factor (Å ²)	26.1	Xtrriage
Anisotropy	0.337	Xtrriage
Bulk solvent k_{sol} (e/Å ³), B_{sol} (Å ²)	0.41 , 56.5	EDS
L-test for twinning ²	$\langle L \rangle = 0.49$, $\langle L^2 \rangle = 0.32$	Xtrriage
Estimated twinning fraction	No twinning to report.	Xtrriage
F_o, F_c correlation	0.94	EDS
Total number of atoms	7403	wwPDB-VP
Average B, all atoms (Å ²)	33.0	wwPDB-VP

Xtrriage's analysis on translational NCS is as follows: *The largest off-origin peak in the Patterson function is 4.85% of the height of the origin peak. No significant pseudotranslation is detected.*

¹Intensities estimated from amplitudes.

²Theoretical values of $\langle |L| \rangle$, $\langle L^2 \rangle$ for acentric reflections are 0.5, 0.333 respectively for untwinned datasets, and 0.375, 0.2 for perfectly twinned datasets.

5 Model quality [i](#)

5.1 Standard geometry [i](#)

Bond lengths and bond angles in the following residue types are not validated in this section: CAD, IPU, ZN, HEM, GOL, ACT

The Z score for a bond length (or angle) is the number of standard deviations the observed value is removed from the expected value. A bond length (or angle) with $|Z| > 5$ is considered an outlier worth inspection. RMSZ is the root-mean-square of all Z scores of the bond lengths (or angles).

Mol	Chain	Bond lengths		Bond angles	
		RMSZ	# Z >5	RMSZ	# Z >5
1	A	0.32	0/3397	0.59	1/4631 (0.0%)
1	B	0.31	0/3385	0.60	2/4614 (0.0%)
All	All	0.31	0/6782	0.60	3/9245 (0.0%)

There are no bond length outliers.

All (3) bond angle outliers are listed below:

Mol	Chain	Res	Type	Atoms	Z	Observed(°)	Ideal(°)
1	A	360	MET	N-CA-C	-6.00	94.81	111.00
1	B	360	MET	N-CA-C	-5.92	95.02	111.00
1	B	243	PHE	N-CA-C	-5.21	96.94	111.00

There are no chirality outliers.

There are no planarity outliers.

5.2 Too-close contacts [i](#)

In the following table, the Non-H and H(model) columns list the number of non-hydrogen atoms and hydrogen atoms in the chain respectively. The H(added) column lists the number of hydrogen atoms added and optimized by MolProbity. The Clashes column lists the number of clashes within the asymmetric unit, whereas Symm-Clashes lists symmetry-related clashes.

Mol	Chain	Non-H	H(model)	H(added)	Clashes	Symm-Clashes
1	A	3302	0	3215	55	0
1	B	3291	0	3205	58	0
2	A	8	0	6	1	0
2	B	8	0	6	0	0
3	A	1	0	0	0	0
4	A	43	0	30	1	0

Continued on next page...

Continued from previous page...

Mol	Chain	Non-H	H(model)	H(added)	Clashes	Symm-Clashes
4	B	43	0	30	0	0
5	A	14	0	15	2	0
5	B	14	0	15	2	0
6	A	3	0	0	0	0
6	B	3	0	0	1	0
7	A	12	0	12	2	0
7	B	12	0	11	1	0
8	A	329	0	0	3	0
8	B	320	0	0	3	0
All	All	7403	0	6545	113	0

The all-atom clashscore is defined as the number of clashes found per 1000 atoms (including hydrogen atoms). The all-atom clashscore for this structure is 8.

All (113) close contacts within the same asymmetric unit are listed below, sorted by their clash magnitude.

Atom-1	Atom-2	Interatomic distance (Å)	Clash overlap (Å)
1:A:115:PRO:HD3	1:A:479:PRO:HG2	1.35	1.04
1:A:287:ARG:HH21	7:A:1885:GOL:H12	1.21	1.03
1:B:114:ARG:HA	1:B:114:ARG:HH11	1.22	1.02
1:B:112:GLN:HG3	1:B:113:THR:H	1.25	1.01
1:A:99:ARG:HB2	1:A:99:ARG:HH11	1.27	0.97
1:B:99:ARG:HB2	1:B:99:ARG:HH11	1.40	0.85
1:A:115:PRO:O	1:A:117:PRO:HD3	1.78	0.84
1:B:108:PRO:HB3	1:B:111:LEU:HB2	1.61	0.82
1:B:114:ARG:HA	1:B:114:ARG:NH1	1.96	0.81
1:A:119:PRO:HG3	1:A:238:PRO:HB3	1.61	0.80
1:B:259:GLN:HG2	1:B:260:ASP:H	1.47	0.78
1:A:375:TYR:HA	7:A:1885:GOL:H11	1.64	0.78
1:A:111:LEU:HD12	1:A:111:LEU:H	1.49	0.76
1:A:115:PRO:HD3	1:A:479:PRO:CG	2.16	0.76
1:A:126:LEU:HD11	1:A:156:GLU:HG2	1.68	0.76
1:B:375:TYR:HA	7:B:2885:GOL:H11	1.70	0.73
1:A:119:PRO:HG3	1:A:238:PRO:CB	2.20	0.70
1:A:99:ARG:HB2	1:A:99:ARG:NH1	2.04	0.67
1:A:149:GLU:O	1:A:153:GLN:HG2	1.95	0.66
1:B:89:GLN:HE21	1:B:89:GLN:HA	1.60	0.66
1:A:126:LEU:O	1:A:130:ARG:HG3	1.96	0.66
1:B:146:GLN:O	1:B:150:GLU:HG3	1.97	0.64
1:A:146:GLN:O	1:A:150:GLU:HG3	1.98	0.64
2:A:1860:ACT:H2	4:A:1500:HEM:HMB3	1.82	0.61

Continued on next page...

Continued from previous page...

Atom-1	Atom-2	Interatomic distance (Å)	Clash overlap (Å)
1:A:94:GLY:O	1:A:110:LYS:HE2	2.02	0.60
1:B:94:GLY:HA2	1:B:111:LEU:HD21	1.82	0.60
1:B:112:GLN:HG3	1:B:113:THR:N	2.06	0.60
1:B:113:THR:HG21	1:B:342:LEU:HD13	1.83	0.59
1:B:324:TRP:HB2	6:B:2950:CAD:C1	2.32	0.59
1:B:114:ARG:HD3	1:B:115:PRO:HD2	1.85	0.58
1:B:110:LYS:C	1:B:112:GLN:H	2.08	0.57
1:A:463:HIS:HA	5:A:2840:IPU:H13	1.86	0.57
1:B:370:CYS:SG	1:B:378:LEU:HD13	2.45	0.57
1:B:114:ARG:HH11	1:B:115:PRO:HD3	1.70	0.56
1:A:259:GLN:CD	1:A:259:GLN:H	2.09	0.56
1:B:259:GLN:CG	1:B:260:ASP:H	2.16	0.56
1:A:370:CYS:SG	1:A:378:LEU:HD13	2.45	0.56
1:A:99:ARG:HH11	1:A:99:ARG:CB	2.11	0.56
1:B:72:ARG:HH11	1:B:72:ARG:HB3	1.71	0.54
1:B:319:HIS:CG	1:B:320:PRO:HD2	2.43	0.53
1:B:167:LEU:HG	1:B:348:LEU:HD12	1.91	0.53
1:B:378:LEU:HB2	8:B:2987:HOH:O	2.08	0.53
1:A:122:ALA:O	1:A:126:LEU:HB2	2.09	0.53
1:A:378:LEU:HB2	8:A:2883:HOH:O	2.09	0.53
1:B:110:LYS:O	1:B:112:GLN:N	2.40	0.52
1:B:259:GLN:HG2	1:B:260:ASP:N	2.23	0.52
1:A:281:TRP:HB2	1:A:304:LEU:HD21	1.92	0.52
1:B:340:ASN:HD22	1:B:340:ASN:H	1.57	0.52
1:A:108:PRO:O	1:A:110:LYS:N	2.43	0.52
1:B:114:ARG:HD3	1:B:115:PRO:CD	2.40	0.52
1:B:99:ARG:HH11	1:B:99:ARG:CB	2.18	0.51
1:A:114:ARG:HA	1:A:479:PRO:HG2	1.91	0.51
1:A:270:VAL:O	1:A:274:GLU:HG3	2.10	0.51
1:A:274:GLU:O	1:A:278:GLN:HG3	2.10	0.51
1:B:89:GLN:HE21	1:B:89:GLN:CA	2.22	0.50
1:B:366:THR:O	1:B:370:CYS:HB2	2.11	0.50
1:A:77:GLU:HG3	1:B:372:PRO:HG2	1.92	0.50
1:A:111:LEU:O	1:A:112:GLN:C	2.48	0.50
1:A:259:GLN:CD	1:A:259:GLN:N	2.65	0.50
1:A:92:GLN:HE22	1:A:472:SER:HB2	1.78	0.49
1:B:114:ARG:NH1	1:B:115:PRO:HD3	2.27	0.49
1:A:115:PRO:CD	1:A:479:PRO:HG2	2.26	0.48
1:B:108:PRO:CB	1:B:111:LEU:HB2	2.39	0.48
1:A:111:LEU:HG	1:A:470:ILE:HD13	1.96	0.48
1:A:322:LEU:HD13	1:A:324:TRP:CZ2	2.49	0.48

Continued on next page...

Continued from previous page...

Atom-1	Atom-2	Interatomic distance (Å)	Clash overlap (Å)
5:A:2840:IPU:N2	8:A:3152:HOH:O	0.66	0.48
1:B:146:GLN:HE21	1:B:150:GLU:CG	2.28	0.47
1:B:231:THR:O	1:B:353:ALA:HA	2.15	0.47
1:A:218:LYS:HG2	1:A:311:LEU:HD22	1.95	0.47
1:A:472:SER:HA	1:A:473:PRO:C	2.35	0.47
1:A:366:THR:HG21	1:A:454:ILE:HG23	1.98	0.46
1:B:392:THR:HG22	8:B:3267:HOH:O	2.16	0.46
1:A:109:ARG:O	1:A:110:LYS:HD2	2.16	0.46
1:A:455:SER:HB3	1:A:458:LEU:HD12	1.98	0.46
1:A:285:ASN:HD22	1:A:285:ASN:C	2.19	0.45
1:B:259:GLN:CG	1:B:260:ASP:N	2.80	0.45
1:B:340:ASN:HD22	1:B:340:ASN:N	2.13	0.45
1:B:462:PHE:CE2	5:B:1840:IPU:H11	2.52	0.45
1:A:319:HIS:CG	1:A:320:PRO:HD2	2.51	0.45
1:A:236:ARG:CB	1:A:236:ARG:HH11	2.30	0.44
1:A:111:LEU:H	1:A:111:LEU:CD1	2.26	0.44
1:A:325:PHE:O	1:A:328:LEU:HB2	2.17	0.44
1:A:317:LEU:HG	1:A:331:ARG:HA	1.99	0.44
1:B:214:CYS:O	1:B:218:LYS:HG3	2.17	0.44
1:A:234:PRO:HB2	1:A:243:PHE:CE1	2.52	0.44
1:B:140:ILE:HD12	1:B:142:ARG:HD2	1.99	0.44
1:B:72:ARG:HB3	1:B:72:ARG:NH1	2.32	0.44
1:B:168:ARG:HD3	1:B:168:ARG:HA	1.80	0.44
1:B:322:LEU:HD13	1:B:324:TRP:CZ2	2.52	0.44
1:B:455:SER:HB3	1:B:458:LEU:HD12	1.99	0.44
1:A:423:HIS:HB2	1:B:392:THR:HB	2.00	0.43
1:B:314:GLU:CD	1:B:331:ARG:HH21	2.22	0.43
1:A:366:THR:O	1:A:370:CYS:HB2	2.19	0.43
1:A:340:ASN:H	1:A:340:ASN:HD22	1.66	0.43
1:A:223:ARG:HG3	1:A:223:ARG:HH11	1.83	0.42
1:A:342:LEU:C	1:A:342:LEU:HD23	2.39	0.42
1:B:323:GLU:HG2	1:B:324:TRP:N	2.35	0.42
1:B:129:ALA:O	1:B:133:ILE:HG12	2.19	0.42
1:B:112:GLN:CG	1:B:113:THR:N	2.75	0.42
1:B:431:LYS:HG3	8:B:3022:HOH:O	2.20	0.42
1:B:472:SER:HA	1:B:473:PRO:C	2.40	0.42
1:B:116:SER:N	1:B:117:PRO:CD	2.82	0.42
1:B:117:PRO:HA	1:B:239:GLY:H	1.85	0.41
1:A:94:GLY:C	1:A:110:LYS:HE2	2.39	0.41
1:A:114:ARG:NH2	8:A:3067:HOH:O	2.53	0.41
1:B:356:SER:HA	5:B:2830:IPU:H11	2.02	0.41

Continued on next page...

Continued from previous page...

Atom-1	Atom-2	Interatomic distance (Å)	Clash overlap (Å)
1:A:390:ARG:HE	1:A:390:ARG:HB2	1.66	0.41
1:B:235:GLN:HB3	1:B:350:PHE:CE1	2.56	0.40
1:B:112:GLN:NE2	1:B:478:GLN:HA	2.35	0.40
1:A:158:GLU:HG2	1:A:165:TYR:HA	2.04	0.40
1:A:340:ASN:HD22	1:A:340:ASN:N	2.19	0.40
1:B:258:GLN:O	1:B:259:GLN:C	2.60	0.40
1:B:340:ASN:H	1:B:340:ASN:ND2	2.18	0.40

There are no symmetry-related clashes.

5.3 Torsion angles [i](#)

5.3.1 Protein backbone [i](#)

In the following table, the Percentiles column shows the percent Ramachandran outliers of the chain as a percentile score with respect to all X-ray entries followed by that with respect to entries of similar resolution.

The Analysed column shows the number of residues for which the backbone conformation was analysed, and the total number of residues.

Mol	Chain	Analysed	Favoured	Allowed	Outliers	Percentiles	
1	A	414/444 (93%)	395 (95%)	16 (4%)	3 (1%)	22	9
1	B	412/444 (93%)	391 (95%)	17 (4%)	4 (1%)	15	5
All	All	826/888 (93%)	786 (95%)	33 (4%)	7 (1%)	19	7

All (7) Ramachandran outliers are listed below:

Mol	Chain	Res	Type
1	B	111	LEU
1	B	259	GLN
1	A	109	ARG
1	A	112	GLN
1	A	117	PRO
1	B	112	GLN
1	B	115	PRO

5.3.2 Protein sidechains

In the following table, the Percentiles column shows the percent sidechain outliers of the chain as a percentile score with respect to all X-ray entries followed by that with respect to entries of similar resolution.

The Analysed column shows the number of residues for which the sidechain conformation was analysed, and the total number of residues.

Mol	Chain	Analysed	Rotameric	Outliers	Percentiles	
1	A	354/377 (94%)	344 (97%)	10 (3%)	43	27
1	B	353/377 (94%)	345 (98%)	8 (2%)	50	34
All	All	707/754 (94%)	689 (98%)	18 (2%)	47	31

All (18) residues with a non-rotameric sidechain are listed below:

Mol	Chain	Res	Type
1	A	99	ARG
1	A	100	ARG
1	A	126	LEU
1	A	240	ARG
1	A	285	ASN
1	A	328	LEU
1	A	340	ASN
1	A	378	LEU
1	A	414	LEU
1	A	468	ASN
1	B	89	GLN
1	B	99	ARG
1	B	100	ARG
1	B	114	ARG
1	B	225	ASN
1	B	257	ARG
1	B	259	GLN
1	B	340	ASN

Sometimes sidechains can be flipped to improve hydrogen bonding and reduce clashes. All (20) such sidechains are listed below:

Mol	Chain	Res	Type
1	A	112	GLN
1	A	124	GLN
1	A	191	GLN
1	A	278	GLN

Continued on next page...

Continued from previous page...

Mol	Chain	Res	Type
1	A	279	HIS
1	A	285	ASN
1	A	340	ASN
1	A	376	ASN
1	A	413	GLN
1	A	468	ASN
1	B	89	GLN
1	B	112	GLN
1	B	146	GLN
1	B	191	GLN
1	B	222	ASN
1	B	225	ASN
1	B	278	GLN
1	B	279	HIS
1	B	340	ASN
1	B	405	ASN

5.3.3 RNA [i](#)

There are no RNA molecules in this entry.

5.4 Non-standard residues in protein, DNA, RNA chains [i](#)

There are no non-standard protein/DNA/RNA residues in this entry.

5.5 Carbohydrates [i](#)

There are no monosaccharides in this entry.

5.6 Ligand geometry [i](#)

Of 17 ligands modelled in this entry, 1 is monoatomic - leaving 16 for Mogul analysis.

In the following table, the Counts columns list the number of bonds (or angles) for which Mogul statistics could be retrieved, the number of bonds (or angles) that are observed in the model and the number of bonds (or angles) that are defined in the Chemical Component Dictionary. The Link column lists molecule types, if any, to which the group is linked. The Z score for a bond length (or angle) is the number of standard deviations the observed value is removed from the expected value. A bond length (or angle) with $|Z| > 2$ is considered an outlier worth inspection. RMSZ is the root-mean-square of all Z scores of the bond lengths (or angles).

Mol	Type	Chain	Res	Link	Bond lengths			Bond angles		
					Counts	RMSZ	# Z > 2	Counts	RMSZ	# Z > 2
2	ACT	A	1850	-	3,3,3	0.92	0	3,3,3	0.79	0
6	CAD	A	1950	1	0,2,4	-	-	0,1,6	-	-
7	GOL	B	1880	-	5,5,5	0.26	0	5,5,5	0.27	0
2	ACT	B	2850	-	3,3,3	0.93	0	3,3,3	0.78	0
5	IPU	A	2840	-	6,6,6	1.39	1 (16%)	5,7,7	0.95	0
5	IPU	B	2830	-	6,6,6	1.67	1 (16%)	5,7,7	0.62	0
6	CAD	B	2950	1	0,2,4	-	-	0,1,6	-	-
7	GOL	A	2880	-	5,5,5	0.28	0	5,5,5	0.28	0
4	HEM	A	1500	1	41,50,50	1.28	5 (12%)	45,82,82	1.08	1 (2%)
2	ACT	A	1860	-	3,3,3	0.86	0	3,3,3	0.79	0
5	IPU	B	1840	-	6,6,6	1.85	1 (16%)	5,7,7	0.77	0
5	IPU	A	1830	-	6,6,6	1.62	1 (16%)	5,7,7	0.64	0
7	GOL	A	1885	-	5,5,5	0.26	0	5,5,5	0.28	0
2	ACT	B	2860	-	3,3,3	0.91	0	3,3,3	0.78	0
7	GOL	B	2885	-	5,5,5	0.22	0	5,5,5	0.23	0
4	HEM	B	2500	1	41,50,50	1.22	6 (14%)	45,82,82	1.19	1 (2%)

In the following table, the Chirals column lists the number of chiral outliers, the number of chiral centers analysed, the number of these observed in the model and the number defined in the Chemical Component Dictionary. Similar counts are reported in the Torsion and Rings columns. '-' means no outliers of that kind were identified.

Mol	Type	Chain	Res	Link	Chirals	Torsions	Rings
7	GOL	B	1880	-	-	2/4/4/4	-
5	IPU	A	2840	-	-	2/2/4/4	-
5	IPU	B	2830	-	-	0/2/4/4	-
4	HEM	A	1500	1	-	2/12/54/54	-
5	IPU	B	1840	-	-	2/2/4/4	-
7	GOL	A	1885	-	-	0/4/4/4	-
5	IPU	A	1830	-	-	0/2/4/4	-
7	GOL	A	2880	-	-	1/4/4/4	-
7	GOL	B	2885	-	-	1/4/4/4	-
4	HEM	B	2500	1	-	2/12/54/54	-

All (15) bond length outliers are listed below:

Mol	Chain	Res	Type	Atoms	Z	Observed(Å)	Ideal(Å)
5	B	1840	IPU	C-N2	4.16	1.43	1.34
5	B	2830	IPU	C-N2	3.46	1.41	1.34
5	A	1830	IPU	C-N2	3.43	1.41	1.34

Continued on next page...

Continued from previous page...

Mol	Chain	Res	Type	Atoms	Z	Observed(Å)	Ideal(Å)
5	A	2840	IPU	C-N2	3.22	1.41	1.34
4	A	1500	HEM	C3C-CAC	-3.10	1.41	1.47
4	A	1500	HEM	C4A-NA	2.80	1.41	1.36
4	B	2500	HEM	C3C-CAC	-2.75	1.42	1.47
4	A	1500	HEM	CAB-C3B	-2.44	1.40	1.47
4	A	1500	HEM	C3C-C2C	-2.40	1.37	1.40
4	B	2500	HEM	C3C-C2C	-2.34	1.37	1.40
4	B	2500	HEM	CHB-C1B	2.18	1.40	1.35
4	B	2500	HEM	C1A-NA	2.11	1.40	1.36
4	A	1500	HEM	CHB-C1B	2.09	1.40	1.35
4	B	2500	HEM	CHA-C4D	2.06	1.40	1.35
4	B	2500	HEM	CAB-C3B	-2.04	1.41	1.47

All (2) bond angle outliers are listed below:

Mol	Chain	Res	Type	Atoms	Z	Observed(°)	Ideal(°)
4	B	2500	HEM	C4B-CHC-C1C	2.95	126.45	122.56
4	A	1500	HEM	C2C-C3C-C4C	-2.43	105.20	106.90

There are no chirality outliers.

All (12) torsion outliers are listed below:

Mol	Chain	Res	Type	Atoms
5	B	1840	IPU	C1-C2-S-C
5	B	1840	IPU	C3-C2-S-C
7	B	1880	GOL	O1-C1-C2-C3
5	A	2840	IPU	C1-C2-S-C
5	A	2840	IPU	C3-C2-S-C
7	B	1880	GOL	O1-C1-C2-O2
4	B	2500	HEM	CAA-CBA-CGA-O2A
4	B	2500	HEM	CAA-CBA-CGA-O1A
4	A	1500	HEM	CAA-CBA-CGA-O2A
7	B	2885	GOL	O1-C1-C2-C3
4	A	1500	HEM	CAA-CBA-CGA-O1A
7	A	2880	GOL	O1-C1-C2-O2

There are no ring outliers.

8 monomers are involved in 9 short contacts:

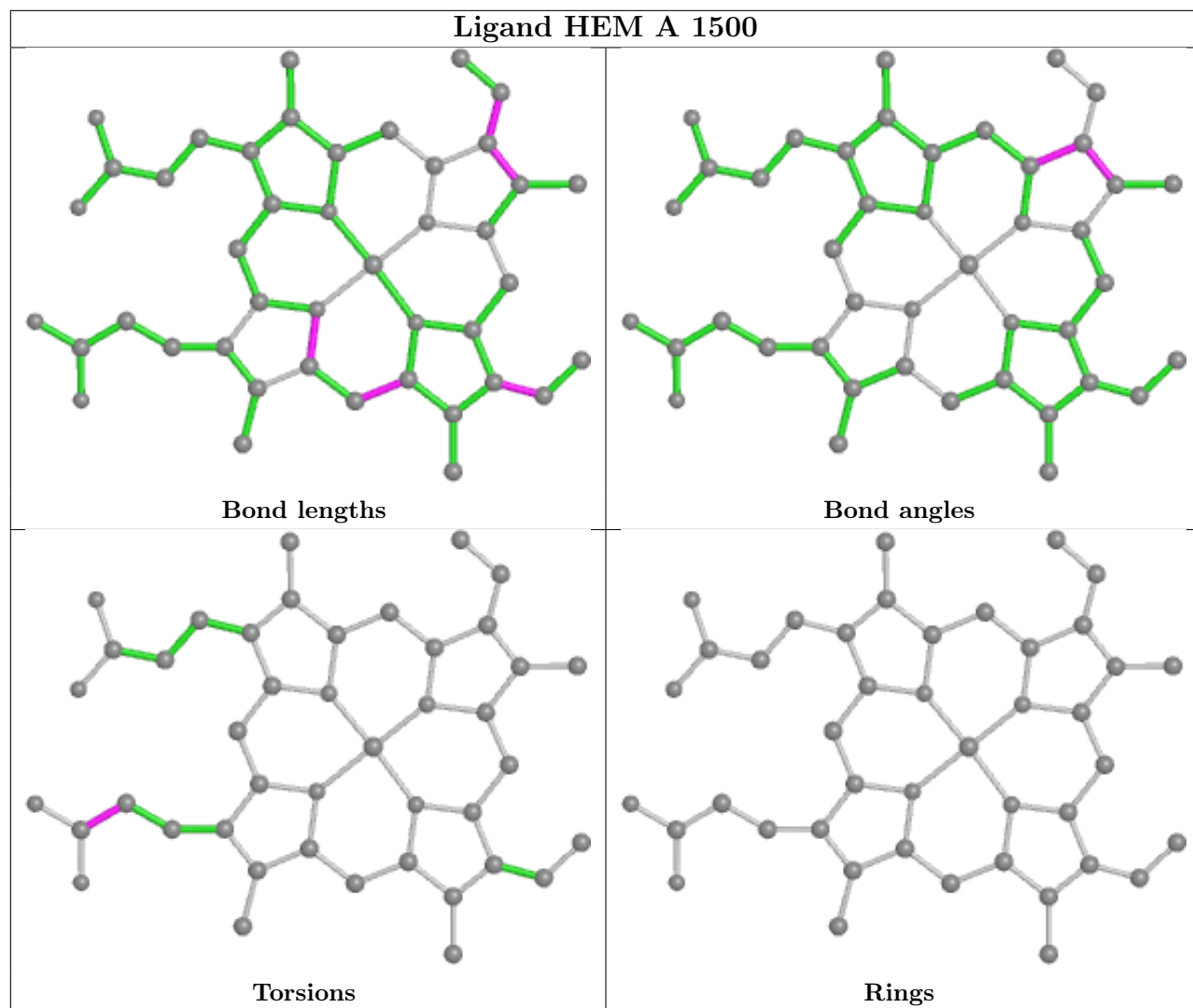
Mol	Chain	Res	Type	Clashes	Symm-Clashes
5	A	2840	IPU	2	0

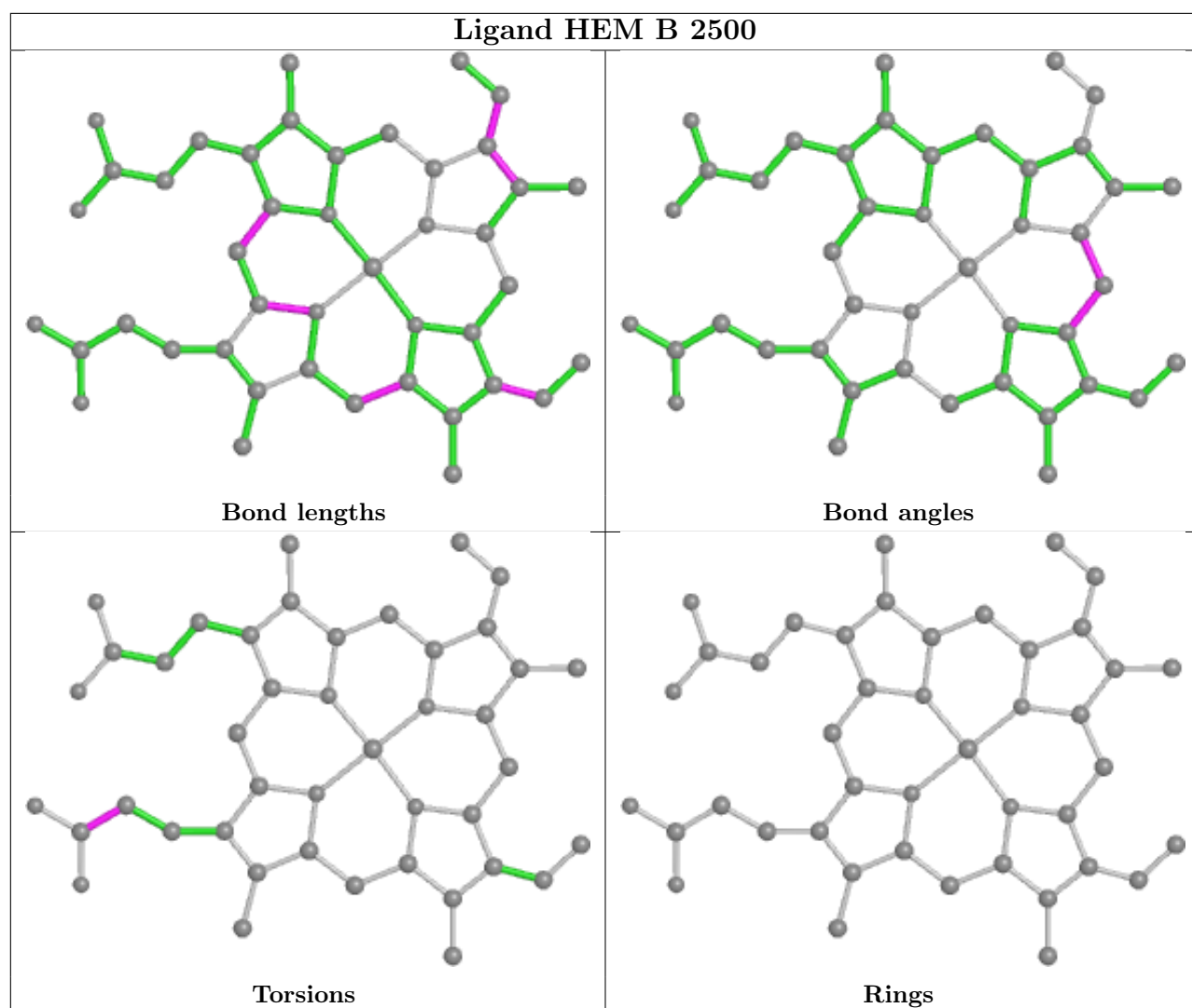
Continued on next page...

Continued from previous page...

Mol	Chain	Res	Type	Clashes	Symm-Clashes
5	B	2830	IPU	1	0
6	B	2950	CAD	1	0
4	A	1500	HEM	1	0
2	A	1860	ACT	1	0
5	B	1840	IPU	1	0
7	A	1885	GOL	2	0
7	B	2885	GOL	1	0

The following is a two-dimensional graphical depiction of Mogul quality analysis of bond lengths, bond angles, torsion angles, and ring geometry for all instances of the Ligand of Interest. In addition, ligands with molecular weight > 250 and outliers as shown on the validation Tables will also be included. For torsion angles, if less than 5% of the Mogul distribution of torsion angles is within 10 degrees of the torsion angle in question, then that torsion angle is considered an outlier. Any bond that is central to one or more torsion angles identified as an outlier by Mogul will be highlighted in the graph. For rings, the root-mean-square deviation (RMSD) between the ring in question and similar rings identified by Mogul is calculated over all ring torsion angles. If the average RMSD is greater than 60 degrees and the minimal RMSD between the ring in question and any Mogul-identified rings is also greater than 60 degrees, then that ring is considered an outlier. The outliers are highlighted in purple. The color gray indicates Mogul did not find sufficient equivalents in the CSD to analyse the geometry.





5.7 Other polymers [i](#)

There are no such residues in this entry.

5.8 Polymer linkage issues [i](#)

There are no chain breaks in this entry.

6 Fit of model and data

6.1 Protein, DNA and RNA chains

In the following table, the column labelled ‘#RSRZ > 2’ contains the number (and percentage) of RSRZ outliers, followed by percent RSRZ outliers for the chain as percentile scores relative to all X-ray entries and entries of similar resolution. The OWAB column contains the minimum, median, 95th percentile and maximum values of the occupancy-weighted average B-factor per residue. The column labelled ‘Q < 0.9’ lists the number of (and percentage) of residues with an average occupancy less than 0.9.

Mol	Chain	Analysed	<RSRZ>	#RSRZ>2	OWAB(Å ²)	Q<0.9
1	A	416/444 (93%)	0.64	39 (9%) 8 8	20, 30, 49, 68	0
1	B	414/444 (93%)	0.62	39 (9%) 8 8	21, 32, 51, 67	0
All	All	830/888 (93%)	0.63	78 (9%) 8 8	20, 31, 51, 68	0

All (78) RSRZ outliers are listed below:

Mol	Chain	Res	Type	RSRZ
1	A	119	PRO	12.2
1	B	119	PRO	10.6
1	A	113	THR	10.5
1	A	117	PRO	10.4
1	B	117	PRO	10.0
1	A	115	PRO	8.7
1	B	113	THR	8.6
1	B	111	LEU	8.5
1	A	239	GLY	7.8
1	B	115	PRO	7.7
1	B	118	GLY	7.6
1	B	114	ARG	7.4
1	A	111	LEU	7.3
1	A	121	PRO	7.3
1	A	118	GLY	7.0
1	B	116	SER	6.6
1	B	110	LYS	6.4
1	A	116	SER	6.3
1	A	259	GLN	6.3
1	A	114	ARG	6.1
1	A	109	ARG	5.6
1	A	123	GLU	5.6
1	B	261	GLY	5.4
1	B	121	PRO	5.3

Continued on next page...

Continued from previous page...

Mol	Chain	Res	Type	RSRZ
1	B	112	GLN	4.9
1	A	112	GLN	4.9
1	B	259	GLN	4.9
1	A	120	PRO	4.8
1	B	390	ARG	4.8
1	A	122	ALA	4.5
1	A	110	LYS	4.5
1	A	238	PRO	4.5
1	A	124	GLN	4.3
1	B	260	ASP	4.2
1	B	120	PRO	4.1
1	B	69	LYS	4.0
1	A	69	LYS	3.9
1	A	146	GLN	3.5
1	A	91	GLN	3.4
1	A	260	ASP	3.4
1	A	153	GLN	3.3
1	B	145	SER	3.3
1	B	141	LYS	3.3
1	A	160	ALA	3.2
1	B	146	GLN	3.2
1	B	142	ARG	3.1
1	B	239	GLY	3.1
1	B	223	ARG	3.1
1	A	157	ALA	3.1
1	A	126	LEU	3.0
1	A	390	ARG	2.9
1	B	123	GLU	2.9
1	B	258	GLN	2.9
1	A	200	ALA	2.9
1	A	261	GLY	2.7
1	A	277	ILE	2.6
1	B	140	ILE	2.6
1	B	122	ALA	2.6
1	B	277	ILE	2.5
1	B	278	GLN	2.5
1	B	382	ALA	2.4
1	A	67	GLY	2.4
1	A	230	ILE	2.4
1	B	147	ALA	2.3
1	A	338	VAL	2.3
1	A	161	SER	2.3

Continued on next page...

Continued from previous page...

Mol	Chain	Res	Type	RSRZ
1	A	414	LEU	2.3
1	B	262	SER	2.3
1	B	144	GLY	2.3
1	B	282	THR	2.3
1	B	150	GLU	2.2
1	B	323	GLU	2.2
1	B	451	VAL	2.2
1	A	108	PRO	2.1
1	B	124	GLN	2.1
1	A	232	VAL	2.1
1	B	99	ARG	2.1
1	A	92	GLN	2.0

6.2 Non-standard residues in protein, DNA, RNA chains [i](#)

There are no non-standard protein/DNA/RNA residues in this entry.

6.3 Carbohydrates [i](#)

There are no monosaccharides in this entry.

6.4 Ligands [i](#)

In the following table, the Atoms column lists the number of modelled atoms in the group and the number defined in the chemical component dictionary. The B-factors column lists the minimum, median, 95th percentile and maximum values of B factors of atoms in the group. The column labelled 'Q< 0.9' lists the number of atoms with occupancy less than 0.9.

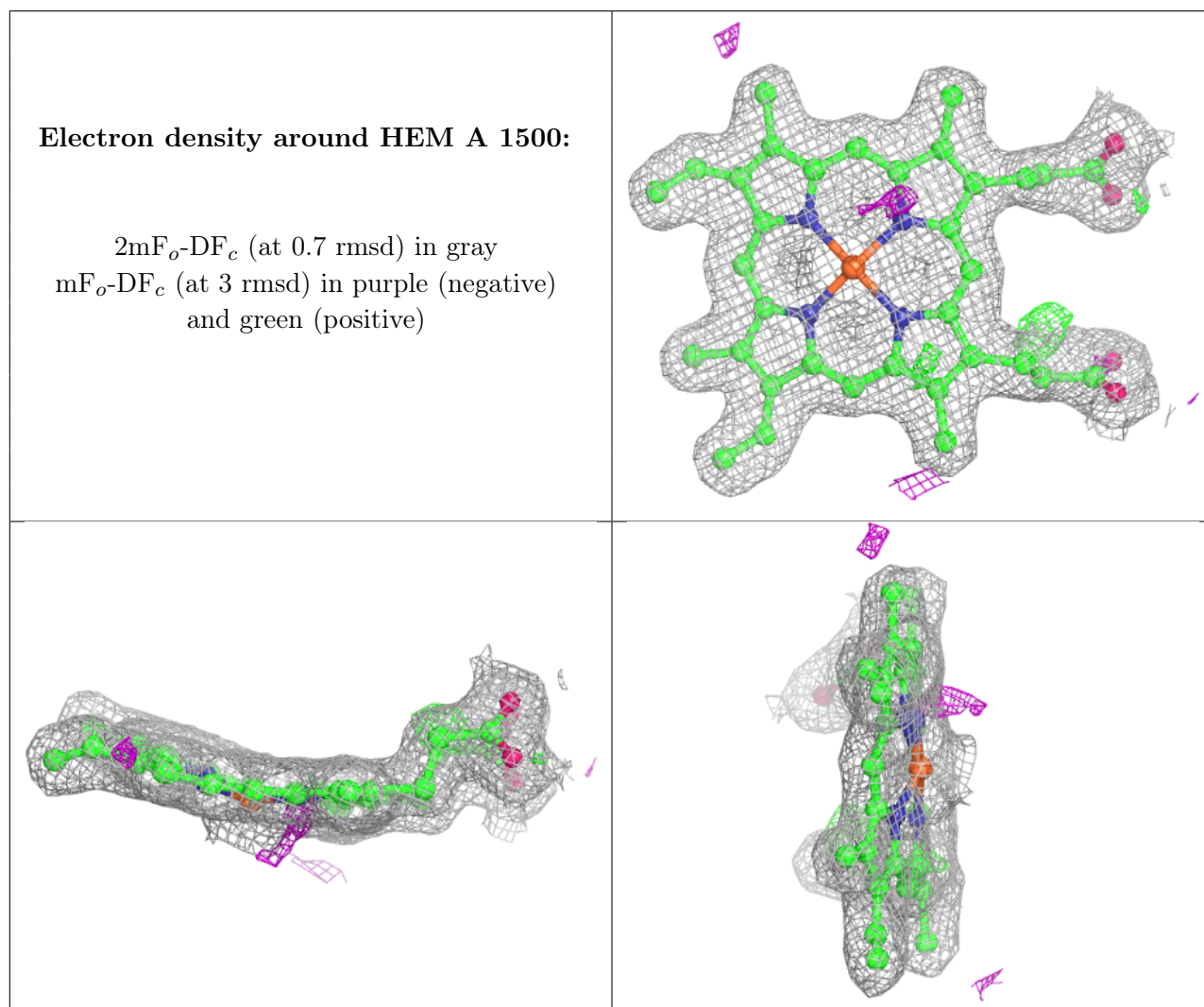
Mol	Type	Chain	Res	Atoms	RSCC	RSR	B-factors(Å ²)	Q<0.9
7	GOL	B	2885	6/6	0.81	0.33	58,59,59,59	0
5	IPU	A	2840	7/7	0.85	0.23	35,35,36,36	7
7	GOL	A	1885	6/6	0.87	0.23	58,58,58,58	0
7	GOL	A	2880	6/6	0.88	0.22	53,53,53,53	6
7	GOL	B	1880	6/6	0.92	0.18	47,47,47,48	6
5	IPU	B	1840	7/7	0.93	0.19	35,35,35,36	7
2	ACT	B	2860	4/4	0.94	0.13	33,34,34,35	0
6	CAD	A	1950	3/5	0.94	0.17	42,42,43,49	0
2	ACT	B	2850	4/4	0.96	0.14	30,30,30,30	0
2	ACT	A	1860	4/4	0.97	0.07	35,37,37,38	0
2	ACT	A	1850	4/4	0.97	0.09	28,29,29,29	0

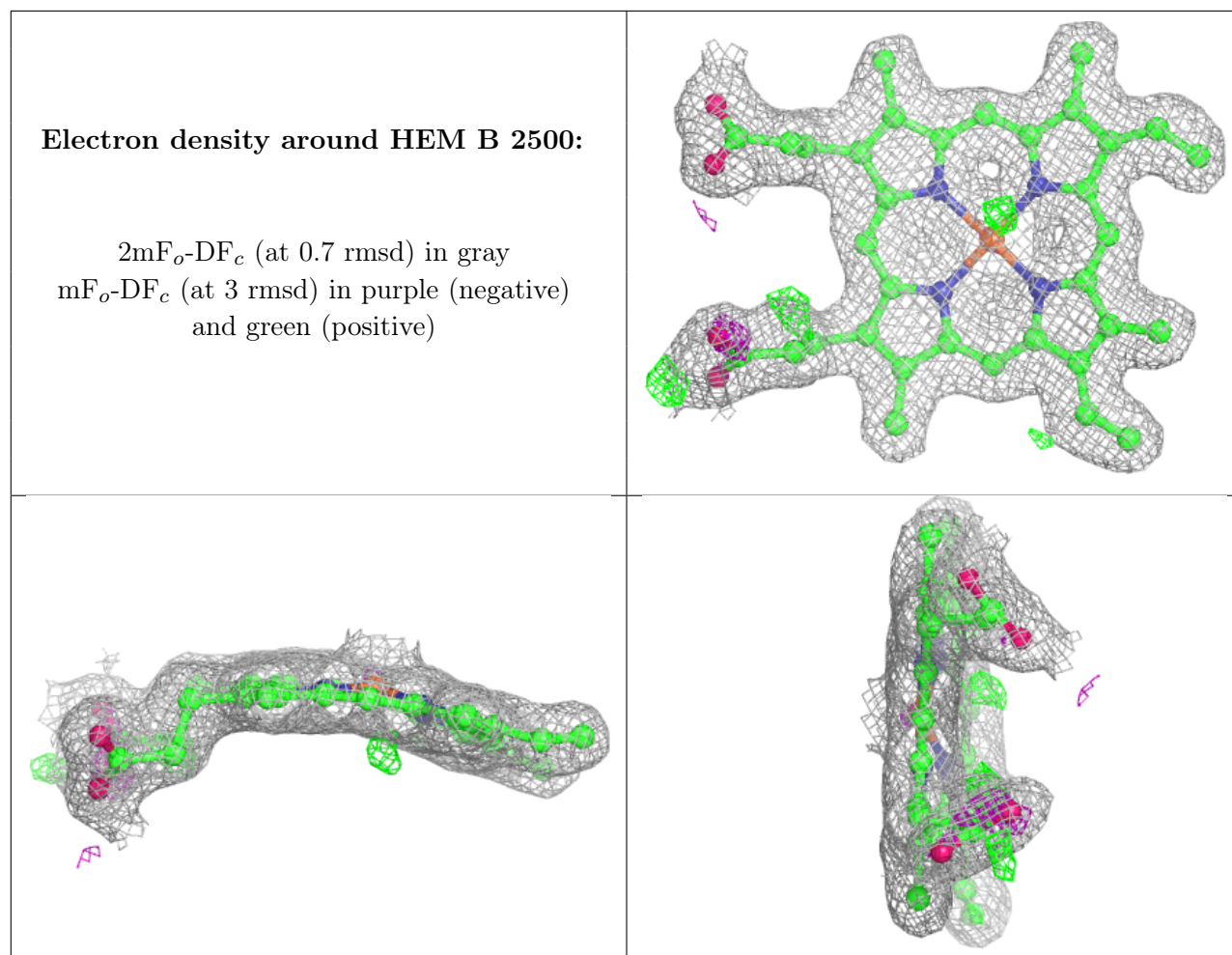
Continued on next page...

Continued from previous page...

Mol	Type	Chain	Res	Atoms	RSCC	RSR	B-factors(\AA^2)	Q<0.9
4	HEM	A	1500	43/43	0.98	0.14	21,23,28,31	0
4	HEM	B	2500	43/43	0.98	0.13	21,23,31,33	0
5	IPU	B	2830	7/7	0.98	0.13	23,23,24,24	0
5	IPU	A	1830	7/7	0.98	0.18	22,22,23,24	0
6	CAD	B	2950	3/5	0.99	0.07	42,42,43,44	0
3	ZN	A	900	1/1	1.00	0.04	29,29,29,29	0

The following is a graphical depiction of the model fit to experimental electron density of all instances of the Ligand of Interest. In addition, ligands with molecular weight > 250 and outliers as shown on the geometry validation Tables will also be included. Each fit is shown from different orientation to approximate a three-dimensional view.





6.5 Other polymers [i](#)

There are no such residues in this entry.