



Full wwPDB X-ray Structure Validation Report ⓘ

Aug 9, 2020 – 01:58 PM BST

PDB ID : 5EGH
Title : Structure of ENPP6, a choline-specific glycerophosphodiester-phosphodiesterase in complex with phosphocholine
Authors : Morita, J.; Kano, K.; Kato, K.; Takita, H.; Ishitani, R.; Nishimasu, H.; Nureki, O.; Aoki, J.
Deposited on : 2015-10-27
Resolution : 1.80 Å(reported)

This is a Full wwPDB X-ray Structure Validation Report for a publicly released PDB entry.

We welcome your comments at validation@mail.wwpdb.org

A user guide is available at

<https://www.wwpdb.org/validation/2017/XrayValidationReportHelp>

with specific help available everywhere you see the ⓘ symbol.

The following versions of software and data (see [references ⓘ](#)) were used in the production of this report:

MolProbity : 4.02b-467
Mogul : 1.8.5 (274361), CSD as541be (2020)
Xtriage (Phenix) : 1.13
EDS : 2.13.1
Percentile statistics : 20191225.v01 (using entries in the PDB archive December 25th 2019)
Refmac : 5.8.0158
CCP4 : 7.0.044 (Gargrove)
Ideal geometry (proteins) : Engh & Huber (2001)
Ideal geometry (DNA, RNA) : Parkinson et al. (1996)
Validation Pipeline (wwPDB-VP) : 2.13.1

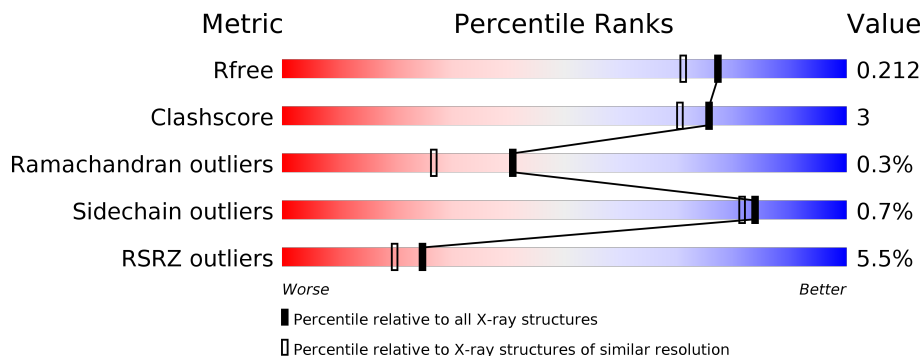
1 Overall quality at a glance i

The following experimental techniques were used to determine the structure:

X-RAY DIFFRACTION

The reported resolution of this entry is 1.80 Å.

Percentile scores (ranging between 0-100) for global validation metrics of the entry are shown in the following graphic. The table shows the number of entries on which the scores are based.



Metric	Whole archive (#Entries)	Similar resolution (#Entries, resolution range(Å))
R_{free}	130704	5950 (1.80-1.80)
Clashscore	141614	6793 (1.80-1.80)
Ramachandran outliers	138981	6697 (1.80-1.80)
Sidechain outliers	138945	6696 (1.80-1.80)
RSRZ outliers	127900	5850 (1.80-1.80)

The table below summarises the geometric issues observed across the polymeric chains and their fit to the electron density. The red, orange, yellow and green segments on the lower bar indicate the fraction of residues that contain outliers for ≥ 3 , 2, 1 and 0 types of geometric quality criteria respectively. A grey segment represents the fraction of residues that are not modelled. The numeric value for each fraction is indicated below the corresponding segment, with a dot representing fractions $\leq 5\%$. The upper red bar (where present) indicates the fraction of residues that have poor fit to the electron density. The numeric value is given above the bar.

Mol	Chain	Length	Quality of chain
1	A	429	<div style="display: flex; align-items: center;"> <div style="width: 10px; height: 10px; background-color: red; margin-right: 5px;"></div> <div style="width: 100%; height: 20px; position: relative;"> <div style="width: 85%; height: 100%; background-color: green;"></div> <div style="width: 7%; height: 100%; background-color: yellow;"></div> <div style="width: 9%; height: 100%; background-color: grey;"></div> </div> </div> <p style="text-align: center;">85% 7% 9%</p>
1	B	429	<div style="display: flex; align-items: center;"> <div style="width: 9%; height: 10px; background-color: red; margin-right: 5px;"></div> <div style="width: 100%; height: 20px; position: relative;"> <div style="width: 83%; height: 100%; background-color: green;"></div> <div style="width: 8%; height: 100%; background-color: yellow;"></div> <div style="width: 8%; height: 100%; background-color: grey;"></div> </div> </div> <p style="text-align: center;">9% 83% 8% 8%</p>
2	C	2	<div style="width: 100%; height: 20px; background-color: yellow;"></div> <p style="text-align: center;">100%</p>
2	E	2	<div style="width: 50%; height: 20px; background-color: green;"></div> <div style="width: 50%; height: 20px; background-color: yellow;"></div> <p style="text-align: center;">50% 50%</p>
2	G	2	<div style="width: 100%; height: 20px; background-color: green;"></div> <p style="text-align: center;">100%</p>
3	D	3	<div style="width: 67%; height: 20px; background-color: green;"></div> <div style="width: 33%; height: 20px; background-color: orange;"></div> <p style="text-align: center;">67% 33%</p>

Continued on next page...

Continued from previous page...

Mol	Chain	Length	Quality of chain
3	F	3	 33% 33% 33%

2 Entry composition i

There are 8 unique types of molecules in this entry. The entry contains 7187 atoms, of which 0 are hydrogens and 0 are deuteriums.

In the tables below, the ZeroOcc column contains the number of atoms modelled with zero occupancy, the AltConf column contains the number of residues with at least one atom in alternate conformation and the Trace column contains the number of residues modelled with at most 2 atoms.

- Molecule 1 is a protein called Ectonucleotide pyrophosphatase/phosphodiesterase family member 6.

Mol	Chain	Residues	Atoms					ZeroOcc	AltConf	Trace
			Total	C	N	O	S			
1	A	392	3220	2069	550	582	19	0	6	0
1	B	393	3219	2068	551	581	19	0	4	0

There are 20 discrepancies between the modelled and reference sequences:

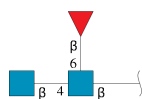
Chain	Residue	Modelled	Actual	Comment	Reference
A	393	ALA	CYS	engineered mutation	UNP Q8BGN3
A	412	SER	CYS	engineered mutation	UNP Q8BGN3
A	422	SER	-	expression tag	UNP Q8BGN3
A	423	ARG	-	expression tag	UNP Q8BGN3
A	424	GLU	-	expression tag	UNP Q8BGN3
A	425	ASN	-	expression tag	UNP Q8BGN3
A	426	LEU	-	expression tag	UNP Q8BGN3
A	427	TYR	-	expression tag	UNP Q8BGN3
A	428	PHE	-	expression tag	UNP Q8BGN3
A	429	GLN	-	expression tag	UNP Q8BGN3
B	393	ALA	CYS	engineered mutation	UNP Q8BGN3
B	412	SER	CYS	engineered mutation	UNP Q8BGN3
B	422	SER	-	expression tag	UNP Q8BGN3
B	423	ARG	-	expression tag	UNP Q8BGN3
B	424	GLU	-	expression tag	UNP Q8BGN3
B	425	ASN	-	expression tag	UNP Q8BGN3
B	426	LEU	-	expression tag	UNP Q8BGN3
B	427	TYR	-	expression tag	UNP Q8BGN3
B	428	PHE	-	expression tag	UNP Q8BGN3
B	429	GLN	-	expression tag	UNP Q8BGN3

- Molecule 2 is an oligosaccharide called 2-acetamido-2-deoxy-beta-D-glucopyranose-(1-4)-2-acetamido-2-deoxy-beta-D-glucopyranose.



Mol	Chain	Residues	Atoms				ZeroOcc	AltConf	Trace
2	C	2	Total	C	N	O	0	0	0
			28	16	2	10			
2	E	2	Total	C	N	O	0	0	0
			28	16	2	10			
2	G	2	Total	C	N	O	0	0	0
			28	16	2	10			

- Molecule 3 is an oligosaccharide called 2-acetamido-2-deoxy-beta-D-glucopyranose-(1-4)-[beta-L-fucopyranose-(1-6)]2-acetamido-2-deoxy-beta-D-glucopyranose.



Mol	Chain	Residues	Atoms				ZeroOcc	AltConf	Trace
3	D	3	Total	C	N	O	0	0	0
			38	22	2	14			
3	F	3	Total	C	N	O	0	0	0
			38	22	2	14			

- Molecule 4 is ZINC ION (three-letter code: ZN) (formula: Zn).

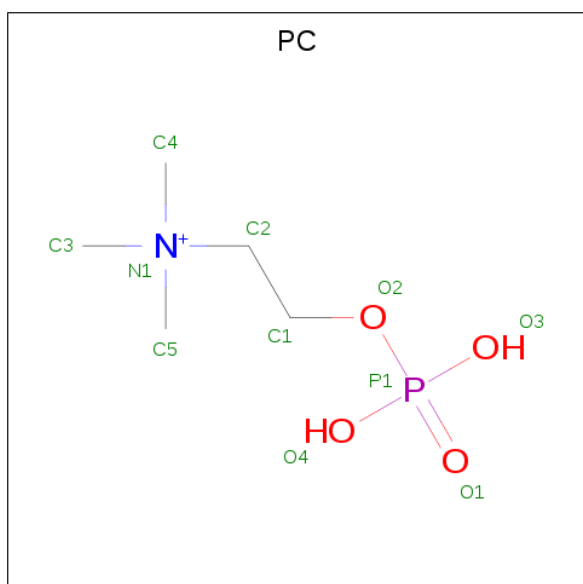
Mol	Chain	Residues	Atoms		ZeroOcc	AltConf
4	B	2	Total	Zn	0	0
			2	2		
4	A	2	Total	Zn	0	0
			2	2		

- Molecule 5 is 1,2-ETHANEDIOL (three-letter code: EDO) (formula: C₂H₆O₂).



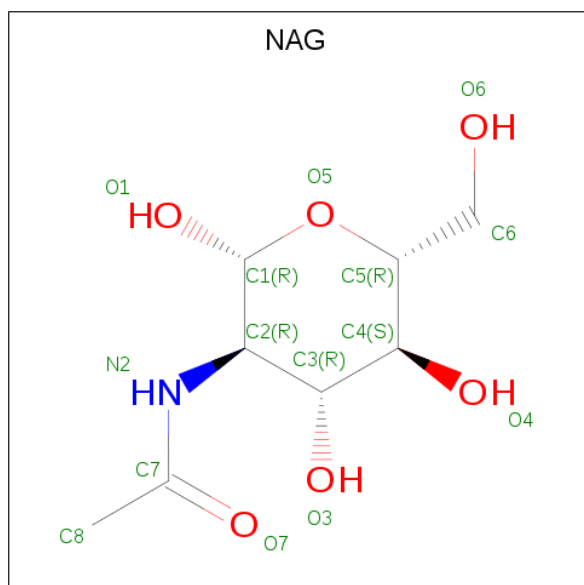
Mol	Chain	Residues	Atoms	ZeroOcc	AltConf
5	A	1	Total C O 4 2 2	0	0
5	A	1	Total C O 4 2 2	0	0
5	A	1	Total C O 4 2 2	0	0
5	B	1	Total C O 4 2 2	0	0
5	B	1	Total C O 4 2 2	0	0

- Molecule 6 is PHOSPHOCHOLINE (three-letter code: PC) (formula: $C_5H_{15}NO_4P$).



Mol	Chain	Residues	Atoms					ZeroOcc	AltConf
			Total	C	N	O	P		
6	A	1	11	5	1	4	1	0	0
6	B	1	11	5	1	4	1	0	0

- Molecule 7 is 2-acetamido-2-deoxy-beta-D-glucopyranose (three-letter code: NAG) (formula: $C_8H_{15}NO_6$).



Mol	Chain	Residues	Atoms				ZeroOcc	AltConf
			Total	C	N	O		
7	B	1	14	8	1	5	0	0

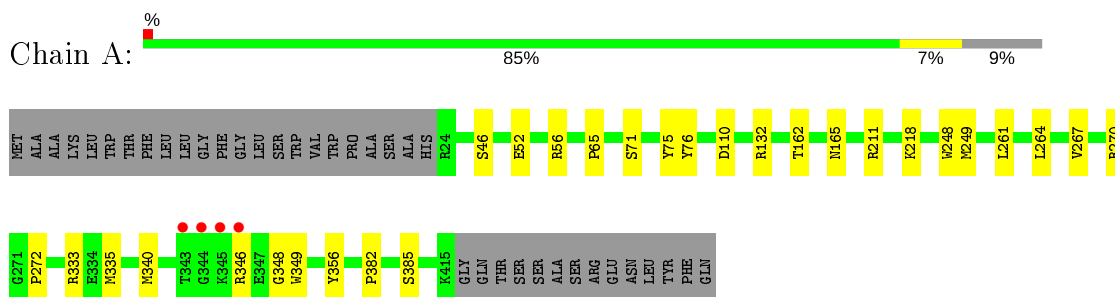
- Molecule 8 is water.

Mol	Chain	Residues	Atoms		ZeroOcc	AltConf
			Total	O		
8	A	295	295	295	0	0
8	B	233	233	233	0	0

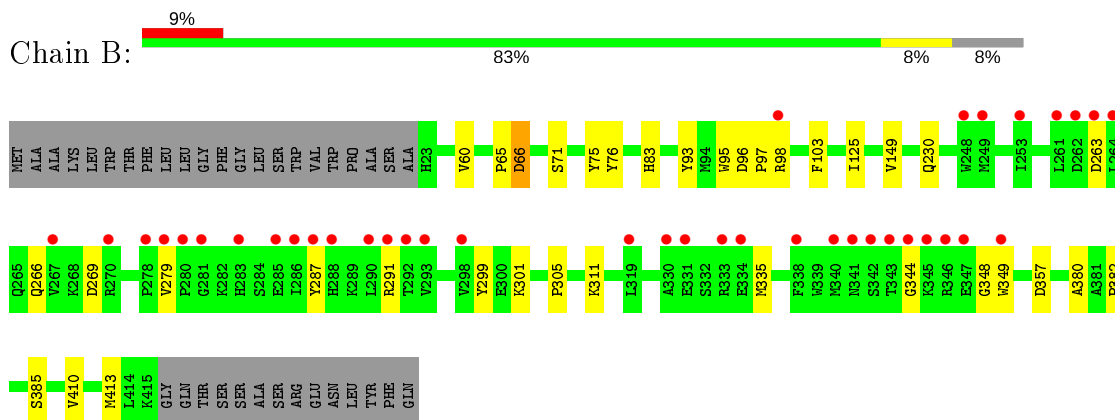
3 Residue-property plots [i](#)

These plots are drawn for all protein, RNA, DNA and oligosaccharide chains in the entry. The first graphic for a chain summarises the proportions of the various outlier classes displayed in the second graphic. The second graphic shows the sequence view annotated by issues in geometry and electron density. Residues are color-coded according to the number of geometric quality criteria for which they contain at least one outlier: green = 0, yellow = 1, orange = 2 and red = 3 or more. A red dot above a residue indicates a poor fit to the electron density ($RSRZ > 2$). Stretches of 2 or more consecutive residues without any outlier are shown as a green connector. Residues present in the sample, but not in the model, are shown in grey.

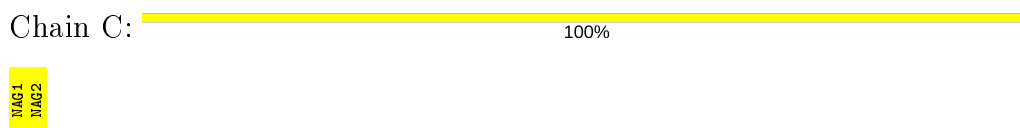
- Molecule 1: Ectonucleotide pyrophosphatase/phosphodiesterase family member 6



- Molecule 1: Ectonucleotide pyrophosphatase/phosphodiesterase family member 6



- Molecule 2: 2-acetamido-2-deoxy-beta-D-glucopyranose-(1-4)-2-acetamido-2-deoxy-beta-D-glucopyranose



- Molecule 2: 2-acetamido-2-deoxy-beta-D-glucopyranose-(1-4)-2-acetamido-2-deoxy-beta-D-glucopyranose





MAG1
MAG2

- Molecule 2: 2-acetamido-2-deoxy-beta-D-glucopyranose-(1-4)-2-acetamido-2-deoxy-beta-D-glucopyranose

Chain G:  100%



MAG1
MAG2


- Molecule 3: 2-acetamido-2-deoxy-beta-D-glucopyranose-(1-4)-[beta-L-fucopyranose-(1-6)]2-acetamido-2-deoxy-beta-D-glucopyranose

Chain D:  67% 33%



MAG1
MAG2
F013

- Molecule 3: 2-acetamido-2-deoxy-beta-D-glucopyranose-(1-4)-[beta-L-fucopyranose-(1-6)]2-acetamido-2-deoxy-beta-D-glucopyranose

Chain F:  33% 33% 33%



MAG1
MAG2
F013

4 Data and refinement statistics

Property	Value	Source
Space group	P 1	Depositor
Cell constants a, b, c, α , β , γ	63.62Å 68.85Å 69.76Å 60.59° 86.99° 68.10°	Depositor
Resolution (Å)	45.63 – 1.80 47.77 – 1.80	Depositor EDS
% Data completeness (in resolution range)	93.9 (45.63-1.80) 93.9 (47.77-1.80)	Depositor EDS
R_{merge}	(Not available)	Depositor
R_{sym}	(Not available)	Depositor
$\langle I/\sigma(I) \rangle$ ¹	1.52 (at 1.81Å)	Xtrriage
Refinement program	PHENIX (1.10_2155: ???)	Depositor
R, R_{free}	0.175 , 0.211 0.175 , 0.212	Depositor DCC
R_{free} test set	4091 reflections (5.00%)	wwPDB-VP
Wilson B-factor (Å ²)	26.5	Xtrriage
Anisotropy	0.073	Xtrriage
Bulk solvent k_{sol} (e/Å ³), B_{sol} (Å ²)	0.35 , 45.8	EDS
L-test for twinning ²	$\langle L \rangle = 0.49$, $\langle L^2 \rangle = 0.32$	Xtrriage
Estimated twinning fraction	No twinning to report.	Xtrriage
F_o, F_c correlation	0.97	EDS
Total number of atoms	7187	wwPDB-VP
Average B, all atoms (Å ²)	32.0	wwPDB-VP

Xtrriage's analysis on translational NCS is as follows: *The largest off-origin peak in the Patterson function is 6.28% of the height of the origin peak. No significant pseudotranslation is detected.*

¹Intensities estimated from amplitudes.

²Theoretical values of $\langle |L| \rangle$, $\langle L^2 \rangle$ for acentric reflections are 0.5, 0.333 respectively for untwinned datasets, and 0.375, 0.2 for perfectly twinned datasets.

5 Model quality [i](#)

5.1 Standard geometry [i](#)

Bond lengths and bond angles in the following residue types are not validated in this section: PC, ZN, NAG, FUL, EDO

The Z score for a bond length (or angle) is the number of standard deviations the observed value is removed from the expected value. A bond length (or angle) with $|Z| > 5$ is considered an outlier worth inspection. RMSZ is the root-mean-square of all Z scores of the bond lengths (or angles).

Mol	Chain	Bond lengths		Bond angles	
		RMSZ	# Z >5	RMSZ	# Z >5
1	A	0.38	0/3322	0.56	0/4512
1	B	0.34	0/3315	0.53	0/4503
All	All	0.36	0/6637	0.54	0/9015

There are no bond length outliers.

There are no bond angle outliers.

There are no chirality outliers.

There are no planarity outliers.

5.2 Too-close contacts [i](#)

In the following table, the Non-H and H(model) columns list the number of non-hydrogen atoms and hydrogen atoms in the chain respectively. The H(added) column lists the number of hydrogen atoms added and optimized by MolProbity. The Clashes column lists the number of clashes within the asymmetric unit, whereas Symm-Clashes lists symmetry related clashes.

Mol	Chain	Non-H	H(model)	H(added)	Clashes	Symm-Clashes
1	A	3220	0	3144	20	0
1	B	3219	0	3135	20	0
2	C	28	0	25	0	0
2	E	28	0	25	0	0
2	G	28	0	25	0	0
3	D	38	0	34	2	0
3	F	38	0	34	2	0
4	A	2	0	0	0	0
4	B	2	0	0	0	0
5	A	12	0	18	0	0
5	B	8	0	12	1	0

Continued on next page...

Continued from previous page...

Mol	Chain	Non-H	H(model)	H(added)	Clashes	Symm-Clashes
6	A	11	0	13	2	0
6	B	11	0	13	0	0
7	B	14	0	13	1	0
8	A	295	0	0	4	1
8	B	233	0	0	4	1
All	All	7187	0	6491	41	1

The all-atom clashscore is defined as the number of clashes found per 1000 atoms (including hydrogen atoms). The all-atom clashscore for this structure is 3.

All (41) close contacts within the same asymmetric unit are listed below, sorted by their clash magnitude.

Atom-1	Atom-2	Interatomic distance (Å)	Clash overlap (Å)
1:A:382:PRO:HG2	1:B:382:PRO:HG2	1.61	0.81
5:B:509:EDO:O2	8:B:601:HOH:O	2.11	0.67
1:B:348:GLY:HA2	3:F:3:FUL:O2	2.00	0.61
1:A:270:ARG:NH2	1:A:335:MET:O	2.34	0.60
1:B:230:GLN:NE2	8:B:606:HOH:O	2.36	0.58
1:A:248:TRP:O	8:A:601:HOH:O	2.17	0.58
7:B:501:NAG:O4	8:B:602:HOH:O	2.16	0.57
1:A:162:THR:H	1:A:165:ASN:HD22	1.53	0.55
1:A:348:GLY:HA2	3:D:3:FUL:O2	2.07	0.54
1:B:287:TYR:O	1:B:291:ARG:HG2	2.07	0.54
1:A:110:ASP:OD1	8:A:602:HOH:O	2.19	0.53
1:A:218:LYS:HD2	8:A:646:HOH:O	2.08	0.53
1:B:349:TRP:HB2	3:F:3:FUL:H3	1.91	0.52
1:B:287:TYR:CZ	1:B:291:ARG:HD3	2.47	0.50
1:A:132:ARG:NH2	8:A:610:HOH:O	2.43	0.50
1:B:301:LYS:HE3	1:B:311:LYS:O	2.10	0.49
1:B:95:TRP:CZ3	1:B:97:PRO:HB3	2.48	0.49
1:A:162:THR:H	1:A:165:ASN:ND2	2.11	0.49
1:A:249:MET:O	1:A:333:ARG:NH2	2.45	0.48
1:B:96:ASP:OD2	1:B:98:ARG:NH2	2.47	0.47
1:B:410:VAL:O	1:B:413:MET:HG2	2.15	0.46
1:A:52:GLU:OE2	1:A:56:ARG:NH1	2.47	0.46
1:B:269:ASP:OD2	8:B:603:HOH:O	2.20	0.46
1:B:299:TYR:CE1	1:B:305:PRO:HD3	2.51	0.45
1:A:46:SER:O	1:A:211:ARG:NH1	2.49	0.45
1:B:263:ASP:O	1:B:279:VAL:HG22	2.17	0.44
1:A:349:TRP:HB2	3:D:3:FUL:H3	2.00	0.44
1:A:71:SER:OG	6:A:512:PC:P1	2.77	0.43

Continued on next page...

Continued from previous page...

Atom-1	Atom-2	Interatomic distance (Å)	Clash overlap (Å)
1:B:125:ILE:HD12	1:B:149:VAL:HB	2.01	0.43
1:A:71:SER:HB3	1:A:75:TYR:CZ	2.53	0.43
1:B:95:TRP:CD2	1:B:266:GLN:HG2	2.54	0.43
1:B:60:VAL:HG12	1:B:380:ALA:HB3	2.01	0.42
1:A:272:PRO:HB3	1:A:356:TYR:CE1	2.54	0.42
1:B:65:PRO:HA	1:B:385[B]:SER:OG	2.20	0.42
1:B:71:SER:HB3	1:B:75:TYR:CZ	2.55	0.41
1:A:71:SER:OG	6:A:512:PC:O3	2.39	0.41
1:B:66:ASP:OD2	1:B:83:HIS:HA	2.21	0.41
1:A:264:LEU:HD13	1:A:267:VAL:CG2	2.50	0.41
1:B:93:TYR:HA	1:B:103:PHE:O	2.21	0.40
1:A:340:MET:HB2	1:A:346:ARG:HG2	2.02	0.40
1:A:65:PRO:HA	1:A:385[B]:SER:OG	2.20	0.40

All (1) symmetry-related close contacts are listed below. The label for Atom-2 includes the symmetry operator and encoded unit-cell translations to be applied.

Atom-1	Atom-2	Interatomic distance (Å)	Clash overlap (Å)
8:A:656:HOH:O	8:B:762:HOH:O[1_464]	2.14	0.06

5.3 Torsion angles [i](#)

5.3.1 Protein backbone [i](#)

In the following table, the Percentiles column shows the percent Ramachandran outliers of the chain as a percentile score with respect to all X-ray entries followed by that with respect to entries of similar resolution.

The Analysed column shows the number of residues for which the backbone conformation was analysed, and the total number of residues.

Mol	Chain	Analysed	Favoured	Allowed	Outliers	Percentiles	
1	A	396/429 (92%)	379 (96%)	17 (4%)	0	100	100
1	B	395/429 (92%)	380 (96%)	13 (3%)	2 (0%)	29	15
All	All	791/858 (92%)	759 (96%)	30 (4%)	2 (0%)	41	27

All (2) Ramachandran outliers are listed below:

Mol	Chain	Res	Type
1	B	357	ASP
1	B	344	GLY

5.3.2 Protein sidechains [i](#)

In the following table, the Percentiles column shows the percent sidechain outliers of the chain as a percentile score with respect to all X-ray entries followed by that with respect to entries of similar resolution.

The Analysed column shows the number of residues for which the sidechain conformation was analysed, and the total number of residues.

Mol	Chain	Analysed	Rotameric	Outliers	Percentiles	
1	A	352/377 (93%)	350 (99%)	2 (1%)	86	84
1	B	350/377 (93%)	347 (99%)	3 (1%)	78	75
All	All	702/754 (93%)	697 (99%)	5 (1%)	84	81

All (5) residues with a non-rotameric sidechain are listed below:

Mol	Chain	Res	Type
1	A	76	TYR
1	A	261	LEU
1	B	66	ASP
1	B	76	TYR
1	B	335	MET

Some sidechains can be flipped to improve hydrogen bonding and reduce clashes. All (3) such sidechains are listed below:

Mol	Chain	Res	Type
1	A	165	ASN
1	A	283	HIS
1	A	295	HIS

5.3.3 RNA [i](#)

There are no RNA molecules in this entry.

5.4 Non-standard residues in protein, DNA, RNA chains [i](#)

There are no non-standard protein/DNA/RNA residues in this entry.

5.5 Carbohydrates i

12 monosaccharides are modelled in this entry.

In the following table, the Counts columns list the number of bonds (or angles) for which Mogul statistics could be retrieved, the number of bonds (or angles) that are observed in the model and the number of bonds (or angles) that are defined in the Chemical Component Dictionary. The Link column lists molecule types, if any, to which the group is linked. The Z score for a bond length (or angle) is the number of standard deviations the observed value is removed from the expected value. A bond length (or angle) with $|Z| > 2$ is considered an outlier worth inspection. RMSZ is the root-mean-square of all Z scores of the bond lengths (or angles).

Mol	Type	Chain	Res	Link	Bond lengths			Bond angles		
					Counts	RMSZ	# Z > 2	Counts	RMSZ	# Z > 2
2	NAG	C	1	1,2	14,14,15	0.43	0	17,19,21	0.88	1 (5%)
2	NAG	C	2	2	14,14,15	0.64	1 (7%)	17,19,21	1.31	1 (5%)
3	NAG	D	1	1,3	14,14,15	0.44	0	17,19,21	0.64	0
3	NAG	D	2	3	14,14,15	0.40	0	17,19,21	0.35	0
3	FUL	D	3	3	10,10,11	1.52	3 (30%)	14,14,16	2.33	6 (42%)
2	NAG	E	1	1,2	14,14,15	0.46	0	17,19,21	0.44	0
2	NAG	E	2	2	14,14,15	0.16	0	17,19,21	0.64	1 (5%)
3	NAG	F	1	1,3	14,14,15	0.24	0	17,19,21	0.66	1 (5%)
3	NAG	F	2	3	14,14,15	0.47	0	17,19,21	0.56	0
3	FUL	F	3	3	10,10,11	1.21	1 (10%)	14,14,16	2.03	3 (21%)
2	NAG	G	1	1,2	14,14,15	0.44	0	17,19,21	0.49	0
2	NAG	G	2	2	14,14,15	0.31	0	17,19,21	0.39	0

In the following table, the Chirals column lists the number of chiral outliers, the number of chiral centers analysed, the number of these observed in the model and the number defined in the Chemical Component Dictionary. Similar counts are reported in the Torsion and Rings columns. '-' means no outliers of that kind were identified.

Mol	Type	Chain	Res	Link	Chirals	Torsions	Rings
2	NAG	C	1	1,2	-	0/6/23/26	0/1/1/1
2	NAG	C	2	2	-	3/6/23/26	0/1/1/1
3	NAG	D	1	1,3	-	1/6/23/26	0/1/1/1
3	NAG	D	2	3	-	0/6/23/26	0/1/1/1
3	FUL	D	3	3	-	-	0/1/1/1
2	NAG	E	1	1,2	-	0/6/23/26	0/1/1/1
2	NAG	E	2	2	-	0/6/23/26	0/1/1/1
3	NAG	F	1	1,3	-	1/6/23/26	0/1/1/1
3	NAG	F	2	3	-	2/6/23/26	0/1/1/1
3	FUL	F	3	3	-	-	0/1/1/1
2	NAG	G	1	1,2	-	0/6/23/26	0/1/1/1

Continued on next page...

Continued from previous page...

Mol	Type	Chain	Res	Link	Chirals	Torsions	Rings
2	NAG	G	2	2	-	2/6/23/26	0/1/1/1

All (5) bond length outliers are listed below:

Mol	Chain	Res	Type	Atoms	Z	Observed(Å)	Ideal(Å)
3	D	3	FUL	C2-C3	-2.80	1.48	1.52
3	F	3	FUL	C2-C3	-2.47	1.48	1.52
3	D	3	FUL	O5-C1	-2.42	1.39	1.43
3	D	3	FUL	C4-C5	2.29	1.57	1.52
2	C	2	NAG	O5-C1	2.27	1.47	1.43

All (13) bond angle outliers are listed below:

Mol	Chain	Res	Type	Atoms	Z	Observed(°)	Ideal(°)
2	C	2	NAG	C1-O5-C5	5.13	119.14	112.19
3	D	3	FUL	O5-C5-C4	4.61	117.79	109.52
3	F	3	FUL	C1-O5-C5	4.23	122.37	112.78
3	D	3	FUL	C3-C4-C5	3.99	115.98	109.77
3	F	3	FUL	O5-C5-C4	3.75	116.25	109.52
3	D	3	FUL	C1-O5-C5	3.26	120.17	112.78
3	F	3	FUL	C1-C2-C3	2.99	113.35	109.67
2	C	1	NAG	C1-O5-C5	2.43	115.49	112.19
3	D	3	FUL	O2-C2-C3	-2.41	105.31	110.14
3	D	3	FUL	C2-C3-C4	2.38	115.01	110.89
3	F	1	NAG	C1-O5-C5	2.33	115.34	112.19
3	D	3	FUL	C1-C2-C3	2.32	112.52	109.67
2	E	2	NAG	C1-O5-C5	2.07	115.00	112.19

There are no chirality outliers.

All (9) torsion outliers are listed below:

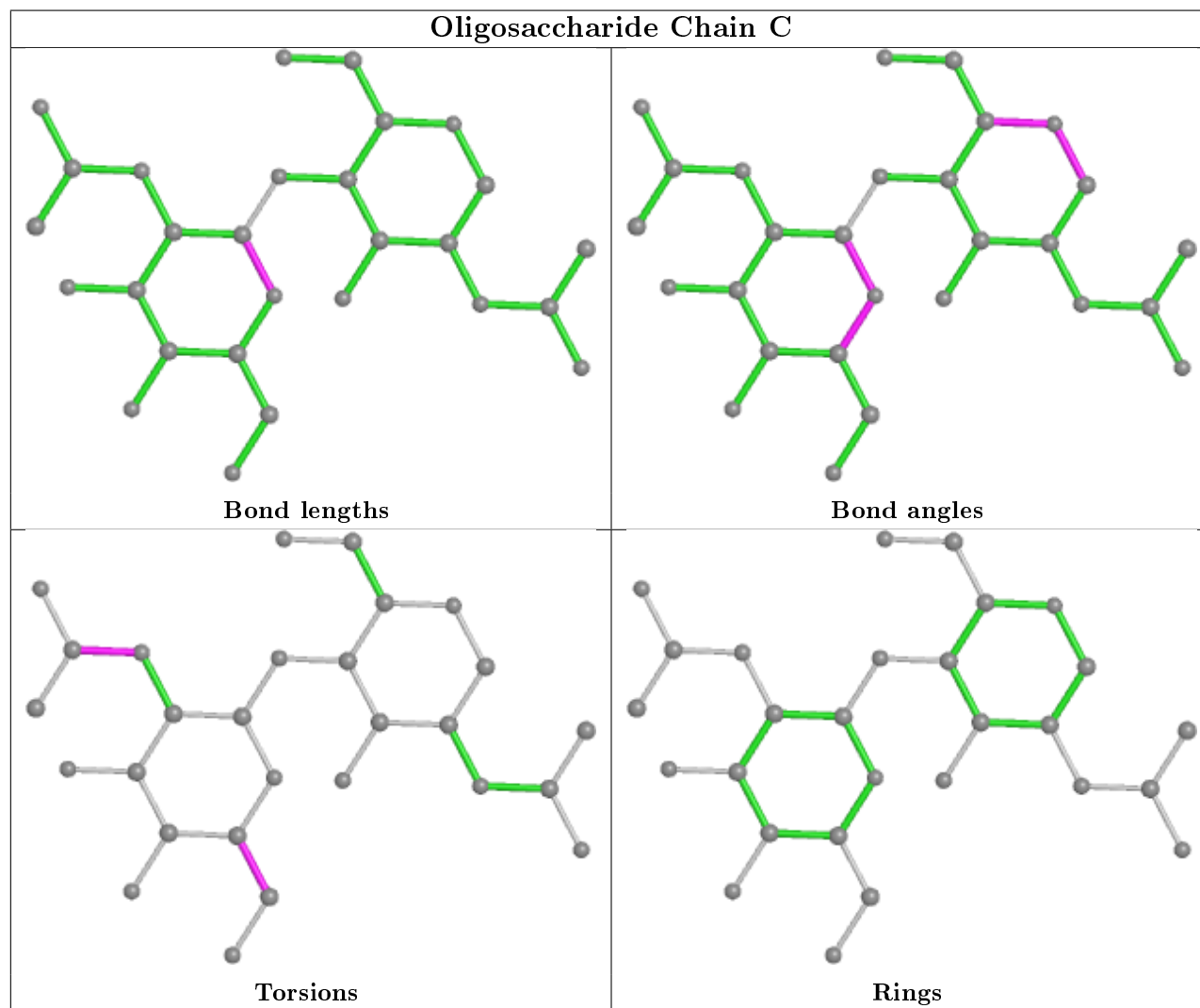
Mol	Chain	Res	Type	Atoms
3	F	2	NAG	O5-C5-C6-O6
2	G	2	NAG	O5-C5-C6-O6
2	C	2	NAG	C8-C7-N2-C2
2	C	2	NAG	O7-C7-N2-C2
2	G	2	NAG	C4-C5-C6-O6
3	F	2	NAG	C4-C5-C6-O6
2	C	2	NAG	O5-C5-C6-O6
3	D	1	NAG	C4-C5-C6-O6
3	F	1	NAG	C4-C5-C6-O6

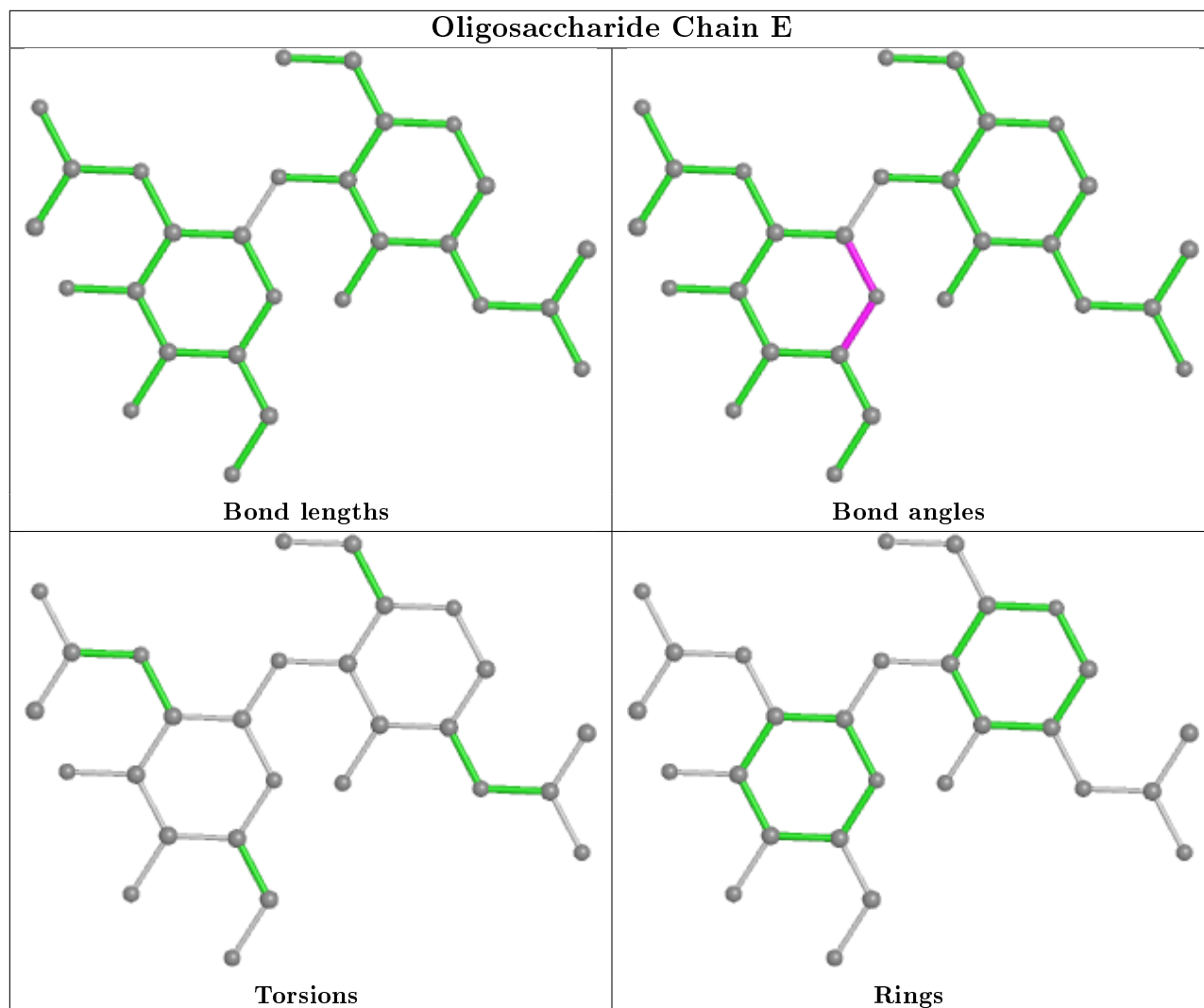
There are no ring outliers.

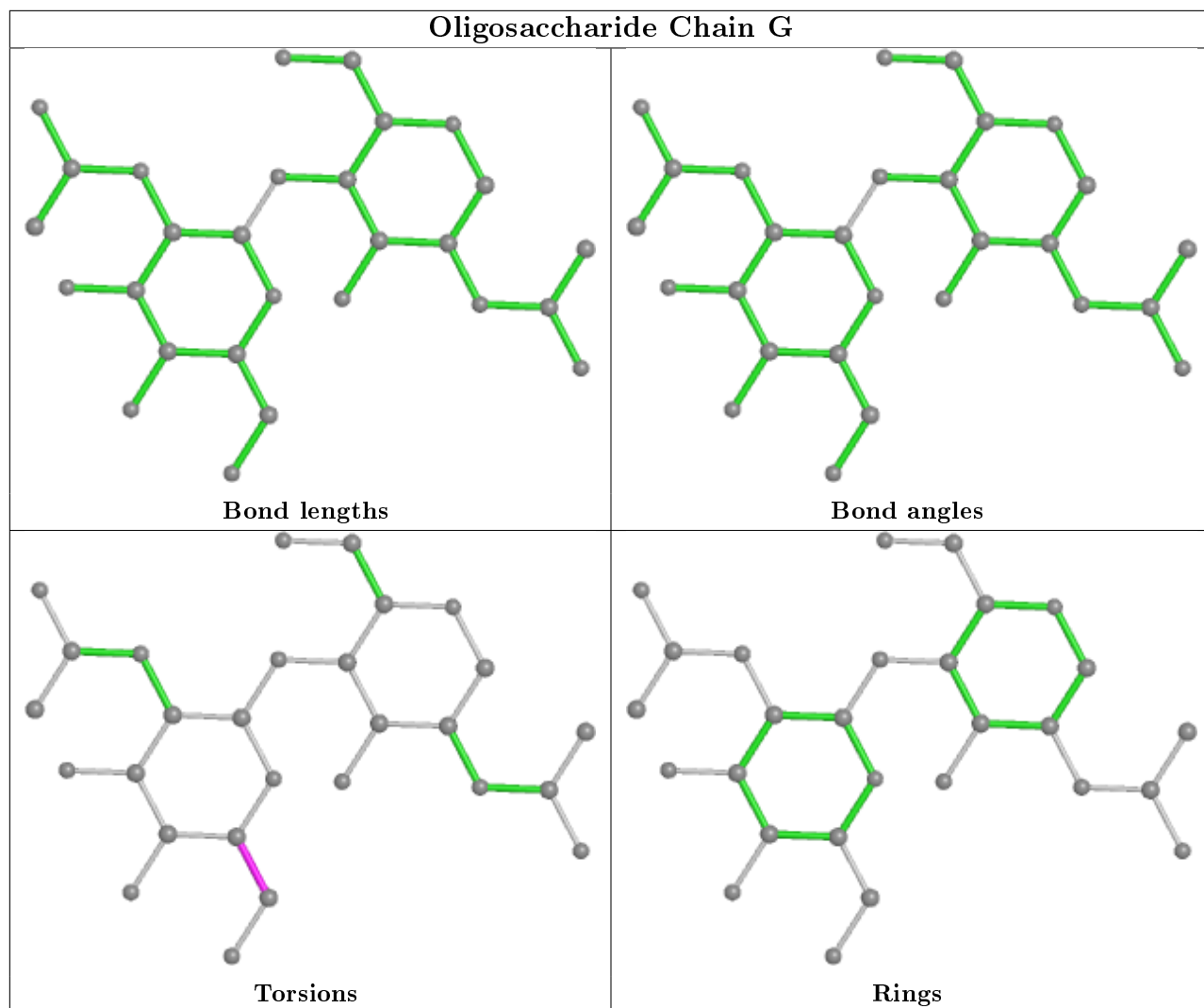
2 monomers are involved in 4 short contacts:

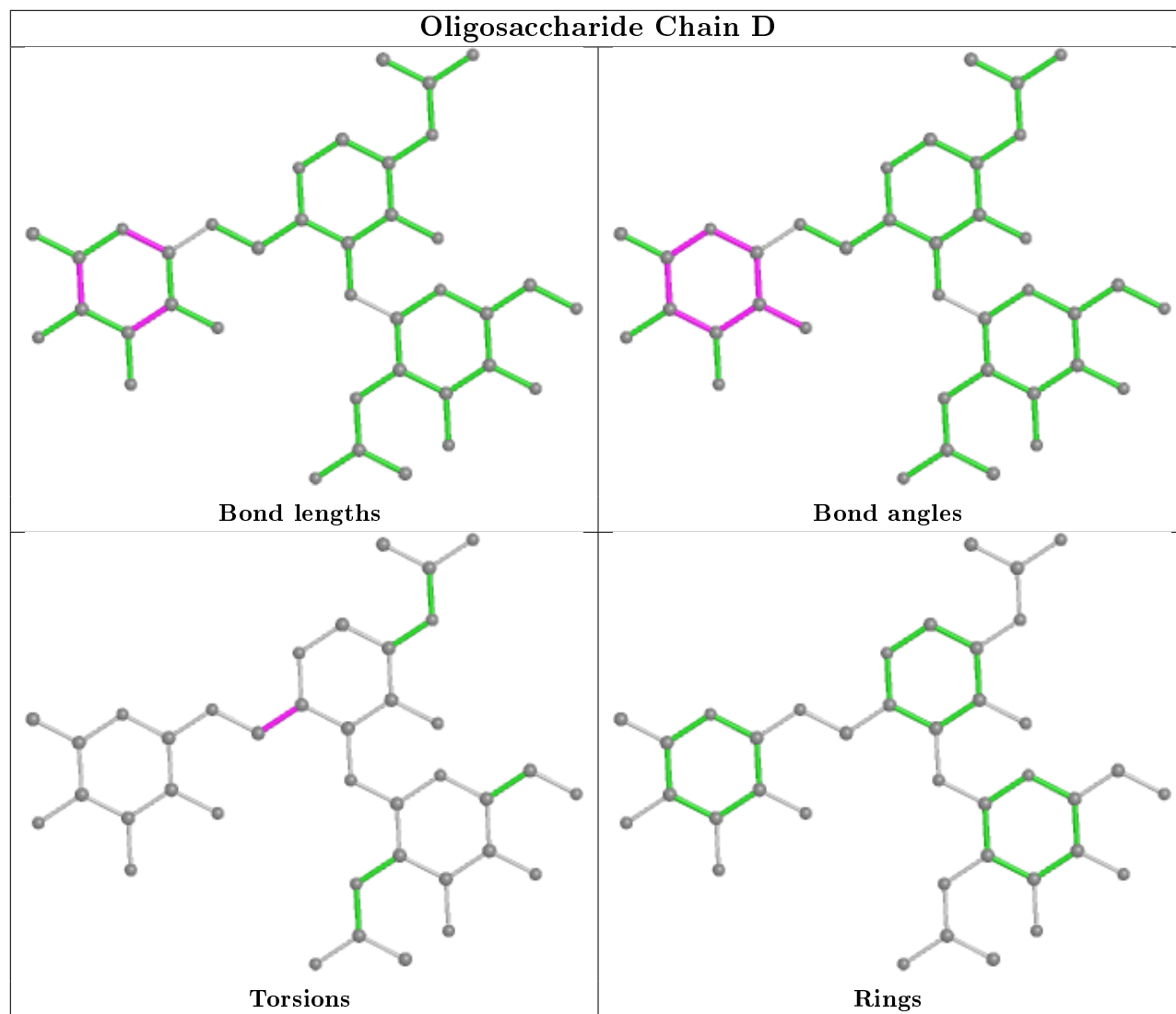
Mol	Chain	Res	Type	Clashes	Symm-Clashes
3	F	3	FUL	2	0
3	D	3	FUL	2	0

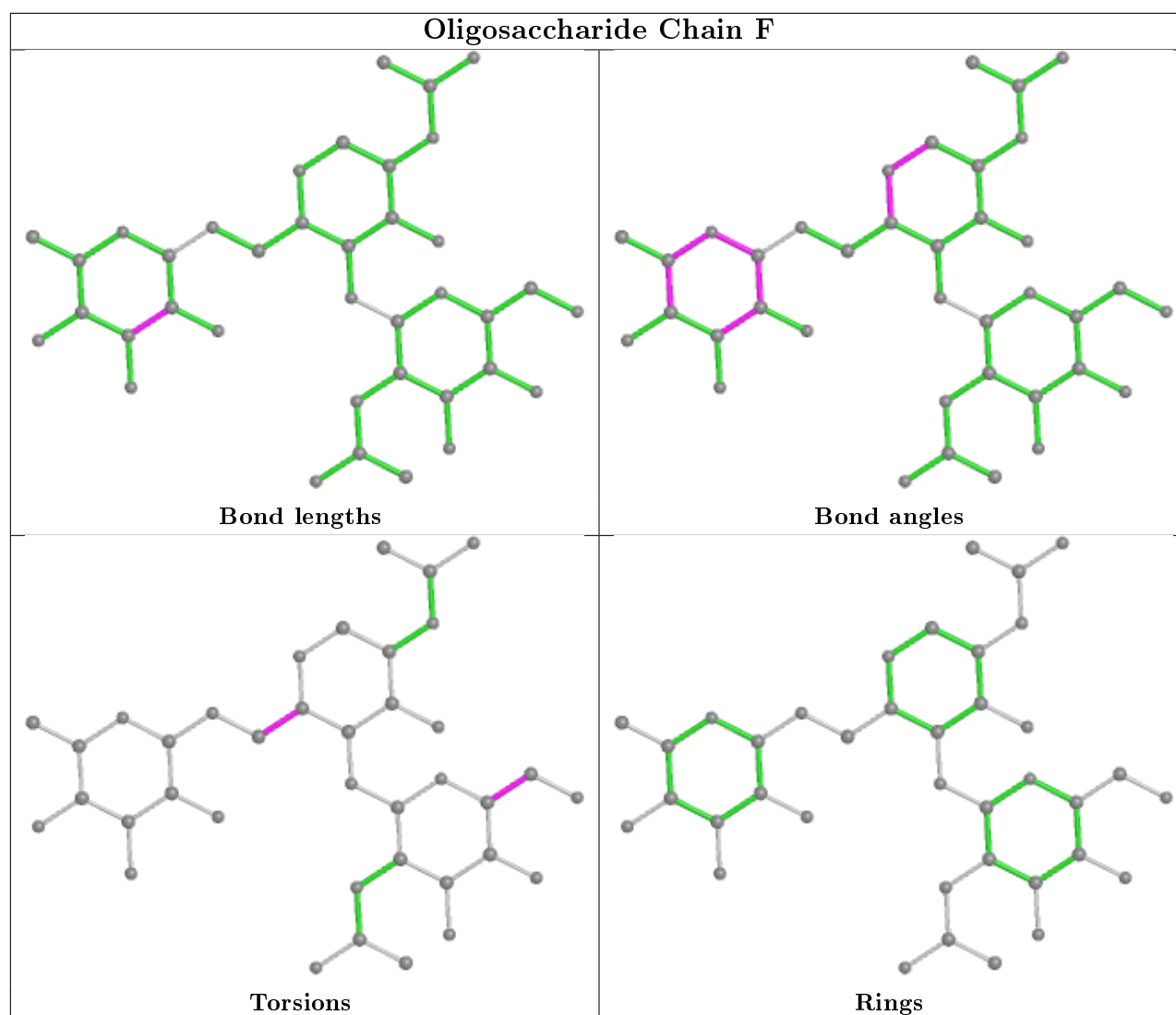
The following is a two-dimensional graphical depiction of Mogul quality analysis of bond lengths, bond angles, torsion angles, and ring geometry for oligosaccharide.











5.6 Ligand geometry [i](#)

Of 12 ligands modelled in this entry, 4 are monoatomic - leaving 8 for Mogul analysis.

In the following table, the Counts columns list the number of bonds (or angles) for which Mogul statistics could be retrieved, the number of bonds (or angles) that are observed in the model and the number of bonds (or angles) that are defined in the Chemical Component Dictionary. The Link column lists molecule types, if any, to which the group is linked. The Z score for a bond length (or angle) is the number of standard deviations the observed value is removed from the expected value. A bond length (or angle) with $|Z| > 2$ is considered an outlier worth inspection. RMSZ is the root-mean-square of all Z scores of the bond lengths (or angles).

Mol	Type	Chain	Res	Link	Bond lengths			Bond angles		
					Counts	RMSZ	$\# Z > 2$	Counts	RMSZ	$\# Z > 2$
6	PC	A	512	4	10,10,10	1.00	0	15,15,15	1.24	1 (6%)
5	EDO	A	513	-	3,3,3	0.50	0	2,2,2	0.14	0

Mol	Type	Chain	Res	Link	Bond lengths			Bond angles		
					Counts	RMSZ	# Z > 2	Counts	RMSZ	# Z > 2
6	PC	B	510	4	10,10,10	0.95	0	15,15,15	1.20	2 (13%)
7	NAG	B	501	1	14,14,15	0.29	0	17,19,21	0.73	1 (5%)
5	EDO	A	511	-	3,3,3	0.40	0	2,2,2	0.46	0
5	EDO	B	511	-	3,3,3	0.48	0	2,2,2	0.35	0
5	EDO	B	509	-	3,3,3	0.47	0	2,2,2	0.24	0
5	EDO	A	510	-	3,3,3	0.47	0	2,2,2	0.45	0

In the following table, the Chirals column lists the number of chiral outliers, the number of chiral centers analysed, the number of these observed in the model and the number defined in the Chemical Component Dictionary. Similar counts are reported in the Torsion and Rings columns. '-' means no outliers of that kind were identified.

Mol	Type	Chain	Res	Link	Chirals	Torsions	Rings
6	PC	A	512	4	-	0/8/8/8	-
5	EDO	A	513	-	-	0/1/1/1	-
6	PC	B	510	4	-	0/8/8/8	-
7	NAG	B	501	1	-	0/6/23/26	0/1/1/1
5	EDO	A	511	-	-	0/1/1/1	-
5	EDO	B	511	-	-	0/1/1/1	-
5	EDO	B	509	-	-	1/1/1/1	-
5	EDO	A	510	-	-	1/1/1/1	-

There are no bond length outliers.

All (4) bond angle outliers are listed below:

Mol	Chain	Res	Type	Atoms	Z	Observed(°)	Ideal(°)
6	A	512	PC	O3-P1-O2	2.71	113.96	106.73
6	B	510	PC	C5-N1-C2	2.43	119.84	109.92
6	B	510	PC	C1-C2-N1	2.31	123.48	115.78
7	B	501	NAG	C1-O5-C5	2.30	115.31	112.19

There are no chirality outliers.

All (2) torsion outliers are listed below:

Mol	Chain	Res	Type	Atoms
5	B	509	EDO	O1-C1-C2-O2
5	A	510	EDO	O1-C1-C2-O2

There are no ring outliers.

3 monomers are involved in 4 short contacts:

Mol	Chain	Res	Type	Clashes	Symm-Clashes
6	A	512	PC	2	0
7	B	501	NAG	1	0
5	B	509	EDO	1	0

5.7 Other polymers [i](#)

There are no such residues in this entry.

5.8 Polymer linkage issues [i](#)

There are no chain breaks in this entry.

6 Fit of model and data

6.1 Protein, DNA and RNA chains

In the following table, the column labelled ‘#RSRZ> 2’ contains the number (and percentage) of RSRZ outliers, followed by percent RSRZ outliers for the chain as percentile scores relative to all X-ray entries and entries of similar resolution. The OWAB column contains the minimum, median, 95th percentile and maximum values of the occupancy-weighted average B-factor per residue. The column labelled ‘Q< 0.9’ lists the number of (and percentage) of residues with an average occupancy less than 0.9.

Mol	Chain	Analysed	<RSRZ>	#RSRZ>2	OWAB(Å ²)	Q<0.9
1	A	392/429 (91%)	-0.14	4 (1%) 82 80	16, 26, 44, 73	0
1	B	393/429 (91%)	0.29	39 (9%) 7 5	17, 31, 64, 86	0
All	All	785/858 (91%)	0.07	43 (5%) 25 20	16, 28, 61, 86	0

All (43) RSRZ outliers are listed below:

Mol	Chain	Res	Type	RSRZ
1	B	343	THR	7.7
1	B	344	GLY	6.7
1	B	279	VAL	5.5
1	B	342	SER	5.5
1	A	343	THR	5.2
1	B	281	GLY	4.8
1	B	261	LEU	4.7
1	B	280	PRO	4.7
1	B	349	TRP	4.6
1	A	344	GLY	4.4
1	B	345	LYS	4.4
1	B	286	ILE	4.3
1	B	346	ARG	4.3
1	B	340	MET	3.8
1	B	264	LEU	3.8
1	B	292	THR	3.6
1	A	345	LYS	3.5
1	B	338	PHE	3.3
1	B	347	GLU	3.2
1	B	334	GLU	3.1
1	B	287	TYR	3.1
1	B	285	GLU	3.0
1	B	331	GLU	2.9
1	B	262	ASP	2.7

Continued on next page...

Continued from previous page...

Mol	Chain	Res	Type	RSRZ
1	B	341	ASN	2.7
1	B	330	ALA	2.7
1	B	333	ARG	2.7
1	B	291	ARG	2.7
1	B	290	LEU	2.6
1	B	263	ASP	2.6
1	B	298	VAL	2.6
1	B	267	VAL	2.5
1	B	293	VAL	2.4
1	B	278	PRO	2.4
1	B	288	HIS	2.3
1	B	319	LEU	2.3
1	B	283	HIS	2.3
1	B	253	ILE	2.2
1	A	346	ARG	2.2
1	B	249	MET	2.2
1	B	248	TRP	2.2
1	B	98	ARG	2.1
1	B	270	ARG	2.0

6.2 Non-standard residues in protein, DNA, RNA chains [i](#)

There are no non-standard protein/DNA/RNA residues in this entry.

6.3 Carbohydrates [i](#)

In the following table, the Atoms column lists the number of modelled atoms in the group and the number defined in the chemical component dictionary. The B-factors column lists the minimum, median, 95th percentile and maximum values of B factors of atoms in the group. The column labelled 'Q<0.9' lists the number of atoms with occupancy less than 0.9.

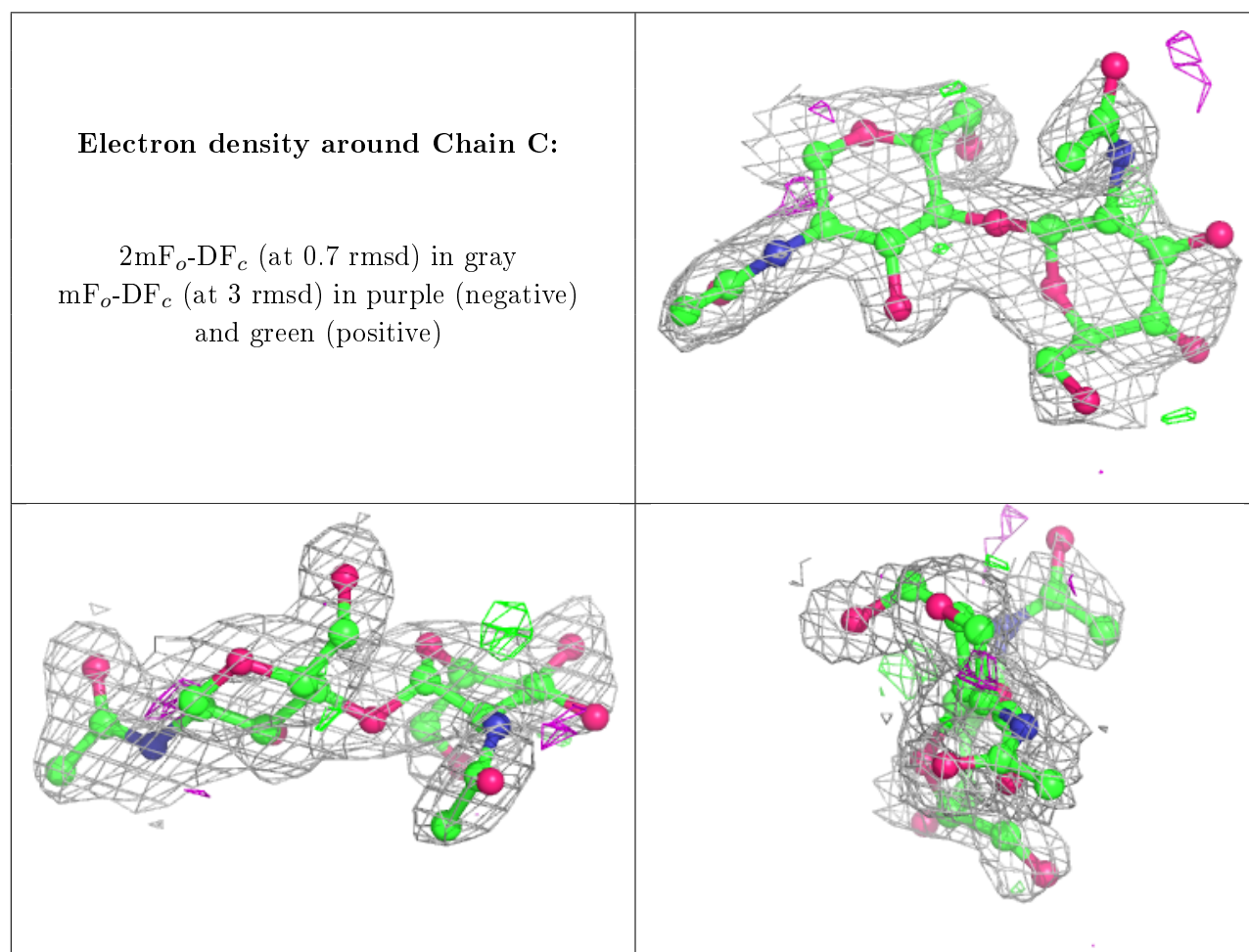
Mol	Type	Chain	Res	Atoms	RSCC	RSR	B-factors(Å ²)	Q<0.9
3	NAG	F	2	14/15	0.73	0.39	64,75,81,84	0
3	NAG	D	2	14/15	0.76	0.39	64,71,80,80	0
3	FUL	D	3	10/11	0.79	0.23	37,49,51,57	0
3	FUL	F	3	10/11	0.80	0.35	59,64,70,75	0
2	NAG	C	2	14/15	0.80	0.26	56,67,73,77	0
3	NAG	F	1	14/15	0.82	0.32	61,67,72,74	0
3	NAG	D	1	14/15	0.86	0.23	48,53,60,65	0
2	NAG	G	2	14/15	0.87	0.24	42,51,64,71	0
2	NAG	E	2	14/15	0.88	0.20	42,48,63,65	0

Continued on next page...

Continued from previous page...

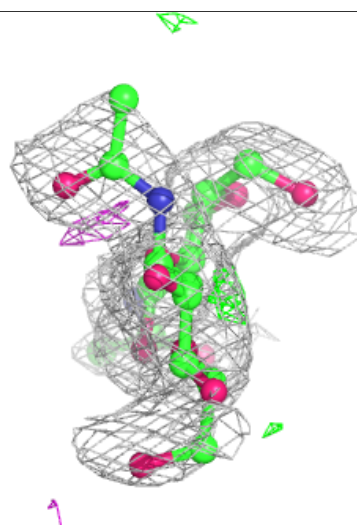
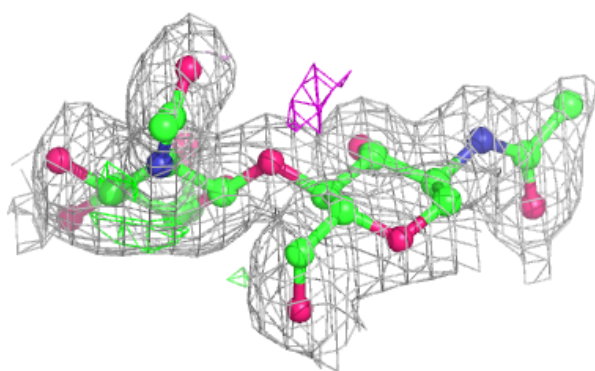
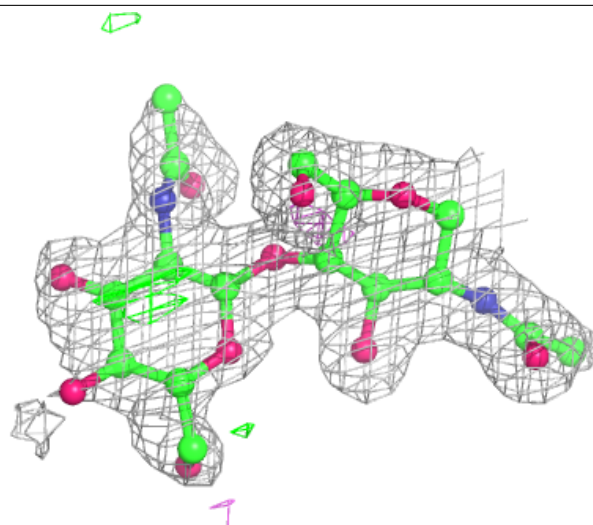
Mol	Type	Chain	Res	Atoms	RSCC	RSR	B-factors(\AA^2)	Q<0.9
2	NAG	C	1	14/15	0.90	0.12	29,37,45,48	0
2	NAG	G	1	14/15	0.93	0.15	34,40,48,50	0
2	NAG	E	1	14/15	0.95	0.09	28,32,42,44	0

The following is a graphical depiction of the model fit to experimental electron density for oligosaccharide. Each fit is shown from different orientation to approximate a three-dimensional view.



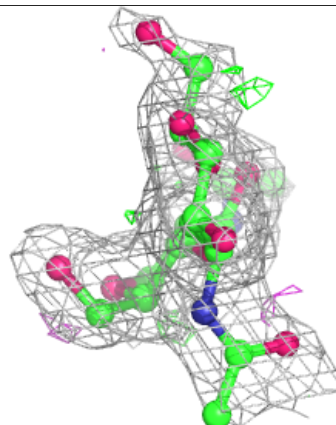
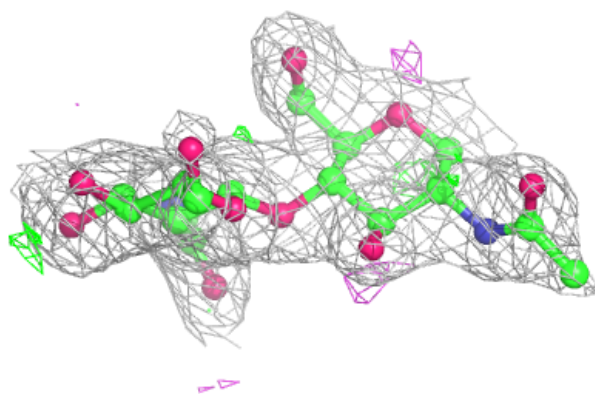
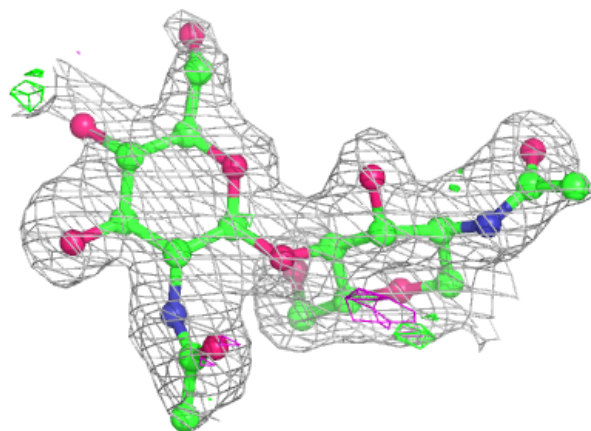
Electron density around Chain E:

$2mF_o-DF_c$ (at 0.7 rmsd) in gray
 mF_o-DF_c (at 3 rmsd) in purple (negative)
and green (positive)



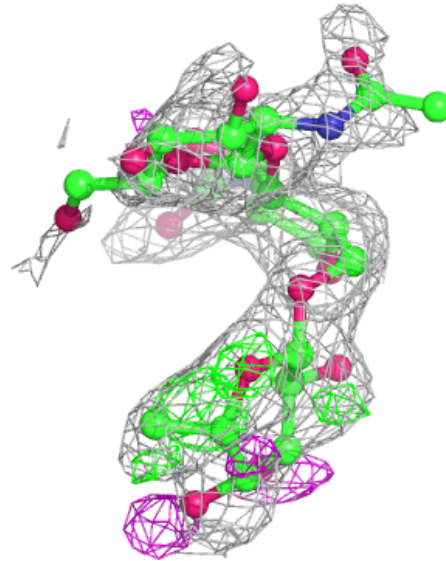
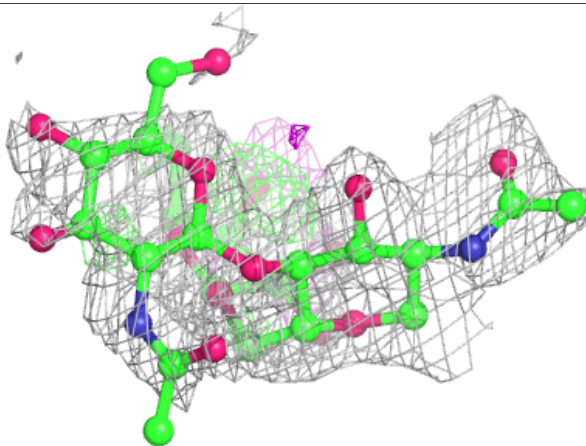
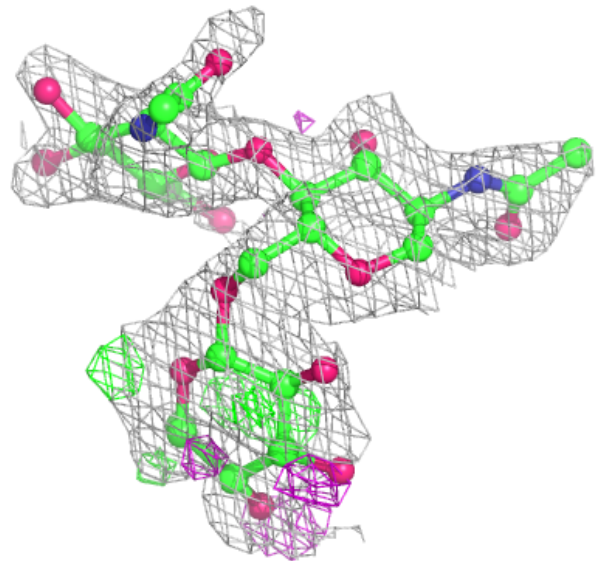
Electron density around Chain G:

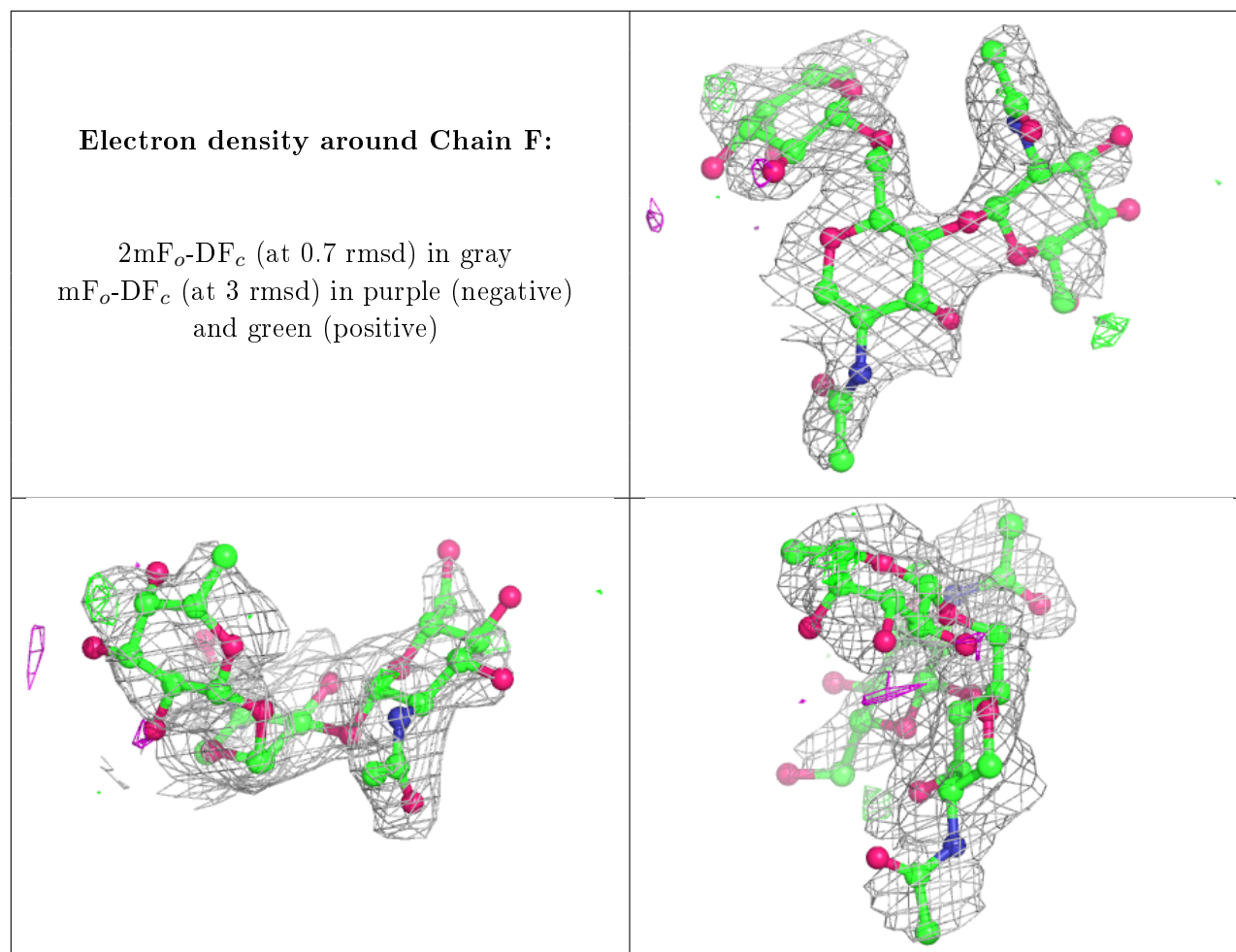
$2mF_o-DF_c$ (at 0.7 rmsd) in gray
 mF_o-DF_c (at 3 rmsd) in purple (negative)
and green (positive)



Electron density around Chain D:

$2mF_o-DF_c$ (at 0.7 rmsd) in gray
 mF_o-DF_c (at 3 rmsd) in purple (negative)
and green (positive)





6.4 Ligands [i](#)

In the following table, the Atoms column lists the number of modelled atoms in the group and the number defined in the chemical component dictionary. The B-factors column lists the minimum, median, 95th percentile and maximum values of B factors of atoms in the group. The column labelled 'Q< 0.9' lists the number of atoms with occupancy less than 0.9.

Mol	Type	Chain	Res	Atoms	RSCC	RSR	B-factors(Å ²)	Q<0.9
7	NAG	B	501	14/15	0.88	0.21	37,45,50,55	0
5	EDO	B	511	4/4	0.94	0.13	28,35,39,43	0
5	EDO	A	513	4/4	0.94	0.15	27,30,38,43	0
6	PC	B	510	11/11	0.95	0.09	27,34,38,42	0
5	EDO	B	509	4/4	0.95	0.09	33,35,38,38	0
6	PC	A	512	11/11	0.95	0.12	24,33,38,38	0
5	EDO	A	511	4/4	0.97	0.12	20,22,24,31	0
4	ZN	B	507	1/1	0.98	0.04	31,31,31,31	0
5	EDO	A	510	4/4	0.99	0.08	25,26,26,27	0
4	ZN	A	509	1/1	1.00	0.05	27,27,27,27	0
4	ZN	B	508	1/1	1.00	0.05	33,33,33,33	0

Continued on next page...

Continued from previous page...

Mol	Type	Chain	Res	Atoms	RSCC	RSR	B-factors(\AA^2)	Q<0.9
4	ZN	A	508	1/1	1.00	0.07	26,26,26,26	0

6.5 Other polymers [i](#)

There are no such residues in this entry.