



# wwPDB X-ray Structure Validation Summary Report ⓘ

Jan 7, 2024 – 04:18 pm GMT

PDB ID : 6EGU  
Title : Structure of RVFV envelope protein Gc in postfusion conformation in complex with 1,2-dipropionyl-sn-glycero-3-phosphocholine  
Authors : Guardado-Calvo, P.; Rey, F.A.  
Deposited on : 2017-09-12  
Resolution : 2.30 Å (reported)

This is a wwPDB X-ray Structure Validation Summary Report for a publicly released PDB entry.

We welcome your comments at [validation@mail.wwpdb.org](mailto:validation@mail.wwpdb.org)

A user guide is available at

<https://www.wwpdb.org/validation/2017/XrayValidationReportHelp>

with specific help available everywhere you see the ⓘ symbol.

The types of validation reports are described at

<http://www.wwpdb.org/validation/2017/FAQs#types>.

---

The following versions of software and data (see [references ⓘ](#)) were used in the production of this report:

MolProbity : 4.02b-467  
Mogul : 1.8.4, CSD as541be (2020)  
Xtriage (Phenix) : 1.13  
EDS : 2.36  
buster-report : 1.1.7 (2018)  
Percentile statistics : 20191225.v01 (using entries in the PDB archive December 25th 2019)  
Refmac : 5.8.0158  
CCP4 : 7.0.044 (Gargrove)  
Ideal geometry (proteins) : Engh & Huber (2001)  
Ideal geometry (DNA, RNA) : Parkinson et al. (1996)  
Validation Pipeline (wwPDB-VP) : 2.36

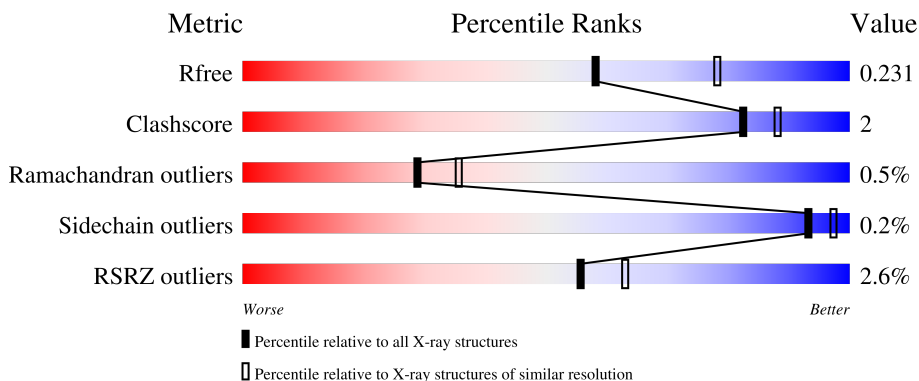
# 1 Overall quality at a glance

The following experimental techniques were used to determine the structure:

*X-RAY DIFFRACTION*

The reported resolution of this entry is 2.30 Å.

Percentile scores (ranging between 0-100) for global validation metrics of the entry are shown in the following graphic. The table shows the number of entries on which the scores are based.



Metric	Whole archive (#Entries)	Similar resolution (#Entries, resolution range(Å))
$R_{free}$	130704	5042 (2.30-2.30)
Clashscore	141614	5643 (2.30-2.30)
Ramachandran outliers	138981	5575 (2.30-2.30)
Sidechain outliers	138945	5575 (2.30-2.30)
RSRZ outliers	127900	4938 (2.30-2.30)

The table below summarises the geometric issues observed across the polymeric chains and their fit to the electron density. The red, orange, yellow and green segments of the lower bar indicate the fraction of residues that contain outliers for  $\geq 3$ , 2, 1 and 0 types of geometric quality criteria respectively. A grey segment represents the fraction of residues that are not modelled. The numeric value for each fraction is indicated below the corresponding segment, with a dot representing fractions  $\leq 5\%$ . The upper red bar (where present) indicates the fraction of residues that have poor fit to the electron density. The numeric value is given above the bar.

Mol	Chain	Length	Quality of chain
1	A	531	 2% (red), 79% (green), 5% (yellow), 17% (grey)
1	B	531	 2% (red), 76% (green), 7% (yellow), 17% (grey)
1	C	531	 3% (red), 79% (green), 5% (yellow), 16% (grey)
2	D	2	 50% (green), 50% (yellow)
2	E	2	 50% (yellow), 50% (orange)

The following table lists non-polymeric compounds, carbohydrate monomers and non-standard residues in protein, DNA, RNA chains that are outliers for geometric or electron-density-fit criteria:

<b>Mol</b>	<b>Type</b>	<b>Chain</b>	<b>Res</b>	<b>Chirality</b>	<b>Geometry</b>	<b>Clashes</b>	<b>Electron density</b>
4	43Y	A	1305	X	-	-	-
4	43Y	B	1305	X	-	-	-
4	43Y	C	1303	X	-	-	-

## 2 Entry composition [i](#)

There are 5 unique types of molecules in this entry. The entry contains 11294 atoms, of which 0 are hydrogens and 0 are deuteriums.

In the tables below, the ZeroOcc column contains the number of atoms modelled with zero occupancy, the AltConf column contains the number of residues with at least one atom in alternate conformation and the Trace column contains the number of residues modelled with at most 2 atoms.

- Molecule 1 is a protein called RVFV ENVELOPE PROTEIN GC.

Mol	Chain	Residues	Atoms					ZeroOcc	AltConf	Trace
			Total	C	N	O	S			
1	A	443	3368	2087	581	671	29	0	0	0
1	B	440	3354	2078	580	667	29	0	2	0
1	C	444	3381	2095	583	674	29	0	1	0

There are 192 discrepancies between the modelled and reference sequences:

Chain	Residue	Modelled	Actual	Comment	Reference
A	821	HIS	TRP	engineered mutation	UNP A2T087
A	1159	ASP	-	expression tag	UNP A2T087
A	1160	PRO	-	expression tag	UNP A2T087
A	1161	THR	-	expression tag	UNP A2T087
A	1162	GLY	-	expression tag	UNP A2T087
A	1163	ASP	-	expression tag	UNP A2T087
A	1164	TYR	-	expression tag	UNP A2T087
A	1165	LYS	-	expression tag	UNP A2T087
A	1166	ASP	-	expression tag	UNP A2T087
A	1167	ASP	-	expression tag	UNP A2T087
A	1168	ASP	-	expression tag	UNP A2T087
A	1169	ASP	-	expression tag	UNP A2T087
A	1170	ALA	-	expression tag	UNP A2T087
A	1171	GLY	-	expression tag	UNP A2T087
A	1172	PRO	-	expression tag	UNP A2T087
A	1173	GLY	-	expression tag	UNP A2T087
A	1174	TRP	-	expression tag	UNP A2T087
A	1175	SER	-	expression tag	UNP A2T087
A	1176	HIS	-	expression tag	UNP A2T087
A	1177	PRO	-	expression tag	UNP A2T087
A	1178	GLN	-	expression tag	UNP A2T087
A	1179	PHE	-	expression tag	UNP A2T087
A	1180	GLU	-	expression tag	UNP A2T087

*Continued on next page...*

*Continued from previous page...*

Chain	Residue	Modelled	Actual	Comment	Reference
A	1181	LYS	-	expression tag	UNP A2T087
A	1182	GLY	-	expression tag	UNP A2T087
A	1183	GLY	-	expression tag	UNP A2T087
A	1184	GLY	-	expression tag	UNP A2T087
A	1185	SER	-	expression tag	UNP A2T087
A	1186	GLY	-	expression tag	UNP A2T087
A	1187	GLY	-	expression tag	UNP A2T087
A	1188	GLY	-	expression tag	UNP A2T087
A	1189	SER	-	expression tag	UNP A2T087
A	1190	GLY	-	expression tag	UNP A2T087
A	1191	GLY	-	expression tag	UNP A2T087
A	1192	GLY	-	expression tag	UNP A2T087
A	1193	SER	-	expression tag	UNP A2T087
A	1194	TRP	-	expression tag	UNP A2T087
A	1195	SER	-	expression tag	UNP A2T087
A	1196	HIS	-	expression tag	UNP A2T087
A	1197	PRO	-	expression tag	UNP A2T087
A	1198	GLN	-	expression tag	UNP A2T087
A	1199	PHE	-	expression tag	UNP A2T087
A	1200	GLU	-	expression tag	UNP A2T087
A	1201	LYS	-	expression tag	UNP A2T087
A	1202	GLY	-	expression tag	UNP A2T087
A	1203	GLY	-	expression tag	UNP A2T087
A	1204	GLY	-	expression tag	UNP A2T087
A	1205	SER	-	expression tag	UNP A2T087
A	1206	GLY	-	expression tag	UNP A2T087
A	1207	GLY	-	expression tag	UNP A2T087
A	1208	GLY	-	expression tag	UNP A2T087
A	1209	SER	-	expression tag	UNP A2T087
A	1210	GLY	-	expression tag	UNP A2T087
A	1211	GLY	-	expression tag	UNP A2T087
A	1212	GLY	-	expression tag	UNP A2T087
A	1213	SER	-	expression tag	UNP A2T087
A	1214	TRP	-	expression tag	UNP A2T087
A	1215	SER	-	expression tag	UNP A2T087
A	1216	HIS	-	expression tag	UNP A2T087
A	1217	PRO	-	expression tag	UNP A2T087
A	1218	GLN	-	expression tag	UNP A2T087
A	1219	PHE	-	expression tag	UNP A2T087
A	1220	GLU	-	expression tag	UNP A2T087
A	1221	LYS	-	expression tag	UNP A2T087
B	821	HIS	TRP	engineered mutation	UNP A2T087

*Continued on next page...*

*Continued from previous page...*

Chain	Residue	Modelled	Actual	Comment	Reference
B	1159	ASP	-	expression tag	UNP A2T087
B	1160	PRO	-	expression tag	UNP A2T087
B	1161	THR	-	expression tag	UNP A2T087
B	1162	GLY	-	expression tag	UNP A2T087
B	1163	ASP	-	expression tag	UNP A2T087
B	1164	TYR	-	expression tag	UNP A2T087
B	1165	LYS	-	expression tag	UNP A2T087
B	1166	ASP	-	expression tag	UNP A2T087
B	1167	ASP	-	expression tag	UNP A2T087
B	1168	ASP	-	expression tag	UNP A2T087
B	1169	ASP	-	expression tag	UNP A2T087
B	1170	ALA	-	expression tag	UNP A2T087
B	1171	GLY	-	expression tag	UNP A2T087
B	1172	PRO	-	expression tag	UNP A2T087
B	1173	GLY	-	expression tag	UNP A2T087
B	1174	TRP	-	expression tag	UNP A2T087
B	1175	SER	-	expression tag	UNP A2T087
B	1176	HIS	-	expression tag	UNP A2T087
B	1177	PRO	-	expression tag	UNP A2T087
B	1178	GLN	-	expression tag	UNP A2T087
B	1179	PHE	-	expression tag	UNP A2T087
B	1180	GLU	-	expression tag	UNP A2T087
B	1181	LYS	-	expression tag	UNP A2T087
B	1182	GLY	-	expression tag	UNP A2T087
B	1183	GLY	-	expression tag	UNP A2T087
B	1184	GLY	-	expression tag	UNP A2T087
B	1185	SER	-	expression tag	UNP A2T087
B	1186	GLY	-	expression tag	UNP A2T087
B	1187	GLY	-	expression tag	UNP A2T087
B	1188	GLY	-	expression tag	UNP A2T087
B	1189	SER	-	expression tag	UNP A2T087
B	1190	GLY	-	expression tag	UNP A2T087
B	1191	GLY	-	expression tag	UNP A2T087
B	1192	GLY	-	expression tag	UNP A2T087
B	1193	SER	-	expression tag	UNP A2T087
B	1194	TRP	-	expression tag	UNP A2T087
B	1195	SER	-	expression tag	UNP A2T087
B	1196	HIS	-	expression tag	UNP A2T087
B	1197	PRO	-	expression tag	UNP A2T087
B	1198	GLN	-	expression tag	UNP A2T087
B	1199	PHE	-	expression tag	UNP A2T087
B	1200	GLU	-	expression tag	UNP A2T087

*Continued on next page...*

*Continued from previous page...*

Chain	Residue	Modelled	Actual	Comment	Reference
B	1201	LYS	-	expression tag	UNP A2T087
B	1202	GLY	-	expression tag	UNP A2T087
B	1203	GLY	-	expression tag	UNP A2T087
B	1204	GLY	-	expression tag	UNP A2T087
B	1205	SER	-	expression tag	UNP A2T087
B	1206	GLY	-	expression tag	UNP A2T087
B	1207	GLY	-	expression tag	UNP A2T087
B	1208	GLY	-	expression tag	UNP A2T087
B	1209	SER	-	expression tag	UNP A2T087
B	1210	GLY	-	expression tag	UNP A2T087
B	1211	GLY	-	expression tag	UNP A2T087
B	1212	GLY	-	expression tag	UNP A2T087
B	1213	SER	-	expression tag	UNP A2T087
B	1214	TRP	-	expression tag	UNP A2T087
B	1215	SER	-	expression tag	UNP A2T087
B	1216	HIS	-	expression tag	UNP A2T087
B	1217	PRO	-	expression tag	UNP A2T087
B	1218	GLN	-	expression tag	UNP A2T087
B	1219	PHE	-	expression tag	UNP A2T087
B	1220	GLU	-	expression tag	UNP A2T087
B	1221	LYS	-	expression tag	UNP A2T087
C	821	HIS	TRP	engineered mutation	UNP A2T087
C	1159	ASP	-	expression tag	UNP A2T087
C	1160	PRO	-	expression tag	UNP A2T087
C	1161	THR	-	expression tag	UNP A2T087
C	1162	GLY	-	expression tag	UNP A2T087
C	1163	ASP	-	expression tag	UNP A2T087
C	1164	TYR	-	expression tag	UNP A2T087
C	1165	LYS	-	expression tag	UNP A2T087
C	1166	ASP	-	expression tag	UNP A2T087
C	1167	ASP	-	expression tag	UNP A2T087
C	1168	ASP	-	expression tag	UNP A2T087
C	1169	ASP	-	expression tag	UNP A2T087
C	1170	ALA	-	expression tag	UNP A2T087
C	1171	GLY	-	expression tag	UNP A2T087
C	1172	PRO	-	expression tag	UNP A2T087
C	1173	GLY	-	expression tag	UNP A2T087
C	1174	TRP	-	expression tag	UNP A2T087
C	1175	SER	-	expression tag	UNP A2T087
C	1176	HIS	-	expression tag	UNP A2T087
C	1177	PRO	-	expression tag	UNP A2T087
C	1178	GLN	-	expression tag	UNP A2T087

*Continued on next page...*

*Continued from previous page...*

Chain	Residue	Modelled	Actual	Comment	Reference
C	1179	PHE	-	expression tag	UNP A2T087
C	1180	GLU	-	expression tag	UNP A2T087
C	1181	LYS	-	expression tag	UNP A2T087
C	1182	GLY	-	expression tag	UNP A2T087
C	1183	GLY	-	expression tag	UNP A2T087
C	1184	GLY	-	expression tag	UNP A2T087
C	1185	SER	-	expression tag	UNP A2T087
C	1186	GLY	-	expression tag	UNP A2T087
C	1187	GLY	-	expression tag	UNP A2T087
C	1188	GLY	-	expression tag	UNP A2T087
C	1189	SER	-	expression tag	UNP A2T087
C	1190	GLY	-	expression tag	UNP A2T087
C	1191	GLY	-	expression tag	UNP A2T087
C	1192	GLY	-	expression tag	UNP A2T087
C	1193	SER	-	expression tag	UNP A2T087
C	1194	TRP	-	expression tag	UNP A2T087
C	1195	SER	-	expression tag	UNP A2T087
C	1196	HIS	-	expression tag	UNP A2T087
C	1197	PRO	-	expression tag	UNP A2T087
C	1198	GLN	-	expression tag	UNP A2T087
C	1199	PHE	-	expression tag	UNP A2T087
C	1200	GLU	-	expression tag	UNP A2T087
C	1201	LYS	-	expression tag	UNP A2T087
C	1202	GLY	-	expression tag	UNP A2T087
C	1203	GLY	-	expression tag	UNP A2T087
C	1204	GLY	-	expression tag	UNP A2T087
C	1205	SER	-	expression tag	UNP A2T087
C	1206	GLY	-	expression tag	UNP A2T087
C	1207	GLY	-	expression tag	UNP A2T087
C	1208	GLY	-	expression tag	UNP A2T087
C	1209	SER	-	expression tag	UNP A2T087
C	1210	GLY	-	expression tag	UNP A2T087
C	1211	GLY	-	expression tag	UNP A2T087
C	1212	GLY	-	expression tag	UNP A2T087
C	1213	SER	-	expression tag	UNP A2T087
C	1214	TRP	-	expression tag	UNP A2T087
C	1215	SER	-	expression tag	UNP A2T087
C	1216	HIS	-	expression tag	UNP A2T087
C	1217	PRO	-	expression tag	UNP A2T087
C	1218	GLN	-	expression tag	UNP A2T087
C	1219	PHE	-	expression tag	UNP A2T087
C	1220	GLU	-	expression tag	UNP A2T087

*Continued on next page...*



Continued from previous page...

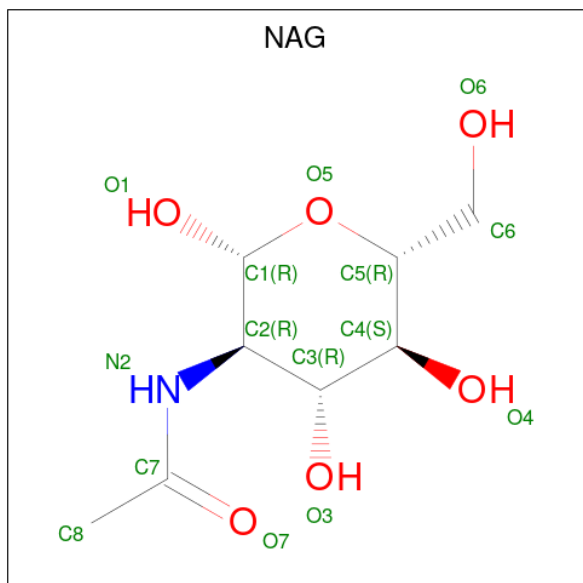
Chain	Residue	Modelled	Actual	Comment	Reference
C	1221	LYS	-	expression tag	UNP A2T087

- Molecule 2 is an oligosaccharide called beta-L-fucopyranose-(1-6)-2-acetamido-2-deoxy-beta-D-glucopyranose.



Mol	Chain	Residues	Atoms				ZeroOcc	AltConf	Trace
			Total	C	N	O			
2	D	2	Total	C	N	O	0	0	0
			24	14	1	9			
2	E	2	Total	C	N	O	0	0	0
			24	14	1	9			

- Molecule 3 is 2-acetamido-2-deoxy-beta-D-glucopyranose (three-letter code: NAG) (formula: C<sub>8</sub>H<sub>15</sub>NO<sub>6</sub>).



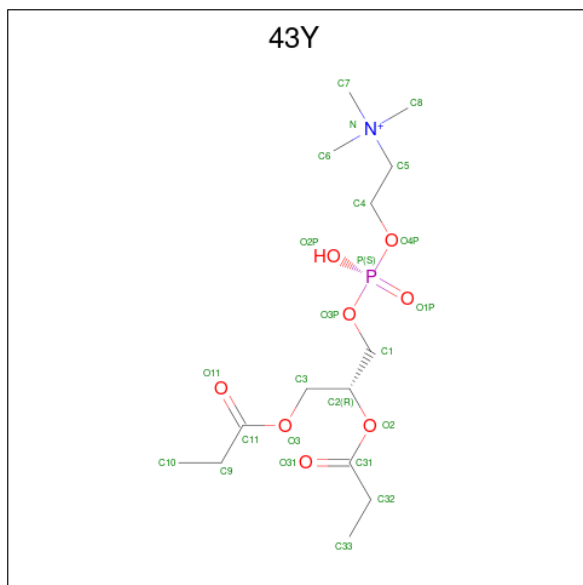
Mol	Chain	Residues	Atoms				ZeroOcc	AltConf
			Total	C	N	O		
3	A	1	Total	C	N	O	0	0
			14	8	1	5		
3	A	1	Total	C	N	O	0	0
			14	8	1	5		
3	B	1	Total	C	N	O	0	0
			14	8	1	5		

Continued on next page...

Continued from previous page...

Mol	Chain	Residues	Atoms				ZeroOcc	AltConf
3	B	1	Total	C	N	O	0	0
			14	8	1	5		
3	C	1	Total	C	N	O	0	0
			14	8	1	5		
3	C	1	Total	C	N	O	0	0
			14	8	1	5		

- Molecule 4 is [(2R)-3-[oxidanyl-[2-(trimethyl- $\text{N}^{\{4\}}$ -azanyl)ethoxy]phosphoryl]oxy-2-propa noyloxy-propyl] propanoate (three-letter code: 43Y) (formula:  $\text{C}_{14}\text{H}_{29}\text{NO}_8\text{P}$ ).



Mol	Chain	Residues	Atoms					ZeroOcc	AltConf
4	A	1	Total	C	N	O	P	0	0
			24	14	1	8	1		
4	B	1	Total	C	N	O	P	0	0
			19	11	1	6	1		
4	C	1	Total	C	N	O	P	0	0
			24	14	1	8	1		

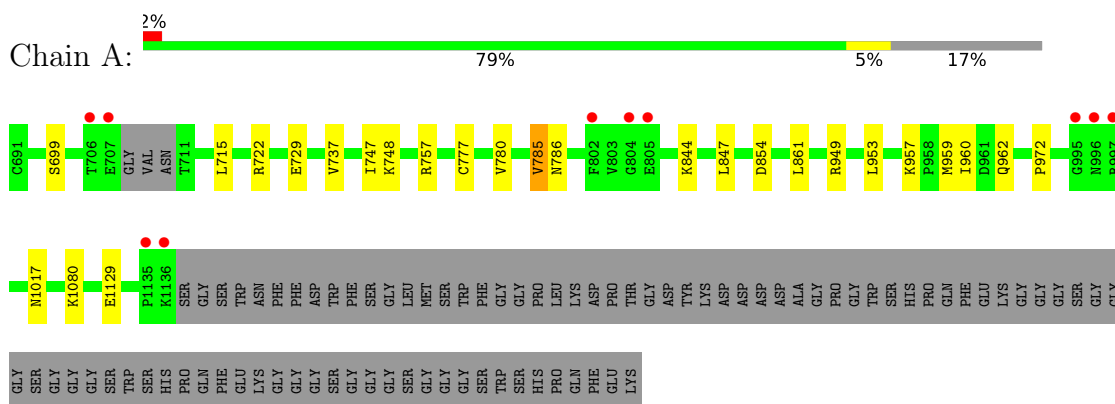
- Molecule 5 is water.

Mol	Chain	Residues	Atoms		ZeroOcc	AltConf
5	A	356	Total	O	0	0
			356	356		
5	B	330	Total	O	0	0
			330	330		
5	C	306	Total	O	0	0
			306	306		

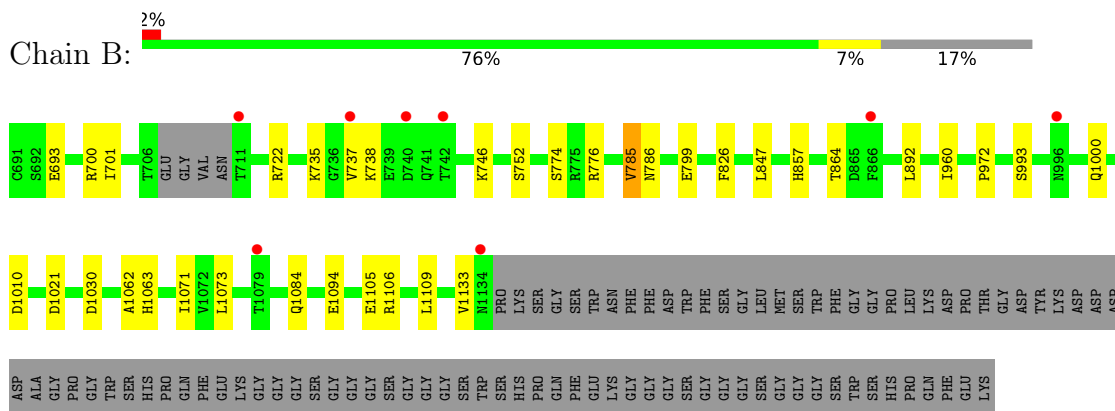
### 3 Residue-property plots [i](#)

These plots are drawn for all protein, RNA, DNA and oligosaccharide chains in the entry. The first graphic for a chain summarises the proportions of the various outlier classes displayed in the second graphic. The second graphic shows the sequence view annotated by issues in geometry and electron density. Residues are color-coded according to the number of geometric quality criteria for which they contain at least one outlier: green = 0, yellow = 1, orange = 2 and red = 3 or more. A red dot above a residue indicates a poor fit to the electron density ( $RSRZ > 2$ ). Stretches of 2 or more consecutive residues without any outlier are shown as a green connector. Residues present in the sample, but not in the model, are shown in grey.

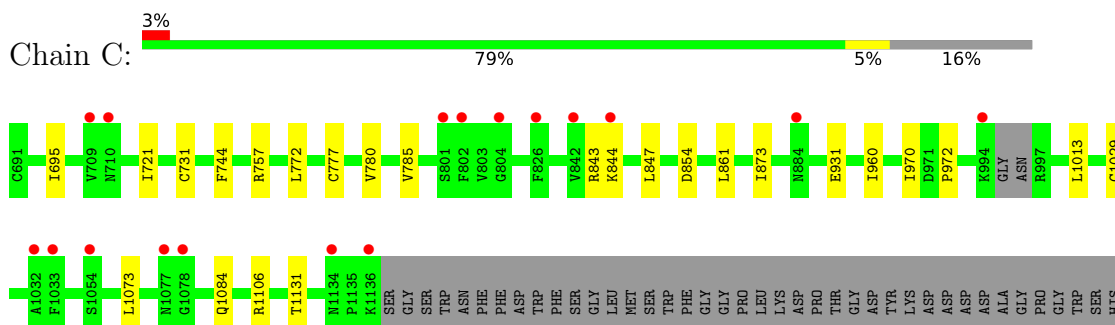
#### • Molecule 1: RVFV ENVELOPE PROTEIN GC



#### • Molecule 1: RVFV ENVELOPE PROTEIN GC



#### • Molecule 1: RVFV ENVELOPE PROTEIN GC





## 4 Data and refinement statistics i

Property	Value	Source
Space group	P 1 21 1	Depositor
Cell constants a, b, c, $\alpha$ , $\beta$ , $\gamma$	64.57Å 195.73Å 65.50Å 90.00° 113.96° 90.00°	Depositor
Resolution (Å)	37.88 – 2.30 37.88 – 2.30	Depositor EDS
% Data completeness (in resolution range)	99.9 (37.88-2.30) 99.9 (37.88-2.30)	Depositor EDS
$R_{merge}$	0.17	Depositor
$R_{sym}$	(Not available)	Depositor
$\langle I/\sigma(I) \rangle$ <sup>1</sup>	2.16 (at 2.29Å)	Xtrriage
Refinement program	PHENIX 1.9_1692	Depositor
R, $R_{free}$	0.180 , 0.232 0.182 , 0.231	Depositor DCC
$R_{free}$ test set	3306 reflections (5.04%)	wwPDB-VP
Wilson B-factor (Å <sup>2</sup> )	21.1	Xtrriage
Anisotropy	0.625	Xtrriage
Bulk solvent $k_{sol}$ (e/Å <sup>3</sup> ), $B_{sol}$ (Å <sup>2</sup> )	0.29 , 43.5	EDS
L-test for twinning <sup>2</sup>	$\langle  L  \rangle = 0.49$ , $\langle L^2 \rangle = 0.32$	Xtrriage
Estimated twinning fraction	0.026 for l,-k,h	Xtrriage
$F_o, F_c$ correlation	0.93	EDS
Total number of atoms	11294	wwPDB-VP
Average B, all atoms (Å <sup>2</sup> )	29.0	wwPDB-VP

Xtrriage's analysis on translational NCS is as follows: *The largest off-origin peak in the Patterson function is 3.66% of the height of the origin peak. No significant pseudotranslation is detected.*

<sup>1</sup>Intensities estimated from amplitudes.

<sup>2</sup>Theoretical values of  $\langle |L| \rangle$ ,  $\langle L^2 \rangle$  for acentric reflections are 0.5, 0.333 respectively for untwinned datasets, and 0.375, 0.2 for perfectly twinned datasets.

## 5 Model quality [i](#)

### 5.1 Standard geometry [i](#)

Bond lengths and bond angles in the following residue types are not validated in this section: 43Y, FUL, NAG

The Z score for a bond length (or angle) is the number of standard deviations the observed value is removed from the expected value. A bond length (or angle) with  $|Z| > 5$  is considered an outlier worth inspection. RMSZ is the root-mean-square of all Z scores of the bond lengths (or angles).

Mol	Chain	Bond lengths		Bond angles	
		RMSZ	# Z  >5	RMSZ	# Z  >5
1	A	0.27	0/3428	0.43	0/4631
1	B	0.27	0/3419	0.43	0/4618
1	C	0.26	0/3441	0.42	0/4649
All	All	0.27	0/10288	0.43	0/13898

There are no bond length outliers.

There are no bond angle outliers.

There are no chirality outliers.

There are no planarity outliers.

### 5.2 Too-close contacts [i](#)

In the following table, the Non-H and H(model) columns list the number of non-hydrogen atoms and hydrogen atoms in the chain respectively. The H(added) column lists the number of hydrogen atoms added and optimized by MolProbity. The Clashes column lists the number of clashes within the asymmetric unit, whereas Symm-Clashes lists symmetry-related clashes.

Mol	Chain	Non-H	H(model)	H(added)	Clashes	Symm-Clashes
1	A	3368	0	3235	14	0
1	B	3354	0	3227	20	0
1	C	3381	0	3249	14	0
2	D	24	0	22	0	0
2	E	24	0	22	1	0
3	A	28	0	26	0	0
3	B	28	0	26	0	0
3	C	28	0	26	0	0
4	A	24	0	29	3	0
4	B	19	0	22	1	0

*Continued on next page...*

Continued from previous page...

Mol	Chain	Non-H	H(model)	H(added)	Clashes	Symm-Clashes
4	C	24	0	29	3	0
5	A	356	0	0	1	0
5	B	330	0	0	0	0
5	C	306	0	0	1	0
All	All	11294	0	9913	50	0

The all-atom clashscore is defined as the number of clashes found per 1000 atoms (including hydrogen atoms). The all-atom clashscore for this structure is 2.

The worst 5 of 50 close contacts within the same asymmetric unit are listed below, sorted by their clash magnitude.

Atom-1	Atom-2	Interatomic distance (Å)	Clash overlap (Å)
1:B:1030:ASP:OD1	1:B:1106:ARG:NH2	2.25	0.68
1:A:785:VAL:HG13	1:A:786:ASN:H	1.57	0.67
1:C:861:LEU:HD12	1:C:873:ILE:HD11	1.76	0.67
1:B:735:LYS:HE3	1:B:1021:ASP:HA	1.79	0.65
1:C:1029:CYS:O	1:C:1106:ARG:NH2	2.31	0.63

There are no symmetry-related clashes.

## 5.3 Torsion angles [i](#)

### 5.3.1 Protein backbone [i](#)

In the following table, the Percentiles column shows the percent Ramachandran outliers of the chain as a percentile score with respect to all X-ray entries followed by that with respect to entries of similar resolution.

The Analysed column shows the number of residues for which the backbone conformation was analysed, and the total number of residues.

Mol	Chain	Analysed	Favoured	Allowed	Outliers	Percentiles	
1	A	439/531 (83%)	427 (97%)	10 (2%)	2 (0%)	29	35
1	B	438/531 (82%)	423 (97%)	13 (3%)	2 (0%)	29	35
1	C	441/531 (83%)	427 (97%)	12 (3%)	2 (0%)	29	35
All	All	1318/1593 (83%)	1277 (97%)	35 (3%)	6 (0%)	29	35

5 of 6 Ramachandran outliers are listed below:

Mol	Chain	Res	Type
1	A	785	VAL
1	B	785	VAL
1	A	960	ILE
1	B	960	ILE
1	C	785	VAL

### 5.3.2 Protein sidechains [i](#)

In the following table, the Percentiles column shows the percent sidechain outliers of the chain as a percentile score with respect to all X-ray entries followed by that with respect to entries of similar resolution.

The Analysed column shows the number of residues for which the sidechain conformation was analysed, and the total number of residues.

Mol	Chain	Analysed	Rotameric	Outliers	Percentiles	
1	A	382/443 (86%)	380 (100%)	2 (0%)	88	95
1	B	381/443 (86%)	381 (100%)	0	100	100
1	C	384/443 (87%)	384 (100%)	0	100	100
All	All	1147/1329 (86%)	1145 (100%)	2 (0%)	93	97

All (2) residues with a non-rotameric sidechain are listed below:

Mol	Chain	Res	Type
1	A	699	SER
1	A	722	ARG

Sometimes sidechains can be flipped to improve hydrogen bonding and reduce clashes. There are no such sidechains identified.

### 5.3.3 RNA [i](#)

There are no RNA molecules in this entry.

## 5.4 Non-standard residues in protein, DNA, RNA chains [i](#)

There are no non-standard protein/DNA/RNA residues in this entry.



## 5.5 Carbohydrates i

4 monosaccharides are modelled in this entry.

In the following table, the Counts columns list the number of bonds (or angles) for which Mogul statistics could be retrieved, the number of bonds (or angles) that are observed in the model and the number of bonds (or angles) that are defined in the Chemical Component Dictionary. The Link column lists molecule types, if any, to which the group is linked. The Z score for a bond length (or angle) is the number of standard deviations the observed value is removed from the expected value. A bond length (or angle) with  $|Z| > 2$  is considered an outlier worth inspection. RMSZ is the root-mean-square of all Z scores of the bond lengths (or angles).

Mol	Type	Chain	Res	Link	Bond lengths			Bond angles		
					Counts	RMSZ	# Z  > 2	Counts	RMSZ	# Z  > 2
2	NAG	D	1	1,2	14,14,15	0.46	0	17,19,21	0.44	0
2	FUL	D	2	2	10,10,11	0.86	0	14,14,16	1.15	1 (7%)
2	NAG	E	1	1,2	14,14,15	0.27	0	17,19,21	0.41	0
2	FUL	E	2	2	10,10,11	1.04	1 (10%)	14,14,16	1.34	2 (14%)

In the following table, the Chirals column lists the number of chiral outliers, the number of chiral centers analysed, the number of these observed in the model and the number defined in the Chemical Component Dictionary. Similar counts are reported in the Torsion and Rings columns. '-' means no outliers of that kind were identified.

Mol	Type	Chain	Res	Link	Chirals	Torsions	Rings
2	NAG	D	1	1,2	-	1/6/23/26	0/1/1/1
2	FUL	D	2	2	-	-	0/1/1/1
2	NAG	E	1	1,2	-	0/6/23/26	0/1/1/1
2	FUL	E	2	2	-	-	0/1/1/1

All (1) bond length outliers are listed below:

Mol	Chain	Res	Type	Atoms	Z	Observed(Å)	Ideal(Å)
2	E	2	FUL	C2-C3	2.33	1.55	1.52

All (3) bond angle outliers are listed below:

Mol	Chain	Res	Type	Atoms	Z	Observed(°)	Ideal(°)
2	E	2	FUL	C1-C2-C3	2.89	113.22	109.67
2	E	2	FUL	C1-O5-C5	2.33	118.06	112.78
2	D	2	FUL	C1-O5-C5	2.26	117.90	112.78

There are no chirality outliers.

All (1) torsion outliers are listed below:

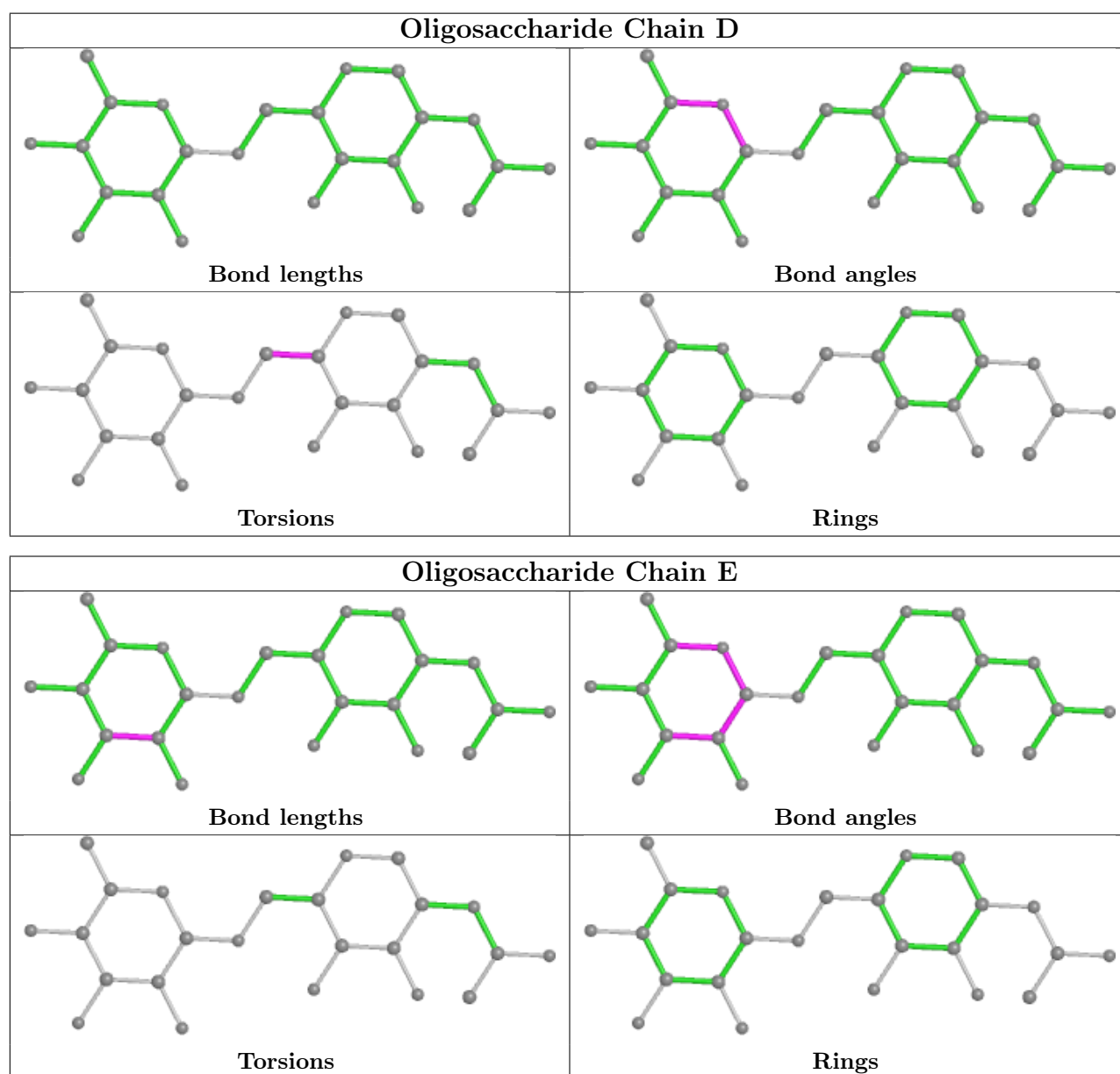
Mol	Chain	Res	Type	Atoms
2	D	1	NAG	O5-C5-C6-O6

There are no ring outliers.

2 monomers are involved in 1 short contact:

Mol	Chain	Res	Type	Clashes	Symm-Clashes
2	E	1	NAG	1	0
2	E	2	FUL	1	0

The following is a two-dimensional graphical depiction of Mogul quality analysis of bond lengths, bond angles, torsion angles, and ring geometry for oligosaccharide.



## 5.6 Ligand geometry

9 ligands are modelled in this entry.

In the following table, the Counts columns list the number of bonds (or angles) for which Mogul statistics could be retrieved, the number of bonds (or angles) that are observed in the model and the number of bonds (or angles) that are defined in the Chemical Component Dictionary. The Link column lists molecule types, if any, to which the group is linked. The Z score for a bond length (or angle) is the number of standard deviations the observed value is removed from the expected value. A bond length (or angle) with  $|Z| > 2$  is considered an outlier worth inspection. RMSZ is the root-mean-square of all Z scores of the bond lengths (or angles).

Mol	Type	Chain	Res	Link	Bond lengths			Bond angles		
					Counts	RMSZ	# Z  > 2	Counts	RMSZ	# Z  > 2
3	NAG	B	1302	1	14,14,15	0.31	0	17,19,21	0.40	0
4	43Y	B	1305	-	18,18,23	0.87	0	23,25,31	0.91	2 (8%)
3	NAG	A	1302	1	14,14,15	0.35	0	17,19,21	0.40	0
4	43Y	A	1305	-	23,23,23	1.03	1 (4%)	29,31,31	0.83	0
3	NAG	A	1301	1	14,14,15	0.27	0	17,19,21	0.44	0
3	NAG	C	1302	1	14,14,15	0.26	0	17,19,21	0.38	0
3	NAG	C	1301	1	14,14,15	0.34	0	17,19,21	0.42	0
4	43Y	C	1303	-	23,23,23	1.03	1 (4%)	29,31,31	0.83	0
3	NAG	B	1301	1	14,14,15	0.23	0	17,19,21	0.48	0

In the following table, the Chirals column lists the number of chiral outliers, the number of chiral centers analysed, the number of these observed in the model and the number defined in the Chemical Component Dictionary. Similar counts are reported in the Torsion and Rings columns. '-' means no outliers of that kind were identified.

Mol	Type	Chain	Res	Link	Chirals	Torsions	Rings
3	NAG	B	1302	1	-	0/6/23/26	0/1/1/1
4	43Y	B	1305	-	1/1/4/5	11/20/20/27	-
3	NAG	A	1302	1	-	1/6/23/26	0/1/1/1
4	43Y	A	1305	-	1/1/5/5	10/27/27/27	-
3	NAG	A	1301	1	-	0/6/23/26	0/1/1/1
3	NAG	C	1302	1	-	2/6/23/26	0/1/1/1
3	NAG	C	1301	1	-	0/6/23/26	0/1/1/1
4	43Y	C	1303	-	1/1/5/5	12/27/27/27	-
3	NAG	B	1301	1	-	3/6/23/26	0/1/1/1

All (2) bond length outliers are listed below:

Mol	Chain	Res	Type	Atoms	Z	Observed(Å)	Ideal(Å)
4	C	1303	43Y	P-O1P	3.36	1.62	1.50
4	A	1305	43Y	P-O1P	3.24	1.62	1.50

All (2) bond angle outliers are listed below:

Mol	Chain	Res	Type	Atoms	Z	Observed(°)	Ideal(°)
4	B	1305	43Y	O2-C2-C1	2.04	110.85	106.13
4	B	1305	43Y	O2-C2-C3	2.01	112.53	107.93

All (3) chirality outliers are listed below:

Mol	Chain	Res	Type	Atom
4	A	1305	43Y	C2
4	B	1305	43Y	C2
4	C	1303	43Y	C2

5 of 39 torsion outliers are listed below:

Mol	Chain	Res	Type	Atoms
4	A	1305	43Y	O4P-C4-C5-N
4	A	1305	43Y	C32-C31-O2-C2
4	B	1305	43Y	O3P-C1-C2-C3
4	B	1305	43Y	O3P-C1-C2-O2
4	B	1305	43Y	C3-C2-O2-C31

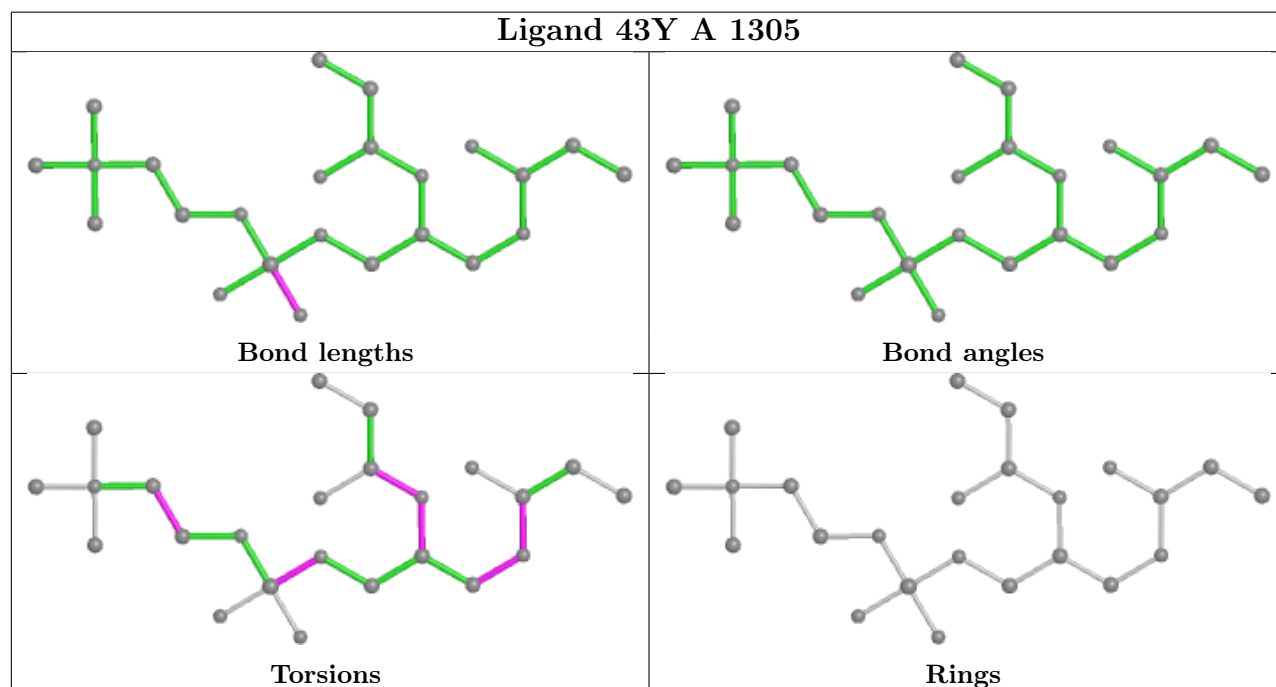
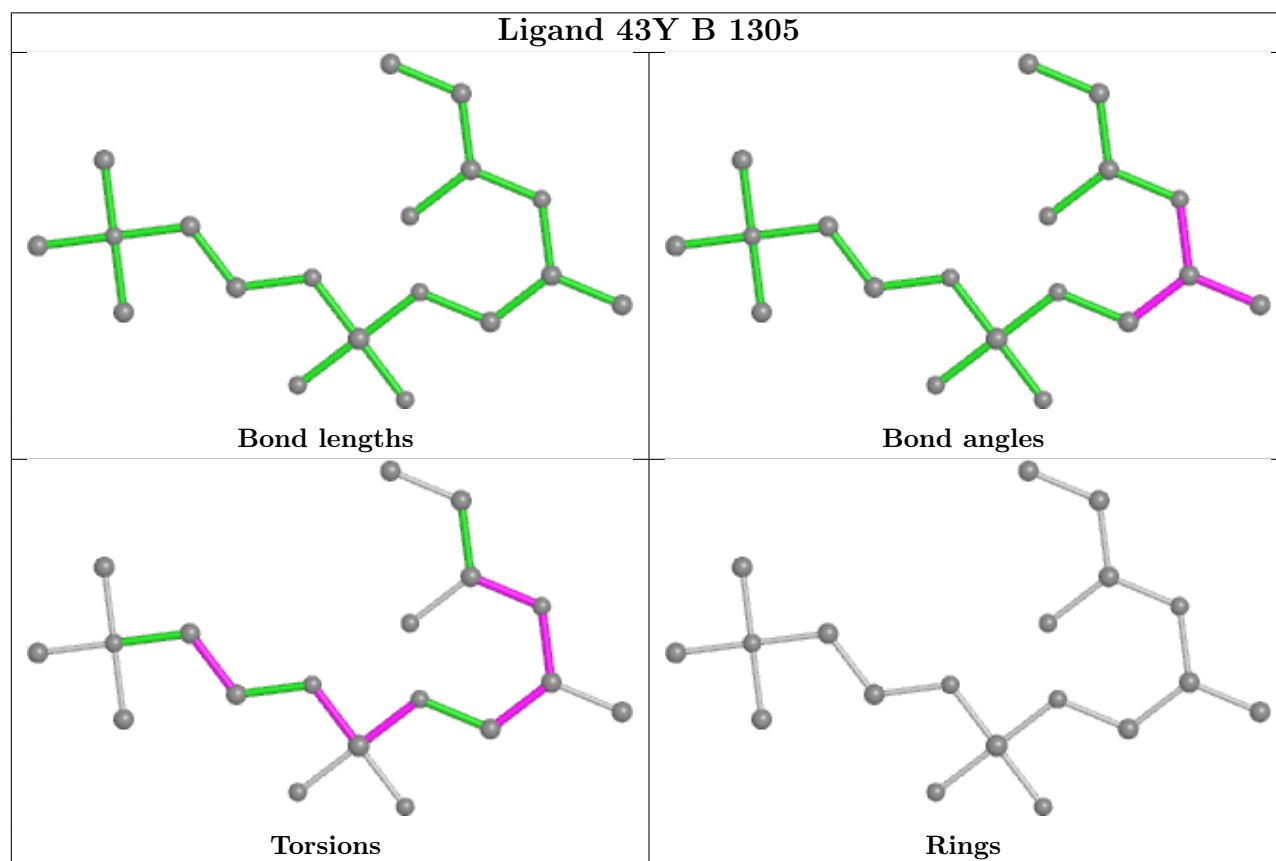
There are no ring outliers.

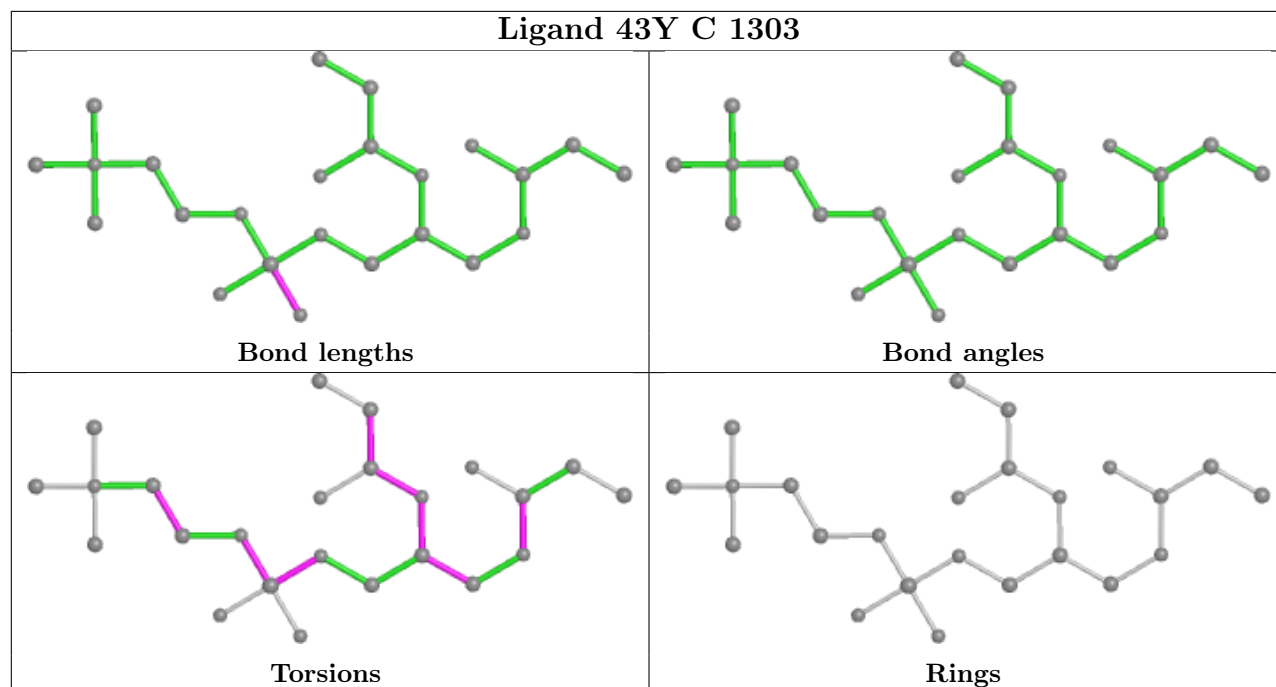
3 monomers are involved in 7 short contacts:

Mol	Chain	Res	Type	Clashes	Symm-Clashes
4	B	1305	43Y	1	0
4	A	1305	43Y	3	0
4	C	1303	43Y	3	0

The following is a two-dimensional graphical depiction of Mogul quality analysis of bond lengths, bond angles, torsion angles, and ring geometry for all instances of the Ligand of Interest. In addition, ligands with molecular weight > 250 and outliers as shown on the validation Tables will also be included. For torsion angles, if less than 5% of the Mogul distribution of torsion angles is within 10 degrees of the torsion angle in question, then that torsion angle is considered an outlier. Any bond that is central to one or more torsion angles identified as an outlier by Mogul will be highlighted in the graph. For rings, the root-mean-square deviation (RMSD) between the ring in question and similar rings identified by Mogul is calculated over all ring torsion angles. If the average RMSD is greater than 60 degrees and the minimal RMSD between the ring in question and any Mogul-identified rings is also greater than 60 degrees, then that ring is considered an outlier.

The outliers are highlighted in purple. The color gray indicates Mogul did not find sufficient equivalents in the CSD to analyse the geometry.





## 5.7 Other polymers [i](#)

There are no such residues in this entry.

## 5.8 Polymer linkage issues [i](#)

There are no chain breaks in this entry.

## 6 Fit of model and data [i](#)

### 6.1 Protein, DNA and RNA chains [i](#)

In the following table, the column labelled ‘#RSRZ > 2’ contains the number (and percentage) of RSRZ outliers, followed by percent RSRZ outliers for the chain as percentile scores relative to all X-ray entries and entries of similar resolution. The OWAB column contains the minimum, median, 95<sup>th</sup> percentile and maximum values of the occupancy-weighted average B-factor per residue. The column labelled ‘Q < 0.9’ lists the number of (and percentage) of residues with an average occupancy less than 0.9.

Mol	Chain	Analysed	<RSRZ>	#RSRZ>2	OWAB(Å <sup>2</sup> )	Q<0.9
1	A	443/531 (83%)	-0.25	10 (2%) 60 67	14, 23, 47, 92	0
1	B	440/531 (82%)	-0.19	8 (1%) 68 74	15, 25, 54, 87	0
1	C	444/531 (83%)	-0.03	17 (3%) 40 47	14, 26, 61, 128	0
All	All	1327/1593 (83%)	-0.15	35 (2%) 56 63	14, 25, 57, 128	0

The worst 5 of 35 RSRZ outliers are listed below:

Mol	Chain	Res	Type	RSRZ
1	C	710	ASN	4.5
1	A	706	THR	4.4
1	C	802	PHE	3.8
1	C	1136	LYS	3.7
1	A	804	GLY	3.5

### 6.2 Non-standard residues in protein, DNA, RNA chains [i](#)

There are no non-standard protein/DNA/RNA residues in this entry.

### 6.3 Carbohydrates [i](#)

In the following table, the Atoms column lists the number of modelled atoms in the group and the number defined in the chemical component dictionary. The B-factors column lists the minimum, median, 95<sup>th</sup> percentile and maximum values of B factors of atoms in the group. The column labelled ‘Q < 0.9’ lists the number of atoms with occupancy less than 0.9.

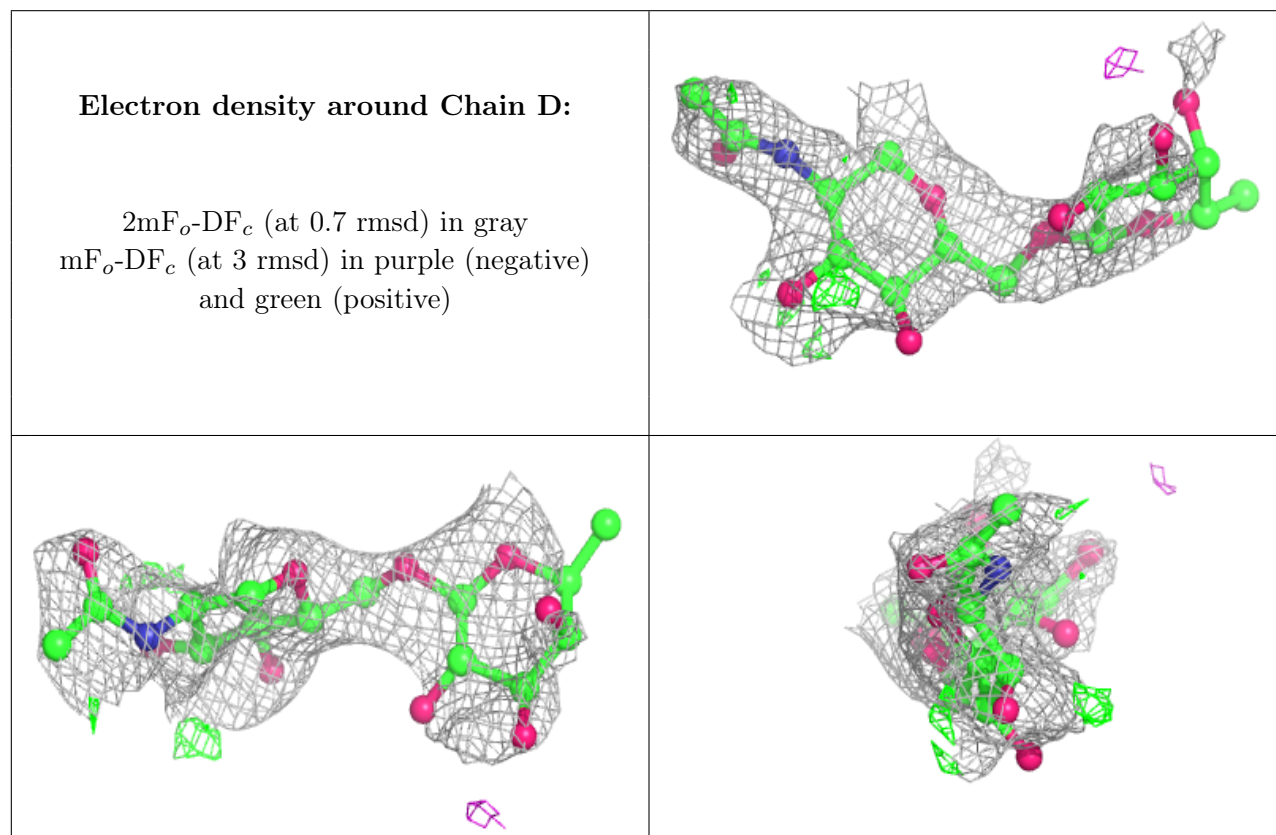
Mol	Type	Chain	Res	Atoms	RSCC	RSR	B-factors(Å <sup>2</sup> )	Q<0.9
2	FUL	D	2	10/11	0.72	0.39	65,74,77,77	0
2	FUL	E	2	10/11	0.79	0.40	69,80,91,92	0
2	NAG	D	1	14/15	0.88	0.28	45,50,59,61	0

*Continued on next page...*

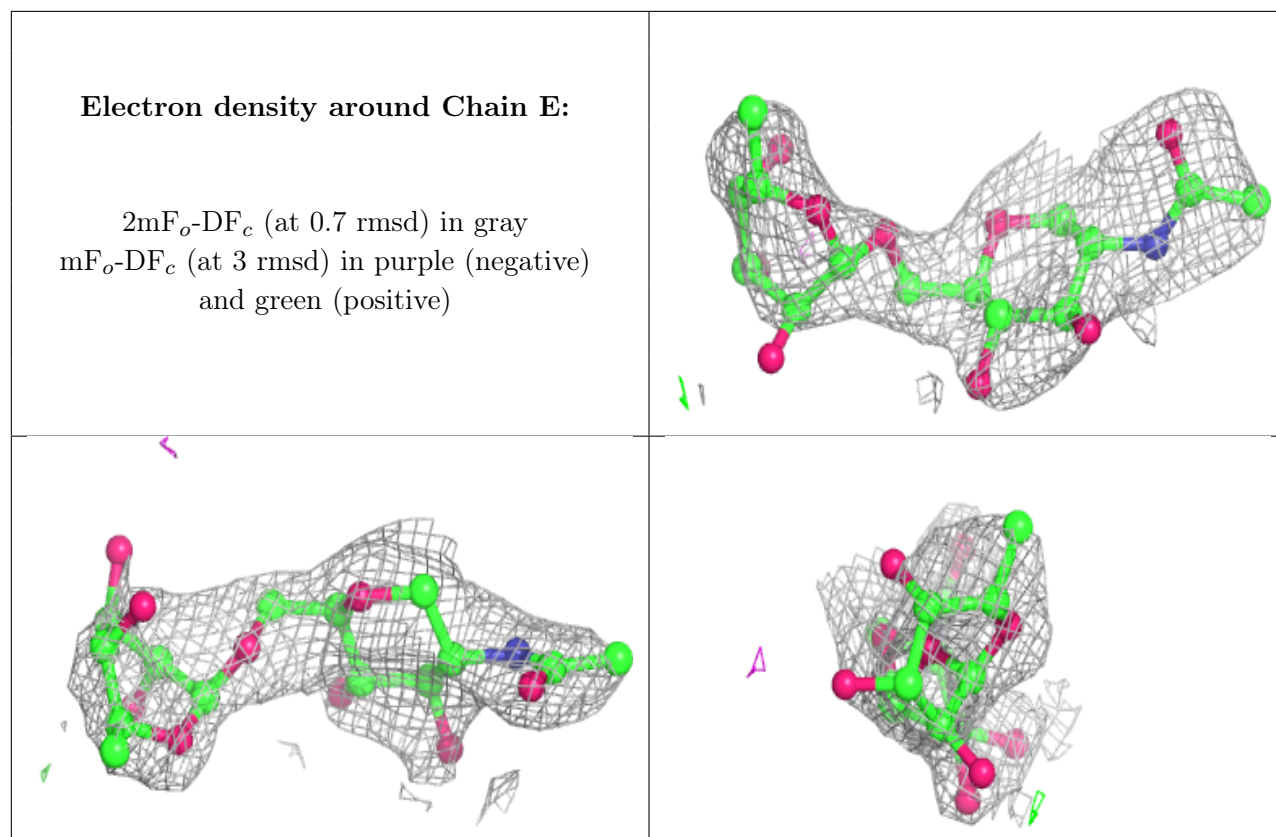
Continued from previous page...

Mol	Type	Chain	Res	Atoms	RSCC	RSR	B-factors( $\text{\AA}^2$ )	Q<0.9
2	NAG	E	1	14/15	0.89	0.25	40,44,56,63	0

The following is a graphical depiction of the model fit to experimental electron density for oligosaccharide. Each fit is shown from different orientation to approximate a three-dimensional view.







## 6.4 Ligands [i](#)

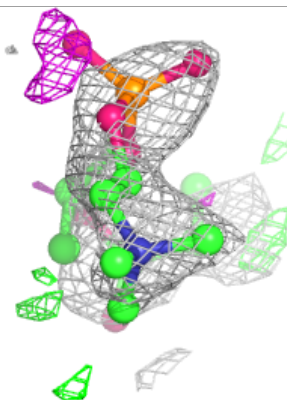
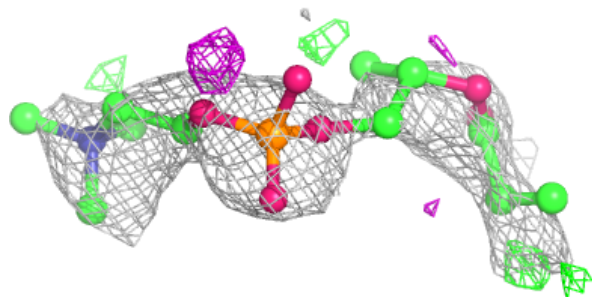
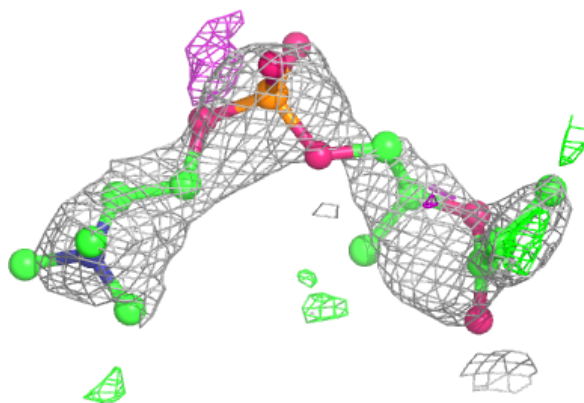
In the following table, the Atoms column lists the number of modelled atoms in the group and the number defined in the chemical component dictionary. The B-factors column lists the minimum, median, 95<sup>th</sup> percentile and maximum values of B factors of atoms in the group. The column labelled 'Q< 0.9' lists the number of atoms with occupancy less than 0.9.

Mol	Type	Chain	Res	Atoms	RSCC	RSR	B-factors( $\text{\AA}^2$ )	Q<0.9
3	NAG	A	1301	14/15	0.70	0.28	56,63,65,67	0
3	NAG	B	1301	14/15	0.73	0.39	47,58,60,60	0
4	43Y	B	1305	19/24	0.74	0.37	68,87,114,114	0
3	NAG	C	1301	14/15	0.77	0.32	55,61,66,68	0
3	NAG	C	1302	14/15	0.85	0.29	38,48,50,51	0
3	NAG	B	1302	14/15	0.85	0.18	34,41,45,48	0
4	43Y	A	1305	24/24	0.91	0.21	32,55,61,62	0
3	NAG	A	1302	14/15	0.93	0.19	31,38,40,43	0
4	43Y	C	1303	24/24	0.94	0.20	24,43,49,49	0

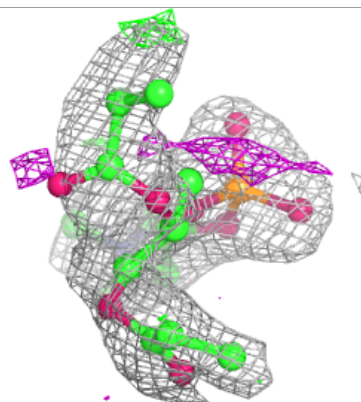
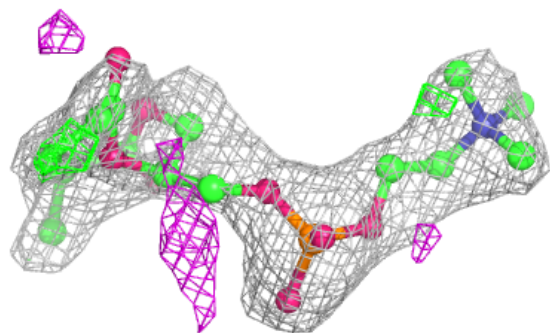
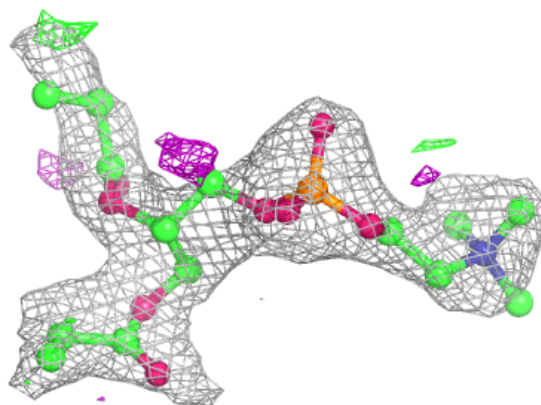
The following is a graphical depiction of the model fit to experimental electron density of all instances of the Ligand of Interest. In addition, ligands with molecular weight > 250 and outliers as shown on the geometry validation Tables will also be included. Each fit is shown from different orientation to approximate a three-dimensional view.

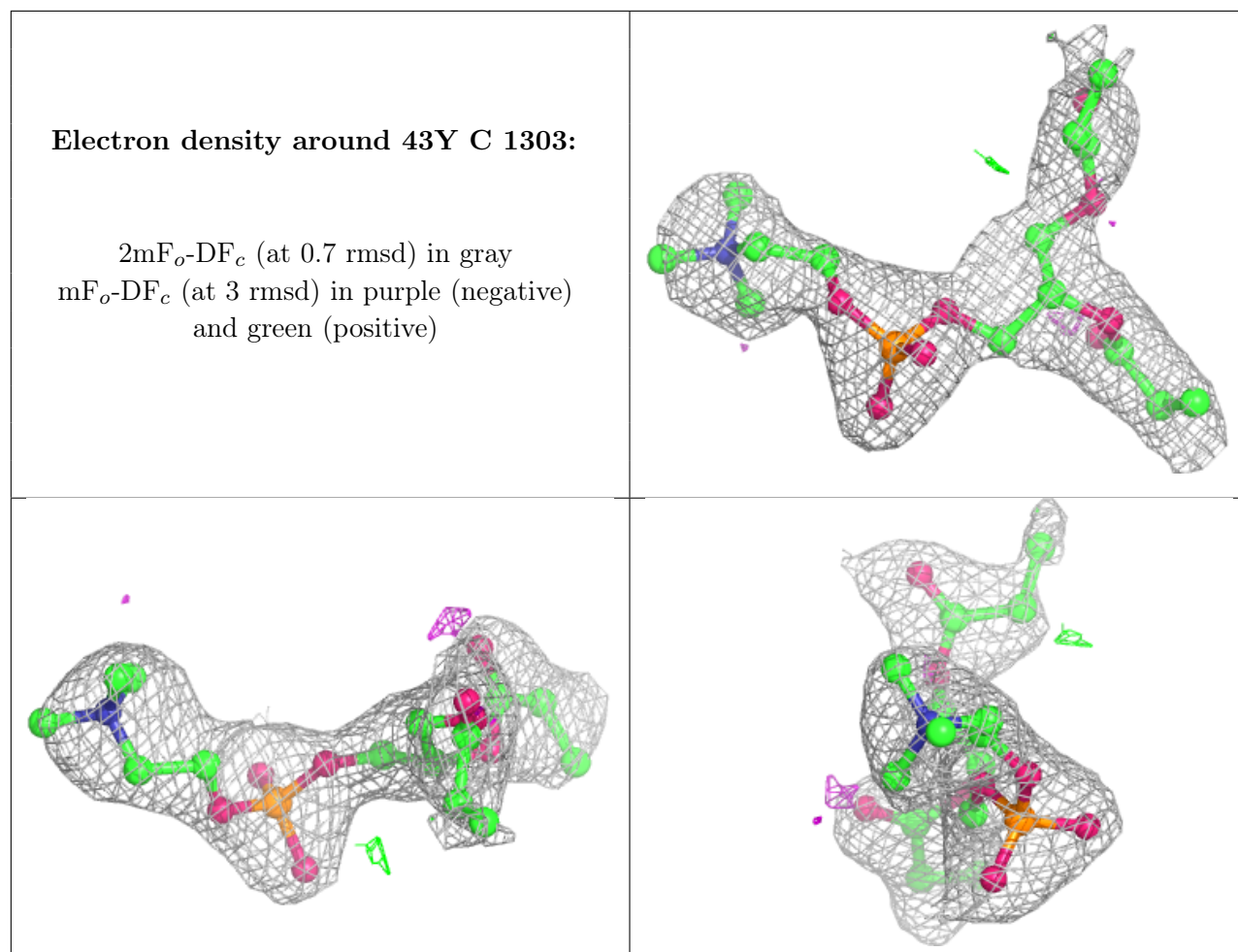
**Electron density around 43Y B 1305:**

$2mF_o-DF_c$  (at 0.7 rmsd) in gray  
 $mF_o-DF_c$  (at 3 rmsd) in purple (negative)  
and green (positive)

**Electron density around 43Y A 1305:**

$2mF_o-DF_c$  (at 0.7 rmsd) in gray  
 $mF_o-DF_c$  (at 3 rmsd) in purple (negative)  
and green (positive)





## 6.5 Other polymers [i](#)

There are no such residues in this entry.