



# Full wwPDB X-ray Structure Validation Report ⓘ

Jun 17, 2024 – 06:51 AM EDT

PDB ID : 3ELE  
Title : Crystal structure of Amino Transferase (RER070207001803) from Eubacterium rectale at 2.10 Å resolution  
Authors : Joint Center for Structural Genomics (JCSG)  
Deposited on : 2008-09-22  
Resolution : 2.10 Å (reported)

This is a Full wwPDB X-ray Structure Validation Report for a publicly released PDB entry.

We welcome your comments at [validation@mail.wwpdb.org](mailto:validation@mail.wwpdb.org)

A user guide is available at

<https://www.wwpdb.org/validation/2017/XrayValidationReportHelp>

with specific help available everywhere you see the ⓘ symbol.

The types of validation reports are described at

<http://www.wwpdb.org/validation/2017/FAQs#types>.

---

The following versions of software and data (see [references ⓘ](#)) were used in the production of this report:

MolProbity : 4.02b-467  
Mogul : 2022.3.0, CSD as543be (2022)  
Xtriage (Phenix) : 1.20.1  
EDS : 2.37.1  
Percentile statistics : 20191225.v01 (using entries in the PDB archive December 25th 2019)  
Refmac : 5.8.0158  
CCP4 : 7.0.044 (Gargrove)  
Ideal geometry (proteins) : Engh & Huber (2001)  
Ideal geometry (DNA, RNA) : Parkinson et al. (1996)  
Validation Pipeline (wwPDB-VP) : 2.37.1

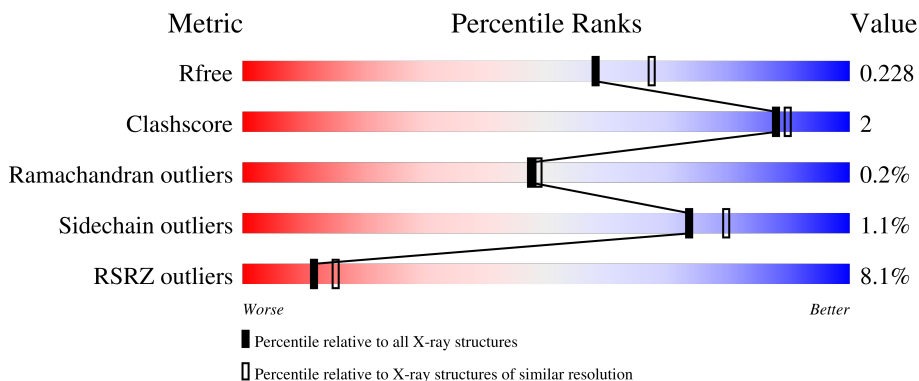
# 1 Overall quality at a glance

The following experimental techniques were used to determine the structure:

*X-RAY DIFFRACTION*

The reported resolution of this entry is 2.10 Å.

Percentile scores (ranging between 0-100) for global validation metrics of the entry are shown in the following graphic. The table shows the number of entries on which the scores are based.



Metric	Whole archive (#Entries)	Similar resolution (#Entries, resolution range(Å))
$R_{free}$	130704	5197 (2.10-2.10)
Clashscore	141614	5710 (2.10-2.10)
Ramachandran outliers	138981	5647 (2.10-2.10)
Sidechain outliers	138945	5648 (2.10-2.10)
RSRZ outliers	127900	5083 (2.10-2.10)

The table below summarises the geometric issues observed across the polymeric chains and their fit to the electron density. The red, orange, yellow and green segments of the lower bar indicate the fraction of residues that contain outliers for  $\geq 3$ , 2, 1 and 0 types of geometric quality criteria respectively. A grey segment represents the fraction of residues that are not modelled. The numeric value for each fraction is indicated below the corresponding segment, with a dot representing fractions  $\leq 5\%$ . The upper red bar (where present) indicates the fraction of residues that have poor fit to the electron density. The numeric value is given above the bar.

Mol	Chain	Length	Quality of chain
1	A	398	
1	B	398	
1	C	398	
1	D	398	

## 2 Entry composition [i](#)

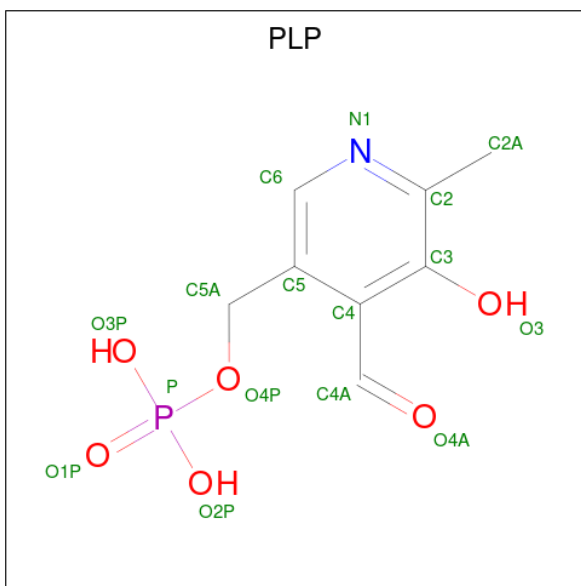
There are 5 unique types of molecules in this entry. The entry contains 13442 atoms, of which 0 are hydrogens and 0 are deuteriums.

In the tables below, the ZeroOcc column contains the number of atoms modelled with zero occupancy, the AltConf column contains the number of residues with at least one atom in alternate conformation and the Trace column contains the number of residues modelled with at most 2 atoms.

- Molecule 1 is a protein called Amino Transferase.

Mol	Chain	Residues	Atoms						ZeroOcc	AltConf	Trace
			Total	C	N	O	S	Se			
1	A	398	Total 3146	C 2016	N 513	O 598	S 9	Se 10	0	4	0
1	B	398	Total 3141	C 2013	N 507	O 603	S 9	Se 9	0	4	0
1	C	397	Total 3143	C 2016	N 509	O 599	S 9	Se 10	0	7	0
1	D	398	Total 3119	C 2000	N 501	O 600	S 9	Se 9	0	5	0

- Molecule 2 is PYRIDOXAL-5'-PHOSPHATE (three-letter code: PLP) (formula: C<sub>8</sub>H<sub>10</sub>NO<sub>6</sub>P).



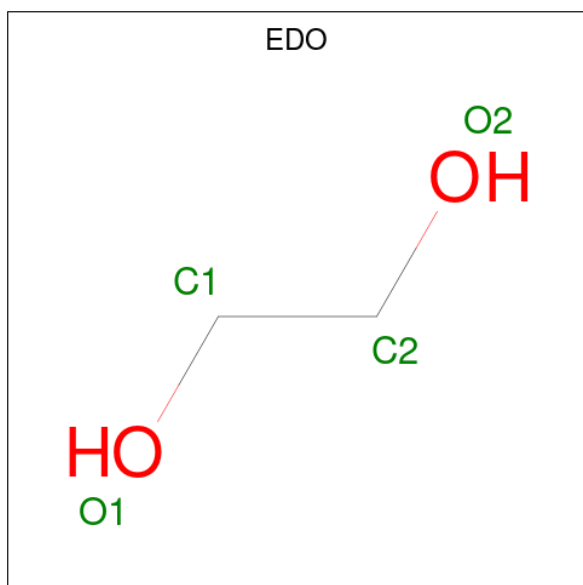
Mol	Chain	Residues	Atoms					ZeroOcc	AltConf
			Total	C	N	O	P		
2	A	1	Total 16	C 8	N 1	O 6	P 1	0	0
2	B	1	Total 16	C 8	N 1	O 6	P 1	0	0

*Continued on next page...*

Continued from previous page...

Mol	Chain	Residues	Atoms					ZeroOcc	AltConf
2	C	1	Total	C	N	O	P	0	0
			16	8	1	6	1		
2	D	1	Total	C	N	O	P	0	0
			16	8	1	6	1		

- Molecule 3 is 1,2-ETHANEDIOL (three-letter code: EDO) (formula: C<sub>2</sub>H<sub>6</sub>O<sub>2</sub>).



Mol	Chain	Residues	Atoms			ZeroOcc	AltConf
3	A	1	Total	C	O	0	0
			4	2	2		
3	A	1	Total	C	O	0	0
			4	2	2		
3	B	1	Total	C	O	0	0
			4	2	2		
3	B	1	Total	C	O	0	0
			4	2	2		
3	B	1	Total	C	O	0	0
			4	2	2		
3	B	1	Total	C	O	0	0
			4	2	2		
3	B	1	Total	C	O	0	0
			4	2	2		
3	B	1	Total	C	O	0	0
			4	2	2		
3	B	1	Total	C	O	0	0
			4	2	2		

Continued on next page...

*Continued from previous page...*

Mol	Chain	Residues	Atoms	ZeroOcc	AltConf
3	B	1	Total C O 4 2 2	0	0
3	B	1	Total C O 4 2 2	0	0
3	C	1	Total C O 4 2 2	0	0

- Molecule 4 is CHLORIDE ION (three-letter code: CL) (formula: Cl).

Mol	Chain	Residues	Atoms	ZeroOcc	AltConf
4	B	1	Total Cl 1 1	0	0
4	D	1	Total Cl 1 1	0	0

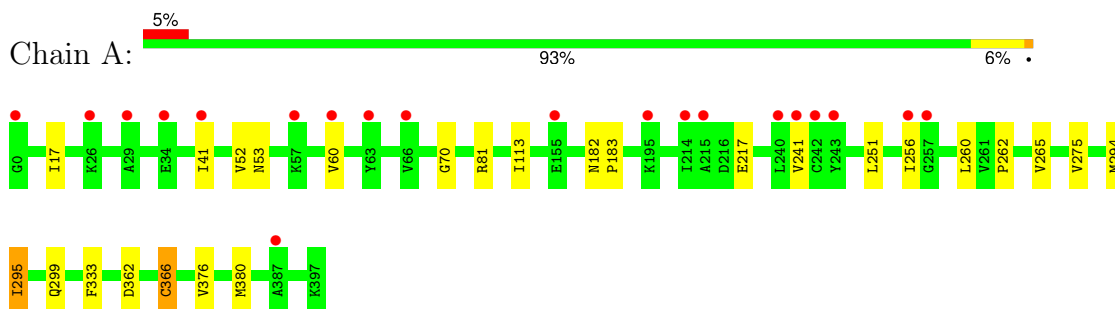
- Molecule 5 is water.

Mol	Chain	Residues	Atoms	ZeroOcc	AltConf
5	A	501	Total O 506 506	0	5
5	B	113	Total O 113 113	0	0
5	C	83	Total O 85 85	0	2
5	D	75	Total O 75 75	0	0

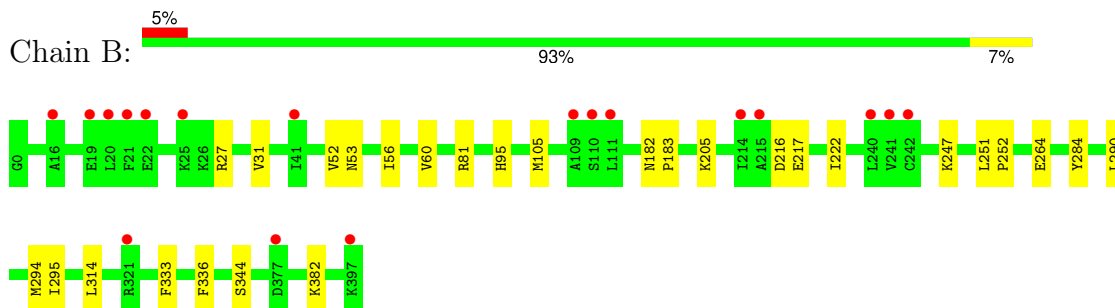
### 3 Residue-property plots [i](#)

These plots are drawn for all protein, RNA, DNA and oligosaccharide chains in the entry. The first graphic for a chain summarises the proportions of the various outlier classes displayed in the second graphic. The second graphic shows the sequence view annotated by issues in geometry and electron density. Residues are color-coded according to the number of geometric quality criteria for which they contain at least one outlier: green = 0, yellow = 1, orange = 2 and red = 3 or more. A red dot above a residue indicates a poor fit to the electron density ( $RSRZ > 2$ ). Stretches of 2 or more consecutive residues without any outlier are shown as a green connector. Residues present in the sample, but not in the model, are shown in grey.

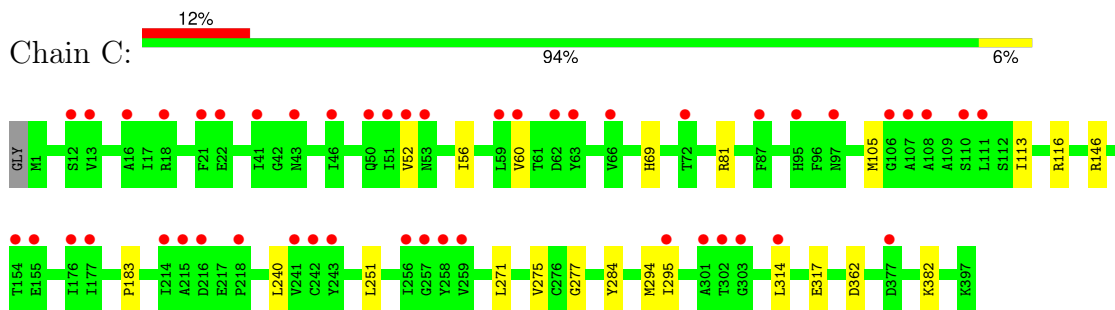
- Molecule 1: Amino Transferase



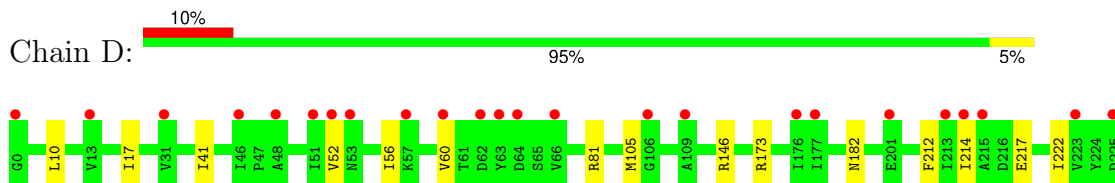
- Molecule 1: Amino Transferase

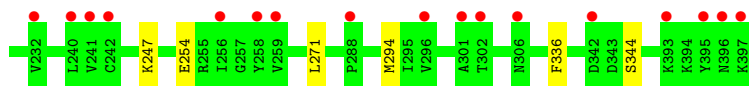


- Molecule 1: Amino Transferase



- Molecule 1: Amino Transferase





## 4 Data and refinement statistics

Property	Value	Source
Space group	P 1	Depositor
Cell constants a, b, c, $\alpha$ , $\beta$ , $\gamma$	65.56Å 68.39Å 98.11Å 82.51° 79.52° 75.68°	Depositor
Resolution (Å)	29.88 – 2.10 29.89 – 2.10	Depositor EDS
% Data completeness (in resolution range)	97.6 (29.88-2.10) 97.6 (29.89-2.10)	Depositor EDS
$R_{merge}$	0.07	Depositor
$R_{sym}$	0.07	Depositor
$\langle I/\sigma(I) \rangle$ <sup>1</sup>	2.50 (at 2.10Å)	Xtrriage
Refinement program	REFMAC 5.2.0019, PHENIX	Depositor
R, $R_{free}$	0.173 , 0.222 0.178 , 0.228	Depositor DCC
$R_{free}$ test set	4610 reflections (5.01%)	wwPDB-VP
Wilson B-factor (Å <sup>2</sup> )	23.6	Xtrriage
Anisotropy	0.594	Xtrriage
Bulk solvent $k_{sol}$ (e/Å <sup>3</sup> ), $B_{sol}$ (Å <sup>2</sup> )	0.34 , 49.7	EDS
L-test for twinning <sup>2</sup>	$\langle  L  \rangle = 0.49$ , $\langle L^2 \rangle = 0.32$	Xtrriage
Estimated twinning fraction	No twinning to report.	Xtrriage
$F_o, F_c$ correlation	0.95	EDS
Total number of atoms	13442	wwPDB-VP
Average B, all atoms (Å <sup>2</sup> )	36.0	wwPDB-VP

Xtrriage's analysis on translational NCS is as follows: *The largest off-origin peak in the Patterson function is 5.39% of the height of the origin peak. No significant pseudotranslation is detected.*

<sup>1</sup>Intensities estimated from amplitudes.

<sup>2</sup>Theoretical values of  $\langle |L| \rangle$ ,  $\langle L^2 \rangle$  for acentric reflections are 0.5, 0.333 respectively for untwinned datasets, and 0.375, 0.2 for perfectly twinned datasets.



## 5 Model quality [i](#)

### 5.1 Standard geometry [i](#)

Bond lengths and bond angles in the following residue types are not validated in this section: EDO, CL, PLP

The Z score for a bond length (or angle) is the number of standard deviations the observed value is removed from the expected value. A bond length (or angle) with  $|Z| > 5$  is considered an outlier worth inspection. RMSZ is the root-mean-square of all Z scores of the bond lengths (or angles).

Mol	Chain	Bond lengths		Bond angles	
		RMSZ	# Z  >5	RMSZ	# Z  >5
1	A	0.71	1/3222 (0.0%)	0.80	1/4349 (0.0%)
1	B	0.70	0/3217	0.79	1/4345 (0.0%)
1	C	0.67	0/3229	0.80	3/4365 (0.1%)
1	D	0.65	0/3196	0.78	5/4319 (0.1%)
All	All	0.68	1/12864 (0.0%)	0.79	10/17378 (0.1%)

All (1) bond length outliers are listed below:

Mol	Chain	Res	Type	Atoms	Z	Observed(Å)	Ideal(Å)
1	A	366	CYS	CB-SG	-5.85	1.72	1.81

All (10) bond angle outliers are listed below:

Mol	Chain	Res	Type	Atoms	Z	Observed(°)	Ideal(°)
1	D	173[A]	ARG	NE-CZ-NH2	-6.19	117.20	120.30
1	D	173[B]	ARG	NE-CZ-NH2	-6.19	117.20	120.30
1	C	81	ARG	NE-CZ-NH1	6.03	123.31	120.30
1	D	146	ARG	NE-CZ-NH1	6.01	123.31	120.30
1	A	81	ARG	NE-CZ-NH1	5.79	123.19	120.30
1	B	81	ARG	NE-CZ-NH1	5.63	123.11	120.30
1	D	81	ARG	NE-CZ-NH1	5.55	123.07	120.30
1	C	146	ARG	NE-CZ-NH2	-5.39	117.60	120.30
1	C	116	ARG	NE-CZ-NH1	5.03	122.81	120.30
1	D	146	ARG	NE-CZ-NH2	-5.02	117.79	120.30

There are no chirality outliers.

There are no planarity outliers.

## 5.2 Too-close contacts [i](#)

In the following table, the Non-H and H(model) columns list the number of non-hydrogen atoms and hydrogen atoms in the chain respectively. The H(added) column lists the number of hydrogen atoms added and optimized by MolProbity. The Clashes column lists the number of clashes within the asymmetric unit, whereas Symm-Clashes lists symmetry-related clashes.

Mol	Chain	Non-H	H(model)	H(added)	Clashes	Symm-Clashes
1	A	3146	0	3087	17	0
1	B	3141	0	3065	18	0
1	C	3143	0	3067	14	0
1	D	3119	0	3027	12	0
2	A	16	0	8	1	0
2	B	16	0	8	2	0
2	C	16	0	8	0	0
2	D	16	0	7	1	0
3	A	8	0	12	0	0
3	B	36	0	54	0	0
3	C	4	0	6	0	0
4	B	1	0	0	0	0
4	D	1	0	0	0	0
5	A	506	0	0	0	0
5	B	113	0	0	0	0
5	C	85	0	0	0	0
5	D	75	0	0	0	0
All	All	13442	0	12349	51	0

The all-atom clashscore is defined as the number of clashes found per 1000 atoms (including hydrogen atoms). The all-atom clashscore for this structure is 2.

All (51) close contacts within the same asymmetric unit are listed below, sorted by their clash magnitude.

Atom-1	Atom-2	Interatomic distance (Å)	Clash overlap (Å)
1:D:17:ILE:HG22	1:D:41:ILE:HG22	1.67	0.76
1:B:294[B]:MSE:HE2	1:B:295:ILE:HD12	1.71	0.73
1:C:52:VAL:HG11	1:C:251:LEU:HD21	1.79	0.62
1:B:52:VAL:HG13	1:B:294[B]:MSE:SE	2.50	0.62
1:A:294[B]:MSE:HE2	1:A:295:ILE:HD12	1.82	0.60
1:C:105:MSE:HE2	1:C:284:TYR:CD1	2.38	0.59
1:A:52:VAL:HG13	1:A:294[B]:MSE:SE	2.53	0.58
1:D:52:VAL:HG13	1:D:294[B]:MSE:SE	2.56	0.56
1:A:60:VAL:HG13	1:B:53:ASN:HB3	1.87	0.55
1:C:105:MSE:HE2	1:C:284:TYR:HD1	1.71	0.54

*Continued on next page...*

*Continued from previous page...*

Atom-1	Atom-2	Interatomic distance (Å)	Clash overlap (Å)
1:C:240:LEU:HD21	1:C:271:LEU:HD21	1.91	0.52
1:A:182:ASN:HB3	2:A:500:PLP:H2A1	1.92	0.51
1:B:182:ASN:HB3	2:B:500:PLP:H2A1	1.93	0.50
1:A:113:ILE:HG21	1:A:275:VAL:HG13	1.93	0.49
1:A:17:ILE:HG22	1:A:41:ILE:HG22	1.95	0.49
1:D:182:ASN:HB3	2:D:500:PLP:H2A1	1.94	0.48
1:B:56:ILE:HG23	1:B:290:LEU:HD21	1.96	0.48
1:A:295:ILE:HG23	1:A:299:GLN:NE2	2.29	0.47
1:C:56:ILE:HG21	1:D:60:VAL:HG21	1.96	0.47
1:D:222:ILE:HD11	1:D:247:LYS:HB3	1.96	0.47
1:C:113:ILE:HG21	1:C:275:VAL:HG13	1.97	0.46
1:C:294[B]:MSE:HE2	1:C:295:ILE:HD12	1.97	0.46
1:C:105:MSE:HE3	1:D:105:MSE:CE	2.45	0.46
1:B:294[B]:MSE:HE2	1:B:295:ILE:CD1	2.45	0.46
1:D:17:ILE:HG22	1:D:41:ILE:CG2	2.40	0.46
1:B:314:LEU:HD21	1:B:382:LYS:HG3	1.98	0.46
1:C:294[B]:MSE:HE2	1:C:295:ILE:CD1	2.46	0.45
1:A:53:ASN:HB3	1:B:60:VAL:HG13	1.99	0.45
1:B:95[A]:HIS:NE2	1:B:264:GLU:OE2	2.48	0.45
1:A:256:ILE:HG12	1:A:295:ILE:HD13	1.99	0.45
1:A:52:VAL:HG11	1:A:251:LEU:HD21	1.98	0.45
1:B:105:MSE:HE2	1:B:284:TYR:CD1	2.51	0.44
1:C:69:HIS:ND1	1:D:254:GLU:OE2	2.51	0.44
1:B:294[A]:MSE:SE	1:B:295:ILE:HD12	2.68	0.43
1:C:60:VAL:HG21	1:D:56:ILE:HG21	1.99	0.43
1:C:314:LEU:HD21	1:C:382:LYS:CG	2.49	0.43
1:A:53:ASN:CB	1:B:60:VAL:HG13	2.49	0.43
1:A:262:PRO:O	1:A:265:VAL:HG22	2.18	0.43
1:B:216:ASP:OD2	2:B:500:PLP:N1	2.52	0.43
1:D:212:PHE:CZ	1:D:271:LEU:HD22	2.54	0.42
1:B:251:LEU:CD1	1:B:294[B]:MSE:HE1	2.48	0.42
1:A:60:VAL:HG13	1:B:53:ASN:CB	2.49	0.42
1:A:241:VAL:HB	1:A:260:LEU:HB3	2.02	0.42
1:C:277:GLY:O	1:D:10:LEU:HD23	2.20	0.41
1:A:70:GLY:HA2	1:B:252:PRO:HG2	2.02	0.41
1:A:376:VAL:HB	1:A:380[A]:MSE:HE3	2.02	0.41
1:A:294[A]:MSE:CE	1:A:295:ILE:HD12	2.49	0.41
1:B:27:ARG:NH2	1:B:31:VAL:HG11	2.35	0.41
1:C:294[A]:MSE:SE	1:C:295:ILE:HD12	2.71	0.41
1:B:222:ILE:HD11	1:B:247:LYS:HB3	2.03	0.40
1:D:214:ILE:N	1:D:214:ILE:HD12	2.36	0.40

There are no symmetry-related clashes.

## 5.3 Torsion angles [i](#)

### 5.3.1 Protein backbone [i](#)

In the following table, the Percentiles column shows the percent Ramachandran outliers of the chain as a percentile score with respect to all X-ray entries followed by that with respect to entries of similar resolution.

The Analysed column shows the number of residues for which the backbone conformation was analysed, and the total number of residues.

Mol	Chain	Analysed	Favoured	Allowed	Outliers	Percentiles	
1	A	400/398 (100%)	387 (97%)	12 (3%)	1 (0%)	41	41
1	B	400/398 (100%)	385 (96%)	14 (4%)	1 (0%)	41	41
1	C	402/398 (101%)	386 (96%)	16 (4%)	0	100	100
1	D	401/398 (101%)	386 (96%)	14 (4%)	1 (0%)	47	49
All	All	1603/1592 (101%)	1544 (96%)	56 (4%)	3 (0%)	47	49

All (3) Ramachandran outliers are listed below:

Mol	Chain	Res	Type
1	A	217	GLU
1	B	217	GLU
1	D	217	GLU

### 5.3.2 Protein sidechains [i](#)

In the following table, the Percentiles column shows the percent sidechain outliers of the chain as a percentile score with respect to all X-ray entries followed by that with respect to entries of similar resolution.

The Analysed column shows the number of residues for which the sidechain conformation was analysed, and the total number of residues.

Mol	Chain	Analysed	Rotameric	Outliers	Percentiles	
1	A	335/325 (103%)	330 (98%)	5 (2%)	65	71
1	B	334/325 (103%)	329 (98%)	5 (2%)	65	71
1	C	333/325 (102%)	330 (99%)	3 (1%)	78	84
1	D	329/325 (101%)	327 (99%)	2 (1%)	86	90

*Continued on next page...*

*Continued from previous page...*

Mol	Chain	Analysed	Rotameric	Outliers	Percentiles
All	All	1331/1300 (102%)	1316 (99%)	15 (1%)	73 79

All (15) residues with a non-rotameric sidechain are listed below:

Mol	Chain	Res	Type
1	A	183	PRO
1	A	295	ILE
1	A	333	PHE
1	A	362	ASP
1	A	366	CYS
1	B	183	PRO
1	B	205	LYS
1	B	333	PHE
1	B	336	PHE
1	B	344	SER
1	C	183	PRO
1	C	317	GLU
1	C	362	ASP
1	D	336	PHE
1	D	344	SER

Sometimes sidechains can be flipped to improve hydrogen bonding and reduce clashes. All (1) such sidechains are listed below:

Mol	Chain	Res	Type
1	A	53	ASN

### 5.3.3 RNA [i](#)

There are no RNA molecules in this entry.

## 5.4 Non-standard residues in protein, DNA, RNA chains [i](#)

There are no non-standard protein/DNA/RNA residues in this entry.

## 5.5 Carbohydrates [i](#)

There are no monosaccharides in this entry.

## 5.6 Ligand geometry

Of 18 ligands modelled in this entry, 2 are monoatomic - leaving 16 for Mogul analysis.

In the following table, the Counts columns list the number of bonds (or angles) for which Mogul statistics could be retrieved, the number of bonds (or angles) that are observed in the model and the number of bonds (or angles) that are defined in the Chemical Component Dictionary. The Link column lists molecule types, if any, to which the group is linked. The Z score for a bond length (or angle) is the number of standard deviations the observed value is removed from the expected value. A bond length (or angle) with  $|Z| > 2$  is considered an outlier worth inspection. RMSZ is the root-mean-square of all Z scores of the bond lengths (or angles).

Mol	Type	Chain	Res	Link	Bond lengths			Bond angles		
					Counts	RMSZ	# Z  > 2	Counts	RMSZ	# Z  > 2
3	EDO	B	507	-	3,3,3	0.49	0	2,2,2	0.07	0
3	EDO	B	508	-	3,3,3	0.28	0	2,2,2	0.52	0
3	EDO	B	506	-	3,3,3	0.51	0	2,2,2	0.33	0
3	EDO	A	501	-	3,3,3	0.35	0	2,2,2	0.56	0
3	EDO	B	505	-	3,3,3	0.58	0	2,2,2	0.22	0
3	EDO	B	509	-	3,3,3	0.38	0	2,2,2	0.15	0
3	EDO	B	510	-	3,3,3	0.36	0	2,2,2	0.32	0
3	EDO	A	502	-	3,3,3	0.36	0	2,2,2	0.41	0
2	PLP	D	500	-	16,16,16	1.36	3 (18%)	20,23,23	1.28	2 (10%)
3	EDO	C	501	-	3,3,3	0.40	0	2,2,2	0.08	0
3	EDO	B	503	-	3,3,3	0.45	0	2,2,2	0.26	0
3	EDO	B	504	-	3,3,3	0.42	0	2,2,2	0.50	0
3	EDO	B	502	-	3,3,3	0.43	0	2,2,2	0.50	0
2	PLP	B	500	-	16,16,16	1.43	3 (18%)	20,23,23	1.43	3 (15%)
2	PLP	C	500	-	16,16,16	1.34	3 (18%)	20,23,23	1.24	3 (15%)
2	PLP	A	500	-	16,16,16	1.50	4 (25%)	20,23,23	1.43	5 (25%)

In the following table, the Chirals column lists the number of chiral outliers, the number of chiral centers analysed, the number of these observed in the model and the number defined in the Chemical Component Dictionary. Similar counts are reported in the Torsion and Rings columns. '-' means no outliers of that kind were identified.

Mol	Type	Chain	Res	Link	Chirals	Torsions	Rings
3	EDO	B	507	-	-	1/1/1/1	-
3	EDO	B	508	-	-	1/1/1/1	-
3	EDO	B	506	-	-	0/1/1/1	-
3	EDO	A	501	-	-	0/1/1/1	-
3	EDO	B	505	-	-	1/1/1/1	-
3	EDO	B	509	-	-	0/1/1/1	-
3	EDO	B	510	-	-	0/1/1/1	-
3	EDO	A	502	-	-	1/1/1/1	-

*Continued on next page...*

Continued from previous page...

Mol	Type	Chain	Res	Link	Chirals	Torsions	Rings
2	PLP	D	500	-	-	2/8/8/8	0/1/1/1
3	EDO	C	501	-	-	1/1/1/1	-
3	EDO	B	503	-	-	1/1/1/1	-
3	EDO	B	504	-	-	0/1/1/1	-
3	EDO	B	502	-	-	0/1/1/1	-
2	PLP	B	500	-	-	5/8/8/8	0/1/1/1
2	PLP	C	500	-	-	7/8/8/8	0/1/1/1
2	PLP	A	500	-	-	7/8/8/8	0/1/1/1

All (13) bond length outliers are listed below:

Mol	Chain	Res	Type	Atoms	Z	Observed(Å)	Ideal(Å)
2	B	500	PLP	C2-N1	3.55	1.40	1.33
2	A	500	PLP	C2-N1	3.52	1.40	1.33
2	D	500	PLP	C2-N1	3.42	1.39	1.33
2	C	500	PLP	C2-N1	2.98	1.39	1.33
2	C	500	PLP	C4-C4A	2.86	1.53	1.46
2	D	500	PLP	C4-C4A	2.50	1.52	1.46
2	A	500	PLP	C4-C4A	2.49	1.52	1.46
2	D	500	PLP	C6-N1	2.31	1.39	1.34
2	B	500	PLP	C4-C4A	2.28	1.51	1.46
2	A	500	PLP	C6-N1	2.23	1.39	1.34
2	A	500	PLP	C6-C5	2.23	1.42	1.37
2	B	500	PLP	C6-N1	2.06	1.38	1.34
2	C	500	PLP	C6-N1	2.01	1.38	1.34

All (13) bond angle outliers are listed below:

Mol	Chain	Res	Type	Atoms	Z	Observed(°)	Ideal(°)
2	B	500	PLP	C5-C6-N1	-3.13	118.74	123.83
2	B	500	PLP	O4P-C5A-C5	3.08	115.14	109.36
2	A	500	PLP	C3-C4-C4A	-2.76	116.05	119.84
2	A	500	PLP	C5-C6-N1	-2.59	119.62	123.83
2	C	500	PLP	C5-C6-N1	-2.53	119.72	123.83
2	C	500	PLP	O4P-P-O1P	2.43	113.02	106.44
2	C	500	PLP	C5A-C5-C6	-2.42	115.42	119.36
2	A	500	PLP	O4P-C5A-C5	2.33	113.72	109.36
2	D	500	PLP	C5-C6-N1	-2.22	120.23	123.83
2	A	500	PLP	O3P-P-O4P	2.10	112.14	106.67
2	B	500	PLP	O4A-C4A-C4	-2.07	119.88	124.80
2	A	500	PLP	O4A-C4A-C4	-2.02	120.01	124.80

Continued on next page...

*Continued from previous page...*

Mol	Chain	Res	Type	Atoms	Z	Observed(°)	Ideal(°)
2	D	500	PLP	C5A-C5-C6	-2.02	116.07	119.36

There are no chirality outliers.

All (27) torsion outliers are listed below:

Mol	Chain	Res	Type	Atoms
2	A	500	PLP	C3-C4-C4A-O4A
2	A	500	PLP	C5A-O4P-P-O2P
2	A	500	PLP	C5A-O4P-P-O3P
2	B	500	PLP	C3-C4-C4A-O4A
2	B	500	PLP	C5A-O4P-P-O2P
2	C	500	PLP	C5A-O4P-P-O2P
2	C	500	PLP	C5A-O4P-P-O3P
2	D	500	PLP	C3-C4-C4A-O4A
2	B	500	PLP	C5-C4-C4A-O4A
2	D	500	PLP	C5-C4-C4A-O4A
2	C	500	PLP	C3-C4-C4A-O4A
3	B	507	EDO	O1-C1-C2-O2
2	A	500	PLP	C5-C4-C4A-O4A
3	A	502	EDO	O1-C1-C2-O2
3	B	503	EDO	O1-C1-C2-O2
3	B	505	EDO	O1-C1-C2-O2
2	A	500	PLP	C5A-O4P-P-O1P
2	C	500	PLP	C5A-O4P-P-O1P
3	B	508	EDO	O1-C1-C2-O2
2	B	500	PLP	C5A-O4P-P-O3P
2	A	500	PLP	C4-C5-C5A-O4P
2	C	500	PLP	C4-C5-C5A-O4P
2	B	500	PLP	C5A-O4P-P-O1P
2	C	500	PLP	C5-C4-C4A-O4A
2	A	500	PLP	C6-C5-C5A-O4P
2	C	500	PLP	C6-C5-C5A-O4P
3	C	501	EDO	O1-C1-C2-O2

There are no ring outliers.

3 monomers are involved in 4 short contacts:

Mol	Chain	Res	Type	Clashes	Symm-Clashes
2	D	500	PLP	1	0
2	B	500	PLP	2	0
2	A	500	PLP	1	0



## 5.7 Other polymers [i](#)

There are no such residues in this entry.

## 5.8 Polymer linkage issues [i](#)

There are no chain breaks in this entry.

## 6 Fit of model and data [i](#)

### 6.1 Protein, DNA and RNA chains [i](#)

In the following table, the column labelled ‘#RSRZ > 2’ contains the number (and percentage) of RSRZ outliers, followed by percent RSRZ outliers for the chain as percentile scores relative to all X-ray entries and entries of similar resolution. The OWAB column contains the minimum, median, 95<sup>th</sup> percentile and maximum values of the occupancy-weighted average B-factor per residue. The column labelled ‘Q < 0.9’ lists the number of (and percentage) of residues with an average occupancy less than 0.9.

Mol	Chain	Analysed	<RSRZ>	#RSRZ>2	OWAB(Å <sup>2</sup> )	Q<0.9
1	A	390/398 (97%)	0.42	20 (5%) 28 33	29, 35, 45, 55	0
1	B	390/398 (97%)	0.49	18 (4%) 32 38	29, 35, 47, 63	0
1	C	389/398 (97%)	0.80	48 (12%) 4 5	28, 35, 46, 59	0
1	D	390/398 (97%)	0.80	41 (10%) 6 8	29, 35, 44, 59	0
All	All	1559/1592 (97%)	0.63	127 (8%) 12 15	28, 35, 45, 63	0

All (127) RSRZ outliers are listed below:

Mol	Chain	Res	Type	RSRZ
1	D	397	LYS	6.6
1	A	0	GLY	5.4
1	C	60	VAL	4.8
1	B	397	LYS	4.6
1	D	241	VAL	4.5
1	C	242	CYS	4.4
1	D	393	LYS	4.2
1	D	60	VAL	4.2
1	C	256	ILE	4.1
1	A	29	ALA	4.1
1	C	303	GLY	4.0
1	D	51	ILE	3.9
1	D	46	ILE	3.8
1	C	107	ALA	3.8
1	C	41	ILE	3.8
1	D	214	ILE	3.7
1	D	48	ALA	3.7
1	C	13	VAL	3.5
1	D	225	ASP	3.4
1	B	241	VAL	3.4
1	D	63	TYR	3.3

*Continued on next page...*

*Continued from previous page...*

Mol	Chain	Res	Type	RSRZ
1	C	63	TYR	3.3
1	D	396	ASN	3.2
1	C	177	ILE	3.2
1	C	241	VAL	3.2
1	C	243	TYR	3.2
1	D	53	ASN	3.2
1	C	106	GLY	3.2
1	B	19	GLU	3.1
1	D	302	THR	3.1
1	C	51	ILE	3.1
1	C	111	LEU	3.1
1	B	41	ILE	3.1
1	C	46	ILE	3.0
1	C	215	ALA	3.0
1	D	240	LEU	3.0
1	C	21	PHE	3.0
1	D	176	ILE	3.0
1	C	12	SER	3.0
1	D	106	GLY	3.0
1	D	215	ALA	3.0
1	D	296	VAL	2.9
1	C	377	ASP	2.9
1	D	342	ASP	2.9
1	C	72	THR	2.9
1	C	18	ARG	2.8
1	B	240	LEU	2.8
1	A	256	ILE	2.8
1	C	214	ILE	2.8
1	C	257	GLY	2.8
1	B	16	ALA	2.7
1	C	59	LEU	2.7
1	A	26	LYS	2.7
1	C	53	ASN	2.7
1	D	177	ILE	2.7
1	B	215	ALA	2.7
1	C	258	TYR	2.6
1	D	395	TYR	2.6
1	A	242	CYS	2.6
1	A	215	ALA	2.6
1	B	321	ARG	2.6
1	A	34	GLU	2.6
1	D	109	ALA	2.6

*Continued on next page...*

*Continued from previous page...*

Mol	Chain	Res	Type	RSRZ
1	B	214	ILE	2.6
1	D	242	CYS	2.6
1	C	50	GLN	2.6
1	A	60	VAL	2.6
1	D	258	TYR	2.6
1	B	110	SER	2.6
1	C	259	VAL	2.6
1	C	154	THR	2.6
1	D	213	ILE	2.6
1	D	62	ASP	2.5
1	C	62	ASP	2.5
1	D	256	ILE	2.5
1	B	242	CYS	2.5
1	C	16	ALA	2.5
1	C	87	PHE	2.5
1	A	214	ILE	2.4
1	C	176	ILE	2.4
1	C	314	LEU	2.4
1	A	241	VAL	2.4
1	B	377	ASP	2.4
1	C	97	ASN	2.4
1	D	13	VAL	2.3
1	A	63	TYR	2.3
1	D	259	VAL	2.3
1	C	108	ALA	2.3
1	C	295	ILE	2.3
1	A	155	GLU	2.3
1	A	240	LEU	2.3
1	C	66	VAL	2.3
1	C	95[A]	HIS	2.3
1	C	218	PRO	2.3
1	C	302	THR	2.3
1	D	223	VAL	2.3
1	C	22	GLU	2.3
1	A	195	LYS	2.2
1	D	301	ALA	2.2
1	D	201	GLU	2.2
1	C	110	SER	2.2
1	C	43	ASN	2.2
1	B	109	ALA	2.2
1	C	301	ALA	2.2
1	C	155[A]	GLU	2.2

*Continued on next page...*

*Continued from previous page...*

Mol	Chain	Res	Type	RSRZ
1	A	41	ILE	2.2
1	A	66	VAL	2.2
1	A	243	TYR	2.2
1	A	257	GLY	2.1
1	D	57	LYS	2.1
1	C	52	VAL	2.1
1	D	0	GLY	2.1
1	D	306	ASN	2.1
1	B	22	GLU	2.1
1	B	25	LYS	2.1
1	B	111	LEU	2.1
1	D	31	VAL	2.1
1	D	66	VAL	2.1
1	B	21	PHE	2.1
1	B	20	LEU	2.0
1	D	52	VAL	2.0
1	D	64	ASP	2.0
1	D	288	PRO	2.0
1	A	387	ALA	2.0
1	D	232	VAL	2.0
1	A	57	LYS	2.0
1	C	216	ASP	2.0

## 6.2 Non-standard residues in protein, DNA, RNA chains [\(i\)](#)

There are no non-standard protein/DNA/RNA residues in this entry.

## 6.3 Carbohydrates [\(i\)](#)

There are no monosaccharides in this entry.

## 6.4 Ligands [\(i\)](#)

In the following table, the Atoms column lists the number of modelled atoms in the group and the number defined in the chemical component dictionary. The B-factors column lists the minimum, median, 95<sup>th</sup> percentile and maximum values of B factors of atoms in the group. The column labelled 'Q< 0.9' lists the number of atoms with occupancy less than 0.9.

Mol	Type	Chain	Res	Atoms	RSCC	RSR	B-factors(Å <sup>2</sup> )	Q<0.9
2	PLP	D	500	16/16	0.72	0.26	60,65,70,72	0

*Continued on next page...*

Continued from previous page...

Mol	Type	Chain	Res	Atoms	RSCC	RSR	B-factors( $\text{\AA}^2$ )	Q<0.9
2	PLP	C	500	16/16	0.82	0.22	50,54,60,60	0
3	EDO	C	501	4/4	0.82	0.23	58,58,58,60	0
3	EDO	B	508	4/4	0.84	0.30	55,56,58,59	0
3	EDO	B	503	4/4	0.86	0.22	38,41,43,48	0
3	EDO	B	509	4/4	0.86	0.18	54,56,56,56	0
3	EDO	B	505	4/4	0.86	0.18	36,44,46,50	0
3	EDO	B	507	4/4	0.87	0.29	47,51,51,55	0
3	EDO	B	504	4/4	0.88	0.19	34,38,41,49	0
3	EDO	B	510	4/4	0.89	0.16	51,51,53,55	0
2	PLP	A	500	16/16	0.90	0.17	30,38,49,55	0
3	EDO	B	502	4/4	0.90	0.17	32,38,39,40	0
3	EDO	B	506	4/4	0.91	0.15	34,38,38,39	0
3	EDO	A	502	4/4	0.92	0.29	59,59,60,62	0
3	EDO	A	501	4/4	0.94	0.16	28,38,40,41	0
2	PLP	B	500	16/16	0.95	0.14	33,40,48,55	0
4	CL	D	501	1/1	0.98	0.10	32,32,32,32	0
4	CL	B	501	1/1	0.99	0.05	22,22,22,22	0

## 6.5 Other polymers [\(i\)](#)

There are no such residues in this entry.