



wwPDB X-ray Structure Validation Summary Report ⓘ

May 16, 2020 – 12:43 pm BST

PDB ID : 4ENT
Title : Structure of the S234A variant of E. coli KatE
Authors : Loewen, P.C.; Jha, V.
Deposited on : 2012-04-13
Resolution : 1.70 Å(reported)

This is a wwPDB X-ray Structure Validation Summary Report for a publicly released PDB entry.

We welcome your comments at validation@mail.wwpdb.org

A user guide is available at

<https://www.wwpdb.org/validation/2017/XrayValidationReportHelp>

with specific help available everywhere you see the ⓘ symbol.

The following versions of software and data (see [references ⓘ](#)) were used in the production of this report:

MolProbity : 4.02b-467
Mogul : 1.8.5 (274361), CSD as541be (2020)
Xtriage (Phenix) : 1.13
EDS : 2.11
buster-report : 1.1.7 (2018)
Percentile statistics : 20191225.v01 (using entries in the PDB archive December 25th 2019)
Refmac : 5.8.0158
CCP4 : 7.0.044 (Gargrove)
Ideal geometry (proteins) : Engh & Huber (2001)
Ideal geometry (DNA, RNA) : Parkinson et al. (1996)
Validation Pipeline (wwPDB-VP) : 2.11

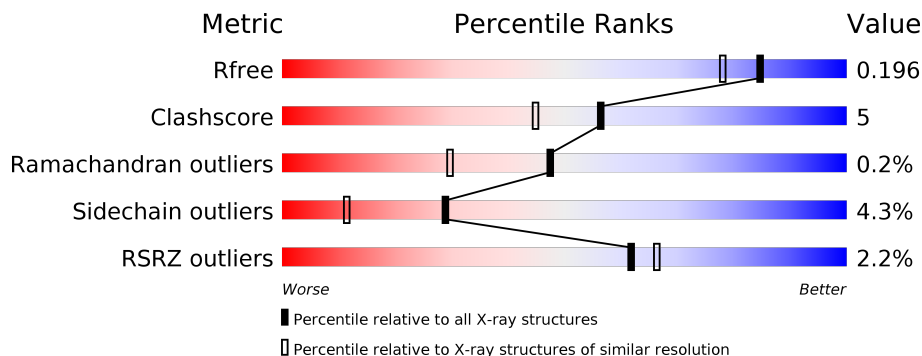
1 Overall quality at a glance

The following experimental techniques were used to determine the structure:

X-RAY DIFFRACTION

The reported resolution of this entry is 1.70 Å.

Percentile scores (ranging between 0-100) for global validation metrics of the entry are shown in the following graphic. The table shows the number of entries on which the scores are based.



Metric	Whole archive (#Entries)	Similar resolution (#Entries, resolution range(Å))
R_{free}	130704	4298 (1.70-1.70)
Clashscore	141614	4695 (1.70-1.70)
Ramachandran outliers	138981	4610 (1.70-1.70)
Sidechain outliers	138945	4610 (1.70-1.70)
RSRZ outliers	127900	4222 (1.70-1.70)

The table below summarises the geometric issues observed across the polymeric chains and their fit to the electron density. The red, orange, yellow and green segments on the lower bar indicate the fraction of residues that contain outliers for ≥ 3 , 2, 1 and 0 types of geometric quality criteria respectively. A grey segment represents the fraction of residues that are not modelled. The numeric value for each fraction is indicated below the corresponding segment, with a dot representing fractions $\leq 5\%$. The upper red bar (where present) indicates the fraction of residues that have poor fit to the electron density. The numeric value is given above the bar.

Mol	Chain	Length	Quality of chain
1	A	753	
1	B	753	
1	C	753	
1	D	753	

2 Entry composition

There are 4 unique types of molecules in this entry. The entry contains 26312 atoms, of which 0 are hydrogens and 0 are deuteriums.

In the tables below, the ZeroOcc column contains the number of atoms modelled with zero occupancy, the AltConf column contains the number of residues with at least one atom in alternate conformation and the Trace column contains the number of residues modelled with at most 2 atoms.

- Molecule 1 is a protein called Catalase HP11.

Mol	Chain	Residues	Atoms					ZeroOcc	AltConf	Trace
			Total	C	N	O	S			
1	A	726	5753	3652	1007	1082	12	0	3	0
1	B	726	5740	3643	1004	1081	12	0	0	0
1	C	726	5755	3654	1007	1082	12	0	2	0
1	D	726	5749	3649	1005	1083	12	0	2	0

There are 4 discrepancies between the modelled and reference sequences:

Chain	Residue	Modelled	Actual	Comment	Reference
A	234	ALA	SER	ENGINEERED MUTATION	UNP P21179
B	234	ALA	SER	ENGINEERED MUTATION	UNP P21179
C	234	ALA	SER	ENGINEERED MUTATION	UNP P21179
D	234	ALA	SER	ENGINEERED MUTATION	UNP P21179

- Molecule 2 is CIS-HEME D HYDROXYCHLORIN GAMMA-SPIROLACTONE (three-letter code: HDD) (formula: C₃₄H₃₂FeN₄O₅).

Mol	Chain	Residues	Atoms				ZeroOcc	AltConf	
3	A	1	Total	C	Fe	N	O	0	1
			43	34	1	4	4		
3	B	1	Total	C	Fe	N	O	0	1
			43	34	1	4	4		
3	C	1	Total	C	Fe	N	O	0	1
			43	34	1	4	4		
3	D	1	Total	C	Fe	N	O	0	1
			43	34	1	4	4		

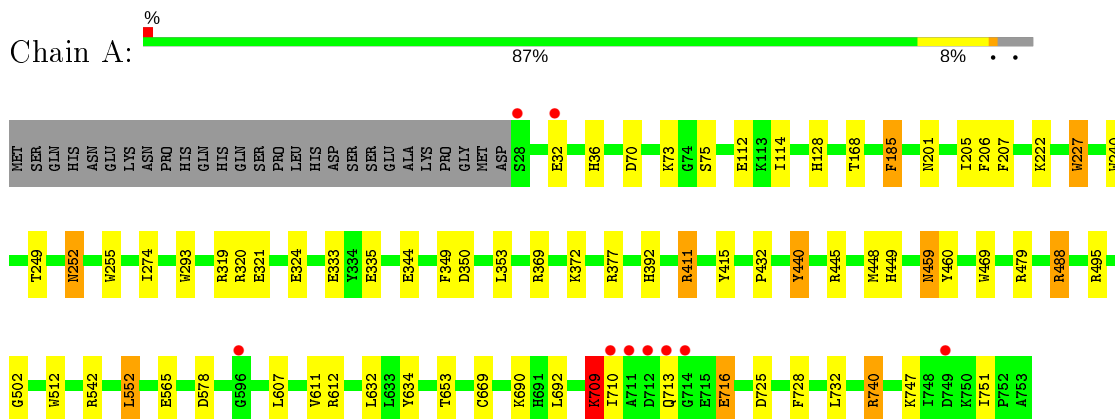
- Molecule 4 is water.

Mol	Chain	Residues	Atoms		ZeroOcc	AltConf
4	A	779	Total	O	0	0
			779	779		
4	B	679	Total	O	0	0
			679	679		
4	C	741	Total	O	0	0
			741	741		
4	D	768	Total	O	0	0
			768	768		

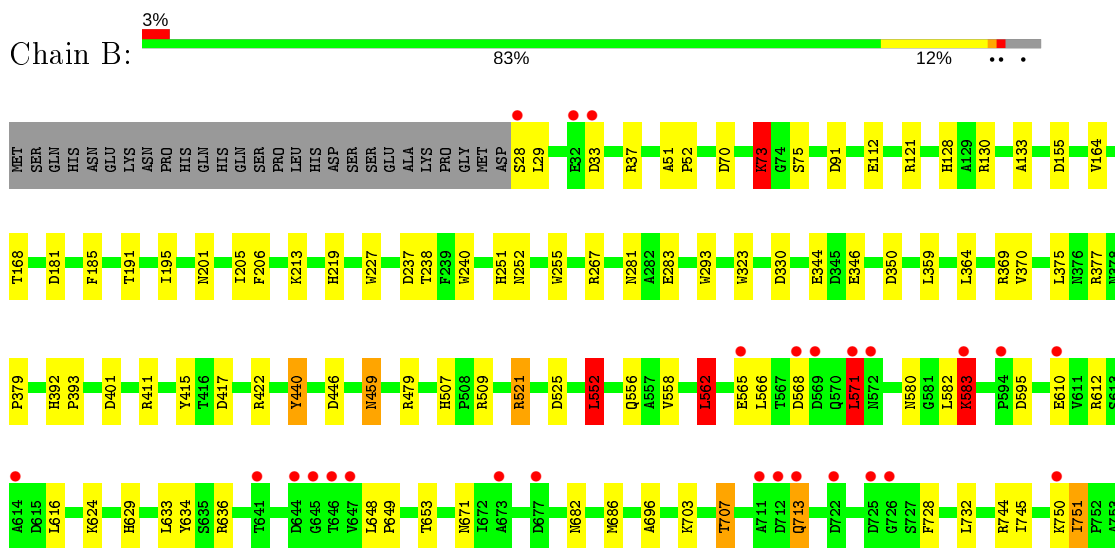
3 Residue-property plots

These plots are drawn for all protein, RNA and DNA chains in the entry. The first graphic for a chain summarises the proportions of the various outlier classes displayed in the second graphic. The second graphic shows the sequence view annotated by issues in geometry and electron density. Residues are color-coded according to the number of geometric quality criteria for which they contain at least one outlier: green = 0, yellow = 1, orange = 2 and red = 3 or more. A red dot above a residue indicates a poor fit to the electron density ($RSRZ > 2$). Stretches of 2 or more consecutive residues without any outlier are shown as a green connector. Residues present in the sample, but not in the model, are shown in grey.

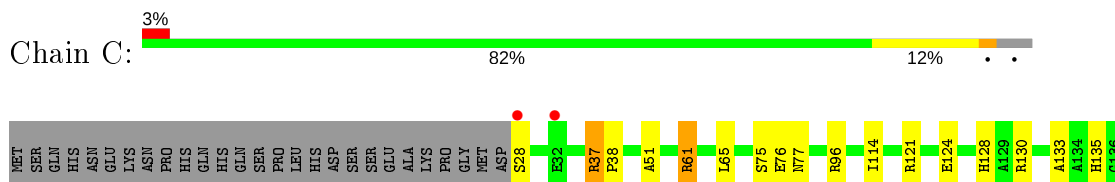
- Molecule 1: Catalase HP11

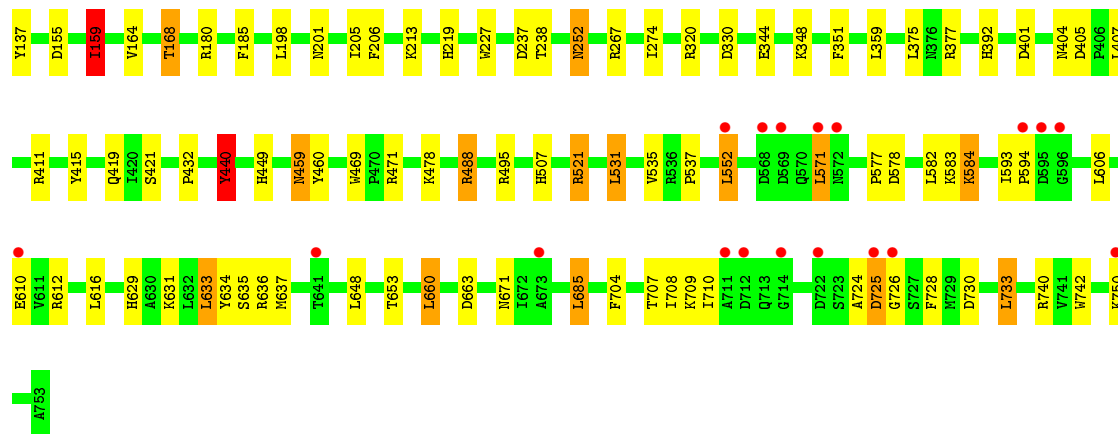


- Molecule 1: Catalase HP11

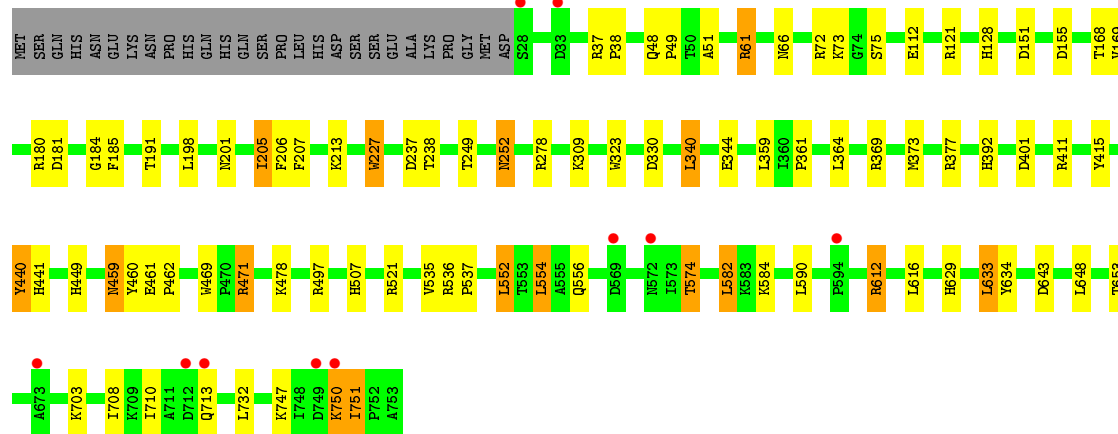
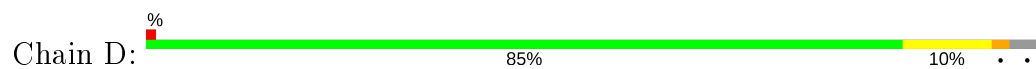


- Molecule 1: Catalase HP11





• Molecule 1: Catalase HPII



4 Data and refinement statistics

Property	Value	Source
Space group	P 1 21 1	Depositor
Cell constants a, b, c, α , β , γ	93.46Å 133.05Å 122.19Å 90.00° 109.58° 90.00°	Depositor
Resolution (Å)	33.26 – 1.70 33.26 – 1.70	Depositor EDS
% Data completeness (in resolution range)	98.1 (33.26-1.70) 98.2 (33.26-1.70)	Depositor EDS
R_{merge}	(Not available)	Depositor
R_{sym}	0.11	Depositor
$\langle I/\sigma(I) \rangle$ ¹	2.26 (at 1.70Å)	Xtrriage
Refinement program	REFMAC	Depositor
R, R_{free}	0.158 , 0.197 0.158 , 0.196	Depositor DCC
R_{free} test set	15289 reflections (5.06%)	wwPDB-VP
Wilson B-factor (Å ²)	12.2	Xtrriage
Anisotropy	0.035	Xtrriage
Bulk solvent k_{sol} (e/Å ³), B_{sol} (Å ²)	0.34 , 44.3	EDS
L-test for twinning ²	$\langle L \rangle = 0.49$, $\langle L^2 \rangle = 0.32$	Xtrriage
Estimated twinning fraction	0.024 for h,-k,-h-l	Xtrriage
F_o, F_c correlation	0.96	EDS
Total number of atoms	26312	wwPDB-VP
Average B, all atoms (Å ²)	15.0	wwPDB-VP

Xtrriage's analysis on translational NCS is as follows: *The largest off-origin peak in the Patterson function is 3.25% of the height of the origin peak. No significant pseudotranslation is detected.*

¹ Intensities estimated from amplitudes.

² Theoretical values of $\langle |L| \rangle$, $\langle L^2 \rangle$ for acentric reflections are 0.5, 0.333 respectively for untwinned datasets, and 0.375, 0.2 for perfectly twinned datasets.

5 Model quality [i](#)

5.1 Standard geometry [i](#)

Bond lengths and bond angles in the following residue types are not validated in this section: HEM, OCS, HDD

The Z score for a bond length (or angle) is the number of standard deviations the observed value is removed from the expected value. A bond length (or angle) with $|Z| > 5$ is considered an outlier worth inspection. RMSZ is the root-mean-square of all Z scores of the bond lengths (or angles).

Mol	Chain	Bond lengths		Bond angles	
		RMSZ	# Z >5	RMSZ	# Z >5
1	A	1.16	13/5912 (0.2%)	1.08	14/8035 (0.2%)
1	B	1.13	9/5886 (0.2%)	1.08	23/8001 (0.3%)
1	C	1.11	9/5905 (0.2%)	1.07	25/8027 (0.3%)
1	D	1.17	7/5901 (0.1%)	1.12	26/8021 (0.3%)
All	All	1.14	38/23604 (0.2%)	1.09	88/32084 (0.3%)

The worst 5 of 38 bond length outliers are listed below:

Mol	Chain	Res	Type	Atoms	Z	Observed(Å)	Ideal(Å)
1	A	324	GLU	CD-OE2	7.92	1.34	1.25
1	B	323	TRP	CD2-CE2	7.90	1.50	1.41
1	B	346	GLU	CD-OE1	7.69	1.34	1.25
1	B	440	TYR	CE1-CZ	7.42	1.48	1.38
1	D	440	TYR	CE1-CZ	7.03	1.47	1.38

The worst 5 of 88 bond angle outliers are listed below:

Mol	Chain	Res	Type	Atoms	Z	Observed(°)	Ideal(°)
1	D	478	LYS	CD-CE-NZ	11.18	137.40	111.70
1	D	377	ARG	NE-CZ-NH2	-10.34	115.13	120.30
1	B	521	ARG	NE-CZ-NH1	9.70	125.15	120.30
1	A	552	LEU	CB-CG-CD1	9.05	126.39	111.00
1	C	213	LYS	CD-CE-NZ	-8.43	92.32	111.70

There are no chirality outliers.

There are no planarity outliers.

5.2 Too-close contacts [i](#)

In the following table, the Non-H and H(model) columns list the number of non-hydrogen atoms and hydrogen atoms in the chain respectively. The H(added) column lists the number of hydrogen atoms added and optimized by MolProbity. The Clashes column lists the number of clashes within the asymmetric unit, whereas Symm-Clashes lists symmetry related clashes.

Mol	Chain	Non-H	H(model)	H(added)	Clashes	Symm-Clashes
1	A	5753	0	5591	44	0
1	B	5740	0	5574	50	0
1	C	5755	0	5591	77	0
1	D	5749	0	5587	50	0
2	A	44	0	31	4	0
2	B	44	0	31	3	0
2	C	44	0	31	2	0
2	D	44	0	31	4	0
3	A	43	0	30	8	0
3	B	43	0	30	6	0
3	C	43	0	30	15	0
3	D	43	0	30	9	0
4	A	779	0	0	9	0
4	B	679	0	0	15	0
4	C	741	0	0	12	0
4	D	768	0	0	8	0
All	All	26312	0	22587	230	0

The all-atom clashscore is defined as the number of clashes found per 1000 atoms (including hydrogen atoms). The all-atom clashscore for this structure is 5.

The worst 5 of 230 close contacts within the same asymmetric unit are listed below, sorted by their clash magnitude.

Atom-1	Atom-2	Interatomic distance (Å)	Clash overlap (Å)
1:B:392:HIS:ND1	1:B:415:TYR:CB	1.74	1.51
1:D:392:HIS:ND1	1:D:415:TYR:CB	1.73	1.49
1:A:392:HIS:ND1	1:A:415:TYR:CB	1.73	1.49
1:C:392:HIS:ND1	1:C:415:TYR:CB	1.77	1.47
1:B:369:ARG:HG2	4:B:1296:HOH:O	1.26	1.32

There are no symmetry-related clashes.

5.3 Torsion angles [i](#)

5.3.1 Protein backbone [i](#)

In the following table, the Percentiles column shows the percent Ramachandran outliers of the chain as a percentile score with respect to all X-ray entries followed by that with respect to entries of similar resolution.

The Analysed column shows the number of residues for which the backbone conformation was analysed, and the total number of residues.

Mol	Chain	Analysed	Favoured	Allowed	Outliers	Percentiles	
1	A	726/753 (96%)	708 (98%)	15 (2%)	3 (0%)	34	18
1	B	723/753 (96%)	705 (98%)	17 (2%)	1 (0%)	51	33
1	C	725/753 (96%)	708 (98%)	15 (2%)	2 (0%)	41	24
1	D	725/753 (96%)	714 (98%)	10 (1%)	1 (0%)	51	33
All	All	2899/3012 (96%)	2835 (98%)	57 (2%)	7 (0%)	47	30

5 of 7 Ramachandran outliers are listed below:

Mol	Chain	Res	Type
1	A	710	ILE
1	A	75	SER
1	A	709	LYS
1	B	75	SER
1	C	75	SER

5.3.2 Protein sidechains [i](#)

In the following table, the Percentiles column shows the percent sidechain outliers of the chain as a percentile score with respect to all X-ray entries followed by that with respect to entries of similar resolution.

The Analysed column shows the number of residues for which the sidechain conformation was analysed, and the total number of residues.

Mol	Chain	Analysed	Rotameric	Outliers	Percentiles	
1	A	612/634 (96%)	595 (97%)	17 (3%)	43	25
1	B	609/634 (96%)	579 (95%)	30 (5%)	25	9
1	C	611/634 (96%)	578 (95%)	33 (5%)	22	7
1	D	611/634 (96%)	584 (96%)	27 (4%)	28	11
All	All	2443/2536 (96%)	2336 (96%)	107 (4%)	29	11

5 of 107 residues with a non-rotameric sidechain are listed below:

Mol	Chain	Res	Type
1	C	61	ARG
1	C	432	PRO
1	D	584	LYS
1	C	159[A]	ILE
1	C	227	TRP

Some sidechains can be flipped to improve hydrogen bonding and reduce clashes. 5 of 26 such sidechains are listed below:

Mol	Chain	Res	Type
1	C	252	ASN
1	C	507	HIS
1	D	629	HIS
1	C	368	GLN
1	C	459	ASN

5.3.3 RNA [i](#)

There are no RNA molecules in this entry.

5.4 Non-standard residues in protein, DNA, RNA chains [i](#)

4 non-standard protein/DNA/RNA residues are modelled in this entry.

In the following table, the Counts columns list the number of bonds (or angles) for which Mogul statistics could be retrieved, the number of bonds (or angles) that are observed in the model and the number of bonds (or angles) that are defined in the Chemical Component Dictionary. The Link column lists molecule types, if any, to which the group is linked. The Z score for a bond length (or angle) is the number of standard deviations the observed value is removed from the expected value. A bond length (or angle) with $|Z| > 2$ is considered an outlier worth inspection. RMSZ is the root-mean-square of all Z scores of the bond lengths (or angles).

Mol	Type	Chain	Res	Link	Bond lengths			Bond angles		
					Counts	RMSZ	# Z > 2	Counts	RMSZ	# Z > 2
1	OCS	B	669	1	7,8,9	2.22	2 (28%)	6,11,13	3.17	3 (50%)
1	OCS	C	669	1	7,8,9	1.79	2 (28%)	6,11,13	2.54	3 (50%)
1	OCS	A	669	1	7,8,9	1.87	2 (28%)	6,11,13	1.98	2 (33%)
1	OCS	D	669	1	7,8,9	1.97	1 (14%)	6,11,13	3.14	3 (50%)

In the following table, the Chirals column lists the number of chiral outliers, the number of chiral centers analysed, the number of these observed in the model and the number defined in the

Chemical Component Dictionary. Similar counts are reported in the Torsion and Rings columns. '-' means no outliers of that kind were identified.

Mol	Type	Chain	Res	Link	Chirals	Torsions	Rings
1	OCS	B	669	1	-	1/4/7/9	-
1	OCS	C	669	1	-	2/4/7/9	-
1	OCS	A	669	1	-	3/4/7/9	-
1	OCS	D	669	1	-	1/4/7/9	-

The worst 5 of 7 bond length outliers are listed below:

Mol	Chain	Res	Type	Atoms	Z	Observed(Å)	Ideal(Å)
1	B	669	OCS	OD2-SG	4.93	1.65	1.47
1	A	669	OCS	OD2-SG	4.32	1.62	1.47
1	D	669	OCS	OD2-SG	4.29	1.62	1.47
1	C	669	OCS	OD2-SG	4.00	1.61	1.47
1	B	669	OCS	CB-SG	-2.38	1.68	1.77

The worst 5 of 11 bond angle outliers are listed below:

Mol	Chain	Res	Type	Atoms	Z	Observed(°)	Ideal(°)
1	D	669	OCS	OD1-SG-CB	6.61	114.79	106.94
1	B	669	OCS	OD1-SG-CB	6.35	114.49	106.94
1	C	669	OCS	OD2-SG-CB	4.03	112.17	105.74
1	A	669	OCS	OD3-SG-CB	-3.72	102.51	106.94
1	C	669	OCS	OD1-SG-CB	-3.29	103.03	106.94

There are no chirality outliers.

5 of 7 torsion outliers are listed below:

Mol	Chain	Res	Type	Atoms
1	B	669	OCS	N-CA-CB-SG
1	C	669	OCS	N-CA-CB-SG
1	A	669	OCS	N-CA-CB-SG
1	A	669	OCS	CA-CB-SG-OD2
1	D	669	OCS	N-CA-CB-SG

There are no ring outliers.

1 monomer is involved in 1 short contact:

Mol	Chain	Res	Type	Clashes	Symm-Clashes
1	A	669	OCS	1	0

5.5 Carbohydrates [i](#)

There are no carbohydrates in this entry.

5.6 Ligand geometry [i](#)

8 ligands are modelled in this entry.

In the following table, the Counts columns list the number of bonds (or angles) for which Mogul statistics could be retrieved, the number of bonds (or angles) that are observed in the model and the number of bonds (or angles) that are defined in the Chemical Component Dictionary. The Link column lists molecule types, if any, to which the group is linked. The Z score for a bond length (or angle) is the number of standard deviations the observed value is removed from the expected value. A bond length (or angle) with $|Z| > 2$ is considered an outlier worth inspection. RMSZ is the root-mean-square of all Z scores of the bond lengths (or angles).

Mol	Type	Chain	Res	Link	Bond lengths			Bond angles		
					Counts	RMSZ	# Z > 2	Counts	RMSZ	# Z > 2
2	HDD	B	801[A]	1,4	38,52,52	1.45	6 (15%)	28,89,89	3.28	17 (60%)
3	HEM	C	802[B]	1	27,50,50	2.07	7 (25%)	17,82,82	2.88	6 (35%)
2	HDD	D	801[A]	1	38,52,52	1.96	9 (23%)	28,89,89	2.78	13 (46%)
3	HEM	A	802[B]	1	27,50,50	2.09	8 (29%)	17,82,82	2.76	7 (41%)
3	HEM	B	802[B]	1	27,50,50	2.23	10 (37%)	17,82,82	2.87	6 (35%)
3	HEM	D	802[B]	1	27,50,50	2.47	9 (33%)	17,82,82	3.40	8 (47%)
2	HDD	A	801[A]	1	38,52,52	1.51	8 (21%)	28,89,89	3.27	14 (50%)
2	HDD	C	801[A]	1	38,52,52	1.60	7 (18%)	28,89,89	3.23	14 (50%)

In the following table, the Chirals column lists the number of chiral outliers, the number of chiral centers analysed, the number of these observed in the model and the number defined in the Chemical Component Dictionary. Similar counts are reported in the Torsion and Rings columns. '-' means no outliers of that kind were identified.

Mol	Type	Chain	Res	Link	Chirals	Torsions	Rings
2	HDD	B	801[A]	1,4	-	0/3/89/89	0/1/9/9
3	HEM	C	802[B]	1	-	0/6/54/54	-
2	HDD	D	801[A]	1	-	0/3/89/89	0/1/9/9
3	HEM	A	802[B]	1	-	0/6/54/54	-
3	HEM	B	802[B]	1	-	0/6/54/54	-
3	HEM	D	802[B]	1	-	0/6/54/54	-
2	HDD	A	801[A]	1	-	0/3/89/89	0/1/9/9
2	HDD	C	801[A]	1	-	0/3/89/89	0/1/9/9

The worst 5 of 64 bond length outliers are listed below:

Mol	Chain	Res	Type	Atoms	Z	Observed(Å)	Ideal(Å)
3	D	802[B]	HEM	C1A-NA	6.12	1.48	1.36
3	B	802[B]	HEM	C4A-NA	5.84	1.48	1.36
3	A	802[B]	HEM	C1A-NA	5.62	1.47	1.36
3	B	802[B]	HEM	C1A-NA	5.62	1.47	1.36
3	D	802[B]	HEM	C4A-NA	5.42	1.47	1.36

The worst 5 of 85 bond angle outliers are listed below:

Mol	Chain	Res	Type	Atoms	Z	Observed(°)	Ideal(°)
2	C	801[A]	HDD	O1D-CGD-O2D	9.31	129.11	120.80
2	A	801[A]	HDD	O1D-CGD-O2D	8.80	128.66	120.80
2	B	801[A]	HDD	O1D-CGD-O2D	8.06	127.99	120.80
3	D	802[B]	HEM	CAA-CBA-CGA	-7.67	99.81	112.67
2	B	801[A]	HDD	CAA-CBA-CGA	-6.60	101.61	112.67

There are no chirality outliers.

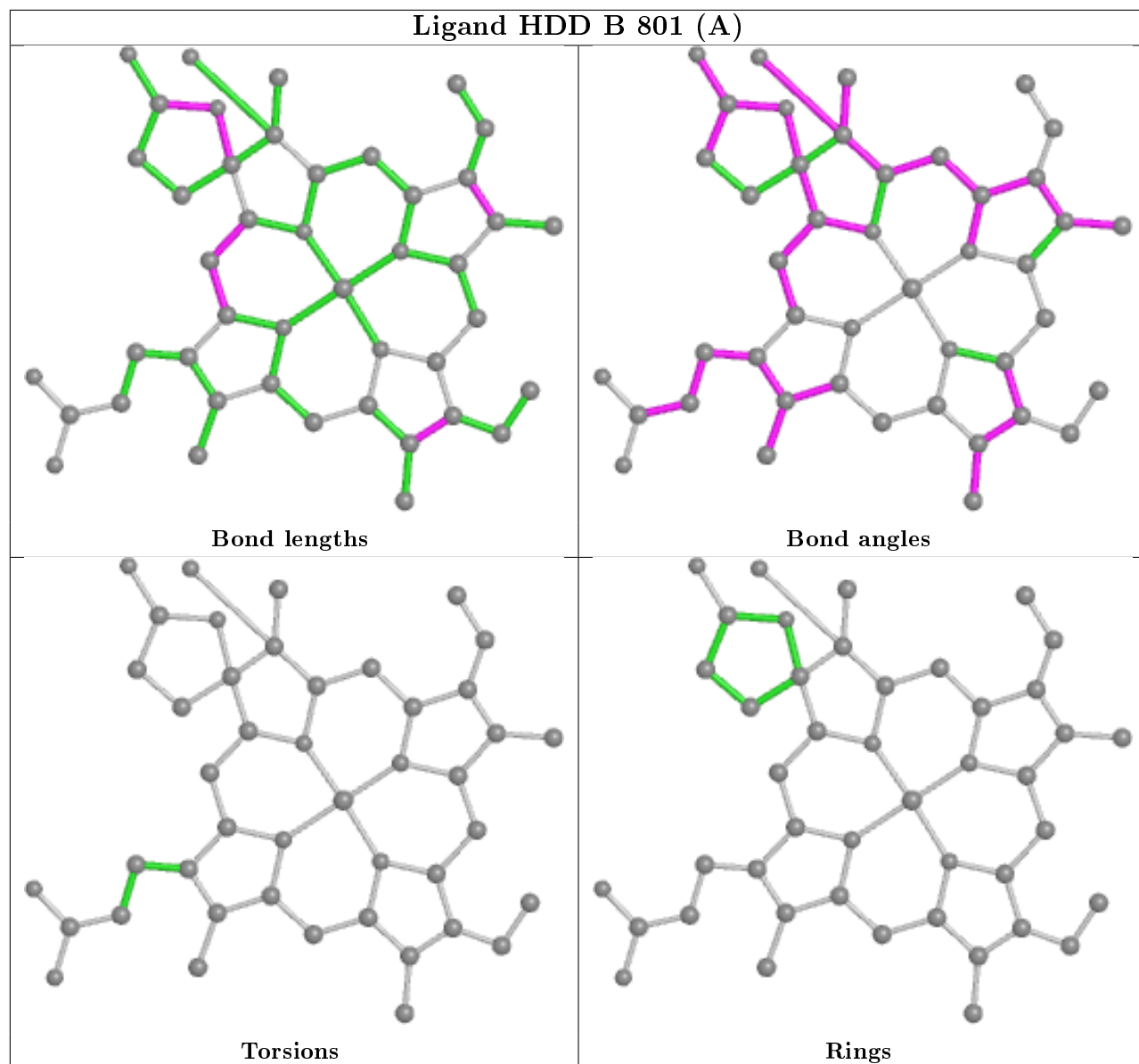
There are no torsion outliers.

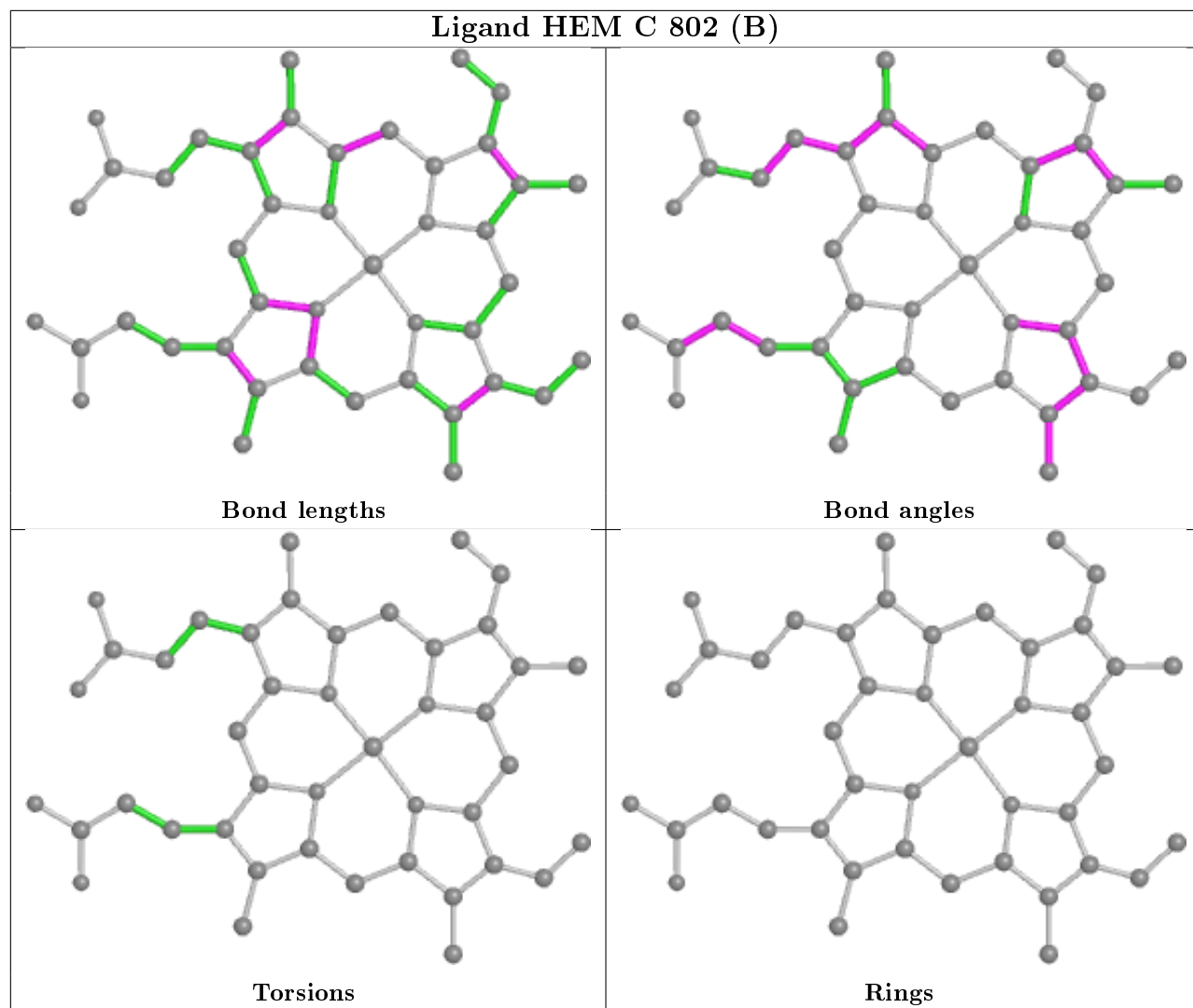
There are no ring outliers.

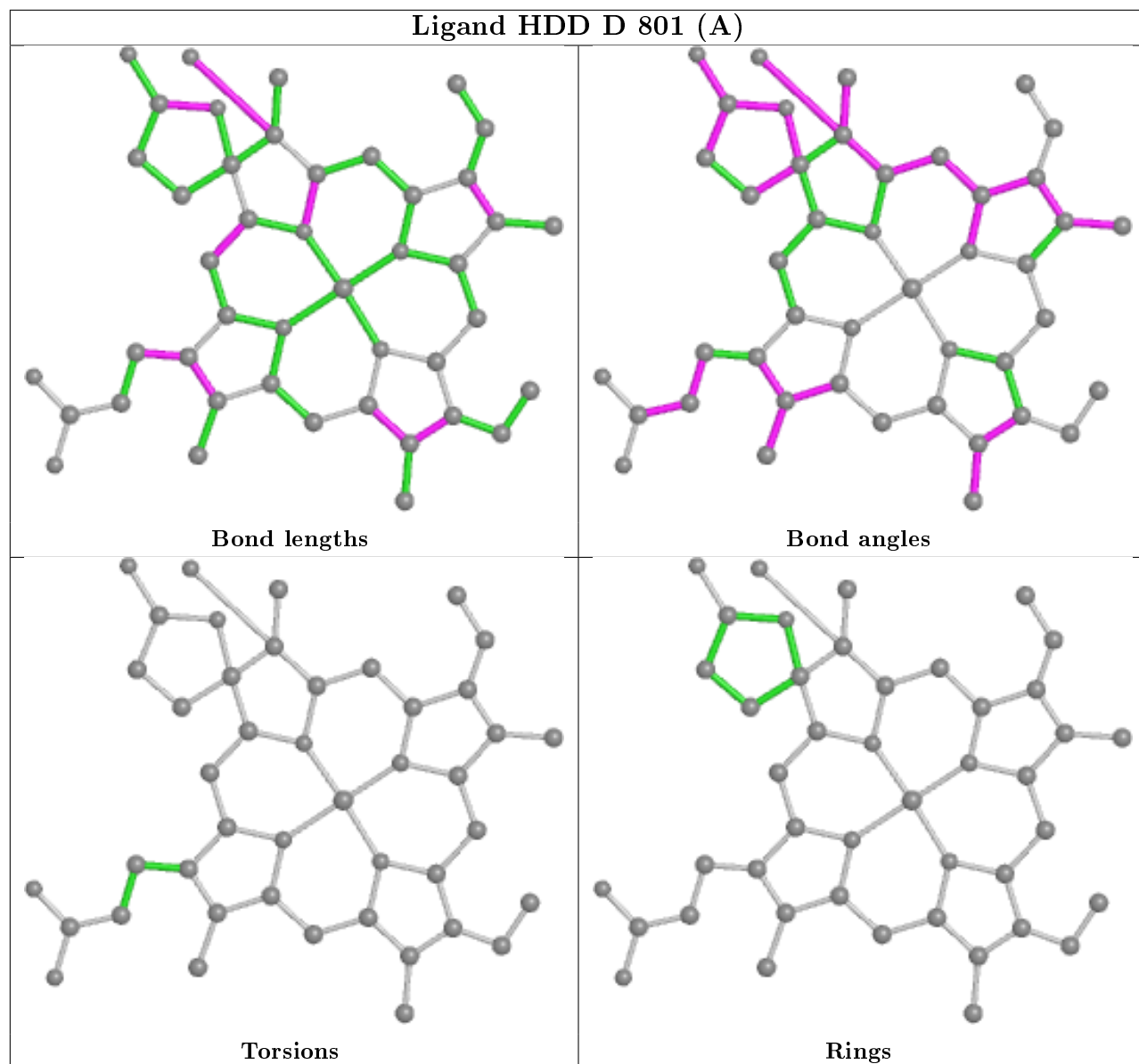
8 monomers are involved in 51 short contacts:

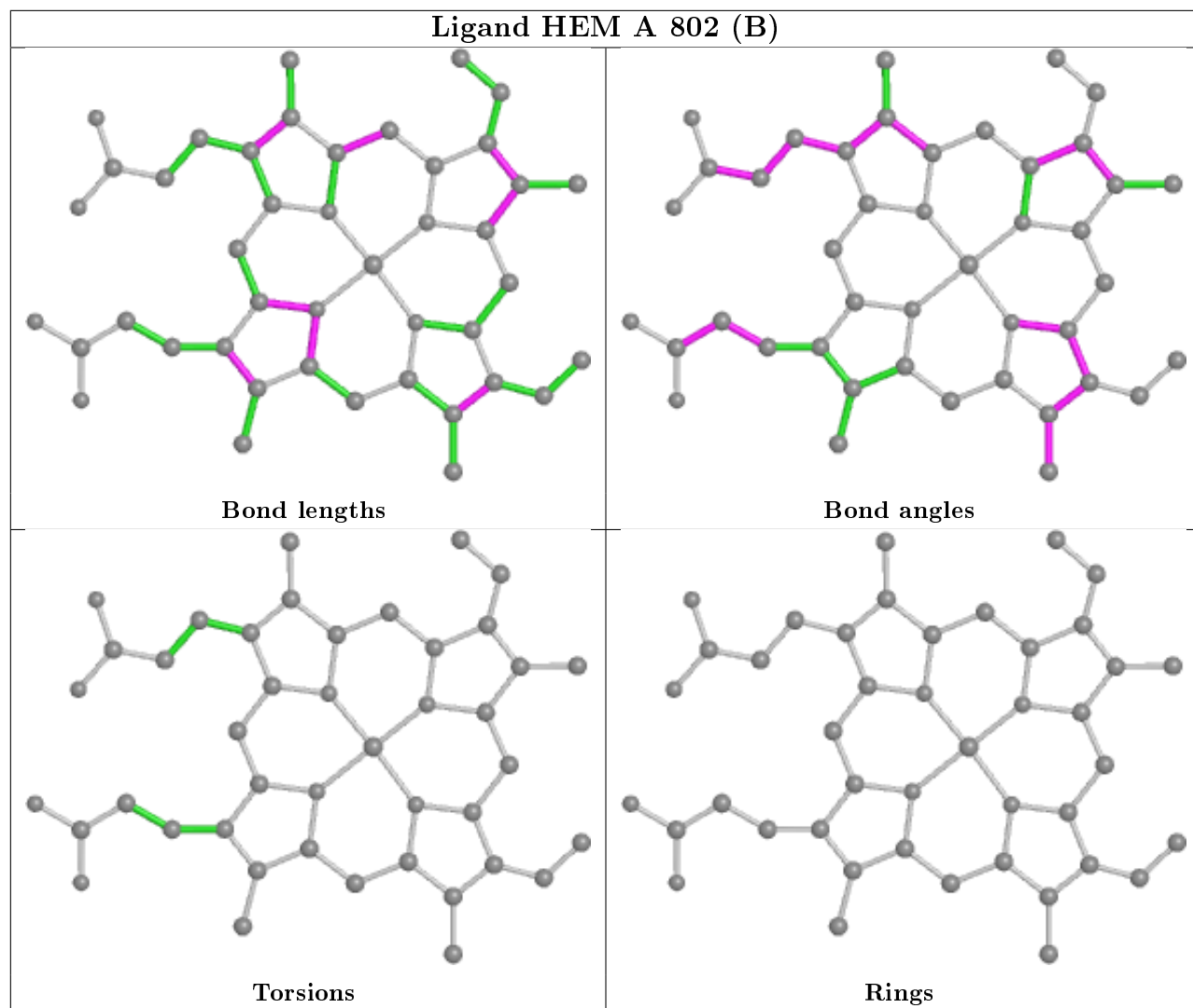
Mol	Chain	Res	Type	Clashes	Symm-Clashes
2	B	801[A]	HDD	3	0
3	C	802[B]	HEM	15	0
2	D	801[A]	HDD	4	0
3	A	802[B]	HEM	8	0
3	B	802[B]	HEM	6	0
3	D	802[B]	HEM	9	0
2	A	801[A]	HDD	4	0
2	C	801[A]	HDD	2	0

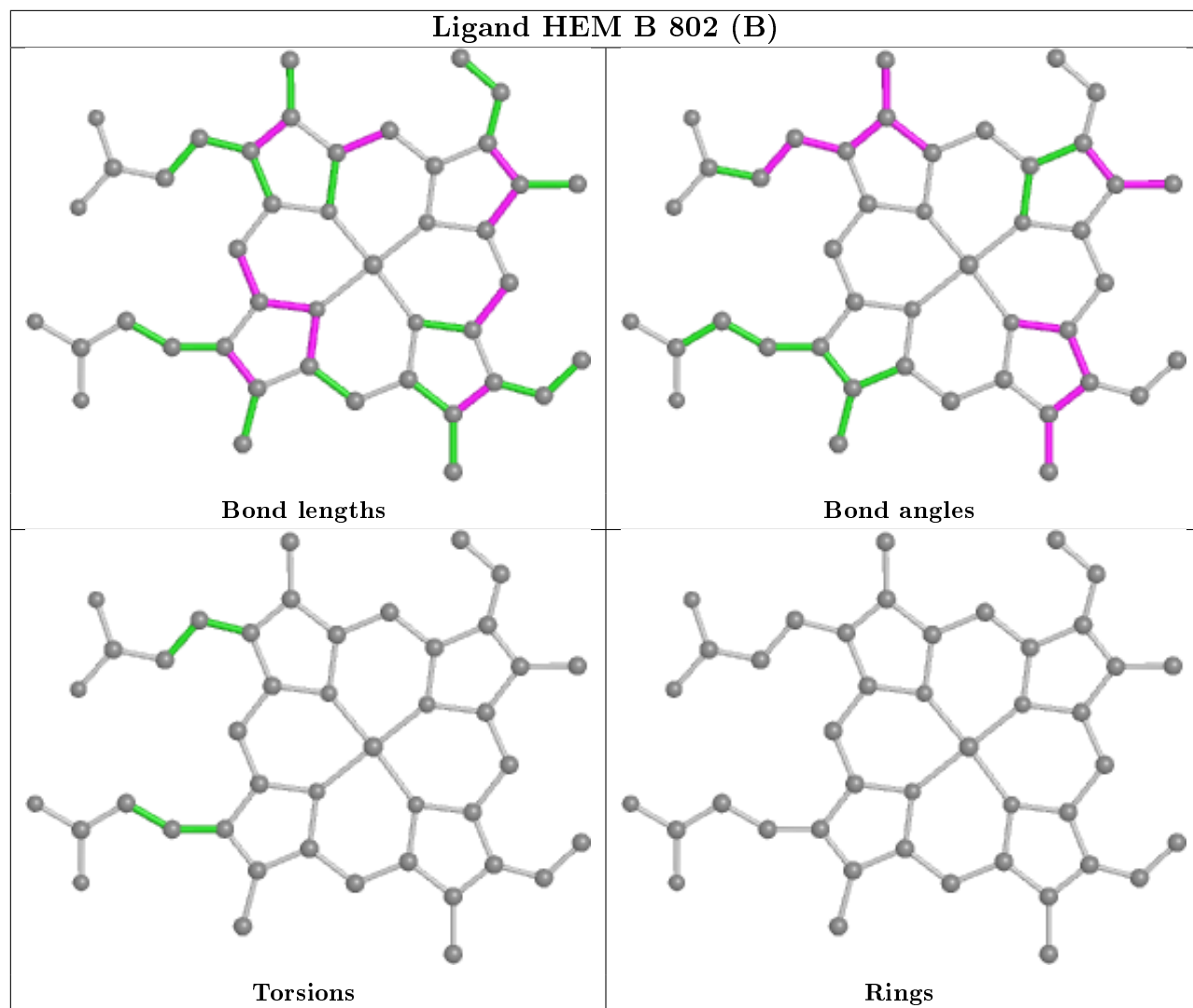
The following is a two-dimensional graphical depiction of Mogul quality analysis of bond lengths, bond angles, torsion angles, and ring geometry for all instances of the Ligand of Interest. In addition, ligands with molecular weight > 250 and outliers as shown on the validation Tables will also be included. For torsion angles, if less than 5% of the Mogul distribution of torsion angles is within 10 degrees of the torsion angle in question, then that torsion angle is considered an outlier. Any bond that is central to one or more torsion angles identified as an outlier by Mogul will be highlighted in the graph. For rings, the root-mean-square deviation (RMSD) between the ring in question and similar rings identified by Mogul is calculated over all ring torsion angles. If the average RMSD is greater than 60 degrees and the minimal RMSD between the ring in question and any Mogul-identified rings is also greater than 60 degrees, then that ring is considered an outlier. The outliers are highlighted in purple. The color gray indicates Mogul did not find sufficient equivalents in the CSD to analyse the geometry.

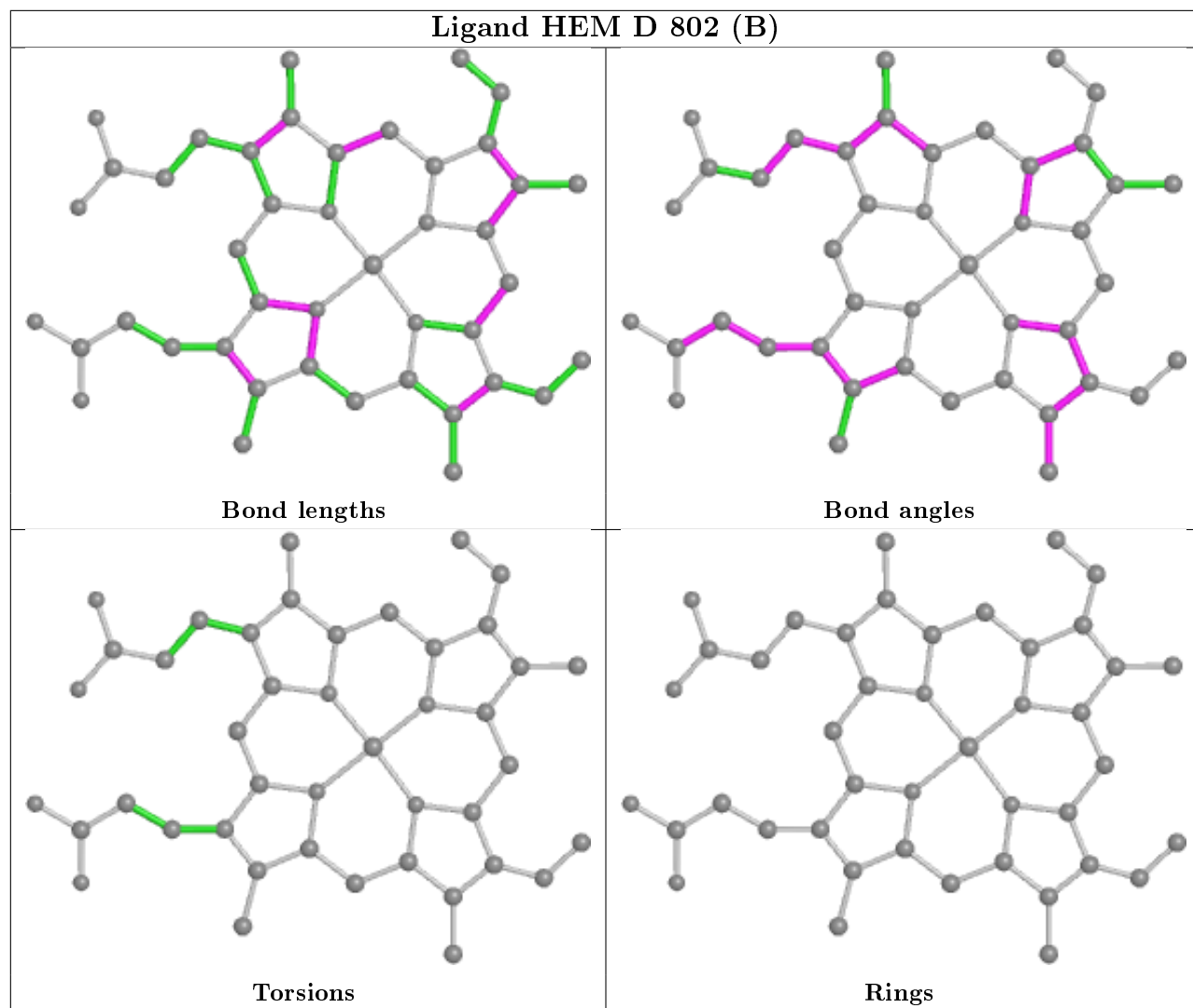


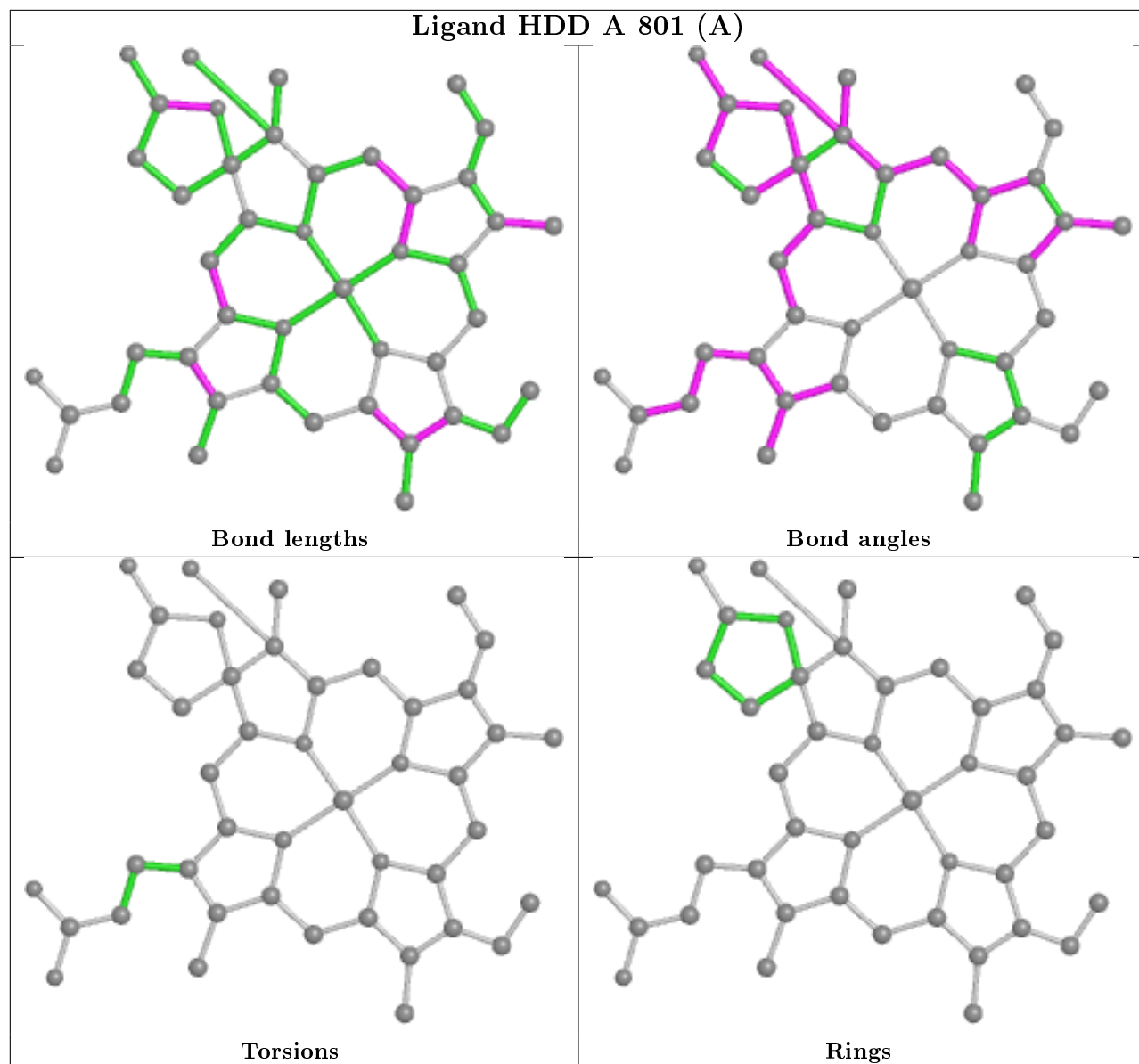


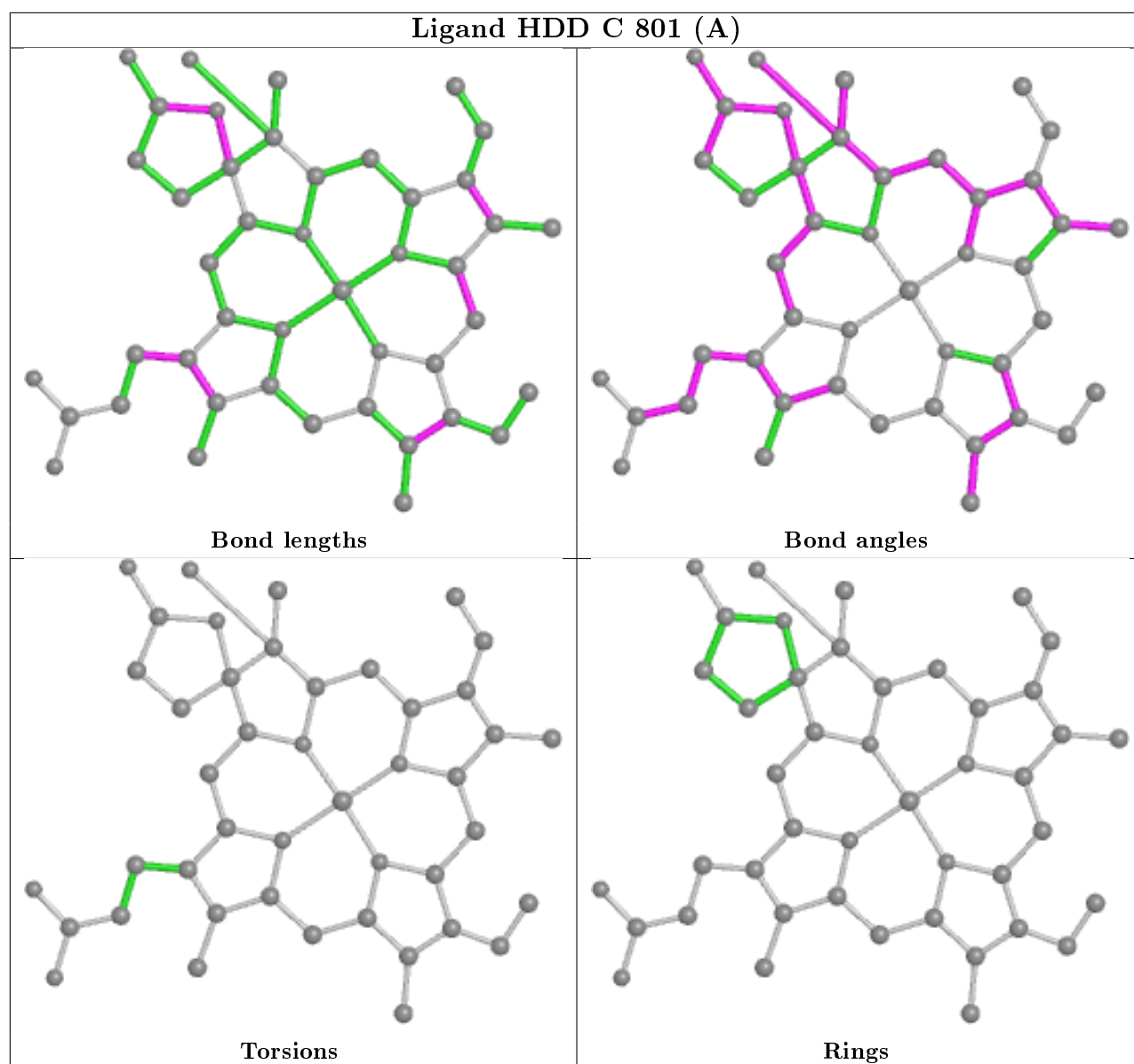












5.7 Other polymers [i](#)

There are no such residues in this entry.

5.8 Polymer linkage issues [i](#)

There are no chain breaks in this entry.

6 Fit of model and data [i](#)

6.1 Protein, DNA and RNA chains [i](#)

In the following table, the column labelled ‘#RSRZ> 2’ contains the number (and percentage) of RSRZ outliers, followed by percent RSRZ outliers for the chain as percentile scores relative to all X-ray entries and entries of similar resolution. The OWAB column contains the minimum, median, 95th percentile and maximum values of the occupancy-weighted average B-factor per residue. The column labelled ‘Q< 0.9’ lists the number of (and percentage) of residues with an average occupancy less than 0.9.

Mol	Chain	Analysed	<RSRZ>	#RSRZ>2	OWAB(Å ²)	Q<0.9
1	A	725/753 (96%)	-0.39	9 (1%) 79 82	4, 11, 29, 60	1 (0%)
1	B	725/753 (96%)	-0.26	26 (3%) 42 47	5, 13, 36, 56	1 (0%)
1	C	725/753 (96%)	-0.31	20 (2%) 53 57	5, 12, 34, 56	1 (0%)
1	D	725/753 (96%)	-0.38	10 (1%) 75 79	4, 11, 28, 58	1 (0%)
All	All	2900/3012 (96%)	-0.33	65 (2%) 62 66	4, 11, 33, 60	4 (0%)

The worst 5 of 65 RSRZ outliers are listed below:

Mol	Chain	Res	Type	RSRZ
1	B	726	GLY	6.0
1	B	713	GLN	4.2
1	C	726	GLY	4.0
1	B	32	GLU	3.9
1	B	28	SER	3.6

6.2 Non-standard residues in protein, DNA, RNA chains [i](#)

In the following table, the Atoms column lists the number of modelled atoms in the group and the number defined in the chemical component dictionary. The B-factors column lists the minimum, median, 95th percentile and maximum values of B factors of atoms in the group. The column labelled ‘Q< 0.9’ lists the number of atoms with occupancy less than 0.9.

Mol	Type	Chain	Res	Atoms	RSCC	RSR	B-factors(Å ²)	Q<0.9
1	OCS	B	669	9/10	0.93	0.14	25,27,36,37	0
1	OCS	A	669	9/10	0.93	0.11	15,19,27,28	0
1	OCS	C	669	9/10	0.94	0.14	25,28,36,40	0
1	OCS	D	669	9/10	0.95	0.14	18,21,28,33	0

6.3 Carbohydrates [i](#)

There are no carbohydrates in this entry.

6.4 Ligands [i](#)

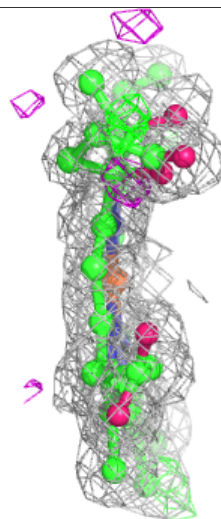
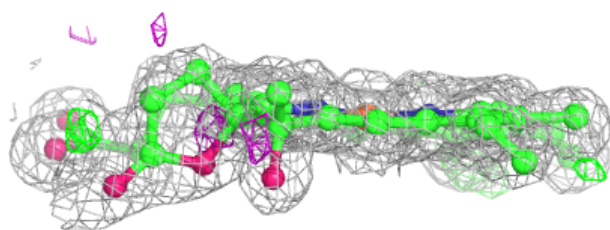
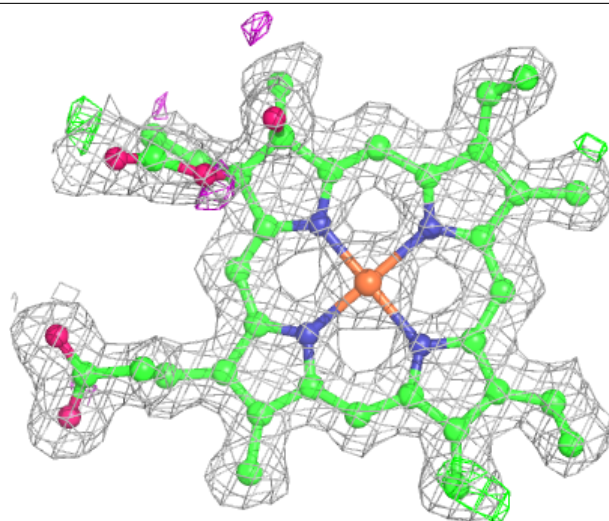
In the following table, the Atoms column lists the number of modelled atoms in the group and the number defined in the chemical component dictionary. The B-factors column lists the minimum, median, 95th percentile and maximum values of B factors of atoms in the group. The column labelled 'Q< 0.9' lists the number of atoms with occupancy less than 0.9.

Mol	Type	Chain	Res	Atoms	RSCC	RSR	B-factors(Å ²)	Q<0.9
2	HDD	B	801[A]	44/44	0.98	0.09	5,6,10,13	44
2	HDD	D	801[A]	44/44	0.98	0.09	4,5,10,12	44
3	HEM	B	802[B]	43/43	0.98	0.09	4,5,6,6	43
2	HDD	A	801[A]	44/44	0.98	0.09	4,6,9,11	44
3	HEM	C	802[B]	43/43	0.99	0.09	3,5,5,5	43
3	HEM	D	802[B]	43/43	0.99	0.09	3,4,5,5	43
3	HEM	A	802[B]	43/43	0.99	0.09	3,4,5,5	43
2	HDD	C	801[A]	44/44	0.99	0.08	5,6,9,11	44

The following is a graphical depiction of the model fit to experimental electron density of all instances of the Ligand of Interest. In addition, ligands with molecular weight > 250 and outliers as shown on the geometry validation Tables will also be included. Each fit is shown from different orientation to approximate a three-dimensional view.

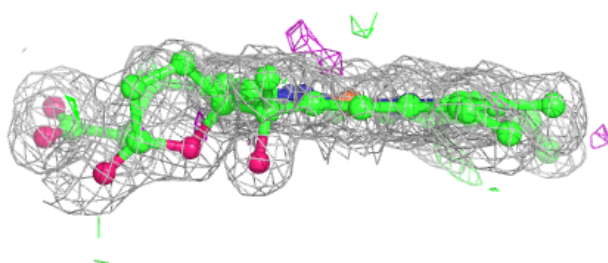
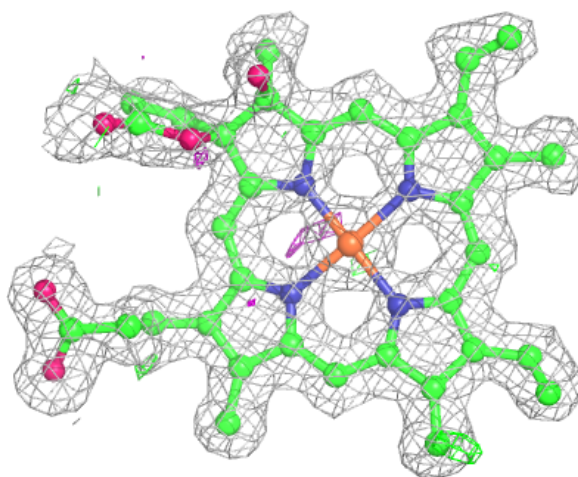
Electron density around HDD B 801 (A):

$2mF_o-DF_c$ (at 0.7 rmsd) in gray
 mF_o-DF_c (at 3 rmsd) in purple (negative)
and green (positive)



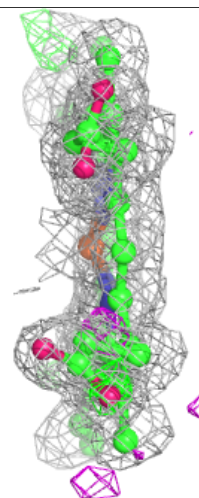
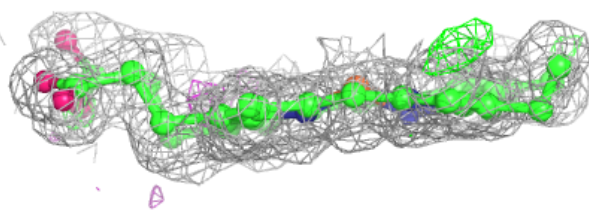
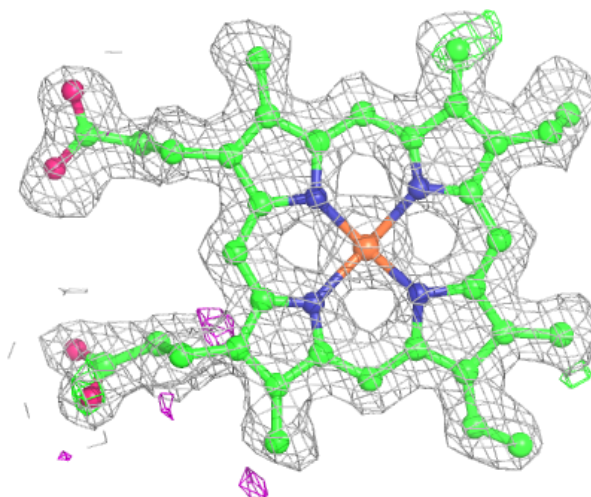
Electron density around HDD D 801 (A):

$2mF_o-DF_c$ (at 0.7 rmsd) in gray
 mF_o-DF_c (at 3 rmsd) in purple (negative)
and green (positive)



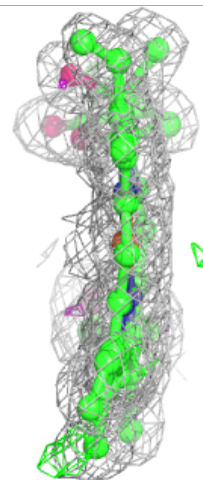
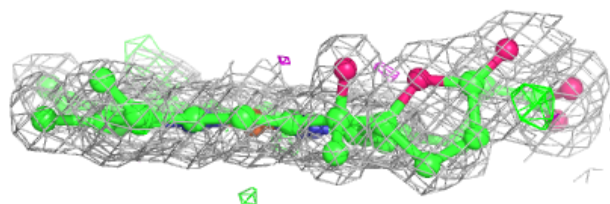
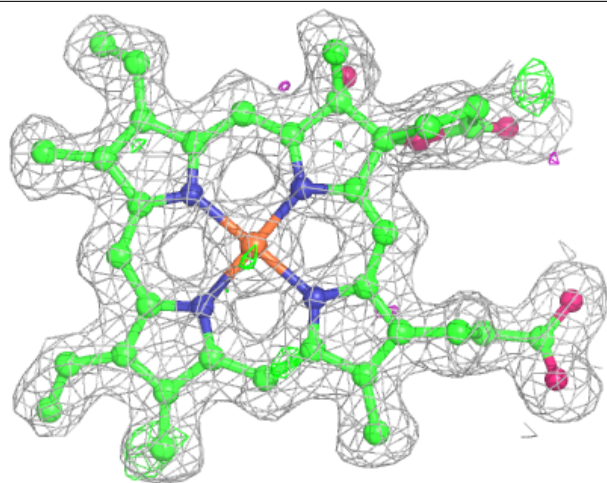
Electron density around HEM B 802 (B):

$2mF_o-DF_c$ (at 0.7 rmsd) in gray
 mF_o-DF_c (at 3 rmsd) in purple (negative)
and green (positive)



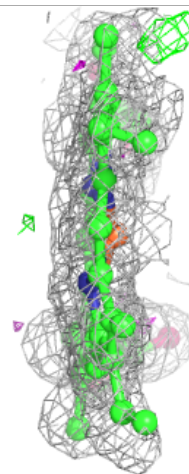
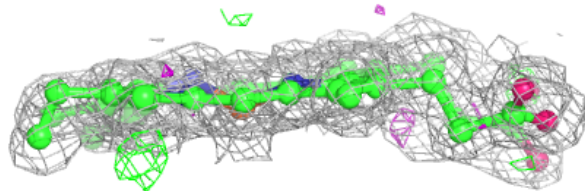
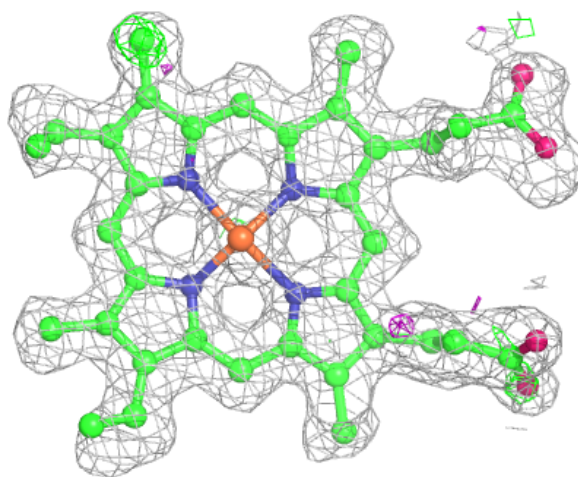
Electron density around HDD A 801 (A):

$2mF_o-DF_c$ (at 0.7 rmsd) in gray
 mF_o-DF_c (at 3 rmsd) in purple (negative)
and green (positive)



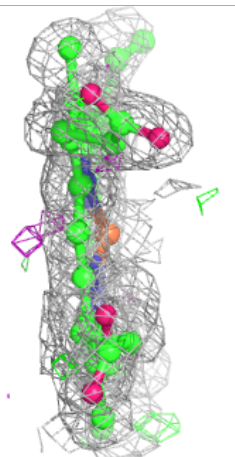
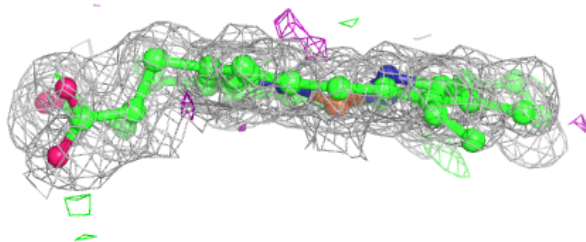
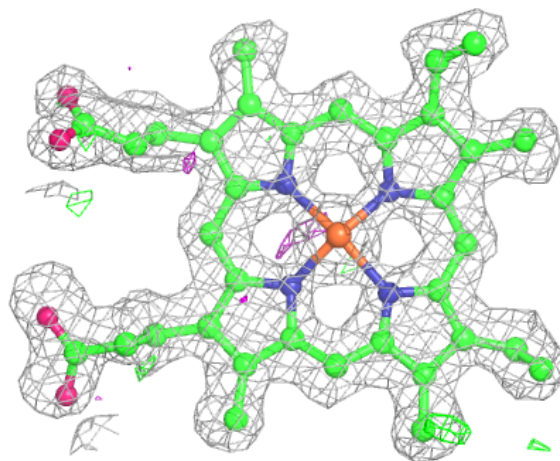
Electron density around HEM C 802 (B):

$2mF_o-DF_c$ (at 0.7 rmsd) in gray
 mF_o-DF_c (at 3 rmsd) in purple (negative)
and green (positive)



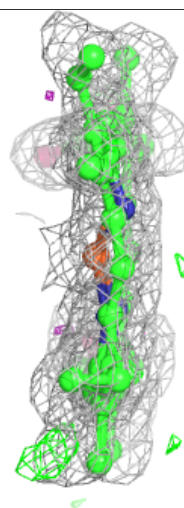
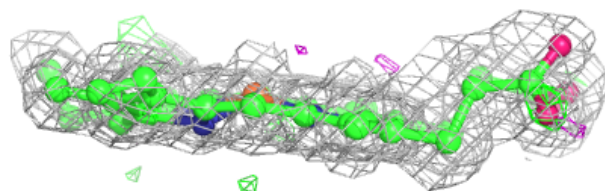
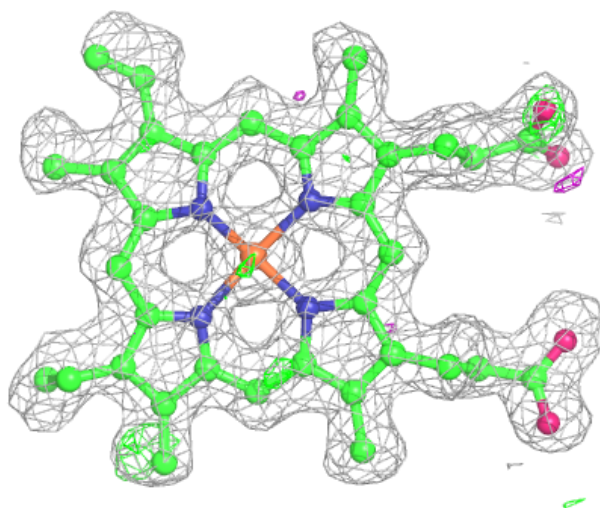
Electron density around HEM D 802 (B):

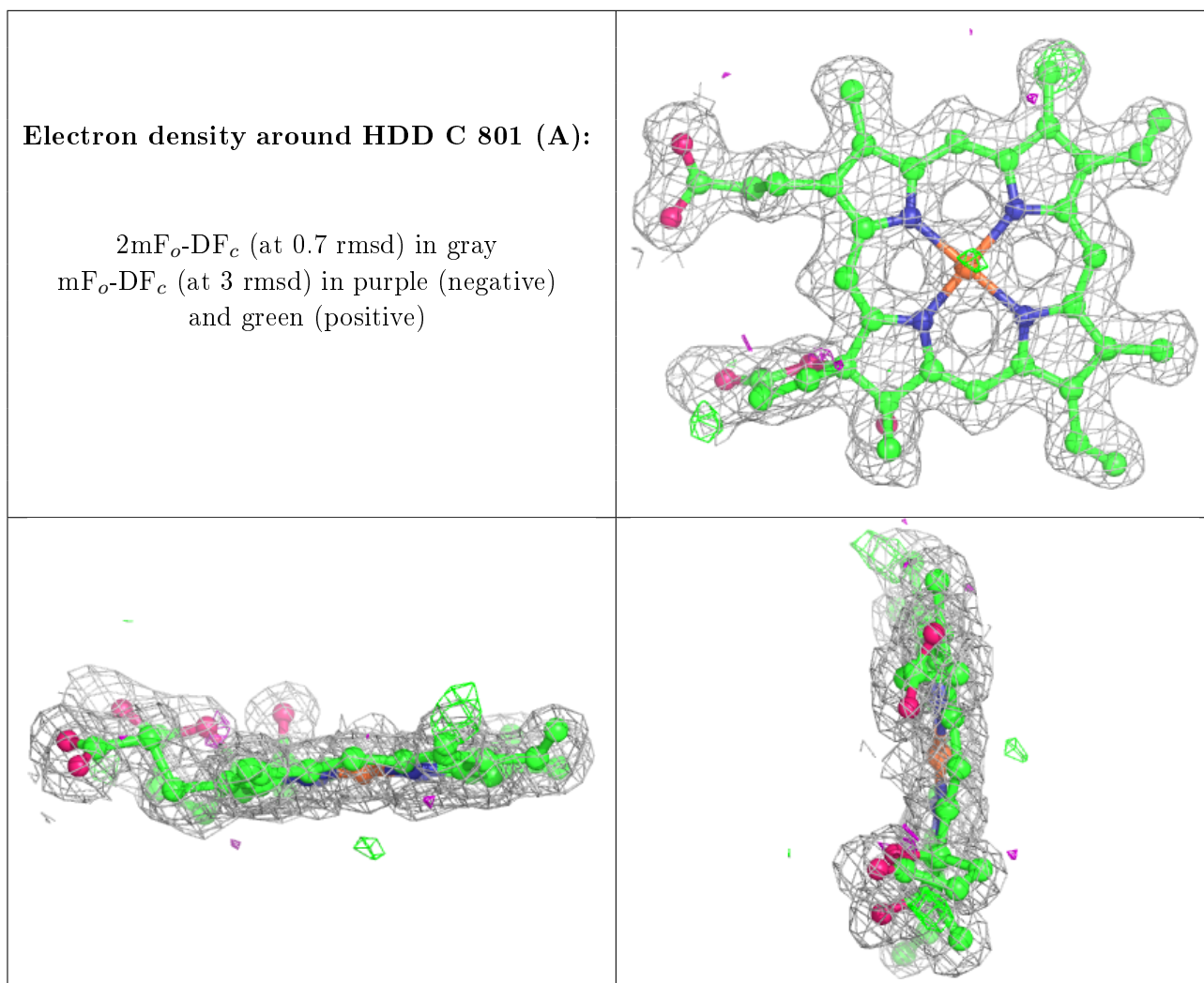
$2mF_o-DF_c$ (at 0.7 rmsd) in gray
 mF_o-DF_c (at 3 rmsd) in purple (negative)
and green (positive)



Electron density around HEM A 802 (B):

$2mF_o-DF_c$ (at 0.7 rmsd) in gray
 mF_o-DF_c (at 3 rmsd) in purple (negative)
and green (positive)





6.5 Other polymers [\(i\)](#)

There are no such residues in this entry.