



Full wwPDB X-ray Structure Validation Report ⓘ

May 22, 2020 – 12:46 am BST

PDB ID : 6EN4
Title : SF3b core in complex with a splicing modulator
Authors : Cretu, C.; Pena, V.
Deposited on : 2017-10-04
Resolution : 3.08 Å(reported)

This is a Full wwPDB X-ray Structure Validation Report for a publicly released PDB entry.

We welcome your comments at validation@mail.wwpdb.org

A user guide is available at

<https://www.wwpdb.org/validation/2017/XrayValidationReportHelp>

with specific help available everywhere you see the ⓘ symbol.

The following versions of software and data (see [references ⓘ](#)) were used in the production of this report:

MolProbity : 4.02b-467
Mogul : 1.8.5 (274361), CSD as541be (2020)
Xtriage (Phenix) : 1.13
EDS : 2.11
buster-report : 1.1.7 (2018)
Percentile statistics : 20191225.v01 (using entries in the PDB archive December 25th 2019)
Refmac : 5.8.0158
CCP4 : 7.0.044 (Gargrove)
Ideal geometry (proteins) : Engh & Huber (2001)
Ideal geometry (DNA, RNA) : Parkinson et al. (1996)
Validation Pipeline (wwPDB-VP) : 2.11

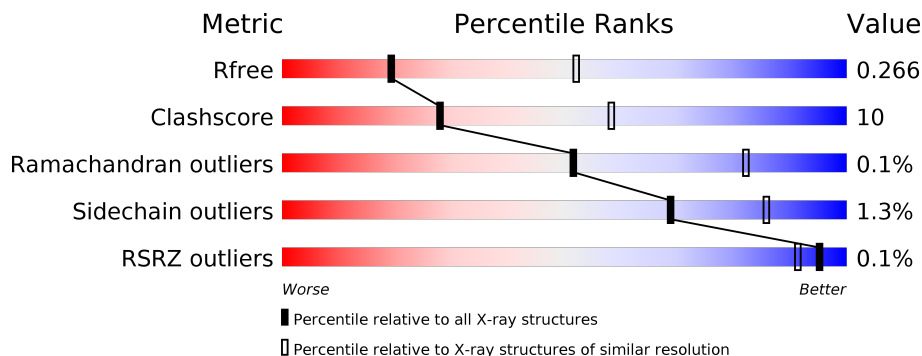
1 Overall quality at a glance

The following experimental techniques were used to determine the structure:

X-RAY DIFFRACTION





The reported resolution of this entry is 3.08 Å.

Percentile scores (ranging between 0-100) for global validation metrics of the entry are shown in the following graphic. The table shows the number of entries on which the scores are based.



Metric	Whole archive (#Entries)	Similar resolution (#Entries, resolution range(Å))
R_{free}	130704	1447 (3.10-3.06)
Clashscore	141614	1546 (3.10-3.06)
Ramachandran outliers	138981	1487 (3.10-3.06)
Sidechain outliers	138945	1486 (3.10-3.06)
RSRZ outliers	127900	1416 (3.10-3.06)

The table below summarises the geometric issues observed across the polymeric chains and their fit to the electron density. The red, orange, yellow and green segments on the lower bar indicate the fraction of residues that contain outliers for ≥ 3 , 2, 1 and 0 types of geometric quality criteria respectively. A grey segment represents the fraction of residues that are not modelled. The numeric value for each fraction is indicated below the corresponding segment, with a dot representing fractions $\leq 5\%$. The upper red bar (where present) indicates the fraction of residues that have poor fit to the electron density. The numeric value is given above the bar.

Mol	Chain	Length	Quality of chain
1	A	1209	
2	B	85	
3	C	852	
4	D	108	

2 Entry composition

There are 6 unique types of molecules in this entry. The entry contains 17246 atoms, of which 0 are hydrogens and 0 are deuteriums.

In the tables below, the ZeroOcc column contains the number of atoms modelled with zero occupancy, the AltConf column contains the number of residues with at least one atom in alternate conformation and the Trace column contains the number of residues modelled with at most 2 atoms.

- Molecule 1 is a protein called Splicing factor 3B subunit 3.

Mol	Chain	Residues	Atoms					ZeroOcc	AltConf	Trace
			Total	C	N	O	S			
1	A	1180	9263	5880	1571	1767	45	0	0	0

There are 28 discrepancies between the modelled and reference sequences:

Chain	Residue	Modelled	Actual	Comment	Reference
A	-1	VAL	-	expression tag	UNP Q15393
A	0	ASP	-	expression tag	UNP Q15393
A	?	-	GLU	deletion	UNP Q15393
A	?	-	ASP	deletion	UNP Q15393
A	?	-	PRO	deletion	UNP Q15393
A	?	-	THR	deletion	UNP Q15393
A	?	-	GLY	deletion	UNP Q15393
A	?	-	ASN	deletion	UNP Q15393
A	?	-	LYS	deletion	UNP Q15393
A	?	-	ALA	deletion	UNP Q15393
A	?	-	LEU	deletion	UNP Q15393
A	?	-	TRP	deletion	UNP Q15393
A	?	-	ASP	deletion	UNP Q15393
A	?	-	ARG	deletion	UNP Q15393
A	?	-	GLY	deletion	UNP Q15393
A	?	-	LEU	deletion	UNP Q15393
A	?	-	LEU	deletion	UNP Q15393
A	?	-	ASN	deletion	UNP Q15393
A	?	-	GLY	deletion	UNP Q15393
A	?	-	ALA	deletion	UNP Q15393
A	1200	ASP	-	expression tag	UNP Q15393
A	1201	TYR	-	expression tag	UNP Q15393
A	1202	LYS	-	expression tag	UNP Q15393
A	1203	ASP	-	expression tag	UNP Q15393
A	1204	ASP	-	expression tag	UNP Q15393
A	1205	ASP	-	expression tag	UNP Q15393
A	1206	ASP	-	expression tag	UNP Q15393

Continued on next page...

Continued from previous page...

Chain	Residue	Modelled	Actual	Comment	Reference
A	1207	LYS	-	expression tag	UNP Q15393

- Molecule 2 is a protein called Splicing factor 3B subunit 5.

Mol	Chain	Residues	Atoms					ZeroOcc	AltConf	Trace
			Total	C	N	O	S			
2	B	65	535	340	93	97	5	0	0	0

- Molecule 3 is a protein called Splicing factor 3B subunit 1.

Mol	Chain	Residues	Atoms					ZeroOcc	AltConf	Trace
			Total	C	N	O	S			
3	C	842	6707	4307	1152	1209	39	0	0	0

- Molecule 4 is a protein called PHD finger-like domain-containing protein 5A.

Mol	Chain	Residues	Atoms					ZeroOcc	AltConf	Trace
			Total	C	N	O	S			
4	D	93	700	429	123	135	13	0	0	0

There are 10 discrepancies between the modelled and reference sequences:

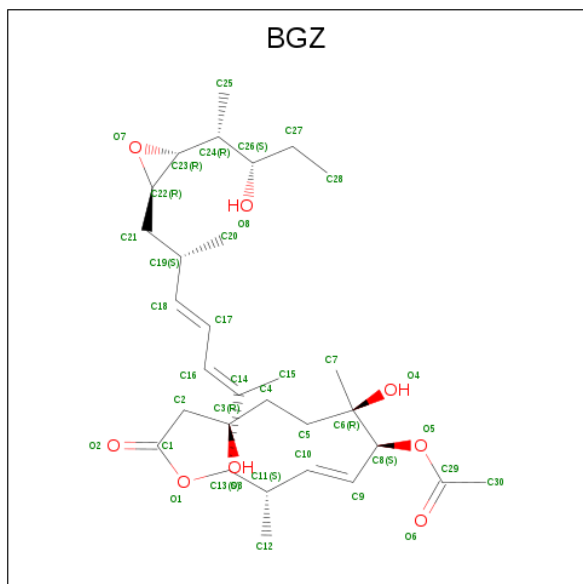
Chain	Residue	Modelled	Actual	Comment	Reference
D	-9	GLY	-	expression tag	UNP Q7RTV0
D	-8	PRO	-	expression tag	UNP Q7RTV0
D	-7	LEU	-	expression tag	UNP Q7RTV0
D	-6	GLY	-	expression tag	UNP Q7RTV0
D	-5	SER	-	expression tag	UNP Q7RTV0
D	-4	PRO	-	expression tag	UNP Q7RTV0
D	-3	GLY	-	expression tag	UNP Q7RTV0
D	-2	SER	-	expression tag	UNP Q7RTV0
D	-1	ARG	-	expression tag	UNP Q7RTV0
D	0	ALA	-	expression tag	UNP Q7RTV0

- Molecule 5 is ZINC ION (three-letter code: ZN) (formula: Zn).

Mol	Chain	Residues	Atoms		ZeroOcc	AltConf
5	D	3	Total	Zn	0	0
			3	3		

- Molecule 6 is [(2 {S},3 {S},4 {E},6 {S},7 {R},10 {R})-3,7-dimethyl-2-[(2 {E},4 {E},6 {

S)-6-methyl-7-[(2 {R},3 {R})-3-[(2 {R},3 {S})-3-oxidanylpentan-2-yl]oxiran-2-yl]hepta-2,4-dien-2-yl]-7,10-bis(oxidanyl)-12-oxidanylidene-1-oxacyclododec-4-en-6-yl] ethanoate (three-letter code: BGZ) (formula: C₃₀H₄₈O₈).

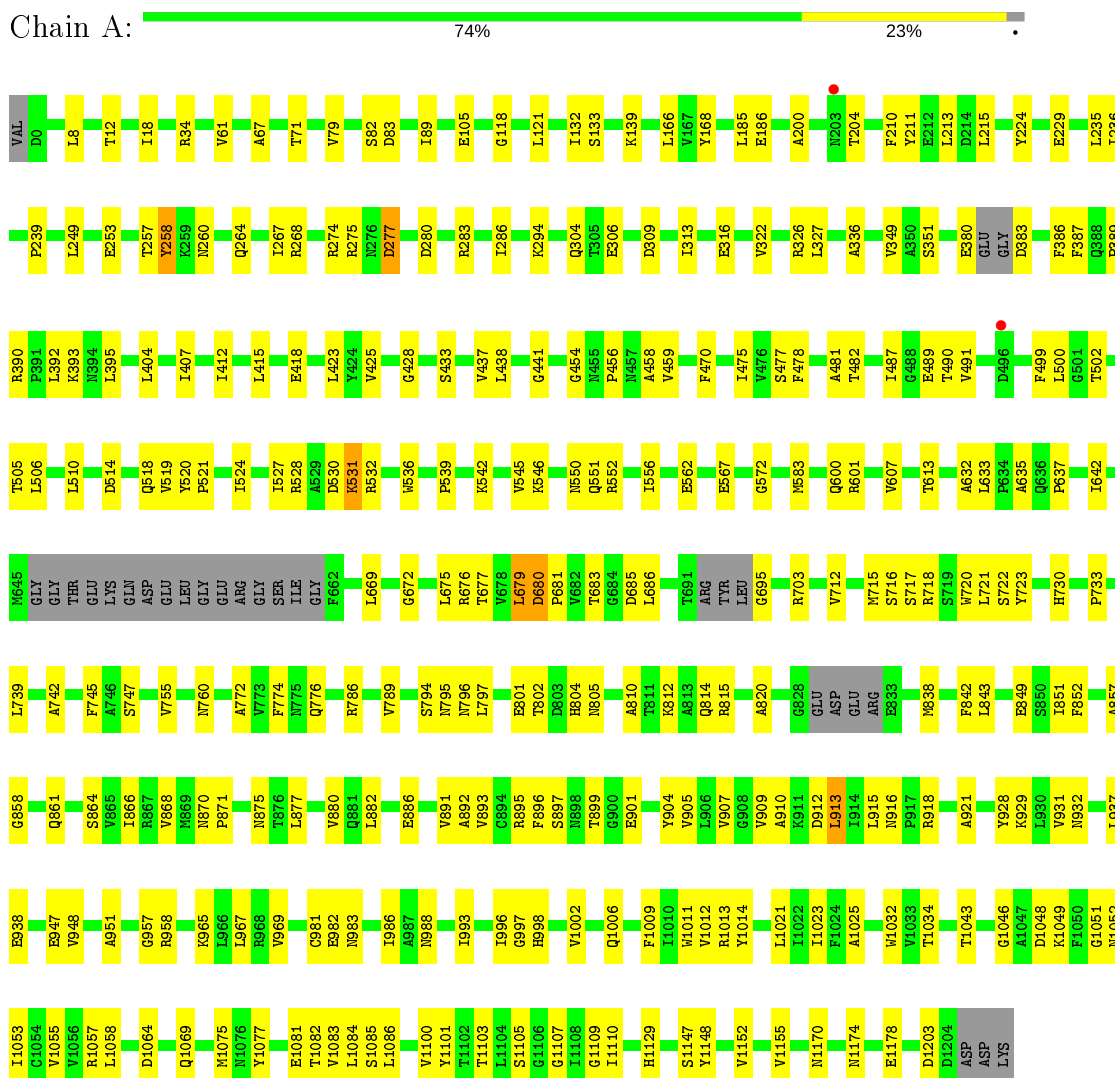


Mol	Chain	Residues	Atoms		ZeroOcc	AltConf	
6	D	1	Total	C	O	0	0
			38	30	8		

3 Residue-property plots

These plots are drawn for all protein, RNA and DNA chains in the entry. The first graphic for a chain summarises the proportions of the various outlier classes displayed in the second graphic. The second graphic shows the sequence view annotated by issues in geometry and electron density. Residues are color-coded according to the number of geometric quality criteria for which they contain at least one outlier: green = 0, yellow = 1, orange = 2 and red = 3 or more. A red dot above a residue indicates a poor fit to the electron density ($RSRZ > 2$). Stretches of 2 or more consecutive residues without any outlier are shown as a green connector. Residues present in the sample, but not in the model, are shown in grey.

- Molecule 1: Splicing factor 3B subunit 3



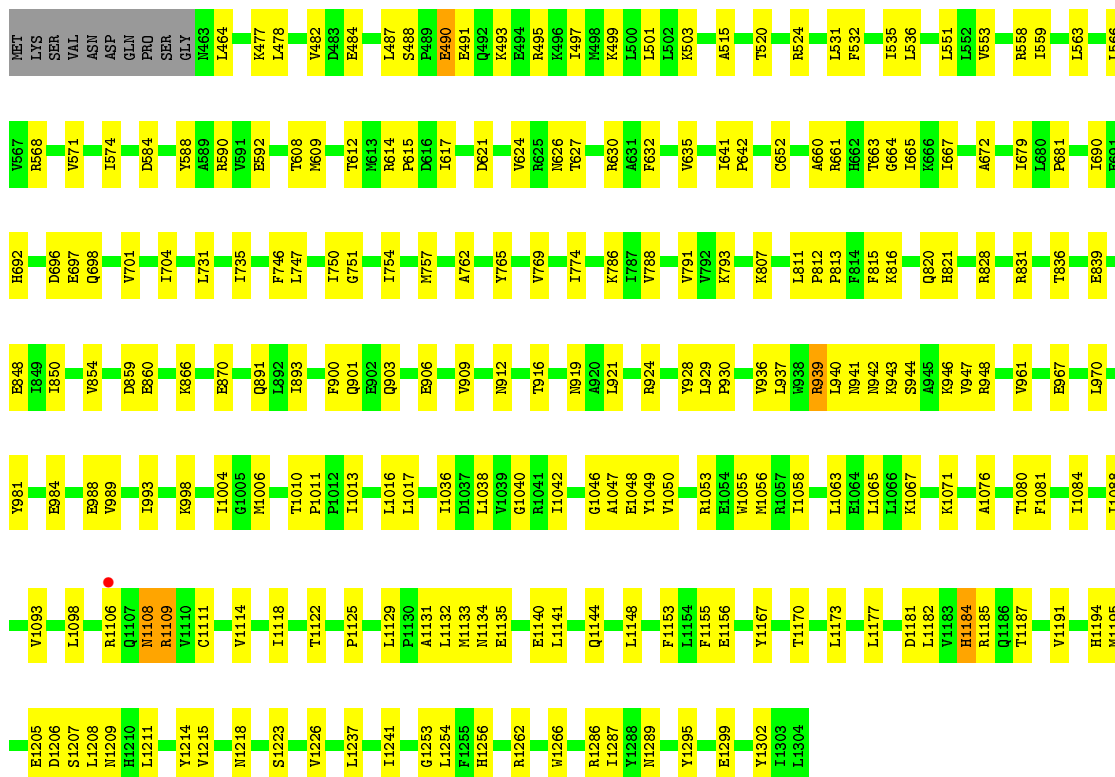
- Molecule 2: Splicing factor 3B subunit 5





- Molecule 3: Splicing factor 3B subunit 1

Chain C: 72% 26%



- Molecule 4: PHD finger-like domain-containing protein 5A

Chain D: 69% 18% 14%



4 Data and refinement statistics

Property	Value	Source
Space group	P 21 21 21	Depositor
Cell constants a, b, c, α , β , γ	106.07Å 154.57Å 210.21Å 90.00° 90.00° 90.00°	Depositor
Resolution (Å)	48.79 – 3.08 48.79 – 3.08	Depositor EDS
% Data completeness (in resolution range)	100.0 (48.79-3.08) 99.7 (48.79-3.08)	Depositor EDS
R_{merge}	(Not available)	Depositor
R_{sym}	(Not available)	Depositor
$\langle I/\sigma(I) \rangle$ ¹	1.56 (at 3.07Å)	Xtrriage
Refinement program	PHENIX 1.10.1-2155	Depositor
R, R_{free}	0.233 , 0.266 0.234 , 0.266	Depositor DCC
R_{free} test set	3134 reflections (4.86%)	wwPDB-VP
Wilson B-factor (Å ²)	103.6	Xtrriage
Anisotropy	0.345	Xtrriage
Bulk solvent k_{sol} (e/Å ³), B_{sol} (Å ²)	0.28 , 50.9	EDS
L-test for twinning ²	$\langle L \rangle = 0.48$, $\langle L^2 \rangle = 0.31$	Xtrriage
Estimated twinning fraction	No twinning to report.	Xtrriage
F_o, F_c correlation	0.94	EDS
Total number of atoms	17246	wwPDB-VP
Average B, all atoms (Å ²)	105.0	wwPDB-VP

Xtrriage's analysis on translational NCS is as follows: *The largest off-origin peak in the Patterson function is 2.48% of the height of the origin peak. No significant pseudotranslation is detected.*

¹ Intensities estimated from amplitudes.

² Theoretical values of $\langle |L| \rangle$, $\langle L^2 \rangle$ for acentric reflections are 0.5, 0.333 respectively for untwinned datasets, and 0.375, 0.2 for perfectly twinned datasets.

5 Model quality [i](#)

5.1 Standard geometry [i](#)

Bond lengths and bond angles in the following residue types are not validated in this section: ZN, BGZ

The Z score for a bond length (or angle) is the number of standard deviations the observed value is removed from the expected value. A bond length (or angle) with $|Z| > 5$ is considered an outlier worth inspection. RMSZ is the root-mean-square of all Z scores of the bond lengths (or angles).

Mol	Chain	Bond lengths		Bond angles	
		RMSZ	# Z >5	RMSZ	# Z >5
1	A	0.25	0/9453	0.46	1/12828 (0.0%)
2	B	0.24	0/551	0.36	0/744
3	C	0.24	0/6835	0.41	0/9256
4	D	0.24	0/709	0.43	0/952
All	All	0.25	0/17548	0.44	1/23780 (0.0%)

There are no bond length outliers.

All (1) bond angle outliers are listed below:

Mol	Chain	Res	Type	Atoms	Z	Observed(°)	Ideal(°)
1	A	679	LEU	CA-CB-CG	5.67	128.34	115.30

There are no chirality outliers.

There are no planarity outliers.

5.2 Too-close contacts [i](#)

In the following table, the Non-H and H(model) columns list the number of non-hydrogen atoms and hydrogen atoms in the chain respectively. The H(added) column lists the number of hydrogen atoms added and optimized by MolProbity. The Clashes column lists the number of clashes within the asymmetric unit, whereas Symm-Clashes lists symmetry related clashes.

Mol	Chain	Non-H	H(model)	H(added)	Clashes	Symm-Clashes
1	A	9263	0	9179	179	0
2	B	535	0	504	11	0
3	C	6707	0	6915	153	0
4	D	700	0	683	12	0
5	D	3	0	0	0	0
6	D	38	0	0	0	0

Continued on next page...

Continued from previous page...

Mol	Chain	Non-H	H(model)	H(added)	Clashes	Symm-Clashes
All	All	17246	0	17281	342	0

The all-atom clashscore is defined as the number of clashes found per 1000 atoms (including hydrogen atoms). The all-atom clashscore for this structure is 10.

All (342) close contacts within the same asymmetric unit are listed below, sorted by their clash magnitude.

Atom-1	Atom-2	Interatomic distance (Å)	Clash overlap (Å)
1:A:910:ALA:HB2	1:A:948:VAL:HG23	1.48	0.94
3:C:1289:ASN:HB3	3:C:1295:TYR:H	1.36	0.90
3:C:1173:LEU:O	3:C:1177:LEU:HB2	1.72	0.89
3:C:866:LYS:HG3	3:C:909:VAL:HG11	1.65	0.77
3:C:665:ILE:HG23	3:C:690:ILE:HD11	1.68	0.76
3:C:1205:GLU:O	3:C:1209:ASN:HB2	1.86	0.76
1:A:428:GLY:HA3	1:A:433:SER:HA	1.68	0.75
1:A:910:ALA:HB2	1:A:948:VAL:CG2	2.17	0.74
1:A:1011:TRP:HB2	1:A:1025:ALA:HB3	1.69	0.74
1:A:812:LYS:NZ	1:A:849:GLU:OE1	2.20	0.74
3:C:551:LEU:HD11	4:D:95:LYS:HD2	1.71	0.72
4:D:31:VAL:HA	4:D:60:ILE:HD11	1.73	0.71
3:C:553:VAL:HG21	3:C:592:GLU:HB3	1.72	0.70
1:A:951:ALA:HB1	1:A:993:ILE:HG22	1.73	0.70
3:C:1017:LEU:HD22	3:C:1050:VAL:HG11	1.74	0.69
1:A:895:ARG:NH2	1:A:901:GLU:OE1	2.25	0.69
1:A:797:LEU:HG	1:A:871:PRO:HG3	1.74	0.69
3:C:831:ARG:NH2	3:C:870:GLU:OE1	2.23	0.69
3:C:1173:LEU:O	3:C:1177:LEU:CB	2.39	0.69
1:A:454:GLY:O	1:A:760:ASN:ND2	2.26	0.69
1:A:1048:ASP:HB3	1:A:1052:ASN:H	1.56	0.69
3:C:503:LYS:HE3	3:C:515:ALA:HB2	1.75	0.68
3:C:672:ALA:HA	3:C:679:ILE:HD11	1.75	0.68
3:C:941:ASN:OD1	3:C:981:TYR:OH	2.11	0.68
1:A:1013:ARG:HH21	1:A:1064:ASP:HB2	1.60	0.67
3:C:793:LYS:HE3	3:C:839:GLU:HG3	1.76	0.67
1:A:236:ILE:HB	1:A:249:LEU:HB2	1.76	0.67
3:C:477:LYS:O	3:C:495:ARG:NH2	2.28	0.67
1:A:804:HIS:ND1	1:A:805:ASN:OD1	2.27	0.67
1:A:842:PHE:HD2	1:A:843:LEU:HD22	1.59	0.66
1:A:545:VAL:HG12	1:A:546:LYS:HG2	1.78	0.66
1:A:423:LEU:HB2	1:A:438:LEU:HB2	1.78	0.65
1:A:1103:THR:HG22	1:A:1107:GLY:H	1.60	0.65

Continued on next page...

Continued from previous page...

Atom-1	Atom-2	Interatomic distance (Å)	Clash overlap (Å)
1:A:672:GLY:HA3	1:A:695:GLY:HA2	1.79	0.64
1:A:613:THR:HG22	1:A:632:ALA:HA	1.80	0.64
1:A:745:PHE:HB2	1:A:755:VAL:HG23	1.79	0.64
3:C:854:VAL:HG11	3:C:891:GLN:HB3	1.79	0.64
1:A:239:PRO:HB3	1:A:294:LYS:HE2	1.77	0.64
1:A:550:ASN:OD1	1:A:551:GLN:N	2.30	0.64
1:A:633:LEU:HD12	1:A:637:PRO:HG3	1.80	0.64
1:A:893:VAL:HG22	1:A:905:VAL:HG22	1.81	0.62
1:A:712:VAL:HG23	1:A:722:SER:HB3	1.81	0.62
1:A:139:LYS:NZ	1:A:211:TYR:OH	2.33	0.62
1:A:918:ARG:NH2	1:A:947:GLU:OE2	2.33	0.62
1:A:1170:ASN:O	1:A:1174:ASN:ND2	2.33	0.62
1:A:1103:THR:HG23	1:A:1105:SER:H	1.64	0.62
1:A:283:ARG:NH2	2:B:59:GLU:OE1	2.33	0.62
3:C:1208:LEU:HB2	3:C:1241:ILE:HD11	1.81	0.62
1:A:1009:PHE:HZ	1:A:1046:GLY:HA3	1.64	0.61
3:C:1055:TRP:CD1	3:C:1088:ILE:HD11	2.35	0.61
3:C:568:ARG:NH1	3:C:608:THR:OG1	2.33	0.61
3:C:1036:ILE:HD11	3:C:1065:LEU:HD13	1.83	0.60
1:A:412:ILE:HG12	1:A:423:LEU:HG	1.82	0.60
3:C:900:PHE:O	3:C:939:ARG:NH2	2.34	0.60
1:A:983:ASN:ND2	1:A:1021:LEU:O	2.35	0.60
3:C:807:LYS:HE2	3:C:848:GLU:HG2	1.84	0.60
1:A:459:VAL:HA	1:A:475:ILE:O	2.02	0.59
1:A:868:VAL:O	1:A:877:LEU:N	2.34	0.59
1:A:1053:ILE:HD11	1:A:1083:VAL:HG21	1.85	0.58
1:A:542:LYS:NZ	1:A:562:GLU:OE1	2.32	0.58
1:A:676:ARG:NH1	1:A:1203:ASP:OD2	2.37	0.58
1:A:786:ARG:NH1	1:A:802:THR:O	2.36	0.58
2:B:32:LEU:HA	2:B:35:GLN:HG2	1.85	0.57
3:C:520:THR:HG21	3:C:558:ARG:HE	1.69	0.57
3:C:1177:LEU:HD23	3:C:1214:TYR:HB3	1.87	0.57
3:C:536:LEU:HD11	3:C:574:ILE:HD13	1.85	0.57
3:C:948:ARG:HH12	3:C:984:GLU:CD	2.07	0.57
1:A:514:ASP:N	1:A:514:ASP:OD1	2.36	0.57
3:C:821:HIS:NE2	3:C:859:ASP:OD2	2.37	0.57
1:A:481:ALA:HA	1:A:502:THR:O	2.04	0.57
3:C:1040:GLY:HA3	3:C:1080:THR:HG22	1.86	0.56
1:A:260:ASN:HB3	1:A:264:GLN:HG2	1.86	0.56
1:A:499:PHE:HD1	1:A:527:ILE:HD13	1.69	0.56
1:A:18:ILE:HD12	1:A:67:ALA:HB2	1.88	0.56

Continued on next page...

Continued from previous page...

Atom-1	Atom-2	Interatomic distance (Å)	Clash overlap (Å)
1:A:61:VAL:HB	1:A:83:ASP:HB3	1.86	0.56
2:B:29:TRP:NE1	2:B:77:GLY:O	2.37	0.56
1:A:981:CYS:SG	1:A:982:GLU:N	2.79	0.56
1:A:996:ILE:HG13	1:A:997:GLY:H	1.70	0.56
4:D:12:ARG:HA	4:D:84:GLY:HA3	1.86	0.56
1:A:1012:VAL:HG22	1:A:1023:ILE:HG12	1.88	0.56
1:A:794:SER:OG	1:A:796:ASN:OD1	2.21	0.56
1:A:1006:GLN:HG3	1:A:1032:TRP:CZ2	2.40	0.56
1:A:458:ALA:HB3	1:A:477:SER:HB3	1.87	0.55
1:A:988:ASN:OD1	3:C:1286:ARG:NE	2.39	0.55
3:C:1170:THR:HG22	3:C:1211:LEU:HD11	1.88	0.55
1:A:958:ARG:NH2	1:A:1014:TYR:OH	2.39	0.55
3:C:1063:LEU:HD23	3:C:1111:CYS:HB3	1.88	0.55
3:C:1262:ARG:O	3:C:1266:TRP:HB2	2.07	0.55
1:A:407:ILE:HG23	1:A:425:VAL:HG13	1.88	0.54
3:C:1223:SER:HB2	3:C:1226:VAL:HG12	1.90	0.54
1:A:1086:LEU:HD23	1:A:1101:TYR:HB3	1.88	0.54
1:A:677:THR:HG23	1:A:686:LEU:HB3	1.89	0.54
3:C:531:LEU:HD23	3:C:559:ILE:HD12	1.89	0.54
3:C:621:ASP:HB3	3:C:624:VAL:HG22	1.90	0.54
1:A:168:TYR:HB2	1:A:185:LEU:HB2	1.90	0.54
1:A:392:LEU:HD12	1:A:395:LEU:HB2	1.90	0.54
3:C:1106:ARG:H	3:C:1109:ARG:HG2	1.72	0.54
3:C:1046:GLY:O	3:C:1048:GLU:N	2.41	0.53
3:C:1098:LEU:HD13	3:C:1135:GLU:CD	2.29	0.53
3:C:701:VAL:HA	3:C:704:ILE:HG22	1.89	0.53
1:A:820:ALA:HB2	1:A:843:LEU:HD21	1.89	0.53
3:C:1155:PHE:CG	3:C:1195:MET:HG2	2.44	0.53
1:A:267:ILE:HD12	1:A:322:VAL:HG13	1.91	0.53
3:C:584:ASP:O	3:C:590:ARG:NH2	2.40	0.53
1:A:722:SER:HA	1:A:730:HIS:O	2.09	0.53
1:A:810:ALA:O	1:A:814:GLN:HG3	2.09	0.53
3:C:919:ASN:HA	3:C:961:VAL:HG21	1.91	0.53
3:C:1017:LEU:HD21	3:C:1058:ILE:HD11	1.91	0.52
3:C:1205:GLU:O	3:C:1209:ASN:CB	2.57	0.52
2:B:32:LEU:HD11	3:C:1287:ILE:HD12	1.91	0.52
1:A:200:ALA:O	1:A:204:THR:OG1	2.23	0.52
3:C:944:SER:O	3:C:947:VAL:HG22	2.09	0.52
3:C:921:LEU:HD22	3:C:924:ARG:HE	1.74	0.52
1:A:891:VAL:HG23	1:A:907:VAL:HG22	1.90	0.52
1:A:635:ALA:HB3	1:A:669:LEU:HD23	1.91	0.52

Continued on next page...

Continued from previous page...

Atom-1	Atom-2	Interatomic distance (Å)	Clash overlap (Å)
3:C:1253:GLY:HA2	3:C:1256:HIS:HB2	1.92	0.52
1:A:336:ALA:HA	1:A:351:SER:HA	1.92	0.51
1:A:789:VAL:HG11	1:A:892:ALA:HA	1.92	0.51
1:A:899:THR:HG21	1:A:904:TYR:HE2	1.74	0.51
1:A:313:ILE:HG12	1:A:327:LEU:HG	1.92	0.51
1:A:530:ASP:HB3	1:A:532:ARG:HH21	1.75	0.51
1:A:680:ASP:HB3	1:A:681:PRO:CD	2.41	0.51
1:A:275:ARG:HG2	1:A:386:PHE:HB3	1.92	0.51
3:C:757:MET:HE3	3:C:762:ALA:HA	1.92	0.51
1:A:1100:VAL:HG22	1:A:1110:ILE:HG22	1.93	0.51
1:A:210:PHE:HB2	1:A:224:TYR:HB2	1.92	0.51
3:C:652:CYS:O	3:C:692:HIS:NE2	2.40	0.51
3:C:811:LEU:HD22	3:C:815:PHE:HE1	1.74	0.51
3:C:793:LYS:HB2	3:C:836:THR:HG23	1.92	0.51
1:A:118:GLY:HA2	1:A:132:ILE:HD11	1.91	0.51
1:A:796:ASN:HA	1:A:871:PRO:HD3	1.93	0.51
1:A:316:GLU:OE2	1:A:326:ARG:NH2	2.44	0.51
1:A:969:VAL:HB	1:A:981:CYS:HB3	1.92	0.51
3:C:1076:ALA:O	3:C:1080:THR:HG23	2.11	0.50
3:C:1106:ARG:N	3:C:1109:ARG:HG2	2.26	0.50
1:A:530:ASP:O	1:A:532:ARG:N	2.44	0.50
1:A:931:VAL:HG12	1:A:932:ASN:H	1.76	0.50
3:C:626:ASN:OD1	3:C:630:ARG:NH1	2.44	0.50
4:D:29:LYS:HG2	4:D:36:TYR:CZ	2.47	0.50
1:A:1051:GLY:HA2	1:A:1082:THR:HA	1.93	0.50
3:C:747:LEU:HD23	3:C:788:VAL:HG12	1.93	0.50
3:C:1156:GLU:HG2	4:D:37:VAL:HG21	1.93	0.50
1:A:742:ALA:HA	1:A:755:VAL:O	2.11	0.49
3:C:571:VAL:HG12	3:C:612:THR:HG21	1.93	0.49
1:A:257:THR:HG23	1:A:268:ARG:HG2	1.93	0.49
3:C:751:GLY:HA3	3:C:791:VAL:HG22	1.93	0.49
1:A:166:LEU:O	1:A:186:GLU:HA	2.12	0.49
1:A:965:LYS:O	1:A:986:ILE:HB	2.12	0.49
3:C:696:ASP:OD1	3:C:697:GLU:N	2.44	0.49
3:C:1071:LYS:HB2	4:D:27:ASP:HB3	1.94	0.49
3:C:1167:TYR:O	3:C:1170:THR:OG1	2.31	0.49
3:C:942:ASN:HB3	3:C:947:VAL:HG21	1.94	0.49
1:A:390:ARG:HE	1:A:393:LYS:HD2	1.78	0.49
1:A:528:ARG:NH1	1:A:572:GLY:O	2.45	0.49
3:C:1237:LEU:O	3:C:1241:ILE:HB	2.13	0.49
3:C:672:ALA:HA	3:C:679:ILE:CD1	2.41	0.49

Continued on next page...

Continued from previous page...

Atom-1	Atom-2	Interatomic distance (Å)	Clash overlap (Å)
1:A:1077:TYR:HB2	1:A:1155:VAL:HG21	1.95	0.49
4:D:49:CYS:HB3	4:D:87:LYS:HD3	1.93	0.49
1:A:1032:TRP:HB3	1:A:1049:LYS:HD3	1.95	0.48
3:C:731:LEU:HB3	3:C:750:ILE:HD11	1.94	0.48
3:C:735:ILE:HD12	3:C:747:LEU:HD12	1.96	0.48
1:A:896:PHE:HB2	1:A:899:THR:HG22	1.95	0.48
1:A:905:VAL:HB	1:A:928:TYR:HB2	1.94	0.48
1:A:12:THR:O	1:A:34:ARG:NH1	2.47	0.48
3:C:1289:ASN:OD1	3:C:1289:ASN:N	2.45	0.48
3:C:948:ARG:NH1	3:C:984:GLU:OE1	2.44	0.48
1:A:524:ILE:HD11	1:A:556:ILE:HD13	1.96	0.48
3:C:1131:ALA:O	3:C:1135:GLU:OE2	2.31	0.48
3:C:497:ILE:HD12	3:C:531:LEU:HD12	1.96	0.48
1:A:967:LEU:HD22	1:A:1002:VAL:HG21	1.96	0.47
3:C:936:VAL:O	3:C:940:LEU:HB2	2.14	0.47
1:A:916:ASN:HD21	2:B:71:LYS:HE2	1.79	0.47
3:C:698:GLN:HB3	3:C:701:VAL:HG12	1.97	0.47
1:A:500:LEU:HA	1:A:518:GLN:OE1	2.14	0.47
1:A:1129:HIS:NE2	1:A:1178:GLU:HG2	2.30	0.47
3:C:998:LYS:HA	3:C:1038:LEU:HD13	1.97	0.47
3:C:1125:PRO:O	3:C:1129:LEU:HB2	2.15	0.47
3:C:484:GLU:O	3:C:488:SER:HB2	2.15	0.47
3:C:774:ILE:HD12	3:C:813:PRO:HG2	1.97	0.47
1:A:720:TRP:HA	1:A:733:PRO:HA	1.96	0.47
3:C:665:ILE:HG12	3:C:690:ILE:HG13	1.97	0.47
1:A:185:LEU:HD21	1:A:235:LEU:HD11	1.97	0.46
3:C:1108:ASN:ND2	3:C:1108:ASN:O	2.48	0.46
1:A:213:LEU:HD22	1:A:215:LEU:HD12	1.97	0.46
1:A:996:ILE:HG23	1:A:998:HIS:H	1.79	0.46
1:A:404:LEU:HD21	1:A:438:LEU:HD11	1.96	0.46
1:A:1034:THR:HB	1:A:1084:LEU:HD23	1.97	0.46
1:A:897:SER:HB2	1:A:957:GLY:HA3	1.96	0.46
3:C:816:LYS:O	3:C:820:GLN:NE2	2.48	0.46
1:A:274:ARG:HG2	1:A:387:PHE:CZ	2.51	0.46
1:A:842:PHE:CD2	1:A:843:LEU:HD22	2.45	0.46
3:C:1131:ALA:O	3:C:1134:ASN:N	2.48	0.46
1:A:1011:TRP:NE1	1:A:1058:LEU:HD21	2.30	0.46
1:A:304:GLN:HA	1:A:309:ASP:O	2.15	0.46
3:C:1013:ILE:HA	3:C:1016:LEU:HB3	1.97	0.46
3:C:901:GLN:O	3:C:939:ARG:NH2	2.49	0.46
1:A:528:ARG:HD3	1:A:528:ARG:HA	1.72	0.46

Continued on next page...

Continued from previous page...

Atom-1	Atom-2	Interatomic distance (Å)	Clash overlap (Å)
3:C:617:ILE:HD11	3:C:632:PHE:CE2	2.51	0.46
3:C:1155:PHE:CD1	3:C:1195:MET:HG2	2.50	0.46
3:C:563:LEU:HD22	3:C:566:LEU:HD22	1.98	0.46
3:C:893:ILE:HD13	3:C:928:TYR:CZ	2.51	0.46
3:C:731:LEU:O	3:C:735:ILE:HG12	2.15	0.46
1:A:520:TYR:HB2	1:A:521:PRO:HD2	1.97	0.45
3:C:588:TYR:O	3:C:592:GLU:HG3	2.15	0.45
1:A:552:ARG:NH1	1:A:600:GLN:O	2.48	0.45
1:A:675:LEU:HD23	1:A:686:LEU:HD13	1.98	0.45
1:A:229:GLU:OE1	1:A:268:ARG:NH1	2.49	0.45
1:A:642:ILE:O	1:A:703:ARG:NH1	2.49	0.45
3:C:532:PHE:CG	3:C:574:ILE:HD11	2.52	0.45
3:C:663:THR:O	3:C:667:ILE:HG13	2.17	0.45
3:C:903:GLN:HB2	3:C:939:ARG:HH12	1.81	0.45
1:A:715:MET:SD	1:A:739:LEU:HB2	2.57	0.45
3:C:1010:THR:OG1	3:C:1011:PRO:HD3	2.17	0.45
3:C:1156:GLU:HB2	3:C:1194:HIS:CG	2.52	0.45
3:C:617:ILE:HG22	3:C:660:ALA:HA	1.99	0.45
3:C:624:VAL:HA	3:C:627:THR:HG22	1.99	0.45
3:C:750:ILE:HD12	3:C:765:TYR:HE1	1.81	0.45
1:A:499:PHE:H	1:A:500:LEU:HD22	1.82	0.45
1:A:79:VAL:HG12	1:A:121:LEU:HD21	1.98	0.45
3:C:501:LEU:HD21	3:C:535:ILE:HG12	1.99	0.45
3:C:735:ILE:HG21	3:C:769:VAL:HG13	1.98	0.45
1:A:1147:SER:OG	1:A:1152:VAL:HG23	2.16	0.44
1:A:286:ILE:HG12	1:A:306:GLU:OE2	2.17	0.44
1:A:583:MET:HE2	1:A:607:VAL:HG11	1.99	0.44
3:C:1135:GLU:OE2	3:C:1135:GLU:N	2.51	0.44
3:C:946:LYS:NZ	3:C:988:GLU:OE1	2.42	0.44
1:A:1043:THR:CG2	1:A:1057:ARG:HE	2.29	0.44
1:A:489:GLU:HG3	1:A:490:THR:HG23	1.99	0.44
1:A:499:PHE:N	1:A:500:LEU:HD22	2.32	0.44
3:C:1013:ILE:HB	3:C:1049:TYR:HD1	1.82	0.44
3:C:859:ASP:OD1	3:C:860:GLU:N	2.51	0.44
1:A:567:GLU:OE2	1:A:601:ARG:NH1	2.51	0.44
1:A:864:SER:HB3	1:A:882:LEU:HD12	2.00	0.44
1:A:912:ASP:HB2	1:A:921:ALA:HB3	1.98	0.44
1:A:415:LEU:HD23	1:A:871:PRO:HG2	2.00	0.44
1:A:380:GLU:O	1:A:383:ASP:N	2.50	0.44
1:A:8:LEU:HB3	1:A:774:PHE:HE2	1.82	0.44
1:A:983:ASN:HB2	1:A:1021:LEU:HB2	2.00	0.44

Continued on next page...

Continued from previous page...

Atom-1	Atom-2	Interatomic distance (Å)	Clash overlap (Å)
1:A:1081:GLU:OE1	1:A:1103:THR:HG21	2.18	0.43
3:C:1067:LYS:HB2	3:C:1111:CYS:SG	2.58	0.43
3:C:930:PRO:HA	3:C:970:LEU:HD21	1.99	0.43
1:A:482:THR:HG21	1:A:505:THR:OG1	2.18	0.43
1:A:804:HIS:HD1	1:A:805:ASN:CG	2.20	0.43
1:A:721:LEU:HG	1:A:723:TYR:HD1	1.83	0.43
1:A:866:ILE:HB	1:A:880:VAL:HB	1.99	0.43
1:A:274:ARG:HB2	1:A:277:ASP:OD1	2.17	0.43
1:A:82:SER:OG	1:A:83:ASP:N	2.51	0.43
1:A:804:HIS:HB3	2:B:58:ASN:H	1.84	0.43
3:C:641:ILE:N	3:C:642:PRO:HD2	2.33	0.43
1:A:71:THR:HG21	3:C:681:PRO:HD3	2.00	0.43
3:C:1141:LEU:O	3:C:1144:GLN:HB2	2.18	0.43
3:C:754:ILE:HG12	3:C:757:MET:HE1	2.01	0.43
1:A:928:TYR:CD2	1:A:937:LEU:HB3	2.54	0.43
3:C:484:GLU:H	3:C:484:GLU:HG2	1.56	0.43
1:A:536:TRP:CH2	1:A:539:PRO:HD3	2.54	0.43
1:A:899:THR:HG21	1:A:904:TYR:CE2	2.54	0.43
1:A:470:PHE:HB3	1:A:747:SER:HA	2.00	0.43
1:A:499:PHE:CD1	1:A:527:ILE:HD13	2.53	0.43
1:A:929:LYS:HB2	1:A:938:GLU:HB2	2.00	0.43
3:C:1182:LEU:HA	3:C:1182:LEU:HD12	1.85	0.43
1:A:487:ILE:HA	1:A:491:VAL:HG12	2.01	0.42
1:A:280:ASP:HB2	1:A:857:ALA:HB1	2.00	0.42
1:A:79:VAL:HG22	1:A:89:ILE:HG12	2.02	0.42
3:C:524:ARG:HH11	3:C:563:LEU:HA	1.84	0.42
3:C:614:ARG:N	3:C:615:PRO:HD2	2.33	0.42
1:A:528:ARG:HB3	1:A:532:ARG:HG2	2.00	0.42
1:A:677:THR:HG21	1:A:683:THR:HG23	2.02	0.42
2:B:32:LEU:HD21	3:C:1287:ILE:HB	2.02	0.42
4:D:71:TYR:OH	4:D:86:PRO:HG3	2.19	0.42
1:A:274:ARG:HD2	1:A:389:PRO:HG3	2.01	0.42
2:B:28:LYS:HE3	3:C:1287:ILE:HG21	2.01	0.42
3:C:1004:ILE:HD12	3:C:1004:ILE:HA	1.94	0.42
1:A:105:GLU:OE1	4:D:44:ARG:NH1	2.53	0.42
3:C:464:LEU:HD21	3:C:478:LEU:HB3	2.00	0.42
3:C:499:LYS:O	3:C:503:LYS:N	2.51	0.42
1:A:1085:SER:O	1:A:1101:TYR:HA	2.19	0.42
1:A:253:GLU:HA	1:A:286:ILE:HG22	2.00	0.42
1:A:886:GLU:HB3	1:A:909:VAL:HG11	2.02	0.42
3:C:1148:LEU:HD23	3:C:1148:LEU:HA	1.90	0.42

Continued on next page...

Continued from previous page...

Atom-1	Atom-2	Interatomic distance (Å)	Clash overlap (Å)
1:A:441:GLY:O	1:A:772:ALA:HA	2.20	0.42
3:C:1114:VAL:HA	3:C:1153:PHE:CE2	2.55	0.42
3:C:609:MET:HE2	3:C:635:VAL:HG11	2.02	0.42
3:C:812:PRO:HB2	3:C:813:PRO:HD3	2.00	0.42
3:C:906:GLU:HG2	3:C:946:LYS:HB3	2.02	0.42
3:C:929:LEU:HD12	3:C:967:GLU:HG3	2.02	0.42
4:D:6:PRO:HB2	4:D:7:ASP:H	1.67	0.42
3:C:1036:ILE:O	3:C:1080:THR:HG21	2.20	0.42
3:C:490:GLU:O	3:C:491:GLU:HG2	2.20	0.42
1:A:456:PRO:HG3	1:A:478:PHE:CE2	2.55	0.41
3:C:1299:GLU:HA	3:C:1302:TYR:CZ	2.55	0.41
1:A:716:SER:OG	1:A:717:SER:N	2.53	0.41
1:A:418:GLU:OE1	1:A:718:ARG:HD3	2.20	0.41
3:C:661:ARG:NH1	3:C:696:ASP:OD2	2.54	0.41
1:A:437:VAL:O	1:A:776:GLN:HA	2.19	0.41
3:C:1187:THR:O	3:C:1191:VAL:HG23	2.20	0.41
3:C:970:LEU:HA	3:C:970:LEU:HD12	1.89	0.41
1:A:133:SER:CB	1:A:139:LYS:HG2	2.50	0.41
3:C:1118:ILE:O	3:C:1122:THR:HG22	2.21	0.41
3:C:1185:ARG:HD2	3:C:1218:ASN:OD1	2.21	0.41
3:C:989:VAL:O	3:C:993:ILE:HG12	2.19	0.41
1:A:258:TYR:CE1	1:A:260:ASN:HB2	2.56	0.41
1:A:851:ILE:HG23	1:A:852:PHE:CD2	2.56	0.41
1:A:858:GLY:HA3	1:A:861:GLN:HG2	2.02	0.41
3:C:1170:THR:HG1	3:C:1170:THR:H	1.60	0.41
1:A:336:ALA:HB2	1:A:349:VAL:HG13	2.03	0.41
1:A:721:LEU:HG	1:A:723:TYR:CD1	2.56	0.41
4:D:30:CYS:HB2	4:D:72:CYS:HB3	2.02	0.41
1:A:418:GLU:HA	1:A:717:SER:HB2	2.03	0.41
3:C:937:LEU:HD23	3:C:937:LEU:HA	1.85	0.41
1:A:801:GLU:O	1:A:864:SER:HA	2.21	0.41
3:C:786:LYS:NZ	3:C:828:ARG:HE	2.19	0.41
1:A:1101:TYR:CZ	1:A:1109:GLY:HA3	2.56	0.41
3:C:1254:LEU:HD23	3:C:1254:LEU:HA	1.94	0.41
3:C:746:PHE:O	3:C:750:ILE:HG12	2.20	0.41
3:C:786:LYS:HZ3	3:C:828:ARG:HE	1.68	0.41
1:A:1055:VAL:HB	1:A:1075:MET:HB3	2.03	0.41
3:C:664:GLY:HA2	3:C:667:ILE:HD12	2.02	0.41
4:D:59:VAL:HG13	4:D:87:LYS:HA	2.02	0.41
1:A:258:TYR:CD2	1:A:322:VAL:HG11	2.56	0.41
1:A:913:LEU:HD22	1:A:913:LEU:HA	1.91	0.41

Continued on next page...

Continued from previous page...

Atom-1	Atom-2	Interatomic distance (Å)	Clash overlap (Å)
3:C:1013:ILE:HG23	3:C:1042:ILE:HD13	2.02	0.41
3:C:1081:PHE:HA	3:C:1084:ILE:HD11	2.03	0.41
3:C:482:VAL:HB	3:C:487:LEU:HD12	2.03	0.41
3:C:912:ASN:O	3:C:916:THR:OG1	2.34	0.41
1:A:528:ARG:HB3	1:A:530:ASP:O	2.21	0.40
1:A:1043:THR:HG22	1:A:1057:ARG:HE	1.86	0.40
1:A:499:PHE:CZ	1:A:531:LYS:HG3	2.57	0.40
2:B:49:LEU:HA	2:B:49:LEU:HD12	1.96	0.40
2:B:57:GLU:O	2:B:59:GLU:N	2.55	0.40
3:C:1206:ASP:OD1	3:C:1207:SER:N	2.51	0.40
3:C:850:ILE:O	3:C:854:VAL:HG23	2.21	0.40
1:A:404:LEU:HB3	1:A:407:ILE:HD11	2.03	0.40
1:A:506:LEU:N	1:A:519:VAL:O	2.43	0.40
2:B:22:GLY:HA3	3:C:1266:TRP:CZ3	2.56	0.40
3:C:1048:GLU:CD	3:C:1048:GLU:H	2.24	0.40
3:C:1056:MET:CE	3:C:1093:VAL:HA	2.51	0.40
3:C:1006:MET:SD	3:C:1013:ILE:HD11	2.61	0.40
3:C:1181:ASP:O	3:C:1184:HIS:HB2	2.21	0.40
3:C:568:ARG:HA	3:C:571:VAL:HG23	2.02	0.40
1:A:870:ASN:HB3	1:A:875:ASN:OD1	2.21	0.40
1:A:866:ILE:HD13	1:A:907:VAL:HG21	2.03	0.40
3:C:1177:LEU:HD21	3:C:1215:VAL:HG22	2.02	0.40

There are no symmetry-related clashes.

5.3 Torsion angles [i](#)

5.3.1 Protein backbone [i](#)

In the following table, the Percentiles column shows the percent Ramachandran outliers of the chain as a percentile score with respect to all X-ray entries followed by that with respect to entries of similar resolution.

The Analysed column shows the number of residues for which the backbone conformation was analysed, and the total number of residues.

Mol	Chain	Analysed	Favoured	Allowed	Outliers	Percentiles
1	A	1170/1209 (97%)	1090 (93%)	78 (7%)	2 (0%)	47 77
2	B	63/85 (74%)	58 (92%)	5 (8%)	0	100 100
3	C	840/852 (99%)	815 (97%)	24 (3%)	1 (0%)	51 82

Continued on next page...

Continued from previous page...

Mol	Chain	Analysed	Favoured	Allowed	Outliers	Percentiles	
4	D	91/108 (84%)	83 (91%)	8 (9%)	0	100	100
All	All	2164/2254 (96%)	2046 (94%)	115 (5%)	3 (0%)	51	82

All (3) Ramachandran outliers are listed below:

Mol	Chain	Res	Type
1	A	680	ASP
3	C	1047	ALA
1	A	531	LYS

5.3.2 Protein sidechains [i](#)

In the following table, the Percentiles column shows the percent sidechain outliers of the chain as a percentile score with respect to all X-ray entries followed by that with respect to entries of similar resolution.

The Analysed column shows the number of residues for which the sidechain conformation was analysed, and the total number of residues.

Mol	Chain	Analysed	Rotameric	Outliers	Percentiles	
1	A	1025/1048 (98%)	1013 (99%)	12 (1%)	71	87
2	B	57/76 (75%)	56 (98%)	1 (2%)	59	80
3	C	728/737 (99%)	717 (98%)	11 (2%)	65	84
4	D	80/90 (89%)	80 (100%)	0	100	100
All	All	1890/1951 (97%)	1866 (99%)	24 (1%)	69	86

All (24) residues with a non-rotameric sidechain are listed below:

Mol	Chain	Res	Type
1	A	258	TYR
1	A	277	ASP
1	A	510	LEU
1	A	679	LEU
1	A	685	ASP
1	A	795	ASN
1	A	815	ARG
1	A	838	MET
1	A	913	LEU
1	A	915	LEU
1	A	1069	GLN

Continued on next page...

Continued from previous page...

Mol	Chain	Res	Type
1	A	1148	TYR
2	B	66	PHE
3	C	490	GLU
3	C	493	LYS
3	C	939	ARG
3	C	943	LYS
3	C	1053	ARG
3	C	1108	ASN
3	C	1109	ARG
3	C	1132	LEU
3	C	1133	MET
3	C	1140	GLU
3	C	1184	HIS

Some sidechains can be flipped to improve hydrogen bonding and reduce clashes. There are no such sidechains identified.

5.3.3 RNA [i](#)

There are no RNA molecules in this entry.

5.4 Non-standard residues in protein, DNA, RNA chains [i](#)

There are no non-standard protein/DNA/RNA residues in this entry.

5.5 Carbohydrates [i](#)

There are no carbohydrates in this entry.

5.6 Ligand geometry [i](#)

Of 4 ligands modelled in this entry, 3 are monoatomic - leaving 1 for Mogul analysis.

In the following table, the Counts columns list the number of bonds (or angles) for which Mogul statistics could be retrieved, the number of bonds (or angles) that are observed in the model and the number of bonds (or angles) that are defined in the Chemical Component Dictionary. The Link column lists molecule types, if any, to which the group is linked. The Z score for a bond length (or angle) is the number of standard deviations the observed value is removed from the expected value. A bond length (or angle) with $|Z| > 2$ is considered an outlier worth inspection. RMSZ is the root-mean-square of all Z scores of the bond lengths (or angles).

Mol	Type	Chain	Res	Link	Bond lengths			Bond angles		
					Counts	RMSZ	# Z > 2	Counts	RMSZ	# Z > 2
6	BGZ	D	104	-	37,39,39	0.16	0	46,55,55	0.42	1 (2%)

In the following table, the Chirals column lists the number of chiral outliers, the number of chiral centers analysed, the number of these observed in the model and the number defined in the Chemical Component Dictionary. Similar counts are reported in the Torsion and Rings columns. '-' means no outliers of that kind were identified.

Mol	Type	Chain	Res	Link	Chirals	Torsions	Rings
6	BGZ	D	104	-	-	3/57/62/62	0/1/2/2

There are no bond length outliers.

All (1) bond angle outliers are listed below:

Mol	Chain	Res	Type	Atoms	Z	Observed($^{\circ}$)	Ideal($^{\circ}$)
6	D	104	BGZ	C3-C2-C1	2.26	117.71	112.81

There are no chirality outliers.

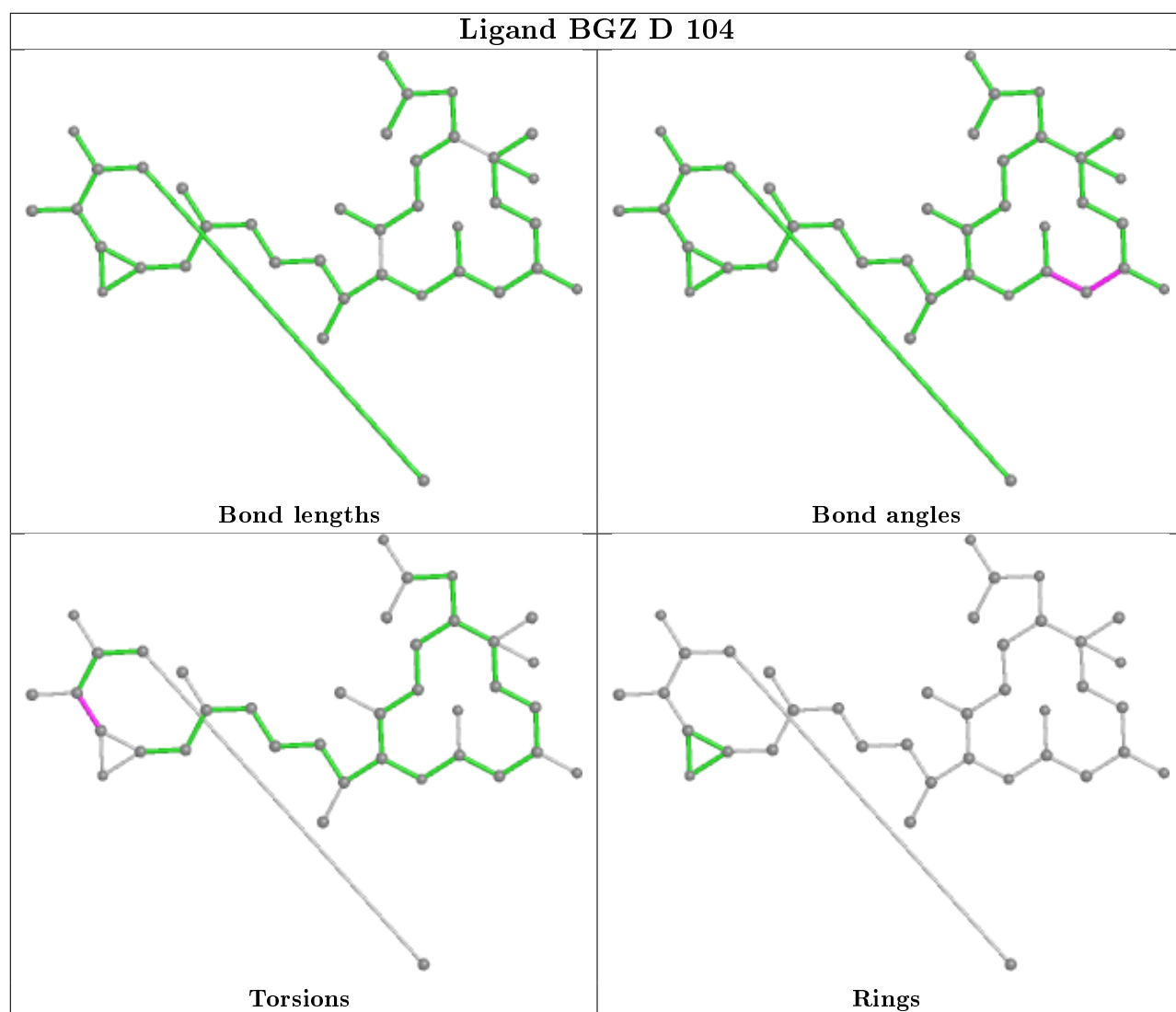
All (3) torsion outliers are listed below:

Mol	Chain	Res	Type	Atoms
6	D	104	BGZ	O7-C23-C24-C25
6	D	104	BGZ	C22-C23-C24-C25
6	D	104	BGZ	O7-C23-C24-C26

There are no ring outliers.

No monomer is involved in short contacts.

The following is a two-dimensional graphical depiction of Mogul quality analysis of bond lengths, bond angles, torsion angles, and ring geometry for all instances of the Ligand of Interest. In addition, ligands with molecular weight > 250 and outliers as shown on the validation Tables will also be included. For torsion angles, if less than 5% of the Mogul distribution of torsion angles is within 10 degrees of the torsion angle in question, then that torsion angle is considered an outlier. Any bond that is central to one or more torsion angles identified as an outlier by Mogul will be highlighted in the graph. For rings, the root-mean-square deviation (RMSD) between the ring in question and similar rings identified by Mogul is calculated over all ring torsion angles. If the average RMSD is greater than 60 degrees and the minimal RMSD between the ring in question and any Mogul-identified rings is also greater than 60 degrees, then that ring is considered an outlier. The outliers are highlighted in purple. The color gray indicates Mogul did not find sufficient equivalents in the CSD to analyse the geometry.



5.7 Other polymers [i](#)

There are no such residues in this entry.

5.8 Polymer linkage issues [i](#)

There are no chain breaks in this entry.

6 Fit of model and data [i](#)

6.1 Protein, DNA and RNA chains [i](#)

In the following table, the column labelled ‘#RSRZ> 2’ contains the number (and percentage) of RSRZ outliers, followed by percent RSRZ outliers for the chain as percentile scores relative to all X-ray entries and entries of similar resolution. The OWAB column contains the minimum, median, 95th percentile and maximum values of the occupancy-weighted average B-factor per residue. The column labelled ‘Q< 0.9’ lists the number of (and percentage) of residues with an average occupancy less than 0.9.

Mol	Chain	Analysed	<RSRZ>	#RSRZ>2	OWAB(Å ²)	Q<0.9
1	A	1180/1209 (97%)	-0.13	2 (0%) 95 89	61, 101, 144, 167	0
2	B	65/85 (76%)	-0.02	0 100 100	74, 96, 123, 128	0
3	C	842/852 (98%)	-0.22	1 (0%) 95 91	77, 108, 141, 166	0
4	D	93/108 (86%)	-0.39	0 100 100	67, 87, 129, 135	0
All	All	2180/2254 (96%)	-0.17	3 (0%) 95 91	61, 104, 142, 167	0

All (3) RSRZ outliers are listed below:

Mol	Chain	Res	Type	RSRZ
1	A	496	ASP	3.4
1	A	203	ASN	2.8
3	C	1106	ARG	2.3

6.2 Non-standard residues in protein, DNA, RNA chains [i](#)

There are no non-standard protein/DNA/RNA residues in this entry.

6.3 Carbohydrates [i](#)

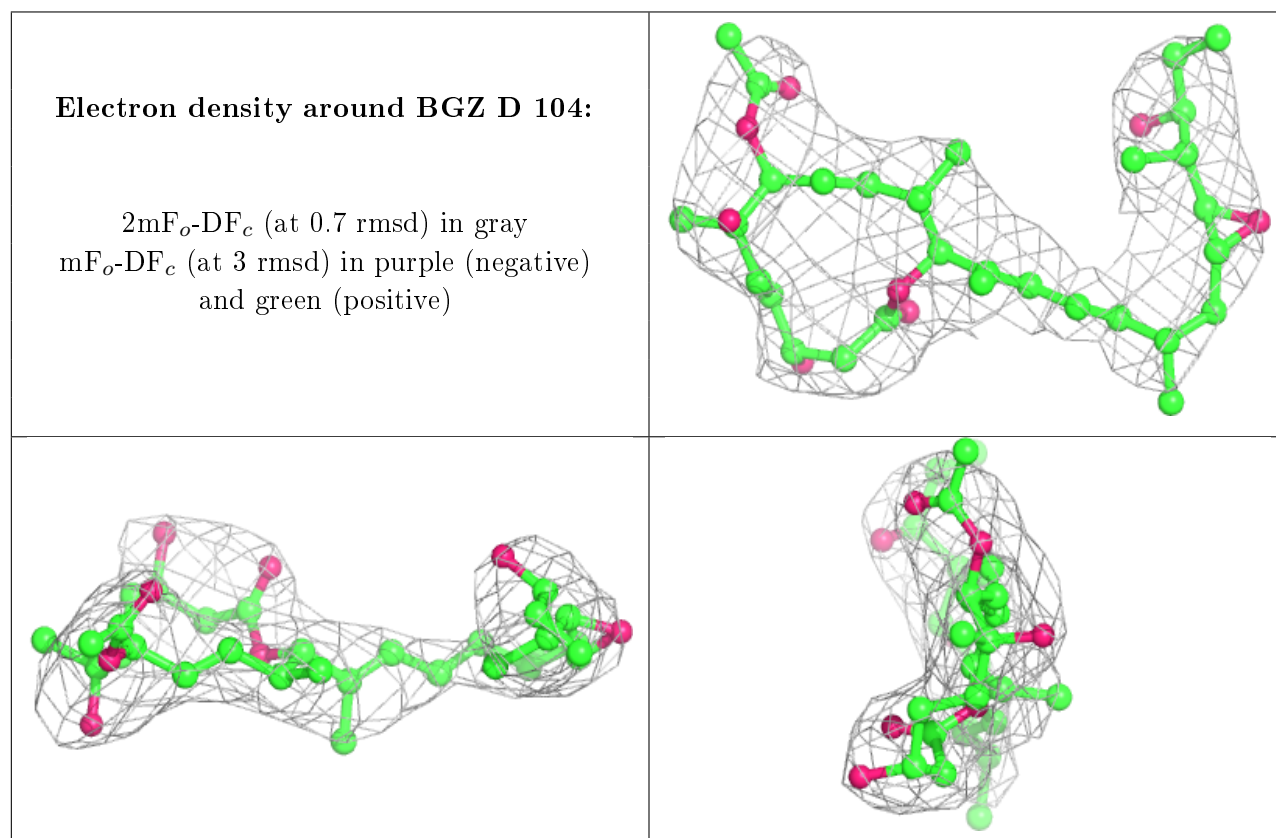
There are no carbohydrates in this entry.

6.4 Ligands [i](#)

In the following table, the Atoms column lists the number of modelled atoms in the group and the number defined in the chemical component dictionary. The B-factors column lists the minimum, median, 95th percentile and maximum values of B factors of atoms in the group. The column labelled ‘Q< 0.9’ lists the number of atoms with occupancy less than 0.9.

Mol	Type	Chain	Res	Atoms	RSCC	RSR	B-factors(\AA^2)	Q<0.9
6	BGZ	D	104	38/38	0.94	0.34	85,96,107,111	0
5	ZN	D	103	1/1	0.98	0.18	73,73,73,73	0
5	ZN	D	102	1/1	0.99	0.18	88,88,88,88	0
5	ZN	D	101	1/1	0.99	0.17	82,82,82,82	0

The following is a graphical depiction of the model fit to experimental electron density of all instances of the Ligand of Interest. In addition, ligands with molecular weight > 250 and outliers as shown on the geometry validation Tables will also be included. Each fit is shown from different orientation to approximate a three-dimensional view.



6.5 Other polymers [\(i\)](#)

There are no such residues in this entry.