



Full wwPDB X-ray Structure Validation Report ⓘ

Jun 16, 2024 – 07:36 AM EDT

PDB ID : 5EPO
Title : The three-dimensional structure of Clostridium absonum 7alpha-hydroxysteroid dehydrogenase
Authors : Lou, D.; Wang, B.; Wang, F.
Deposited on : 2015-11-12
Resolution : 2.00 Å(reported)

This is a Full wwPDB X-ray Structure Validation Report for a publicly released PDB entry.

We welcome your comments at validation@mail.wwpdb.org

A user guide is available at

<https://www.wwpdb.org/validation/2017/XrayValidationReportHelp>

with specific help available everywhere you see the ⓘ symbol.

The types of validation reports are described at

<http://www.wwpdb.org/validation/2017/FAQs#types>.

The following versions of software and data (see [references ⓘ](#)) were used in the production of this report:

MolProbity : 4.02b-467
Mogul : 1.8.5 (274361), CSD as541be (2020)
Xtriage (Phenix) : 1.13
EDS : 2.37.1
buster-report : 1.1.7 (2018)
Percentile statistics : 20191225.v01 (using entries in the PDB archive December 25th 2019)
Refmac : 5.8.0158
CCP4 : 7.0.044 (Gargrove)
Ideal geometry (proteins) : Engh & Huber (2001)
Ideal geometry (DNA, RNA) : Parkinson et al. (1996)
Validation Pipeline (wwPDB-VP) : 2.37.1

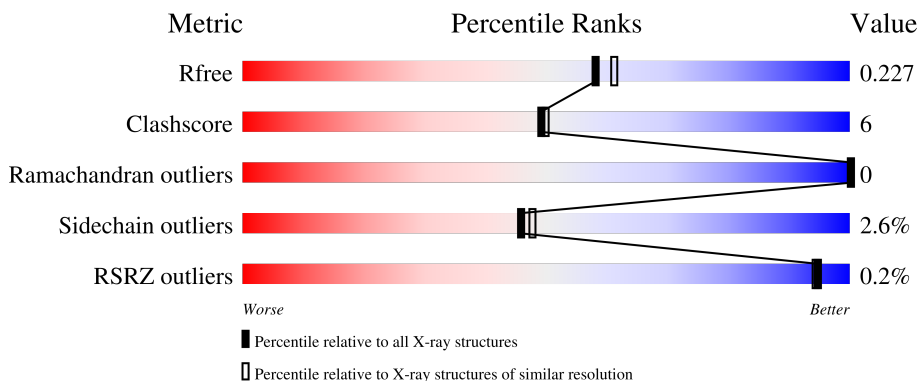
1 Overall quality at a glance

The following experimental techniques were used to determine the structure:

X-RAY DIFFRACTION

The reported resolution of this entry is 2.00 Å.

Percentile scores (ranging between 0-100) for global validation metrics of the entry are shown in the following graphic. The table shows the number of entries on which the scores are based.



Metric	Whole archive (#Entries)	Similar resolution (#Entries, resolution range(Å))
R_{free}	130704	8085 (2.00-2.00)
Clashscore	141614	9178 (2.00-2.00)
Ramachandran outliers	138981	9054 (2.00-2.00)
Sidechain outliers	138945	9053 (2.00-2.00)
RSRZ outliers	127900	7900 (2.00-2.00)

The table below summarises the geometric issues observed across the polymeric chains and their fit to the electron density. The red, orange, yellow and green segments of the lower bar indicate the fraction of residues that contain outliers for ≥ 3 , 2, 1 and 0 types of geometric quality criteria respectively. A grey segment represents the fraction of residues that are not modelled. The numeric value for each fraction is indicated below the corresponding segment, with a dot representing fractions $\leq 5\%$. The upper red bar (where present) indicates the fraction of residues that have poor fit to the electron density. The numeric value is given above the bar.

Mol	Chain	Length	Quality of chain
1	A	262	93% 6% .
1	B	262	90% 8% .
1	C	262	92% 5% ..
1	D	262	94% 5%

2 Entry composition [i](#)

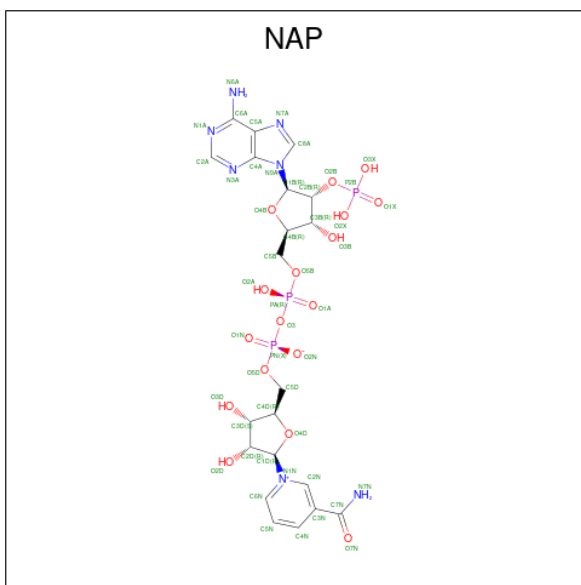
There are 5 unique types of molecules in this entry. The entry contains 9261 atoms, of which 0 are hydrogens and 0 are deuteriums.

In the tables below, the ZeroOcc column contains the number of atoms modelled with zero occupancy, the AltConf column contains the number of residues with at least one atom in alternate conformation and the Trace column contains the number of residues modelled with at most 2 atoms.

- Molecule 1 is a protein called 7-alpha-hydroxysteroid dehydrogenase.

Mol	Chain	Residues	Atoms					ZeroOcc	AltConf	Trace
			Total	C	N	O	S			
1	A	261	Total	C	N	O	S	0	0	0
			1979	1240	346	386	7			
1	B	261	Total	C	N	O	S	0	0	0
			1979	1240	346	386	7			
1	C	261	Total	C	N	O	S	0	0	0
			1980	1240	346	387	7			
1	D	261	Total	C	N	O	S	0	0	0
			1976	1239	343	386	8			

- Molecule 2 is NADP NICOTINAMIDE-ADENINE-DINUCLEOTIDE PHOSPHATE (three-letter code: NAP) (formula: $C_{21}H_{28}N_7O_{17}P_3$).



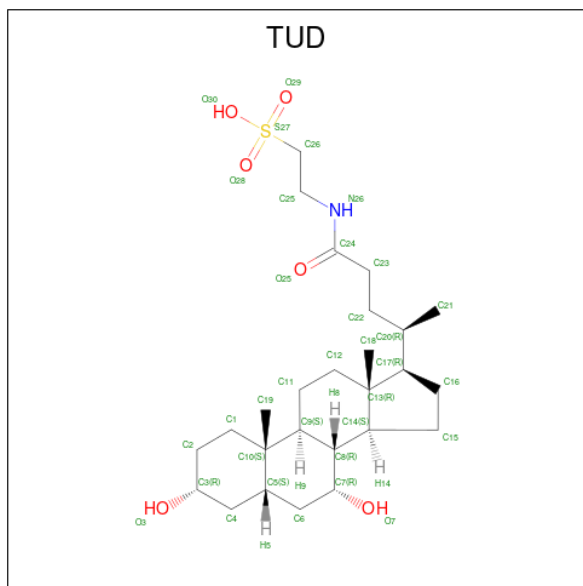
Mol	Chain	Residues	Atoms				ZeroOcc	AltConf	
			Total	C	N	O			P
2	A	1	Total	C	N	O	P	0	0
			48	21	7	17	3		
2	B	1	Total	C	N	O	P	0	0
			48	21	7	17	3		

Continued on next page...

Continued from previous page...

Mol	Chain	Residues	Atoms				ZeroOcc	AltConf	
2	C	1	Total	C	N	O	P	0	0
			48	21	7	17	3		
2	D	1	Total	C	N	O	P	0	0
			48	21	7	17	3		

- Molecule 3 is TAUROCHENODEOXYCHOLIC ACID (three-letter code: TUD) (formula: $C_{26}H_{45}NO_6S$).



Mol	Chain	Residues	Atoms				ZeroOcc	AltConf	
3	A	1	Total	C	N	O	S	0	0
			34	26	1	6	1		
3	B	1	Total	C	N	O	S	0	0
			34	26	1	6	1		
3	C	1	Total	C	N	O	S	0	0
			34	26	1	6	1		
3	D	1	Total	C	N	O	S	0	0
			34	26	1	6	1		

- Molecule 4 is GLYCEROL (three-letter code: GOL) (formula: $C_3H_8O_3$).



Mol	Chain	Residues	Atoms	ZeroOcc	AltConf
4	A	1	Total C O 6 3 3	0	0
4	B	1	Total C O 6 3 3	0	0
4	C	1	Total C O 6 3 3	0	0
4	D	1	Total C O 6 3 3	0	0

- Molecule 5 is water.

Mol	Chain	Residues	Atoms	ZeroOcc	AltConf
5	A	223	Total O 223 223	0	0
5	B	262	Total O 262 262	0	0
5	C	249	Total O 249 249	0	0
5	D	261	Total O 261 261	0	0

3 Residue-property plots [i](#)


These plots are drawn for all protein, RNA, DNA and oligosaccharide chains in the entry. The first graphic for a chain summarises the proportions of the various outlier classes displayed in the second graphic. The second graphic shows the sequence view annotated by issues in geometry and electron density. Residues are color-coded according to the number of geometric quality criteria for which they contain at least one outlier: green = 0, yellow = 1, orange = 2 and red = 3 or more. A red dot above a residue indicates a poor fit to the electron density ($RSRZ > 2$). Stretches of 2 or more consecutive residues without any outlier are shown as a green connector. Residues present in the sample, but not in the model, are shown in grey.

- Molecule 1: 7-alpha-hydroxysteroid dehydrogenase

Chain A:  93% 6% .



- Molecule 1: 7-alpha-hydroxysteroid dehydrogenase

Chain B:  90% 8% .



- Molecule 1: 7-alpha-hydroxysteroid dehydrogenase

Chain C:  92% 5% ..



- Molecule 1: 7-alpha-hydroxysteroid dehydrogenase

Chain D:  94% 5%



4 Data and refinement statistics

Property	Value	Source
Space group	P 21 21 21	Depositor
Cell constants a, b, c, α , β , γ	67.18Å 69.68Å 220.39Å 90.00° 90.00° 90.00°	Depositor
Resolution (Å)	49.58 – 2.00 49.58 – 2.00	Depositor EDS
% Data completeness (in resolution range)	98.2 (49.58-2.00) 98.3 (49.58-2.00)	Depositor EDS
R_{merge}	(Not available)	Depositor
R_{sym}	(Not available)	Depositor
$\langle I/\sigma(I) \rangle$ ¹	2.01 (at 2.00Å)	Xtrriage
Refinement program	REFMAC 5.8.0135	Depositor
R, R_{free}	0.182 , 0.222 0.189 , 0.227	Depositor DCC
R_{free} test set	3540 reflections (5.08%)	wwPDB-VP
Wilson B-factor (Å ²)	12.5	Xtrriage
Anisotropy	0.013	Xtrriage
Bulk solvent k_{sol} (e/Å ³), B_{sol} (Å ²)	0.35 , 46.9	EDS
L-test for twinning ²	$\langle L \rangle = 0.46$, $\langle L^2 \rangle = 0.29$	Xtrriage
Estimated twinning fraction	0.046 for k,h,-l	Xtrriage
F_o, F_c correlation	0.93	EDS
Total number of atoms	9261	wwPDB-VP
Average B, all atoms (Å ²)	15.0	wwPDB-VP

Xtrriage's analysis on translational NCS is as follows: *The largest off-origin peak in the Patterson function is 3.80% of the height of the origin peak. No significant pseudotranslation is detected.*

¹Intensities estimated from amplitudes.

²Theoretical values of $\langle |L| \rangle$, $\langle L^2 \rangle$ for acentric reflections are 0.5, 0.333 respectively for untwinned datasets, and 0.375, 0.2 for perfectly twinned datasets.

5 Model quality [i](#)

5.1 Standard geometry [i](#)

Bond lengths and bond angles in the following residue types are not validated in this section: TUD, GOL, NAP

The Z score for a bond length (or angle) is the number of standard deviations the observed value is removed from the expected value. A bond length (or angle) with $|Z| > 5$ is considered an outlier worth inspection. RMSZ is the root-mean-square of all Z scores of the bond lengths (or angles).

Mol	Chain	Bond lengths		Bond angles	
		RMSZ	# Z >5	RMSZ	# Z >5
1	A	0.66	0/2008	0.62	0/2718
1	B	0.68	0/2008	0.67	2/2718 (0.1%)
1	C	0.71	0/2009	0.70	3/2718 (0.1%)
1	D	0.68	0/2005	0.61	0/2714
All	All	0.68	0/8030	0.65	5/10868 (0.0%)

There are no bond length outliers.

All (5) bond angle outliers are listed below:

Mol	Chain	Res	Type	Atoms	Z	Observed(°)	Ideal(°)
1	B	3	ARG	NE-CZ-NH1	7.41	124.00	120.30
1	B	3	ARG	NE-CZ-NH2	-5.78	117.41	120.30
1	C	65	ARG	NE-CZ-NH2	-5.36	117.62	120.30
1	C	2	LYS	N-CA-C	5.33	125.39	111.00
1	C	65	ARG	NE-CZ-NH1	5.28	122.94	120.30

There are no chirality outliers.

There are no planarity outliers.

5.2 Too-close contacts [i](#)

In the following table, the Non-H and H(model) columns list the number of non-hydrogen atoms and hydrogen atoms in the chain respectively. The H(added) column lists the number of hydrogen atoms added and optimized by MolProbity. The Clashes column lists the number of clashes within the asymmetric unit, whereas Symm-Clashes lists symmetry-related clashes.

Mol	Chain	Non-H	H(model)	H(added)	Clashes	Symm-Clashes
1	A	1979	0	1980	21	1
1	B	1979	0	1980	24	0

Continued on next page...

Continued from previous page...

Mol	Chain	Non-H	H(model)	H(added)	Clashes	Symm-Clashes
1	C	1980	0	1980	18	0
1	D	1976	0	1979	15	0
2	A	48	0	23	14	0
2	B	48	0	24	18	0
2	C	48	0	24	4	0
2	D	48	0	25	13	0
3	A	34	0	45	5	0
3	B	34	0	45	4	0
3	C	34	0	45	2	0
3	D	34	0	45	11	0
4	A	6	0	8	0	0
4	B	6	0	8	0	0
4	C	6	0	8	0	0
4	D	6	0	8	0	0
5	A	223	0	0	2	0
5	B	262	0	0	7	1
5	C	249	0	0	8	3
5	D	261	0	0	5	3
All	All	9261	0	8227	97	4

The all-atom clashscore is defined as the number of clashes found per 1000 atoms (including hydrogen atoms). The all-atom clashscore for this structure is 6.

All (97) close contacts within the same asymmetric unit are listed below, sorted by their clash magnitude.

Atom-1	Atom-2	Interatomic distance (Å)	Clash overlap (Å)
1:C:83:ARG:HD3	5:C:566:HOH:O	1.47	1.13
1:B:97:ASN:HB3	5:B:523:HOH:O	1.56	1.04
2:D:301:NAP:C5N	3:D:302:TUD:H162	1.99	0.93
1:C:262:ARG:HD2	5:C:597:HOH:O	1.72	0.89
1:D:1:MET:HE2	1:D:5:GLU:HG2	1.52	0.88
2:C:301:NAP:C4N	3:C:302:TUD:H7	2.04	0.87
1:C:45:GLU:OE2	5:C:401:HOH:O	1.92	0.87
1:B:188:PRO:HB2	2:B:301:NAP:H5N	1.56	0.86
1:B:188:PRO:CB	2:B:301:NAP:H5N	2.06	0.85
1:D:7:LYS:HE3	5:D:518:HOH:O	1.79	0.82
1:A:188:PRO:CB	2:A:301:NAP:H5N	2.10	0.81
1:C:206:ASP:HB3	5:C:533:HOH:O	1.80	0.80
1:A:188:PRO:HB2	2:A:301:NAP:H5N	1.66	0.78
2:D:301:NAP:C3N	3:D:302:TUD:H152	2.16	0.76
1:D:195:ALA:HB3	2:D:301:NAP:H5N	1.68	0.76

Continued on next page...

Continued from previous page...

Atom-1	Atom-2	Interatomic distance (Å)	Clash overlap (Å)
1:B:16:ARG:NH1	2:B:301:NAP:O2X	2.24	0.71
1:D:195:ALA:CB	2:D:301:NAP:H5N	2.21	0.71
1:A:233:ASP:OD2	5:A:401:HOH:O	2.08	0.70
1:B:188:PRO:HG2	2:B:301:NAP:H6N	1.76	0.66
2:D:301:NAP:C5N	3:D:302:TUD:C16	2.73	0.66
1:B:193:THR:OG1	2:B:301:NAP:N7N	2.29	0.65
1:A:73:MET:HE2	1:A:74:VAL:N	2.12	0.65
1:C:24:GLU:OE2	5:C:402:HOH:O	2.13	0.65
1:B:144:SER:O	1:B:188:PRO:HD2	1.97	0.64
1:C:68:GLU:HB2	5:C:548:HOH:O	1.96	0.64
1:A:188:PRO:HB2	2:A:301:NAP:C5N	2.29	0.63
2:D:301:NAP:C4N	3:D:302:TUD:H152	2.29	0.62
2:D:301:NAP:C6N	3:D:302:TUD:C16	2.78	0.61
1:B:188:PRO:HB2	2:B:301:NAP:C5N	2.30	0.60
1:C:65:ARG:NH2	1:C:91:TYR:OH	2.34	0.60
2:A:301:NAP:H2N	3:A:302:TUD:C15	2.32	0.60
1:D:1:MET:HE2	1:D:5:GLU:CG	2.29	0.60
2:B:301:NAP:C2N	3:B:302:TUD:C15	2.79	0.60
1:B:71:THR:HG23	5:B:466:HOH:O	2.02	0.59
1:A:102:LEU:HD23	1:C:129:ILE:HD12	1.83	0.59
2:A:301:NAP:C2N	3:A:302:TUD:C15	2.81	0.57
1:D:195:ALA:HB3	2:D:301:NAP:C5N	2.34	0.57
1:B:71:THR:HG22	5:B:471:HOH:O	2.03	0.57
1:A:191:ILE:HG12	2:A:301:NAP:H4N	1.87	0.56
1:A:191:ILE:CG1	2:A:301:NAP:H4N	2.36	0.55
2:B:301:NAP:C2N	3:B:302:TUD:H152	2.37	0.55
1:C:188:PRO:HB2	2:C:301:NAP:C5N	2.37	0.54
1:C:2:LYS:NZ	1:C:2:LYS:HB3	2.23	0.53
1:A:18:ILE:CD1	2:A:301:NAP:C5N	2.86	0.53
2:B:301:NAP:H4N	5:B:401:HOH:O	2.02	0.53
2:D:301:NAP:H71N	3:D:302:TUD:H7	1.74	0.53
1:D:94:THR:O	3:D:302:TUD:H261	2.09	0.52
3:A:302:TUD:H121	3:A:302:TUD:H212	1.91	0.52
1:A:73:MET:HE2	1:A:73:MET:C	2.30	0.51
3:D:302:TUD:H212	3:D:302:TUD:H121	1.92	0.51
2:A:301:NAP:C2N	3:A:302:TUD:H152	2.41	0.51
1:C:189:GLY:O	2:C:301:NAP:H4N	2.11	0.51
1:A:18:ILE:HD11	2:A:301:NAP:C5N	2.41	0.50
2:A:301:NAP:C2N	3:A:302:TUD:H151	2.42	0.49
1:B:258:GLU:OE2	5:B:402:HOH:O	2.20	0.49
2:D:301:NAP:C6N	3:D:302:TUD:H162	2.41	0.49

Continued on next page...

Continued from previous page...

Atom-1	Atom-2	Interatomic distance (Å)	Clash overlap (Å)
1:B:8:VAL:HG23	1:B:83:ARG:HD2	1.94	0.49
1:A:188:PRO:HG2	2:A:301:NAP:H6N	1.94	0.49
1:C:145:THR:HA	1:C:188:PRO:HD2	1.94	0.49
1:B:18:ILE:HD11	2:B:301:NAP:C5N	2.42	0.48
1:B:18:ILE:CD1	2:B:301:NAP:C5N	2.91	0.48
1:C:2:LYS:NZ	1:C:2:LYS:CB	2.76	0.48
1:B:262:ARG:NH2	5:B:412:HOH:O	2.45	0.48
1:C:49:ASP:HB2	5:C:408:HOH:O	2.13	0.48
3:C:302:TUD:H212	3:C:302:TUD:H121	1.94	0.48
1:D:65:ARG:HG2	5:D:573:HOH:O	2.12	0.48
1:B:69:THR:O	1:B:73:MET:HB3	2.14	0.48
1:A:102:LEU:HD23	1:C:129:ILE:CD1	2.44	0.47
1:B:102:LEU:HD12	1:D:122:TYR:CE2	2.50	0.47
1:B:188:PRO:HG2	2:B:301:NAP:C6N	2.41	0.46
1:A:69:THR:O	1:A:73:MET:HG2	2.15	0.46
1:B:129:ILE:HD12	1:D:102:LEU:HD23	1.97	0.46
1:D:2:LYS:HG2	5:D:535:HOH:O	2.15	0.46
1:B:191:ILE:HG12	2:B:301:NAP:H4N	1.97	0.46
1:B:90:ASN:O	2:B:301:NAP:H4D	2.15	0.46
2:D:301:NAP:C6N	2:D:301:NAP:O5D	2.64	0.46
2:B:301:NAP:H2N	3:B:302:TUD:C15	2.46	0.45
1:D:1:MET:CE	1:D:5:GLU:HG2	2.37	0.45
1:A:210:GLY:HA2	1:A:262:ARG:HD3	1.99	0.45
1:A:129:ILE:HD12	1:C:102:LEU:HD23	1.98	0.45
2:B:301:NAP:C2N	3:B:302:TUD:H151	2.47	0.45
2:D:301:NAP:C2N	3:D:302:TUD:H152	2.47	0.45
1:B:83:ARG:HD3	1:B:85:ASP:OD2	2.17	0.44
1:C:100:LYS:O	1:C:156:ILE:HG22	2.17	0.44
1:A:76:LYS:HE2	5:A:424:HOH:O	2.16	0.44
1:A:146:ILE:HD12	1:A:146:ILE:HA	1.92	0.44
1:C:2:LYS:HB3	1:C:2:LYS:HZ3	1.82	0.44
1:B:102:LEU:HD23	1:D:129:ILE:HD12	2.00	0.43
1:A:90:ASN:O	2:A:301:NAP:H4D	2.18	0.43
1:D:7:LYS:CE	5:D:518:HOH:O	2.53	0.42
1:A:188:PRO:CG	2:A:301:NAP:H5N	2.49	0.42
2:D:301:NAP:C2N	3:D:302:TUD:C15	2.97	0.42
1:A:206:ASP:OD2	1:A:262:ARG:NH1	2.52	0.42
2:C:301:NAP:H8A	5:C:547:HOH:O	2.19	0.42
1:B:16:ARG:HG2	2:B:301:NAP:H3B	2.01	0.41
1:D:233:ASP:OD1	5:D:401:HOH:O	2.22	0.41
2:B:301:NAP:C4N	5:B:401:HOH:O	2.52	0.40

All (4) symmetry-related close contacts are listed below. The label for Atom-2 includes the symmetry operator and encoded unit-cell translations to be applied.

Atom-1	Atom-2	Interatomic distance (Å)	Clash overlap (Å)
1:A:262:ARG:C	5:B:410:HOH:O[4_455]	1.56	0.64
5:C:499:HOH:O	5:D:534:HOH:O[1_565]	2.04	0.16
5:C:403:HOH:O	5:D:445:HOH:O[1_565]	2.05	0.15
5:C:625:HOH:O	5:D:567:HOH:O[1_565]	2.17	0.03

5.3 Torsion angles [i](#)

5.3.1 Protein backbone [i](#)

In the following table, the Percentiles column shows the percent Ramachandran outliers of the chain as a percentile score with respect to all X-ray entries followed by that with respect to entries of similar resolution.

The Analysed column shows the number of residues for which the backbone conformation was analysed, and the total number of residues.

Mol	Chain	Analysed	Favoured	Allowed	Outliers	Percentiles	
1	A	259/262 (99%)	252 (97%)	7 (3%)	0	100	100
1	B	259/262 (99%)	256 (99%)	3 (1%)	0	100	100
1	C	259/262 (99%)	254 (98%)	5 (2%)	0	100	100
1	D	259/262 (99%)	253 (98%)	6 (2%)	0	100	100
All	All	1036/1048 (99%)	1015 (98%)	21 (2%)	0	100	100

There are no Ramachandran outliers to report.

5.3.2 Protein sidechains [i](#)

In the following table, the Percentiles column shows the percent sidechain outliers of the chain as a percentile score with respect to all X-ray entries followed by that with respect to entries of similar resolution.

The Analysed column shows the number of residues for which the sidechain conformation was analysed, and the total number of residues.

Mol	Chain	Analysed	Rotameric	Outliers	Percentiles	
1	A	208/209 (100%)	204 (98%)	4 (2%)	57	61
1	B	208/209 (100%)	200 (96%)	8 (4%)	33	31

Continued on next page...

Continued from previous page...

Mol	Chain	Analysed	Rotameric	Outliers	Percentiles	
1	C	208/209 (100%)	201 (97%)	7 (3%)	37	36
1	D	208/209 (100%)	205 (99%)	3 (1%)	67	72
All	All	832/836 (100%)	810 (97%)	22 (3%)	46	48

All (22) residues with a non-rotameric sidechain are listed below:

Mol	Chain	Res	Type
1	A	16	ARG
1	A	73	MET
1	A	100	LYS
1	A	206	ASP
1	B	2	LYS
1	B	16	ARG
1	B	32	LEU
1	B	51	LYS
1	B	73	MET
1	B	112	ARG
1	B	209	LEU
1	B	262	ARG
1	C	2	LYS
1	C	7	LYS
1	C	49	ASP
1	C	65	ARG
1	C	68	GLU
1	C	73	MET
1	C	262	ARG
1	D	50	ILE
1	D	73	MET
1	D	112	ARG

Sometimes sidechains can be flipped to improve hydrogen bonding and reduce clashes. There are no such sidechains identified.

5.3.3 RNA [i](#)

There are no RNA molecules in this entry.

5.4 Non-standard residues in protein, DNA, RNA chains [i](#)

There are no non-standard protein/DNA/RNA residues in this entry.

5.5 Carbohydrates [i](#)

There are no monosaccharides in this entry.

5.6 Ligand geometry [i](#)

12 ligands are modelled in this entry.

In the following table, the Counts columns list the number of bonds (or angles) for which Mogul statistics could be retrieved, the number of bonds (or angles) that are observed in the model and the number of bonds (or angles) that are defined in the Chemical Component Dictionary. The Link column lists molecule types, if any, to which the group is linked. The Z score for a bond length (or angle) is the number of standard deviations the observed value is removed from the expected value. A bond length (or angle) with $|Z| > 2$ is considered an outlier worth inspection. RMSZ is the root-mean-square of all Z scores of the bond lengths (or angles).

Mol	Type	Chain	Res	Link	Bond lengths			Bond angles		
					Counts	RMSZ	# Z > 2	Counts	RMSZ	# Z > 2
3	TUD	B	302	-	37,37,37	1.90	3 (8%)	57,58,58	1.54	13 (22%)
2	NAP	B	301	-	45,52,52	4.22	16 (35%)	56,80,80	2.06	14 (25%)
3	TUD	D	302	-	37,37,37	1.66	3 (8%)	57,58,58	1.82	12 (21%)
3	TUD	A	302	-	37,37,37	1.92	5 (13%)	57,58,58	1.92	13 (22%)
4	GOL	A	303	-	5,5,5	0.55	0	5,5,5	0.59	0
4	GOL	B	303	-	5,5,5	0.46	0	5,5,5	0.47	0
4	GOL	D	303	-	5,5,5	0.52	0	5,5,5	0.54	0
2	NAP	A	301	-	45,52,52	4.32	15 (33%)	56,80,80	1.97	10 (17%)
4	GOL	C	303	-	5,5,5	0.42	0	5,5,5	0.35	0
2	NAP	C	301	-	45,52,52	4.10	11 (24%)	56,80,80	1.77	6 (10%)
2	NAP	D	301	-	45,52,52	4.18	15 (33%)	56,80,80	1.98	11 (19%)
3	TUD	C	302	-	37,37,37	1.82	7 (18%)	57,58,58	2.12	11 (19%)

In the following table, the Chirals column lists the number of chiral outliers, the number of chiral centers analysed, the number of these observed in the model and the number defined in the Chemical Component Dictionary. Similar counts are reported in the Torsion and Rings columns. '-' means no outliers of that kind were identified.

Mol	Type	Chain	Res	Link	Chirals	Torsions	Rings
3	TUD	B	302	-	-	3/16/77/77	0/4/4/4
2	NAP	B	301	-	-	19/31/67/67	0/5/5/5
3	TUD	D	302	-	-	2/16/77/77	0/4/4/4
3	TUD	A	302	-	-	0/16/77/77	0/4/4/4
4	GOL	A	303	-	-	0/4/4/4	-

Continued on next page...

Continued from previous page...

Mol	Type	Chain	Res	Link	Chirals	Torsions	Rings
4	GOL	B	303	-	-	0/4/4/4	-
4	GOL	D	303	-	-	2/4/4/4	-
2	NAP	A	301	-	-	17/31/67/67	0/5/5/5
4	GOL	C	303	-	-	0/4/4/4	-
2	NAP	C	301	-	-	10/31/67/67	0/5/5/5
2	NAP	D	301	-	-	17/31/67/67	0/5/5/5
3	TUD	C	302	-	-	5/16/77/77	0/4/4/4

All (75) bond length outliers are listed below:

Mol	Chain	Res	Type	Atoms	Z	Observed(Å)	Ideal(Å)
2	A	301	NAP	C2D-C1D	-15.87	1.29	1.53
2	B	301	NAP	C2D-C1D	-15.05	1.30	1.53
2	D	301	NAP	C2D-C1D	-14.95	1.31	1.53
2	C	301	NAP	C2D-C1D	-14.59	1.31	1.53
2	B	301	NAP	O4D-C1D	14.10	1.60	1.41
2	A	301	NAP	O4D-C1D	13.76	1.60	1.41
2	C	301	NAP	O4D-C1D	13.60	1.60	1.41
2	D	301	NAP	O4B-C1B	13.54	1.60	1.41
2	D	301	NAP	O4D-C1D	13.51	1.59	1.41
2	A	301	NAP	O4B-C1B	13.17	1.59	1.41
2	B	301	NAP	O4B-C1B	13.14	1.59	1.41
2	C	301	NAP	O4B-C1B	12.02	1.57	1.41
3	A	302	TUD	C26-S27	-8.37	1.65	1.77
3	B	302	TUD	C26-S27	-8.23	1.65	1.77
3	C	302	TUD	C26-S27	-7.43	1.66	1.77
3	D	302	TUD	C26-S27	-6.65	1.68	1.77
2	B	301	NAP	O4D-C4D	-6.43	1.30	1.45
2	D	301	NAP	O4B-C4B	-6.31	1.30	1.45
2	C	301	NAP	O4D-C4D	-6.21	1.31	1.45
2	A	301	NAP	O4B-C4B	-6.08	1.31	1.45
2	A	301	NAP	O4D-C4D	-5.97	1.31	1.45
2	D	301	NAP	C7N-N7N	5.70	1.43	1.33
2	B	301	NAP	O4B-C4B	-5.65	1.32	1.45
2	C	301	NAP	C7N-N7N	5.63	1.43	1.33
2	A	301	NAP	C7N-N7N	5.62	1.43	1.33
2	C	301	NAP	O4B-C4B	-5.61	1.32	1.45
2	D	301	NAP	O4D-C4D	-5.55	1.32	1.45
2	C	301	NAP	C2N-N1N	5.09	1.41	1.35
2	B	301	NAP	C7N-N7N	4.79	1.42	1.33
3	A	302	TUD	O30-S27	4.71	1.64	1.47

Continued on next page...

Continued from previous page...

Mol	Chain	Res	Type	Atoms	Z	Observed(Å)	Ideal(Å)
3	B	302	TUD	O30-S27	4.53	1.63	1.47
3	C	302	TUD	O30-S27	4.49	1.63	1.47
2	C	301	NAP	C3N-C7N	3.90	1.56	1.50
2	B	301	NAP	C2N-N1N	3.87	1.39	1.35
2	B	301	NAP	O2D-C2D	3.84	1.52	1.43
2	D	301	NAP	C2N-N1N	3.72	1.39	1.35
3	D	302	TUD	O30-S27	3.50	1.60	1.47
2	A	301	NAP	C4N-C3N	-3.48	1.33	1.39
2	A	301	NAP	O2D-C2D	3.37	1.50	1.43
2	A	301	NAP	C2N-N1N	3.37	1.39	1.35
3	B	302	TUD	O25-C24	-3.30	1.16	1.23
2	B	301	NAP	C4N-C3N	-3.29	1.33	1.39
2	C	301	NAP	O3B-C3B	-3.22	1.35	1.43
2	A	301	NAP	C3N-C7N	3.17	1.55	1.50
3	A	302	TUD	O25-C24	-3.14	1.16	1.23
2	A	301	NAP	C2A-N1A	3.08	1.39	1.33
2	C	301	NAP	O2D-C2D	3.04	1.50	1.43
3	D	302	TUD	O25-C24	-2.94	1.17	1.23
2	A	301	NAP	O3B-C3B	-2.79	1.36	1.43
2	D	301	NAP	C3N-C7N	2.72	1.54	1.50
3	C	302	TUD	C8-C7	2.51	1.57	1.53
3	A	302	TUD	C12-C13	-2.50	1.49	1.54
3	C	302	TUD	C19-C10	-2.47	1.50	1.54
2	B	301	NAP	O3B-C3B	-2.47	1.37	1.43
2	B	301	NAP	P2B-O1X	2.44	1.58	1.50
2	D	301	NAP	C2A-N3A	2.43	1.36	1.32
2	D	301	NAP	O3B-C3B	-2.43	1.37	1.43
2	D	301	NAP	PN-O2N	-2.41	1.44	1.55
2	B	301	NAP	C3N-C7N	2.40	1.54	1.50
2	D	301	NAP	O2D-C2D	2.40	1.48	1.43
2	D	301	NAP	C5D-C4D	2.38	1.59	1.51
2	B	301	NAP	O7N-C7N	2.37	1.28	1.24
2	C	301	NAP	C2A-N1A	2.36	1.38	1.33
3	C	302	TUD	O25-C24	-2.31	1.18	1.23
3	C	302	TUD	O7-C7	-2.30	1.38	1.43
2	A	301	NAP	C2N-C3N	2.28	1.42	1.39
2	A	301	NAP	O7N-C7N	2.28	1.28	1.24
2	D	301	NAP	C2A-N1A	2.21	1.38	1.33
2	A	301	NAP	C2A-N3A	2.20	1.35	1.32
2	B	301	NAP	C2A-N3A	2.10	1.35	1.32
2	B	301	NAP	C2A-N1A	2.10	1.37	1.33
3	A	302	TUD	O7-C7	-2.09	1.38	1.43

Continued on next page...

Continued from previous page...

Mol	Chain	Res	Type	Atoms	Z	Observed(Å)	Ideal(Å)
2	B	301	NAP	C2N-C3N	2.08	1.42	1.39
2	D	301	NAP	PN-O1N	-2.08	1.43	1.50
3	C	302	TUD	C11-C9	2.03	1.57	1.53

All (90) bond angle outliers are listed below:

Mol	Chain	Res	Type	Atoms	Z	Observed(°)	Ideal(°)
3	C	302	TUD	O28-S27-C26	10.82	119.94	106.92
3	A	302	TUD	O29-S27-C26	8.87	117.60	106.92
2	C	301	NAP	C5A-C6A-N6A	7.71	132.07	120.35
3	D	302	TUD	O29-S27-C26	7.56	116.02	106.92
2	A	301	NAP	C5A-C6A-N6A	7.46	131.69	120.35
2	B	301	NAP	C5A-C6A-N6A	7.33	131.50	120.35
2	D	301	NAP	C5A-C6A-N6A	7.27	131.40	120.35
2	D	301	NAP	N3A-C2A-N1A	-6.04	119.24	128.68
2	B	301	NAP	N3A-C2A-N1A	-5.89	119.48	128.68
2	A	301	NAP	N3A-C2A-N1A	-5.66	119.83	128.68
2	C	301	NAP	N3A-C2A-N1A	-5.55	120.00	128.68
2	B	301	NAP	C2N-N1N-C1D	5.15	130.60	119.14
3	C	302	TUD	O29-S27-C26	-5.02	100.87	106.92
2	A	301	NAP	C2N-N1N-C1D	5.00	130.28	119.14
2	A	301	NAP	N6A-C6A-N1A	-4.66	108.91	118.57
2	C	301	NAP	N6A-C6A-N1A	-4.60	109.03	118.57
2	B	301	NAP	N6A-C6A-N1A	-4.38	109.49	118.57
3	B	302	TUD	O28-S27-C26	4.32	112.11	106.92
2	D	301	NAP	N6A-C6A-N1A	-4.27	109.72	118.57
3	A	302	TUD	O30-S27-C26	-4.21	98.96	105.77
2	D	301	NAP	C3D-C2D-C1D	4.12	107.18	100.98
3	C	302	TUD	C9-C8-C7	3.91	116.55	111.88
3	D	302	TUD	C9-C8-C7	3.89	116.53	111.88
2	D	301	NAP	C3N-C7N-N7N	3.84	122.36	117.75
2	C	301	NAP	C1B-N9A-C4A	-3.76	120.03	126.64
3	A	302	TUD	C6-C7-C8	3.61	115.33	111.48
2	B	301	NAP	C4N-C3N-C7N	-3.57	111.48	121.04
3	A	302	TUD	C21-C20-C22	-3.57	104.76	110.36
3	B	302	TUD	O29-S27-C26	3.56	111.20	106.92
3	D	302	TUD	C5-C4-C3	-3.56	107.53	112.76
3	D	302	TUD	O30-S27-C26	-3.54	100.04	105.77
2	C	301	NAP	C3N-C7N-N7N	3.51	121.97	117.75
3	A	302	TUD	C5-C6-C7	-3.38	110.73	114.46
3	D	302	TUD	C6-C5-C4	-3.37	107.31	111.19
3	C	302	TUD	C19-C10-C9	-3.34	106.58	111.18

Continued on next page...

Continued from previous page...

Mol	Chain	Res	Type	Atoms	Z	Observed(°)	Ideal(°)
3	C	302	TUD	C6-C5-C4	-3.29	107.40	111.19
2	B	301	NAP	C1B-N9A-C4A	-3.26	120.92	126.64
2	A	301	NAP	C1B-N9A-C4A	-3.25	120.93	126.64
2	D	301	NAP	C6N-N1N-C2N	-3.20	119.06	121.97
2	B	301	NAP	O7N-C7N-C3N	-3.11	115.91	119.63
2	A	301	NAP	C4N-C3N-C7N	-3.10	112.74	121.04
3	A	302	TUD	C9-C8-C7	3.07	115.55	111.88
3	D	302	TUD	C15-C14-C8	-3.02	114.11	118.33
2	D	301	NAP	C1B-N9A-C4A	-2.96	121.43	126.64
2	B	301	NAP	C2N-C3N-C7N	2.87	127.79	119.46
2	A	301	NAP	C2N-C3N-C7N	2.85	127.75	119.46
3	B	302	TUD	C6-C5-C4	-2.73	108.05	111.19
3	D	302	TUD	C6-C7-C8	2.65	114.31	111.48
3	C	302	TUD	C23-C22-C20	-2.60	109.76	114.52
3	B	302	TUD	O30-S27-C26	2.53	109.86	105.77
3	D	302	TUD	C25-N26-C24	2.50	127.49	122.84
3	C	302	TUD	C18-C13-C17	-2.50	107.05	111.71
3	A	302	TUD	C1-C2-C3	2.48	113.66	110.47
3	C	302	TUD	C14-C8-C7	2.48	115.10	111.81
3	D	302	TUD	C4-C5-C10	2.47	115.28	112.66
2	B	301	NAP	C6N-N1N-C2N	-2.47	119.72	121.97
2	D	301	NAP	C4N-C3N-C7N	-2.46	114.45	121.04
2	A	301	NAP	C6N-N1N-C2N	-2.45	119.74	121.97
3	B	302	TUD	O25-C24-C23	2.45	126.50	122.02
2	A	301	NAP	C3N-C7N-N7N	2.44	120.67	117.75
3	B	302	TUD	O30-S27-O29	-2.42	105.35	111.27
3	C	302	TUD	C6-C5-C10	2.39	115.20	112.66
2	B	301	NAP	C3N-C7N-N7N	2.39	120.62	117.75
3	D	302	TUD	C12-C13-C17	2.39	120.15	116.57
2	B	301	NAP	C3N-C2N-N1N	-2.37	118.11	120.43
3	A	302	TUD	O3-C3-C2	2.32	116.07	110.16
2	D	301	NAP	O7N-C7N-C3N	-2.31	116.86	119.63
2	C	301	NAP	O7N-C7N-N7N	-2.31	119.30	122.58
2	D	301	NAP	C2D-C3D-C4D	2.30	107.12	102.64
3	C	302	TUD	C6-C7-C8	2.27	113.91	111.48
3	B	302	TUD	O29-S27-O28	-2.22	106.25	113.95
2	A	301	NAP	O7N-C7N-C3N	-2.22	116.98	119.63
3	B	302	TUD	C21-C20-C22	-2.20	106.92	110.36
2	B	301	NAP	O4D-C1D-C2D	2.20	110.14	106.93
3	B	302	TUD	C23-C24-N26	-2.18	112.75	116.42
3	D	302	TUD	C11-C9-C10	2.17	116.41	113.91
3	A	302	TUD	C2-C1-C10	2.16	116.49	112.78

Continued on next page...

Continued from previous page...

Mol	Chain	Res	Type	Atoms	Z	Observed(°)	Ideal(°)
3	B	302	TUD	C4-C3-C2	2.16	113.13	110.55
3	B	302	TUD	C6-C5-C10	2.14	114.93	112.66
3	A	302	TUD	C11-C9-C10	2.12	116.36	113.91
2	B	301	NAP	C2N-C3N-C4N	2.11	120.65	118.26
3	D	302	TUD	C18-C13-C12	-2.09	107.29	110.59
3	A	302	TUD	C23-C22-C20	-2.09	110.70	114.52
3	A	302	TUD	C15-C14-C13	-2.08	101.34	103.84
3	C	302	TUD	O3-C3-C2	2.08	115.46	110.16
2	D	301	NAP	C2N-C3N-C4N	2.07	120.60	118.26
3	B	302	TUD	C1-C10-C5	2.06	110.81	107.77
3	B	302	TUD	C6-C7-C8	2.05	113.67	111.48
3	A	302	TUD	C6-C5-C10	2.02	114.80	112.66
2	B	301	NAP	O5D-C5D-C4D	2.00	115.88	108.99

There are no chirality outliers.

All (75) torsion outliers are listed below:

Mol	Chain	Res	Type	Atoms
2	A	301	NAP	C5D-O5D-PN-O2N
2	A	301	NAP	O4D-C1D-N1N-C6N
2	A	301	NAP	C2D-C1D-N1N-C6N
2	B	301	NAP	C5D-O5D-PN-O3
2	B	301	NAP	C5D-O5D-PN-O2N
2	B	301	NAP	O4D-C1D-N1N-C6N
2	B	301	NAP	C2D-C1D-N1N-C6N
2	C	301	NAP	C5D-O5D-PN-O2N
2	C	301	NAP	O4D-C1D-N1N-C2N
2	D	301	NAP	C5D-O5D-PN-O1N
2	D	301	NAP	C5D-O5D-PN-O2N
2	D	301	NAP	O4D-C1D-N1N-C2N
2	D	301	NAP	O4D-C1D-N1N-C6N
2	D	301	NAP	C2D-C1D-N1N-C2N
2	D	301	NAP	C2D-C1D-N1N-C6N
2	D	301	NAP	C2N-C3N-C7N-N7N
3	B	302	TUD	C23-C24-N26-C25
3	B	302	TUD	O25-C24-N26-C25
3	B	302	TUD	N26-C25-C26-S27
3	C	302	TUD	N26-C25-C26-S27
3	C	302	TUD	C25-C26-S27-O28
3	C	302	TUD	C25-C26-S27-O30
4	D	303	GOL	C1-C2-C3-O3
2	D	301	NAP	C4N-C3N-C7N-N7N

Continued on next page...

Continued from previous page...

Mol	Chain	Res	Type	Atoms
2	D	301	NAP	C2N-C3N-C7N-O7N
2	D	301	NAP	C4N-C3N-C7N-O7N
2	C	301	NAP	C3B-C2B-O2B-P2B
3	C	302	TUD	C26-C25-N26-C24
2	B	301	NAP	O4D-C4D-C5D-O5D
2	A	301	NAP	C2N-C3N-C7N-O7N
2	A	301	NAP	C2N-C3N-C7N-N7N
2	A	301	NAP	C4N-C3N-C7N-N7N
2	A	301	NAP	C4N-C3N-C7N-O7N
2	D	301	NAP	C3B-C2B-O2B-P2B
2	B	301	NAP	O4B-C4B-C5B-O5B
2	D	301	NAP	C1B-C2B-O2B-P2B
2	A	301	NAP	C2B-O2B-P2B-O2X
2	A	301	NAP	C5D-O5D-PN-O3
2	B	301	NAP	C2B-O2B-P2B-O2X
2	C	301	NAP	C2B-O2B-P2B-O2X
2	C	301	NAP	C5D-O5D-PN-O3
2	D	301	NAP	C2B-O2B-P2B-O2X
2	D	301	NAP	C2B-O2B-P2B-O3X
3	D	302	TUD	N26-C25-C26-S27
4	D	303	GOL	O2-C2-C3-O3
2	D	301	NAP	PA-O3-PN-O2N
2	A	301	NAP	C5D-O5D-PN-O1N
2	B	301	NAP	C5D-O5D-PN-O1N
2	C	301	NAP	C5D-O5D-PN-O1N
3	C	302	TUD	C25-C26-S27-O29
2	C	301	NAP	C1B-C2B-O2B-P2B
2	B	301	NAP	C3B-C4B-C5B-O5B
2	B	301	NAP	C3D-C4D-C5D-O5D
2	B	301	NAP	PA-O3-PN-O2N
2	C	301	NAP	PA-O3-PN-O2N
2	B	301	NAP	C2N-C3N-C7N-O7N
2	A	301	NAP	PN-O3-PA-O1A
2	B	301	NAP	C2N-C3N-C7N-N7N
2	B	301	NAP	C3B-C2B-O2B-P2B
2	B	301	NAP	C4N-C3N-C7N-O7N
2	B	301	NAP	C4N-C3N-C7N-N7N
2	A	301	NAP	C1B-C2B-O2B-P2B
2	A	301	NAP	C2B-O2B-P2B-O3X
2	A	301	NAP	C2D-C1D-N1N-C2N
2	B	301	NAP	C2D-C1D-N1N-C2N
2	D	301	NAP	C5D-O5D-PN-O3

Continued on next page...

Continued from previous page...

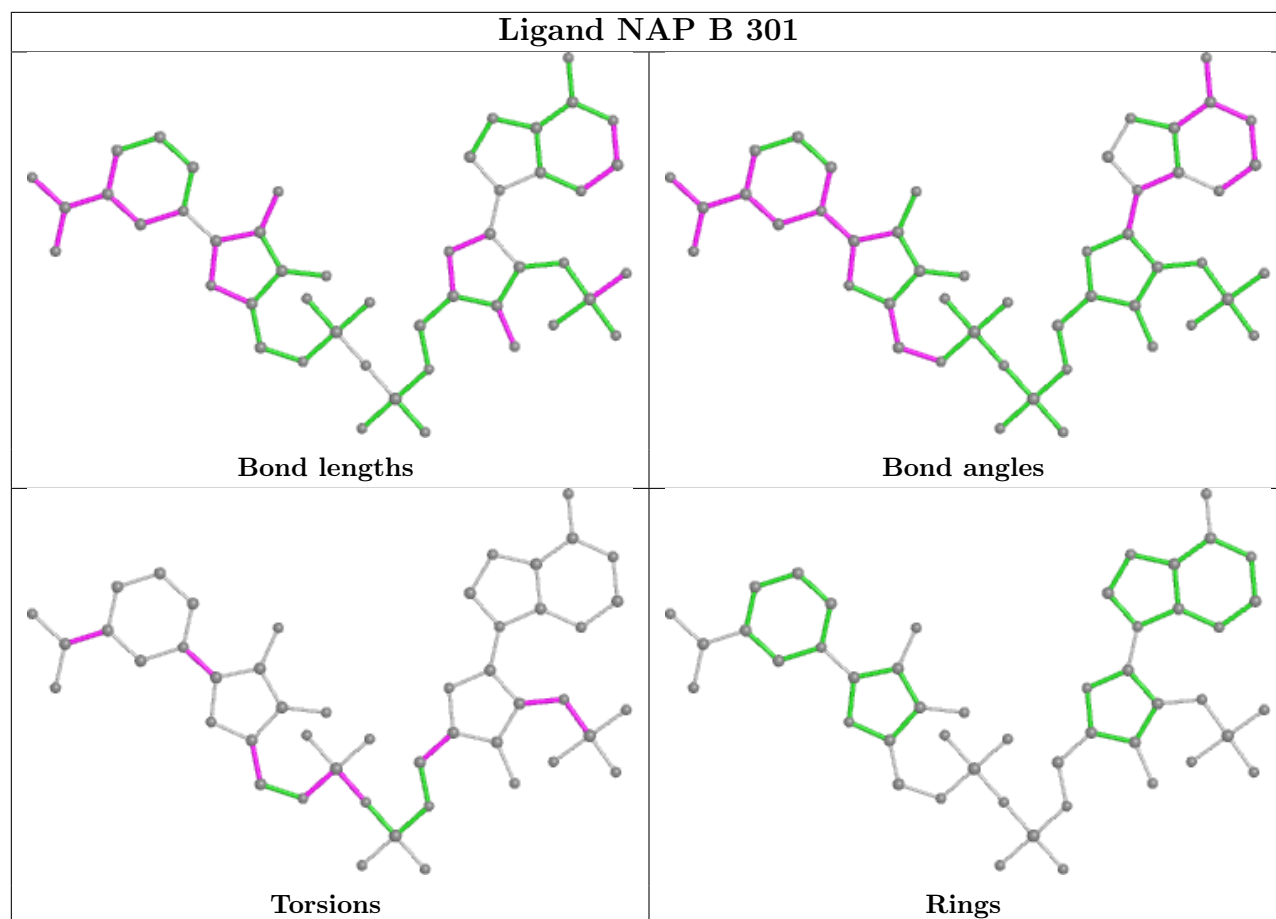
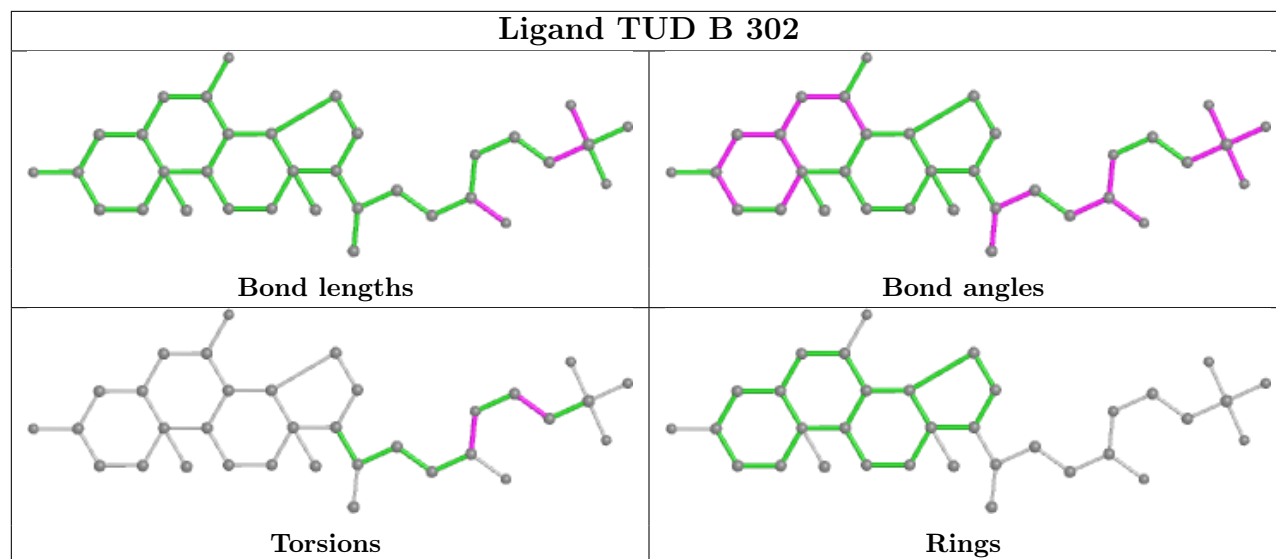
Mol	Chain	Res	Type	Atoms
2	A	301	NAP	O4B-C4B-C5B-O5B
2	C	301	NAP	O4B-C4B-C5B-O5B
2	D	301	NAP	O4B-C4B-C5B-O5B
2	A	301	NAP	PA-O3-PN-O2N
2	B	301	NAP	PA-O3-PN-O1N
2	C	301	NAP	PA-O3-PN-O1N
2	B	301	NAP	C1B-C2B-O2B-P2B
2	A	301	NAP	C5B-O5B-PA-O1A
3	D	302	TUD	C25-C26-S27-O29

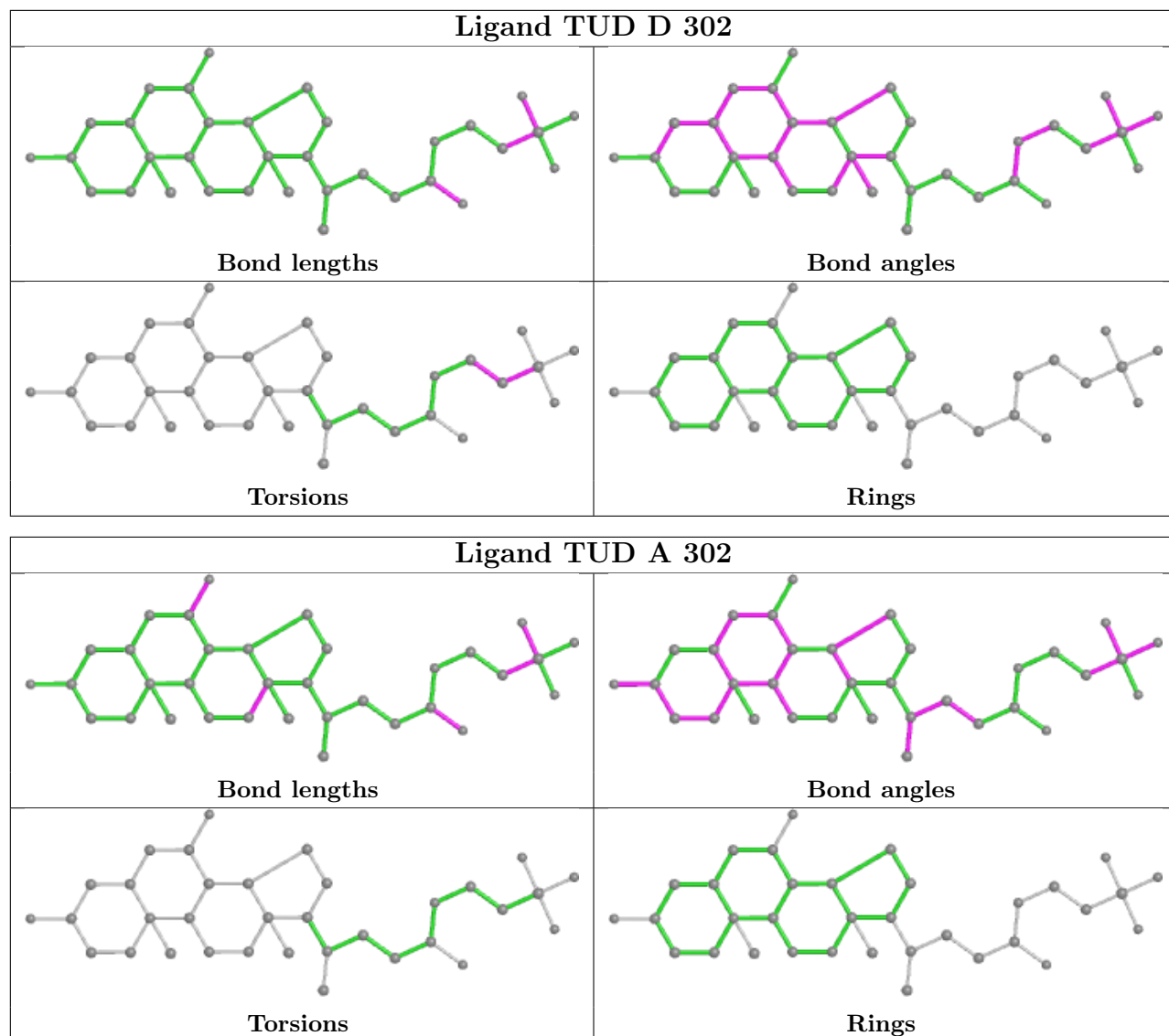
There are no ring outliers.

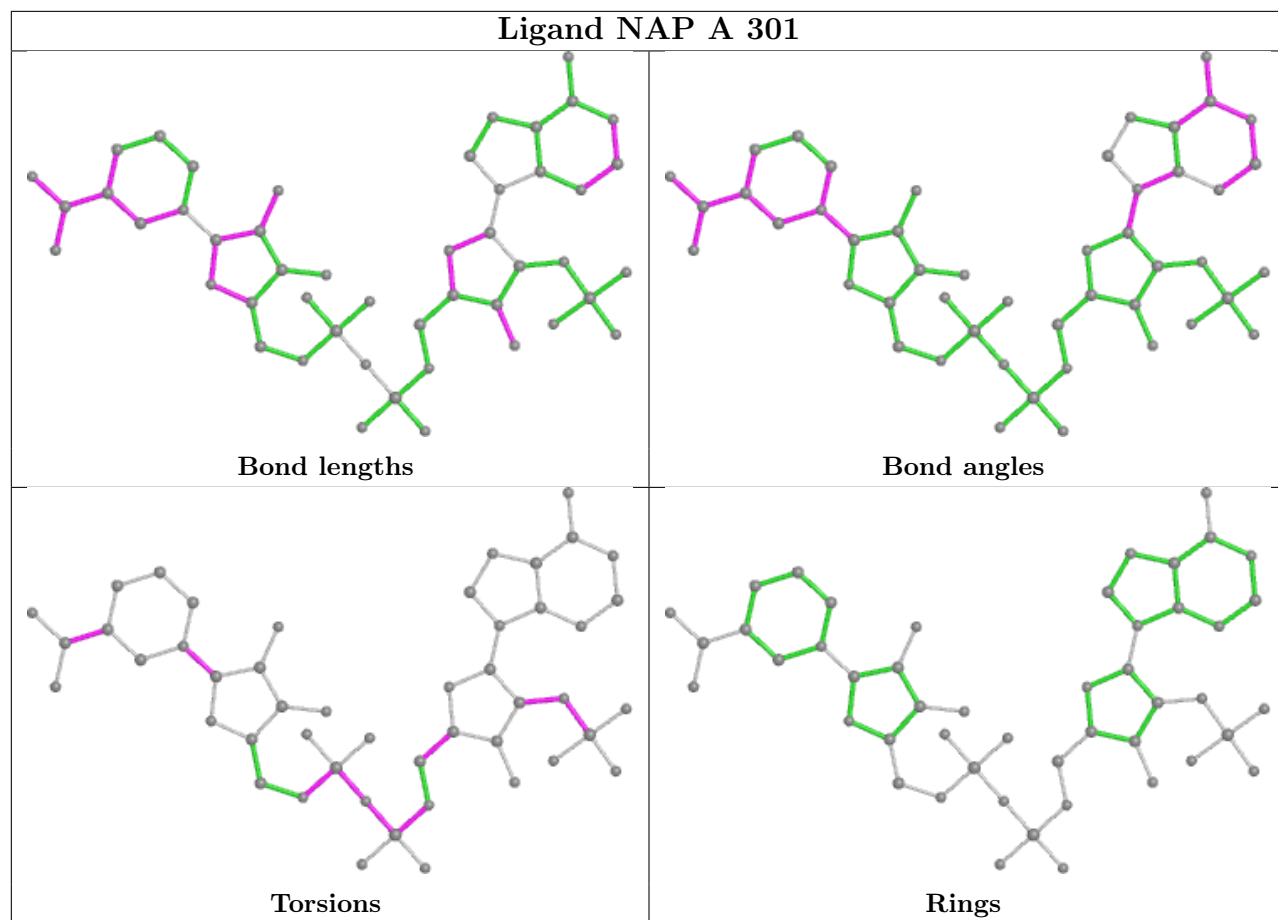
8 monomers are involved in 53 short contacts:

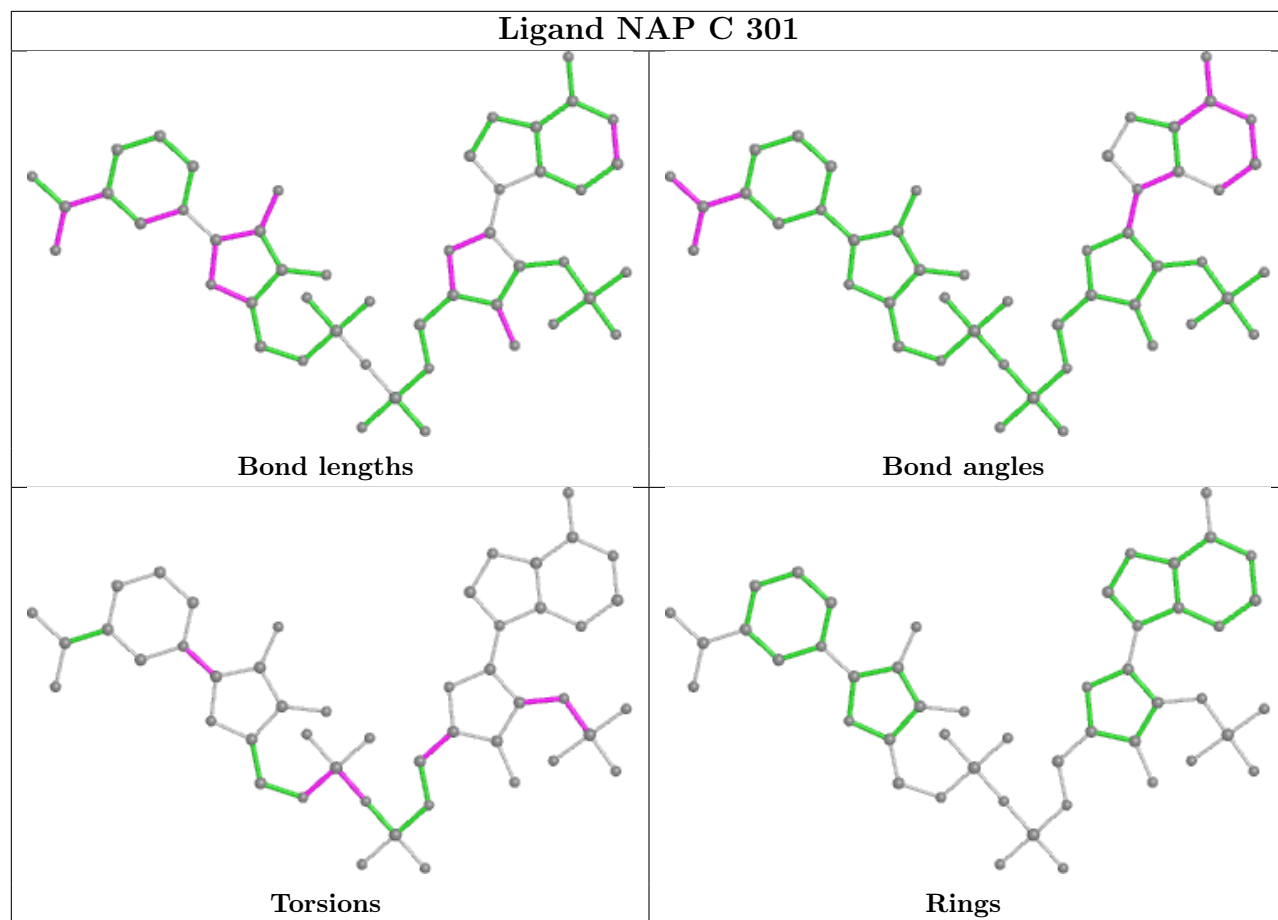
Mol	Chain	Res	Type	Clashes	Symm-Clashes
3	B	302	TUD	4	0
2	B	301	NAP	18	0
3	D	302	TUD	11	0
3	A	302	TUD	5	0
2	A	301	NAP	14	0
2	C	301	NAP	4	0
2	D	301	NAP	13	0
3	C	302	TUD	2	0

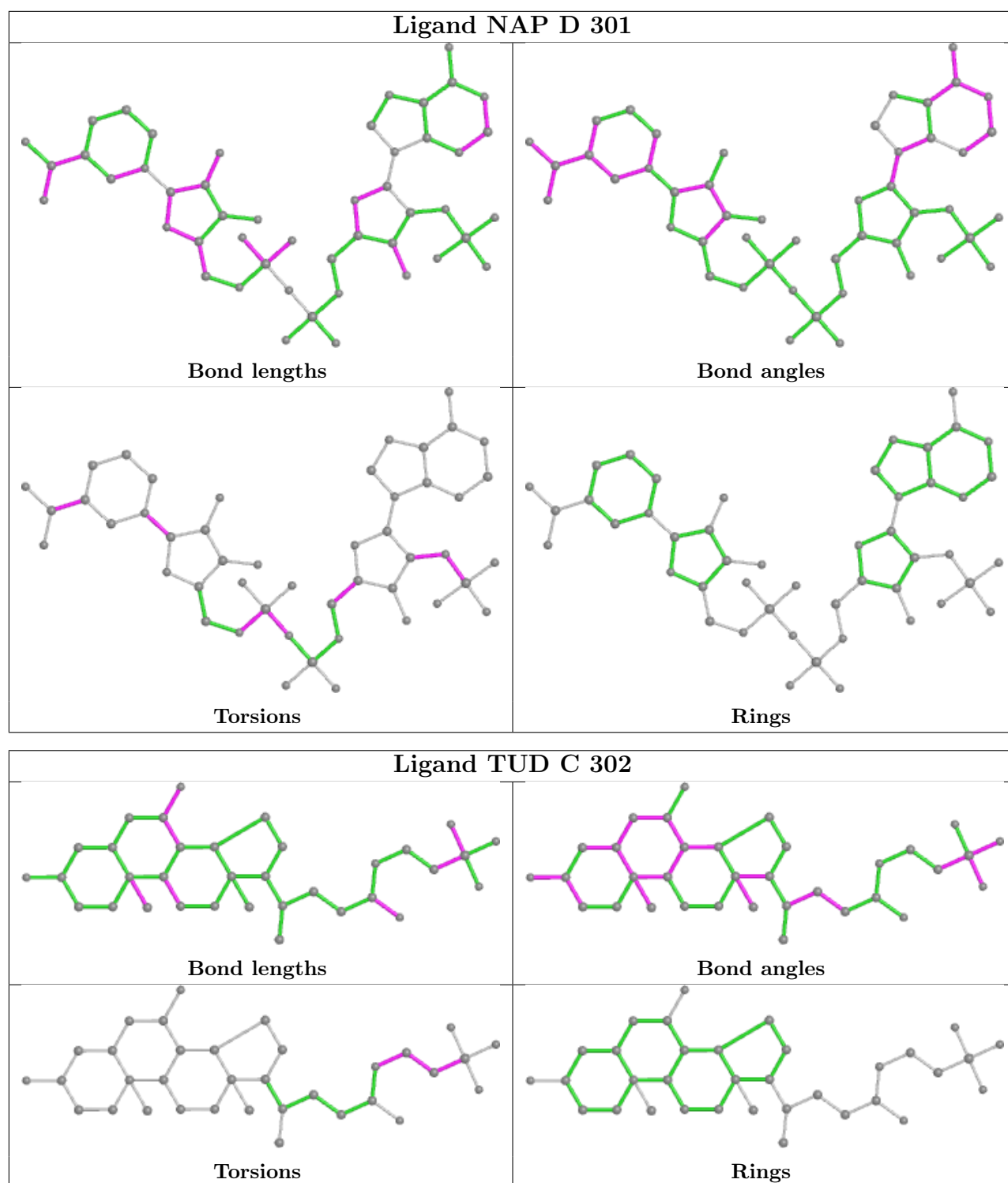
The following is a two-dimensional graphical depiction of Mogul quality analysis of bond lengths, bond angles, torsion angles, and ring geometry for all instances of the Ligand of Interest. In addition, ligands with molecular weight > 250 and outliers as shown on the validation Tables will also be included. For torsion angles, if less than 5% of the Mogul distribution of torsion angles is within 10 degrees of the torsion angle in question, then that torsion angle is considered an outlier. Any bond that is central to one or more torsion angles identified as an outlier by Mogul will be highlighted in the graph. For rings, the root-mean-square deviation (RMSD) between the ring in question and similar rings identified by Mogul is calculated over all ring torsion angles. If the average RMSD is greater than 60 degrees and the minimal RMSD between the ring in question and any Mogul-identified rings is also greater than 60 degrees, then that ring is considered an outlier. The outliers are highlighted in purple. The color gray indicates Mogul did not find sufficient equivalents in the CSD to analyse the geometry.











5.7 Other polymers [\(i\)](#)

There are no such residues in this entry.

5.8 Polymer linkage issues

There are no chain breaks in this entry.

6 Fit of model and data [i](#)

6.1 Protein, DNA and RNA chains [i](#)

In the following table, the column labelled ‘#RSRZ> 2’ contains the number (and percentage) of RSRZ outliers, followed by percent RSRZ outliers for the chain as percentile scores relative to all X-ray entries and entries of similar resolution. The OWAB column contains the minimum, median, 95th percentile and maximum values of the occupancy-weighted average B-factor per residue. The column labelled ‘Q< 0.9’ lists the number of (and percentage) of residues with an average occupancy less than 0.9.

Mol	Chain	Analysed	<RSRZ>	#RSRZ>2	OWAB(Å ²)	Q<0.9
1	A	261/262 (99%)	-0.03	0 100 100	5, 12, 31, 50	0
1	B	261/262 (99%)	-0.25	0 100 100	5, 10, 25, 46	0
1	C	261/262 (99%)	-0.12	1 (0%) 92 92	5, 11, 28, 48	0
1	D	261/262 (99%)	-0.11	1 (0%) 92 92	5, 12, 31, 41	0
All	All	1044/1048 (99%)	-0.12	2 (0%) 95 94	5, 11, 29, 50	0

All (2) RSRZ outliers are listed below:

Mol	Chain	Res	Type	RSRZ
1	D	261	PRO	2.3
1	C	262	ARG	2.2

6.2 Non-standard residues in protein, DNA, RNA chains [i](#)

There are no non-standard protein/DNA/RNA residues in this entry.

6.3 Carbohydrates [i](#)

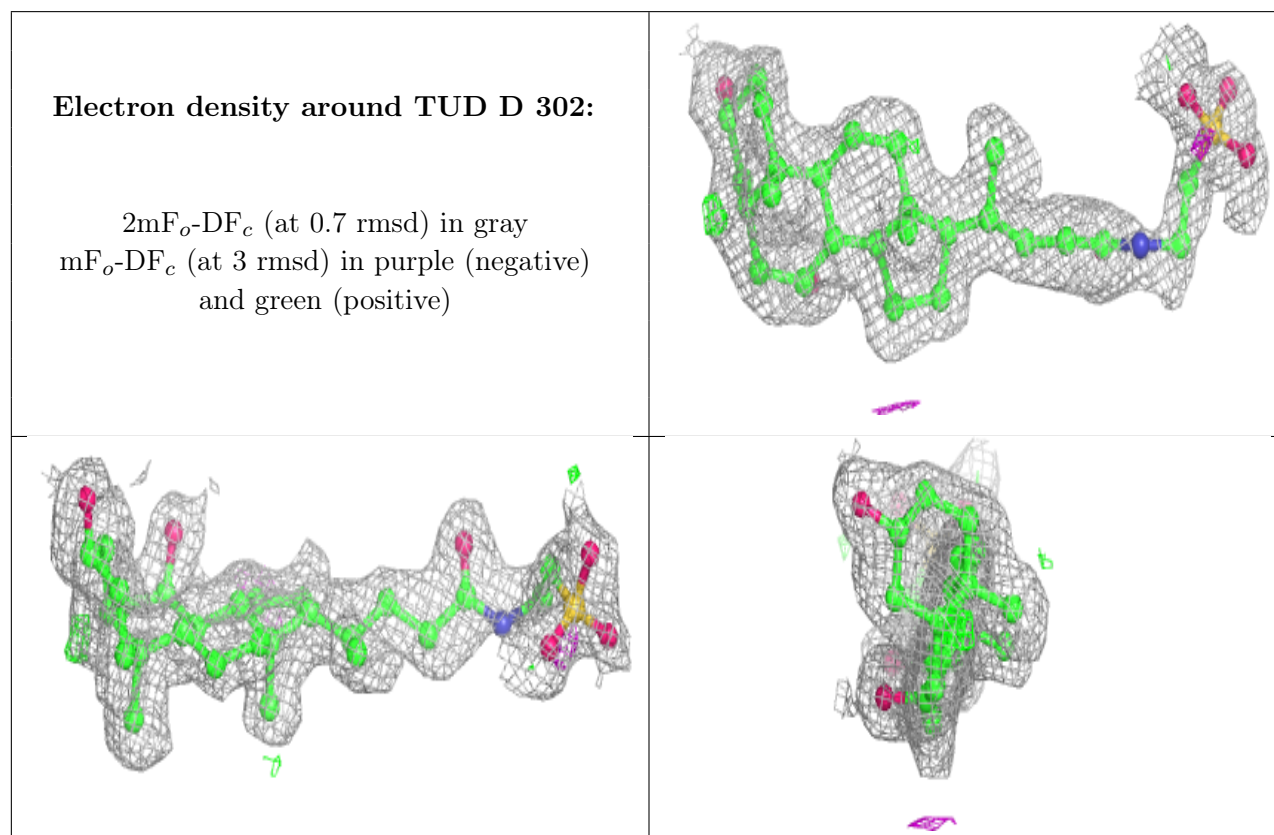
There are no monosaccharides in this entry.

6.4 Ligands [i](#)

In the following table, the Atoms column lists the number of modelled atoms in the group and the number defined in the chemical component dictionary. The B-factors column lists the minimum, median, 95th percentile and maximum values of B factors of atoms in the group. The column labelled ‘Q< 0.9’ lists the number of atoms with occupancy less than 0.9.

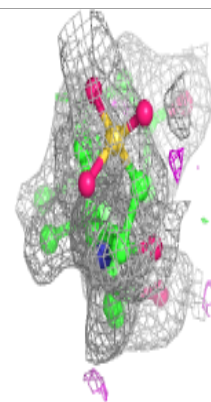
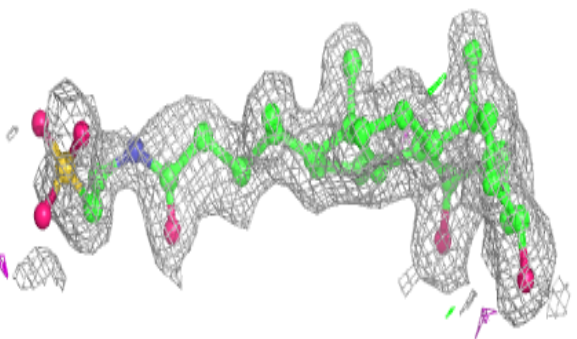
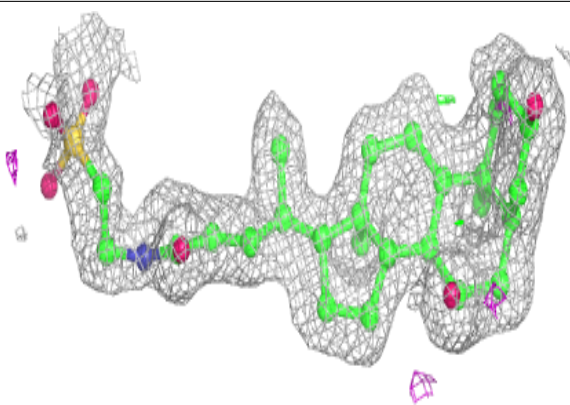
Mol	Type	Chain	Res	Atoms	RSCC	RSR	B-factors(\AA^2)	Q<0.9
3	TUD	D	302	34/34	0.82	0.16	17,20,57,65	0
3	TUD	C	302	34/34	0.85	0.17	11,15,80,89	0
2	NAP	B	301	48/48	0.86	0.23	23,33,75,86	0
4	GOL	D	303	6/6	0.86	0.21	21,22,25,34	0
3	TUD	A	302	34/34	0.87	0.17	9,11,58,64	0
3	TUD	B	302	34/34	0.90	0.16	10,12,109,116	0
2	NAP	D	301	48/48	0.92	0.17	18,25,107,111	0
2	NAP	A	301	48/48	0.93	0.16	17,23,76,79	0
4	GOL	B	303	6/6	0.94	0.10	12,13,13,13	0
2	NAP	C	301	48/48	0.94	0.15	16,21,61,64	0
4	GOL	A	303	6/6	0.95	0.10	14,15,15,16	0
4	GOL	C	303	6/6	0.96	0.08	13,14,15,15	0

The following is a graphical depiction of the model fit to experimental electron density of all instances of the Ligand of Interest. In addition, ligands with molecular weight > 250 and outliers as shown on the geometry validation Tables will also be included. Each fit is shown from different orientation to approximate a three-dimensional view.

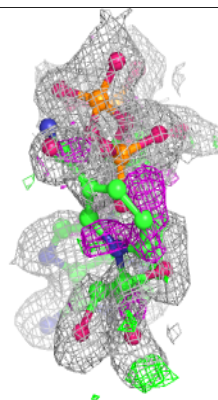
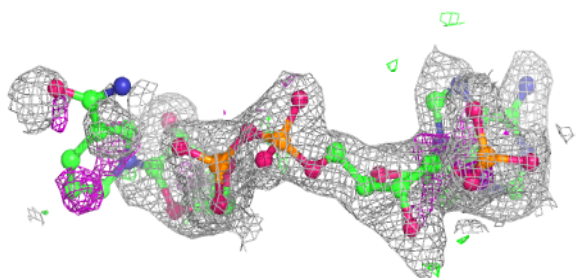
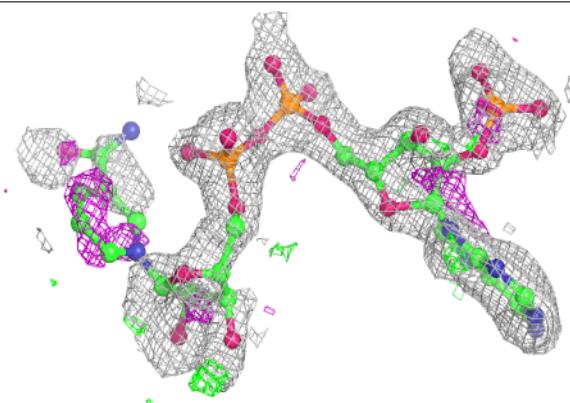


Electron density around TUD C 302:

$2mF_o-DF_c$ (at 0.7 rmsd) in gray
 mF_o-DF_c (at 3 rmsd) in purple (negative)
and green (positive)

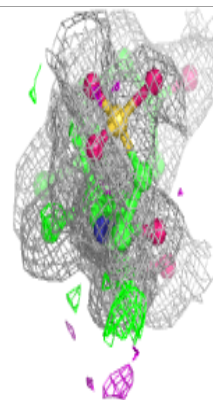
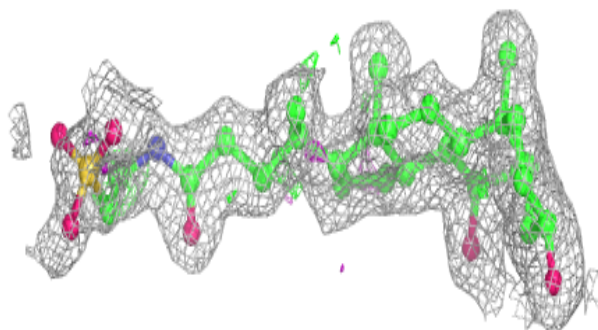
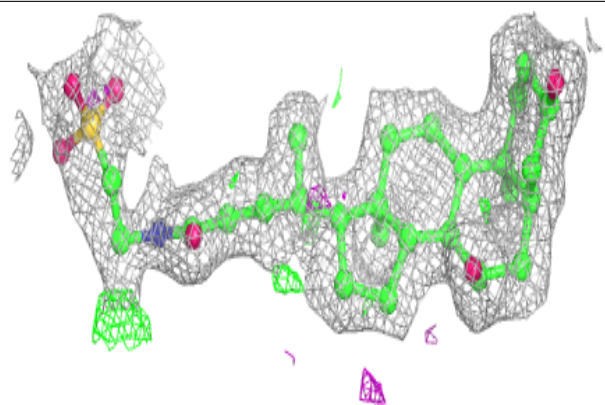
**Electron density around NAP B 301:**

$2mF_o-DF_c$ (at 0.7 rmsd) in gray
 mF_o-DF_c (at 3 rmsd) in purple (negative)
and green (positive)

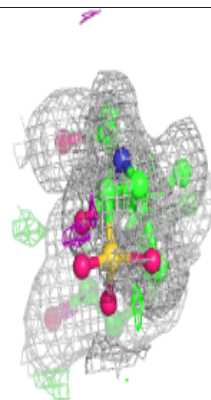
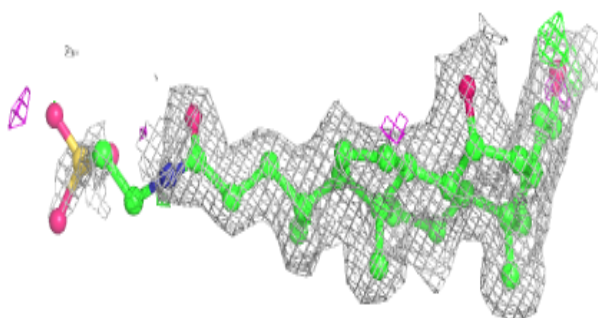
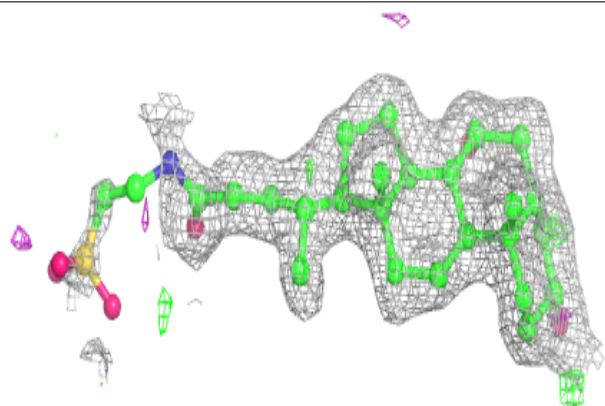


Electron density around TUD A 302:

$2mF_o-DF_c$ (at 0.7 rmsd) in gray
 mF_o-DF_c (at 3 rmsd) in purple (negative)
and green (positive)

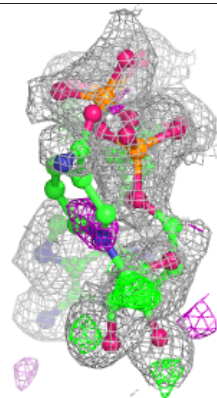
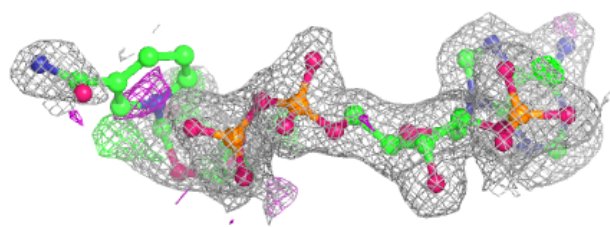
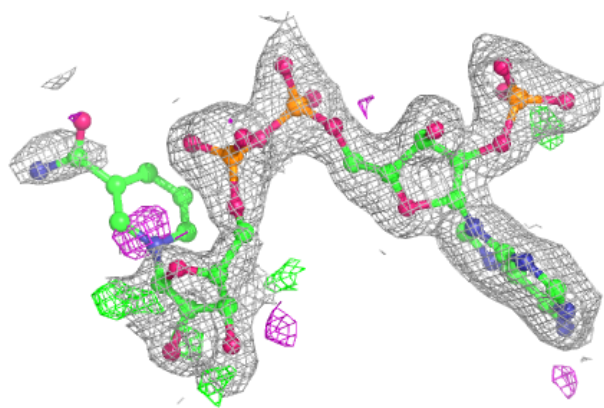
**Electron density around TUD B 302:**

$2mF_o-DF_c$ (at 0.7 rmsd) in gray
 mF_o-DF_c (at 3 rmsd) in purple (negative)
and green (positive)

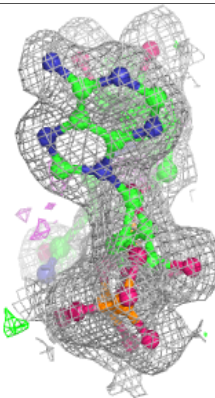
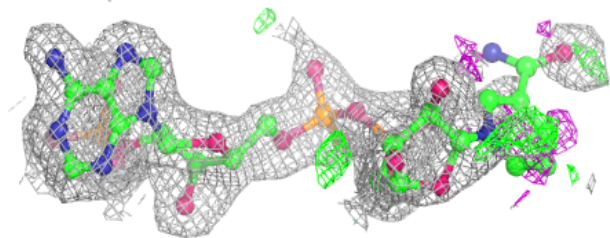
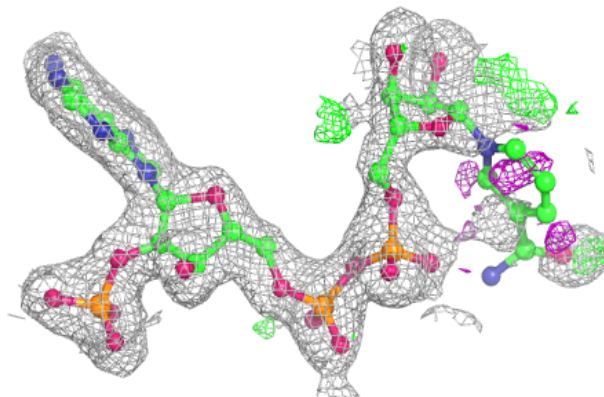


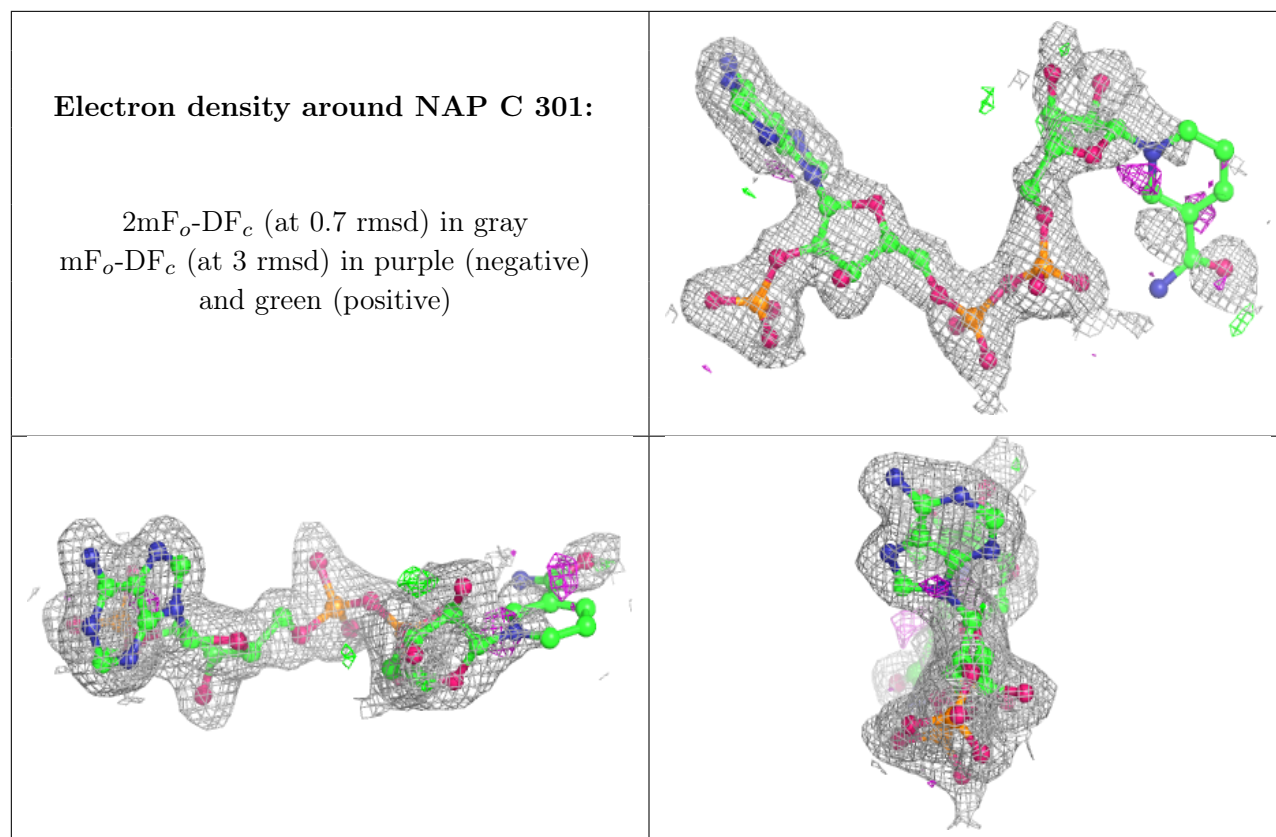
Electron density around NAP D 301:

$2mF_o-DF_c$ (at 0.7 rmsd) in gray
 mF_o-DF_c (at 3 rmsd) in purple (negative)
and green (positive)

**Electron density around NAP A 301:**

$2mF_o-DF_c$ (at 0.7 rmsd) in gray
 mF_o-DF_c (at 3 rmsd) in purple (negative)
and green (positive)





6.5 Other polymers [i](#)

There are no such residues in this entry.