



# Full wwPDB X-ray Structure Validation Report ⓘ

Nov 21, 2023 – 05:10 AM JST

PDB ID : 7EQU  
Title : Crystal structure of the C-lobe of lactoferrin produced by limited proteolysis using pepsin at 2.74Å resolution  
Authors : Maurya, A.; Singh, J.; Sharma, A.; Sharma, P.; Sharma, S.; Singh, T.P.  
Deposited on : 2021-05-04  
Resolution : 2.74 Å(reported)

This is a Full wwPDB X-ray Structure Validation Report for a publicly released PDB entry.

We welcome your comments at [validation@mail.wwpdb.org](mailto:validation@mail.wwpdb.org)

A user guide is available at

<https://www.wwpdb.org/validation/2017/XrayValidationReportHelp>

with specific help available everywhere you see the ⓘ symbol.

The types of validation reports are described at

<http://www.wwpdb.org/validation/2017/FAQs#types>.

---

The following versions of software and data (see [references ⓘ](#)) were used in the production of this report:

MolProbity : 4.02b-467  
Mogul : 1.8.5 (274361), CSD as541be (2020)  
Xtriage (Phenix) : 1.13  
EDS : 2.36  
Percentile statistics : 20191225.v01 (using entries in the PDB archive December 25th 2019)  
Refmac : 5.8.0158  
CCP4 : 7.0.044 (Gargrove)  
Ideal geometry (proteins) : Engh & Huber (2001)  
Ideal geometry (DNA, RNA) : Parkinson et al. (1996)  
Validation Pipeline (wwPDB-VP) : 2.36

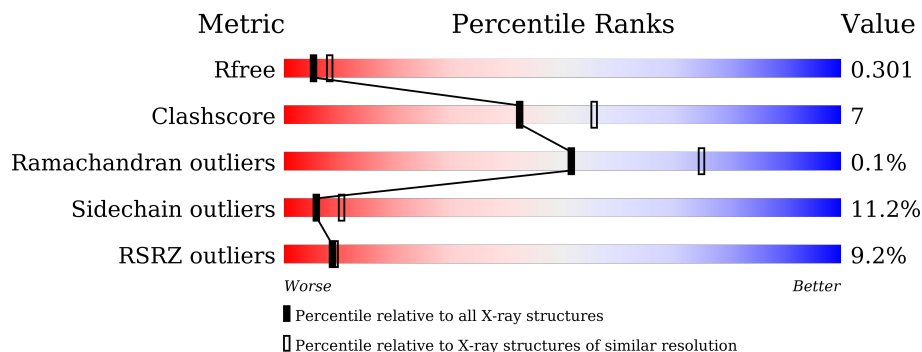
# 1 Overall quality at a glance

The following experimental techniques were used to determine the structure:

*X-RAY DIFFRACTION*

The reported resolution of this entry is 2.74 Å.

Percentile scores (ranging between 0-100) for global validation metrics of the entry are shown in the following graphic. The table shows the number of entries on which the scores are based.



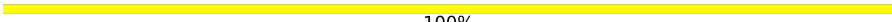

Metric	Whole archive (#Entries)	Similar resolution (#Entries, resolution range(Å))
$R_{free}$	130704	1271 (2.76-2.72)
Clashscore	141614	1322 (2.76-2.72)
Ramachandran outliers	138981	1297 (2.76-2.72)
Sidechain outliers	138945	1298 (2.76-2.72)
RSRZ outliers	127900	1243 (2.76-2.72)

The table below summarises the geometric issues observed across the polymeric chains and their fit to the electron density. The red, orange, yellow and green segments of the lower bar indicate the fraction of residues that contain outliers for  $\geq 3$ , 2, 1 and 0 types of geometric quality criteria respectively. A grey segment represents the fraction of residues that are not modelled. The numeric value for each fraction is indicated below the corresponding segment, with a dot representing fractions  $\leq 5\%$ . The upper red bar (where present) indicates the fraction of residues that have poor fit to the electron density. The numeric value is given above the bar.

Mol	Chain	Length	Quality of chain
1	A	348	
1	B	348	
2	C	3	
2	D	3	
2	E	3	
3	F	2	

*Continued on next page...*

*Continued from previous page...*

Mol	Chain	Length	Quality of chain
3	G	2	 100%
4	H	3	 100%

## 2 Entry composition i

There are 7 unique types of molecules in this entry. The entry contains 5549 atoms, of which 0 are hydrogens and 0 are deuteriums.

In the tables below, the ZeroOcc column contains the number of atoms modelled with zero occupancy, the AltConf column contains the number of residues with at least one atom in alternate conformation and the Trace column contains the number of residues modelled with at most 2 atoms.

- Molecule 1 is a protein called Lactotransferrin.

Mol	Chain	Residues	Atoms					ZeroOcc	AltConf	Trace
			Total	C	N	O	S			
1	A	348	2658	1656	464	517	21	0	0	0
1	B	348	2658	1656	464	517	21	0	0	0

There are 4 discrepancies between the modelled and reference sequences:

Chain	Residue	Modelled	Actual	Comment	Reference
A	565	LYS	ASN	conflict	UNP P24627
A	608	GLU	LYS	conflict	UNP P24627
B	565	LYS	ASN	conflict	UNP P24627
B	608	GLU	LYS	conflict	UNP P24627

- Molecule 2 is an oligosaccharide called beta-D-mannopyranose-(1-4)-2-acetamido-2-deoxy-beta-D-glucopyranose-(1-4)-2-acetamido-2-deoxy-beta-D-glucopyranose.



Mol	Chain	Residues	Atoms				ZeroOcc	AltConf	Trace
			Total	C	N	O			
2	C	3	39	22	2	15	0	0	0
2	D	3	39	22	2	15	0	0	0
2	E	3	39	22	2	15	0	0	0

- Molecule 3 is an oligosaccharide called 2-acetamido-2-deoxy-beta-D-glucopyranose-(1-4)-2-acetamido-2-deoxy-beta-D-glucopyranose.



Mol	Chain	Residues	Atoms				ZeroOcc	AltConf	Trace
3	G	2	Total	C	N	O	0	0	0
			27	16	2	9			
3	F	2	Total	C	N	O	0	0	0
			28	16	2	10			

- Molecule 4 is an oligosaccharide called beta-D-mannopyranose-(1-3)-2-acetamido-2-deoxy-beta-D-glucopyranose-(1-4)-2-acetamido-2-deoxy-beta-D-glucopyranose.

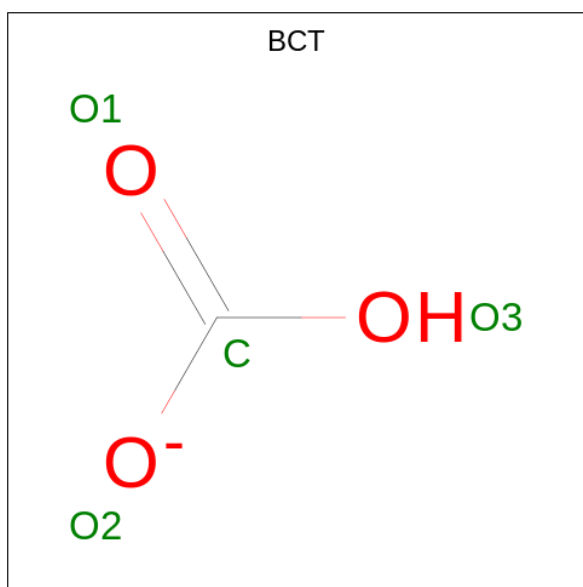


Mol	Chain	Residues	Atoms				ZeroOcc	AltConf	Trace
4	H	3	Total	C	N	O	0	0	0
			39	22	2	15			

- Molecule 5 is FE (III) ION (three-letter code: FE) (formula: Fe).

Mol	Chain	Residues	Atoms		ZeroOcc	AltConf
5	A	1	Total	Fe	0	0
			1	1		
5	B	1	Total	Fe	0	0
			1	1		

- Molecule 6 is BICARBONATE ION (three-letter code: BCT) (formula: CHO<sub>3</sub>).



Mol	Chain	Residues	Atoms	ZeroOcc	AltConf
6	A	1	Total C O 4 1 3	0	0
6	B	1	Total C O 4 1 3	0	0

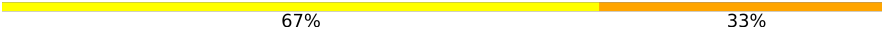
- Molecule 7 is water.

Mol	Chain	Residues	Atoms	ZeroOcc	AltConf
7	A	7	Total O 7 7	0	0
7	B	5	Total O 5 5	0	0



MAG1  
MAG2  
BMA3

- Molecule 2: beta-D-mannopyranose-(1-4)-2-acetamido-2-deoxy-beta-D-glucopyranose-(1-4)-2-acetamido-2-deoxy-beta-D-glucopyranose

Chain D:  67% 33%

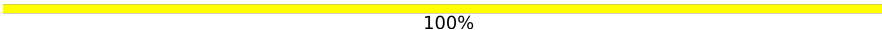
MAG1  
MAG2  
BMA3

- Molecule 2: beta-D-mannopyranose-(1-4)-2-acetamido-2-deoxy-beta-D-glucopyranose-(1-4)-2-acetamido-2-deoxy-beta-D-glucopyranose

Chain E:  33% 67%

MAG1  
MAG2  
BMA3

- Molecule 3: 2-acetamido-2-deoxy-beta-D-glucopyranose-(1-4)-2-acetamido-2-deoxy-beta-D-glucopyranose

Chain G:  100%

MAG1  
MAG2

- Molecule 3: 2-acetamido-2-deoxy-beta-D-glucopyranose-(1-4)-2-acetamido-2-deoxy-beta-D-glucopyranose

Chain F:  50% 50%

MAG1  
MAG2

- Molecule 4: beta-D-mannopyranose-(1-3)-2-acetamido-2-deoxy-beta-D-glucopyranose-(1-4)-2-acetamido-2-deoxy-beta-D-glucopyranose

Chain H:  100%

MAG1  
MAG2  
BMA3



## 4 Data and refinement statistics

Property	Value	Source
Space group	C 1 2 1	Depositor
Cell constants a, b, c, $\alpha$ , $\beta$ , $\gamma$	153.76Å 81.55Å 111.36Å 90.00° 129.95° 90.00°	Depositor
Resolution (Å)	76.85 – 2.74 76.73 – 2.74	Depositor EDS
% Data completeness (in resolution range)	97.0 (76.85-2.74) 97.0 (76.73-2.74)	Depositor EDS
$R_{merge}$	0.06	Depositor
$R_{sym}$	(Not available)	Depositor
$\langle I/\sigma(I) \rangle$ <sup>1</sup>	2.96 (at 2.73Å)	Xtrriage
Refinement program	REFMAC 5.8.0267	Depositor
R, $R_{free}$	0.239 , 0.298 0.243 , 0.301	Depositor DCC
$R_{free}$ test set	1361 reflections (5.03%)	wwPDB-VP
Wilson B-factor (Å <sup>2</sup> )	85.7	Xtrriage
Anisotropy	0.211	Xtrriage
Bulk solvent $k_{sol}$ (e/Å <sup>3</sup> ), $B_{sol}$ (Å <sup>2</sup> )	0.29 , 68.3	EDS
L-test for twinning <sup>2</sup>	$\langle  L  \rangle = 0.49$ , $\langle L^2 \rangle = 0.32$	Xtrriage
Estimated twinning fraction	No twinning to report.	Xtrriage
$F_o, F_c$ correlation	0.93	EDS
Total number of atoms	5549	wwPDB-VP
Average B, all atoms (Å <sup>2</sup> )	106.0	wwPDB-VP

Xtrriage's analysis on translational NCS is as follows: *The largest off-origin peak in the Patterson function is 4.80% of the height of the origin peak. No significant pseudotranslation is detected.*

<sup>1</sup>Intensities estimated from amplitudes.

<sup>2</sup>Theoretical values of  $\langle |L| \rangle$ ,  $\langle L^2 \rangle$  for acentric reflections are 0.5, 0.333 respectively for untwinned datasets, and 0.375, 0.2 for perfectly twinned datasets.

## 5 Model quality [i](#)

### 5.1 Standard geometry [i](#)

Bond lengths and bond angles in the following residue types are not validated in this section: BCT, FE, NAG, BMA

The Z score for a bond length (or angle) is the number of standard deviations the observed value is removed from the expected value. A bond length (or angle) with  $|Z| > 5$  is considered an outlier worth inspection. RMSZ is the root-mean-square of all Z scores of the bond lengths (or angles).

Mol	Chain	Bond lengths		Bond angles	
		RMSZ	# Z  >5	RMSZ	# Z  >5
1	A	0.69	0/2708	0.81	0/3670
1	B	0.69	0/2708	0.80	0/3670
All	All	0.69	0/5416	0.81	0/7340

Chiral center outliers are detected by calculating the chiral volume of a chiral center and verifying if the center is modelled as a planar moiety or with the opposite hand. A planarity outlier is detected by checking planarity of atoms in a peptide group, atoms in a mainchain group or atoms of a sidechain that are expected to be planar.

Mol	Chain	#Chirality outliers	#Planarity outliers
1	A	0	2

There are no bond length outliers.

There are no bond angle outliers.

There are no chirality outliers.

All (2) planarity outliers are listed below:

Mol	Chain	Res	Type	Group
1	A	490	SER	Peptide
1	A	625	CYS	Peptide

### 5.2 Too-close contacts [i](#)

In the following table, the Non-H and H(model) columns list the number of non-hydrogen atoms and hydrogen atoms in the chain respectively. The H(added) column lists the number of hydrogen atoms added and optimized by MolProbity. The Clashes column lists the number of clashes within the asymmetric unit, whereas Symm-Clashes lists symmetry-related clashes.

Mol	Chain	Non-H	H(model)	H(added)	Clashes	Symm-Clashes
1	A	2658	0	2580	39	0
1	B	2658	0	2581	33	0
2	C	39	0	34	0	0
2	D	39	0	34	1	0
2	E	39	0	34	1	0
3	F	28	0	25	1	0
3	G	27	0	25	0	0
4	H	39	0	34	3	0
5	A	1	0	0	0	0
5	B	1	0	0	0	0
6	A	4	0	0	0	0
6	B	4	0	0	1	0
7	A	7	0	0	0	0
7	B	5	0	0	0	0
All	All	5549	0	5347	75	0

The all-atom clashscore is defined as the number of clashes found per 1000 atoms (including hydrogen atoms). The all-atom clashscore for this structure is 7.

All (75) close contacts within the same asymmetric unit are listed below, sorted by their clash magnitude.

Atom-1	Atom-2	Interatomic distance (Å)	Clash overlap (Å)
1:B:395:ASP:HA	1:B:595:HIS:CD2	2.31	0.66
1:A:404:LYS:HD2	1:A:688:THR:HG21	1.80	0.64
1:A:546:ASP:N	1:A:546:ASP:OD1	2.31	0.64
1:A:553:ASN:OD1	1:A:566:ARG:CZ	2.48	0.61
1:A:395:ASP:HA	1:A:595:HIS:CD2	2.35	0.61
1:A:624:ASN:HB3	1:A:628:LYS:HB2	1.81	0.61
1:A:459:THR:HA	1:A:525:GLY:O	2.01	0.60
1:B:392:LEU:HD11	1:B:394:LEU:HD21	1.84	0.59
1:A:566:ARG:HG2	1:A:581:VAL:HG21	1.83	0.59
1:A:484:ASP:O	1:A:500:ARG:HD2	2.04	0.57
4:H:2:NAG:O4	4:H:3:BMA:H2	2.04	0.57
1:A:518:ASN:C	1:A:518:ASN:OD1	2.43	0.57
1:A:575:ASP:HB3	1:A:577:THR:HG22	1.85	0.57
1:B:395:ASP:OD1	1:B:464:THR:N	2.36	0.56
1:B:346:VAL:HB	1:B:389:ALA:HA	1.87	0.55
1:A:377:THR:HG21	1:A:398:TYR:CD2	2.41	0.54
1:B:510:GLN:HB2	1:B:512:LEU:HG	1.91	0.53
1:B:566:ARG:HG2	1:B:581:VAL:HG21	1.90	0.53
4:H:2:NAG:O4	4:H:3:BMA:C2	2.57	0.53
1:A:395:ASP:OD1	1:A:463:ARG:HA	2.09	0.52

*Continued on next page...*

*Continued from previous page...*

Atom-1	Atom-2	Interatomic distance (Å)	Clash overlap (Å)
1:A:611:LEU:O	1:A:614:GLN:N	2.41	0.52
4:H:1:NAG:O3	4:H:2:NAG:O5	2.21	0.51
1:A:575:ASP:OD2	1:A:577:THR:HB	2.10	0.51
1:A:349:ALA:O	1:A:373:THR:HA	2.11	0.50
1:A:364:GLN:HE22	3:F:2:NAG:H2	1.76	0.50
1:A:493:PRO:HA	1:A:515:CYS:SG	2.52	0.50
1:A:569:PHE:O	1:A:570:ARG:NH1	2.44	0.50
1:B:518:ASN:OD1	1:B:520:LYS:HB2	2.11	0.50
1:A:553:ASN:OD1	1:A:566:ARG:NE	2.44	0.50
1:A:362:SER:HA	1:A:369:VAL:O	2.11	0.50
1:B:459:THR:OG1	1:B:466:GLY:HA3	2.13	0.49
1:A:370:THR:HG21	1:B:481:CYS:SG	2.52	0.49
1:B:523:TYR:C	1:B:528:GLY:HA3	2.33	0.48
1:A:435:ALA:O	1:A:589:LEU:N	2.41	0.48
1:B:396:GLY:O	1:B:399:ILE:HB	2.13	0.48
1:B:396:GLY:HA2	1:B:399:ILE:HD12	1.96	0.47
1:B:352:PRO:HA	1:B:355:GLN:HB2	1.97	0.47
1:A:606:HIS:O	1:A:610:VAL:HG23	2.16	0.46
1:A:364:GLN:HG3	1:A:629:PHE:HB2	1.98	0.46
1:A:346:VAL:HB	1:A:389:ALA:HA	1.98	0.45
1:A:547:THR:O	1:A:551:ASN:ND2	2.39	0.45
2:E:2:NAG:H62	2:E:3:BMA:O2	2.16	0.45
1:A:615:GLN:O	1:A:619:GLY:N	2.43	0.45
1:A:434:LEU:O	1:A:544:LYS:HA	2.15	0.45
1:A:523:TYR:HA	1:A:528:GLY:CA	2.47	0.45
1:B:434:LEU:HB2	1:B:545:ASN:OD1	2.16	0.45
1:B:401:THR:HA	1:B:681:LEU:HD21	1.98	0.45
1:B:633:LYS:HD3	1:B:633:LYS:HA	1.56	0.45
1:B:392:LEU:CD1	1:B:394:LEU:HD21	2.46	0.44
1:A:516:VAL:HG23	1:A:516:VAL:O	2.18	0.44
1:A:585:GLN:NE2	2:D:1:NAG:H81	2.33	0.44
1:B:433:TYR:CE2	1:B:592:ALA:CB	3.01	0.43
1:B:603:ARG:O	1:B:607:VAL:HG23	2.18	0.43
1:A:396:GLY:HA2	1:A:399:ILE:HD12	2.01	0.43
1:A:458:HIS:HB3	1:A:466:GLY:O	2.19	0.43
1:A:610:VAL:O	1:A:614:GLN:HG2	2.18	0.43
1:B:610:VAL:O	1:B:614:GLN:HG2	2.19	0.42
1:A:358:CYS:C	1:A:371:CYS:SG	2.97	0.42
1:B:392:LEU:O	1:B:597:VAL:HA	2.19	0.42
1:A:392:LEU:HD11	1:A:394:LEU:HD21	2.01	0.42
1:B:678:SER:HB3	1:B:681:LEU:HB2	2.00	0.42

*Continued on next page...*

Continued from previous page...

Atom-1	Atom-2	Interatomic distance (Å)	Clash overlap (Å)
1:B:451:LEU:O	1:B:454:LYS:HB2	2.20	0.41
1:B:463:ARG:HE	6:B:702:BCT:C	2.33	0.41
1:B:403:GLY:HA3	1:B:657:TYR:CG	2.55	0.41
1:B:441:LYS:HB2	1:B:570:ARG:HG2	2.02	0.41
1:B:395:ASP:OD1	1:B:463:ARG:HA	2.21	0.41
1:B:397:GLY:O	1:B:400:TYR:HB3	2.21	0.41
1:B:594:ASN:O	1:B:660:TYR:OH	2.21	0.41
1:B:624:ASN:HB3	1:B:628:LYS:HB2	2.03	0.41
1:A:344:ARG:O	1:A:344:ARG:HG2	2.21	0.41
1:B:424:ASP:O	1:B:428:ARG:N	2.54	0.40
1:B:424:ASP:OD1	1:B:425:CYS:N	2.55	0.40
1:A:384:VAL:O	1:A:600:ARG:HD2	2.21	0.40
1:A:464:THR:HA	1:A:468:ASN:HB2	2.03	0.40
1:B:625:CYS:HA	1:B:626:PRO:HA	1.93	0.40

There are no symmetry-related clashes.

## 5.3 Torsion angles [i](#)

### 5.3.1 Protein backbone [i](#)

In the following table, the Percentiles column shows the percent Ramachandran outliers of the chain as a percentile score with respect to all X-ray entries followed by that with respect to entries of similar resolution.

The Analysed column shows the number of residues for which the backbone conformation was analysed, and the total number of residues.

Mol	Chain	Analysed	Favoured	Allowed	Outliers	Percentiles	
1	A	346/348 (99%)	319 (92%)	26 (8%)	1 (0%)	41	61
1	B	346/348 (99%)	316 (91%)	30 (9%)	0	100	100
All	All	692/696 (99%)	635 (92%)	56 (8%)	1 (0%)	51	75

All (1) Ramachandran outliers are listed below:

Mol	Chain	Res	Type
1	A	635	GLU

### 5.3.2 Protein sidechains [i](#)

In the following table, the Percentiles column shows the percent sidechain outliers of the chain as a percentile score with respect to all X-ray entries followed by that with respect to entries of similar resolution.

The Analysed column shows the number of residues for which the sidechain conformation was analysed, and the total number of residues.

Mol	Chain	Analysed	Rotameric	Outliers	Percentiles
1	A	289/289 (100%)	261 (90%)	28 (10%)	<b>8</b> <b>14</b>
1	B	289/289 (100%)	252 (87%)	37 (13%)	<b>4</b> <b>6</b>
All	All	578/578 (100%)	513 (89%)	65 (11%)	<b>6</b> <b>10</b>

All (65) residues with a non-rotameric sidechain are listed below:

Mol	Chain	Res	Type
1	A	344	ARG
1	A	348	CYS
1	A	355	GLN
1	A	356	LYS
1	A	373	THR
1	A	376	THR
1	A	380	CYS
1	A	419	LYS
1	A	444	GLU
1	A	452	LYS
1	A	463	ARG
1	A	480	SER
1	A	484	ASP
1	A	498	LYS
1	A	518	ASN
1	A	546	ASP
1	A	565	LYS
1	A	566	ARG
1	A	587	CYS
1	A	591	VAL
1	A	600	ARG
1	A	623	LYS
1	A	625	CYS
1	A	635	GLU
1	A	636	THR
1	A	664	GLU
1	A	674	LYS

*Continued on next page...*

*Continued from previous page...*

<b>Mol</b>	<b>Chain</b>	<b>Res</b>	<b>Type</b>
1	A	688	THR
1	B	344	ARG
1	B	355	GLN
1	B	367	GLN
1	B	370	THR
1	B	380	CYS
1	B	416	LYS
1	B	419	LYS
1	B	421	SER
1	B	423	LEU
1	B	427	LEU
1	B	431	GLU
1	B	444	GLU
1	B	450	SER
1	B	490	SER
1	B	498	LYS
1	B	500	ARG
1	B	509	ASP
1	B	510	GLN
1	B	515	CYS
1	B	520	LYS
1	B	557	THR
1	B	562	LYS
1	B	565	LYS
1	B	568	ASP
1	B	573	CYS
1	B	575	ASP
1	B	602	ASP
1	B	609	GLN
1	B	617	LEU
1	B	623	LYS
1	B	628	LYS
1	B	633	LYS
1	B	634	SER
1	B	644	ASN
1	B	663	THR
1	B	676	SER
1	B	687	LEU

Sometimes sidechains can be flipped to improve hydrogen bonding and reduce clashes. All (7) such sidechains are listed below:

Mol	Chain	Res	Type
1	A	355	GLN
1	A	364	GLN
1	A	468	ASN
1	A	477	GLN
1	A	585	GLN
1	B	355	GLN
1	B	367	GLN

### 5.3.3 RNA [i](#)

There are no RNA molecules in this entry.

### 5.4 Non-standard residues in protein, DNA, RNA chains [i](#)

There are no non-standard protein/DNA/RNA residues in this entry.

### 5.5 Carbohydrates [i](#)

16 monosaccharides are modelled in this entry.

In the following table, the Counts columns list the number of bonds (or angles) for which Mogul statistics could be retrieved, the number of bonds (or angles) that are observed in the model and the number of bonds (or angles) that are defined in the Chemical Component Dictionary. The Link column lists molecule types, if any, to which the group is linked. The Z score for a bond length (or angle) is the number of standard deviations the observed value is removed from the expected value. A bond length (or angle) with  $|Z| > 2$  is considered an outlier worth inspection. RMSZ is the root-mean-square of all Z scores of the bond lengths (or angles).

Mol	Type	Chain	Res	Link	Bond lengths			Bond angles		
					Counts	RMSZ	# $ Z  > 2$	Counts	RMSZ	# $ Z  > 2$
2	NAG	C	1	1,2	14,14,15	0.43	0	17,19,21	2.02	2 (11%)
2	NAG	C	2	2	14,14,15	0.73	0	17,19,21	2.21	4 (23%)
2	BMA	C	3	2	11,11,12	0.60	0	15,15,17	0.88	1 (6%)
2	NAG	D	1	1,2	14,14,15	0.65	0	17,19,21	2.12	6 (35%)
2	NAG	D	2	2	14,14,15	0.57	0	17,19,21	1.18	1 (5%)
2	BMA	D	3	2	11,11,12	0.64	0	15,15,17	0.98	1 (6%)
2	NAG	E	1	1,2	14,14,15	1.43	3 (21%)	17,19,21	3.05	7 (41%)
2	NAG	E	2	2	14,14,15	1.41	3 (21%)	17,19,21	2.63	7 (41%)
2	BMA	E	3	2	11,11,12	0.93	0	15,15,17	2.66	5 (33%)
3	NAG	F	1	1,3	14,14,15	0.42	0	17,19,21	1.15	2 (11%)



Mol	Type	Chain	Res	Link	Bond lengths			Bond angles		
					Counts	RMSZ	# Z  > 2	Counts	RMSZ	# Z  > 2
3	NAG	F	2	3	14,14,15	0.56	0	17,19,21	1.62	4 (23%)
3	NAG	G	1	1,3	14,14,15	0.69	0	17,19,21	2.11	4 (23%)
3	NAG	G	2	3	13,13,15	0.74	0	16,17,21	1.63	3 (18%)
4	NAG	H	1	1,4	14,14,15	0.86	0	17,19,21	1.83	5 (29%)
4	NAG	H	2	4	14,14,15	0.60	0	17,19,21	1.51	2 (11%)
4	BMA	H	3	4	11,11,12	0.61	0	15,15,17	1.40	3 (20%)

In the following table, the Chirals column lists the number of chiral outliers, the number of chiral centers analysed, the number of these observed in the model and the number defined in the Chemical Component Dictionary. Similar counts are reported in the Torsion and Rings columns. '-' means no outliers of that kind were identified.

Mol	Type	Chain	Res	Link	Chirals	Torsions	Rings
2	NAG	C	1	1,2	-	2/6/23/26	0/1/1/1
2	NAG	C	2	2	-	2/6/23/26	0/1/1/1
2	BMA	C	3	2	-	0/2/19/22	0/1/1/1
2	NAG	D	1	1,2	-	0/6/23/26	0/1/1/1
2	NAG	D	2	2	-	2/6/23/26	0/1/1/1
2	BMA	D	3	2	-	0/2/19/22	0/1/1/1
2	NAG	E	1	1,2	-	0/6/23/26	0/1/1/1
2	NAG	E	2	2	-	0/6/23/26	0/1/1/1
2	BMA	E	3	2	-	1/2/19/22	0/1/1/1
3	NAG	F	1	1,3	-	1/6/23/26	0/1/1/1
3	NAG	F	2	3	-	0/6/23/26	0/1/1/1
3	NAG	G	1	1,3	-	0/6/23/26	0/1/1/1
3	NAG	G	2	3	-	4/5/22/26	0/1/1/1
4	NAG	H	1	1,4	-	2/6/23/26	0/1/1/1
4	NAG	H	2	4	-	2/6/23/26	0/1/1/1
4	BMA	H	3	4	-	2/2/19/22	0/1/1/1

All (6) bond length outliers are listed below:

Mol	Chain	Res	Type	Atoms	Z	Observed(Å)	Ideal(Å)
2	E	2	NAG	C1-C2	3.13	1.57	1.52
2	E	1	NAG	O4-C4	3.12	1.50	1.43
2	E	1	NAG	O5-C1	2.71	1.48	1.43
2	E	2	NAG	O5-C1	2.40	1.47	1.43
2	E	1	NAG	O5-C5	2.20	1.47	1.43
2	E	2	NAG	O4-C4	2.12	1.48	1.43

All (57) bond angle outliers are listed below:

Mol	Chain	Res	Type	Atoms	Z	Observed(°)	Ideal(°)
2	C	1	NAG	C1-O5-C5	7.08	121.78	112.19
2	C	2	NAG	C1-O5-C5	6.66	121.22	112.19
2	E	3	BMA	C1-C2-C3	6.64	117.83	109.67
2	E	1	NAG	C1-O5-C5	6.30	120.73	112.19
3	G	1	NAG	C1-O5-C5	5.88	120.16	112.19
2	E	2	NAG	C1-O5-C5	5.55	119.72	112.19
2	E	1	NAG	O5-C1-C2	-5.39	102.77	111.29
2	E	1	NAG	C3-C4-C5	-5.18	101.00	110.24
2	E	3	BMA	O5-C5-C6	4.82	114.75	107.20
2	E	2	NAG	O5-C5-C6	4.73	114.62	107.20
2	E	3	BMA	C1-O5-C5	4.71	118.58	112.19
2	D	1	NAG	C1-O5-C5	4.65	118.50	112.19
2	E	2	NAG	O5-C1-C2	-4.62	104.00	111.29
2	C	2	NAG	O4-C4-C5	4.56	120.61	109.30
2	E	1	NAG	C4-C3-C2	4.54	117.68	111.02
3	G	2	NAG	C7-N2-C2	4.16	120.68	114.57
4	H	2	NAG	C1-O5-C5	4.15	117.81	112.19
2	E	1	NAG	O5-C5-C6	3.83	113.21	107.20
3	F	2	NAG	C1-O5-C5	3.62	117.09	112.19
4	H	1	NAG	C4-C3-C2	3.53	116.19	111.02
2	D	1	NAG	C1-C2-N2	-3.46	104.58	110.49
3	F	2	NAG	O5-C1-C2	3.39	116.65	111.29
3	G	1	NAG	O5-C5-C4	3.31	118.88	110.83
4	H	1	NAG	C6-C5-C4	3.18	120.45	113.00
2	D	1	NAG	O5-C5-C6	-3.15	102.27	107.20
2	C	2	NAG	C3-C4-C5	-3.13	104.66	110.24
3	G	1	NAG	C6-C5-C4	-3.10	105.74	113.00
4	H	2	NAG	C4-C3-C2	-3.03	106.58	111.02
2	E	2	NAG	C1-C2-N2	2.98	115.58	110.49
2	D	2	NAG	C1-C2-N2	2.92	115.48	110.49
2	E	2	NAG	C6-C5-C4	-2.91	106.19	113.00
4	H	3	BMA	C1-C2-C3	2.88	113.20	109.67
2	E	1	NAG	O4-C4-C5	2.87	116.43	109.30
2	E	2	NAG	C4-C3-C2	2.80	115.12	111.02
3	G	2	NAG	O5-C5-C6	2.78	111.56	107.20
4	H	1	NAG	C1-O5-C5	-2.75	108.47	112.19
3	F	2	NAG	O5-C5-C6	2.65	111.36	107.20
2	E	2	NAG	C3-C4-C5	-2.60	105.59	110.24
4	H	1	NAG	O5-C5-C6	-2.55	103.20	107.20
4	H	3	BMA	O2-C2-C3	-2.47	105.19	110.14
2	E	3	BMA	O2-C2-C3	-2.44	105.25	110.14
2	D	1	NAG	C4-C3-C2	2.44	114.59	111.02

*Continued on next page...*

Continued from previous page...

Mol	Chain	Res	Type	Atoms	Z	Observed(°)	Ideal(°)
3	G	1	NAG	O3-C3-C4	-2.40	104.80	110.35
3	F	1	NAG	O4-C4-C3	-2.39	104.81	110.35
3	G	2	NAG	O5-C1-C2	-2.38	107.53	111.29
4	H	1	NAG	O5-C5-C4	-2.37	105.06	110.83
2	D	1	NAG	C2-N2-C7	2.37	126.28	122.90
3	F	1	NAG	C3-C4-C5	2.37	114.46	110.24
2	D	1	NAG	C3-C4-C5	2.35	114.44	110.24
2	E	1	NAG	C1-C2-N2	-2.24	106.66	110.49
2	C	3	BMA	O5-C1-C2	-2.18	107.40	110.77
2	C	1	NAG	O6-C6-C5	-2.11	104.05	111.29
2	C	2	NAG	C4-C3-C2	-2.11	107.93	111.02
4	H	3	BMA	O5-C5-C6	2.08	110.47	107.20
2	D	3	BMA	C1-C2-C3	2.08	112.22	109.67
2	E	3	BMA	C6-C5-C4	-2.05	108.20	113.00
3	F	2	NAG	C3-C4-C5	-2.03	106.62	110.24

There are no chirality outliers.

All (18) torsion outliers are listed below:

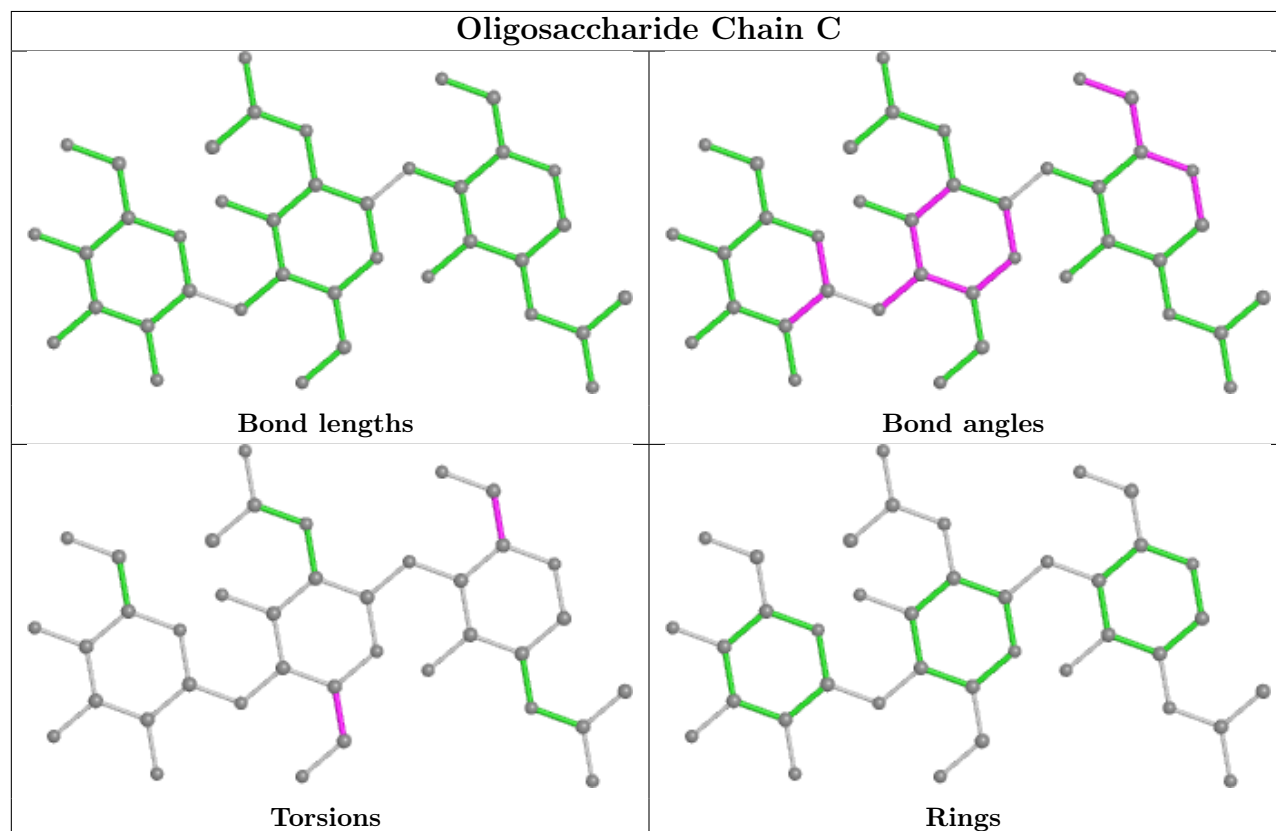
Mol	Chain	Res	Type	Atoms
4	H	3	BMA	O5-C5-C6-O6
2	C	1	NAG	O5-C5-C6-O6
4	H	3	BMA	C4-C5-C6-O6
3	G	2	NAG	O5-C5-C6-O6
2	C	2	NAG	C4-C5-C6-O6
3	G	2	NAG	C4-C5-C6-O6
3	G	2	NAG	C1-C2-N2-C7
3	G	2	NAG	C3-C2-N2-C7
4	H	1	NAG	O5-C5-C6-O6
4	H	2	NAG	C4-C5-C6-O6
2	C	2	NAG	O5-C5-C6-O6
2	C	1	NAG	C4-C5-C6-O6
3	F	1	NAG	O5-C5-C6-O6
2	D	2	NAG	C4-C5-C6-O6
4	H	1	NAG	C4-C5-C6-O6
2	E	3	BMA	O5-C5-C6-O6
4	H	2	NAG	O5-C5-C6-O6
2	D	2	NAG	O5-C5-C6-O6

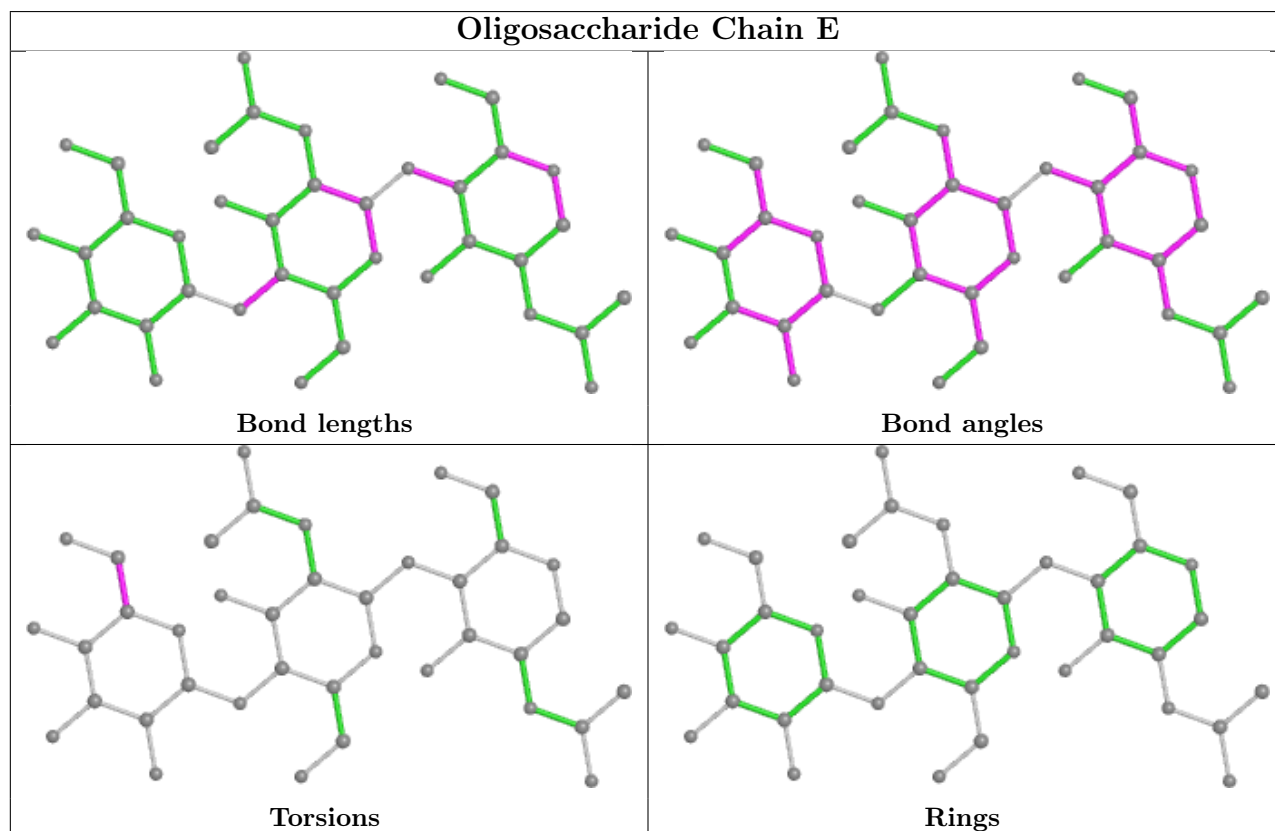
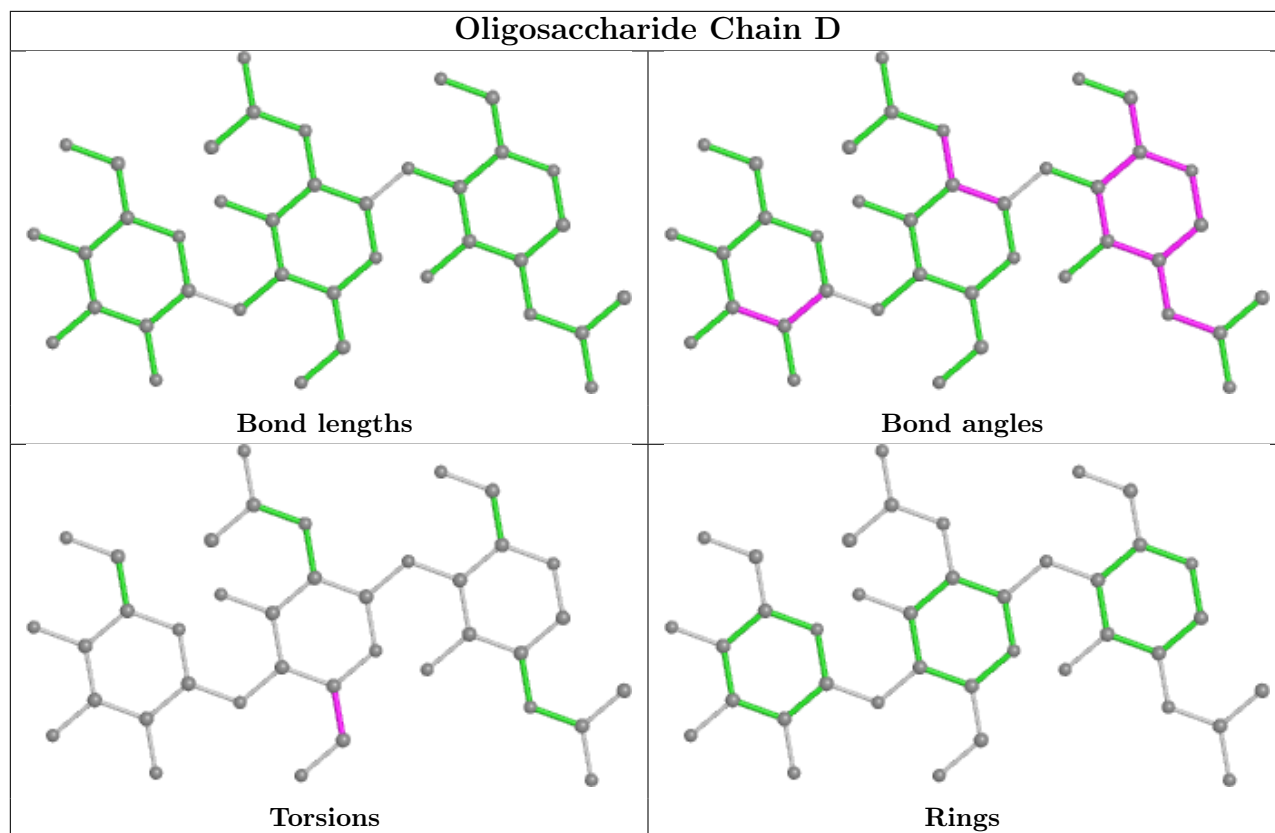
There are no ring outliers.

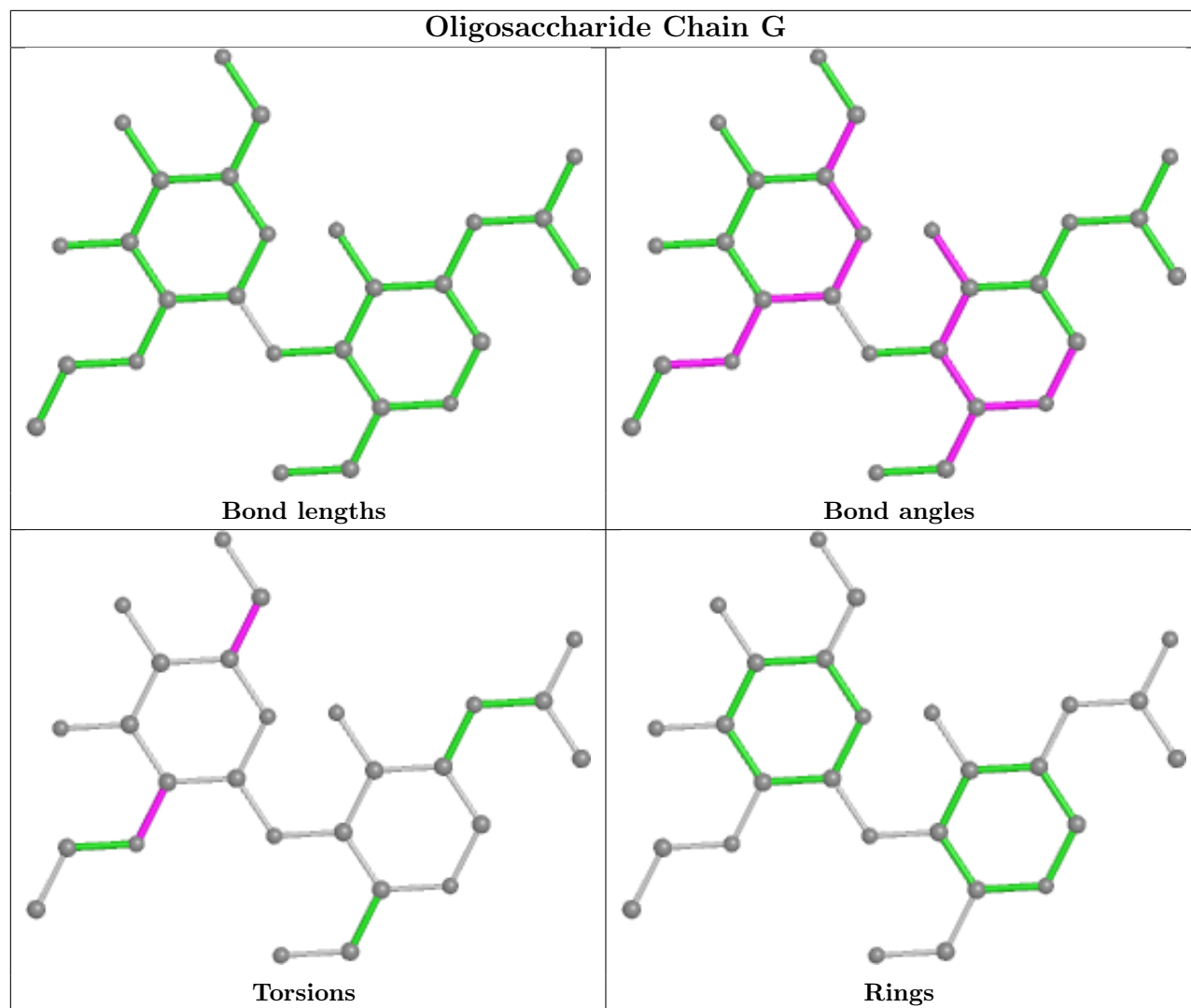
7 monomers are involved in 6 short contacts:

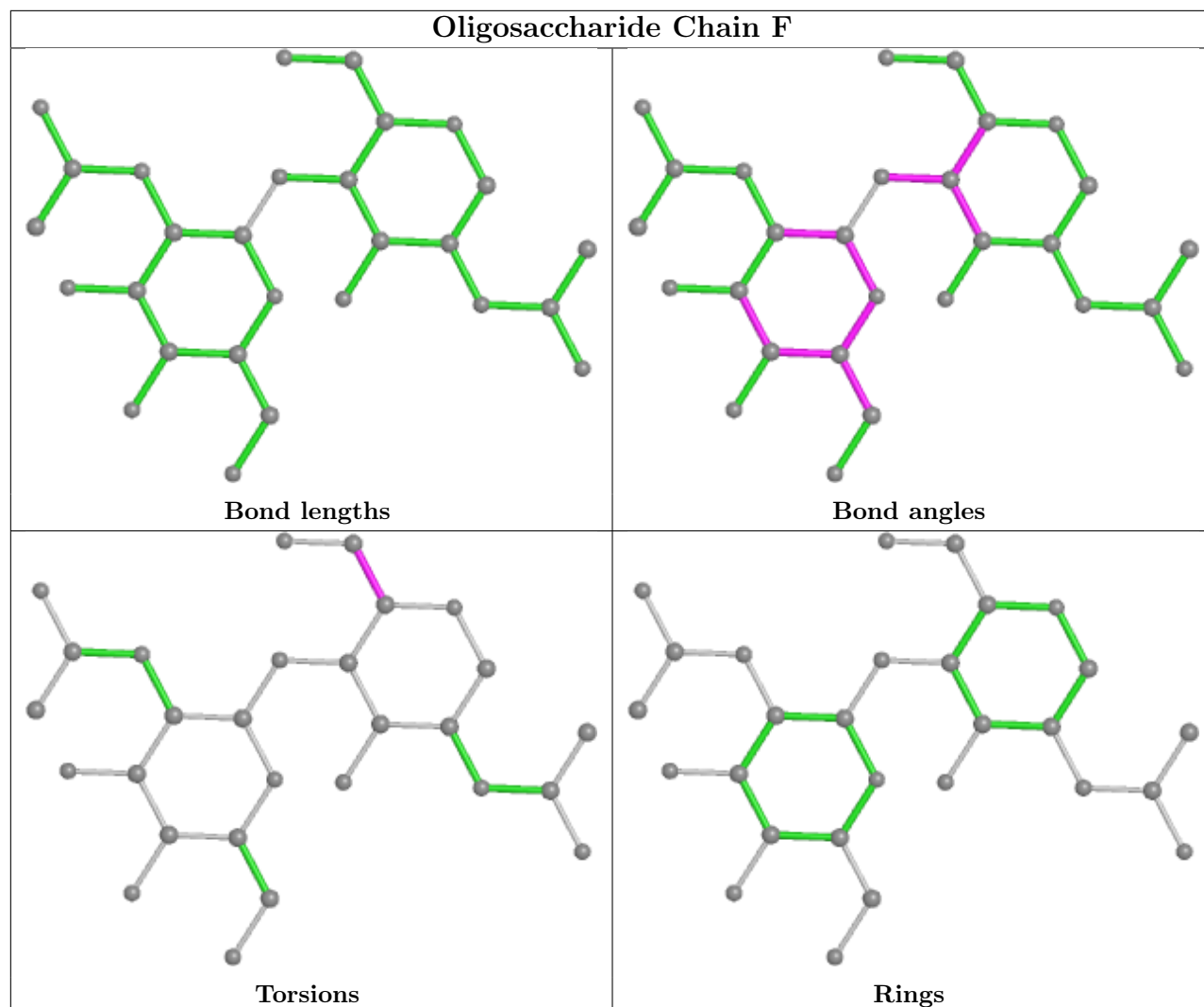
Mol	Chain	Res	Type	Clashes	Symm-Clashes
2	E	3	BMA	1	0
2	E	2	NAG	1	0
2	D	1	NAG	1	0
4	H	2	NAG	3	0
3	F	2	NAG	1	0
4	H	1	NAG	1	0
4	H	3	BMA	2	0

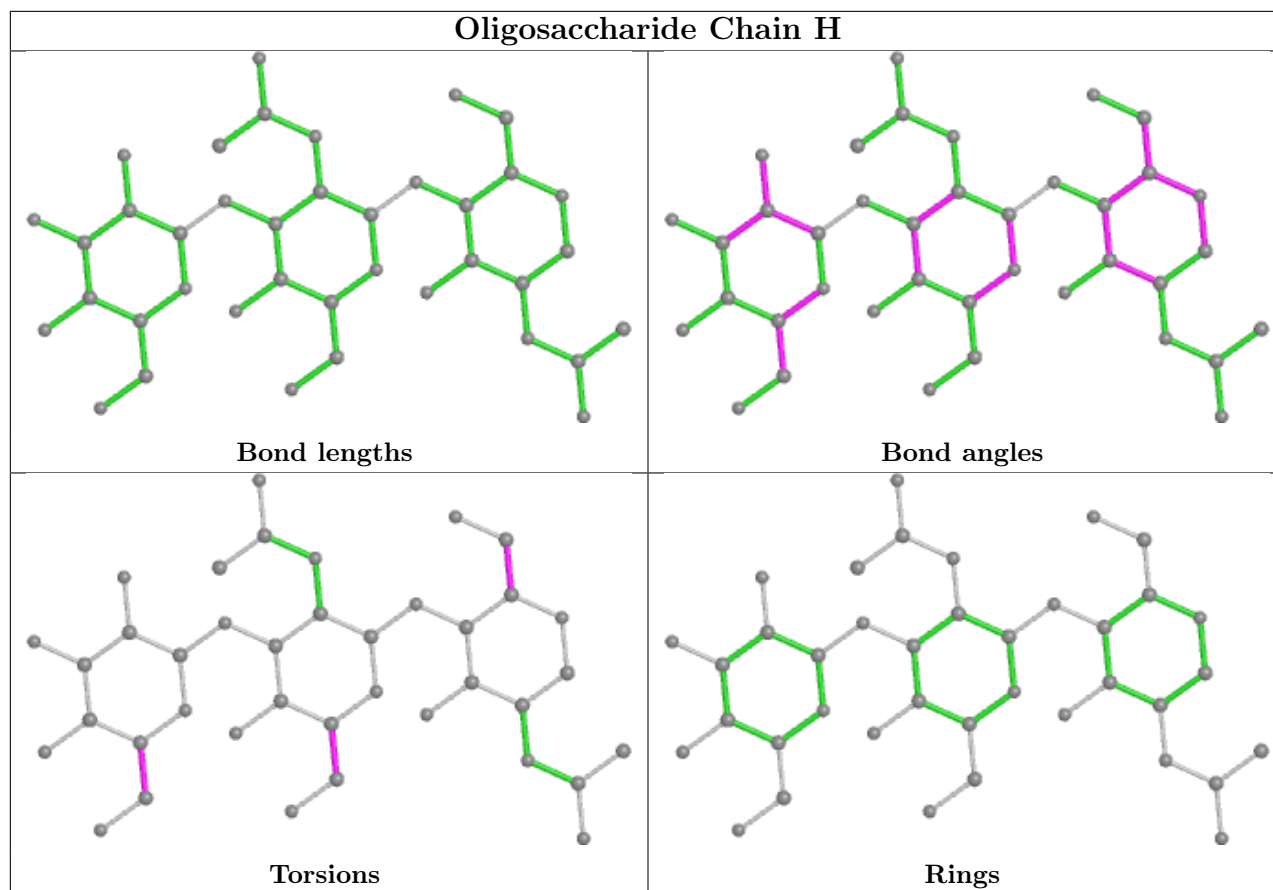
The following is a two-dimensional graphical depiction of Mogul quality analysis of bond lengths, bond angles, torsion angles, and ring geometry for oligosaccharide.











## 5.6 Ligand geometry [i](#)

Of 4 ligands modelled in this entry, 2 are monoatomic - leaving 2 for Mogul analysis.

In the following table, the Counts columns list the number of bonds (or angles) for which Mogul statistics could be retrieved, the number of bonds (or angles) that are observed in the model and the number of bonds (or angles) that are defined in the Chemical Component Dictionary. The Link column lists molecule types, if any, to which the group is linked. The Z score for a bond length (or angle) is the number of standard deviations the observed value is removed from the expected value. A bond length (or angle) with  $|Z| > 2$  is considered an outlier worth inspection. RMSZ is the root-mean-square of all Z scores of the bond lengths (or angles).

Mol	Type	Chain	Res	Link	Bond lengths			Bond angles		
					Counts	RMSZ	$\# Z  > 2$	Counts	RMSZ	$\# Z  > 2$
6	BCT	B	702	5	2,3,3	0.60	0	2,3,3	1.12	0
6	BCT	A	702	5	2,3,3	0.77	0	2,3,3	1.23	0

There are no bond length outliers.

There are no bond angle outliers.

There are no chirality outliers.

There are no torsion outliers.



There are no ring outliers.

1 monomer is involved in 1 short contact:

Mol	Chain	Res	Type	Clashes	Symm-Clashes
6	B	702	BCT	1	0

## 5.7 Other polymers [i](#)

There are no such residues in this entry.

## 5.8 Polymer linkage issues [i](#)

There are no chain breaks in this entry.

## 6 Fit of model and data

### 6.1 Protein, DNA and RNA chains

In the following table, the column labelled ‘#RSRZ> 2’ contains the number (and percentage) of RSRZ outliers, followed by percent RSRZ outliers for the chain as percentile scores relative to all X-ray entries and entries of similar resolution. The OWAB column contains the minimum, median, 95<sup>th</sup> percentile and maximum values of the occupancy-weighted average B-factor per residue. The column labelled ‘Q< 0.9’ lists the number of (and percentage) of residues with an average occupancy less than 0.9.

Mol	Chain	Analysed	<RSRZ>	#RSRZ>2	OWAB(Å <sup>2</sup> )	Q<0.9
1	A	348/348 (100%)	0.42	8 (2%) 60 67	57, 97, 142, 183	0
1	B	348/348 (100%)	0.87	56 (16%) 1 1	57, 106, 149, 215	0
All	All	696/696 (100%)	0.65	64 (9%) 9 9	57, 102, 147, 215	0

All (64) RSRZ outliers are listed below:

Mol	Chain	Res	Type	RSRZ
1	B	419	LYS	12.8
1	B	631	LEU	6.7
1	B	445	GLY	6.6
1	B	420	HIS	6.2
1	B	442	ALA	5.5
1	B	687	LEU	5.0
1	B	569	PHE	4.9
1	B	636	THR	4.6
1	B	650	LYS	4.6
1	B	434	LEU	3.9
1	B	530	PHE	3.9
1	B	423	LEU	3.9
1	B	427	LEU	3.9
1	B	621	ASN	3.8
1	B	688	THR	3.7
1	A	542	PHE	3.7
1	A	572	LEU	3.7
1	B	557	THR	3.6
1	B	620	LYS	3.4
1	B	342	TYR	3.4
1	B	448	TRP	3.3
1	B	542	PHE	3.2
1	B	654	ARG	3.2
1	B	483	PHE	3.2

*Continued on next page...*

*Continued from previous page...*

<b>Mol</b>	<b>Chain</b>	<b>Res</b>	<b>Type</b>	<b>RSRZ</b>
1	B	441	LYS	3.2
1	B	574	LEU	3.1
1	B	539	ASP	3.1
1	B	417	SER	3.0
1	B	581	VAL	3.0
1	B	617	LEU	2.9
1	A	420	HIS	2.9
1	B	345	VAL	2.9
1	B	549	TRP	2.7
1	B	566	ARG	2.7
1	B	589	LEU	2.6
1	B	560	TRP	2.6
1	B	444	GLU	2.6
1	B	421	SER	2.6
1	B	633	LYS	2.5
1	B	624	ASN	2.4
1	B	686	PHE	2.4
1	B	570	ARG	2.4
1	B	580	PRO	2.4
1	B	527	THR	2.4
1	B	582	THR	2.3
1	B	607	VAL	2.3
1	B	550	GLU	2.3
1	B	611	LEU	2.3
1	A	648	LEU	2.3
1	B	572	LEU	2.3
1	A	451	LEU	2.3
1	B	437	ALA	2.3
1	B	552	THR	2.2
1	A	631	LEU	2.2
1	B	411	LEU	2.2
1	B	418	SER	2.2
1	A	465	ALA	2.2
1	B	583	GLU	2.1
1	B	648	LEU	2.1
1	B	426	VAL	2.1
1	B	416	LYS	2.1
1	B	446	LEU	2.1
1	A	410	VAL	2.1
1	B	422	SER	2.0

## 6.2 Non-standard residues in protein, DNA, RNA chains [i](#)

There are no non-standard protein/DNA/RNA residues in this entry.

## 6.3 Carbohydrates [i](#)

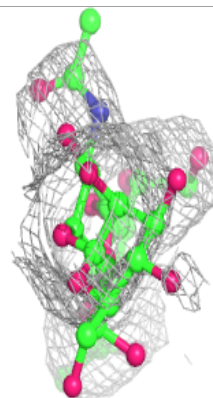
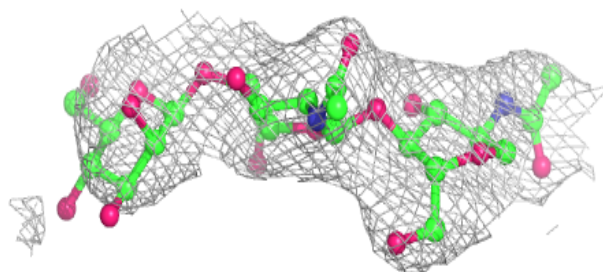
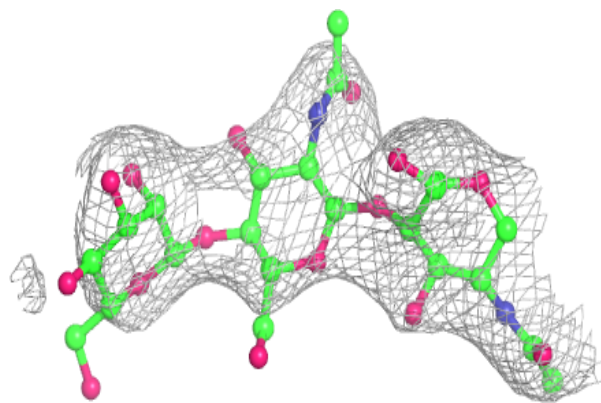
In the following table, the Atoms column lists the number of modelled atoms in the group and the number defined in the chemical component dictionary. The B-factors column lists the minimum, median, 95<sup>th</sup> percentile and maximum values of B factors of atoms in the group. The column labelled 'Q< 0.9' lists the number of atoms with occupancy less than 0.9.

Mol	Type	Chain	Res	Atoms	RSCC	RSR	B-factors(Å <sup>2</sup> )	Q<0.9
2	BMA	D	3	11/12	0.60	0.31	145,164,175,175	0
2	BMA	C	3	11/12	0.71	0.29	143,165,177,177	0
2	BMA	E	3	11/12	0.77	0.17	156,172,178,193	0
4	BMA	H	3	11/12	0.77	0.18	143,158,164,166	0
4	NAG	H	1	14/15	0.83	0.28	140,149,181,203	0
3	NAG	G	2	13/15	0.83	0.43	164,194,219,229	0
3	NAG	G	1	14/15	0.85	0.33	163,176,208,219	0
3	NAG	F	2	14/15	0.87	0.29	154,166,184,187	0
2	NAG	E	1	14/15	0.88	0.18	100,109,124,129	0
2	NAG	E	2	14/15	0.89	0.23	111,126,138,156	0
2	NAG	C	2	14/15	0.91	0.18	123,157,165,171	0
3	NAG	F	1	14/15	0.92	0.11	104,137,154,155	0
4	NAG	H	2	14/15	0.92	0.29	139,157,165,181	0
2	NAG	D	2	14/15	0.92	0.16	110,129,146,166	0
2	NAG	D	1	14/15	0.93	0.15	96,123,130,131	0
2	NAG	C	1	14/15	0.96	0.16	94,106,111,114	0

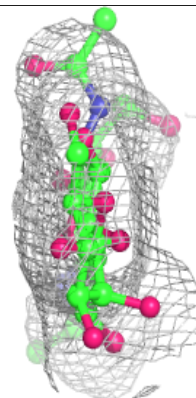
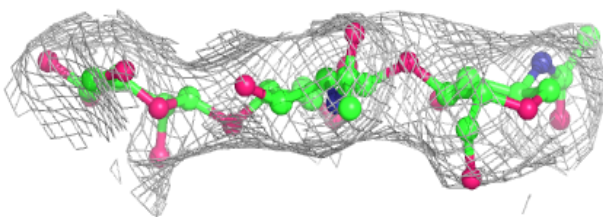
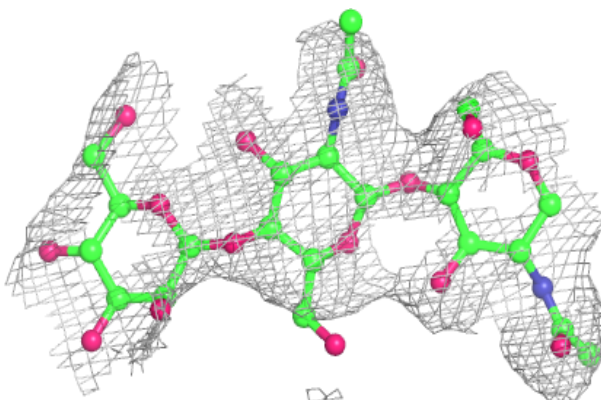
The following is a graphical depiction of the model fit to experimental electron density for oligosaccharide. Each fit is shown from different orientation to approximate a three-dimensional view.

**Electron density around Chain C:**

$2mF_o-DF_c$  (at 0.7 rmsd) in gray  
 $mF_o-DF_c$  (at 3 rmsd) in purple (negative)  
and green (positive)

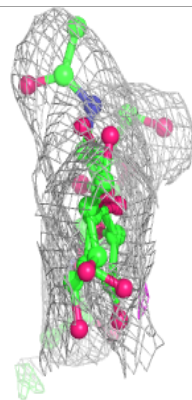
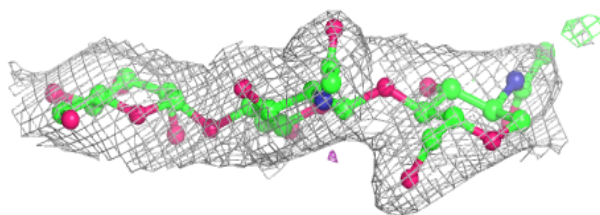
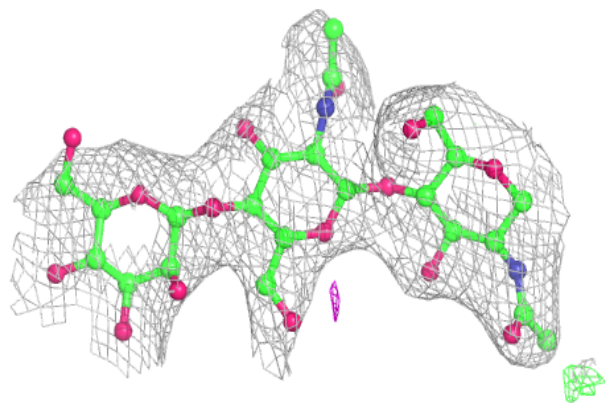
**Electron density around Chain D:**

$2mF_o-DF_c$  (at 0.7 rmsd) in gray  
 $mF_o-DF_c$  (at 3 rmsd) in purple (negative)  
and green (positive)



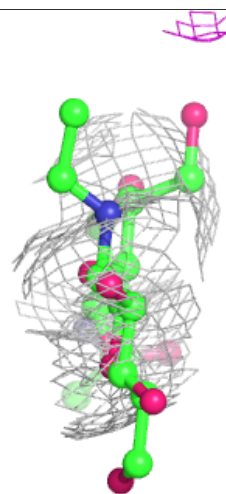
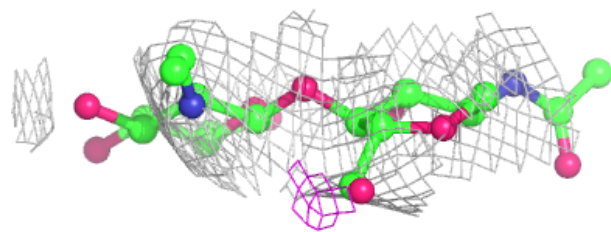
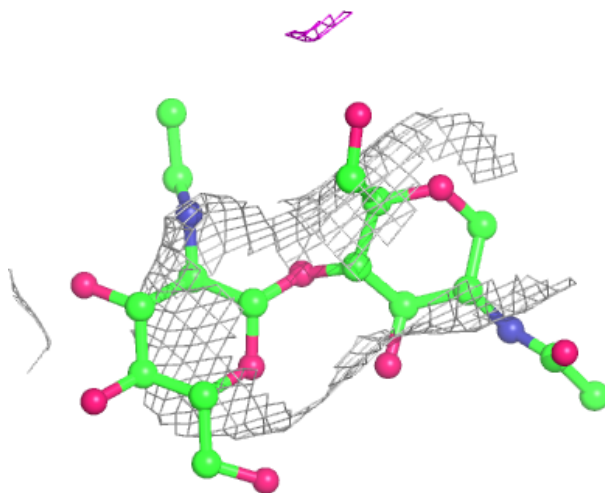
**Electron density around Chain E:**

$2mF_o-DF_c$  (at 0.7 rmsd) in gray  
 $mF_o-DF_c$  (at 3 rmsd) in purple (negative)  
and green (positive)



**Electron density around Chain G:**

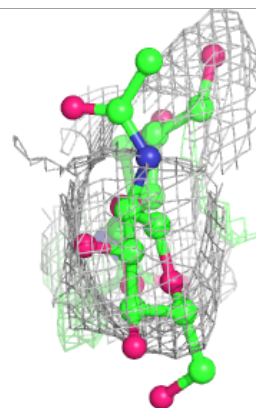
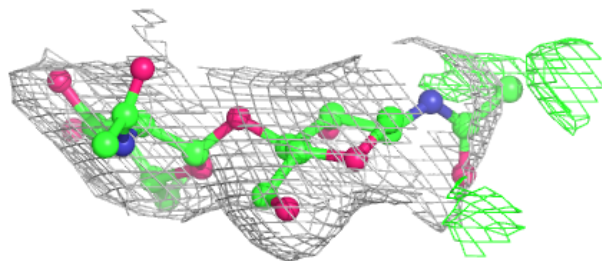
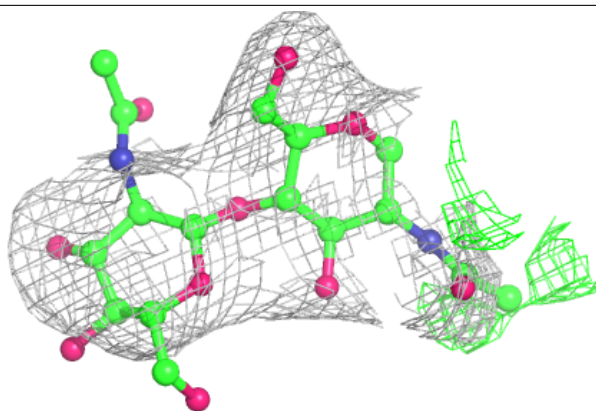
$2mF_o-DF_c$  (at 0.7 rmsd) in gray  
 $mF_o-DF_c$  (at 3 rmsd) in purple (negative)  
and green (positive)



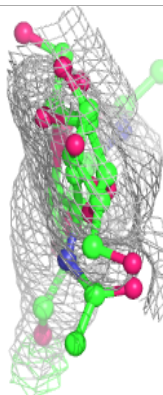
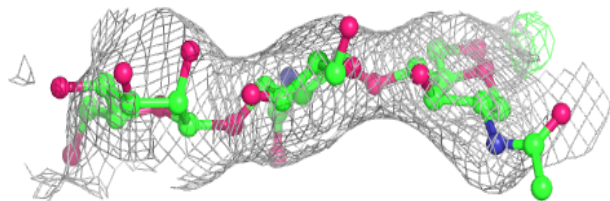
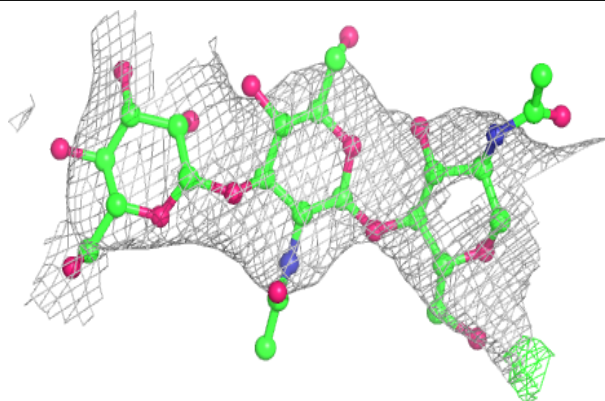


**Electron density around Chain F:**

$2mF_o-DF_c$  (at 0.7 rmsd) in gray  
 $mF_o-DF_c$  (at 3 rmsd) in purple (negative)  
and green (positive)

**Electron density around Chain H:**

$2mF_o-DF_c$  (at 0.7 rmsd) in gray  
 $mF_o-DF_c$  (at 3 rmsd) in purple (negative)  
and green (positive)





## 6.4 Ligands [i](#)

In the following table, the Atoms column lists the number of modelled atoms in the group and the number defined in the chemical component dictionary. The B-factors column lists the minimum, median, 95<sup>th</sup> percentile and maximum values of B factors of atoms in the group. The column labelled 'Q< 0.9' lists the number of atoms with occupancy less than 0.9.

Mol	Type	Chain	Res	Atoms	RSCC	RSR	B-factors(Å <sup>2</sup> )	Q<0.9
5	FE	B	701	1/1	0.96	0.12	86,86,86,86	0
5	FE	A	701	1/1	0.98	0.15	99,99,99,99	0
6	BCT	A	702	4/4	0.98	0.13	58,64,79,83	0
6	BCT	B	702	4/4	0.99	0.11	46,55,57,61	0

## 6.5 Other polymers [i](#)

There are no such residues in this entry.