



# Full wwPDB X-ray Structure Validation Report ⓘ

May 25, 2020 – 03:17 pm BST

PDB ID : 6EUN  
Title : Crystal structure of Neisseria meningitidis vaccine antigen NadA variant 3  
Authors : Dello Iacono, L.; Liguori, A.; Malito, E.; Bottomley, M.J.  
Deposited on : 2017-10-30  
Resolution : 2.45 Å(reported)

This is a Full wwPDB X-ray Structure Validation Report for a publicly released PDB entry.

We welcome your comments at [validation@mail.wwpdb.org](mailto:validation@mail.wwpdb.org)

A user guide is available at

<https://www.wwpdb.org/validation/2017/XrayValidationReportHelp>

with specific help available everywhere you see the ⓘ symbol.

---

The following versions of software and data (see [references ⓘ](#)) were used in the production of this report:

MolProbity : 4.02b-467  
Mogul : 1.8.5 (274361), CSD as541be (2020)  
Xtriage (Phenix) : 1.13  
EDS : 2.11  
buster-report : 1.1.7 (2018)  
Percentile statistics : 20191225.v01 (using entries in the PDB archive December 25th 2019)  
Refmac : 5.8.0158  
CCP4 : 7.0.044 (Gargrove)  
Ideal geometry (proteins) : Engh & Huber (2001)  
Ideal geometry (DNA, RNA) : Parkinson et al. (1996)  
Validation Pipeline (wwPDB-VP) : 2.11

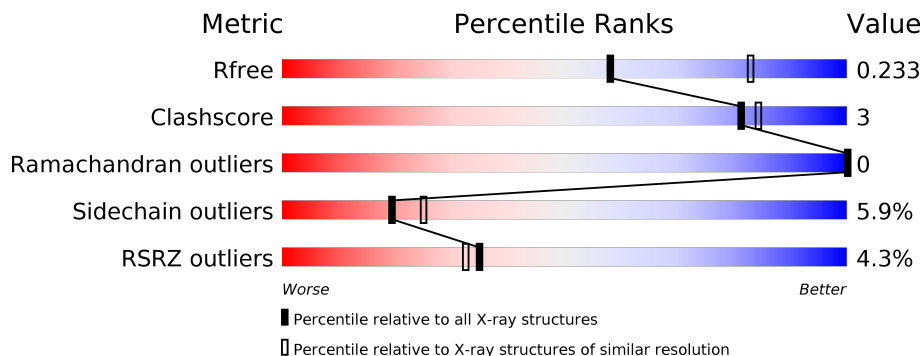
# 1 Overall quality at a glance i

The following experimental techniques were used to determine the structure:

*X-RAY DIFFRACTION*

The reported resolution of this entry is 2.45 Å.

Percentile scores (ranging between 0-100) for global validation metrics of the entry are shown in the following graphic. The table shows the number of entries on which the scores are based.



Metric	Whole archive (#Entries)	Similar resolution (#Entries, resolution range(Å))
$R_{free}$	130704	1544 (2.48-2.44)
Clashscore	141614	1613 (2.48-2.44)
Ramachandran outliers	138981	1598 (2.48-2.44)
Sidechain outliers	138945	1598 (2.48-2.44)
RSRZ outliers	127900	1523 (2.48-2.44)

The table below summarises the geometric issues observed across the polymeric chains and their fit to the electron density. The red, orange, yellow and green segments on the lower bar indicate the fraction of residues that contain outliers for  $\geq 3$ , 2, 1 and 0 types of geometric quality criteria respectively. A grey segment represents the fraction of residues that are not modelled. The numeric value for each fraction is indicated below the corresponding segment, with a dot representing fractions  $\leq 5\%$ . The upper red bar (where present) indicates the fraction of residues that have poor fit to the electron density. The numeric value is given above the bar.

Mol	Chain	Length	Quality of chain
1	A	156	<div style="display: flex; align-items: center;"> <div style="width: 3%; height: 10px; background-color: red; margin-right: 5px;"></div> <div style="width: 86%; height: 10px; background-color: green; margin-right: 5px;"></div> <div style="width: 8%; height: 10px; background-color: yellow; margin-right: 5px;"></div> <div style="width: 6%; height: 10px; background-color: grey;"></div> </div> <p style="text-align: center; margin-top: 5px;">3%      86%      8%      6%</p>
1	B	156	<div style="display: flex; align-items: center;"> <div style="width: 4%; height: 10px; background-color: red; margin-right: 5px;"></div> <div style="width: 83%; height: 10px; background-color: green; margin-right: 5px;"></div> <div style="width: 10%; height: 10px; background-color: yellow; margin-right: 5px;"></div> <div style="width: 7%; height: 10px; background-color: grey;"></div> </div> <p style="text-align: center; margin-top: 5px;">4%      83%      10%      7%</p>
1	C	156	<div style="display: flex; align-items: center;"> <div style="width: 5%; height: 10px; background-color: red; margin-right: 5px;"></div> <div style="width: 85%; height: 10px; background-color: green; margin-right: 5px;"></div> <div style="width: 8%; height: 10px; background-color: yellow; margin-right: 5px;"></div> <div style="width: 7%; height: 10px; background-color: grey;"></div> </div> <p style="text-align: center; margin-top: 5px;">5%      85%      8%      7%</p>

The following table lists non-polymeric compounds, carbohydrate monomers and non-standard residues in protein, DNA, RNA chains that are outliers for geometric or electron-density-fit criteria:

Mol	Type	Chain	Res	Chirality	Geometry	Clashes	Electron density
8	PEG	A	210	-	-	-	X

## 2 Entry composition i

There are 10 unique types of molecules in this entry. The entry contains 3472 atoms, of which 0 are hydrogens and 0 are deuteriums.

In the tables below, the ZeroOcc column contains the number of atoms modelled with zero occupancy, the AltConf column contains the number of residues with at least one atom in alternate conformation and the Trace column contains the number of residues modelled with at most 2 atoms.

- Molecule 1 is a protein called Adhesin.

Mol	Chain	Residues	Atoms				ZeroOcc	AltConf	Trace
			Total	C	N	O			
1	A	147	1095	674	181	240	0	0	0
1	B	145	1076	662	176	238	0	0	0
1	C	145	1076	662	176	238	0	0	0

There are 27 discrepancies between the modelled and reference sequences:

Chain	Residue	Modelled	Actual	Comment	Reference
A	171	ALA	-	expression tag	UNP A0ELI3
A	172	SER	-	expression tag	UNP A0ELI3
A	173	LYS	-	expression tag	UNP A0ELI3
A	174	HIS	-	expression tag	UNP A0ELI3
A	175	HIS	-	expression tag	UNP A0ELI3
A	176	HIS	-	expression tag	UNP A0ELI3
A	177	HIS	-	expression tag	UNP A0ELI3
A	178	HIS	-	expression tag	UNP A0ELI3
A	179	HIS	-	expression tag	UNP A0ELI3
B	171	ALA	-	expression tag	UNP A0ELI3
B	172	SER	-	expression tag	UNP A0ELI3
B	173	LYS	-	expression tag	UNP A0ELI3
B	174	HIS	-	expression tag	UNP A0ELI3
B	175	HIS	-	expression tag	UNP A0ELI3
B	176	HIS	-	expression tag	UNP A0ELI3
B	177	HIS	-	expression tag	UNP A0ELI3
B	178	HIS	-	expression tag	UNP A0ELI3
B	179	HIS	-	expression tag	UNP A0ELI3
C	171	ALA	-	expression tag	UNP A0ELI3
C	172	SER	-	expression tag	UNP A0ELI3
C	173	LYS	-	expression tag	UNP A0ELI3
C	174	HIS	-	expression tag	UNP A0ELI3
C	175	HIS	-	expression tag	UNP A0ELI3

*Continued on next page...*

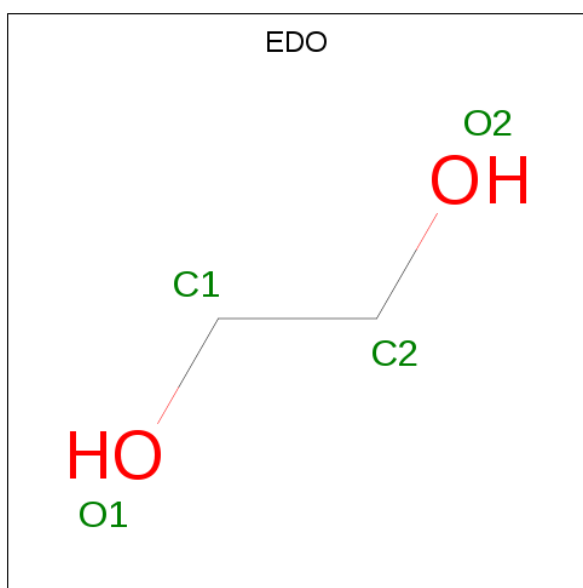
Continued from previous page...

Chain	Residue	Modelled	Actual	Comment	Reference
C	176	HIS	-	expression tag	UNP A0ELI3
C	177	HIS	-	expression tag	UNP A0ELI3
C	178	HIS	-	expression tag	UNP A0ELI3
C	179	HIS	-	expression tag	UNP A0ELI3

- Molecule 2 is CHLORIDE ION (three-letter code: CL) (formula: Cl).

Mol	Chain	Residues	Atoms	ZeroOcc	AltConf
2	A	1	Total Cl 1 1	0	0

- Molecule 3 is 1,2-ETHANEDIOL (three-letter code: EDO) (formula: C<sub>2</sub>H<sub>6</sub>O<sub>2</sub>).



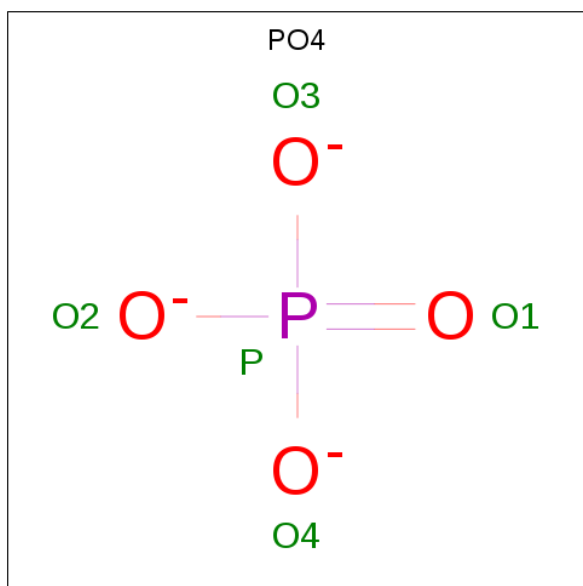
Mol	Chain	Residues	Atoms	ZeroOcc	AltConf
3	A	1	Total C O 4 2 2	0	0
3	A	1	Total C O 4 2 2	0	0
3	B	1	Total C O 4 2 2	0	0
3	B	1	Total C O 4 2 2	0	0
3	B	1	Total C O 4 2 2	0	0
3	B	1	Total C O 4 2 2	0	0

Continued on next page...

Continued from previous page...

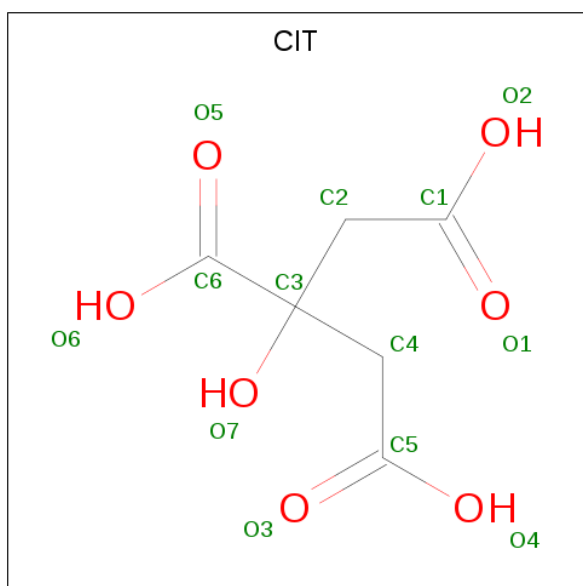
Mol	Chain	Residues	Atoms	ZeroOcc	AltConf
3	B	1	Total C O 4 2 2	0	0
3	B	1	Total C O 4 2 2	0	0
3	B	1	Total C O 4 2 2	0	0
3	B	1	Total C O 4 2 2	0	0
3	C	1	Total C O 4 2 2	0	0
3	C	1	Total C O 4 2 2	0	0
3	C	1	Total C O 4 2 2	0	0

- Molecule 4 is PHOSPHATE ION (three-letter code: PO4) (formula: O<sub>4</sub>P).



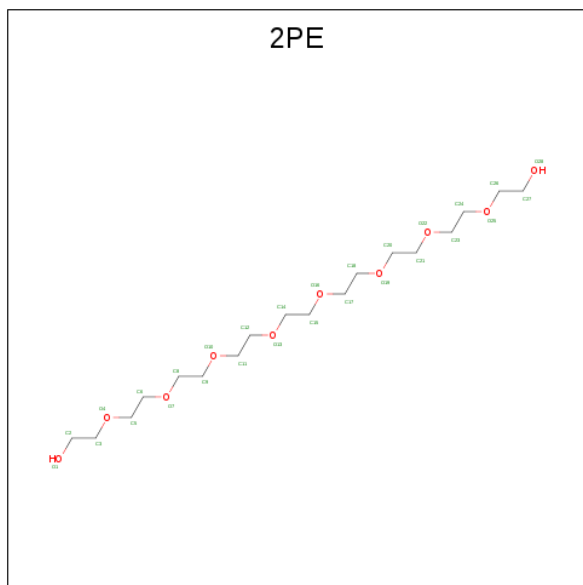
Mol	Chain	Residues	Atoms	ZeroOcc	AltConf
4	A	1	Total O P 5 4 1	0	0
4	A	1	Total O P 5 4 1	0	0
4	B	1	Total O P 5 4 1	0	0
4	C	1	Total O P 5 4 1	0	0

- Molecule 5 is CITRIC ACID (three-letter code: CIT) (formula:  $C_6H_8O_7$ ).



Mol	Chain	Residues	Atoms			ZeroOcc	AltConf
5	A	1	Total	C	O	0	0
			13	6	7		

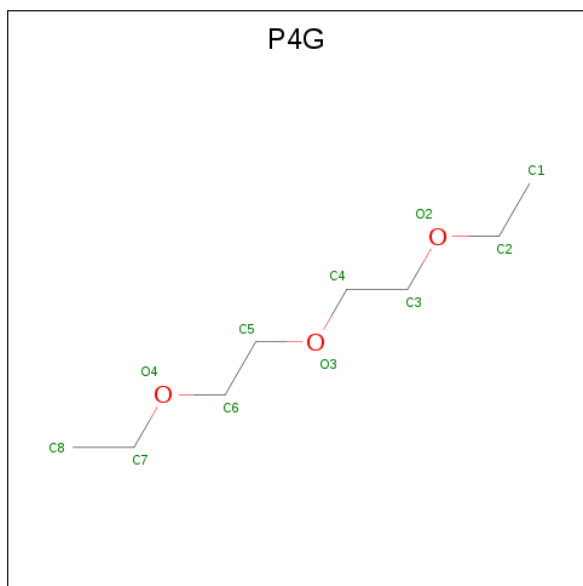
- Molecule 6 is NONAETHYLENE GLYCOL (three-letter code: 2PE) (formula:  $C_{18}H_{38}O_{10}$ ).



Mol	Chain	Residues	Atoms			ZeroOcc	AltConf
6	A	1	Total	C	O	0	0
			28	18	10		

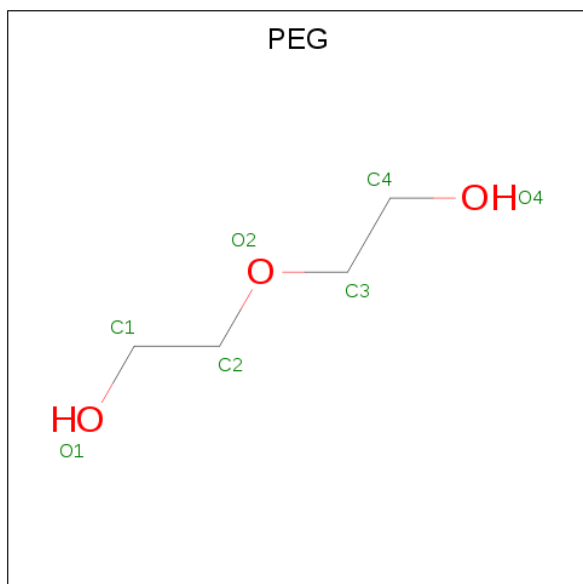
- Molecule 7 is 1-ETHOXY-2-(2-ETHOXYETHOXY)ETHANE (three-letter code: P4G)

(formula: C<sub>8</sub>H<sub>18</sub>O<sub>3</sub>).



Mol	Chain	Residues	Atoms			ZeroOcc	AltConf
7	A	1	Total	C	O	0	0
			11	8	3		
7	B	1	Total	C	O	0	0
			11	8	3		

- Molecule 8 is DI(HYDROXYETHYL)ETHER (three-letter code: PEG) (formula: C<sub>4</sub>H<sub>10</sub>O<sub>3</sub>).



Mol	Chain	Residues	Atoms			ZeroOcc	AltConf
8	A	1	Total	C	O	0	0
			7	4	3		

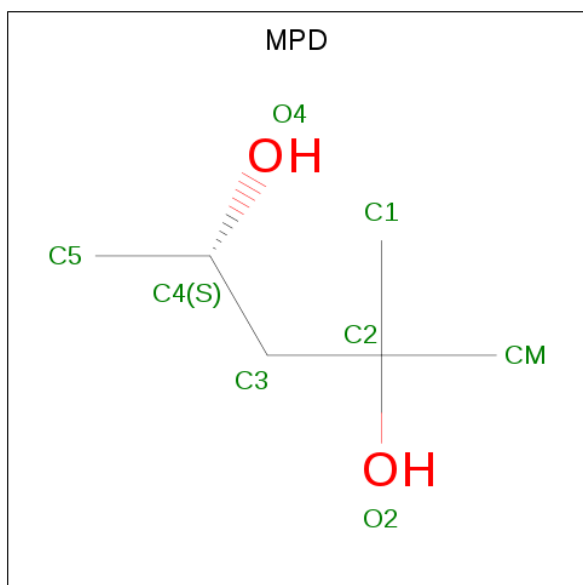
*Continued on next page...*



Continued from previous page...

Mol	Chain	Residues	Atoms			ZeroOcc	AltConf
8	A	1	Total	C	O	0	0
			7	4	3		
8	C	1	Total	C	O	0	0
			7	4	3		

- Molecule 9 is (4S)-2-METHYL-2,4-PENTANEDIOL (three-letter code: MPD) (formula:  $C_6H_{14}O_2$ ).



Mol	Chain	Residues	Atoms			ZeroOcc	AltConf
9	B	1	Total	C	O	0	0
			8	6	2		
9	C	1	Total	C	O	0	0
			8	6	2		

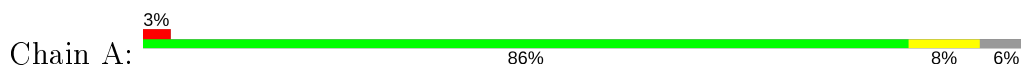
- Molecule 10 is water.

Mol	Chain	Residues	Atoms		ZeroOcc	AltConf
10	A	17	Total	O	0	0
			17	17		
10	B	15	Total	O	0	0
			15	15		
10	C	20	Total	O	0	0
			20	20		

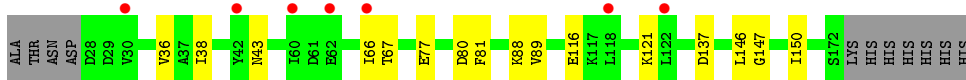
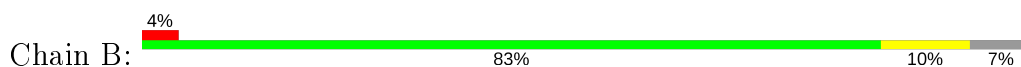
### 3 Residue-property plots [i](#)

These plots are drawn for all protein, RNA and DNA chains in the entry. The first graphic for a chain summarises the proportions of the various outlier classes displayed in the second graphic. The second graphic shows the sequence view annotated by issues in geometry and electron density. Residues are color-coded according to the number of geometric quality criteria for which they contain at least one outlier: green = 0, yellow = 1, orange = 2 and red = 3 or more. A red dot above a residue indicates a poor fit to the electron density ( $RSRZ > 2$ ). Stretches of 2 or more consecutive residues without any outlier are shown as a green connector. Residues present in the sample, but not in the model, are shown in grey.

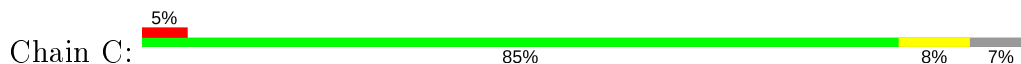
- Molecule 1: Adhesin



- Molecule 1: Adhesin



- Molecule 1: Adhesin



## 4 Data and refinement statistics i

Property	Value	Source
Space group	C 1 2 1	Depositor
Cell constants a, b, c, $\alpha$ , $\beta$ , $\gamma$	69.76Å 39.78Å 255.49Å 90.00° 95.25° 90.00°	Depositor
Resolution (Å)	34.84 - 2.45 34.84 - 2.45	Depositor EDS
% Data completeness (in resolution range)	89.4 (34.84-2.45) 87.6 (34.84-2.45)	Depositor EDS
$R_{merge}$	0.05	Depositor
$R_{sym}$	(Not available)	Depositor
$\langle I/\sigma(I) \rangle$ <sup>1</sup>	2.77 (at 2.45Å)	Xtrriage
Refinement program	BUSTER 2.10.2	Depositor
R, $R_{free}$	0.199 , 0.224 0.209 , 0.233	Depositor DCC
$R_{free}$ test set	1141 reflections (4.85%)	wwPDB-VP
Wilson B-factor (Å <sup>2</sup> )	50.5	Xtrriage
Anisotropy	0.320	Xtrriage
Bulk solvent $k_{sol}$ (e/Å <sup>3</sup> ), $B_{sol}$ (Å <sup>2</sup> )	0.30 , 62.1	EDS
L-test for twinning <sup>2</sup>	$\langle  L  \rangle = 0.51$ , $\langle L^2 \rangle = 0.34$	Xtrriage
Estimated twinning fraction	0.447 for $1/2^*h-3/2^*k,-1/2^*h-1/2^*k,-1/2^*h+1/2^*k-l$ 0.447 for $1/2^*h+3/2^*k,1/2^*h-1/2^*k,-1/2^*h-1/2^*k-l$	Xtrriage
$F_o, F_c$ correlation	0.96	EDS
Total number of atoms	3472	wwPDB-VP
Average B, all atoms (Å <sup>2</sup> )	88.0	wwPDB-VP

Xtrriage's analysis on translational NCS is as follows: *The analyses of the Patterson function reveals a significant off-origin peak that is 20.29 % of the origin peak, indicating pseudo-translational symmetry. The chance of finding a peak of this or larger height randomly in a structure without pseudo-translational symmetry is equal to 8.9786e-03. The detected translational NCS is most likely also responsible for the elevated intensity ratio.*

<sup>1</sup>Intensities estimated from amplitudes.

<sup>2</sup>Theoretical values of  $\langle |L| \rangle$ ,  $\langle L^2 \rangle$  for acentric reflections are 0.5, 0.333 respectively for untwinned datasets, and 0.375, 0.2 for perfectly twinned datasets.

## 5 Model quality

### 5.1 Standard geometry

Bond lengths and bond angles in the following residue types are not validated in this section: MPD, CL, P4G, PO4, EDO, 2PE, CIT, PEG

The Z score for a bond length (or angle) is the number of standard deviations the observed value is removed from the expected value. A bond length (or angle) with  $|Z| > 5$  is considered an outlier worth inspection. RMSZ is the root-mean-square of all Z scores of the bond lengths (or angles).

Mol	Chain	Bond lengths		Bond angles	
		RMSZ	# Z  >5	RMSZ	# Z  >5
1	A	0.49	0/1100	0.60	0/1487
1	B	0.47	0/1080	0.60	0/1461
1	C	0.50	0/1080	0.64	0/1461
All	All	0.49	0/3260	0.61	0/4409

There are no bond length outliers.

There are no bond angle outliers.

There are no chirality outliers.

There are no planarity outliers.

### 5.2 Too-close contacts

In the following table, the Non-H and H(model) columns list the number of non-hydrogen atoms and hydrogen atoms in the chain respectively. The H(added) column lists the number of hydrogen atoms added and optimized by MolProbity. The Clashes column lists the number of clashes within the asymmetric unit, whereas Symm-Clashes lists symmetry related clashes.

Mol	Chain	Non-H	H(model)	H(added)	Clashes	Symm-Clashes
1	A	1095	0	1094	5	0
1	B	1076	0	1074	8	0
1	C	1076	0	1074	5	0
2	A	1	0	0	0	0
3	A	8	0	12	0	0
3	B	32	0	48	0	0
3	C	12	0	18	0	0
4	A	10	0	0	0	0
4	B	5	0	0	0	0
4	C	5	0	0	0	0

*Continued on next page...*

Continued from previous page...

Mol	Chain	Non-H	H(model)	H(added)	Clashes	Symm-Clashes
5	A	13	0	5	0	0
6	A	28	0	38	2	0
7	A	11	0	18	0	0
7	B	11	0	18	3	0
8	A	14	0	20	0	0
8	C	7	0	10	0	0
9	B	8	0	14	2	0
9	C	8	0	14	0	0
10	A	17	0	0	0	0
10	B	15	0	0	0	0
10	C	20	0	0	2	0
All	All	3472	0	3457	18	0

The all-atom clashscore is defined as the number of clashes found per 1000 atoms (including hydrogen atoms). The all-atom clashscore for this structure is 3.

All (18) close contacts within the same asymmetric unit are listed below, sorted by their clash magnitude.

Atom-1	Atom-2	Interatomic distance (Å)	Clash overlap (Å)
7:B:211:P4G:H83	1:C:149:ASN:HD22	1.17	1.07
7:B:211:P4G:H83	1:C:149:ASN:ND2	1.96	0.80
9:B:210:MPD:H13	10:C:306:HOH:O	2.05	0.56
1:B:81:PHE:HB3	1:B:89:VAL:HG21	1.95	0.48
1:B:147:GLY:HA3	9:B:210:MPD:H31	1.97	0.47
1:A:81:PHE:HB3	1:A:89:VAL:HG21	1.97	0.47
1:C:81:PHE:HB3	1:C:89:VAL:HG21	1.97	0.47
6:A:207:2PE:H232	6:A:207:2PE:H202	1.62	0.46
1:A:38:ILE:HD11	1:B:36:VAL:HB	1.98	0.46
1:B:36:VAL:HG22	1:B:66:ILE:HD11	1.99	0.45
7:B:211:P4G:H81	10:C:306:HOH:O	2.16	0.44
1:A:150:ILE:HD13	1:B:150:ILE:HD11	2.00	0.43
1:B:146:LEU:HG	1:B:150:ILE:HD11	2.02	0.42
1:A:36:VAL:HG22	1:A:66:ILE:HD11	2.01	0.42
1:A:154:ALA:O	1:A:158:LYS:HG3	2.20	0.42
1:C:36:VAL:HG22	1:C:66:ILE:HD11	2.01	0.41
6:A:207:2PE:H172	1:B:146:LEU:HA	2.03	0.40
1:B:38:ILE:HD11	1:C:36:VAL:HB	2.04	0.40

There are no symmetry-related clashes.

## 5.3 Torsion angles [i](#)

### 5.3.1 Protein backbone [i](#)

In the following table, the Percentiles column shows the percent Ramachandran outliers of the chain as a percentile score with respect to all X-ray entries followed by that with respect to entries of similar resolution.

The Analysed column shows the number of residues for which the backbone conformation was analysed, and the total number of residues.

Mol	Chain	Analysed	Favoured	Allowed	Outliers	Percentiles	
1	A	145/156 (93%)	144 (99%)	1 (1%)	0	100	100
1	B	143/156 (92%)	142 (99%)	1 (1%)	0	100	100
1	C	143/156 (92%)	142 (99%)	1 (1%)	0	100	100
All	All	431/468 (92%)	428 (99%)	3 (1%)	0	100	100

There are no Ramachandran outliers to report.

### 5.3.2 Protein sidechains [i](#)

In the following table, the Percentiles column shows the percent sidechain outliers of the chain as a percentile score with respect to all X-ray entries followed by that with respect to entries of similar resolution.

The Analysed column shows the number of residues for which the sidechain conformation was analysed, and the total number of residues.

Mol	Chain	Analysed	Rotameric	Outliers	Percentiles	
1	A	115/123 (94%)	110 (96%)	5 (4%)	29	38
1	B	113/123 (92%)	105 (93%)	8 (7%)	14	17
1	C	113/123 (92%)	106 (94%)	7 (6%)	18	23
All	All	341/369 (92%)	321 (94%)	20 (6%)	19	25

All (20) residues with a non-rotameric sidechain are listed below:

Mol	Chain	Res	Type
1	A	28	ASP
1	A	67	THR
1	A	77	GLU
1	A	80	ASP
1	A	121	LYS

*Continued on next page...*

*Continued from previous page...*

Mol	Chain	Res	Type
1	B	43	ASN
1	B	67	THR
1	B	77	GLU
1	B	80	ASP
1	B	88	LYS
1	B	116	GLU
1	B	121	LYS
1	B	137	ASP
1	C	61	ASP
1	C	67	THR
1	C	77	GLU
1	C	80	ASP
1	C	88	LYS
1	C	121	LYS
1	C	150	ILE

Some sidechains can be flipped to improve hydrogen bonding and reduce clashes. All (1) such sidechains are listed below:

Mol	Chain	Res	Type
1	C	149	ASN

### 5.3.3 RNA [i](#)

There are no RNA molecules in this entry.

## 5.4 Non-standard residues in protein, DNA, RNA chains [i](#)

There are no non-standard protein/DNA/RNA residues in this entry.

## 5.5 Carbohydrates [i](#)

There are no carbohydrates in this entry.

## 5.6 Ligand geometry [i](#)

Of 27 ligands modelled in this entry, 1 is monoatomic - leaving 26 for Mogul analysis.

In the following table, the Counts columns list the number of bonds (or angles) for which Mogul statistics could be retrieved, the number of bonds (or angles) that are observed in the model and

the number of bonds (or angles) that are defined in the Chemical Component Dictionary. The Link column lists molecule types, if any, to which the group is linked. The Z score for a bond length (or angle) is the number of standard deviations the observed value is removed from the expected value. A bond length (or angle) with  $|Z| > 2$  is considered an outlier worth inspection. RMSZ is the root-mean-square of all Z scores of the bond lengths (or angles).

Mol	Type	Chain	Res	Link	Bond lengths			Bond angles		
					Counts	RMSZ	# Z  > 2	Counts	RMSZ	# Z  > 2
8	PEG	C	206	-	6,6,6	0.50	0	5,5,5	0.25	0
8	PEG	A	210	-	6,6,6	0.52	0	5,5,5	0.38	0
7	P4G	B	211	-	10,10,10	0.58	0	9,9,9	0.69	0
3	EDO	B	208	-	3,3,3	1.15	0	2,2,2	0.58	0
4	PO4	B	209	-	4,4,4	2.04	1 (25%)	6,6,6	0.59	0
3	EDO	A	202	-	3,3,3	0.54	0	2,2,2	0.40	0
3	EDO	C	202	-	3,3,3	0.65	0	2,2,2	0.21	0
8	PEG	A	209	-	6,6,6	0.49	0	5,5,5	0.22	0
3	EDO	B	205	-	3,3,3	0.66	0	2,2,2	0.07	0
3	EDO	C	203	-	3,3,3	0.82	0	2,2,2	0.18	0
5	CIT	A	206	-	3,12,12	0.35	0	3,17,17	2.36	2 (66%)
4	PO4	A	204	-	4,4,4	2.00	1 (25%)	6,6,6	0.39	0
3	EDO	A	203	-	3,3,3	0.65	0	2,2,2	0.27	0
3	EDO	B	204	-	3,3,3	0.69	0	2,2,2	0.11	0
4	PO4	A	205	-	4,4,4	2.49	1 (25%)	6,6,6	0.39	0
3	EDO	C	201	-	3,3,3	0.60	0	2,2,2	0.27	0
3	EDO	B	207	-	3,3,3	0.74	0	2,2,2	0.06	0
9	MPD	B	210	-	7,7,7	0.48	0	9,10,10	0.64	0
6	2PE	A	207	-	27,27,27	0.60	0	26,26,26	0.47	0
4	PO4	C	204	-	4,4,4	2.10	2 (50%)	6,6,6	0.48	0
7	P4G	A	208	-	10,10,10	0.58	0	9,9,9	0.50	0
3	EDO	B	206	-	3,3,3	0.66	0	2,2,2	0.29	0
3	EDO	B	201	-	3,3,3	0.62	0	2,2,2	0.30	0
3	EDO	B	202	-	3,3,3	0.57	0	2,2,2	0.39	0
3	EDO	B	203	-	3,3,3	0.62	0	2,2,2	0.26	0
9	MPD	C	205	-	7,7,7	0.94	1 (14%)	9,10,10	0.62	0

In the following table, the Chirals column lists the number of chiral outliers, the number of chiral centers analysed, the number of these observed in the model and the number defined in the Chemical Component Dictionary. Similar counts are reported in the Torsion and Rings columns. '-' means no outliers of that kind were identified.

Mol	Type	Chain	Res	Link	Chirals	Torsions	Rings
8	PEG	C	206	-	-	2/4/4/4	-
8	PEG	A	210	-	-	3/4/4/4	-

*Continued on next page...*



Continued from previous page...

Mol	Type	Chain	Res	Link	Chirals	Torsions	Rings
7	P4G	B	211	-	-	5/8/8/8	-
3	EDO	B	208	-	-	1/1/1/1	-
3	EDO	A	202	-	-	0/1/1/1	-
3	EDO	C	202	-	-	1/1/1/1	-
8	PEG	A	209	-	-	3/4/4/4	-
3	EDO	B	205	-	-	0/1/1/1	-
3	EDO	C	203	-	-	1/1/1/1	-
5	CIT	A	206	-	-	2/6/16/16	-
3	EDO	A	203	-	-	0/1/1/1	-
3	EDO	B	204	-	-	1/1/1/1	-
3	EDO	B	207	-	-	1/1/1/1	-
3	EDO	C	201	-	-	1/1/1/1	-
3	EDO	B	202	-	-	1/1/1/1	-
9	MPD	B	210	-	-	1/5/5/5	-
6	2PE	A	207	-	-	15/25/25/25	-
7	P4G	A	208	-	-	5/8/8/8	-
3	EDO	B	201	-	-	0/1/1/1	-
3	EDO	B	206	-	-	0/1/1/1	-
3	EDO	B	203	-	-	0/1/1/1	-
9	MPD	C	205	-	-	0/5/5/5	-

All (6) bond length outliers are listed below:

Mol	Chain	Res	Type	Atoms	Z	Observed(Å)	Ideal(Å)
4	A	205	PO4	P-O1	4.07	1.60	1.50
4	C	204	PO4	P-O1	2.46	1.56	1.50
9	C	205	MPD	C3-C2	2.20	1.59	1.53
4	B	209	PO4	P-O1	2.20	1.56	1.50
4	A	204	PO4	P-O1	2.11	1.55	1.50
4	C	204	PO4	P-O3	2.01	1.60	1.54

All (2) bond angle outliers are listed below:

Mol	Chain	Res	Type	Atoms	Z	Observed(°)	Ideal(°)
5	A	206	CIT	C3-C4-C5	3.23	120.15	114.98
5	A	206	CIT	C3-C2-C1	2.36	118.77	114.98

There are no chirality outliers.

All (43) torsion outliers are listed below:

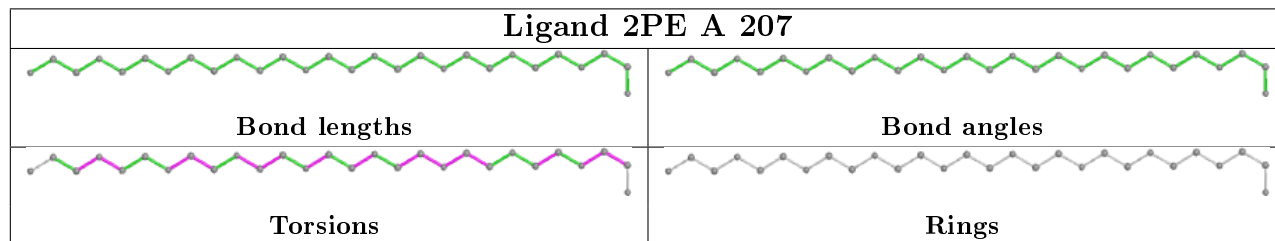
Mol	Chain	Res	Type	Atoms
6	A	207	2PE	O16-C17-C18-O19
6	A	207	2PE	O19-C20-C21-O22
8	C	206	PEG	O1-C1-C2-O2
8	A	209	PEG	O2-C3-C4-O4
6	A	207	2PE	O1-C2-C3-O4
6	A	207	2PE	C20-C21-O22-C23
6	A	207	2PE	O7-C8-C9-O10
3	B	202	EDO	O1-C1-C2-O2
8	A	210	PEG	O2-C3-C4-O4
7	B	211	P4G	O3-C5-C6-O4
7	A	208	P4G	C1-C2-O2-C3
7	B	211	P4G	C8-C7-O4-C6
7	A	208	P4G	O3-C5-C6-O4
3	C	201	EDO	O1-C1-C2-O2
6	A	207	2PE	C12-C11-O10-C9
7	B	211	P4G	C5-C6-O4-C7
6	A	207	2PE	C27-C26-O25-C24
7	B	211	P4G	C4-C3-O2-C2
7	A	208	P4G	C6-C5-O3-C4
8	A	210	PEG	C4-C3-O2-C2
9	B	210	MPD	C2-C3-C4-C5
7	A	208	P4G	C8-C7-O4-C6
6	A	207	2PE	C15-C14-O13-C12
6	A	207	2PE	O4-C5-C6-O7
6	A	207	2PE	C14-C15-O16-C17
5	A	206	CIT	C1-C2-C3-O7
8	A	209	PEG	C4-C3-O2-C2
3	C	202	EDO	O1-C1-C2-O2
3	C	203	EDO	O1-C1-C2-O2
3	B	207	EDO	O1-C1-C2-O2
8	A	210	PEG	C1-C2-O2-C3
7	B	211	P4G	C3-C4-O3-C5
8	A	209	PEG	O1-C1-C2-O2
8	C	206	PEG	C4-C3-O2-C2
6	A	207	2PE	C8-C9-O10-C11
6	A	207	2PE	C23-C24-O25-C26
6	A	207	2PE	C17-C18-O19-C20
7	A	208	P4G	O2-C3-C4-O3
6	A	207	2PE	C2-C3-O4-C5
3	B	208	EDO	O1-C1-C2-O2
3	B	204	EDO	O1-C1-C2-O2
5	A	206	CIT	C1-C2-C3-C4
6	A	207	2PE	O10-C11-C12-O13

There are no ring outliers.

3 monomers are involved in 7 short contacts:

Mol	Chain	Res	Type	Clashes	Symm-Clashes
7	B	211	P4G	3	0
9	B	210	MPD	2	0
6	A	207	2PE	2	0

The following is a two-dimensional graphical depiction of Mogul quality analysis of bond lengths, bond angles, torsion angles, and ring geometry for all instances of the Ligand of Interest. In addition, ligands with molecular weight > 250 and outliers as shown on the validation Tables will also be included. For torsion angles, if less than 5% of the Mogul distribution of torsion angles is within 10 degrees of the torsion angle in question, then that torsion angle is considered an outlier. Any bond that is central to one or more torsion angles identified as an outlier by Mogul will be highlighted in the graph. For rings, the root-mean-square deviation (RMSD) between the ring in question and similar rings identified by Mogul is calculated over all ring torsion angles. If the average RMSD is greater than 60 degrees and the minimal RMSD between the ring in question and any Mogul-identified rings is also greater than 60 degrees, then that ring is considered an outlier. The outliers are highlighted in purple. The color gray indicates Mogul did not find sufficient equivalents in the CSD to analyse the geometry.



## 5.7 Other polymers [i](#)

There are no such residues in this entry.

## 5.8 Polymer linkage issues [i](#)

There are no chain breaks in this entry.

## 6 Fit of model and data

### 6.1 Protein, DNA and RNA chains

In the following table, the column labelled ‘#RSRZ> 2’ contains the number (and percentage) of RSRZ outliers, followed by percent RSRZ outliers for the chain as percentile scores relative to all X-ray entries and entries of similar resolution. The OWAB column contains the minimum, median, 95<sup>th</sup> percentile and maximum values of the occupancy-weighted average B-factor per residue. The column labelled ‘Q< 0.9’ lists the number of (and percentage) of residues with an average occupancy less than 0.9.

Mol	Chain	Analysed	<RSRZ>	#RSRZ>2	OWAB(Å <sup>2</sup> )	Q<0.9
1	A	147/156 (94%)	0.39	4 (2%) 54 50	35, 88, 138, 161	1 (0%)
1	B	145/156 (92%)	0.27	7 (4%) 30 28	35, 86, 134, 161	1 (0%)
1	C	145/156 (92%)	0.46	8 (5%) 25 22	35, 84, 136, 158	0
All	All	437/468 (93%)	0.37	19 (4%) 35 32	35, 86, 138, 161	2 (0%)

All (19) RSRZ outliers are listed below:

Mol	Chain	Res	Type	RSRZ
1	A	30	VAL	5.5
1	C	30	VAL	4.2
1	C	74	ALA	4.1
1	C	29	ASP	3.6
1	B	60	ILE	3.4
1	A	29	ASP	3.4
1	A	86	LEU	2.5
1	B	30	VAL	2.5
1	C	112	GLU	2.5
1	B	66	ILE	2.4
1	B	118	LEU	2.4
1	A	74	ALA	2.3
1	B	42	TYR	2.2
1	C	31	LYS	2.1
1	C	32	LYS	2.1
1	C	60	ILE	2.1
1	C	28	ASP	2.0
1	B	122	LEU	2.0
1	B	62	GLU	2.0

## 6.2 Non-standard residues in protein, DNA, RNA chains [i](#)

There are no non-standard protein/DNA/RNA residues in this entry.

## 6.3 Carbohydrates [i](#)

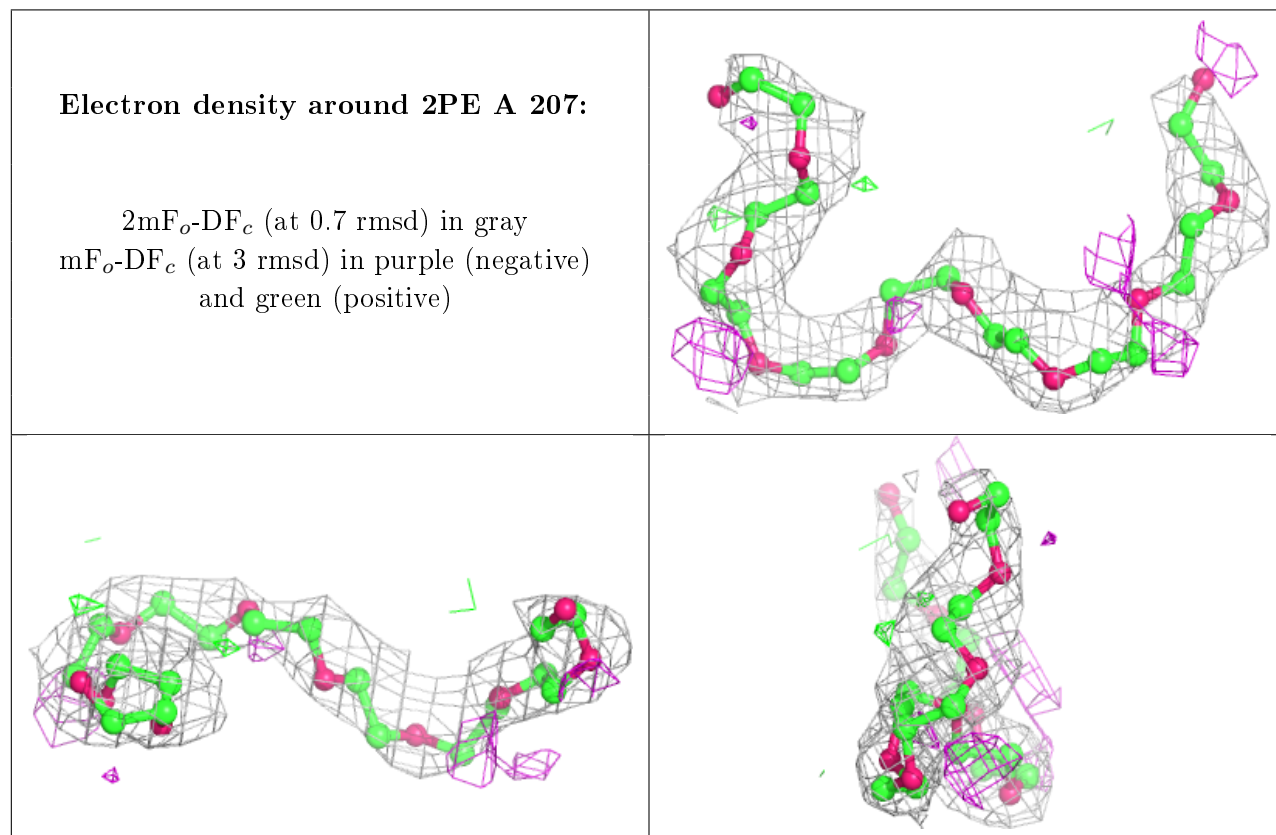
There are no carbohydrates in this entry.

## 6.4 Ligands [i](#)

In the following table, the Atoms column lists the number of modelled atoms in the group and the number defined in the chemical component dictionary. The B-factors column lists the minimum, median, 95<sup>th</sup> percentile and maximum values of B factors of atoms in the group. The column labelled 'Q< 0.9' lists the number of atoms with occupancy less than 0.9.

Mol	Type	Chain	Res	Atoms	RSCC	RSR	B-factors(Å <sup>2</sup> )	Q<0.9
8	PEG	A	210	7/7	0.64	0.49	85,100,106,107	0
8	PEG	A	209	7/7	0.64	0.32	109,110,112,112	0
3	EDO	B	206	4/4	0.73	0.28	91,93,95,95	0
5	CIT	A	206	13/13	0.74	0.26	112,117,121,122	0
4	PO4	A	204	5/5	0.75	0.40	183,183,183,184	0
3	EDO	A	202	4/4	0.77	0.16	109,109,109,110	0
3	EDO	C	203	4/4	0.78	0.19	78,82,84,85	0
3	EDO	B	203	4/4	0.78	0.16	115,116,116,117	0
8	PEG	C	206	7/7	0.79	0.28	95,100,101,102	0
3	EDO	C	202	4/4	0.79	0.17	99,99,99,99	0
4	PO4	B	209	5/5	0.81	0.21	148,150,150,151	0
3	EDO	B	201	4/4	0.81	0.18	101,102,103,104	0
3	EDO	C	201	4/4	0.82	0.17	88,89,89,90	0
3	EDO	B	205	4/4	0.83	0.18	99,102,103,103	0
3	EDO	B	208	4/4	0.84	0.28	58,67,73,75	0
3	EDO	B	204	4/4	0.84	0.37	88,91,93,94	0
7	P4G	A	208	11/11	0.85	0.27	86,91,97,97	0
3	EDO	B	207	4/4	0.85	0.27	65,66,67,68	0
7	P4G	B	211	11/11	0.86	0.28	76,85,92,93	0
3	EDO	B	202	4/4	0.86	0.24	95,97,99,101	0
6	2PE	A	207	28/28	0.87	0.31	78,93,110,111	0
3	EDO	A	203	4/4	0.88	0.13	95,97,98,99	0
4	PO4	C	204	5/5	0.91	0.20	136,136,137,138	0
9	MPD	B	210	8/8	0.91	0.20	64,70,72,79	0
9	MPD	C	205	8/8	0.91	0.18	62,72,75,80	0
4	PO4	A	205	5/5	0.95	0.14	135,136,137,137	0
2	CL	A	201	1/1	0.99	0.10	69,69,69,69	0

The following is a graphical depiction of the model fit to experimental electron density of all instances of the Ligand of Interest. In addition, ligands with molecular weight > 250 and outliers as shown on the geometry validation Tables will also be included. Each fit is shown from different orientation to approximate a three-dimensional view.



## 6.5 Other polymers [i](#)

There are no such residues in this entry.