



Full wwPDB X-ray Structure Validation Report ⓘ

Sep 16, 2023 – 08:04 AM EDT

PDB ID : 8EXB
Title : Crystal structure of CYP3A4 bound to an inhibitor
Authors : Sevrioukova, I.F.
Deposited on : 2022-10-25
Resolution : 2.05 Å(reported)

This is a Full wwPDB X-ray Structure Validation Report for a publicly released PDB entry.

We welcome your comments at validation@mail.wwpdb.org

A user guide is available at

<https://www.wwpdb.org/validation/2017/XrayValidationReportHelp>

with specific help available everywhere you see the ⓘ symbol.

The types of validation reports are described at

<http://www.wwpdb.org/validation/2017/FAQs#types>.

The following versions of software and data (see [references ⓘ](#)) were used in the production of this report:

MolProbity : 4.02b-467
Mogul : 1.8.5 (274361), CSD as541be (2020)
Xtriage (Phenix) : 1.13
EDS : 2.35.1
buster-report : 1.1.7 (2018)
Percentile statistics : 20191225.v01 (using entries in the PDB archive December 25th 2019)
Refmac : 5.8.0158
CCP4 : 7.0.044 (Gargrove)
Ideal geometry (proteins) : Engh & Huber (2001)
Ideal geometry (DNA, RNA) : Parkinson et al. (1996)
Validation Pipeline (wwPDB-VP) : 2.35.1

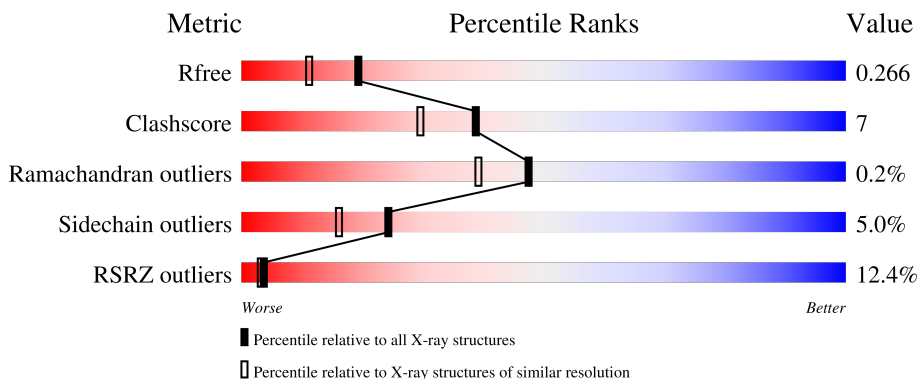
1 Overall quality at a glance

The following experimental techniques were used to determine the structure:

X-RAY DIFFRACTION

The reported resolution of this entry is 2.05 Å.

Percentile scores (ranging between 0-100) for global validation metrics of the entry are shown in the following graphic. The table shows the number of entries on which the scores are based.



Metric	Whole archive (#Entries)	Similar resolution (#Entries, resolution range(Å))
R_{free}	130704	1692 (2.04-2.04)
Clashscore	141614	1773 (2.04-2.04)
Ramachandran outliers	138981	1752 (2.04-2.04)
Sidechain outliers	138945	1752 (2.04-2.04)
RSRZ outliers	127900	1672 (2.04-2.04)

The table below summarises the geometric issues observed across the polymeric chains and their fit to the electron density. The red, orange, yellow and green segments of the lower bar indicate the fraction of residues that contain outliers for ≥ 3 , 2, 1 and 0 types of geometric quality criteria respectively. A grey segment represents the fraction of residues that are not modelled. The numeric value for each fraction is indicated below the corresponding segment, with a dot representing fractions $\leq 5\%$. The upper red bar (where present) indicates the fraction of residues that have poor fit to the electron density. The numeric value is given above the bar.

Mol	Chain	Length	Quality of chain
1	A	487	

2 Entry composition

There are 4 unique types of molecules in this entry. The entry contains 3719 atoms, of which 0 are hydrogens and 0 are deuteriums.

In the tables below, the ZeroOcc column contains the number of atoms modelled with zero occupancy, the AltConf column contains the number of residues with at least one atom in alternate conformation and the Trace column contains the number of residues modelled with at most 2 atoms.

- Molecule 1 is a protein called Cytochrome P450 3A4.

Mol	Chain	Residues	Atoms					ZeroOcc	AltConf	Trace
			Total	C	N	O	S			
1	A	443	3567	2329	583	630	25	0	1	0

There are 24 discrepancies between the modelled and reference sequences:

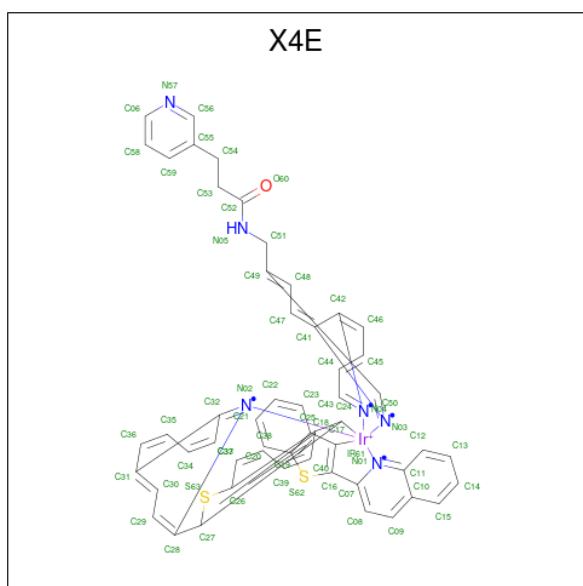
Chain	Residue	Modelled	Actual	Comment	Reference
A	?	-	LEU	deletion	UNP P08684
A	?	-	ILE	deletion	UNP P08684
A	?	-	PRO	deletion	UNP P08684
A	?	-	ASP	deletion	UNP P08684
A	?	-	LEU	deletion	UNP P08684
A	?	-	ALA	deletion	UNP P08684
A	?	-	MET	deletion	UNP P08684
A	?	-	GLU	deletion	UNP P08684
A	?	-	THR	deletion	UNP P08684
A	?	-	TRP	deletion	UNP P08684
A	?	-	LEU	deletion	UNP P08684
A	?	-	LEU	deletion	UNP P08684
A	?	-	LEU	deletion	UNP P08684
A	?	-	ALA	deletion	UNP P08684
A	?	-	VAL	deletion	UNP P08684
A	?	-	SER	deletion	UNP P08684
A	?	-	LEU	deletion	UNP P08684
A	?	-	VAL	deletion	UNP P08684
A	?	-	LEU	deletion	UNP P08684
A	?	-	LEU	deletion	UNP P08684
A	504	HIS	-	expression tag	UNP P08684
A	505	HIS	-	expression tag	UNP P08684
A	506	HIS	-	expression tag	UNP P08684
A	507	HIS	-	expression tag	UNP P08684

- Molecule 2 is PROTOPORPHYRIN IX CONTAINING FE (three-letter code: HEM) (formula: C₃₄H₃₂FeN₄O₄).



Mol	Chain	Residues	Atoms					ZeroOcc	AltConf
			Total	C	Fe	N	O		
2	A	1	43	34	1	4	4	0	0

- Molecule 3 is {N-([(2,2'-bipyridin]-5-yl-kappa 2 N 1 ,N 1')methyl]-3-(pyridin-3-yl)propanamide}bis[2-(quinolin-2-yl-kappaN)-1-benzothiophen-3-yl-kappaC 3]iridium(1+) (three-letter code: X4E) (formula: C₅₃H₃₈IrN₆OS₂) (labeled as "Ligand of Interest" by depositor).



Mol	Chain	Residues	Atoms					ZeroOcc	AltConf	
			Total	C	Ir	N	O			S
3	A	1	63	53	1	6	1	2	0	0

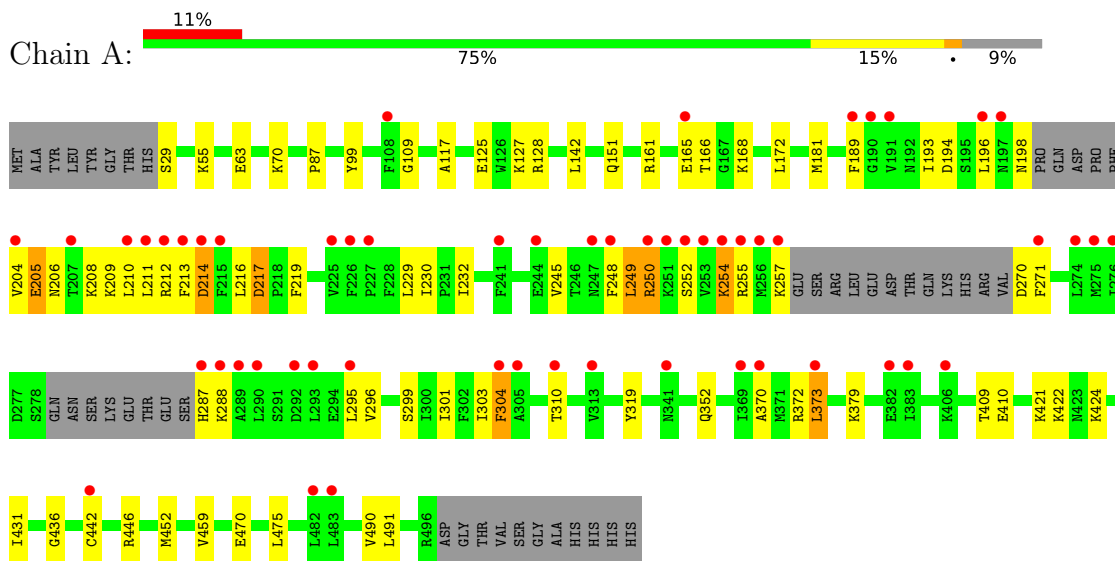
- Molecule 4 is water.

Mol	Chain	Residues	Atoms		ZeroOcc	AltConf
4	A	46	Total	O	0	0
			46	46		

3 Residue-property plots [i](#)

These plots are drawn for all protein, RNA, DNA and oligosaccharide chains in the entry. The first graphic for a chain summarises the proportions of the various outlier classes displayed in the second graphic. The second graphic shows the sequence view annotated by issues in geometry and electron density. Residues are color-coded according to the number of geometric quality criteria for which they contain at least one outlier: green = 0, yellow = 1, orange = 2 and red = 3 or more. A red dot above a residue indicates a poor fit to the electron density ($RSRZ > 2$). Stretches of 2 or more consecutive residues without any outlier are shown as a green connector. Residues present in the sample, but not in the model, are shown in grey.

- Molecule 1: Cytochrome P450 3A4



4 Data and refinement statistics

Property	Value	Source
Space group	I 2 2 2	Depositor
Cell constants a, b, c, α , β , γ	77.23Å 99.52Å 130.56Å 90.00° 90.00° 90.00°	Depositor
Resolution (Å)	39.87 – 2.05 39.87 – 2.05	Depositor EDS
% Data completeness (in resolution range)	99.3 (39.87-2.05) 99.3 (39.87-2.05)	Depositor EDS
R_{merge}	0.09	Depositor
R_{sym}	(Not available)	Depositor
$\langle I/\sigma(I) \rangle$ ¹	1.20 (at 2.05Å)	Xtrriage
Refinement program	PHENIX (1.20.1_4487: ???)	Depositor
R, R_{free}	0.237 , 0.267 0.234 , 0.266	Depositor DCC
R_{free} test set	1565 reflections (4.94%)	wwPDB-VP
Wilson B-factor (Å ²)	50.2	Xtrriage
Anisotropy	0.465	Xtrriage
Bulk solvent k_{sol} (e/Å ³), B_{sol} (Å ²)	0.34 , 61.7	EDS
L-test for twinning ²	$\langle L \rangle = 0.48$, $\langle L^2 \rangle = 0.31$	Xtrriage
Estimated twinning fraction	No twinning to report.	Xtrriage
F_o, F_c correlation	0.95	EDS
Total number of atoms	3719	wwPDB-VP
Average B, all atoms (Å ²)	71.0	wwPDB-VP

Xtrriage's analysis on translational NCS is as follows: *The largest off-origin peak in the Patterson function is 5.59% of the height of the origin peak. No significant pseudotranslation is detected.*

¹Intensities estimated from amplitudes.

²Theoretical values of $\langle |L| \rangle$, $\langle L^2 \rangle$ for acentric reflections are 0.5, 0.333 respectively for untwinned datasets, and 0.375, 0.2 for perfectly twinned datasets.

5 Model quality [i](#)

5.1 Standard geometry [i](#)

Bond lengths and bond angles in the following residue types are not validated in this section: X4E, HEM

The Z score for a bond length (or angle) is the number of standard deviations the observed value is removed from the expected value. A bond length (or angle) with $|Z| > 5$ is considered an outlier worth inspection. RMSZ is the root-mean-square of all Z scores of the bond lengths (or angles).

Mol	Chain	Bond lengths		Bond angles	
		RMSZ	# Z >5	RMSZ	# Z >5
1	A	0.26	0/3655	0.47	0/4939

There are no bond length outliers.

There are no bond angle outliers.

There are no chirality outliers.

There are no planarity outliers.

5.2 Too-close contacts [i](#)

In the following table, the Non-H and H(model) columns list the number of non-hydrogen atoms and hydrogen atoms in the chain respectively. The H(added) column lists the number of hydrogen atoms added and optimized by MolProbity. The Clashes column lists the number of clashes within the asymmetric unit, whereas Symm-Clashes lists symmetry-related clashes.

Mol	Chain	Non-H	H(model)	H(added)	Clashes	Symm-Clashes
1	A	3567	0	3669	48	0
2	A	43	0	30	5	0
3	A	63	0	0	7	0
4	A	46	0	0	3	0
All	All	3719	0	3699	55	0

The all-atom clashscore is defined as the number of clashes found per 1000 atoms (including hydrogen atoms). The all-atom clashscore for this structure is 7.

All (55) close contacts within the same asymmetric unit are listed below, sorted by their clash magnitude.

Atom-1	Atom-2	Interatomic distance (Å)	Clash overlap (Å)
1:A:270:ASP:N	4:A:701:HOH:O	2.24	0.69
1:A:166:THR:HG22	1:A:168:LYS:H	1.59	0.66
1:A:87:PRO:HG3	1:A:431:ILE:HD11	1.79	0.65
1:A:206:ASN:HD21	1:A:245:VAL:HA	1.64	0.62
1:A:271:PHE:N	4:A:701:HOH:O	2.33	0.61
1:A:205:GLU:HG3	1:A:209:LYS:HD2	1.82	0.60
2:A:601:HEM:HMC2	2:A:601:HEM:HBC2	1.83	0.59
1:A:55:LYS:NZ	1:A:63:GLU:OE1	2.31	0.59
1:A:181:MET:HG2	1:A:208:LYS:HB2	1.85	0.58
1:A:172:LEU:HD11	1:A:491:LEU:HD12	1.87	0.57
3:A:602:X4E:C43	3:A:602:X4E:C07	2.81	0.57
1:A:205:GLU:O	1:A:210:LEU:N	2.39	0.55
1:A:310:THR:HG23	1:A:452:MET:HG2	1.89	0.55
1:A:189:PHE:HZ	1:A:299:SER:HB3	1.71	0.53
1:A:125:GLU:OE1	1:A:128:ARG:NH1	2.42	0.53
1:A:208:LYS:O	1:A:212:ARG:HG3	2.09	0.53
1:A:214:ASP:HB3	3:A:602:X4E:C21	2.40	0.52
1:A:370:ALA:O	3:A:602:X4E:C36	2.58	0.52
1:A:109:GLY:HA2	1:A:230:ILE:HD13	1.92	0.51
1:A:250:ARG:HG2	1:A:296:VAL:HG21	1.94	0.49
2:A:601:HEM:HBB2	2:A:601:HEM:HMB2	1.94	0.49
1:A:161:ARG:O	1:A:165:GLU:HG2	2.12	0.49
1:A:206:ASN:O	1:A:210:LEU:HB2	2.13	0.49
1:A:421:LYS:HA	1:A:424:LYS:HG2	1.95	0.48
3:A:602:X4E:C23	3:A:602:X4E:C25	2.91	0.48
1:A:208:LYS:H	1:A:211:LEU:HB2	1.79	0.47
1:A:99:TYR:CE1	1:A:127:LYS:HE2	2.49	0.47
3:A:602:X4E:C50	3:A:602:X4E:C28	2.92	0.47
1:A:189:PHE:CZ	1:A:299:SER:HB3	2.51	0.46
1:A:229:LEU:HA	1:A:232:ILE:HD13	1.96	0.46
1:A:370:ALA:O	1:A:372:ARG:N	2.42	0.46
1:A:436:GLY:HA3	2:A:601:HEM:HBA1	1.97	0.46
1:A:211:LEU:HD11	1:A:304:PHE:HA	1.98	0.45
1:A:352:GLN:NE2	4:A:708:HOH:O	2.50	0.45
1:A:194:ASP:O	1:A:198:ASN:ND2	2.35	0.44
1:A:70:LYS:HD2	1:A:70:LYS:HA	1.81	0.44
1:A:254:LYS:HA	1:A:254:LYS:HD3	1.72	0.44
1:A:206:ASN:HA	1:A:210:LEU:HB2	2.00	0.44
1:A:245:VAL:O	1:A:249:LEU:HD22	2.18	0.44
1:A:252:SER:HA	1:A:255:ARG:NE	2.33	0.43
1:A:319:TYR:CZ	1:A:475:LEU:HB2	2.53	0.43
1:A:373:LEU:HD21	1:A:436:GLY:HA2	1.99	0.43

Continued on next page...

Continued from previous page...

Atom-1	Atom-2	Interatomic distance (Å)	Clash overlap (Å)
1:A:217:ASP:HB3	1:A:219:PHE:H	1.83	0.43
1:A:442:CYS:HB2	2:A:601:HEM:C4A	2.54	0.43
3:A:602:X4E:C23	3:A:602:X4E:C24	2.96	0.43
1:A:287:HIS:HB3	1:A:288:LYS:H	1.51	0.42
1:A:189:PHE:CE2	1:A:303:ILE:HD11	2.54	0.42
1:A:409:THR:HG22	1:A:410:GLU:HG3	2.01	0.42
1:A:248:PHE:O	1:A:252:SER:N	2.48	0.42
1:A:470:GLU:HB3	1:A:490:VAL:HG21	2.00	0.42
1:A:117:ALA:HB1	1:A:301:ILE:HG13	2.02	0.42
1:A:379:LYS:HE3	1:A:379:LYS:HB2	1.90	0.42
1:A:442:CYS:HB2	2:A:601:HEM:NA	2.34	0.41
3:A:602:X4E:C24	3:A:602:X4E:C18	2.89	0.41
1:A:205:GLU:HA	1:A:209:LYS:HB3	2.02	0.41

There are no symmetry-related clashes.

5.3 Torsion angles [i](#)

5.3.1 Protein backbone [i](#)

In the following table, the Percentiles column shows the percent Ramachandran outliers of the chain as a percentile score with respect to all X-ray entries followed by that with respect to entries of similar resolution.

The Analysed column shows the number of residues for which the backbone conformation was analysed, and the total number of residues.

Mol	Chain	Analysed	Favoured	Allowed	Outliers	Percentiles
1	A	436/487 (90%)	419 (96%)	16 (4%)	1 (0%)	47 39

All (1) Ramachandran outliers are listed below:

Mol	Chain	Res	Type
1	A	213	PHE

5.3.2 Protein sidechains [i](#)

In the following table, the Percentiles column shows the percent sidechain outliers of the chain as a percentile score with respect to all X-ray entries followed by that with respect to entries of similar resolution.

The Analysed column shows the number of residues for which the sidechain conformation was analysed, and the total number of residues.

Mol	Chain	Analysed	Rotameric	Outliers	Percentiles
1	A	405/443 (91%)	385 (95%)	20 (5%)	25 17

All (20) residues with a non-rotameric sidechain are listed below:

Mol	Chain	Res	Type
1	A	29	SER
1	A	142	LEU
1	A	151	GLN
1	A	193	ILE
1	A	196	LEU
1	A	204	VAL
1	A	205	GLU
1	A	214	ASP
1	A	216	LEU
1	A	217	ASP
1	A	249	LEU
1	A	250	ARG
1	A	254	LYS
1	A	257	LYS
1	A	295	LEU
1	A	304	PHE
1	A	373	LEU
1	A	422	LYS
1	A	446	ARG
1	A	459	VAL

Sometimes sidechains can be flipped to improve hydrogen bonding and reduce clashes. All (1) such sidechains are listed below:

Mol	Chain	Res	Type
1	A	206	ASN

5.3.3 RNA [i](#)

There are no RNA molecules in this entry.

5.4 Non-standard residues in protein, DNA, RNA chains [i](#)

There are no non-standard protein/DNA/RNA residues in this entry.

5.5 Carbohydrates [i](#)

There are no monosaccharides in this entry.

5.6 Ligand geometry [i](#)

2 ligands are modelled in this entry.

In the following table, the Counts columns list the number of bonds (or angles) for which Mogul statistics could be retrieved, the number of bonds (or angles) that are observed in the model and the number of bonds (or angles) that are defined in the Chemical Component Dictionary. The Link column lists molecule types, if any, to which the group is linked. The Z score for a bond length (or angle) is the number of standard deviations the observed value is removed from the expected value. A bond length (or angle) with $|Z| > 2$ is considered an outlier worth inspection. RMSZ is the root-mean-square of all Z scores of the bond lengths (or angles).

Mol	Type	Chain	Res	Link	Bond lengths			Bond angles		
					Counts	RMSZ	# Z > 2	Counts	RMSZ	# Z > 2
2	HEM	A	601	1,3	41,50,50	1.47	4 (9%)	45,82,82	1.48	7 (15%)
3	X4E	A	602	2	66,76,76	2.27	14 (21%)	74,122,122	2.20	25 (33%)

In the following table, the Chirals column lists the number of chiral outliers, the number of chiral centers analysed, the number of these observed in the model and the number defined in the Chemical Component Dictionary. Similar counts are reported in the Torsion and Rings columns. '-' means no outliers of that kind were identified.

Mol	Type	Chain	Res	Link	Chirals	Torsions	Rings
2	HEM	A	601	1,3	-	0/12/54/54	-
3	X4E	A	602	2	-	3/10/154/154	0/14/14/14

All (18) bond length outliers are listed below:

Mol	Chain	Res	Type	Atoms	Z	Observed(Å)	Ideal(Å)
3	A	602	X4E	C07-C16	-6.12	1.35	1.48
3	A	602	X4E	C53-C52	-6.09	1.39	1.51
3	A	602	X4E	C52-N05	5.97	1.46	1.33
3	A	602	X4E	C42-C41	-5.72	1.33	1.47
3	A	602	X4E	C28-C27	-5.36	1.36	1.48
3	A	602	X4E	C51-C49	-5.27	1.40	1.51
3	A	602	X4E	IR61-N02	-4.14	1.89	2.13
3	A	602	X4E	C54-C55	-4.08	1.39	1.51
2	A	601	HEM	C3C-CAC	3.82	1.55	1.47
3	A	602	X4E	IR61-N01	-3.81	1.91	2.13
2	A	601	HEM	C3C-C2C	-3.77	1.35	1.40

Continued on next page...

Continued from previous page...

Mol	Chain	Res	Type	Atoms	Z	Observed(Å)	Ideal(Å)
3	A	602	X4E	IR61-N04	-3.38	1.91	2.08
3	A	602	X4E	IR61-N03	-3.36	1.91	2.08
2	A	601	HEM	CAB-C3B	3.04	1.55	1.47
3	A	602	X4E	C42-N04	-2.87	1.31	1.37
3	A	602	X4E	C17-C18	2.83	1.48	1.43
3	A	602	X4E	C54-C53	-2.60	1.39	1.52
2	A	601	HEM	CMB-C2B	2.06	1.55	1.50

All (32) bond angle outliers are listed below:

Mol	Chain	Res	Type	Atoms	Z	Observed(°)	Ideal(°)
3	A	602	X4E	C47-C41-N03	5.31	127.25	119.86
3	A	602	X4E	C46-C42-N04	4.64	126.31	119.86
3	A	602	X4E	C54-C53-C52	4.38	122.78	112.72
3	A	602	X4E	C40-C25-C24	-4.20	125.66	134.33
3	A	602	X4E	C51-N05-C52	-4.19	115.81	122.34
3	A	602	X4E	C28-C27-C24	4.17	121.07	113.79
3	A	602	X4E	C50-N03-C41	-4.08	111.66	119.19
3	A	602	X4E	C41-C42-N04	-4.03	110.18	115.40
2	A	601	HEM	C4B-CHC-C1C	3.83	127.61	122.56
3	A	602	X4E	C47-C48-C49	-3.69	115.95	121.03
3	A	602	X4E	C07-C16-C17	3.66	120.17	113.79
3	A	602	X4E	C08-C07-N01	3.48	126.18	121.27
3	A	602	X4E	C43-N04-C42	-3.47	113.98	119.06
3	A	602	X4E	C49-C51-N05	-3.28	106.02	113.05
2	A	601	HEM	C4D-ND-C1D	3.10	108.27	105.07
2	A	601	HEM	C1B-NB-C4B	2.85	108.02	105.07
3	A	602	X4E	C53-C52-N05	2.64	120.86	116.42
3	A	602	X4E	C29-C28-N02	2.58	124.91	121.27
3	A	602	X4E	C30-C29-C28	-2.57	116.17	119.77
3	A	602	X4E	C07-N01-C11	-2.48	115.94	118.69
3	A	602	X4E	C06-N57-C56	2.42	121.03	116.85
3	A	602	X4E	C29-C28-C27	-2.37	119.17	124.62
3	A	602	X4E	C12-C11-C10	-2.37	116.08	119.25
3	A	602	X4E	C59-C55-C56	2.32	120.51	117.10
2	A	601	HEM	C3D-C4D-ND	-2.26	107.65	110.17
3	A	602	X4E	C47-C41-C42	-2.21	119.38	123.75
3	A	602	X4E	C13-C12-C11	2.20	123.67	119.44
3	A	602	X4E	C36-C31-C30	-2.16	118.14	123.19
2	A	601	HEM	CMC-C2C-C3C	2.16	128.72	124.68
2	A	601	HEM	C3B-C2B-C1B	2.12	108.06	106.49
2	A	601	HEM	C4C-CHD-C1D	2.12	125.36	122.56

Continued on next page...

Continued from previous page...

Mol	Chain	Res	Type	Atoms	Z	Observed(°)	Ideal(°)
3	A	602	X4E	C08-C09-C10	-2.00	117.72	120.82

There are no chirality outliers.

All (3) torsion outliers are listed below:

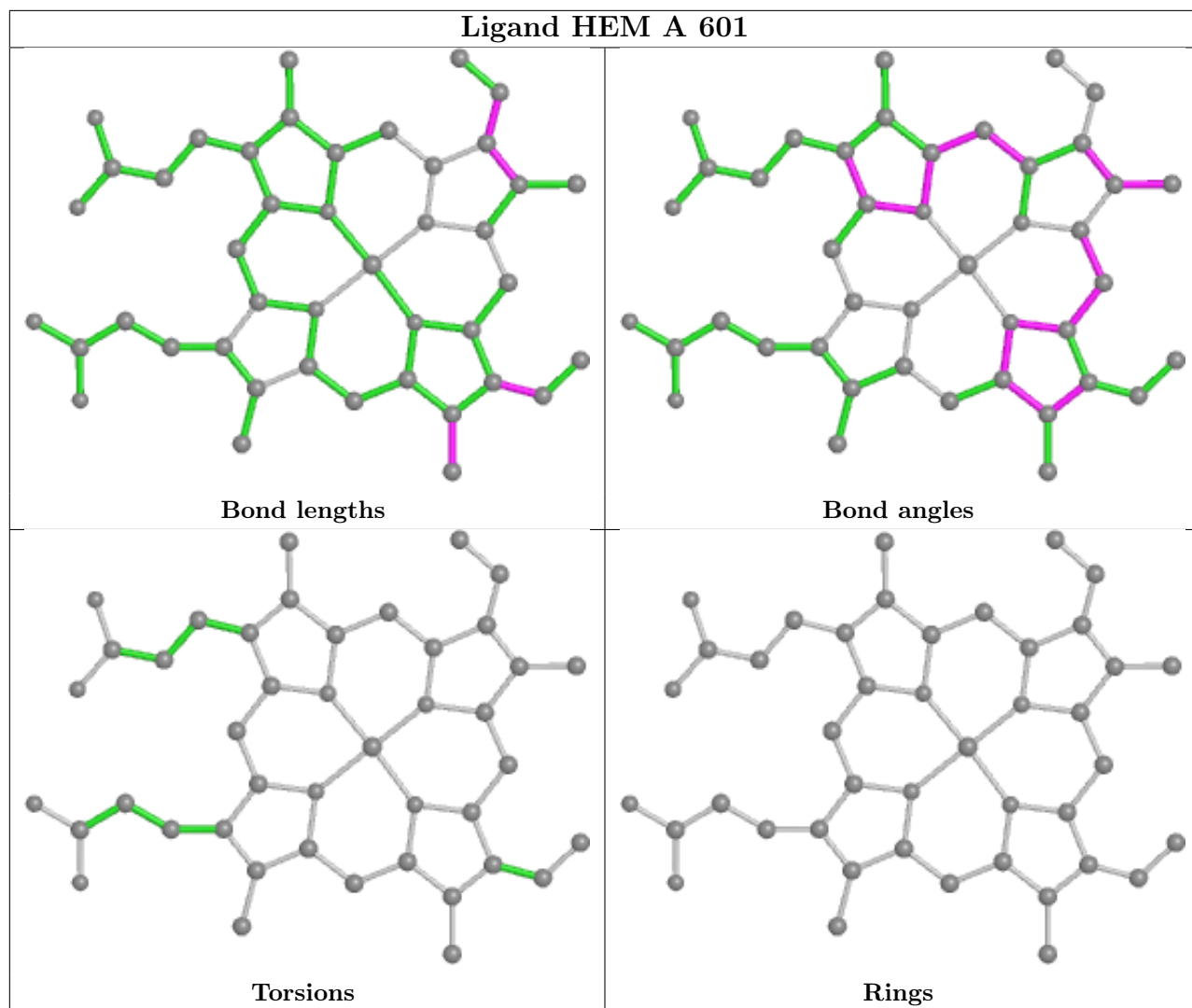
Mol	Chain	Res	Type	Atoms
3	A	602	X4E	C53-C54-C55-C56
3	A	602	X4E	C53-C54-C55-C59
3	A	602	X4E	C52-C53-C54-C55

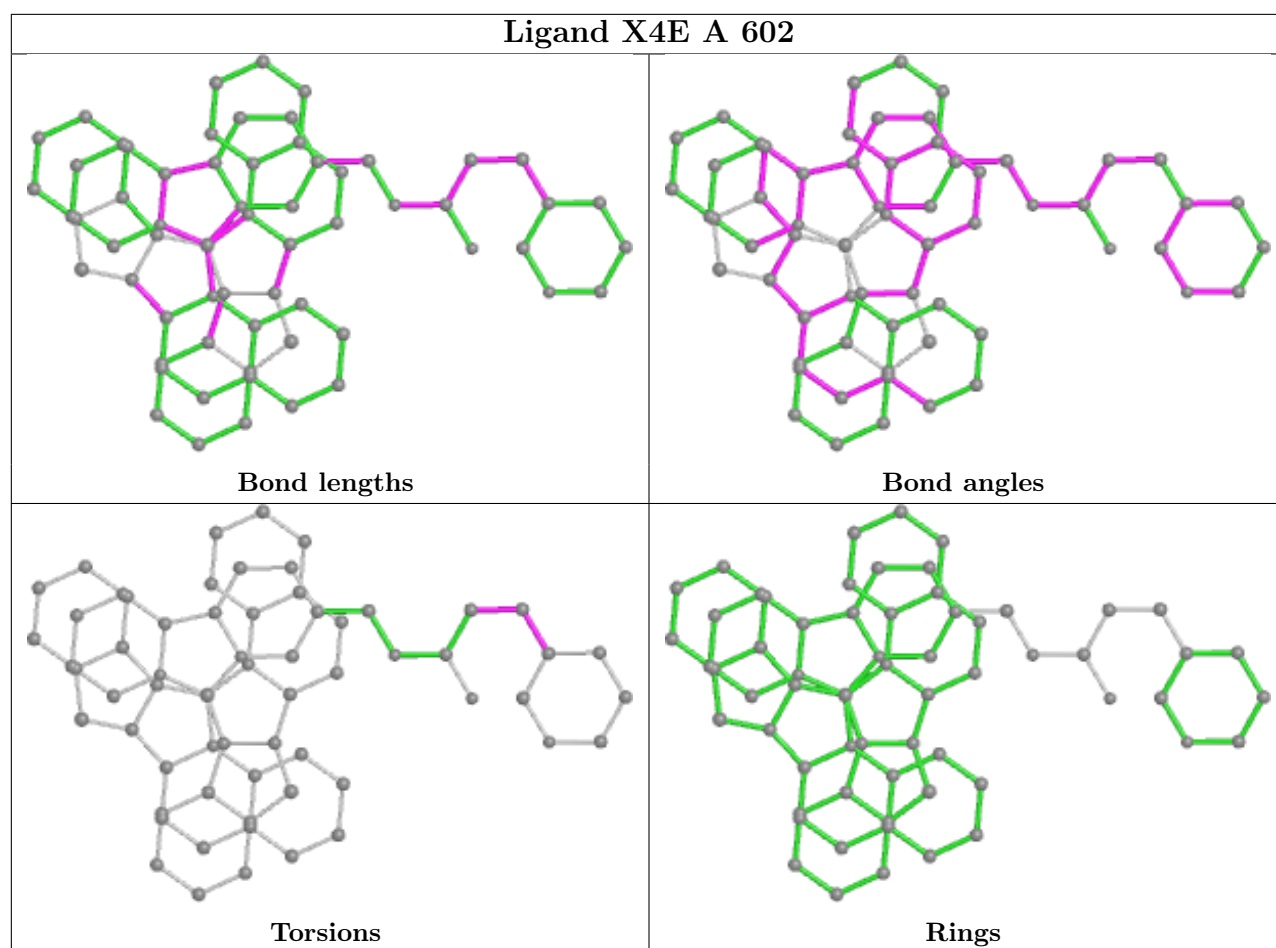
There are no ring outliers.

2 monomers are involved in 12 short contacts:

Mol	Chain	Res	Type	Clashes	Symm-Clashes
2	A	601	HEM	5	0
3	A	602	X4E	7	0

The following is a two-dimensional graphical depiction of Mogul quality analysis of bond lengths, bond angles, torsion angles, and ring geometry for all instances of the Ligand of Interest. In addition, ligands with molecular weight > 250 and outliers as shown on the validation Tables will also be included. For torsion angles, if less than 5% of the Mogul distribution of torsion angles is within 10 degrees of the torsion angle in question, then that torsion angle is considered an outlier. Any bond that is central to one or more torsion angles identified as an outlier by Mogul will be highlighted in the graph. For rings, the root-mean-square deviation (RMSD) between the ring in question and similar rings identified by Mogul is calculated over all ring torsion angles. If the average RMSD is greater than 60 degrees and the minimal RMSD between the ring in question and any Mogul-identified rings is also greater than 60 degrees, then that ring is considered an outlier. The outliers are highlighted in purple. The color gray indicates Mogul did not find sufficient equivalents in the CSD to analyse the geometry.





5.7 Other polymers [i](#)

There are no such residues in this entry.

5.8 Polymer linkage issues [i](#)

There are no chain breaks in this entry.

6 Fit of model and data

6.1 Protein, DNA and RNA chains

In the following table, the column labelled ‘#RSRZ > 2’ contains the number (and percentage) of RSRZ outliers, followed by percent RSRZ outliers for the chain as percentile scores relative to all X-ray entries and entries of similar resolution. The OWAB column contains the minimum, median, 95th percentile and maximum values of the occupancy-weighted average B-factor per residue. The column labelled ‘Q < 0.9’ lists the number of (and percentage) of residues with an average occupancy less than 0.9.

Mol	Chain	Analysed	<RSRZ>	#RSRZ>2	OWAB(Å ²)	Q<0.9
1	A	443/487 (90%)	0.75	55 (12%) 4 3	39, 66, 118, 146	0

All (55) RSRZ outliers are listed below:

Mol	Chain	Res	Type	RSRZ
1	A	276	ILE	7.2
1	A	255	ARG	7.1
1	A	215	PHE	7.0
1	A	212	ARG	6.8
1	A	189	PHE	6.7
1	A	211	LEU	6.6
1	A	251	LYS	6.2
1	A	213	PHE	6.2
1	A	274	LEU	6.0
1	A	289	ALA	5.6
1	A	253	VAL	5.1
1	A	254	LYS	5.0
1	A	250	ARG	4.8
1	A	293	LEU	4.4
1	A	292	ASP	4.1
1	A	275	MET	4.0
1	A	244	GLU	4.0
1	A	295	LEU	4.0
1	A	191	VAL	4.0
1	A	287	HIS	3.8
1	A	252	SER	3.6
1	A	204	VAL	3.2
1	A	247	ASN	3.2
1	A	226	PHE	3.1
1	A	196	LEU	3.1
1	A	248	PHE	3.0
1	A	341	ASN	3.0

Continued on next page...

Continued from previous page...

Mol	Chain	Res	Type	RSRZ
1	A	210	LEU	3.0
1	A	290	LEU	3.0
1	A	108	PHE	2.9
1	A	271	PHE	2.7
1	A	482	LEU	2.7
1	A	227	PRO	2.6
1	A	483	LEU	2.5
1	A	257	LYS	2.5
1	A	304	PHE	2.5
1	A	370	ALA	2.5
1	A	288	LYS	2.5
1	A	382	GLU	2.5
1	A	406	LYS	2.5
1	A	207	THR	2.4
1	A	214	ASP	2.4
1	A	305	ALA	2.4
1	A	310	THR	2.4
1	A	241	PHE	2.3
1	A	383	ILE	2.3
1	A	165	GLU	2.3
1	A	442	CYS	2.2
1	A	190	GLY	2.2
1	A	225	VAL	2.2
1	A	197	ASN	2.1
1	A	313	VAL	2.1
1	A	369	ILE	2.1
1	A	373	LEU	2.1
1	A	256	MET	2.0

6.2 Non-standard residues in protein, DNA, RNA chains [i](#)

There are no non-standard protein/DNA/RNA residues in this entry.

6.3 Carbohydrates [i](#)

There are no monosaccharides in this entry.

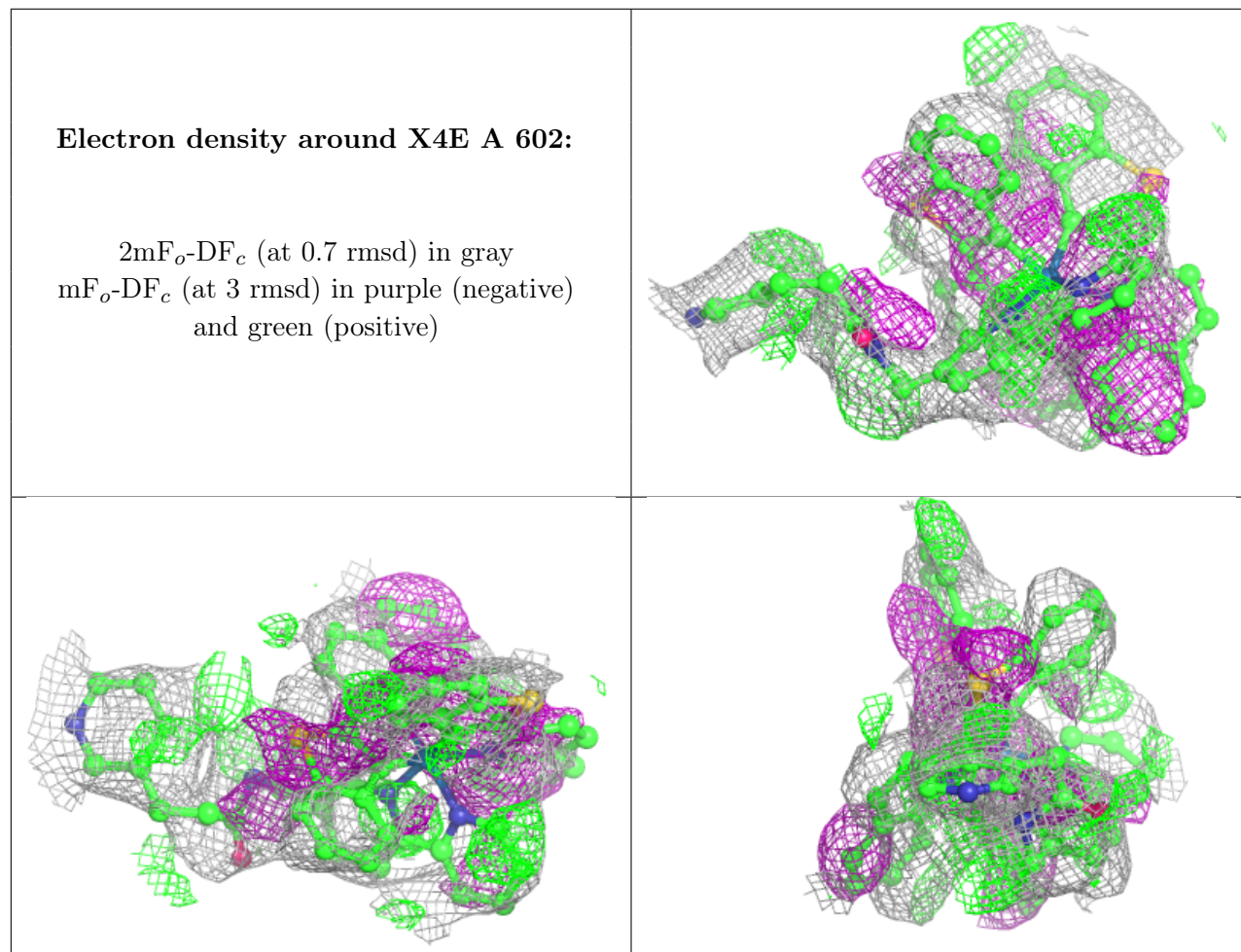
6.4 Ligands [i](#)

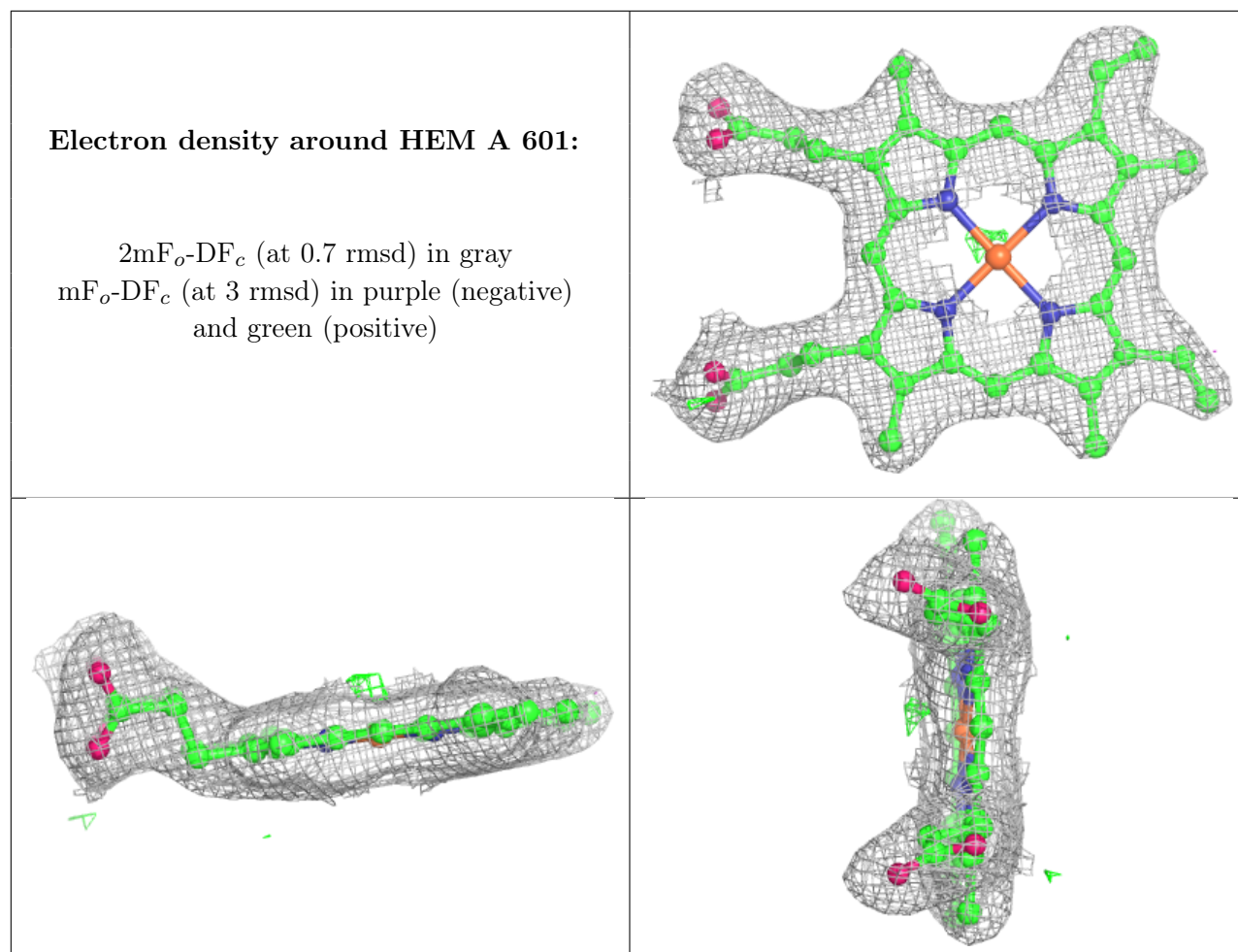
In the following table, the Atoms column lists the number of modelled atoms in the group and the number defined in the chemical component dictionary. The B-factors column lists the minimum,

median, 95th percentile and maximum values of B factors of atoms in the group. The column labelled 'Q < 0.9' lists the number of atoms with occupancy less than 0.9.

Mol	Type	Chain	Res	Atoms	RSCC	RSR	B-factors(Å ²)	Q<0.9
3	X4E	A	602	63/63	0.88	0.29	47,98,107,120	0
2	HEM	A	601	43/43	0.97	0.18	37,46,51,57	0

The following is a graphical depiction of the model fit to experimental electron density of all instances of the Ligand of Interest. In addition, ligands with molecular weight > 250 and outliers as shown on the geometry validation Tables will also be included. Each fit is shown from different orientation to approximate a three-dimensional view.





6.5 Other polymers [i](#)

There are no such residues in this entry.