



wwPDB X-ray Structure Validation Summary Report ⓘ

Jan 2, 2024 – 06:49 pm GMT

PDB ID : 5F39
Title : Crystal structure of human KDM4A in complex with compound 37
Authors : Le Bihan, Y.-V.; Dempster, S.; Westwood, I.M.; van Montfort, R.L.M.
Deposited on : 2015-12-02
Resolution : 2.65 Å(reported)

This is a wwPDB X-ray Structure Validation Summary Report for a publicly released PDB entry.

We welcome your comments at validation@mail.wwpdb.org

A user guide is available at

<https://www.wwpdb.org/validation/2017/XrayValidationReportHelp>

with specific help available everywhere you see the ⓘ symbol.

The types of validation reports are described at

<http://www.wwpdb.org/validation/2017/FAQs#types>.

The following versions of software and data (see [references ⓘ](#)) were used in the production of this report:

MolProbity : 4.02b-467
Mogul : 1.8.4, CSD as541be (2020)
Xtriage (Phenix) : 1.13
EDS : 2.36
Percentile statistics : 20191225.v01 (using entries in the PDB archive December 25th 2019)
Refmac : 5.8.0158
CCP4 : 7.0.044 (Gargrove)
Ideal geometry (proteins) : Engh & Huber (2001)
Ideal geometry (DNA, RNA) : Parkinson et al. (1996)
Validation Pipeline (wwPDB-VP) : 2.36

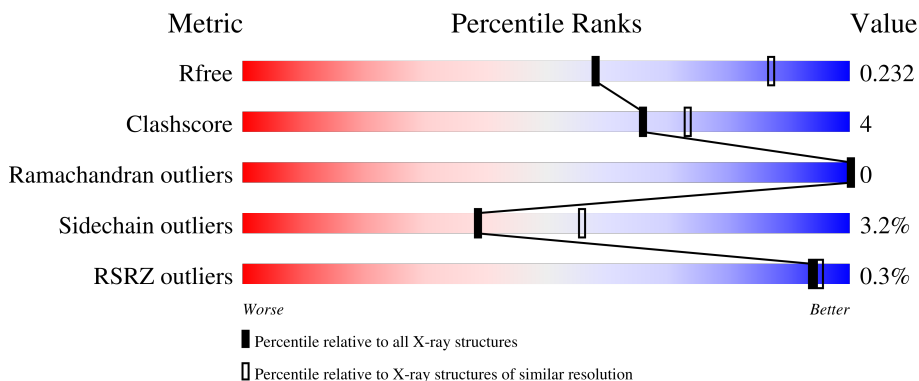
1 Overall quality at a glance

The following experimental techniques were used to determine the structure:

X-RAY DIFFRACTION

The reported resolution of this entry is 2.65 Å.

Percentile scores (ranging between 0-100) for global validation metrics of the entry are shown in the following graphic. The table shows the number of entries on which the scores are based.



Metric	Whole archive (#Entries)	Similar resolution (#Entries, resolution range(Å))
R_{free}	130704	1332 (2.68-2.64)
Clashscore	141614	1374 (2.68-2.64)
Ramachandran outliers	138981	1349 (2.68-2.64)
Sidechain outliers	138945	1349 (2.68-2.64)
RSRZ outliers	127900	1318 (2.68-2.64)

The table below summarises the geometric issues observed across the polymeric chains and their fit to the electron density. The red, orange, yellow and green segments of the lower bar indicate the fraction of residues that contain outliers for ≥ 3 , 2, 1 and 0 types of geometric quality criteria respectively. A grey segment represents the fraction of residues that are not modelled. The numeric value for each fraction is indicated below the corresponding segment, with a dot representing fractions $\leq 5\%$. The upper red bar (where present) indicates the fraction of residues that have poor fit to the electron density. The numeric value is given above the bar.

Mol	Chain	Length	Quality of chain
1	A	360	84% 11% 5%
1	B	360	88% 8% .
1	C	360	87% 9% .
1	D	360	87% 8% .

2 Entry composition [i](#)

There are 5 unique types of molecules in this entry. The entry contains 11319 atoms, of which 0 are hydrogens and 0 are deuteriums.

In the tables below, the ZeroOcc column contains the number of atoms modelled with zero occupancy, the AltConf column contains the number of residues with at least one atom in alternate conformation and the Trace column contains the number of residues modelled with at most 2 atoms.

- Molecule 1 is a protein called Lysine-specific demethylase 4A.

Mol	Chain	Residues	Atoms					ZeroOcc	AltConf	Trace
			Total	C	N	O	S			
1	A	343	2694	1754	432	493	15	0	0	0
1	B	344	2716	1764	446	491	15	0	1	0
1	C	348	2730	1781	439	495	15	0	0	0
1	D	344	2726	1771	452	489	14	0	1	0

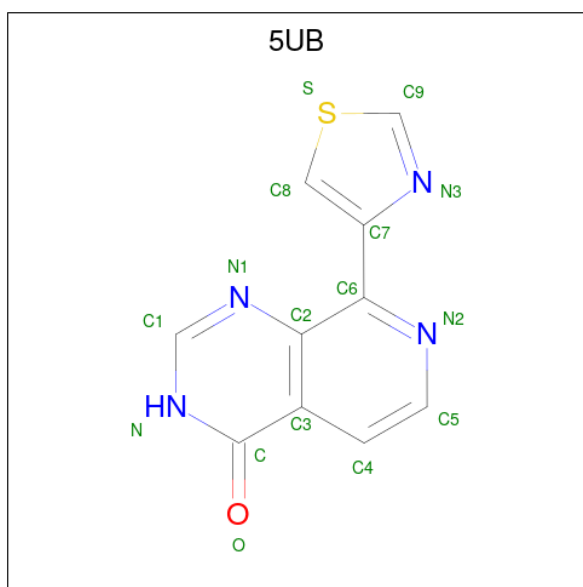
There are 4 discrepancies between the modelled and reference sequences:

Chain	Residue	Modelled	Actual	Comment	Reference
A	0	SER	-	expression tag	UNP O75164
B	0	SER	-	expression tag	UNP O75164
C	0	SER	-	expression tag	UNP O75164
D	0	SER	-	expression tag	UNP O75164

- Molecule 2 is ZINC ION (three-letter code: ZN) (formula: Zn).

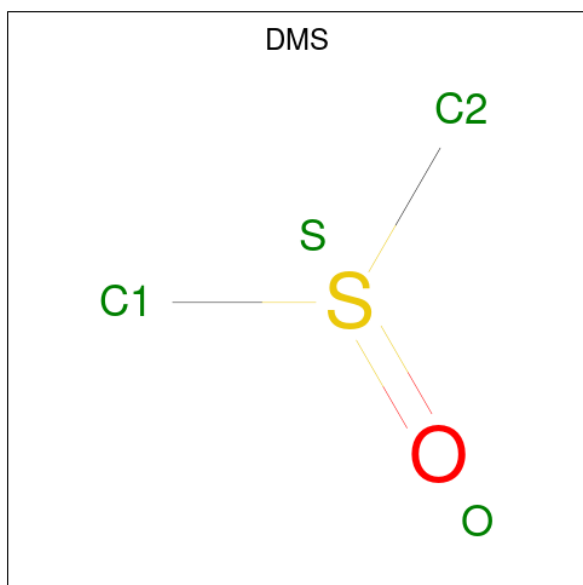
Mol	Chain	Residues	Atoms		ZeroOcc	AltConf
2	A	2	Total 2	Zn 2	0	0
2	B	2	Total 2	Zn 2	0	0
2	C	2	Total 2	Zn 2	0	0
2	D	2	Total 2	Zn 2	0	0

- Molecule 3 is 8-(1,3-thiazol-4-yl)-3 {H}-pyrido[3,4-d]pyrimidin-4-one (three-letter code: 5UB) (formula: C₁₀H₆N₄OS).



Mol	Chain	Residues	Atoms					ZeroOcc	AltConf
			Total	C	N	O	S		
3	A	1	Total	C	N	O	S	0	0
			16	10	4	1	1		
3	B	1	Total	C	N	O	S	0	0
			16	10	4	1	1		
3	C	1	Total	C	N	O	S	0	0
			16	10	4	1	1		
3	D	1	Total	C	N	O	S	0	0
			16	10	4	1	1		

- Molecule 4 is DIMETHYL SULFOXIDE (three-letter code: DMS) (formula: C₂H₆OS).



Mol	Chain	Residues	Atoms				ZeroOcc	AltConf
4	A	1	Total	C	O	S	0	0
			4	2	1	1		
4	A	1	Total	C	O	S	0	0
			4	2	1	1		
4	A	1	Total	C	O	S	0	0
			4	2	1	1		
4	A	1	Total	C	O	S	0	0
			4	2	1	1		
4	B	1	Total	C	O	S	0	0
			4	2	1	1		
4	B	1	Total	C	O	S	0	0
			4	2	1	1		
4	C	1	Total	C	O	S	0	0
			4	2	1	1		
4	C	1	Total	C	O	S	0	0
			4	2	1	1		
4	C	1	Total	C	O	S	0	0
			4	2	1	1		
4	C	1	Total	C	O	S	0	0
			4	2	1	1		
4	D	1	Total	C	O	S	0	0
			4	2	1	1		
4	D	1	Total	C	O	S	0	0
			4	2	1	1		
4	D	1	Total	C	O	S	0	0
			4	2	1	1		

- Molecule 5 is water.

Mol	Chain	Residues	Atoms		ZeroOcc	AltConf
5	A	82	Total	O	0	0
			82	82		
5	B	84	Total	O	0	0
			84	84		
5	C	80	Total	O	0	0
			80	80		
5	D	79	Total	O	0	0
			79	79		

F281	
E327	
D342	
L345	
L354	
LYS	
GLU	
SER	
GLU	
LEU	

4 Data and refinement statistics i

Property	Value	Source
Space group	P 1 21 1	Depositor
Cell constants a, b, c, α , β , γ	58.41Å 102.06Å 143.47Å 90.00° 99.82° 90.00°	Depositor
Resolution (Å)	49.63 – 2.65 49.63 – 2.65	Depositor EDS
% Data completeness (in resolution range)	96.3 (49.63-2.65) 96.3 (49.63-2.65)	Depositor EDS
R_{merge}	0.09	Depositor
R_{sym}	(Not available)	Depositor
$\langle I/\sigma(I) \rangle$ ¹	1.09 (at 2.65Å)	Xtrriage
Refinement program	BUSTER 2.10.2	Depositor
R, R_{free}	0.169 , 0.210 0.185 , 0.232	Depositor DCC
R_{free} test set	2353 reflections (5.06%)	wwPDB-VP
Wilson B-factor (Å ²)	66.2	Xtrriage
Anisotropy	0.226	Xtrriage
Bulk solvent k_{sol} (e/Å ³), B_{sol} (Å ²)	0.27 , 53.3	EDS
L-test for twinning ²	$\langle L \rangle = 0.49$, $\langle L^2 \rangle = 0.33$	Xtrriage
Estimated twinning fraction	0.028 for h,-k,-h-l	Xtrriage
F_o, F_c correlation	0.96	EDS
Total number of atoms	11319	wwPDB-VP
Average B, all atoms (Å ²)	73.0	wwPDB-VP

Xtrriage's analysis on translational NCS is as follows: *The largest off-origin peak in the Patterson function is 19.55% of the height of the origin peak. No significant pseudotranslation is detected.*

¹Intensities estimated from amplitudes.

²Theoretical values of $\langle |L| \rangle$, $\langle L^2 \rangle$ for acentric reflections are 0.5, 0.333 respectively for untwinned datasets, and 0.375, 0.2 for perfectly twinned datasets.

5 Model quality [i](#)

5.1 Standard geometry [i](#)

Bond lengths and bond angles in the following residue types are not validated in this section: 5UB, DMS, ZN

The Z score for a bond length (or angle) is the number of standard deviations the observed value is removed from the expected value. A bond length (or angle) with $|Z| > 5$ is considered an outlier worth inspection. RMSZ is the root-mean-square of all Z scores of the bond lengths (or angles).

Mol	Chain	Bond lengths		Bond angles	
		RMSZ	# Z >5	RMSZ	# Z >5
1	A	0.50	0/2780	0.69	0/3787
1	B	0.51	0/2802	0.69	0/3818
1	C	0.52	0/2816	0.70	0/3835
1	D	0.54	0/2812	0.70	0/3828
All	All	0.52	0/11210	0.69	0/15268

There are no bond length outliers.

There are no bond angle outliers.

There are no chirality outliers.

There are no planarity outliers.

5.2 Too-close contacts [i](#)

In the following table, the Non-H and H(model) columns list the number of non-hydrogen atoms and hydrogen atoms in the chain respectively. The H(added) column lists the number of hydrogen atoms added and optimized by MolProbity. The Clashes column lists the number of clashes within the asymmetric unit, whereas Symm-Clashes lists symmetry-related clashes.

Mol	Chain	Non-H	H(model)	H(added)	Clashes	Symm-Clashes
1	A	2694	0	2454	27	0
1	B	2716	0	2485	14	0
1	C	2730	0	2513	20	0
1	D	2726	0	2506	14	0
2	A	2	0	0	0	0
2	B	2	0	0	0	0
2	C	2	0	0	0	0
2	D	2	0	0	0	0
3	A	16	0	6	4	0

Continued on next page...

Continued from previous page...

Mol	Chain	Non-H	H(model)	H(added)	Clashes	Symm-Clashes
3	B	16	0	6	2	0
3	C	16	0	6	3	0
3	D	16	0	6	2	0
4	A	16	0	24	0	0
4	B	8	0	12	1	0
4	C	20	0	30	1	0
4	D	12	0	18	0	0
5	A	82	0	0	3	0
5	B	84	0	0	1	0
5	C	80	0	0	1	0
5	D	79	0	0	0	0
All	All	11319	0	10066	84	0

The all-atom clashscore is defined as the number of clashes found per 1000 atoms (including hydrogen atoms). The all-atom clashscore for this structure is 4.

The worst 5 of 84 close contacts within the same asymmetric unit are listed below, sorted by their clash magnitude.

Atom-1	Atom-2	Interatomic distance (Å)	Clash overlap (Å)
1:A:9:ASN:HB2	1:A:12:ALA:HB3	1.40	1.00
1:B:74:LEU:HD11	1:B:87:ILE:HD11	1.48	0.95
1:B:74:LEU:HD11	1:B:87:ILE:CD1	2.03	0.88
1:C:19:PRO:HB3	1:C:30:TYR:CE2	2.24	0.73
1:C:150:ILE:HG23	1:C:289:THR:HG22	1.73	0.71

There are no symmetry-related clashes.

5.3 Torsion angles [i](#)

5.3.1 Protein backbone [i](#)

In the following table, the Percentiles column shows the percent Ramachandran outliers of the chain as a percentile score with respect to all X-ray entries followed by that with respect to entries of similar resolution.

The Analysed column shows the number of residues for which the backbone conformation was analysed, and the total number of residues.

Mol	Chain	Analysed	Favoured	Allowed	Outliers	Percentiles
1	A	339/360 (94%)	333 (98%)	6 (2%)	0	100 100

Continued on next page...

Continued from previous page...

Mol	Chain	Analysed	Favoured	Allowed	Outliers	Percentiles	
1	B	343/360 (95%)	336 (98%)	7 (2%)	0	100	100
1	C	346/360 (96%)	338 (98%)	8 (2%)	0	100	100
1	D	341/360 (95%)	335 (98%)	6 (2%)	0	100	100
All	All	1369/1440 (95%)	1342 (98%)	27 (2%)	0	100	100

There are no Ramachandran outliers to report.

5.3.2 Protein sidechains [i](#)

In the following table, the Percentiles column shows the percent sidechain outliers of the chain as a percentile score with respect to all X-ray entries followed by that with respect to entries of similar resolution.

The Analysed column shows the number of residues for which the sidechain conformation was analysed, and the total number of residues.

Mol	Chain	Analysed	Rotameric	Outliers	Percentiles	
1	A	261/316 (83%)	250 (96%)	11 (4%)	30	45
1	B	262/316 (83%)	252 (96%)	10 (4%)	33	49
1	C	267/316 (84%)	262 (98%)	5 (2%)	57	74
1	D	264/316 (84%)	255 (97%)	9 (3%)	37	53
All	All	1054/1264 (83%)	1019 (97%)	35 (3%)	39	54

5 of 35 residues with a non-rotameric sidechain are listed below:

Mol	Chain	Res	Type
1	D	164	SER
1	D	172[A]	ASN
1	D	230	SER
1	B	103	SER
1	B	71	ILE

Sometimes sidechains can be flipped to improve hydrogen bonding and reduce clashes. All (1) such sidechains are listed below:

Mol	Chain	Res	Type
1	D	215	HIS

5.3.3 RNA [i](#)

There are no RNA molecules in this entry.

5.4 Non-standard residues in protein, DNA, RNA chains [i](#)

There are no non-standard protein/DNA/RNA residues in this entry.

5.5 Carbohydrates [i](#)

There are no monosaccharides in this entry.

5.6 Ligand geometry [i](#)

Of 26 ligands modelled in this entry, 8 are monoatomic - leaving 18 for Mogul analysis.

In the following table, the Counts columns list the number of bonds (or angles) for which Mogul statistics could be retrieved, the number of bonds (or angles) that are observed in the model and the number of bonds (or angles) that are defined in the Chemical Component Dictionary. The Link column lists molecule types, if any, to which the group is linked. The Z score for a bond length (or angle) is the number of standard deviations the observed value is removed from the expected value. A bond length (or angle) with $|Z| > 2$ is considered an outlier worth inspection. RMSZ is the root-mean-square of all Z scores of the bond lengths (or angles).

Mol	Type	Chain	Res	Link	Bond lengths			Bond angles		
					Counts	RMSZ	$\# Z > 2$	Counts	RMSZ	$\# Z > 2$
3	5UB	C	403	2	15,18,18	0.79	0	15,25,25	0.81	0
4	DMS	D	406	-	3,3,3	0.29	0	3,3,3	0.54	0
4	DMS	A	405	-	3,3,3	0.25	0	3,3,3	0.44	0
4	DMS	C	404	-	3,3,3	0.18	0	3,3,3	0.41	0
3	5UB	D	403	2	15,18,18	0.77	0	15,25,25	0.83	0
4	DMS	A	406	-	3,3,3	0.28	0	3,3,3	0.44	0
4	DMS	C	408	-	3,3,3	0.34	0	3,3,3	0.28	0
4	DMS	D	404	-	3,3,3	0.40	0	3,3,3	0.45	0
4	DMS	B	404	-	3,3,3	0.19	0	3,3,3	0.48	0
4	DMS	C	405	-	3,3,3	0.31	0	3,3,3	0.76	0
4	DMS	D	405	-	3,3,3	0.37	0	3,3,3	0.75	0
4	DMS	B	405	-	3,3,3	0.28	0	3,3,3	0.71	0
3	5UB	B	403	2	15,18,18	0.75	0	15,25,25	0.87	0
4	DMS	C	407	-	3,3,3	0.27	0	3,3,3	0.18	0
4	DMS	A	404	-	3,3,3	0.20	0	3,3,3	0.39	0
3	5UB	A	403	2	15,18,18	0.78	0	15,25,25	0.82	0
4	DMS	C	406	-	3,3,3	0.34	0	3,3,3	0.32	0
4	DMS	A	407	-	3,3,3	0.35	0	3,3,3	0.20	0

In the following table, the Chirals column lists the number of chiral outliers, the number of chiral centers analysed, the number of these observed in the model and the number defined in the Chemical Component Dictionary. Similar counts are reported in the Torsion and Rings columns. '-' means no outliers of that kind were identified.

Mol	Type	Chain	Res	Link	Chirals	Torsions	Rings
3	5UB	B	403	2	-	0/1/4/4	0/3/3/3
3	5UB	D	403	2	-	0/1/4/4	0/3/3/3
3	5UB	C	403	2	-	0/1/4/4	0/3/3/3
3	5UB	A	403	2	-	0/1/4/4	0/3/3/3

There are no bond length outliers.

There are no bond angle outliers.

There are no chirality outliers.

There are no torsion outliers.

There are no ring outliers.

6 monomers are involved in 13 short contacts:

Mol	Chain	Res	Type	Clashes	Symm-Clashes
3	C	403	5UB	3	0
3	D	403	5UB	2	0
4	C	405	DMS	1	0
4	B	405	DMS	1	0
3	B	403	5UB	2	0
3	A	403	5UB	4	0

5.7 Other polymers [i](#)

There are no such residues in this entry.

5.8 Polymer linkage issues [i](#)

There are no chain breaks in this entry.

6 Fit of model and data [i](#)

6.1 Protein, DNA and RNA chains [i](#)

In the following table, the column labelled '#RSRZ > 2' contains the number (and percentage) of RSRZ outliers, followed by percent RSRZ outliers for the chain as percentile scores relative to all X-ray entries and entries of similar resolution. The OWAB column contains the minimum, median, 95th percentile and maximum values of the occupancy-weighted average B-factor per residue. The column labelled 'Q < 0.9' lists the number of (and percentage) of residues with an average occupancy less than 0.9.

Mol	Chain	Analysed	<RSRZ>	#RSRZ>2	OWAB(Å ²)	Q<0.9
1	A	343/360 (95%)	-0.29	1 (0%) 94 95	48, 72, 112, 140	0
1	B	344/360 (95%)	-0.44	1 (0%) 94 95	48, 72, 112, 133	0
1	C	348/360 (96%)	-0.42	2 (0%) 89 89	46, 70, 111, 130	0
1	D	344/360 (95%)	-0.41	0 100 100	48, 67, 100, 123	0
All	All	1379/1440 (95%)	-0.39	4 (0%) 94 95	46, 71, 110, 140	0

All (4) RSRZ outliers are listed below:

Mol	Chain	Res	Type	RSRZ
1	C	226	PHE	2.9
1	B	312	MET	2.3
1	A	326	PRO	2.1
1	C	311	ASP	2.1

6.2 Non-standard residues in protein, DNA, RNA chains [i](#)

There are no non-standard protein/DNA/RNA residues in this entry.

6.3 Carbohydrates [i](#)

There are no monosaccharides in this entry.

6.4 Ligands [i](#)

In the following table, the Atoms column lists the number of modelled atoms in the group and the number defined in the chemical component dictionary. The B-factors column lists the minimum, median, 95th percentile and maximum values of B factors of atoms in the group. The column labelled 'Q < 0.9' lists the number of atoms with occupancy less than 0.9.

Mol	Type	Chain	Res	Atoms	RSCC	RSR	B-factors(\AA^2)	Q<0.9
4	DMS	C	406	4/4	0.82	0.32	121,122,123,123	0
4	DMS	C	407	4/4	0.89	0.18	96,97,97,97	4
4	DMS	D	406	4/4	0.89	0.24	99,103,104,104	0
4	DMS	A	407	4/4	0.90	0.25	90,91,91,92	4
4	DMS	A	406	4/4	0.91	0.22	93,96,96,97	4
4	DMS	C	408	4/4	0.92	0.41	81,83,84,85	4
4	DMS	B	405	4/4	0.94	0.24	82,83,84,85	4
4	DMS	A	404	4/4	0.96	0.22	75,75,78,78	4
4	DMS	D	404	4/4	0.96	0.15	83,85,85,87	4
3	5UB	A	403	16/16	0.96	0.17	53,58,74,76	16
3	5UB	D	403	16/16	0.97	0.18	36,42,68,70	16
3	5UB	B	403	16/16	0.97	0.14	40,45,67,67	16
4	DMS	C	405	4/4	0.97	0.20	88,88,89,91	4
4	DMS	D	405	4/4	0.97	0.34	78,78,78,79	4
3	5UB	C	403	16/16	0.97	0.16	35,41,63,63	16
4	DMS	C	404	4/4	0.98	0.20	85,85,87,87	0
4	DMS	A	405	4/4	0.98	0.34	81,84,86,86	4
2	ZN	B	401	1/1	0.99	0.15	62,62,62,62	0
2	ZN	B	402	1/1	0.99	0.10	68,68,68,68	1
2	ZN	C	401	1/1	0.99	0.15	63,63,63,63	0
2	ZN	C	402	1/1	0.99	0.12	75,75,75,75	0
2	ZN	D	401	1/1	0.99	0.14	64,64,64,64	0
2	ZN	A	401	1/1	0.99	0.17	64,64,64,64	0
4	DMS	B	404	4/4	0.99	0.16	76,79,79,82	4
2	ZN	A	402	1/1	0.99	0.17	66,66,66,66	1
2	ZN	D	402	1/1	1.00	0.15	67,67,67,67	0

6.5 Other polymers [\(i\)](#)

There are no such residues in this entry.