



# wwPDB X-ray Structure Validation Summary Report ⓘ

Jan 29, 2024 – 06:45 PM EST

PDB ID : 1F4A  
Title : E. COLI (LACZ) BETA-GALACTOSIDASE (NCS CONSTRAINED MONOMER-ORTHORHOMBIC)  
Authors : Juers, D.H.; Jacobson, R.H.; Wigley, D.; Zhang, X.J.; Huber, R.E.; Tronrud, D.E.; Matthews, B.W.  
Deposited on : 2000-06-07  
Resolution : 2.80 Å(reported)

This is a wwPDB X-ray Structure Validation Summary Report for a publicly released PDB entry.

We welcome your comments at [validation@mail.wwpdb.org](mailto:validation@mail.wwpdb.org)

A user guide is available at

<https://www.wwpdb.org/validation/2017/XrayValidationReportHelp>

with specific help available everywhere you see the ⓘ symbol.

The types of validation reports are described at

<http://www.wwpdb.org/validation/2017/FAQs#types>.

---

The following versions of software and data (see [references ⓘ](#)) were used in the production of this report:

MolProbity : 4.02b-467  
Xtriage (Phenix) : 1.13  
EDS : 2.36  
Percentile statistics : 20191225.v01 (using entries in the PDB archive December 25th 2019)  
Refmac : 5.8.0158  
CCP4 : 7.0.044 (Gargrove)  
Ideal geometry (proteins) : Engh & Huber (2001)  
Ideal geometry (DNA, RNA) : Parkinson et al. (1996)  
Validation Pipeline (wwPDB-VP) : 2.36

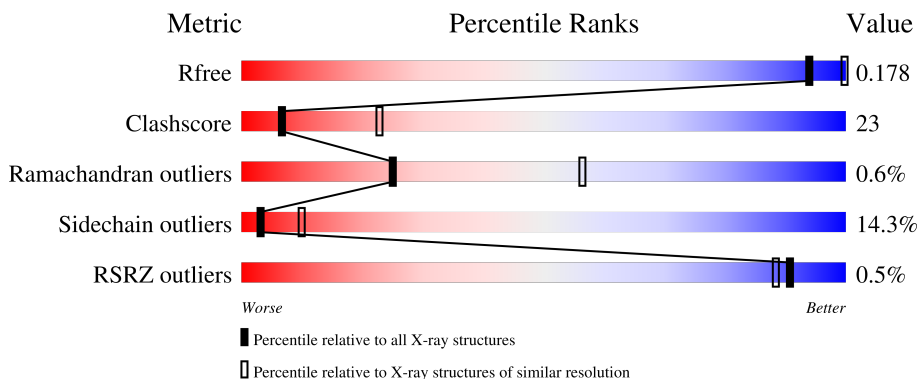
# 1 Overall quality at a glance

The following experimental techniques were used to determine the structure:

*X-RAY DIFFRACTION*

The reported resolution of this entry is 2.80 Å.

Percentile scores (ranging between 0-100) for global validation metrics of the entry are shown in the following graphic. The table shows the number of entries on which the scores are based.



Metric	Whole archive (#Entries)	Similar resolution (#Entries, resolution range(Å))
$R_{free}$	130704	3140 (2.80-2.80)
Clashscore	141614	3569 (2.80-2.80)
Ramachandran outliers	138981	3498 (2.80-2.80)
Sidechain outliers	138945	3500 (2.80-2.80)
RSRZ outliers	127900	3078 (2.80-2.80)

The table below summarises the geometric issues observed across the polymeric chains and their fit to the electron density. The red, orange, yellow and green segments of the lower bar indicate the fraction of residues that contain outliers for  $\geq 3$ , 2, 1 and 0 types of geometric quality criteria respectively. A grey segment represents the fraction of residues that are not modelled. The numeric value for each fraction is indicated below the corresponding segment, with a dot representing fractions  $\leq 5\%$ . The upper red bar (where present) indicates the fraction of residues that have poor fit to the electron density. The numeric value is given above the bar.

Mol	Chain	Length	Quality of chain
1	A	1021	 49% 38% 11% .
1	B	1021	 49% 38% 11% .
1	C	1021	 49% 38% 11% .
1	D	1021	 49% 38% 11% .

## 2 Entry composition [i](#)

There are 3 unique types of molecules in this entry. The entry contains 34424 atoms, of which 0 are hydrogens and 0 are deuteriums.

In the tables below, the ZeroOcc column contains the number of atoms modelled with zero occupancy, the AltConf column contains the number of residues with at least one atom in alternate conformation and the Trace column contains the number of residues modelled with at most 2 atoms.

- Molecule 1 is a protein called BETA-GALACTOSIDASE.

Mol	Chain	Residues	Atoms					ZeroOcc	AltConf	Trace
			Total	C	N	O	S			
1	A	1021	8238	5209	1466	1525	38	84	7	0
1	B	1021	8238	5209	1466	1525	38	84	7	0
1	C	1021	8238	5209	1466	1525	38	84	7	0
1	D	1021	8238	5209	1466	1525	38	84	7	0

- Molecule 2 is MAGNESIUM ION (three-letter code: MG) (formula: Mg).

Mol	Chain	Residues	Atoms		ZeroOcc	AltConf
2	A	2	Total 2	Mg 2	0	0
2	B	2	Total 2	Mg 2	0	0
2	C	2	Total 2	Mg 2	0	0
2	D	2	Total 2	Mg 2	0	0

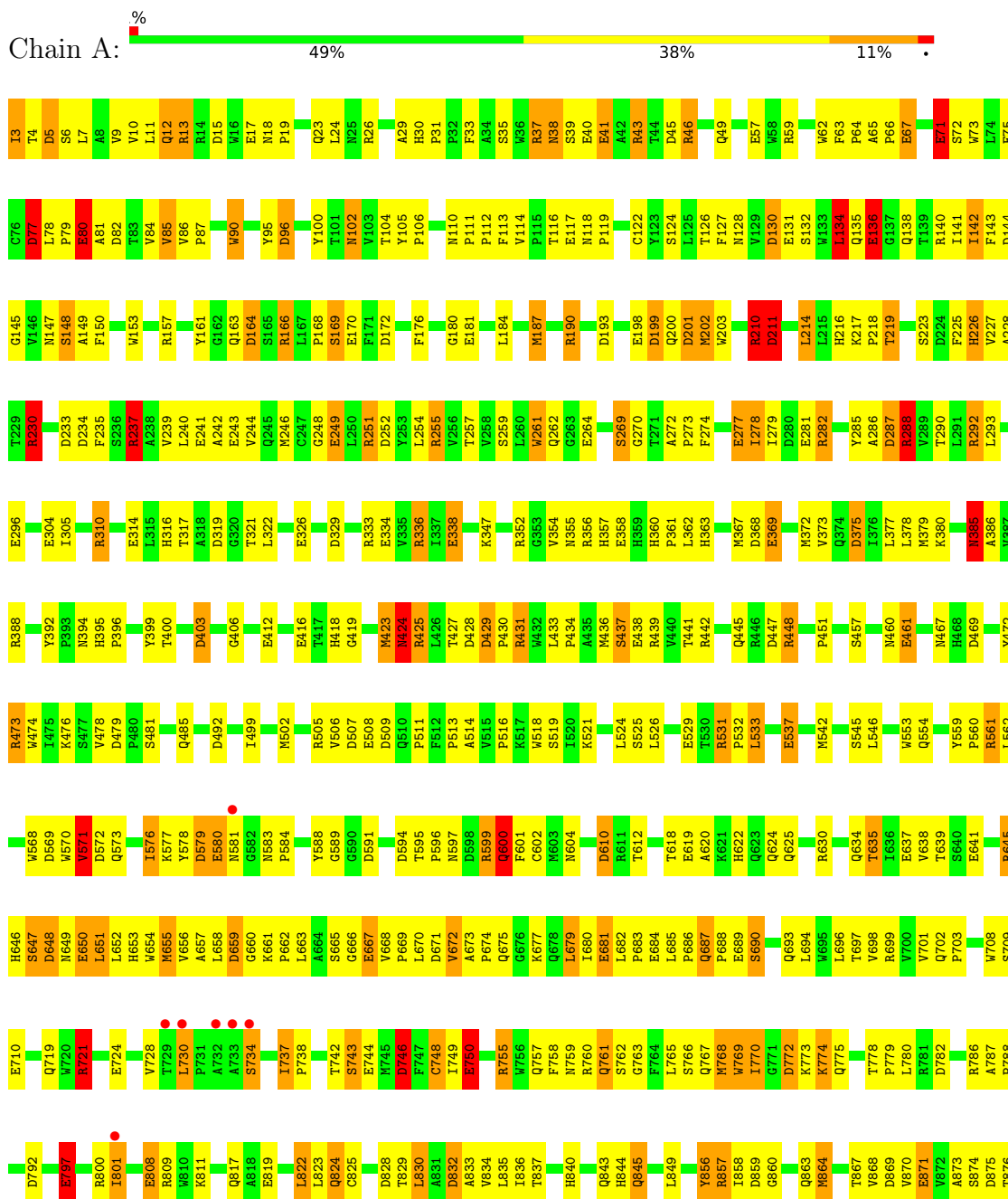
- Molecule 3 is water.

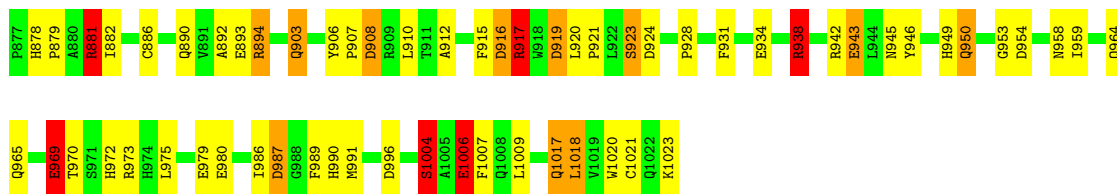
Mol	Chain	Residues	Atoms		ZeroOcc	AltConf
3	A	365	Total 365	O 365	0	0
3	B	366	Total 366	O 366	0	0
3	C	367	Total 367	O 367	0	0
3	D	366	Total 366	O 366	0	0

### 3 Residue-property plots [i](#)

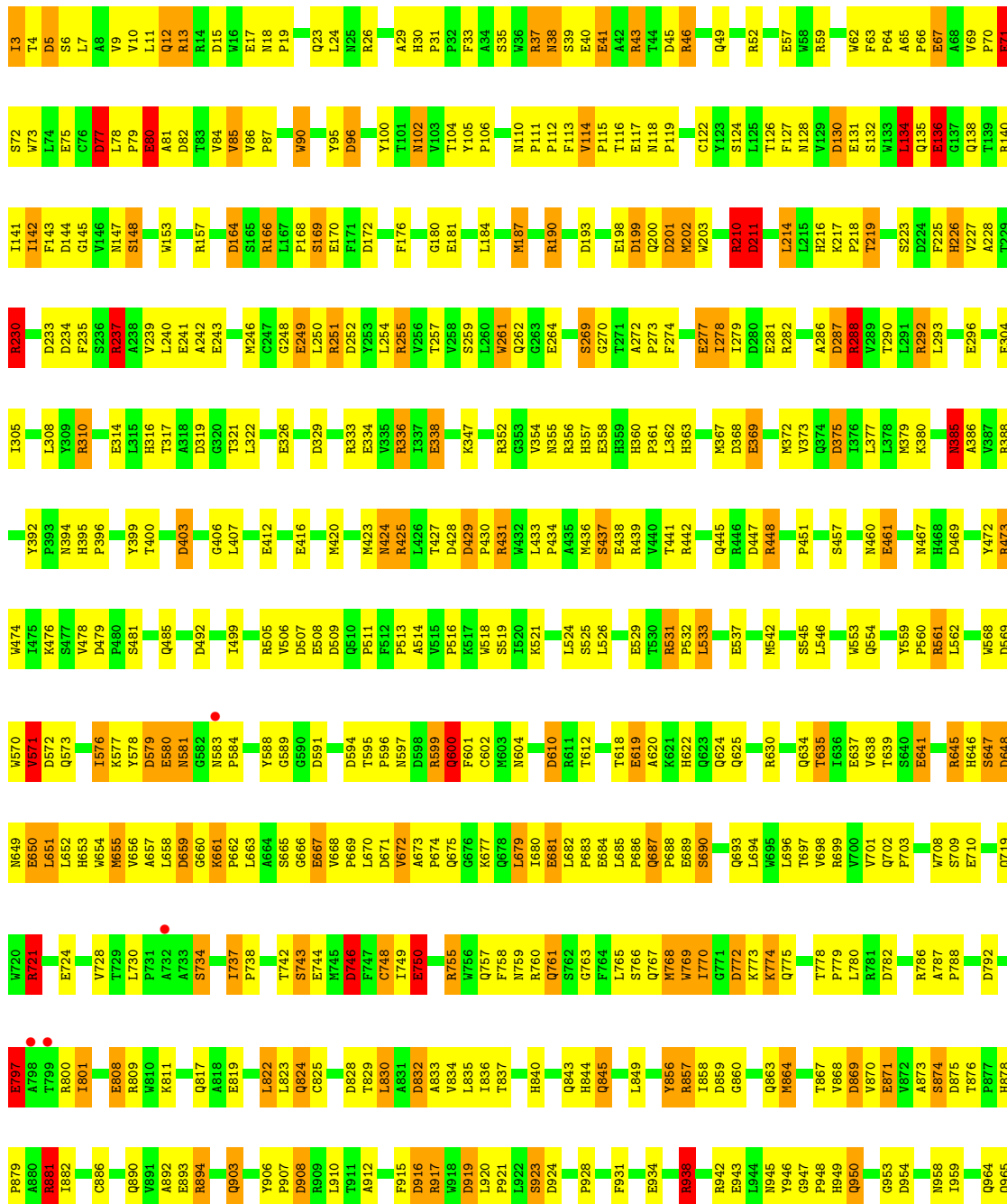
These plots are drawn for all protein, RNA, DNA and oligosaccharide chains in the entry. The first graphic for a chain summarises the proportions of the various outlier classes displayed in the second graphic. The second graphic shows the sequence view annotated by issues in geometry and electron density. Residues are color-coded according to the number of geometric quality criteria for which they contain at least one outlier: green = 0, yellow = 1, orange = 2 and red = 3 or more. A red dot above a residue indicates a poor fit to the electron density ( $RSRZ > 2$ ). Stretches of 2 or more consecutive residues without any outlier are shown as a green connector. Residues present in the sample, but not in the model, are shown in grey.

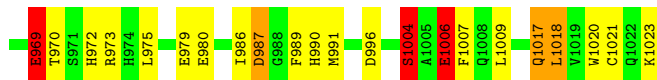
#### • Molecule 1: BETA-GALACTOSIDASE



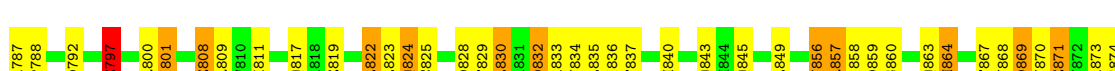
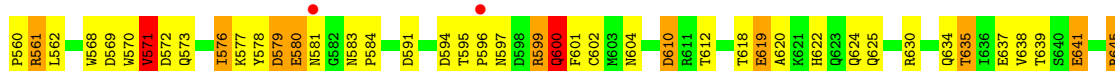
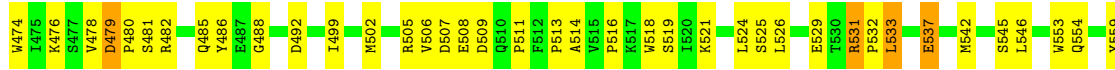
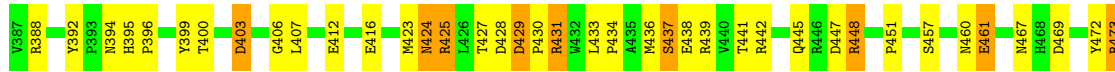
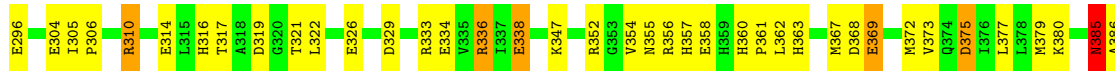
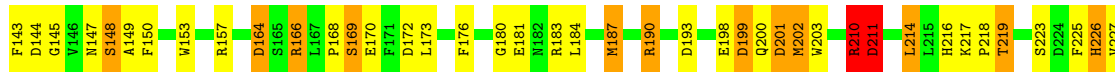
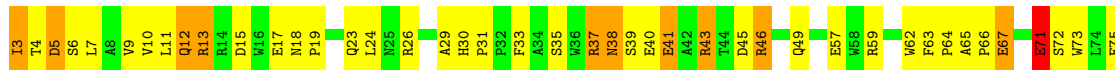


● Molecule 1: BETA-GALACTOSIDASE



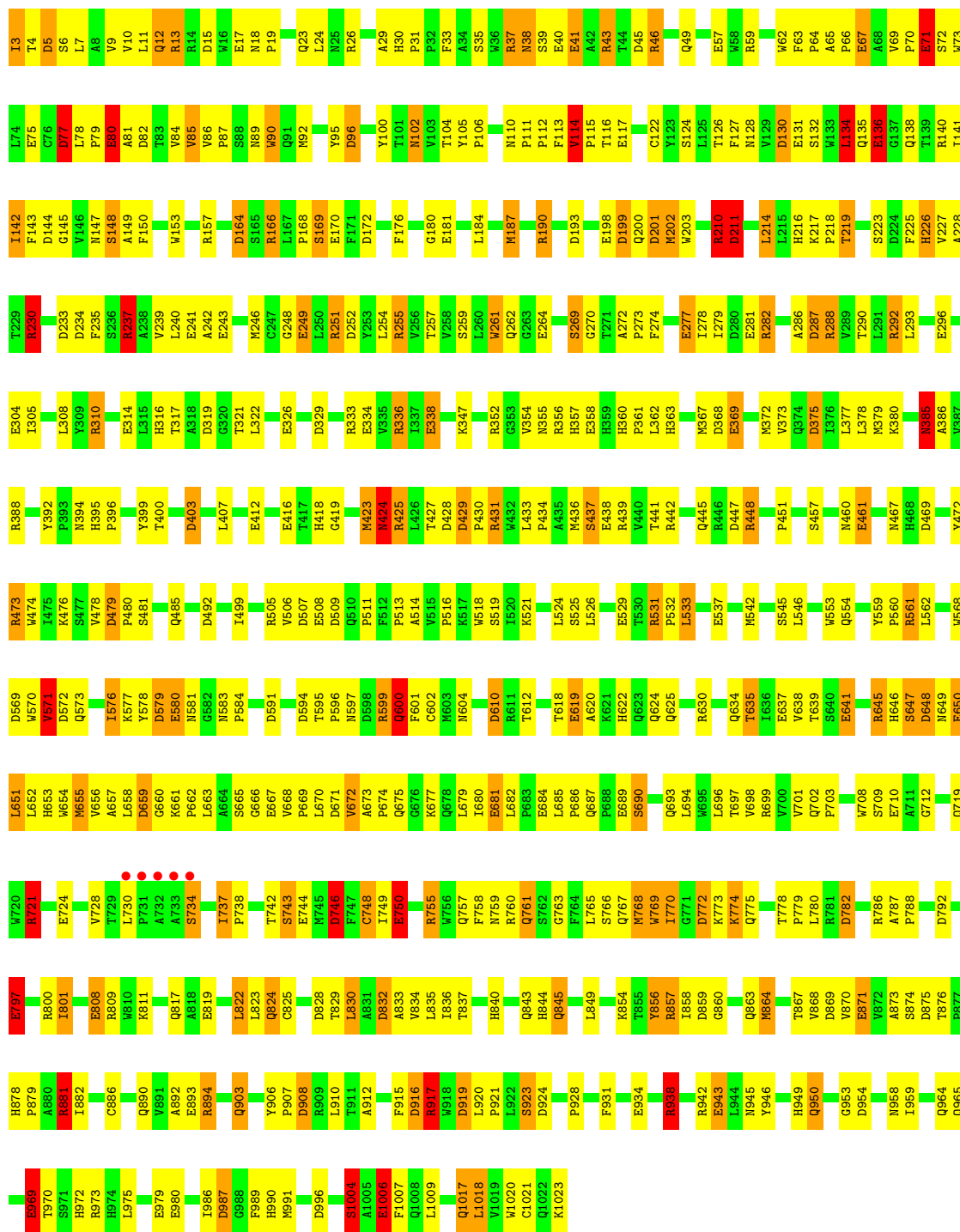


• Molecule 1: BETA-GALACTOSIDASE



• Molecule 1: BETA-GALACTOSIDASE

Chain D:  49% 38% 11%



## 4 Data and refinement statistics

Property	Value	Source
Space group	P 21 21 21	Depositor
Cell constants a, b, c, $\alpha$ , $\beta$ , $\gamma$	153.40Å 173.40Å 204.40Å 90.00° 90.00° 90.00°	Depositor
Resolution (Å)	25.00 – 2.80 24.97 – 2.82	Depositor EDS
% Data completeness (in resolution range)	88.0 (25.00-2.80) 80.5 (24.97-2.82)	Depositor EDS
$R_{merge}$	0.10	Depositor
$R_{sym}$	(Not available)	Depositor
$\langle I/\sigma(I) \rangle$ <sup>1</sup>	1.68 (at 2.80Å)	Xtrriage
Refinement program	TNT 5E	Depositor
R, $R_{free}$	0.167 , 0.198 0.149 , 0.178	Depositor DCC
$R_{free}$ test set	1590 reflections (1.50%)	wwPDB-VP
Wilson B-factor (Å <sup>2</sup> )	40.7	Xtrriage
Anisotropy	0.148	Xtrriage
Bulk solvent $k_{sol}$ (e/Å <sup>3</sup> ), $B_{sol}$ (Å <sup>2</sup> )	0.26 , 100.6	EDS
L-test for twinning <sup>2</sup>	$\langle  L  \rangle = 0.50$ , $\langle L^2 \rangle = 0.33$	Xtrriage
Estimated twinning fraction	No twinning to report.	Xtrriage
$F_o, F_c$ correlation	0.96	EDS
Total number of atoms	34424	wwPDB-VP
Average B, all atoms (Å <sup>2</sup> )	34.0	wwPDB-VP

Xtrriage's analysis on translational NCS is as follows: *The analyses of the Patterson function reveals a significant off-origin peak that is 41.86 % of the origin peak, indicating pseudo-translational symmetry. The chance of finding a peak of this or larger height randomly in a structure without pseudo-translational symmetry is equal to 2.2179e-04. The detected translational NCS is most likely also responsible for the elevated intensity ratio.*

<sup>1</sup>Intensities estimated from amplitudes.

<sup>2</sup>Theoretical values of  $\langle |L| \rangle$ ,  $\langle L^2 \rangle$  for acentric reflections are 0.5, 0.333 respectively for untwinned datasets, and 0.375, 0.2 for perfectly twinned datasets.



## 5 Model quality [i](#)

### 5.1 Standard geometry [i](#)

Bond lengths and bond angles in the following residue types are not validated in this section: MG

The Z score for a bond length (or angle) is the number of standard deviations the observed value is removed from the expected value. A bond length (or angle) with  $|Z| > 5$  is considered an outlier worth inspection. RMSZ is the root-mean-square of all Z scores of the bond lengths (or angles).

Mol	Chain	Bond lengths		Bond angles	
		RMSZ	# Z  >5	RMSZ	# Z  >5
1	A	1.08	52/8515 (0.6%)	1.61	173/11615 (1.5%)
1	B	1.08	52/8515 (0.6%)	1.61	175/11615 (1.5%)
1	C	1.08	52/8515 (0.6%)	1.61	174/11615 (1.5%)
1	D	1.08	52/8515 (0.6%)	1.61	176/11615 (1.5%)
All	All	1.08	208/34060 (0.6%)	1.61	698/46460 (1.5%)

The worst 5 of 208 bond length outliers are listed below:

Mol	Chain	Res	Type	Atoms	Z	Observed(Å)	Ideal(Å)
1	A	75	GLU	CD-OE2	9.53	1.36	1.25
1	C	75	GLU	CD-OE2	9.53	1.36	1.25
1	D	75	GLU	CD-OE2	9.49	1.36	1.25
1	B	75	GLU	CD-OE2	9.46	1.36	1.25
1	D	710	GLU	CD-OE2	7.62	1.34	1.25

The worst 5 of 698 bond angle outliers are listed below:

Mol	Chain	Res	Type	Atoms	Z	Observed(°)	Ideal(°)
1	B	809[A]	ARG	NE-CZ-NH1	11.76	126.18	120.30
1	B	809[B]	ARG	NE-CZ-NH1	11.76	126.18	120.30
1	A	809[A]	ARG	NE-CZ-NH1	11.62	126.11	120.30
1	A	809[B]	ARG	NE-CZ-NH1	11.62	126.11	120.30
1	D	809[A]	ARG	NE-CZ-NH1	11.61	126.11	120.30

There are no chirality outliers.

There are no planarity outliers.

## 5.2 Too-close contacts [i](#)

In the following table, the Non-H and H(model) columns list the number of non-hydrogen atoms and hydrogen atoms in the chain respectively. The H(added) column lists the number of hydrogen atoms added and optimized by MolProbity. The Clashes column lists the number of clashes within the asymmetric unit, whereas Symm-Clashes lists symmetry-related clashes.

Mol	Chain	Non-H	H(model)	H(added)	Clashes	Symm-Clashes
1	A	8238	0	7824	394	0
1	B	8238	0	7824	374	0
1	C	8238	0	7824	379	0
1	D	8238	0	7824	374	0
2	A	2	0	0	0	0
2	B	2	0	0	0	0
2	C	2	0	0	0	0
2	D	2	0	0	0	0
3	A	365	0	0	10	0
3	B	366	0	0	10	0
3	C	367	0	0	10	0
3	D	366	0	0	10	0
All	All	34424	0	31296	1496	0

The all-atom clashscore is defined as the number of clashes found per 1000 atoms (including hydrogen atoms). The all-atom clashscore for this structure is 23.

The worst 5 of 1496 close contacts within the same asymmetric unit are listed below, sorted by their clash magnitude.

Atom-1	Atom-2	Interatomic distance (Å)	Clash overlap (Å)
1:B:427:THR:HA	1:B:436:MET:HE1	1.21	1.11
1:B:746:ASP:HA	1:B:760:ARG:HG3	1.34	1.10
1:A:746:ASP:HA	1:A:760:ARG:HG3	1.34	1.09
1:D:746:ASP:HA	1:D:760:ARG:HG3	1.34	1.09
1:C:427:THR:HA	1:C:436:MET:HE1	1.28	1.08

There are no symmetry-related clashes.

## 5.3 Torsion angles [i](#)

### 5.3.1 Protein backbone [i](#)

In the following table, the Percentiles column shows the percent Ramachandran outliers of the chain as a percentile score with respect to all X-ray entries followed by that with respect to entries of similar resolution.

The Analysed column shows the number of residues for which the backbone conformation was analysed, and the total number of residues.

Mol	Chain	Analysed	Favoured	Allowed	Outliers	Percentiles	
1	A	1026/1021 (100%)	953 (93%)	67 (6%)	6 (1%)	25	56
1	B	1026/1021 (100%)	953 (93%)	67 (6%)	6 (1%)	25	56
1	C	1026/1021 (100%)	953 (93%)	67 (6%)	6 (1%)	25	56
1	D	1026/1021 (100%)	953 (93%)	67 (6%)	6 (1%)	25	56
All	All	4104/4084 (100%)	3812 (93%)	268 (6%)	24 (1%)	25	56

5 of 24 Ramachandran outliers are listed below:

Mol	Chain	Res	Type
1	A	647	SER
1	B	647	SER
1	C	647	SER
1	D	647	SER
1	A	77	ASP

### 5.3.2 Protein sidechains [i](#)

In the following table, the Percentiles column shows the percent sidechain outliers of the chain as a percentile score with respect to all X-ray entries followed by that with respect to entries of similar resolution.

The Analysed column shows the number of residues for which the sidechain conformation was analysed, and the total number of residues.

Mol	Chain	Analysed	Rotameric	Outliers	Percentiles	
1	A	880/873 (101%)	755 (86%)	125 (14%)	3	10
1	B	880/873 (101%)	755 (86%)	125 (14%)	3	10
1	C	880/873 (101%)	755 (86%)	125 (14%)	3	10
1	D	880/873 (101%)	755 (86%)	125 (14%)	3	10
All	All	3520/3492 (101%)	3020 (86%)	500 (14%)	3	10

5 of 500 residues with a non-rotameric sidechain are listed below:

Mol	Chain	Res	Type
1	B	856	TYR
1	D	600	GLN
1	C	259	SER

*Continued on next page...*

*Continued from previous page...*

Mol	Chain	Res	Type
1	D	554	GLN
1	D	801	ILE

Sometimes sidechains can be flipped to improve hydrogen bonding and reduce clashes. 5 of 94 such sidechains are listed below:

Mol	Chain	Res	Type
1	C	424	ASN
1	D	38	ASN
1	C	554	GLN
1	C	634	GLN
1	D	216	HIS

### 5.3.3 RNA [i](#)

There are no RNA molecules in this entry.

## 5.4 Non-standard residues in protein, DNA, RNA chains [i](#)

There are no non-standard protein/DNA/RNA residues in this entry.

## 5.5 Carbohydrates [i](#)

There are no monosaccharides in this entry.

## 5.6 Ligand geometry [i](#)

Of 8 ligands modelled in this entry, 8 are monoatomic - leaving 0 for Mogul analysis.

There are no bond length outliers.

There are no bond angle outliers.

There are no chirality outliers.

There are no torsion outliers.

There are no ring outliers.

No monomer is involved in short contacts.

## 5.7 Other polymers [i](#)

There are no such residues in this entry.

## 5.8 Polymer linkage issues [i](#)

There are no chain breaks in this entry.

## 6 Fit of model and data [i](#)

### 6.1 Protein, DNA and RNA chains [i](#)

In the following table, the column labelled ‘#RSRZ > 2’ contains the number (and percentage) of RSRZ outliers, followed by percent RSRZ outliers for the chain as percentile scores relative to all X-ray entries and entries of similar resolution. The OWAB column contains the minimum, median, 95<sup>th</sup> percentile and maximum values of the occupancy-weighted average B-factor per residue. The column labelled ‘Q < 0.9’ lists the number of (and percentage) of residues with an average occupancy less than 0.9.

Mol	Chain	Analysed	<RSRZ>	#RSRZ>2	OWAB(Å <sup>2</sup> )	Q<0.9
1	A	1021/1021 (100%)	-0.82	7 (0%) 87 84	8, 29, 70, 100	19 (1%)
1	B	1021/1021 (100%)	-0.82	4 (0%) 92 91	8, 29, 70, 100	19 (1%)
1	C	1021/1021 (100%)	-0.85	4 (0%) 92 91	8, 29, 70, 100	19 (1%)
1	D	1021/1021 (100%)	-0.82	5 (0%) 91 88	8, 29, 70, 100	19 (1%)
All	All	4084/4084 (100%)	-0.83	20 (0%) 91 88	8, 29, 71, 100	76 (1%)

The worst 5 of 20 RSRZ outliers are listed below:

Mol	Chain	Res	Type	RSRZ
1	D	732	ALA	4.5
1	A	732	ALA	4.1
1	C	581	ASN	3.7
1	A	581	ASN	3.3
1	B	732	ALA	3.2

### 6.2 Non-standard residues in protein, DNA, RNA chains [i](#)

There are no non-standard protein/DNA/RNA residues in this entry.

### 6.3 Carbohydrates [i](#)

There are no monosaccharides in this entry.

### 6.4 Ligands [i](#)

In the following table, the Atoms column lists the number of modelled atoms in the group and the number defined in the chemical component dictionary. The B-factors column lists the minimum, median, 95<sup>th</sup> percentile and maximum values of B factors of atoms in the group. The column labelled ‘Q < 0.9’ lists the number of atoms with occupancy less than 0.9.

Mol	Type	Chain	Res	Atoms	RSCC	RSR	B-factors( $\text{\AA}^2$ )	Q<0.9
2	MG	B	3002	1/1	0.93	0.09	31,31,31,31	0
2	MG	A	3001	1/1	0.96	0.08	28,28,28,28	0
2	MG	C	3002	1/1	0.96	0.09	31,31,31,31	0
2	MG	D	3002	1/1	0.96	0.12	31,31,31,31	0
2	MG	A	3002	1/1	0.98	0.11	31,31,31,31	0
2	MG	B	3001	1/1	0.99	0.08	28,28,28,28	0
2	MG	D	3001	1/1	0.99	0.08	28,28,28,28	0
2	MG	C	3001	1/1	0.99	0.05	28,28,28,28	0

## 6.5 Other polymers [i](#)

There are no such residues in this entry.