



# Full wwPDB X-ray Structure Validation Report ⓘ

Jan 3, 2024 – 07:24 pm GMT

PDB ID : 5FEW  
Title : HydE from *T. maritima* in complex with S-adenosyl-L-cysteine (final product)  
Authors : Rohac, R.; Amara, P.; Benjdia, A.; Martin, L.; Ruffie, P.; Favier, A.; Bertheau, O.; Mouesca, J.M.; Fontecilla-Camps, J.C.; Nicolet, Y.  
Deposited on : 2015-12-17  
Resolution : 1.17 Å (reported)

This is a Full wwPDB X-ray Structure Validation Report for a publicly released PDB entry.

We welcome your comments at [validation@mail.wwpdb.org](mailto:validation@mail.wwpdb.org)

A user guide is available at

<https://www.wwpdb.org/validation/2017/XrayValidationReportHelp>

with specific help available everywhere you see the ⓘ symbol.

The types of validation reports are described at

<http://www.wwpdb.org/validation/2017/FAQs#types>.

---

The following versions of software and data (see [references ⓘ](#)) were used in the production of this report:

MolProbity : 4.02b-467  
Mogul : 1.8.4, CSD as541be (2020)  
Xtriage (Phenix) : 1.13  
EDS : 2.36  
buster-report : 1.1.7 (2018)  
Percentile statistics : 20191225.v01 (using entries in the PDB archive December 25th 2019)  
Refmac : 5.8.0158  
CCP4 : 7.0.044 (Gargrove)  
Ideal geometry (proteins) : Engh & Huber (2001)  
Ideal geometry (DNA, RNA) : Parkinson et al. (1996)  
Validation Pipeline (wwPDB-VP) : 2.36

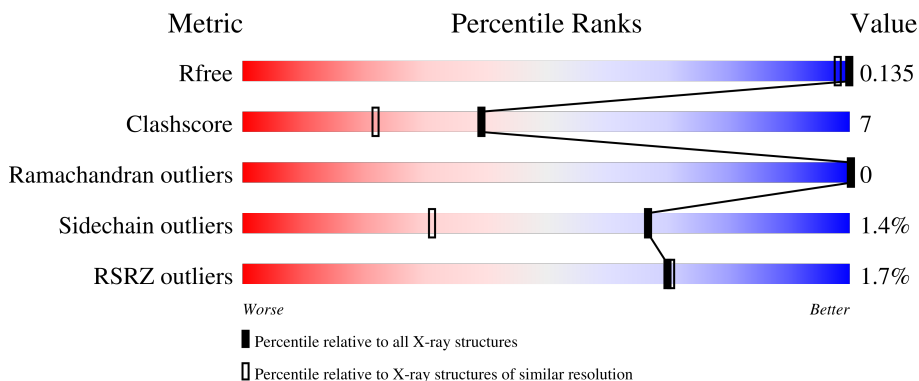
# 1 Overall quality at a glance

The following experimental techniques were used to determine the structure:

*X-RAY DIFFRACTION*

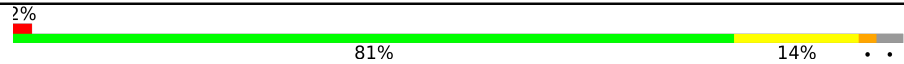
The reported resolution of this entry is 1.17 Å.

Percentile scores (ranging between 0-100) for global validation metrics of the entry are shown in the following graphic. The table shows the number of entries on which the scores are based.



Metric	Whole archive (#Entries)	Similar resolution (#Entries, resolution range(Å))
$R_{free}$	130704	1123 (1.20-1.16)
Clashscore	141614	1182 (1.20-1.16)
Ramachandran outliers	138981	1134 (1.20-1.16)
Sidechain outliers	138945	1134 (1.20-1.16)
RSRZ outliers	127900	1102 (1.20-1.16)

The table below summarises the geometric issues observed across the polymeric chains and their fit to the electron density. The red, orange, yellow and green segments of the lower bar indicate the fraction of residues that contain outliers for  $\geq 3$ , 2, 1 and 0 types of geometric quality criteria respectively. A grey segment represents the fraction of residues that are not modelled. The numeric value for each fraction is indicated below the corresponding segment, with a dot representing fractions  $\leq 5\%$ . The upper red bar (where present) indicates the fraction of residues that have poor fit to the electron density. The numeric value is given above the bar.

Mol	Chain	Length	Quality of chain
1	A	358	

## 2 Entry composition

There are 9 unique types of molecules in this entry. The entry contains 3631 atoms, of which 0 are hydrogens and 0 are deuteriums.

In the tables below, the ZeroOcc column contains the number of atoms modelled with zero occupancy, the AltConf column contains the number of residues with at least one atom in alternate conformation and the Trace column contains the number of residues modelled with at most 2 atoms.

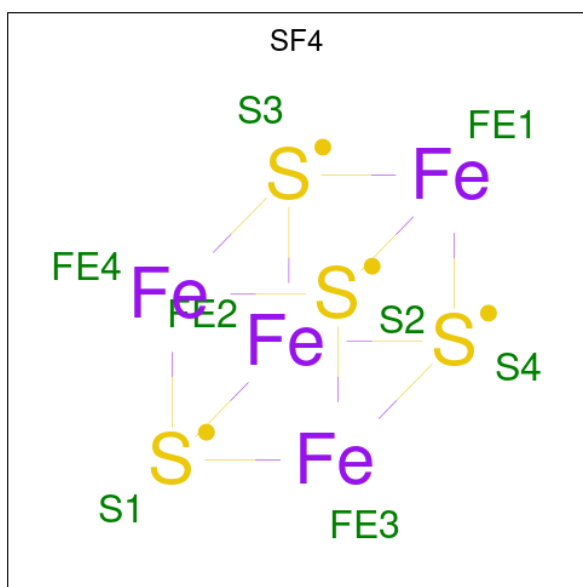
- Molecule 1 is a protein called [FeFe] hydrogenase maturase subunit HydE.

Mol	Chain	Residues	Atoms					ZeroOcc	AltConf	Trace
			Total	C	N	O	S			
1	A	346	2930	1872	502	537	19	0	33	0

There are 14 discrepancies between the modelled and reference sequences:

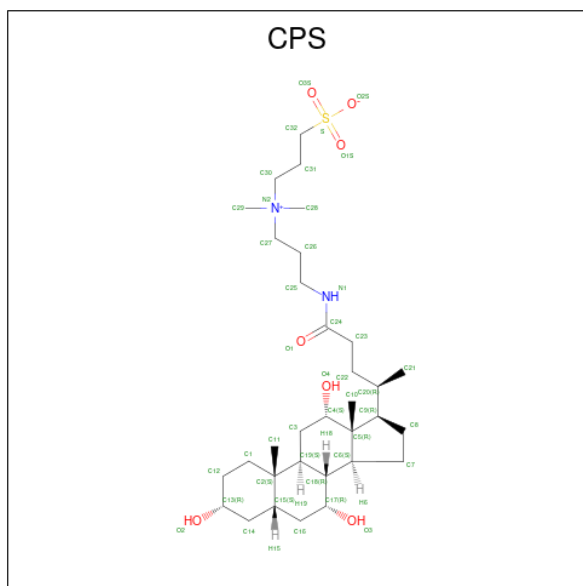
Chain	Residue	Modelled	Actual	Comment	Reference
A	-9	MET	-	initiating methionine	UNP Q9X0Z6
A	-8	TRP	-	expression tag	UNP Q9X0Z6
A	-7	SER	-	expression tag	UNP Q9X0Z6
A	-6	HIS	-	expression tag	UNP Q9X0Z6
A	-5	PRO	-	expression tag	UNP Q9X0Z6
A	-4	GLN	-	expression tag	UNP Q9X0Z6
A	-3	PHE	-	expression tag	UNP Q9X0Z6
A	-2	GLU	-	expression tag	UNP Q9X0Z6
A	-1	LYS	-	expression tag	UNP Q9X0Z6
A	0	ALA	-	expression tag	UNP Q9X0Z6
A	1	SER	-	expression tag	UNP Q9X0Z6
A	311	SER	CYS	engineered mutation	UNP Q9X0Z6
A	319	SER	CYS	engineered mutation	UNP Q9X0Z6
A	322	SER	CYS	engineered mutation	UNP Q9X0Z6

- Molecule 2 is IRON/SULFUR CLUSTER (three-letter code: SF4) (formula: Fe<sub>4</sub>S<sub>4</sub>).



Mol	Chain	Residues	Atoms				ZeroOcc	AltConf
2	A	1	Total	Fe	S			
			8	4	4	0	0	

- Molecule 3 is 3-[(3-CHOLAMIDOPROPYL)DIMETHYLAMMONIO]-1-PROPANESULFONATE (three-letter code: CPS) (formula:  $C_{32}H_{58}N_2O_7S$ ).



Mol	Chain	Residues	Atoms				ZeroOcc	AltConf	
3	A	1	Total	C	N	O	S		
			42	32	2	7	1	0	0
3	A	1	Total	C	N	O	S		
			42	32	2	7	1	0	1

*Continued on next page...*

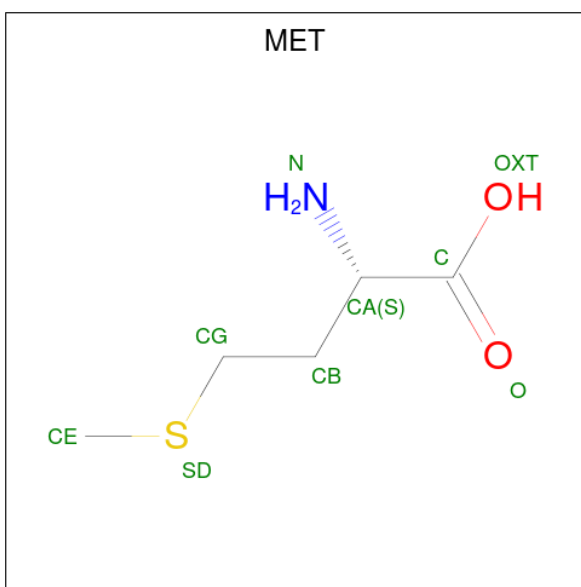
Continued from previous page...

Mol	Chain	Residues	Atoms	ZeroOcc	AltConf
3	A	1	Total C N O 29 24 1 4	0	0
3	A	1	Total C N O 29 24 1 4	0	0
3	A	1	Total C O 50 44 6	0	1

- Molecule 4 is CHLORIDE ION (three-letter code: CL) (formula: Cl).

Mol	Chain	Residues	Atoms	ZeroOcc	AltConf
4	A	2	Total Cl 2 2	0	0

- Molecule 5 is METHIONINE (three-letter code: MET) (formula: C<sub>5</sub>H<sub>11</sub>NO<sub>2</sub>S).



Mol	Chain	Residues	Atoms	ZeroOcc	AltConf
5	A	1	Total C N O S 9 5 1 2 1	0	1

- Molecule 6 is S-adenosyl-L-cysteine (three-letter code: 5X8) (formula: C<sub>13</sub>H<sub>18</sub>N<sub>6</sub>O<sub>5</sub>S).

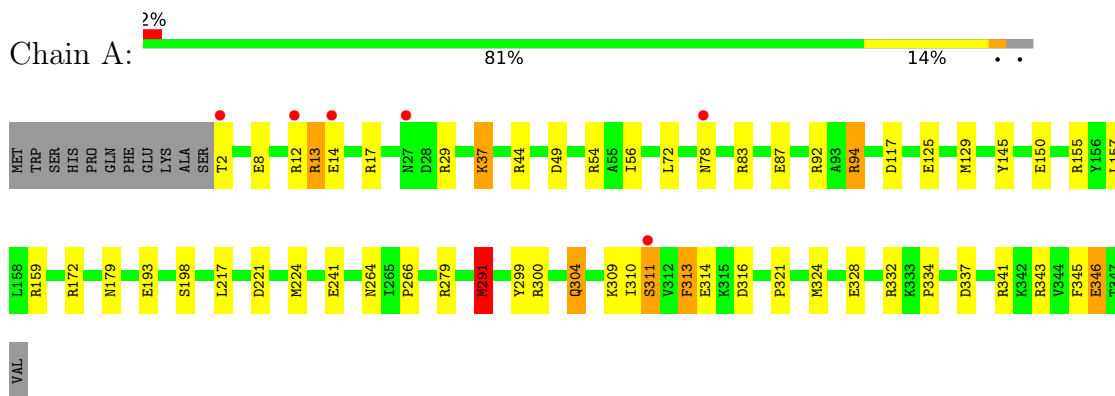




### 3 Residue-property plots [i](#)

These plots are drawn for all protein, RNA, DNA and oligosaccharide chains in the entry. The first graphic for a chain summarises the proportions of the various outlier classes displayed in the second graphic. The second graphic shows the sequence view annotated by issues in geometry and electron density. Residues are color-coded according to the number of geometric quality criteria for which they contain at least one outlier: green = 0, yellow = 1, orange = 2 and red = 3 or more. A red dot above a residue indicates a poor fit to the electron density ( $RSRZ > 2$ ). Stretches of 2 or more consecutive residues without any outlier are shown as a green connector. Residues present in the sample, but not in the model, are shown in grey.

- Molecule 1: [FeFe] hydrogenase maturase subunit HydE





## 4 Data and refinement statistics

Property	Value	Source
Space group	P 21 21 21	Depositor
Cell constants a, b, c, $\alpha$ , $\beta$ , $\gamma$	50.99Å 78.97Å 86.27Å 90.00° 90.00° 90.00°	Depositor
Resolution (Å)	43.90 – 1.17 43.90 – 1.17	Depositor EDS
% Data completeness (in resolution range)	99.7 (43.90-1.17) 99.7 (43.90-1.17)	Depositor EDS
$R_{merge}$	(Not available)	Depositor
$R_{sym}$	(Not available)	Depositor
$\langle I/\sigma(I) \rangle$ <sup>1</sup>	1.13 (at 1.17Å)	Xtrriage
Refinement program	REFMAC 5.8.0131	Depositor
R, $R_{free}$	0.110 , 0.132 0.111 , 0.135	Depositor DCC
$R_{free}$ test set	5529 reflections (4.67%)	wwPDB-VP
Wilson B-factor (Å <sup>2</sup> )	11.7	Xtrriage
Anisotropy	0.532	Xtrriage
Bulk solvent $k_{sol}$ (e/Å <sup>3</sup> ), $B_{sol}$ (Å <sup>2</sup> )	0.39 , 51.6	EDS
L-test for twinning <sup>2</sup>	$\langle  L  \rangle = 0.50$ , $\langle L^2 \rangle = 0.33$	Xtrriage
Estimated twinning fraction	No twinning to report.	Xtrriage
$F_o, F_c$ correlation	0.98	EDS
Total number of atoms	3631	wwPDB-VP
Average B, all atoms (Å <sup>2</sup> )	18.0	wwPDB-VP

Xtrriage's analysis on translational NCS is as follows: *The largest off-origin peak in the Patterson function is 5.06% of the height of the origin peak. No significant pseudotranslation is detected.*

<sup>1</sup>Intensities estimated from amplitudes.

<sup>2</sup>Theoretical values of  $\langle |L| \rangle$ ,  $\langle L^2 \rangle$  for acentric reflections are 0.5, 0.333 respectively for untwinned datasets, and 0.375, 0.2 for perfectly twinned datasets.

## 5 Model quality i

### 5.1 Standard geometry i

Bond lengths and bond angles in the following residue types are not validated in this section: CPS, 5X8, 41K, CL, SAH, SF4

The Z score for a bond length (or angle) is the number of standard deviations the observed value is removed from the expected value. A bond length (or angle) with  $|Z| > 5$  is considered an outlier worth inspection. RMSZ is the root-mean-square of all Z scores of the bond lengths (or angles).

Mol	Chain	Bond lengths		Bond angles	
		RMSZ	# Z  >5	RMSZ	# Z  >5
1	A	1.82	14/3048 (0.5%)	1.33	36/4117 (0.9%)

All (14) bond length outliers are listed below:

Mol	Chain	Res	Type	Atoms	Z	Observed(Å)	Ideal(Å)
1	A	304[A]	GLN	CB-CG	50.52	2.88	1.52
1	A	304[B]	GLN	CB-CG	50.52	2.88	1.52
1	A	92	ARG	CZ-NH2	-8.01	1.22	1.33
1	A	346	GLU	CD-OE1	-7.18	1.17	1.25
1	A	13	ARG	CZ-NH2	6.79	1.41	1.33
1	A	328	GLU	CD-OE1	-6.63	1.18	1.25
1	A	341	ARG	CG-CD	-6.05	1.36	1.51
1	A	346	GLU	CD-OE2	-6.05	1.19	1.25
1	A	125	GLU	CD-OE1	-5.95	1.19	1.25
1	A	78[A]	ASN	C-O	5.93	1.34	1.23
1	A	78[B]	ASN	C-O	5.93	1.34	1.23
1	A	300	ARG	CZ-NH2	-5.85	1.25	1.33
1	A	241	GLU	CD-OE2	-5.50	1.19	1.25
1	A	17	ARG	CZ-NH1	5.16	1.39	1.33

All (36) bond angle outliers are listed below:

Mol	Chain	Res	Type	Atoms	Z	Observed(°)	Ideal(°)
1	A	304[A]	GLN	CA-CB-CG	-19.09	71.39	113.40
1	A	304[B]	GLN	CA-CB-CG	-19.09	71.39	113.40
1	A	13	ARG	NE-CZ-NH1	-10.29	115.15	120.30
1	A	300	ARG	NE-CZ-NH2	-10.14	115.23	120.30
1	A	29	ARG	NE-CZ-NH1	10.06	125.33	120.30
1	A	337	ASP	CB-CG-OD1	9.02	126.42	118.30
1	A	29	ARG	NE-CZ-NH2	-8.48	116.06	120.30

*Continued on next page...*

Continued from previous page...

Mol	Chain	Res	Type	Atoms	Z	Observed(°)	Ideal(°)
1	A	316	ASP	CB-CG-OD2	-8.40	110.74	118.30
1	A	155	ARG	NE-CZ-NH1	7.97	124.29	120.30
1	A	241	GLU	OE1-CD-OE2	-7.65	114.12	123.30
1	A	117	ASP	CB-CG-OD1	7.63	125.17	118.30
1	A	279	ARG	NE-CZ-NH2	-7.26	116.67	120.30
1	A	54	ARG	NE-CZ-NH2	-6.93	116.84	120.30
1	A	117	ASP	CB-CG-OD2	-6.64	112.32	118.30
1	A	49	ASP	CB-CG-OD1	6.63	124.27	118.30
1	A	44	ARG	NE-CZ-NH2	-6.56	117.02	120.30
1	A	332	ARG	NE-CZ-NH2	-6.46	117.07	120.30
1	A	345	PHE	CB-CG-CD2	-6.41	116.32	120.80
1	A	83	ARG	NE-CZ-NH1	6.36	123.48	120.30
1	A	299	TYR	CB-CG-CD1	-6.21	117.27	121.00
1	A	72	LEU	CB-CG-CD2	6.17	121.50	111.00
1	A	291[A]	MET	CG-SD-CE	5.82	109.51	100.20
1	A	291[B]	MET	CG-SD-CE	5.82	109.51	100.20
1	A	94	ARG	NE-CZ-NH2	5.81	123.21	120.30
1	A	343	ARG	NE-CZ-NH2	-5.68	117.46	120.30
1	A	313	PHE	CB-CG-CD1	5.65	124.75	120.80
1	A	221	ASP	CB-CG-OD2	-5.59	113.27	118.30
1	A	44	ARG	NE-CZ-NH1	5.57	123.09	120.30
1	A	92	ARG	NE-CZ-NH2	-5.56	117.52	120.30
1	A	279	ARG	NE-CZ-NH1	5.44	123.02	120.30
1	A	299	TYR	CG-CD2-CE2	-5.43	116.95	121.30
1	A	145	TYR	CB-CG-CD1	5.27	124.16	121.00
1	A	172	ARG	NE-CZ-NH1	5.17	122.88	120.30
1	A	155	ARG	NE-CZ-NH2	-5.13	117.73	120.30
1	A	193[A]	GLU	OE1-CD-OE2	-5.02	117.28	123.30
1	A	193[B]	GLU	OE1-CD-OE2	-5.02	117.28	123.30

There are no chirality outliers.

There are no planarity outliers.

## 5.2 Too-close contacts

In the following table, the Non-H and H(model) columns list the number of non-hydrogen atoms and hydrogen atoms in the chain respectively. The H(added) column lists the number of hydrogen atoms added and optimized by MolProbity. The Clashes column lists the number of clashes within the asymmetric unit, whereas Symm-Clashes lists symmetry-related clashes.

Mol	Chain	Non-H	H(model)	H(added)	Clashes	Symm-Clashes
1	A	2930	0	2950	41	1
2	A	8	0	0	0	0
3	A	192	0	225	16	0
4	A	2	0	0	0	0
5	A	9	0	8	0	0
6	A	25	0	0	0	0
7	A	26	0	19	0	0
8	A	12	0	7	1	0
9	A	427	0	0	19	2
All	All	3631	0	3209	47	2

The all-atom clashscore is defined as the number of clashes found per 1000 atoms (including hydrogen atoms). The all-atom clashscore for this structure is 7.

All (47) close contacts within the same asymmetric unit are listed below, sorted by their clash magnitude.

Atom-1	Atom-2	Interatomic distance (Å)	Clash overlap (Å)
1:A:324[B]:MET:CE	3:A:406[B]:CPS:C11	2.34	1.04
1:A:324[B]:MET:HE2	3:A:406[B]:CPS:H11B	1.42	1.02
1:A:324[B]:MET:CE	3:A:406[B]:CPS:H11B	1.98	0.92
1:A:324[B]:MET:HE2	3:A:406[B]:CPS:C11	1.97	0.91
1:A:324[B]:MET:HE3	3:A:406[B]:CPS:C11	2.01	0.91
1:A:150:GLU:OE1	9:A:501:HOH:O	1.96	0.82
1:A:321:PRO:HB3	3:A:406[A]:CPS:H11A	1.66	0.77
1:A:334:PRO:HA	9:A:607[B]:HOH:O	1.88	0.73
1:A:309:LYS:CD	9:A:634:HOH:O	2.35	0.73
1:A:314:GLU:O	9:A:502[B]:HOH:O	2.07	0.71
1:A:157:LEU:HD23	1:A:224[A]:MET:HE2	1.72	0.71
1:A:314:GLU:OE2	9:A:503:HOH:O	2.08	0.71
1:A:87[B]:GLU:HG3	9:A:741:HOH:O	1.91	0.70
1:A:334:PRO:CA	9:A:607[B]:HOH:O	2.39	0.70
1:A:334:PRO:CB	9:A:607[B]:HOH:O	2.40	0.70
1:A:324[B]:MET:CE	3:A:406[B]:CPS:H11	2.24	0.64
1:A:157:LEU:CD2	1:A:224[A]:MET:HE2	2.29	0.62
1:A:217:LEU:HD11	9:A:504:HOH:O	1.97	0.62
1:A:159:ARG:NH2	8:A:412[B]:41K:OAA	2.28	0.62
1:A:12:ARG:NH2	9:A:506:HOH:O	2.32	0.61
1:A:291[B]:MET:CE	9:A:898:HOH:O	2.49	0.59
1:A:324[B]:MET:HE3	3:A:406[B]:CPS:H11A	1.84	0.56
1:A:291[B]:MET:HE1	9:A:898:HOH:O	2.03	0.56
1:A:266[B]:PRO:HG3	9:A:898:HOH:O	2.06	0.55
1:A:94:ARG:HG3	1:A:129[B]:MET:SD	2.49	0.53

*Continued on next page...*

Continued from previous page...

Atom-1	Atom-2	Interatomic distance (Å)	Clash overlap (Å)
3:A:406[B]:CPS:H16A	9:A:703:HOH:O	2.08	0.53
1:A:14:GLU:HG2	1:A:14:GLU:O	2.08	0.52
1:A:56[A]:ILE:HD12	1:A:291[A]:MET:HE1	1.90	0.52
3:A:406[A]:CPS:H4	3:A:406[A]:CPS:H21A	1.91	0.52
1:A:13:ARG:NH1	1:A:346:GLU:OE1	2.44	0.51
1:A:8:GLU:O	1:A:12:ARG:HG3	2.11	0.50
1:A:324[B]:MET:HE3	3:A:406[B]:CPS:H11	1.84	0.48
1:A:157:LEU:HD23	1:A:224[A]:MET:CE	2.41	0.48
1:A:37[A]:LYS:HE3	9:A:591:HOH:O	2.13	0.47
3:A:405:CPS:H21A	3:A:405:CPS:H4	1.97	0.47
1:A:324[B]:MET:HE2	3:A:406[B]:CPS:H11	1.88	0.47
1:A:157:LEU:CD2	1:A:224[A]:MET:CE	2.93	0.45
3:A:406[B]:CPS:H21A	3:A:406[B]:CPS:H4	1.99	0.44
1:A:56[A]:ILE:HD12	1:A:291[A]:MET:CE	2.47	0.44
1:A:198:SER:OG	9:A:504:HOH:O	2.21	0.43
1:A:179[A]:ASN:CG	9:A:505:HOH:O	2.57	0.43
1:A:304[A]:GLN:HB3	9:A:728:HOH:O	2.19	0.43
1:A:291[B]:MET:HE3	9:A:898:HOH:O	2.15	0.42
1:A:224[B]:MET:HA	1:A:264:ASN:O	2.19	0.41
3:A:403[A]:CPS:H31A	3:A:403[A]:CPS:H272	1.85	0.41
3:A:404:CPS:H21A	3:A:404:CPS:H4	2.02	0.40
1:A:310:ILE:O	1:A:311:SER:CB	2.70	0.40

All (2) symmetry-related close contacts are listed below. The label for Atom-2 includes the symmetry operator and encoded unit-cell translations to be applied.

Atom-1	Atom-2	Interatomic distance (Å)	Clash overlap (Å)
9:A:738:HOH:O	9:A:865:HOH:O[2_655]	1.94	0.26
1:A:313:PHE:O	9:A:737:HOH:O[3_755]	1.97	0.23

## 5.3 Torsion angles [i](#)

### 5.3.1 Protein backbone [i](#)

In the following table, the Percentiles column shows the percent Ramachandran outliers of the chain as a percentile score with respect to all X-ray entries followed by that with respect to entries of similar resolution.

The Analysed column shows the number of residues for which the backbone conformation was analysed, and the total number of residues.

Mol	Chain	Analysed	Favoured	Allowed	Outliers	Percentiles	
1	A	374/358 (104%)	363 (97%)	11 (3%)	0	100	100

There are no Ramachandran outliers to report.

### 5.3.2 Protein sidechains [i](#)

In the following table, the Percentiles column shows the percent sidechain outliers of the chain as a percentile score with respect to all X-ray entries followed by that with respect to entries of similar resolution.

The Analysed column shows the number of residues for which the sidechain conformation was analysed, and the total number of residues.

Mol	Chain	Analysed	Rotameric	Outliers	Percentiles	
1	A	320/313 (102%)	314 (98%)	6 (2%)	57	18

All (6) residues with a non-rotameric sidechain are listed below:

Mol	Chain	Res	Type
1	A	2	THR
1	A	37[A]	LYS
1	A	37[B]	LYS
1	A	291[A]	MET
1	A	291[B]	MET
1	A	311	SER

Sometimes sidechains can be flipped to improve hydrogen bonding and reduce clashes. There are no such sidechains identified.

### 5.3.3 RNA [i](#)

There are no RNA molecules in this entry.

## 5.4 Non-standard residues in protein, DNA, RNA chains [i](#)

There are no non-standard protein/DNA/RNA residues in this entry.

### 5.5 Carbohydrates [i](#)

There are no monosaccharides in this entry.

## 5.6 Ligand geometry

Of 13 ligands modelled in this entry, 2 are monoatomic - leaving 11 for Mogul analysis.

In the following table, the Counts columns list the number of bonds (or angles) for which Mogul statistics could be retrieved, the number of bonds (or angles) that are observed in the model and the number of bonds (or angles) that are defined in the Chemical Component Dictionary. The Link column lists molecule types, if any, to which the group is linked. The Z score for a bond length (or angle) is the number of standard deviations the observed value is removed from the expected value. A bond length (or angle) with  $|Z| > 2$  is considered an outlier worth inspection. RMSZ is the root-mean-square of all Z scores of the bond lengths (or angles).

Mol	Type	Chain	Res	Link	Bond lengths			Bond angles		
					Counts	RMSZ	# Z  > 2	Counts	RMSZ	# Z  > 2
8	41K	A	412[B]	4	9,12,12	1.69	3 (33%)	8,18,18	0.86	0
3	CPS	A	406[B]	-	28,28,45	1.27	3 (10%)	46,46,70	1.45	8 (17%)
3	CPS	A	402	-	45,45,45	2.03	7 (15%)	69,70,70	1.14	7 (10%)
5	MET	A	409[A]	2	7,8,8	1.77	1 (14%)	7,9,9	1.09	0
2	SF4	A	401	7,5,1	0,12,12	-	-	-	-	-
7	SAH	A	411[B]	2	24,28,28	1.28	3 (12%)	25,40,40	1.70	7 (28%)
3	CPS	A	406[A]	-	28,28,45	1.87	9 (32%)	46,46,70	2.28	19 (41%)
6	5X8	A	410[A]	-	23,27,27	1.42	4 (17%)	24,39,39	1.36	3 (12%)
3	CPS	A	404	-	32,32,45	1.13	1 (3%)	51,51,70	0.98	1 (1%)
3	CPS	A	405	-	32,32,45	1.36	3 (9%)	51,51,70	1.51	7 (13%)

In the following table, the Chirals column lists the number of chiral outliers, the number of chiral centers analysed, the number of these observed in the model and the number defined in the Chemical Component Dictionary. Similar counts are reported in the Torsion and Rings columns. '-' means no outliers of that kind were identified.

Mol	Type	Chain	Res	Link	Chirals	Torsions	Rings
8	41K	A	412[B]	4	-	2/6/21/21	0/1/1/1
3	CPS	A	406[B]	-	-	0/4/69/90	0/4/4/4
3	CPS	A	402	-	-	0/25/90/90	0/4/4/4
5	MET	A	409[A]	2	-	1/8/8/8	-
2	SF4	A	401	7,5,1	-	-	0/6/5/5
7	SAH	A	411[B]	2	-	3/11/31/31	0/3/3/3
3	CPS	A	406[A]	-	-	0/4/69/90	0/4/4/4
6	5X8	A	410[A]	-	-	0/10/30/30	0/3/3/3
3	CPS	A	404	-	-	0/9/74/90	0/4/4/4
3	CPS	A	405	-	-	0/9/74/90	0/4/4/4

All (34) bond length outliers are listed below:

Mol	Chain	Res	Type	Atoms	Z	Observed(Å)	Ideal(Å)
3	A	402	CPS	C32-S	-10.50	1.62	1.77
3	A	406[A]	CPS	C18-C17	-4.62	1.45	1.53
5	A	409[A]	MET	CB-CA	3.88	1.61	1.53
3	A	406[A]	CPS	C3-C4	-3.72	1.47	1.53
3	A	406[B]	CPS	C5-C6	-3.47	1.49	1.55
6	A	410[A]	5X8	C2'-C1'	3.36	1.58	1.53
7	A	411[B]	SAH	CG-SD	-3.32	1.69	1.81
3	A	405	CPS	C3-C4	3.27	1.58	1.53
3	A	404	CPS	O4-C4	3.19	1.48	1.43
6	A	410[A]	5X8	C4-N3	-3.18	1.31	1.35
3	A	402	CPS	C1-C2	3.18	1.59	1.54
3	A	402	CPS	C14-C15	-3.09	1.48	1.53
3	A	402	CPS	C29-N2	2.86	1.57	1.50
8	A	412[B]	41K	CB-SAK	-2.77	1.77	1.80
7	A	411[B]	SAH	C5-C4	2.70	1.48	1.40
6	A	410[A]	5X8	O4'-C4'	2.67	1.51	1.45
8	A	412[B]	41K	CAF-N	2.67	1.48	1.45
3	A	405	CPS	C23-C24	2.62	1.61	1.51
3	A	406[A]	CPS	O3-C17	2.58	1.48	1.43
3	A	406[A]	CPS	C11-C2	2.53	1.58	1.54
3	A	406[B]	CPS	C16-C17	-2.42	1.48	1.52
7	A	411[B]	SAH	O4'-C4'	-2.42	1.39	1.45
3	A	406[A]	CPS	C14-C13	2.41	1.56	1.51
3	A	402	CPS	C20-C9	-2.39	1.50	1.54
3	A	406[A]	CPS	C2-C19	-2.35	1.51	1.56
6	A	410[A]	5X8	O3'-C3'	2.25	1.48	1.43
3	A	406[A]	CPS	C18-C19	2.22	1.58	1.53
3	A	402	CPS	C12-C13	-2.20	1.46	1.51
3	A	402	CPS	C31-C32	2.18	1.59	1.52
8	A	412[B]	41K	OAD-CAE	2.15	1.29	1.22
3	A	406[B]	CPS	C7-C6	-2.13	1.50	1.54
3	A	405	CPS	O4-C4	2.07	1.47	1.43
3	A	406[A]	CPS	C9-C20	-2.00	1.50	1.54
3	A	406[A]	CPS	C12-C13	2.00	1.56	1.51

All (52) bond angle outliers are listed below:

Mol	Chain	Res	Type	Atoms	Z	Observed(°)	Ideal(°)
3	A	406[A]	CPS	C22-C20-C9	-5.43	97.89	112.42
3	A	405	CPS	C3-C19-C2	-5.42	108.13	113.73
3	A	406[A]	CPS	C8-C9-C5	-4.14	99.50	103.55
3	A	406[A]	CPS	C3-C19-C2	-3.92	109.68	113.73
3	A	406[A]	CPS	C11-C2-C1	-3.92	101.95	108.26

*Continued on next page...*



*Continued from previous page...*

Mol	Chain	Res	Type	Atoms	Z	Observed(°)	Ideal(°)
3	A	406[A]	CPS	C6-C5-C4	3.89	111.02	107.40
3	A	406[A]	CPS	C9-C5-C4	-3.87	114.13	117.67
7	A	411[B]	SAH	C4'-C5'-SD	3.86	127.64	113.78
7	A	411[B]	SAH	C5'-C4'-C3'	3.56	123.95	115.06
3	A	406[B]	CPS	C12-C1-C2	3.50	118.78	112.78
3	A	406[A]	CPS	C14-C13-C12	-3.49	106.38	110.55
3	A	406[A]	CPS	C3-C19-C18	3.39	115.83	110.88
3	A	406[B]	CPS	C14-C15-C2	3.33	116.19	112.66
6	A	410[A]	5X8	C1'-N9-C4	-3.32	120.80	126.64
3	A	405	CPS	C6-C5-C4	3.26	110.44	107.40
6	A	410[A]	5X8	O4'-C4'-C3'	-2.97	99.23	105.11
3	A	402	CPS	C29-N2-C30	2.92	116.89	109.46
3	A	406[A]	CPS	C11-C2-C19	2.91	115.19	111.18
3	A	406[B]	CPS	C10-C5-C9	-2.90	106.68	111.21
3	A	406[A]	CPS	C7-C8-C9	2.79	110.67	105.13
3	A	406[A]	CPS	C19-C18-C17	2.77	115.19	111.88
3	A	405	CPS	C23-C22-C20	2.76	119.55	114.52
3	A	406[A]	CPS	C1-C12-C13	-2.75	106.94	110.47
3	A	402	CPS	C29-N2-C27	-2.73	102.51	109.46
3	A	406[A]	CPS	C5-C6-C18	-2.67	111.33	114.74
3	A	402	CPS	O1S-S-C32	-2.54	103.85	106.92
3	A	406[B]	CPS	C11-C2-C19	2.54	114.68	111.18
7	A	411[B]	SAH	O3'-C3'-C4'	-2.48	103.88	111.05
3	A	405	CPS	C19-C3-C4	-2.44	111.08	114.30
7	A	411[B]	SAH	C2'-C3'-C4'	2.43	107.36	102.64
3	A	402	CPS	O3S-S-C32	-2.41	104.01	106.92
7	A	411[B]	SAH	C1'-N9-C4	2.39	130.85	126.64
3	A	402	CPS	C23-C24-N1	-2.35	112.46	116.42
3	A	405	CPS	C5-C6-C18	-2.33	111.76	114.74
3	A	406[A]	CPS	C8-C7-C6	-2.33	100.51	105.13
3	A	405	CPS	C23-C24-N1	-2.27	109.46	116.51
7	A	411[B]	SAH	O4'-C4'-C3'	-2.24	100.67	105.11
7	A	411[B]	SAH	OXT-C-CA	2.24	121.02	113.38
3	A	406[B]	CPS	C14-C13-C12	-2.24	107.88	110.55
3	A	406[A]	CPS	C21-C20-C9	2.21	118.33	112.42
3	A	406[A]	CPS	C14-C15-C2	-2.20	110.32	112.66
3	A	406[A]	CPS	C1-C2-C19	2.17	114.77	111.35
3	A	406[A]	CPS	C10-C5-C4	-2.15	106.87	109.07
3	A	402	CPS	C26-C25-N1	-2.15	106.06	112.21
3	A	406[B]	CPS	C10-C5-C6	2.13	114.54	111.21
3	A	406[B]	CPS	C3-C19-C18	2.12	113.98	110.88
3	A	404	CPS	C23-C22-C20	-2.11	110.67	114.52

*Continued on next page...*

*Continued from previous page...*

Mol	Chain	Res	Type	Atoms	Z	Observed(°)	Ideal(°)
3	A	402	CPS	C31-C32-S	2.10	116.47	113.25
3	A	406[B]	CPS	C7-C6-C5	2.09	105.61	103.55
3	A	406[A]	CPS	C16-C15-C2	2.07	114.86	112.66
6	A	410[A]	5X8	O2'-C2'-C1'	-2.07	103.21	110.85
3	A	405	CPS	C10-C5-C6	2.01	114.35	111.21

There are no chirality outliers.

All (6) torsion outliers are listed below:

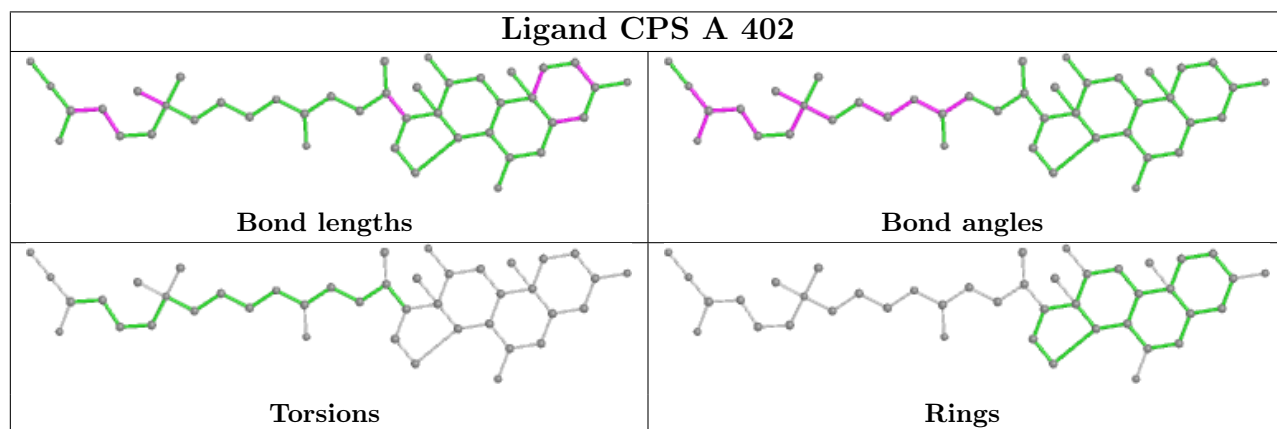
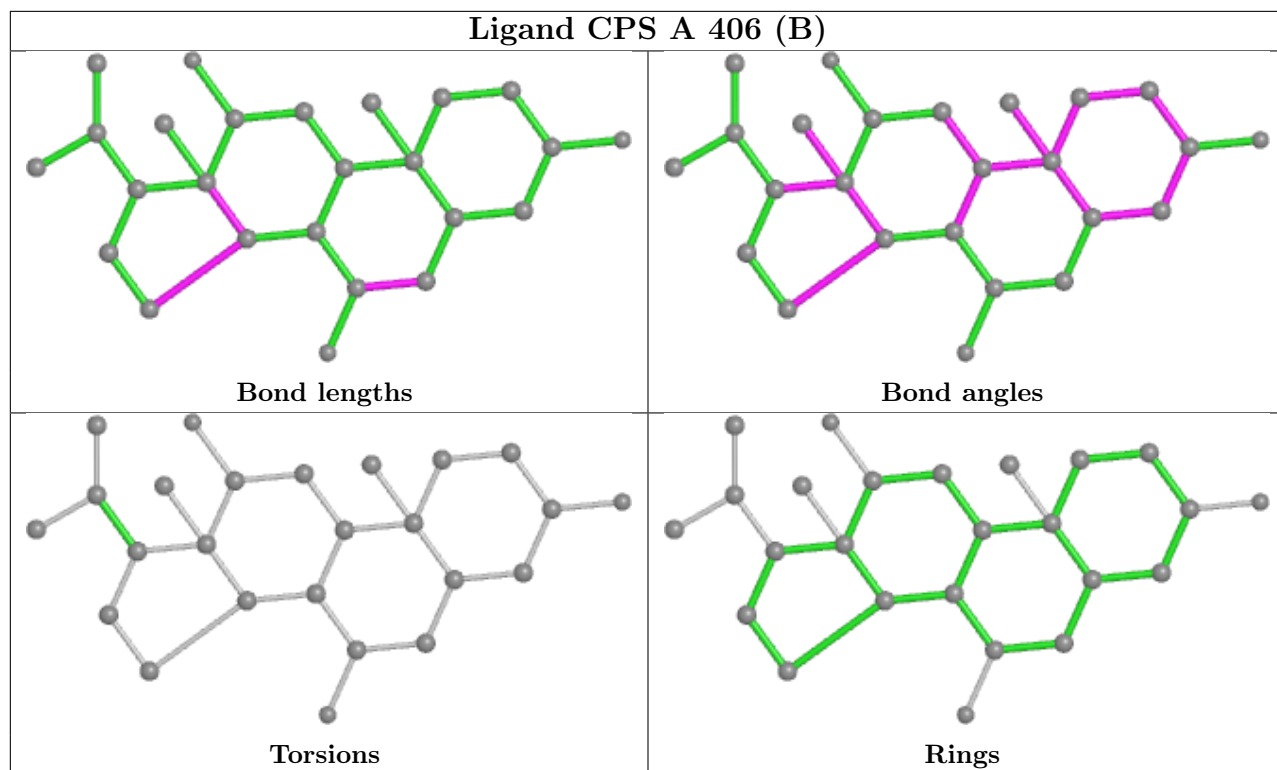
Mol	Chain	Res	Type	Atoms
7	A	411[B]	SAH	N-CA-CB-CG
7	A	411[B]	SAH	C-CA-CB-CG
8	A	412[B]	41K	OAD-CAE-CAF-CAB
8	A	412[B]	41K	OAD-CAE-CAF-N
5	A	409[A]	MET	C-CA-CB-CG
7	A	411[B]	SAH	OXT-C-CA-N

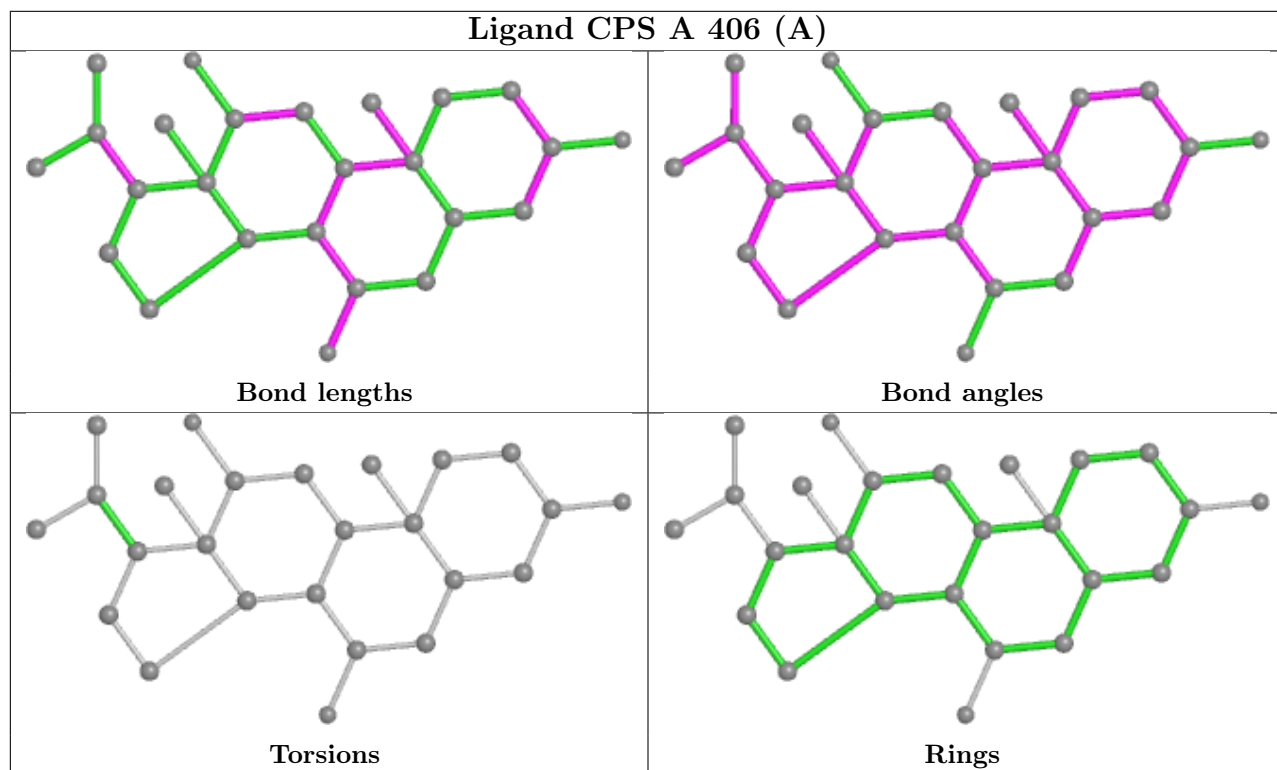
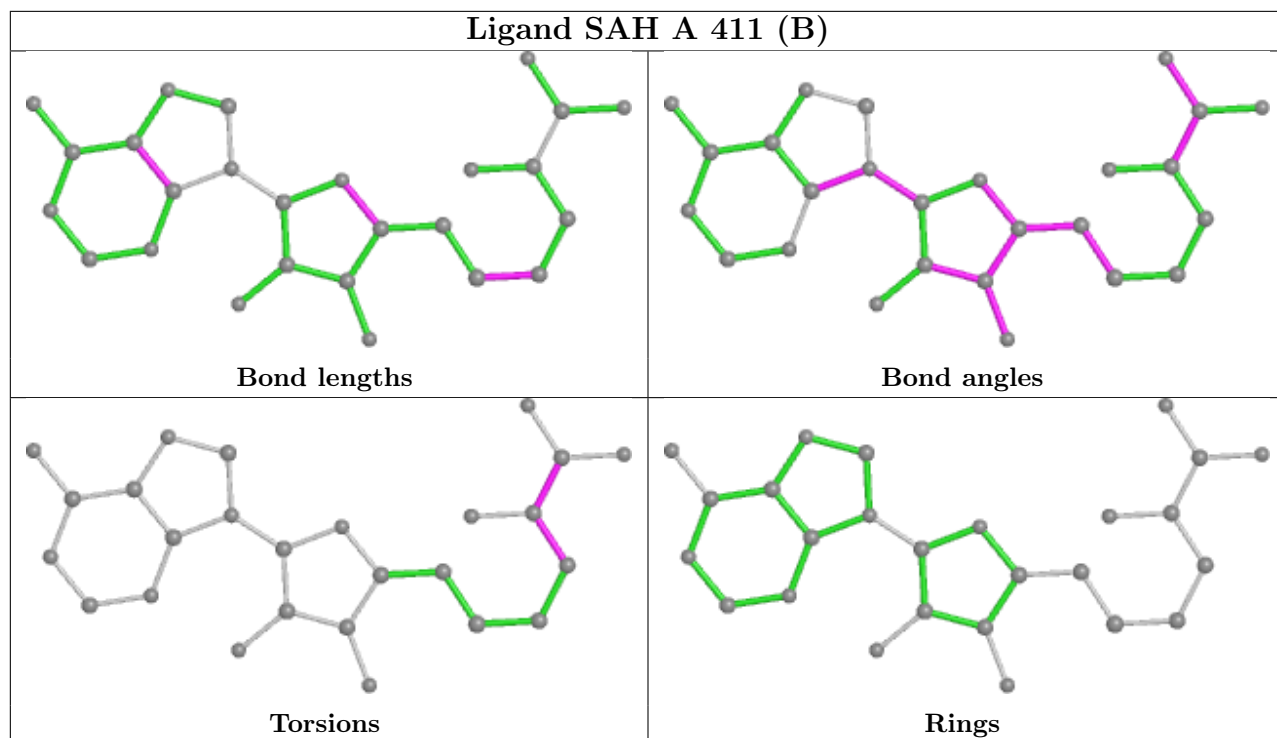
There are no ring outliers.

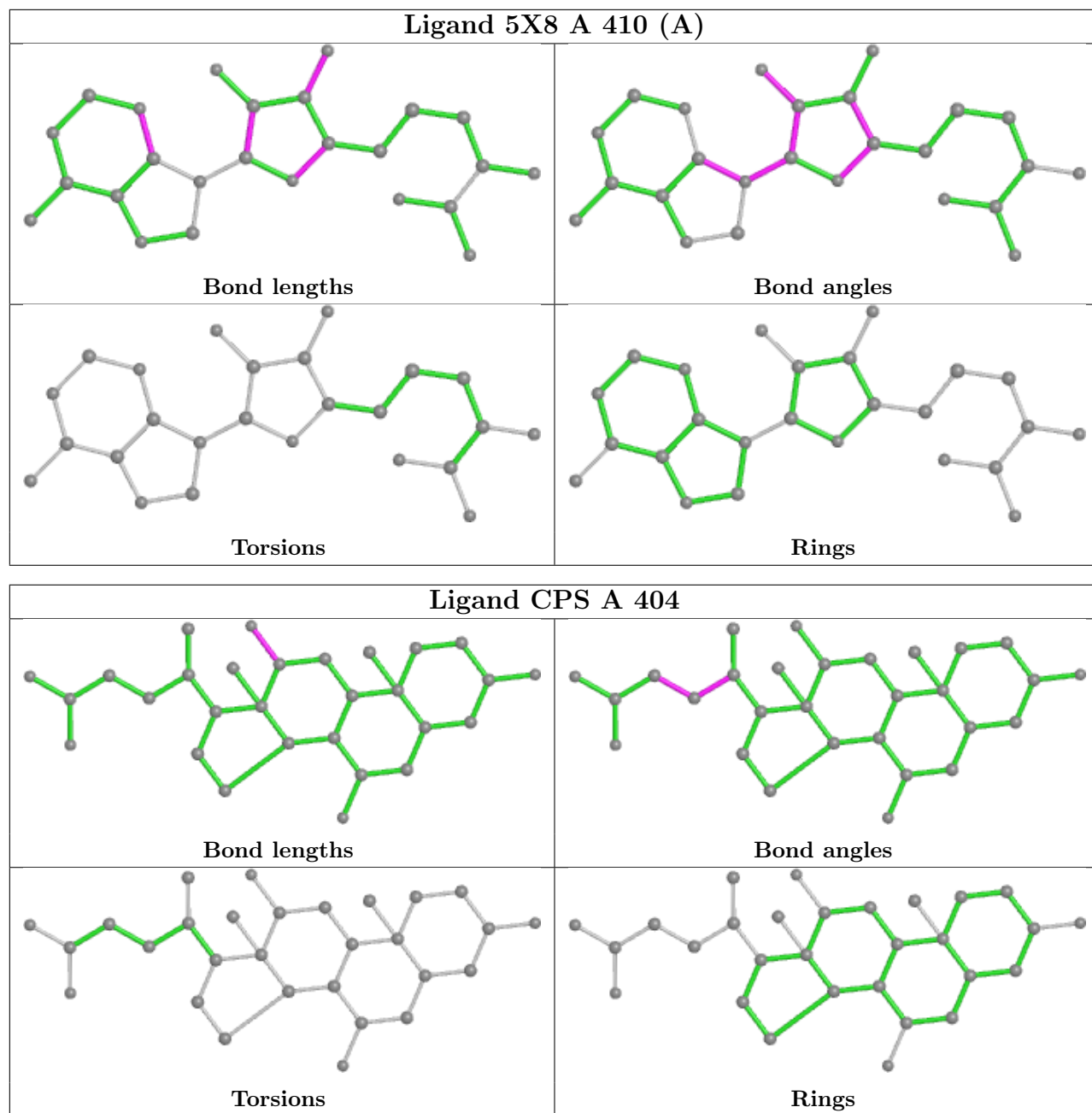
5 monomers are involved in 16 short contacts:

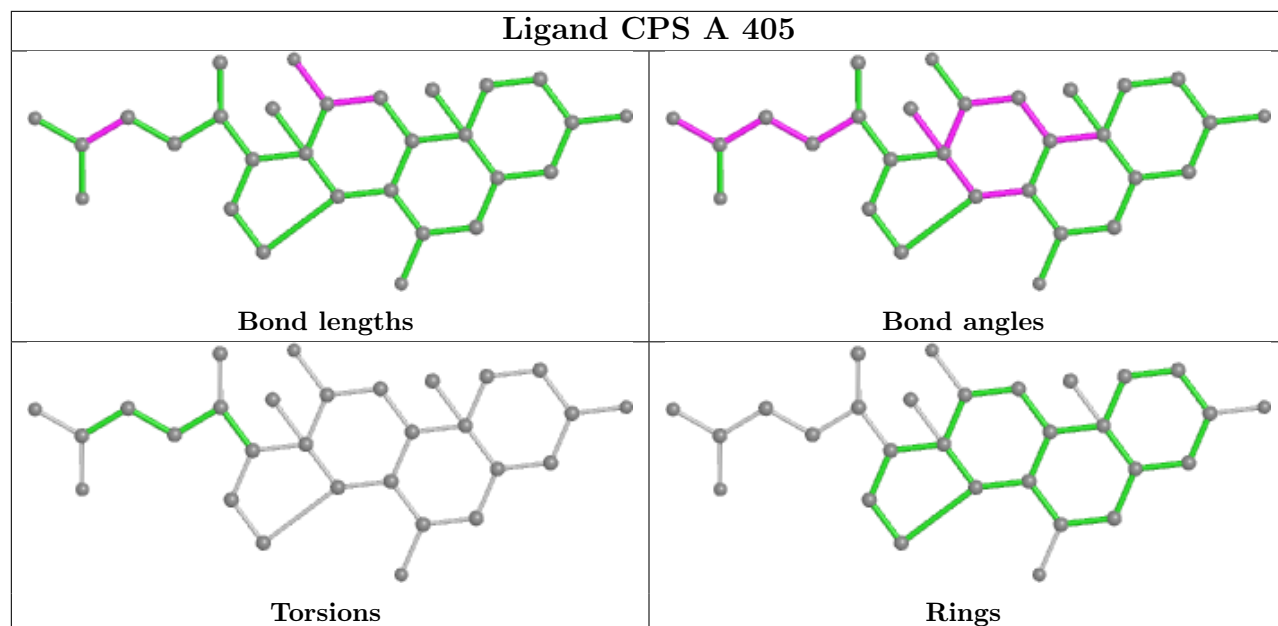
Mol	Chain	Res	Type	Clashes	Symm-Clashes
8	A	412[B]	41K	1	0
3	A	406[B]	CPS	11	0
3	A	406[A]	CPS	2	0
3	A	404	CPS	1	0
3	A	405	CPS	1	0

The following is a two-dimensional graphical depiction of Mogul quality analysis of bond lengths, bond angles, torsion angles, and ring geometry for all instances of the Ligand of Interest. In addition, ligands with molecular weight > 250 and outliers as shown on the validation Tables will also be included. For torsion angles, if less than 5% of the Mogul distribution of torsion angles is within 10 degrees of the torsion angle in question, then that torsion angle is considered an outlier. Any bond that is central to one or more torsion angles identified as an outlier by Mogul will be highlighted in the graph. For rings, the root-mean-square deviation (RMSD) between the ring in question and similar rings identified by Mogul is calculated over all ring torsion angles. If the average RMSD is greater than 60 degrees and the minimal RMSD between the ring in question and any Mogul-identified rings is also greater than 60 degrees, then that ring is considered an outlier. The outliers are highlighted in purple. The color gray indicates Mogul did not find sufficient equivalents in the CSD to analyse the geometry.









## 5.7 Other polymers [i](#)

There are no such residues in this entry.

## 5.8 Polymer linkage issues [i](#)

There are no chain breaks in this entry.

## 6 Fit of model and data [i](#)

### 6.1 Protein, DNA and RNA chains [i](#)

In the following table, the column labelled ‘#RSRZ> 2’ contains the number (and percentage) of RSRZ outliers, followed by percent RSRZ outliers for the chain as percentile scores relative to all X-ray entries and entries of similar resolution. The OWAB column contains the minimum, median, 95<sup>th</sup> percentile and maximum values of the occupancy-weighted average B-factor per residue. The column labelled ‘Q< 0.9’ lists the number of (and percentage) of residues with an average occupancy less than 0.9.

Mol	Chain	Analysed	<RSRZ>	#RSRZ>2	OWAB(Å <sup>2</sup> )	Q<0.9
1	A	346/358 (96%)	-0.15	6 (1%) 70 70	9, 14, 28, 46	12 (3%)

All (6) RSRZ outliers are listed below:

Mol	Chain	Res	Type	RSRZ
1	A	311	SER	3.7
1	A	78[A]	ASN	3.4
1	A	2	THR	2.5
1	A	27[A]	ASN	2.3
1	A	14	GLU	2.2
1	A	12	ARG	2.1

### 6.2 Non-standard residues in protein, DNA, RNA chains [i](#)

There are no non-standard protein/DNA/RNA residues in this entry.

### 6.3 Carbohydrates [i](#)

There are no monosaccharides in this entry.

### 6.4 Ligands [i](#)

In the following table, the Atoms column lists the number of modelled atoms in the group and the number defined in the chemical component dictionary. The B-factors column lists the minimum, median, 95<sup>th</sup> percentile and maximum values of B factors of atoms in the group. The column labelled ‘Q< 0.9’ lists the number of atoms with occupancy less than 0.9.

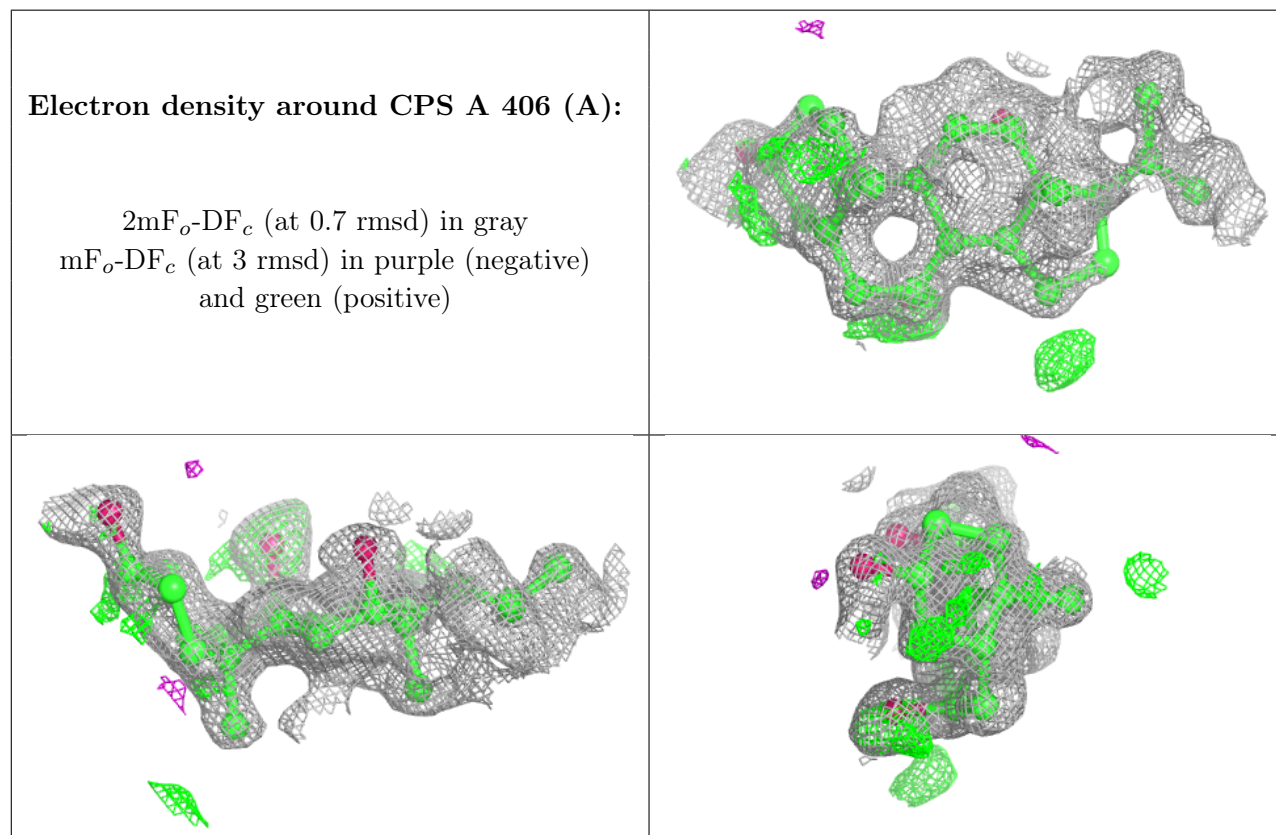
Mol	Type	Chain	Res	Atoms	RSCC	RSR	B-factors(Å <sup>2</sup> )	Q<0.9
3	CPS	A	406[A]	25/42	0.88	0.15	9,11,14,16	25

*Continued on next page...*

Continued from previous page...

Mol	Type	Chain	Res	Atoms	RSCC	RSR	B-factors( $\text{\AA}^2$ )	Q<0.9
3	CPS	A	406[B]	25/42	0.88	0.15	18,21,30,37	25
3	CPS	A	405	29/42	0.93	0.10	14,17,24,46	0
3	CPS	A	403[A]	42/42	0.95	0.08	12,16,25,37	13
3	CPS	A	404	29/42	0.96	0.07	12,14,39,43	0
3	CPS	A	402	42/42	0.97	0.07	9,13,24,31	5
4	CL	A	408	1/1	0.97	0.07	27,27,27,27	1
5	MET	A	409[A]	9/9	0.97	0.11	12,14,19,20	9
6	5X8	A	410[A]	25/25	0.97	0.07	13,15,20,22	25
7	SAH	A	411[B]	26/26	0.97	0.08	5,11,14,15	26
8	41K	A	412[B]	12/12	0.98	0.09	11,16,19,22	12
4	CL	A	407	1/1	0.99	0.03	16,16,16,16	0
2	SF4	A	401	8/8	1.00	0.04	11,11,12,12	0

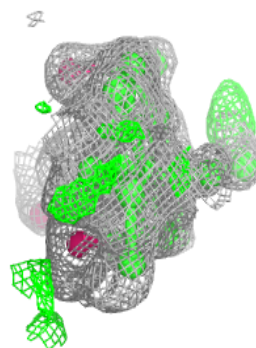
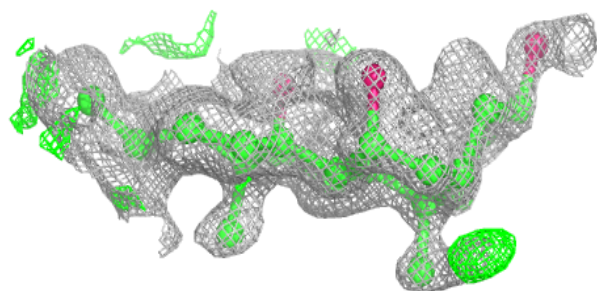
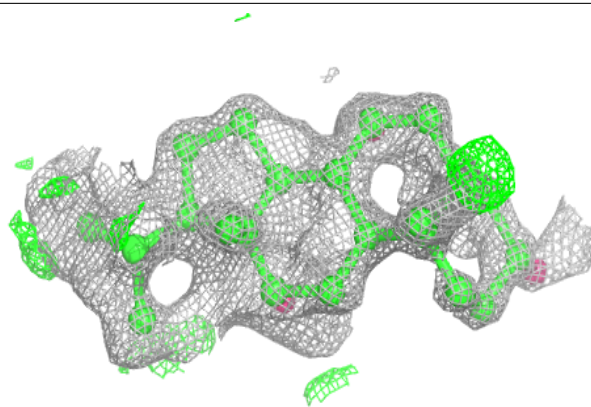
The following is a graphical depiction of the model fit to experimental electron density of all instances of the Ligand of Interest. In addition, ligands with molecular weight > 250 and outliers as shown on the geometry validation Tables will also be included. Each fit is shown from different orientation to approximate a three-dimensional view.



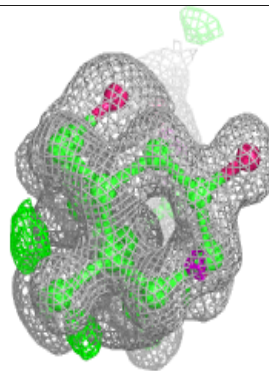
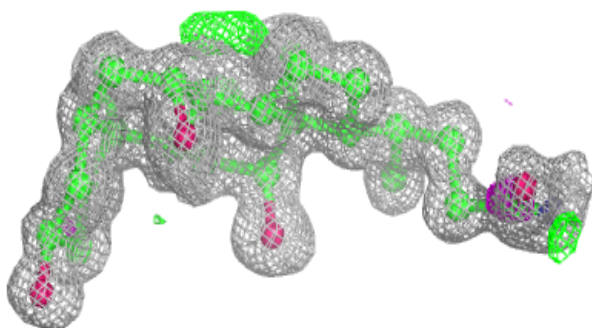
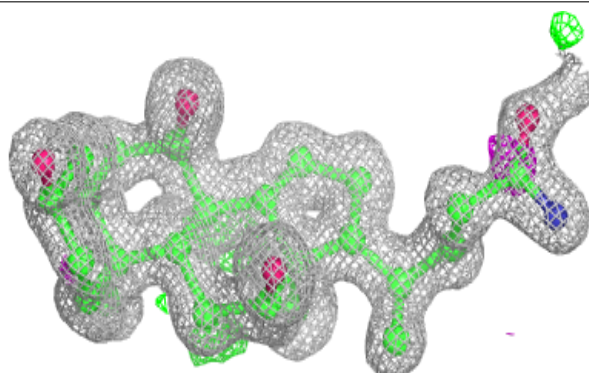


**Electron density around CPS A 406 (B):**

$2mF_o-DF_c$  (at 0.7 rmsd) in gray  
 $mF_o-DF_c$  (at 3 rmsd) in purple (negative)  
and green (positive)

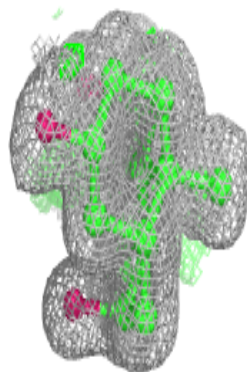
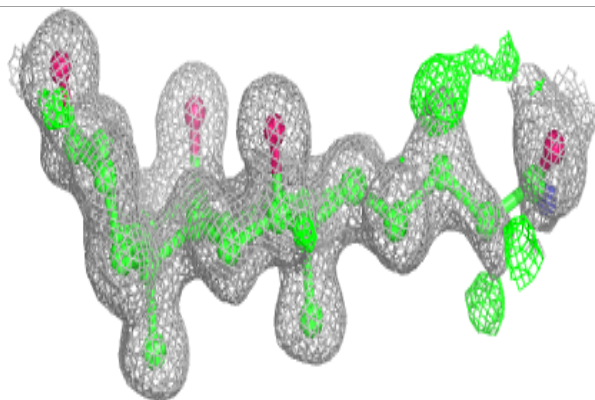
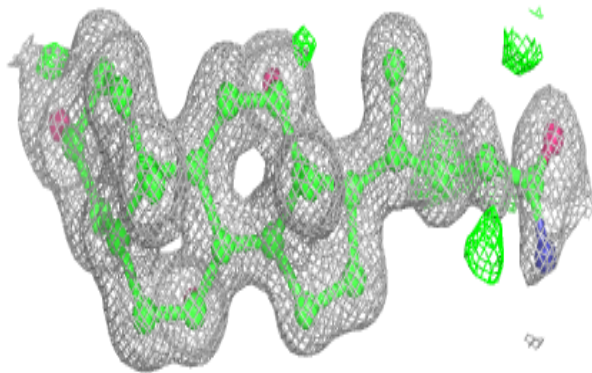
**Electron density around CPS A 405:**

$2mF_o-DF_c$  (at 0.7 rmsd) in gray  
 $mF_o-DF_c$  (at 3 rmsd) in purple (negative)  
and green (positive)



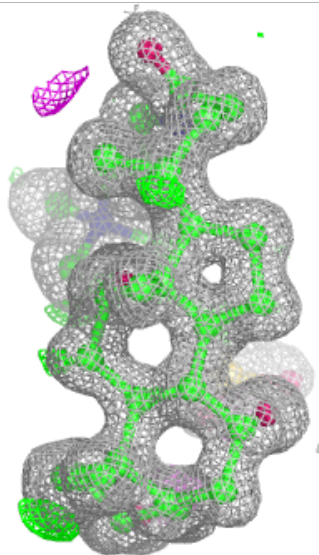
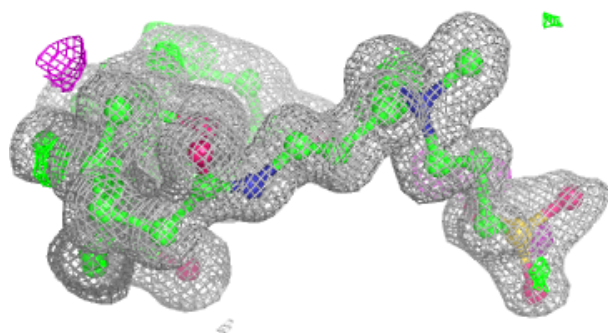
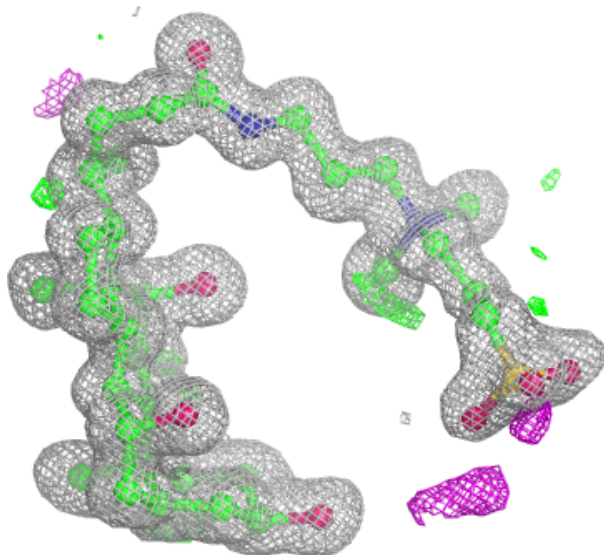
**Electron density around CPS A 404:**

$2mF_o-DF_c$  (at 0.7 rmsd) in gray  
 $mF_o-DF_c$  (at 3 rmsd) in purple (negative)  
and green (positive)



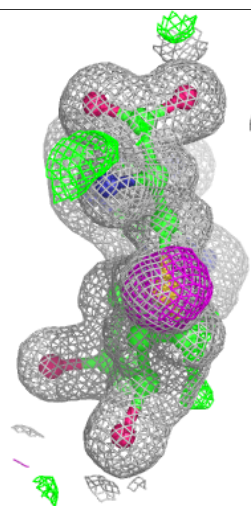
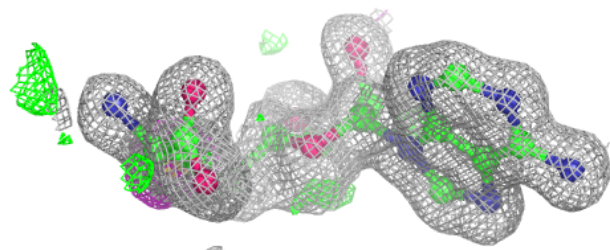
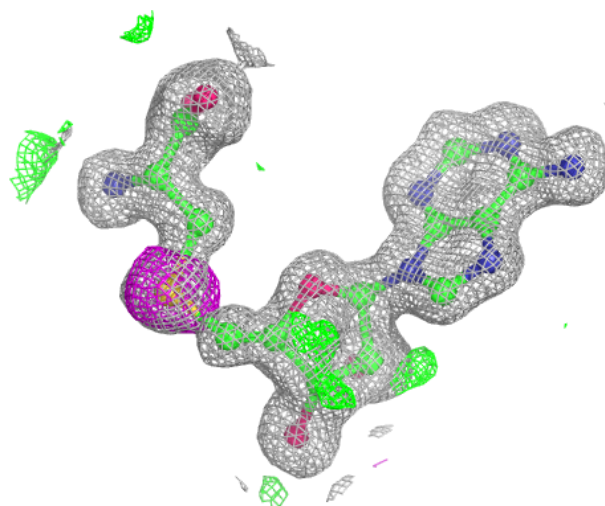
**Electron density around CPS A 402:**

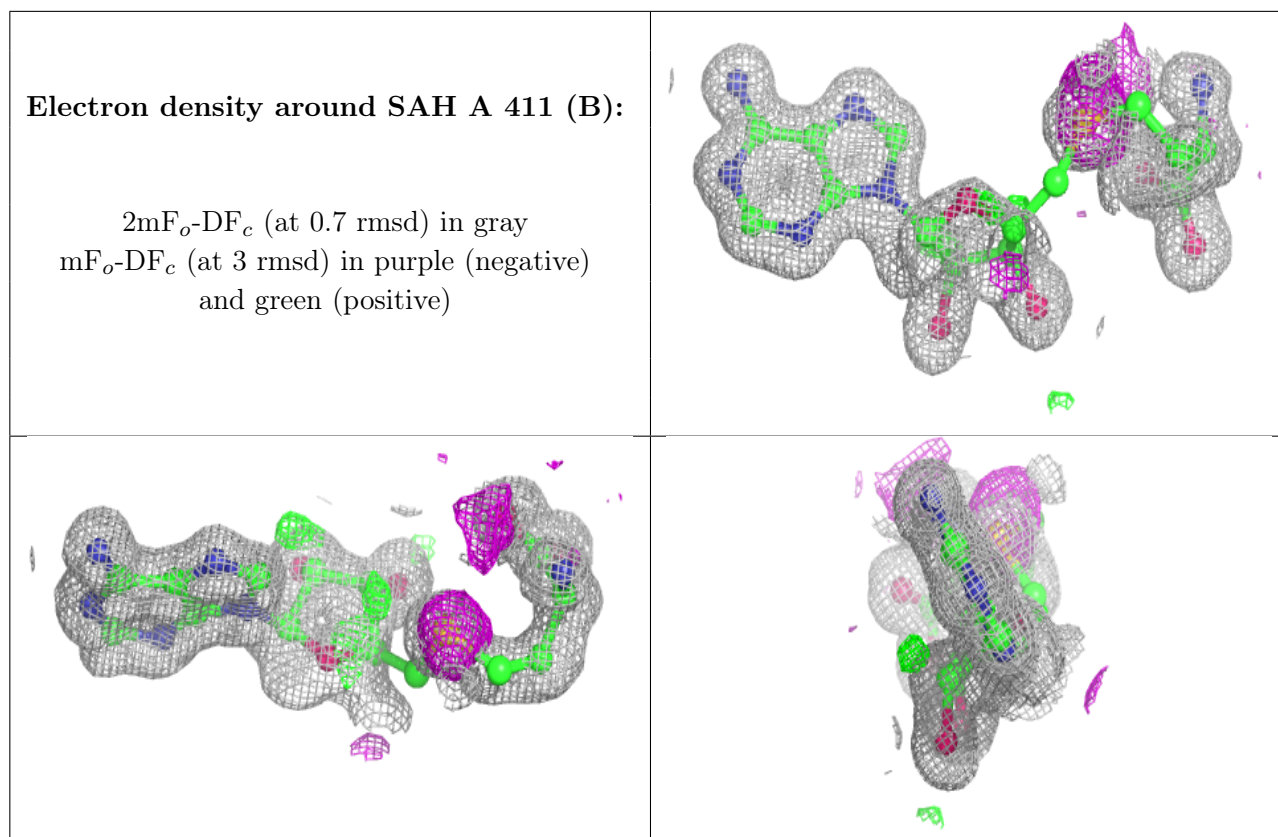
$2mF_o-DF_c$  (at 0.7 rmsd) in gray  
 $mF_o-DF_c$  (at 3 rmsd) in purple (negative)  
and green (positive)



**Electron density around 5X8 A 410 (A):**

$2mF_o-DF_c$  (at 0.7 rmsd) in gray  
 $mF_o-DF_c$  (at 3 rmsd) in purple (negative)  
and green (positive)





## 6.5 Other polymers [i](#)

There are no such residues in this entry.