



Full wwPDB EM Validation Report ⓘ

Jan 24, 2024 – 05:35 PM EST

PDB ID : 8FF5
EMDB ID : EMD-29040
Title : Cryo-EM structure of Cascade-DNA-fullRloop in type I-B CAST system
Authors : Chang, L.; Wang, S.
Deposited on : 2022-12-07
Resolution : 3.13 Å (reported)

This is a Full wwPDB EM Validation Report for a publicly released PDB entry.

We welcome your comments at validation@mail.wwpdb.org

A user guide is available at

<https://www.wwpdb.org/validation/2017/EMValidationReportHelp>

with specific help available everywhere you see the ⓘ symbol.

The types of validation reports are described at

<http://www.wwpdb.org/validation/2017/FAQs#types>.

The following versions of software and data (see [references ⓘ](#)) were used in the production of this report:

EMDB validation analysis : 0.0.1.dev70
MolProbity : 4.02b-467
Percentile statistics : 20191225.v01 (using entries in the PDB archive December 25th 2019)
MapQ : 1.9.9
Ideal geometry (proteins) : Engh & Huber (2001)
Ideal geometry (DNA, RNA) : Parkinson et al. (1996)
Validation Pipeline (wwPDB-VP) : 2.36

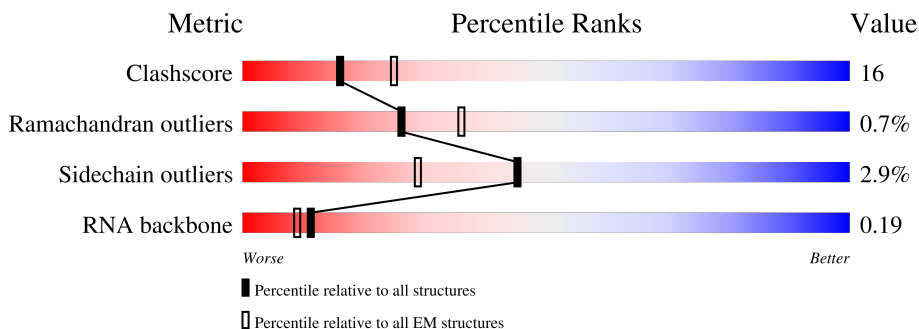
1 Overall quality at a glance i

The following experimental techniques were used to determine the structure:

ELECTRON MICROSCOPY

The reported resolution of this entry is 3.13 Å.

Percentile scores (ranging between 0-100) for global validation metrics of the entry are shown in the following graphic. The table shows the number of entries on which the scores are based.






Metric	Whole archive (#Entries)	EM structures (#Entries)
Clashscore	158937	4297
Ramachandran outliers	154571	4023
Sidechain outliers	154315	3826
RNA backbone	4643	859

The table below summarises the geometric issues observed across the polymeric chains and their fit to the map. The red, orange, yellow and green segments of the bar indicate the fraction of residues that contain outliers for ≥ 3 , 2, 1 and 0 types of geometric quality criteria respectively. A grey segment represents the fraction of residues that are not modelled. The numeric value for each fraction is indicated below the corresponding segment, with a dot representing fractions $\leq 5\%$. The upper red bar (where present) indicates the fraction of residues that have poor fit to the EM map (all-atom inclusion $< 40\%$). The numeric value is given above the bar.

Mol	Chain	Length	Quality of chain
1	A	212	67% 31% .
2	B	220	29% 61% 34% . .
3	C	323	. 59% 28% . 12%
3	D	323	58% 28% . . 12%
3	E	323	59% 27% . 11%
3	F	323	59% 27% . 12%
3	G	323	59% 28% . 12%

Continued on next page...

Continued from previous page...

Mol	Chain	Length	Quality of chain
3	H	323	
4	I	534	
5	J	138	
5	K	138	
5	L	138	
6	M	71	
7	N	65	
8	O	65	

2 Entry composition i

There are 8 unique types of molecules in this entry. The entry contains 27124 atoms, of which 0 are hydrogens and 0 are deuteriums.

In the tables below, the AltConf column contains the number of residues with at least one atom in alternate conformation and the Trace column contains the number of residues modelled with at most 2 atoms.

- Molecule 1 is a protein called Nostoc sp. 'Peltigera membranacea cyanobiont' 210A.

Mol	Chain	Residues	Atoms					AltConf	Trace
			Total	C	N	O	S		
1	A	212	Total	C	N	O	S	0	0
			1745	1116	313	305	11		

- Molecule 2 is a protein called Type I-B CRISPR-associated protein Cas6.

Mol	Chain	Residues	Atoms					AltConf	Trace
			Total	C	N	O	S		
2	B	213	Total	C	N	O	S	0	0
			1702	1084	297	316	5		

- Molecule 3 is a protein called Type I-B CRISPR-associated protein Cas7.

Mol	Chain	Residues	Atoms					AltConf	Trace
			Total	C	N	O	S		
3	C	285	Total	C	N	O	S	0	0
			2323	1490	393	430	10		
3	D	285	Total	C	N	O	S	0	0
			2323	1490	393	430	10		
3	E	286	Total	C	N	O	S	0	0
			2330	1494	394	432	10		
3	F	285	Total	C	N	O	S	0	0
			2323	1490	393	430	10		
3	G	285	Total	C	N	O	S	0	0
			2323	1490	393	430	10		
3	H	285	Total	C	N	O	S	0	0
			2323	1490	393	430	10		

- Molecule 4 is a protein called Type I-B CRISPR-associated protein Cas8.

Mol	Chain	Residues	Atoms					AltConf	Trace
			Total	C	N	O	S		
4	I	494	Total	C	N	O	S	0	0
			4147	2689	698	748	12		

There are 10 discrepancies between the modelled and reference sequences:

Chain	Residue	Modelled	Actual	Comment	Reference
I	-7	MET	-	initiating methionine	UNP A0A235IGR9
I	-6	HIS	-	expression tag	UNP A0A235IGR9
I	-5	HIS	-	expression tag	UNP A0A235IGR9
I	-4	HIS	-	expression tag	UNP A0A235IGR9
I	-3	HIS	-	expression tag	UNP A0A235IGR9
I	-2	HIS	-	expression tag	UNP A0A235IGR9
I	-1	HIS	-	expression tag	UNP A0A235IGR9
I	0	HIS	-	expression tag	UNP A0A235IGR9
I	1	HIS	-	expression tag	UNP A0A235IGR9
I	2	ILE	-	expression tag	UNP A0A235IGR9

- Molecule 5 is a protein called Type I-B CRISPR-associated protein Cas11.

Mol	Chain	Residues	Atoms					AltConf	Trace
5	J	109	Total	C	N	O	S	0	0
			917	598	150	167	2		
5	K	109	Total	C	N	O	S	0	0
			917	598	150	167	2		
5	L	109	Total	C	N	O	S	0	0
			917	598	150	167	2		

- Molecule 6 is a RNA chain called RNA.

Mol	Chain	Residues	Atoms					AltConf	Trace
6	M	63	Total	C	N	O	P	0	0
			1342	600	236	443	63		

- Molecule 7 is a DNA chain called Target DNA strand.

Mol	Chain	Residues	Atoms					AltConf	Trace
7	N	53	Total	C	N	O	P	0	0
			1079	519	186	321	53		

- Molecule 8 is a DNA chain called Non-target DNA strand.

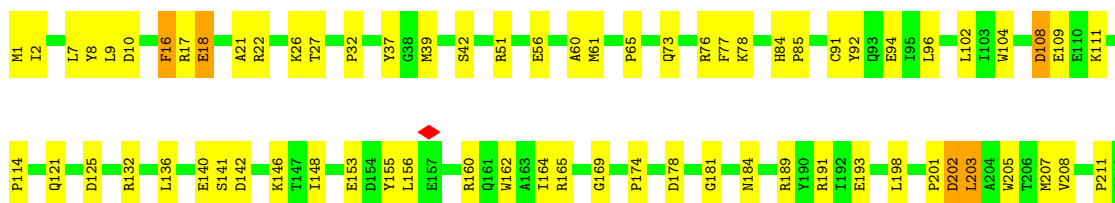
Mol	Chain	Residues	Atoms					AltConf	Trace
8	O	20	Total	C	N	O	P	0	0
			413	198	75	120	20		

3 Residue-property plots

These plots are drawn for all protein, RNA, DNA and oligosaccharide chains in the entry. The first graphic for a chain summarises the proportions of the various outlier classes displayed in the second graphic. The second graphic shows the sequence view annotated by issues in geometry and atom inclusion in map density. Residues are color-coded according to the number of geometric quality criteria for which they contain at least one outlier: green = 0, yellow = 1, orange = 2 and red = 3 or more. A red diamond above a residue indicates a poor fit to the EM map for this residue (all-atom inclusion < 40%). Stretches of 2 or more consecutive residues without any outlier are shown as a green connector. Residues present in the sample, but not in the model, are shown in grey.

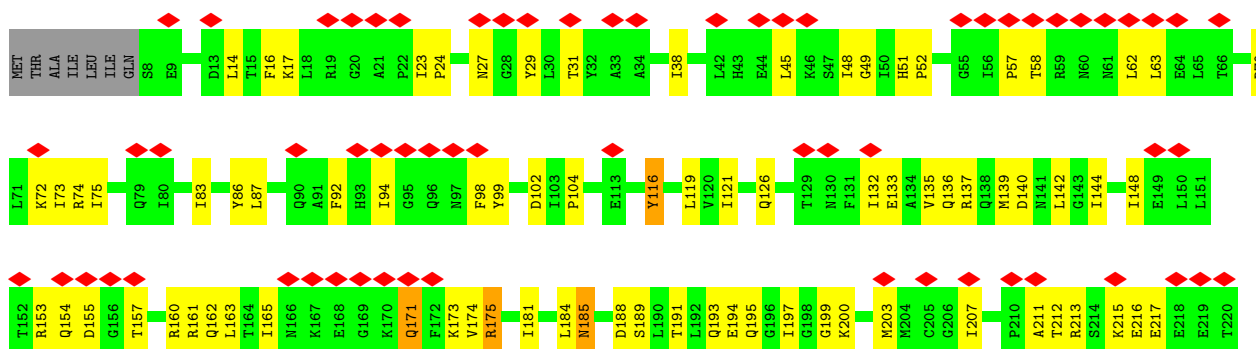
- Molecule 1: Nostoc sp. 'Peltigera membranacea cyanobiont' 210A

Chain A: 



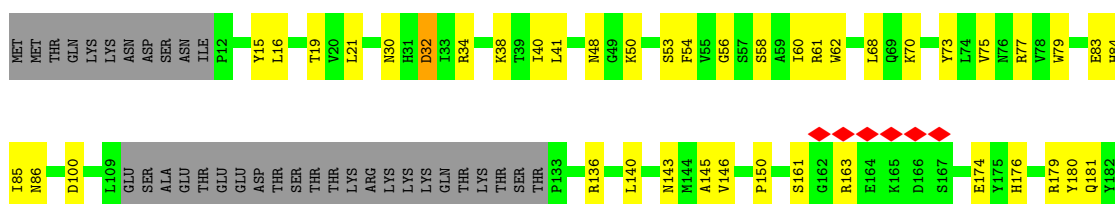
- Molecule 2: Type I-B CRISPR-associated protein Cas6

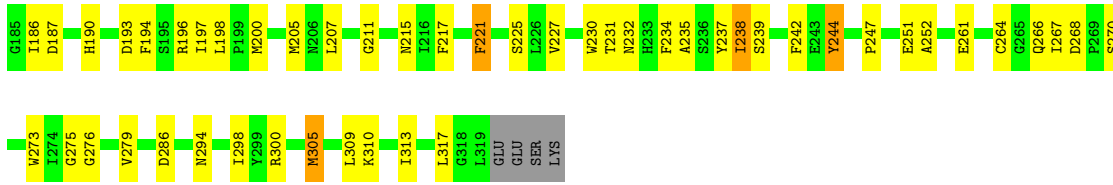
Chain B: 



- Molecule 3: Type I-B CRISPR-associated protein Cas7

Chain C: 





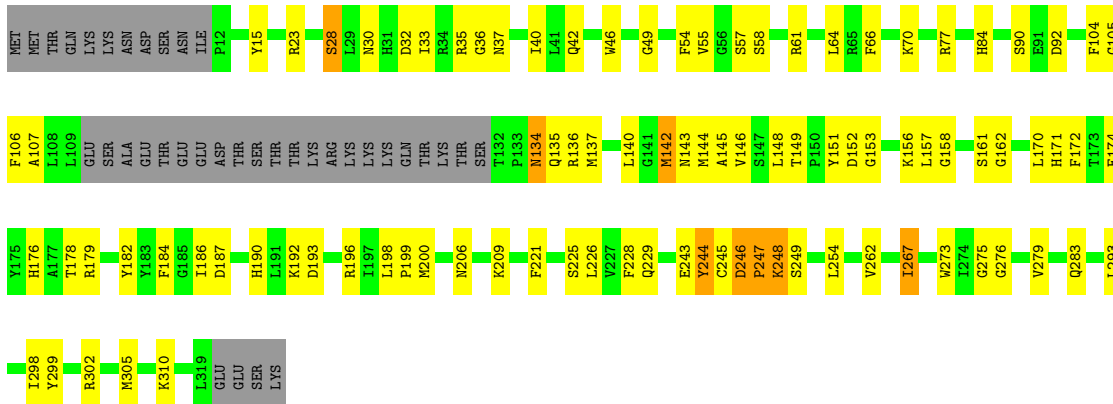
- Molecule 3: Type I-B CRISPR-associated protein Cas7

Chain D: 58% 28% 12%



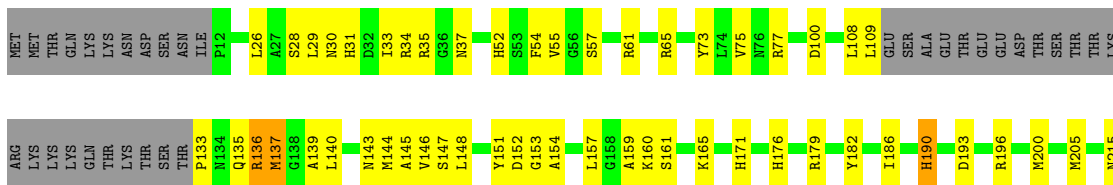
- Molecule 3: Type I-B CRISPR-associated protein Cas7

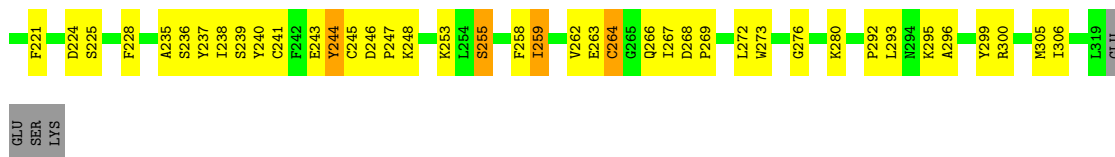
Chain E: 59% 27% 11%



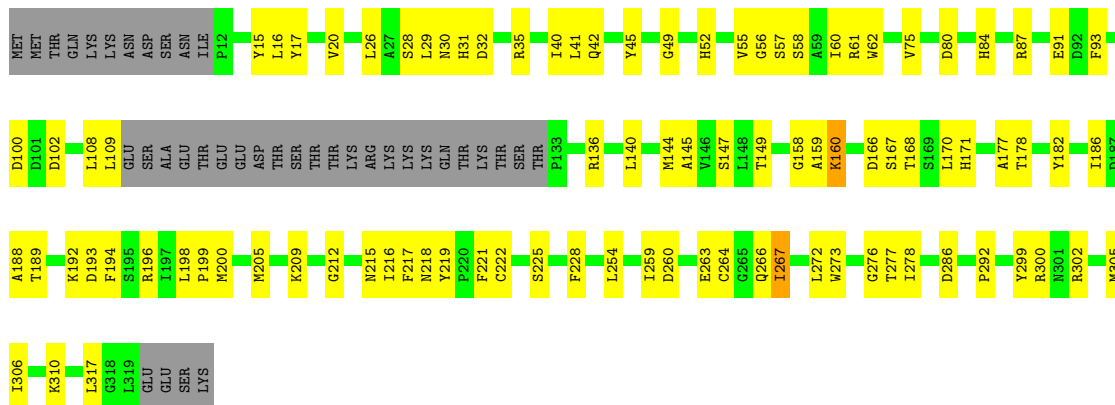
- Molecule 3: Type I-B CRISPR-associated protein Cas7

Chain F: 59% 27% 12%

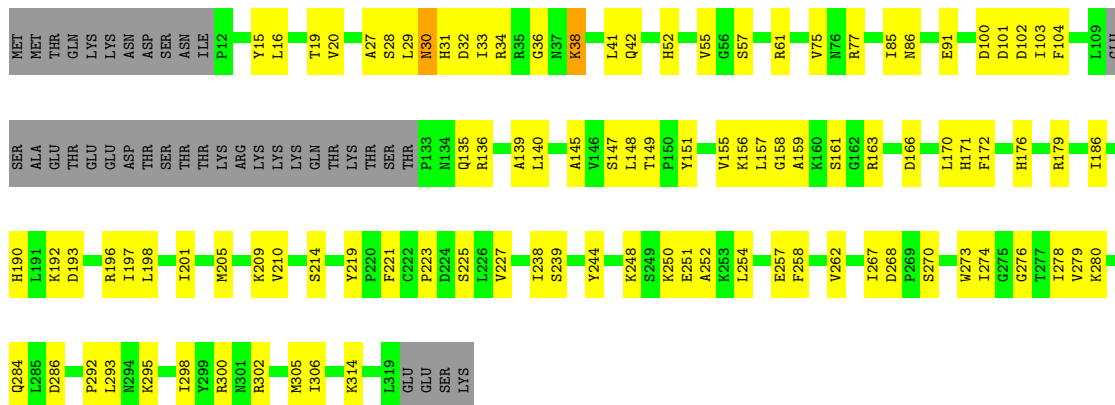




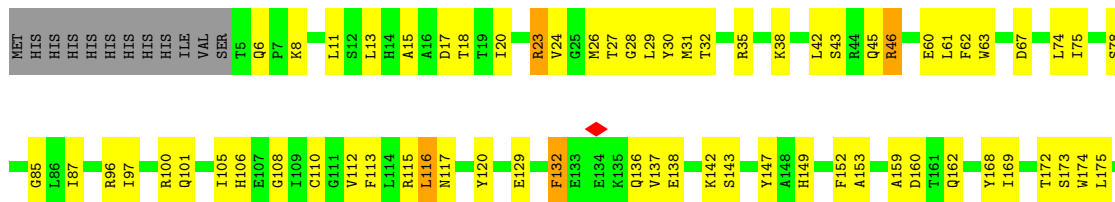
• Molecule 3: Type I-B CRISPR-associated protein Cas7

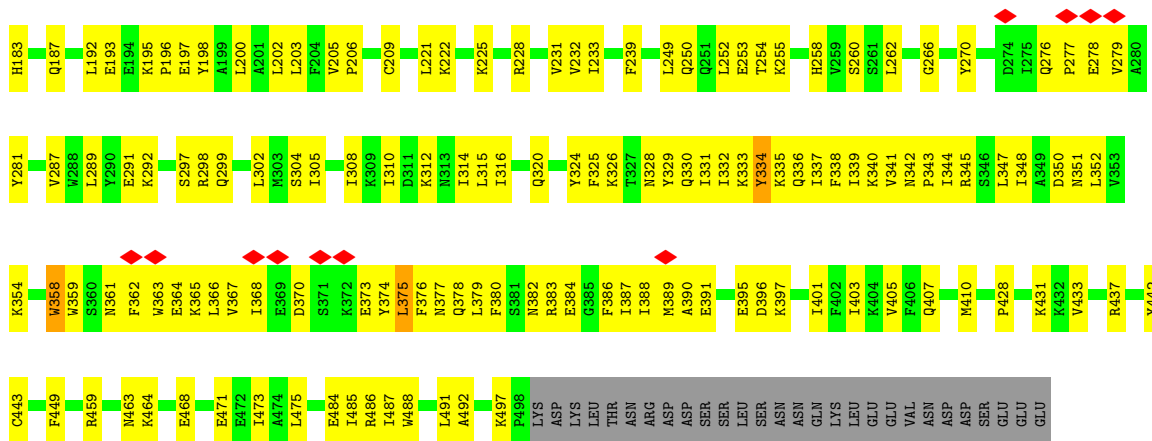


• Molecule 3: Type I-B CRISPR-associated protein Cas7

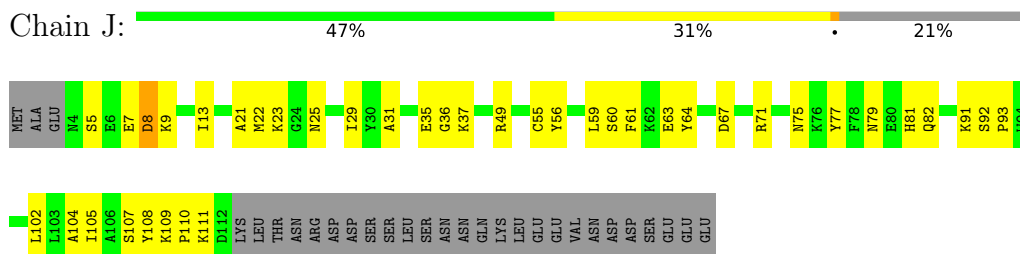


• Molecule 4: Type I-B CRISPR-associated protein Cas8

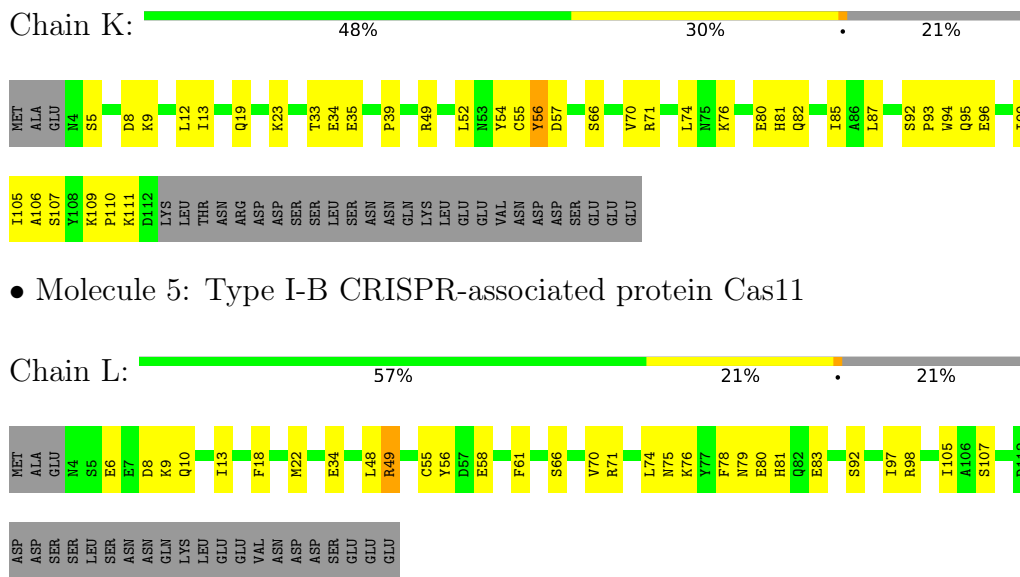




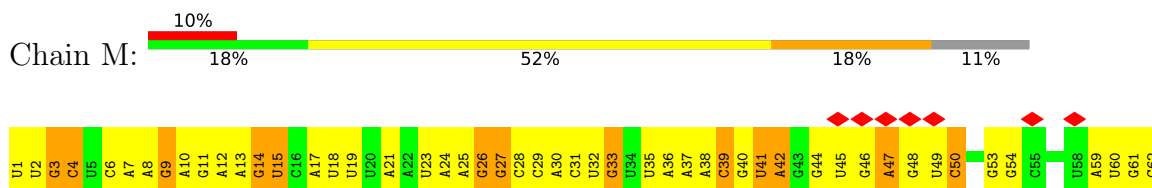
• Molecule 5: Type I-B CRISPR-associated protein Cas11



• Molecule 5: Type I-B CRISPR-associated protein Cas11



• Molecule 6: RNA



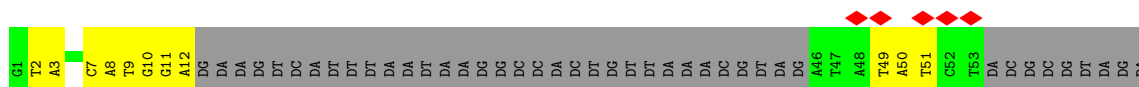
C63
G U U A G C G

• Molecule 7: Target DNA strand



A64
G65

• Molecule 8: Non-target DNA strand



DT
DA
DT

4 Experimental information

Property	Value	Source
EM reconstruction method	SINGLE PARTICLE	Depositor
Imposed symmetry	POINT, Not provided	
Number of particles used	116526	Depositor
Resolution determination method	FSC 0.143 CUT-OFF	Depositor
CTF correction method	PHASE FLIPPING ONLY	Depositor
Microscope	FEI TITAN KRIOS	Depositor
Voltage (kV)	300	Depositor
Electron dose ($e^-/\text{\AA}^2$)	54	Depositor
Minimum defocus (nm)	800	Depositor
Maximum defocus (nm)	2000	Depositor
Magnification	Not provided	
Image detector	GATAN K3 BIOQUANTUM (6k x 4k)	Depositor
Maximum map value	0.701	Depositor
Minimum map value	-0.218	Depositor
Average map value	0.005	Depositor
Map value standard deviation	0.023	Depositor
Recommended contour level	0.048	Depositor
Map size (\AA)	269.824, 269.824, 269.824	wwPDB
Map dimensions	256, 256, 256	wwPDB
Map angles ($^\circ$)	90.0, 90.0, 90.0	wwPDB
Pixel spacing (\AA)	1.054, 1.054, 1.054	Depositor

5 Model quality [i](#)

5.1 Standard geometry [i](#)

The Z score for a bond length (or angle) is the number of standard deviations the observed value is removed from the expected value. A bond length (or angle) with $|Z| > 5$ is considered an outlier worth inspection. RMSZ is the root-mean-square of all Z scores of the bond lengths (or angles).

Mol	Chain	Bond lengths		Bond angles	
		RMSZ	# Z >5	RMSZ	# Z >5
1	A	0.26	0/1788	0.57	0/2422
2	B	0.26	0/1735	0.56	0/2341
3	C	0.26	0/2384	0.49	0/3220
3	D	0.26	0/2384	0.48	0/3220
3	E	0.25	0/2391	0.45	0/3231
3	F	0.26	0/2384	0.51	0/3220
3	G	0.25	0/2384	0.49	0/3220
3	H	0.26	0/2384	0.50	0/3220
4	I	0.26	0/4249	0.46	0/5741
5	J	0.27	0/938	0.50	0/1258
5	K	0.27	0/938	0.45	0/1258
5	L	0.27	0/938	0.44	0/1258
6	M	0.28	0/1500	0.86	0/2335
7	N	0.53	0/1207	0.93	0/1859
8	O	0.45	0/462	0.93	0/709
All	All	0.28	0/28066	0.56	0/38512

There are no bond length outliers.

There are no bond angle outliers.

There are no chirality outliers.

There are no planarity outliers.

5.2 Too-close contacts [i](#)

In the following table, the Non-H and H(model) columns list the number of non-hydrogen atoms and hydrogen atoms in the chain respectively. The H(added) column lists the number of hydrogen atoms added and optimized by MolProbity. The Clashes column lists the number of clashes within the asymmetric unit, whereas Symm-Clashes lists symmetry-related clashes.

Mol	Chain	Non-H	H(model)	H(added)	Clashes	Symm-Clashes
1	A	1745	0	1772	48	0

Continued on next page...

Continued from previous page...

Mol	Chain	Non-H	H(model)	H(added)	Clashes	Symm-Clashes
2	B	1702	0	1735	52	0
3	C	2323	0	2249	69	0
3	D	2323	0	2249	82	0
3	E	2330	0	2255	79	0
3	F	2323	0	2249	84	0
3	G	2323	0	2249	71	0
3	H	2323	0	2249	72	0
4	I	4147	0	4143	189	0
5	J	917	0	925	34	0
5	K	917	0	925	35	0
5	L	917	0	925	27	0
6	M	1342	0	675	57	0
7	N	1079	0	603	47	0
8	O	413	0	229	21	0
All	All	27124	0	25432	840	0

The all-atom clashscore is defined as the number of clashes found per 1000 atoms (including hydrogen atoms). The all-atom clashscore for this structure is 16.

All (840) close contacts within the same asymmetric unit are listed below, sorted by their clash magnitude.

Atom-1	Atom-2	Interatomic distance (Å)	Clash overlap (Å)
8:O:10:DG:H5''	8:O:11:DG:C6	1.37	1.59
8:O:10:DG:C5'	8:O:11:DG:C6	2.19	1.25
8:O:10:DG:C5'	8:O:11:DG:O6	1.89	1.21
8:O:10:DG:H5''	8:O:11:DG:O6	1.46	1.08
8:O:10:DG:H5''	8:O:11:DG:N1	1.68	1.06
4:I:366:LEU:HD13	4:I:379:LEU:HD12	1.35	1.04
4:I:142:LYS:HD2	8:O:11:DG:H3'	1.44	0.96
4:I:366:LEU:HD22	4:I:379:LEU:HB2	1.48	0.94
4:I:137:VAL:HG13	4:I:335:LYS:HA	1.50	0.92
4:I:142:LYS:NZ	8:O:11:DG:C8	2.39	0.91
5:J:49:ARG:HH12	5:K:71:ARG:HG3	1.34	0.90
7:N:44:DA:H4'	7:N:45:DA:O5'	1.74	0.86
3:H:279:VAL:HB	3:H:300:ARG:HD2	1.59	0.84
4:I:336:GLN:HB3	4:I:338:PHE:CE2	2.15	0.81
2:B:200:LYS:HB3	2:B:203:MET:HB2	1.62	0.80
2:B:199:GLY:HA3	6:M:61:G:H5'	1.63	0.80
4:I:142:LYS:NZ	8:O:11:DG:N7	2.31	0.79
5:K:34:GLU:HG2	5:K:35:GLU:HG3	1.65	0.79
8:O:10:DG:H5'	8:O:11:DG:O6	1.83	0.78

Continued on next page...

Continued from previous page...

Atom-1	Atom-2	Interatomic distance (Å)	Clash overlap (Å)
4:I:302:LEU:HD21	4:I:305:ILE:HD11	1.65	0.78
6:M:35:U:O4	6:M:36:A:N6	2.16	0.78
6:M:23:U:O4	6:M:24:A:N6	2.16	0.78
4:I:377:ASN:HA	4:I:380:PHE:CD2	2.19	0.77
3:D:165:LYS:HE3	6:M:40:G:H21	1.49	0.77
2:B:38:ILE:HD13	2:B:92:PHE:HB3	1.67	0.77
3:C:30:ASN:HD22	3:C:56:GLY:H	1.31	0.77
1:A:104:TRP:HB3	1:A:205:TRP:CH2	2.21	0.75
4:I:332:ILE:HG12	4:I:337:ILE:HG23	1.68	0.74
4:I:329:TYR:HB3	4:I:340:LYS:HB3	1.70	0.74
5:J:55:CYS:SG	5:J:98:ARG:NH1	2.60	0.74
1:A:164:ILE:HG23	1:A:203:LEU:HD13	1.70	0.74
4:I:344:ILE:HD13	4:I:347:LEU:HD12	1.68	0.74
3:D:55:VAL:HB	3:D:145:ALA:HB3	1.70	0.73
1:A:17:ARG:HA	1:A:27:THR:HA	1.69	0.73
3:H:55:VAL:HB	3:H:145:ALA:HB3	1.71	0.73
3:D:16:LEU:HD23	3:D:186:ILE:HD11	1.70	0.73
4:I:333:LYS:HB2	4:I:336:GLN:HB2	1.71	0.72
3:C:61:ARG:NH1	6:M:37:A:OP1	2.22	0.72
4:I:344:ILE:HG13	4:I:386:PHE:HZ	1.55	0.72
4:I:11:LEU:HD21	4:I:197:GLU:HB2	1.71	0.72
4:I:258:HIS:CG	4:I:339:ILE:HD12	2.24	0.72
4:I:138:GLU:H	4:I:335:LYS:HG2	1.55	0.71
5:K:110:PRO:HD3	5:L:79:ASN:HD22	1.54	0.71
3:H:292:PRO:HA	3:H:295:LYS:HE3	1.73	0.71
3:H:61:ARG:NH1	6:M:7:A:OP1	2.23	0.71
2:B:153:ARG:HD3	2:B:157:THR:HB	1.71	0.71
3:F:136:ARG:O	3:G:84:HIS:NE2	2.24	0.71
4:I:348:ILE:HG12	4:I:362:PHE:CZ	2.25	0.70
4:I:379:LEU:HA	4:I:386:PHE:HE2	1.55	0.70
3:E:186:ILE:HG21	3:E:200:MET:HE1	1.73	0.70
1:A:76:ARG:NH1	7:N:57:DA:OP2	2.22	0.70
3:C:84:HIS:CE1	6:M:41:U:H4'	2.26	0.70
3:D:186:ILE:HG21	3:D:200:MET:HE1	1.73	0.70
3:D:145:ALA:HA	3:D:182:TYR:HB3	1.72	0.69
3:D:61:ARG:NH1	6:M:31:C:OP1	2.25	0.69
3:H:251:GLU:N	3:H:251:GLU:OE2	2.26	0.69
3:F:61:ARG:NH1	6:M:19:U:OP1	2.24	0.69
5:J:21:ALA:HB2	5:J:75:ASN:HD21	1.58	0.68
3:G:149:THR:HB	3:G:178:THR:HG23	1.73	0.68
3:F:215:ASN:ND2	6:M:25:A:OP2	2.27	0.68

Continued on next page...

Continued from previous page...

Atom-1	Atom-2	Interatomic distance (Å)	Clash overlap (Å)
3:G:61:ARG:NH1	6:M:13:A:OP1	2.27	0.68
3:D:140:LEU:HA	3:D:186:ILE:HG22	1.75	0.67
4:I:13:LEU:HD22	4:I:23:ARG:HG3	1.75	0.67
4:I:221:LEU:HG	4:I:338:PHE:HD1	1.60	0.67
3:E:148:LEU:HD11	3:E:243:GLU:HA	1.76	0.66
3:H:186:ILE:HD13	3:H:197:ILE:HD13	1.78	0.66
3:H:102:ASP:OD2	3:H:196:ARG:NH1	2.26	0.66
4:I:222:LYS:HE2	4:I:333:LYS:HD2	1.77	0.66
4:I:373:GLU:HG2	4:I:376:PHE:HD2	1.60	0.66
4:I:379:LEU:HA	4:I:386:PHE:CE2	2.31	0.66
3:D:225:SER:HA	3:D:276:GLY:HA3	1.77	0.66
3:G:136:ARG:HH21	3:G:192:LYS:HG2	1.59	0.66
3:C:309:LEU:O	3:C:313:ILE:HG12	1.95	0.66
3:E:198:LEU:HD22	3:E:310:LYS:HG2	1.77	0.65
3:E:156:LYS:NZ	3:E:157:LEU:O	2.29	0.65
3:E:61:ARG:NH1	6:M:25:A:OP1	2.29	0.65
3:F:246:ASP:OD2	3:F:253:LYS:NZ	2.29	0.65
1:A:109:GLU:O	1:A:111:LYS:NZ	2.29	0.65
2:B:51:HIS:HB3	2:B:72:LYS:HB3	1.78	0.65
1:A:142:ASP:OD1	3:H:61:ARG:NE	2.27	0.64
3:G:102:ASP:OD2	3:G:196:ARG:NH1	2.30	0.64
5:K:12:LEU:HD22	5:L:83:GLU:HG2	1.79	0.64
3:G:31:HIS:HA	3:G:41:LEU:HA	1.78	0.64
3:C:48:ASN:HB2	3:C:50:LYS:HE2	1.77	0.64
3:C:77:ARG:NH2	6:M:38:A:OP2	2.31	0.64
5:J:77:TYR:O	5:J:81:HIS:ND1	2.27	0.64
5:K:109:LYS:HD3	5:L:74:LEU:HA	1.79	0.64
3:D:49:GLY:HA2	3:E:248:LYS:HB2	1.80	0.64
4:I:75:ILE:HD12	4:I:153:ALA:HB2	1.79	0.64
2:B:189:SER:O	2:B:193:GLN:HG3	1.98	0.64
3:G:147:SER:HB2	3:G:178:THR:HG21	1.78	0.64
3:E:244:TYR:CE2	3:E:246:ASP:HB2	2.32	0.64
5:L:9:LYS:O	5:L:13:ILE:HG12	1.98	0.64
4:I:43:SER:HA	4:I:46:ARG:HE	1.63	0.64
3:D:42:GLN:HG3	3:D:54:PHE:HB2	1.80	0.63
3:E:49:GLY:HA2	3:F:248:LYS:HB2	1.80	0.63
4:I:112:VAL:HG13	4:I:113:PHE:HD1	1.62	0.63
2:B:160:ARG:HB2	6:M:50:C:C4	2.32	0.63
3:D:182:TYR:HA	3:D:240:TYR:HE1	1.63	0.63
3:C:161:SER:O	7:N:21:DC:N4	2.32	0.63
4:I:351:ASN:HA	4:I:354:LYS:HD2	1.79	0.63

Continued on next page...

Continued from previous page...

Atom-1	Atom-2	Interatomic distance (Å)	Clash overlap (Å)
4:I:366:LEU:O	4:I:370:ASP:HB3	1.98	0.62
5:J:8:ASP:HB3	5:K:87:LEU:HD11	1.80	0.62
5:J:102:LEU:HD22	5:K:70:VAL:HG21	1.81	0.62
1:A:189:ARG:NH2	4:I:18:THR:OG1	2.32	0.62
3:D:160:LYS:HD3	6:M:37:A:H1'	1.81	0.62
3:C:143:ASN:ND2	3:D:218:ASN:O	2.33	0.62
4:I:384:GLU:O	4:I:388:ILE:HG12	1.99	0.62
3:D:24:TYR:CD1	3:D:250:LYS:HB3	2.35	0.62
3:F:262:VAL:HG11	3:F:293:LEU:HD13	1.82	0.62
1:A:77:PHE:HB2	4:I:183:HIS:HB3	1.82	0.61
3:F:143:ASN:OD1	3:G:218:ASN:N	2.33	0.61
3:G:93:PHE:HE2	3:G:108:LEU:HB3	1.65	0.61
3:C:16:LEU:HD23	3:C:186:ILE:HD12	1.82	0.61
3:F:61:ARG:NH2	3:F:140:LEU:O	2.33	0.61
7:N:22:DT:H2''	7:N:23:DA:H5'	1.83	0.61
5:L:48:LEU:HD22	5:L:105:ILE:HD11	1.82	0.61
3:F:33:ILE:HG13	4:I:442:TYR:CZ	2.35	0.61
3:F:239:SER:O	3:F:241:CYS:N	2.33	0.61
4:I:358:TRP:CE3	4:I:359:TRP:HD1	2.19	0.61
2:B:136:GLN:NE2	2:B:140:ASP:OD1	2.33	0.61
4:I:129:GLU:HB3	4:I:136:GLN:HB3	1.83	0.61
3:H:159:ALA:HB2	3:H:170:LEU:HD23	1.82	0.60
3:D:215:ASN:ND2	6:M:37:A:OP2	2.34	0.60
3:D:40:ILE:H	3:D:40:ILE:HD12	1.66	0.60
3:D:261:GLU:OE1	3:E:302:ARG:NH2	2.35	0.60
4:I:348:ILE:HG23	4:I:358:TRP:HB3	1.82	0.60
3:D:33:ILE:HG13	5:K:54:TYR:CE2	2.37	0.60
3:H:254:LEU:HD13	3:H:278:ILE:HG12	1.84	0.60
3:C:181:GLN:NE2	3:C:242:PHE:O	2.31	0.60
4:I:343:PRO:HG2	4:I:375:LEU:HD22	1.82	0.60
2:B:162:GLN:HE21	2:B:173:LYS:HD2	1.66	0.60
5:J:9:LYS:O	5:J:13:ILE:HG23	2.02	0.60
3:F:266:GLN:HE22	3:G:302:ARG:HH22	1.48	0.60
4:I:168:TYR:HB3	4:I:193:GLU:HB3	1.84	0.60
3:E:134:ASN:H	3:E:134:ASN:HD22	1.48	0.60
3:D:136:ARG:O	3:E:84:HIS:NE2	2.34	0.59
3:G:205:MET:HG3	3:G:306:ILE:HG13	1.83	0.59
2:B:213:ARG:HH12	6:M:47:A:N6	2.00	0.59
4:I:112:VAL:HG21	4:I:231:VAL:HG21	1.83	0.59
4:I:266:GLY:HA3	4:I:308:ILE:HD12	1.85	0.59
4:I:232:VAL:HG12	4:I:287:VAL:HG22	1.84	0.59

Continued on next page...

Continued from previous page...

Atom-1	Atom-2	Interatomic distance (Å)	Clash overlap (Å)
3:C:62:TRP:CZ3	6:M:38:A:C2	2.90	0.59
3:C:193:ASP:HB3	3:C:196:ARG:HG3	1.85	0.59
3:H:29:LEU:HD12	3:H:55:VAL:HG21	1.85	0.59
4:I:359:TRP:CZ2	4:I:386:PHE:HB3	2.38	0.59
5:L:58:GLU:N	5:L:58:GLU:OE1	2.35	0.59
5:K:57:ASP:OD1	5:K:94:TRP:NE1	2.36	0.59
3:G:299:TYR:HB2	3:G:305:MET:HB2	1.84	0.59
3:G:84:HIS:O	3:H:163:ARG:N	2.35	0.59
4:I:255:LYS:NZ	4:I:328:ASN:O	2.32	0.59
4:I:484:GLU:O	4:I:488:TRP:HD1	1.86	0.58
3:E:28:SER:OG	3:E:174:GLU:O	2.21	0.58
3:E:33:ILE:HG22	3:E:40:ILE:HD11	1.85	0.58
5:K:9:LYS:O	5:K:13:ILE:HG23	2.03	0.58
3:G:52:HIS:ND1	3:G:147:SER:O	2.34	0.58
3:H:91:GLU:OE2	3:H:91:GLU:N	2.30	0.58
8:O:10:DG:H3'	8:O:11:DG:C2	2.39	0.58
3:E:225:SER:HA	3:E:276:GLY:HA3	1.86	0.58
3:E:244:TYR:HE2	3:E:246:ASP:HB2	1.68	0.58
4:I:101:GLN:NE2	4:I:252:LEU:O	2.35	0.58
4:I:379:LEU:O	4:I:383:ARG:N	2.37	0.58
3:E:134:ASN:HD22	3:E:134:ASN:N	2.02	0.57
3:D:61:ARG:NH2	3:D:140:LEU:O	2.36	0.57
5:K:100:TRP:HA	5:K:103:LEU:HD12	1.86	0.57
5:K:106:ALA:HA	5:K:109:LYS:HZ2	1.70	0.57
1:A:146:LYS:HD3	3:H:239:SER:HB3	1.86	0.57
3:G:166:ASP:OD1	3:G:167:SER:N	2.34	0.57
3:H:179:ARG:NH1	3:H:250:LYS:O	2.38	0.57
4:I:221:LEU:HG	4:I:338:PHE:CD1	2.39	0.57
4:I:344:ILE:O	4:I:348:ILE:HG13	2.04	0.57
2:B:135:VAL:O	2:B:139:MET:HB2	2.05	0.57
2:B:203:MET:HE3	2:B:203:MET:HA	1.87	0.57
3:C:84:HIS:NE2	6:M:41:U:H4'	2.20	0.57
3:D:182:TYR:HA	3:D:240:TYR:CE1	2.40	0.57
3:E:15:TYR:CE1	3:E:187:ASP:HB3	2.39	0.57
4:I:35:ARG:HA	4:I:38:LYS:HD2	1.86	0.57
3:H:16:LEU:HD21	3:H:201:ILE:HD11	1.85	0.57
1:A:73:GLN:N	6:M:9:G:OP2	2.32	0.57
2:B:153:ARG:HB2	2:B:155:ASP:OD1	2.05	0.57
3:C:136:ARG:NH2	3:C:190:HIS:O	2.32	0.57
3:F:237:TYR:OH	3:G:302:ARG:NH1	2.38	0.56
6:M:11:G:O6	6:M:12:A:N6	2.38	0.56

Continued on next page...

Continued from previous page...

Atom-1	Atom-2	Interatomic distance (Å)	Clash overlap (Å)
3:F:108:LEU:H	3:F:135:GLN:HE21	1.51	0.56
1:A:32:PRO:HB3	1:A:174:PRO:HD2	1.86	0.56
3:H:198:LEU:HD21	3:H:314:LYS:HD2	1.87	0.56
3:F:37:ASN:HB3	3:F:171:HIS:HA	1.86	0.56
4:I:292:LYS:HB3	4:I:297:SER:HB2	1.87	0.56
3:E:54:PHE:HE1	3:E:146:VAL:HG23	1.70	0.56
3:F:52:HIS:ND1	3:F:147:SER:O	2.36	0.56
7:N:56:DC:H2''	7:N:57:DA:C8	2.41	0.56
3:E:55:VAL:HB	3:E:145:ALA:HB3	1.88	0.56
5:J:109:LYS:HD3	5:K:74:LEU:HA	1.88	0.56
3:C:77:ARG:NE	3:C:86:ASN:OD1	2.38	0.56
1:A:178:ASP:HB2	1:A:184:ASN:HB2	1.88	0.55
3:E:158:GLY:HA3	3:E:171:HIS:CE1	2.40	0.55
4:I:159:ALA:O	4:I:162:GLN:NE2	2.38	0.55
3:E:228:PHE:HB2	3:E:273:TRP:HB2	1.87	0.55
6:M:9:G:H1'	6:M:10:A:C8	2.42	0.55
3:D:42:GLN:O	3:D:54:PHE:N	2.34	0.55
2:B:142:LEU:HD22	2:B:195:GLN:HG3	1.87	0.55
3:C:207:LEU:HD23	3:C:221:PHE:HB3	1.88	0.55
3:G:29:LEU:HD12	3:G:55:VAL:HG21	1.89	0.55
3:G:159:ALA:HA	3:G:170:LEU:HA	1.89	0.55
7:N:23:DA:H4'	7:N:24:DC:OP1	2.05	0.55
3:D:194:PHE:HB3	3:D:317:LEU:HD13	1.87	0.55
3:E:299:TYR:HB2	3:E:305:MET:HB2	1.88	0.55
6:M:38:A:O2'	6:M:39:C:H4'	2.06	0.55
7:N:18:DT:H2''	7:N:19:DA:C8	2.40	0.55
3:E:137:MET:HB3	3:E:190:HIS:NE2	2.22	0.55
4:I:142:LYS:HB2	8:O:12:DA:P	2.47	0.55
4:I:152:PHE:HD2	4:I:203:LEU:HG	1.72	0.55
4:I:187:GLN:OE1	4:I:187:GLN:N	2.35	0.55
8:O:10:DG:H5'	8:O:11:DG:C6	2.27	0.55
3:E:148:LEU:HG	3:E:244:TYR:HD1	1.70	0.55
4:I:376:PHE:O	4:I:379:LEU:HB3	2.07	0.55
3:D:244:TYR:HE2	3:D:247:PRO:HG3	1.72	0.55
3:E:152:ASP:OD1	3:E:153:GLY:N	2.34	0.55
4:I:253:GLU:HG3	4:I:255:LYS:H	1.71	0.55
1:A:165:ARG:HH21	1:A:203:LEU:HA	1.71	0.54
3:H:136:ARG:HH21	3:H:192:LYS:HG2	1.72	0.54
4:I:24:VAL:HG11	4:I:233:ILE:HG22	1.89	0.54
4:I:43:SER:HA	4:I:46:ARG:HH21	1.72	0.54
5:K:71:ARG:NH2	7:N:27:DT:OP1	2.34	0.54

Continued on next page...

Continued from previous page...

Atom-1	Atom-2	Interatomic distance (Å)	Clash overlap (Å)
8:O:49:DT:H2''	8:O:50:DA:C8	2.42	0.54
3:F:28:SER:HB3	3:F:31:HIS:HE1	1.72	0.54
3:G:29:LEU:HD21	3:G:219:TYR:HB3	1.89	0.54
4:I:18:THR:HG22	4:I:198:TYR:HE1	1.71	0.54
5:K:110:PRO:HB3	5:L:79:ASN:O	2.08	0.54
1:A:51:ARG:HH22	1:A:114:PRO:HD2	1.72	0.54
3:C:83:GLU:HB2	3:C:85:ILE:HG22	1.89	0.54
1:A:42:SER:HA	6:M:1:U:C2	2.43	0.54
3:G:26:LEU:HD23	3:G:177:ALA:HB2	1.89	0.54
3:H:103:ILE:O	3:H:139:ALA:N	2.40	0.54
1:A:132:ARG:NH1	3:H:15:TYR:OH	2.40	0.54
2:B:116:TYR:HE2	2:B:213:ARG:HG3	1.72	0.54
3:G:80:ASP:OD2	3:G:87:ARG:NH2	2.40	0.54
3:H:225:SER:HA	3:H:276:GLY:HA3	1.88	0.54
4:I:270:TYR:HD2	4:I:310:ILE:HD12	1.72	0.54
2:B:135:VAL:HG23	2:B:197:ILE:HG21	1.90	0.54
3:H:31:HIS:HA	3:H:41:LEU:HA	1.89	0.54
2:B:119:LEU:HG	2:B:161:ARG:HB2	1.90	0.54
3:C:300:ARG:NH1	3:C:300:ARG:O	2.41	0.54
5:J:23:LYS:HD2	5:J:111:LYS:HG2	1.89	0.54
6:M:60:U:H2'	6:M:61:G:H8	1.72	0.54
3:F:186:ILE:HD12	3:F:200:MET:HE1	1.89	0.54
4:I:260:SER:HB3	4:I:341:VAL:HG21	1.90	0.54
4:I:401:ILE:HG22	4:I:473:ILE:HD11	1.90	0.54
2:B:184:LEU:O	2:B:185:ASN:HB3	2.08	0.53
3:C:53:SER:OG	3:C:176:HIS:ND1	2.29	0.53
3:C:184:PHE:HE2	3:C:186:ILE:HD11	1.73	0.53
2:B:48:ILE:HD12	2:B:75:ILE:HD13	1.89	0.53
3:D:226:LEU:N	3:D:275:GLY:O	2.37	0.53
3:F:193:ASP:HB3	3:F:196:ARG:HG3	1.90	0.53
3:H:158:GLY:O	3:H:171:HIS:NE2	2.41	0.53
4:I:328:ASN:HA	4:I:340:LYS:O	2.08	0.53
4:I:343:PRO:HD2	4:I:375:LEU:HB3	1.89	0.53
4:I:475:LEU:HD11	5:L:8:ASP:HB3	1.89	0.53
3:F:144:MET:HB2	3:G:26:LEU:HD13	1.91	0.53
5:L:34:GLU:OE1	5:L:34:GLU:N	2.33	0.53
4:I:344:ILE:HA	4:I:347:LEU:HD12	1.91	0.53
4:I:403:ILE:HD13	4:I:492:ALA:HB2	1.90	0.53
3:D:21:LEU:HD13	3:D:181:GLN:HB2	1.91	0.53
3:D:35:ARG:H	3:D:40:ILE:HD11	1.73	0.53
3:G:42:GLN:HE22	3:H:156:LYS:HD2	1.73	0.53

Continued on next page...

Continued from previous page...

Atom-1	Atom-2	Interatomic distance (Å)	Clash overlap (Å)
4:I:334:TYR:O	4:I:336:GLN:HG3	2.09	0.53
5:K:95:GLN:O	5:K:99:ILE:HG12	2.08	0.53
3:D:243:GLU:CD	3:D:255:SER:HA	2.29	0.53
3:E:245:CYS:O	3:E:246:ASP:C	2.46	0.53
3:F:151:TYR:HE1	3:F:154:ALA:HB3	1.73	0.53
4:I:172:THR:HG22	4:I:173:SER:H	1.73	0.53
5:L:61:PHE:HE2	5:L:97:ILE:HB	1.74	0.53
1:A:56:GLU:HG2	1:A:207:MET:HB2	1.90	0.53
3:D:21:LEU:CD1	3:D:181:GLN:HB2	2.39	0.53
3:G:62:TRP:CE3	6:M:14:G:C2	2.97	0.53
4:I:85:GLY:HA3	4:I:143:SER:HB2	1.91	0.53
4:I:359:TRP:HZ2	4:I:386:PHE:HB3	1.73	0.53
4:I:487:ILE:O	4:I:491:LEU:HG	2.09	0.53
3:F:153:GLY:HA3	5:L:56:TYR:HB2	1.90	0.53
5:L:71:ARG:NH2	7:N:33:DG:OP1	2.37	0.53
7:N:16:DT:H2''	7:N:17:DA:C8	2.44	0.53
3:F:28:SER:HB3	3:F:31:HIS:CE1	2.44	0.53
3:G:35:ARG:HG2	3:G:40:ILE:HD11	1.90	0.53
5:L:18:PHE:O	5:L:22:MET:HG3	2.08	0.53
4:I:117:ASN:ND2	8:O:9:DT:O3'	2.41	0.52
3:E:226:LEU:N	3:E:275:GLY:O	2.34	0.52
3:G:57:SER:HA	3:G:60:ILE:HD12	1.90	0.52
3:H:193:ASP:HB3	3:H:196:ARG:HG3	1.91	0.52
4:I:222:LYS:HD2	4:I:338:PHE:CZ	2.43	0.52
7:N:38:DC:H4'	7:N:39:DT:O5'	2.09	0.52
8:O:9:DT:H2''	8:O:10:DG:C8	2.43	0.52
1:A:184:ASN:HB3	1:A:211:PRO:HG3	1.91	0.52
3:F:55:VAL:HB	3:F:145:ALA:HB3	1.91	0.52
3:F:264:CYS:SG	3:F:266:GLN:HG2	2.50	0.52
4:I:195:LYS:HD2	4:I:198:TYR:HE2	1.74	0.52
7:N:35:DG:H2''	7:N:36:DG:C8	2.45	0.52
3:D:35:ARG:HG2	3:D:40:ILE:HD11	1.91	0.52
3:E:61:ARG:NH2	3:E:140:LEU:O	2.43	0.52
3:H:151:TYR:HA	3:H:176:HIS:NE2	2.25	0.52
4:I:172:THR:HB	4:I:174:TRP:CD1	2.44	0.52
3:C:150:PRO:HD2	3:C:247:PRO:HG3	1.91	0.52
3:H:61:ARG:NH2	3:H:140:LEU:O	2.43	0.52
3:H:102:ASP:O	3:H:136:ARG:NH1	2.42	0.52
5:L:92:SER:HB2	5:L:97:ILE:HD11	1.92	0.52
1:A:91:CYS:SG	1:A:92:TYR:N	2.83	0.52
3:C:261:GLU:OE2	3:D:302:ARG:NH2	2.43	0.52

Continued on next page...

Continued from previous page...

Atom-1	Atom-2	Interatomic distance (Å)	Clash overlap (Å)
3:G:266:GLN:OE1	3:H:302:ARG:NH1	2.43	0.52
3:H:38:LYS:HA	3:H:172:PHE:HB2	1.92	0.52
4:I:396:ASP:O	4:I:397:LYS:C	2.49	0.52
3:E:32:ASP:O	3:F:157:LEU:HD22	2.11	0.51
1:A:9:LEU:HD11	1:A:39:MET:HE1	1.92	0.51
1:A:189:ARG:NH1	4:I:15:ALA:O	2.43	0.51
3:C:16:LEU:HB2	3:C:230:TRP:HE3	1.74	0.51
3:D:238:ILE:HG13	3:D:238:ILE:O	2.09	0.51
3:H:227:VAL:HG22	3:H:274:ILE:HD12	1.92	0.51
4:I:6:GLN:OE1	4:I:6:GLN:N	2.32	0.51
4:I:348:ILE:O	4:I:352:LEU:HG	2.10	0.51
3:F:73:TYR:O	3:F:75:VAL:HG13	2.10	0.51
4:I:464:LYS:O	4:I:468:GLU:HG2	2.10	0.51
3:E:243:GLU:OE1	3:E:244:TYR:N	2.44	0.51
4:I:101:GLN:O	4:I:105:ILE:HG22	2.10	0.51
4:I:255:LYS:HA	4:I:339:ILE:HD13	1.92	0.51
6:M:3:G:H4'	6:M:4:C:O5'	2.10	0.51
6:M:60:U:H2'	6:M:61:G:C8	2.46	0.51
3:C:215:ASN:ND2	3:C:217:PHE:O	2.44	0.51
3:H:161:SER:H	6:M:14:G:H5''	1.75	0.51
2:B:144:ILE:HD11	2:B:191:THR:HB	1.90	0.51
3:E:30:ASN:N	3:E:30:ASN:OD1	2.44	0.51
3:E:106:PHE:CE2	3:E:136:ARG:HB2	2.46	0.51
3:E:161:SER:OG	3:E:162:GLY:N	2.43	0.51
3:H:205:MET:HG3	3:H:306:ILE:HG13	1.91	0.51
4:I:205:VAL:HG13	4:I:206:PRO:HD3	1.93	0.51
4:I:329:TYR:CD2	4:I:331:ILE:HG13	2.45	0.51
7:N:26:DT:H2''	7:N:27:DT:OP2	2.11	0.51
3:E:105:GLY:HA2	3:E:136:ARG:HG2	1.91	0.51
3:F:159:ALA:N	6:M:27:G:OP2	2.37	0.51
3:G:30:ASN:ND2	3:G:56:GLY:H	2.09	0.51
4:I:8:LYS:HB2	4:I:63:TRP:CH2	2.46	0.51
4:I:11:LEU:HB3	4:I:26:MET:SD	2.51	0.51
2:B:51:HIS:HA	2:B:207:ILE:HG21	1.93	0.51
3:C:21:LEU:HD21	3:C:252:ALA:HB1	1.93	0.51
3:D:299:TYR:HB2	3:D:305:MET:HB3	1.92	0.51
4:I:342:ASN:HB3	4:I:345:ARG:NE	2.26	0.51
4:I:352:LEU:HD21	4:I:358:TRP:HD1	1.76	0.51
4:I:348:ILE:HG12	4:I:362:PHE:HZ	1.75	0.51
8:O:2:DT:H2''	8:O:3:DA:C8	2.46	0.51
3:F:161:SER:N	6:M:26:G:OP1	2.44	0.50

Continued on next page...

Continued from previous page...

Atom-1	Atom-2	Interatomic distance (Å)	Clash overlap (Å)
4:I:312:LYS:O	4:I:316:ILE:HG12	2.10	0.50
7:N:52:DT:H2'	7:N:53:DC:C5	2.46	0.50
7:N:41:DA:H5'	7:N:41:DA:C8	2.46	0.50
8:O:7:DC:H2''	8:O:8:DA:C8	2.47	0.50
2:B:116:TYR:CE2	2:B:213:ARG:HG3	2.47	0.50
3:E:142:MET:HA	3:E:184:PHE:HA	1.92	0.50
4:I:344:ILE:HG13	4:I:366:LEU:HD21	1.94	0.50
3:H:170:LEU:HD11	7:N:49:DA:C5	2.46	0.50
4:I:350:ASP:O	4:I:354:LYS:HG3	2.12	0.50
3:C:275:GLY:HA3	3:C:305:MET:HE2	1.92	0.50
3:D:33:ILE:HG13	5:K:54:TYR:CZ	2.46	0.50
3:D:193:ASP:HB3	3:D:196:ARG:HG3	1.94	0.50
4:I:137:VAL:HG13	4:I:335:LYS:CA	2.33	0.50
1:A:8:TYR:HA	1:A:102:LEU:HD23	1.93	0.50
2:B:181:ILE:HG22	2:B:184:LEU:HD11	1.93	0.50
3:D:227:VAL:HG12	3:D:238:ILE:HD12	1.93	0.50
3:E:262:VAL:HG11	3:E:293:LEU:HG	1.92	0.50
3:F:143:ASN:HB3	3:F:240:TYR:OH	2.12	0.50
3:F:268:ASP:N	3:F:268:ASP:OD1	2.43	0.50
3:D:154:ALA:HB1	3:D:175:TYR:CZ	2.47	0.49
8:O:11:DG:H2'	8:O:12:DA:C8	2.46	0.49
2:B:126:GLN:OE1	2:B:175:ARG:NH2	2.40	0.49
3:F:108:LEU:HG	3:F:133:PRO:HG2	1.94	0.49
3:G:225:SER:HA	3:G:276:GLY:HA3	1.95	0.49
4:I:132:PHE:HE2	4:I:337:ILE:HD11	1.76	0.49
5:J:35:GLU:HG2	5:J:36:GLY:H	1.77	0.49
5:J:35:GLU:OE2	5:J:37:LYS:HG2	2.13	0.49
3:E:193:ASP:HB3	3:E:196:ARG:HG3	1.93	0.49
3:F:137:MET:HB3	3:F:190:HIS:NE2	2.27	0.49
4:I:27:THR:O	4:I:31:MET:HG3	2.11	0.49
4:I:195:LYS:HB2	4:I:198:TYR:HD2	1.78	0.49
3:G:32:ASP:HB3	3:G:42:GLN:HB2	1.95	0.49
5:K:110:PRO:HD3	5:L:79:ASN:ND2	2.25	0.49
3:D:17:TYR:HB3	3:D:183:TYR:HE2	1.77	0.49
3:H:157:LEU:HD12	3:H:158:GLY:H	1.77	0.49
4:I:108:GLY:O	4:I:112:VAL:HG12	2.12	0.49
4:I:281:TYR:CE2	4:I:315:LEU:HD12	2.47	0.49
4:I:373:GLU:HA	4:I:376:PHE:HB3	1.94	0.49
3:C:198:LEU:HD22	3:C:310:LYS:HE3	1.94	0.49
3:G:45:TYR:CD1	3:H:248:LYS:HD3	2.47	0.49
3:G:158:GLY:O	3:G:171:HIS:N	2.42	0.49

Continued on next page...

Continued from previous page...

Atom-1	Atom-2	Interatomic distance (Å)	Clash overlap (Å)
3:H:30:ASN:ND2	3:H:42:GLN:NE2	2.61	0.49
7:N:29:DA:H2''	7:N:30:DA:C8	2.47	0.49
3:E:246:ASP:O	3:E:247:PRO:C	2.51	0.49
4:I:20:ILE:O	4:I:24:VAL:HG13	2.13	0.49
4:I:342:ASN:HD22	4:I:343:PRO:HD2	1.76	0.49
5:K:23:LYS:HE3	5:K:111:LYS:HD3	1.94	0.49
3:F:109:LEU:HB3	7:N:47:DT:H5''	1.94	0.49
4:I:117:ASN:OD1	8:O:10:DG:H1'	2.13	0.49
4:I:366:LEU:O	4:I:376:PHE:HB2	2.13	0.49
1:A:60:ALA:HB2	1:A:162:TRP:CZ3	2.47	0.48
4:I:113:PHE:CE2	4:I:206:PRO:HG3	2.48	0.48
1:A:16:PHE:CE2	1:A:96:LEU:HD12	2.47	0.48
1:A:10:ASP:OD1	1:A:146:LYS:HE3	2.13	0.48
2:B:52:PRO:C	6:M:47:A:H61	2.17	0.48
3:C:235:ALA:HB2	3:D:206:ASN:HA	1.94	0.48
3:F:34:ARG:HD2	7:N:39:DT:H73	1.96	0.48
4:I:378:GLN:O	4:I:382:ASN:N	2.46	0.48
4:I:387:ILE:O	4:I:391:GLU:HG3	2.13	0.48
5:K:110:PRO:HA	5:L:79:ASN:HB3	1.96	0.48
1:A:191:ARG:NH2	1:A:193:GLU:OE1	2.43	0.48
3:C:58:SER:OG	6:M:39:C:OP1	2.31	0.48
3:H:31:HIS:H	3:H:41:LEU:HD23	1.77	0.48
3:H:244:TYR:HB2	3:H:252:ALA:HA	1.96	0.48
4:I:17:ASP:OD1	4:I:17:ASP:N	2.47	0.48
4:I:28:GLY:HA2	4:I:31:MET:HE2	1.94	0.48
3:E:92:ASP:OD1	3:E:92:ASP:N	2.46	0.48
3:F:151:TYR:HB2	3:F:176:HIS:CE1	2.49	0.48
4:I:373:GLU:HA	4:I:376:PHE:CB	2.44	0.48
4:I:428:PRO:HB2	4:I:431:LYS:HB3	1.95	0.48
5:J:104:ALA:HA	5:J:107:SER:HB2	1.95	0.48
7:N:22:DT:C2'	7:N:23:DA:H5'	2.43	0.48
3:F:299:TYR:HB2	3:F:305:MET:HB2	1.96	0.48
4:I:28:GLY:O	4:I:32:THR:HG22	2.13	0.48
5:L:75:ASN:O	5:L:79:ASN:N	2.46	0.48
4:I:314:ILE:HD12	4:I:352:LEU:HB3	1.95	0.48
4:I:331:ILE:HB	4:I:338:PHE:HB2	1.96	0.48
4:I:405:VAL:HA	4:I:463:ASN:HD21	1.78	0.48
5:J:7:GLU:OE1	5:J:7:GLU:N	2.36	0.48
5:J:79:ASN:HA	5:J:82:GLN:HE21	1.78	0.48
4:I:324:TYR:HE2	4:I:388:ILE:HG21	1.78	0.48
1:A:121:GLN:NE2	1:A:125:ASP:OD1	2.45	0.47

Continued on next page...

Continued from previous page...

Atom-1	Atom-2	Interatomic distance (Å)	Clash overlap (Å)
3:D:187:ASP:OD2	3:D:190:HIS:HB2	2.14	0.47
3:E:58:SER:OG	6:M:27:G:OP1	2.31	0.47
3:D:31:HIS:HA	3:D:40:ILE:O	2.14	0.47
3:E:77:ARG:NH2	6:M:26:G:OP2	2.47	0.47
3:F:29:LEU:HD12	3:F:55:VAL:HG21	1.96	0.47
5:L:61:PHE:CE2	5:L:97:ILE:HB	2.49	0.47
2:B:14:LEU:N	2:B:73:ILE:O	2.43	0.47
4:I:342:ASN:HB3	4:I:345:ARG:CD	2.44	0.47
7:N:59:DG:H2'	7:N:60:DA:C8	2.49	0.47
1:A:18:GLU:OE1	1:A:26:LYS:HG2	2.15	0.47
2:B:23:ILE:HD12	2:B:24:PRO:HD2	1.96	0.47
3:C:32:ASP:OD1	3:C:32:ASP:N	2.47	0.47
3:E:54:PHE:CE1	3:E:146:VAL:HG23	2.48	0.47
4:I:344:ILE:HD11	4:I:366:LEU:HG	1.97	0.47
4:I:376:PHE:CE1	4:I:379:LEU:HD13	2.49	0.47
1:A:84:HIS:ND1	1:A:85:PRO:HD2	2.29	0.47
4:I:343:PRO:O	4:I:347:LEU:HG	2.13	0.47
2:B:116:TYR:OH	2:B:217:GLU:HG3	2.15	0.47
2:B:200:LYS:HD3	6:M:62:C:OP2	2.14	0.47
3:D:276:GLY:HA2	3:D:302:ARG:HH11	1.79	0.47
3:E:149:THR:HG23	3:E:247:PRO:O	2.15	0.47
3:G:49:GLY:HA2	3:H:248:LYS:HB2	1.95	0.47
3:H:19:THR:OG1	3:H:239:SER:O	2.33	0.47
4:I:29:LEU:HD21	4:I:200:LEU:HD23	1.97	0.47
4:I:359:TRP:HE1	4:I:389:MET:HB2	1.79	0.47
5:J:110:PRO:HG3	5:K:82:GLN:OE1	2.13	0.47
3:D:31:HIS:O	6:M:33:G:H2'	2.15	0.47
3:D:136:ARG:HG2	3:D:137:MET:H	1.78	0.47
3:G:215:ASN:ND2	6:M:18:U:OP2	2.40	0.47
3:G:259:ILE:O	3:G:263:GLU:HG2	2.15	0.47
4:I:147:TYR:CD1	4:I:149:HIS:HB2	2.50	0.47
4:I:270:TYR:CD2	4:I:310:ILE:HD12	2.50	0.47
5:K:13:ILE:HD12	5:K:81:HIS:ND1	2.29	0.47
5:L:76:LYS:HA	5:L:79:ASN:OD1	2.15	0.47
3:C:279:VAL:HG13	3:C:298:ILE:HD11	1.95	0.47
4:I:137:VAL:CG1	4:I:335:LYS:HA	2.35	0.47
2:B:163:LEU:HB3	2:B:174:VAL:HG23	1.97	0.47
3:F:108:LEU:H	3:F:135:GLN:NE2	2.13	0.47
3:G:20:VAL:HG11	3:G:182:TYR:CZ	2.50	0.47
3:G:56:GLY:HA2	3:G:144:MET:SD	2.54	0.47
7:N:50:DC:H4'	7:N:51:DT:O5'	2.14	0.47

Continued on next page...

Continued from previous page...

Atom-1	Atom-2	Interatomic distance (Å)	Clash overlap (Å)
3:C:225:SER:HA	3:C:276:GLY:HA3	1.96	0.46
3:D:16:LEU:HB2	3:D:230:TRP:HE3	1.79	0.46
3:E:105:GLY:HA2	3:E:136:ARG:HB3	1.96	0.46
5:J:25:ASN:O	5:J:29:ILE:HG22	2.15	0.46
5:J:59:LEU:HD22	5:J:59:LEU:H	1.80	0.46
7:N:51:DT:H6	7:N:51:DT:H2'	1.61	0.46
3:D:95:PRO:O	3:D:102:ASP:HB2	2.14	0.46
3:F:266:GLN:OE1	3:G:302:ARG:NH1	2.48	0.46
3:G:91:GLU:OE1	3:G:91:GLU:N	2.38	0.46
2:B:27:ASN:O	2:B:31:THR:HG22	2.16	0.46
3:D:245:CYS:CB	3:D:251:GLU:HG2	2.45	0.46
3:E:279:VAL:O	3:E:283:GLN:HG2	2.15	0.46
3:F:236:SER:O	3:F:236:SER:OG	2.29	0.46
3:H:34:ARG:HD2	3:H:36:GLY:H	1.81	0.46
3:G:254:LEU:HD13	3:G:278:ILE:HG12	1.97	0.46
4:I:350:ASP:HB3	4:I:354:LYS:HE3	1.96	0.46
4:I:373:GLU:HG2	4:I:376:PHE:CD2	2.47	0.46
3:F:259:ILE:H	3:F:259:ILE:HG12	1.45	0.46
3:G:40:ILE:HD12	3:G:40:ILE:H	1.80	0.46
4:I:262:LEU:HD12	4:I:262:LEU:H	1.80	0.46
5:J:22:MET:HE1	5:J:105:ILE:HD13	1.97	0.46
5:J:109:LYS:H	5:J:109:LYS:HG3	1.50	0.46
1:A:22:ARG:HD2	4:I:192:LEU:HD21	1.97	0.46
3:C:194:PHE:O	3:C:197:ILE:HG22	2.16	0.46
3:F:225:SER:HA	3:F:276:GLY:HA3	1.98	0.46
3:G:198:LEU:HD13	3:G:310:LYS:HG2	1.96	0.46
3:G:264:CYS:SG	3:G:266:GLN:HG2	2.55	0.46
3:H:161:SER:N	6:M:14:G:OP1	2.48	0.46
4:I:116:LEU:HD11	7:N:57:DA:N3	2.29	0.46
1:A:108:ASP:OD1	1:A:109:GLU:N	2.49	0.46
3:C:70:LYS:HD2	3:C:70:LYS:HA	1.75	0.46
3:C:145:ALA:HB1	3:C:180:TYR:HB3	1.97	0.46
3:F:75:VAL:HB	3:F:100:ASP:HB2	1.98	0.46
3:F:266:GLN:HG3	3:F:267:ILE:HG13	1.97	0.46
3:D:160:LYS:HB2	3:D:160:LYS:HE3	1.38	0.46
3:F:237:TYR:O	3:F:238:ILE:HG13	2.16	0.46
3:G:198:LEU:HB2	3:G:199:PRO:HD3	1.98	0.46
3:H:238:ILE:HG22	3:H:258:PHE:HE1	1.81	0.46
4:I:87:ILE:HD12	4:I:87:ILE:HA	1.80	0.46
5:J:5:SER:HB2	5:J:8:ASP:OD1	2.16	0.46
5:J:67:ASP:O	5:J:71:ARG:HG2	2.15	0.46

Continued on next page...

Continued from previous page...

Atom-1	Atom-2	Interatomic distance (Å)	Clash overlap (Å)
2:B:16:PHE:CE2	2:B:104:PRO:HB3	2.51	0.46
3:C:16:LEU:HB2	3:C:230:TRP:CE3	2.51	0.46
3:E:157:LEU:HD12	3:E:158:GLY:H	1.80	0.46
5:K:33:THR:HG21	5:K:39:PRO:HG3	1.98	0.46
7:N:41:DA:H5'	7:N:41:DA:H8	1.81	0.46
7:N:45:DA:H2''	7:N:46:DA:H5''	1.97	0.46
3:D:109:LEU:HD22	7:N:35:DG:C4	2.50	0.46
3:F:54:PHE:CE1	3:F:146:VAL:HG12	2.51	0.46
3:F:135:GLN:O	6:M:17:A:O2'	2.34	0.46
3:H:149:THR:HG21	3:H:248:LYS:H	1.80	0.46
5:J:95:GLN:O	5:J:99:ILE:HG13	2.16	0.46
4:I:328:ASN:HB3	4:I:339:ILE:HG22	1.99	0.45
3:C:75:VAL:HG22	3:C:100:ASP:HB2	1.97	0.45
3:F:33:ILE:O	3:F:34:ARG:HG3	2.16	0.45
4:I:347:LEU:HD13	4:I:365:LYS:HG3	1.97	0.45
4:I:363:TRP:CZ3	4:I:367:VAL:HG21	2.51	0.45
5:J:61:PHE:HA	5:J:64:TYR:HB3	1.98	0.45
3:F:179:ARG:NH2	3:F:224:ASP:OD2	2.49	0.45
3:F:258:PHE:HD2	3:F:259:ILE:HD13	1.82	0.45
3:G:15:TYR:HB2	3:G:17:TYR:CE2	2.51	0.45
4:I:100:ARG:HD2	4:I:132:PHE:CZ	2.52	0.45
4:I:278:GLU:HG2	4:I:279:VAL:HG23	1.97	0.45
4:I:343:PRO:HB2	4:I:375:LEU:HD13	1.97	0.45
4:I:379:LEU:C	4:I:379:LEU:HD23	2.36	0.45
3:C:244:TYR:HE2	3:C:251:GLU:H	1.62	0.45
3:C:266:GLN:HE22	3:D:302:ARG:HE	1.63	0.45
3:D:211:GLY:HA3	6:M:32:U:H6	1.81	0.45
3:C:19:THR:OG1	3:C:239:SER:O	2.35	0.45
3:E:178:THR:OG1	3:E:179:ARG:N	2.49	0.45
3:F:280:LYS:HE2	3:F:300:ARG:HE	1.82	0.45
3:H:28:SER:HB3	3:H:31:HIS:NE2	2.31	0.45
5:L:75:ASN:HB3	5:L:78:PHE:HB3	1.99	0.45
7:N:38:DC:H2''	7:N:39:DT:OP2	2.17	0.45
5:J:60:SER:O	5:J:61:PHE:HB3	2.16	0.45
1:A:61:MET:HE1	1:A:65:PRO:HD3	1.99	0.45
2:B:121:ILE:HD11	2:B:200:LYS:HG3	1.98	0.45
3:E:37:ASN:HB3	3:E:171:HIS:HA	1.99	0.45
3:F:148:LEU:HG	3:F:244:TYR:HD1	1.80	0.45
3:G:100:ASP:OD1	3:G:100:ASP:N	2.48	0.45
3:H:57:SER:O	3:H:61:ARG:HG3	2.17	0.45
4:I:255:LYS:HB2	4:I:330:GLN:OE1	2.17	0.45

Continued on next page...

Continued from previous page...

Atom-1	Atom-2	Interatomic distance (Å)	Clash overlap (Å)
4:I:276:GLN:NE2	4:I:278:GLU:OE2	2.34	0.45
2:B:57:PRO:HA	2:B:63:LEU:HA	1.97	0.45
3:C:275:GLY:HA2	3:C:279:VAL:HG21	1.98	0.45
3:D:200:MET:HE3	3:D:200:MET:HB3	1.80	0.45
4:I:74:LEU:O	4:I:78:SER:OG	2.25	0.45
5:K:54:TYR:CZ	5:K:56:TYR:HE1	2.34	0.45
1:A:7:LEU:HD13	1:A:148:ILE:HD11	1.99	0.45
1:A:169:GLY:N	1:A:189:ARG:HD3	2.32	0.45
3:F:152:ASP:OD1	3:F:152:ASP:N	2.43	0.45
4:I:61:LEU:HB3	4:I:63:TRP:HZ3	1.81	0.45
4:I:97:ILE:HG23	4:I:101:GLN:HB2	1.98	0.45
5:J:79:ASN:HA	5:J:82:GLN:NE2	2.32	0.45
5:K:76:LYS:O	5:K:80:GLU:HG2	2.17	0.45
3:E:46:TRP:CE2	3:E:146:VAL:HG21	2.52	0.45
3:E:248:LYS:H	3:E:248:LYS:HG2	1.66	0.45
4:I:449:PHE:CE2	4:I:485:ILE:HB	2.52	0.45
3:E:90:SER:OG	3:E:92:ASP:OD1	2.34	0.44
3:H:148:LEU:HD21	3:H:244:TYR:HB3	1.98	0.44
5:J:23:LYS:HB2	5:J:108:TYR:HE1	1.82	0.44
3:C:15:TYR:HH	3:C:234:PHE:HE2	1.63	0.44
3:E:228:PHE:O	3:E:273:TRP:N	2.45	0.44
4:I:497:LYS:HA	4:I:497:LYS:HD2	1.83	0.44
5:J:93:PRO:O	5:J:97:ILE:HD12	2.16	0.44
5:K:101:SER:O	5:K:105:ILE:HG12	2.17	0.44
6:M:29:C:N4	6:M:30:A:H62	2.15	0.44
3:D:178:THR:OG1	3:D:179:ARG:N	2.50	0.44
3:F:139:ALA:O	3:F:186:ILE:HG13	2.17	0.44
3:F:151:TYR:CE1	3:F:154:ALA:HB3	2.50	0.44
3:H:274:ILE:HB	3:H:298:ILE:HG12	1.98	0.44
4:I:228:ARG:HG2	4:I:291:GLU:HB2	1.99	0.44
4:I:390:ALA:HB1	4:I:396:ASP:OD2	2.17	0.44
5:K:109:LYS:N	5:K:110:PRO:HD2	2.33	0.44
3:C:41:LEU:N	3:C:174:GLU:OE1	2.41	0.44
3:D:151:TYR:HB2	3:D:176:HIS:CD2	2.52	0.44
3:F:228:PHE:O	3:F:273:TRP:N	2.48	0.44
3:F:255:SER:OG	3:F:258:PHE:HB3	2.17	0.44
3:G:277:THR:HA	3:G:300:ARG:NH1	2.33	0.44
4:I:328:ASN:OD1	4:I:341:VAL:HA	2.18	0.44
3:C:79:TRP:HE3	3:C:86:ASN:ND2	2.16	0.44
3:D:160:LYS:O	3:D:161:SER:C	2.54	0.44
3:D:273:TRP:CD1	3:D:309:LEU:HD13	2.51	0.44

Continued on next page...

Continued from previous page...

Atom-1	Atom-2	Interatomic distance (Å)	Clash overlap (Å)
1:A:1:MET:HE2	1:A:2:ILE:O	2.18	0.44
2:B:132:ILE:O	2:B:135:VAL:HG12	2.16	0.44
2:B:171:GLN:HE21	2:B:171:GLN:HB3	1.62	0.44
3:D:238:ILE:HG22	3:D:258:PHE:HE1	1.83	0.44
3:F:57:SER:O	3:F:61:ARG:HG3	2.17	0.44
3:D:61:ARG:HD3	6:M:31:C:OP1	2.17	0.44
3:E:33:ILE:HD12	3:E:33:ILE:HA	1.87	0.44
3:E:170:LEU:HD22	7:N:31:DC:C2	2.53	0.44
3:F:272:LEU:HD12	3:F:272:LEU:HA	1.88	0.44
3:G:188:ALA:HB1	3:G:317:LEU:HD11	1.99	0.44
3:G:189:THR:HA	3:G:194:PHE:HE2	1.83	0.44
1:A:189:ARG:HH21	4:I:23:ARG:CZ	2.31	0.44
3:D:37:ASN:OD1	7:N:27:DT:H5''	2.18	0.44
3:C:61:ARG:NH2	3:C:140:LEU:O	2.51	0.44
3:C:187:ASP:OD2	3:C:190:HIS:HB2	2.17	0.44
3:E:64:LEU:HD23	3:E:64:LEU:HA	1.86	0.44
3:E:151:TYR:HB2	3:E:176:HIS:CE1	2.52	0.44
3:E:157:LEU:HD13	3:E:172:PHE:CE2	2.53	0.44
3:F:35:ARG:HH22	4:I:442:TYR:HE2	1.66	0.44
3:F:109:LEU:HD21	6:M:17:A:C2	2.53	0.44
4:I:30:TYR:CD2	4:I:239:PHE:HB3	2.53	0.44
4:I:320:GLN:HE21	4:I:324:TYR:HE2	1.66	0.44
3:D:211:GLY:HA3	6:M:32:U:C6	2.53	0.43
3:E:64:LEU:HB3	3:E:104:PHE:HZ	1.83	0.43
3:F:136:ARG:HD2	3:F:136:ARG:HA	1.65	0.43
3:G:58:SER:OG	6:M:15:U:OP1	2.34	0.43
1:A:140:GLU:OE1	1:A:141:SER:N	2.51	0.43
1:A:153:GLU:HB3	1:A:198:LEU:HB3	2.01	0.43
3:D:34:ARG:HG3	7:N:27:DT:H72	2.00	0.43
3:E:254:LEU:HD12	3:E:254:LEU:HA	1.84	0.43
3:F:135:GLN:HB3	6:M:17:A:O2'	2.18	0.43
3:F:244:TYR:CE2	3:F:246:ASP:HB2	2.53	0.43
3:G:168:THR:O	3:G:168:THR:OG1	2.35	0.43
3:H:77:ARG:HD3	3:H:86:ASN:HB3	2.00	0.43
4:I:289:LEU:HD23	4:I:304:SER:HB3	1.98	0.43
2:B:133:GLU:HG2	2:B:137:ARG:HH12	1.82	0.43
2:B:211:ALA:O	2:B:215:LYS:NZ	2.47	0.43
3:E:145:ALA:HA	3:E:182:TYR:HB3	2.00	0.43
3:F:165:LYS:HE2	7:N:36:DG:H21	1.83	0.43
3:H:100:ASP:OD1	3:H:101:ASP:N	2.51	0.43
4:I:433:VAL:O	4:I:437:ARG:HG2	2.18	0.43

Continued on next page...

Continued from previous page...

Atom-1	Atom-2	Interatomic distance (Å)	Clash overlap (Å)
7:N:50:DC:H6	7:N:50:DC:H2'	1.67	0.43
1:A:27:THR:HG22	1:A:94:GLU:HB2	2.00	0.43
3:C:211:GLY:O	6:M:38:A:C2	2.71	0.43
3:D:268:ASP:OD2	3:D:270:SER:OG	2.35	0.43
3:E:244:TYR:HE2	3:E:249:SER:HB2	1.83	0.43
3:F:144:MET:HE3	3:F:144:MET:HB3	1.86	0.43
3:F:160:LYS:HB2	3:F:160:LYS:HE2	1.71	0.43
3:F:266:GLN:HE22	3:G:302:ARG:NH2	2.15	0.43
3:G:216:ILE:HG13	3:G:217:PHE:CD2	2.53	0.43
3:H:28:SER:HA	3:H:41:LEU:HD11	2.01	0.43
3:H:52:HIS:ND1	3:H:147:SER:O	2.44	0.43
7:N:63:DT:H2''	7:N:64:DA:C8	2.53	0.43
3:D:239:SER:H	3:E:23:ARG:NH1	2.16	0.43
3:G:260:ASP:CG	3:H:300:ARG:HH12	2.22	0.43
3:H:159:ALA:HA	3:H:170:LEU:H	1.84	0.43
3:H:268:ASP:OD2	3:H:270:SER:OG	2.34	0.43
4:I:342:ASN:HD22	4:I:343:PRO:CD	2.31	0.43
5:J:35:GLU:CG	5:J:36:GLY:H	2.31	0.43
6:M:59:A:H3'	6:M:60:U:O2	2.19	0.43
7:N:46:DA:N7	7:N:47:DT:H73	2.34	0.43
1:A:181:GLY:O	6:M:3:G:N1	2.42	0.43
3:D:83:GLU:HB2	3:D:85:ILE:HG22	2.00	0.43
4:I:249:LEU:HD13	4:I:249:LEU:HA	1.89	0.43
4:I:277:PRO:HD2	4:I:278:GLU:OE1	2.18	0.43
4:I:343:PRO:HG2	4:I:375:LEU:HB3	1.99	0.43
4:I:359:TRP:CD2	4:I:362:PHE:HD2	2.37	0.43
7:N:26:DT:H4'	7:N:27:DT:O5'	2.18	0.43
3:C:183:TYR:CD1	3:C:239:SER:HA	2.54	0.43
4:I:63:TRP:HE1	4:I:67:ASP:HA	1.82	0.43
4:I:63:TRP:NE1	4:I:67:ASP:OD1	2.51	0.43
4:I:383:ARG:O	4:I:387:ILE:HG13	2.18	0.43
5:K:5:SER:O	5:K:8:ASP:N	2.50	0.43
1:A:37:TYR:CD2	1:A:208:VAL:HG11	2.54	0.43
3:E:54:PHE:HB3	3:E:144:MET:HE3	2.01	0.43
5:L:80:GLU:HB2	5:L:81:HIS:CE1	2.54	0.43
3:C:60:ILE:HG23	3:C:207:LEU:HD21	2.01	0.43
3:D:167:SER:HA	7:N:26:DT:OP1	2.19	0.43
3:E:243:GLU:OE1	3:E:245:CYS:N	2.51	0.43
3:G:160:LYS:HB2	3:G:160:LYS:HE3	1.82	0.43
3:H:262:VAL:HG11	3:H:293:LEU:HD13	2.00	0.43
5:J:59:LEU:O	5:J:63:GLU:HG3	2.19	0.43

Continued on next page...

Continued from previous page...

Atom-1	Atom-2	Interatomic distance (Å)	Clash overlap (Å)
5:J:102:LEU:HB3	5:K:66:SER:HB2	2.00	0.43
2:B:184:LEU:O	2:B:188:ASP:HB2	2.19	0.43
3:C:68:LEU:O	3:C:73:TYR:HB2	2.19	0.43
3:D:165:LYS:HE3	6:M:40:G:N2	2.24	0.43
3:E:30:ASN:HD22	3:E:54:PHE:C	2.20	0.43
3:G:61:ARG:NH2	3:G:140:LEU:O	2.52	0.43
3:G:209:LYS:HZ1	3:G:212:GLY:H	1.65	0.43
3:H:85:ILE:HD12	3:H:85:ILE:HA	1.82	0.43
4:I:202:LEU:O	4:I:205:VAL:HG12	2.19	0.43
5:L:55:CYS:O	5:L:98:ARG:NH1	2.46	0.43
4:I:326:LYS:HB2	4:I:378:GLN:OE1	2.19	0.42
5:K:23:LYS:HD2	5:K:111:LYS:NZ	2.34	0.42
5:K:93:PRO:HD2	5:K:96:GLU:OE1	2.19	0.42
7:N:63:DT:H2"	7:N:64:DA:N7	2.34	0.42
2:B:45:LEU:HD22	2:B:83:ILE:HD11	2.01	0.42
2:B:212:THR:O	2:B:216:GLU:HG3	2.19	0.42
3:E:134:ASN:ND2	3:E:135:GLN:HG2	2.34	0.42
3:F:65:ARG:HE	3:F:100:ASP:CG	2.22	0.42
3:F:205:MET:HG3	3:F:306:ILE:HG13	2.01	0.42
3:G:109:LEU:HD22	7:N:53:DC:C2	2.54	0.42
3:G:272:LEU:HD12	3:G:272:LEU:HA	1.76	0.42
3:H:104:PHE:O	6:M:6:C:H5"	2.19	0.42
4:I:333:LYS:O	4:I:335:LYS:N	2.52	0.42
6:M:24:A:H61	7:N:41:DA:N6	2.17	0.42
8:O:50:DA:H2'	8:O:51:DT:H71	2.02	0.42
1:A:201:PRO:O	1:A:202:ASP:C	2.58	0.42
3:F:306:ILE:HD13	3:F:306:ILE:HA	1.84	0.42
3:G:40:ILE:HD12	3:G:40:ILE:N	2.34	0.42
3:D:156:LYS:N	3:D:173:THR:O	2.28	0.42
3:E:57:SER:H	3:E:144:MET:HG2	1.84	0.42
3:F:263:GLU:OE1	3:F:292:PRO:HD2	2.20	0.42
3:G:228:PHE:HB2	3:G:273:TRP:HB2	2.00	0.42
4:I:225:LYS:HE2	4:I:225:LYS:HB2	1.87	0.42
3:G:55:VAL:HB	3:G:145:ALA:HB3	2.01	0.42
3:H:280:LYS:O	3:H:284:GLN:HG2	2.19	0.42
4:I:18:THR:HG22	4:I:198:TYR:CE1	2.51	0.42
4:I:395:GLU:H	4:I:395:GLU:CD	2.21	0.42
4:I:443:CYS:O	4:I:486:ARG:NH1	2.52	0.42
4:I:459:ARG:HH21	5:L:49:ARG:HH21	1.67	0.42
3:D:46:TRP:CG	3:D:47:ASN:N	2.86	0.42
3:D:152:ASP:OD1	3:D:153:GLY:N	2.46	0.42

Continued on next page...

Continued from previous page...

Atom-1	Atom-2	Interatomic distance (Å)	Clash overlap (Å)
3:E:279:VAL:HG13	3:E:298:ILE:HD11	2.01	0.42
3:F:186:ILE:HD12	3:F:200:MET:CE	2.48	0.42
4:I:175:LEU:HG	4:I:202:LEU:HB3	2.01	0.42
4:I:340:LYS:HG3	4:I:374:TYR:CE1	2.55	0.42
2:B:86:TYR:C	2:B:87:LEU:HD22	2.40	0.42
3:C:286:ASP:OD1	3:C:286:ASP:N	2.53	0.42
3:E:148:LEU:HD12	3:E:148:LEU:HA	1.90	0.42
3:F:245:CYS:HB3	3:F:246:ASP:H	1.69	0.42
4:I:42:LEU:HB2	4:I:45:GLN:HG3	2.01	0.42
4:I:115:ARG:HG3	4:I:299:GLN:HB2	2.00	0.42
3:D:40:ILE:HD12	3:D:40:ILE:N	2.34	0.42
4:I:221:LEU:HD21	4:I:339:ILE:H	1.83	0.42
3:C:200:MET:HE3	3:C:200:MET:HB3	1.91	0.42
3:E:107:ALA:HA	3:E:135:GLN:HE22	1.85	0.42
4:I:344:ILE:HG13	4:I:386:PHE:CZ	2.45	0.42
2:B:194:GLU:OE1	2:B:195:GLN:N	2.52	0.42
4:I:160:ASP:N	4:I:160:ASP:OD1	2.53	0.42
4:I:169:ILE:HD11	4:I:196:PRO:HG3	2.02	0.42
5:K:19:GLN:NE2	5:K:107:SER:O	2.53	0.42
2:B:94:ILE:HD12	2:B:99:TYR:CE2	2.55	0.41
3:C:21:LEU:HD11	3:C:179:ARG:HB2	2.03	0.41
3:C:38:LYS:HE2	3:C:40:ILE:HG22	2.01	0.41
3:D:192:LYS:HA	3:D:192:LYS:HD3	1.82	0.41
3:G:193:ASP:HB3	3:G:196:ARG:HG3	2.02	0.41
5:L:6:GLU:O	5:L:10:GLN:HG2	2.19	0.41
6:M:12:A:H2'	6:M:13:A:C8	2.55	0.41
2:B:17:LYS:HB2	2:B:102:ASP:CG	2.41	0.41
2:B:29:TYR:CD1	2:B:165:ILE:HG13	2.55	0.41
3:C:73:TYR:O	3:C:75:VAL:HG23	2.20	0.41
3:E:66:PHE:O	3:E:70:LYS:HG2	2.20	0.41
3:E:143:ASN:HD21	3:F:26:LEU:HB2	1.84	0.41
3:H:27:ALA:HB2	3:H:219:TYR:CD1	2.55	0.41
3:E:57:SER:HB2	3:E:142:MET:HG3	2.02	0.41
3:G:286:ASP:N	3:G:286:ASP:OD1	2.54	0.41
4:I:331:ILE:HD12	4:I:331:ILE:H	1.85	0.41
8:O:11:DG:H2''	8:O:12:DA:H5'	2.01	0.41
1:A:17:ARG:NE	1:A:21:ALA:O	2.53	0.41
1:A:92:TYR:CE2	3:H:33:ILE:HD12	2.56	0.41
1:A:155:TYR:HD1	1:A:156:LEU:HD23	1.85	0.41
2:B:58:THR:N	2:B:62:LEU:O	2.49	0.41
3:D:245:CYS:HB2	3:D:251:GLU:HG2	2.02	0.41

Continued on next page...

Continued from previous page...

Atom-1	Atom-2	Interatomic distance (Å)	Clash overlap (Å)
3:F:109:LEU:HD22	7:N:47:DT:C2	2.56	0.41
3:F:269:PRO:HB3	3:F:296:ALA:HB2	2.02	0.41
4:I:100:ARG:HH22	4:I:254:THR:HB	1.86	0.41
3:C:273:TRP:HB3	3:C:305:MET:SD	2.60	0.41
3:E:192:LYS:HD3	3:E:192:LYS:HA	1.90	0.41
4:I:325:PHE:HA	4:I:382:ASN:CG	2.40	0.41
4:I:471:GLU:OE2	4:I:471:GLU:N	2.42	0.41
5:L:66:SER:O	5:L:70:VAL:HG12	2.20	0.41
7:N:46:DA:C8	7:N:47:DT:H73	2.55	0.41
3:C:85:ILE:HD13	3:D:164:GLU:OE1	2.21	0.41
3:C:163:ARG:H	3:C:163:ARG:HG3	1.67	0.41
3:F:65:ARG:HH12	6:M:19:U:H5 ⁷	1.86	0.41
3:G:45:TYR:CG	3:H:248:LYS:HD3	2.56	0.41
3:H:170:LEU:HD11	7:N:49:DA:C4	2.56	0.41
3:C:205:MET:HE2	3:C:205:MET:HA	2.02	0.41
3:G:109:LEU:HD11	6:M:12:A:C2	2.56	0.41
3:H:55:VAL:HG11	3:H:210:VAL:HG11	2.03	0.41
4:I:407:GLN:HA	4:I:410:MET:HG2	2.02	0.41
2:B:135:VAL:HG13	2:B:148:ILE:HG12	2.03	0.41
3:C:186:ILE:HG21	3:C:197:ILE:HD13	2.02	0.41
3:D:251:GLU:O	3:D:252:ALA:HB3	2.21	0.41
3:D:272:LEU:HD12	3:D:272:LEU:HA	1.96	0.41
3:E:134:ASN:H	3:E:134:ASN:ND2	2.17	0.41
3:F:253:LYS:HB3	3:F:253:LYS:HE3	1.85	0.41
3:H:20:VAL:HG23	3:H:223:PRO:HB3	2.01	0.41
1:A:8:TYR:O	1:A:148:ILE:HA	2.21	0.41
2:B:17:LYS:NZ	2:B:70:ARG:HH22	2.19	0.41
2:B:49:GLY:O	2:B:74:ARG:N	2.41	0.41
2:B:173:LYS:O	2:B:175:ARG:NH1	2.54	0.41
3:C:50:LYS:HE3	3:C:50:LYS:HB2	1.82	0.41
3:C:54:PHE:CE1	3:C:146:VAL:HG22	2.55	0.41
3:C:231:THR:OG1	3:C:232:ASN:N	2.54	0.41
3:C:237:TYR:OH	3:D:302:ARG:NE	2.51	0.41
3:D:224:ASP:O	3:D:277:THR:HG22	2.20	0.41
3:E:30:ASN:O	3:E:42:GLN:N	2.53	0.41
3:E:198:LEU:HB2	3:E:199:PRO:HD3	2.02	0.41
3:F:190:HIS:O	3:F:190:HIS:ND1	2.54	0.41
3:F:235:ALA:HA	3:G:222:CYS:SG	2.61	0.41
3:G:16:LEU:HB3	3:G:186:ILE:HG12	2.03	0.41
3:H:209:LYS:HD2	3:H:214:SER:OG	2.21	0.41
3:H:257:GLU:OE1	3:H:257:GLU:N	2.53	0.41

Continued on next page...

Continued from previous page...

Atom-1	Atom-2	Interatomic distance (Å)	Clash overlap (Å)
3:H:286:ASP:OD1	3:H:286:ASP:N	2.54	0.41
5:J:31:ALA:HB1	7:N:20:DT:C4	2.56	0.41
7:N:22:DT:H1'	7:N:23:DA:H5'	2.03	0.41
1:A:76:ARG:NH1	1:A:78:LYS:HD2	2.36	0.41
2:B:14:LEU:HA	2:B:14:LEU:HD12	1.81	0.41
3:C:264:CYS:SG	3:D:300:ARG:HG3	2.61	0.41
3:D:70:LYS:HA	3:D:70:LYS:HD2	1.90	0.41
4:I:96:ARG:NH1	4:I:250:GLN:HE21	2.19	0.41
4:I:120:TYR:HA	4:I:147:TYR:HA	2.02	0.41
5:J:23:LYS:HB2	5:J:108:TYR:CE1	2.56	0.41
3:D:154:ALA:HB1	3:D:175:TYR:CE2	2.56	0.40
3:G:209:LYS:NZ	3:G:212:GLY:H	2.19	0.40
4:I:175:LEU:HG	4:I:202:LEU:CB	2.52	0.40
5:K:52:LEU:HA	5:K:52:LEU:HD23	1.84	0.40
3:C:227:VAL:HG12	3:C:238:ILE:HD12	2.01	0.40
3:D:157:LEU:HD23	3:D:157:LEU:HA	1.85	0.40
3:H:306:ILE:HD13	3:H:306:ILE:HA	1.83	0.40
4:I:138:GLU:HB3	4:I:335:LYS:HD3	2.02	0.40
5:J:91:LYS:HG3	5:J:92:SER:N	2.37	0.40
5:K:13:ILE:HG13	5:K:85:ILE:HD11	2.04	0.40
6:M:41:U:H3'	6:M:42:A:H2'	2.02	0.40
7:N:13:DA:H2''	7:N:14:DG:H8	1.86	0.40
3:D:135:GLN:OE1	3:D:135:GLN:N	2.54	0.40
3:F:148:LEU:HD11	3:F:243:GLU:HA	2.03	0.40
3:F:258:PHE:CD2	3:F:259:ILE:HD13	2.57	0.40
3:H:75:VAL:HG13	3:H:100:ASP:HB3	2.03	0.40
5:K:107:SER:HB3	5:L:78:PHE:CZ	2.57	0.40
7:N:17:DA:H2'	7:N:18:DT:H71	2.03	0.40
1:A:136:LEU:HD12	1:A:136:LEU:HA	1.97	0.40
3:H:273:TRP:HB3	3:H:305:MET:SD	2.61	0.40
4:I:198:TYR:O	4:I:202:LEU:HG	2.21	0.40
4:I:364:GLU:HA	4:I:368:ILE:HD12	2.03	0.40
5:L:107:SER:O	5:L:107:SER:OG	2.39	0.40
3:C:194:PHE:HD2	3:C:317:LEU:HD13	1.86	0.40
3:C:237:TYR:O	3:C:238:ILE:HG12	2.22	0.40
3:C:268:ASP:OD2	3:C:270:SER:OG	2.40	0.40
3:E:35:ARG:HG3	3:E:36:GLY:N	2.36	0.40
3:E:229:GLN:NE2	3:E:267:ILE:HG23	2.37	0.40
3:F:295:LYS:HE3	3:F:295:LYS:HB3	1.94	0.40
3:G:263:GLU:OE2	3:G:292:PRO:HD2	2.22	0.40
3:G:267:ILE:HD11	3:G:272:LEU:HD11	2.04	0.40

Continued on next page...

Continued from previous page...

Atom-1	Atom-2	Interatomic distance (Å)	Clash overlap (Å)
5:J:37:LYS:HG2	5:J:37:LYS:H	1.71	0.40

There are no symmetry-related clashes.

5.3 Torsion angles [i](#)

5.3.1 Protein backbone [i](#)

In the following table, the Percentiles column shows the percent Ramachandran outliers of the chain as a percentile score with respect to all PDB entries followed by that with respect to all EM entries.

The Analysed column shows the number of residues for which the backbone conformation was analysed, and the total number of residues.

Mol	Chain	Analysed	Favoured	Allowed	Outliers	Percentiles	
1	A	210/212 (99%)	199 (95%)	10 (5%)	1 (0%)	29	63
2	B	211/220 (96%)	201 (95%)	9 (4%)	1 (0%)	29	63
3	C	281/323 (87%)	249 (89%)	30 (11%)	2 (1%)	22	56
3	D	281/323 (87%)	242 (86%)	34 (12%)	5 (2%)	8	33
3	E	282/323 (87%)	258 (92%)	22 (8%)	2 (1%)	22	56
3	F	281/323 (87%)	243 (86%)	36 (13%)	2 (1%)	22	56
3	G	281/323 (87%)	263 (94%)	16 (6%)	2 (1%)	22	56
3	H	281/323 (87%)	257 (92%)	22 (8%)	2 (1%)	22	56
4	I	492/534 (92%)	478 (97%)	12 (2%)	2 (0%)	34	67
5	J	107/138 (78%)	99 (92%)	8 (8%)	0	100	100
5	K	107/138 (78%)	98 (92%)	8 (8%)	1 (1%)	17	50
5	L	107/138 (78%)	105 (98%)	2 (2%)	0	100	100
All	All	2921/3318 (88%)	2692 (92%)	209 (7%)	20 (1%)	26	56

All (20) Ramachandran outliers are listed below:

Mol	Chain	Res	Type
3	D	136	ARG
3	E	247	PRO
3	F	247	PRO

Continued on next page...

Continued from previous page...

Mol	Chain	Res	Type
4	I	334	TYR
3	G	267	ILE
4	I	361	ASN
1	A	202	ASP
3	D	157	LEU
3	F	136	ARG
2	B	185	ASN
3	D	161	SER
3	G	75	VAL
3	H	38	LYS
3	E	267	ILE
3	C	267	ILE
5	K	92	SER
3	D	158	GLY
3	D	267	ILE
3	H	267	ILE
3	C	238	ILE

5.3.2 Protein sidechains [i](#)

In the following table, the Percentiles column shows the percent sidechain outliers of the chain as a percentile score with respect to all PDB entries followed by that with respect to all EM entries.

The Analysed column shows the number of residues for which the sidechain conformation was analysed, and the total number of residues.

Mol	Chain	Analysed	Rotameric	Outliers	Percentiles	
1	A	193/193 (100%)	188 (97%)	5 (3%)	46	73
2	B	187/193 (97%)	182 (97%)	5 (3%)	44	72
3	C	250/287 (87%)	244 (98%)	6 (2%)	49	75
3	D	250/287 (87%)	240 (96%)	10 (4%)	31	62
3	E	251/287 (88%)	242 (96%)	9 (4%)	35	66
3	F	250/287 (87%)	240 (96%)	10 (4%)	31	62
3	G	250/287 (87%)	246 (98%)	4 (2%)	62	84
3	H	250/287 (87%)	243 (97%)	7 (3%)	43	71
4	I	449/489 (92%)	437 (97%)	12 (3%)	44	72
5	J	98/126 (78%)	96 (98%)	2 (2%)	55	79
5	K	98/126 (78%)	94 (96%)	4 (4%)	30	61

Continued on next page...

Continued from previous page...

Mol	Chain	Analysed	Rotameric	Outliers	Percentiles	
5	L	98/126 (78%)	97 (99%)	1 (1%)	76	89
All	All	2624/2975 (88%)	2549 (97%)	75 (3%)	45	70

All (75) residues with a non-rotameric sidechain are listed below:

Mol	Chain	Res	Type
1	A	16	PHE
1	A	18	GLU
1	A	108	ASP
1	A	160	ARG
1	A	203	LEU
2	B	98	PHE
2	B	116	TYR
2	B	154	GLN
2	B	171	GLN
2	B	175	ARG
3	C	32	ASP
3	C	34	ARG
3	C	221	PHE
3	C	244	TYR
3	C	294	ASN
3	C	305	MET
3	D	136	ARG
3	D	142	MET
3	D	157	LEU
3	D	160	LYS
3	D	181	GLN
3	D	183	TYR
3	D	221	PHE
3	D	248	LYS
3	D	260	ASP
3	D	264	CYS
3	E	28	SER
3	E	134	ASN
3	E	142	MET
3	E	206	ASN
3	E	209	LYS
3	E	221	PHE
3	E	244	TYR
3	E	246	ASP
3	E	248	LYS
3	F	30	ASN

Continued on next page...

Continued from previous page...

Mol	Chain	Res	Type
3	F	77	ARG
3	F	137	MET
3	F	182	TYR
3	F	190	HIS
3	F	221	PHE
3	F	244	TYR
3	F	255	SER
3	F	259	ILE
3	F	264	CYS
3	G	28	SER
3	G	160	LYS
3	G	200	MET
3	G	221	PHE
3	H	30	ASN
3	H	32	ASP
3	H	135	GLN
3	H	155	VAL
3	H	166	ASP
3	H	190	HIS
3	H	221	PHE
4	I	23	ARG
4	I	46	ARG
4	I	60	GLU
4	I	62	PHE
4	I	106	HIS
4	I	110	CYS
4	I	116	LEU
4	I	132	PHE
4	I	209	CYS
4	I	298	ARG
4	I	358	TRP
4	I	375	LEU
5	J	8	ASP
5	J	56	TYR
5	K	49	ARG
5	K	55	CYS
5	K	56	TYR
5	K	102	LEU
5	L	49	ARG

Sometimes sidechains can be flipped to improve hydrogen bonding and reduce clashes. All (11) such sidechains are listed below:

Mol	Chain	Res	Type
2	B	162	GLN
3	C	30	ASN
3	E	134	ASN
3	E	135	GLN
3	F	84	HIS
3	F	135	GLN
3	G	30	ASN
3	G	42	GLN
3	H	30	ASN
4	I	342	ASN
5	L	79	ASN

5.3.3 RNA [i](#)

Mol	Chain	Analysed	Backbone Outliers	Pucker Outliers
6	M	62/71 (87%)	23 (37%)	4 (6%)

All (23) RNA backbone outliers are listed below:

Mol	Chain	Res	Type
6	M	2	U
6	M	3	G
6	M	4	C
6	M	8	A
6	M	9	G
6	M	15	U
6	M	21	A
6	M	26	G
6	M	27	G
6	M	28	C
6	M	33	G
6	M	39	C
6	M	41	U
6	M	42	A
6	M	44	G
6	M	45	U
6	M	46	G
6	M	47	A
6	M	48	G
6	M	49	U
6	M	50	C
6	M	53	G

Continued on next page...

Continued from previous page...

Mol	Chain	Res	Type
6	M	54	G

All (4) RNA pucker outliers are listed below:

Mol	Chain	Res	Type
6	M	3	G
6	M	14	G
6	M	26	G
6	M	41	U

5.4 Non-standard residues in protein, DNA, RNA chains [i](#)

There are no non-standard protein/DNA/RNA residues in this entry.

5.5 Carbohydrates [i](#)

There are no monosaccharides in this entry.

5.6 Ligand geometry [i](#)

There are no ligands in this entry.

5.7 Other polymers [i](#)

There are no such residues in this entry.

5.8 Polymer linkage issues [i](#)

There are no chain breaks in this entry.

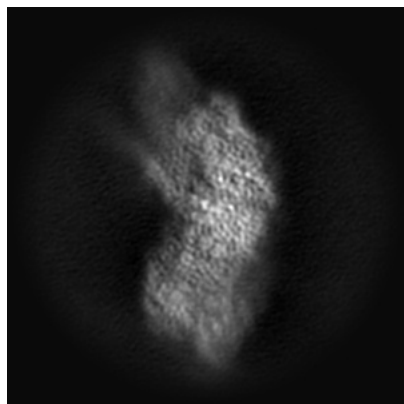
6 Map visualisation [i](#)

This section contains visualisations of the EMDB entry EMD-29040. These allow visual inspection of the internal detail of the map and identification of artifacts.

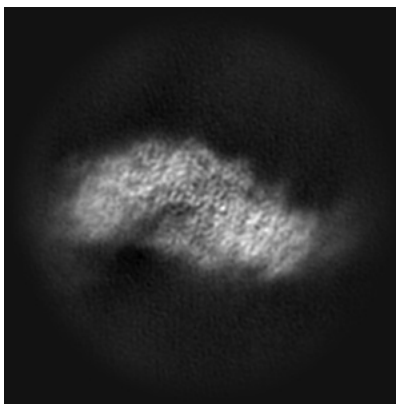
Images derived from a raw map, generated by summing the deposited half-maps, are presented below the corresponding image components of the primary map to allow further visual inspection and comparison with those of the primary map.

6.1 Orthogonal projections [i](#)

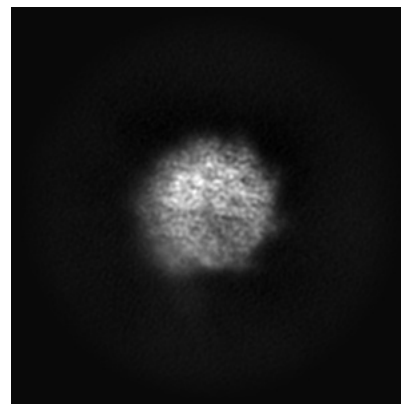
6.1.1 Primary map



X

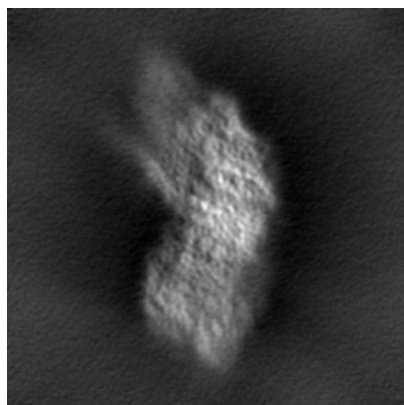


Y

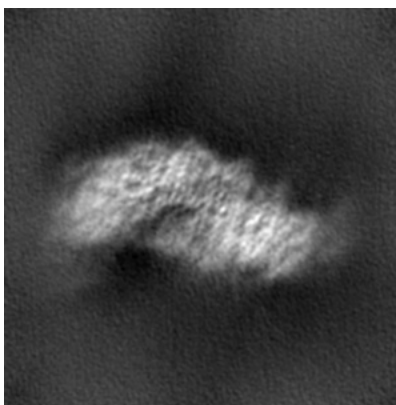


Z

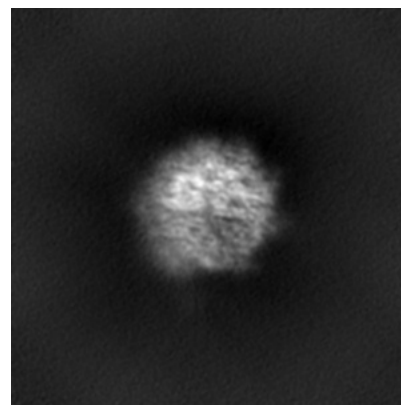
6.1.2 Raw map



X



Y

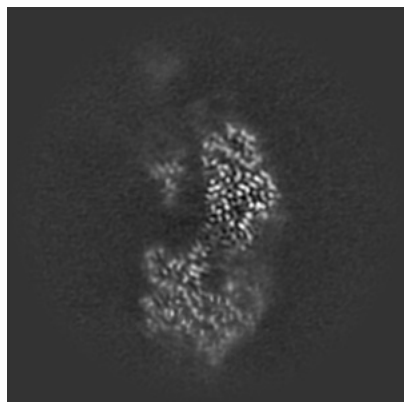


Z

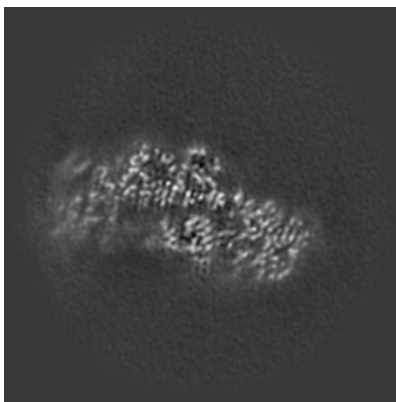
The images above show the map projected in three orthogonal directions.

6.2 Central slices [i](#)

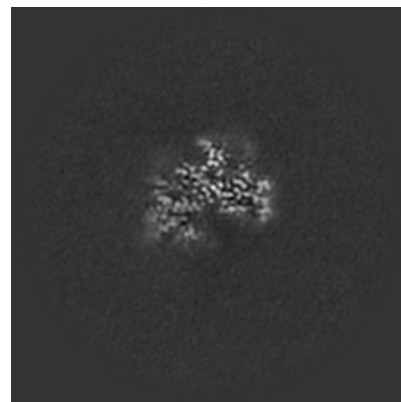
6.2.1 Primary map



X Index: 128

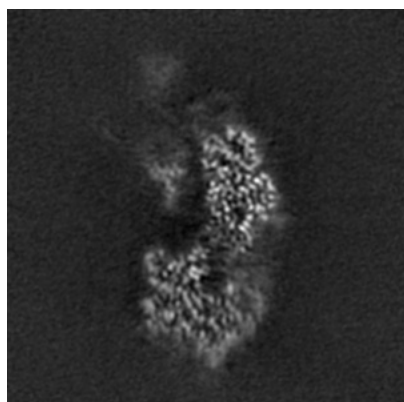


Y Index: 128

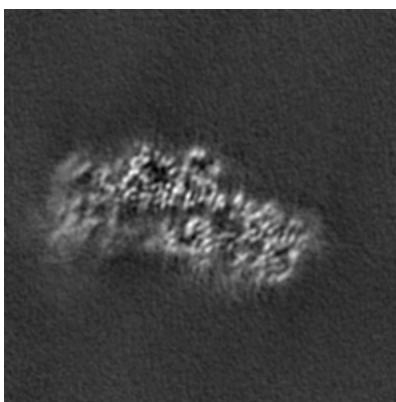


Z Index: 128

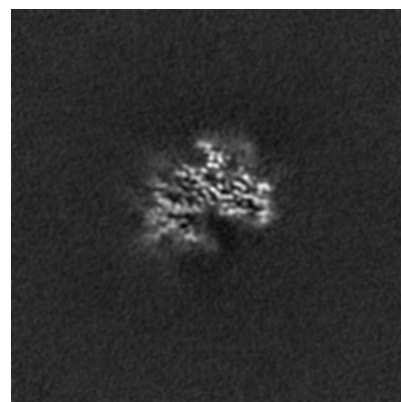
6.2.2 Raw map



X Index: 128



Y Index: 128

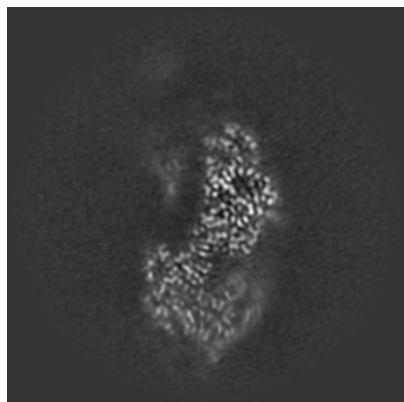


Z Index: 128

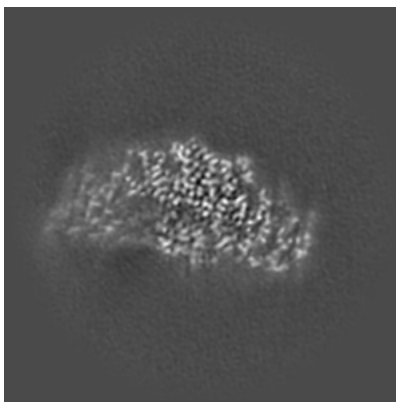
The images above show central slices of the map in three orthogonal directions.

6.3 Largest variance slices [i](#)

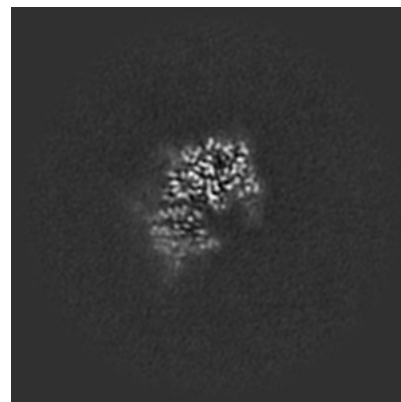
6.3.1 Primary map



X Index: 131

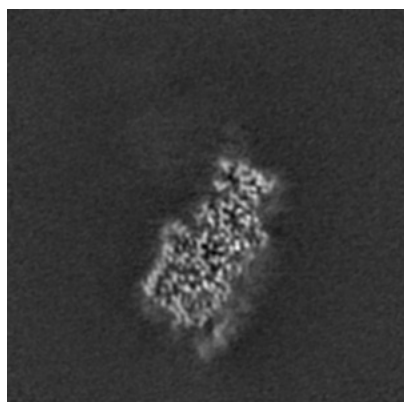


Y Index: 139

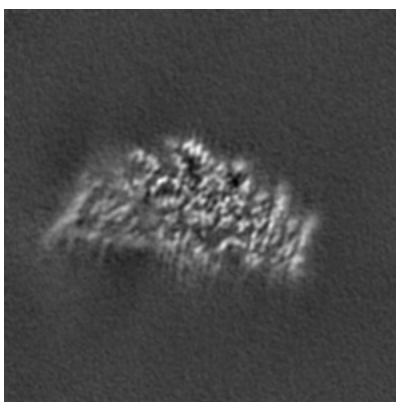


Z Index: 140

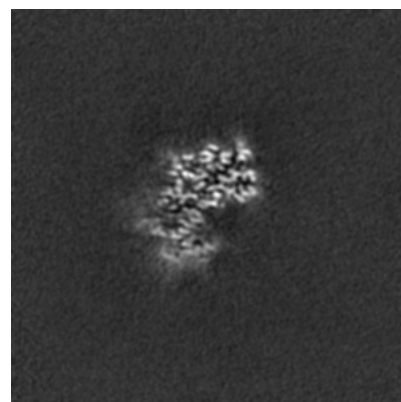
6.3.2 Raw map



X Index: 147



Y Index: 143

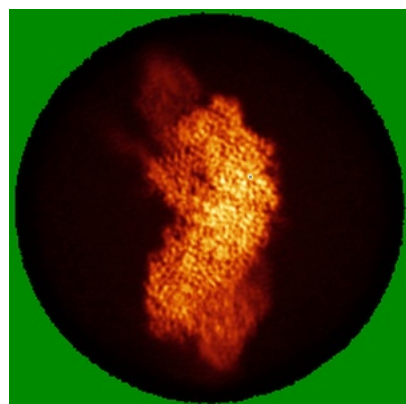


Z Index: 144

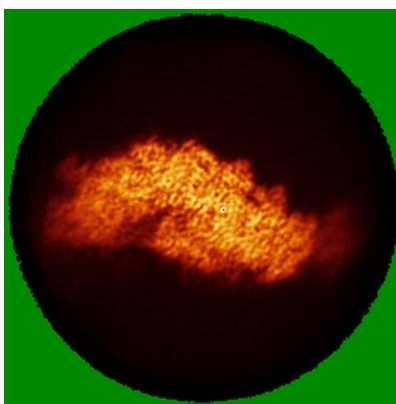
The images above show the largest variance slices of the map in three orthogonal directions.

6.4 Orthogonal standard-deviation projections (False-color) [i](#)

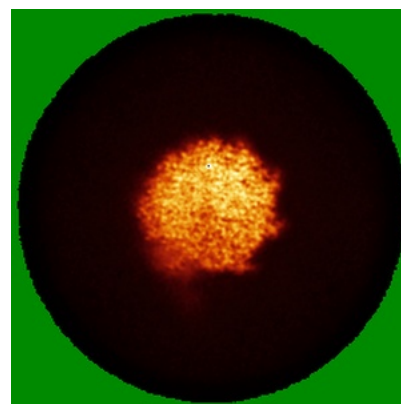
6.4.1 Primary map



X

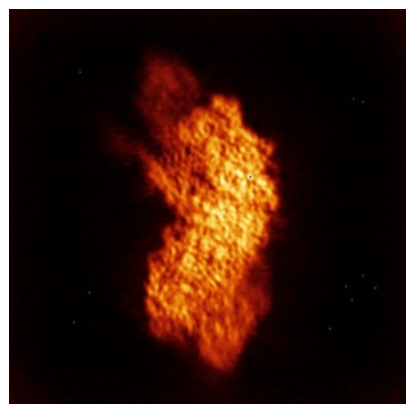


Y

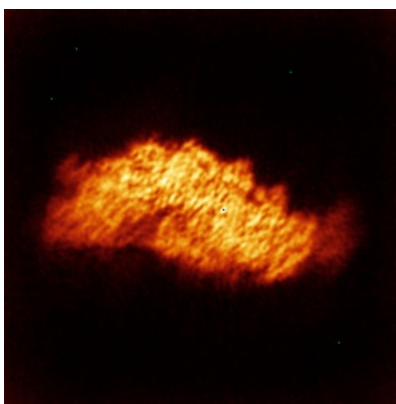


Z

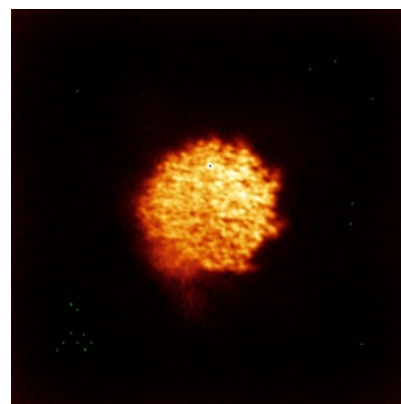
6.4.2 Raw map



X



Y

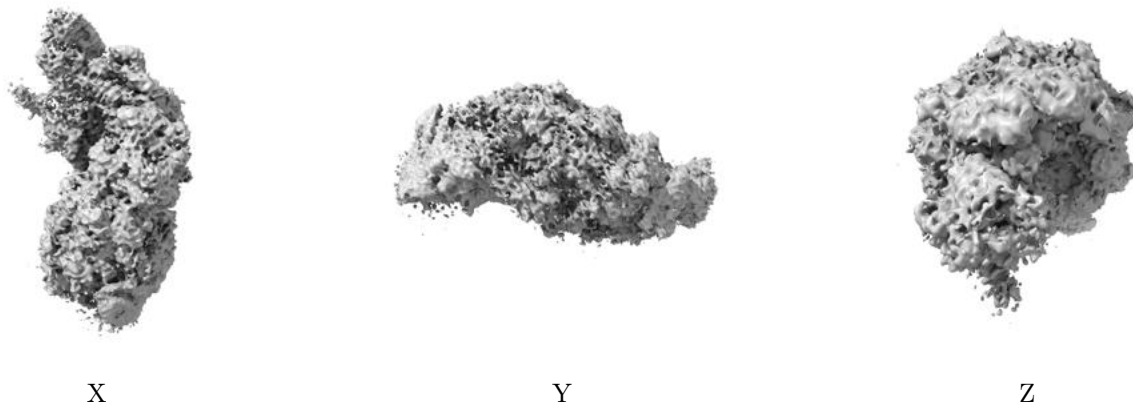


Z

The images above show the map standard deviation projections with false color in three orthogonal directions. Minimum values are shown in green, max in blue, and dark to light orange shades represent small to large values respectively.

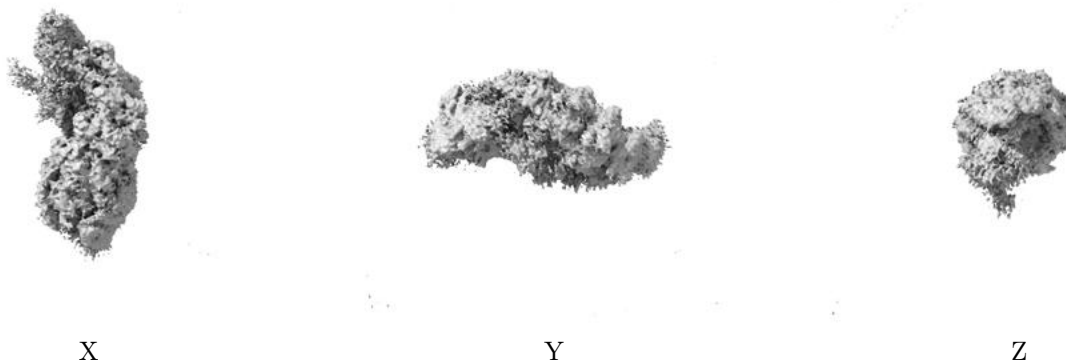
6.5 Orthogonal surface views [i](#)

6.5.1 Primary map



The images above show the 3D surface view of the map at the recommended contour level 0.048. These images, in conjunction with the slice images, may facilitate assessment of whether an appropriate contour level has been provided.

6.5.2 Raw map



These images show the 3D surface of the raw map. The raw map's contour level was selected so that its surface encloses the same volume as the primary map does at its recommended contour level.

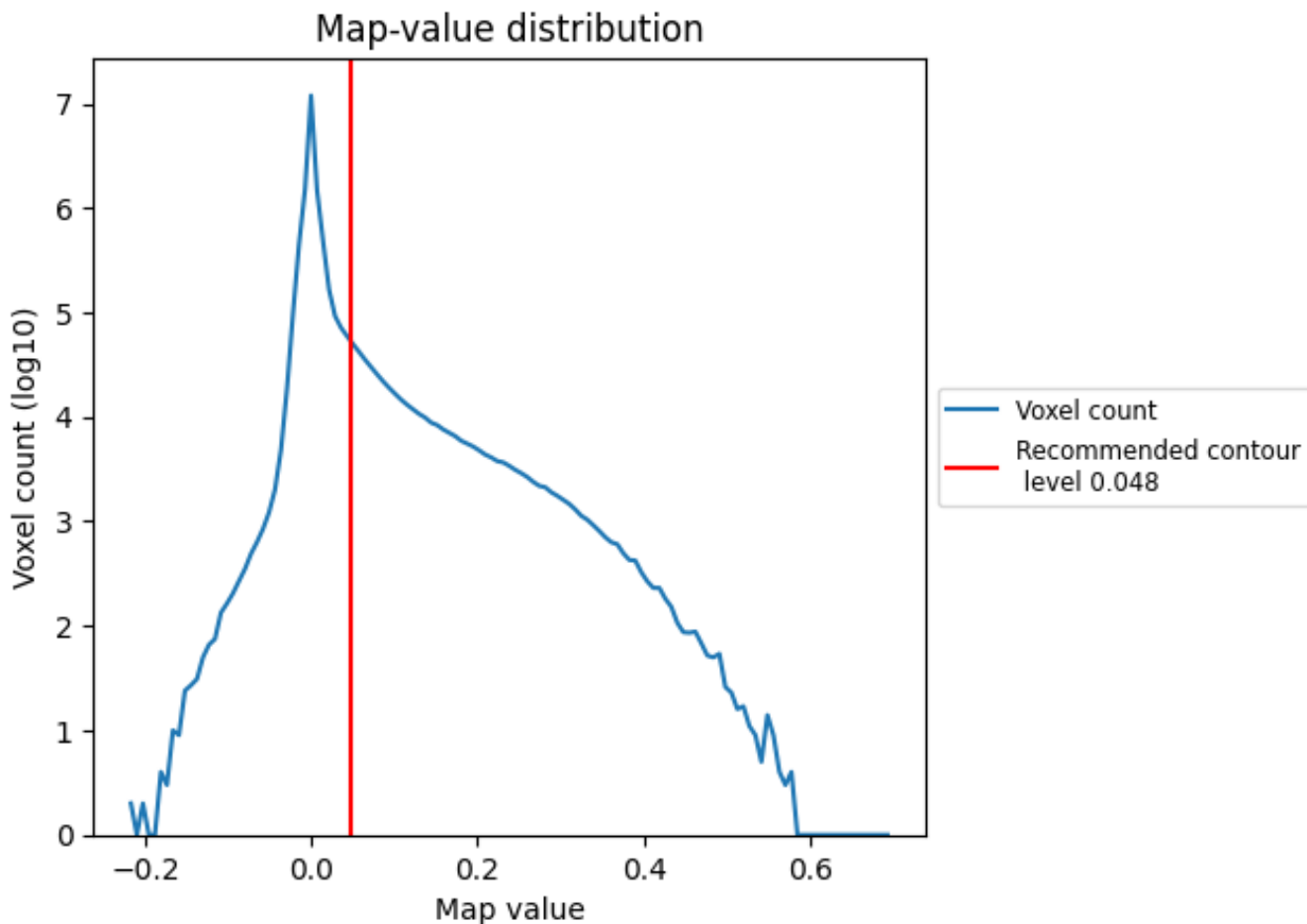
6.6 Mask visualisation [i](#)

This section was not generated. No masks/segmentation were deposited.

7 Map analysis [i](#)

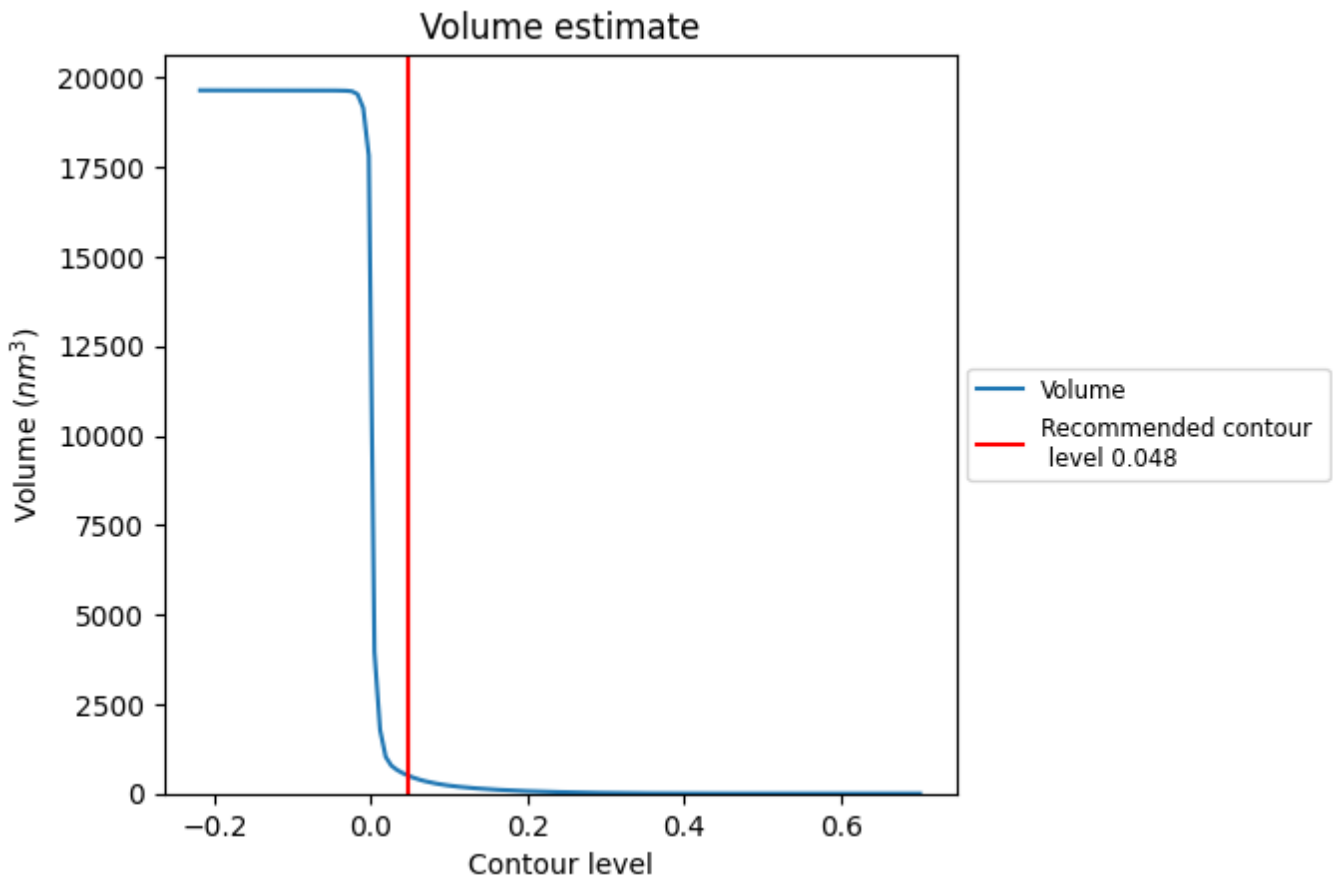
This section contains the results of statistical analysis of the map.

7.1 Map-value distribution [i](#)



The map-value distribution is plotted in 128 intervals along the x-axis. The y-axis is logarithmic. A spike in this graph at zero usually indicates that the volume has been masked.

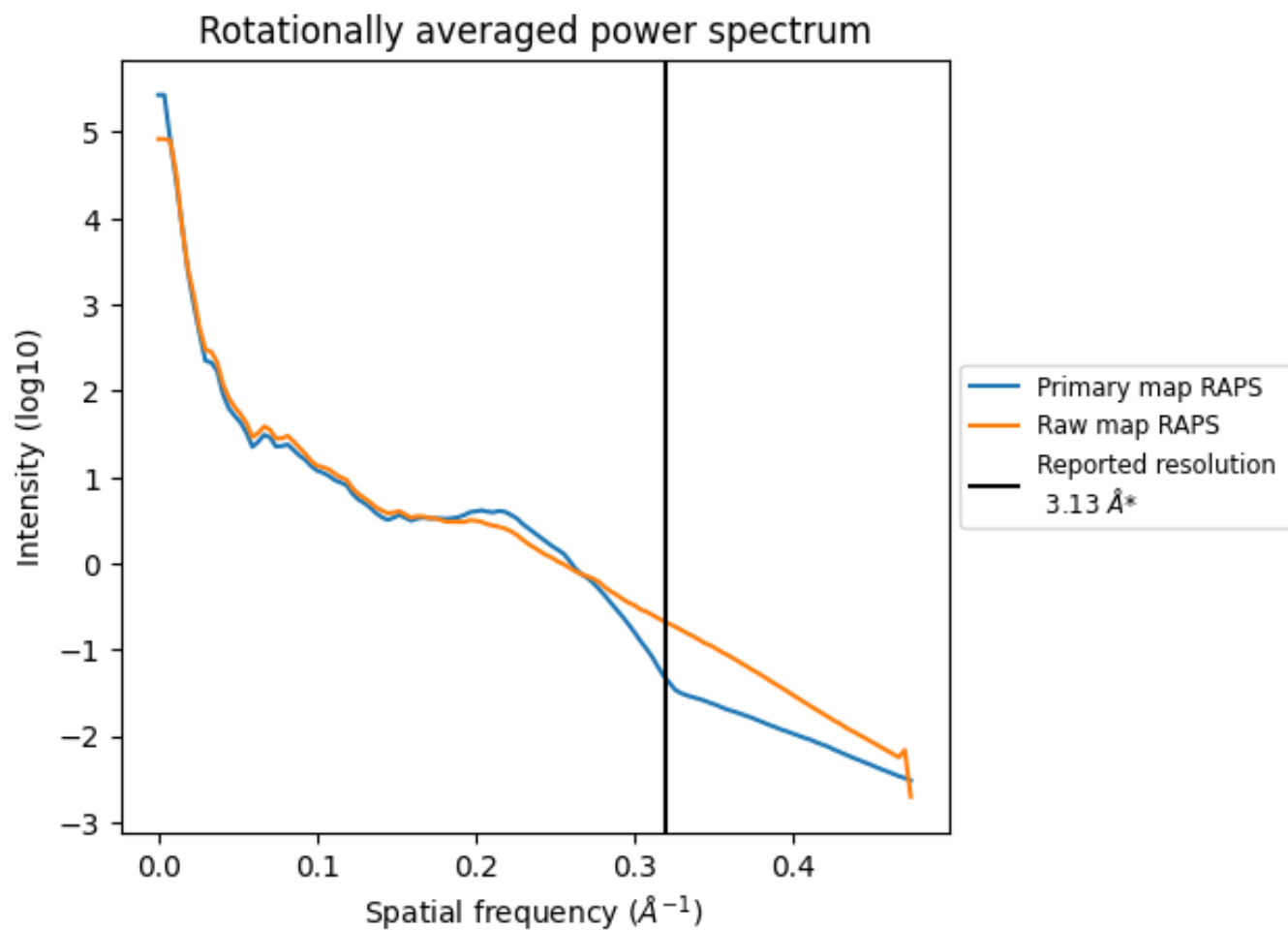
7.2 Volume estimate [i](#)



The volume at the recommended contour level is 499 nm³; this corresponds to an approximate mass of 451 kDa.

The volume estimate graph shows how the enclosed volume varies with the contour level. The recommended contour level is shown as a vertical line and the intersection between the line and the curve gives the volume of the enclosed surface at the given level.

7.3 Rotationally averaged power spectrum [i](#)

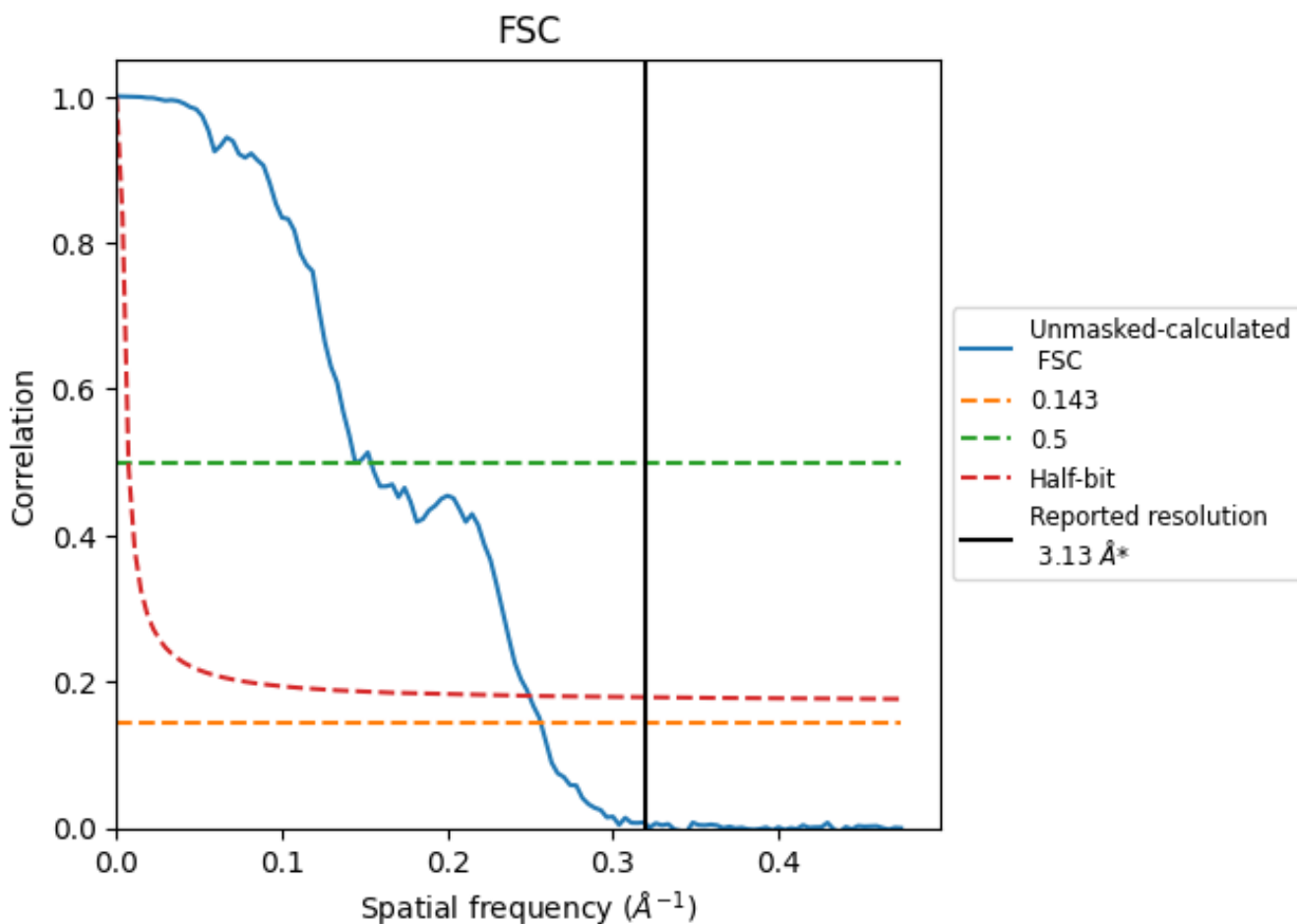


*Reported resolution corresponds to spatial frequency of 0.319 Å⁻¹

8 Fourier-Shell correlation [i](#)

Fourier-Shell Correlation (FSC) is the most commonly used method to estimate the resolution of single-particle and subtomogram-averaged maps. The shape of the curve depends on the imposed symmetry, mask and whether or not the two 3D reconstructions used were processed from a common reference. The reported resolution is shown as a black line. A curve is displayed for the half-bit criterion in addition to lines showing the 0.143 gold standard cut-off and 0.5 cut-off.

8.1 FSC [i](#)



*Reported resolution corresponds to spatial frequency of 0.319 Å⁻¹

8.2 Resolution estimates [i](#)

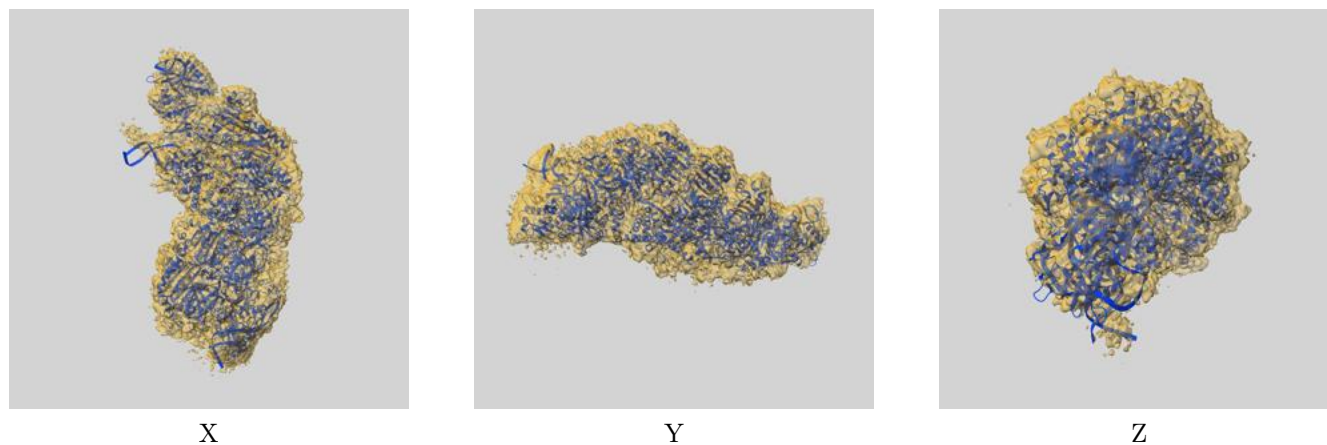
Resolution estimate (Å)	Estimation criterion (FSC cut-off)		
	0.143	0.5	Half-bit
Reported by author	3.13	-	-
Author-provided FSC curve	-	-	-
Unmasked-calculated*	3.90	6.93	4.01

*Resolution estimate based on FSC curve calculated by comparison of deposited half-maps. The value from deposited half-maps intersecting FSC 0.143 CUT-OFF 3.90 differs from the reported value 3.13 by more than 10 %

9 Map-model fit [i](#)

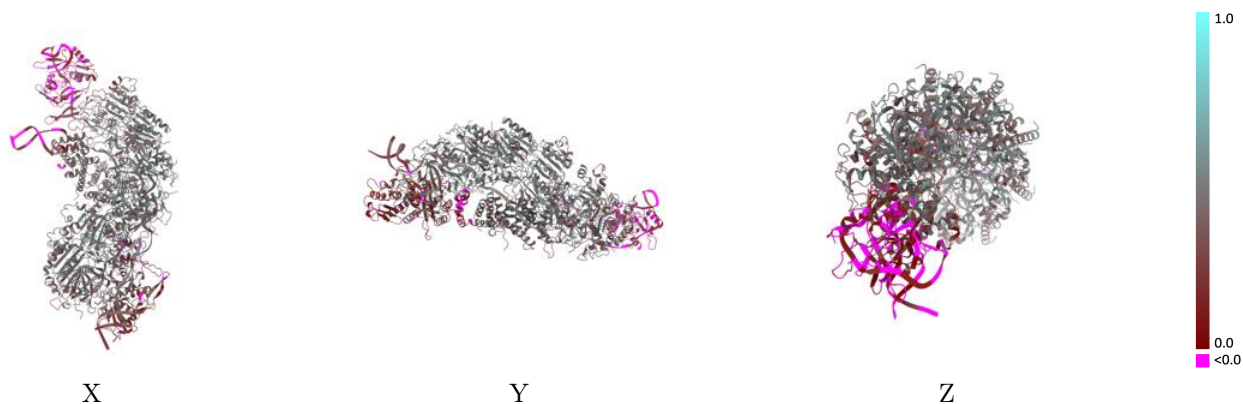
This section contains information regarding the fit between EMDB map EMD-29040 and PDB model 8FF5. Per-residue inclusion information can be found in section 3 on page 6.

9.1 Map-model overlay [i](#)



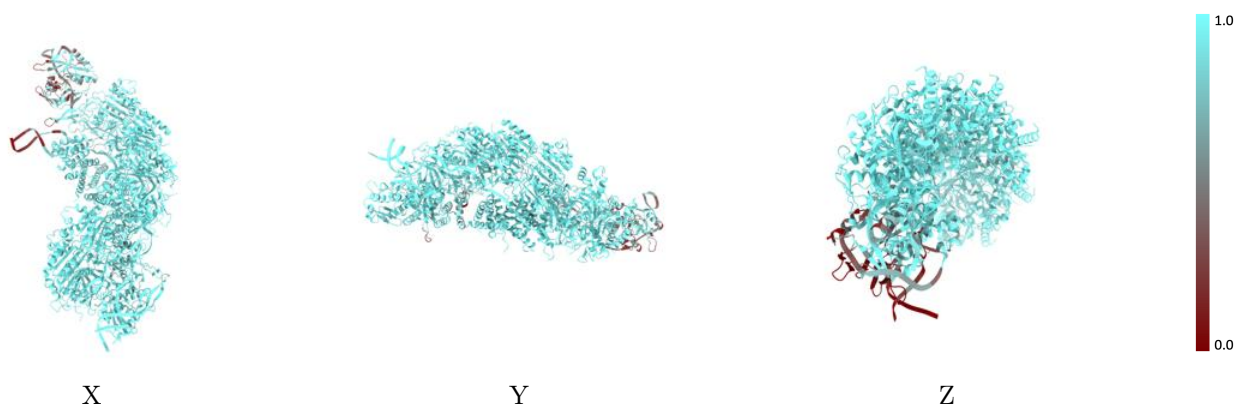
The images above show the 3D surface view of the map at the recommended contour level 0.048 at 50% transparency in yellow overlaid with a ribbon representation of the model coloured in blue. These images allow for the visual assessment of the quality of fit between the atomic model and the map.

9.2 Q-score mapped to coordinate model [\(i\)](#)



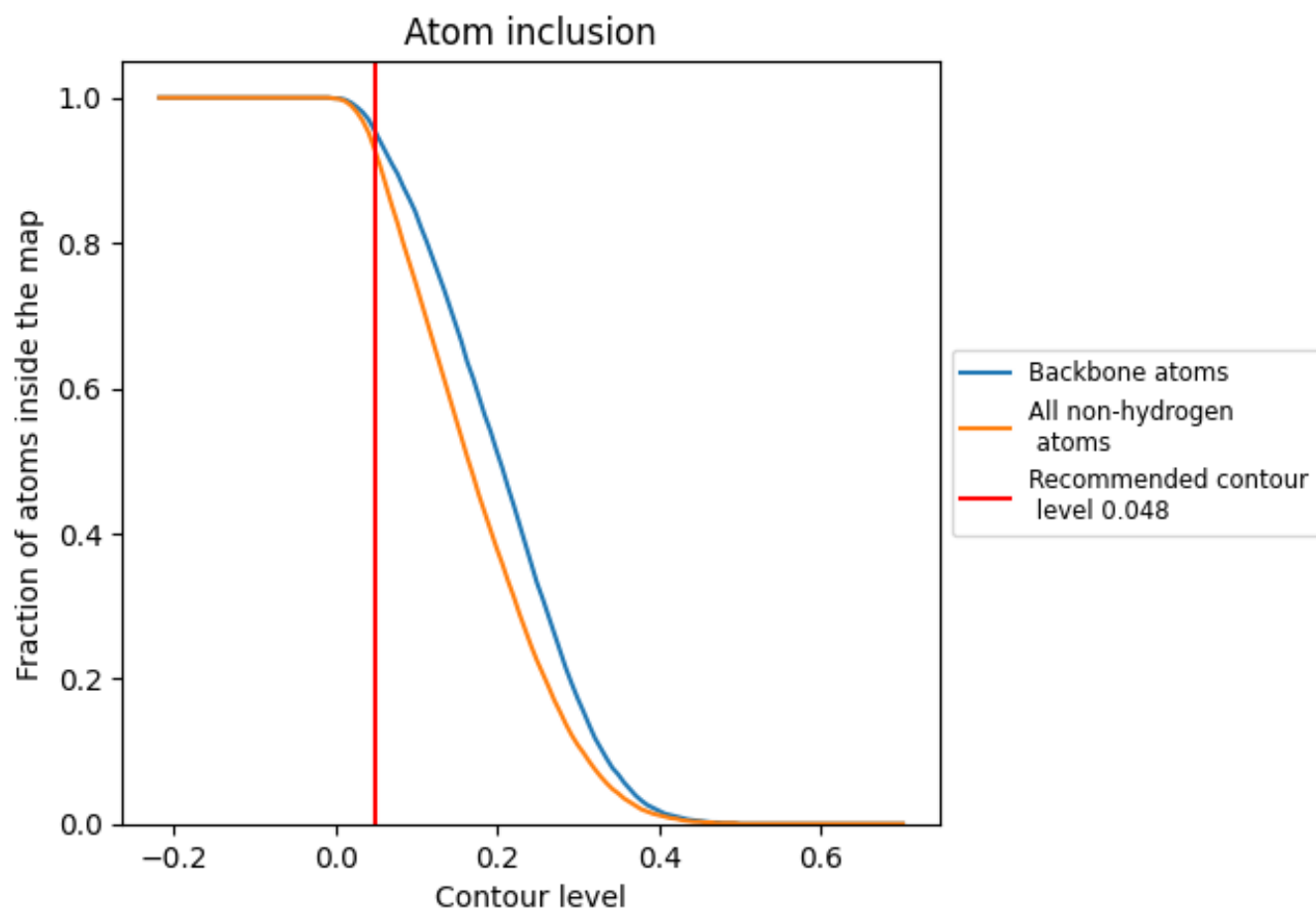
The images above show the model with each residue coloured according to its Q-score. This shows their resolvability in the map with higher Q-score values reflecting better resolvability. Please note: Q-score is calculating the resolvability of atoms, and thus high values are only expected at resolutions at which atoms can be resolved. Low Q-score values may therefore be expected for many entries.

9.3 Atom inclusion mapped to coordinate model [\(i\)](#)



The images above show the model with each residue coloured according to its atom inclusion. This shows to what extent they are inside the map at the recommended contour level (0.048).

































9.4 Atom inclusion [i](#)



At the recommended contour level, 96% of all backbone atoms, 93% of all non-hydrogen atoms, are inside the map.

9.5 Map-model fit summary

The table lists the average atom inclusion at the recommended contour level (0.048) and Q-score for the entire model and for each chain.

Chain	Atom inclusion	Q-score
All	 0.9290	 0.3720
A	 0.9660	 0.3850
B	 0.5990	 0.0270
C	 0.9610	 0.3980
D	 0.9890	 0.4540
E	 0.9860	 0.4730
F	 0.9830	 0.4710
G	 0.9950	 0.4750
H	 0.9860	 0.4520
I	 0.9150	 0.2740
J	 0.9460	 0.3370
K	 0.9670	 0.4040
L	 0.9630	 0.4110
M	 0.8420	 0.3060
N	 0.8510	 0.3560
O	 0.7290	 0.1610

