



Full wwPDB EM Validation Report ⓘ

Dec 10, 2022 – 08:54 am GMT

PDB ID : 5FIJ
EMDB ID : EMD-3168
Title : Bovine mitochondrial ATP synthase state 2c
Authors : Zhou, A.; Rohou, A.; Schep, D.G.; Bason, J.V.; Montgomery, M.G.; Walker, J.E.; Grigorieff, N.; Rubinstein, J.L.
Deposited on : 2015-09-28
Resolution : 7.40 Å (reported)
Based on initial models : 2CLY, 2XND, 2WSS

This is a Full wwPDB EM Validation Report for a publicly released PDB entry.

We welcome your comments at validation@mail.wwpdb.org

A user guide is available at

<https://www.wwpdb.org/validation/2017/EMValidationReportHelp>

with specific help available everywhere you see the ⓘ symbol.

The types of validation reports are described at

<http://www.wwpdb.org/validation/2017/FAQs#types>.

The following versions of software and data (see [references ⓘ](#)) were used in the production of this report:

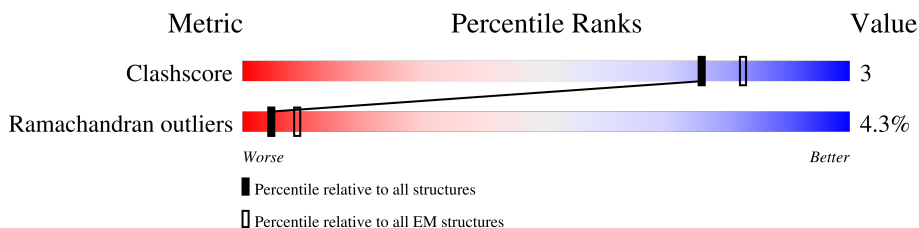
EMDB validation analysis : 0.0.1.dev43
MolProbity : 4.02b-467
Percentile statistics : 20191225.v01 (using entries in the PDB archive December 25th 2019)
MapQ : 1.9.9
Ideal geometry (proteins) : Engh & Huber (2001)
Ideal geometry (DNA, RNA) : Parkinson et al. (1996)
Validation Pipeline (wwPDB-VP) : 2.31.3

1 Overall quality at a glance i

The following experimental techniques were used to determine the structure:
ELECTRON MICROSCOPY

The reported resolution of this entry is 7.40 Å.

Percentile scores (ranging between 0-100) for global validation metrics of the entry are shown in the following graphic. The table shows the number of entries on which the scores are based.



Metric	Whole archive (#Entries)	EM structures (#Entries)
Clashscore	158937	4297
Ramachandran outliers	154571	4023

The table below summarises the geometric issues observed across the polymeric chains and their fit to the map. The red, orange, yellow and green segments of the bar indicate the fraction of residues that contain outliers for ≥ 3 , 2, 1 and 0 types of geometric quality criteria respectively. A grey segment represents the fraction of residues that are not modelled. The numeric value for each fraction is indicated below the corresponding segment, with a dot representing fractions $\leq 5\%$. The upper red bar (where present) indicates the fraction of residues that have poor fit to the EM map (all-atom inclusion $< 40\%$). The numeric value is given above the bar.

Mol	Chain	Length	Quality of chain
1	A	510	91% 7% .
1	B	510	85% 9% 6%
1	C	510	87% 7% . 5%
2	D	482	86% 10% .
2	E	482	88% 9% .
2	F	482	86% 10% . .
3	G	273	80% 14% . .
4	H	146	77% 13% 10%
5	I	50	72% 20% . 6%

Continued on next page...

Continued from previous page...

Mol	Chain	Length	Quality of chain
6	J	72	 97%
6	K	72	 99%
6	L	72	 100%
6	M	72	 97%
6	N	72	 100%
6	O	72	 99%
6	P	72	 99%
6	Q	72	 97%
7	S	190	 60% 22% 6% 12%
8	T	174	 86% 12%
9	U	124	 83% 11% 5%
10	V	77	 77% 9% 14%
11	W	217	 92% 7%

2 Entry composition i

There are 11 unique types of molecules in this entry. The entry contains 18543 atoms, of which 0 are hydrogens and 0 are deuteriums.

In the tables below, the AltConf column contains the number of residues with at least one atom in alternate conformation and the Trace column contains the number of residues modelled with at most 2 atoms.

- Molecule 1 is a protein called ATP SYNTHASE SUBUNIT ALPHA, MITOCHONDRIAL.

Mol	Chain	Residues	Atoms				AltConf	Trace
			Total	C	N	O		
1	A	509	2035	1018	509	508	0	0
1	B	480	1918	960	480	478	0	0
1	C	487	1947	974	487	486	0	0

There are 3 discrepancies between the modelled and reference sequences:

Chain	Residue	Modelled	Actual	Comment	Reference
A	481	GLY	SER	conflict	UNP P19483
B	481	GLY	SER	conflict	UNP P19483
C	481	GLY	SER	conflict	UNP P19483

- Molecule 2 is a protein called ATP SYNTHASE SUBUNIT BETA, MITOCHONDRIAL.

Mol	Chain	Residues	Atoms				AltConf	Trace
			Total	C	N	O		
2	D	467	1867	934	467	466	0	0
2	E	466	1863	932	466	465	0	0
2	F	466	1863	932	466	465	0	0

- Molecule 3 is a protein called ATP SYNTHASE SUBUNIT GAMMA, MITOCHONDRIAL.

Mol	Chain	Residues	Atoms				AltConf	Trace
			Total	C	N	O		
3	G	264	1053	528	264	261	0	0

- Molecule 4 is a protein called ATP SYNTHASE SUBUNIT DELTA, MITOCHONDRIAL.

Mol	Chain	Residues	Atoms				AltConf	Trace
			Total	C	N	O		
4	H	131	523	262	131	130	0	0

- Molecule 5 is a protein called ATP SYNTHASE SUBUNIT EPSILON, MITOCHONDRIAL.

Mol	Chain	Residues	Atoms				AltConf	Trace
			Total	C	N	O		
5	I	47	187	94	47	46	0	0

- Molecule 6 is a protein called ATP SYNTHASE F(0) COMPLEX SUBUNIT C1, MITOCHONDRIAL.

Mol	Chain	Residues	Atoms				AltConf	Trace
			Total	C	N	O		
6	J	72	288	144	72	72	0	0
6	K	72	288	144	72	72	0	0
6	L	72	288	144	72	72	0	0
6	M	72	288	144	72	72	0	0
6	N	72	288	144	72	72	0	0
6	O	72	288	144	72	72	0	0
6	P	72	288	144	72	72	0	0
6	Q	72	288	144	72	72	0	0

- Molecule 7 is a protein called ATP SYNTHASE SUBUNIT O, MITOCHONDRIAL.

Mol	Chain	Residues	Atoms				AltConf	Trace
			Total	C	N	O		
7	S	168	669	334	168	167	0	1

There is a discrepancy between the modelled and reference sequences:

Chain	Residue	Modelled	Actual	Comment	Reference
S	129	THR	ALA	conflict	UNP P13621

- Molecule 8 is a protein called ATP SYNTHASE F(0) COMPLEX SUBUNIT B1, MITOCHONDRIAL.

Mol	Chain	Residues	Atoms				AltConf	Trace
			Total	C	N	O		
8	T	174	697	348	174	175	0	0

- Molecule 9 is a protein called ATP SYNTHASE SUBUNIT D, MITOCHONDRIAL.

Mol	Chain	Residues	Atoms				AltConf	Trace
			Total	C	N	O		
9	U	121	484	242	121	121	0	0

- Molecule 10 is a protein called ATP SYNTHASE-COUPPLING FACTOR 6, MITOCHONDRIAL.

Mol	Chain	Residues	Atoms				AltConf	Trace
			Total	C	N	O		
10	V	66	264	132	66	66	0	0

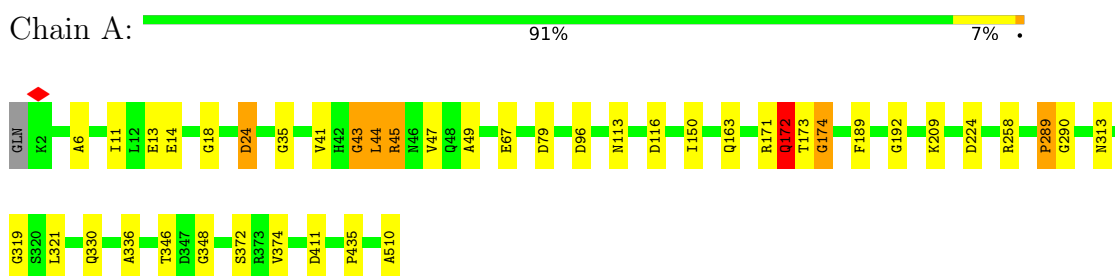
- Molecule 11 is a protein called ATP SYNTHASE SUBUNIT BETA, MITOCHONDRIAL.

Mol	Chain	Residues	Atoms				AltConf	Trace
			Total	C	N	O		
11	W	217	869	434	217	218	0	0

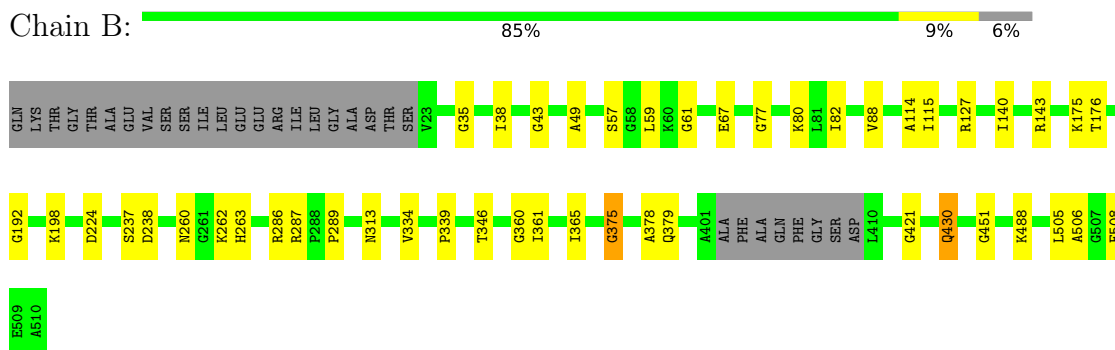
3 Residue-property plots

These plots are drawn for all protein, RNA, DNA and oligosaccharide chains in the entry. The first graphic for a chain summarises the proportions of the various outlier classes displayed in the second graphic. The second graphic shows the sequence view annotated by issues in geometry and atom inclusion in map density. Residues are color-coded according to the number of geometric quality criteria for which they contain at least one outlier: green = 0, yellow = 1, orange = 2 and red = 3 or more. A red diamond above a residue indicates a poor fit to the EM map for this residue (all-atom inclusion < 40%). Stretches of 2 or more consecutive residues without any outlier are shown as a green connector. Residues present in the sample, but not in the model, are shown in grey.

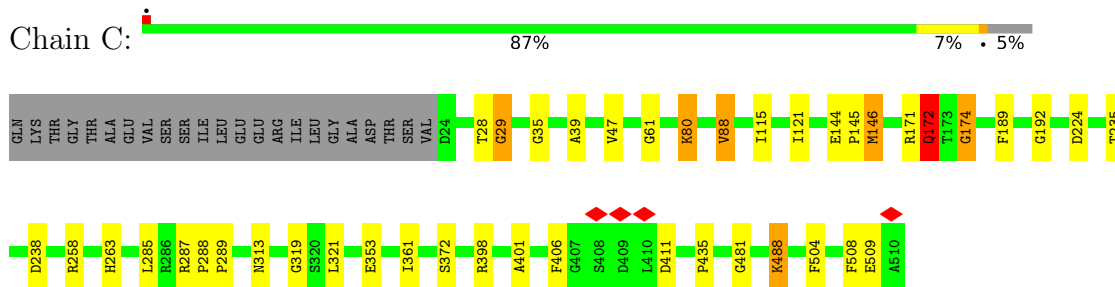
- Molecule 1: ATP SYNTHASE SUBUNIT ALPHA, MITOCHONDRIAL



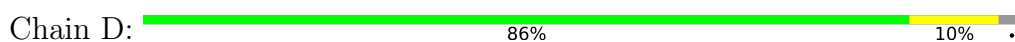
- Molecule 1: ATP SYNTHASE SUBUNIT ALPHA, MITOCHONDRIAL

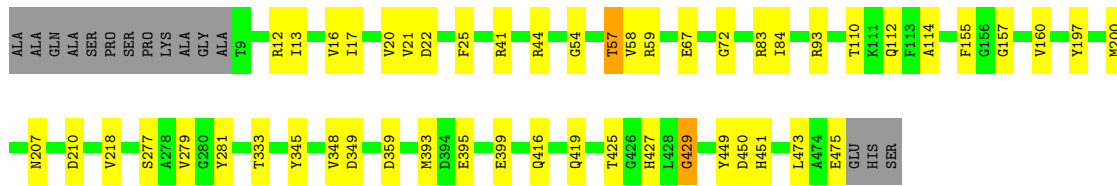


- Molecule 1: ATP SYNTHASE SUBUNIT ALPHA, MITOCHONDRIAL

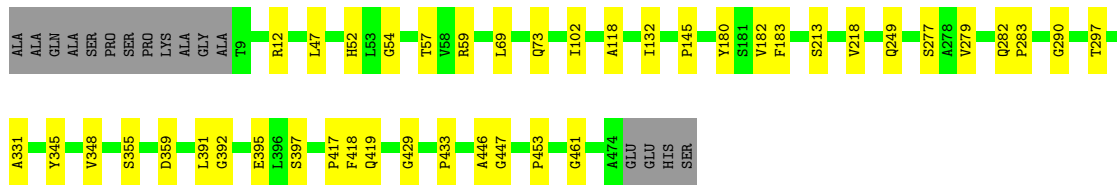
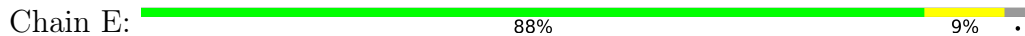


- Molecule 2: ATP SYNTHASE SUBUNIT BETA, MITOCHONDRIAL

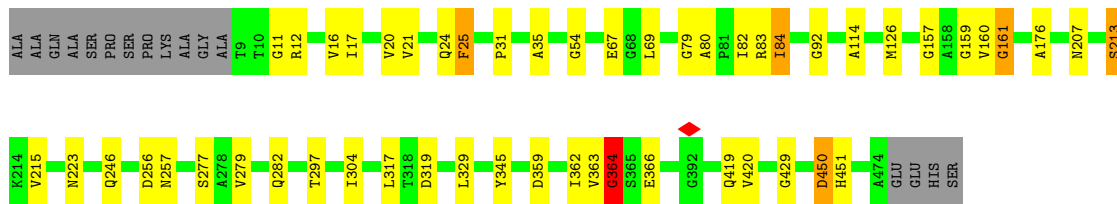




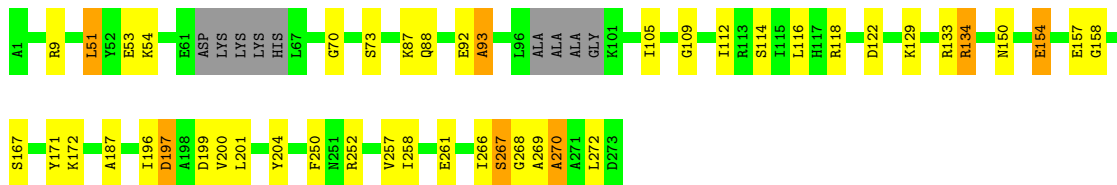
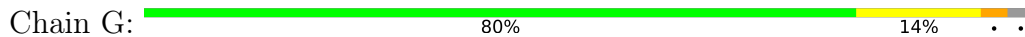
• Molecule 2: ATP SYNTHASE SUBUNIT BETA, MITOCHONDRIAL



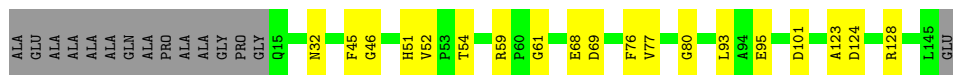
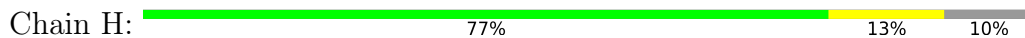
• Molecule 2: ATP SYNTHASE SUBUNIT BETA, MITOCHONDRIAL



• Molecule 3: ATP SYNTHASE SUBUNIT GAMMA, MITOCHONDRIAL



• Molecule 4: ATP SYNTHASE SUBUNIT DELTA, MITOCHONDRIAL



• Molecule 5: ATP SYNTHASE SUBUNIT EPSILON, MITOCHONDRIAL





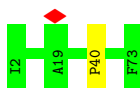
- Molecule 6: ATP SYNTHASE F(0) COMPLEX SUBUNIT C1, MITOCHONDRIAL

Chain J: 97%



- Molecule 6: ATP SYNTHASE F(0) COMPLEX SUBUNIT C1, MITOCHONDRIAL

Chain K: 99%



- Molecule 6: ATP SYNTHASE F(0) COMPLEX SUBUNIT C1, MITOCHONDRIAL

Chain L: 100%

There are no outlier residues recorded for this chain.

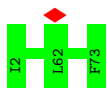
- Molecule 6: ATP SYNTHASE F(0) COMPLEX SUBUNIT C1, MITOCHONDRIAL

Chain M: 97%



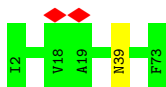
- Molecule 6: ATP SYNTHASE F(0) COMPLEX SUBUNIT C1, MITOCHONDRIAL

Chain N: 100%



- Molecule 6: ATP SYNTHASE F(0) COMPLEX SUBUNIT C1, MITOCHONDRIAL

Chain O: 99%



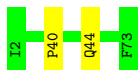
- Molecule 6: ATP SYNTHASE F(0) COMPLEX SUBUNIT C1, MITOCHONDRIAL

Chain P: 99%



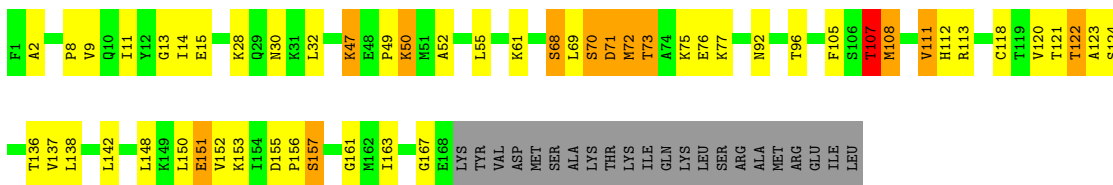
- Molecule 6: ATP SYNTHASE F(0) COMPLEX SUBUNIT C1, MITOCHONDRIAL

Chain Q: 97%



- Molecule 7: ATP SYNTHASE SUBUNIT O, MITOCHONDRIAL

Chain S: 60% 22% 6% 12%



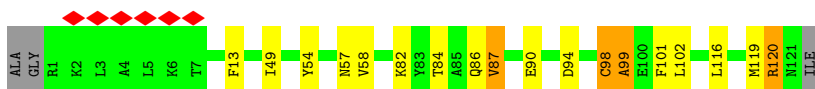
- Molecule 8: ATP SYNTHASE F(0) COMPLEX SUBUNIT B1, MITOCHONDRIAL

Chain T: 86% 12%



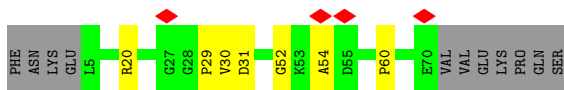
- Molecule 9: ATP SYNTHASE SUBUNIT D, MITOCHONDRIAL

Chain U: 5% 83% 11%



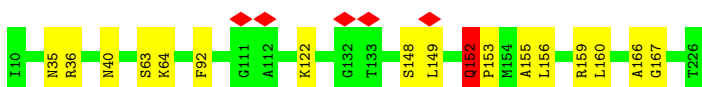
- Molecule 10: ATP SYNTHASE-COUPLING FACTOR 6, MITOCHONDRIAL

Chain V: 5% 77% 9% 14%



- Molecule 11: ATP SYNTHASE SUBUNIT BETA, MITOCHONDRIAL

Chain W: 92% 7%



4 Experimental information

Property	Value	Source
EM reconstruction method	SINGLE PARTICLE	Depositor
Imposed symmetry	POINT, C1	Depositor
Number of particles used	18899	Depositor
Resolution determination method	Not provided	
CTF correction method	EACH PARTICLE	Depositor
Microscope	FEI TITAN KRIOS	Depositor
Voltage (kV)	300	Depositor
Electron dose ($e^-/\text{\AA}^2$)	60.3	Depositor
Minimum defocus (nm)	1200	Depositor
Maximum defocus (nm)	4100	Depositor
Magnification	30487	Depositor
Image detector	GATAN K2 (4k x 4k)	Depositor
Maximum map value	0.443	Depositor
Minimum map value	-0.093	Depositor
Average map value	-0.000	Depositor
Map value standard deviation	0.022	Depositor
Recommended contour level	0.13	Depositor
Map size (\AA)	419.84, 419.84, 419.84	wwPDB
Map dimensions	256, 256, 256	wwPDB
Map angles ($^\circ$)	90.0, 90.0, 90.0	wwPDB
Pixel spacing (\AA)	1.64, 1.64, 1.64	Depositor

5 Model quality i

5.1 Standard geometry i

The Z score for a bond length (or angle) is the number of standard deviations the observed value is removed from the expected value. A bond length (or angle) with $|Z| > 5$ is considered an outlier worth inspection. RMSZ is the root-mean-square of all Z scores of the bond lengths (or angles).

Mol	Chain	Bond lengths		Bond angles	
		RMSZ	# Z >5	RMSZ	# Z >5
1	A	1.76	4/2034 (0.2%)	1.43	17/2541 (0.7%)
1	B	1.83	6/1916 (0.3%)	1.48	18/2392 (0.8%)
1	C	1.77	1/1946 (0.1%)	1.44	19/2431 (0.8%)
2	D	1.80	4/1866 (0.2%)	1.50	22/2331 (0.9%)
2	E	1.67	2/1862 (0.1%)	1.47	16/2326 (0.7%)
2	F	1.82	9/1862 (0.5%)	1.46	16/2326 (0.7%)
3	G	1.93	6/1050 (0.6%)	1.57	14/1308 (1.1%)
4	H	2.05	2/522 (0.4%)	1.76	6/651 (0.9%)
5	I	1.86	0/186	1.50	2/231 (0.9%)
6	J	0.30	0/287	0.41	0/357
6	K	0.30	0/287	0.42	0/357
6	L	0.30	0/287	0.45	0/357
6	M	0.29	0/287	0.44	0/357
6	N	0.28	0/287	0.40	0/357
6	O	0.31	0/287	0.41	0/357
6	P	0.29	0/287	0.43	0/357
6	Q	0.29	0/287	0.44	0/357
7	S	1.70	3/668 (0.4%)	1.74	13/834 (1.6%)
8	T	1.14	2/696 (0.3%)	1.33	10/867 (1.2%)
9	U	0.33	0/483	0.47	0/602
10	V	0.63	0/263	0.93	0/327
11	W	0.79	1/868 (0.1%)	0.91	1/1082 (0.1%)
All	All	1.59	40/18518 (0.2%)	1.35	154/23105 (0.7%)

Chiral center outliers are detected by calculating the chiral volume of a chiral center and verifying if the center is modelled as a planar moiety or with the opposite hand. A planarity outlier is detected by checking planarity of atoms in a peptide group, atoms in a mainchain group or atoms of a sidechain that are expected to be planar.

Mol	Chain	#Chirality outliers	#Planarity outliers
1	A	0	1
1	B	0	2
2	D	0	2

Continued on next page...

Continued from previous page...

Mol	Chain	#Chirality outliers	#Planarity outliers
2	E	0	3
2	F	0	5
3	G	0	3
4	H	0	1
5	I	0	1
7	S	0	9
8	T	0	17
9	U	0	2
10	V	0	3
11	W	0	9
All	All	0	58

All (40) bond length outliers are listed below:

Mol	Chain	Res	Type	Atoms	Z	Observed(Å)	Ideal(Å)
8	T	93	ASP	N-CA	15.12	1.76	1.46
8	T	96	ARG	CA-C	13.65	1.88	1.52
3	G	109	GLY	CA-C	-7.87	1.39	1.51
7	S	72	MET	N-CA	7.27	1.60	1.46
3	G	261	GLU	CA-C	-6.83	1.35	1.52
2	F	11	GLY	CA-C	-6.11	1.42	1.51
2	F	364	GLY	CA-C	-6.00	1.42	1.51
3	G	252	ARG	CA-C	-5.99	1.37	1.52
1	B	339	PRO	CA-C	-5.98	1.40	1.52
4	H	46	GLY	CA-C	-5.89	1.42	1.51
2	F	12	ARG	N-CA	-5.82	1.34	1.46
2	F	246	GLN	CA-C	-5.67	1.38	1.52
2	F	366	GLU	CA-C	-5.63	1.38	1.52
1	B	176	THR	N-CA	-5.59	1.35	1.46
1	B	451	GLY	CA-C	-5.54	1.43	1.51
1	A	174	GLY	N-CA	-5.53	1.37	1.46
2	D	429	GLY	CA-C	-5.49	1.43	1.51
2	F	364	GLY	N-CA	-5.49	1.37	1.46
2	E	12	ARG	CA-C	-5.48	1.38	1.52
2	D	54	GLY	CA-C	-5.44	1.43	1.51
7	S	71	ASP	C-N	5.42	1.46	1.34
3	G	158	GLY	CA-C	-5.41	1.43	1.51
1	B	43	GLY	CA-C	-5.35	1.43	1.51
1	C	481	GLY	CA-C	-5.25	1.43	1.51
11	W	152	GLN	N-CA	-5.22	1.35	1.46
2	D	58	VAL	N-CA	-5.20	1.35	1.46
7	S	72	MET	CA-C	5.20	1.66	1.52

Continued on next page...

Continued from previous page...

Mol	Chain	Res	Type	Atoms	Z	Observed(Å)	Ideal(Å)
1	A	35	GLY	N-CA	-5.11	1.38	1.46
3	G	172	LYS	N-CA	-5.10	1.36	1.46
3	G	266	ILE	CA-C	-5.10	1.39	1.52
1	A	290	GLY	CA-C	-5.10	1.43	1.51
1	B	175	LYS	CA-C	-5.08	1.39	1.52
2	F	429	GLY	CA-C	-5.08	1.43	1.51
1	A	43	GLY	N-CA	-5.05	1.38	1.46
2	E	290	GLY	CA-C	-5.05	1.43	1.51
2	F	79	GLY	CA-C	-5.04	1.43	1.51
2	F	12	ARG	CA-C	-5.04	1.39	1.52
2	D	12	ARG	CA-C	-5.03	1.39	1.52
1	B	421	GLY	CA-C	-5.02	1.43	1.51
4	H	128	ARG	CA-C	-5.01	1.40	1.52

All (154) bond angle outliers are listed below:

Mol	Chain	Res	Type	Atoms	Z	Observed(°)	Ideal(°)
8	T	96	ARG	O-C-N	-14.33	99.77	122.70
8	T	92	PHE	C-N-CA	10.34	147.54	121.70
8	T	96	ARG	CA-C-N	10.23	139.70	117.20
7	S	71	ASP	C-N-CA	9.34	145.06	121.70
8	T	103	LEU	CA-C-O	-9.06	101.07	120.10
1	A	35	GLY	N-CA-C	-8.49	91.87	113.10
2	F	256	ASP	N-CA-C	-7.86	89.79	111.00
7	S	72	MET	C-N-CA	7.73	141.03	121.70
2	D	16	VAL	N-CA-C	-7.71	90.17	111.00
3	G	268	GLY	N-CA-C	-7.69	93.88	113.10
1	C	35	GLY	N-CA-C	-7.62	94.06	113.10
7	S	157	SER	N-CA-C	-7.61	90.45	111.00
2	F	345	TYR	N-CA-C	-7.47	90.83	111.00
2	F	83	ARG	N-CA-C	-7.29	91.32	111.00
2	E	54	GLY	N-CA-C	-7.20	95.09	113.10
7	S	107	THR	CA-C-N	7.20	133.05	117.20
2	E	355	SER	N-CA-C	-7.17	91.64	111.00
8	T	96	ARG	N-CA-C	-7.13	91.74	111.00
2	D	349	ASP	N-CA-C	-6.98	92.16	111.00
2	D	17	ILE	N-CA-C	-6.79	92.68	111.00
2	E	461	GLY	N-CA-C	-6.79	96.13	113.10
2	D	207	ASN	N-CA-C	-6.73	92.83	111.00
2	F	17	ILE	N-CA-C	-6.71	92.87	111.00
1	B	430	GLN	N-CA-C	-6.67	92.99	111.00
2	D	449	TYR	N-CA-C	-6.65	93.04	111.00

Continued on next page...

Continued from previous page...

Mol	Chain	Res	Type	Atoms	Z	Observed(°)	Ideal(°)
4	H	93	LEU	N-CA-C	-6.60	93.17	111.00
8	T	104	GLU	N-CA-C	6.58	128.76	111.00
3	G	171	TYR	N-CA-C	-6.56	93.30	111.00
1	B	38	ILE	N-CA-C	-6.52	93.39	111.00
1	A	330	GLN	N-CA-C	-6.50	93.46	111.00
1	A	41	VAL	N-CA-C	-6.49	93.49	111.00
2	D	57	THR	CA-C-N	-6.44	103.03	117.20
1	A	24	ASP	N-CA-C	-6.36	93.82	111.00
5	I	39	GLY	N-CA-C	-6.35	97.22	113.10
1	B	35	GLY	N-CA-C	-6.33	97.28	113.10
2	D	112	GLN	N-CA-C	-6.32	93.93	111.00
2	F	304	ILE	N-CA-C	-6.31	93.97	111.00
1	B	360	GLY	N-CA-C	-6.24	97.50	113.10
3	G	105	ILE	N-CA-C	-6.23	94.19	111.00
2	D	57	THR	N-CA-C	-6.19	94.28	111.00
1	A	174	GLY	N-CA-C	-6.18	97.64	113.10
2	D	20	VAL	N-CA-C	-6.17	94.35	111.00
3	G	197	ASP	N-CA-C	6.15	127.60	111.00
2	F	84	ILE	N-CA-C	-6.14	94.42	111.00
7	S	70	SER	C-N-CA	6.14	137.05	121.70
2	F	450	ASP	N-CA-C	-6.12	94.48	111.00
4	H	54	THR	N-CA-C	-6.09	94.55	111.00
8	T	93	ASP	O-C-N	-6.02	113.06	122.70
2	E	52	HIS	N-CA-C	-6.00	94.81	111.00
1	C	353	GLU	C-N-CA	5.99	136.67	121.70
2	D	22	ASP	N-CA-C	-5.94	94.95	111.00
2	E	57	THR	N-CA-C	-5.92	95.02	111.00
3	G	51	LEU	N-CA-C	-5.90	95.06	111.00
2	D	41	ARG	C-N-CA	5.89	136.43	121.70
5	I	8	GLY	N-CA-C	-5.89	98.39	113.10
7	S	122	THR	N-CA-C	5.87	126.85	111.00
3	G	93	ALA	N-CA-C	5.85	126.81	111.00
2	E	145	PRO	N-CA-C	-5.85	96.90	112.10
2	E	118	ALA	N-CA-C	-5.82	95.28	111.00
1	B	88	VAL	N-CA-C	-5.82	95.29	111.00
2	F	257	ASN	N-CA-C	-5.81	95.30	111.00
1	A	289	PRO	N-CA-C	-5.79	97.05	112.10
2	D	218	VAL	N-CA-C	-5.79	95.37	111.00
7	S	121	THR	C-N-CA	5.77	136.12	121.70
2	D	345	TYR	N-CA-C	-5.74	95.50	111.00
2	D	157	GLY	C-N-CA	5.72	135.99	121.70
4	H	76	PHE	N-CA-C	-5.71	95.59	111.00

Continued on next page...

Continued from previous page...

Mol	Chain	Res	Type	Atoms	Z	Observed(°)	Ideal(°)
1	B	506	ALA	C-N-CA	5.70	134.26	122.30
2	F	24	GLN	N-CA-C	-5.69	95.64	111.00
2	D	83	ARG	N-CA-C	-5.69	95.65	111.00
1	C	321	LEU	N-CA-C	-5.67	95.68	111.00
8	T	96	ARG	C-N-CA	5.65	135.82	121.70
7	S	76	GLU	C-N-CA	5.64	135.81	121.70
1	A	44	LEU	C-N-CA	5.63	135.78	121.70
2	E	218	VAL	N-CA-C	-5.63	95.80	111.00
1	A	290	GLY	N-CA-C	-5.62	99.04	113.10
1	B	140	ILE	N-CA-C	-5.62	95.83	111.00
1	C	488	LYS	N-CA-C	-5.61	95.84	111.00
1	A	172	GLN	CA-C-N	-5.59	104.90	117.20
1	B	237	SER	C-N-CA	5.58	135.66	121.70
4	H	61	GLY	N-CA-C	-5.56	99.21	113.10
2	D	54	GLY	N-CA-C	-5.55	99.21	113.10
2	E	47	LEU	N-CA-C	-5.55	96.01	111.00
2	F	20	VAL	N-CA-C	-5.55	96.01	111.00
1	A	313	ASN	C-N-CA	5.54	135.55	121.70
2	F	16	VAL	N-CA-C	-5.53	96.07	111.00
2	D	25	PHE	N-CA-C	-5.52	96.10	111.00
2	E	446	ALA	C-N-CA	5.52	133.89	122.30
3	G	154	GLU	CA-C-N	-5.52	105.06	117.20
1	C	88	VAL	N-CA-C	-5.50	96.14	111.00
1	B	77	GLY	N-CA-C	-5.50	99.35	113.10
3	G	70	GLY	N-CA-C	-5.50	99.35	113.10
1	C	29	GLY	N-CA-C	-5.49	99.37	113.10
1	C	372	SER	N-CA-C	-5.48	96.21	111.00
1	C	61	GLY	N-CA-C	-5.47	99.42	113.10
1	A	372	SER	N-CA-C	-5.47	96.23	111.00
1	C	39	ALA	N-CA-C	-5.47	96.24	111.00
2	D	59	ARG	N-CA-C	-5.46	96.25	111.00
4	H	32	ASN	C-N-CA	5.45	135.31	121.70
2	E	345	TYR	N-CA-C	-5.44	96.32	111.00
1	C	172	GLN	CA-C-N	-5.43	105.24	117.20
1	C	263	HIS	N-CA-C	-5.43	96.33	111.00
1	C	146	MET	N-CA-C	-5.42	96.37	111.00
1	B	175	LYS	CA-C-N	-5.42	105.28	117.20
4	H	77	VAL	N-CA-C	-5.41	96.40	111.00
1	B	488	LYS	N-CA-C	-5.39	96.44	111.00
3	G	167	SER	N-CA-C	-5.38	96.48	111.00
7	S	111	VAL	N-CA-C	-5.38	96.48	111.00
2	D	21	VAL	N-CA-C	-5.34	96.57	111.00

Continued on next page...

Continued from previous page...

Mol	Chain	Res	Type	Atoms	Z	Observed(°)	Ideal(°)
1	C	313	ASN	C-N-CA	5.34	135.05	121.70
1	A	321	LEU	N-CA-C	-5.34	96.58	111.00
7	S	150	LEU	C-N-CA	5.33	135.03	121.70
8	T	93	ASP	N-CA-C	-5.32	96.64	111.00
2	D	416	GLN	N-CA-C	-5.32	96.64	111.00
1	A	150	ILE	N-CA-C	-5.30	96.70	111.00
1	A	510	ALA	N-CA-C	-5.30	96.70	111.00
3	G	270	ALA	N-CA-C	-5.29	96.70	111.00
2	E	418	PHE	C-N-CA	5.29	134.93	121.70
3	G	267	SER	CA-C-N	-5.26	105.68	116.20
2	D	399	GLU	N-CA-C	-5.25	96.82	111.00
2	F	21	VAL	N-CA-C	-5.25	96.83	111.00
1	C	411	ASP	N-CA-C	-5.25	96.84	111.00
1	C	509	GLU	N-CA-C	-5.25	96.84	111.00
2	D	110	THR	C-N-CA	5.23	134.79	121.70
1	A	67	GLU	N-CA-C	-5.21	96.93	111.00
1	A	113	ASN	N-CA-C	-5.21	96.94	111.00
3	G	129	LYS	N-CA-C	-5.20	96.96	111.00
3	G	134	ARG	N-CA-C	-5.20	96.97	111.00
1	B	198	LYS	N-CA-C	-5.19	96.99	111.00
2	F	207	ASN	N-CA-C	-5.18	97.00	111.00
7	S	47	LYS	N-CA-C	5.18	124.99	111.00
11	W	148	SER	CA-C-O	-5.17	109.23	120.10
2	F	25	PHE	CA-C-N	-5.16	105.84	117.20
1	C	28	THR	N-CA-C	-5.14	97.12	111.00
2	E	182	VAL	N-CA-C	-5.13	97.15	111.00
1	A	96	ASP	N-CA-C	-5.12	97.16	111.00
2	E	331	ALA	N-CA-C	-5.12	97.19	111.00
1	B	313	ASN	C-N-CA	5.11	134.49	121.70
1	B	127	ARG	N-CA-C	-5.08	97.28	111.00
1	C	80	LYS	C-N-CA	5.08	134.40	121.70
2	F	54	GLY	N-CA-C	-5.08	100.41	113.10
1	B	263	HIS	N-CA-C	-5.06	97.33	111.00
8	T	89	HIS	O-C-N	-5.06	114.60	122.70
1	C	406	PHE	N-CA-C	-5.06	97.34	111.00
1	B	61	GLY	N-CA-C	-5.05	100.48	113.10
2	E	59	ARG	N-CA-C	-5.04	97.38	111.00
3	G	204	TYR	N-CA-C	-5.04	97.38	111.00
7	S	50	LYS	C-N-CA	5.04	134.31	121.70
1	B	67	GLU	N-CA-C	-5.04	97.40	111.00
1	C	174	GLY	N-CA-C	-5.02	100.55	113.10
2	E	183	PHE	N-CA-C	-5.02	97.45	111.00

Continued on next page...

Continued from previous page...

Mol	Chain	Res	Type	Atoms	Z	Observed(°)	Ideal(°)
7	S	72	MET	N-CA-C	5.01	124.54	111.00
1	B	192	GLY	N-CA-C	-5.01	100.58	113.10
2	F	161	GLY	N-CA-C	-5.01	100.58	113.10

There are no chirality outliers.

All (58) planarity outliers are listed below:

Mol	Chain	Res	Type	Group
1	A	173	THR	Mainchain
1	B	375	GLY	Peptide
1	B	379	GLN	Peptide
2	D	160	VAL	Mainchain
2	D	57	THR	Mainchain
2	E	180	TYR	Mainchain
2	E	397	SER	Mainchain
2	E	433	PRO	Peptide
2	F	126	MET	Peptide
2	F	25	PHE	Mainchain
2	F	319	ASP	Peptide,Mainchain
2	F	329	LEU	Mainchain
3	G	112	ILE	Mainchain
3	G	154	GLU	Mainchain
3	G	53	GLU	Mainchain
4	H	59	ARG	Mainchain
5	I	38	SER	Peptide
7	S	148	LEU	Peptide
7	S	151	GLU	Peptide
7	S	152	VAL	Peptide
7	S	156	PRO	Peptide
7	S	157	SER	Mainchain
7	S	161	GLY	Mainchain
7	S	70	SER	Mainchain
7	S	73	THR	Peptide
7	S	96	THR	Mainchain
8	T	103	LEU	Mainchain
8	T	107	TYR	Mainchain
8	T	108	ARG	Mainchain
8	T	113	ARG	Mainchain
8	T	119	LYS	Mainchain
8	T	137	GLN	Mainchain
8	T	154	ALA	Peptide
8	T	155	GLN	Mainchain

Continued on next page...

Continued from previous page...

Mol	Chain	Res	Type	Group
8	T	158	LYS	Mainchain
8	T	173	LYS	Peptide
8	T	47	GLU	Peptide
8	T	63	VAL	Mainchain
8	T	86	GLN	Mainchain
8	T	89	HIS	Mainchain
8	T	93	ASP	Mainchain
8	T	96	ARG	Mainchain
8	T	97	ASN	Mainchain
9	U	120	ARG	Peptide
9	U	57	ASN	Peptide
10	V	20	ARG	Mainchain
10	V	29	PRO	Peptide
10	V	52	GLY	Mainchain
11	W	122	LYS	Mainchain
11	W	149	LEU	Mainchain
11	W	152	GLN	Mainchain
11	W	159	ARG	Mainchain
11	W	166	ALA	Mainchain
11	W	167	GLY	Mainchain
11	W	35	ASN	Peptide
11	W	63	SER	Mainchain
11	W	64	LYS	Mainchain

5.2 Too-close contacts [i](#)

In the following table, the Non-H and H(model) columns list the number of non-hydrogen atoms and hydrogen atoms in the chain respectively. The H(added) column lists the number of hydrogen atoms added and optimized by MolProbity. The Clashes column lists the number of clashes within the asymmetric unit, whereas Symm-Clashes lists symmetry-related clashes.

Mol	Chain	Non-H	H(model)	H(added)	Clashes	Symm-Clashes
1	A	2035	0	589	6	0
1	B	1918	0	553	2	0
1	C	1947	0	563	7	0
2	D	1867	0	533	8	0
2	E	1863	0	532	5	0
2	F	1863	0	532	7	0
3	G	1053	0	283	3	0
4	H	523	0	140	1	0
5	I	187	0	53	2	0
6	J	288	0	92	0	0

Continued on next page...

Continued from previous page...

Mol	Chain	Non-H	H(model)	H(added)	Clashes	Symm-Clashes
6	K	288	0	92	0	0
6	L	288	0	92	0	0
6	M	288	0	92	0	0
6	N	288	0	92	0	0
6	O	288	0	92	0	0
6	P	288	0	92	0	0
6	Q	288	0	92	0	0
7	S	669	0	179	17	0
8	T	697	0	182	9	0
9	U	484	0	121	9	0
10	V	264	0	68	0	0
11	W	869	0	226	2	0
All	All	18543	0	5290	74	0

The all-atom clashscore is defined as the number of clashes found per 1000 atoms (including hydrogen atoms). The all-atom clashscore for this structure is 3.

All (74) close contacts within the same asymmetric unit are listed below, sorted by their clash magnitude.

Atom-1	Atom-2	Interatomic distance (Å)	Clash overlap (Å)
8:T:93:ASP:CA	8:T:93:ASP:N	1.76	1.46
8:T:96:ARG:C	8:T:96:ARG:CA	1.88	1.40
7:S:163:ILE:O	7:S:167:GLY:O	1.76	1.03
3:G:267:SER:H	3:G:270:ALA:H	1.22	0.82
9:U:116:LEU:O	9:U:120:ARG:N	2.16	0.78
9:U:98:CYS:O	9:U:102:LEU:N	2.15	0.78
8:T:93:ASP:N	8:T:93:ASP:C	2.38	0.77
8:T:96:ARG:C	8:T:96:ARG:N	2.39	0.76
2:F:84:ILE:H	2:F:114:ALA:H	1.34	0.72
9:U:98:CYS:O	9:U:101:PHE:N	2.26	0.68
8:T:93:ASP:N	8:T:94:VAL:N	2.42	0.67
7:S:69:LEU:CA	7:S:72:MET:H	2.09	0.64
7:S:69:LEU:O	7:S:72:MET:N	2.31	0.62
7:S:107:THR:O	7:S:111:VAL:N	2.33	0.61
3:G:267:SER:H	3:G:270:ALA:N	1.97	0.61
2:D:84:ILE:H	2:D:114:ALA:H	1.47	0.61
7:S:68:SER:C	7:S:72:MET:H	2.06	0.58
9:U:98:CYS:O	9:U:99:ALA:C	2.43	0.56
7:S:69:LEU:O	7:S:73:THR:N	2.39	0.55
2:F:92:GLY:HA3	2:F:213:SER:H	1.71	0.55
8:T:66:ALA:O	9:U:119:MET:O	2.26	0.53

Continued on next page...

Continued from previous page...

Atom-1	Atom-2	Interatomic distance (Å)	Clash overlap (Å)
2:E:419:GLN:H	2:E:429:GLY:H	1.56	0.53
2:D:473:LEU:C	2:D:475:GLU:H	2.13	0.51
1:C:285:LEU:C	1:C:287:ARG:H	2.13	0.51
8:T:95:GLN:C	8:T:96:ARG:C	2.69	0.50
1:A:49:ALA:H	2:E:69:LEU:N	2.08	0.50
1:A:43:GLY:C	1:A:45:ARG:H	2.15	0.50
7:S:136:THR:C	7:S:138:LEU:H	2.15	0.50
1:C:172:GLN:C	1:C:174:GLY:H	2.16	0.49
1:C:258:ARG:O	1:C:319:GLY:HA3	2.14	0.48
2:E:419:GLN:N	2:E:429:GLY:H	2.11	0.48
1:C:398:ARG:C	1:C:401:ALA:H	2.17	0.48
7:S:108:MET:CA	7:S:111:VAL:O	2.62	0.48
2:E:417:PRO:O	2:E:429:GLY:HA2	2.14	0.47
1:B:260:ASN:C	1:B:262:LYS:H	2.17	0.47
4:H:80:GLY:HA3	4:H:95:GLU:H	1.79	0.47
7:S:69:LEU:C	7:S:71:ASP:N	2.67	0.47
2:D:419:GLN:CA	2:D:429:GLY:H	2.27	0.47
7:S:73:THR:C	7:S:75:LYS:H	2.17	0.47
1:B:49:ALA:H	2:F:69:LEU:N	2.13	0.47
1:A:258:ARG:O	1:A:319:GLY:HA3	2.15	0.46
7:S:105:PHE:O	7:S:108:MET:N	2.48	0.46
1:A:189:PHE:C	1:A:192:GLY:H	2.20	0.46
8:T:96:ARG:O	8:T:99:ILE:N	2.49	0.46
9:U:54:TYR:O	9:U:58:VAL:N	2.29	0.45
1:A:172:GLN:C	1:A:174:GLY:H	2.20	0.45
11:W:152:GLN:O	11:W:155:ALA:N	2.50	0.44
7:S:69:LEU:N	7:S:72:MET:H	2.16	0.44
7:S:28:LYS:C	7:S:30:ASN:H	2.21	0.43
7:S:13:GLY:C	7:S:15:GLU:H	2.21	0.43
1:C:189:PHE:C	1:C:192:GLY:H	2.22	0.43
11:W:156:LEU:O	11:W:160:LEU:N	2.51	0.43
9:U:90:GLU:O	9:U:94:ASP:N	2.49	0.43
5:I:4:TRP:C	5:I:7:ALA:H	2.22	0.43
5:I:6:GLN:C	5:I:8:GLY:H	2.21	0.42
7:S:69:LEU:CA	7:S:72:MET:N	2.80	0.42
3:G:51:LEU:C	3:G:54:LYS:H	2.23	0.42
7:S:105:PHE:O	7:S:108:MET:CA	2.68	0.42
8:T:66:ALA:C	9:U:119:MET:O	2.59	0.41
2:F:159:GLY:C	2:F:161:GLY:H	2.23	0.41
1:C:29:GLY:N	1:C:88:VAL:O	2.54	0.41
2:D:155:PHE:N	2:D:333:THR:O	2.53	0.41

Continued on next page...

Continued from previous page...

Atom-1	Atom-2	Interatomic distance (Å)	Clash overlap (Å)
2:F:35:ALA:H	2:F:80:ALA:C	2.23	0.41
1:C:504:PHE:O	1:C:508:PHE:N	2.53	0.41
2:D:13:ILE:O	2:D:72:GLY:N	2.50	0.41
2:D:425:THR:C	2:D:427:HIS:H	2.24	0.41
7:S:30:ASN:C	7:S:32:LEU:H	2.22	0.41
9:U:86:GLN:O	9:U:87:VAL:C	2.59	0.41
2:F:92:GLY:H	2:F:215:VAL:H	1.68	0.41
2:E:277:SER:H	2:E:283:PRO:N	2.19	0.40
2:D:197:TYR:C	2:D:200:MET:H	2.25	0.40
2:D:393:MET:C	2:D:395:GLU:H	2.23	0.40
1:A:346:THR:C	1:A:348:GLY:H	2.24	0.40
2:F:362:ILE:C	2:F:364:GLY:H	2.25	0.40

There are no symmetry-related clashes.

5.3 Torsion angles [i](#)

5.3.1 Protein backbone [i](#)

In the following table, the Percentiles column shows the percent Ramachandran outliers of the chain as a percentile score with respect to all PDB entries followed by that with respect to all EM entries.

The Analysed column shows the number of residues for which the backbone conformation was analysed, and the total number of residues.

Mol	Chain	Analysed	Favoured	Allowed	Outliers	Percentiles	
1	A	507/510 (99%)	451 (89%)	35 (7%)	21 (4%)	3	22
1	B	476/510 (93%)	424 (89%)	31 (6%)	21 (4%)	2	22
1	C	485/510 (95%)	440 (91%)	28 (6%)	17 (4%)	3	25
2	D	465/482 (96%)	417 (90%)	37 (8%)	11 (2%)	6	33
2	E	464/482 (96%)	416 (90%)	33 (7%)	15 (3%)	4	26
2	F	464/482 (96%)	410 (88%)	34 (7%)	20 (4%)	2	22
3	G	258/273 (94%)	196 (76%)	37 (14%)	25 (10%)	0	10
4	H	129/146 (88%)	111 (86%)	10 (8%)	8 (6%)	1	17
5	I	45/50 (90%)	35 (78%)	5 (11%)	5 (11%)	0	7
6	J	70/72 (97%)	62 (89%)	6 (9%)	2 (3%)	4	29

Continued on next page...

Continued from previous page...

Mol	Chain	Analysed	Favoured	Allowed	Outliers	Percentiles	
6	K	70/72 (97%)	64 (91%)	5 (7%)	1 (1%)	11	46
6	L	70/72 (97%)	57 (81%)	13 (19%)	0	100	100
6	M	70/72 (97%)	64 (91%)	4 (6%)	2 (3%)	4	29
6	N	70/72 (97%)	61 (87%)	9 (13%)	0	100	100
6	O	70/72 (97%)	64 (91%)	5 (7%)	1 (1%)	11	46
6	P	70/72 (97%)	64 (91%)	5 (7%)	1 (1%)	11	46
6	Q	70/72 (97%)	61 (87%)	7 (10%)	2 (3%)	4	29
7	S	166/190 (87%)	112 (68%)	26 (16%)	28 (17%)	0	3
8	T	172/174 (99%)	153 (89%)	17 (10%)	2 (1%)	13	50
9	U	119/124 (96%)	97 (82%)	15 (13%)	7 (6%)	1	17
10	V	64/77 (83%)	50 (78%)	10 (16%)	4 (6%)	1	17
11	W	215/217 (99%)	187 (87%)	23 (11%)	5 (2%)	6	34
All	All	4589/4803 (96%)	3996 (87%)	395 (9%)	198 (4%)	5	22

All (198) Ramachandran outliers are listed below:

Mol	Chain	Res	Type
1	A	13	GLU
1	A	14	GLU
1	A	45	ARG
1	A	47	VAL
1	A	171	ARG
1	A	289	PRO
1	A	374	VAL
1	A	435	PRO
1	B	57	SER
1	B	59	LEU
1	B	80	LYS
1	B	143	ARG
1	B	224	ASP
1	B	238	ASP
1	B	289	PRO
1	B	346	THR
1	B	361	ILE
1	B	365	ILE
1	B	378	ALA
1	C	47	VAL
1	C	80	LYS

Continued on next page...

Continued from previous page...

Mol	Chain	Res	Type
1	C	121	ILE
1	C	146	MET
1	C	289	PRO
1	C	361	ILE
1	C	488	LYS
2	D	277	SER
2	D	281	TYR
2	D	450	ASP
2	D	451	HIS
2	E	249	GLN
2	E	282	GLN
2	E	348	VAL
2	E	395	GLU
2	E	447	GLY
2	F	213	SER
2	F	277	SER
2	F	450	ASP
2	F	451	HIS
3	G	73	SER
3	G	93	ALA
3	G	118	ARG
3	G	134	ARG
3	G	196	ILE
3	G	197	ASP
3	G	199	ASP
3	G	250	PHE
3	G	257	VAL
4	H	45	PHE
4	H	69	ASP
4	H	101	ASP
5	I	28	THR
5	I	42	ILE
7	S	2	ALA
7	S	47	LYS
7	S	52	ALA
7	S	108	MET
7	S	112	HIS
7	S	113	ARG
7	S	118	CYS
7	S	122	THR
7	S	124	SER
7	S	142	LEU

Continued on next page...

Continued from previous page...

Mol	Chain	Res	Type
7	S	151	GLU
7	S	153	LYS
8	T	149	VAL
10	V	54	ALA
10	V	60	PRO
11	W	152	GLN
1	A	11	ILE
1	A	24	ASP
1	A	116	ASP
1	A	163	GLN
1	A	172	GLN
1	A	224	ASP
1	B	114	ALA
1	B	115	ILE
1	B	505	LEU
1	B	508	PHE
1	C	172	GLN
1	C	224	ASP
1	C	238	ASP
2	D	67	GLU
2	D	93	ARG
2	E	73	GLN
2	E	102	ILE
2	E	132	ILE
2	E	213	SER
2	E	297	THR
2	E	392	GLY
2	F	82	ILE
2	F	282	GLN
2	F	419	GLN
3	G	9	ARG
3	G	87	LYS
3	G	114	SER
3	G	122	ASP
3	G	157	GLU
3	G	187	ALA
3	G	200	VAL
4	H	68	GLU
7	S	8	PRO
7	S	50	LYS
7	S	77	LYS
7	S	123	ALA

Continued on next page...

Continued from previous page...

Mol	Chain	Res	Type
9	U	49	ILE
9	U	98	CYS
10	V	30	VAL
10	V	31	ASP
1	A	411	ASP
1	B	82	ILE
1	B	286	ARG
1	B	430	GLN
1	C	171	ARG
2	D	348	VAL
2	E	391	LEU
2	F	31	PRO
2	F	223	ASN
2	F	317	LEU
3	G	92	GLU
3	G	116	LEU
3	G	272	LEU
4	H	51	HIS
4	H	123	ALA
4	H	124	ASP
5	I	26	LEU
6	J	45	GLN
7	S	14	ILE
7	S	55	LEU
7	S	68	SER
7	S	155	ASP
9	U	82	LYS
9	U	99	ALA
11	W	40	ASN
1	A	6	ALA
1	A	18	GLY
1	A	79	ASP
1	B	287	ARG
1	B	375	GLY
1	C	235	THR
2	D	210	ASP
2	F	67	GLU
2	F	297	THR
2	F	364	GLY
3	G	88	GLN
3	G	201	LEU
5	I	9	LEU

Continued on next page...

Continued from previous page...

Mol	Chain	Res	Type
6	P	40	PRO
6	Q	44	GLN
7	S	11	ILE
7	S	92	ASN
7	S	107	THR
7	S	137	VAL
8	T	171	LEU
9	U	84	THR
9	U	87	VAL
11	W	36	ARG
11	W	92	PHE
11	W	153	PRO
1	A	44	LEU
1	A	336	ALA
2	D	44	ARG
2	E	359	ASP
2	F	157	GLY
2	F	176	ALA
3	G	133	ARG
3	G	150	ASN
3	G	258	ILE
3	G	269	ALA
6	O	39	ASN
7	S	9	VAL
7	S	49	PRO
7	S	61	LYS
7	S	120	VAL
9	U	13	PHE
1	A	209	LYS
1	C	435	PRO
2	D	279	VAL
2	F	359	ASP
2	F	363	VAL
5	I	44	ILE
1	C	115	ILE
1	C	288	PRO
2	E	279	VAL
2	F	160	VAL
2	F	279	VAL
6	M	40	PRO
1	B	334	VAL
1	C	144	GLU

Continued on next page...

Continued from previous page...

Mol	Chain	Res	Type
2	E	453	PRO
4	H	52	VAL
6	J	40	PRO
1	C	145	PRO
2	D	359	ASP
2	F	420	VAL
6	M	71	ILE
6	K	40	PRO
6	Q	40	PRO

5.3.2 Protein sidechains [i](#)

There are no protein residues with a non-rotameric sidechain to report in this entry.

5.3.3 RNA [i](#)

There are no RNA molecules in this entry.

5.4 Non-standard residues in protein, DNA, RNA chains [i](#)

There are no non-standard protein/DNA/RNA residues in this entry.

5.5 Carbohydrates [i](#)

There are no monosaccharides in this entry.

5.6 Ligand geometry [i](#)

There are no ligands in this entry.

5.7 Other polymers [i](#)

There are no such residues in this entry.

5.8 Polymer linkage issues [i](#)

There are no chain breaks in this entry.

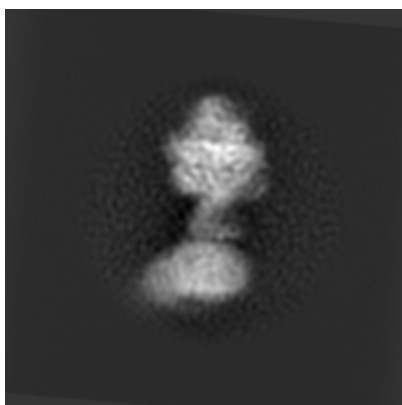
6 Map visualisation [i](#)

This section contains visualisations of the EMDB entry EMD-3168. These allow visual inspection of the internal detail of the map and identification of artifacts.

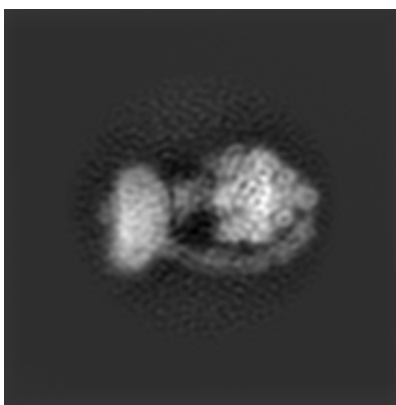
No raw map or half-maps were deposited for this entry and therefore no images, graphs, etc. pertaining to the raw map can be shown.

6.1 Orthogonal projections [i](#)

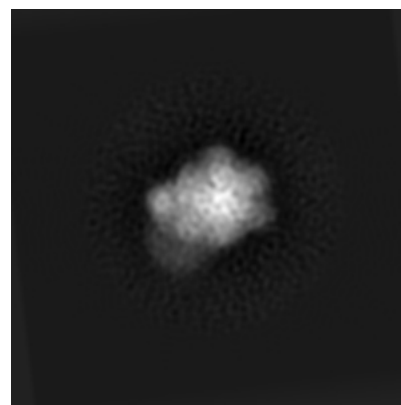
6.1.1 Primary map



X



Y

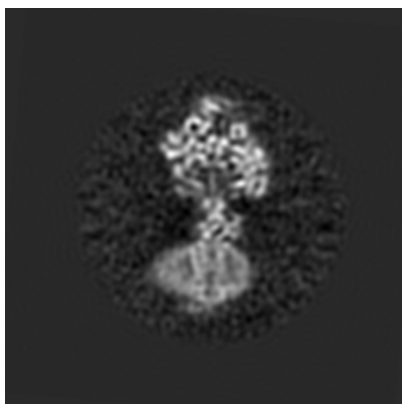


Z

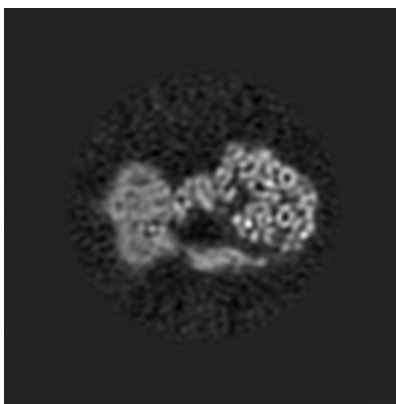
The images above show the map projected in three orthogonal directions.

6.2 Central slices [i](#)

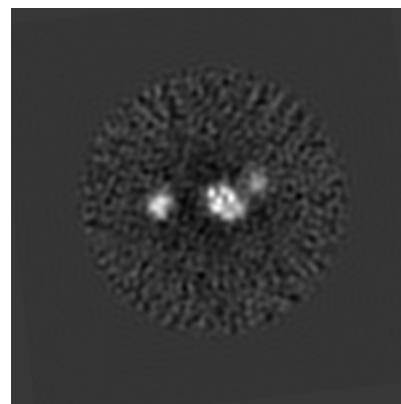
6.2.1 Primary map



X Index: 128



Y Index: 128

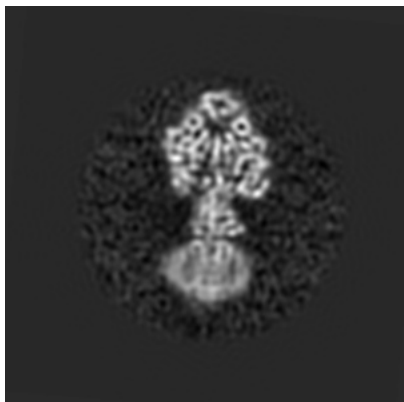


Z Index: 128

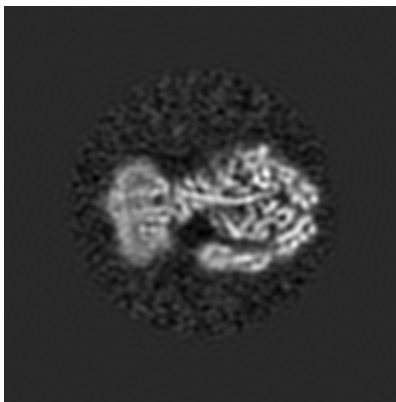
The images above show central slices of the map in three orthogonal directions.

6.3 Largest variance slices [i](#)

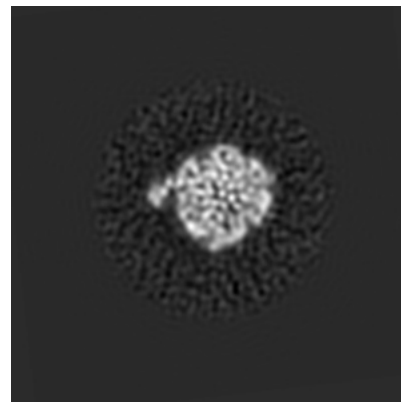
6.3.1 Primary map



X Index: 134



Y Index: 133



Z Index: 166

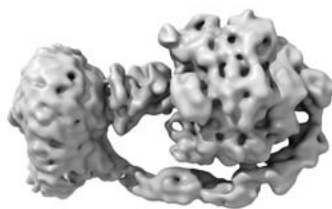
The images above show the largest variance slices of the map in three orthogonal directions.

6.4 Orthogonal surface views [i](#)

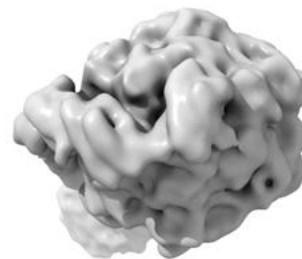
6.4.1 Primary map



X



Y



Z

The images above show the 3D surface view of the map at the recommended contour level 0.13. These images, in conjunction with the slice images, may facilitate assessment of whether an appropriate contour level has been provided.

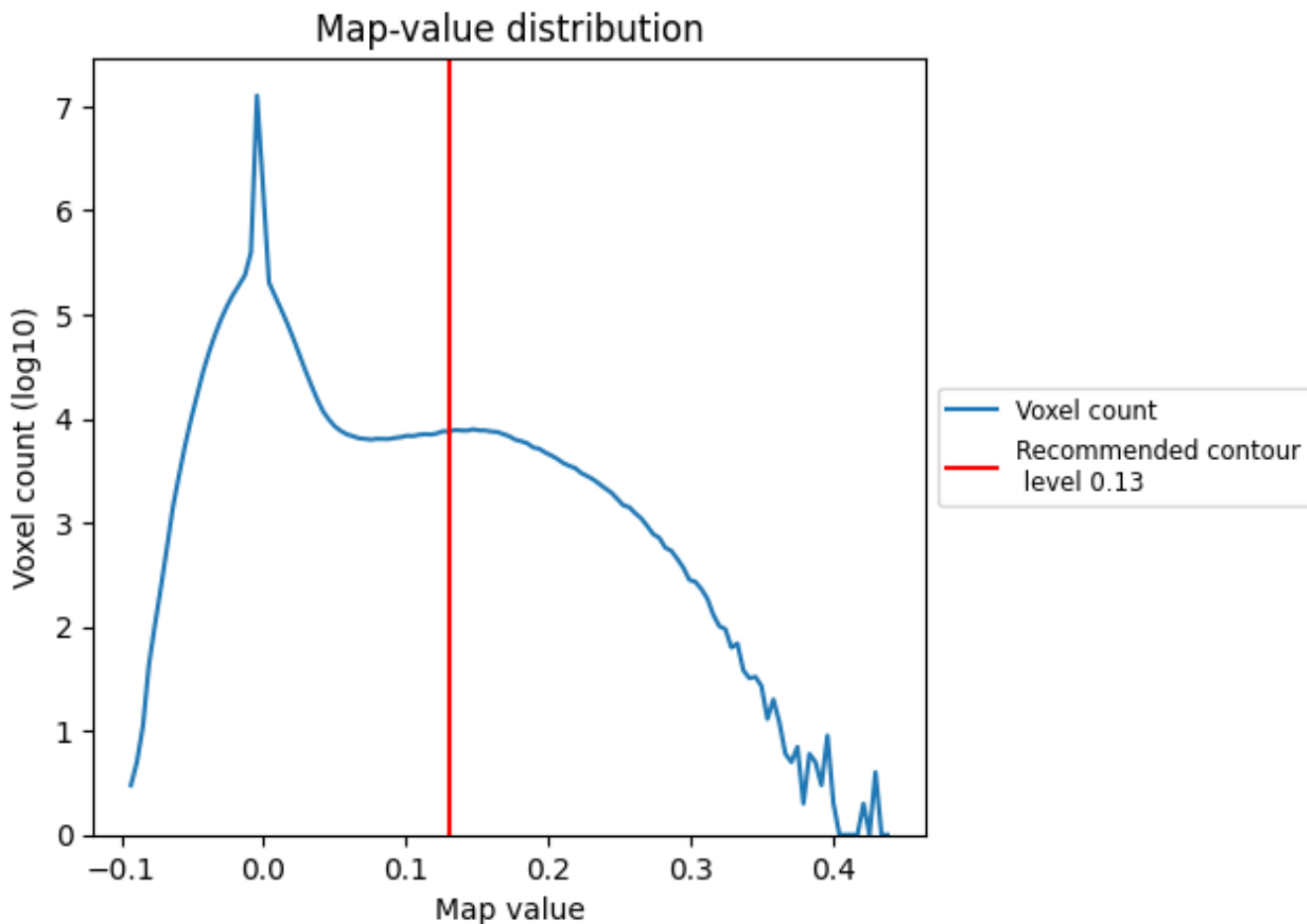
6.5 Mask visualisation

This section was not generated. No masks/segmentation were deposited.

7 Map analysis [i](#)

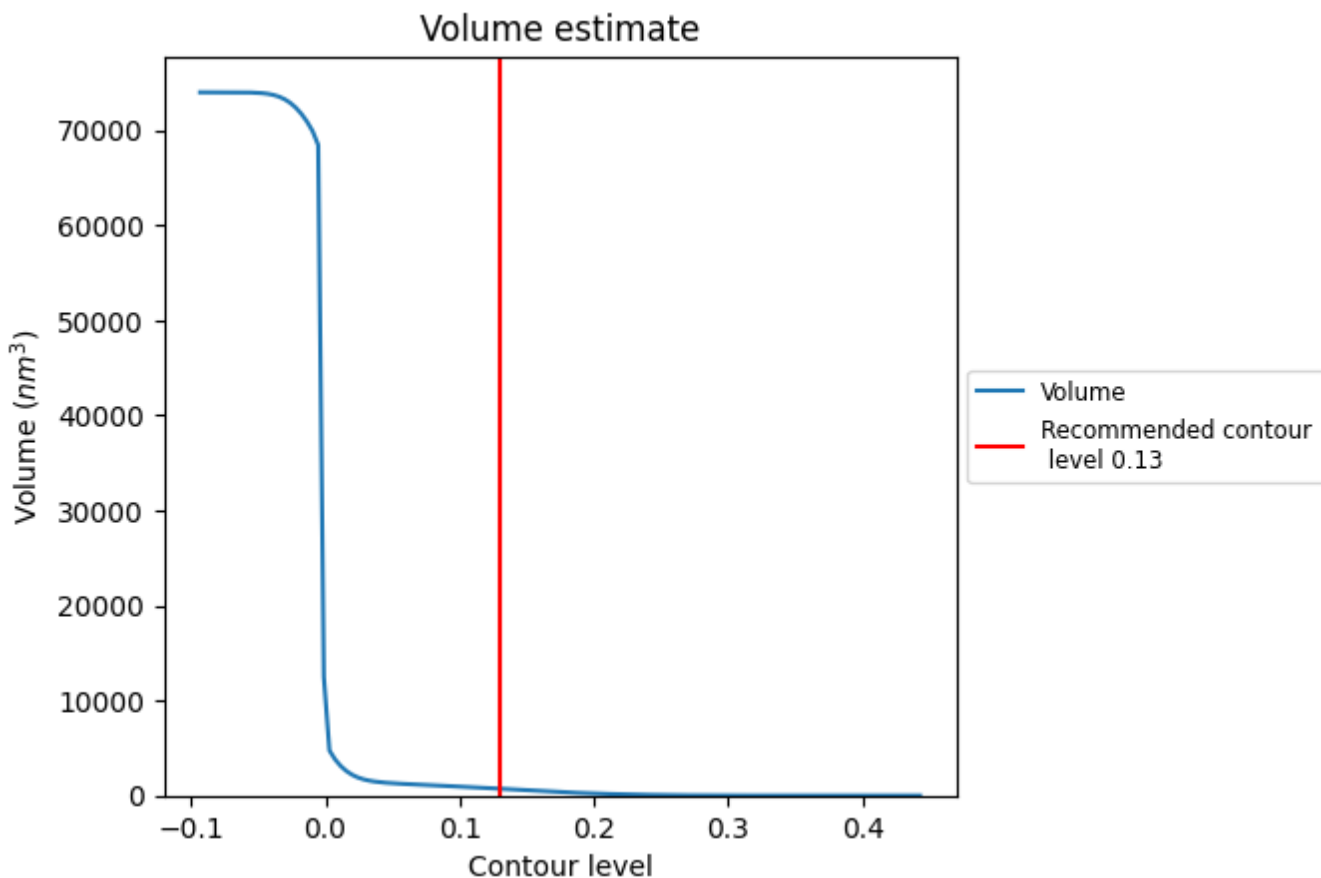
This section contains the results of statistical analysis of the map.

7.1 Map-value distribution [i](#)



The map-value distribution is plotted in 128 intervals along the x-axis. The y-axis is logarithmic. A spike in this graph at zero usually indicates that the volume has been masked.

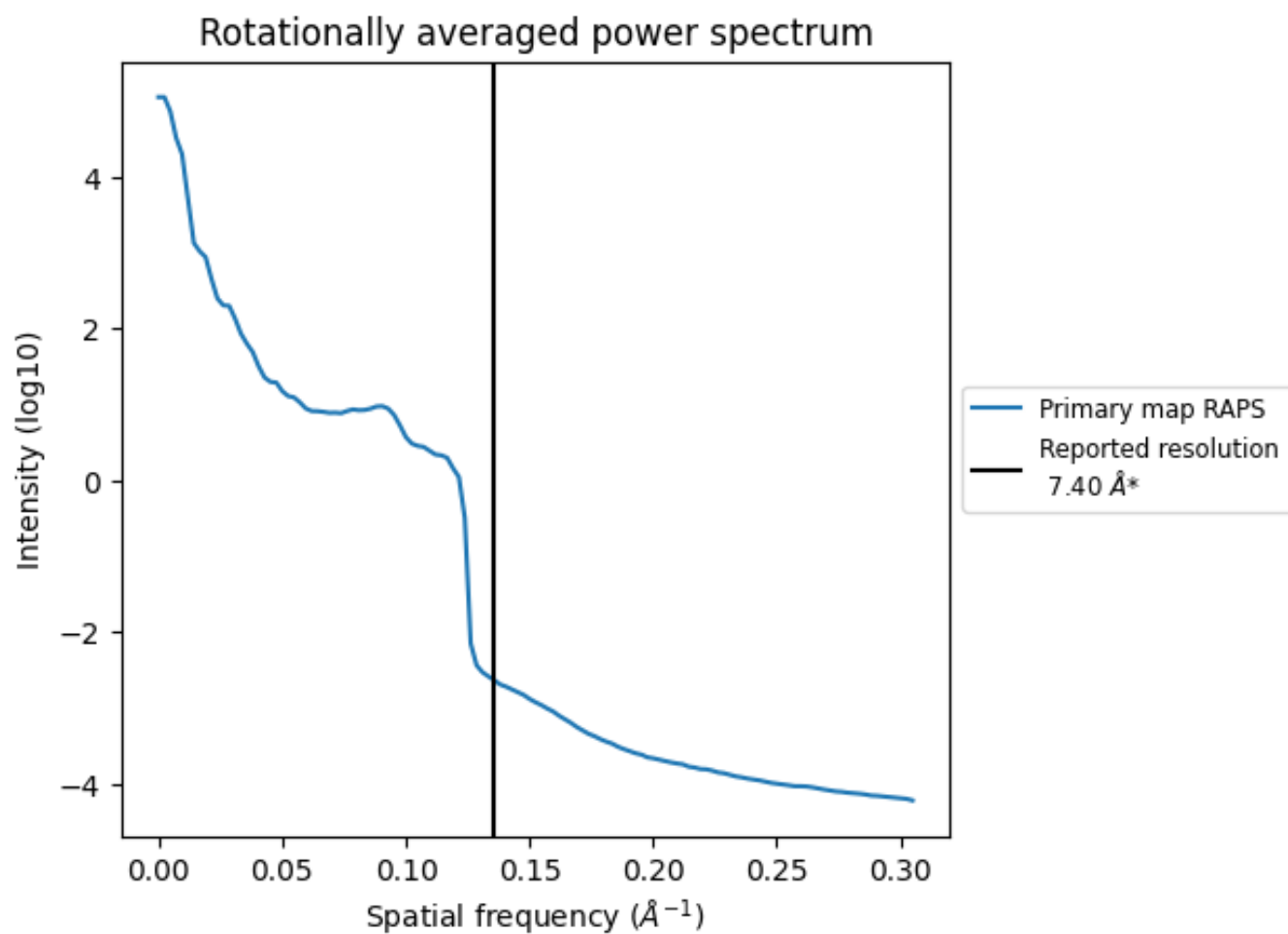
7.2 Volume estimate [i](#)



The volume at the recommended contour level is 722 nm³; this corresponds to an approximate mass of 652 kDa.

The volume estimate graph shows how the enclosed volume varies with the contour level. The recommended contour level is shown as a vertical line and the intersection between the line and the curve gives the volume of the enclosed surface at the given level.

7.3 Rotationally averaged power spectrum [i](#)



*Reported resolution corresponds to spatial frequency of 0.135\AA^{-1}

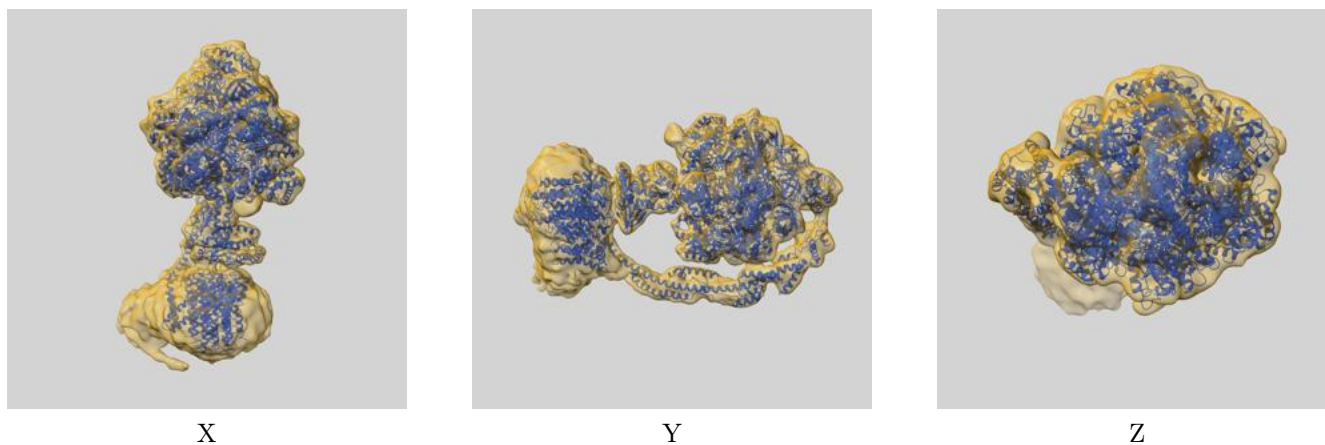
8 Fourier-Shell correlation

This section was not generated. No FSC curve or half-maps provided.

9 Map-model fit [i](#)

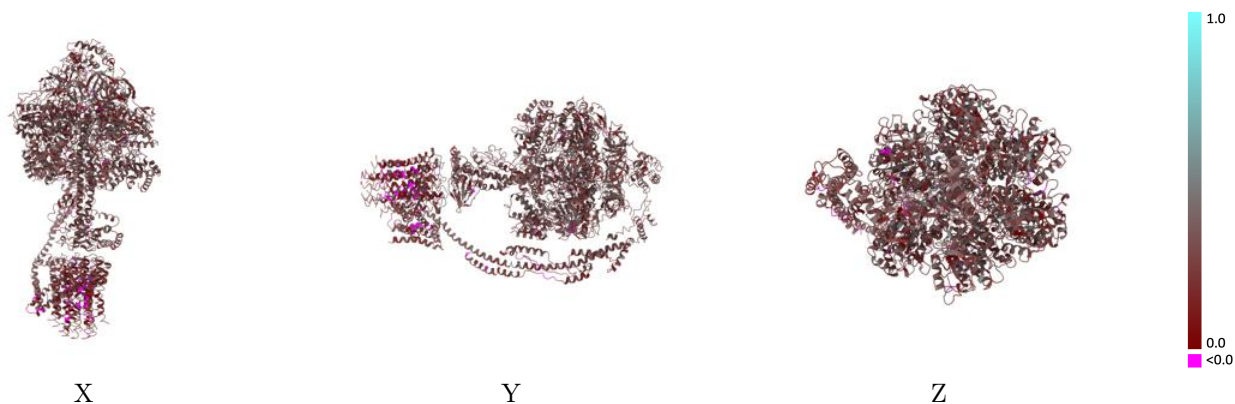
This section contains information regarding the fit between EMDB map EMD-3168 and PDB model 5FIJ. Per-residue inclusion information can be found in section 3 on page 7.

9.1 Map-model overlay [i](#)



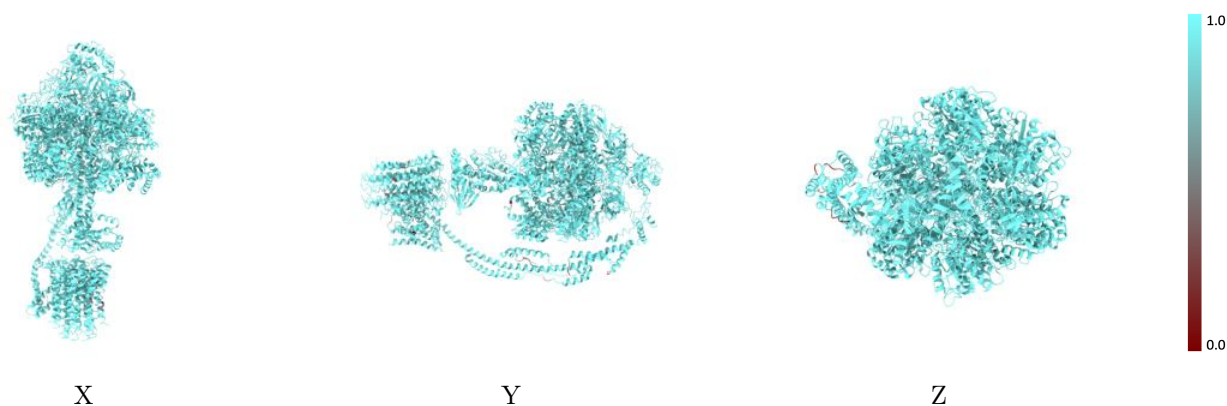
The images above show the 3D surface view of the map at the recommended contour level 0.13 at 50% transparency in yellow overlaid with a ribbon representation of the model coloured in blue. These images allow for the visual assessment of the quality of fit between the atomic model and the map.

9.2 Q-score mapped to coordinate model [i](#)



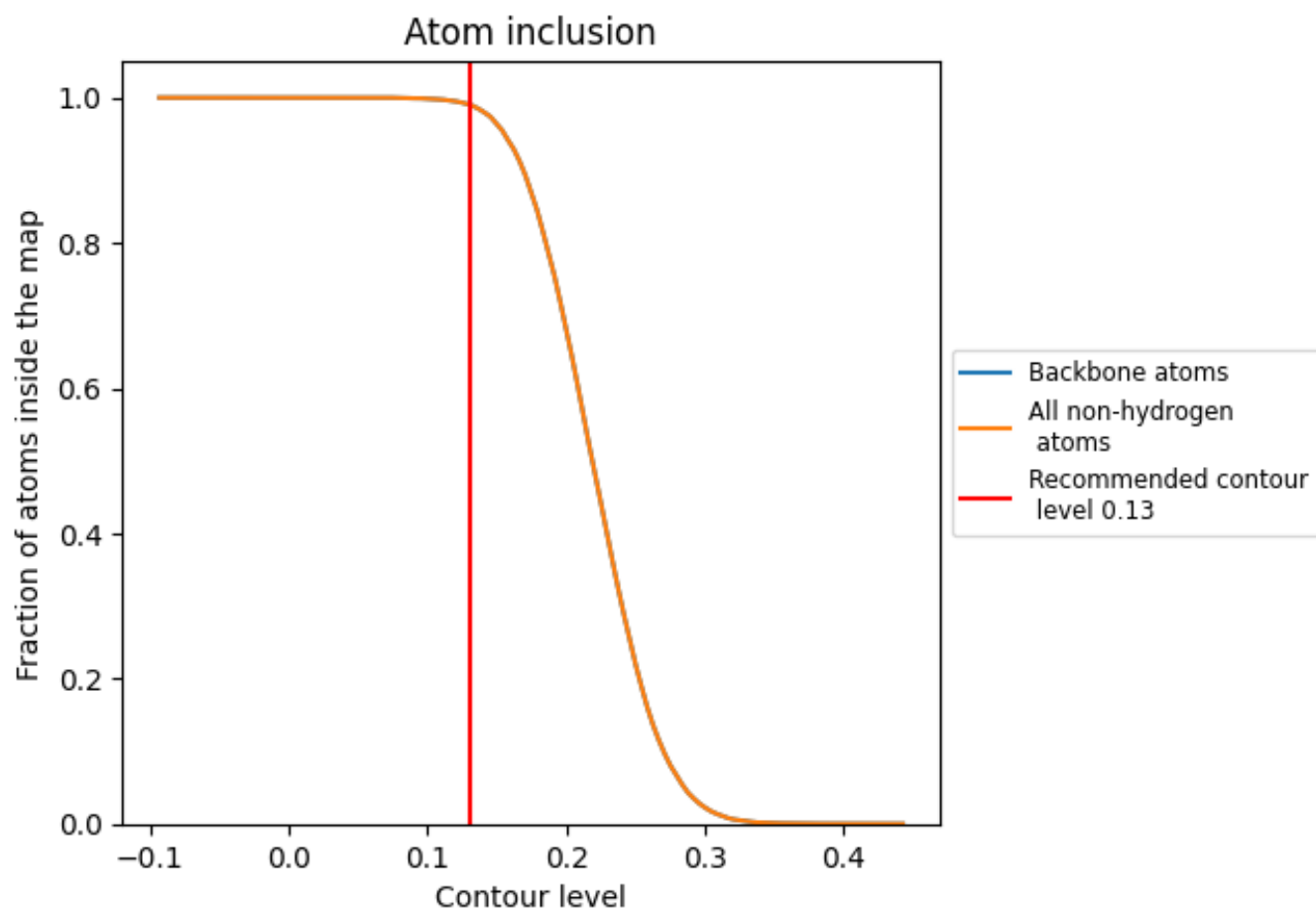
The images above show the model with each residue coloured according to its Q-score. This shows their resolvability in the map with higher Q-score values reflecting better resolvability. Please note: Q-score is calculating the resolvability of atoms, and thus high values are only expected at resolutions at which atoms can be resolved. Low Q-score values may therefore be expected for many entries.

9.3 Atom inclusion mapped to coordinate model [i](#)



The images above show the model with each residue coloured according to its atom inclusion. This shows to what extent they are inside the map at the recommended contour level (0.13).



















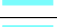



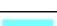

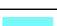





















9.4 Atom inclusion [i](#)



At the recommended contour level, 99% of all backbone atoms, 99% of all non-hydrogen atoms, are inside the map.

9.5 Map-model fit summary

The table lists the average atom inclusion at the recommended contour level (0.13) and Q-score for the entire model and for each chain.

Chain	Atom inclusion	Q-score
All	 0.9906	 0.2700
A	 0.9946	 0.2830
B	 0.9995	 0.2940
C	 0.9928	 0.2900
D	 1.0000	 0.2960
E	 0.9995	 0.2900
F	 0.9973	 0.2930
G	 1.0000	 0.2960
H	 0.9962	 0.2980
I	 0.9893	 0.3010
J	 0.9931	 0.2020
K	 0.9792	 0.1760
L	 1.0000	 0.2130
M	 0.9757	 0.1500
N	 0.9722	 0.1930
O	 0.9410	 0.1500
P	 1.0000	 0.2010
Q	 0.9931	 0.1700
S	 1.0000	 0.3010
T	 0.9943	 0.2920
U	 0.9256	 0.2130
V	 0.9242	 0.2250
W	 0.9586	 0.1840

