



Full wwPDB X-ray Structure Validation Report ⓘ

May 14, 2020 – 06:30 am BST

PDB ID : 2FLR
Title : Novel 5-Azaindole Factor VIIa Inhibitors
Authors : Riggs, J.R.; Hu, H.; Kolesnikov, A.; Tong, Z.; Leahy, E.M.; Wesson, K.E.;
Shrader, W.D.; Vijaykumar, D.; Wahl, T.A.; Sprengeler, P.A.; Green, M.J.;
Yu, C.; Katz, B.A.; Young, W.B.
Deposited on : 2006-01-06
Resolution : 2.35 Å(reported)

This is a Full wwPDB X-ray Structure Validation Report for a publicly released PDB entry.

We welcome your comments at validation@mail.wwpdb.org

A user guide is available at

<https://www.wwpdb.org/validation/2017/XrayValidationReportHelp>

with specific help available everywhere you see the ⓘ symbol.

The following versions of software and data (see [references ⓘ](#)) were used in the production of this report:

MolProbity : 4.02b-467
Mogul : 1.8.5 (274361), CSD as541be (2020)
Xtriage (Phenix) : 1.13
EDS : 2.11
buster-report : 1.1.7 (2018)
Percentile statistics : 20191225.v01 (using entries in the PDB archive December 25th 2019)
Refmac : 5.8.0158
CCP4 : 7.0.044 (Gargrove)
Ideal geometry (proteins) : Engh & Huber (2001)
Ideal geometry (DNA, RNA) : Parkinson et al. (1996)
Validation Pipeline (wwPDB-VP) : 2.11

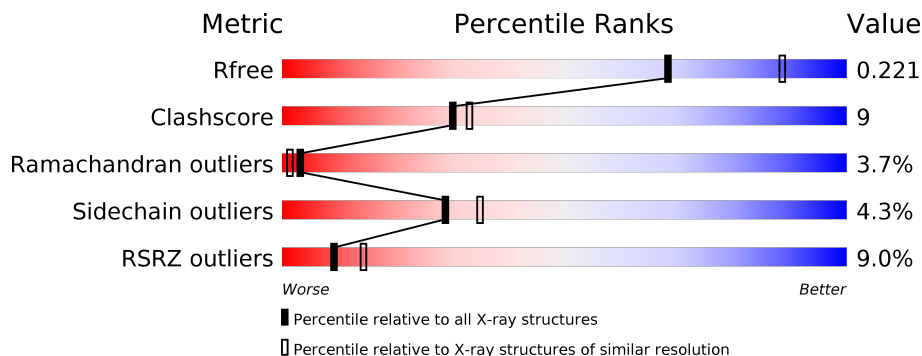
1 Overall quality at a glance

The following experimental techniques were used to determine the structure:

X-RAY DIFFRACTION

The reported resolution of this entry is 2.35 Å.

Percentile scores (ranging between 0-100) for global validation metrics of the entry are shown in the following graphic. The table shows the number of entries on which the scores are based.



Metric	Whole archive (#Entries)	Similar resolution (#Entries, resolution range(Å))
R_{free}	130704	1164 (2.36-2.36)
Clashscore	141614	1232 (2.36-2.36)
Ramachandran outliers	138981	1211 (2.36-2.36)
Sidechain outliers	138945	1212 (2.36-2.36)
RSRZ outliers	127900	1150 (2.36-2.36)

The table below summarises the geometric issues observed across the polymeric chains and their fit to the electron density. The red, orange, yellow and green segments on the lower bar indicate the fraction of residues that contain outliers for ≥ 3 , 2, 1 and 0 types of geometric quality criteria respectively. A grey segment represents the fraction of residues that are not modelled. The numeric value for each fraction is indicated below the corresponding segment, with a dot representing fractions $\leq 5\%$. The upper red bar (where present) indicates the fraction of residues that have poor fit to the electron density. The numeric value is given above the bar.

Mol	Chain	Length	Quality of chain
1	L	152	 5% 43% 16% 37%
2	H	254	 6% 73% 21% 5%
3	T	218	 11% 48% 18% 31%

2 Entry composition [i](#)

There are 5 unique types of molecules in this entry. The entry contains 4325 atoms, of which 0 are hydrogens and 0 are deuteriums.

In the tables below, the ZeroOcc column contains the number of atoms modelled with zero occupancy, the AltConf column contains the number of residues with at least one atom in alternate conformation and the Trace column contains the number of residues modelled with at most 2 atoms.

- Molecule 1 is a protein called Coagulation factor VII.

Mol	Chain	Residues	Atoms					ZeroOcc	AltConf	Trace
			Total	C	N	O	S			
1	L	96	727	439	126	149	13	0	2	0

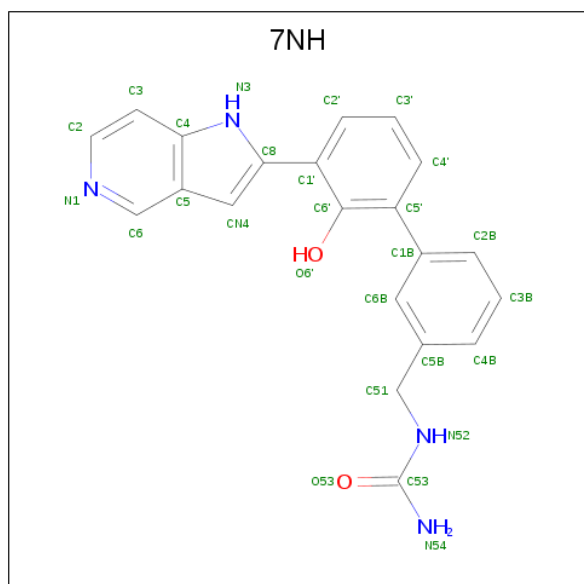
- Molecule 2 is a protein called Coagulation factor VII.

Mol	Chain	Residues	Atoms					ZeroOcc	AltConf	Trace
			Total	C	N	O	S			
2	H	254	2000	1269	355	361	15	0	5	0

- Molecule 3 is a protein called Tissue factor.

Mol	Chain	Residues	Atoms					ZeroOcc	AltConf	Trace
			Total	C	N	O	S			
3	T	151	1218	774	198	244	2	0	0	0

- Molecule 4 is [2'-HYDROXY-3'-(1H-PYRROLO[3,2-C]PYRIDIN-2-YL)-BIPHENYL-3-YL METHYL]-UREA (three-letter code: 7NH) (formula: C₂₁H₁₈N₄O₂).



Mol	Chain	Residues	Atoms				ZeroOcc	AltConf
4	H	1	Total	C	N	O	0	0
			27	21	4	2		

- Molecule 5 is water.

Mol	Chain	Residues	Atoms		ZeroOcc	AltConf
5	L	70	Total	O	0	0
			70	70		
5	H	178	Total	O	0	2
			180	180		
5	T	103	Total	O	0	0
			103	103		

4 Data and refinement statistics i

Property	Value	Source
Space group	P 1 21 1	Depositor
Cell constants a, b, c, α , β , γ	77.31Å 68.64Å 77.89Å 90.00° 91.15° 90.00°	Depositor
Resolution (Å)	7.00 – 2.35 10.00 – 2.35	Depositor EDS
% Data completeness (in resolution range)	(Not available) (7.00-2.35) 95.1 (10.00-2.35)	Depositor EDS
R_{merge}	(Not available)	Depositor
R_{sym}	(Not available)	Depositor
$\langle I/\sigma(I) \rangle$ ¹	2.82 (at 2.36Å)	Xtriage
Refinement program	X-PLOR 3.851	Depositor
R, R_{free}	0.223 , 0.259 0.214 , 0.221	Depositor DCC
R_{free} test set	3222 reflections (10.05%)	wwPDB-VP
Wilson B-factor (Å ²)	25.4	Xtriage
Anisotropy	1.063	Xtriage
Bulk solvent k_{sol} (e/Å ³), B_{sol} (Å ²)	0.33 , 124.0	EDS
L-test for twinning ²	$\langle L \rangle = 0.50$, $\langle L^2 \rangle = 0.33$	Xtriage
Estimated twinning fraction	0.000 for l,k,-h 0.029 for h,-k,-l 0.020 for l,-k,h	Xtriage
F_o, F_c correlation	0.93	EDS
Total number of atoms	4325	wwPDB-VP
Average B, all atoms (Å ²)	32.0	wwPDB-VP

Xtriage's analysis on translational NCS is as follows: *The largest off-origin peak in the Patterson function is 7.62% of the height of the origin peak. No significant pseudotranslation is detected.*

¹ Intensities estimated from amplitudes.

² Theoretical values of $\langle |L| \rangle$, $\langle L^2 \rangle$ for acentric reflections are 0.5, 0.333 respectively for untwinned datasets, and 0.375, 0.2 for perfectly twinned datasets.

5 Model quality i

5.1 Standard geometry i

Bond lengths and bond angles in the following residue types are not validated in this section: 7NH

The Z score for a bond length (or angle) is the number of standard deviations the observed value is removed from the expected value. A bond length (or angle) with $|Z| > 5$ is considered an outlier worth inspection. RMSZ is the root-mean-square of all Z scores of the bond lengths (or angles).

Mol	Chain	Bond lengths		Bond angles	
		RMSZ	# Z >5	RMSZ	# Z >5
1	L	1.34	0/748	1.42	5/1009 (0.5%)
2	H	1.41	5/2058 (0.2%)	1.70	53/2800 (1.9%)
3	T	1.26	0/1244	1.64	21/1693 (1.2%)
All	All	1.35	5/4050 (0.1%)	1.63	79/5502 (1.4%)

All (5) bond length outliers are listed below:

Mol	Chain	Res	Type	Atoms	Z	Observed(Å)	Ideal(Å)
2	H	215	TRP	CG-CD2	-6.00	1.33	1.43
2	H	54	SER	CA-CB	5.50	1.61	1.52
2	H	141	TRP	CG-CD2	-5.42	1.34	1.43
2	H	29	TRP	CG-CD2	-5.25	1.34	1.43
2	H	237	TRP	CG-CD2	-5.07	1.35	1.43

All (79) bond angle outliers are listed below:

Mol	Chain	Res	Type	Atoms	Z	Observed(°)	Ideal(°)
3	T	45	TRP	CD1-NE1-CE2	10.26	118.24	109.00
2	H	61	TRP	CD1-NE1-CE2	10.00	118.00	109.00
3	T	25	TRP	CD1-NE1-CE2	9.85	117.87	109.00
2	H	29	TRP	CD1-NE1-CE2	9.80	117.82	109.00
2	H	51	TRP	CD1-NE1-CE2	9.69	117.72	109.00
2	H	237	TRP	CD1-NE1-CE2	9.19	117.27	109.00
2	H	141	TRP	CD1-NE1-CE2	9.18	117.26	109.00
3	T	14	TRP	CD1-NE1-CE2	8.79	116.91	109.00
2	H	207	TRP	CD1-NE1-CE2	8.76	116.89	109.00
3	T	157	TYR	N-CA-C	-8.62	87.73	111.00
2	H	29	TRP	CG-CD1-NE1	-8.39	101.71	110.10
2	H	207	TRP	NE1-CE2-CZ2	8.29	139.52	130.40
2	H	216	GLY	N-CA-C	-8.26	92.46	113.10

Continued on next page...

Continued from previous page...

Mol	Chain	Res	Type	Atoms	Z	Observed(°)	Ideal(°)
2	H	29	TRP	NE1-CE2-CZ2	8.25	139.47	130.40
1	L	123	ASP	CB-CG-OD2	-8.25	110.88	118.30
2	H	141	TRP	NE1-CE2-CZ2	8.19	139.41	130.40
2	H	215	TRP	NE1-CE2-CZ2	8.04	139.25	130.40
2	H	129(B)	ARG	NE-CZ-NH2	-8.03	116.28	120.30
2	H	237	TRP	NE1-CE2-CZ2	7.95	139.15	130.40
3	T	45	TRP	NE1-CE2-CZ2	7.94	139.13	130.40
2	H	199	HIS	N-CA-C	-7.93	89.60	111.00
2	H	61	TRP	CG-CD1-NE1	-7.84	102.26	110.10
2	H	129(G)	VAL	N-CA-C	-7.79	89.96	111.00
3	T	45	TRP	CG-CD1-NE1	-7.75	102.35	110.10
2	H	215	TRP	CD1-NE1-CE2	7.53	115.77	109.00
3	T	14	TRP	NE1-CE2-CZ2	7.42	138.57	130.40
2	H	237	TRP	CG-CD1-NE1	-7.40	102.70	110.10
3	T	25	TRP	NE1-CE2-CZ2	7.37	138.50	130.40
3	T	25	TRP	CG-CD1-NE1	-7.36	102.75	110.10
2	H	207	TRP	CG-CD1-NE1	-7.26	102.84	110.10
1	L	113	ARG	NE-CZ-NH2	-7.11	116.75	120.30
2	H	51	TRP	CG-CD1-NE1	-7.04	103.06	110.10
2	H	147	ARG	NE-CZ-NH2	-7.01	116.79	120.30
3	T	74	ARG	NE-CZ-NH2	-7.00	116.80	120.30
3	T	86	THR	N-CA-CB	-6.96	97.08	110.30
2	H	243	ARG	NE-CZ-NH2	-6.86	116.87	120.30
3	T	14	TRP	CG-CD1-NE1	-6.74	103.36	110.10
2	H	141	TRP	CG-CD1-NE1	-6.64	103.46	110.10
2	H	141	TRP	NE1-CE2-CD2	-6.62	100.68	107.30
2	H	61	TRP	NE1-CE2-CZ2	6.61	137.67	130.40
2	H	215	TRP	CG-CD2-CE3	-6.47	128.07	133.90
2	H	253	ARG	NE-CZ-NH2	-6.26	117.17	120.30
3	T	25	TRP	NE1-CE2-CD2	-6.24	101.06	107.30
2	H	29	TRP	NE1-CE2-CD2	-6.22	101.08	107.30
2	H	215	TRP	CG-CD1-NE1	-6.16	103.94	110.10
2	H	237	TRP	NE1-CE2-CD2	-6.13	101.17	107.30
3	T	45	TRP	NE1-CE2-CD2	-6.10	101.20	107.30
3	T	136	ARG	NE-CZ-NH2	-5.97	117.31	120.30
2	H	207	TRP	NE1-CE2-CD2	-5.97	101.33	107.30
3	T	40	THR	N-CA-C	-5.90	95.07	111.00
2	H	61	TRP	NE1-CE2-CD2	-5.89	101.41	107.30
2	H	99	THR	OG1-CB-CG2	-5.87	96.49	110.00
3	T	20	LYS	N-CA-C	-5.87	95.16	111.00
2	H	62	ARG	NE-CZ-NH2	-5.82	117.39	120.30
2	H	29	TRP	CG-CD2-CE3	-5.79	128.69	133.90

Continued on next page...

Continued from previous page...

Mol	Chain	Res	Type	Atoms	Z	Observed(°)	Ideal(°)
1	L	118	TYR	CB-CG-CD2	-5.78	117.53	121.00
2	H	134	ARG	NE-CZ-NH2	-5.72	117.44	120.30
3	T	156	TYR	N-CA-C	-5.67	95.69	111.00
3	T	14	TRP	NE1-CE2-CD2	-5.66	101.64	107.30
2	H	51	TRP	NE1-CE2-CD2	-5.66	101.64	107.30
2	H	134	ARG	CA-CB-CG	-5.64	100.99	113.40
2	H	215	TRP	NE1-CE2-CD2	-5.63	101.67	107.30
2	H	68	LEU	CA-CB-CG	-5.62	102.37	115.30
2	H	79	ASP	N-CA-C	5.61	126.14	111.00
2	H	51	TRP	NE1-CE2-CZ2	5.56	136.51	130.40
2	H	207	TRP	CG-CD2-CE3	-5.54	128.91	133.90
1	L	101	TYR	CB-CG-CD1	5.51	124.31	121.00
3	T	196	ARG	NE-CZ-NH2	-5.51	117.55	120.30
2	H	123	LEU	N-CA-C	-5.50	96.16	111.00
2	H	126	ARG	NE-CZ-NH2	-5.49	117.56	120.30
2	H	115	THR	OG1-CB-CG2	-5.45	97.47	110.00
2	H	170(D)	LYS	N-CA-C	5.44	125.69	111.00
2	H	129(B)	ARG	N-CA-CB	-5.39	100.90	110.60
3	T	28	LYS	N-CA-C	-5.30	96.69	111.00
2	H	170(C)	ARG	NE-CZ-NH2	-5.29	117.66	120.30
1	L	71	PHE	N-CA-C	-5.09	97.25	111.00
2	H	230	ARG	NE-CZ-NH1	5.09	122.84	120.30
2	H	141	TRP	CG-CD2-CE3	-5.09	129.32	133.90
2	H	129(B)	ARG	NE-CZ-NH1	5.02	122.81	120.30

There are no chirality outliers.

There are no planarity outliers.

5.2 Too-close contacts

In the following table, the Non-H and H(model) columns list the number of non-hydrogen atoms and hydrogen atoms in the chain respectively. The H(added) column lists the number of hydrogen atoms added and optimized by MolProbity. The Clashes column lists the number of clashes within the asymmetric unit, whereas Symm-Clashes lists symmetry related clashes.

Mol	Chain	Non-H	H(model)	H(added)	Clashes	Symm-Clashes
1	L	727	0	663	22	0
2	H	2000	0	1975	32	0
3	T	1218	0	1181	21	0
4	H	27	0	18	3	0
5	H	180	0	0	1	0

Continued on next page...

Continued from previous page...

Mol	Chain	Non-H	H(model)	H(added)	Clashes	Symm-Clashes
5	L	70	0	0	0	0
5	T	103	0	0	0	0
All	All	4325	0	3837	72	0

The all-atom clashscore is defined as the number of clashes found per 1000 atoms (including hydrogen atoms). The all-atom clashscore for this structure is 9.

All (72) close contacts within the same asymmetric unit are listed below, sorted by their clash magnitude.

Atom-1	Atom-2	Interatomic distance (Å)	Clash overlap (Å)
2:H:17:VAL:HG21	2:H:220[B]:CYS:SG	2.30	0.71
1:L:71:PHE:CE2	3:T:131:ARG:HD3	2.28	0.68
2:H:21:VAL:HG22	2:H:156:MET:SD	2.35	0.66
2:H:17:VAL:CG2	2:H:220[B]:CYS:SG	2.85	0.65
1:L:61:CYS:SG	1:L:68:TYR:HB2	2.42	0.60
1:L:71:PHE:CE2	3:T:131:ARG:CD	2.87	0.57
2:H:143:GLN:HE22	2:H:147:ARG:H	1.52	0.57
2:H:99:THR:HG22	2:H:215:TRP:CD1	2.40	0.56
4:H:258:7NH:N3	5:H:352:HOH:O	2.23	0.56
3:T:51:TYR:CE1	3:T:83:VAL:HG13	2.41	0.56
1:L:121[B]:LEU:HD11	1:L:128:THR:HB	1.90	0.54
1:L:65:LEU:HD12	1:L:65:LEU:N	2.23	0.53
2:H:136:SER:CB	2:H:199:HIS:CE1	2.92	0.53
2:H:143:GLN:HB2	2:H:191[A]:CYS:SG	2.50	0.52
2:H:143:GLN:HE22	2:H:147:ARG:N	2.07	0.52
2:H:143:GLN:HB2	2:H:191[B]:CYS:SG	2.50	0.51
3:T:194:PRO:HA	3:T:200:ARG:NH1	2.26	0.51
2:H:45:THR:O	2:H:52:VAL:HA	2.11	0.51
2:H:191[A]:CYS:SG	2:H:192:LYS:N	2.83	0.50
3:T:87:GLY:O	3:T:89:ALA:N	2.45	0.50
2:H:136:SER:HB2	2:H:199:HIS:CE1	2.46	0.50
1:L:105:HIS:CB	1:L:108:THR:HG23	2.41	0.49
1:L:62:LYS:O	1:L:68:TYR:HA	2.14	0.47
2:H:101:HIS:HA	2:H:234:TYR:OH	2.14	0.47
1:L:121[A]:LEU:HD12	1:L:126:SER:HB2	1.97	0.47
2:H:45:THR:OG1	2:H:198:PRO:HB3	2.15	0.47
2:H:245:GLU:H	2:H:247:ARG:NH1	2.13	0.47
3:T:155:LEU:O	3:T:188:SER:N	2.48	0.46
2:H:27:CYS:N	2:H:28:PRO:CD	2.78	0.46
2:H:50:ILE:HG13	2:H:51:TRP:CD1	2.51	0.46
3:T:147:PHE:CD1	3:T:193:ILE:HD13	2.51	0.46

Continued on next page...

Continued from previous page...

Atom-1	Atom-2	Interatomic distance (Å)	Clash overlap (Å)
1:L:105:HIS:HB3	1:L:108:THR:HG23	1.97	0.45
2:H:236:GLU:CD	2:H:236:GLU:H	2.19	0.45
2:H:217:GLN:HG3	2:H:224:HIS:CB	2.46	0.45
1:L:61:CYS:SG	1:L:68:TYR:CB	3.05	0.45
3:T:136:ARG:O	3:T:137:ASN:C	2.55	0.45
2:H:202:HIS:HB2	2:H:207:TRP:CH2	2.51	0.45
3:T:86:THR:OG1	3:T:90:GLY:C	2.56	0.45
2:H:35:VAL:HG21	2:H:60(B):ILE:CD1	2.47	0.45
2:H:59:PHE:HA	2:H:60(B):ILE:HG12	1.99	0.45
3:T:108:LEU:HB2	3:T:202:SER:HB3	1.99	0.44
2:H:16:ILE:N	2:H:143:GLN:O	2.50	0.44
3:T:23:LEU:O	3:T:56:GLU:HA	2.18	0.44
3:T:89:ALA:O	3:T:91:GLU:HG3	2.17	0.43
1:L:65:LEU:HD11	3:T:203:THR:HG21	1.99	0.43
3:T:196:ARG:O	3:T:200:ARG:HD2	2.18	0.43
1:L:105:HIS:HB3	1:L:108:THR:CG2	2.48	0.43
1:L:49:GLN:O	1:L:51:ALA:N	2.52	0.42
3:T:109:GLY:C	3:T:202:SER:HB2	2.39	0.42
2:H:42:CYS:SG	4:H:258:7NH:H3B	2.60	0.42
3:T:142:SER:O	3:T:145:ASP:N	2.53	0.42
2:H:228:TYR:N	2:H:228:TYR:CD1	2.87	0.42
1:L:99:GLU:HA	2:H:204:ARG:NH1	2.34	0.42
3:T:35:THR:HG23	3:T:50:PHE:HA	2.02	0.42
3:T:136:ARG:HB3	3:T:141:LEU:HD21	2.02	0.42
1:L:112:CYS:HB2	1:L:124:GLY:O	2.20	0.42
1:L:47:GLY:HA3	1:L:52:SER:O	2.20	0.42
2:H:161:PRO:O	2:H:183:ALA:HA	2.20	0.41
1:L:103:SER:O	1:L:110:ARG:HB2	2.19	0.41
1:L:65:LEU:H	1:L:65:LEU:HD12	1.85	0.41
2:H:143:GLN:HA	2:H:151:THR:HA	2.03	0.41
2:H:216:GLY:O	2:H:217:GLN:HB3	2.21	0.41
1:L:49:GLN:O	1:L:50:CYS:C	2.59	0.41
2:H:217:GLN:HG2	2:H:219:GLY:N	2.35	0.40
2:H:60:ASP:HB2	4:H:258:7NH:N52	2.36	0.40
1:L:49:GLN:OE1	1:L:49:GLN:N	2.54	0.40
3:T:150:ASP:O	3:T:193:ILE:HA	2.21	0.40
3:T:79:PRO:HD2	3:T:85:SER:HB2	2.03	0.40
1:L:49:GLN:HE21	1:L:66:GLN:HB3	1.86	0.40
3:T:37:GLN:HA	3:T:46:LYS:O	2.21	0.40

There are no symmetry-related clashes.

5.3 Torsion angles [i](#)

5.3.1 Protein backbone [i](#)

In the following table, the Percentiles column shows the percent Ramachandran outliers of the chain as a percentile score with respect to all X-ray entries followed by that with respect to entries of similar resolution.

The Analysed column shows the number of residues for which the backbone conformation was analysed, and the total number of residues.

Mol	Chain	Analysed	Favoured	Allowed	Outliers	Percentiles	
1	L	96/152 (63%)	78 (81%)	11 (12%)	7 (7%)	1	0
2	H	257/254 (101%)	227 (88%)	24 (9%)	6 (2%)	6	4
3	T	145/218 (66%)	122 (84%)	18 (12%)	5 (3%)	3	2
All	All	498/624 (80%)	427 (86%)	53 (11%)	18 (4%)	3	1

All (18) Ramachandran outliers are listed below:

Mol	Chain	Res	Type
1	L	50	CYS
2	H	79	ASP
2	H	221(A)	ALA
3	T	88	SER
1	L	57	ASN
2	H	60(B)	ILE
3	T	156	TYR
1	L	86	ASP
2	H	24	LYS
2	H	204	ARG
3	T	137	ASN
1	L	66	GLN
2	H	170(I)	PRO
3	T	18	ASN
3	T	199	ASN
1	L	49	GLN
1	L	74	PRO
1	L	53	SER

5.3.2 Protein sidechains [i](#)

In the following table, the Percentiles column shows the percent sidechain outliers of the chain as a percentile score with respect to all X-ray entries followed by that with respect to entries of similar resolution.

The Analysed column shows the number of residues for which the sidechain conformation was analysed, and the total number of residues.

Mol	Chain	Analysed	Rotameric	Outliers	Percentiles	
1	L	85/132 (64%)	81 (95%)	4 (5%)	26	31
2	H	221/216 (102%)	212 (96%)	9 (4%)	30	37
3	T	139/199 (70%)	133 (96%)	6 (4%)	29	35
All	All	445/547 (81%)	426 (96%)	19 (4%)	29	35

All (19) residues with a non-rotameric sidechain are listed below:

Mol	Chain	Res	Type
1	L	49	GLN
1	L	88	GLN
1	L	103	SER
1	L	110	ARG
2	H	29	TRP
2	H	68	LEU
2	H	75	GLU
2	H	84	ARG
2	H	159	ASN
2	H	215	TRP
2	H	217	GLN
2	H	233	GLN
2	H	236	GLU
3	T	6	THR
3	T	83	VAL
3	T	85	SER
3	T	131	ARG
3	T	156	TYR
3	T	195	SER

Some sidechains can be flipped to improve hydrogen bonding and reduce clashes. All (6) such sidechains are listed below:

Mol	Chain	Res	Type
1	L	64	GLN
1	L	80	ASN
2	H	100	ASN
2	H	143	GLN
2	H	159	ASN
2	H	233	GLN

5.3.3 RNA [i](#)

There are no RNA molecules in this entry.

5.4 Non-standard residues in protein, DNA, RNA chains [i](#)

There are no non-standard protein/DNA/RNA residues in this entry.

5.5 Carbohydrates [i](#)

There are no carbohydrates in this entry.

5.6 Ligand geometry [i](#)

1 ligand is modelled in this entry.

In the following table, the Counts columns list the number of bonds (or angles) for which Mogul statistics could be retrieved, the number of bonds (or angles) that are observed in the model and the number of bonds (or angles) that are defined in the Chemical Component Dictionary. The Link column lists molecule types, if any, to which the group is linked. The Z score for a bond length (or angle) is the number of standard deviations the observed value is removed from the expected value. A bond length (or angle) with $|Z| > 2$ is considered an outlier worth inspection. RMSZ is the root-mean-square of all Z scores of the bond lengths (or angles).

Mol	Type	Chain	Res	Link	Bond lengths			Bond angles		
					Counts	RMSZ	# Z > 2	Counts	RMSZ	# Z > 2
4	7NH	H	258	-	29,30,30	1.94	5 (17%)	38,42,42	1.86	8 (21%)

In the following table, the Chirals column lists the number of chiral outliers, the number of chiral centers analysed, the number of these observed in the model and the number defined in the Chemical Component Dictionary. Similar counts are reported in the Torsion and Rings columns. '-' means no outliers of that kind were identified.

Mol	Type	Chain	Res	Link	Chirals	Torsions	Rings
4	7NH	H	258	-	-	1/12/13/13	0/4/4/4

All (5) bond length outliers are listed below:

Mol	Chain	Res	Type	Atoms	Z	Observed(Å)	Ideal(Å)
4	H	258	7NH	C5'-C1B	-5.94	1.38	1.49
4	H	258	7NH	C1'-C8	-4.13	1.38	1.48
4	H	258	7NH	C3-C4	-3.82	1.35	1.41
4	H	258	7NH	C53-N52	-3.00	1.31	1.34

Continued on next page...

Continued from previous page...

Mol	Chain	Res	Type	Atoms	Z	Observed(Å)	Ideal(Å)
4	H	258	7NH	C3-C2	2.77	1.40	1.36

All (8) bond angle outliers are listed below:

Mol	Chain	Res	Type	Atoms	Z	Observed(°)	Ideal(°)
4	H	258	7NH	C3-C2-N1	-5.36	116.84	123.81
4	H	258	7NH	C2-N1-C6	4.82	127.54	117.25
4	H	258	7NH	C8-N3-C4	3.46	111.67	104.45
4	H	258	7NH	C5-C6-N1	-3.45	114.39	123.86
4	H	258	7NH	C2-C3-C4	-3.27	116.51	119.31
4	H	258	7NH	CN4-C8-C1'	3.01	133.62	129.44
4	H	258	7NH	O53-C53-N54	-2.90	118.24	123.22
4	H	258	7NH	C6'-C1'-C8	2.32	123.41	121.60

There are no chirality outliers.

All (1) torsion outliers are listed below:

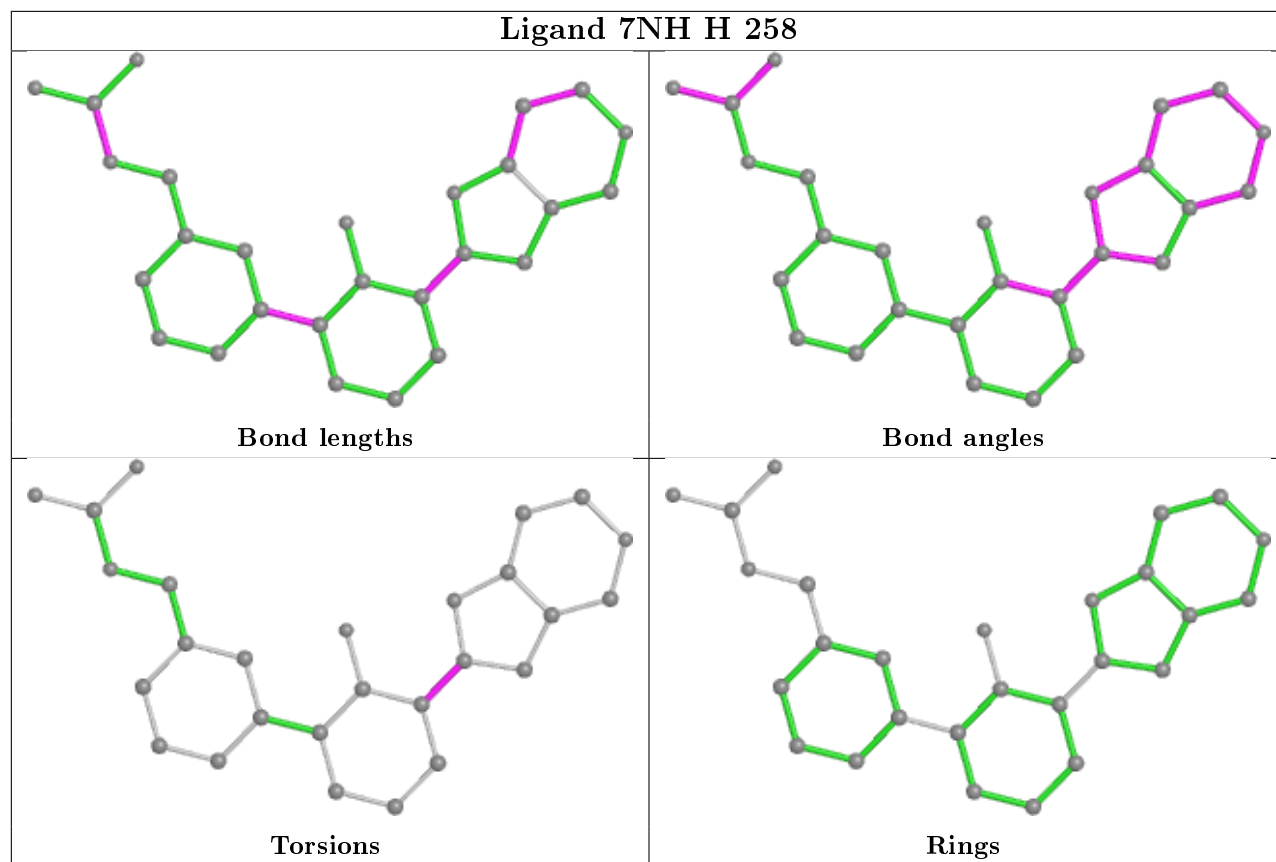
Mol	Chain	Res	Type	Atoms
4	H	258	7NH	C6'-C1'-C8-CN4

There are no ring outliers.

1 monomer is involved in 3 short contacts:

Mol	Chain	Res	Type	Clashes	Symm-Clashes
4	H	258	7NH	3	0

The following is a two-dimensional graphical depiction of Mogul quality analysis of bond lengths, bond angles, torsion angles, and ring geometry for all instances of the Ligand of Interest. In addition, ligands with molecular weight > 250 and outliers as shown on the validation Tables will also be included. For torsion angles, if less than 5% of the Mogul distribution of torsion angles is within 10 degrees of the torsion angle in question, then that torsion angle is considered an outlier. Any bond that is central to one or more torsion angles identified as an outlier by Mogul will be highlighted in the graph. For rings, the root-mean-square deviation (RMSD) between the ring in question and similar rings identified by Mogul is calculated over all ring torsion angles. If the average RMSD is greater than 60 degrees and the minimal RMSD between the ring in question and any Mogul-identified rings is also greater than 60 degrees, then that ring is considered an outlier. The outliers are highlighted in purple. The color gray indicates Mogul did not find sufficient equivalents in the CSD to analyse the geometry.



5.7 Other polymers [i](#)

There are no such residues in this entry.

5.8 Polymer linkage issues [i](#)

There are no chain breaks in this entry.

6 Fit of model and data [i](#)

6.1 Protein, DNA and RNA chains [i](#)

In the following table, the column labelled ‘#RSRZ> 2’ contains the number (and percentage) of RSRZ outliers, followed by percent RSRZ outliers for the chain as percentile scores relative to all X-ray entries and entries of similar resolution. The OWAB column contains the minimum, median, 95th percentile and maximum values of the occupancy-weighted average B-factor per residue. The column labelled ‘Q< 0.9’ lists the number of (and percentage) of residues with an average occupancy less than 0.9.

Mol	Chain	Analysed	<RSRZ>	#RSRZ>2	OWAB(Å ²)	Q<0.9
1	L	96/152 (63%)	0.11	7 (7%) 15 22	8, 29, 53, 63	17 (17%)
2	H	254/254 (100%)	-0.13	15 (5%) 22 33	4, 22, 64, 91	25 (9%)
3	T	151/218 (69%)	0.46	23 (15%) 2 3	10, 35, 64, 87	28 (18%)
All	All	501/624 (80%)	0.09	45 (8%) 9 14	4, 27, 63, 91	70 (13%)

All (45) RSRZ outliers are listed below:

Mol	Chain	Res	Type	RSRZ
2	H	170(F)	GLY	11.7
2	H	170(I)	PRO	9.5
2	H	170(H)	SER	9.4
2	H	170(G)	ASP	8.8
3	T	156	TYR	8.7
3	T	188	SER	8.6
1	L	66	GLN	8.1
3	T	137	ASN	7.5
3	T	138	ASN	7.0
1	L	49	GLN	6.3
3	T	157	TYR	5.1
2	H	170(E)	VAL	4.5
3	T	149	LYS	4.2
2	H	248	PRO	4.2
2	H	219	GLY	4.2
3	T	205	SER	4.0
3	T	86	THR	3.6
3	T	190	GLN	3.5
3	T	154	THR	3.5
1	L	50	CYS	3.4
2	H	175	ASN	3.4
2	H	61	TRP	3.2
3	T	203	THR	3.1

Continued on next page...

Continued from previous page...

Mol	Chain	Res	Type	RSRZ
3	T	189	VAL	3.0
3	T	129	ASP	3.0
2	H	63	ASN	2.9
1	L	48	ASP	2.8
3	T	191	ALA	2.8
1	L	81	CYS	2.7
3	T	200	ARG	2.5
1	L	74	PRO	2.4
2	H	249	GLY	2.4
2	H	247	ARG	2.4
2	H	170(C)	ARG	2.4
3	T	109	GLY	2.4
2	H	62	ARG	2.3
3	T	88	SER	2.3
3	T	81	GLY	2.3
1	L	67	SER	2.2
2	H	220[A]	CYS	2.2
3	T	87	GLY	2.2
3	T	83	VAL	2.1
3	T	155	LEU	2.1
3	T	85	SER	2.0
3	T	139	THR	2.0

6.2 Non-standard residues in protein, DNA, RNA chains [i](#)

There are no non-standard protein/DNA/RNA residues in this entry.

6.3 Carbohydrates [i](#)

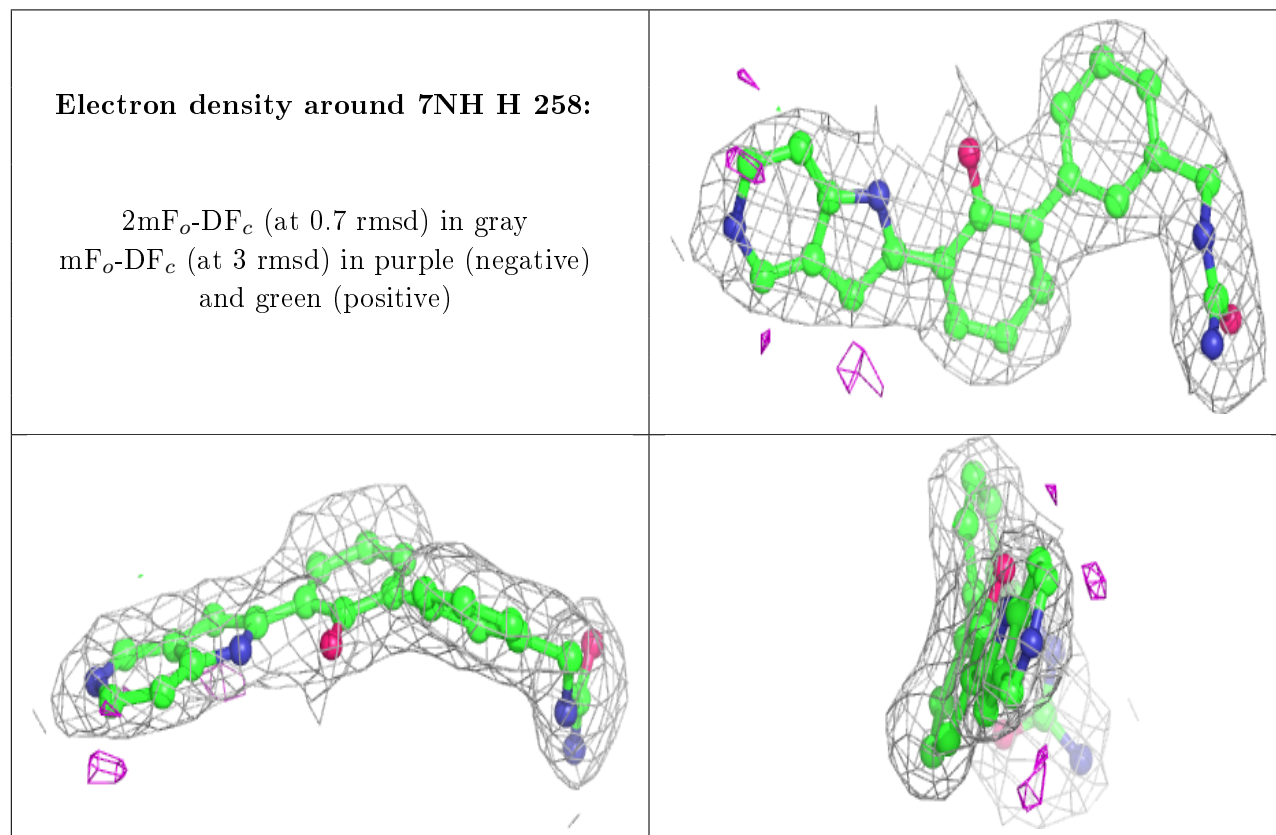
There are no carbohydrates in this entry.

6.4 Ligands [i](#)

In the following table, the Atoms column lists the number of modelled atoms in the group and the number defined in the chemical component dictionary. The B-factors column lists the minimum, median, 95th percentile and maximum values of B factors of atoms in the group. The column labelled 'Q< 0.9' lists the number of atoms with occupancy less than 0.9.

Mol	Type	Chain	Res	Atoms	RSCC	RSR	B-factors(Å ²)	Q<0.9
4	7NH	H	258	27/27	0.95	0.12	16,23,40,49	0

The following is a graphical depiction of the model fit to experimental electron density of all instances of the Ligand of Interest. In addition, ligands with molecular weight > 250 and outliers as shown on the geometry validation Tables will also be included. Each fit is shown from different orientation to approximate a three-dimensional view.



6.5 Other polymers [i](#)

There are no such residues in this entry.