



# Full wwPDB X-ray Structure Validation Report

Sep 6, 2023 – 11:34 PM EDT

PDB ID : 4FLQ  
Title : Crystal structure of Amylosucrase double mutant A289P-F290I from *Neisseria polysaccharea*.  
Authors : Guerin, F.; Champion, E.; Moulis, C.; Barbe, S.; Tran, T.H.; Morel, S.; Descroix, K.; Monsan, P.; Mulard, L.A.; Remaud-Simeon, M.; Andre, I.; Mourey, L.; Tranier, S.  
Deposited on : 2012-06-15  
Resolution : 2.50 Å(reported)

This is a Full wwPDB X-ray Structure Validation Report for a publicly released PDB entry.

We welcome your comments at [validation@mail.wwpdb.org](mailto:validation@mail.wwpdb.org)

A user guide is available at

<https://www.wwpdb.org/validation/2017/XrayValidationReportHelp>

with specific help available everywhere you see the  symbol.

The types of validation reports are described at

<http://www.wwpdb.org/validation/2017/FAQs#types>.

---

The following versions of software and data (see [references](#) ) were used in the production of this report:

MolProbity : 4.02b-467  
Mogul : 1.8.5 (274361), CSD as541be (2020)  
Xtriage (Phenix) : 1.13  
EDS : 2.35  
Percentile statistics : 20191225.v01 (using entries in the PDB archive December 25th 2019)  
Refmac : 5.8.0158  
CCP4 : 7.0.044 (Gargrove)  
Ideal geometry (proteins) : Engh & Huber (2001)  
Ideal geometry (DNA, RNA) : Parkinson et al. (1996)  
Validation Pipeline (wwPDB-VP) : 2.35

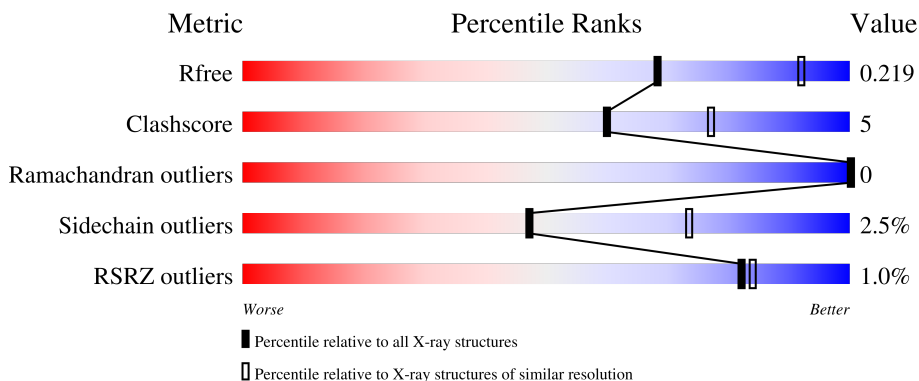
# 1 Overall quality at a glance

The following experimental techniques were used to determine the structure:

*X-RAY DIFFRACTION*

The reported resolution of this entry is 2.50 Å.

Percentile scores (ranging between 0-100) for global validation metrics of the entry are shown in the following graphic. The table shows the number of entries on which the scores are based.



Metric	Whole archive (#Entries)	Similar resolution (#Entries, resolution range(Å))
$R_{free}$	130704	4661 (2.50-2.50)
Clashscore	141614	5346 (2.50-2.50)
Ramachandran outliers	138981	5231 (2.50-2.50)
Sidechain outliers	138945	5233 (2.50-2.50)
RSRZ outliers	127900	4559 (2.50-2.50)

The table below summarises the geometric issues observed across the polymeric chains and their fit to the electron density. The red, orange, yellow and green segments of the lower bar indicate the fraction of residues that contain outliers for  $\geq 3$ , 2, 1 and 0 types of geometric quality criteria respectively. A grey segment represents the fraction of residues that are not modelled. The numeric value for each fraction is indicated below the corresponding segment, with a dot representing fractions  $\leq 5\%$ . The upper red bar (where present) indicates the fraction of residues that have poor fit to the electron density. The numeric value is given above the bar.

Mol	Chain	Length	Quality of chain
1	A	628	

## 2 Entry composition [i](#)

There are 6 unique types of molecules in this entry. The entry contains 5415 atoms, of which 0 are hydrogens and 0 are deuteriums.

In the tables below, the ZeroOcc column contains the number of atoms modelled with zero occupancy, the AltConf column contains the number of residues with at least one atom in alternate conformation and the Trace column contains the number of residues modelled with at most 2 atoms.

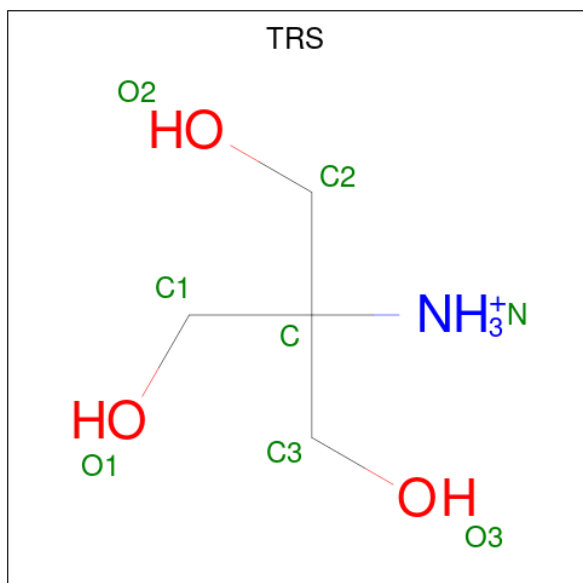
- Molecule 1 is a protein called Amylosucrase.

Mol	Chain	Residues	Atoms					ZeroOcc	AltConf	Trace
			Total	C	N	O	S			
1	A	628	5007	3183	872	931	21	0	1	0

There are 7 discrepancies between the modelled and reference sequences:

Chain	Residue	Modelled	Actual	Comment	Reference
A	1	SER	-	expression tag	UNP Q9ZEU2
A	2	PRO	-	expression tag	UNP Q9ZEU2
A	3	ASN	-	expression tag	UNP Q9ZEU2
A	4	SER	-	expression tag	UNP Q9ZEU2
A	289	PRO	ALA	engineered mutation	UNP Q9ZEU2
A	290	ILE	PHE	engineered mutation	UNP Q9ZEU2
A	537	ASP	GLY	cloning artifact	UNP Q9ZEU2

- Molecule 2 is 2-AMINO-2-HYDROXYMETHYL-PROPANE-1,3-DIOL (three-letter code: TRS) (formula:  $C_4H_{12}NO_3$ ).



Mol	Chain	Residues	Atoms				ZeroOcc	AltConf
			Total	C	N	O		
2	A	1	8	4	1	3	0	0

- Molecule 3 is GLYCEROL (three-letter code: GOL) (formula: C<sub>3</sub>H<sub>8</sub>O<sub>3</sub>).



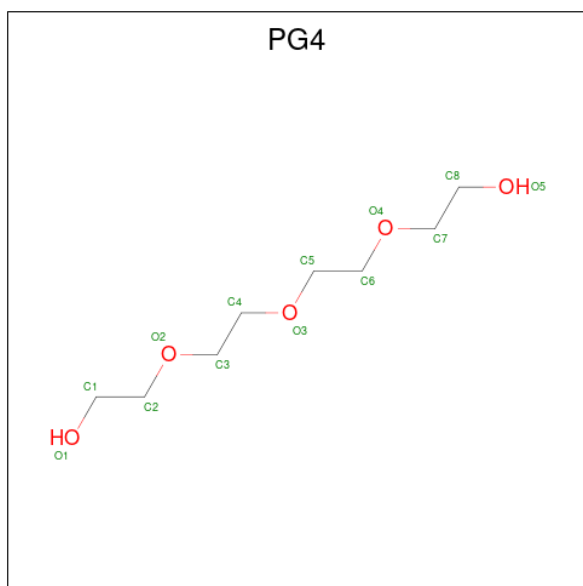
Mol	Chain	Residues	Atoms			ZeroOcc	AltConf
			Total	C	O		
3	A	1	6	3	3	0	0
3	A	1	6	3	3	0	0
3	A	1	6	3	3	0	0
3	A	1	6	3	3	0	0
3	A	1	6	3	3	0	0
3	A	1	6	3	3	0	0
3	A	1	6	3	3	0	0

- Molecule 4 is TRIETHYLENE GLYCOL (three-letter code: PGE) (formula: C<sub>6</sub>H<sub>14</sub>O<sub>4</sub>).



Mol	Chain	Residues	Atoms			ZeroOcc	AltConf
4	A	1	Total	C	O	0	0
			10	6	4		

- Molecule 5 is TETRAETHYLENE GLYCOL (three-letter code: PG4) (formula: C<sub>8</sub>H<sub>18</sub>O<sub>5</sub>).



Mol	Chain	Residues	Atoms			ZeroOcc	AltConf
5	A	1	Total	C	O	0	0
			13	8	5		

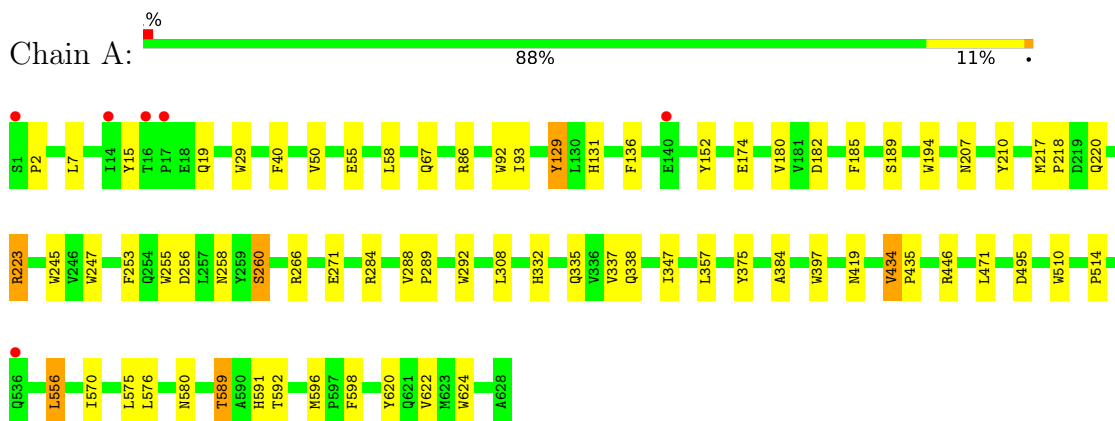
- Molecule 6 is water.

Mol	Chain	Residues	Atoms		ZeroOcc	AltConf
6	A	335	Total 335	O 335	0	0

### 3 Residue-property plots [i](#)

These plots are drawn for all protein, RNA, DNA and oligosaccharide chains in the entry. The first graphic for a chain summarises the proportions of the various outlier classes displayed in the second graphic. The second graphic shows the sequence view annotated by issues in geometry and electron density. Residues are color-coded according to the number of geometric quality criteria for which they contain at least one outlier: green = 0, yellow = 1, orange = 2 and red = 3 or more. A red dot above a residue indicates a poor fit to the electron density ( $RSRZ > 2$ ). Stretches of 2 or more consecutive residues without any outlier are shown as a green connector. Residues present in the sample, but not in the model, are shown in grey.

- Molecule 1: Amylosucrase



## 4 Data and refinement statistics

Property	Value	Source
Space group	P 21 21 2	Depositor
Cell constants a, b, c, $\alpha$ , $\beta$ , $\gamma$	96.48Å 115.81Å 60.82Å 90.00° 90.00° 90.00°	Depositor
Resolution (Å)	12.00 – 2.50 11.98 – 2.50	Depositor EDS
% Data completeness (in resolution range)	97.0 (12.00-2.50) 98.1 (11.98-2.50)	Depositor EDS
$R_{merge}$	0.10	Depositor
$R_{sym}$	(Not available)	Depositor
$\langle I/\sigma(I) \rangle$ <sup>1</sup>	2.66 (at 2.49Å)	Xtrriage
Refinement program	REFMAC 5.6.0117	Depositor
R, $R_{free}$	0.173 , 0.219 0.173 , 0.219	Depositor DCC
$R_{free}$ test set	2387 reflections (10.13%)	wwPDB-VP
Wilson B-factor (Å <sup>2</sup> )	25.6	Xtrriage
Anisotropy	0.089	Xtrriage
Bulk solvent $k_{sol}$ (e/Å <sup>3</sup> ), $B_{sol}$ (Å <sup>2</sup> )	0.45 , 52.5	EDS
L-test for twinning <sup>2</sup>	$\langle  L  \rangle = 0.48$ , $\langle L^2 \rangle = 0.31$	Xtrriage
Estimated twinning fraction	No twinning to report.	Xtrriage
$F_o, F_c$ correlation	0.95	EDS
Total number of atoms	5415	wwPDB-VP
Average B, all atoms (Å <sup>2</sup> )	23.0	wwPDB-VP

Xtrriage's analysis on translational NCS is as follows: *The largest off-origin peak in the Patterson function is 4.85% of the height of the origin peak. No significant pseudotranslation is detected.*

<sup>1</sup>Intensities estimated from amplitudes.

<sup>2</sup>Theoretical values of  $\langle |L| \rangle$ ,  $\langle L^2 \rangle$  for acentric reflections are 0.5, 0.333 respectively for untwinned datasets, and 0.375, 0.2 for perfectly twinned datasets.



## 5 Model quality [i](#)

### 5.1 Standard geometry [i](#)

Bond lengths and bond angles in the following residue types are not validated in this section: GOL, PG4, PGE, TRS

The Z score for a bond length (or angle) is the number of standard deviations the observed value is removed from the expected value. A bond length (or angle) with  $|Z| > 5$  is considered an outlier worth inspection. RMSZ is the root-mean-square of all Z scores of the bond lengths (or angles).

Mol	Chain	Bond lengths		Bond angles	
		RMSZ	# Z  >5	RMSZ	# Z  >5
1	A	0.52	7/5146 (0.1%)	0.55	1/7007 (0.0%)

All (7) bond length outliers are listed below:

Mol	Chain	Res	Type	Atoms	Z	Observed(Å)	Ideal(Å)
1	A	292	TRP	CD2-CE2	5.20	1.47	1.41
1	A	255	TRP	CD2-CE2	5.15	1.47	1.41
1	A	29	TRP	CD2-CE2	5.14	1.47	1.41
1	A	194	TRP	CD2-CE2	5.11	1.47	1.41
1	A	624	TRP	CD2-CE2	5.10	1.47	1.41
1	A	245	TRP	CD2-CE2	5.01	1.47	1.41
1	A	510	TRP	CD2-CE2	5.01	1.47	1.41

All (1) bond angle outliers are listed below:

Mol	Chain	Res	Type	Atoms	Z	Observed(°)	Ideal(°)
1	A	556	LEU	CA-CB-CG	5.33	127.57	115.30

There are no chirality outliers.

There are no planarity outliers.

### 5.2 Too-close contacts [i](#)

In the following table, the Non-H and H(model) columns list the number of non-hydrogen atoms and hydrogen atoms in the chain respectively. The H(added) column lists the number of hydrogen atoms added and optimized by MolProbity. The Clashes column lists the number of clashes within the asymmetric unit, whereas Symm-Clashes lists symmetry-related clashes.

Mol	Chain	Non-H	H(model)	H(added)	Clashes	Symm-Clashes
1	A	5007	0	4759	44	0
2	A	8	0	12	0	0
3	A	42	0	56	4	0
4	A	10	0	14	3	0
5	A	13	0	18	4	0
6	A	335	0	0	3	0
All	All	5415	0	4859	46	0

The all-atom clashscore is defined as the number of clashes found per 1000 atoms (including hydrogen atoms). The all-atom clashscore for this structure is 5.

All (46) close contacts within the same asymmetric unit are listed below, sorted by their clash magnitude.

Atom-1	Atom-2	Interatomic distance (Å)	Clash overlap (Å)
1:A:589:THR:HG22	1:A:592:THR:H	1.45	0.82
1:A:332:HIS:CD2	3:A:708:GOL:H11	2.19	0.77
1:A:332:HIS:HD2	3:A:708:GOL:H11	1.51	0.75
1:A:335:GLN:HA	1:A:338:GLN:HE21	1.60	0.67
1:A:207:ASN:HD22	4:A:709:PGE:H22	1.64	0.62
1:A:67:GLN:HE22	1:A:266:ARG:HD3	1.68	0.59
1:A:337:VAL:HG11	6:A:992:HOH:O	2.03	0.58
1:A:580:ASN:O	1:A:620:TYR:HA	2.07	0.55
5:A:710:PG4:H62	6:A:873:HOH:O	2.07	0.54
1:A:152:TYR:HB2	1:A:271:GLU:OE1	2.07	0.53
1:A:7:LEU:CD1	1:A:40:PHE:CZ	2.92	0.53
1:A:15:TYR:HB3	1:A:19:GLN:HG3	1.91	0.53
1:A:266:ARG:NH2	5:A:710:PG4:H32	2.25	0.51
1:A:266:ARG:HH22	5:A:710:PG4:H21	1.76	0.51
1:A:217:MET:HB2	1:A:218:PRO:HD3	1.93	0.51
1:A:589:THR:HB	6:A:951:HOH:O	2.11	0.50
1:A:67:GLN:NE2	1:A:266:ARG:HD3	2.27	0.50
4:A:709:PGE:O2	4:A:709:PGE:H52	2.12	0.49
1:A:207:ASN:ND2	4:A:709:PGE:H22	2.26	0.49
1:A:2:PRO:HG3	1:A:58:LEU:HD13	1.94	0.49
1:A:397:TRP:HE1	1:A:419:ASN:ND2	2.11	0.49
1:A:258:ASN:OD1	1:A:260:SER:OG	2.23	0.48
1:A:375:TYR:HB3	3:A:704:GOL:H12	1.95	0.48
1:A:357:LEU:HB3	1:A:471:LEU:HD22	1.96	0.47
1:A:131:HIS:HA	1:A:180:VAL:HB	1.97	0.47
1:A:220:GLN:HA	1:A:223:ARG:HD3	1.96	0.47
1:A:182:ASP:OD2	1:A:284:ARG:HD3	2.14	0.46
1:A:210:TYR:HB2	1:A:247:TRP:HB2	1.97	0.46

*Continued on next page...*

Continued from previous page...

Atom-1	Atom-2	Interatomic distance (Å)	Clash overlap (Å)
1:A:266:ARG:HH22	5:A:710:PG4:H32	1.80	0.46
1:A:86:ARG:HD3	1:A:92:TRP:NE1	2.32	0.44
1:A:335:GLN:HA	1:A:338:GLN:NE2	2.31	0.44
1:A:589:THR:HG23	1:A:591:HIS:H	1.83	0.44
1:A:55:GLU:OE1	3:A:703:GOL:O3	2.35	0.44
1:A:288:VAL:N	1:A:289:PRO:CD	2.82	0.43
1:A:434:VAL:HG23	1:A:435:PRO:HD2	2.01	0.42
1:A:570:ILE:HA	1:A:575:LEU:O	2.19	0.42
1:A:288:VAL:N	1:A:289:PRO:HD3	2.35	0.41
1:A:495:ASP:HB2	1:A:514:PRO:HB3	2.02	0.41
1:A:576:LEU:HD22	1:A:596:MET:SD	2.60	0.41
1:A:129:TYR:CZ	1:A:180:VAL:HG21	2.55	0.41
1:A:93:ILE:H	1:A:93:ILE:HG13	1.60	0.41
1:A:189:SER:HA	1:A:253:PHE:O	2.21	0.41
1:A:266:ARG:HD2	1:A:266:ARG:O	2.21	0.41
1:A:347:ILE:HG22	1:A:384:ALA:HB3	2.03	0.41
1:A:50:VAL:HG11	1:A:308:LEU:HD21	2.03	0.40
1:A:182:ASP:HA	1:A:284:ARG:HB3	2.03	0.40

There are no symmetry-related clashes.

## 5.3 Torsion angles [i](#)

### 5.3.1 Protein backbone [i](#)

In the following table, the Percentiles column shows the percent Ramachandran outliers of the chain as a percentile score with respect to all X-ray entries followed by that with respect to entries of similar resolution.

The Analysed column shows the number of residues for which the backbone conformation was analysed, and the total number of residues.

Mol	Chain	Analysed	Favoured	Allowed	Outliers	Percentiles
1	A	627/628 (100%)	609 (97%)	18 (3%)	0	<b>100</b> <b>100</b>

There are no Ramachandran outliers to report.

### 5.3.2 Protein sidechains [i](#)

In the following table, the Percentiles column shows the percent sidechain outliers of the chain as a percentile score with respect to all X-ray entries followed by that with respect to entries of similar

resolution.

The Analysed column shows the number of residues for which the sidechain conformation was analysed, and the total number of residues.

Mol	Chain	Analysed	Rotameric	Outliers	Percentiles
1	A	523/534 (98%)	510 (98%)	13 (2%)	47 73

All (13) residues with a non-rotameric sidechain are listed below:

Mol	Chain	Res	Type
1	A	129	TYR
1	A	136	PHE
1	A	174	GLU
1	A	185	PHE
1	A	223	ARG
1	A	256	ASP
1	A	260	SER
1	A	434	VAL
1	A	446	ARG
1	A	556	LEU
1	A	589	THR
1	A	598	PHE
1	A	622	VAL

Sometimes sidechains can be flipped to improve hydrogen bonding and reduce clashes. All (9) such sidechains are listed below:

Mol	Chain	Res	Type
1	A	67	GLN
1	A	123	GLN
1	A	186	ASN
1	A	196	GLN
1	A	207	ASN
1	A	338	GLN
1	A	353	GLN
1	A	419	ASN
1	A	560	ASN

### 5.3.3 RNA

There are no RNA molecules in this entry.

## 5.4 Non-standard residues in protein, DNA, RNA chains [i](#)

There are no non-standard protein/DNA/RNA residues in this entry.

## 5.5 Carbohydrates [i](#)

There are no monosaccharides in this entry.

## 5.6 Ligand geometry [i](#)

10 ligands are modelled in this entry.

In the following table, the Counts columns list the number of bonds (or angles) for which Mogul statistics could be retrieved, the number of bonds (or angles) that are observed in the model and the number of bonds (or angles) that are defined in the Chemical Component Dictionary. The Link column lists molecule types, if any, to which the group is linked. The Z score for a bond length (or angle) is the number of standard deviations the observed value is removed from the expected value. A bond length (or angle) with  $|Z| > 2$  is considered an outlier worth inspection. RMSZ is the root-mean-square of all Z scores of the bond lengths (or angles).

Mol	Type	Chain	Res	Link	Bond lengths			Bond angles		
					Counts	RMSZ	# Z  > 2	Counts	RMSZ	# Z  > 2
5	PG4	A	710	-	12,12,12	0.54	0	11,11,11	0.31	0
3	GOL	A	706	-	5,5,5	0.30	0	5,5,5	0.24	0
3	GOL	A	707	-	5,5,5	0.33	0	5,5,5	0.23	0
3	GOL	A	705	-	5,5,5	0.20	0	5,5,5	0.28	0
3	GOL	A	708	-	5,5,5	0.43	0	5,5,5	0.32	0
4	PGE	A	709	-	9,9,9	0.56	0	8,8,8	0.39	0
3	GOL	A	703	-	5,5,5	0.14	0	5,5,5	0.54	0
2	TRS	A	701	-	7,7,7	0.27	0	9,9,9	0.43	0
3	GOL	A	704	-	5,5,5	0.34	0	5,5,5	0.29	0
3	GOL	A	702	-	5,5,5	0.36	0	5,5,5	0.22	0

In the following table, the Chirals column lists the number of chiral outliers, the number of chiral centers analysed, the number of these observed in the model and the number defined in the Chemical Component Dictionary. Similar counts are reported in the Torsion and Rings columns. '-' means no outliers of that kind were identified.

Mol	Type	Chain	Res	Link	Chirals	Torsions	Rings
5	PG4	A	710	-	-	6/10/10/10	-
3	GOL	A	706	-	-	2/4/4/4	-
3	GOL	A	707	-	-	0/4/4/4	-
3	GOL	A	705	-	-	0/4/4/4	-

*Continued on next page...*

*Continued from previous page...*

Mol	Type	Chain	Res	Link	Chirals	Torsions	Rings
3	GOL	A	708	-	-	4/4/4/4	-
4	PGE	A	709	-	-	4/7/7/7	-
3	GOL	A	703	-	-	1/4/4/4	-
2	TRS	A	701	-	-	5/9/9/9	-
3	GOL	A	704	-	-	2/4/4/4	-
3	GOL	A	702	-	-	2/4/4/4	-

There are no bond length outliers.

There are no bond angle outliers.

There are no chirality outliers.

All (26) torsion outliers are listed below:

Mol	Chain	Res	Type	Atoms
3	A	702	GOL	C1-C2-C3-O3
3	A	704	GOL	C1-C2-C3-O3
5	A	710	PG4	O3-C5-C6-O4
3	A	706	GOL	O2-C2-C3-O3
3	A	706	GOL	C1-C2-C3-O3
3	A	708	GOL	O1-C1-C2-C3
3	A	708	GOL	C1-C2-C3-O3
5	A	710	PG4	O2-C3-C4-O3
3	A	702	GOL	O2-C2-C3-O3
3	A	704	GOL	O2-C2-C3-O3
4	A	709	PGE	O3-C5-C6-O4
3	A	708	GOL	O2-C2-C3-O3
5	A	710	PG4	C1-C2-O2-C3
2	A	701	TRS	C2-C-C3-O3
4	A	709	PGE	C4-C3-O2-C2
5	A	710	PG4	O1-C1-C2-O2
5	A	710	PG4	C3-C4-O3-C5
2	A	701	TRS	C3-C-C2-O2
2	A	701	TRS	C1-C-C3-O3
5	A	710	PG4	O4-C7-C8-O5
4	A	709	PGE	C6-C5-O3-C4
3	A	708	GOL	O1-C1-C2-O2
2	A	701	TRS	N-C-C2-O2
2	A	701	TRS	N-C-C3-O3
3	A	703	GOL	C1-C2-C3-O3
4	A	709	PGE	O1-C1-C2-O2

There are no ring outliers.

5 monomers are involved in 11 short contacts:

Mol	Chain	Res	Type	Clashes	Symm-Clashes
5	A	710	PG4	4	0
3	A	708	GOL	2	0
4	A	709	PGE	3	0
3	A	703	GOL	1	0
3	A	704	GOL	1	0

## 5.7 Other polymers [i](#)

There are no such residues in this entry.

## 5.8 Polymer linkage issues [i](#)

There are no chain breaks in this entry.

## 6 Fit of model and data [i](#)

### 6.1 Protein, DNA and RNA chains [i](#)

In the following table, the column labelled '#RSRZ > 2' contains the number (and percentage) of RSRZ outliers, followed by percent RSRZ outliers for the chain as percentile scores relative to all X-ray entries and entries of similar resolution. The OWAB column contains the minimum, median, 95<sup>th</sup> percentile and maximum values of the occupancy-weighted average B-factor per residue. The column labelled 'Q < 0.9' lists the number of (and percentage) of residues with an average occupancy less than 0.9.

Mol	Chain	Analysed	<RSRZ>	#RSRZ>2	OWAB(Å <sup>2</sup> )	Q<0.9
1	A	628/628 (100%)	-0.25	6 (0%) 82   84	14, 22, 35, 65	0

All (6) RSRZ outliers are listed below:

Mol	Chain	Res	Type	RSRZ
1	A	17	PRO	4.8
1	A	1	SER	4.0
1	A	16	THR	2.5
1	A	14	ILE	2.3
1	A	536	GLN	2.2
1	A	140	GLU	2.1

### 6.2 Non-standard residues in protein, DNA, RNA chains [i](#)

There are no non-standard protein/DNA/RNA residues in this entry.

### 6.3 Carbohydrates [i](#)

There are no monosaccharides in this entry.

### 6.4 Ligands [i](#)

In the following table, the Atoms column lists the number of modelled atoms in the group and the number defined in the chemical component dictionary. The B-factors column lists the minimum, median, 95<sup>th</sup> percentile and maximum values of B factors of atoms in the group. The column labelled 'Q < 0.9' lists the number of atoms with occupancy less than 0.9.

Mol	Type	Chain	Res	Atoms	RSCC	RSR	B-factors(Å <sup>2</sup> )	Q<0.9
3	GOL	A	707	6/6	0.67	0.38	51,52,53,53	0

*Continued on next page...*



*Continued from previous page...*

Mol	Type	Chain	Res	Atoms	RSCC	RSR	B-factors( $\text{\AA}^2$ )	Q<0.9
3	GOL	A	704	6/6	0.75	0.26	33,34,36,36	0
3	GOL	A	708	6/6	0.76	0.32	32,32,33,34	0
4	PGE	A	709	10/10	0.80	0.25	40,43,44,46	0
3	GOL	A	706	6/6	0.84	0.23	42,43,44,44	0
5	PG4	A	710	13/13	0.85	0.19	36,38,42,43	0
3	GOL	A	702	6/6	0.92	0.13	24,26,26,27	0
3	GOL	A	703	6/6	0.93	0.18	28,29,29,30	0
3	GOL	A	705	6/6	0.95	0.16	27,28,29,30	0
2	TRS	A	701	8/8	0.95	0.13	13,13,14,14	0

## 6.5 Other polymers [i](#)

There are no such residues in this entry.