



# Full wwPDB X-ray Structure Validation Report ⓘ

Oct 25, 2022 – 07:07 PM EDT

PDB ID : 7FMG  
Title : PanDDA analysis group deposition – Aar2/RNaseH in complex with fragment P06C09 from the F2X-Universal Library  
Authors : Barthel, T.; Wollenhaupt, J.; Lima, G.M.A.; Wahl, M.C.; Weiss, M.S.  
Deposited on : 2022-08-26  
Resolution : 1.71 Å(reported)

This is a Full wwPDB X-ray Structure Validation Report for a publicly released PDB entry.

We welcome your comments at [validation@mail.wwpdb.org](mailto:validation@mail.wwpdb.org)

A user guide is available at

<https://www.wwpdb.org/validation/2017/XrayValidationReportHelp>

with specific help available everywhere you see the ⓘ symbol.

The types of validation reports are described at

<http://www.wwpdb.org/validation/2017/FAQs#types>.

---

The following versions of software and data (see [references ⓘ](#)) were used in the production of this report:

MolProbity : 4.02b-467  
Mogul : 1.8.5 (274361), CSD as541be (2020)  
Xtriage (Phenix) : 1.13  
EDS : 2.31.2  
Percentile statistics : 20191225.v01 (using entries in the PDB archive December 25th 2019)  
Refmac : 5.8.0158  
CCP4 : 7.0.044 (Gargrove)  
Ideal geometry (proteins) : Engh & Huber (2001)  
Ideal geometry (DNA, RNA) : Parkinson et al. (1996)  
Validation Pipeline (wwPDB-VP) : 2.31.2

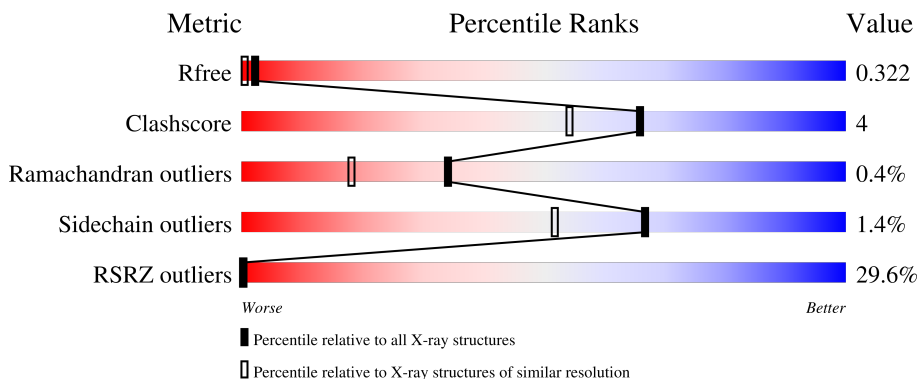
# 1 Overall quality at a glance

The following experimental techniques were used to determine the structure:

*X-RAY DIFFRACTION*

The reported resolution of this entry is 1.71 Å.

Percentile scores (ranging between 0-100) for global validation metrics of the entry are shown in the following graphic. The table shows the number of entries on which the scores are based.



Metric	Whole archive (#Entries)	Similar resolution (#Entries, resolution range(Å))
$R_{free}$	130704	5722 (1.74-1.70)
Clashscore	141614	6152 (1.74-1.70)
Ramachandran outliers	138981	6051 (1.74-1.70)
Sidechain outliers	138945	6051 (1.74-1.70)
RSRZ outliers	127900	5629 (1.74-1.70)

The table below summarises the geometric issues observed across the polymeric chains and their fit to the electron density. The red, orange, yellow and green segments of the lower bar indicate the fraction of residues that contain outliers for  $\geq 3$ , 2, 1 and 0 types of geometric quality criteria respectively. A grey segment represents the fraction of residues that are not modelled. The numeric value for each fraction is indicated below the corresponding segment, with a dot representing fractions  $\leq 5\%$ . The upper red bar (where present) indicates the fraction of residues that have poor fit to the electron density. The numeric value is given above the bar.

Mol	Chain	Length	Quality of chain
1	A	258	
2	B	308	

## 2 Entry composition

There are 4 unique types of molecules in this entry. The entry contains 9189 atoms, of which 4524 are hydrogens and 0 are deuteriums.

In the tables below, the ZeroOcc column contains the number of atoms modelled with zero occupancy, the AltConf column contains the number of residues with at least one atom in alternate conformation and the Trace column contains the number of residues modelled with at most 2 atoms.

- Molecule 1 is a protein called Pre-mRNA-splicing factor 8.

Mol	Chain	Residues	Atoms					ZeroOcc	AltConf	Trace	
			Total	C	H	N	O				S
1	A	237	4068	1287	2060	336	373	12	0	21	0

There are 3 discrepancies between the modelled and reference sequences:

Chain	Residue	Modelled	Actual	Comment	Reference
A	1833	GLY	-	expression tag	UNP P33334
A	1834	ALA	-	expression tag	UNP P33334
A	1835	MET	-	expression tag	UNP P33334

- Molecule 2 is a protein called A1 cistron-splicing factor AAR2.

Mol	Chain	Residues	Atoms					ZeroOcc	AltConf	Trace	
			Total	C	H	N	O				S
2	B	300	5044	1654	2464	421	485	20	33	17	0

There are 20 discrepancies between the modelled and reference sequences:

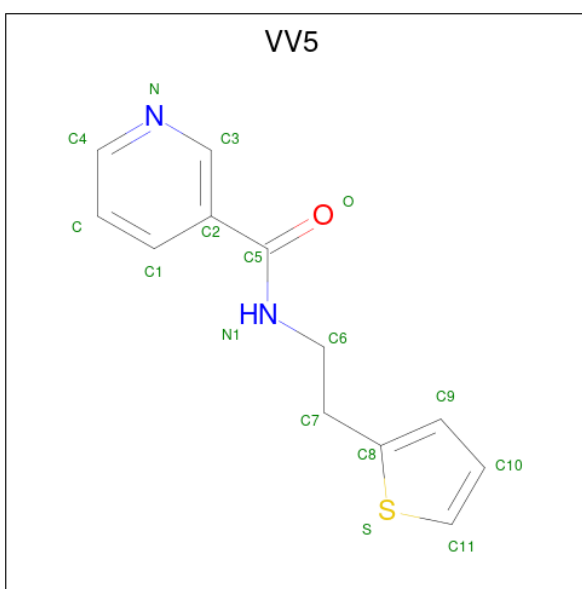
Chain	Residue	Modelled	Actual	Comment	Reference
B	-3	GLY	-	expression tag	UNP P32357
B	-2	ALA	-	expression tag	UNP P32357
B	-1	MET	-	expression tag	UNP P32357
B	0	ALA	-	expression tag	UNP P32357
B	166	SER	LEU	conflict	UNP P32357
B	167	SER	LYS	conflict	UNP P32357
B	?	-	LEU	deletion	UNP P32357
B	?	-	GLN	deletion	UNP P32357
B	?	-	LYS	deletion	UNP P32357
B	?	-	ALA	deletion	UNP P32357
B	?	-	GLY	deletion	UNP P32357
B	?	-	SER	deletion	UNP P32357
B	?	-	LYS	deletion	UNP P32357

*Continued on next page...*

Continued from previous page...

Chain	Residue	Modelled	Actual	Comment	Reference
B	?	-	MET	deletion	UNP P32357
B	?	-	GLU	deletion	UNP P32357
B	?	-	ALA	deletion	UNP P32357
B	?	-	LYS	deletion	UNP P32357
B	?	-	ASN	deletion	UNP P32357
B	?	-	GLU	deletion	UNP P32357
B	170	SER	ASP	conflict	UNP P32357

- Molecule 3 is N-[2-(thiophen-2-yl)ethyl]pyridine-3-carboxamide (three-letter code: VV5) (formula: C<sub>12</sub>H<sub>12</sub>N<sub>2</sub>OS).



Mol	Chain	Residues	Atoms					ZeroOcc	AltConf
			Total	C	N	O	S		
3	A	1	16	12	2	1	1	0	0

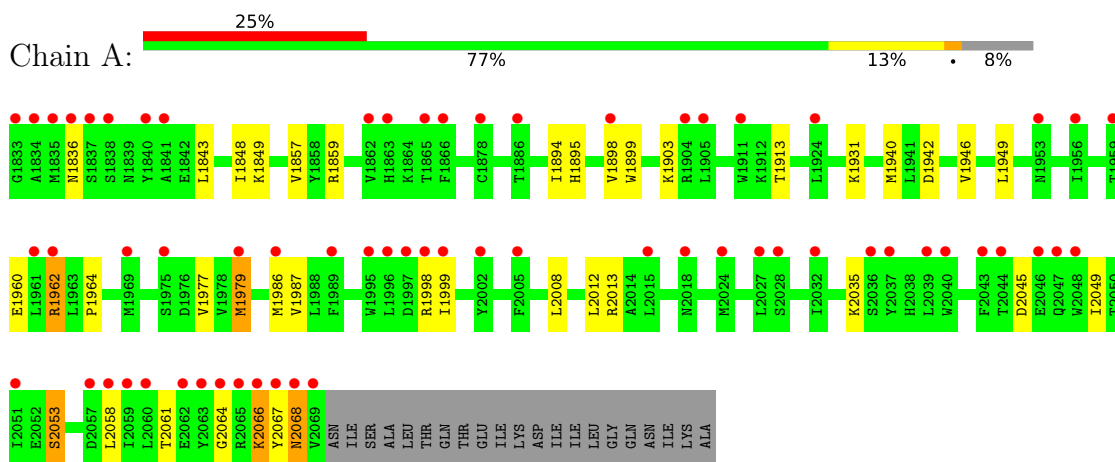
- Molecule 4 is water.

Mol	Chain	Residues	Atoms		ZeroOcc	AltConf
4	A	33	Total	O	0	0
			33	33		
4	B	28	Total	O	0	0
			28	28		

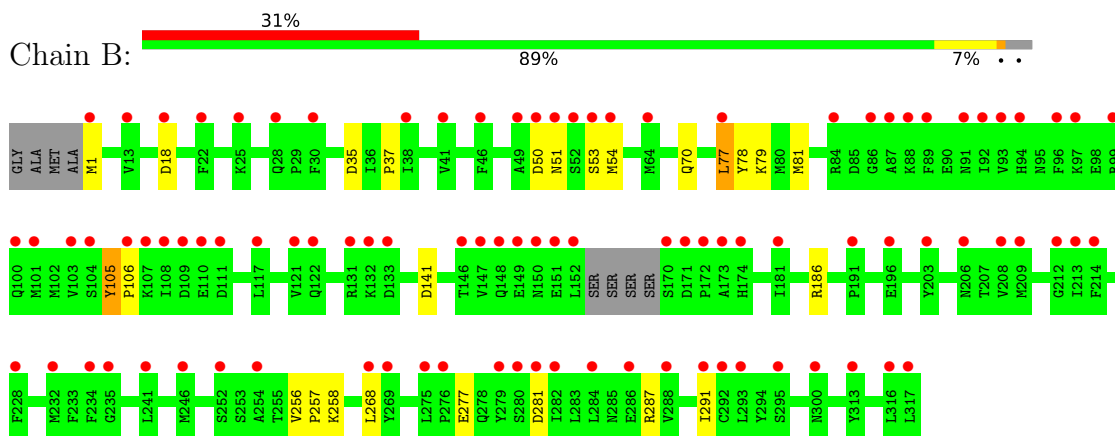
### 3 Residue-property plots [i](#)

These plots are drawn for all protein, RNA, DNA and oligosaccharide chains in the entry. The first graphic for a chain summarises the proportions of the various outlier classes displayed in the second graphic. The second graphic shows the sequence view annotated by issues in geometry and electron density. Residues are color-coded according to the number of geometric quality criteria for which they contain at least one outlier: green = 0, yellow = 1, orange = 2 and red = 3 or more. A red dot above a residue indicates a poor fit to the electron density ( $RSRZ > 2$ ). Stretches of 2 or more consecutive residues without any outlier are shown as a green connector. Residues present in the sample, but not in the model, are shown in grey.

- Molecule 1: Pre-mRNA-splicing factor 8



- Molecule 2: A1 cistron-splicing factor AAR2



## 4 Data and refinement statistics

Property	Value	Source
Space group	C 1 2 1	Depositor
Cell constants a, b, c, $\alpha$ , $\beta$ , $\gamma$	89.69Å 82.09Å 93.03Å 90.00° 108.25° 90.00°	Depositor
Resolution (Å)	44.83 – 1.71 44.83 – 1.71	Depositor EDS
% Data completeness (in resolution range)	98.6 (44.83-1.71) 98.7 (44.83-1.71)	Depositor EDS
$R_{merge}$	(Not available)	Depositor
$R_{sym}$	(Not available)	Depositor
$\langle I/\sigma(I) \rangle$ <sup>1</sup>	0.91 (at 1.71Å)	Xtrriage
Refinement program	PHENIX 1.17.1_3660	Depositor
R, $R_{free}$	0.295 , 0.322 0.301 , 0.322	Depositor DCC
$R_{free}$ test set	2099 reflections (3.08%)	wwPDB-VP
Wilson B-factor (Å <sup>2</sup> )	42.2	Xtrriage
Anisotropy	0.342	Xtrriage
Bulk solvent $k_{sol}$ (e/Å <sup>3</sup> ), $B_{sol}$ (Å <sup>2</sup> )	0.38 , 59.1	EDS
L-test for twinning <sup>2</sup>	$\langle  L  \rangle = 0.50$ , $\langle L^2 \rangle = 0.34$	Xtrriage
Estimated twinning fraction	No twinning to report.	Xtrriage
$F_o, F_c$ correlation	0.94	EDS
Total number of atoms	9189	wwPDB-VP
Average B, all atoms (Å <sup>2</sup> )	88.0	wwPDB-VP

Xtrriage's analysis on translational NCS is as follows: *The largest off-origin peak in the Patterson function is 5.74% of the height of the origin peak. No significant pseudotranslation is detected.*

<sup>1</sup>Intensities estimated from amplitudes.

<sup>2</sup>Theoretical values of  $\langle |L| \rangle$ ,  $\langle L^2 \rangle$  for acentric reflections are 0.5, 0.333 respectively for untwinned datasets, and 0.375, 0.2 for perfectly twinned datasets.

## 5 Model quality [i](#)

### 5.1 Standard geometry [i](#)

Bond lengths and bond angles in the following residue types are not validated in this section: VV5

The Z score for a bond length (or angle) is the number of standard deviations the observed value is removed from the expected value. A bond length (or angle) with  $|Z| > 5$  is considered an outlier worth inspection. RMSZ is the root-mean-square of all Z scores of the bond lengths (or angles).

Mol	Chain	Bond lengths		Bond angles	
		RMSZ	# $ Z  > 5$	RMSZ	# $ Z  > 5$
1	A	0.76	2/2149 (0.1%)	0.89	3/2911 (0.1%)
2	B	0.74	2/2739 (0.1%)	0.78	2/3699 (0.1%)
All	All	0.75	4/4888 (0.1%)	0.83	5/6610 (0.1%)

All (4) bond length outliers are listed below:

Mol	Chain	Res	Type	Atoms	Z	Observed(Å)	Ideal(Å)
1	A	1899[A]	TRP	CB-CG	5.86	1.60	1.50
1	A	1899[B]	TRP	CB-CG	5.86	1.60	1.50
2	B	105	TYR	CD2-CE2	5.46	1.47	1.39
2	B	78	TYR	CG-CD1	5.06	1.45	1.39

All (5) bond angle outliers are listed below:

Mol	Chain	Res	Type	Atoms	Z	Observed(°)	Ideal(°)
1	A	2008	LEU	CB-CG-CD1	-6.48	99.98	111.00
1	A	1986	MET	CG-SD-CE	-6.35	90.04	100.20
2	B	141	ASP	CB-CG-OD2	-6.15	112.77	118.30
1	A	1942	ASP	CB-CG-OD2	-5.58	113.27	118.30
2	B	268	LEU	CB-CG-CD2	-5.47	101.70	111.00

There are no chirality outliers.

There are no planarity outliers.

### 5.2 Too-close contacts [i](#)

In the following table, the Non-H and H(model) columns list the number of non-hydrogen atoms and hydrogen atoms in the chain respectively. The H(added) column lists the number of hydrogen atoms added and optimized by MolProbity. The Clashes column lists the number of clashes within

the asymmetric unit, whereas Symm-Clashes lists symmetry-related clashes.

Mol	Chain	Non-H	H(model)	H(added)	Clashes	Symm-Clashes
1	A	2008	2060	1974	21	0
2	B	2580	2464	2398	15	0
3	A	16	0	0	0	0
4	A	33	0	0	1	1
4	B	28	0	0	1	1
All	All	4665	4524	4372	36	1

The all-atom clashscore is defined as the number of clashes found per 1000 atoms (including hydrogen atoms). The all-atom clashscore for this structure is 4.

All (36) close contacts within the same asymmetric unit are listed below, sorted by their clash magnitude.

Atom-1	Atom-2	Interatomic distance (Å)	Clash overlap (Å)
1:A:1962:ARG:O	1:A:2013:ARG:NH1	2.23	0.71
1:A:2064:GLY:O	1:A:2068:ASN:N	2.25	0.69
2:B:1:MET:N	4:B:401:HOH:O	2.29	0.65
2:B:287:ARG:O	2:B:291:ILE:HD13	1.99	0.62
1:A:1977:VAL:HG21	1:A:1987:VAL:HG21	1.83	0.59
2:B:77:LEU:HD21	2:B:79:LYS:HE3	1.85	0.59
2:B:258:LYS:HD2	2:B:258:LYS:H	1.73	0.53
2:B:50:ASP:OD1	2:B:51:ASN:N	2.41	0.53
1:A:2061:THR:O	1:A:2064:GLY:N	2.41	0.50
2:B:1:MET:HB3	2:B:35:ASP:HA	1.95	0.49
2:B:70:GLN:HB3	2:B:81:MET:HE1	1.96	0.48
1:A:1913:THR:HB	1:A:1940:MET:HE1	1.96	0.48
1:A:1843:LEU:HA	1:A:1849:LYS:HD2	1.97	0.47
1:A:1848:ILE:H	1:A:1931[A]:LYS:HZ2	1.64	0.46
1:A:2058:LEU:C	1:A:2058:LEU:HD23	2.36	0.46
2:B:70:GLN:HB3	2:B:81:MET:CE	2.46	0.46
1:A:1962:ARG:HD3	1:A:1962:ARG:H	1.80	0.45
1:A:1895:HIS:O	1:A:1898[A]:VAL:HG22	2.17	0.45
1:A:1964:PRO:HG2	1:A:2012:LEU:HB2	1.99	0.44
1:A:2049:ILE:O	1:A:2053[A]:SER:OG	2.32	0.44
1:A:2035:LYS:HD3	1:A:2035:LYS:HA	1.73	0.44
1:A:1836:ASN:HB3	1:A:1960[A]:GLU:HB2	2.01	0.43
1:A:1859:ARG:HH12	1:A:1979[A]:MET:CE	2.31	0.43
2:B:37:PRO:HD3	2:B:105:TYR:CD1	2.53	0.43
1:A:1894:ILE:HA	4:A:2209:HOH:O	2.18	0.43
1:A:1946:VAL:O	1:A:1949:LEU:HG	2.19	0.42
1:A:1857:VAL:HG21	1:A:1913:THR:OG1	2.19	0.42

*Continued on next page...*



Continued from previous page...

Atom-1	Atom-2	Interatomic distance (Å)	Clash overlap (Å)
2:B:186:ARG:O	2:B:186:ARG:HD3	2.20	0.42
2:B:277:GLU:CD	2:B:277:GLU:H	2.23	0.42
2:B:53:SER:O	2:B:54[A]:MET:HB3	2.19	0.42
1:A:2066:LYS:HD2	1:A:2067:TYR:CE1	2.56	0.41
1:A:1999:ILE:HD13	1:A:1999:ILE:HG21	1.90	0.41
2:B:51:ASN:ND2	2:B:53:SER:O	2.53	0.41
2:B:256:VAL:O	2:B:257:PRO:C	2.59	0.40
1:A:1998:ARG:NE	1:A:2045:ASP:OD1	2.55	0.40

All (1) symmetry-related close contacts are listed below. The label for Atom-2 includes the symmetry operator and encoded unit-cell translations to be applied.

Atom-1	Atom-2	Interatomic distance (Å)	Clash overlap (Å)
4:A:2227:HOH:O	4:B:421:HOH:O[2_655]	2.08	0.12

## 5.3 Torsion angles [i](#)

### 5.3.1 Protein backbone [i](#)

In the following table, the Percentiles column shows the percent Ramachandran outliers of the chain as a percentile score with respect to all X-ray entries followed by that with respect to entries of similar resolution.

The Analysed column shows the number of residues for which the backbone conformation was analysed, and the total number of residues.

Mol	Chain	Analysed	Favoured	Allowed	Outliers	Percentiles
1	A	258/258 (100%)	245 (95%)	12 (5%)	1 (0%)	34 18
2	B	315/308 (102%)	302 (96%)	12 (4%)	1 (0%)	41 24
All	All	573/566 (101%)	547 (96%)	24 (4%)	2 (0%)	34 24

All (2) Ramachandran outliers are listed below:

Mol	Chain	Res	Type
1	A	2068	ASN
2	B	106	PRO

### 5.3.2 Protein sidechains [i](#)

In the following table, the Percentiles column shows the percent sidechain outliers of the chain as a percentile score with respect to all X-ray entries followed by that with respect to entries of similar resolution.

The Analysed column shows the number of residues for which the sidechain conformation was analysed, and the total number of residues.

Mol	Chain	Analysed	Rotameric	Outliers	Percentiles	
1	A	237/233 (102%)	229 (97%)	8 (3%)	37	16
2	B	294/284 (104%)	292 (99%)	2 (1%)	84	76
All	All	531/517 (103%)	521 (98%)	10 (2%)	67	39

All (10) residues with a non-rotameric sidechain are listed below:

Mol	Chain	Res	Type
1	A	1903	LYS
1	A	1962	ARG
1	A	1979[A]	MET
1	A	1979[B]	MET
1	A	1979[C]	MET
1	A	2053[A]	SER
1	A	2053[B]	SER
1	A	2066	LYS
2	B	77	LEU
2	B	281	ASP

Sometimes sidechains can be flipped to improve hydrogen bonding and reduce clashes. All (1) such sidechains are listed below:

Mol	Chain	Res	Type
2	B	150	ASN

### 5.3.3 RNA [i](#)

There are no RNA molecules in this entry.

## 5.4 Non-standard residues in protein, DNA, RNA chains [i](#)

There are no non-standard protein/DNA/RNA residues in this entry.

## 5.5 Carbohydrates [i](#)

There are no monosaccharides in this entry.

## 5.6 Ligand geometry [i](#)

1 ligand is modelled in this entry.

In the following table, the Counts columns list the number of bonds (or angles) for which Mogul statistics could be retrieved, the number of bonds (or angles) that are observed in the model and the number of bonds (or angles) that are defined in the Chemical Component Dictionary. The Link column lists molecule types, if any, to which the group is linked. The Z score for a bond length (or angle) is the number of standard deviations the observed value is removed from the expected value. A bond length (or angle) with  $|Z| > 2$  is considered an outlier worth inspection. RMSZ is the root-mean-square of all Z scores of the bond lengths (or angles).

Mol	Type	Chain	Res	Link	Bond lengths			Bond angles		
					Counts	RMSZ	# Z  > 2	Counts	RMSZ	# Z  > 2
3	VV5	A	2101	-	17,17,17	4.37	7 (41%)	16,21,21	1.57	2 (12%)

In the following table, the Chirals column lists the number of chiral outliers, the number of chiral centers analysed, the number of these observed in the model and the number defined in the Chemical Component Dictionary. Similar counts are reported in the Torsion and Rings columns. '-' means no outliers of that kind were identified.

Mol	Type	Chain	Res	Link	Chirals	Torsions	Rings
3	VV5	A	2101	-	-	0/9/10/10	0/2/2/2

All (7) bond length outliers are listed below:

Mol	Chain	Res	Type	Atoms	Z	Observed(Å)	Ideal(Å)
3	A	2101	VV5	C7-C8	-15.57	1.44	1.50
3	A	2101	VV5	C-C1	-4.17	1.30	1.38
3	A	2101	VV5	C9-C8	-3.91	1.27	1.37
3	A	2101	VV5	C8-S	-3.33	1.66	1.73
3	A	2101	VV5	O-C5	-2.99	1.17	1.23
3	A	2101	VV5	C1-C2	-2.90	1.34	1.39
3	A	2101	VV5	C-C4	2.58	1.45	1.37

All (2) bond angle outliers are listed below:

Mol	Chain	Res	Type	Atoms	Z	Observed(°)	Ideal(°)
3	A	2101	VV5	C-C1-C2	-4.05	115.55	120.34
3	A	2101	VV5	C1-C2-C3	3.08	121.12	117.63

There are no chirality outliers.

There are no torsion outliers.

There are no ring outliers.

No monomer is involved in short contacts.

## 5.7 Other polymers

There are no such residues in this entry.

## 5.8 Polymer linkage issues

There are no chain breaks in this entry.

## 6 Fit of model and data [i](#)

### 6.1 Protein, DNA and RNA chains [i](#)

In the following table, the column labelled ‘#RSRZ > 2’ contains the number (and percentage) of RSRZ outliers, followed by percent RSRZ outliers for the chain as percentile scores relative to all X-ray entries and entries of similar resolution. The OWAB column contains the minimum, median, 95<sup>th</sup> percentile and maximum values of the occupancy-weighted average B-factor per residue. The column labelled ‘Q < 0.9’ lists the number of (and percentage) of residues with an average occupancy less than 0.9.

Mol	Chain	Analysed	<RSRZ>	#RSRZ>2	OWAB(Å <sup>2</sup> )	Q<0.9
1	A	237/258 (91%)	1.59	64 (27%) 0 0	38, 71, 137, 220	0
2	B	300/308 (97%)	1.69	95 (31%) 0 0	37, 75, 144, 208	0
All	All	537/566 (94%)	1.65	159 (29%) 0 0	37, 72, 140, 220	0

All (159) RSRZ outliers are listed below:

Mol	Chain	Res	Type	RSRZ
2	B	53	SER	12.3
2	B	170	SER	10.1
1	A	2069	VAL	9.5
2	B	172	PRO	9.1
2	B	52	SER	9.0
2	B	171	ASP	8.4
1	A	2028	SER	8.0
1	A	1989	PHE	7.7
1	A	1833	GLY	7.4
2	B	111	ASP	7.2
2	B	1	MET	6.8
2	B	173	ALA	6.7
1	A	1878	CYS	6.5
1	A	1866	PHE	6.3
2	B	109	ASP	6.3
2	B	174	HIS	5.9
1	A	2063	TYR	5.7
1	A	2065	ARG	5.7
2	B	107	LYS	5.6
1	A	1834	ALA	5.6
2	B	108	ILE	5.4
2	B	152	LEU	5.4
1	A	1836	ASN	5.3
2	B	279	TYR	5.1

*Continued on next page...*

*Continued from previous page...*

<b>Mol</b>	<b>Chain</b>	<b>Res</b>	<b>Type</b>	<b>RSRZ</b>
1	A	1838	SER	5.1
2	B	101	MET	4.8
1	A	2068	ASN	4.7
2	B	110	GLU	4.6
1	A	1997	ASP	4.5
1	A	2027	LEU	4.4
2	B	150	ASN	4.3
1	A	2060	LEU	4.3
2	B	89	PHE	4.2
1	A	2046	GLU	4.1
2	B	275	LEU	4.1
2	B	148	GLN	4.1
1	A	2064	GLY	4.1
2	B	151	GLU	4.0
2	B	269	TYR	4.0
1	A	1962	ARG	4.0
1	A	1905	LEU	3.9
1	A	2043	PHE	3.9
1	A	1924	LEU	3.8
2	B	228	PHE	3.8
1	A	2037	TYR	3.7
1	A	2024[A]	MET	3.7
2	B	149	GLU	3.7
2	B	132	LYS	3.7
1	A	2005	PHE	3.6
2	B	96	PHE	3.6
1	A	1862	VAL	3.6
1	A	2032	ILE	3.6
2	B	30	PHE	3.5
1	A	2015	LEU	3.5
2	B	106	PRO	3.5
2	B	313	TYR	3.5
1	A	2039	LEU	3.5
2	B	147	VAL	3.5
2	B	50	ASP	3.5
1	A	1837	SER	3.4
2	B	94	HIS	3.4
2	B	54[A]	MET	3.3
1	A	2051	ILE	3.3
2	B	131	ARG	3.3
2	B	293	LEU	3.3
2	B	49	ALA	3.2

*Continued on next page...*

*Continued from previous page...*

<b>Mol</b>	<b>Chain</b>	<b>Res</b>	<b>Type</b>	<b>RSRZ</b>
2	B	93	VAL	3.2
2	B	25	LYS	3.2
2	B	77	LEU	3.2
2	B	214	PHE	3.2
1	A	2067	TYR	3.2
2	B	181	ILE	3.1
1	A	1865	THR	3.1
1	A	2062	GLU	3.1
1	A	1996	LEU	3.1
2	B	103	VAL	3.1
2	B	254	ALA	3.1
1	A	2018[A]	ASN	3.0
2	B	122[A]	GLN	3.0
2	B	51	ASN	2.9
1	A	1840	TYR	2.9
2	B	276	PRO	2.9
2	B	38	ILE	2.9
2	B	46	PHE	2.9
1	A	2059	ILE	2.9
2	B	213	ILE	2.9
2	B	22	PHE	2.9
1	A	2044	THR	2.9
1	A	1898[A]	VAL	2.9
2	B	286	GLU	2.9
2	B	99	ARG	2.9
2	B	209	MET	2.9
2	B	13	VAL	2.8
2	B	316	LEU	2.8
1	A	1953	ASN	2.8
2	B	282	ILE	2.7
1	A	1998	ARG	2.7
2	B	235	GLY	2.7
2	B	191	PRO	2.7
2	B	146	THR	2.7
1	A	1969	MET	2.7
2	B	41[A]	VAL	2.7
2	B	284	LEU	2.7
1	A	2066	LYS	2.7
1	A	1979[A]	MET	2.6
1	A	1904	ARG	2.6
2	B	97	LYS	2.6
2	B	317	LEU	2.6

*Continued on next page...*

*Continued from previous page...*

<b>Mol</b>	<b>Chain</b>	<b>Res</b>	<b>Type</b>	<b>RSRZ</b>
2	B	203[A]	TYR	2.6
2	B	206	ASN	2.6
1	A	1975	SER	2.6
1	A	2040	TRP	2.5
1	A	2057[A]	ASP	2.5
2	B	18	ASP	2.5
2	B	246	MET	2.5
1	A	1959	THR	2.5
1	A	1835	MET	2.5
2	B	104	SER	2.5
2	B	133	ASP	2.5
1	A	1995	TRP	2.5
2	B	291	ILE	2.5
2	B	86	GLY	2.5
2	B	212[A]	GLY	2.5
1	A	1886	THR	2.4
2	B	84	ARG	2.4
1	A	1999	ILE	2.4
1	A	2002[A]	TYR	2.4
2	B	117	LEU	2.4
2	B	196	GLU	2.4
2	B	280	SER	2.4
1	A	1863	HIS	2.3
2	B	91	ASN	2.3
2	B	281	ASP	2.3
2	B	100	GLN	2.3
2	B	288	VAL	2.3
1	A	1956	ILE	2.3
2	B	252	SER	2.3
2	B	92	ILE	2.3
1	A	1961[A]	LEU	2.2
1	A	2048	TRP	2.2
1	A	2036	SER	2.2
2	B	295	SER	2.2
1	A	1986	MET	2.2
2	B	241	LEU	2.2
2	B	268	LEU	2.2
1	A	1841	ALA	2.2
2	B	234	PHE	2.2
2	B	292	CYS	2.2
2	B	64[A]	MET	2.2
1	A	2058	LEU	2.2

*Continued on next page...*



*Continued from previous page...*

Mol	Chain	Res	Type	RSRZ
2	B	300	ASN	2.2
2	B	87	ALA	2.2
2	B	208	VAL	2.1
2	B	88	LYS	2.1
2	B	121	VAL	2.1
1	A	1911	TRP	2.0
1	A	2047	GLN	2.0
2	B	28	GLN	2.0
2	B	232	MET	2.0

## 6.2 Non-standard residues in protein, DNA, RNA chains [i](#)

There are no non-standard protein/DNA/RNA residues in this entry.

## 6.3 Carbohydrates [i](#)

There are no monosaccharides in this entry.

## 6.4 Ligands [i](#)

In the following table, the Atoms column lists the number of modelled atoms in the group and the number defined in the chemical component dictionary. The B-factors column lists the minimum, median, 95<sup>th</sup> percentile and maximum values of B factors of atoms in the group. The column labelled 'Q<0.9' lists the number of atoms with occupancy less than 0.9.

Mol	Type	Chain	Res	Atoms	RSCC	RSR	B-factors( $\text{\AA}^2$ )	Q<0.9
3	VV5	A	2101	16/16	0.88	0.26	20,20,20,20	0

## 6.5 Other polymers [i](#)

There are no such residues in this entry.