



# Full wwPDB X-ray Structure Validation Report ⓘ

Mar 27, 2023 – 02:46 PM EDT

PDB ID : 8FM7  
Title : HIV-1 gp120 complex with CJF-III-192  
Authors : Gong, Z.; Hendrickson, W.A.  
Deposited on : 2022-12-22  
Resolution : 2.34 Å(reported)

This is a Full wwPDB X-ray Structure Validation Report for a publicly released PDB entry.

We welcome your comments at [validation@mail.wwpdb.org](mailto:validation@mail.wwpdb.org)

A user guide is available at

<https://www.wwpdb.org/validation/2017/XrayValidationReportHelp>

with specific help available everywhere you see the ⓘ symbol.

The types of validation reports are described at

<http://www.wwpdb.org/validation/2017/FAQs#types>.

---

The following versions of software and data (see [references ⓘ](#)) were used in the production of this report:

MolProbity : 4.02b-467  
Mogul : 1.8.5 (274361), CSD as541be (2020)  
Xtriage (Phenix) : 1.13  
EDS : 2.32.2  
buster-report : 1.1.7 (2018)  
Percentile statistics : 20191225.v01 (using entries in the PDB archive December 25th 2019)  
Refmac : 5.8.0158  
CCP4 : 7.0.044 (Gargrove)  
Ideal geometry (proteins) : Engh & Huber (2001)  
Ideal geometry (DNA, RNA) : Parkinson et al. (1996)  
Validation Pipeline (wwPDB-VP) : 2.32.2

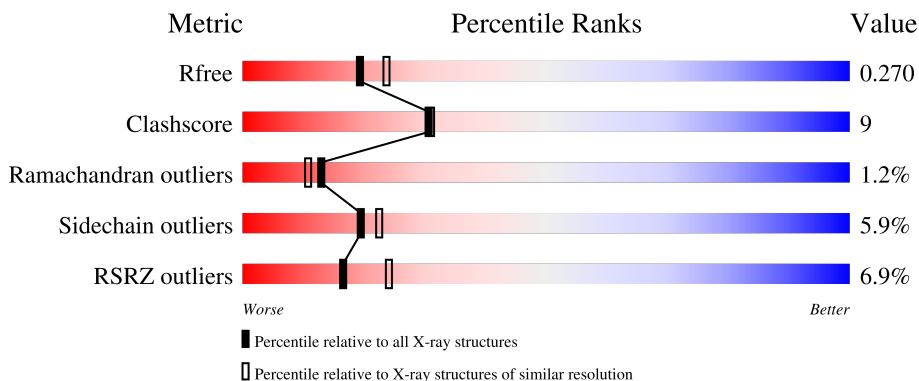
# 1 Overall quality at a glance

The following experimental techniques were used to determine the structure:

*X-RAY DIFFRACTION*

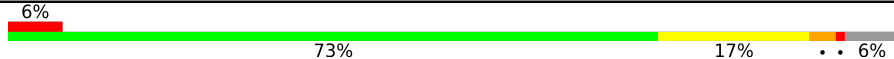



The reported resolution of this entry is 2.34 Å.

Percentile scores (ranging between 0-100) for global validation metrics of the entry are shown in the following graphic. The table shows the number of entries on which the scores are based.



Metric	Whole archive (#Entries)	Similar resolution (#Entries, resolution range(Å))
$R_{free}$	130704	2096 (2.36-2.32)
Clashscore	141614	2193 (2.36-2.32)
Ramachandran outliers	138981	2159 (2.36-2.32)
Sidechain outliers	138945	2160 (2.36-2.32)
RSRZ outliers	127900	2067 (2.36-2.32)

The table below summarises the geometric issues observed across the polymeric chains and their fit to the electron density. The red, orange, yellow and green segments of the lower bar indicate the fraction of residues that contain outliers for  $\geq 3$ , 2, 1 and 0 types of geometric quality criteria respectively. A grey segment represents the fraction of residues that are not modelled. The numeric value for each fraction is indicated below the corresponding segment, with a dot representing fractions  $\leq 5\%$ . The upper red bar (where present) indicates the fraction of residues that have poor fit to the electron density. The numeric value is given above the bar.

Mol	Chain	Length	Quality of chain
1	A	358	 6% 73% 17% 6%
1	B	358	 8% 71% 19% 6%
1	C	358	 5% 70% 20% 6%
1	D	358	 7% 70% 20% 6%

## 2 Entry composition [i](#)

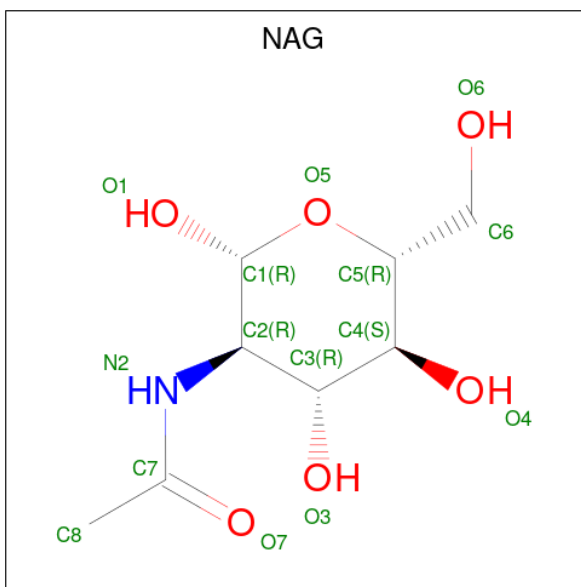
There are 4 unique types of molecules in this entry. The entry contains 11232 atoms, of which 0 are hydrogens and 0 are deuteriums.

In the tables below, the ZeroOcc column contains the number of atoms modelled with zero occupancy, the AltConf column contains the number of residues with at least one atom in alternate conformation and the Trace column contains the number of residues modelled with at most 2 atoms.

- Molecule 1 is a protein called Envelope glycoprotein gp120.

Mol	Chain	Residues	Atoms					ZeroOcc	AltConf	Trace
			Total	C	N	O	S			
1	A	335	Total 2627	C 1642	N 459	O 506	S 20	0	0	0
1	B	335	Total 2627	C 1642	N 459	O 506	S 20	0	0	0
1	C	335	Total 2627	C 1642	N 459	O 506	S 20	0	0	0
1	D	335	Total 2627	C 1642	N 459	O 506	S 20	0	0	0

- Molecule 2 is 2-acetamido-2-deoxy-beta-D-glucopyranose (three-letter code: NAG) (formula: C<sub>8</sub>H<sub>15</sub>NO<sub>6</sub>).



Mol	Chain	Residues	Atoms				ZeroOcc	AltConf
			Total	C	N	O		
2	A	1	Total 14	C 8	N 1	O 5	0	0
2	A	1	Total 14	C 8	N 1	O 5	0	0

*Continued on next page...*

*Continued from previous page...*

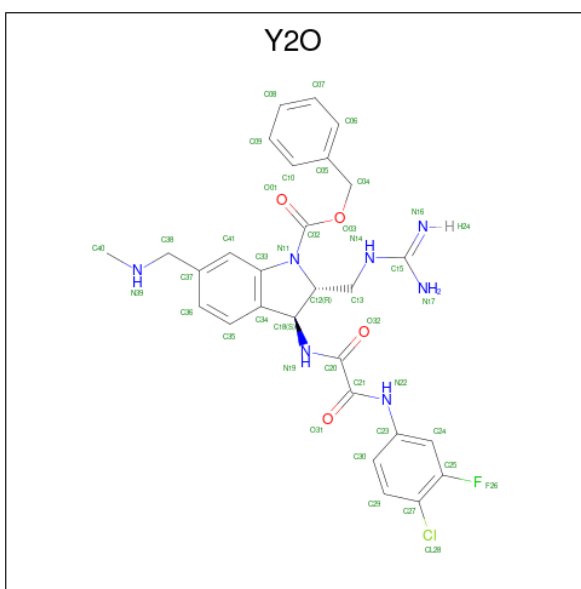
Mol	Chain	Residues	Atoms				ZeroOcc	AltConf
2	A	1	Total	C	N	O	0	0
			14	8	1	5		
2	A	1	Total	C	N	O	0	0
			14	8	1	5		
2	A	1	Total	C	N	O	0	0
			14	8	1	5		
2	A	1	Total	C	N	O	0	0
			14	8	1	5		
2	B	1	Total	C	N	O	0	0
			14	8	1	5		
2	B	1	Total	C	N	O	0	0
			14	8	1	5		
2	B	1	Total	C	N	O	0	0
			14	8	1	5		
2	B	1	Total	C	N	O	0	0
			14	8	1	5		
2	B	1	Total	C	N	O	0	0
			14	8	1	5		
2	B	1	Total	C	N	O	0	0
			14	8	1	5		
2	C	1	Total	C	N	O	0	0
			14	8	1	5		
2	C	1	Total	C	N	O	0	0
			14	8	1	5		
2	C	1	Total	C	N	O	0	0
			14	8	1	5		
2	C	1	Total	C	N	O	0	0
			14	8	1	5		
2	C	1	Total	C	N	O	0	0
			14	8	1	5		
2	C	1	Total	C	N	O	0	0
			14	8	1	5		
2	D	1	Total	C	N	O	0	0
			14	8	1	5		
2	D	1	Total	C	N	O	0	0
			14	8	1	5		
2	D	1	Total	C	N	O	0	0
			14	8	1	5		

*Continued on next page...*

Continued from previous page...

Mol	Chain	Residues	Atoms				ZeroOcc	AltConf
2	D	1	Total	C	N	O	0	0
			14	8	1	5		
2	D	1	Total	C	N	O	0	0
			14	8	1	5		
2	D	1	Total	C	N	O	0	0
			14	8	1	5		

- Molecule 3 is benzyl (2R,3S)-2-(carbamimidamidomethyl)-3-[2-(4-chloro-3-fluoroanilino)(oxo)acetamido]-6-[(methylamino)methyl]-2,3-dihydro-1H-indole-1-carboxylate (three-letter code: Y2O) (formula: C<sub>28</sub>H<sub>29</sub>ClFN<sub>7</sub>O<sub>4</sub>) (labeled as "Ligand of Interest" by depositor).



Mol	Chain	Residues	Atoms					ZeroOcc	AltConf	
3	A	1	Total	C	Cl	F	N	O	0	0
			41	28	1	1	7	4		
3	B	1	Total	C	Cl	F	N	O	0	0
			41	28	1	1	7	4		
3	C	1	Total	C	Cl	F	N	O	0	0
			41	28	1	1	7	4		
3	D	1	Total	C	Cl	F	N	O	0	0
			41	28	1	1	7	4		

- Molecule 4 is water.

Mol	Chain	Residues	Atoms		ZeroOcc	AltConf
4	A	40	Total	O	0	0
			40	40		

Continued on next page...

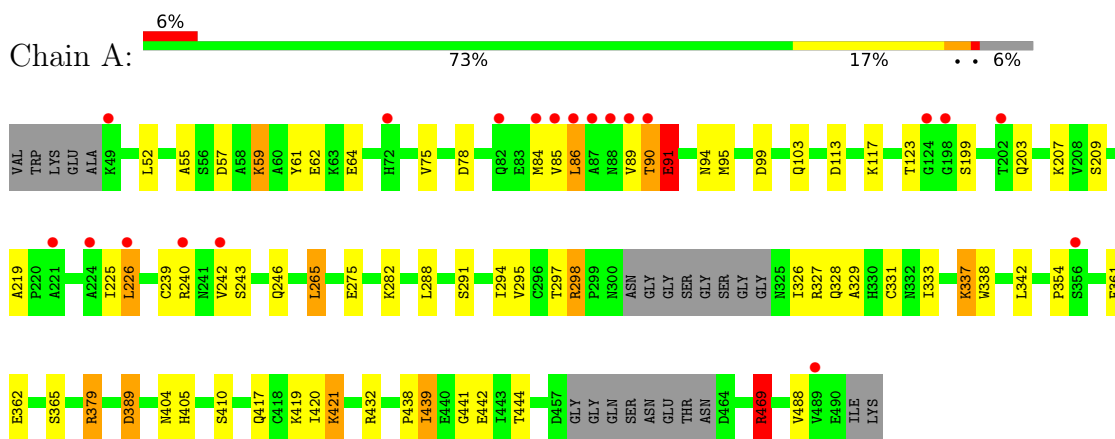
*Continued from previous page...*

<b>Mol</b>	<b>Chain</b>	<b>Residues</b>	<b>Atoms</b>		<b>ZeroOcc</b>	<b>AltConf</b>
4	B	42	Total 42	O 42	0	0
4	C	56	Total 56	O 56	0	0
4	D	58	Total 58	O 58	0	0

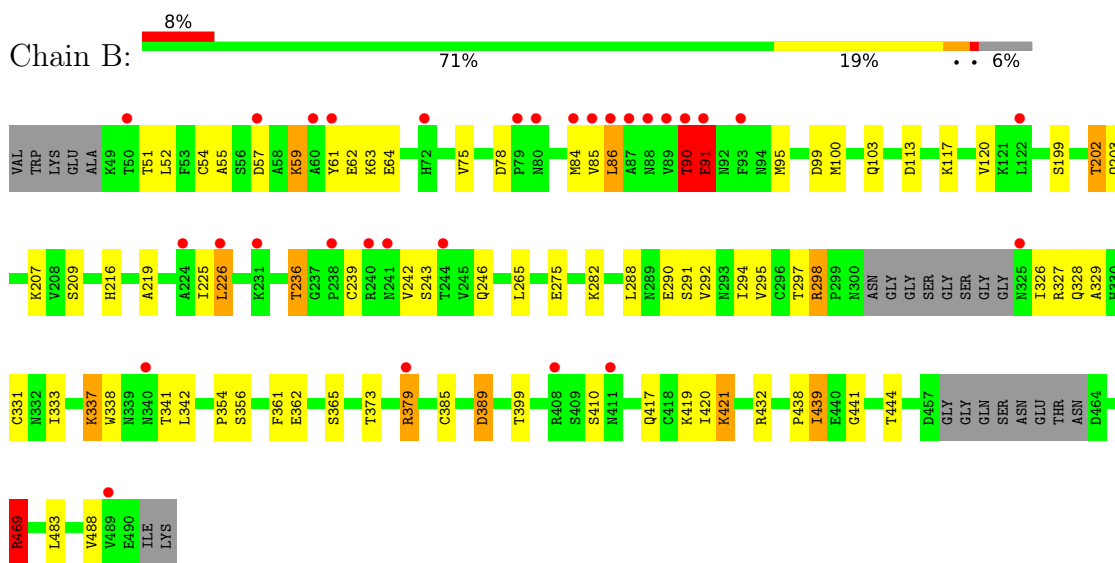
### 3 Residue-property plots [i](#)

These plots are drawn for all protein, RNA, DNA and oligosaccharide chains in the entry. The first graphic for a chain summarises the proportions of the various outlier classes displayed in the second graphic. The second graphic shows the sequence view annotated by issues in geometry and electron density. Residues are color-coded according to the number of geometric quality criteria for which they contain at least one outlier: green = 0, yellow = 1, orange = 2 and red = 3 or more. A red dot above a residue indicates a poor fit to the electron density ( $RSRZ > 2$ ). Stretches of 2 or more consecutive residues without any outlier are shown as a green connector. Residues present in the sample, but not in the model, are shown in grey.

- Molecule 1: Envelope glycoprotein gp120

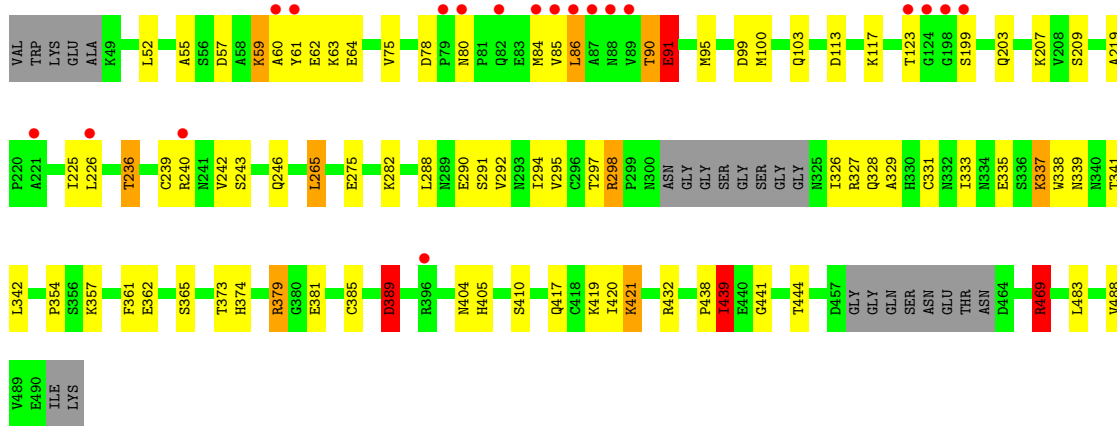


- Molecule 1: Envelope glycoprotein gp120

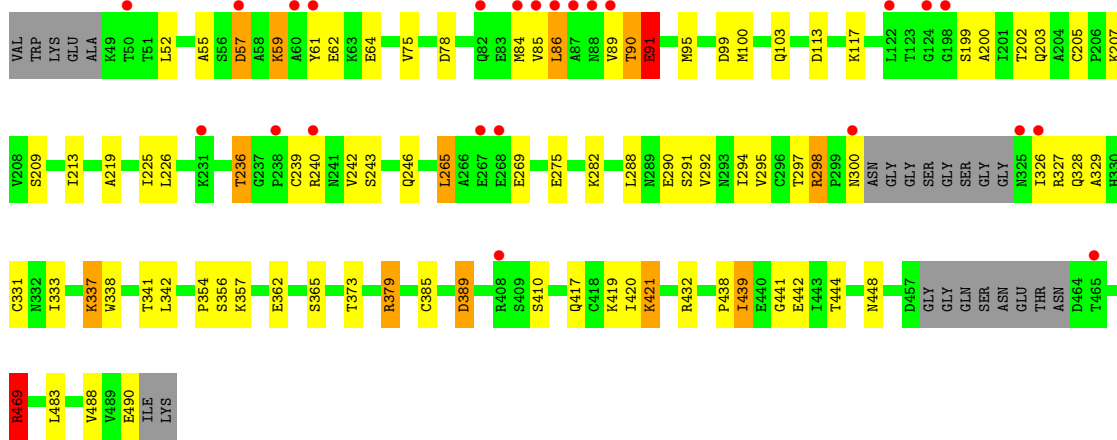


- Molecule 1: Envelope glycoprotein gp120





• Molecule 1: Envelope glycoprotein gp120





## 4 Data and refinement statistics

Property	Value	Source
Space group	P 21 21 21	Depositor
Cell constants a, b, c, $\alpha$ , $\beta$ , $\gamma$	72.36Å 121.10Å 195.11Å 90.00° 90.00° 90.00°	Depositor
Resolution (Å)	48.78 – 2.34 48.78 – 2.34	Depositor EDS
% Data completeness (in resolution range)	67.6 (48.78-2.34) 67.6 (48.78-2.34)	Depositor EDS
$R_{merge}$	0.26	Depositor
$R_{sym}$	(Not available)	Depositor
$\langle I/\sigma(I) \rangle$ <sup>1</sup>	1.55 (at 2.34Å)	Xtrriage
Refinement program	PHENIX 1.20rc3_4406	Depositor
R, $R_{free}$	0.237 , 0.271 0.235 , 0.270	Depositor DCC
$R_{free}$ test set	1999 reflections (4.06%)	wwPDB-VP
Wilson B-factor (Å <sup>2</sup> )	38.0	Xtrriage
Anisotropy	0.056	Xtrriage
Bulk solvent $k_{sol}$ (e/Å <sup>3</sup> ), $B_{sol}$ (Å <sup>2</sup> )	0.35 , 38.3	EDS
L-test for twinning <sup>2</sup>	$\langle  L  \rangle = 0.49$ , $\langle L^2 \rangle = 0.32$	Xtrriage
Estimated twinning fraction	No twinning to report.	Xtrriage
$F_o, F_c$ correlation	0.91	EDS
Total number of atoms	11232	wwPDB-VP
Average B, all atoms (Å <sup>2</sup> )	41.0	wwPDB-VP

Xtrriage's analysis on translational NCS is as follows: *The largest off-origin peak in the Patterson function is 17.93% of the height of the origin peak. No significant pseudotranslation is detected.*

<sup>1</sup>Intensities estimated from amplitudes.

<sup>2</sup>Theoretical values of  $\langle |L| \rangle$ ,  $\langle L^2 \rangle$  for acentric reflections are 0.5, 0.333 respectively for untwinned datasets, and 0.375, 0.2 for perfectly twinned datasets.

## 5 Model quality [i](#)

### 5.1 Standard geometry [i](#)

Bond lengths and bond angles in the following residue types are not validated in this section: Y2O, NAG

The Z score for a bond length (or angle) is the number of standard deviations the observed value is removed from the expected value. A bond length (or angle) with  $|Z| > 5$  is considered an outlier worth inspection. RMSZ is the root-mean-square of all Z scores of the bond lengths (or angles).

Mol	Chain	Bond lengths		Bond angles	
		RMSZ	# Z  >5	RMSZ	# Z  >5
1	A	0.61	2/2682 (0.1%)	0.90	13/3640 (0.4%)
1	B	0.61	2/2682 (0.1%)	0.90	13/3640 (0.4%)
1	C	0.61	2/2682 (0.1%)	0.90	13/3640 (0.4%)
1	D	0.61	2/2682 (0.1%)	0.90	13/3640 (0.4%)
All	All	0.61	8/10728 (0.1%)	0.90	52/14560 (0.4%)

All (8) bond length outliers are listed below:

Mol	Chain	Res	Type	Atoms	Z	Observed(Å)	Ideal(Å)
1	D	59	LYS	CA-CB	-5.70	1.41	1.53
1	B	59	LYS	CA-CB	-5.68	1.41	1.53
1	C	59	LYS	CA-CB	-5.68	1.41	1.53
1	A	59	LYS	CA-CB	-5.66	1.41	1.53
1	B	59	LYS	CB-CG	-5.51	1.37	1.52
1	D	59	LYS	CB-CG	-5.51	1.37	1.52
1	A	59	LYS	CB-CG	-5.50	1.37	1.52
1	C	59	LYS	CB-CG	-5.48	1.37	1.52

All (52) bond angle outliers are listed below:

Mol	Chain	Res	Type	Atoms	Z	Observed(°)	Ideal(°)
1	A	288	LEU	CB-CG-CD2	-10.65	92.90	111.00
1	C	288	LEU	CB-CG-CD2	-10.64	92.91	111.00
1	B	288	LEU	CB-CG-CD2	-10.63	92.92	111.00
1	D	288	LEU	CB-CG-CD2	-10.63	92.92	111.00
1	A	95	MET	CG-SD-CE	6.58	110.73	100.20
1	C	95	MET	CG-SD-CE	6.58	110.72	100.20
1	B	95	MET	CG-SD-CE	6.56	110.69	100.20
1	D	95	MET	CG-SD-CE	6.55	110.68	100.20
1	D	78	ASP	CB-CG-OD2	6.50	124.15	118.30

*Continued on next page...*

*Continued from previous page...*

Mol	Chain	Res	Type	Atoms	Z	Observed(°)	Ideal(°)
1	B	78	ASP	CB-CG-OD2	6.46	124.11	118.30
1	A	78	ASP	CB-CG-OD2	6.46	124.11	118.30
1	A	59	LYS	CG-CD-CE	-6.45	92.54	111.90
1	C	59	LYS	CG-CD-CE	-6.45	92.54	111.90
1	C	78	ASP	CB-CG-OD2	6.45	124.10	118.30
1	D	59	LYS	CG-CD-CE	-6.45	92.56	111.90
1	B	59	LYS	CG-CD-CE	-6.43	92.60	111.90
1	C	86	LEU	CA-CB-CG	5.61	128.21	115.30
1	B	86	LEU	CA-CB-CG	5.61	128.20	115.30
1	A	86	LEU	CA-CB-CG	5.61	128.19	115.30
1	D	86	LEU	CA-CB-CG	5.60	128.19	115.30
1	B	469	ARG	CG-CD-NE	-5.42	100.43	111.80
1	D	469	ARG	CG-CD-NE	-5.41	100.43	111.80
1	A	469	ARG	CG-CD-NE	-5.41	100.45	111.80
1	C	469	ARG	CG-CD-NE	-5.41	100.44	111.80
1	D	84	MET	CG-SD-CE	5.39	108.82	100.20
1	C	84	MET	CG-SD-CE	5.38	108.81	100.20
1	B	84	MET	CG-SD-CE	5.36	108.77	100.20
1	A	84	MET	CG-SD-CE	5.34	108.74	100.20
1	C	432	ARG	CB-CG-CD	5.31	125.40	111.60
1	D	432	ARG	CB-CG-CD	5.31	125.40	111.60
1	B	432	ARG	CB-CG-CD	5.29	125.36	111.60
1	A	432	ARG	CB-CG-CD	5.29	125.36	111.60
1	B	91	GLU	CA-CB-CG	5.26	124.98	113.40
1	A	91	GLU	CA-CB-CG	5.25	124.96	113.40
1	D	91	GLU	CA-CB-CG	5.25	124.95	113.40
1	C	91	GLU	CA-CB-CG	5.23	124.90	113.40
1	D	337	LYS	CA-CB-CG	-5.22	101.91	113.40
1	A	337	LYS	CA-CB-CG	-5.21	101.94	113.40
1	C	337	LYS	CA-CB-CG	-5.21	101.94	113.40
1	B	337	LYS	CA-CB-CG	-5.20	101.96	113.40
1	A	337	LYS	CD-CE-NZ	5.18	123.63	111.70
1	C	337	LYS	CD-CE-NZ	5.17	123.60	111.70
1	B	389	ASP	CB-CG-OD1	5.17	122.95	118.30
1	A	389	ASP	CB-CG-OD1	5.16	122.95	118.30
1	B	337	LYS	CD-CE-NZ	5.16	123.56	111.70
1	D	337	LYS	CD-CE-NZ	5.16	123.56	111.70
1	C	389	ASP	CB-CG-OD1	5.15	122.94	118.30
1	D	389	ASP	CB-CG-OD1	5.11	122.90	118.30
1	D	421	LYS	CG-CD-CE	-5.04	96.79	111.90
1	B	421	LYS	CG-CD-CE	-5.03	96.81	111.90
1	A	421	LYS	CG-CD-CE	-5.01	96.86	111.90

*Continued on next page...*

*Continued from previous page...*

Mol	Chain	Res	Type	Atoms	Z	Observed(°)	Ideal(°)
1	C	421	LYS	CG-CD-CE	-5.01	96.87	111.90

There are no chirality outliers.

There are no planarity outliers.

## 5.2 Too-close contacts [i](#)

In the following table, the Non-H and H(model) columns list the number of non-hydrogen atoms and hydrogen atoms in the chain respectively. The H(added) column lists the number of hydrogen atoms added and optimized by MolProbity. The Clashes column lists the number of clashes within the asymmetric unit, whereas Symm-Clashes lists symmetry-related clashes.

Mol	Chain	Non-H	H(model)	H(added)	Clashes	Symm-Clashes
1	A	2627	0	2540	35	1
1	B	2627	0	2542	40	1
1	C	2627	0	2540	80	0
1	D	2627	0	2542	77	1
2	A	98	0	91	3	0
2	B	84	0	78	1	0
2	C	98	0	91	4	0
2	D	84	0	78	1	1
3	A	41	0	0	0	0
3	B	41	0	0	0	0
3	C	41	0	0	0	0
3	D	41	0	0	0	0
4	A	40	0	0	0	0
4	B	42	0	0	0	0
4	C	56	0	0	2	0
4	D	58	0	0	4	0
All	All	11232	0	10502	199	2

The all-atom clashscore is defined as the number of clashes found per 1000 atoms (including hydrogen atoms). The all-atom clashscore for this structure is 9.

All (199) close contacts within the same asymmetric unit are listed below, sorted by their clash magnitude.

Atom-1	Atom-2	Interatomic distance (Å)	Clash overlap (Å)
1:C:60:ALA:C	1:D:59:LYS:HE3	1.75	1.05
1:C:80:ASN:ND2	1:D:300:ASN:HB2	1.73	1.03
1:C:61:TYR:HB3	1:D:59:LYS:HE2	1.45	0.98

*Continued on next page...*

*Continued from previous page...*

Atom-1	Atom-2	Interatomic distance (Å)	Clash overlap (Å)
1:C:60:ALA:O	1:D:59:LYS:NZ	1.99	0.96
1:C:80:ASN:HB2	1:D:442:GLU:HB3	1.55	0.89
1:C:60:ALA:C	1:D:59:LYS:CE	2.41	0.87
1:B:326:ILE:HD12	1:B:326:ILE:H	1.43	0.84
1:A:326:ILE:H	1:A:326:ILE:HD12	1.43	0.83
1:D:326:ILE:H	1:D:326:ILE:HD12	1.43	0.83
1:C:326:ILE:HD12	1:C:326:ILE:H	1.43	0.82
1:C:61:TYR:N	1:D:59:LYS:HE3	1.97	0.79
1:C:61:TYR:N	1:D:59:LYS:CE	2.51	0.74
1:C:80:ASN:ND2	1:D:300:ASN:CB	2.51	0.72
1:C:275:GLU:OE1	1:C:282:LYS:HE3	1.90	0.71
1:A:275:GLU:OE1	1:A:282:LYS:HE3	1.90	0.71
1:D:275:GLU:OE1	1:D:282:LYS:HE3	1.90	0.71
1:B:275:GLU:OE1	1:B:282:LYS:HE3	1.90	0.71
1:C:61:TYR:CB	1:D:59:LYS:HE2	2.20	0.70
1:C:374:HIS:NE2	4:C:601:HOH:O	2.25	0.69
1:C:61:TYR:CZ	1:D:213:ILE:HG22	2.28	0.68
1:D:490:GLU:O	4:D:602:HOH:O	2.11	0.67
1:A:379:ARG:NH1	1:A:444:THR:O	2.29	0.66
1:A:59:LYS:HD3	1:A:61:TYR:CZ	2.31	0.66
1:B:379:ARG:NH1	1:B:444:THR:O	2.29	0.66
1:D:379:ARG:NH1	1:D:444:THR:O	2.29	0.66
1:C:59:LYS:HD3	1:C:61:TYR:CZ	2.31	0.66
1:C:379:ARG:NH1	1:C:444:THR:O	2.29	0.66
1:B:59:LYS:HD3	1:B:61:TYR:CZ	2.31	0.65
1:C:80:ASN:HD22	1:D:442:GLU:CB	2.09	0.65
1:D:59:LYS:HD3	1:D:61:TYR:CZ	2.31	0.65
1:C:265:LEU:HD21	1:C:291:SER:HB3	1.79	0.65
1:D:265:LEU:HD21	1:D:291:SER:HB3	1.79	0.65
1:C:60:ALA:CA	1:D:59:LYS:HE3	2.27	0.64
1:C:80:ASN:CB	1:D:442:GLU:HB3	2.26	0.64
1:A:265:LEU:HD21	1:A:291:SER:HB3	1.79	0.64
1:C:61:TYR:HB2	1:D:57:ASP:O	1.97	0.64
1:B:294:ILE:HD12	1:B:333:ILE:HD11	1.81	0.63
1:D:294:ILE:HD12	1:D:333:ILE:HD11	1.81	0.63
1:C:294:ILE:HD12	1:C:333:ILE:HD11	1.81	0.62
1:A:294:ILE:HD12	1:A:333:ILE:HD11	1.81	0.61
1:A:404:ASN:HD22	2:C:505:NAG:H62	1.65	0.61
1:D:448:ASN:ND2	4:D:601:HOH:O	2.10	0.59
1:B:52:LEU:HD21	1:B:488:VAL:HG21	1.85	0.58
1:D:52:LEU:HD21	1:D:488:VAL:HG21	1.85	0.58

*Continued on next page...*

*Continued from previous page...*

Atom-1	Atom-2	Interatomic distance (Å)	Clash overlap (Å)
1:A:52:LEU:HD21	1:A:488:VAL:HG21	1.85	0.58
1:C:60:ALA:CB	1:D:59:LYS:HE3	2.33	0.58
1:C:298:ARG:HG2	1:C:328:GLN:O	2.04	0.58
1:A:298:ARG:HG2	1:A:328:GLN:O	2.04	0.57
1:C:52:LEU:HD21	1:C:488:VAL:HG21	1.85	0.57
1:B:298:ARG:HG2	1:B:328:GLN:O	2.04	0.57
1:C:117:LYS:HD3	1:C:203:GLN:OE1	2.05	0.57
1:D:298:ARG:HG2	1:D:328:GLN:O	2.04	0.57
1:B:117:LYS:HD3	1:B:203:GLN:OE1	2.05	0.56
1:C:207:LYS:HD2	1:C:439:ILE:CG2	2.36	0.56
1:D:117:LYS:HD3	1:D:203:GLN:OE1	2.05	0.56
1:B:207:LYS:HD2	1:B:439:ILE:CG2	2.37	0.55
1:A:117:LYS:HD3	1:A:203:GLN:OE1	2.05	0.55
1:C:60:ALA:HB3	1:D:59:LYS:HE3	1.89	0.55
1:D:207:LYS:HD2	1:D:439:ILE:CG2	2.37	0.54
1:C:60:ALA:C	1:D:59:LYS:NZ	2.56	0.54
1:C:61:TYR:CA	1:D:59:LYS:CE	2.85	0.54
1:A:207:LYS:HD2	1:A:439:ILE:CG2	2.37	0.54
1:B:219:ALA:HB2	1:B:225:ILE:HG13	1.89	0.54
1:C:80:ASN:HD22	1:D:442:GLU:HB3	1.72	0.54
1:D:326:ILE:HG22	1:D:438:PRO:HG2	1.90	0.54
1:A:326:ILE:HG22	1:A:438:PRO:HG2	1.90	0.54
1:A:419:LYS:HD3	1:A:421:LYS:HG3	1.90	0.54
1:B:419:LYS:HD3	1:B:421:LYS:HG3	1.90	0.54
1:D:219:ALA:HB2	1:D:225:ILE:HG13	1.89	0.53
1:D:419:LYS:HD3	1:D:421:LYS:HG3	1.90	0.53
1:A:219:ALA:HB2	1:A:225:ILE:HG13	1.89	0.53
2:A:505:NAG:H62	1:C:404:ASN:HD22	1.74	0.53
1:B:326:ILE:HG22	1:B:438:PRO:HG2	1.90	0.53
1:C:219:ALA:HB2	1:C:225:ILE:HG13	1.89	0.53
2:A:505:NAG:H62	1:C:404:ASN:ND2	2.23	0.53
1:C:80:ASN:HB2	1:D:442:GLU:H	1.73	0.53
1:C:80:ASN:HD22	1:D:300:ASN:HB2	1.68	0.53
1:D:85:VAL:HG22	1:D:86:LEU:N	2.24	0.52
1:C:85:VAL:HG22	1:C:86:LEU:N	2.25	0.52
1:C:90:THR:HG22	1:C:240:ARG:HA	1.92	0.52
1:C:419:LYS:HD3	1:C:421:LYS:HG3	1.90	0.52
1:A:85:VAL:HG22	1:A:86:LEU:N	2.25	0.52
1:C:80:ASN:ND2	1:D:442:GLU:HB3	2.25	0.52
1:C:326:ILE:HG22	1:C:438:PRO:HG2	1.90	0.52
1:D:200:ALA:O	4:D:603:HOH:O	2.19	0.52

*Continued on next page...*

*Continued from previous page...*

Atom-1	Atom-2	Interatomic distance (Å)	Clash overlap (Å)
1:B:85:VAL:HG22	1:B:86:LEU:N	2.25	0.52
1:B:265:LEU:HD21	1:B:291:SER:HB3	1.93	0.51
1:C:80:ASN:HD22	1:D:442:GLU:HB2	1.75	0.51
1:A:207:LYS:HD2	1:A:439:ILE:HG23	1.93	0.51
1:B:207:LYS:HD2	1:B:439:ILE:HG23	1.93	0.51
1:A:90:THR:HG22	1:A:240:ARG:HA	1.92	0.51
1:C:61:TYR:O	1:D:57:ASP:HB3	2.11	0.51
1:D:90:THR:HG22	1:D:240:ARG:HA	1.91	0.50
1:D:205:CYS:HB2	4:D:626:HOH:O	2.10	0.50
1:C:80:ASN:ND2	1:D:442:GLU:CB	2.74	0.50
1:C:226:LEU:HD23	1:C:243:SER:O	2.11	0.50
1:C:339:ASN:ND2	2:C:508:NAG:H83	2.26	0.50
1:B:338:TRP:NE1	1:B:342:LEU:HD12	2.27	0.50
1:D:338:TRP:NE1	1:D:342:LEU:HD12	2.27	0.50
1:D:292:VAL:HG22	1:D:337:LYS:HD2	1.94	0.49
1:A:338:TRP:NE1	1:A:342:LEU:HD12	2.27	0.49
1:C:362:GLU:OE1	1:C:469:ARG:NH2	2.46	0.49
1:D:226:LEU:HD23	1:D:243:SER:O	2.11	0.49
1:D:362:GLU:OE1	1:D:469:ARG:NH2	2.46	0.49
1:B:292:VAL:HG22	1:B:337:LYS:HD2	1.94	0.49
1:D:207:LYS:HD2	1:D:439:ILE:HG23	1.93	0.49
1:A:362:GLU:OE1	1:A:469:ARG:NH2	2.46	0.49
1:B:362:GLU:OE1	1:B:469:ARG:NH2	2.46	0.49
1:C:292:VAL:HG22	1:C:337:LYS:HD2	1.94	0.49
1:C:338:TRP:NE1	1:C:342:LEU:HD12	2.27	0.49
1:C:61:TYR:CA	1:D:59:LYS:HE2	2.43	0.49
1:C:61:TYR:O	1:D:57:ASP:CB	2.62	0.48
1:C:85:VAL:HG22	1:C:86:LEU:H	1.79	0.48
1:B:59:LYS:HD3	1:B:61:TYR:CE1	2.49	0.48
1:D:59:LYS:HD3	1:D:61:TYR:CE1	2.49	0.47
1:A:85:VAL:HG22	1:A:86:LEU:H	1.79	0.47
1:B:85:VAL:HG22	1:B:86:LEU:H	1.79	0.47
1:C:60:ALA:HB3	1:D:59:LYS:CD	2.44	0.47
1:D:85:VAL:HG22	1:D:86:LEU:H	1.79	0.47
1:A:91:GLU:HB2	1:A:242:VAL:HG11	1.97	0.47
1:B:290:GLU:OE1	1:B:337:LYS:NZ	2.31	0.47
1:A:59:LYS:HD3	1:A:61:TYR:CE1	2.49	0.47
1:D:290:GLU:OE1	1:D:337:LYS:NZ	2.31	0.47
1:A:405:HIS:H	2:A:508:NAG:H81	1.79	0.47
1:B:91:GLU:HB2	1:B:242:VAL:HG11	1.97	0.47
1:D:91:GLU:HB2	1:D:242:VAL:HG11	1.97	0.46

*Continued on next page...*

*Continued from previous page...*

Atom-1	Atom-2	Interatomic distance (Å)	Clash overlap (Å)
1:C:59:LYS:HD3	1:C:61:TYR:CE1	2.49	0.46
1:D:298:ARG:NH2	1:D:441:GLY:O	2.43	0.46
1:C:61:TYR:O	1:D:57:ASP:CG	2.54	0.46
1:C:91:GLU:HB2	1:C:242:VAL:HG11	1.97	0.46
1:C:61:TYR:CB	1:D:57:ASP:O	2.64	0.46
1:C:335:GLU:HB3	2:C:508:NAG:H62	1.98	0.46
1:C:389:ASP:HB2	4:C:614:HOH:O	2.16	0.45
1:B:326:ILE:H	1:B:326:ILE:CD1	2.14	0.45
1:C:292:VAL:HG22	1:C:337:LYS:CD	2.47	0.45
1:B:337:LYS:HD3	1:B:341:THR:HG23	1.99	0.45
1:D:337:LYS:HD3	1:D:341:THR:HG23	1.99	0.45
1:A:297:THR:O	1:A:329:ALA:HB1	2.18	0.44
1:B:292:VAL:HG22	1:B:337:LYS:CD	2.47	0.44
1:A:295:VAL:O	1:A:331:CYS:HA	2.18	0.44
1:B:99:ASP:O	1:B:103:GLN:HG3	2.17	0.44
1:B:295:VAL:O	1:B:331:CYS:HA	2.18	0.44
1:C:61:TYR:HA	1:D:59:LYS:NZ	2.33	0.44
1:C:99:ASP:O	1:C:103:GLN:HG3	2.17	0.44
1:B:236:THR:HG22	2:B:501:NAG:H5	1.99	0.44
1:C:207:LYS:HD2	1:C:439:ILE:HG22	1.98	0.44
1:C:337:LYS:HD3	1:C:341:THR:HG23	1.99	0.44
1:D:295:VAL:O	1:D:331:CYS:HA	2.18	0.44
1:A:55:ALA:HA	1:A:75:VAL:O	2.18	0.44
1:A:89:VAL:O	1:A:90:THR:OG1	2.33	0.44
1:D:99:ASP:O	1:D:103:GLN:HG3	2.17	0.44
1:D:236:THR:HG22	2:D:501:NAG:H5	1.99	0.44
1:D:326:ILE:H	1:D:326:ILE:CD1	2.14	0.44
1:A:326:ILE:H	1:A:326:ILE:CD1	2.14	0.44
1:B:90:THR:HA	1:B:239:CYS:O	2.18	0.44
1:C:297:THR:O	1:C:329:ALA:HB1	2.18	0.44
1:A:99:ASP:O	1:A:103:GLN:HG3	2.17	0.43
1:A:327:ARG:HG3	1:A:420:ILE:O	2.18	0.43
1:B:297:THR:O	1:B:329:ALA:HB1	2.18	0.43
1:C:90:THR:HA	1:C:239:CYS:O	2.19	0.43
1:D:327:ARG:HG3	1:D:420:ILE:O	2.18	0.43
1:D:90:THR:HA	1:D:239:CYS:O	2.18	0.43
1:C:236:THR:HG22	2:C:501:NAG:H5	1.99	0.43
1:D:292:VAL:HG22	1:D:337:LYS:CD	2.47	0.43
1:B:327:ARG:HG3	1:B:420:ILE:O	2.18	0.43
1:C:327:ARG:HG3	1:C:420:ILE:O	2.19	0.43
1:C:55:ALA:HA	1:C:75:VAL:O	2.18	0.43

*Continued on next page...*



Continued from previous page...

Atom-1	Atom-2	Interatomic distance (Å)	Clash overlap (Å)
1:B:55:ALA:HA	1:B:75:VAL:O	2.18	0.43
1:D:297:THR:O	1:D:329:ALA:HB1	2.18	0.43
1:A:62:GLU:HG3	1:A:64:GLU:HB3	2.01	0.43
1:A:90:THR:HA	1:A:239:CYS:O	2.18	0.43
1:D:55:ALA:HA	1:D:75:VAL:O	2.18	0.43
1:C:295:VAL:O	1:C:331:CYS:HA	2.18	0.43
1:A:298:ARG:NH2	1:A:441:GLY:O	2.43	0.42
1:C:290:GLU:OE1	1:C:337:LYS:NZ	2.31	0.42
1:B:226:LEU:HD23	1:B:243:SER:O	2.20	0.42
1:C:298:ARG:NH2	1:C:441:GLY:O	2.43	0.42
1:D:89:VAL:O	1:D:90:THR:OG1	2.33	0.42
1:D:62:GLU:HG3	1:D:64:GLU:HB3	2.01	0.42
1:C:60:ALA:HB3	1:D:59:LYS:CE	2.49	0.42
1:A:226:LEU:HD23	1:A:243:SER:O	2.20	0.42
1:B:100:MET:HE1	1:B:483:LEU:HD22	2.01	0.42
1:C:381:GLU:OE2	1:C:439:ILE:HG23	2.19	0.41
1:D:269:GLU:H	1:D:269:GLU:HG2	1.65	0.41
1:C:326:ILE:H	1:C:326:ILE:CD1	2.14	0.41
1:B:62:GLU:HG3	1:B:64:GLU:HB3	2.01	0.41
1:A:342:LEU:HD22	1:A:361:PHE:CE2	2.56	0.41
1:B:342:LEU:HD22	1:B:361:PHE:CE2	2.56	0.41
1:C:342:LEU:HD22	1:C:361:PHE:CE2	2.56	0.41
1:C:62:GLU:HG3	1:C:64:GLU:HB3	2.01	0.41
1:D:100:MET:HE2	1:D:483:LEU:HD22	2.02	0.41
1:B:298:ARG:NH2	1:B:441:GLY:O	2.43	0.40
1:C:100:MET:HE2	1:C:483:LEU:HD22	2.02	0.40
1:B:54:CYS:HA	1:B:216:HIS:O	2.22	0.40
1:B:373:THR:HB	1:B:385:CYS:O	2.21	0.40
1:C:339:ASN:OD1	1:C:405:HIS:HB2	2.22	0.40
1:C:373:THR:HB	1:C:385:CYS:O	2.22	0.40
1:B:120:VAL:HG22	1:B:202:THR:HG23	2.03	0.40
1:D:373:THR:HB	1:D:385:CYS:O	2.21	0.40

All (2) symmetry-related close contacts are listed below. The label for Atom-2 includes the symmetry operator and encoded unit-cell translations to be applied.

Atom-1	Atom-2	Interatomic distance (Å)	Clash overlap (Å)
1:B:356:SER:OG	1:D:356:SER:OG[3_444]	1.97	0.23
1:A:94:ASN:ND2	2:D:506:NAG:O3[3_444]	2.11	0.09

## 5.3 Torsion angles [i](#)

### 5.3.1 Protein backbone [i](#)

In the following table, the Percentiles column shows the percent Ramachandran outliers of the chain as a percentile score with respect to all X-ray entries followed by that with respect to entries of similar resolution.

The Analysed column shows the number of residues for which the backbone conformation was analysed, and the total number of residues.

Mol	Chain	Analysed	Favoured	Allowed	Outliers	Percentiles	
1	A	329/358 (92%)	311 (94%)	14 (4%)	4 (1%)	13	11
1	B	329/358 (92%)	311 (94%)	14 (4%)	4 (1%)	13	11
1	C	329/358 (92%)	311 (94%)	14 (4%)	4 (1%)	13	11
1	D	329/358 (92%)	311 (94%)	14 (4%)	4 (1%)	13	11
All	All	1316/1432 (92%)	1244 (94%)	56 (4%)	16 (1%)	13	11

All (16) Ramachandran outliers are listed below:

Mol	Chain	Res	Type
1	A	439	ILE
1	B	439	ILE
1	C	439	ILE
1	D	439	ILE
1	A	90	THR
1	B	90	THR
1	C	90	THR
1	D	90	THR
1	A	365	SER
1	B	365	SER
1	C	365	SER
1	D	365	SER
1	A	354	PRO
1	B	354	PRO
1	C	354	PRO
1	D	354	PRO

### 5.3.2 Protein sidechains [i](#)

In the following table, the Percentiles column shows the percent sidechain outliers of the chain as a percentile score with respect to all X-ray entries followed by that with respect to entries of similar resolution.

The Analysed column shows the number of residues for which the sidechain conformation was analysed, and the total number of residues.

Mol	Chain	Analysed	Rotameric	Outliers	Percentiles	
1	A	297/312 (95%)	280 (94%)	17 (6%)	20	24
1	B	297/312 (95%)	278 (94%)	19 (6%)	17	19
1	C	297/312 (95%)	279 (94%)	18 (6%)	18	21
1	D	297/312 (95%)	281 (95%)	16 (5%)	22	26
All	All	1188/1248 (95%)	1118 (94%)	70 (6%)	19	22

All (70) residues with a non-rotameric sidechain are listed below:

Mol	Chain	Res	Type
1	A	57	ASP
1	A	91	GLU
1	A	113	ASP
1	A	123	THR
1	A	199	SER
1	A	209	SER
1	A	226	LEU
1	A	246	GLN
1	A	265	LEU
1	A	298	ARG
1	A	337	LYS
1	A	379	ARG
1	A	389	ASP
1	A	410	SER
1	A	417	GLN
1	A	442	GLU
1	A	469	ARG
1	B	51	THR
1	B	57	ASP
1	B	63	LYS
1	B	90	THR
1	B	91	GLU
1	B	113	ASP
1	B	199	SER
1	B	202	THR
1	B	209	SER
1	B	226	LEU
1	B	236	THR
1	B	246	GLN
1	B	298	ARG

*Continued on next page...*

*Continued from previous page...*

Mol	Chain	Res	Type
1	B	379	ARG
1	B	389	ASP
1	B	399	THR
1	B	410	SER
1	B	417	GLN
1	B	469	ARG
1	C	57	ASP
1	C	63	LYS
1	C	91	GLU
1	C	113	ASP
1	C	123	THR
1	C	199	SER
1	C	209	SER
1	C	236	THR
1	C	246	GLN
1	C	265	LEU
1	C	298	ARG
1	C	357	LYS
1	C	379	ARG
1	C	389	ASP
1	C	410	SER
1	C	417	GLN
1	C	439	ILE
1	C	469	ARG
1	D	57	ASP
1	D	91	GLU
1	D	113	ASP
1	D	199	SER
1	D	202	THR
1	D	209	SER
1	D	236	THR
1	D	246	GLN
1	D	265	LEU
1	D	298	ARG
1	D	357	LYS
1	D	379	ARG
1	D	389	ASP
1	D	410	SER
1	D	417	GLN
1	D	469	ARG

Sometimes sidechains can be flipped to improve hydrogen bonding and reduce clashes. All (4) such sidechains are listed below:

Mol	Chain	Res	Type
1	A	404	ASN
1	B	422	GLN
1	C	80	ASN
1	C	404	ASN

### 5.3.3 RNA [i](#)

There are no RNA molecules in this entry.

## 5.4 Non-standard residues in protein, DNA, RNA chains [i](#)

There are no non-standard protein/DNA/RNA residues in this entry.

## 5.5 Carbohydrates [i](#)

There are no monosaccharides in this entry.

## 5.6 Ligand geometry [i](#)

30 ligands are modelled in this entry.

In the following table, the Counts columns list the number of bonds (or angles) for which Mogul statistics could be retrieved, the number of bonds (or angles) that are observed in the model and the number of bonds (or angles) that are defined in the Chemical Component Dictionary. The Link column lists molecule types, if any, to which the group is linked. The Z score for a bond length (or angle) is the number of standard deviations the observed value is removed from the expected value. A bond length (or angle) with  $|Z| > 2$  is considered an outlier worth inspection. RMSZ is the root-mean-square of all Z scores of the bond lengths (or angles).

Mol	Type	Chain	Res	Link	Bond lengths			Bond angles		
					Counts	RMSZ	$\# Z  > 2$	Counts	RMSZ	$\# Z  > 2$
3	Y2O	D	507	-	43,44,44	3.49	18 (41%)	55,61,61	2.50	15 (27%)
2	NAG	A	505	1	14,14,15	1.12	1 (7%)	17,19,21	0.67	1 (5%)
3	Y2O	B	507	-	43,44,44	3.49	18 (41%)	55,61,61	2.50	15 (27%)
2	NAG	D	505	1	14,14,15	1.12	1 (7%)	17,19,21	0.67	1 (5%)
2	NAG	D	501	1	14,14,15	0.33	0	17,19,21	0.37	0
2	NAG	C	505	1	14,14,15	1.12	1 (7%)	17,19,21	0.67	1 (5%)
2	NAG	D	503	1	14,14,15	1.27	2 (14%)	17,19,21	1.12	1 (5%)
2	NAG	A	508	1	14,14,15	0.74	1 (7%)	17,19,21	1.02	1 (5%)
2	NAG	B	506	1	14,14,15	1.06	1 (7%)	17,19,21	2.45	3 (17%)

Mol	Type	Chain	Res	Link	Bond lengths			Bond angles		
					Counts	RMSZ	# Z  > 2	Counts	RMSZ	# Z  > 2
2	NAG	C	508	1	14,14,15	1.22	1 (7%)	17,19,21	1.08	1 (5%)
2	NAG	D	504	1	14,14,15	1.41	1 (7%)	17,19,21	0.64	0
2	NAG	B	501	1	14,14,15	0.32	0	17,19,21	0.37	0
3	Y2O	A	507	-	43,44,44	3.49	18 (41%)	55,61,61	2.50	15 (27%)
2	NAG	A	506	1	14,14,15	1.06	1 (7%)	17,19,21	2.45	3 (17%)
2	NAG	B	502	1	14,14,15	0.41	0	17,19,21	1.00	1 (5%)
2	NAG	C	503	1	14,14,15	1.26	2 (14%)	17,19,21	1.12	1 (5%)
2	NAG	A	501	1	14,14,15	0.32	0	17,19,21	0.37	0
2	NAG	B	505	1	14,14,15	1.12	1 (7%)	17,19,21	0.67	1 (5%)
2	NAG	C	506	1	14,14,15	1.06	1 (7%)	17,19,21	2.45	3 (17%)
2	NAG	C	504	1	14,14,15	1.41	1 (7%)	17,19,21	0.64	0
2	NAG	B	504	1	14,14,15	1.41	1 (7%)	17,19,21	0.64	0
2	NAG	A	502	1	14,14,15	0.41	0	17,19,21	0.99	1 (5%)
2	NAG	D	502	1	14,14,15	0.41	0	17,19,21	0.99	1 (5%)
2	NAG	B	503	1	14,14,15	1.26	2 (14%)	17,19,21	1.12	1 (5%)
2	NAG	C	502	1	14,14,15	0.41	0	17,19,21	0.99	1 (5%)
2	NAG	C	501	1	14,14,15	0.32	0	17,19,21	0.37	0
2	NAG	A	503	1	14,14,15	1.26	2 (14%)	17,19,21	1.12	1 (5%)
3	Y2O	C	507	-	43,44,44	3.49	18 (41%)	55,61,61	2.50	15 (27%)
2	NAG	D	506	1	14,14,15	1.06	1 (7%)	17,19,21	2.45	3 (17%)
2	NAG	A	504	1	14,14,15	1.41	1 (7%)	17,19,21	0.64	0

In the following table, the Chirals column lists the number of chiral outliers, the number of chiral centers analysed, the number of these observed in the model and the number defined in the Chemical Component Dictionary. Similar counts are reported in the Torsion and Rings columns. '-' means no outliers of that kind were identified.

Mol	Type	Chain	Res	Link	Chirals	Torsions	Rings
3	Y2O	D	507	-	-	1/28/45/45	0/4/4/4
2	NAG	A	505	1	-	2/6/23/26	0/1/1/1
3	Y2O	B	507	-	-	1/28/45/45	0/4/4/4
2	NAG	D	505	1	-	2/6/23/26	0/1/1/1
2	NAG	D	501	1	-	0/6/23/26	0/1/1/1
2	NAG	C	505	1	-	2/6/23/26	0/1/1/1
2	NAG	D	503	1	-	2/6/23/26	0/1/1/1
2	NAG	A	508	1	-	4/6/23/26	0/1/1/1
2	NAG	B	506	1	-	2/6/23/26	0/1/1/1

Continued on next page...

Continued from previous page...

Mol	Type	Chain	Res	Link	Chirals	Torsions	Rings
2	NAG	C	508	1	-	4/6/23/26	0/1/1/1
2	NAG	D	504	1	-	2/6/23/26	0/1/1/1
2	NAG	B	501	1	-	0/6/23/26	0/1/1/1
3	Y2O	A	507	-	-	1/28/45/45	0/4/4/4
2	NAG	A	506	1	-	2/6/23/26	0/1/1/1
2	NAG	B	502	1	-	0/6/23/26	0/1/1/1
2	NAG	C	503	1	-	2/6/23/26	0/1/1/1
2	NAG	A	501	1	-	0/6/23/26	0/1/1/1
2	NAG	B	505	1	-	2/6/23/26	0/1/1/1
2	NAG	C	506	1	-	2/6/23/26	0/1/1/1
2	NAG	C	504	1	-	2/6/23/26	0/1/1/1
2	NAG	B	504	1	-	2/6/23/26	0/1/1/1
2	NAG	A	502	1	-	0/6/23/26	0/1/1/1
2	NAG	D	502	1	-	0/6/23/26	0/1/1/1
2	NAG	B	503	1	-	2/6/23/26	0/1/1/1
2	NAG	C	502	1	-	0/6/23/26	0/1/1/1
2	NAG	C	501	1	-	0/6/23/26	0/1/1/1
2	NAG	A	503	1	-	2/6/23/26	0/1/1/1
3	Y2O	C	507	-	-	1/28/45/45	0/4/4/4
2	NAG	D	506	1	-	2/6/23/26	0/1/1/1
2	NAG	A	504	1	-	2/6/23/26	0/1/1/1

All (94) bond length outliers are listed below:

Mol	Chain	Res	Type	Atoms	Z	Observed(Å)	Ideal(Å)
3	C	507	Y2O	C34-C18	10.75	1.62	1.51
3	B	507	Y2O	C34-C18	10.75	1.62	1.51
3	A	507	Y2O	C34-C18	10.75	1.62	1.51
3	D	507	Y2O	C34-C18	10.74	1.62	1.51
3	A	507	Y2O	C02-N11	7.83	1.48	1.37
3	B	507	Y2O	C02-N11	7.83	1.48	1.37
3	C	507	Y2O	C02-N11	7.82	1.48	1.37
3	D	507	Y2O	C02-N11	7.82	1.48	1.37
3	B	507	Y2O	C20-N19	7.37	1.48	1.34
3	C	507	Y2O	C20-N19	7.37	1.48	1.34
3	A	507	Y2O	C20-N19	7.37	1.48	1.34
3	D	507	Y2O	C20-N19	7.37	1.48	1.34
3	B	507	Y2O	C15-N14	7.28	1.47	1.33
3	D	507	Y2O	C15-N14	7.28	1.47	1.33
3	C	507	Y2O	C15-N14	7.28	1.47	1.33

Continued on next page...

*Continued from previous page...*

Mol	Chain	Res	Type	Atoms	Z	Observed(Å)	Ideal(Å)
3	A	507	Y2O	C15-N14	7.27	1.47	1.33
3	C	507	Y2O	C18-C12	-6.91	1.47	1.55
3	B	507	Y2O	C18-C12	-6.90	1.47	1.55
3	A	507	Y2O	C18-C12	-6.90	1.47	1.55
3	D	507	Y2O	C18-C12	-6.90	1.47	1.55
3	B	507	Y2O	C21-N22	6.36	1.49	1.35
3	C	507	Y2O	C21-N22	6.36	1.49	1.35
3	D	507	Y2O	C21-N22	6.36	1.49	1.35
3	A	507	Y2O	C21-N22	6.35	1.49	1.35
2	A	504	NAG	O5-C1	4.90	1.51	1.43
2	C	504	NAG	O5-C1	4.90	1.51	1.43
2	B	504	NAG	O5-C1	4.90	1.51	1.43
2	D	504	NAG	O5-C1	4.89	1.51	1.43
3	C	507	Y2O	O03-C02	4.52	1.43	1.34
3	D	507	Y2O	O03-C02	4.52	1.43	1.34
3	A	507	Y2O	O03-C02	4.52	1.43	1.34
3	B	507	Y2O	O03-C02	4.52	1.43	1.34
2	C	508	NAG	O5-C1	4.21	1.50	1.43
2	D	505	NAG	O5-C1	3.95	1.50	1.43
2	C	505	NAG	O5-C1	3.95	1.50	1.43
2	B	505	NAG	O5-C1	3.95	1.50	1.43
2	A	505	NAG	O5-C1	3.95	1.50	1.43
3	B	507	Y2O	C38-C37	3.64	1.59	1.51
3	C	507	Y2O	C38-C37	3.64	1.59	1.51
3	A	507	Y2O	C38-C37	3.64	1.59	1.51
3	D	507	Y2O	C38-C37	3.64	1.59	1.51
2	B	503	NAG	O5-C1	3.64	1.49	1.43
2	C	503	NAG	O5-C1	3.64	1.49	1.43
2	D	503	NAG	O5-C1	3.64	1.49	1.43
2	A	503	NAG	O5-C1	3.63	1.49	1.43
3	B	507	Y2O	C15-N16	3.49	1.46	1.32
3	A	507	Y2O	C15-N16	3.49	1.46	1.32
3	D	507	Y2O	C15-N16	3.49	1.46	1.32
3	C	507	Y2O	C15-N16	3.48	1.46	1.32
2	D	506	NAG	O5-C1	3.47	1.49	1.43
2	C	506	NAG	O5-C1	3.47	1.49	1.43
2	A	506	NAG	O5-C1	3.47	1.49	1.43
2	B	506	NAG	O5-C1	3.47	1.49	1.43
3	D	507	Y2O	C41-C33	3.44	1.45	1.39
3	A	507	Y2O	C41-C33	3.44	1.45	1.39
3	B	507	Y2O	C41-C33	3.44	1.45	1.39
3	C	507	Y2O	C41-C33	3.44	1.45	1.39

*Continued on next page...*



Continued from previous page...

Mol	Chain	Res	Type	Atoms	Z	Observed(Å)	Ideal(Å)
3	B	507	Y2O	C12-N11	-3.36	1.44	1.48
3	D	507	Y2O	C12-N11	-3.36	1.44	1.48
3	A	507	Y2O	C12-N11	-3.36	1.44	1.48
3	C	507	Y2O	C12-N11	-3.36	1.44	1.48
3	C	507	Y2O	C18-N19	-3.33	1.40	1.46
3	B	507	Y2O	C18-N19	-3.32	1.40	1.46
3	D	507	Y2O	C18-N19	-3.32	1.40	1.46
3	A	507	Y2O	C18-N19	-3.32	1.40	1.46
3	A	507	Y2O	O32-C20	-3.24	1.17	1.23
3	C	507	Y2O	O32-C20	-3.24	1.17	1.23
3	B	507	Y2O	O32-C20	-3.24	1.17	1.23
3	D	507	Y2O	O32-C20	-3.24	1.17	1.23
2	D	503	NAG	C1-C2	2.79	1.56	1.52
2	C	503	NAG	C1-C2	2.78	1.56	1.52
2	A	503	NAG	C1-C2	2.78	1.56	1.52
2	B	503	NAG	C1-C2	2.78	1.56	1.52
3	C	507	Y2O	C23-N22	2.73	1.47	1.41
3	A	507	Y2O	C23-N22	2.73	1.47	1.41
3	D	507	Y2O	C23-N22	2.73	1.47	1.41
3	B	507	Y2O	C23-N22	2.72	1.47	1.41
3	A	507	Y2O	C04-C05	2.64	1.56	1.50
3	C	507	Y2O	C04-C05	2.64	1.56	1.50
3	B	507	Y2O	C04-C05	2.64	1.56	1.50
3	D	507	Y2O	C04-C05	2.64	1.56	1.50
3	B	507	Y2O	C27-CL28	2.60	1.79	1.73
3	A	507	Y2O	C27-CL28	2.60	1.79	1.73
3	C	507	Y2O	C27-CL28	2.60	1.79	1.73
3	D	507	Y2O	C27-CL28	2.60	1.79	1.73
3	C	507	Y2O	C36-C35	2.54	1.43	1.38
3	D	507	Y2O	C36-C35	2.54	1.43	1.38
3	A	507	Y2O	C36-C35	2.54	1.43	1.38
3	B	507	Y2O	C36-C35	2.54	1.43	1.38
3	C	507	Y2O	C41-C37	2.36	1.43	1.39
3	D	507	Y2O	C41-C37	2.36	1.43	1.39
3	A	507	Y2O	C41-C37	2.36	1.43	1.39
3	B	507	Y2O	C41-C37	2.35	1.43	1.39
2	A	508	NAG	O5-C1	2.25	1.47	1.43

All (86) bond angle outliers are listed below:

Mol	Chain	Res	Type	Atoms	Z	Observed(°)	Ideal(°)
3	B	507	Y2O	C12-C18-N19	-11.69	102.24	115.01

Continued on next page...

*Continued from previous page...*

Mol	Chain	Res	Type	Atoms	Z	Observed(°)	Ideal(°)
3	A	507	Y2O	C12-C18-N19	-11.69	102.24	115.01
3	C	507	Y2O	C12-C18-N19	-11.69	102.24	115.01
3	D	507	Y2O	C12-C18-N19	-11.69	102.24	115.01
2	A	506	NAG	C1-O5-C5	9.14	124.58	112.19
2	D	506	NAG	C1-O5-C5	9.14	124.58	112.19
2	C	506	NAG	C1-O5-C5	9.14	124.58	112.19
2	B	506	NAG	C1-O5-C5	9.14	124.58	112.19
3	C	507	Y2O	C34-C18-N19	-6.19	104.67	114.61
3	A	507	Y2O	C34-C18-N19	-6.19	104.67	114.61
3	B	507	Y2O	C34-C18-N19	-6.19	104.67	114.61
3	D	507	Y2O	C34-C18-N19	-6.19	104.68	114.61
3	A	507	Y2O	C34-C33-N11	-5.34	104.81	109.41
3	B	507	Y2O	C34-C33-N11	-5.34	104.81	109.41
3	D	507	Y2O	C34-C33-N11	-5.34	104.81	109.41
3	C	507	Y2O	C34-C33-N11	-5.33	104.81	109.41
3	B	507	Y2O	O03-C02-N11	4.80	118.27	111.07
3	C	507	Y2O	O03-C02-N11	4.80	118.27	111.07
3	A	507	Y2O	O03-C02-N11	4.80	118.27	111.07
3	D	507	Y2O	O03-C02-N11	4.80	118.27	111.07
3	A	507	Y2O	C23-N22-C21	-4.08	120.44	127.53
3	C	507	Y2O	C23-N22-C21	-4.08	120.44	127.53
3	B	507	Y2O	C23-N22-C21	-4.08	120.44	127.53
3	D	507	Y2O	C23-N22-C21	-4.08	120.44	127.53
3	A	507	Y2O	C41-C33-N11	3.61	134.69	128.50
3	B	507	Y2O	C41-C33-N11	3.61	134.68	128.50
3	C	507	Y2O	C41-C33-N11	3.61	134.68	128.50
3	D	507	Y2O	C41-C33-N11	3.61	134.68	128.50
2	A	508	NAG	C1-O5-C5	3.48	116.91	112.19
2	C	508	NAG	C1-O5-C5	3.36	116.75	112.19
3	C	507	Y2O	O03-C02-O01	-3.05	119.58	124.78
3	B	507	Y2O	O03-C02-O01	-3.05	119.58	124.78
3	D	507	Y2O	O03-C02-O01	-3.05	119.58	124.78
3	A	507	Y2O	O03-C02-O01	-3.05	119.58	124.78
2	D	506	NAG	C3-C4-C5	3.02	115.63	110.24
2	C	506	NAG	C3-C4-C5	3.02	115.63	110.24
2	A	506	NAG	C3-C4-C5	3.02	115.62	110.24
2	B	506	NAG	C3-C4-C5	3.02	115.62	110.24
2	B	502	NAG	C1-O5-C5	2.79	115.97	112.19
2	A	502	NAG	C1-O5-C5	2.79	115.97	112.19
2	C	502	NAG	C1-O5-C5	2.79	115.97	112.19
2	D	502	NAG	C1-O5-C5	2.79	115.97	112.19
3	B	507	Y2O	C38-C37-C36	-2.61	115.50	120.91

*Continued on next page...*

*Continued from previous page...*

Mol	Chain	Res	Type	Atoms	Z	Observed(°)	Ideal(°)
3	C	507	Y2O	C38-C37-C36	-2.61	115.50	120.91
3	A	507	Y2O	C38-C37-C36	-2.61	115.50	120.91
3	D	507	Y2O	C38-C37-C36	-2.61	115.51	120.91
3	A	507	Y2O	C21-C20-N19	2.50	119.73	113.73
3	C	507	Y2O	C21-C20-N19	2.50	119.73	113.73
3	B	507	Y2O	C21-C20-N19	2.50	119.73	113.73
3	D	507	Y2O	C21-C20-N19	2.50	119.72	113.73
3	B	507	Y2O	C23-C24-C25	-2.50	116.71	118.76
3	A	507	Y2O	C23-C24-C25	-2.49	116.72	118.76
3	C	507	Y2O	C23-C24-C25	-2.49	116.72	118.76
3	D	507	Y2O	C23-C24-C25	-2.49	116.72	118.76
3	A	507	Y2O	C34-C18-C12	2.41	105.59	102.76
3	C	507	Y2O	C34-C18-C12	2.41	105.59	102.76
3	D	507	Y2O	C34-C18-C12	2.41	105.59	102.76
3	B	507	Y2O	C34-C18-C12	2.40	105.59	102.76
3	A	507	Y2O	C38-C37-C41	2.33	125.68	120.64
3	B	507	Y2O	C38-C37-C41	2.33	125.67	120.64
3	D	507	Y2O	C38-C37-C41	2.33	125.67	120.64
3	C	507	Y2O	C38-C37-C41	2.33	125.67	120.64
3	B	507	Y2O	C24-C25-C27	2.29	123.92	121.72
3	A	507	Y2O	C24-C25-C27	2.28	123.92	121.72
3	C	507	Y2O	C24-C25-C27	2.28	123.92	121.72
3	D	507	Y2O	C24-C25-C27	2.28	123.92	121.72
3	C	507	Y2O	O32-C20-C21	-2.21	118.60	121.30
3	A	507	Y2O	O32-C20-C21	-2.21	118.60	121.30
3	D	507	Y2O	O32-C20-C21	-2.21	118.60	121.30
3	B	507	Y2O	O32-C20-C21	-2.21	118.61	121.30
3	D	507	Y2O	C29-C27-CL28	2.18	122.79	118.41
3	A	507	Y2O	C29-C27-CL28	2.18	122.79	118.41
3	B	507	Y2O	C29-C27-CL28	2.18	122.78	118.41
3	C	507	Y2O	C29-C27-CL28	2.18	122.78	118.41
2	D	503	NAG	O5-C5-C6	2.14	110.56	107.20
2	A	503	NAG	O5-C5-C6	2.14	110.56	107.20
2	B	503	NAG	O5-C5-C6	2.14	110.56	107.20
2	C	503	NAG	O5-C5-C6	2.14	110.56	107.20
2	A	505	NAG	C1-O5-C5	2.11	115.05	112.19
2	B	505	NAG	C1-O5-C5	2.11	115.05	112.19
2	C	505	NAG	C1-O5-C5	2.11	115.05	112.19
2	D	505	NAG	C1-O5-C5	2.11	115.05	112.19
2	B	506	NAG	O5-C5-C4	2.03	115.76	110.83
2	C	506	NAG	O5-C5-C4	2.03	115.76	110.83
2	A	506	NAG	O5-C5-C4	2.03	115.75	110.83

*Continued on next page...*

*Continued from previous page...*

Mol	Chain	Res	Type	Atoms	Z	Observed(°)	Ideal(°)
2	D	506	NAG	O5-C5-C4	2.03	115.75	110.83

There are no chirality outliers.

All (44) torsion outliers are listed below:

Mol	Chain	Res	Type	Atoms
2	A	505	NAG	O5-C5-C6-O6
2	B	505	NAG	O5-C5-C6-O6
2	C	505	NAG	O5-C5-C6-O6
2	D	505	NAG	O5-C5-C6-O6
2	A	504	NAG	O5-C5-C6-O6
2	B	504	NAG	O5-C5-C6-O6
2	C	504	NAG	O5-C5-C6-O6
2	D	504	NAG	O5-C5-C6-O6
2	A	506	NAG	C4-C5-C6-O6
2	B	506	NAG	C4-C5-C6-O6
2	C	506	NAG	C4-C5-C6-O6
2	D	506	NAG	C4-C5-C6-O6
2	A	504	NAG	C4-C5-C6-O6
2	A	505	NAG	C4-C5-C6-O6
2	B	504	NAG	C4-C5-C6-O6
2	B	505	NAG	C4-C5-C6-O6
2	C	504	NAG	C4-C5-C6-O6
2	C	505	NAG	C4-C5-C6-O6
2	D	504	NAG	C4-C5-C6-O6
2	D	505	NAG	C4-C5-C6-O6
2	A	508	NAG	C8-C7-N2-C2
2	A	508	NAG	O7-C7-N2-C2
2	C	508	NAG	C8-C7-N2-C2
2	C	508	NAG	O7-C7-N2-C2
2	C	508	NAG	C4-C5-C6-O6
2	A	503	NAG	O5-C5-C6-O6
2	B	503	NAG	O5-C5-C6-O6
2	C	503	NAG	O5-C5-C6-O6
2	D	503	NAG	O5-C5-C6-O6
2	B	503	NAG	C4-C5-C6-O6
2	A	503	NAG	C4-C5-C6-O6
2	C	503	NAG	C4-C5-C6-O6
2	D	503	NAG	C4-C5-C6-O6
2	C	508	NAG	O5-C5-C6-O6
2	A	506	NAG	O5-C5-C6-O6
2	B	506	NAG	O5-C5-C6-O6

*Continued on next page...*

*Continued from previous page...*

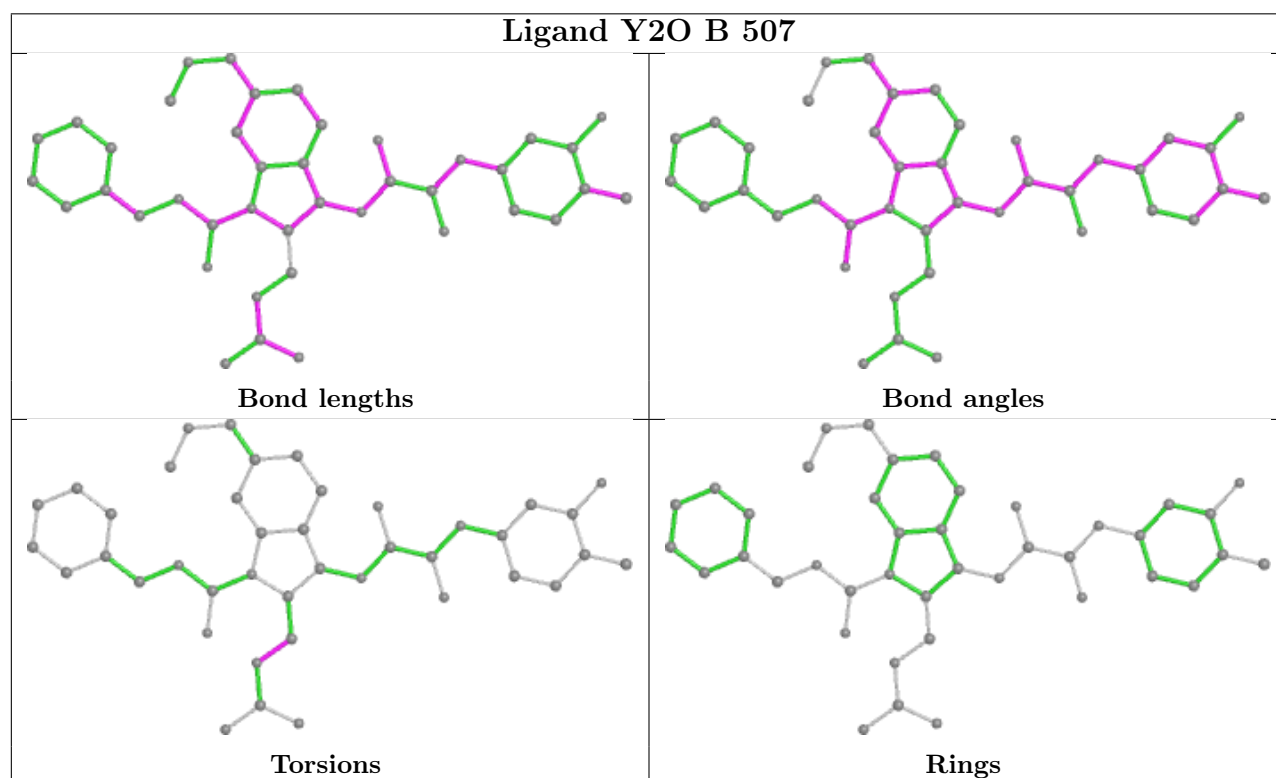
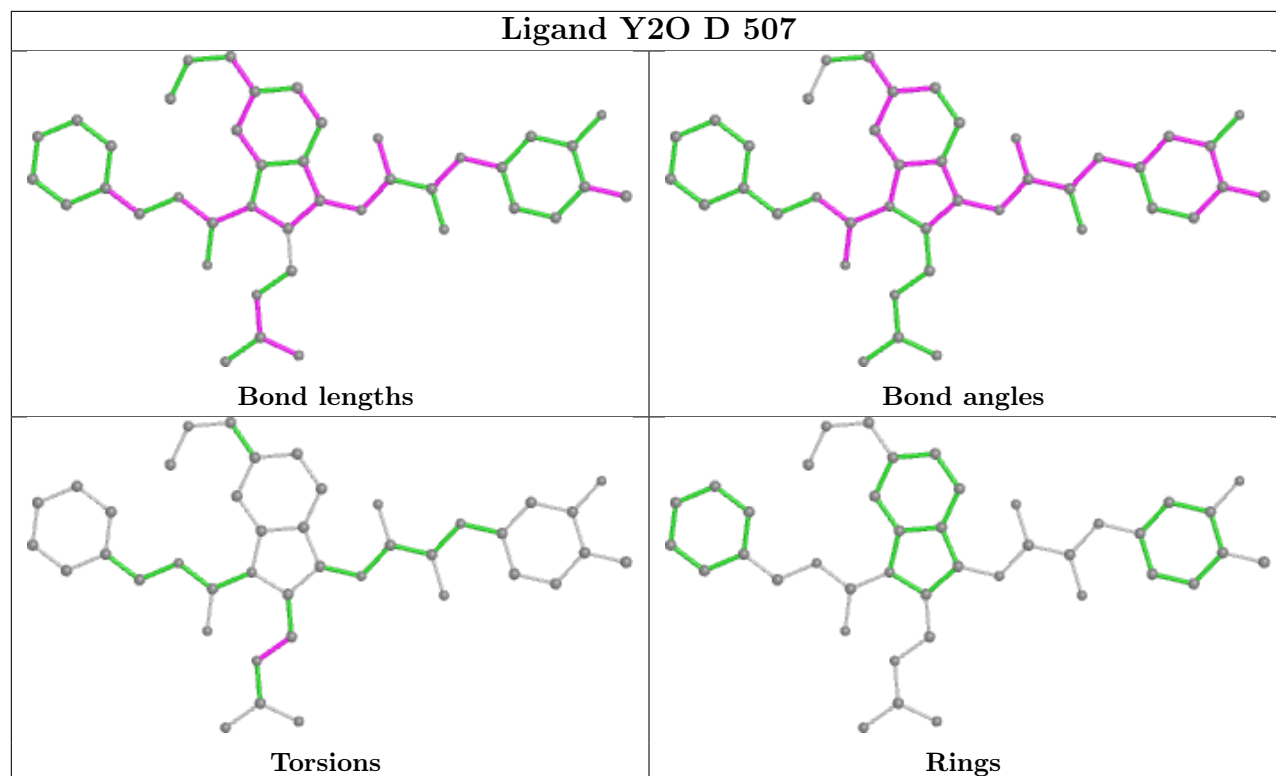
Mol	Chain	Res	Type	Atoms
2	C	506	NAG	O5-C5-C6-O6
2	D	506	NAG	O5-C5-C6-O6
2	A	508	NAG	C4-C5-C6-O6
2	A	508	NAG	O5-C5-C6-O6
3	A	507	Y2O	C12-C13-N14-C15
3	B	507	Y2O	C12-C13-N14-C15
3	C	507	Y2O	C12-C13-N14-C15
3	D	507	Y2O	C12-C13-N14-C15

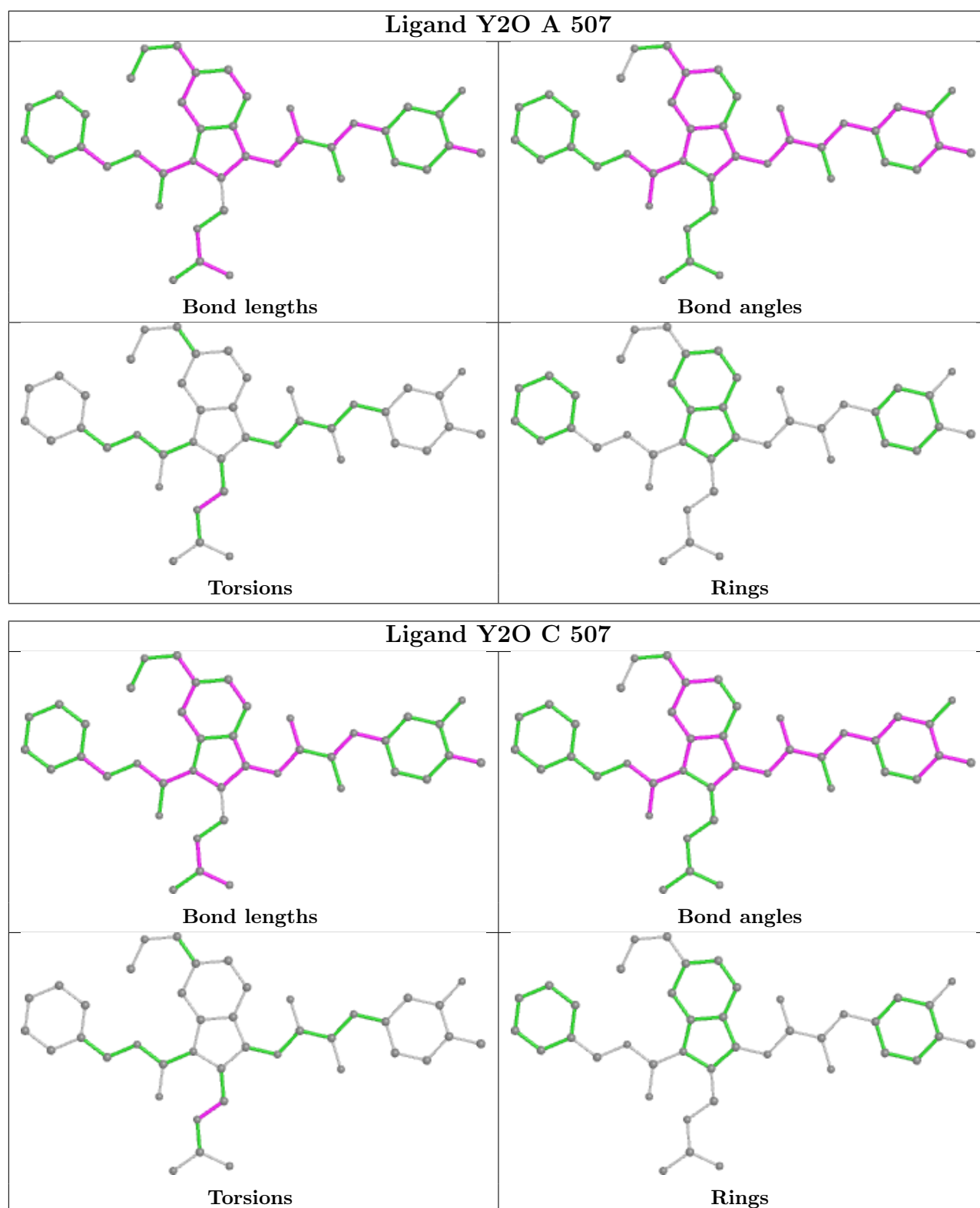
There are no ring outliers.

8 monomers are involved in 10 short contacts:

Mol	Chain	Res	Type	Clashes	Symm-Clashes
2	A	505	NAG	2	0
2	D	501	NAG	1	0
2	C	505	NAG	1	0
2	A	508	NAG	1	0
2	C	508	NAG	2	0
2	B	501	NAG	1	0
2	C	501	NAG	1	0
2	D	506	NAG	0	1

The following is a two-dimensional graphical depiction of Mogul quality analysis of bond lengths, bond angles, torsion angles, and ring geometry for all instances of the Ligand of Interest. In addition, ligands with molecular weight > 250 and outliers as shown on the validation Tables will also be included. For torsion angles, if less than 5% of the Mogul distribution of torsion angles is within 10 degrees of the torsion angle in question, then that torsion angle is considered an outlier. Any bond that is central to one or more torsion angles identified as an outlier by Mogul will be highlighted in the graph. For rings, the root-mean-square deviation (RMSD) between the ring in question and similar rings identified by Mogul is calculated over all ring torsion angles. If the average RMSD is greater than 60 degrees and the minimal RMSD between the ring in question and any Mogul-identified rings is also greater than 60 degrees, then that ring is considered an outlier. The outliers are highlighted in purple. The color gray indicates Mogul did not find sufficient equivalents in the CSD to analyse the geometry.





## 5.7 Other polymers [\(i\)](#)

There are no such residues in this entry.

## 5.8 Polymer linkage issues

There are no chain breaks in this entry.



## 6 Fit of model and data

### 6.1 Protein, DNA and RNA chains

In the following table, the column labelled ‘#RSRZ > 2’ contains the number (and percentage) of RSRZ outliers, followed by percent RSRZ outliers for the chain as percentile scores relative to all X-ray entries and entries of similar resolution. The OWAB column contains the minimum, median, 95<sup>th</sup> percentile and maximum values of the occupancy-weighted average B-factor per residue. The column labelled ‘Q < 0.9’ lists the number of (and percentage) of residues with an average occupancy less than 0.9.

Mol	Chain	Analysed	<RSRZ>	#RSRZ>2	OWAB(Å <sup>2</sup> )	Q<0.9
1	A	335/358 (93%)	0.20	20 (5%) 21 30	20, 37, 66, 90	0
1	B	335/358 (93%)	0.41	30 (8%) 9 15	21, 43, 85, 121	0
1	C	335/358 (93%)	0.31	19 (5%) 23 33	18, 33, 67, 122	0
1	D	335/358 (93%)	0.42	24 (7%) 15 22	22, 40, 73, 102	0
All	All	1340/1432 (93%)	0.33	93 (6%) 16 24	18, 38, 72, 122	0

All (93) RSRZ outliers are listed below:

Mol	Chain	Res	Type	RSRZ
1	C	60	ALA	15.5
1	C	61	TYR	6.8
1	C	88	ASN	6.2
1	D	57	ASP	6.1
1	D	87	ALA	5.9
1	B	240	ARG	5.8
1	B	89	VAL	5.8
1	C	198	GLY	5.7
1	C	240	ARG	5.1
1	B	60	ALA	5.0
1	D	240	ARG	5.0
1	A	85	VAL	5.0
1	C	84	MET	4.9
1	D	89	VAL	4.9
1	B	88	ASN	4.8
1	A	87	ALA	4.8
1	A	86	LEU	4.8
1	A	88	ASN	4.5
1	C	199	SER	4.5
1	B	91	GLU	4.4
1	D	85	VAL	4.4

*Continued on next page...*

*Continued from previous page...*

<b>Mol</b>	<b>Chain</b>	<b>Res</b>	<b>Type</b>	<b>RSRZ</b>
1	D	326	ILE	4.4
1	B	87	ALA	4.2
1	B	57	ASP	4.2
1	C	86	LEU	4.2
1	B	72	HIS	4.1
1	C	89	VAL	4.1
1	C	85	VAL	3.8
1	A	198	GLY	3.6
1	C	87	ALA	3.5
1	B	408	ARG	3.4
1	D	88	ASN	3.3
1	C	221	ALA	3.3
1	C	80	ASN	3.2
1	A	202	THR	3.2
1	B	79	PRO	3.2
1	A	89	VAL	3.2
1	B	226	LEU	3.1
1	D	86	LEU	3.1
1	D	408	ARG	3.1
1	B	85	VAL	3.0
1	C	124	GLY	3.0
1	A	221	ALA	3.0
1	D	300	ASN	2.9
1	B	90	THR	2.9
1	B	61	TYR	2.9
1	D	325	ASN	2.8
1	B	231	LYS	2.8
1	D	84	MET	2.7
1	D	122	LEU	2.7
1	A	49	LYS	2.7
1	B	224	ALA	2.7
1	D	231	LYS	2.7
1	D	60	ALA	2.7
1	A	82	GLN	2.6
1	B	244	THR	2.6
1	D	82	GLN	2.6
1	A	124	GLY	2.6
1	B	122	LEU	2.5
1	D	124	GLY	2.5
1	A	240	ARG	2.5
1	D	50	THR	2.5
1	B	50	THR	2.5

*Continued on next page...*

*Continued from previous page...*

Mol	Chain	Res	Type	RSRZ
1	B	325	ASN	2.5
1	A	242	VAL	2.4
1	B	84	MET	2.4
1	B	80	ASN	2.4
1	D	198	GLY	2.4
1	C	123	THR	2.4
1	C	226	LEU	2.3
1	B	411	ASN	2.3
1	A	84	MET	2.3
1	D	238	PRO	2.3
1	A	226	LEU	2.3
1	B	86	LEU	2.3
1	D	268	GLU	2.3
1	B	489	VAL	2.3
1	C	396	ARG	2.2
1	D	465	THR	2.2
1	C	82	GLN	2.2
1	D	267	GLU	2.2
1	B	93	PHE	2.2
1	A	489	VAL	2.1
1	A	224	ALA	2.1
1	A	356	SER	2.1
1	C	79	PRO	2.1
1	A	90	THR	2.1
1	B	241	ASN	2.1
1	B	340	ASN	2.1
1	B	238	PRO	2.1
1	A	72	HIS	2.0
1	D	61	TYR	2.0
1	B	379	ARG	2.0

## 6.2 Non-standard residues in protein, DNA, RNA chains [i](#)

There are no non-standard protein/DNA/RNA residues in this entry.

## 6.3 Carbohydrates [i](#)

There are no monosaccharides in this entry.

## 6.4 Ligands

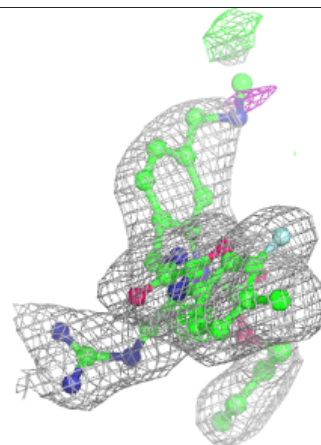
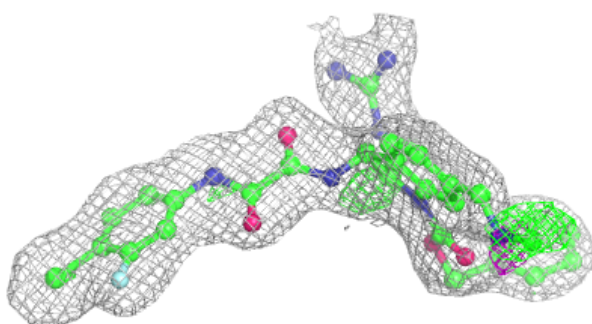
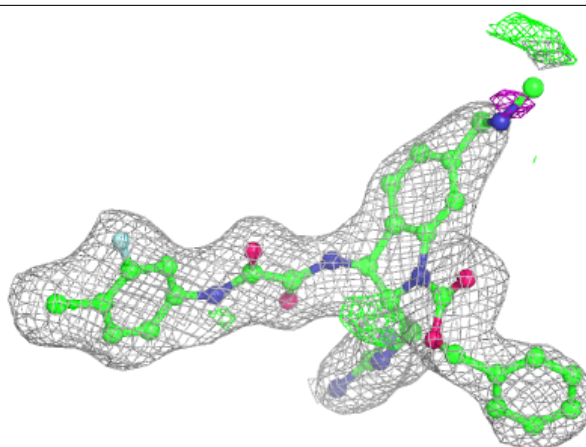
In the following table, the Atoms column lists the number of modelled atoms in the group and the number defined in the chemical component dictionary. The B-factors column lists the minimum, median, 95<sup>th</sup> percentile and maximum values of B factors of atoms in the group. The column labelled 'Q< 0.9' lists the number of atoms with occupancy less than 0.9.

Mol	Type	Chain	Res	Atoms	RSCC	RSR	B-factors(Å <sup>2</sup> )	Q<0.9
2	NAG	D	506	14/15	0.60	0.32	58,66,75,78	0
2	NAG	A	506	14/15	0.64	0.28	79,94,103,103	0
2	NAG	B	506	14/15	0.74	0.27	43,52,61,70	0
2	NAG	B	503	14/15	0.78	0.19	57,60,70,75	0
2	NAG	D	503	14/15	0.82	0.20	56,62,71,83	0
2	NAG	D	501	14/15	0.85	0.15	39,47,55,57	0
2	NAG	D	504	14/15	0.86	0.20	47,53,62,65	0
2	NAG	B	501	14/15	0.87	0.16	48,56,63,64	0
2	NAG	C	506	14/15	0.87	0.20	52,64,72,84	0
2	NAG	A	501	14/15	0.89	0.13	44,55,58,62	0
2	NAG	C	501	14/15	0.89	0.13	34,42,48,55	0
2	NAG	B	504	14/15	0.89	0.15	43,48,53,57	0
2	NAG	C	508	14/15	0.89	0.16	46,51,55,56	0
2	NAG	D	505	14/15	0.90	0.16	48,61,65,66	0
2	NAG	A	503	14/15	0.91	0.15	41,45,50,53	0
2	NAG	B	502	14/15	0.92	0.13	27,40,45,46	0
2	NAG	A	508	14/15	0.92	0.14	45,50,54,59	0
2	NAG	C	505	14/15	0.92	0.15	26,33,41,42	0
2	NAG	A	504	14/15	0.92	0.17	39,45,50,51	0
2	NAG	B	505	14/15	0.92	0.14	46,50,57,61	0
3	Y2O	D	507	41/41	0.92	0.16	19,28,38,47	0
2	NAG	A	505	14/15	0.93	0.14	30,34,40,48	0
2	NAG	C	503	14/15	0.93	0.13	41,44,48,51	0
3	Y2O	A	507	41/41	0.93	0.16	20,27,41,50	0
3	Y2O	B	507	41/41	0.93	0.15	20,25,38,43	0
3	Y2O	C	507	41/41	0.93	0.16	14,20,32,46	0
2	NAG	C	504	14/15	0.93	0.12	27,33,37,37	0
2	NAG	C	502	14/15	0.94	0.15	24,27,31,34	0
2	NAG	D	502	14/15	0.94	0.18	29,35,39,49	0
2	NAG	A	502	14/15	0.96	0.15	25,31,36,42	0

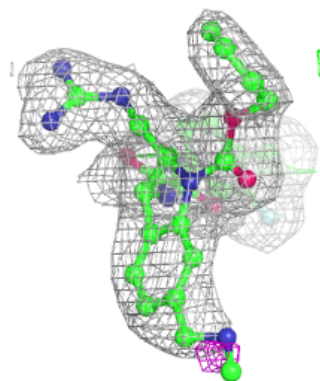
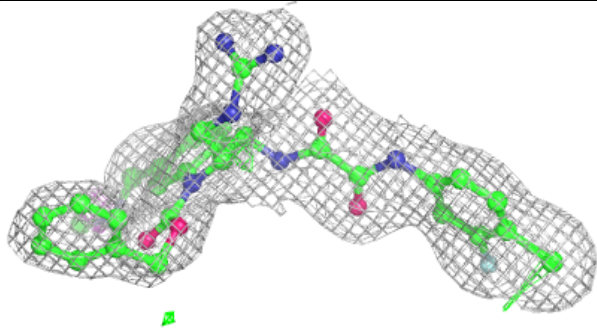
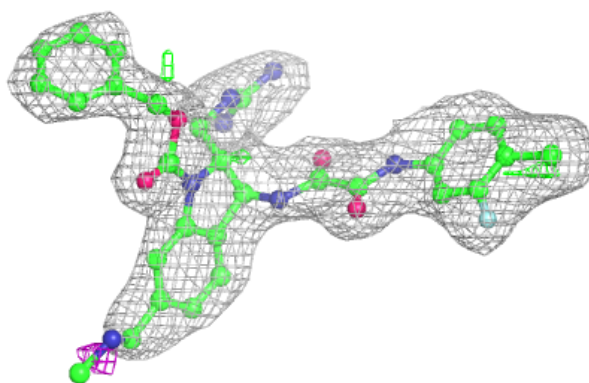
The following is a graphical depiction of the model fit to experimental electron density of all instances of the Ligand of Interest. In addition, ligands with molecular weight > 250 and outliers as shown on the geometry validation Tables will also be included. Each fit is shown from different orientation to approximate a three-dimensional view.

**Electron density around Y2O D 507:**

$2mF_o-DF_c$  (at 0.7 rmsd) in gray  
 $mF_o-DF_c$  (at 3 rmsd) in purple (negative)  
and green (positive)

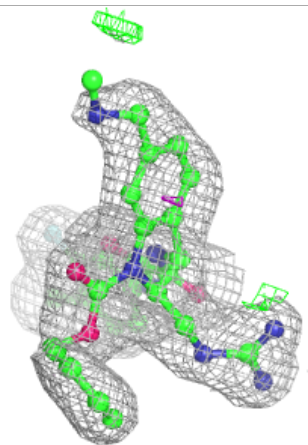
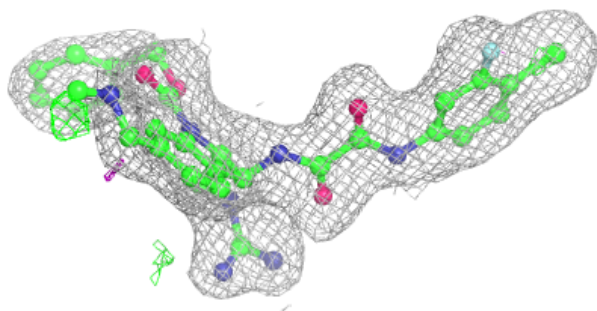
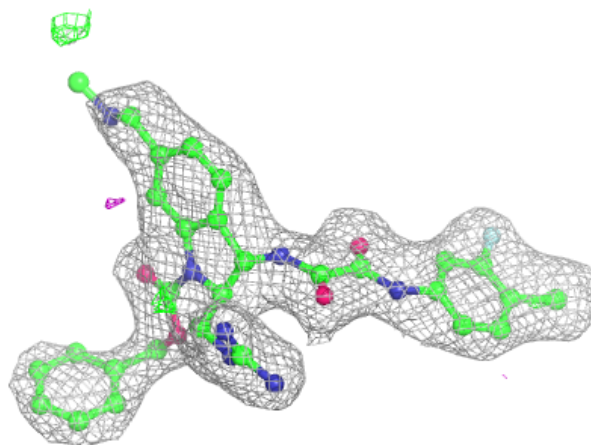
**Electron density around Y2O A 507:**

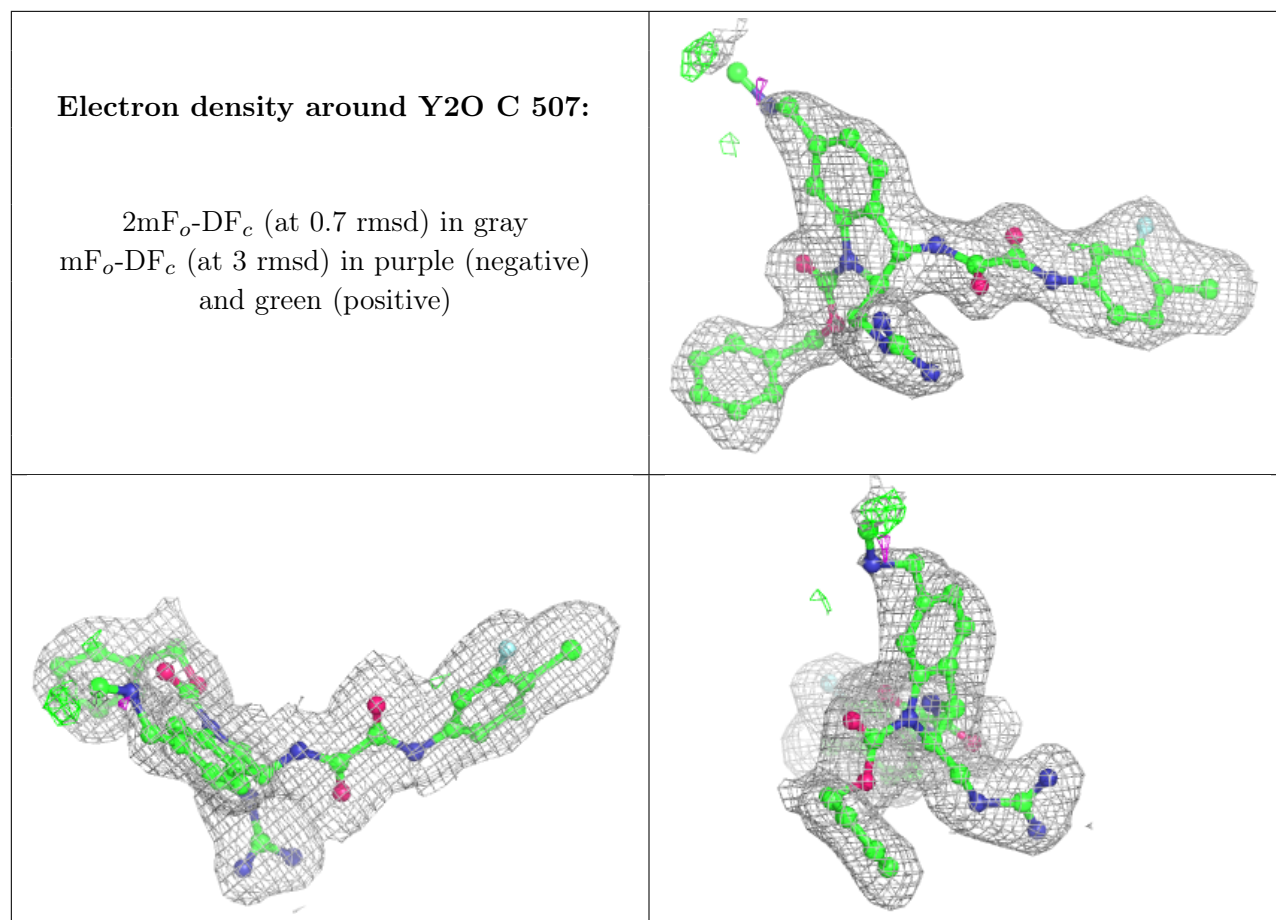
$2mF_o-DF_c$  (at 0.7 rmsd) in gray  
 $mF_o-DF_c$  (at 3 rmsd) in purple (negative)  
and green (positive)



**Electron density around Y2O B 507:**

$2mF_o-DF_c$  (at 0.7 rmsd) in gray  
 $mF_o-DF_c$  (at 3 rmsd) in purple (negative)  
and green (positive)





## 6.5 Other polymers [i](#)

There are no such residues in this entry.