



Full wwPDB X-ray Structure Validation Report ⓘ

Nov 24, 2021 – 09:14 pm GMT

PDB ID : 6FOM
Title : Copper transporter OprC
Authors : Bhamidimarri, S.P.; van den Berg, B.
Deposited on : 2018-02-07
Resolution : 2.90 Å(reported)

This is a Full wwPDB X-ray Structure Validation Report for a publicly released PDB entry.

We welcome your comments at validation@mail.wwpdb.org

A user guide is available at

<https://www.wwpdb.org/validation/2017/XrayValidationReportHelp>

with specific help available everywhere you see the ⓘ symbol.

The following versions of software and data (see [references ⓘ](#)) were used in the production of this report:

MolProbity : 4.02b-467
Mogul : 1.8.4 (270009), CSD as541be (2020)
Xtrriage (Phenix) : 1.13
EDS : 2.23.2
Percentile statistics : 20191225.v01 (using entries in the PDB archive December 25th 2019)
Refmac : 5.8.0267
CCP4 : 7.1.010 (Gargrove)
Ideal geometry (proteins) : Engh & Huber (2001)
Ideal geometry (DNA, RNA) : Parkinson et al. (1996)
Validation Pipeline (wwPDB-VP) : 2.23.2

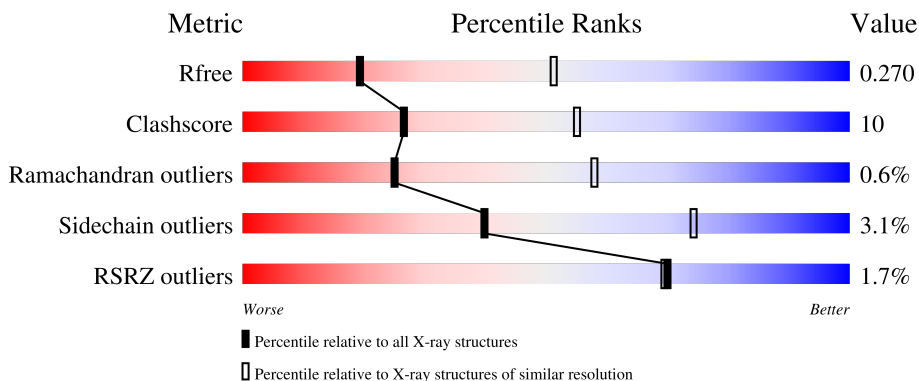
1 Overall quality at a glance

The following experimental techniques were used to determine the structure:

X-RAY DIFFRACTION

The reported resolution of this entry is 2.90 Å.

Percentile scores (ranging between 0-100) for global validation metrics of the entry are shown in the following graphic. The table shows the number of entries on which the scores are based.



Metric	Whole archive (#Entries)	Similar resolution (#Entries, resolution range(Å))
R_{free}	130704	1957 (2.90-2.90)
Clashscore	141614	2172 (2.90-2.90)
Ramachandran outliers	138981	2115 (2.90-2.90)
Sidechain outliers	138945	2117 (2.90-2.90)
RSRZ outliers	127900	1906 (2.90-2.90)

The table below summarises the geometric issues observed across the polymeric chains and their fit to the electron density. The red, orange, yellow and green segments of the lower bar indicate the fraction of residues that contain outliers for ≥ 3 , 2, 1 and 0 types of geometric quality criteria respectively. A grey segment represents the fraction of residues that are not modelled. The numeric value for each fraction is indicated below the corresponding segment, with a dot representing fractions $\leq 5\%$. The upper red bar (where present) indicates the fraction of residues that have poor fit to the electron density. The numeric value is given above the bar.

Mol	Chain	Length	Quality of chain
1	A	723	
1	B	723	

2 Entry composition i

There are 2 unique types of molecules in this entry. The entry contains 10133 atoms, of which 0 are hydrogens and 0 are deuteriums.

In the tables below, the ZeroOcc column contains the number of atoms modelled with zero occupancy, the AltConf column contains the number of residues with at least one atom in alternate conformation and the Trace column contains the number of residues modelled with at most 2 atoms.

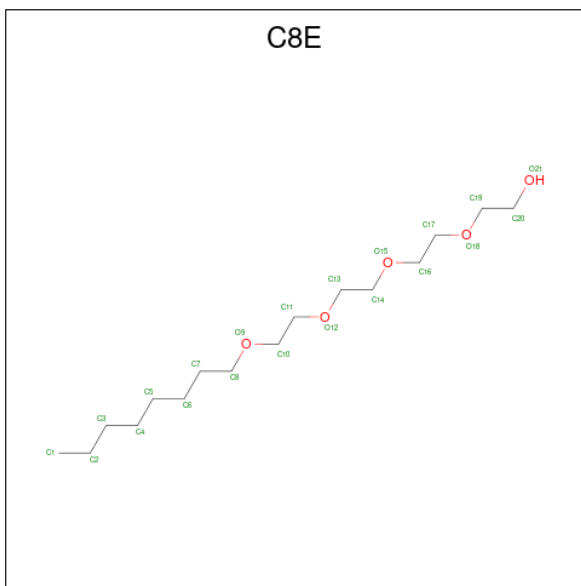
- Molecule 1 is a protein called Putative copper transport outer membrane porin OprC.

Mol	Chain	Residues	Atoms					ZeroOcc	AltConf	Trace
			Total	C	N	O	S			
1	A	651	Total 5055	C 3175	N 893	O 972	S 15	0	1	0
1	B	644	Total 5003	C 3144	N 884	O 961	S 14	0	0	0

There are 4 discrepancies between the modelled and reference sequences:

Chain	Residue	Modelled	Actual	Comment	Reference
A	91	ALA	CYS	engineered mutation	UNP G3XD89
A	95	ALA	MET	engineered mutation	UNP G3XD89
B	91	ALA	CYS	engineered mutation	UNP G3XD89
B	95	ALA	MET	engineered mutation	UNP G3XD89

- Molecule 2 is (HYDROXYETHYLOXY)TRI(ETHYLOXY)OCTANE (three-letter code: C8E) (formula: $C_{16}H_{34}O_5$).

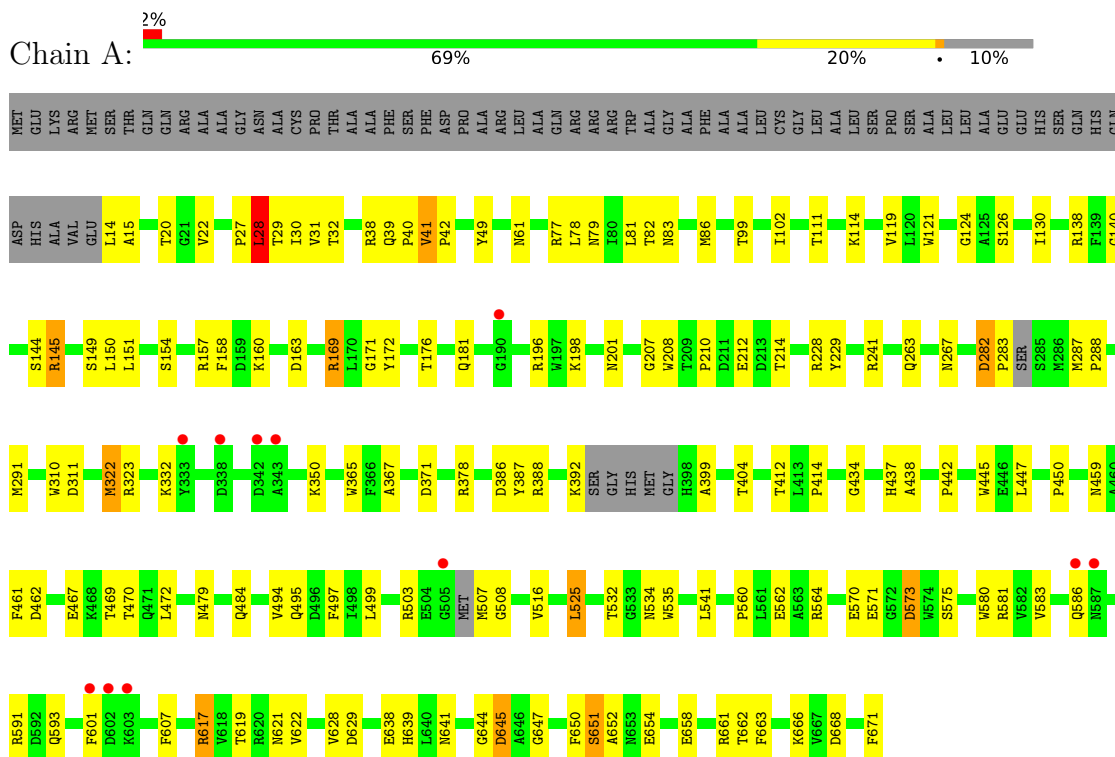


Mol	Chain	Residues	Atoms			ZeroOcc	AltConf
2	A	1	Total 15	C 10	O 5	0	0
2	A	1	Total 18	C 13	O 5	0	0
2	B	1	Total 21	C 16	O 5	0	0
2	B	1	Total 21	C 16	O 5	0	0

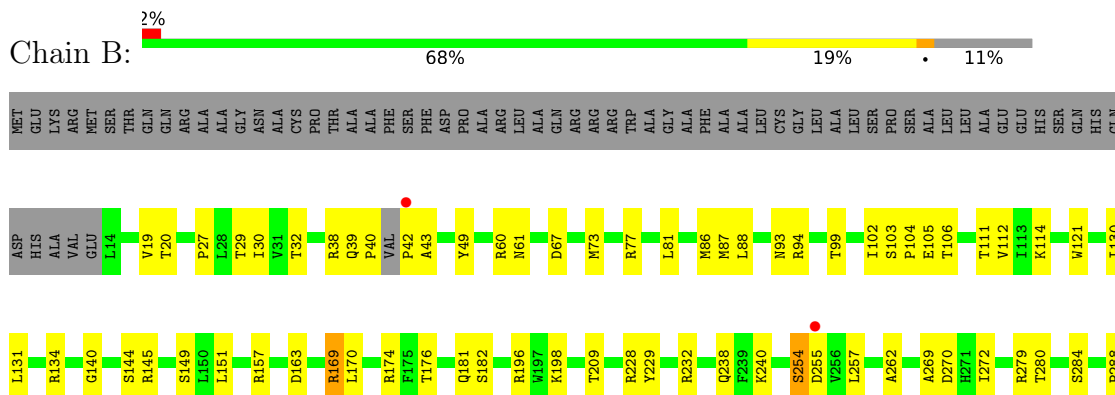
3 Residue-property plots [i](#)

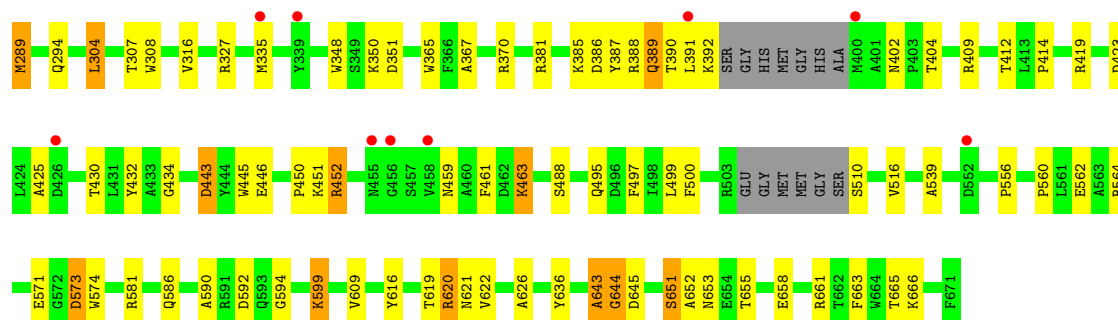
These plots are drawn for all protein, RNA, DNA and oligosaccharide chains in the entry. The first graphic for a chain summarises the proportions of the various outlier classes displayed in the second graphic. The second graphic shows the sequence view annotated by issues in geometry and electron density. Residues are color-coded according to the number of geometric quality criteria for which they contain at least one outlier: green = 0, yellow = 1, orange = 2 and red = 3 or more. A red dot above a residue indicates a poor fit to the electron density ($RSRZ > 2$). Stretches of 2 or more consecutive residues without any outlier are shown as a green connector. Residues present in the sample, but not in the model, are shown in grey.

- Molecule 1: Putative copper transport outer membrane porin OprC



- Molecule 1: Putative copper transport outer membrane porin OprC





4 Data and refinement statistics

Property	Value	Source
Space group	P 2 21 21	Depositor
Cell constants a, b, c, α , β , γ	62.13Å 170.56Å 197.37Å 90.00° 90.00° 90.00°	Depositor
Resolution (Å)	49.26 – 2.90 49.26 – 2.90	Depositor EDS
% Data completeness (in resolution range)	88.9 (49.26-2.90) 88.9 (49.26-2.90)	Depositor EDS
R_{merge}	(Not available)	Depositor
R_{sym}	(Not available)	Depositor
$\langle I/\sigma(I) \rangle$ ¹	1.82 (at 2.91Å)	Xtrriage
Refinement program	PHENIX (1.12_2829: ???)	Depositor
R, R_{free}	0.214 , 0.270 0.214 , 0.270	Depositor DCC
R_{free} test set	2024 reflections (4.79%)	wwPDB-VP
Wilson B-factor (Å ²)	49.2	Xtrriage
Anisotropy	0.366	Xtrriage
Bulk solvent k_{sol} (e/Å ³), B_{sol} (Å ²)	(Not available) , (Not available)	EDS
L-test for twinning ²	$\langle L \rangle = 0.50$, $\langle L^2 \rangle = 0.33$	Xtrriage
Estimated twinning fraction	No twinning to report.	Xtrriage
F_o, F_c correlation	0.90	EDS
Total number of atoms	10133	wwPDB-VP
Average B, all atoms (Å ²)	50.0	wwPDB-VP

Xtrriage's analysis on translational NCS is as follows: *The analyses of the Patterson function reveals a significant off-origin peak that is 26.68 % of the origin peak, indicating pseudo-translational symmetry. The chance of finding a peak of this or larger height randomly in a structure without pseudo-translational symmetry is equal to 2.5220e-03. The detected translational NCS is most likely also responsible for the elevated intensity ratio.*

¹Intensities estimated from amplitudes.

²Theoretical values of $\langle |L| \rangle$, $\langle L^2 \rangle$ for acentric reflections are 0.5, 0.333 respectively for untwinned datasets, and 0.375, 0.2 for perfectly twinned datasets.

5 Model quality [i](#)

5.1 Standard geometry [i](#)

Bond lengths and bond angles in the following residue types are not validated in this section: C8E

The Z score for a bond length (or angle) is the number of standard deviations the observed value is removed from the expected value. A bond length (or angle) with $|Z| > 5$ is considered an outlier worth inspection. RMSZ is the root-mean-square of all Z scores of the bond lengths (or angles).

Mol	Chain	Bond lengths		Bond angles	
		RMSZ	# Z >5	RMSZ	# Z >5
1	A	0.48	0/5182	0.73	1/7024 (0.0%)
1	B	0.49	0/5126	0.78	6/6949 (0.1%)
All	All	0.49	0/10308	0.75	7/13973 (0.1%)

There are no bond length outliers.

All (7) bond angle outliers are listed below:

Mol	Chain	Res	Type	Atoms	Z	Observed(°)	Ideal(°)
1	B	452	ARG	NE-CZ-NH1	-11.54	114.53	120.30
1	B	452	ARG	NE-CZ-NH2	8.73	124.67	120.30
1	B	452	ARG	CG-CD-NE	8.04	128.69	111.80
1	A	28	LEU	CA-CB-CG	6.32	129.84	115.30
1	B	452	ARG	CD-NE-CZ	-6.32	114.75	123.60
1	B	499	LEU	CA-CB-CG	6.26	129.70	115.30
1	B	452	ARG	CA-CB-CG	-5.64	100.99	113.40

There are no chirality outliers.

There are no planarity outliers.

5.2 Too-close contacts [i](#)

In the following table, the Non-H and H(model) columns list the number of non-hydrogen atoms and hydrogen atoms in the chain respectively. The H(added) column lists the number of hydrogen atoms added and optimized by MolProbity. The Clashes column lists the number of clashes within the asymmetric unit, whereas Symm-Clashes lists symmetry-related clashes.

Mol	Chain	Non-H	H(model)	H(added)	Clashes	Symm-Clashes
1	A	5055	0	4833	108	0
1	B	5003	0	4786	102	0

Continued on next page...

Continued from previous page...

Mol	Chain	Non-H	H(model)	H(added)	Clashes	Symm-Clashes
2	A	33	0	43	5	0
2	B	42	0	66	4	0
All	All	10133	0	9728	205	0

The all-atom clashscore is defined as the number of clashes found per 1000 atoms (including hydrogen atoms). The all-atom clashscore for this structure is 10.

All (205) close contacts within the same asymmetric unit are listed below, sorted by their clash magnitude.

Atom-1	Atom-2	Interatomic distance (Å)	Clash overlap (Å)
1:A:495:GLN:OE1	1:B:381:ARG:NH1	1.82	1.12
1:A:201:ASN:HD22	1:A:241:ARG:HH21	1.14	0.90
1:A:151:LEU:HB2	1:A:666:LYS:HE3	1.53	0.89
1:A:126:SER:HB2	1:A:469:THR:HG21	1.56	0.87
1:A:412:THR:HG23	1:B:495:GLN:HE21	1.40	0.85
1:A:150:LEU:HD23	2:A:702:C8E:H132	1.62	0.81
1:B:619:THR:HG23	1:B:621:ASN:H	1.43	0.81
1:A:160:LYS:HD3	2:A:702:C8E:H141	1.61	0.81
1:B:663:PHE:HB3	2:B:702:C8E:H112	1.63	0.79
1:B:106:THR:HG22	1:B:134:ARG:HH12	1.46	0.79
1:B:40:PRO:HG2	1:B:42:PRO:N	1.98	0.78
1:B:619:THR:HG22	1:B:622:VAL:HG12	1.65	0.77
1:A:495:GLN:NE2	1:B:412:THR:OG1	2.18	0.77
1:A:619:THR:HG23	1:A:621:ASN:H	1.47	0.77
1:B:432:TYR:OH	1:B:488:SER:OG	2.02	0.77
1:A:20:THR:HG22	1:A:39:GLN:HB2	1.67	0.76
1:A:414:PRO:HG2	1:B:414:PRO:HG2	1.68	0.76
1:A:99:THR:HA	1:A:102:ILE:HD12	1.66	0.76
1:A:412:THR:HG23	1:B:495:GLN:NE2	2.00	0.75
1:A:30:ILE:HD11	1:A:114:LYS:HE2	1.69	0.75
1:A:619:THR:HG22	1:A:622:VAL:HG12	1.70	0.74
1:B:289:MET:HE2	1:B:289:MET:H	1.54	0.72
1:B:30:ILE:HD11	1:B:114:LYS:HE2	1.73	0.69
1:B:592:ASP:HA	1:B:599:LYS:HD2	1.73	0.69
1:B:43:ALA:H	1:B:157:ARG:HH12	1.38	0.69
1:B:151:LEU:HD12	1:B:666:LYS:HB2	1.75	0.69
1:A:479:ASN:HB2	1:A:484:GLN:NE2	2.09	0.67
1:B:19:VAL:HG22	1:B:38:ARG:HG2	1.73	0.67
1:A:39:GLN:HB3	1:A:40:PRO:HD3	1.77	0.66
1:B:240:LYS:HB3	1:B:270:ASP:HB3	1.78	0.66
1:A:140:GLY:O	1:A:169:ARG:NH1	2.29	0.65

Continued on next page...

Continued from previous page...

Atom-1	Atom-2	Interatomic distance (Å)	Clash overlap (Å)
1:B:111:THR:HG23	1:B:131:LEU:HB2	1.77	0.65
1:A:459:ASN:ND2	1:A:461:PHE:HB3	2.11	0.65
1:B:451:LYS:O	1:B:452:ARG:HG3	1.95	0.65
1:A:532:THR:OG1	1:A:535:TRP:N	2.26	0.64
1:A:14:LEU:O	1:A:617:ARG:NH2	2.31	0.64
1:A:196:ARG:HD3	1:A:228:ARG:NH2	2.13	0.64
1:B:20:THR:HG22	1:B:39:GLN:HB3	1.79	0.63
1:A:404:THR:HG21	1:A:459:ASN:ND2	2.13	0.63
1:B:140:GLY:O	1:B:169:ARG:NH1	2.32	0.63
1:B:620:ARG:HG2	1:B:620:ARG:HH11	1.64	0.63
1:A:282:ASP:HB2	1:A:283:PRO:HD3	1.81	0.63
1:B:386:ASP:OD1	1:B:388:ARG:HG3	1.99	0.63
1:B:560:PRO:HB3	1:B:586:GLN:HB2	1.81	0.62
1:A:20:THR:HG22	1:A:39:GLN:CB	2.29	0.62
1:B:307:THR:HG23	1:B:316:VAL:HG22	1.82	0.61
1:A:560:PRO:HB3	1:A:586:GLN:HB2	1.81	0.61
1:A:208:TRP:CE2	1:A:210:PRO:HG3	2.36	0.61
1:A:645:ASP:O	1:A:647:GLY:N	2.31	0.61
1:A:31:VAL:HG22	1:A:111:THR:HG23	1.82	0.60
1:A:469:THR:HB	1:A:494:VAL:HG22	1.84	0.60
1:A:651:SER:OG	1:A:652:ALA:N	2.35	0.59
1:B:385:LYS:HD3	1:B:387:TYR:CZ	2.38	0.59
1:B:651:SER:O	1:B:653:ASN:N	2.35	0.59
1:A:83:ASN:O	1:A:263:GLN:NE2	2.34	0.58
1:A:310:TRP:HD1	1:A:311:ASP:OD1	1.86	0.58
1:B:327:ARG:HG2	1:B:350:LYS:HA	1.84	0.58
1:A:77:ARG:NH1	1:A:467:GLU:OE1	2.36	0.58
1:A:149:SER:OG	1:A:668:ASP:OD2	2.22	0.58
1:B:38:ARG:O	1:B:40:PRO:HD3	2.03	0.58
1:B:144:SER:C	1:B:145:ARG:HD3	2.24	0.58
1:A:181:GLN:OE1	1:A:198:LYS:NZ	2.37	0.57
1:B:106:THR:HG22	1:B:134:ARG:NH1	2.18	0.57
1:A:365:TRP:CE2	1:A:367:ALA:HB2	2.40	0.57
1:B:262:ALA:HB2	1:B:304:LEU:HD12	1.87	0.56
1:B:392:LYS:HB2	1:B:451:LYS:HZ2	1.70	0.56
1:B:49:TYR:OH	1:B:105:GLU:HG2	2.06	0.56
1:B:571:GLU:O	1:B:573:ASP:N	2.39	0.56
1:A:525:LEU:HD21	1:A:541:LEU:HD23	1.88	0.56
1:A:445:TRP:O	1:A:450:PRO:HD3	2.05	0.55
1:B:661:ARG:HD2	2:B:701:C8E:H162	1.89	0.55
1:B:42:PRO:HB2	1:B:157:ARG:HH12	1.72	0.55

Continued on next page...

Continued from previous page...

Atom-1	Atom-2	Interatomic distance (Å)	Clash overlap (Å)
1:A:438:ALA:HB3	1:A:469:THR:HG23	1.88	0.54
1:B:163:ASP:OD1	1:B:176:THR:HG22	2.08	0.54
1:B:144:SER:O	1:B:145:ARG:HD3	2.07	0.54
1:B:365:TRP:CE2	1:B:367:ALA:HB2	2.43	0.54
1:B:19:VAL:CG2	1:B:38:ARG:HG2	2.37	0.54
1:B:254:SER:OG	1:B:255:ASP:N	2.40	0.54
1:B:106:THR:O	1:B:134:ARG:NH1	2.42	0.53
1:A:621:ASN:HB3	1:A:671:PHE:CE1	2.44	0.53
1:B:93:ASN:HB2	1:B:232:ARG:NH1	2.24	0.53
1:B:463:LYS:O	1:B:463:LYS:HG3	2.08	0.52
1:A:154:SER:O	1:A:157:ARG:HG3	2.09	0.52
1:B:390:THR:O	1:B:391:LEU:HB2	2.09	0.52
1:B:445:TRP:O	1:B:450:PRO:HD3	2.10	0.51
1:A:447:LEU:HD22	1:A:461:PHE:HA	1.92	0.51
1:A:641:ASN:ND2	1:A:658:GLU:OE1	2.42	0.51
1:B:500:PHE:HB2	1:B:594:GLY:O	2.11	0.50
1:A:160:LYS:HD2	2:A:702:C8E:H192	1.93	0.50
1:B:365:TRP:CZ2	1:B:367:ALA:HB2	2.47	0.50
1:A:126:SER:HB2	1:A:469:THR:CG2	2.33	0.50
1:A:32:THR:OG1	1:A:38:ARG:NH1	2.45	0.49
1:A:27:PRO:O	1:A:29:THR:HG23	2.12	0.49
1:A:442:PRO:HB2	1:A:447:LEU:HG	1.95	0.49
1:B:181:GLN:HB3	1:B:198:LYS:HG3	1.94	0.49
1:B:643:ALA:HA	1:B:655:THR:HA	1.94	0.49
1:A:287:MET:HE3	1:A:291:MET:SD	2.53	0.49
1:B:93:ASN:HB2	1:B:232:ARG:HH12	1.77	0.49
1:A:138:ARG:HH22	1:A:212:GLU:HA	1.78	0.49
1:B:111:THR:CG2	1:B:131:LEU:HB2	2.42	0.49
1:B:103:SER:O	1:B:106:THR:HB	2.13	0.49
1:A:459:ASN:OD1	1:A:462:ASP:N	2.32	0.49
1:A:41:VAL:HG12	1:A:629:ASP:OD2	2.13	0.48
1:B:564:ARG:HE	1:B:581:ARG:HD2	1.77	0.48
1:A:571:GLU:O	1:A:573:ASP:N	2.40	0.48
1:B:279:ARG:HG2	1:B:280:THR:N	2.27	0.48
1:B:388:ARG:O	1:B:389:GLN:HB2	2.13	0.48
1:B:86:MET:HG2	1:B:88:LEU:HD11	1.96	0.48
1:B:644:GLY:O	1:B:645:ASP:HB3	2.13	0.48
1:A:157:ARG:NH2	1:A:662:THR:HG21	2.29	0.48
1:A:201:ASN:ND2	1:A:241:ARG:HH21	1.96	0.48
1:B:423:ASP:HA	1:B:430:THR:HA	1.95	0.48
1:A:144:SER:C	1:A:145:ARG:HD3	2.34	0.48

Continued on next page...

Continued from previous page...

Atom-1	Atom-2	Interatomic distance (Å)	Clash overlap (Å)
1:B:60:ARG:NH1	1:B:658:GLU:OE2	2.47	0.48
1:B:196:ARG:HD3	1:B:228:ARG:NH1	2.29	0.48
1:A:15:ALA:HB3	1:A:570:GLU:OE1	2.13	0.47
1:A:367:ALA:O	1:A:371:ASP:HB2	2.14	0.47
1:B:27:PRO:O	1:B:29:THR:HG23	2.14	0.47
1:B:40:PRO:HD2	1:B:42:PRO:HD3	1.95	0.47
1:A:22:VAL:HG11	1:A:32:THR:HB	1.96	0.47
1:A:651:SER:HB3	1:A:654:GLU:OE1	2.14	0.47
1:A:586:GLN:HG2	1:A:639:HIS:CD2	2.50	0.47
1:B:240:LYS:CB	1:B:270:ASP:HB3	2.44	0.46
1:A:282:ASP:HB2	1:A:283:PRO:CD	2.44	0.46
1:B:87:MET:CE	1:B:269:ALA:HB2	2.46	0.46
1:A:124:GLY:O	1:A:126:SER:N	2.48	0.46
1:B:73:MET:HB3	1:B:77:ARG:HD2	1.96	0.46
1:B:497:PHE:N	1:B:516:VAL:O	2.49	0.46
1:A:39:GLN:O	1:A:39:GLN:NE2	2.46	0.46
1:B:174:ARG:HE	1:B:176:THR:CG2	2.29	0.46
1:B:81:LEU:HD11	1:B:121:TRP:HB3	1.97	0.46
1:A:644:GLY:HA3	1:A:650:PHE:HB3	1.98	0.46
1:A:78:LEU:HD22	1:A:130:ILE:HD11	1.97	0.45
1:A:414:PRO:CG	1:B:414:PRO:HG2	2.43	0.45
1:A:564:ARG:HE	1:A:581:ARG:HD2	1.81	0.45
1:B:170:LEU:HA	1:B:209:THR:O	2.17	0.45
1:A:172:TYR:CE1	1:A:207:GLY:HA3	2.51	0.45
1:A:412:THR:H	1:B:495:GLN:HE22	1.63	0.45
1:A:497:PHE:N	1:A:516:VAL:O	2.50	0.45
1:A:81:LEU:HD11	1:A:121:TRP:HB3	1.99	0.45
1:B:419:ARG:HA	1:B:434:GLY:HA2	1.99	0.45
1:B:351:ASP:HB2	1:B:388:ARG:HG2	1.98	0.45
1:B:99:THR:HA	1:B:102:ILE:HD12	1.98	0.45
1:B:452:ARG:HH11	1:B:452:ARG:HD3	1.36	0.45
1:A:392:LYS:NZ	1:A:399:ALA:HB2	2.32	0.45
1:B:61:ASN:HB3	1:B:229:TYR:CD1	2.52	0.45
1:B:294:GLN:HG2	1:B:348:TRP:CH2	2.52	0.45
1:A:163:ASP:OD1	1:A:176:THR:HG22	2.17	0.44
1:A:144:SER:H	1:A:145:ARG:NH1	2.16	0.44
1:B:562:GLU:OE1	1:B:581:ARG:NE	2.44	0.44
1:A:151:LEU:O	1:A:158:PHE:HA	2.16	0.44
1:A:282:ASP:OD1	1:A:282:ASP:N	2.39	0.44
1:B:257:LEU:HD13	1:B:308:TRP:CZ3	2.52	0.44
1:A:350:LYS:HE3	1:A:387:TYR:CD1	2.53	0.44

Continued on next page...

Continued from previous page...

Atom-1	Atom-2	Interatomic distance (Å)	Clash overlap (Å)
2:B:701:C8E:H102	2:B:701:C8E:H71	1.58	0.44
1:A:119:VAL:HB	1:A:378:ARG:HD2	1.99	0.44
1:A:386:ASP:OD2	1:A:388:ARG:HG3	2.17	0.44
1:A:149:SER:HB3	1:A:666:LYS:HE2	2.00	0.43
1:B:279:ARG:HG2	1:B:280:THR:H	1.82	0.43
1:B:574:TRP:HB3	1:B:616:TYR:HD1	1.83	0.43
1:A:171:GLY:HA2	1:A:207:GLY:O	2.18	0.43
1:A:86:MET:O	1:A:267:ASN:ND2	2.39	0.43
1:A:562:GLU:HG3	1:A:583:VAL:HG12	2.01	0.43
1:B:386:ASP:HB2	1:B:461:PHE:CE1	2.53	0.43
1:B:238:GLN:HB3	1:B:272:ILE:HG13	2.00	0.43
1:A:42:PRO:HG2	1:A:49:TYR:CE1	2.54	0.43
1:B:626:ALA:HB2	1:B:665:THR:HG23	2.01	0.43
1:B:112:VAL:HG22	1:B:130:ILE:HG12	2.01	0.42
1:B:157:ARG:HD2	1:B:182:SER:HB2	2.01	0.42
1:A:392:LYS:HZ1	1:A:399:ALA:HB2	1.84	0.42
1:B:402:ASN:OD1	1:B:404:THR:HG22	2.19	0.42
1:B:102:ILE:O	1:B:104:PRO:HD3	2.19	0.42
1:B:209:THR:O	1:B:209:THR:OG1	2.37	0.42
2:A:701:C8E:H191	2:A:701:C8E:H161	1.62	0.42
1:B:609:VAL:HG11	1:B:636:TYR:CZ	2.55	0.42
1:A:644:GLY:O	1:A:645:ASP:HB2	2.20	0.42
1:B:370:ARG:CZ	1:B:425:ALA:HB2	2.49	0.42
1:B:443:ASP:HB2	1:B:446:GLU:CG	2.50	0.42
1:A:591:ARG:NH2	1:A:601:PHE:O	2.53	0.42
1:B:539:ALA:HA	1:B:564:ARG:O	2.20	0.42
1:A:210:PRO:HD2	1:A:214:THR:HB	2.01	0.42
1:A:350:LYS:HE3	1:A:387:TYR:CE1	2.55	0.42
1:A:78:LEU:HD22	1:A:130:ILE:CD1	2.50	0.41
1:A:434:GLY:O	1:A:472:LEU:HD12	2.20	0.41
1:A:41:VAL:O	1:A:41:VAL:HG13	2.19	0.41
1:B:556:PRO:HB3	1:B:590:ALA:HB3	2.02	0.41
1:A:28:LEU:HG	1:A:114:LYS:O	2.20	0.41
1:A:628:VAL:HG22	1:A:663:PHE:CE2	2.55	0.41
1:A:437:HIS:ND1	1:A:470:THR:OG1	2.52	0.41
1:A:621:ASN:HB3	1:A:671:PHE:CD1	2.55	0.41
1:B:32:THR:OG1	1:B:38:ARG:NH1	2.52	0.41
1:A:638:GLU:HB2	1:A:641:ASN:OD1	2.20	0.41
1:B:288:PRO:HD2	1:B:289:MET:HE2	2.01	0.41
1:B:388:ARG:O	1:B:389:GLN:CB	2.68	0.41
1:A:507:MET:HB3	1:A:508:GLY:H	1.59	0.41

Continued on next page...

Continued from previous page...

Atom-1	Atom-2	Interatomic distance (Å)	Clash overlap (Å)
1:B:196:ARG:HD3	1:B:228:ARG:CZ	2.50	0.41
1:A:283:PRO:C	1:A:288:PRO:HB3	2.41	0.41
1:A:499:LEU:HD11	1:A:593:GLN:HB3	2.02	0.41
1:A:583:VAL:HG21	1:A:607:PHE:CZ	2.55	0.41
1:A:661:ARG:HD2	2:A:701:C8E:H172	2.03	0.41
1:B:661:ARG:NH1	2:B:701:C8E:H162	2.36	0.41
1:A:82:THR:CG2	1:A:102:ILE:HG12	2.51	0.40
1:A:61:ASN:HB3	1:A:229:TYR:CD2	2.56	0.40
1:A:581:ARG:NH1	1:A:638:GLU:OE1	2.51	0.40
1:A:86:MET:HE3	1:A:322:MET:HG3	2.02	0.40

There are no symmetry-related clashes.

5.3 Torsion angles [i](#)

5.3.1 Protein backbone [i](#)

In the following table, the Percentiles column shows the percent Ramachandran outliers of the chain as a percentile score with respect to all X-ray entries followed by that with respect to entries of similar resolution.

The Analysed column shows the number of residues for which the backbone conformation was analysed, and the total number of residues.

Mol	Chain	Analysed	Favoured	Allowed	Outliers	Percentiles
1	A	644/723 (89%)	605 (94%)	36 (6%)	3 (0%)	29 61
1	B	636/723 (88%)	592 (93%)	39 (6%)	5 (1%)	19 51
All	All	1280/1446 (88%)	1197 (94%)	75 (6%)	8 (1%)	25 58

All (8) Ramachandran outliers are listed below:

Mol	Chain	Res	Type
1	A	41	VAL
1	A	282	ASP
1	A	645	ASP
1	B	652	ALA
1	B	389	GLN
1	B	443	ASP
1	B	643	ALA
1	B	644	GLY

5.3.2 Protein sidechains [i](#)

In the following table, the Percentiles column shows the percent sidechain outliers of the chain as a percentile score with respect to all X-ray entries followed by that with respect to entries of similar resolution.

The Analysed column shows the number of residues for which the sidechain conformation was analysed, and the total number of residues.

Mol	Chain	Analysed	Rotameric	Outliers	Percentiles
1	A	520/571 (91%)	505 (97%)	15 (3%)	42 76
1	B	515/571 (90%)	498 (97%)	17 (3%)	38 72
All	All	1035/1142 (91%)	1003 (97%)	32 (3%)	40 74

All (32) residues with a non-rotameric sidechain are listed below:

Mol	Chain	Res	Type
1	A	28	LEU
1	A	79	ASN
1	A	145	ARG
1	A	169	ARG
1	A	322	MET
1	A	323	ARG
1	A	332	LYS
1	A	503	ARG
1	A	525	LEU
1	A	534	ASN
1	A	573	ASP
1	A	575	SER
1	A	580	TRP
1	A	617	ARG
1	A	651	SER
1	B	67	ASP
1	B	94	ARG
1	B	149	SER
1	B	169	ARG
1	B	254	SER
1	B	284	SER
1	B	289	MET
1	B	304	LEU
1	B	335	MET
1	B	409	ARG
1	B	459	ASN
1	B	463	LYS

Continued on next page...

Continued from previous page...

Mol	Chain	Res	Type
1	B	510	SER
1	B	573	ASP
1	B	599	LYS
1	B	620	ARG
1	B	651	SER

Sometimes sidechains can be flipped to improve hydrogen bonding and reduce clashes. All (3) such sidechains are listed below:

Mol	Chain	Res	Type
1	A	201	ASN
1	A	495	GLN
1	B	495	GLN

5.3.3 RNA [i](#)

There are no RNA molecules in this entry.

5.4 Non-standard residues in protein, DNA, RNA chains [i](#)

There are no non-standard protein/DNA/RNA residues in this entry.

5.5 Carbohydrates [i](#)

There are no monosaccharides in this entry.

5.6 Ligand geometry [i](#)

4 ligands are modelled in this entry.

There are no bond length outliers.

There are no bond angle outliers.

There are no chirality outliers.

There are no torsion outliers.

There are no ring outliers.

No monomer is involved in short contacts.

5.7 Other polymers [i](#)

There are no such residues in this entry.

5.8 Polymer linkage issues [i](#)

There are no chain breaks in this entry.

6 Fit of model and data

6.1 Protein, DNA and RNA chains

In the following table, the column labelled ‘#RSRZ > 2’ contains the number (and percentage) of RSRZ outliers, followed by percent RSRZ outliers for the chain as percentile scores relative to all X-ray entries and entries of similar resolution. The OWAB column contains the minimum, median, 95th percentile and maximum values of the occupancy-weighted average B-factor per residue. The column labelled ‘Q < 0.9’ lists the number of (and percentage) of residues with an average occupancy less than 0.9.

Mol	Chain	Analysed	<RSRZ>	#RSRZ>2	OWAB(Å ²)	Q<0.9
1	A	651/723 (90%)	-0.11	11 (1%) 70 69	36, 48, 70, 100	0
1	B	644/723 (89%)	-0.17	11 (1%) 70 69	34, 47, 68, 89	0
All	All	1295/1446 (89%)	-0.14	22 (1%) 70 69	34, 47, 70, 100	0

All (22) RSRZ outliers are listed below:

Mol	Chain	Res	Type	RSRZ
1	B	456	GLY	3.1
1	B	426	ASP	2.8
1	A	601	PHE	2.8
1	B	552	ASP	2.7
1	B	339	TYR	2.6
1	B	400	MET	2.6
1	A	587	ASN	2.6
1	A	505	GLY	2.5
1	A	602	ASP	2.5
1	B	335	MET	2.4
1	A	342	ASP	2.4
1	A	603	LYS	2.4
1	A	586	GLN	2.3
1	A	190	GLY	2.3
1	B	455	ASN	2.2
1	B	458	VAL	2.2
1	B	255	ASP	2.2
1	A	343	ALA	2.2
1	A	333	TYR	2.1
1	B	42	PRO	2.0
1	A	338	ASP	2.0
1	B	391	LEU	2.0

6.2 Non-standard residues in protein, DNA, RNA chains [i](#)

There are no non-standard protein/DNA/RNA residues in this entry.

6.3 Carbohydrates [i](#)

There are no monosaccharides in this entry.

6.4 Ligands [i](#)

In the following table, the Atoms column lists the number of modelled atoms in the group and the number defined in the chemical component dictionary. The B-factors column lists the minimum, median, 95th percentile and maximum values of B factors of atoms in the group. The column labelled 'Q< 0.9' lists the number of atoms with occupancy less than 0.9.

Mol	Type	Chain	Res	Atoms	RSCC	RSR	B-factors(Å ²)	Q<0.9
2	C8E	B	702	21/21	0.91	0.27	46,55,62,67	0
2	C8E	A	702	18/21	0.95	0.19	39,50,59,60	0
2	C8E	A	701	15/21	0.95	0.24	37,46,49,57	0
2	C8E	B	701	21/21	0.96	0.23	44,47,53,62	0

6.5 Other polymers [i](#)

There are no such residues in this entry.